



**BOREHOLE COMPENSATED  
SONIC LOG**

Company MURFIN DRILLING COMPANY, INC.  
Well SHARP 'C' #1-6  
Field UNNAMED  
County CHEYENNE  
State KANSAS

Company MURFIN DRILLING COMPANY, INC.  
Well SHARP 'C' #1-6  
Field UNNAMED  
County CHEYENNE State KANSAS

Location: API #: 15-023-21539-00-00  
2230' FSL & 2310' FWL  
SEC 6 TWP 3S RGE 40W  
Permanent Datum GROUND LEVEL Elevation 3449'  
Log Measured From KELLY BUSHING  
Drilling Measured From KELLY BUSHING  
Other Services  
DIL/MEL  
CNL/CDL  
Elevation  
K.B. 3454'  
D.F. N/A  
G.L. 3449'

Date	3/8/2020						
Run Number	TWO						
Type Log	BHCS						
Depth Driller	5193'						
Depth Logger	5194'						
Bottom Logged Interval	5183'						
Top Logged Interval	300'						
Type Fluid In Hole	CHEMICAL						
Salinity, PPM CL	800						
Density	9.2						
Level	FULL						
Max. Rec. Temp. F	128 DEG/F						
Operating Rig Time	4 HOURS						
Equipment -- Location	P-108 HAYS						
Recorded By	J. HENRICKSON						
Witnessed By	ROBERT HENDRIX						
Borehole Record							
Run No.	Bit	From	To	Size	Wgt.	From	To
ONE	12.25"	0	345'	8.625"	24#	0	345'
TWO	7.875"	345'		TD			
Casing Record							

<<< Fold Here >>>

All interpretations are opinions based on inferences from electrical or other measurements and Pioneer Wireline Services, LLC cannot and does not guarantee the accuracy or correctness of any interpretation, and Pioneer Wireline Services, LLC will not be liable or responsible for any loss, costs, damages, or expenses incurred or sustained by anyone resulting from any interpretation made by any of our officers, agents or employees.

Comments

N/A DENOTES NOT AVAILABLE OR NON-APPLICABLE.  
  
ST. FRANCIS KANSAS  
WEST TO HWY 27, 4 NORTH TO S ROAD, 1/2 WEST  
SOUTH INTO

Log Measured From: KELLY BUSHING      5    Ft. Above Permanent Datum

THANK YOU FOR USING PIONEER ENERGY SERVICES  
www.pioneerenergy.com      785-625-3858

Your Pioneer Energy Services Crew	This Log Record Was Witnessed By
Engineer: J. HENRICKSON	Primary Witness: ROBERT HENDRIX
Operator:	Secondary Witness:
Operator:	Secondary Witness:
Operator:	Secondary Witness:

# Log Variables

DatabaseC:\ProgramData\Warrior\Data\murfin\_sharp\_c\_1\_6.db  
Dataset field/well/stackml/pass3.1/\_vars\_

## Top - Bottom

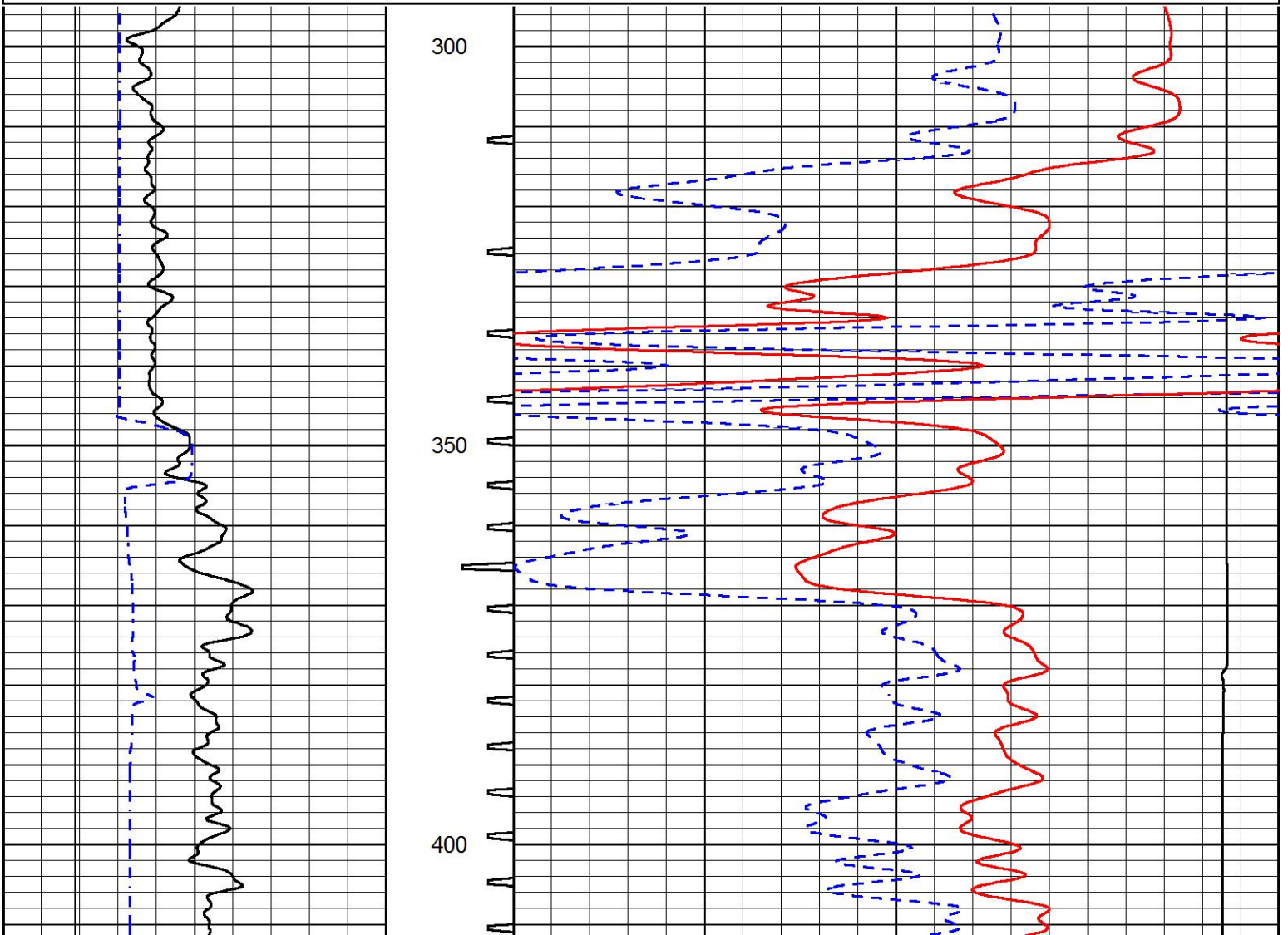
A	BOREID in	BOTTEMP degF	CASEOD in	CASETHCK in	FLUIDDEN g/cc	M	MATRXDEN g/cc
1	7.875	100	5.5	0	1	2	2.71
NPORSEL	PERFS	SNDERR mmho/m	SNDERRM mmho/m	SPSHIFT mV	SRFTEMP degF	SZCOR	TDEPTH ft
Limestone	0	0	0	290	50	Off	5194

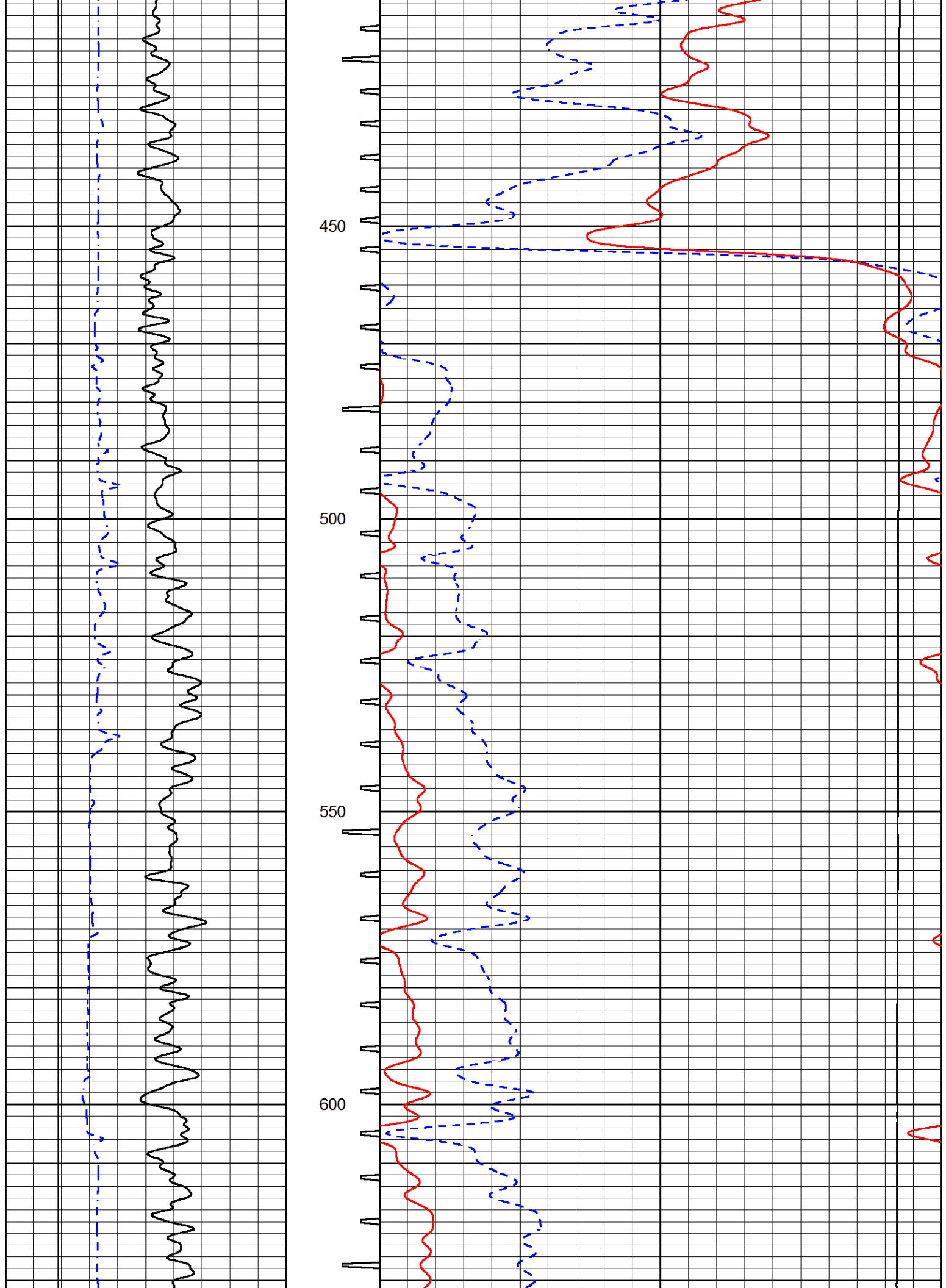


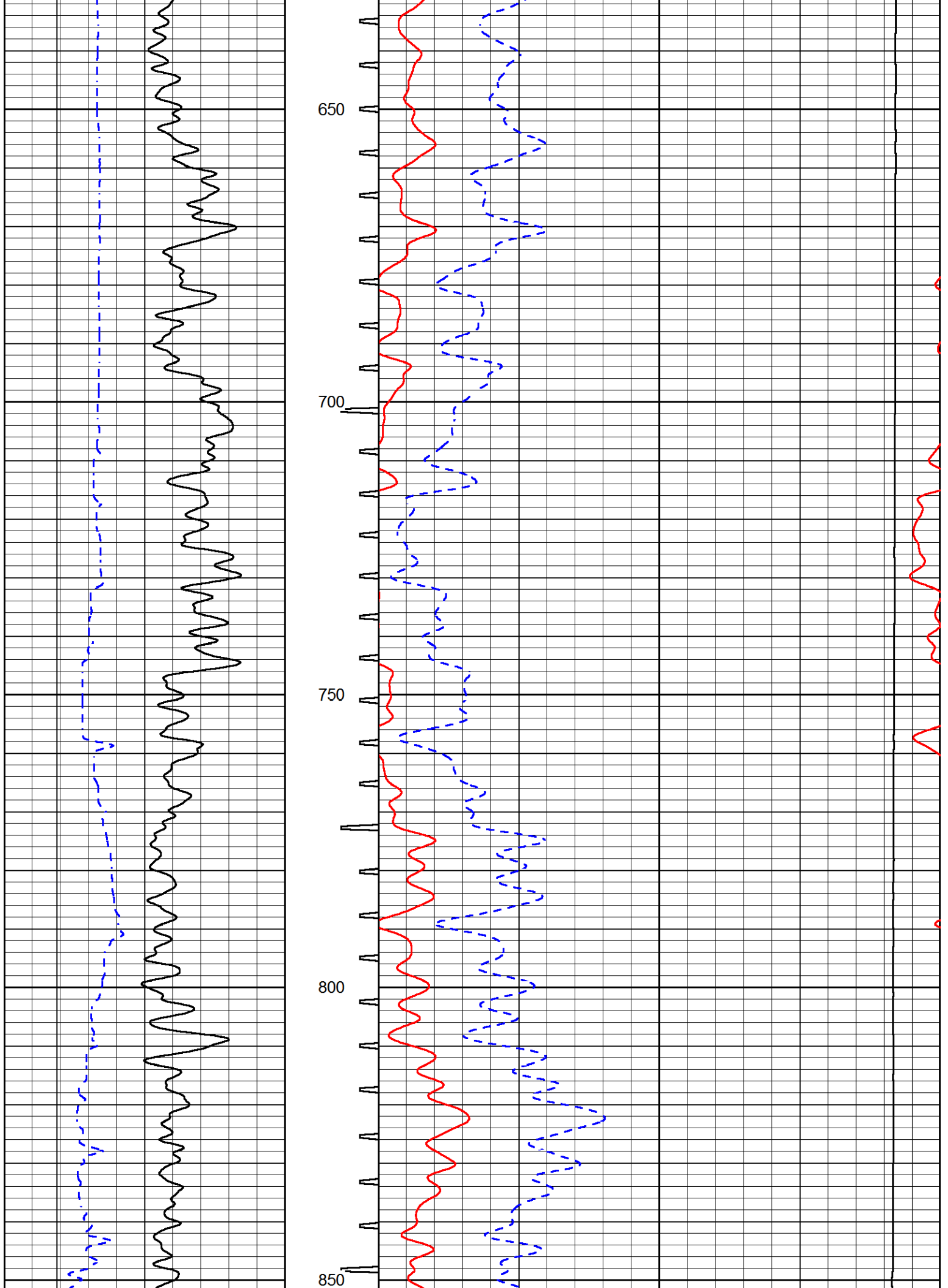
# MAIN PASS

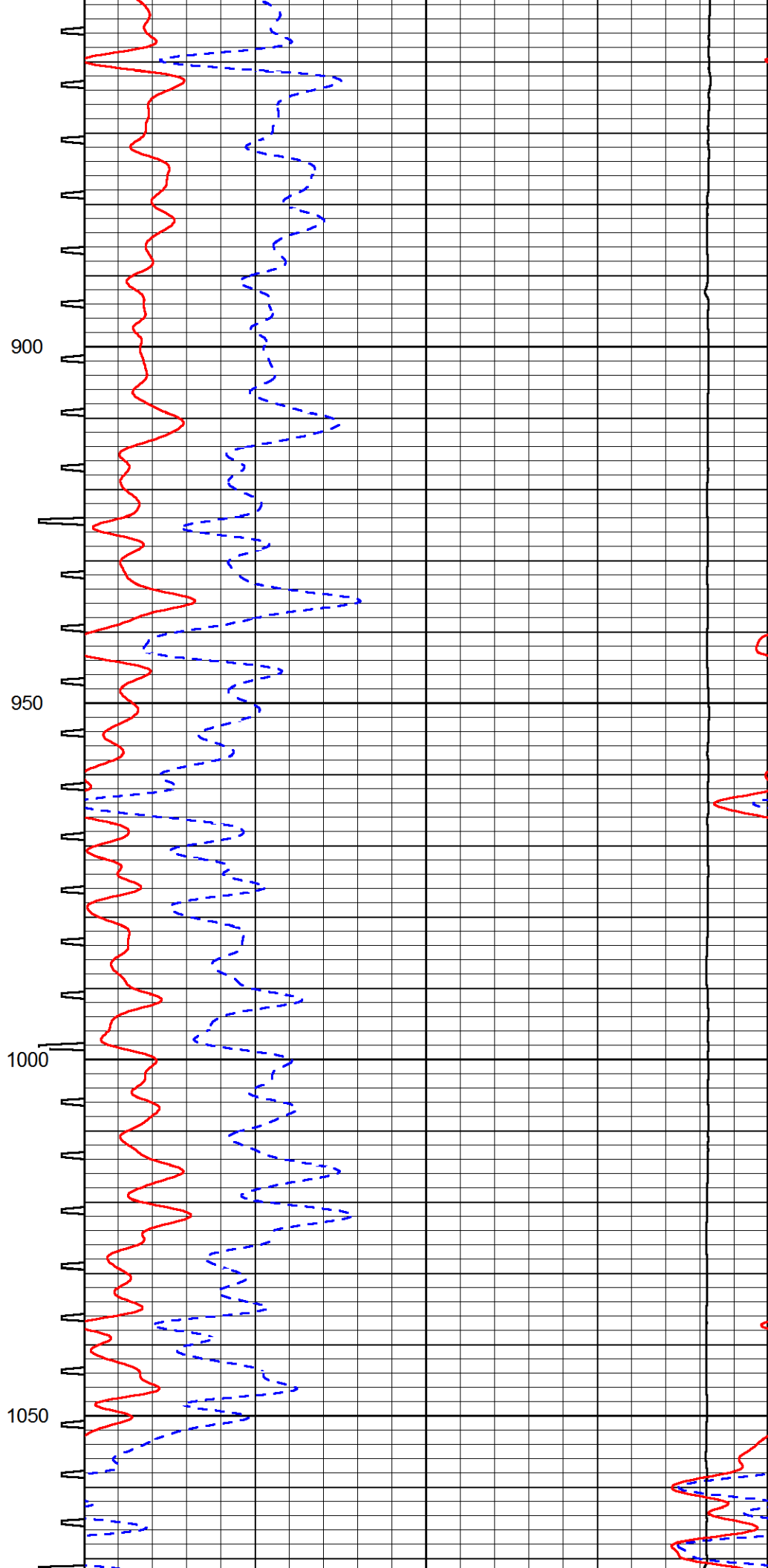
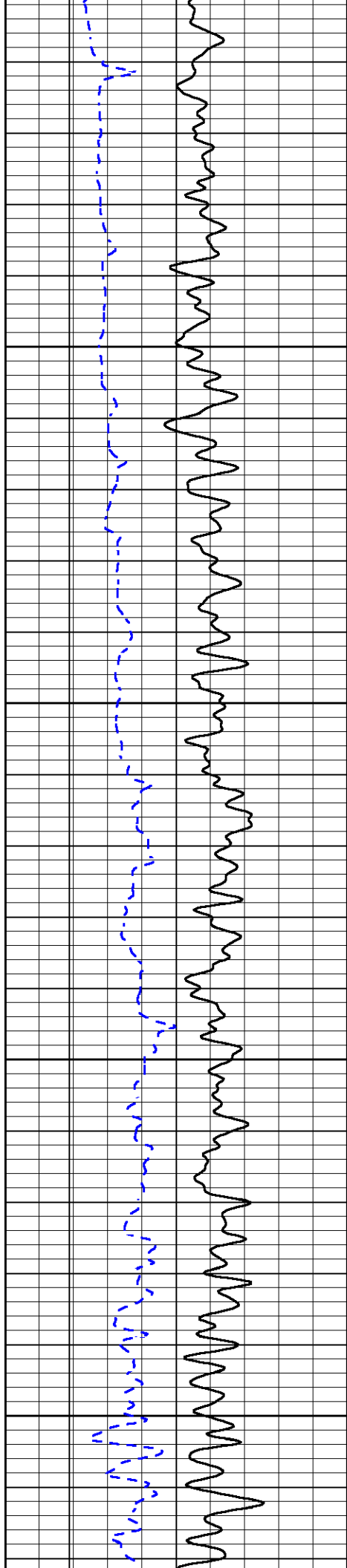
Database File murfin\_sharp\_c\_1\_6.db  
Dataset Pathname stackml/pass3.1  
Presentation Format sonic  
Dataset Creation Mon Mar 09 01:24:08 2020  
Charted by Depth in Feet scaled 1:240

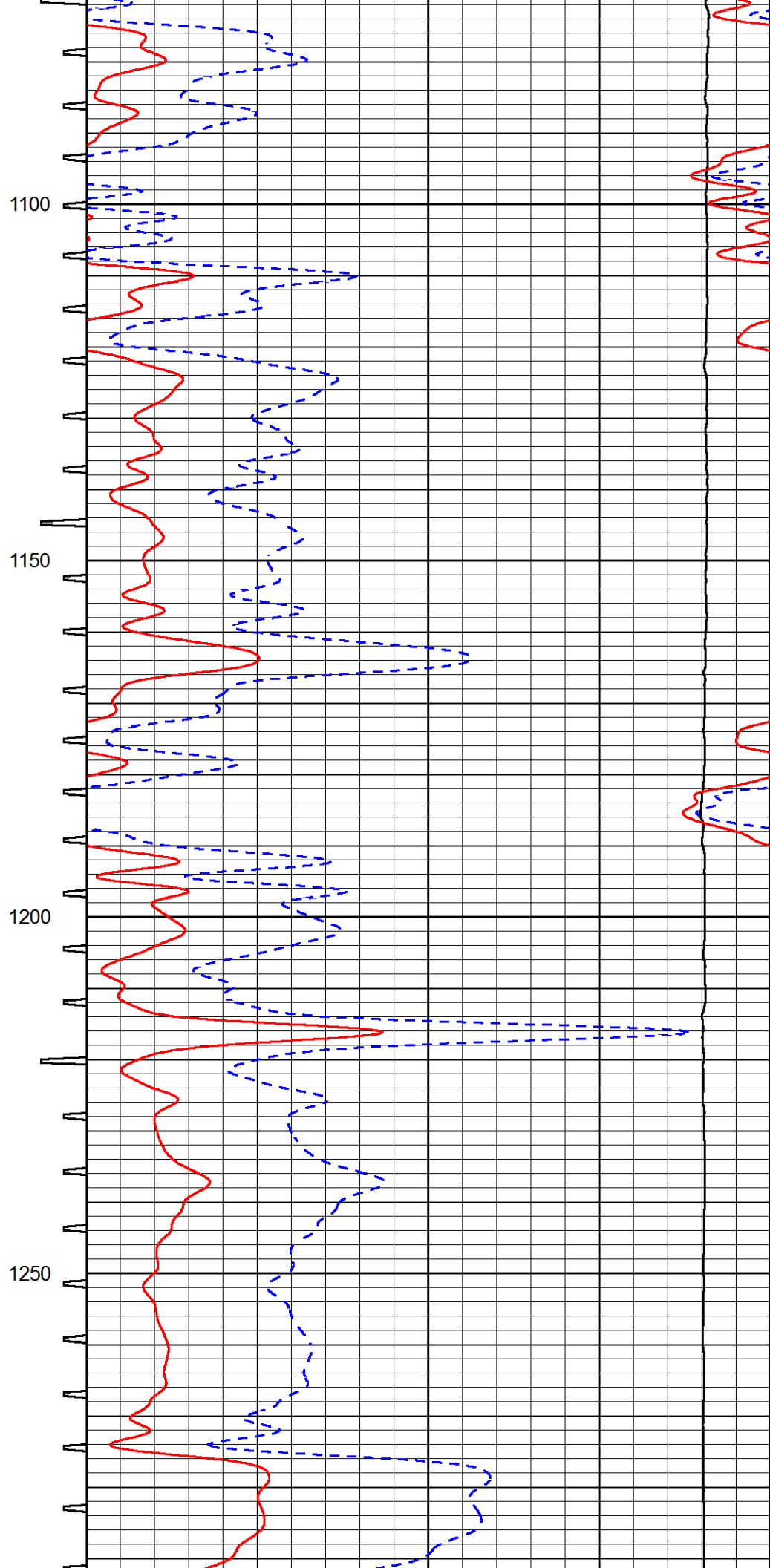
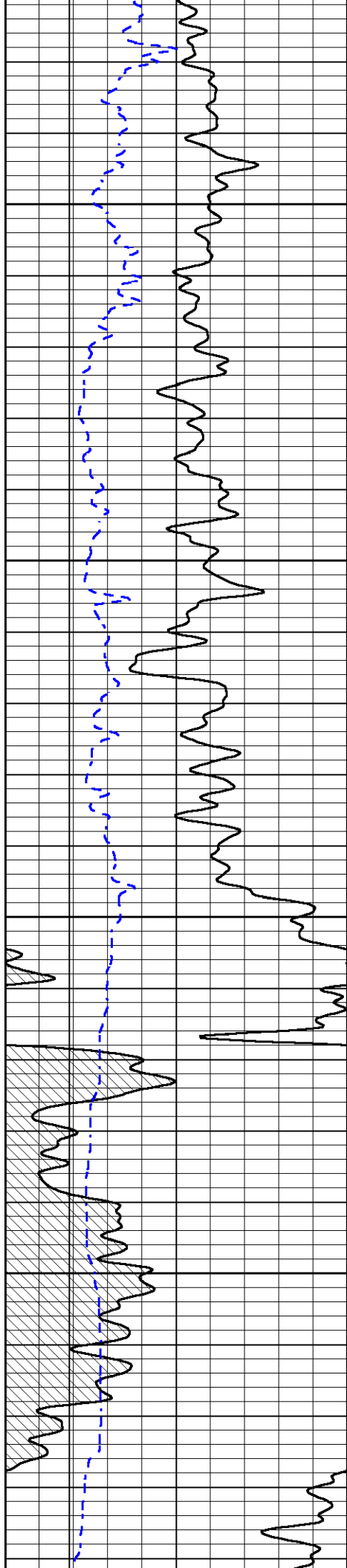
0	GAMMA RAY (GAPI)	150	SONIC INT	140	DELTA TIME (usec/ft) (usec/ft)	40
6	CALIPER (in)	16	TRAVEL TIME	30	SONIC POROSITY (pu)	-10
6	BIT SIZE	16	(msec)	15000	LINE TENSION (lb)	0

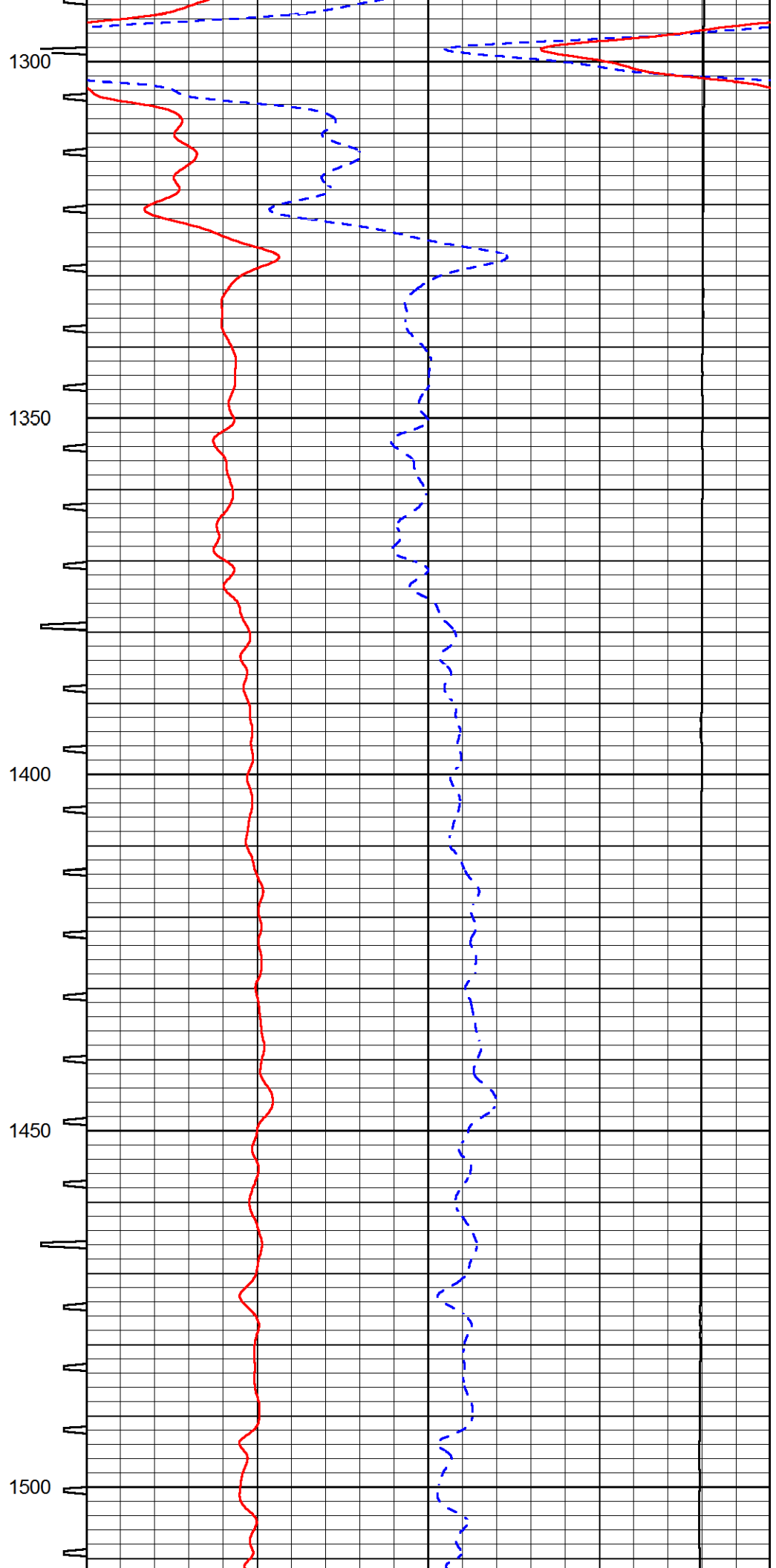
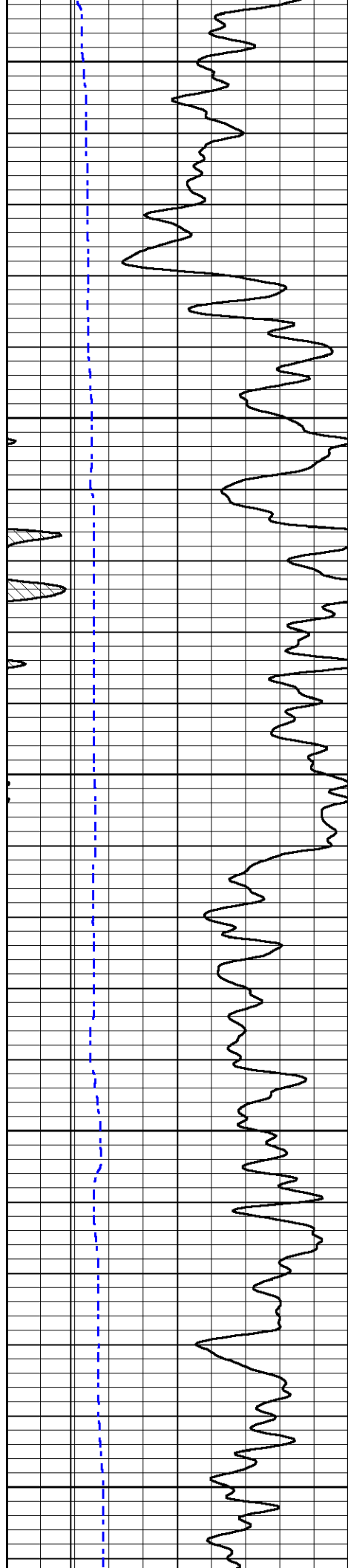


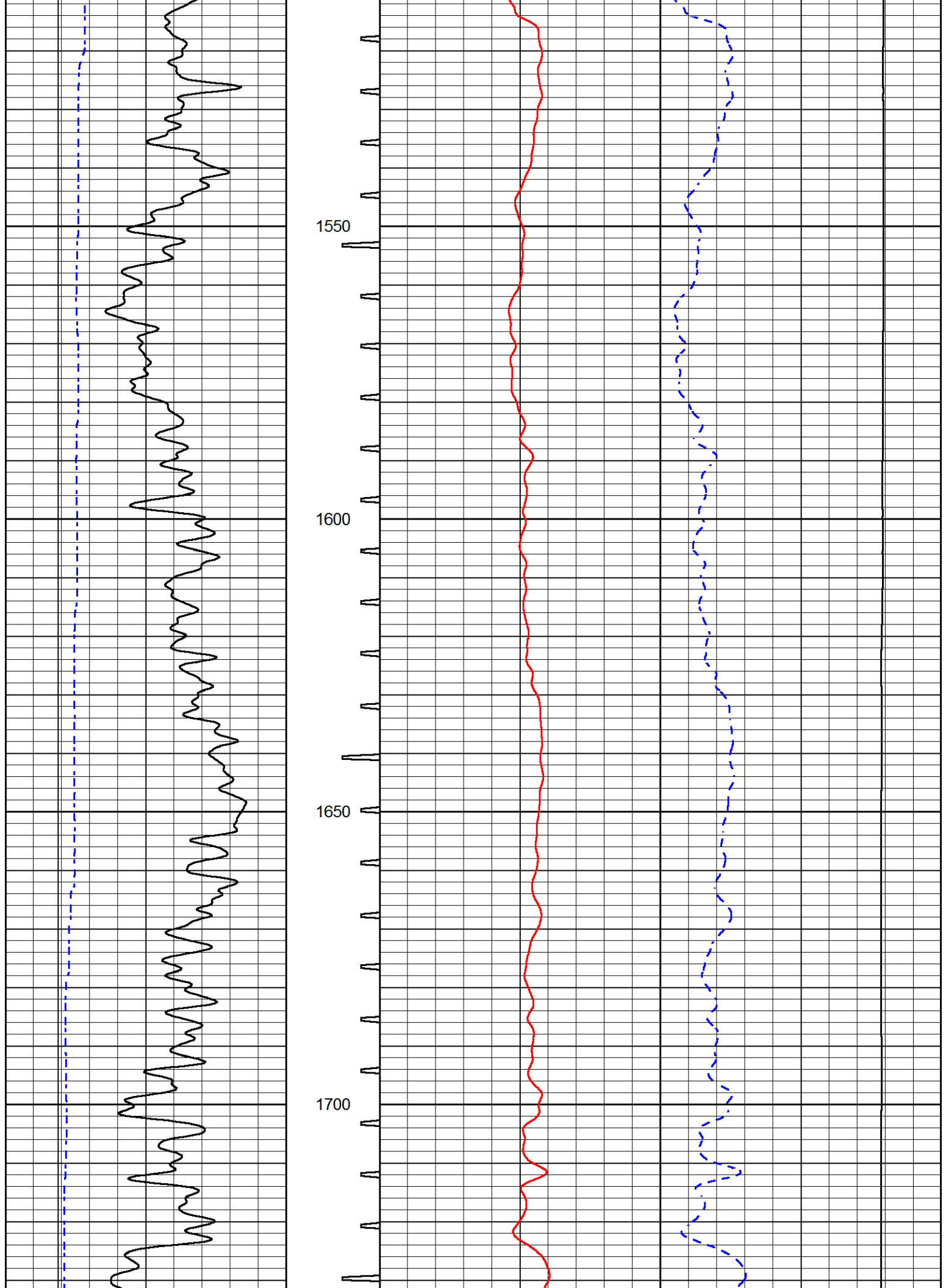


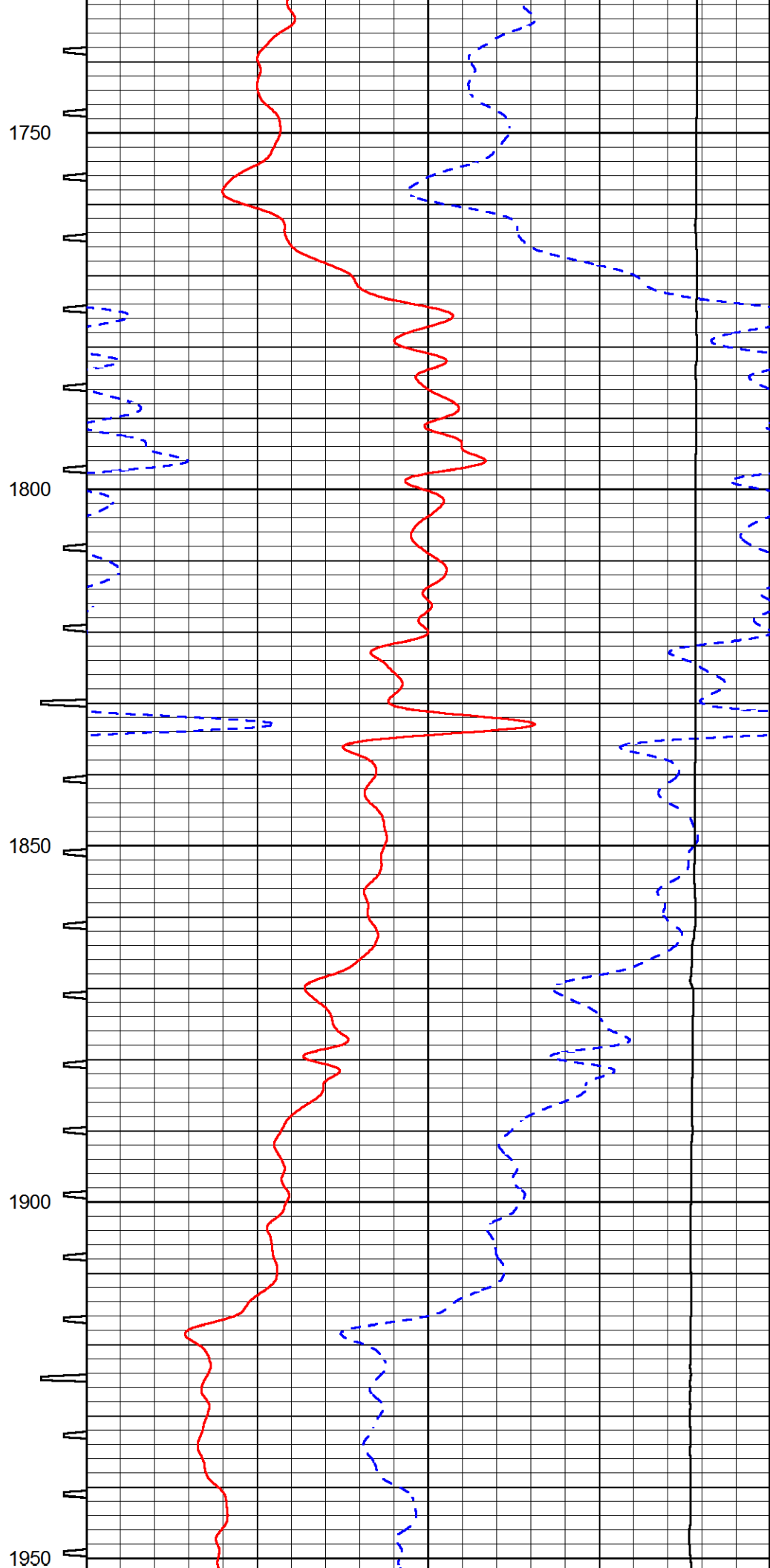
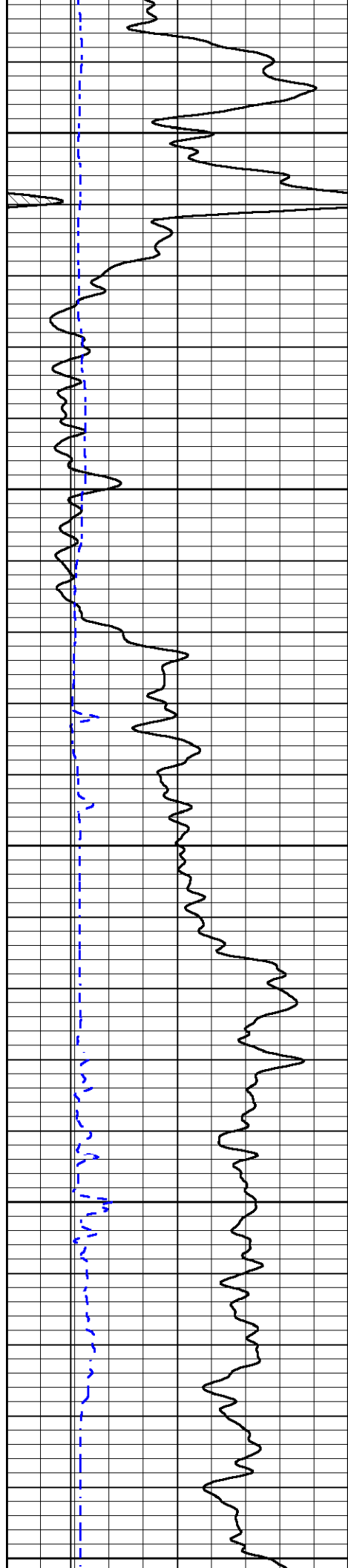


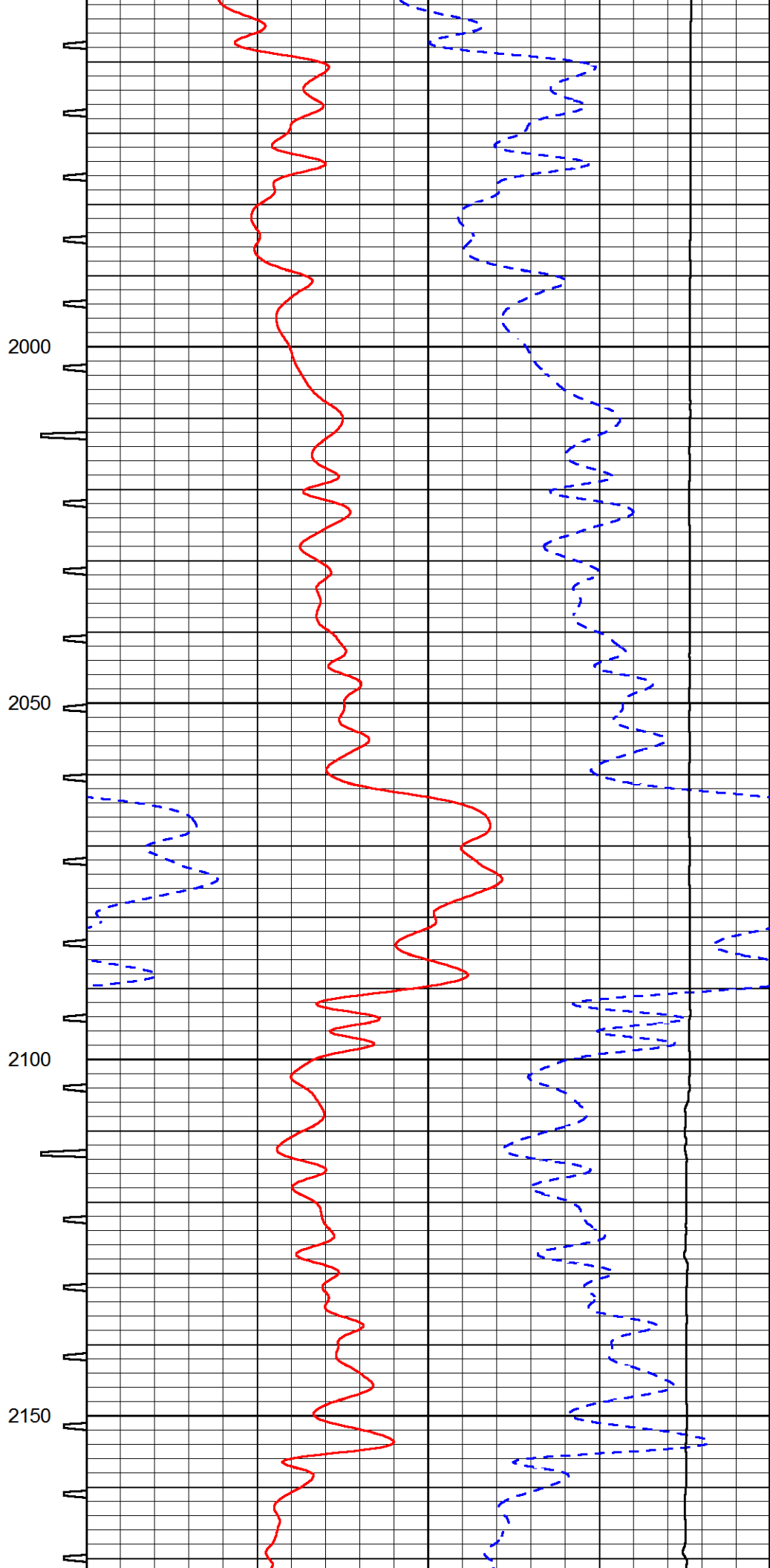
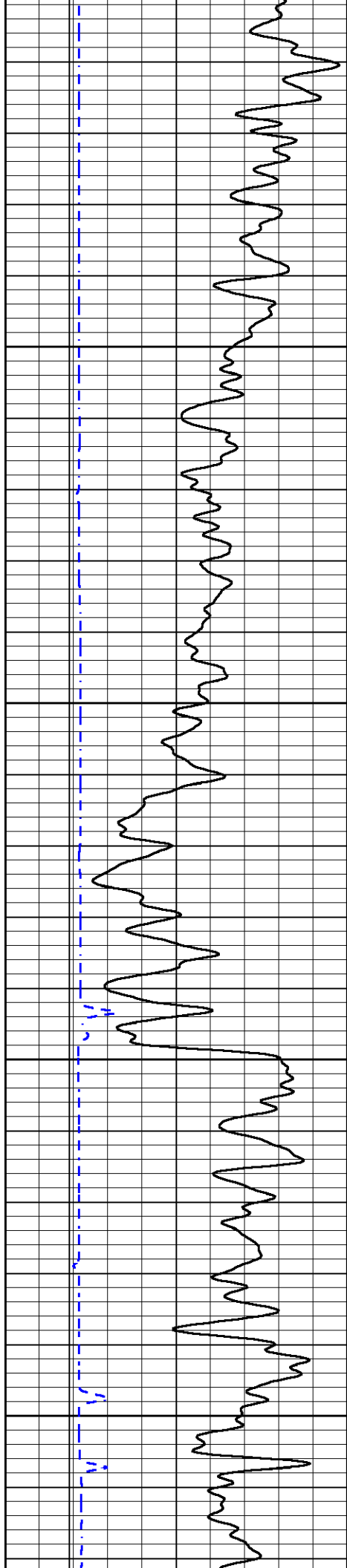


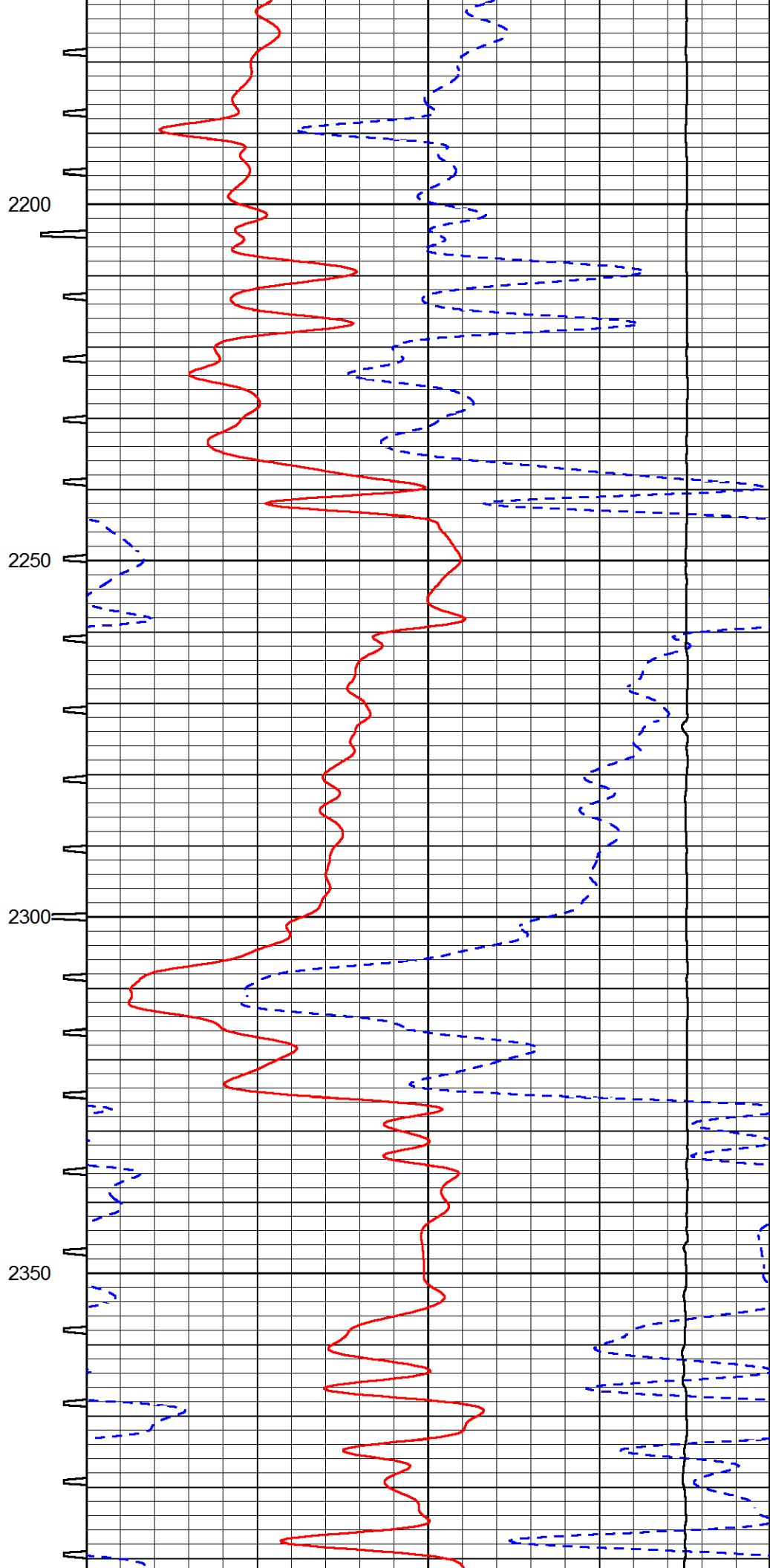
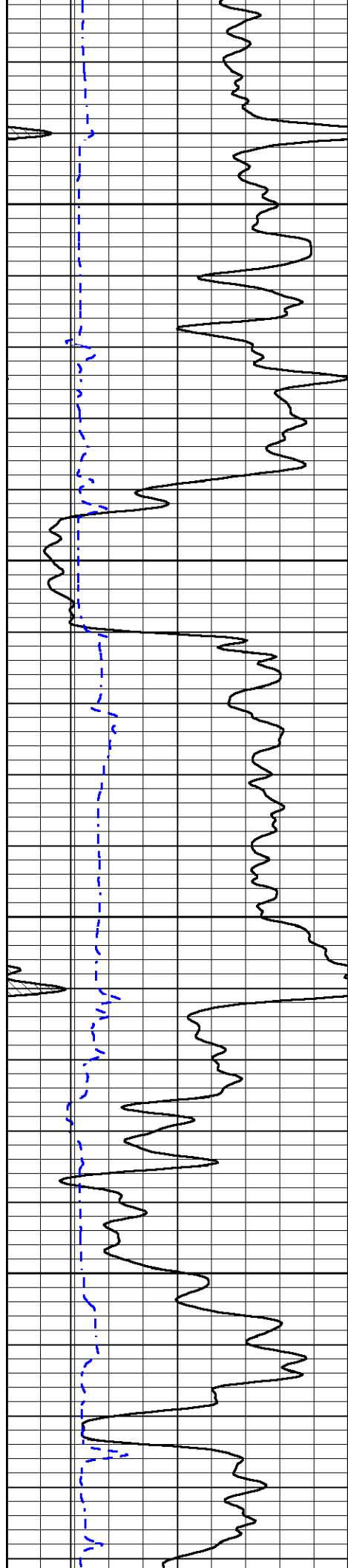


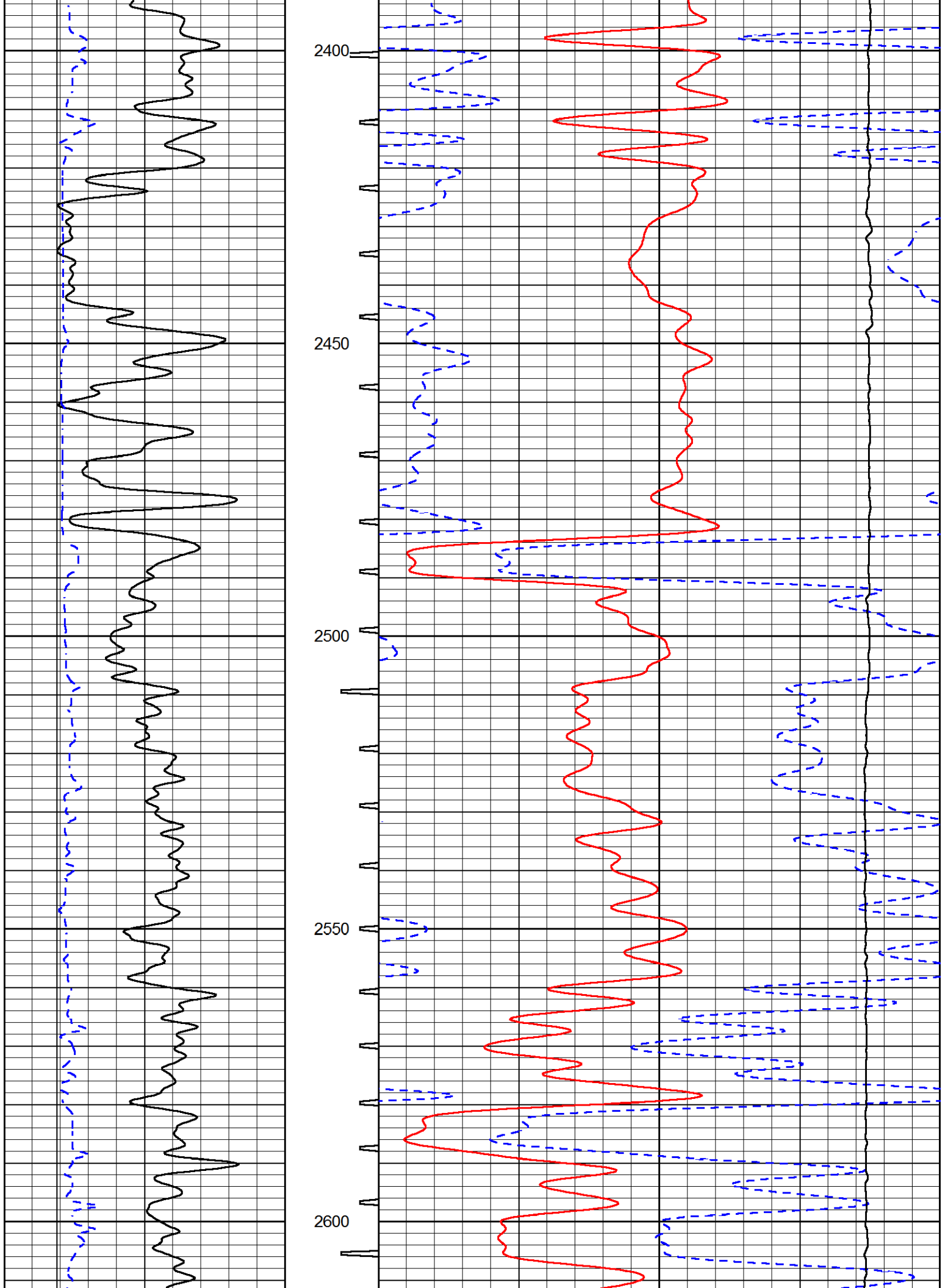


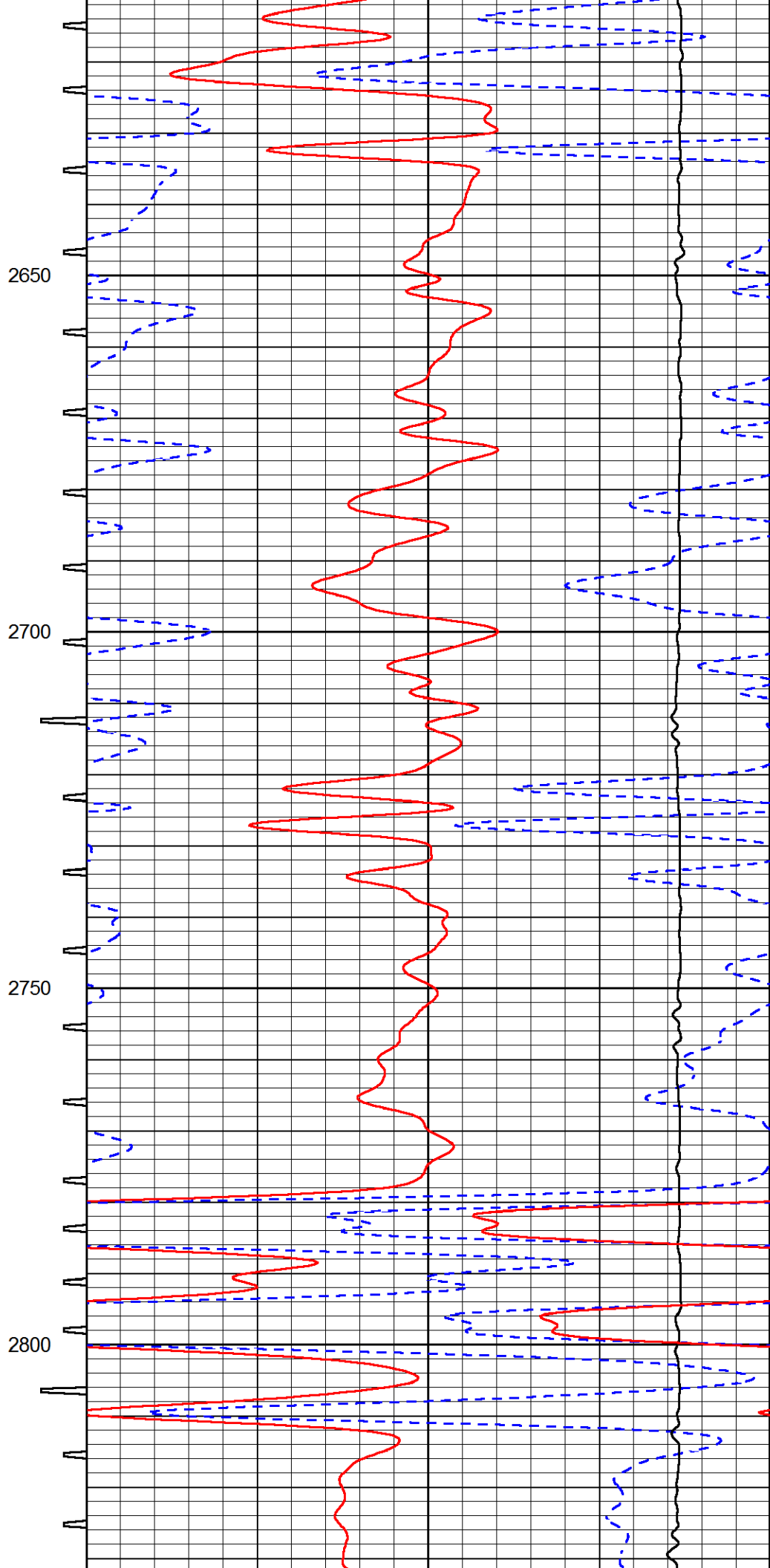
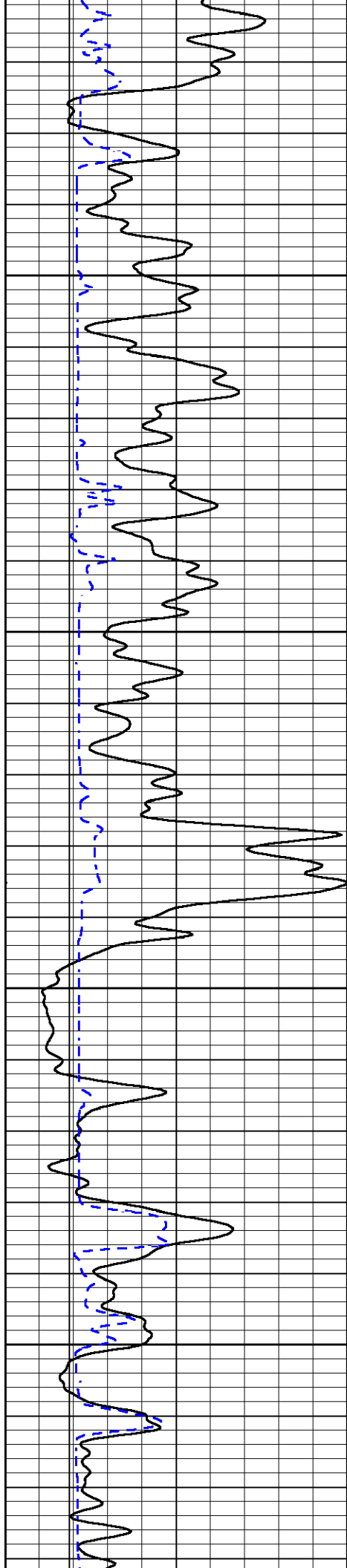


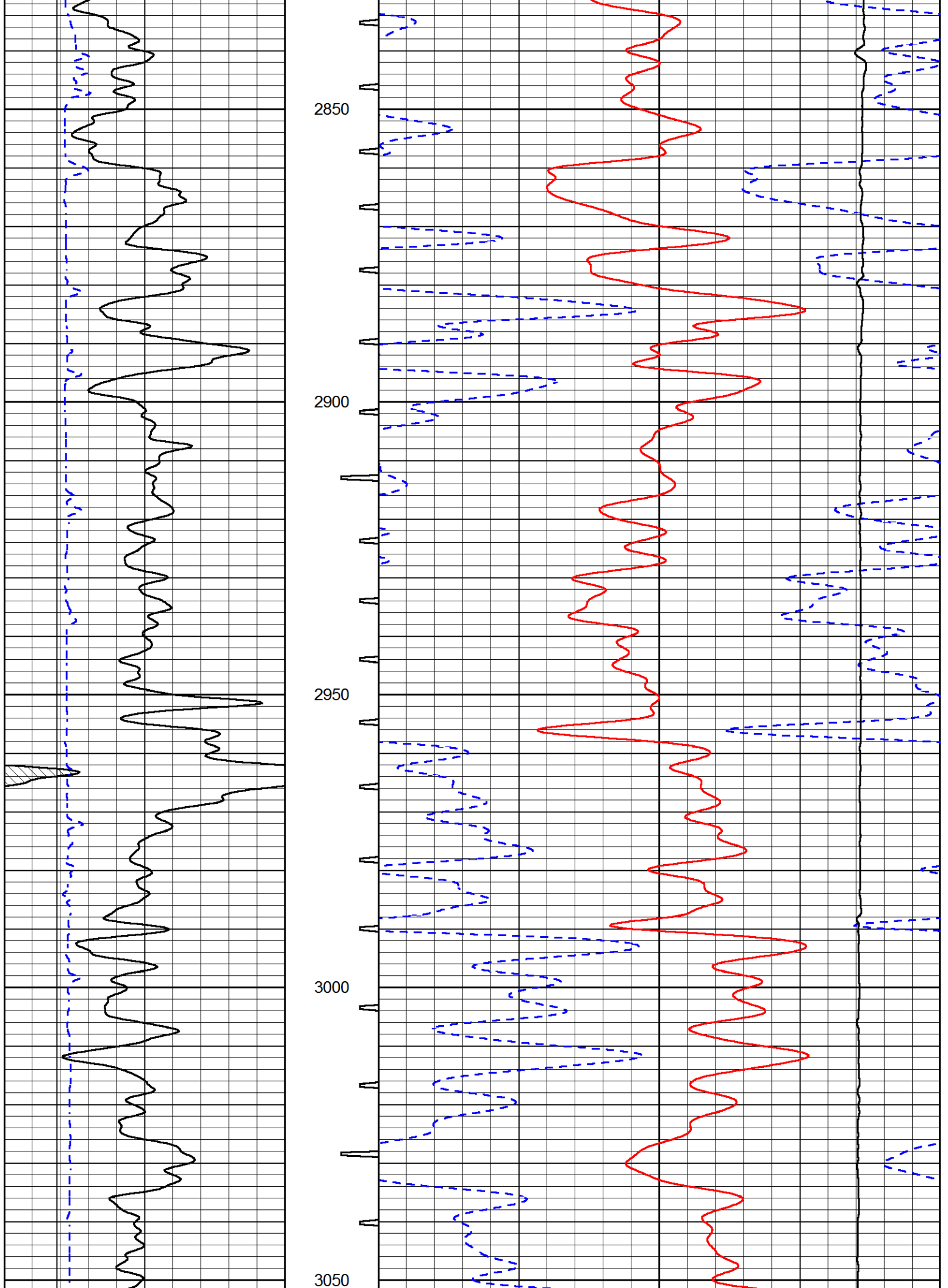


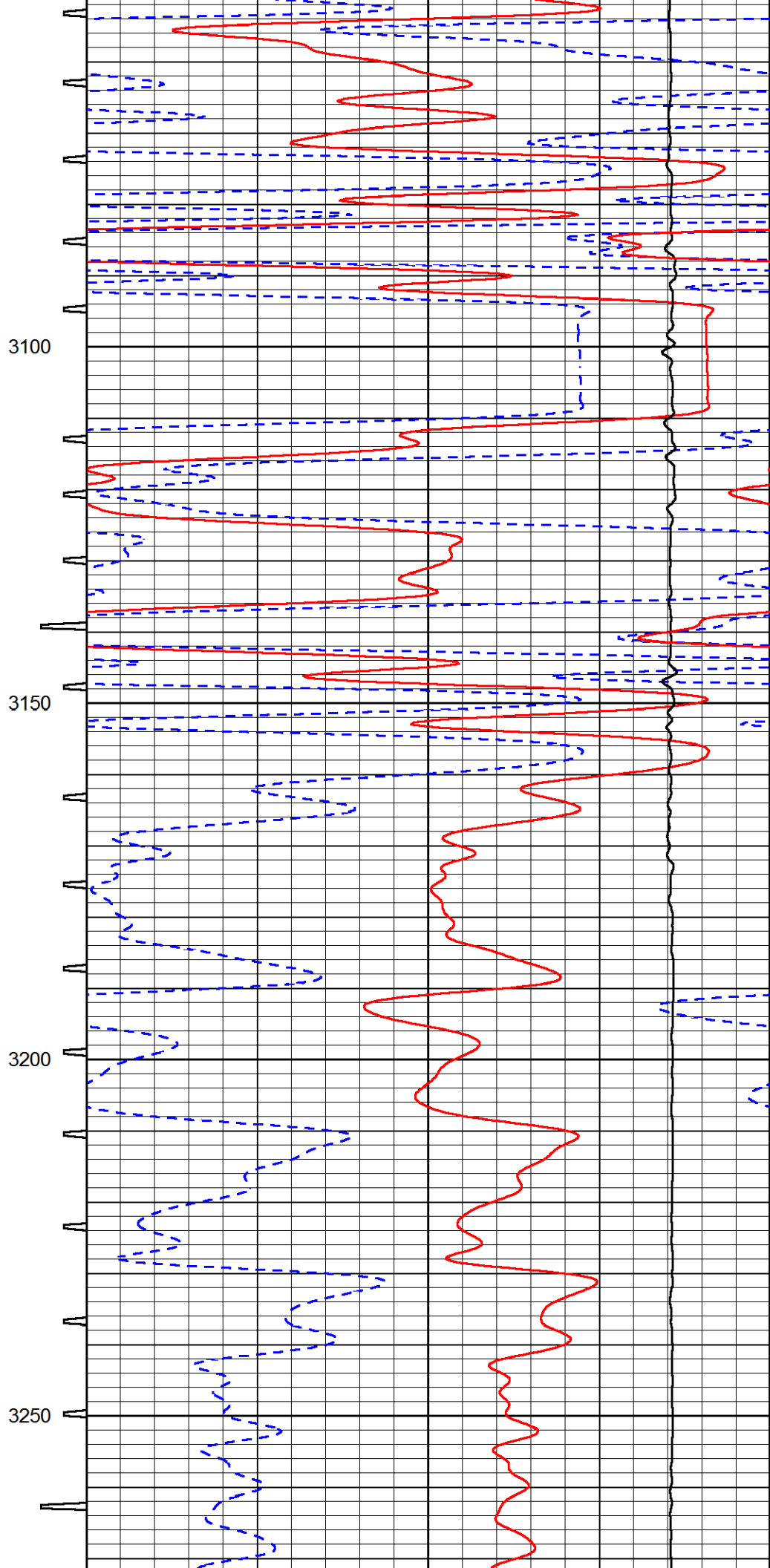
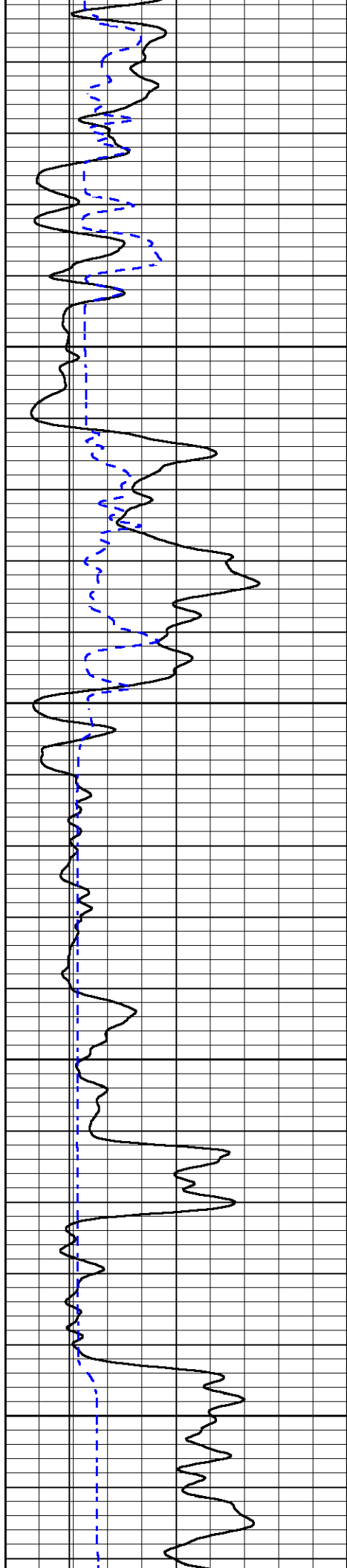


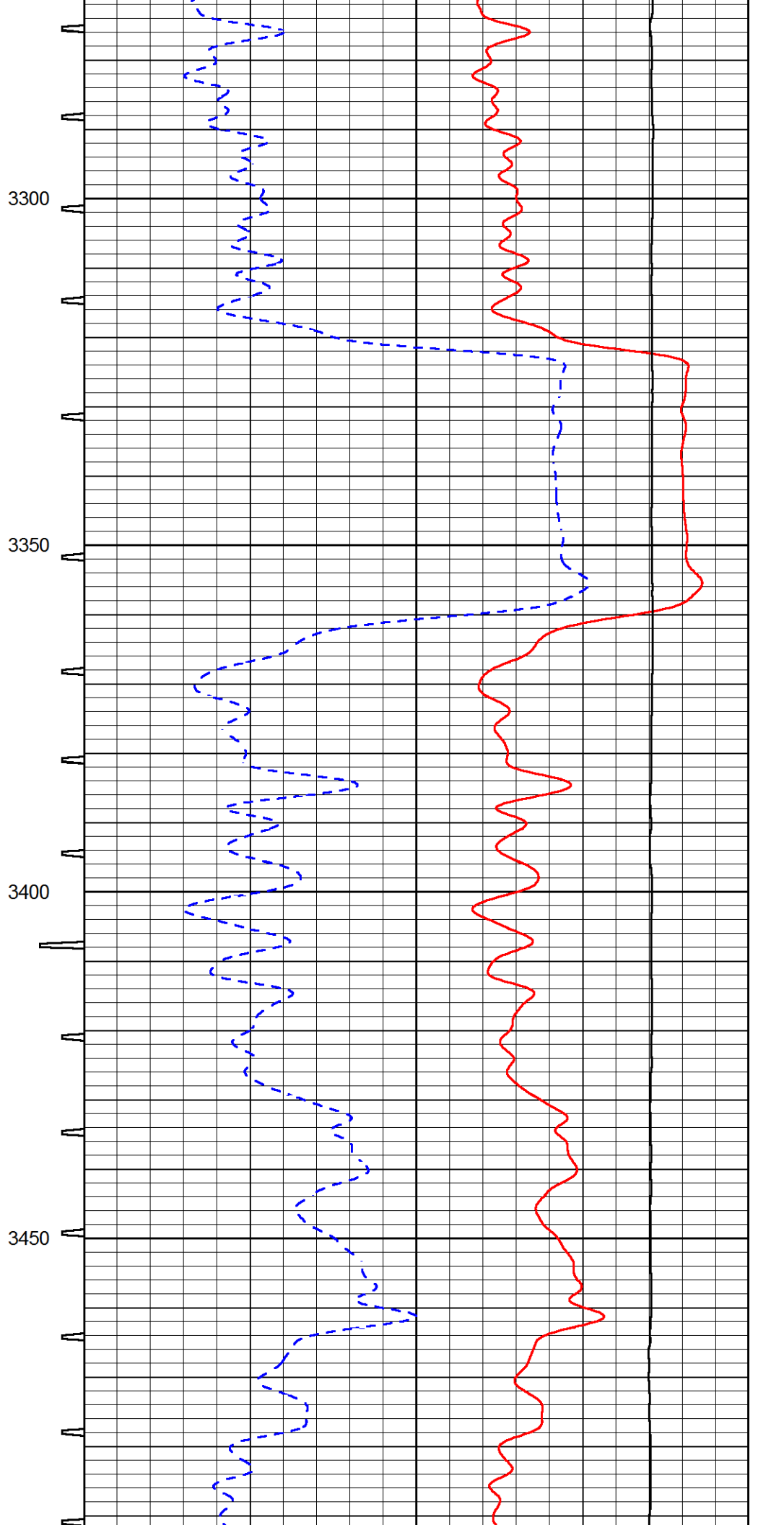
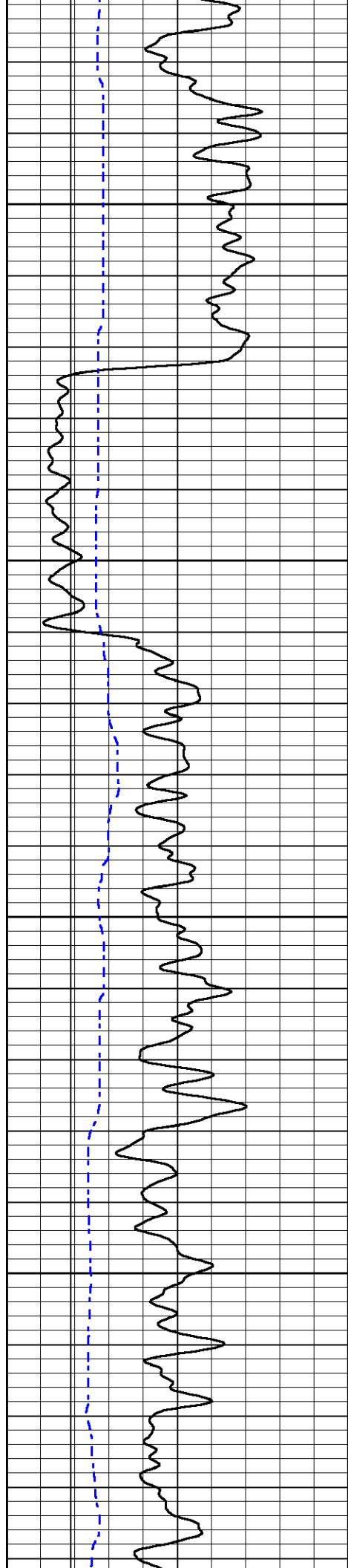


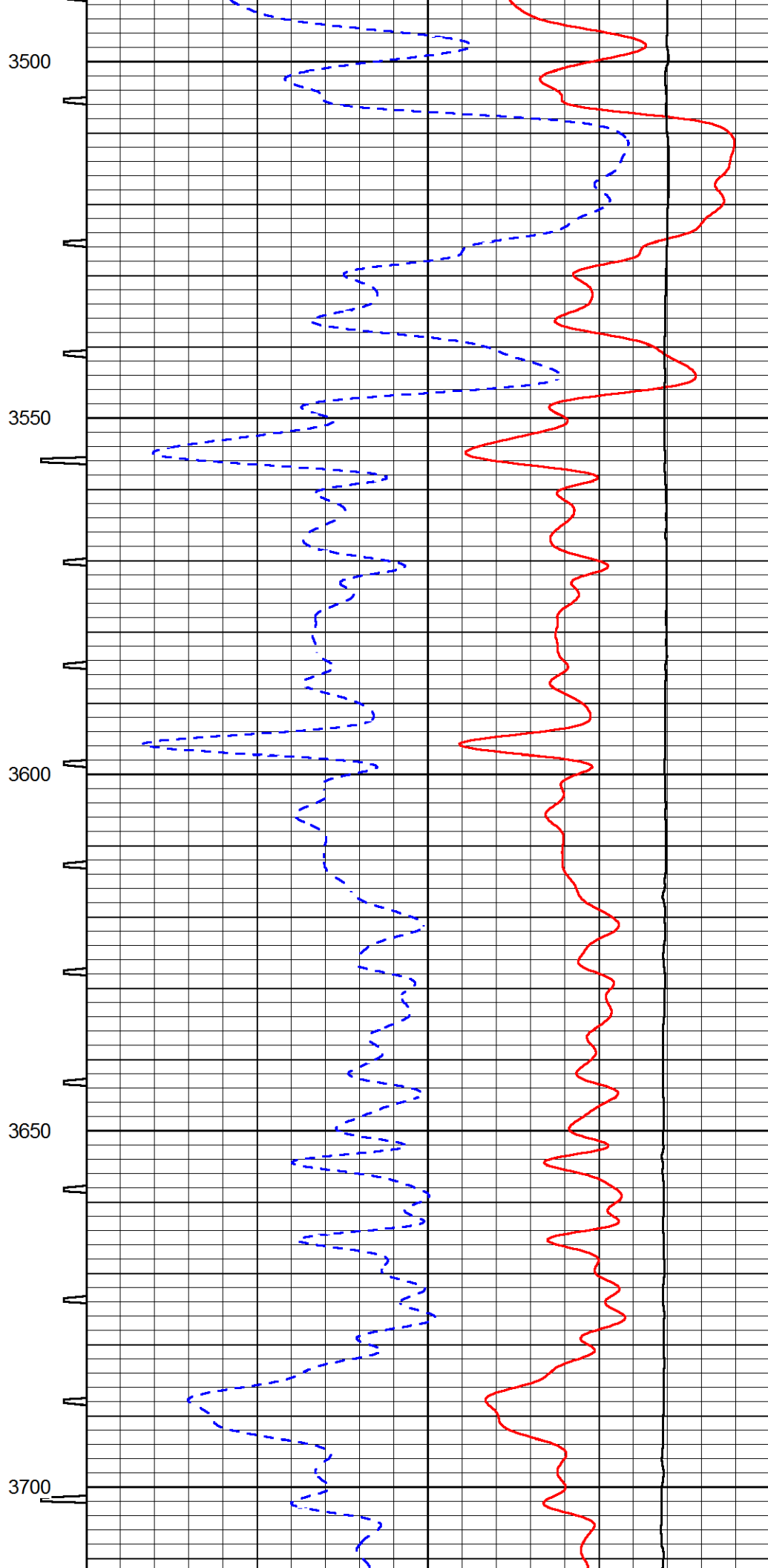
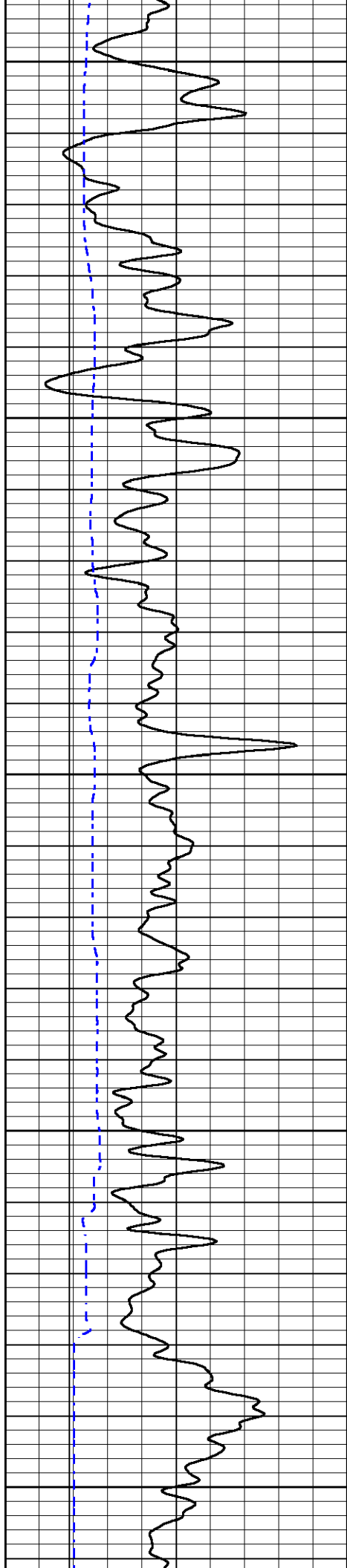


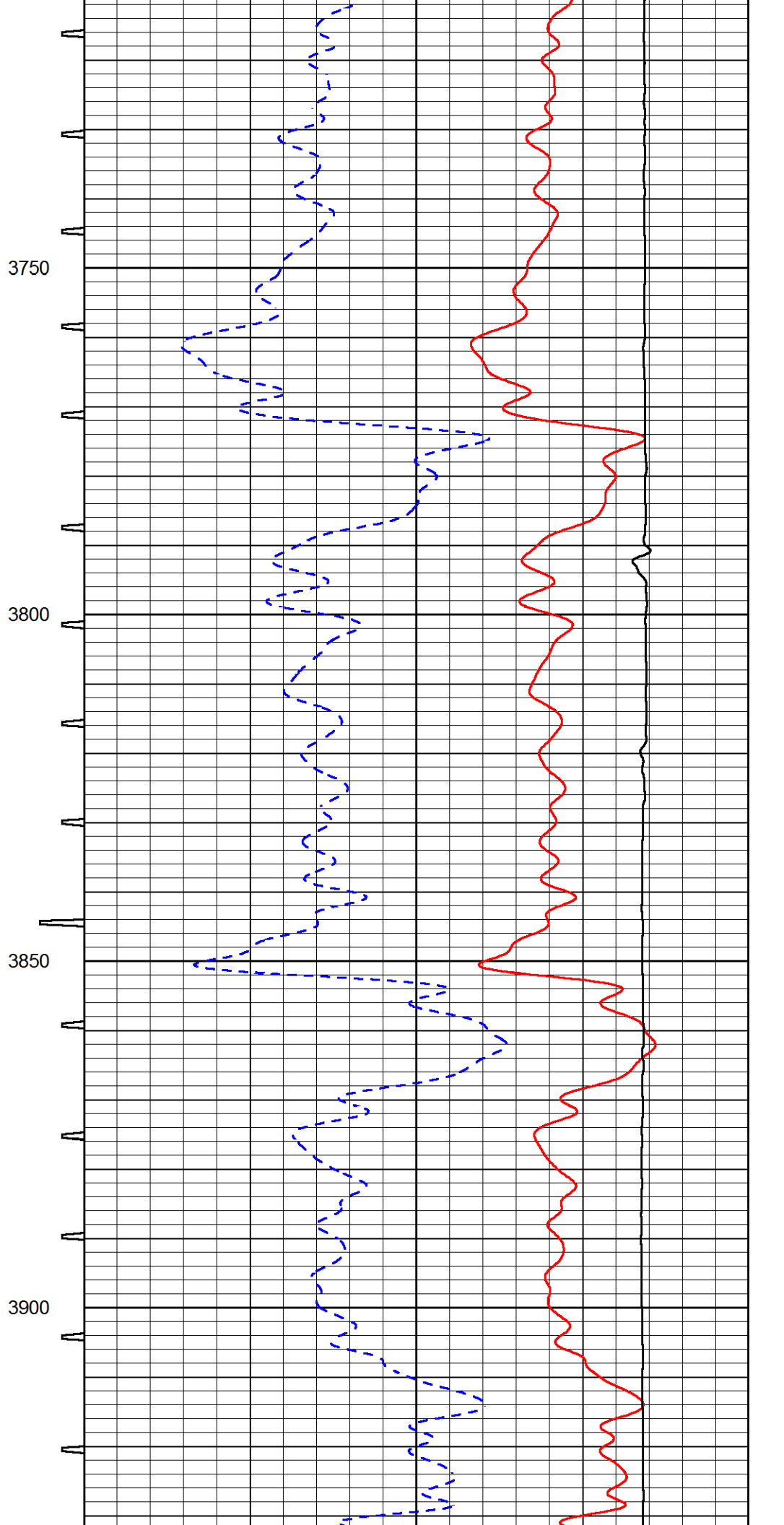
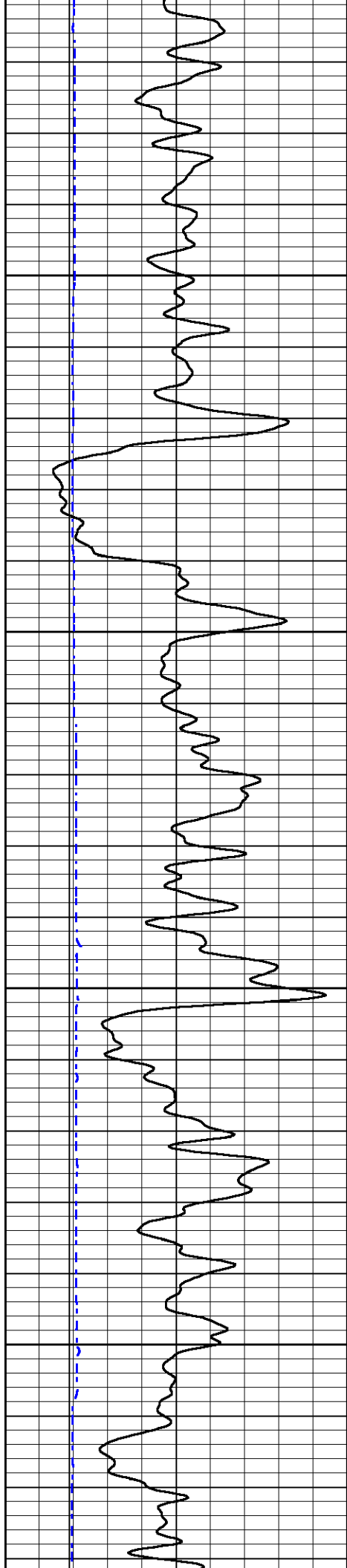


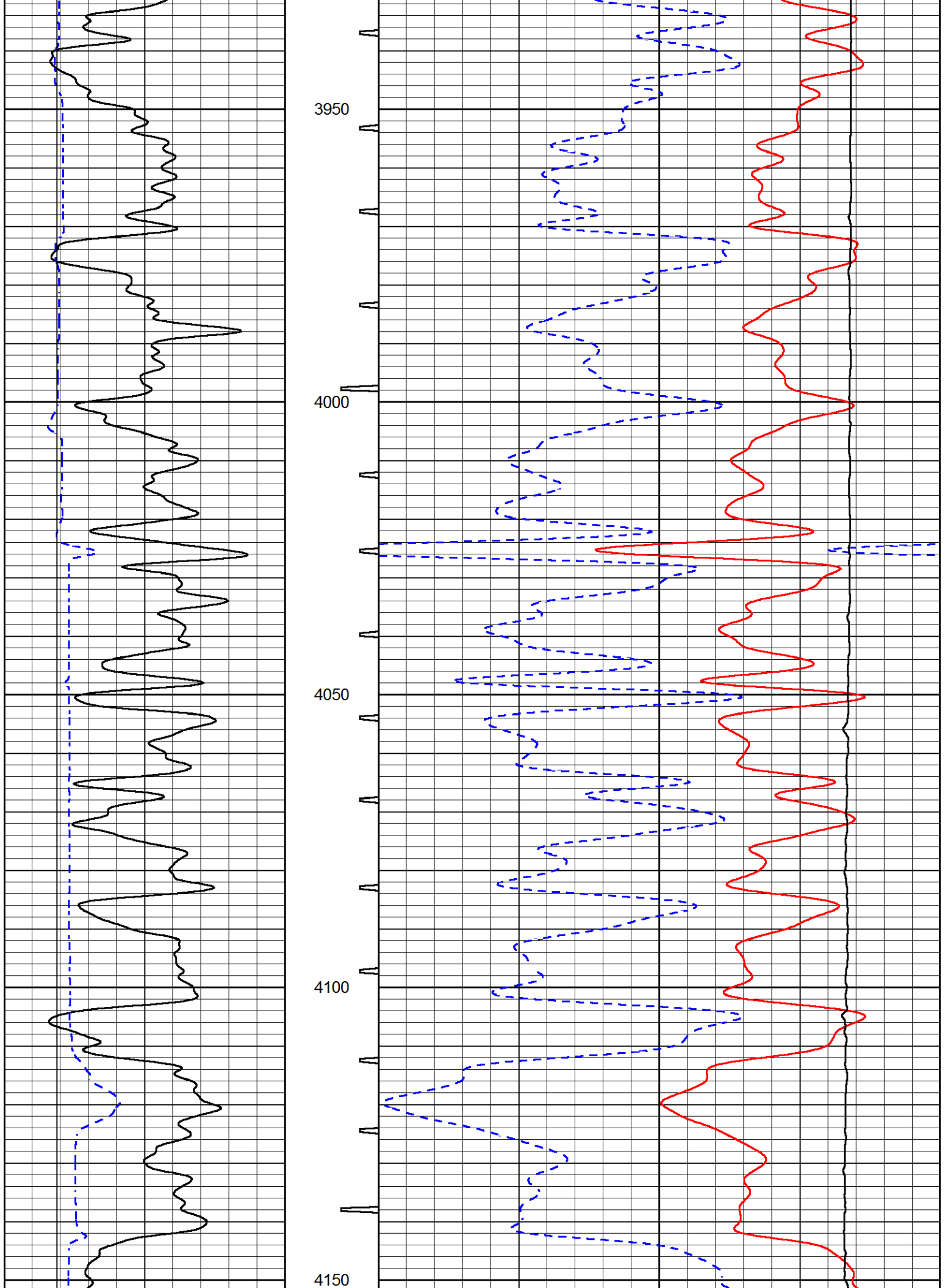


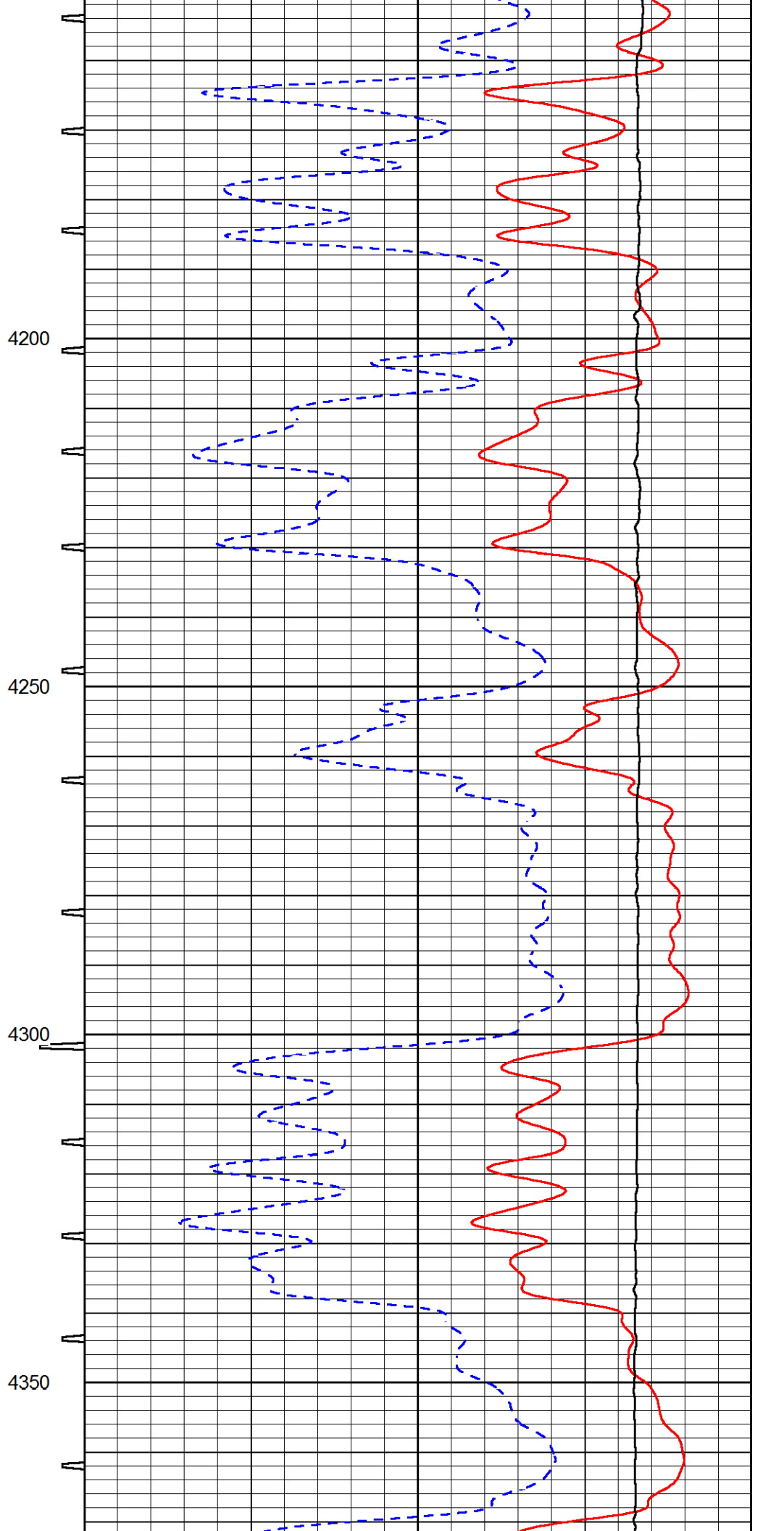
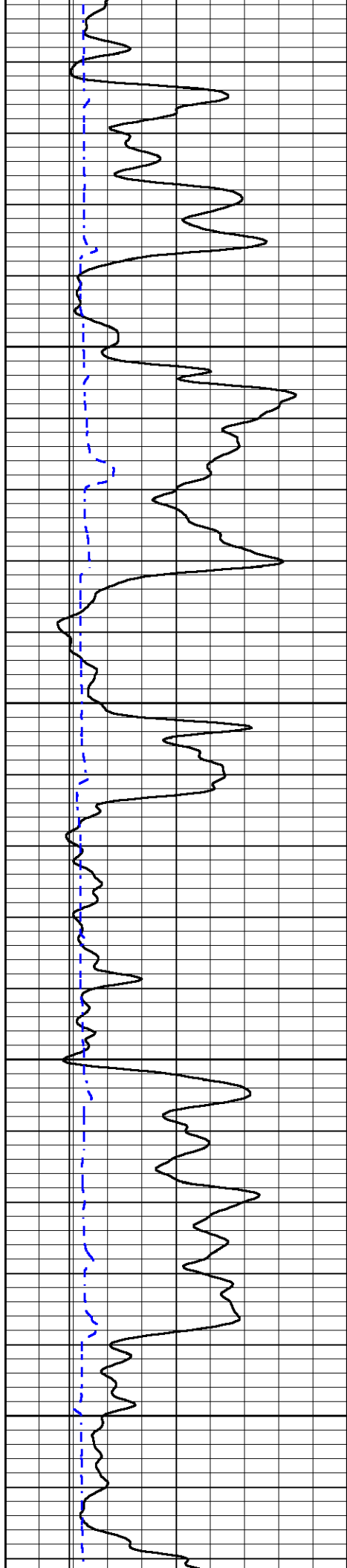


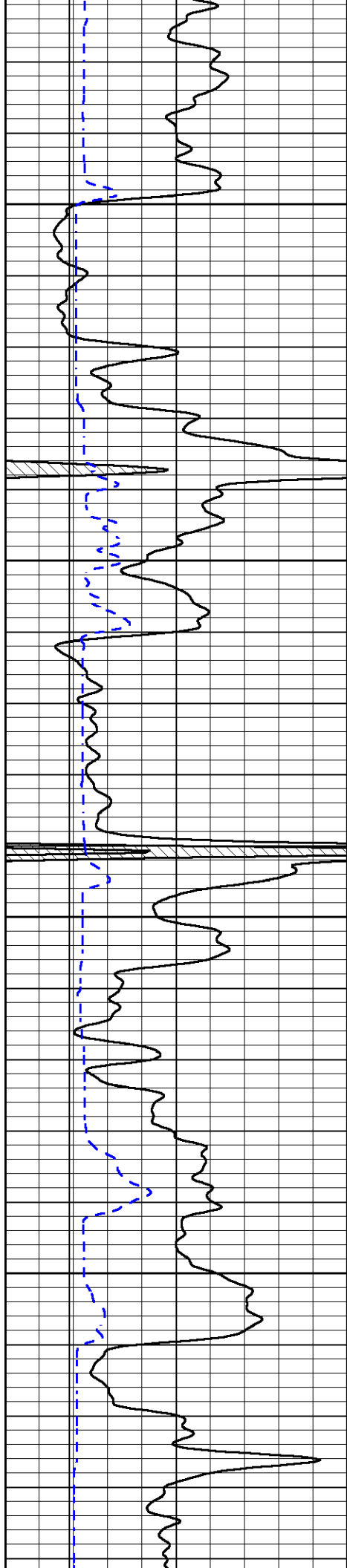










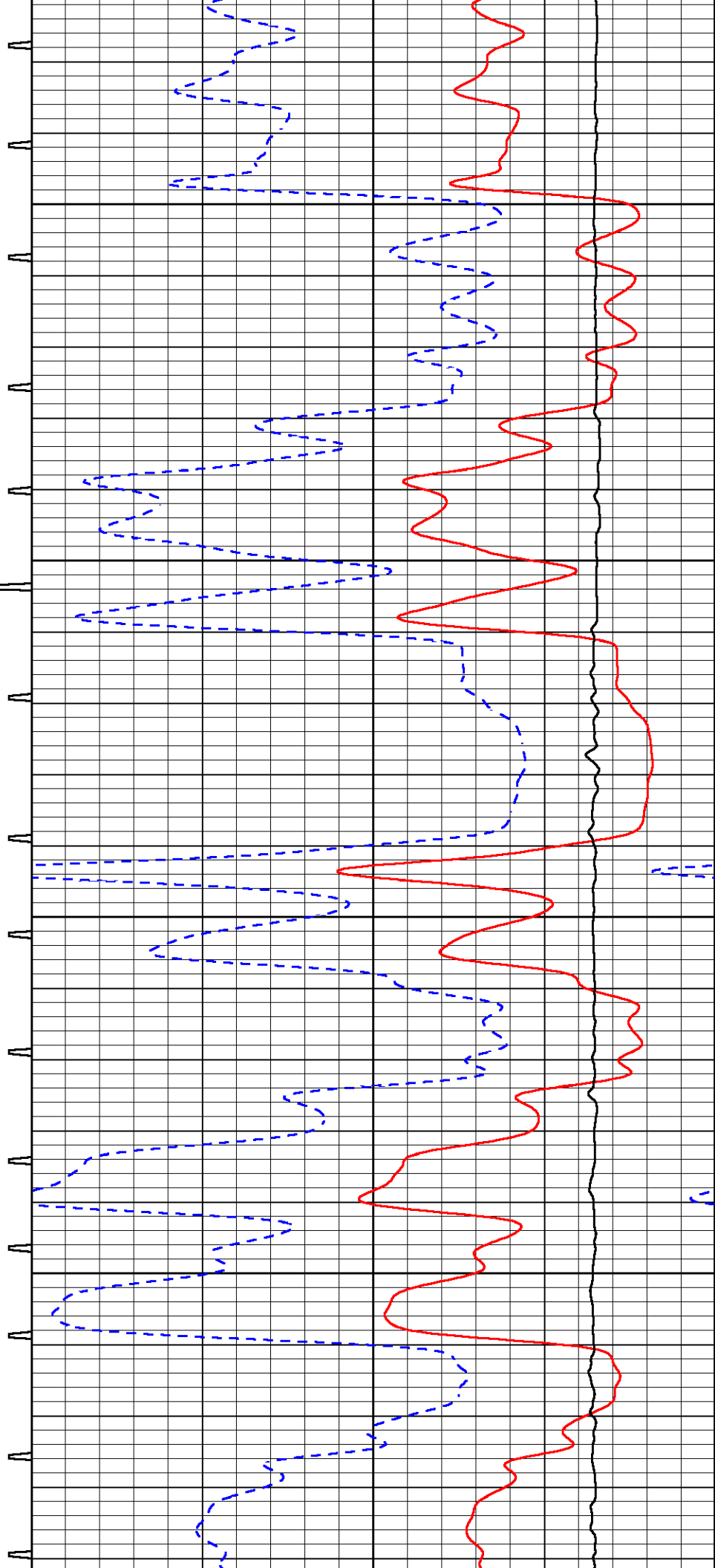


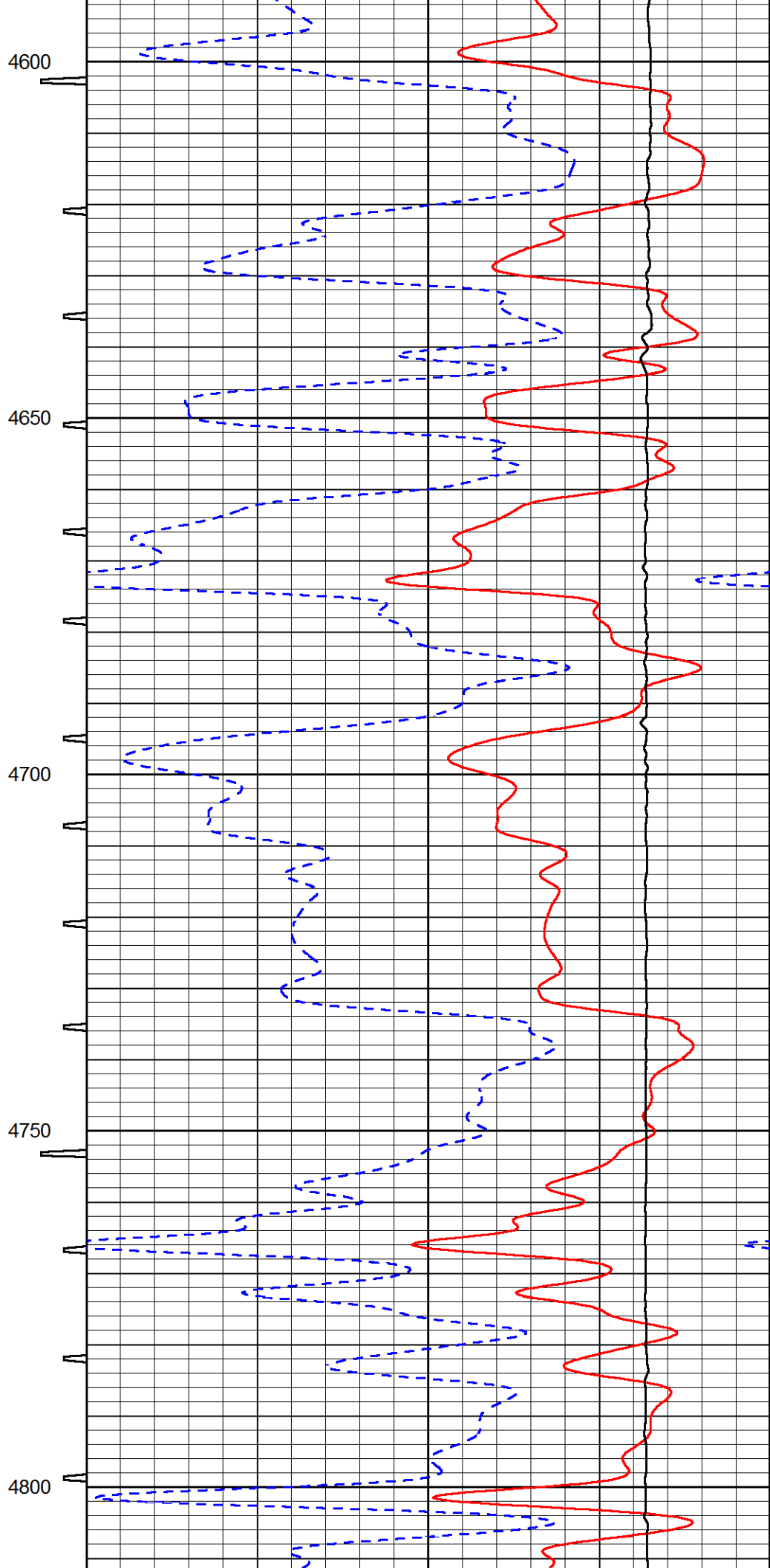
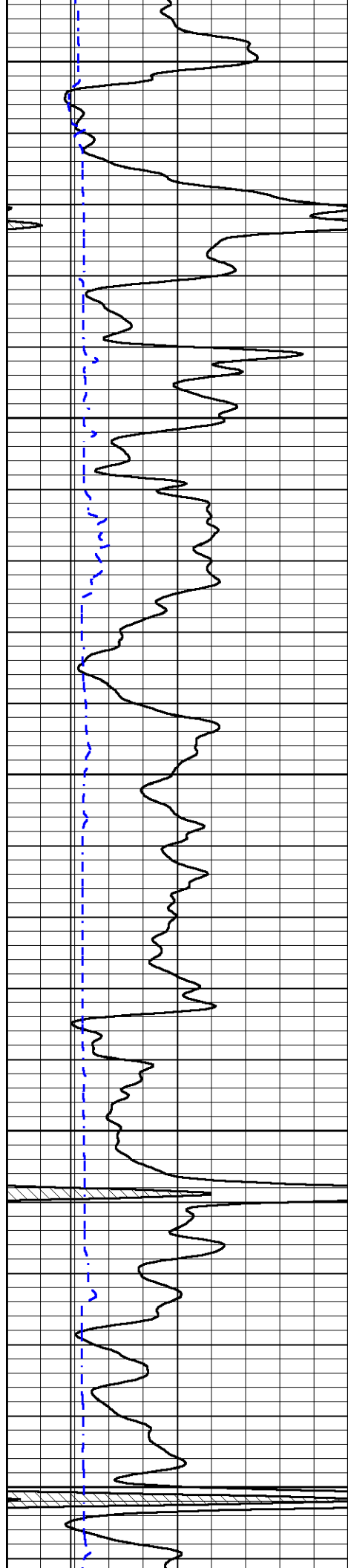
4400

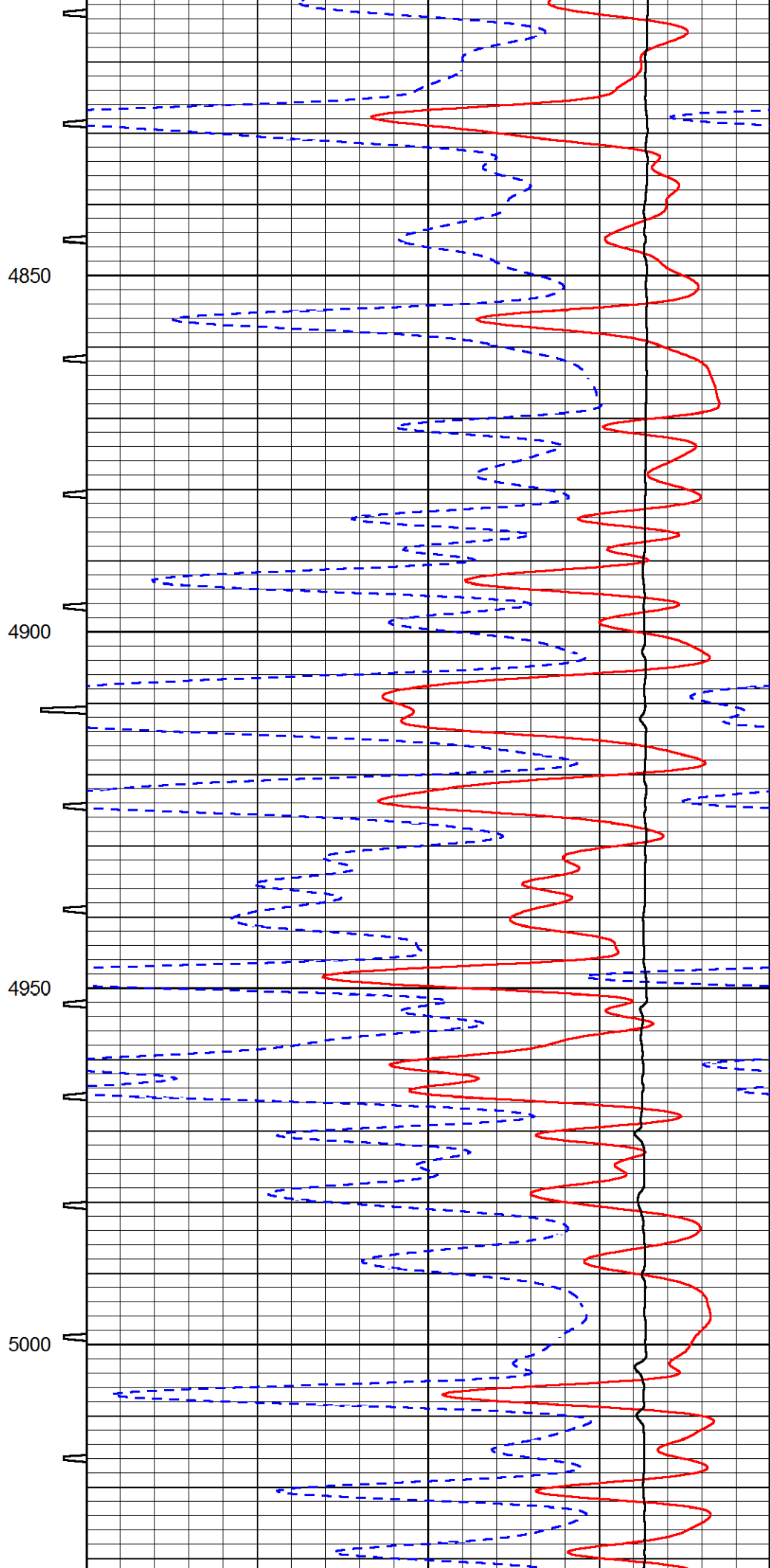
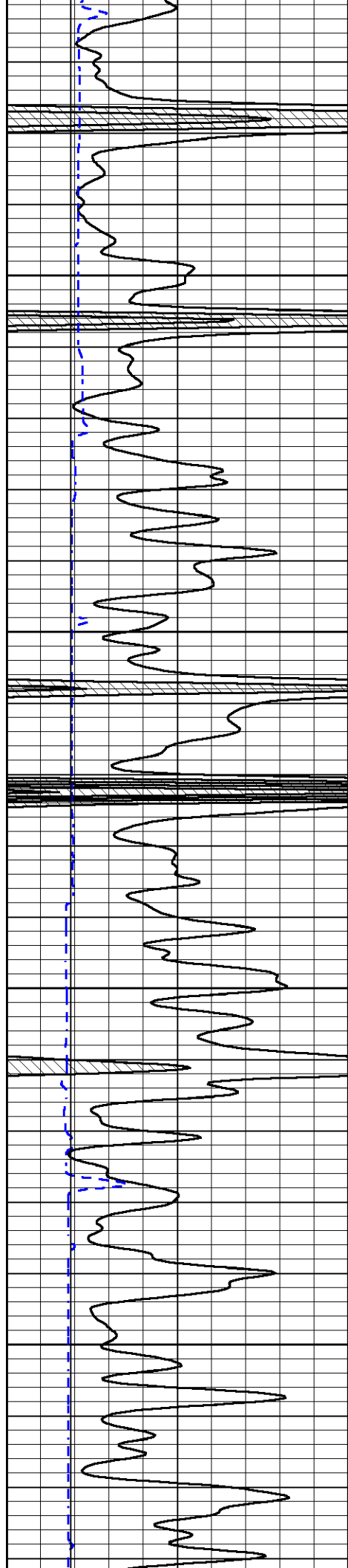
4450

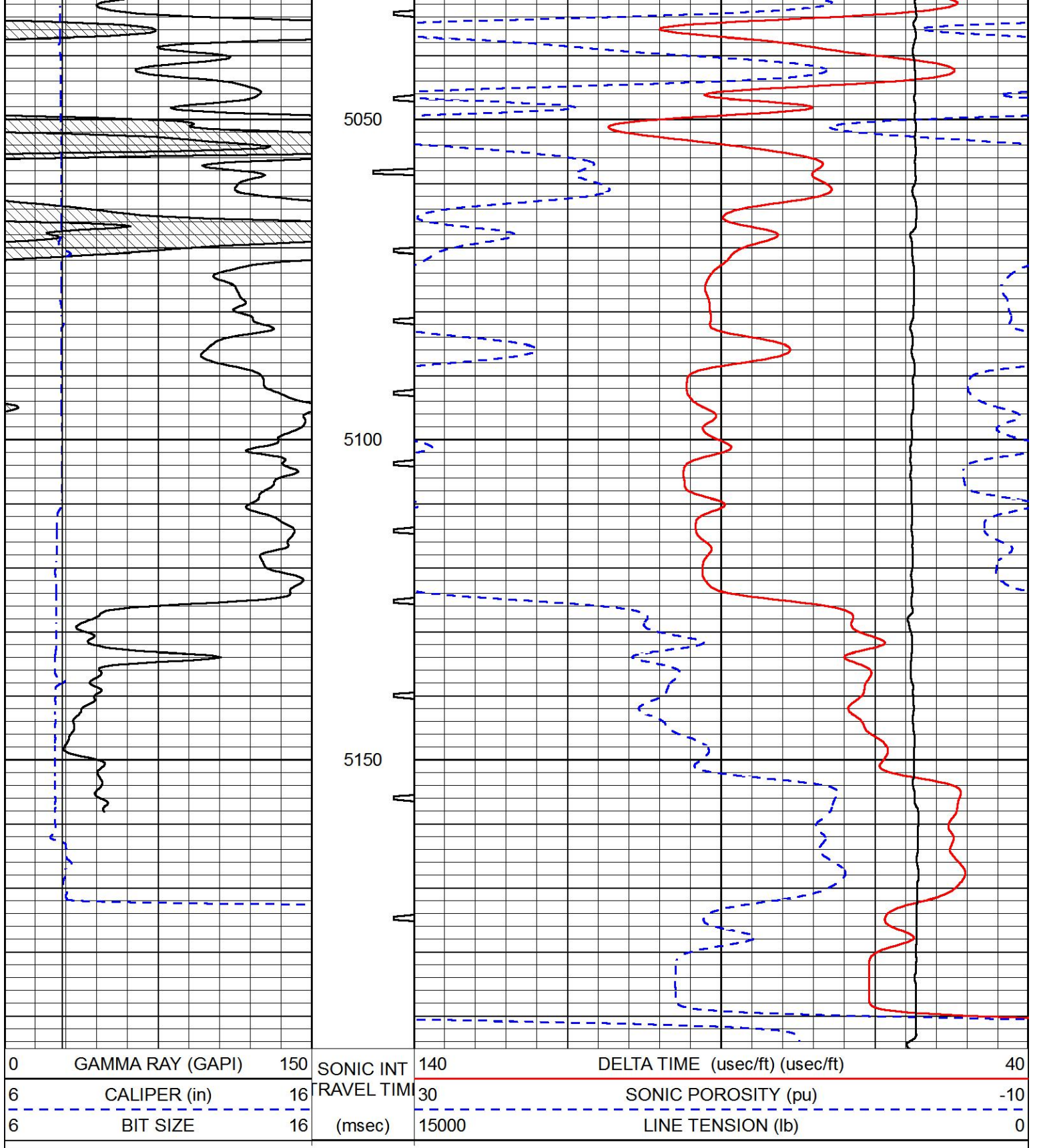
4500

4550





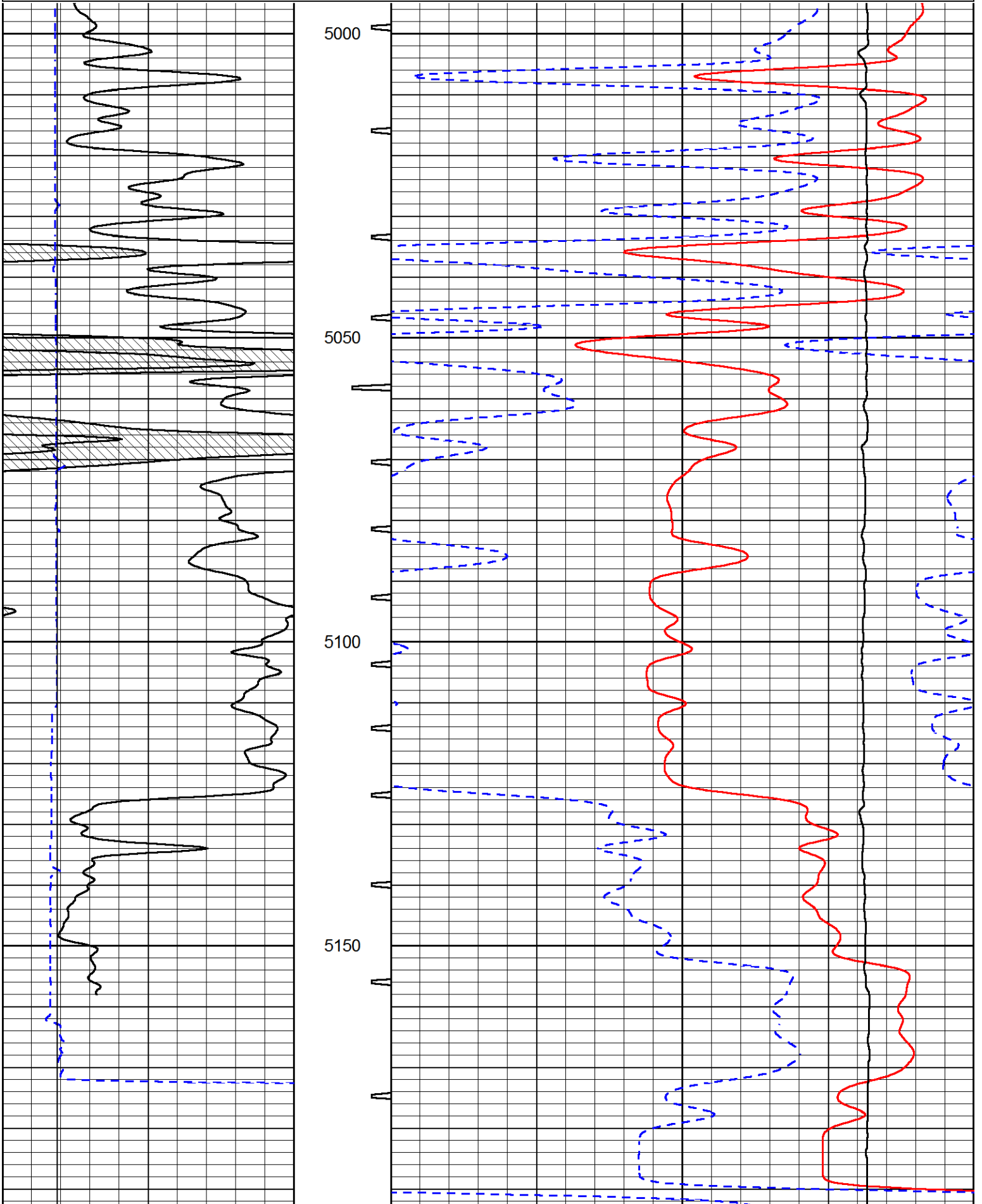




# REPEAT SECTION

Database File murfin\_sharp\_c\_1\_6.db  
 Dataset Pathname stackml/pass2.1  
 Presentation Format sonic  
 Dataset Creation Mon Mar 09 00:24:14 2020  
 Client Name

0	GAMMA RAY (GAPI)	150	SONIC INTERVAL TIME (msec)	140	DELTA TIME (usec/ft) (usec/ft)	40
6	CALIPER (in)	16	SONIC INTERVAL TIME (msec)	30	SONIC POROSITY (pu)	-10
6	BIT SIZE	16	(msec)	15000	LINE TENSION (lb)	0



0	GAMMA RAY (GAPI)	150	SONIC INT	140	DELTA TIME (usec/ft) (usec/ft)	40
6	CALIPER (in)	16	TRAVEL TIME	30	SONIC POROSITY (pu)	-10
6	BIT SIZE	16	(msec)	15000	LINE TENSION (lb)	0

 <p><b>PIONEER</b> Pioneer Energy Services</p>	Company	MURFIN DRILLING COMPANY, INC.
	Well	SHARP 'C' #1-6
	Field	UNNAMED
	County	CHEYENNE
	State	KANSAS