



**COMPENSATED
DENSITY/NEUTRON
PE LOG**

Company GRIFFIN MANAGEMENT, LLC.

Well MARY #3

Field

County PRATT

State KANSAS

Location: API #: 15-151-22511-0000

1370' FNL & 1950' FWL

Other Services
DILMEL
SONIC

SEC 33 TWP 29S RGE 15W

Elevation

Permanent Datum GROUND LEVEL Elevation 1968

Log Measured From KELLY BUSHING 11' A.G.L.

K.B. 1979

Drilling Measured From KELLY BUSHING

D.F. 1977

G.L. 1968

Date	2/2/20		
Run Number	ONE		
Depth Driller	4840		
Depth Logger	4850		
Bottom Logged Interval	4826		
Top Log Interval	3500		
Casing Driller	8 5/8" @ 267'		
Casing Logger	265'		
Bit Size	7 7/8		
Type Fluid in Hole	CHEMICAL MUD	CHLORIDES 5000 PPM	
Density / Viscosity	9.4/58		
pH / Fluid Loss	10.5/8.8		
Source of Sample	FLOWLINE		
Rm @ Meas. Temp	.80 @ 70F		
Rmf @ Meas. Temp	.60 @ 70F		
Rmc @ Meas. Temp	.96 @ 70F		
Source of Rmf / Rmc	MEASUREMENT		
Rm @ BHT	.45 @ 124F		
Time Circulation Stopped	2 HOURS		
Time Logger on Bottom	////		
Maximum Recorded Temperature	124F		
Equipment Number	3802		
Location	HAYS, KANSAS		
Recorded By	JASON CAPPELLUCCI		
Witnessed By	ELI FELTS		

<<< Fold Here >>>

All interpretations are opinions based on inferences from electrical or other measurements and we cannot and do not guarantee the accuracy or correctness of any interpretation, and we shall not, except in the case of gross or willful negligence on our part, be liable or responsible for any loss, costs, damages, or expenses incurred or sustained by anyone resulting from any interpretation made by any of our officers, agents or employees. These interpretations are also subject to our general terms and conditions set out in our current Price Schedule.

Comments

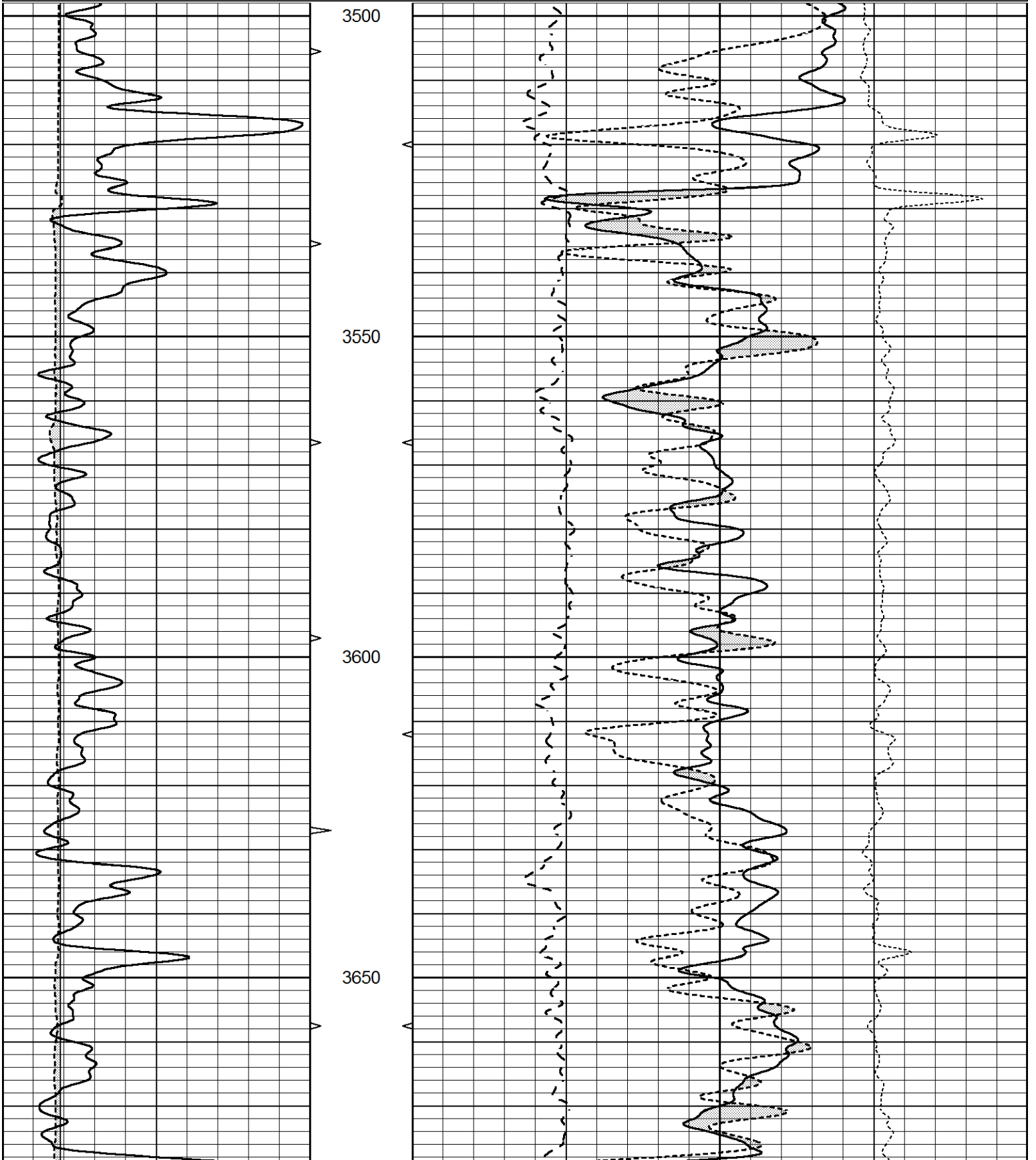
THANK YOU FOR USING ELI WIRELINE SERVICES, HAYS, KS. (785) 628-6395
DIRECTIONS
CROFT, KS. - SOUTH TO 110TH RD. - 1 EAST - 1/4 SOUTH - EAST INTO

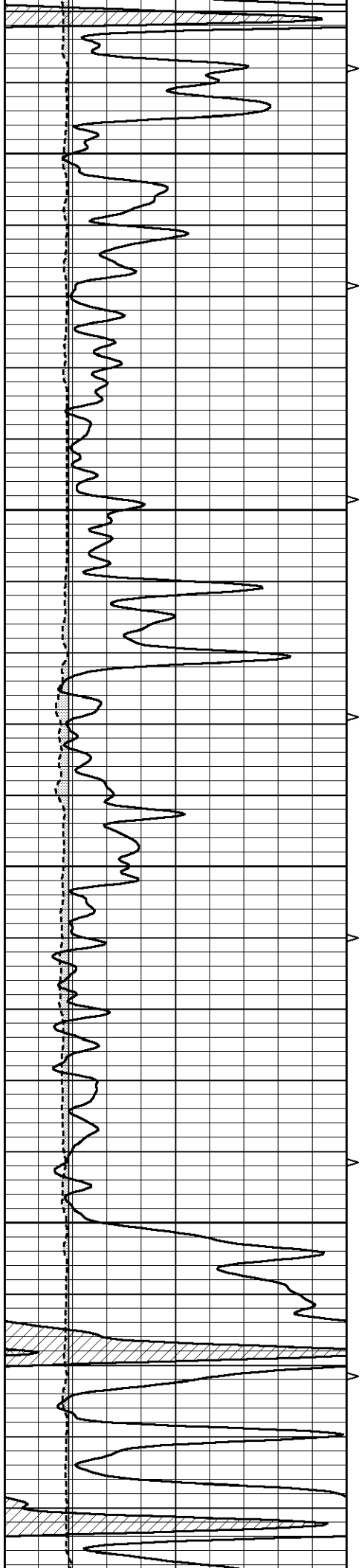


MAIN SECTION

Database File 4726pe.db
 Dataset Pathname pass3.1
 Presentation Format _ldt_neu
 Dataset Creation Sun Feb 02 02:38:53 2020
 Charted by Depth in Feet scaled 1:240

0	GAMMA RAY (GAPI)	150	ABHV	30	COMPENSATED DENSITY (pu)			-10	
6	CALIPER (in)	16	10 (ft3)	0	30	COMPENSATED NEUTRON (pu)			-10
				0	PE	10	-0.25	CORRECTION (g/cc)	0.25
				0	(ft3)	10			



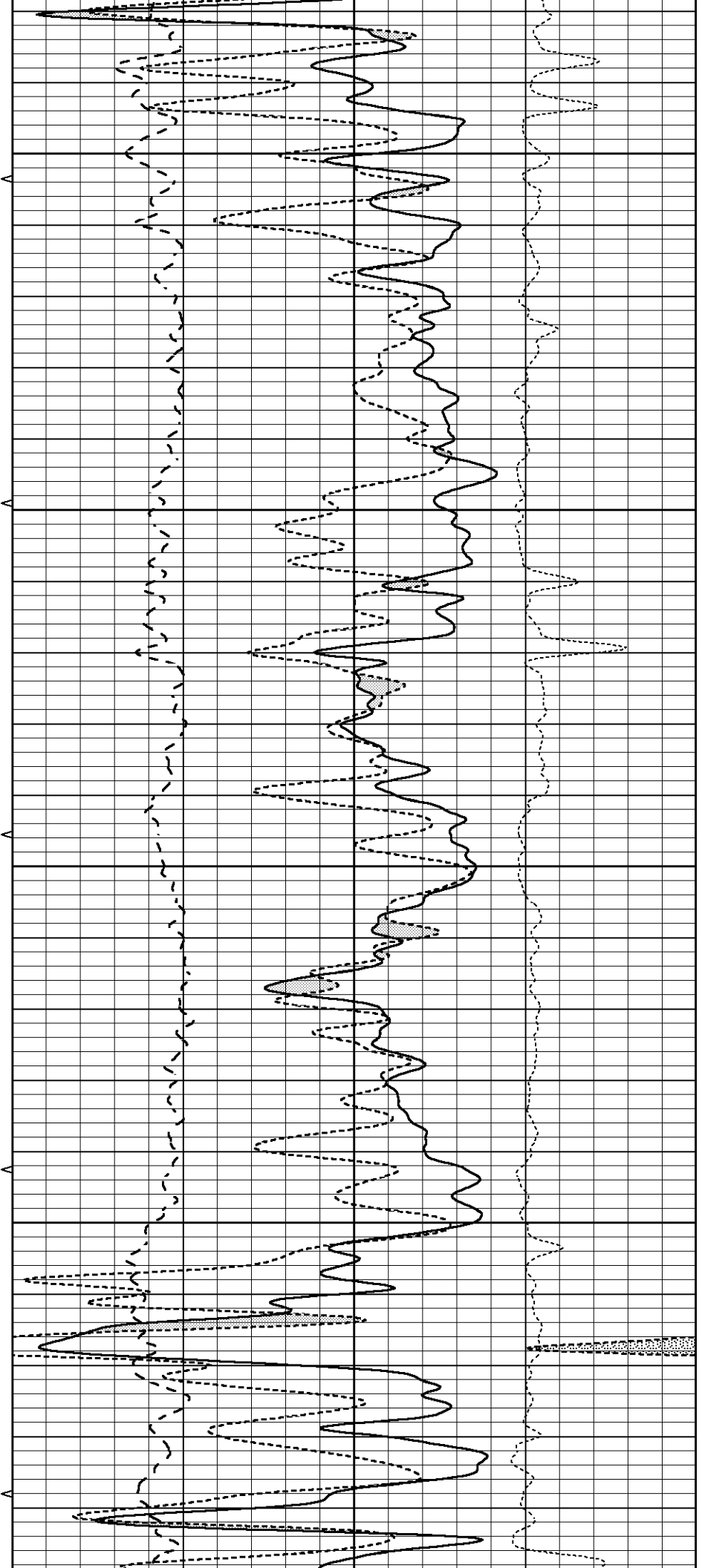


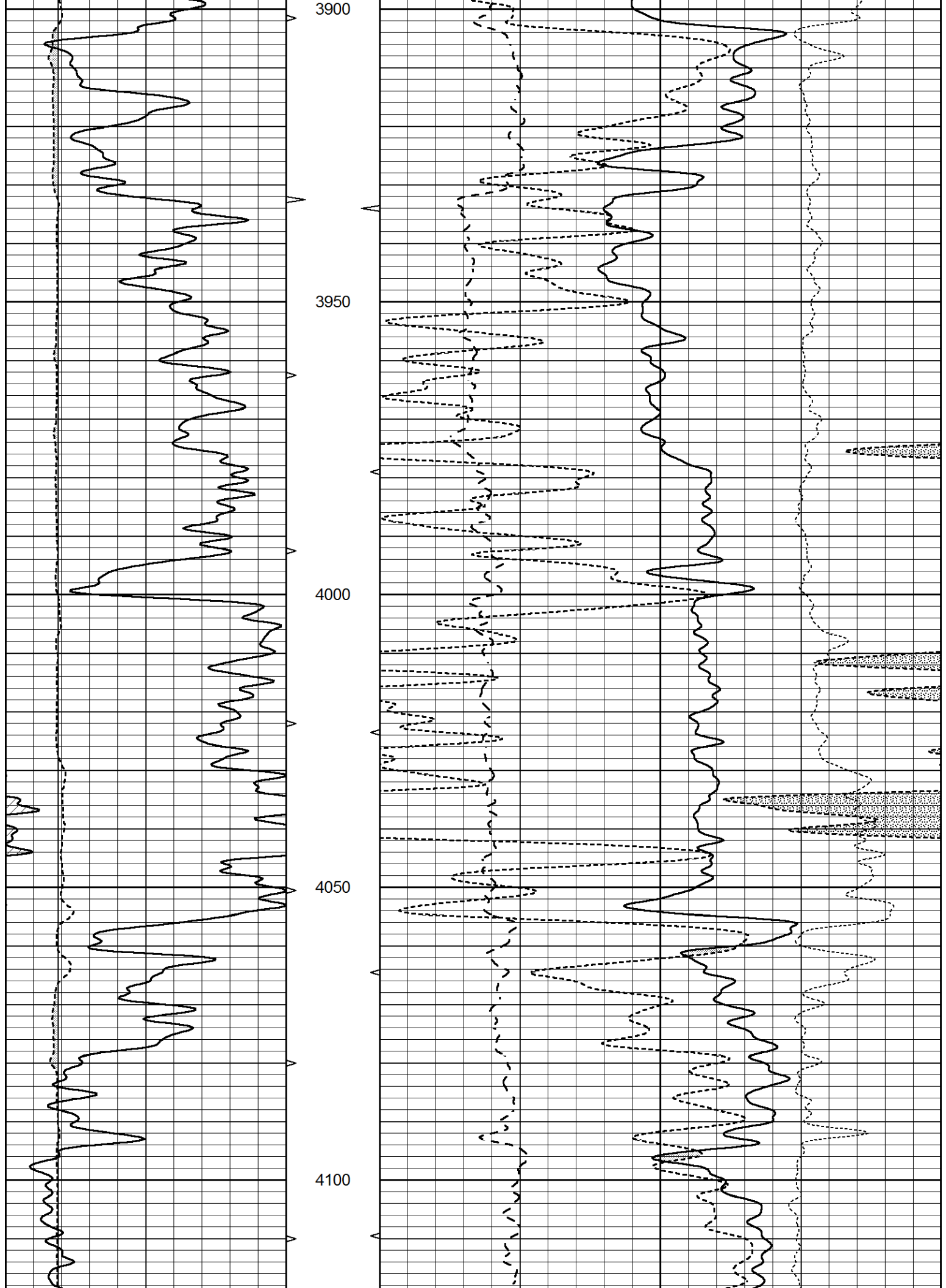
3700

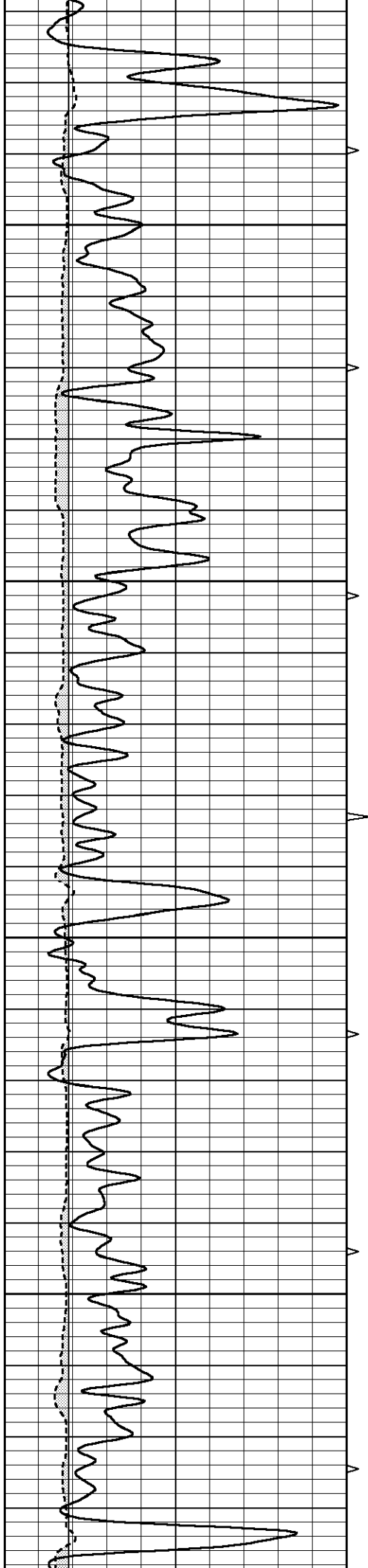
3750

3800

3850





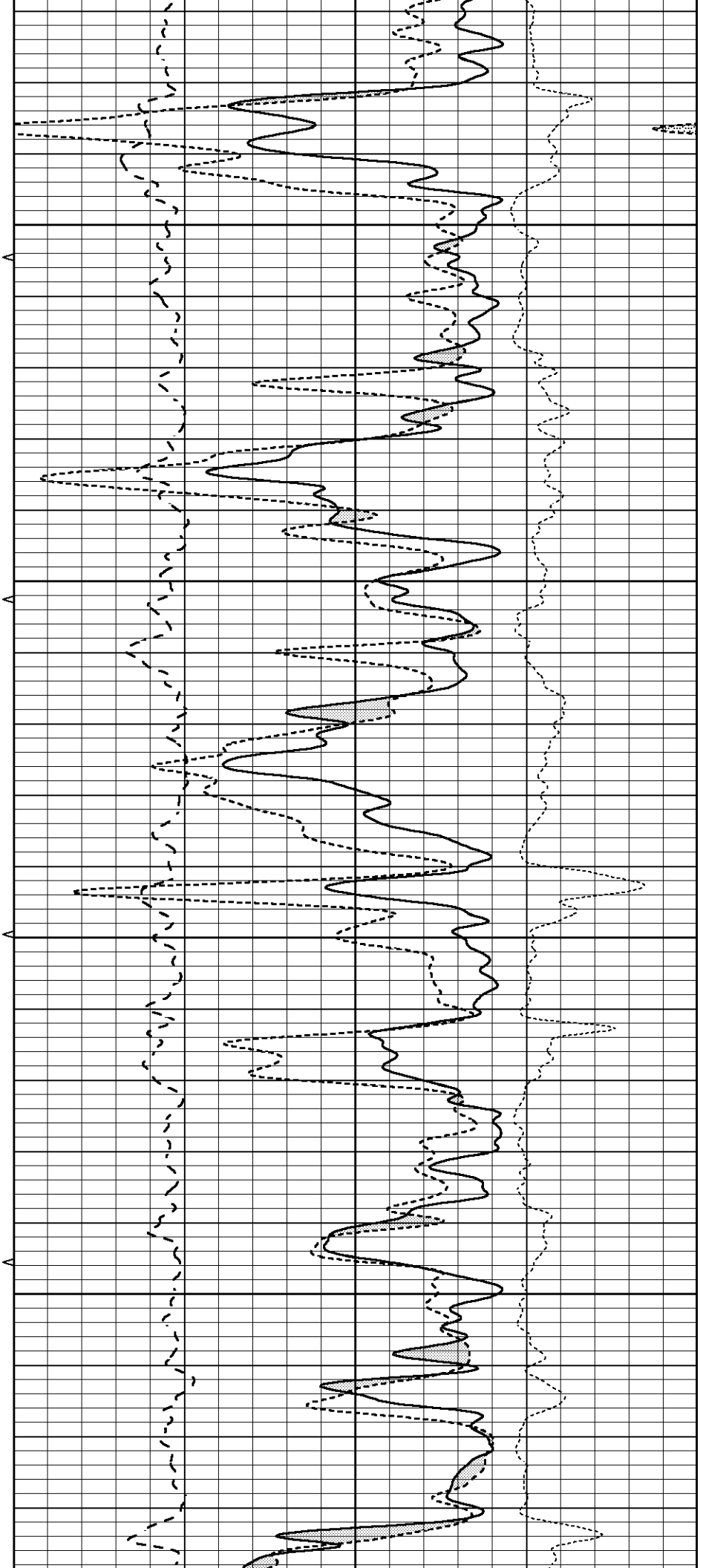


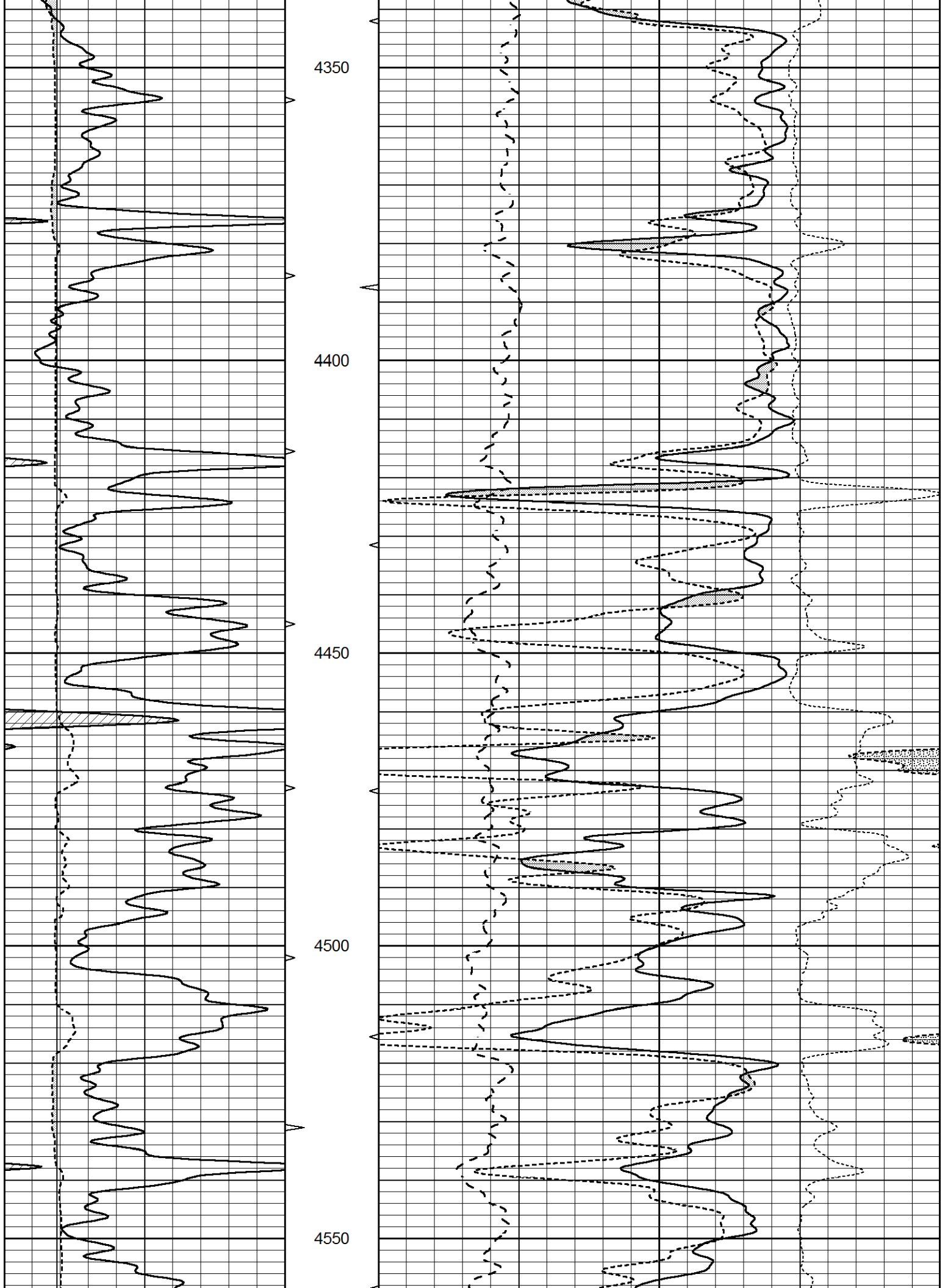
4150

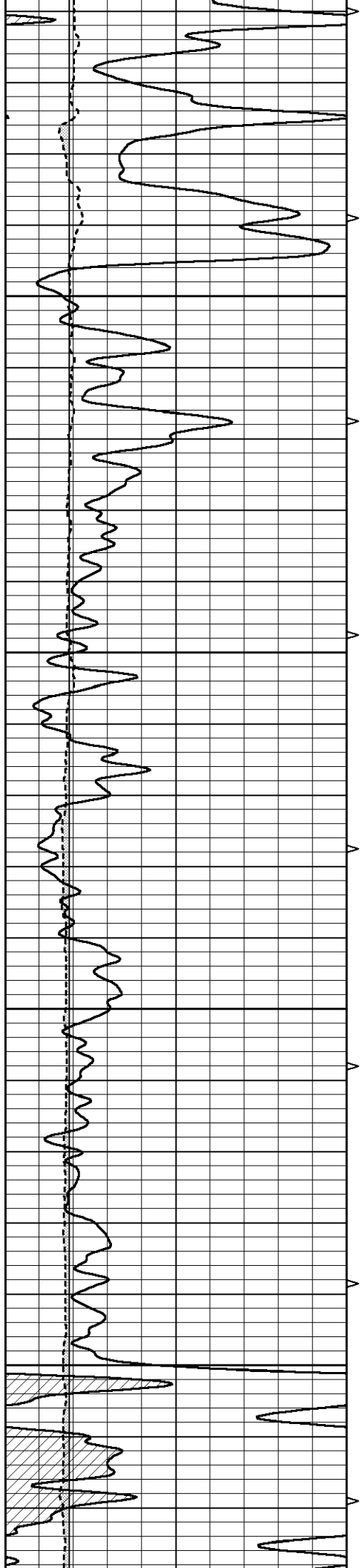
4200

4250

4300





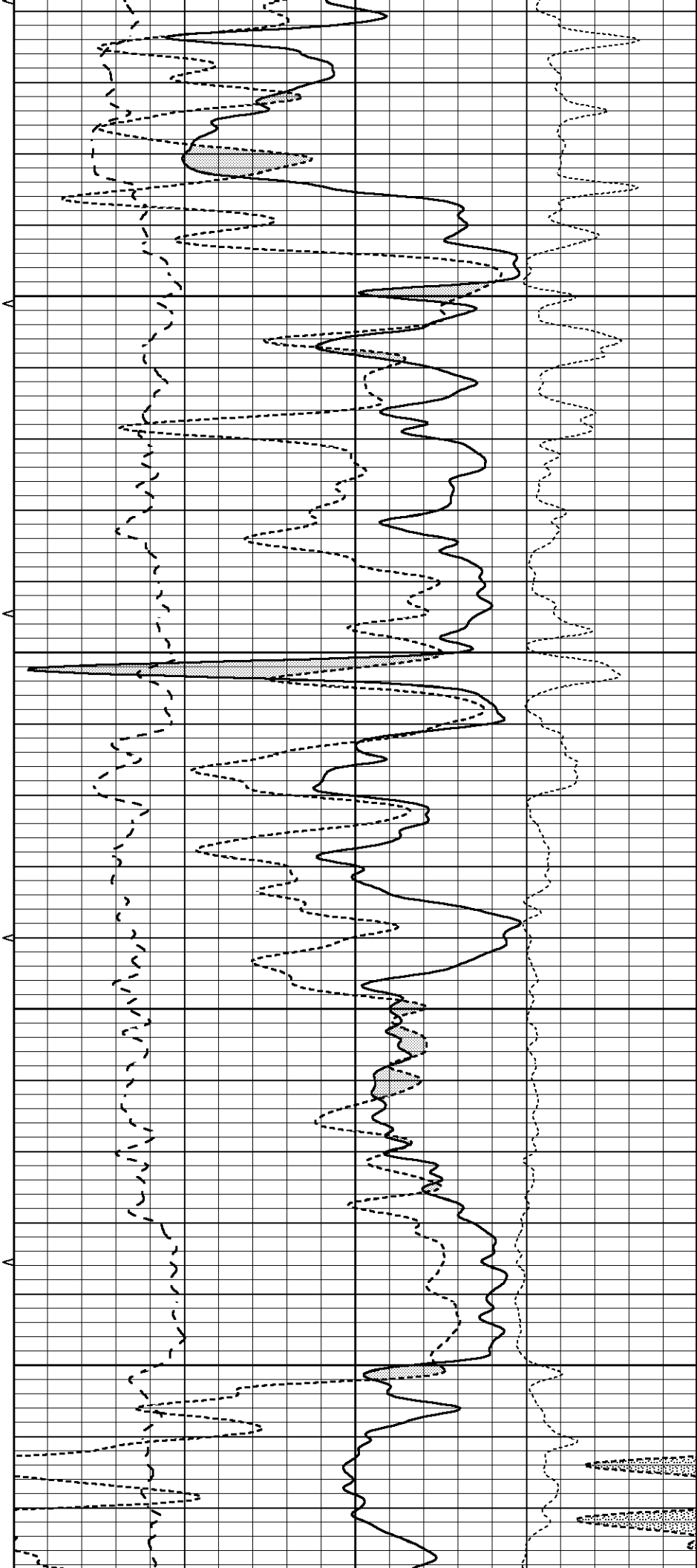


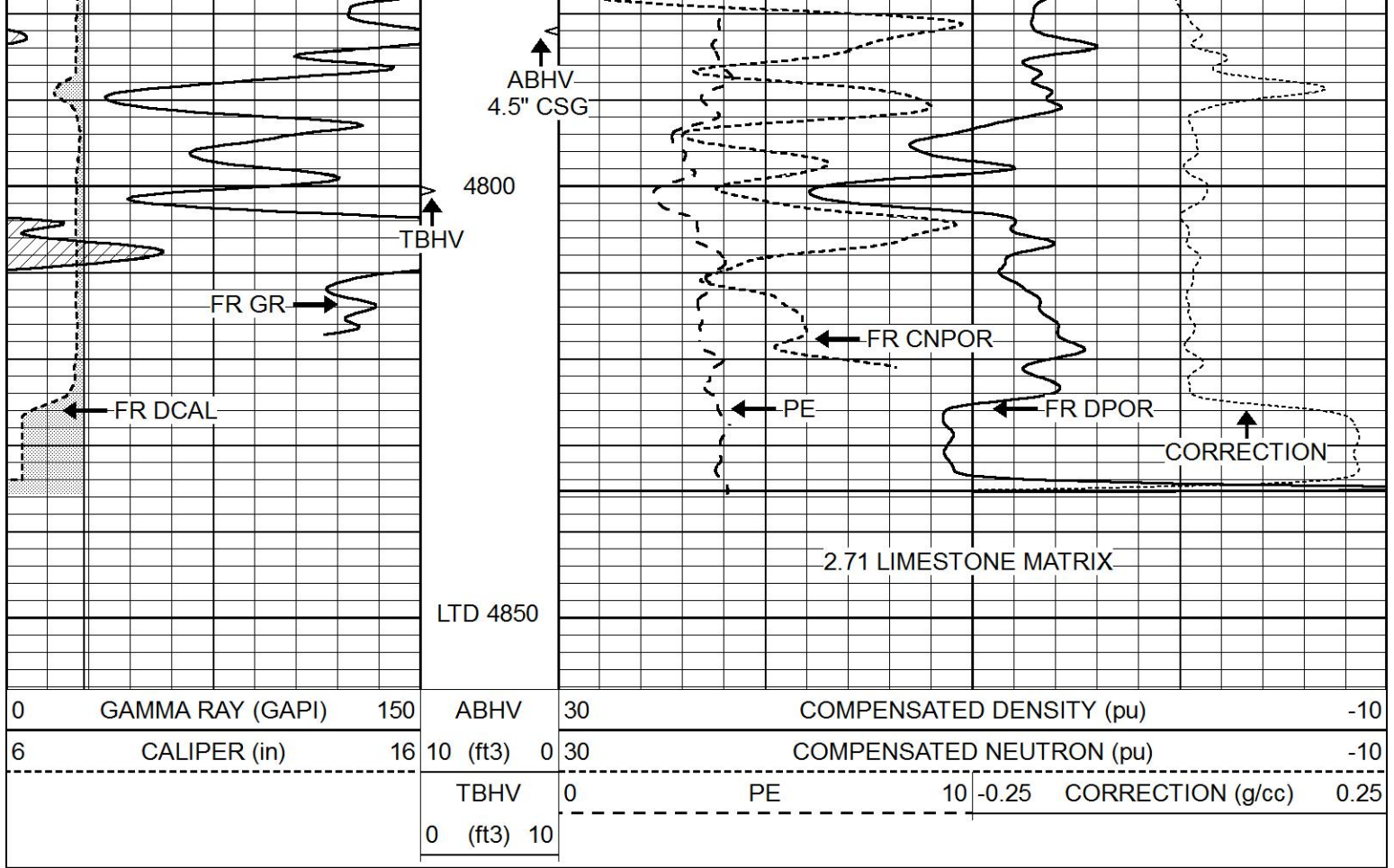
4600

4650

4700

4750

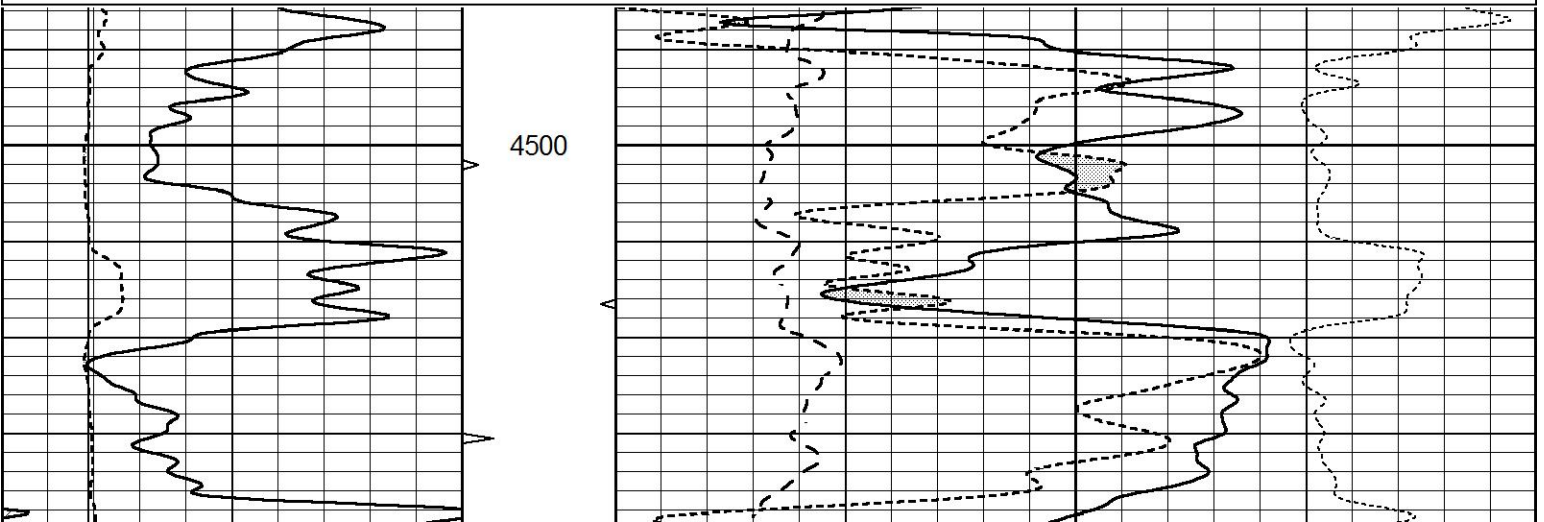


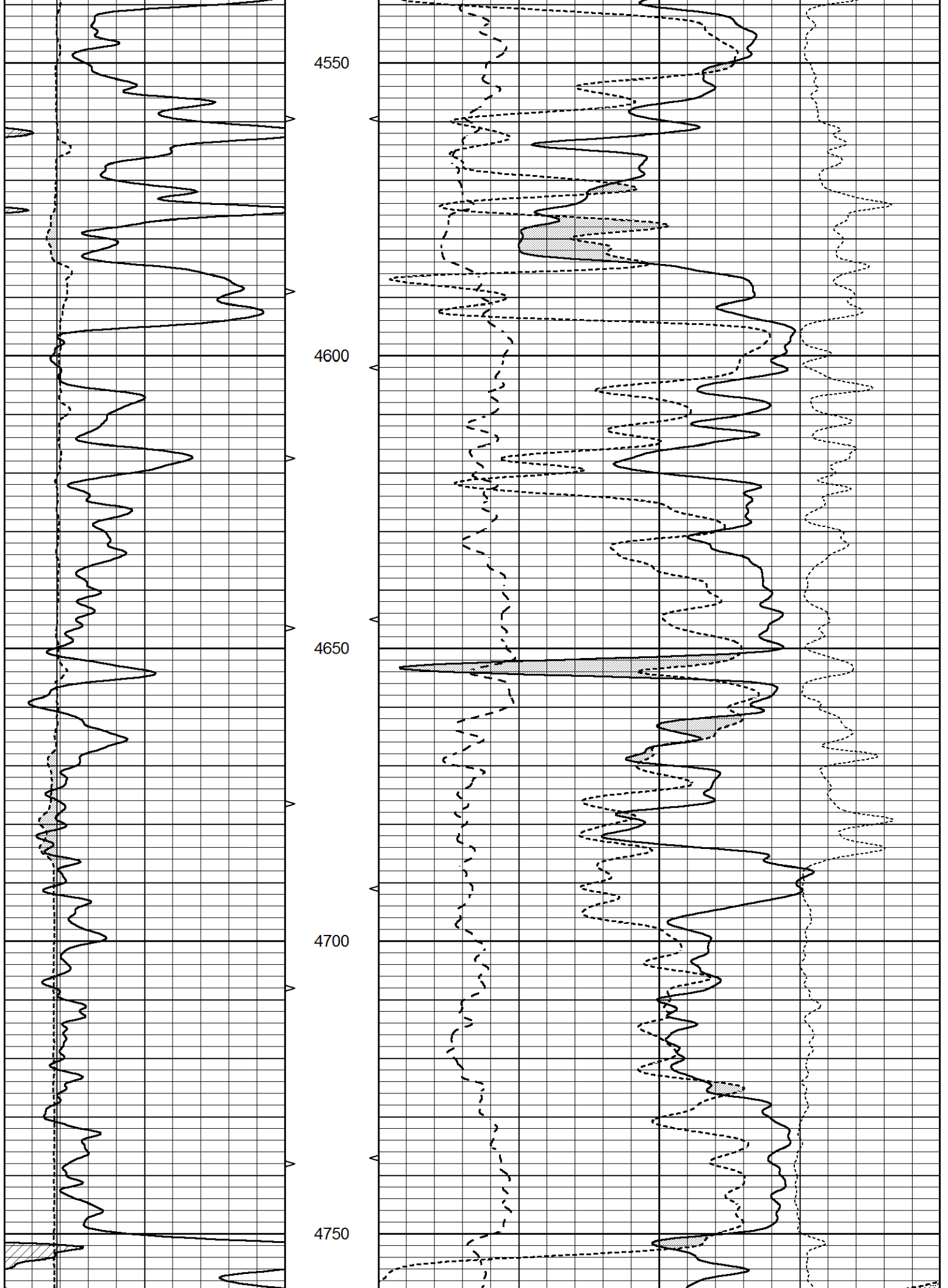


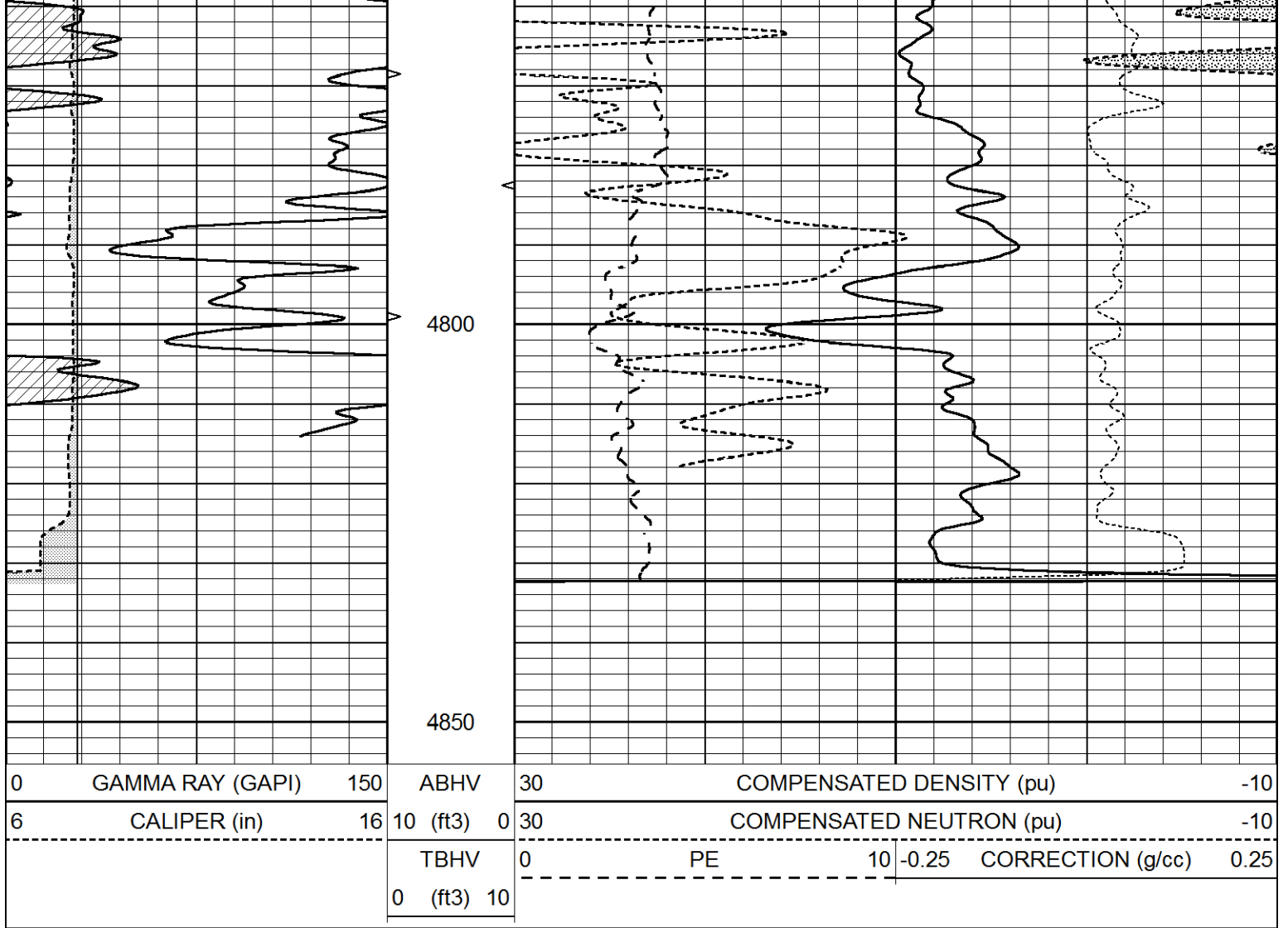
REPEAT SECTION

Database File 4726pe.db
 Dataset Pathname pass2.1
 Presentation Format _ldt_neu
 Dataset Creation Sun Feb 02 02:37:34 2020
 Charted by Depth in Feet scaled 1:240

0	GAMMA RAY (GAPI)	150	ABHV	30	COMPENSATED DENSITY (pu)	-10
6	CALIPER (in)	16	10 (ft3)	0 30	COMPENSATED NEUTRON (pu)	-10
			TBHV	0	PE	10 -0.25
			0 (ft3)	10		CORRECTION (g/cc) 0.25







Calibration Report

Database File 4726pe.db
 Dataset Pathname pass2.1
 Dataset Creation Sun Feb 02 02:37:34 2020

Dual Induction Calibration Report

Serial-Model: FW1410-55-Probe
 Surface Cal Performed: Tue Feb 19 11:44:18 2019
 Downhole Cal Performed: Tue Feb 19 11:44:24 2019
 After Survey Verification Performed: Tue Feb 19 11:44:27 2019

Surface Calibration

Loop:	Readings				References		Results	
	Air	Loop			Air	Loop	m	b
Deep	0.011	0.656	V	1.000	400.000	mmho/m	618.595	-5.524
Medium	-0.000	0.731	V	1.000	464.000	mmho/m	632.856	1.197
Internal:	Zero	Cal		Zero	Cal		m	b
Deep	0.007	0.649	V	0.000	400.000	mmho/m	623.784	-4.595
Medium	0.004	0.743	V	0.000	464.000	mmho/m	627.284	-2.251

Downhole Calibration

Readings		References		Results	
Zero	Cal	Zero	Cal	m'	b'

Deep	-0.824	395.917	mmho/m	-0.976	397.550	mmho/m	1.004	-0.149
Medium	3.565	471.327	mmho/m	3.468	471.590	mmho/m	1.001	-0.099
LL3		7.503	V		1500.000	Ohm-m		
		0.001	V		20.000	Ohm-m		
		-7.481	V		3745.000	mmho-m		

After Survey Verification								
	Readings			Targets			Results	
	Zero	Cal		Zero	Cal		m'	b'
Deep	0.000	0.000	mmho/m	-0.824	395.917	mmho/m	1.000	0.000
Medium	0.000	0.000	mmho/m	3.565	471.327	mmho/m	1.000	0.000
LL3		0.000	Ohm-m		1500.000	Ohm-m		
		0.000	Ohm-m		20.000	Ohm-m		
		0.000	mmho-m		3745.000	mmho-m		

Compensated Neutron Calibration Report

Serial Number:	080621PMC
Tool Model:	NABORS

PRE-SURVEY VERIFICATION				
Detector	Readings	Measured	Target	
Short Space	cps			
Long Space	cps	pu		pu

POST-SURVEY VERIFICATION				
Detector	Readings	Measured	Target	
Short Space	cps			
Long Space	cps	pu		pu

Gamma Ray Calibration Report

Serial Number:	7
Tool Model:	Probe1
Performed:	Tue Dec 10 10:02:55 2019
Calibrator Value:	1.0 GAPI
Background Reading:	0.0 cps
Calibrator Reading:	1.0 cps
Sensitivity:	0.5400 GAPI/cps