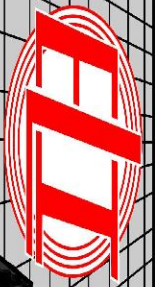


MICRO
LOG



Company GRIFFIN MANAGEMENT, LLC.

Well MARY #3

Field

County PRATT

State KANSAS

Location: API #: 15-151-22511-0000

1370' FNL & 1950' FWL

Other Services
CDL/CNL/PE
DIL/SON

Permanent Datum SEC 33 TWP 29S RGE 15W

GROUND LEVEL Elevation 1968

Elevation

Log Measured From KELLY BUSHING 11' A.G.L

K.B. 1979

Drilling Measured From KELLY BUSHING

D.F. 1977

G.L. 1968

Date 2/2/20

Run Number TWO

Depth Driller 4840

Depth Logger 4850

Bottom Logged Interval 4832

Top Log Interval 3500

Casing Driller 8 5/8" @ 267'

Casing Logger 265'

Bit Size 7 7/8

Type Fluid in Hole CHEMICAL MUD CHLORIDES 5000 PPM

Density / Viscosity 9.4/58

pH / Fluid Loss 10.5/8.8

Source of Sample FLOWLINE

Rm @ Meas. Temp .80 @ 70F

Rmf @ Meas. Temp .60 @ 70F

Rmc @ Meas. Temp .96 @ 70F

Source of Rmf / Rmc MEASUREMENT

Rm @ BHT .45 @ 124F

Time Circulation Stopped 2 HOURS

Time Logger on Bottom ////

Maximum Recorded Temperature 124F

Equipment Number 3802

Location HAYS, KANSAS

Recorded By JASON CAPPELLUCCI

Witnessed By ELI FELTS

<<< Fold Here >>>

All interpretations are opinions based on inferences from electrical or other measurements and we cannot and do not guarantee the accuracy or correctness of any interpretation, and we shall not, except in the case of gross or willful negligence on our part, be liable or responsible for any loss, costs, damages, or expenses incurred or sustained by anyone resulting from any interpretation made by any of our officers, agents or employees. These interpretations are also subject to our general terms and conditions set out in our current Price Schedule.

Comments

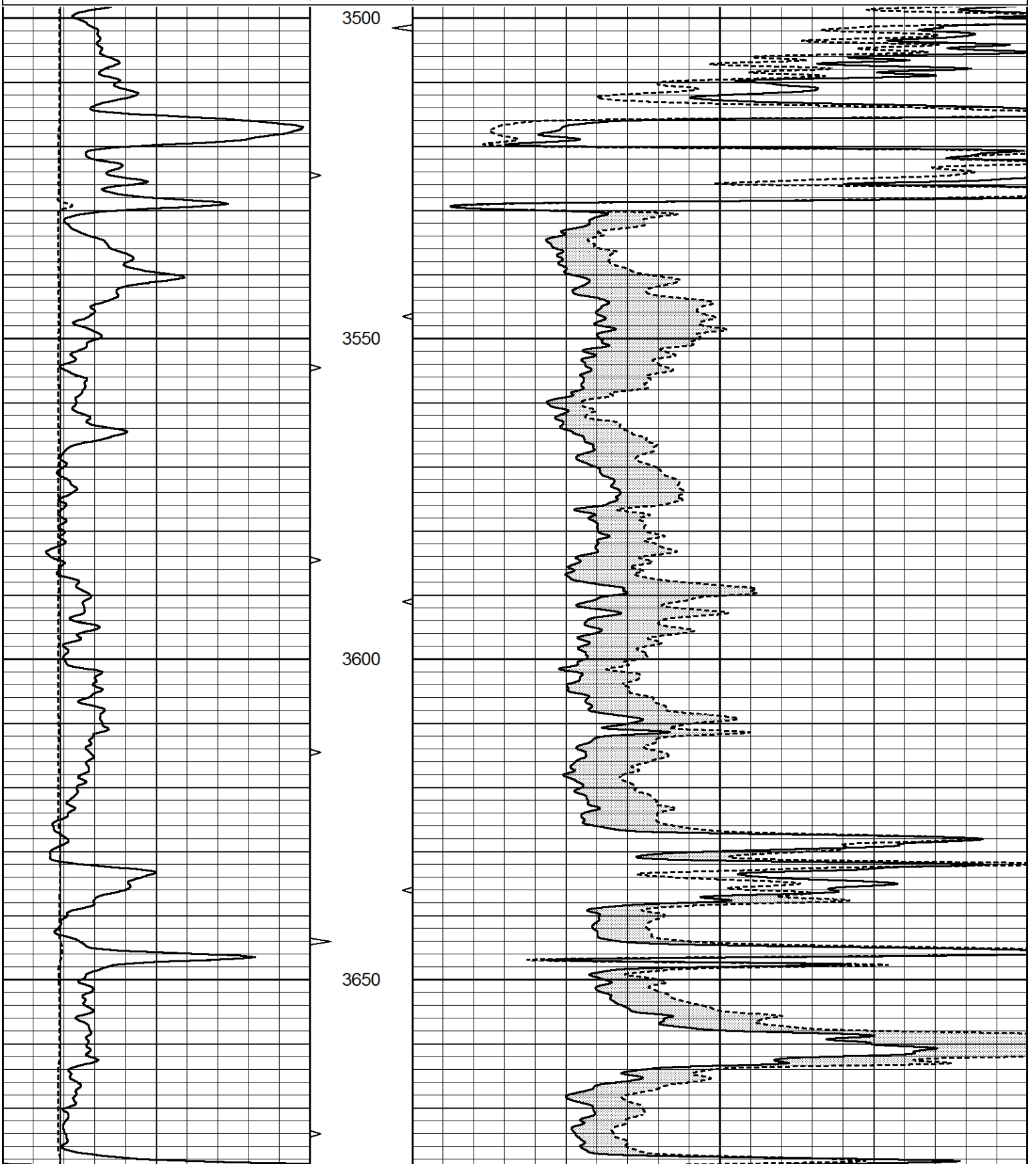
THANK YOU FOR USING ELI WIRELINE SERVICES, HAYS, KS. (785) 628-6395
DIRECTIONS
CROFT, KS. - SOUTH TO 110TH RD. - 1 EAST - 1/4 SOUTH - EAST INTO

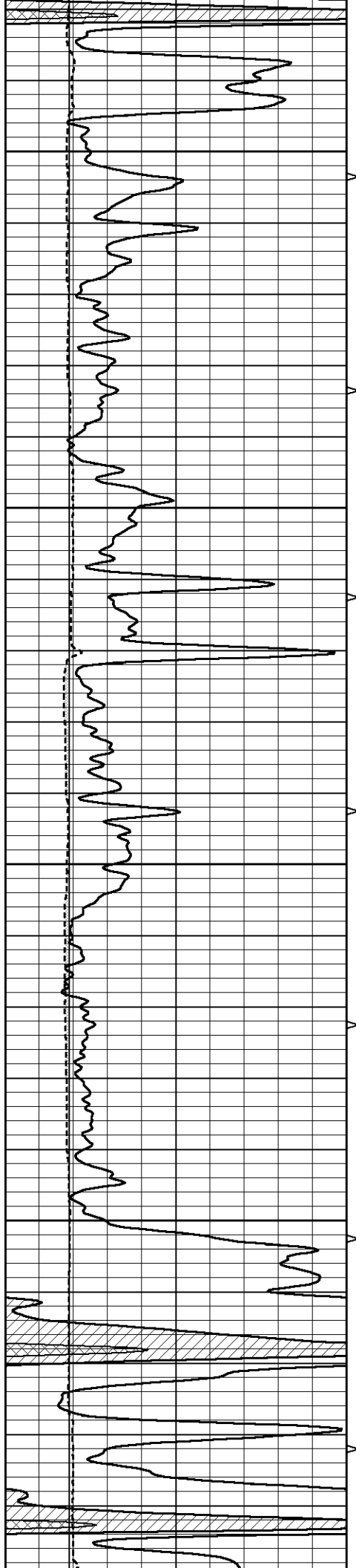
MAIN SECTION



Database File 4726pe.db
 Dataset Pathname pass6.1
 Presentation Format _micro
 Dataset Creation Sun Feb 02 04:47:35 2020
 Charted by Depth in Feet scaled 1:240

0	GAMMA RAY (GAPI)	150	ABHV	0	MEL1.5 (Ohm-m)	40
6	CALIPER (in)	16	10 (ft3)	0	MEL2.0 (Ohm-m)	40
			TBHV			
			0 (ft3)	10		



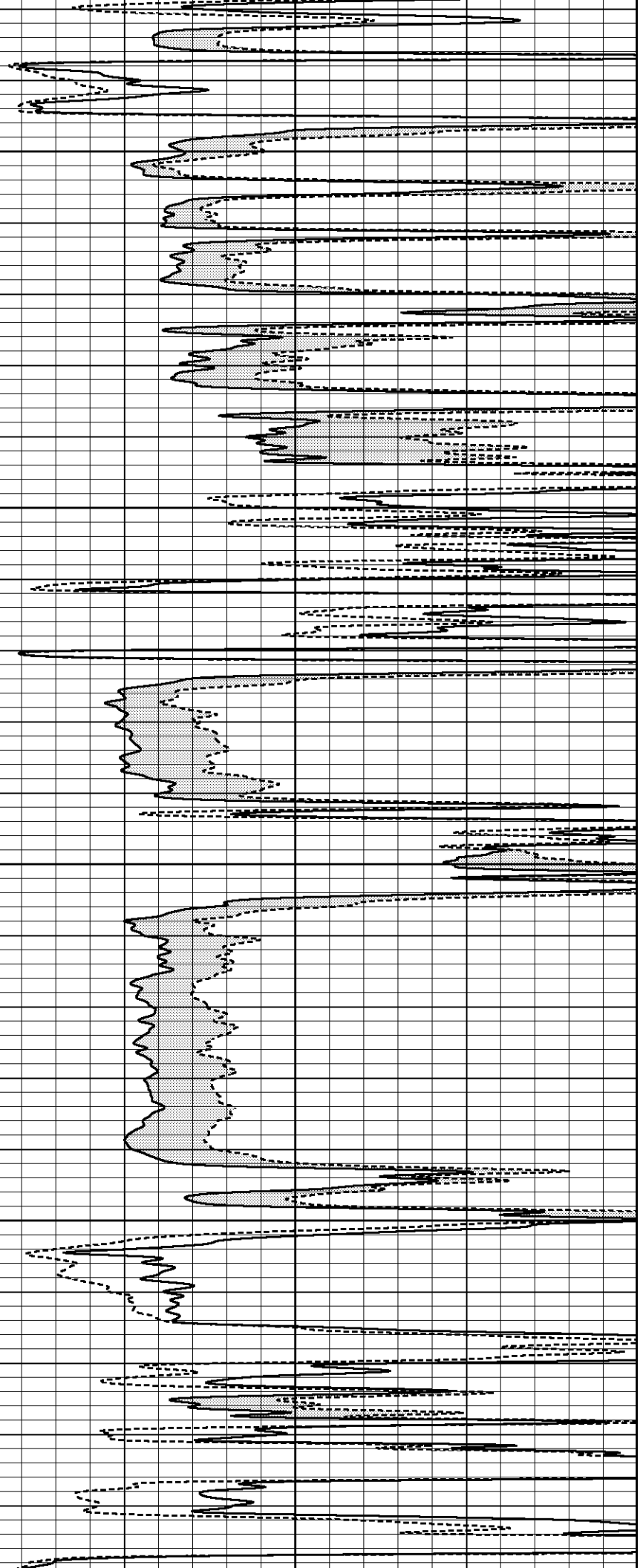


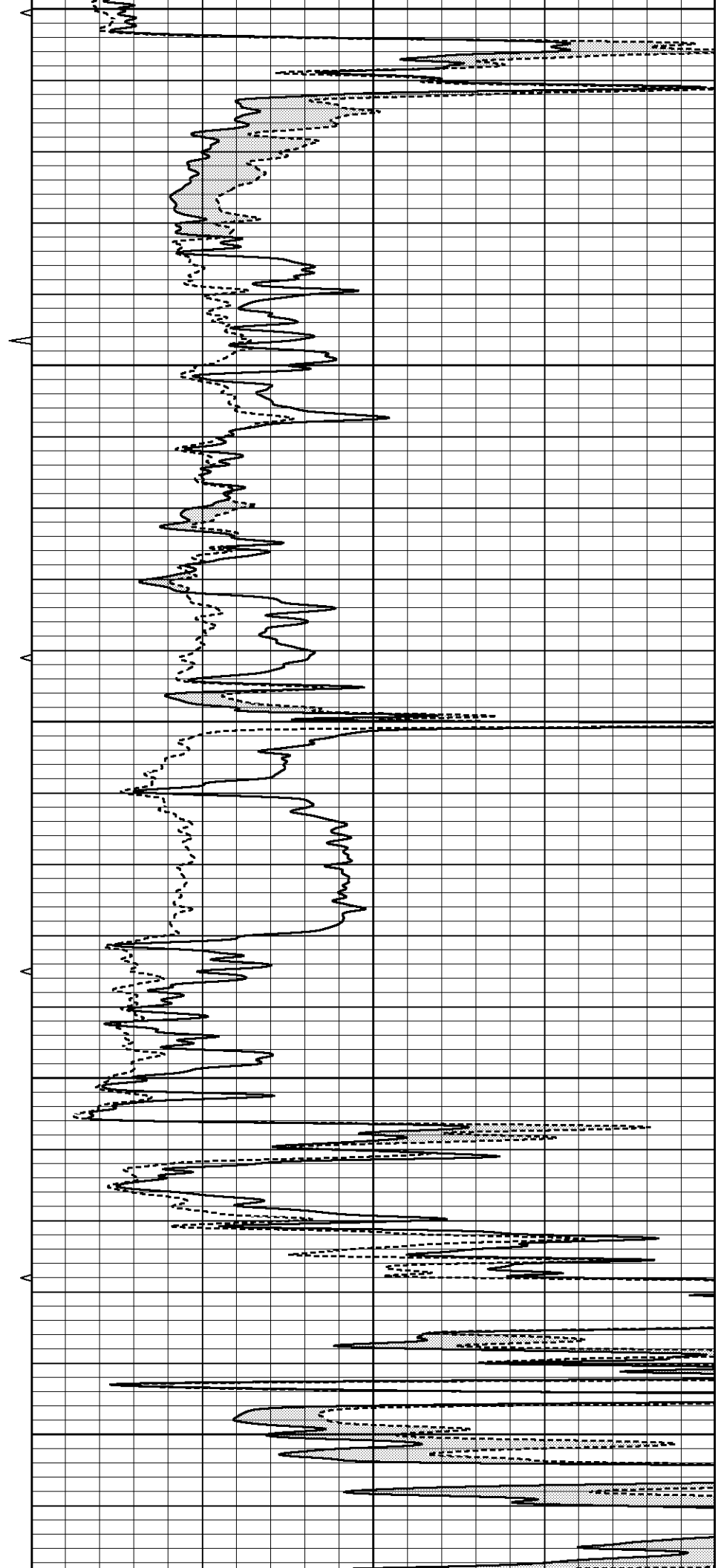
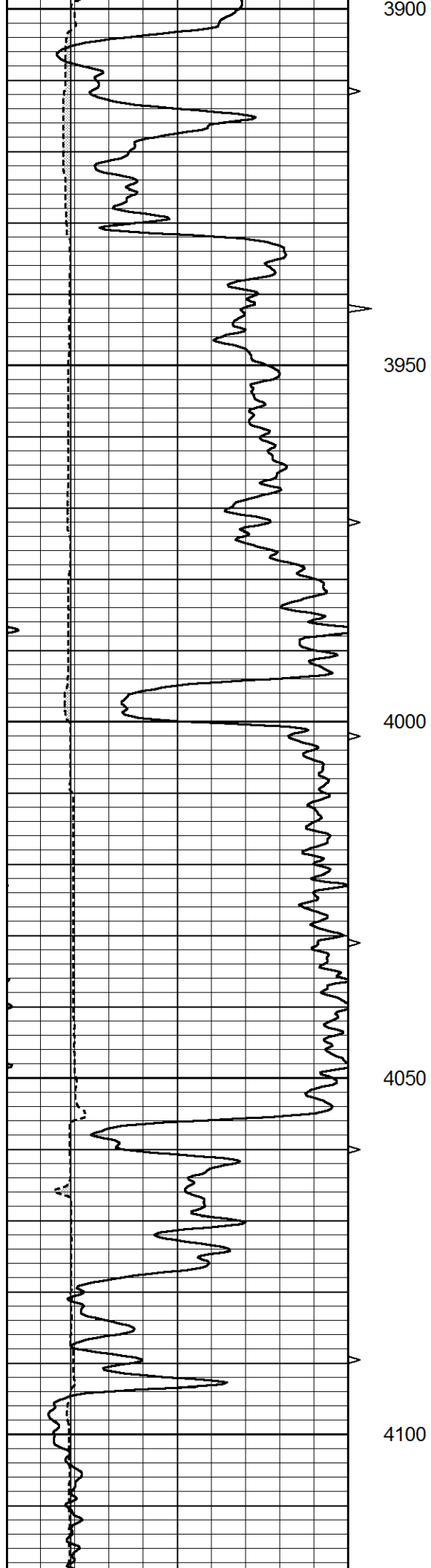
3700

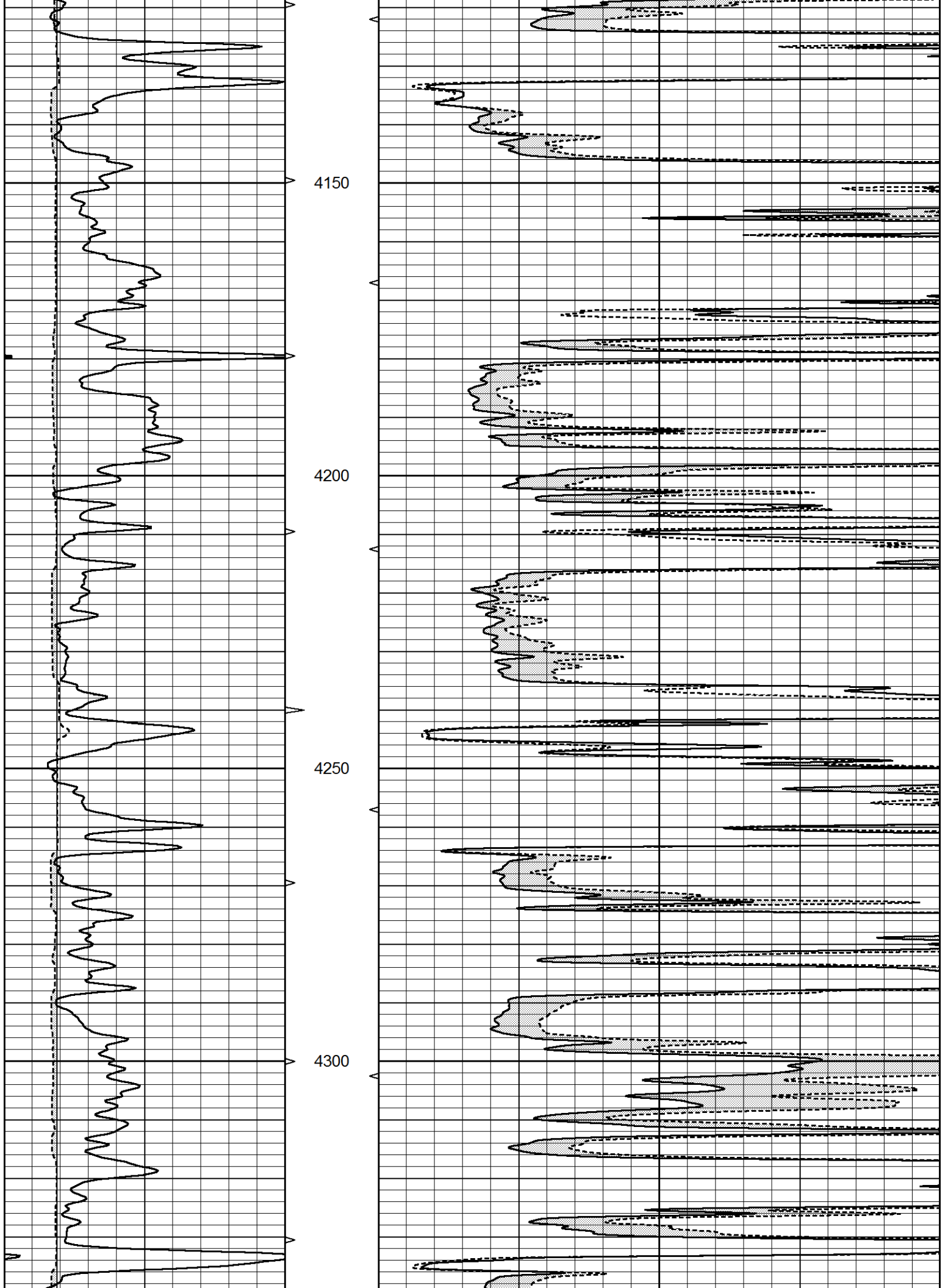
3750

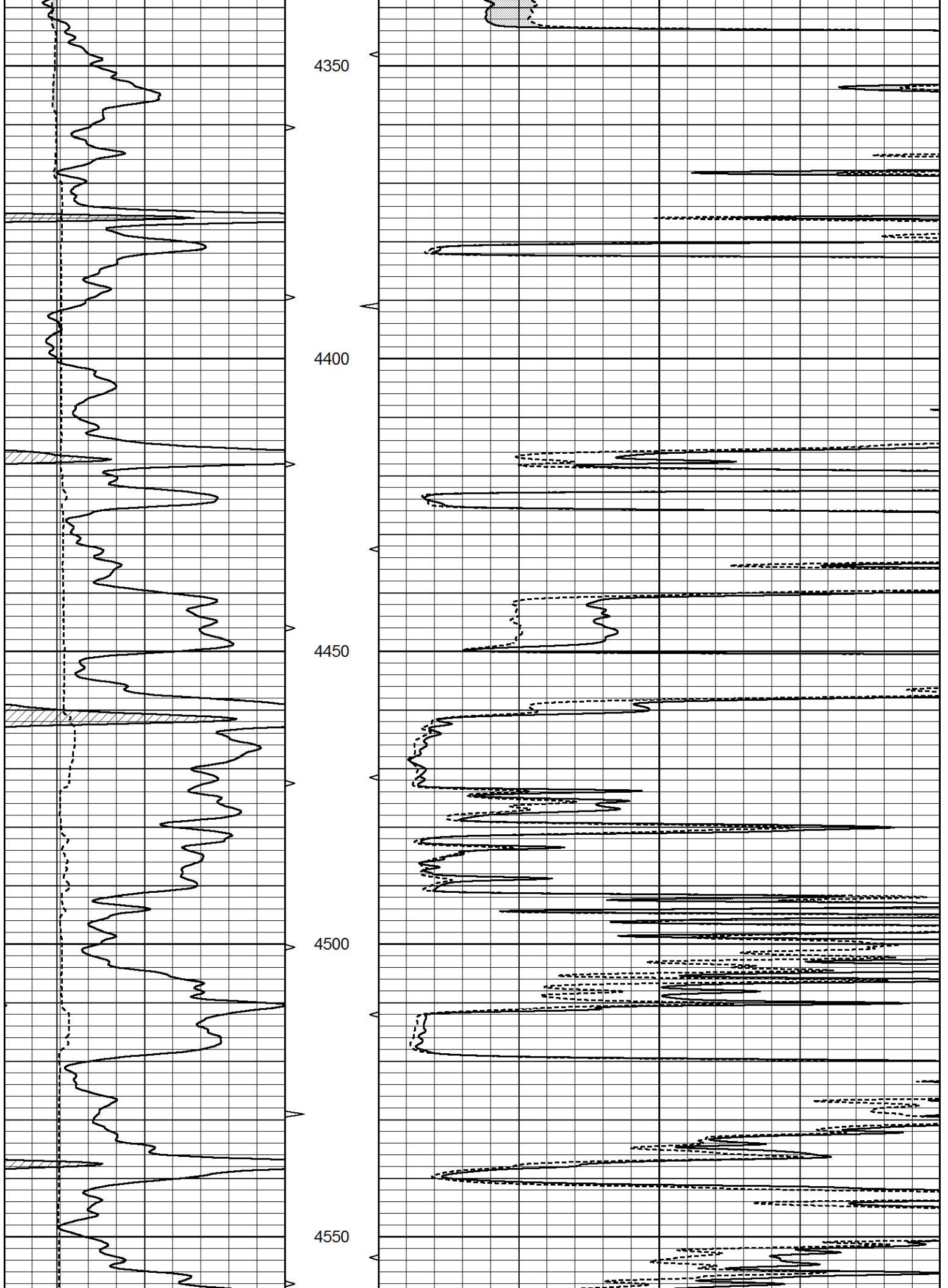
3800

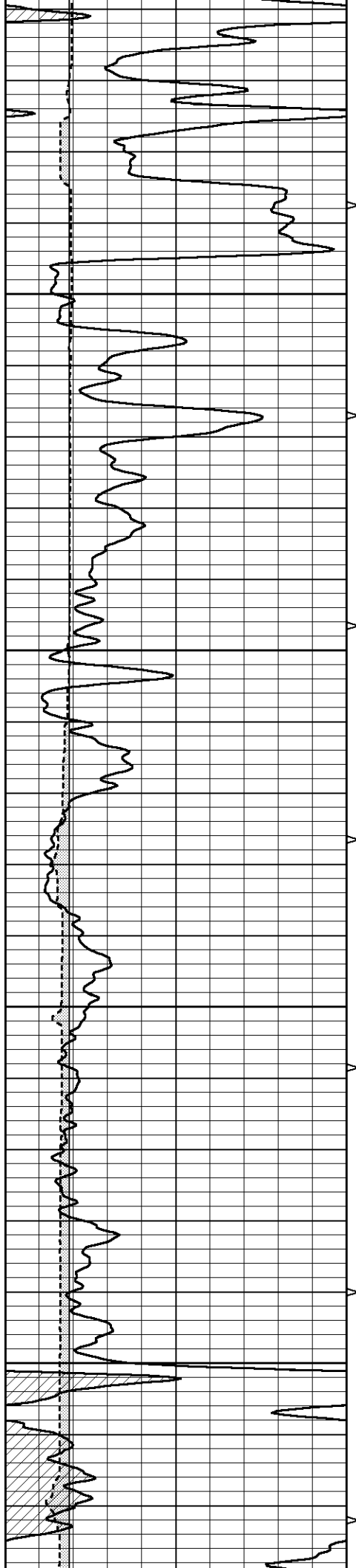
3850









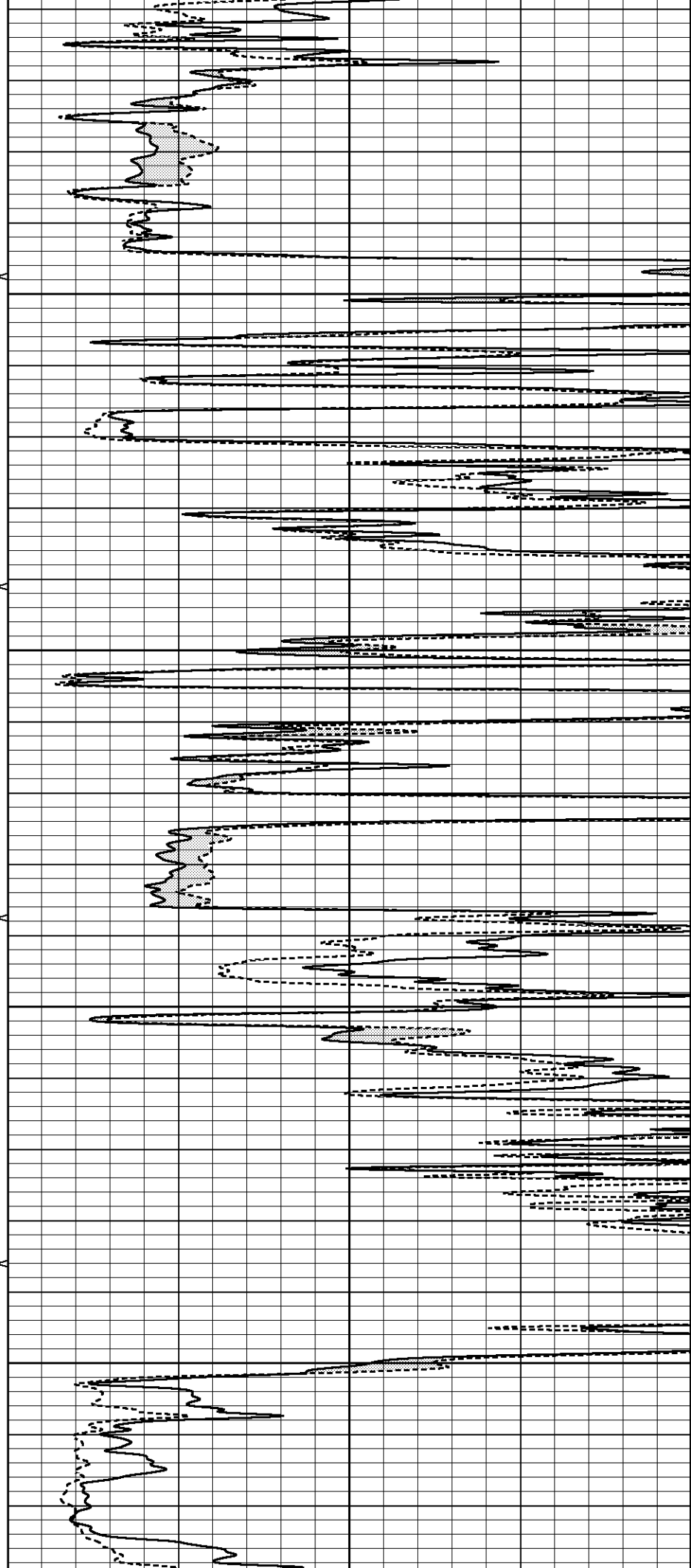


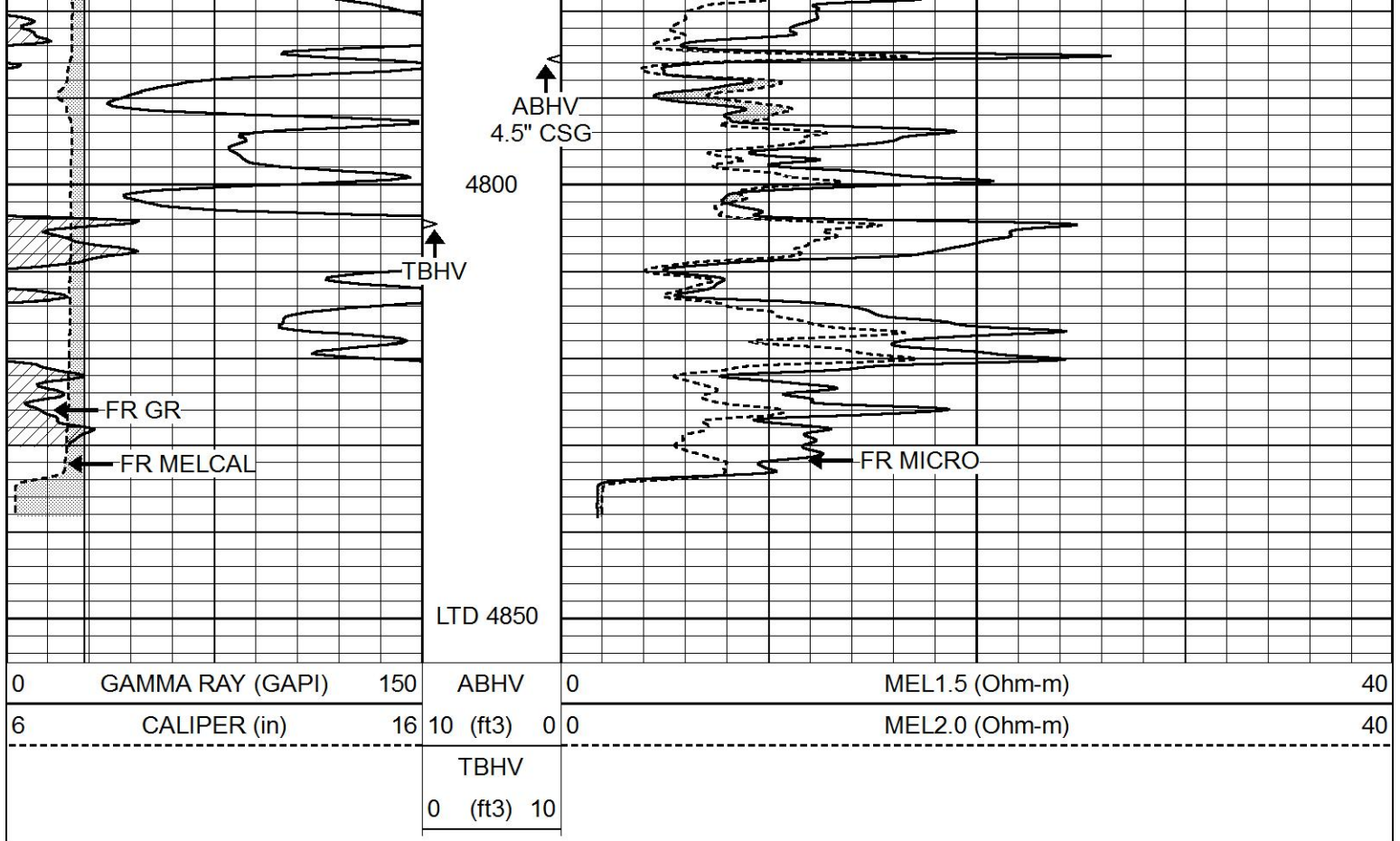
4600

4650

4700

4750

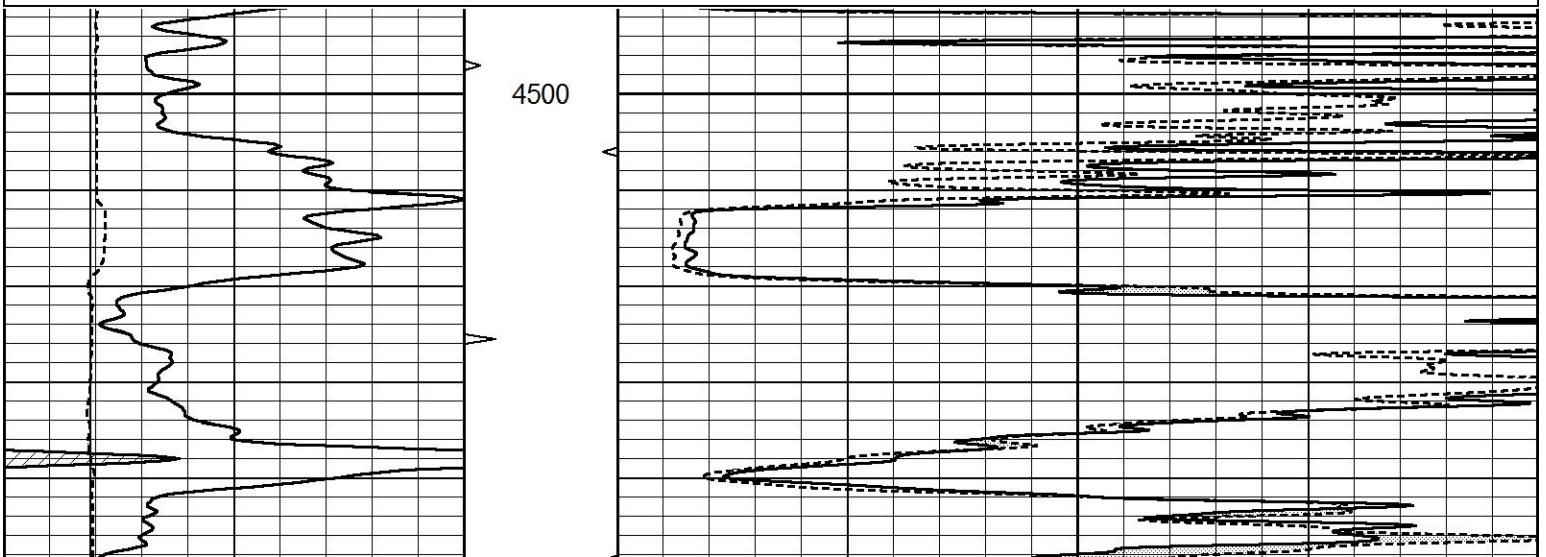


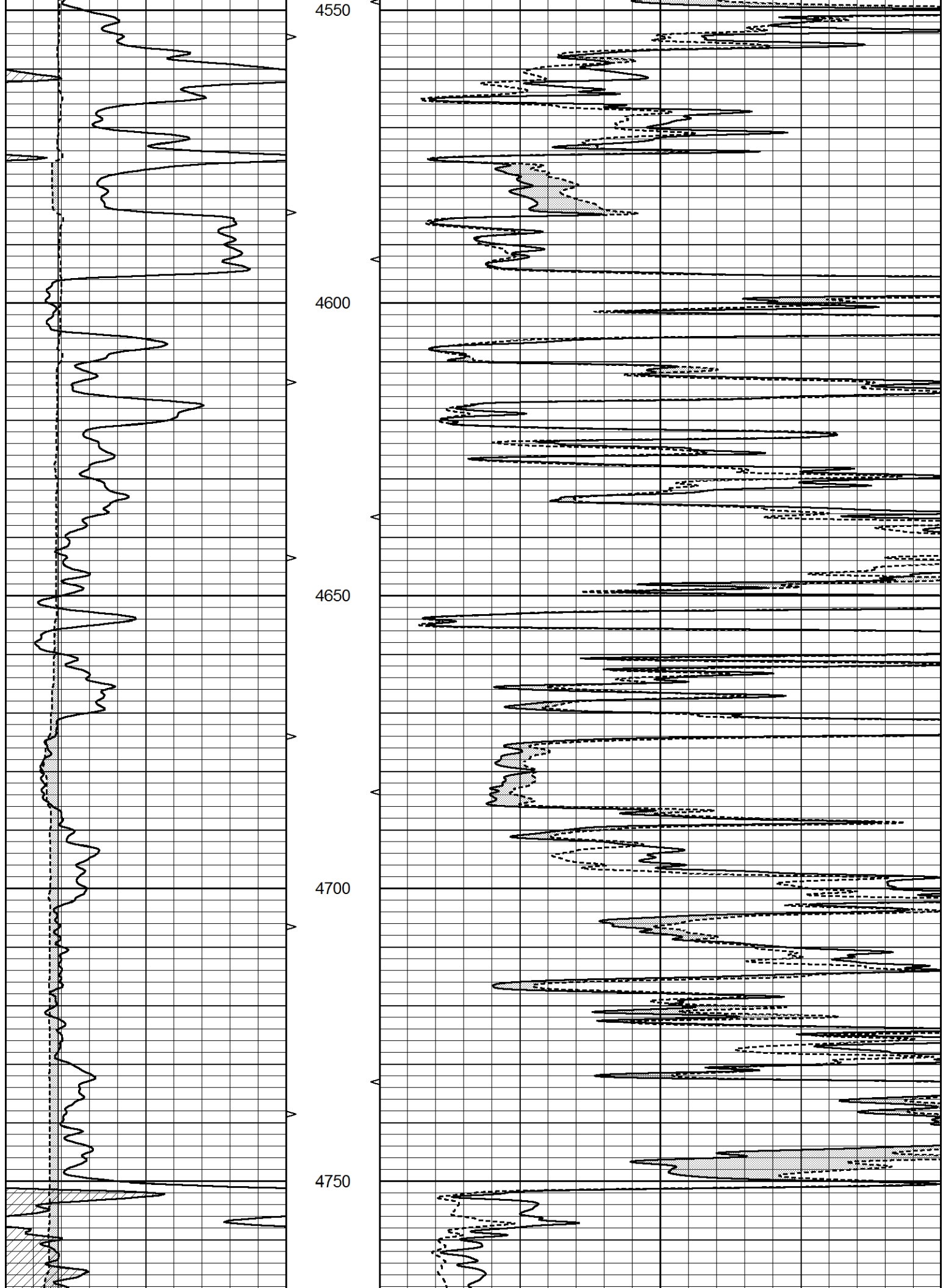


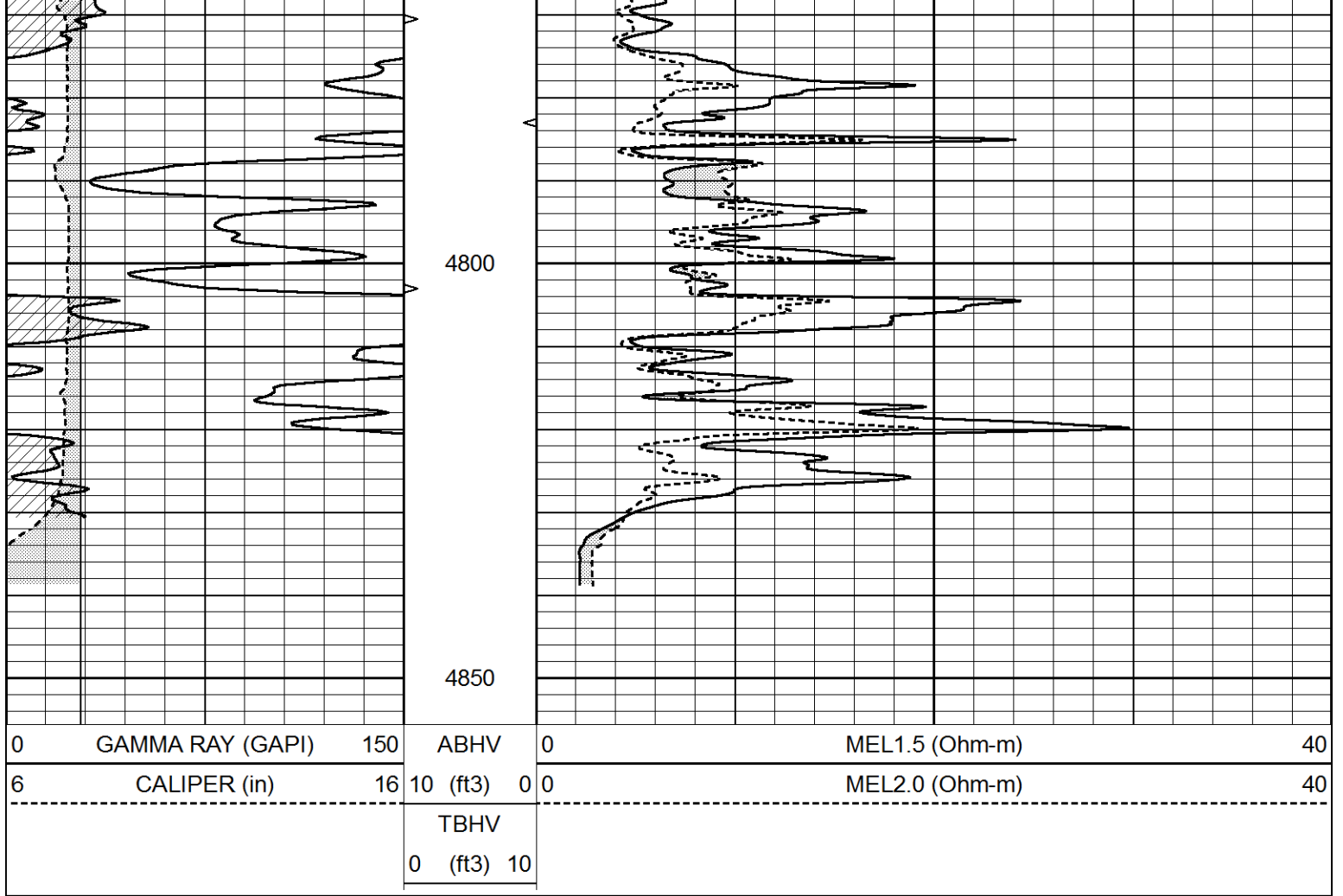
REPEAT SECTION

Database File 4726pe.db
 Dataset Pathname pass5.1
 Presentation Format _micro
 Dataset Creation Sun Feb 02 04:32:31 2020
 Charted by Depth in Feet scaled 1:240

0	GAMMA RAY (GAPI)	150	ABHV	0	MEL1.5 (Ohm-m)	40
6	CALIPER (in)	16	10 (ft3)	0	MEL2.0 (Ohm-m)	40
			TBHV			
			0 (ft3)	10		







Calibration Report

Database File 4726pe.db
 Dataset Pathname pass5.1
 Dataset Creation Sun Feb 02 04:32:31 2020

MICRO_USR Calibration Report

Serial Number: 070910
 Tool Model: Probel
 Performed: Tue Jan 28 10:39:34 2020

Caliper Calibration: Gain=7.282 Offset=3.087
 References Low Cal High Cal
 8.000 14.000
 Readings 0.647 1.471

1.5" Calibration: Gain=50.000 Offset=-0.067
 References Low Cal High Cal
 0.000 20.000
 Readings 0.004 1.335

2" Calibration: Gain=60.000 Offset=-0.779
 References Low Cal High Cal
 0.000 20.000
 Readings 0.004 1.029

Microlog Calibration Report

Serial-Model: 070910-Probel
 Performed: (Not Performed)

Performed.

(Not Performed)

	Readings			References			Results	
	Zero	Cal		Zero	Cal		m	b
Normal	0.0000	1.0000	V	0.0000	1.0000	Ohm-m	1.0000	0.0000
Inverse	0.0000	1.0000	V	0.0000	1.0000	Ohm-m	1.0000	0.0000
Caliper	0.0000	1.0000	V	0.0000	1.0000	in	1.0000	0.0000

Gamma Ray Calibration Report

Serial Number:	070558
Tool Model:	Probe1
Performed:	Mon Jan 21 19:38:56 2019
Calibrator Value:	1.0 GAPI
Background Reading:	0.0 cps
Calibrator Reading:	1.0 cps
Sensitivity:	0.2900 GAPI/cps