

SONIC LOG



Company GRIFFIN MANAGEMENT, LLC.

Well MARY #3

Field

County PRATT

State KANSAS

Location: API #: 15-151-22511-0000

1370' FNL & 1950' FWL

SEC 33 TWP 29S RGE 15W

Permanent Datum GROUND LEVEL Elevation 1968

Log Measured From KELLY BUSHING 11' A.G.L

Drilling Measured From KELLY BUSHING

Other Services
CDL/CNL/PE
DIL/MEL
Elevation
K.B. 1979
D.F. 1977
G.L. 1968

Date	2/2/20		
Run Number	TWO		
Depth Driller	4840		
Depth Logger	4850		
Bottom Logged Interval	4840		
Top Log Interval	250		
Casing Driller	8 5/8" @ 267'		
Casing Logger	265'		
Bit Size	7 7/8		
Type Fluid in Hole	CHEMICAL MUD	CHLORIDES 5000 PPM	
Density / Viscosity	9.4/58		
pH / Fluid Loss	10.5/8.8		
Source of Sample	FLOWLINE		
Rm @ Meas. Temp	.80 @ 70F		
Rmf @ Meas. Temp	.60 @ 70F		
Rmc @ Meas. Temp	.96 @ 70F		
Source of Rmf / Rmc	MEASUREMENT		
Rm @ BHT	.45 @ 124F		
Time Circulation Stopped	2 HOURS		
Time Logger on Bottom	////		
Maximum Recorded Temperature	124F		
Equipment Number	3802		
Location	HAYS, KANSAS		
Recorded By	JASON CAPPELLUCCI		
Witnessed By	ELI FELTS		

<<< Fold Here >>>

All interpretations are opinions based on inferences from electrical or other measurements and we cannot and do not guarantee the accuracy or correctness of any interpretation, and we shall not, except in the case of gross or willful negligence on our part, be liable or responsible for any loss, costs, damages, or expenses incurred or sustained by anyone resulting from any interpretation made by any of our officers, agents or employees. These interpretations are also subject to our general terms and conditions set out in our current Price Schedule.

Comments

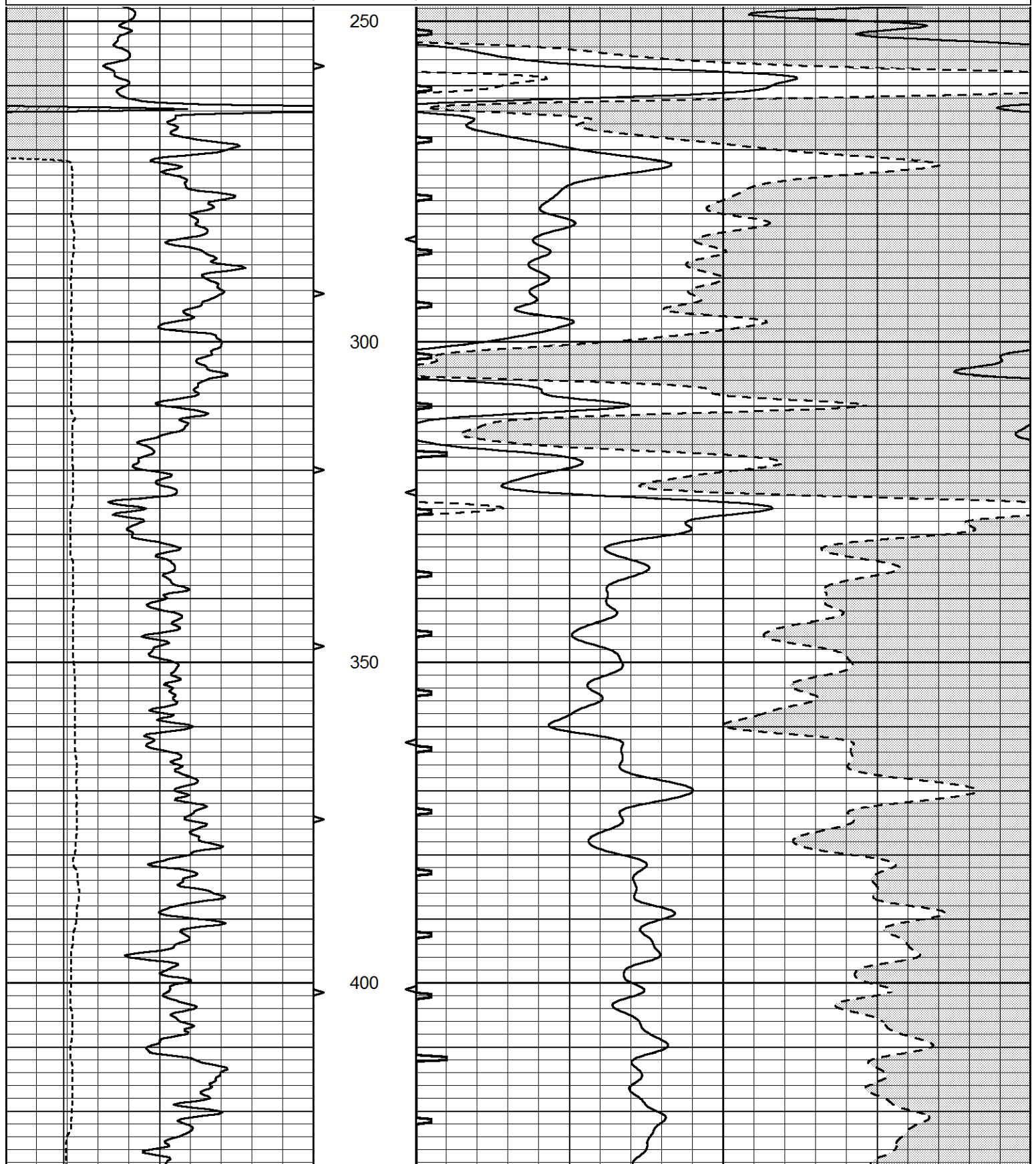
THANK YOU FOR USING ELI WIRELINE SERVICES, HAYS, KS. (785) 628-6395
DIRECTIONS
CROFT, KS. - SOUTH TO 110TH RD. - 1 EAST - 1/4 SOUTH - EAST INTO

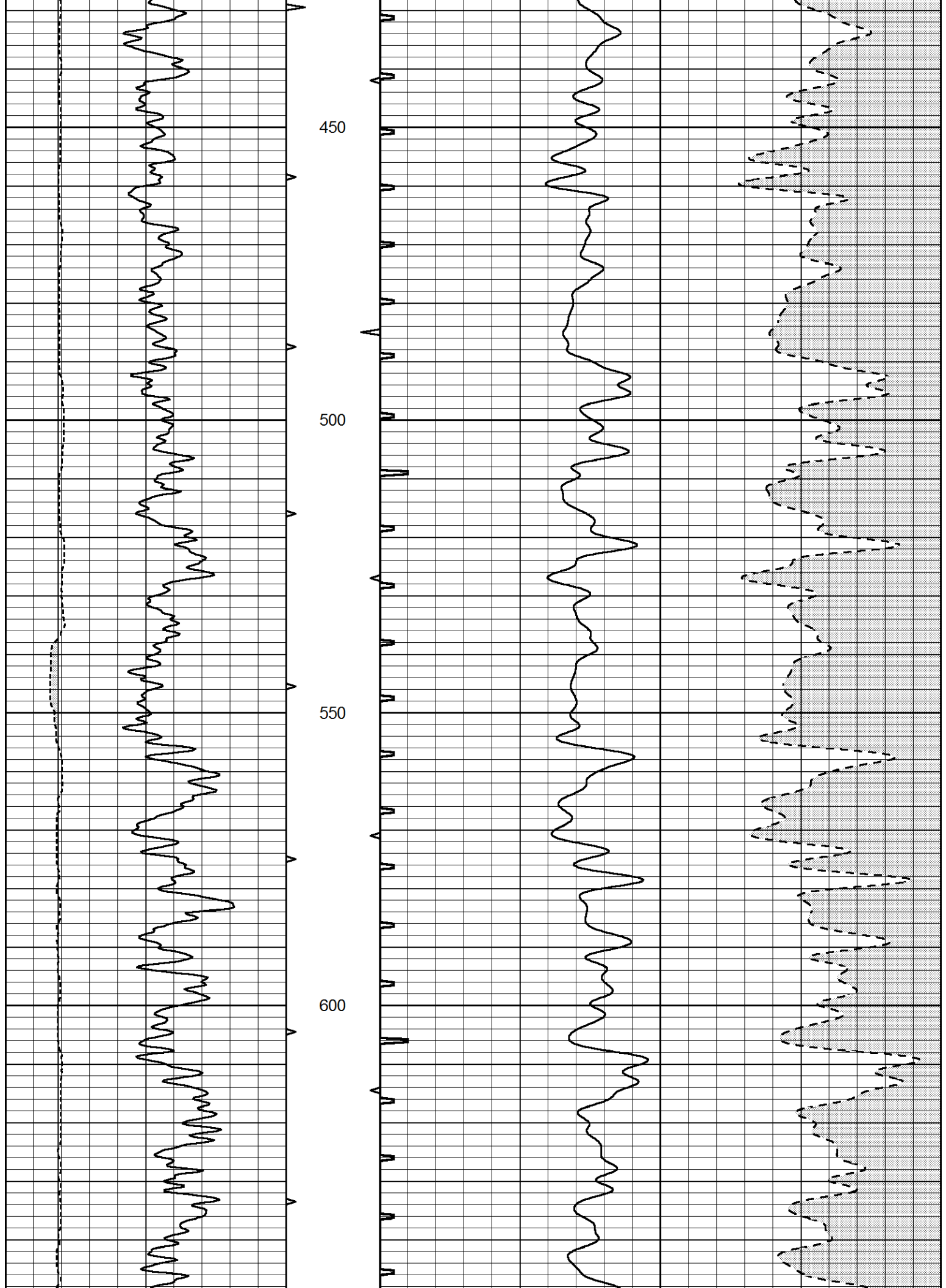


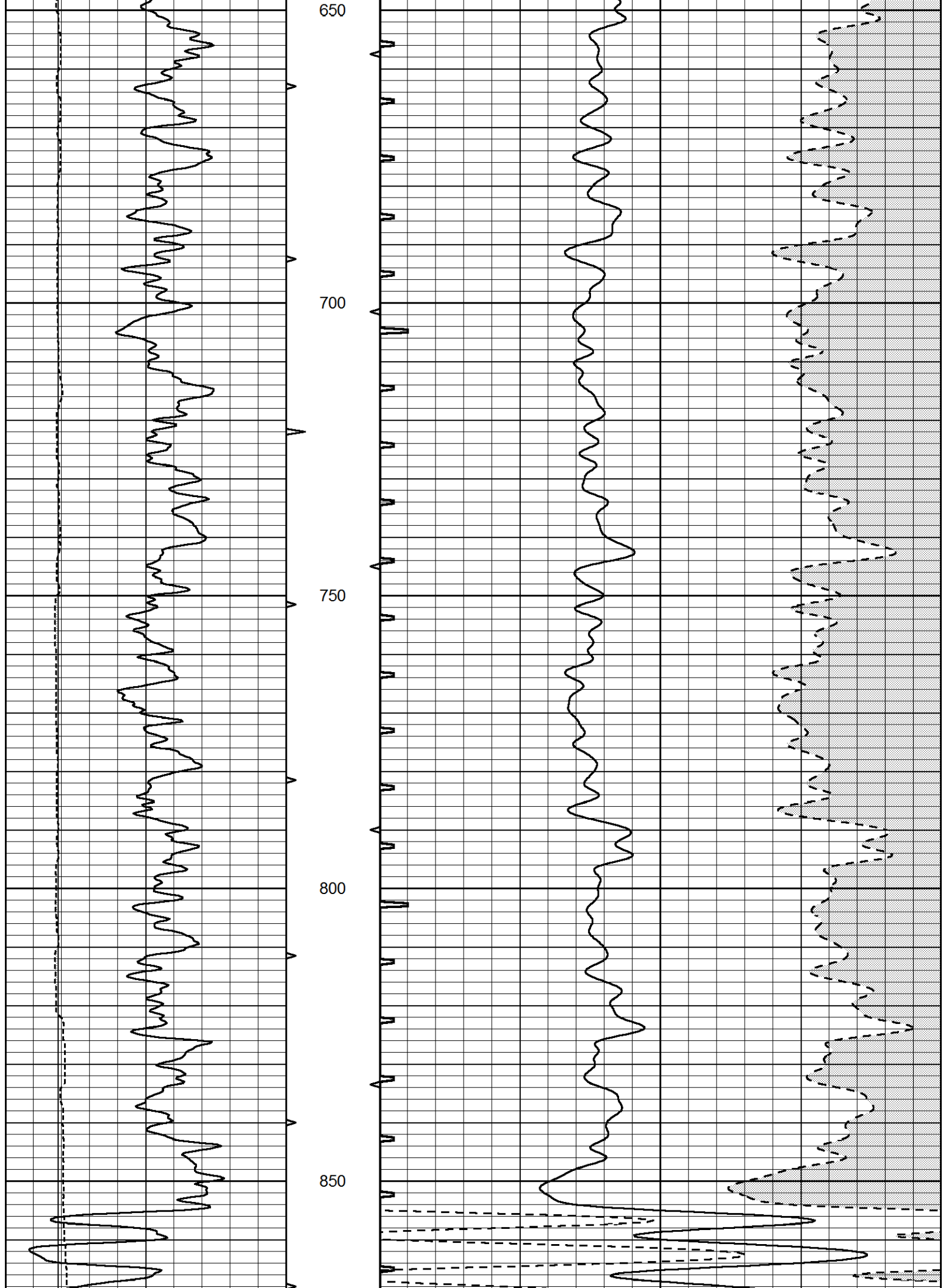
MAIN SECTION

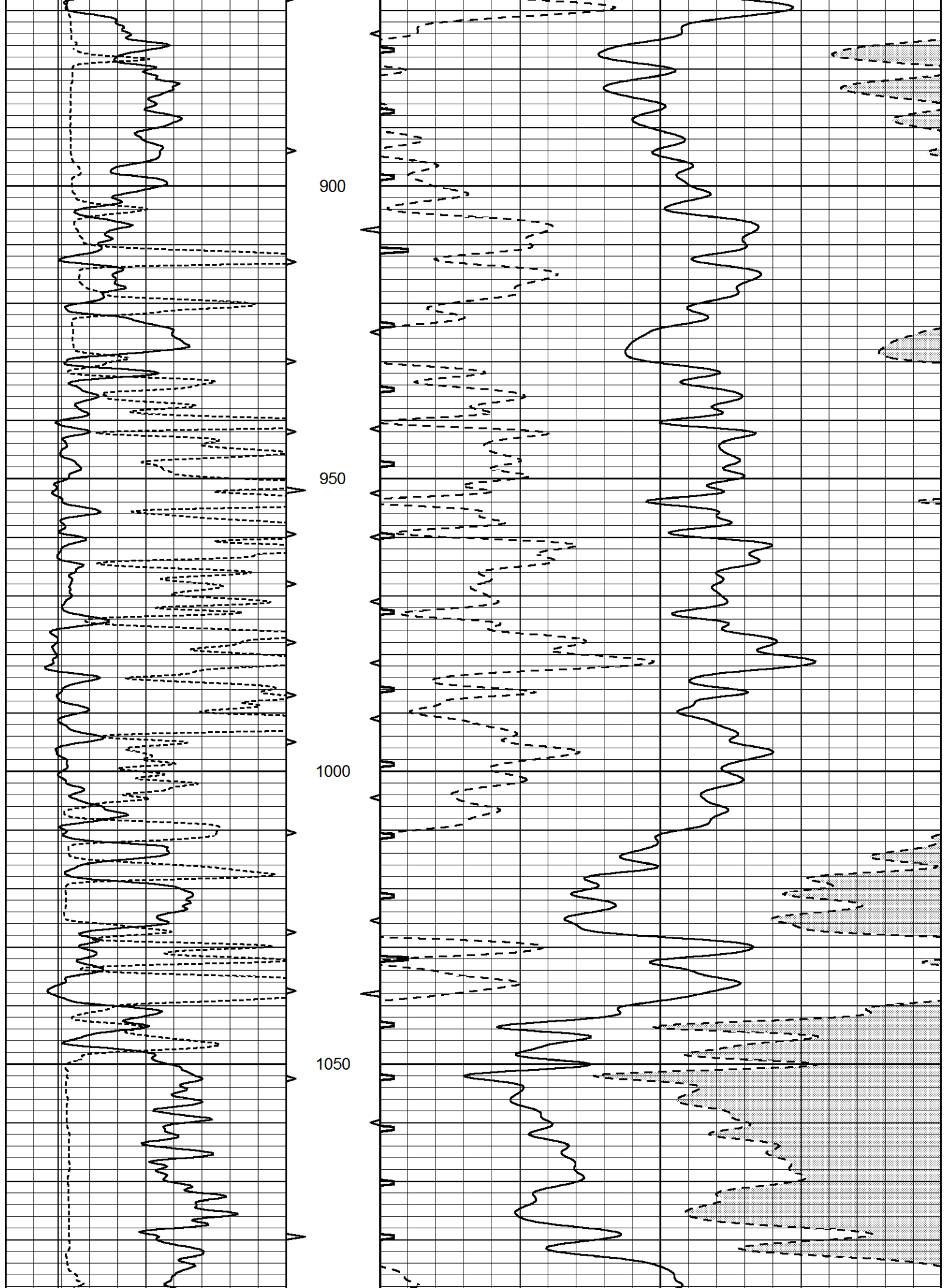
Database File 4726pe.db
 Dataset Pathname pass6.2
 Presentation Format _slt
 Dataset Creation Sun Feb 02 05:31:00 2020
 Charted by Depth in Feet scaled 1:240

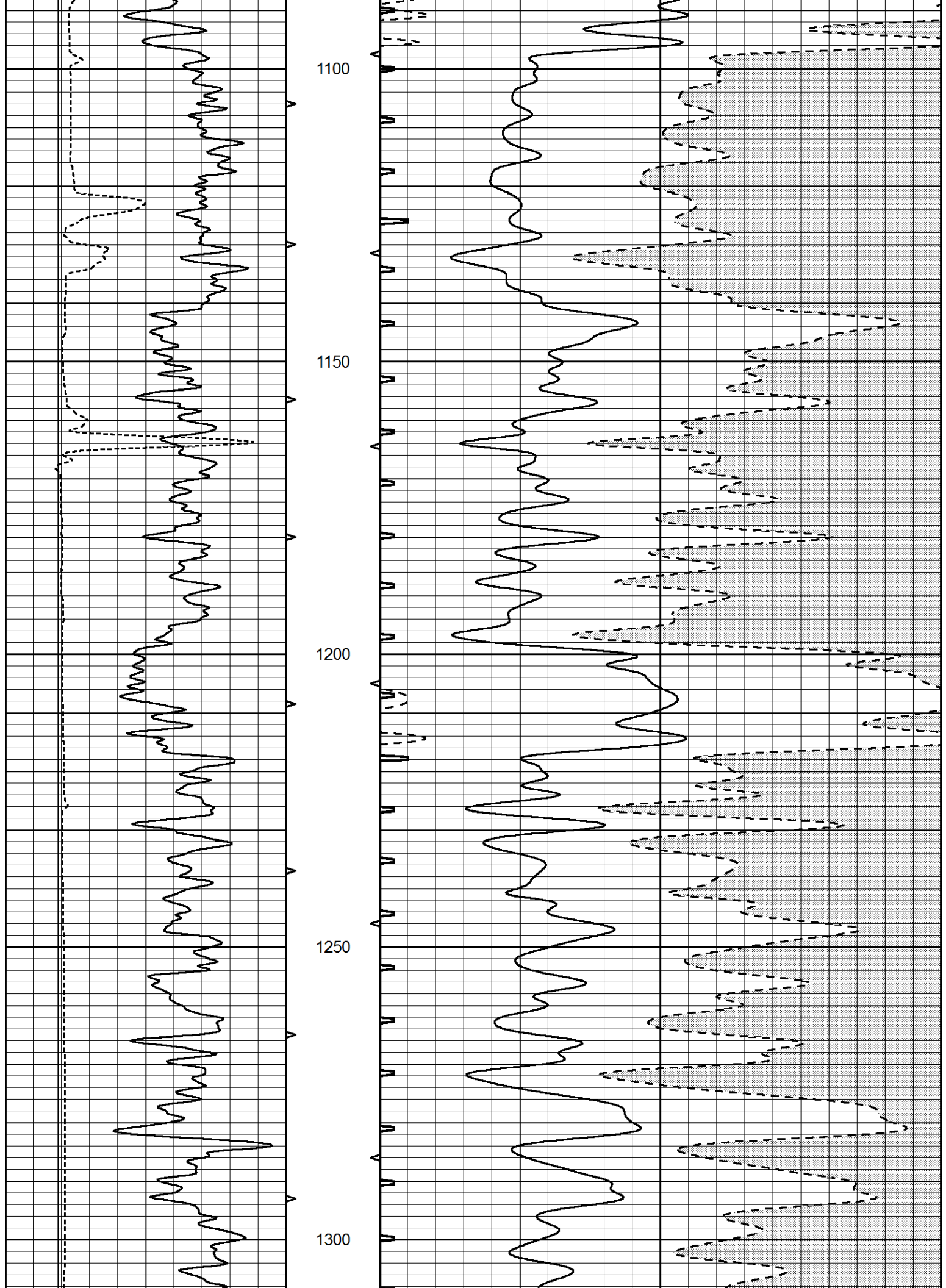
0	GAMMA RAY (GAPI)	150	ABHV	140	DELTA TIME (usec/ft)	40	
6	CALIPER (in)	16	10 (ft3)	0	30	SONIC POROSITY (pu)	-10
			TBHV	0	ITT (msec)	20	
			0 (ft3)	10			

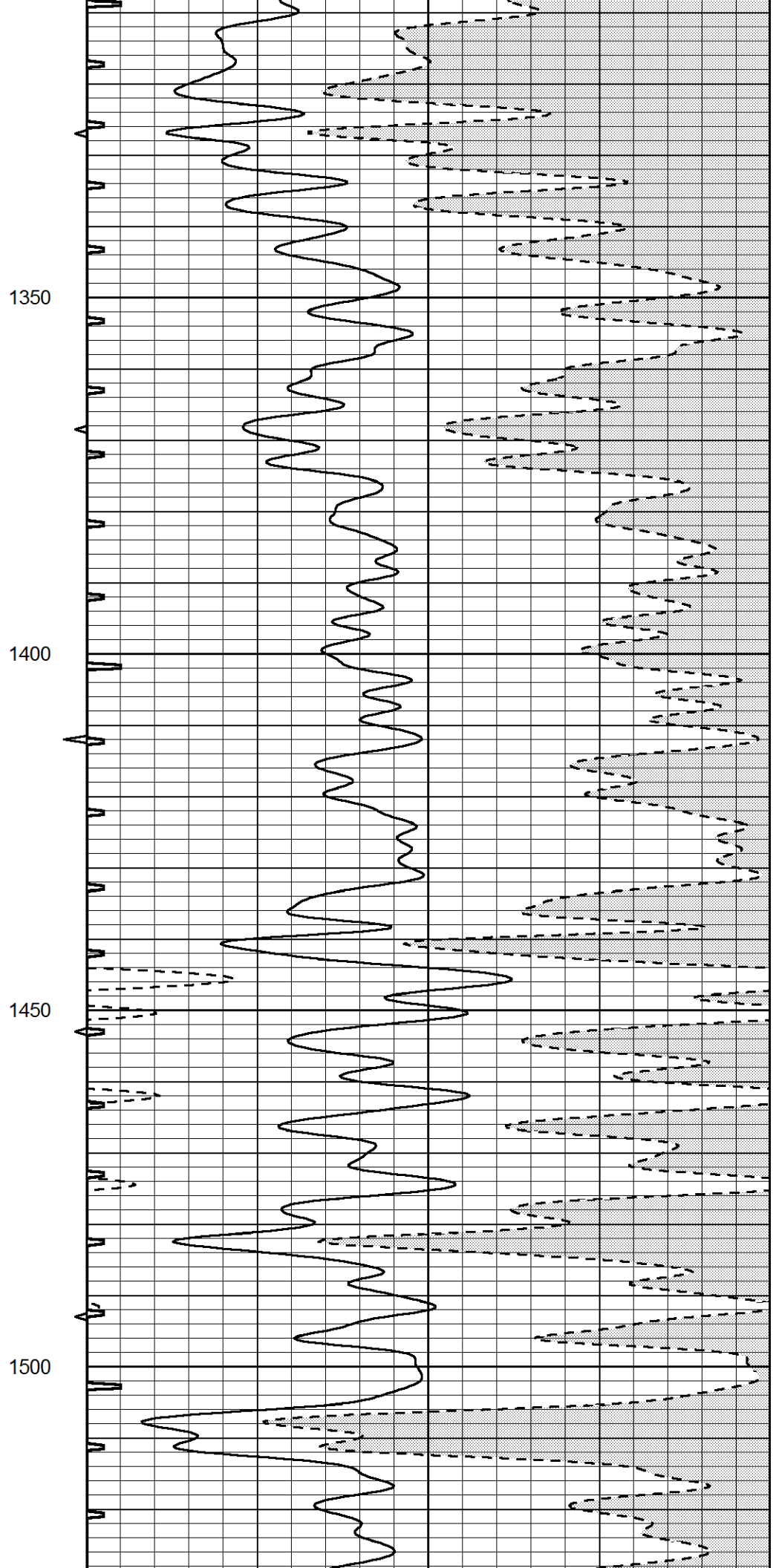
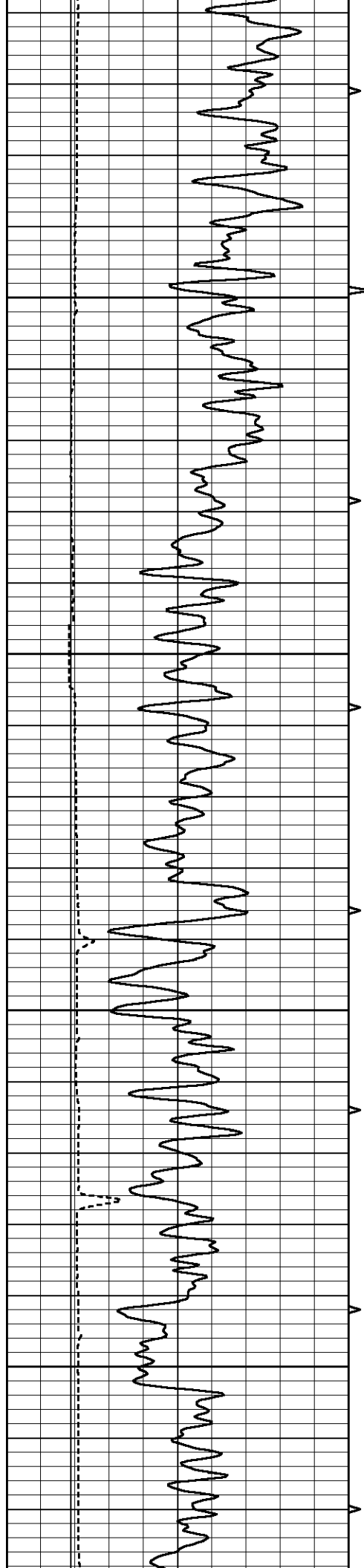


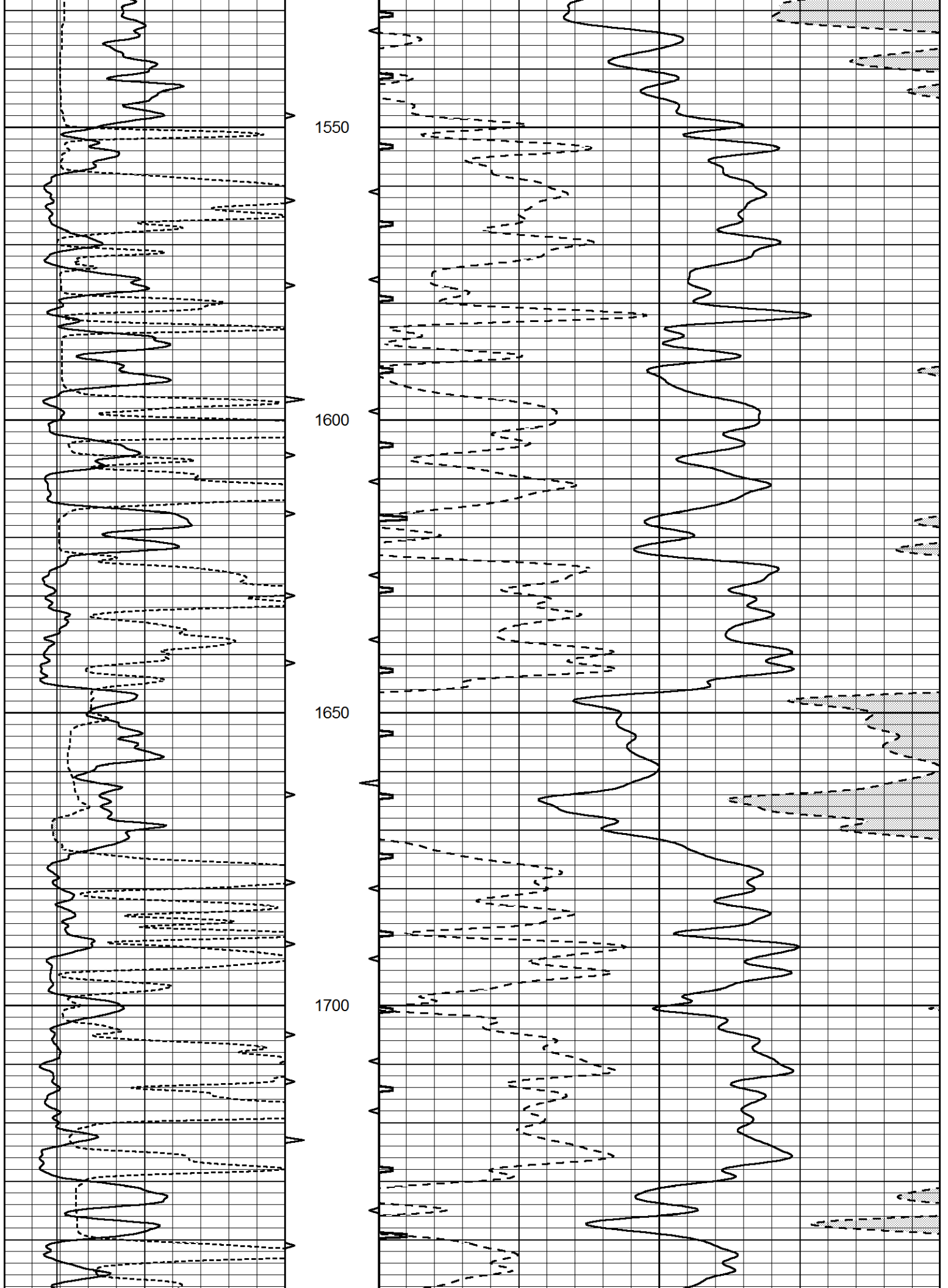


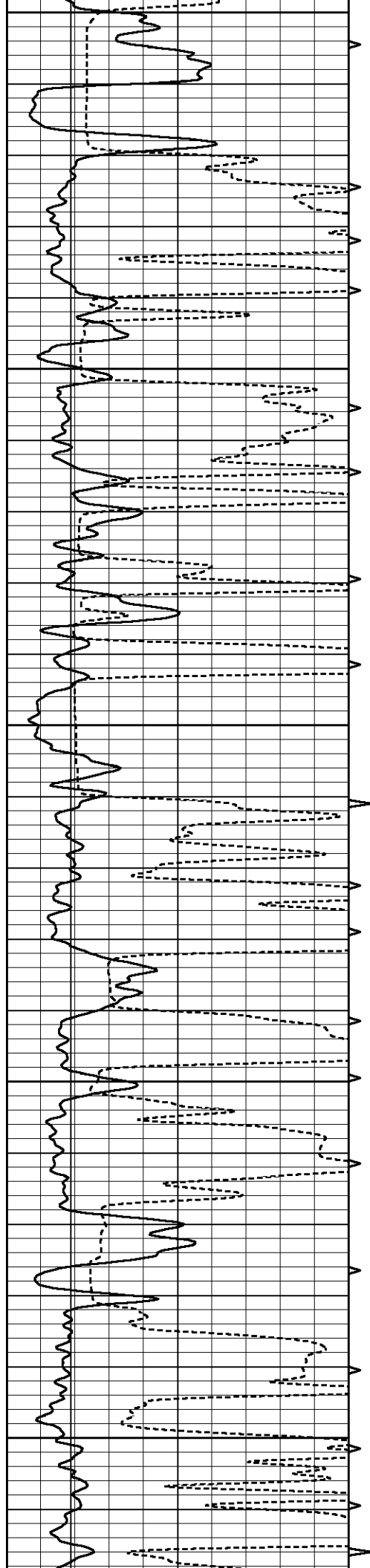












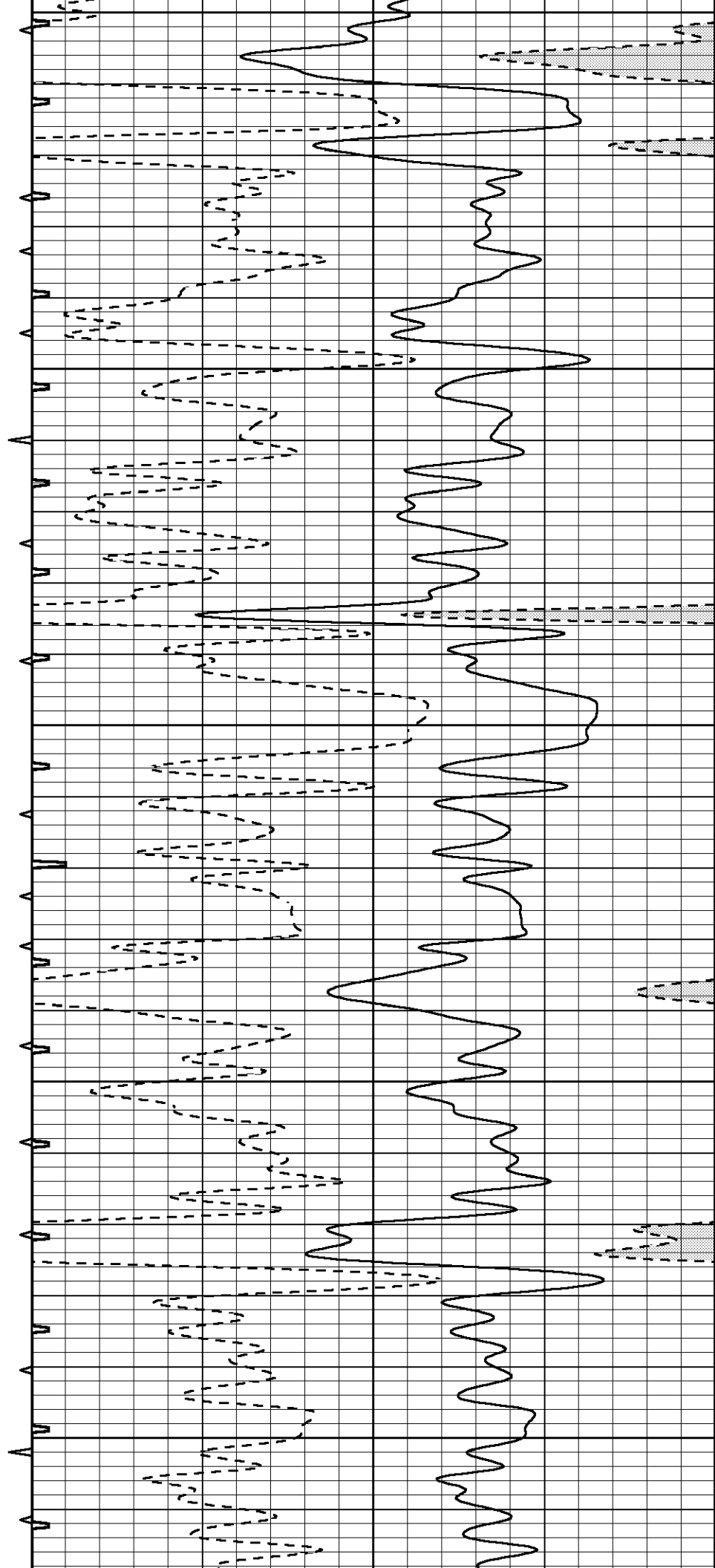
1750

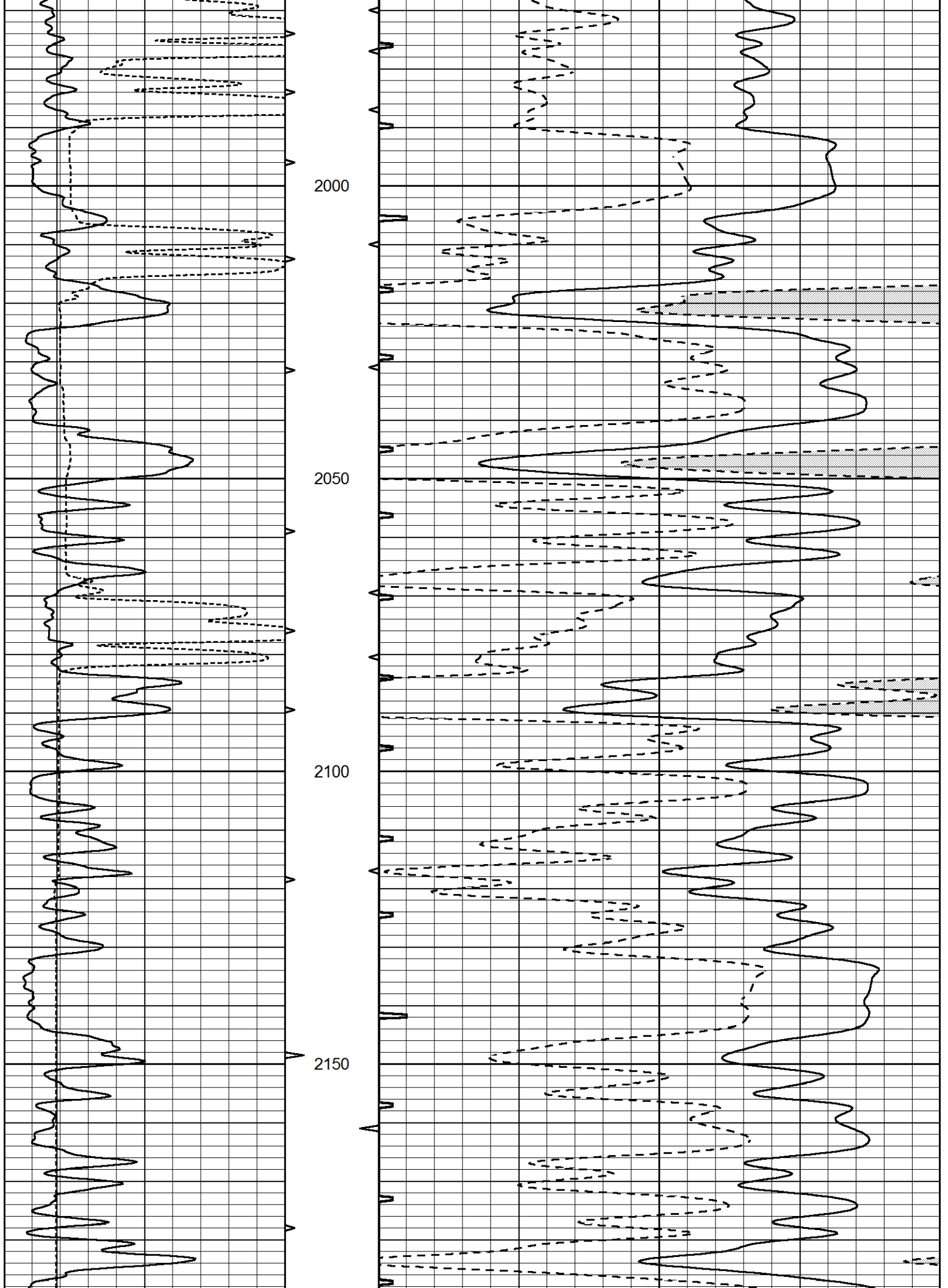
1800

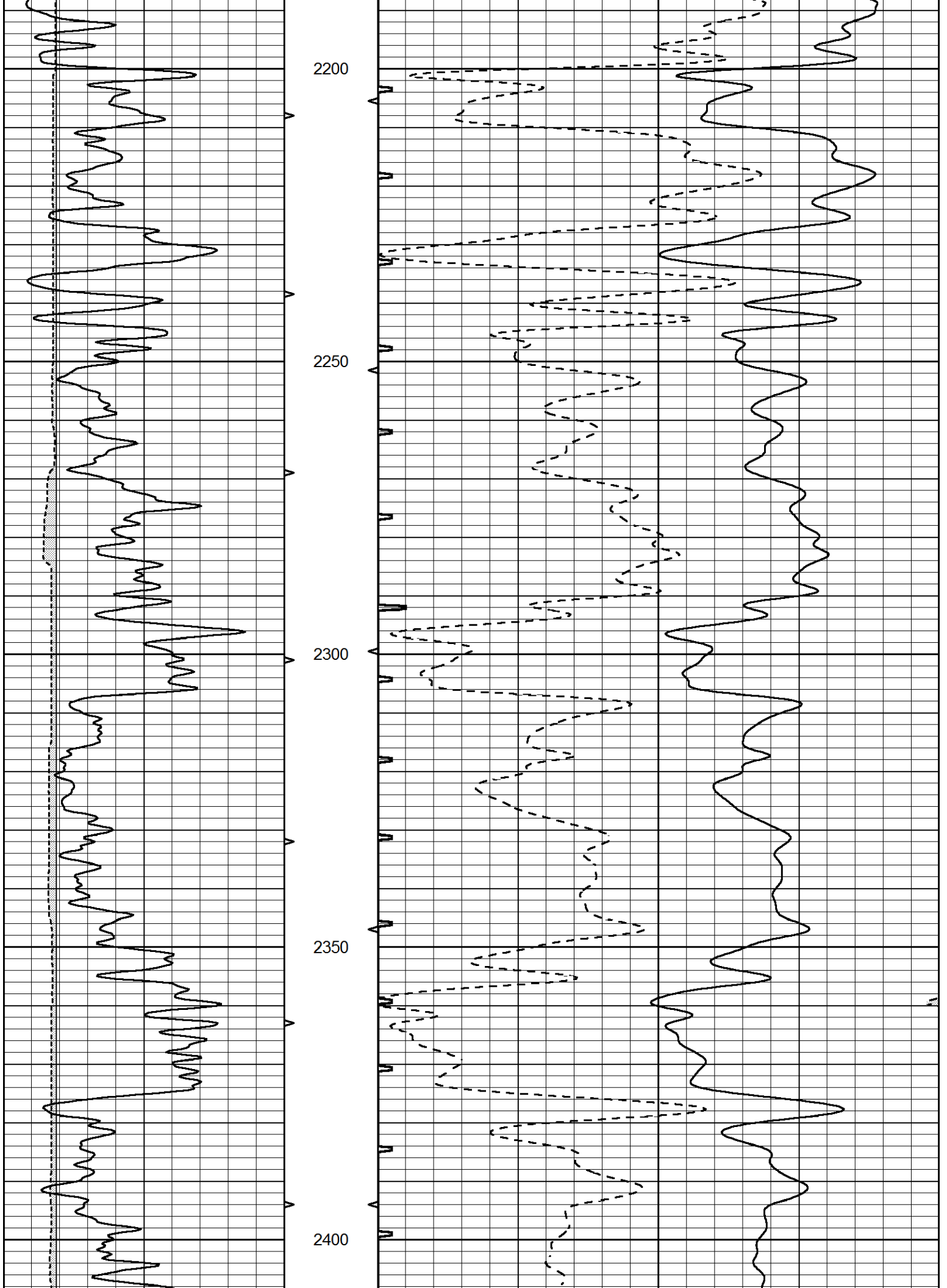
1850

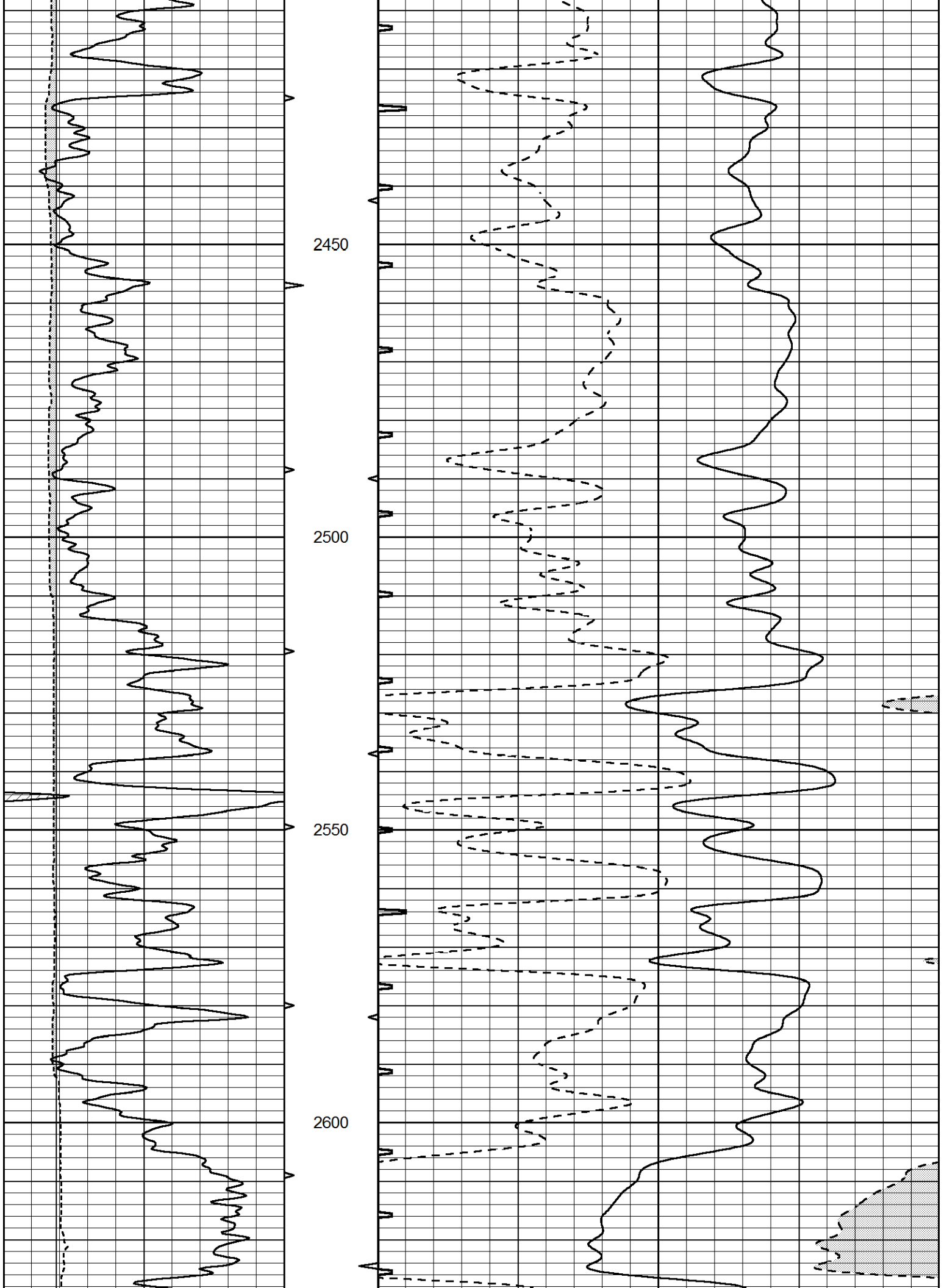
1900

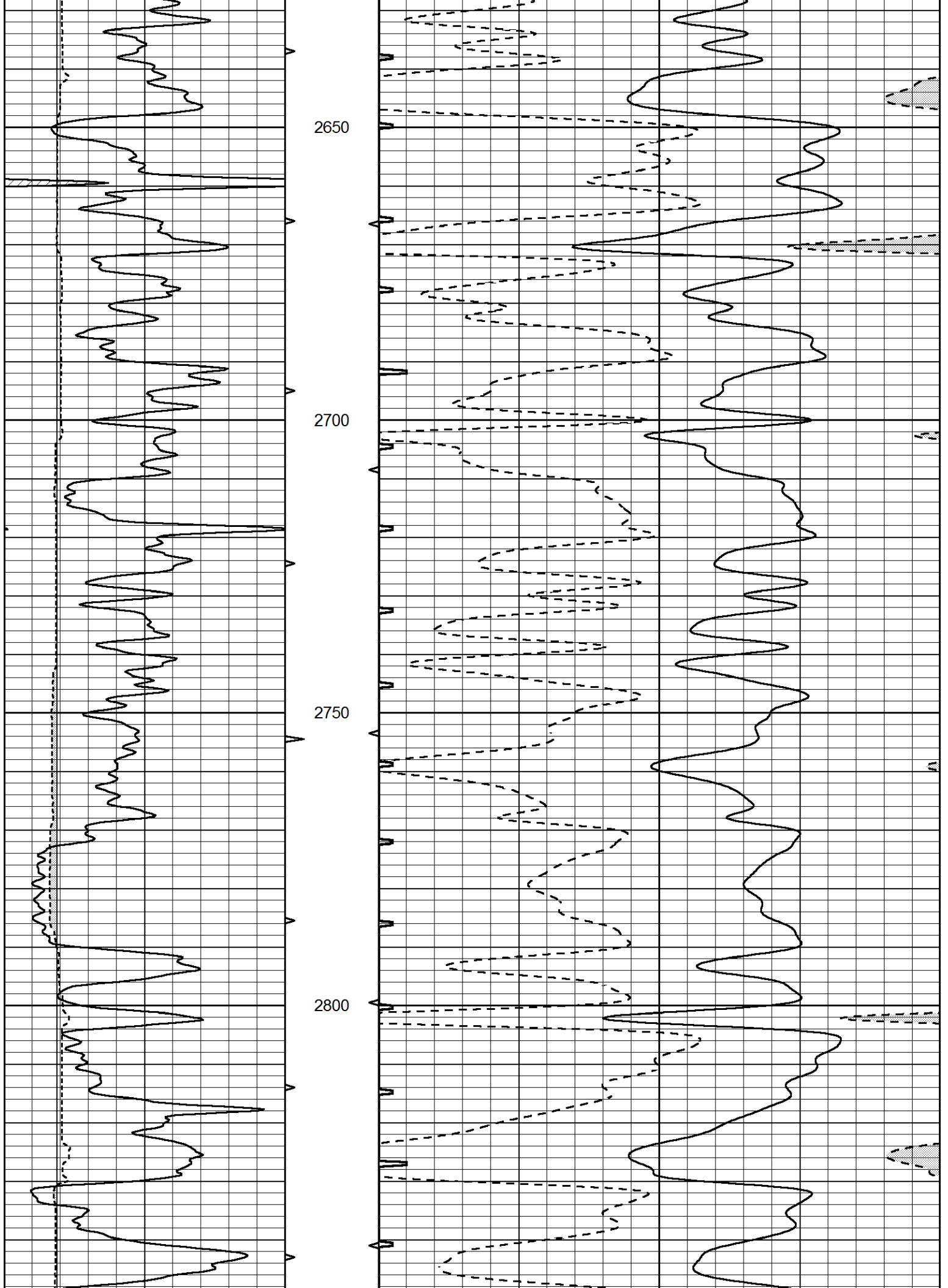
1950

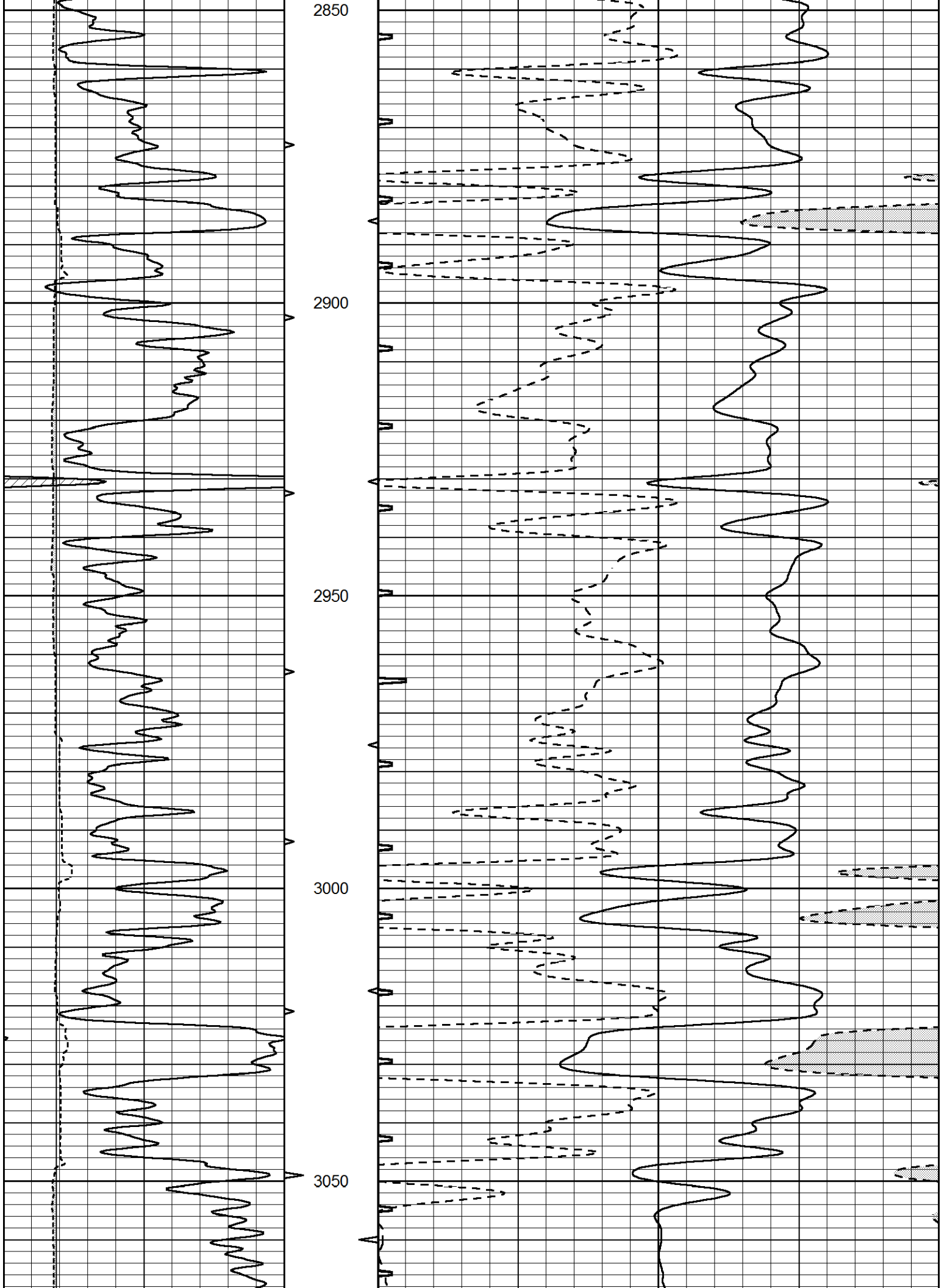


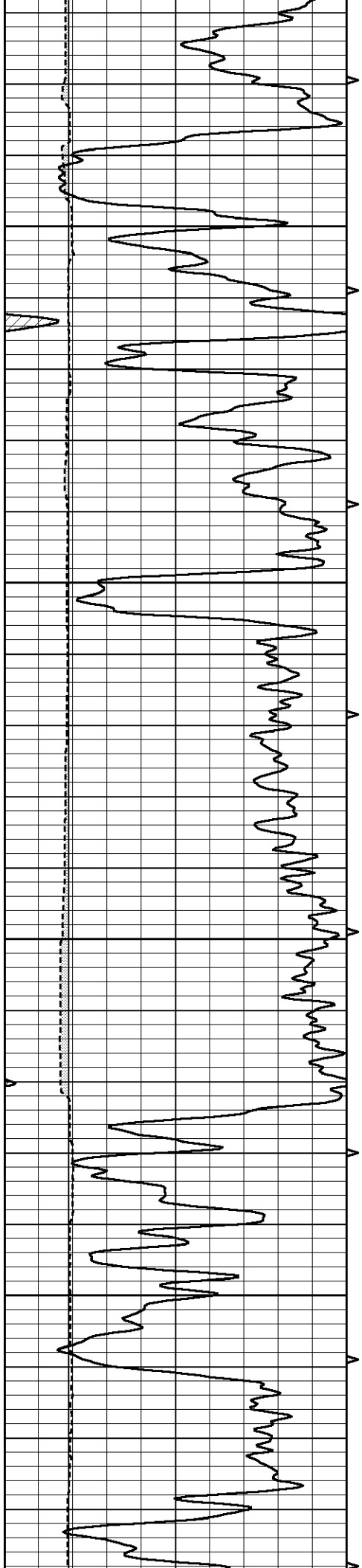










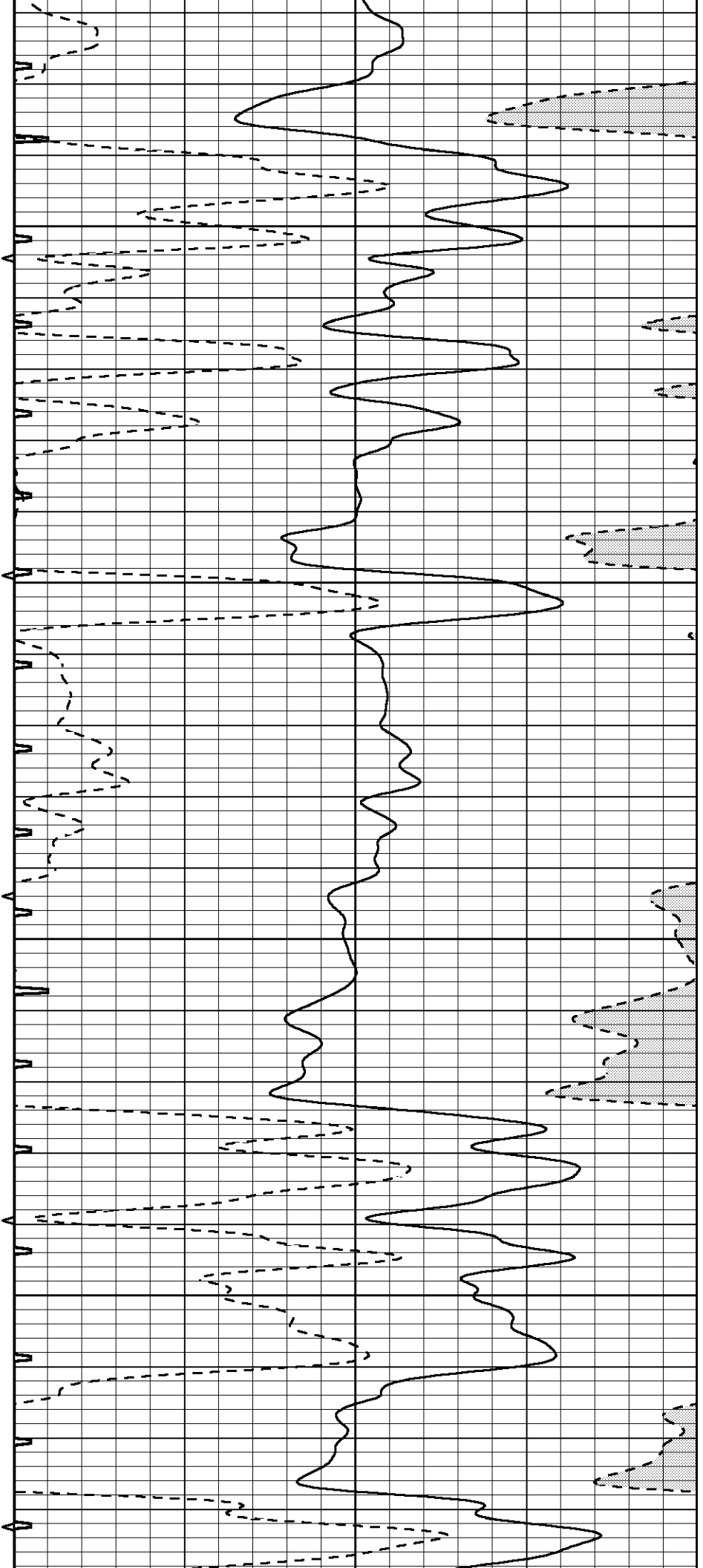


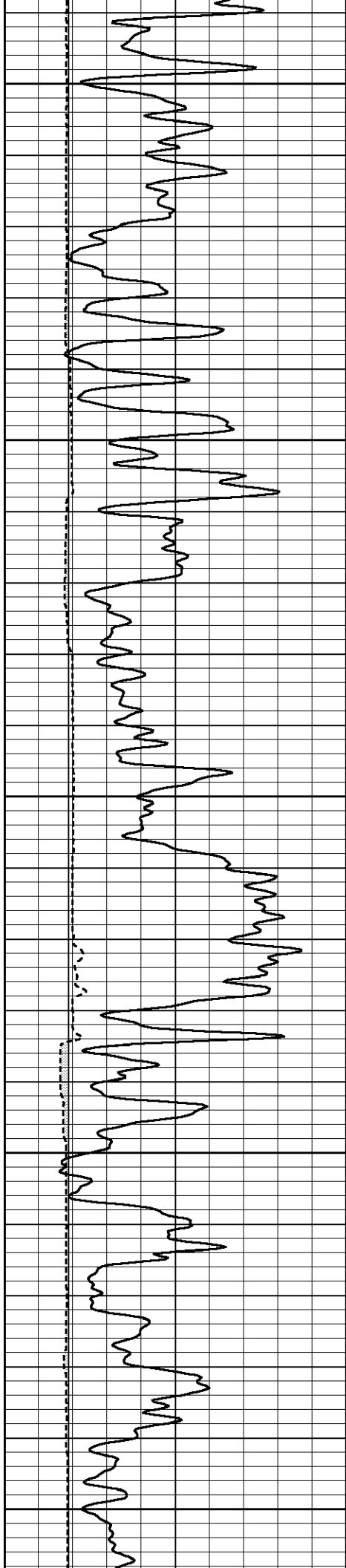
3100

3150

3200

3250





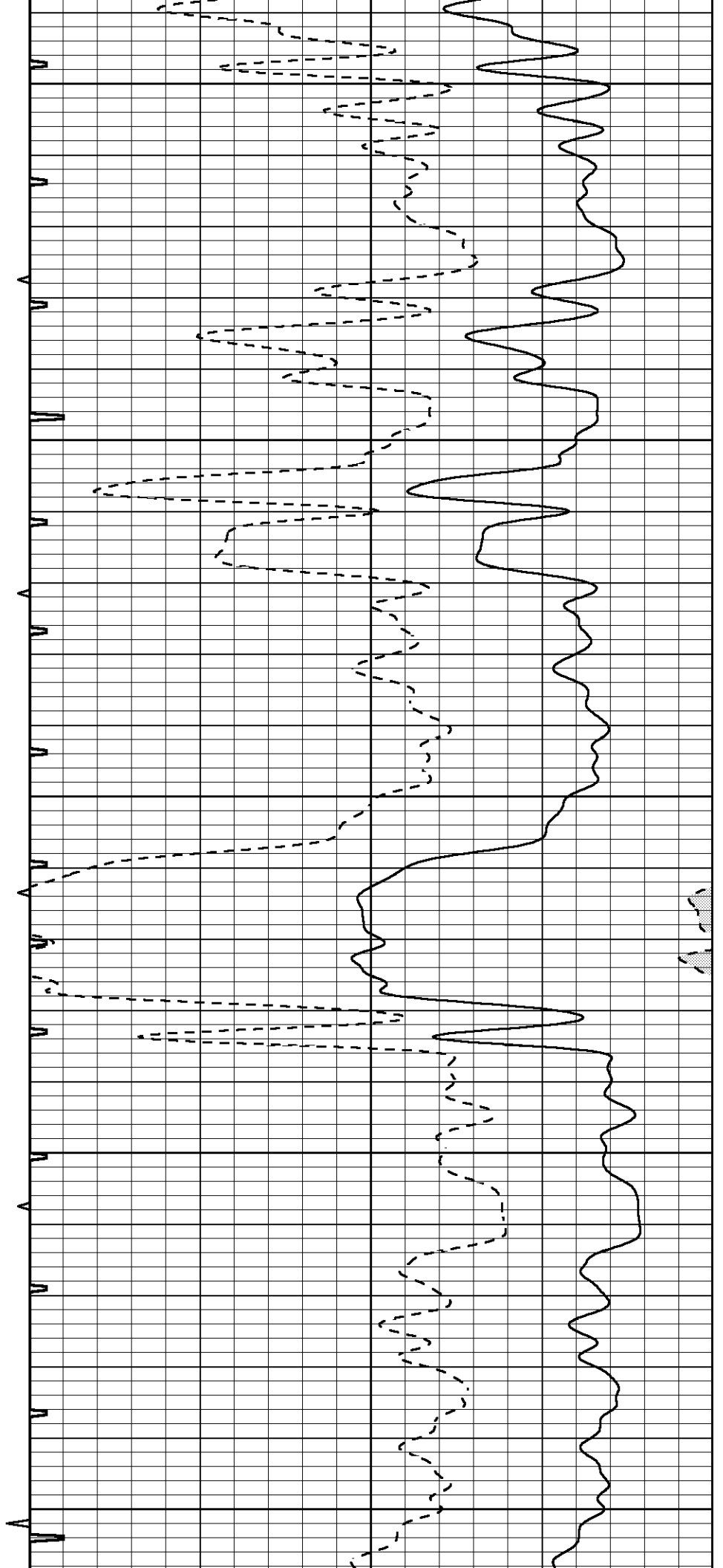
3300

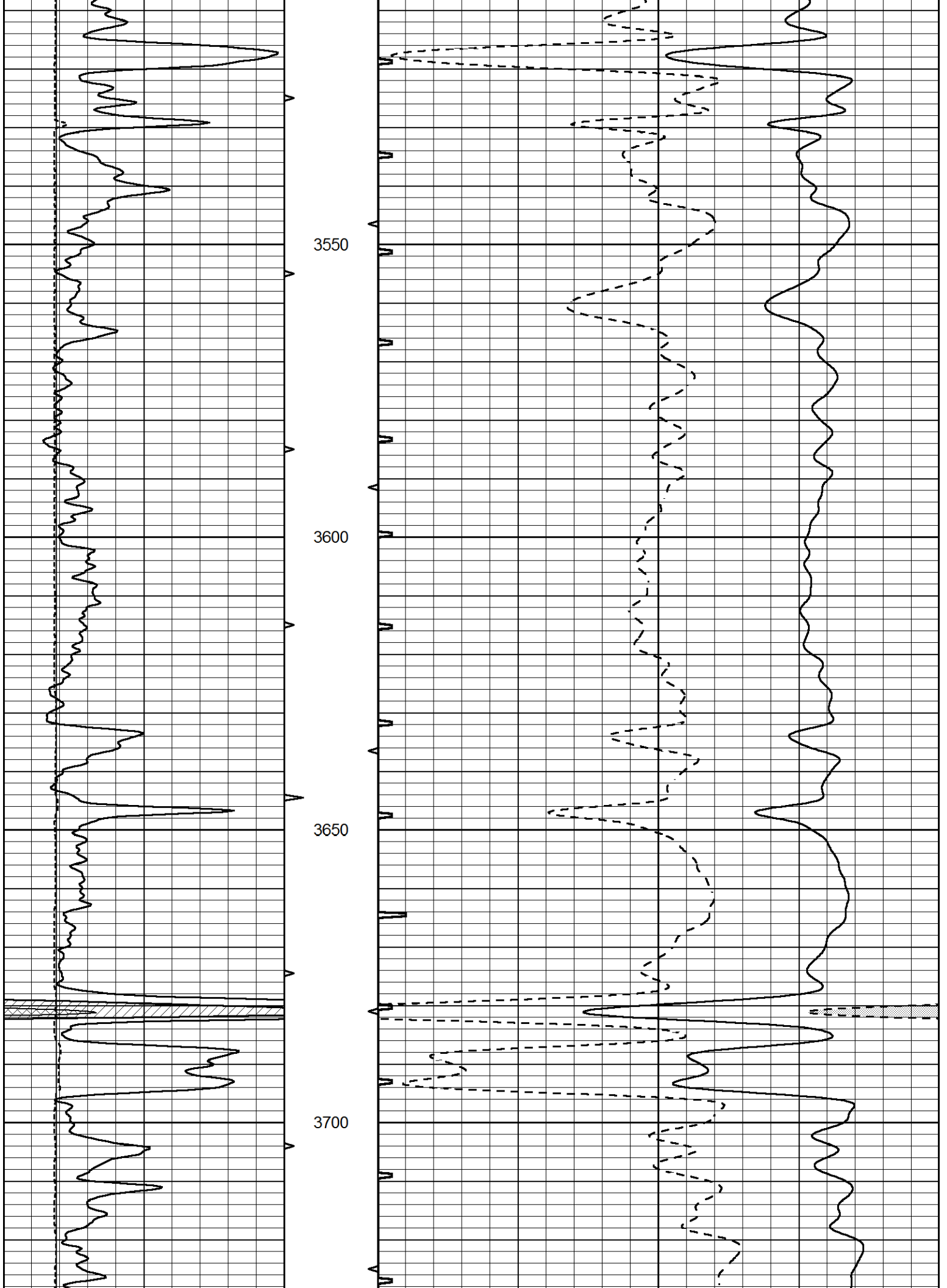
3350

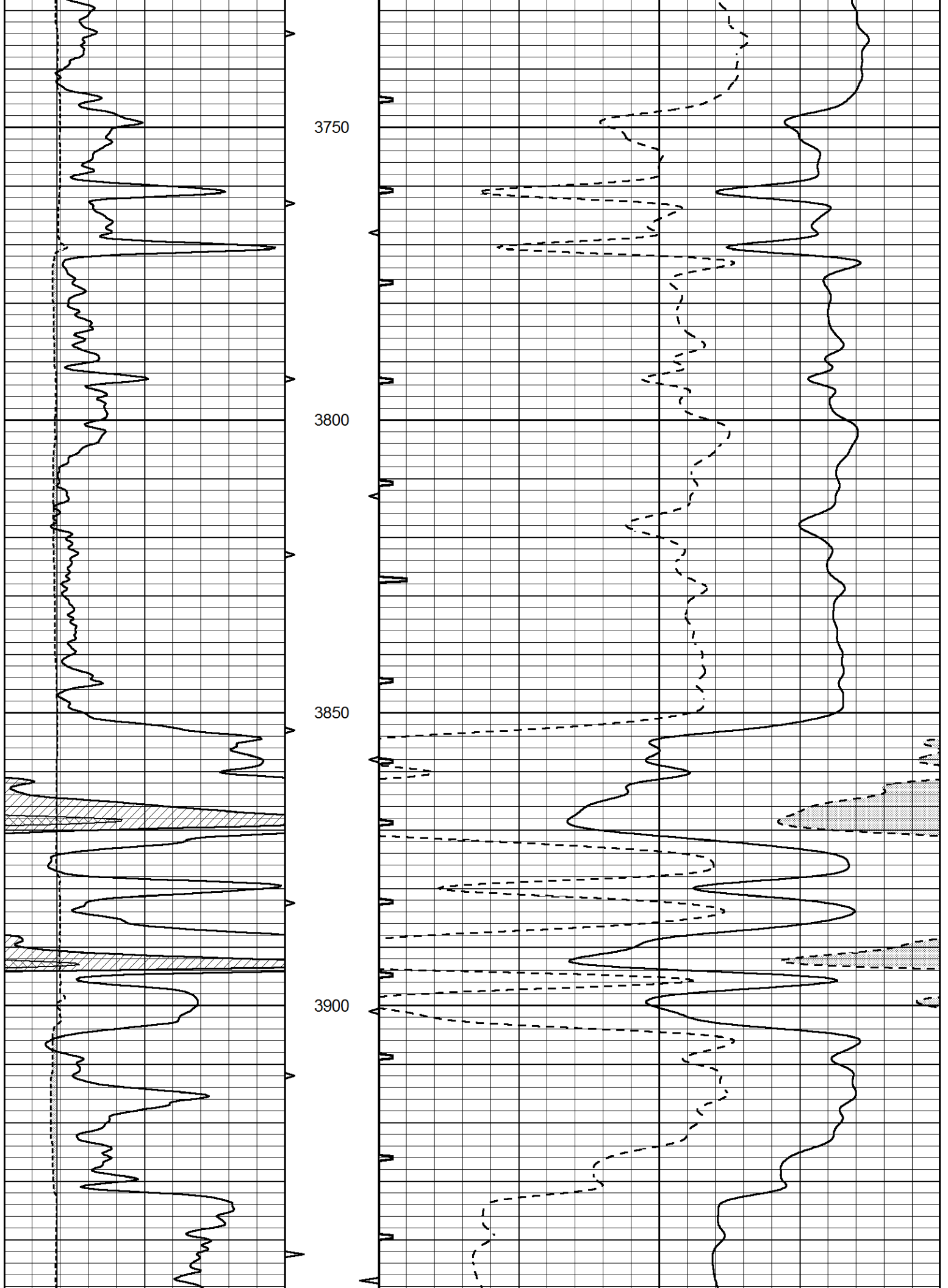
3400

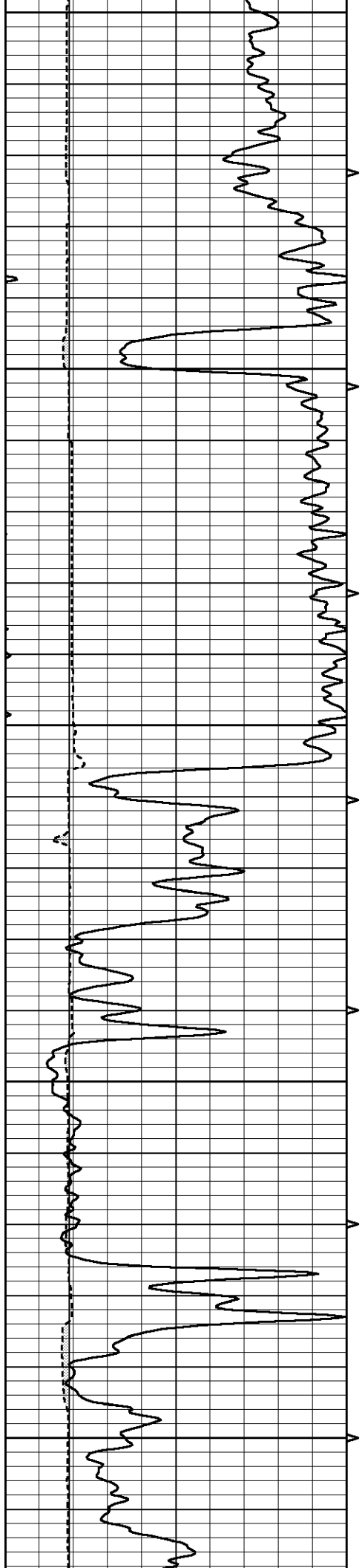
3450

3500









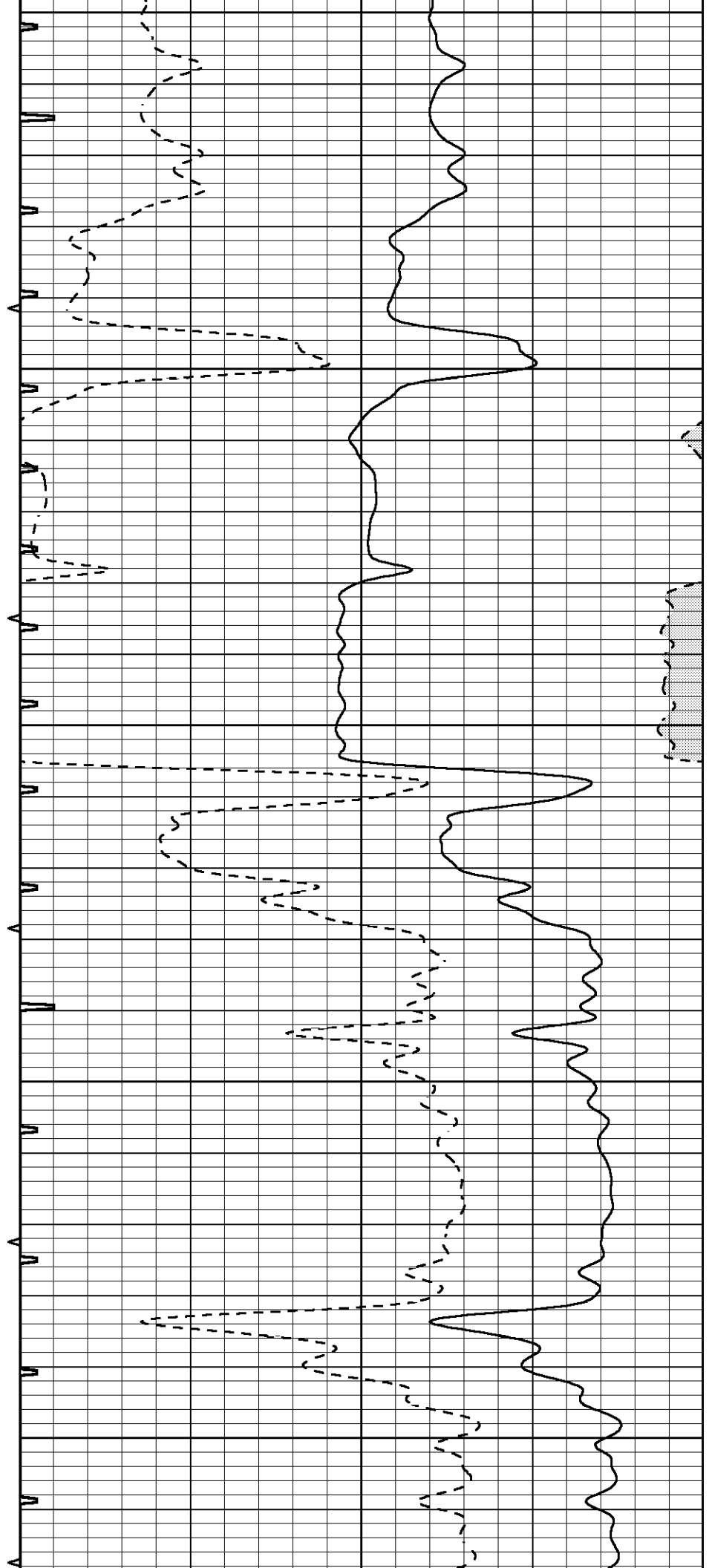
3950

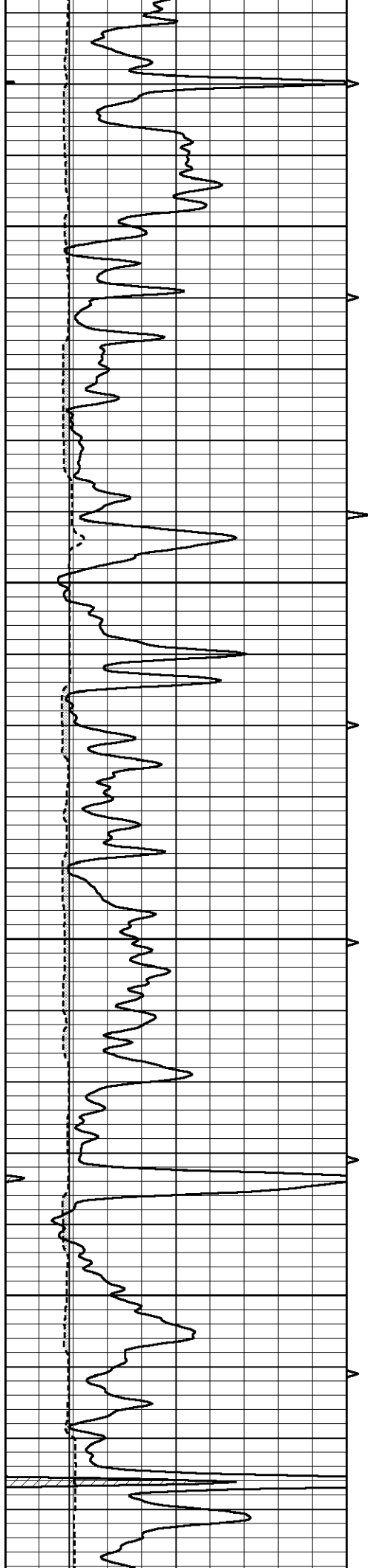
4000

4050

4100

4150



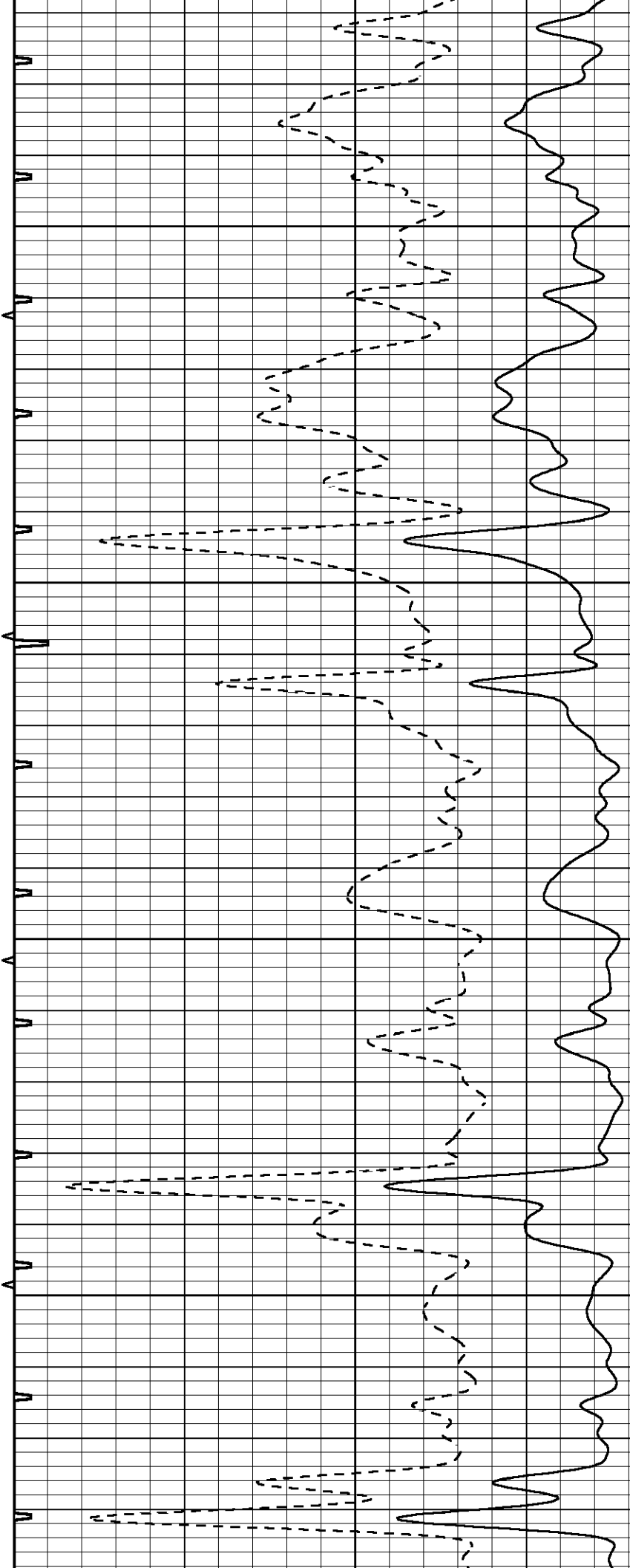


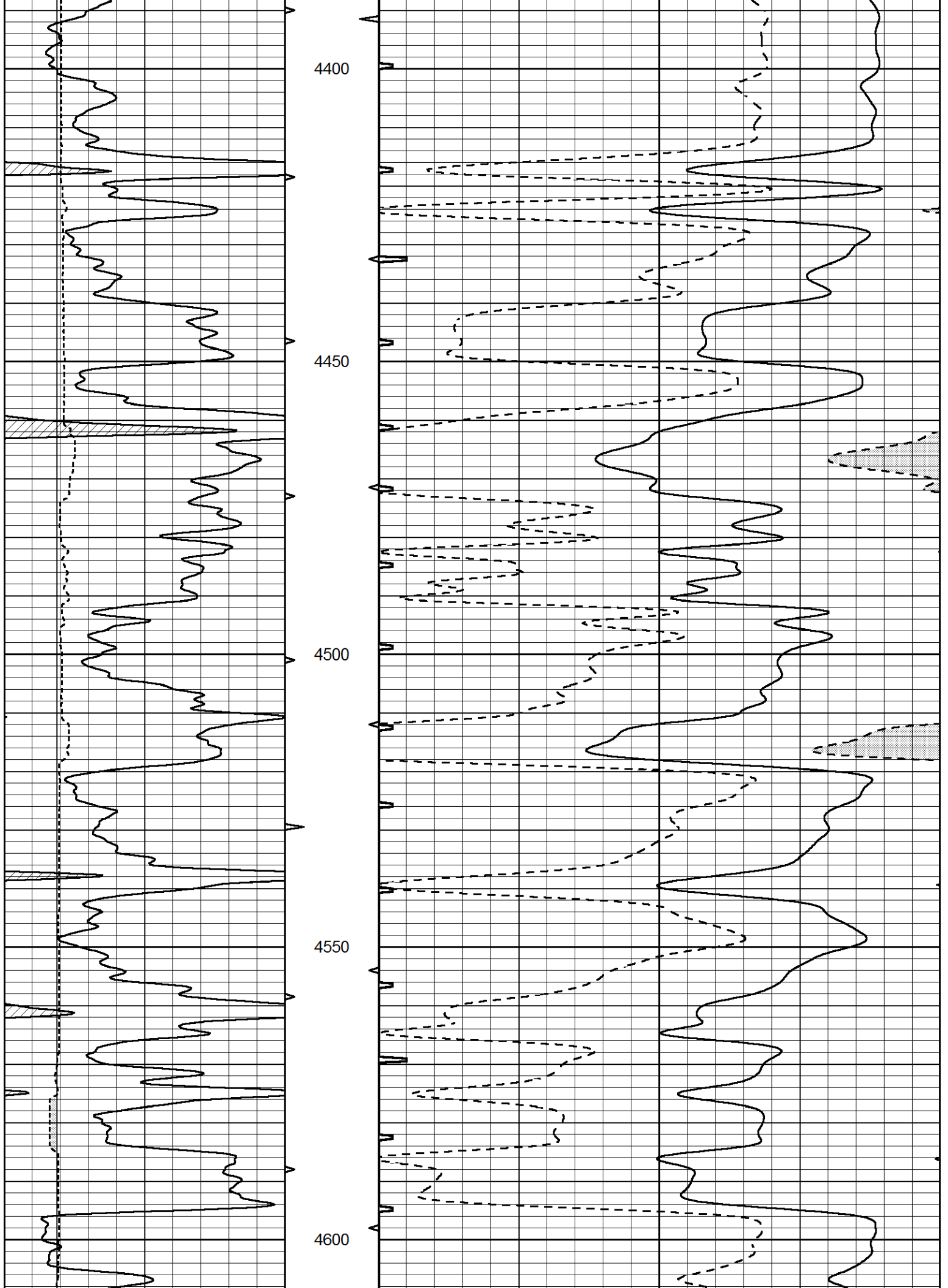
4200

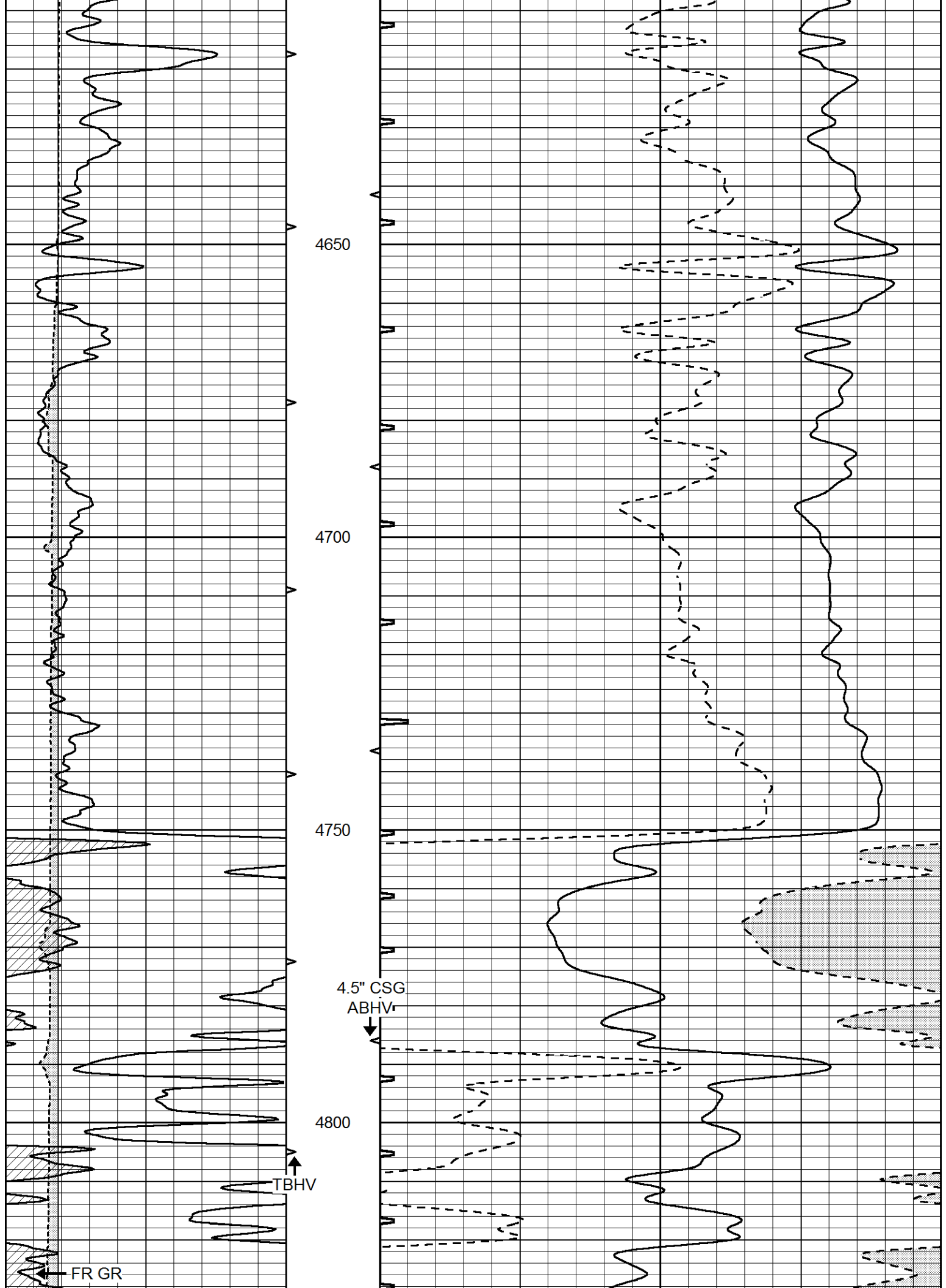
4250

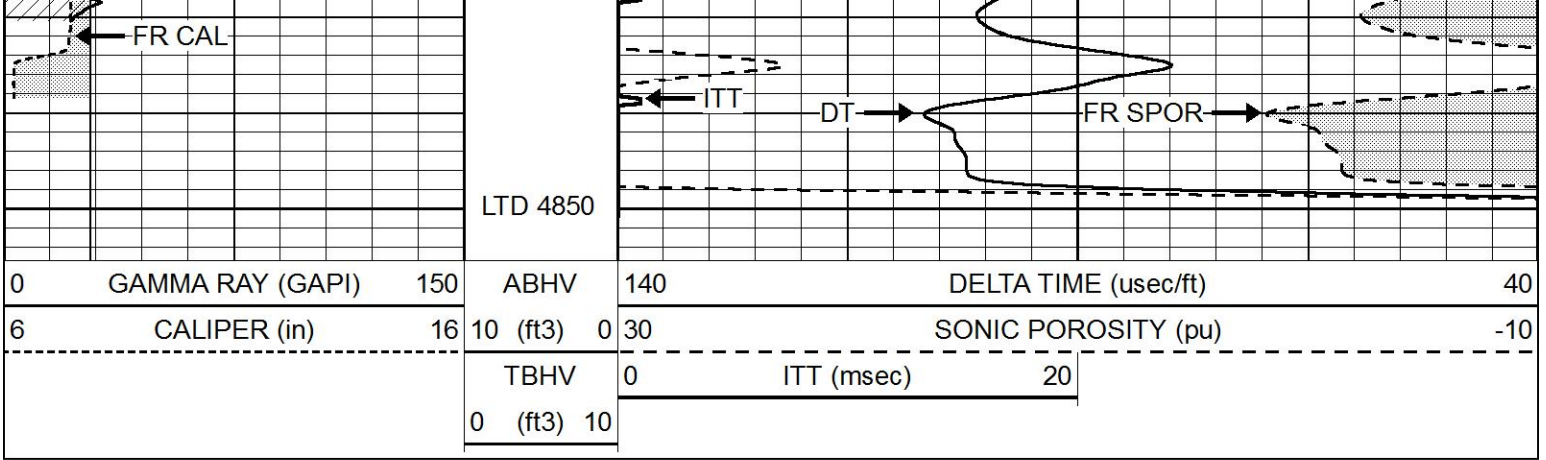
4300

4350





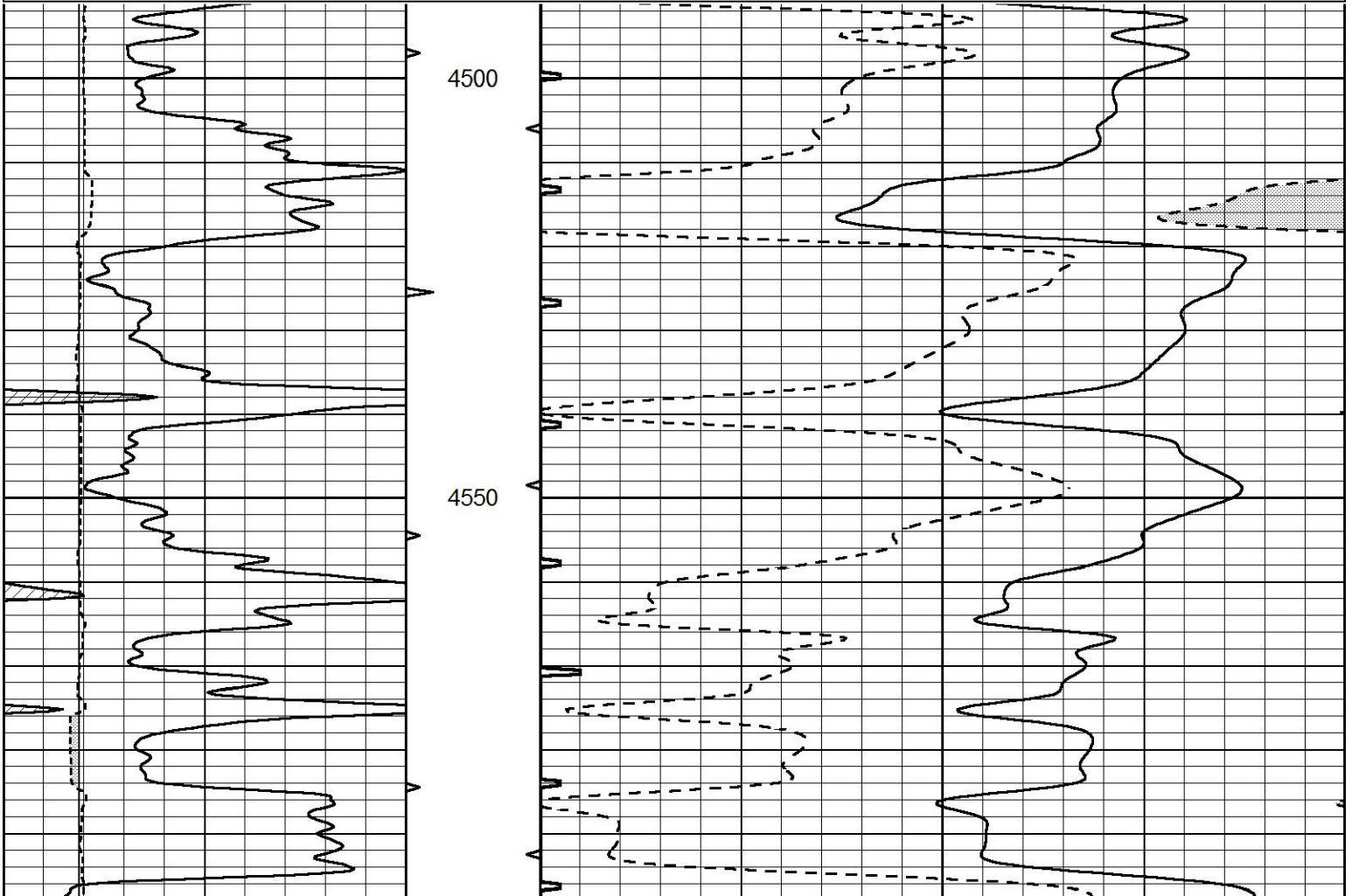


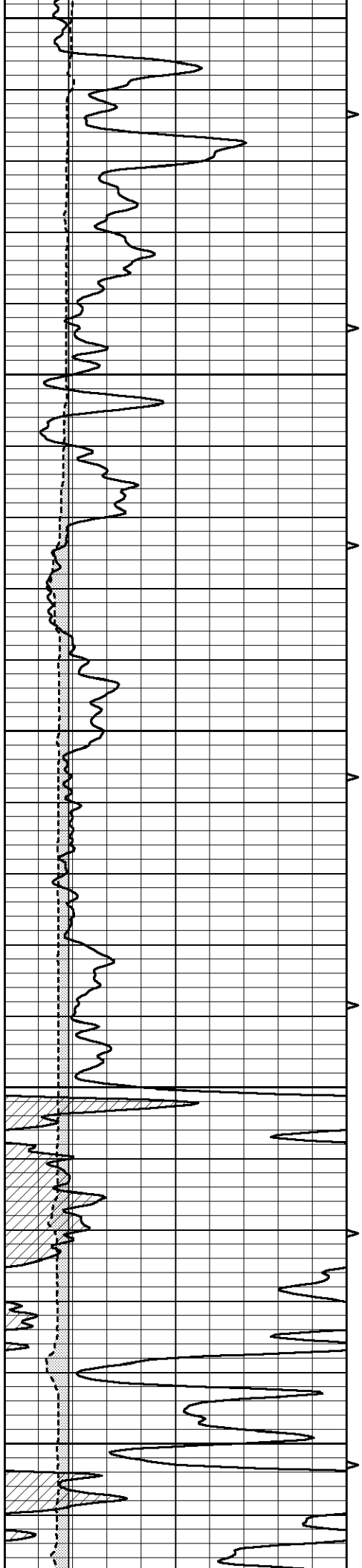


REPEAT SECTION

Database File 4726pe.db
 Dataset Pathname pass5.1
 Presentation Format _slt
 Dataset Creation Sun Feb 02 04:32:31 2020
 Charted by Depth in Feet scaled 1:240

0	GAMMA RAY (GAPI)	150	ABHV	140	DELTA TIME (usec/ft)	40
6	CALIPER (in)	16	10 (ft3) 0	30	SONIC POROSITY (pu)	-10
			TBHV	0	ITT (msec)	20
			0 (ft3) 10			





4600

4650

4700

4750

4800

