



**COMPENSATED
DENSITY / NEUTRON
LOG**

Company	REILLY OIL COMPANY, INC.	Location:	APL # : 15-195-23099-0000	Other Services DIL/MEL
Well	LeCUYER #1	SEC 12 TWP 14S RGE 22W		
Field	CEDAR VIEW SOUTHEAST	GROUND LEVEL	Elevation	2244
County	TREGO	Log Measured From	KELLY BUSHING	7' A.G.L.
State	KANSAS	Drilling Measured From	KELLY BUSHING	G.L. 2244

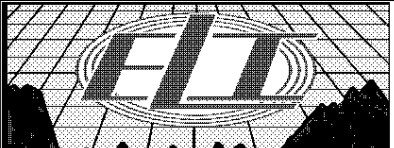
Date	1/29/20
Run Number	ONE
Depth Driller	4124
Depth Logger	4122
Bottom Logged Interval	4098
Top Log Interval	3200
Casing Driller	8 5/8"@222'
Casing Logger	222
Bit Size	7 7/8"
Type Fluid in Hole	CHEMICAL MUD
Density / Viscosity	9.3/59
pH / Fluid Loss	11.0/7.6
Source of Sample	FLOWLINE
Rim @ Meas. Temp	.550@70F
Rmf @ Meas. Temp	.413@70F
Rmc @ Meas. Temp	.660@70F
Source of Rmf / Rmc	MEASUREMENT
Rim @ BHT	.329@117F
Time Circulation Stopped	2 HOURS
Time Logger on Bottom	10:30 A.M.
Maximum Recorded Temperature	117F
Equipment Number	922339
Location	HAYS, KANSAS
Recorded By	JEFF LUEBBERS
Witnessed By	RICHARD BELL

<<< Fold Here >>>

All interpretations are opinions based on inferences from electrical or other measurements and we cannot and do not guarantee the accuracy or correctness of any interpretation, and we shall not, except in the case of gross or willful negligence on our part, be liable or responsible for any loss, costs, damages, or expenses incurred or sustained by anyone resulting from any interpretation made by any of our officers, agents or employees. These interpretations are also subject to our general terms and conditions set out in our current Price Schedule.

Comments

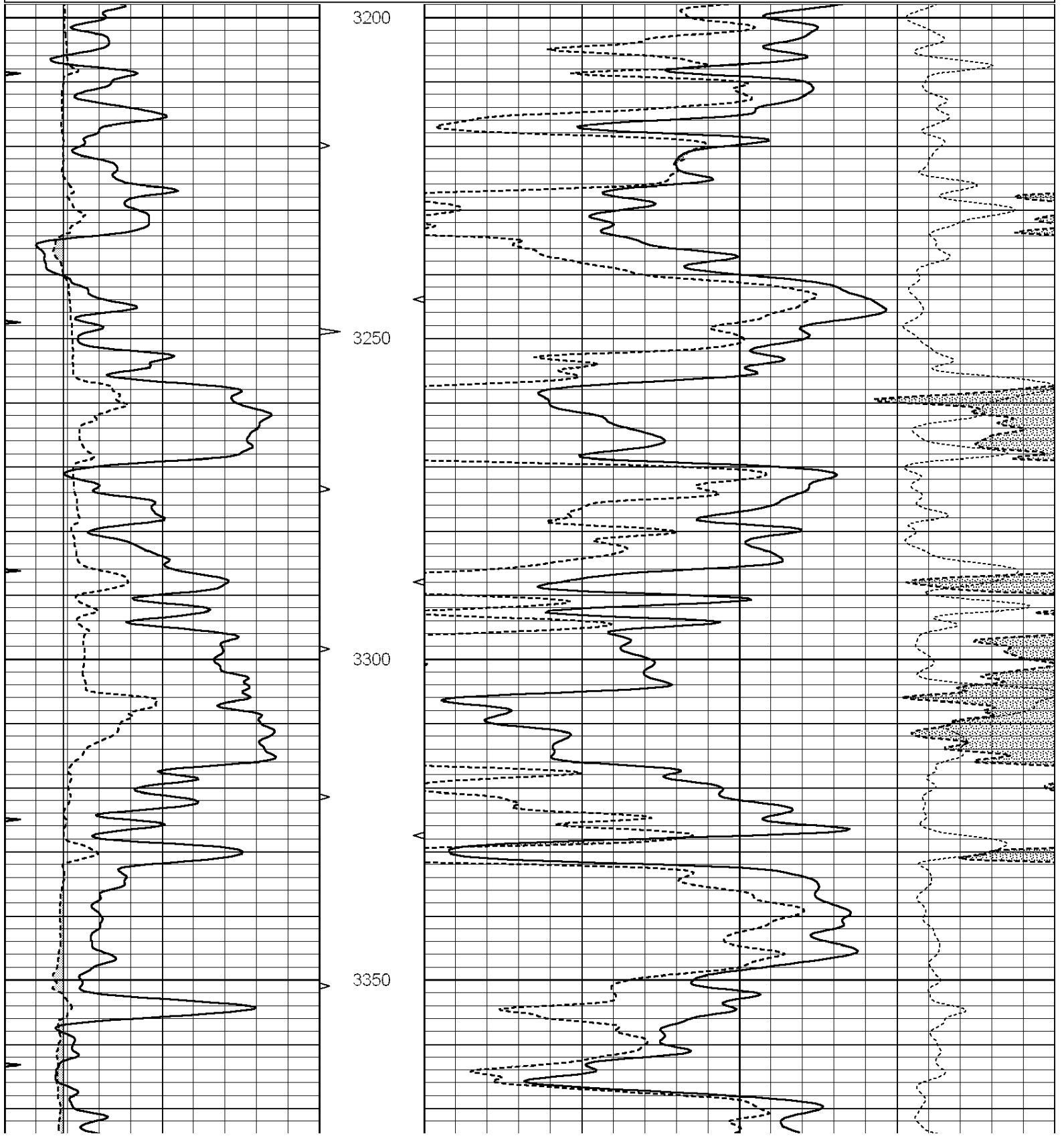
THANK YOU FOR USING ELI WIRELINE HAYS, KANSAS (785) 628-6395
DIRECTIONS
OGALLAH & I-70, 10S. ON HWY 147 TO "T RD.", 3/4E., S. INTO

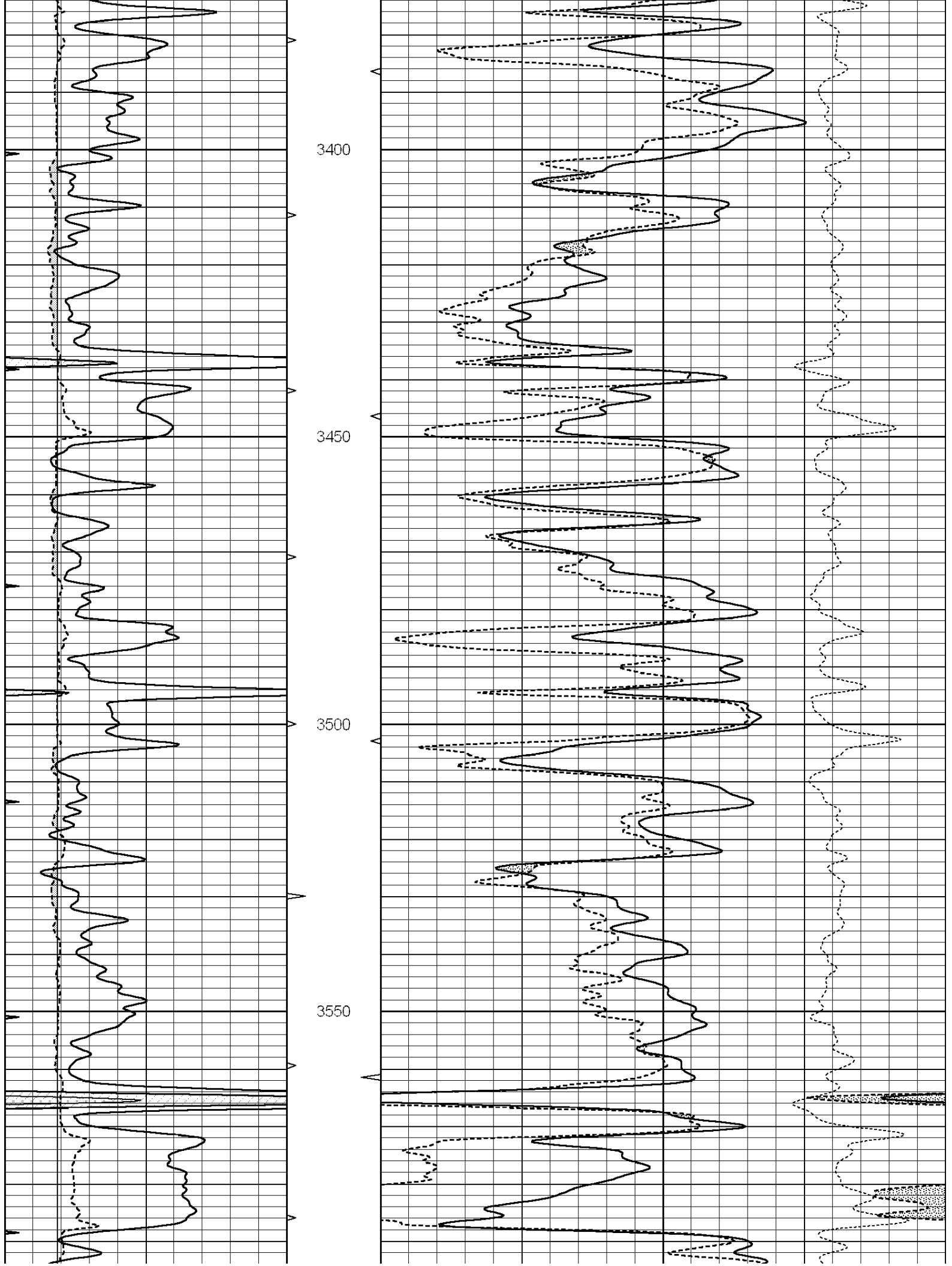


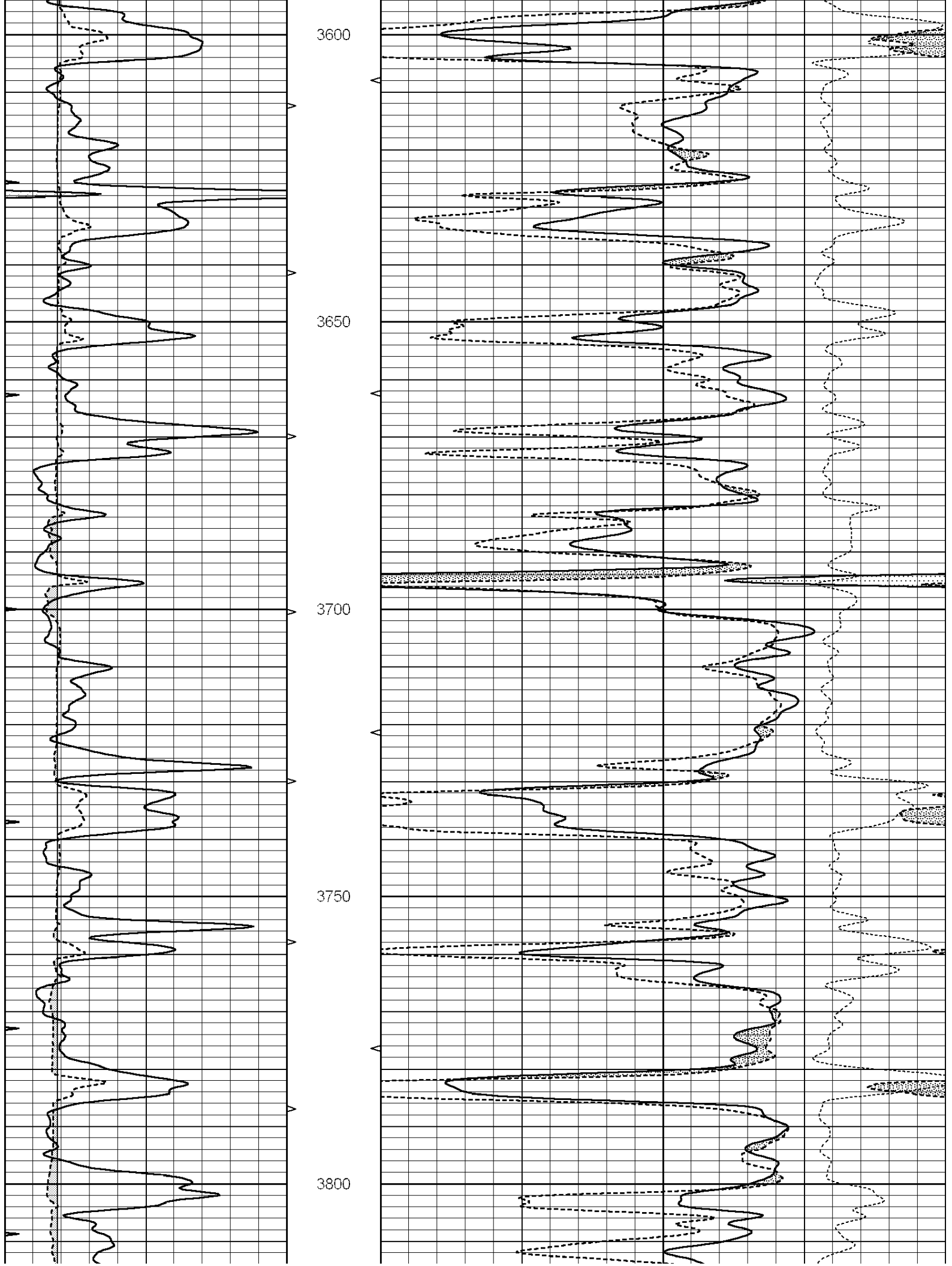
MAIN SECTION

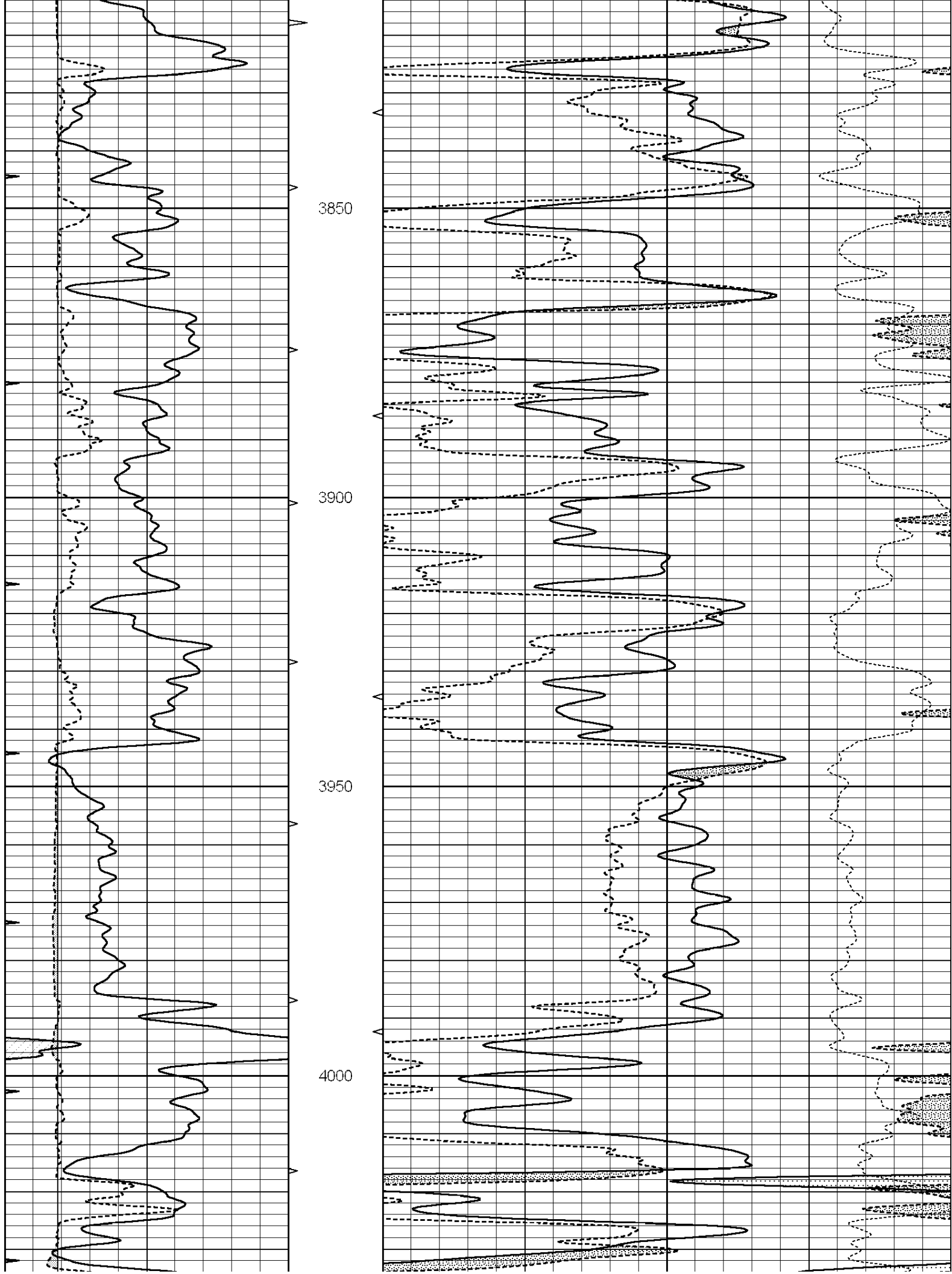
Database File: 4527ddn.db
 Dataset Pathname: pass3.7
 Presentation Format: den_neu
 Dataset Creation: Wed Jan 29 11:42:04 2020
 Charted by: Depth in Feet scaled 1:240

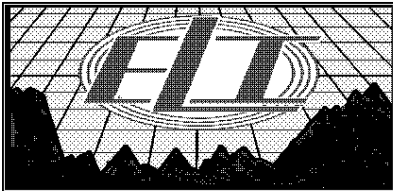
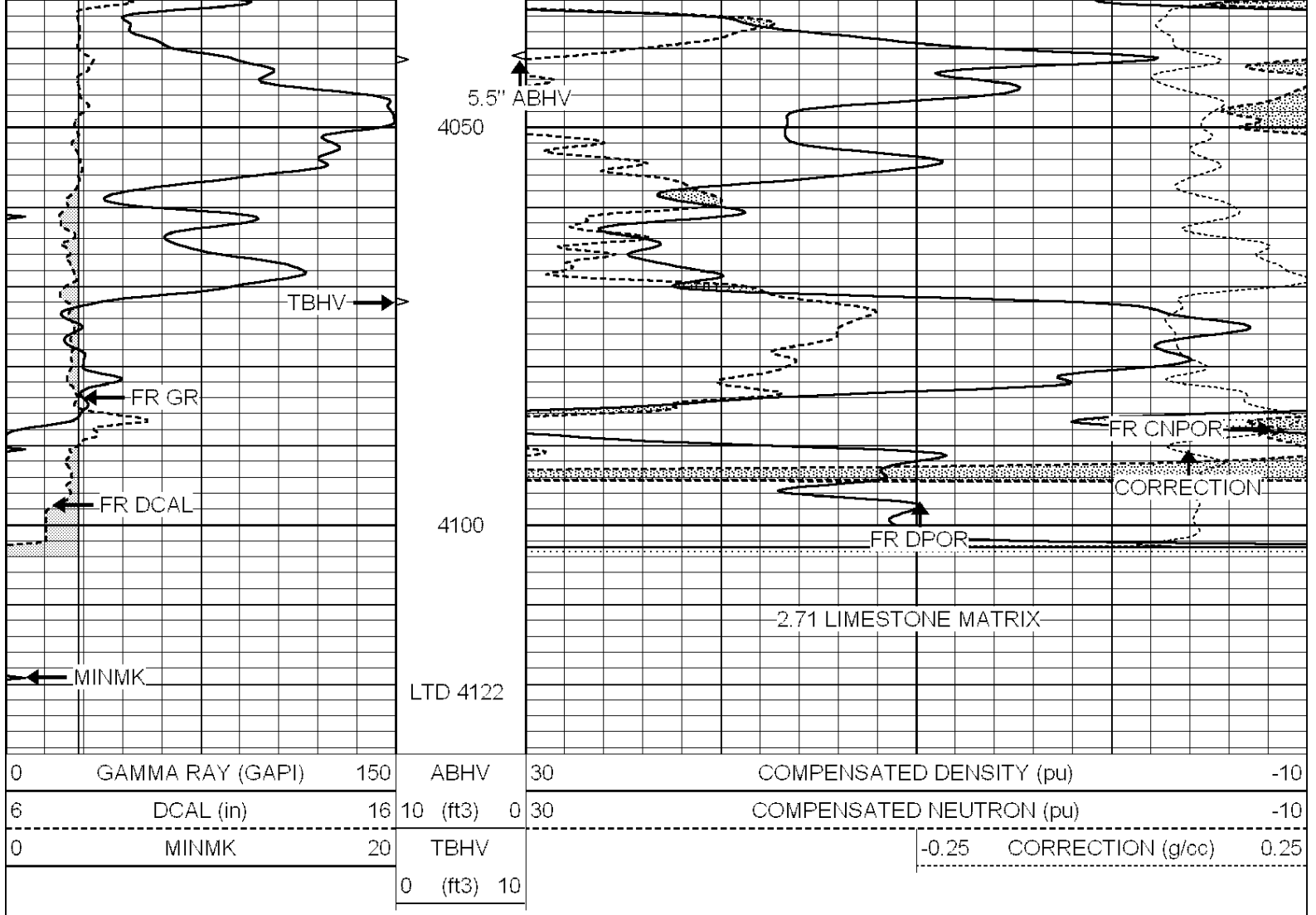
0	GAMMA RAY (GAPI)	150	ABHV	30	COMPENSATED DENSITY (pu)	-10
6	DCAL (in)	16	10 (ft3)	0 30	COMPENSATED NEUTRON (pu)	-10
0	MINMK	20	TBHV		-0.25 CORRECTION (g/cc)	0.25
			0 (ft3)	10		







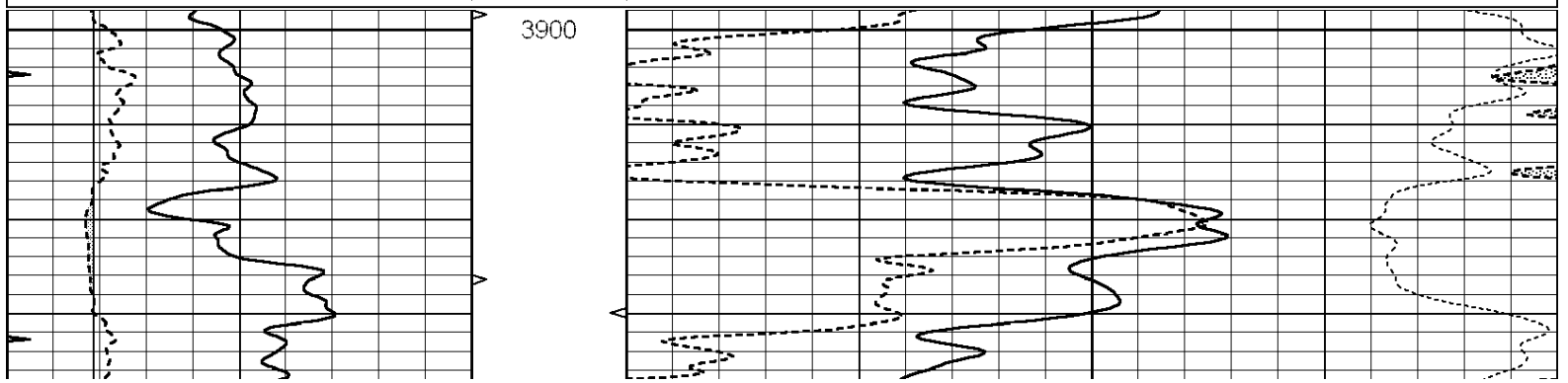


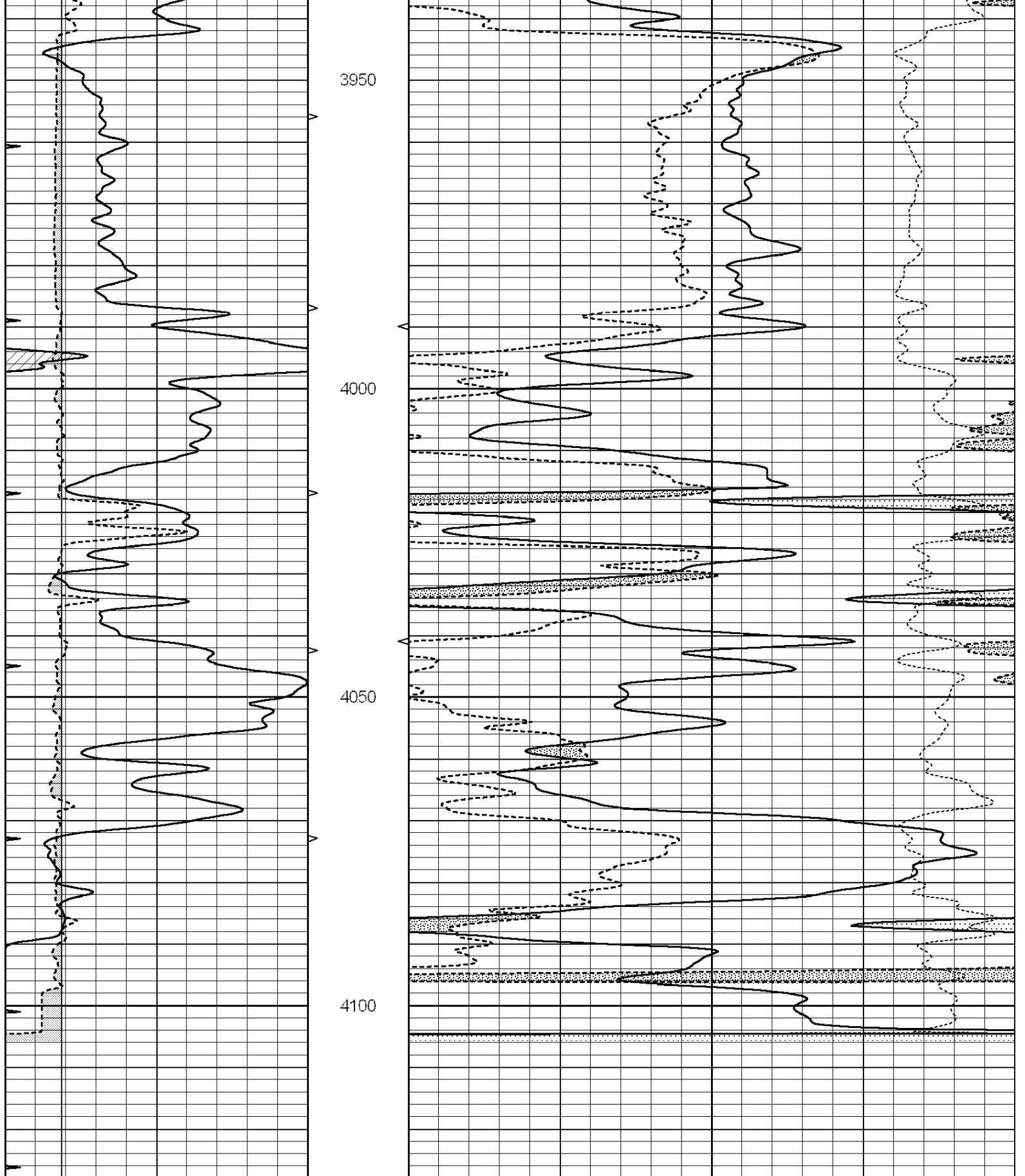


REPEAT SECTION

Database File: 4527ddn.db
 Dataset Pathname: pass2.4
 Presentation Format: den_neu
 Dataset Creation: Wed Jan 29 11:38:07 2020 by Calc SOC 120430
 Charted by: Depth in Feet scaled 1:240

0	GAMMA RAY (GAPI)	150	ABHV	30	COMPENSATED DENSITY (pu)	-10
6	DCAL (in)	16	10 (ft3)	0 30	COMPENSATED NEUTRON (pu)	-10
0	MINMK	20	TBHV		-0.25	CORRECTION (g/cc) 0.25
			0 (ft3)	10		





0	GAMMA RAY (GAPI)	150	ABHV	30	COMPENSATED DENSITY (pu)	-10
6	DCAL (in)	16	10 (ft3)	0 30	COMPENSATED NEUTRON (pu)	-10
0	MINMK	20	TBHV		-0.25 CORRECTION (g/cc)	0.25
			0 (ft3)	10		

Database File: 1598ddn.db
 Dataset Pathname: pass4
 Dataset Creation: Wed Aug 30 02:13:00 2017 by Log SOC 120430

Dual Induction Calibration Report

Serial-Model: PROBE7-DILG
 Surface Cal Performed: Wed Aug 30 00:06:33 2017
 Downhole Cal Performed: Mon Jul 28 12:02:56 2008
 After Survey Verification Performed: Mon Jul 28 12:02:56 2008

Surface Calibration

Loop:	Readings			References			Results	
	Air	Loop		Air	Loop		m	b
Deep	-0.014	0.629	V	0.000	400.000	mmho/m	620.000	0.000
Medium	0.039	0.728	V	0.000	464.000	mmho/m	675.000	-44.000
Internal:	Zero	Cal		Zero	Cal		m	b
Deep	0.011	0.610	V	0.000	400.000	mmho/m	667.135	-7.256
Medium	0.005	0.712	V	0.000	464.000	mmho/m	655.677	-3.102

Downhole Calibration

	Readings			References			Results	
	Zero	Cal		Zero	Cal		m'	b'
Deep	0.000	0.000	mmho/m	14.508	388.384	mmho/m	1.000	0.000
Medium	0.000	0.000	mmho/m	166.367	504.400	mmho/m	1.000	0.000
LL3		7.500	V		1400.000	Ohm-m		
		0.000	V		20.000	Ohm-m		
		-7.200	V		4000.000	mmho-m		

After Survey Verification

	Readings			Targets			Results	
	Zero	Cal		Zero	Cal		m'	b'
Deep	0.000	0.000	mmho/m	0.000	0.000	mmho/m	0.000	0.000
Medium	0.000	0.000	mmho/m	0.000	0.000	mmho/m	0.000	0.000
LL3		1.000	Ohm-m		1.000	Ohm-m		
		0.000	Ohm-m		0.000	Ohm-m		
		1.000	mmho-m		1.000	mmho-m		

Litho Density Calibration Report
 Serial: 002 Model: PRB

Master Calibration

Performed Mon Aug 21 11:27:42 2017

	Background	Magnesium	Aluminum	Sandstone	
Window 1	837.1	10632.5	2945.1	12110.1	cps
Window 2	772.0	9117.4	2570.1	10197.3	cps
Window 3	631.7	4669.0	1481.9	5042.9	cps
Window 4	187.0	187.5	185.9	189.9	cps
Long Space	0.0	8345.4	1798.1	9425.3	cps
Short Space	1.1	1927.9	1285.9	2050.2	cps
Rho		1.7100	2.5960	1.3800	g/cc
Pe		0.0000	2.5700	1.5500	
Rib Angle	: 45.2	Rib Slope	: 1.008	Density/Spine Ratio	: 0.558
Spine Angle	: 75.2	Spine Slope	: 3.790	Spine Intercept	: -19.6

Before Survey Verification

Performed Wed Dec 31 18:00:00 1969

Window 1	0.0	0.0	0.0	0.0	cps
Window 2	0.0	0.0	0.0	0.0	cps
Window 3	0.0	0.0	0.0	0.0	cps
Window 4	0.0	0.0	0.0	0.0	cps
Long Space	0.0	0.0	0.0	0.0	cps
Short Space	0.0	0.0	0.0	0.0	cps
Measured Rho		0.0000	0.0000	0.0000	g/cc
Measured Correction		0.0000	0.0000	0.0000	g/cc
Measured Pe			0.0000	0.0000	

After Survey Verification

Performed Wed Dec 31 18:00:00 1969

Window 1	0.0	0.0	0.0	0.0	cps
Window 2	0.0	0.0	0.0	0.0	cps
Window 3	0.0	0.0	0.0	0.0	cps
Window 4	0.0	0.0	0.0	0.0	cps
Long Space	0.0	0.0	0.0	0.0	cps
Short Space	0.0	0.0	0.0	0.0	cps
Measured Rho		0.0000	0.0000	0.0000	g/cc
Measured Correction		0.0000	0.0000	0.0000	g/cc
Measured Pe			0.0000	0.0000	

Compensated Neutron Calibration Report

Serial Number: 070808
Tool Model: Probe

PRE-SURVEY VERIFICATION

Detector	Readings	Measured	Target
Short Space	cps		
Long Space	cps	pu	pu

POST-SURVEY VERIFICATION

Detector	Readings	Measured	Target
Short Space	cps		
Long Space	cps	pu	pu

Gamma Ray Calibration Report

Serial Number: 070558
Tool Model: OPEN_GR
Performed: Wed May 31 00:09:32 2017

Calibrator Value: 1.0 GAPI

Background Reading: 0.0 cps
Calibrator Reading: 1.0 cps

Sensitivity: 0.2800 GAPI/cps