



DUAL INDUCTION LOG

Company REILLY OIL COMPANY, INC.
 Well LeCUYER #1
 Field CEDAR VIEW SOUTHEAST
 County TREGO
 State KANSAS

Company REILLY OIL COMPANY, INC.
 Well LeCUYER #1
 Field CEDAR VIEW SOUTHEAST
 County TREGO State KANSAS

Location: API # : 15-195-23099-0000
 627' FNL & 1050' FEL
 SW - NW - NE - NE
 Permanent Datum GROUND LEVEL Elevation 2244
 Log Measured From KELLY BUSHING 7' A.G.L.
 Drilling Measured From KELLY BUSHING
 SEC 12 TWP 14S RGE 22W
 Other Services CDL/CNL MEL
 Elevation K.B. 2251 D.F. 2249 G.L. 2244

Date	1/29/20		
Run Number	ONE		
Depth Driller	4124		
Depth Logger	4122		
Bottom Logged Interval	4120		
Top Log Interval	00		
Casing Driller	8 5/8" @ 222'		
Casing Logger	222		
Bit Size	7 7/8"		
Type Fluid in Hole	CHEMICAL MUD	CHLORIDES 5,900 PPM	
Density / Viscosity	9.3/59		
pH / Fluid Loss	11.0/7.6		
Source of Sample	FLOWLINE		
Rim @ Meas. Temp	.550 @ 70F		
Rmf @ Meas. Temp	.413 @ 70F		
Rmc @ Meas. Temp	.660 @ 70F		
Source of Rmf / Rmc	MEASUREMENT		
Rim @ BHT	.329 @ 117F		
Time Circulation Stopped	2 HOURS		
Time Logger on Bottom	10:30 A.M.		
Maximum Recorded Temperature	117F		
Equipment Number	922339		
Location	HAYS, KANSAS		
Recorded By	JEFF LUEBBERS		
Witnessed By	RICHARD BELL		

<<< Fold Here >>>

All interpretations are opinions based on inferences from electrical or other measurements and we cannot and do not guarantee the accuracy or correctness of any interpretation, and we shall not, except in the case of gross or willful negligence on our part, be liable or responsible for any loss, costs, damages, or expenses incurred or sustained by anyone resulting from any interpretation made by any of our officers, agents or employees. These interpretations are also subject to our general terms and conditions set out in our current Price Schedule.

Comments

THANK YOU FOR USING ELI WIRELINE HAYS, KANSAS (785) 628-6395
 DIRECTIONS
 OGALLAH & I-70, 10S. ON HWY 147 TO "T RD.", 3/4E., S. INTO



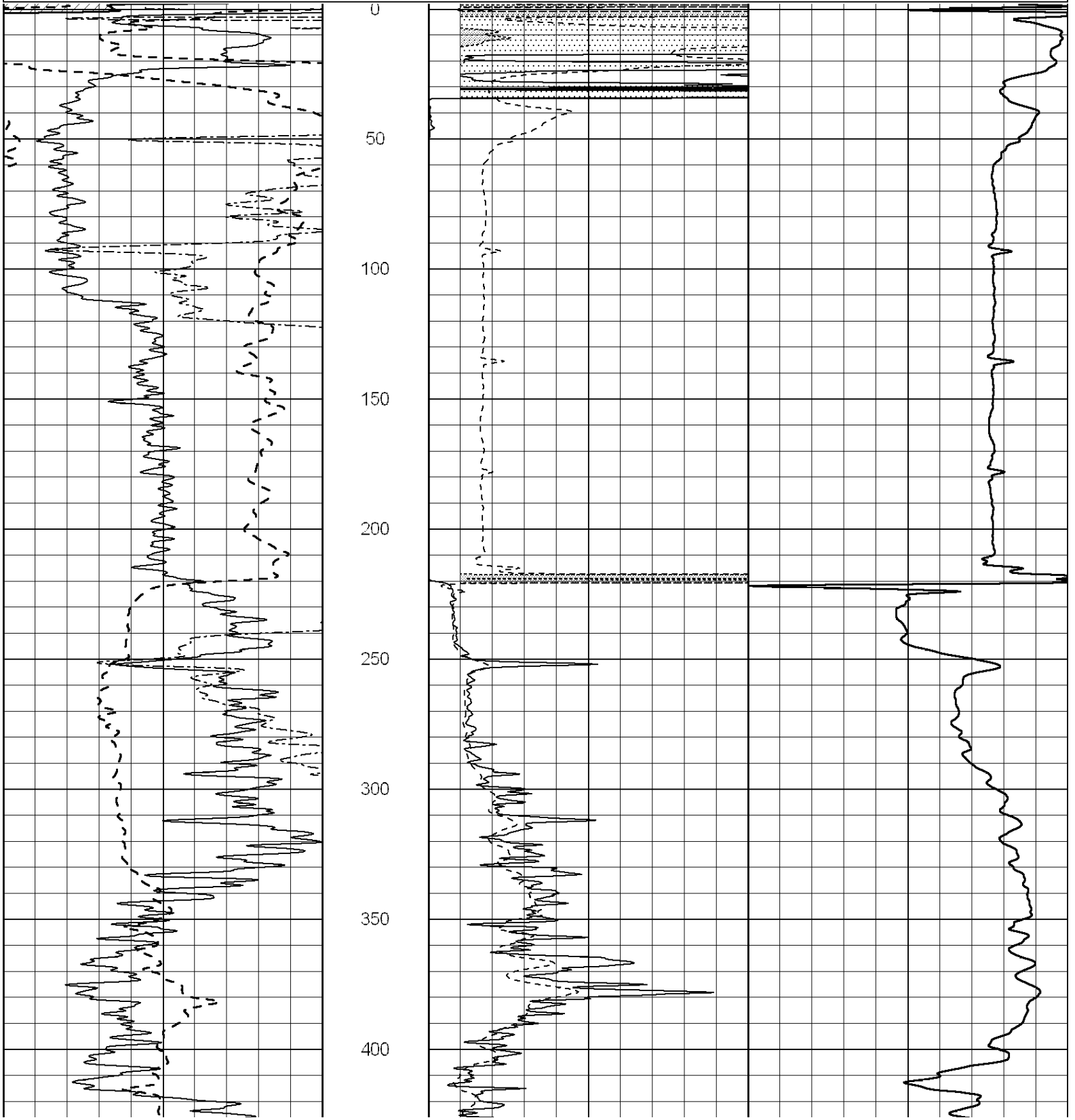
MAIN SECTION

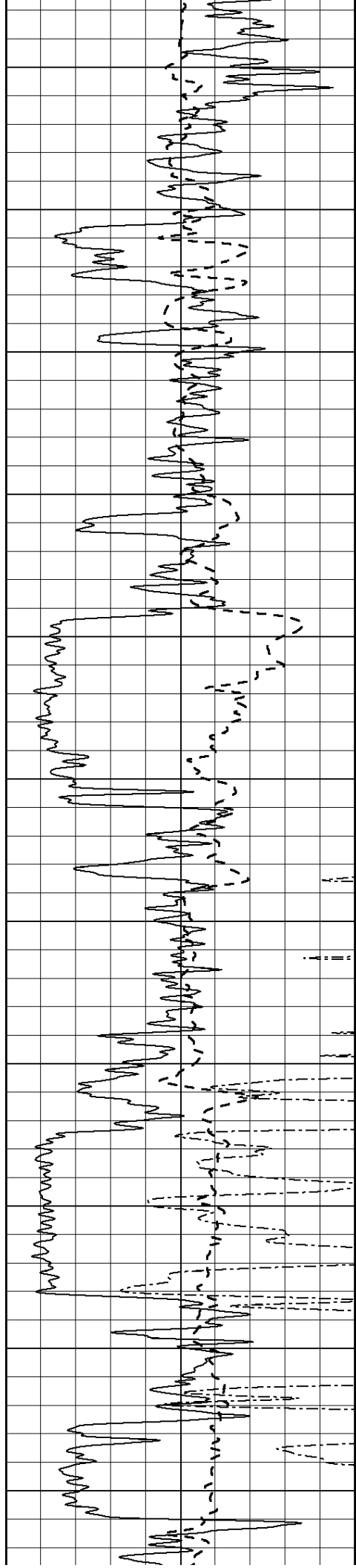
Database File: 4527ddn.db
 Dataset Pathname: pass3.7
 Presentation Format: dil2
 Dataset Creation: Wed Jan 29 11:42:04 2020
 Charted by: Depth in Feet scaled 1:600

0	Gamma Ray (GAPI)	150
-100	SP (mV)	100
0	RWA (Ohm-m)	1

0	RLL3 (Ohm-m)	50
0	RILD (Ohm-m)	50
1000	CILD (mmho/m)	0

50	RILD X10 (Ohm-m)	500
50	RLL3 X10 (Ohm-m)	500





450

500

550

600

650

700

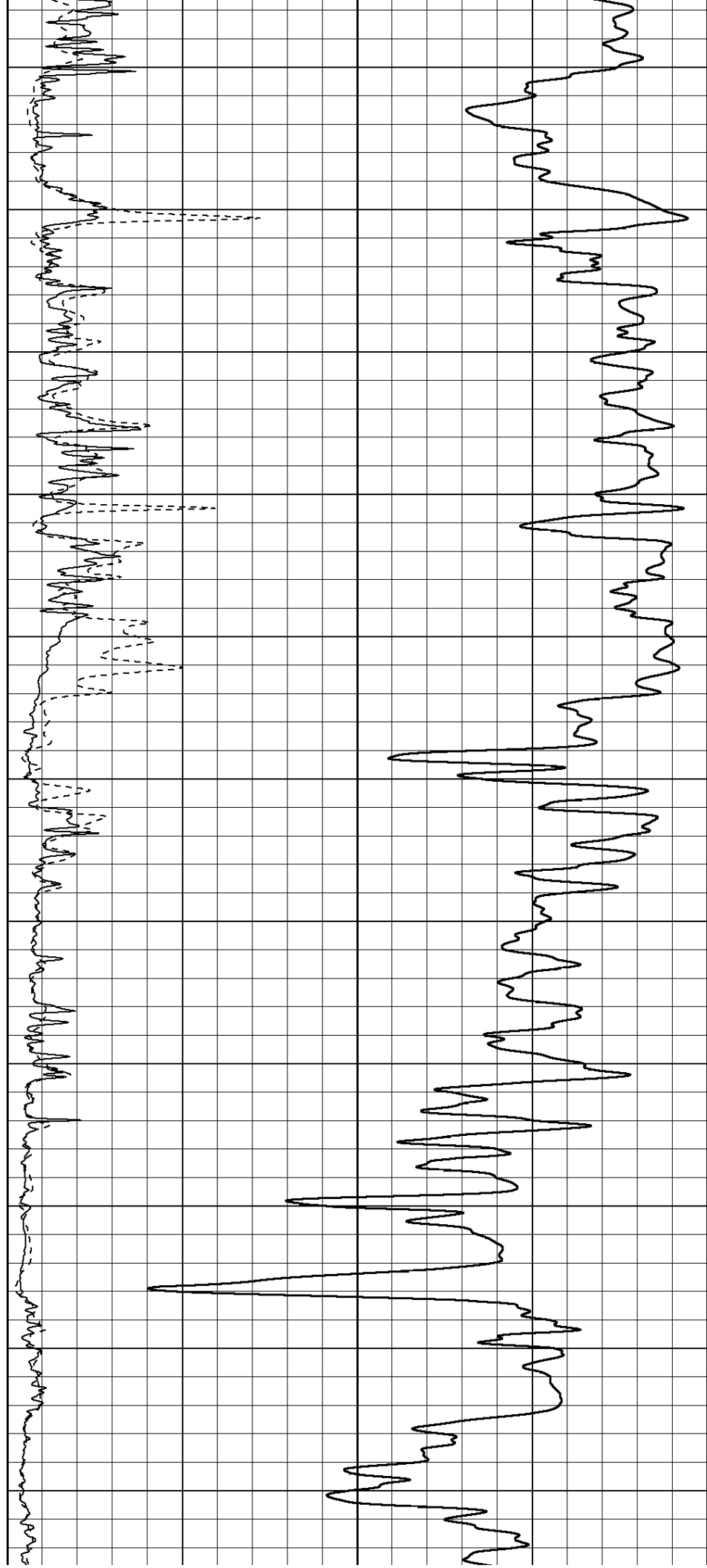
750

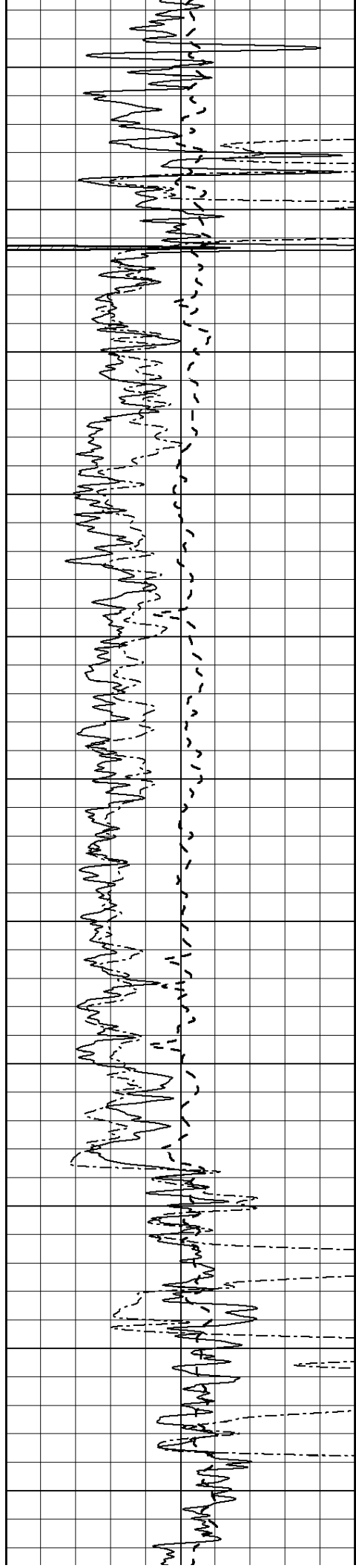
800

850

900

950





1000

1050

1100

1150

1200

1250

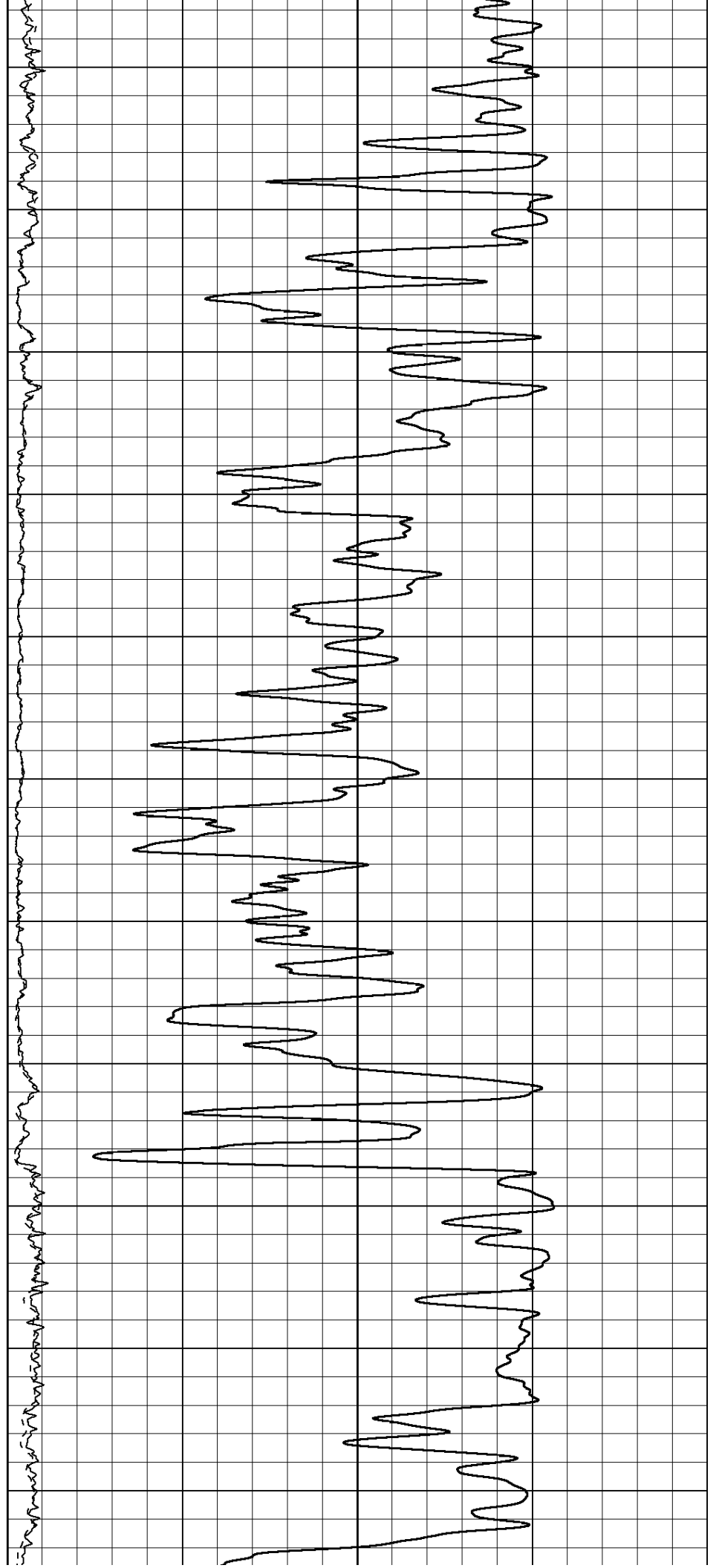
1300

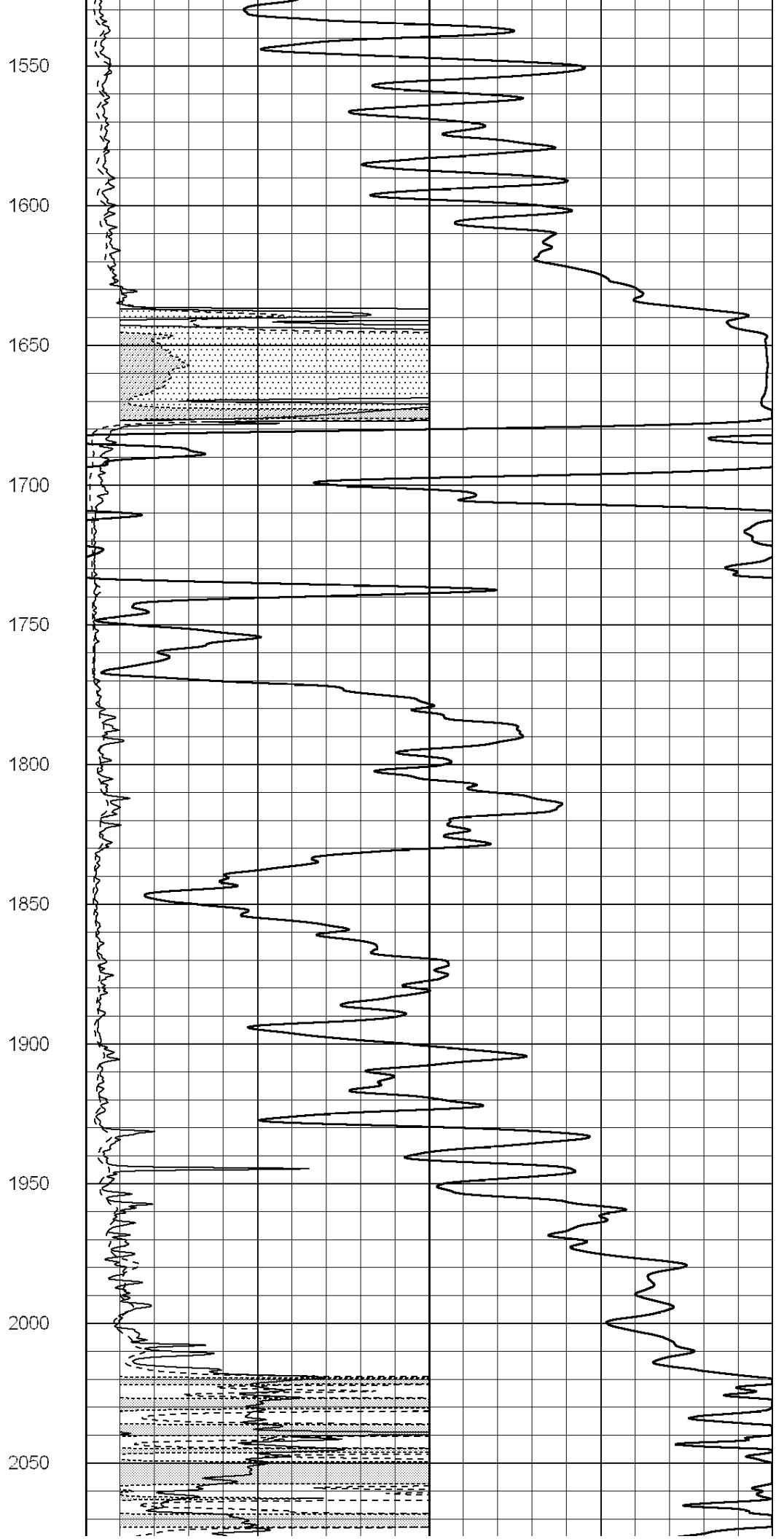
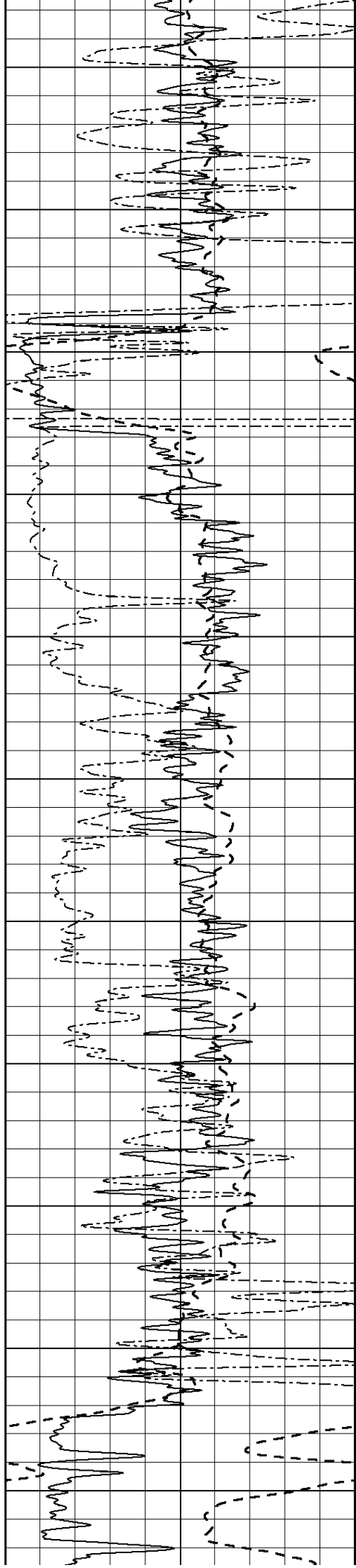
1350

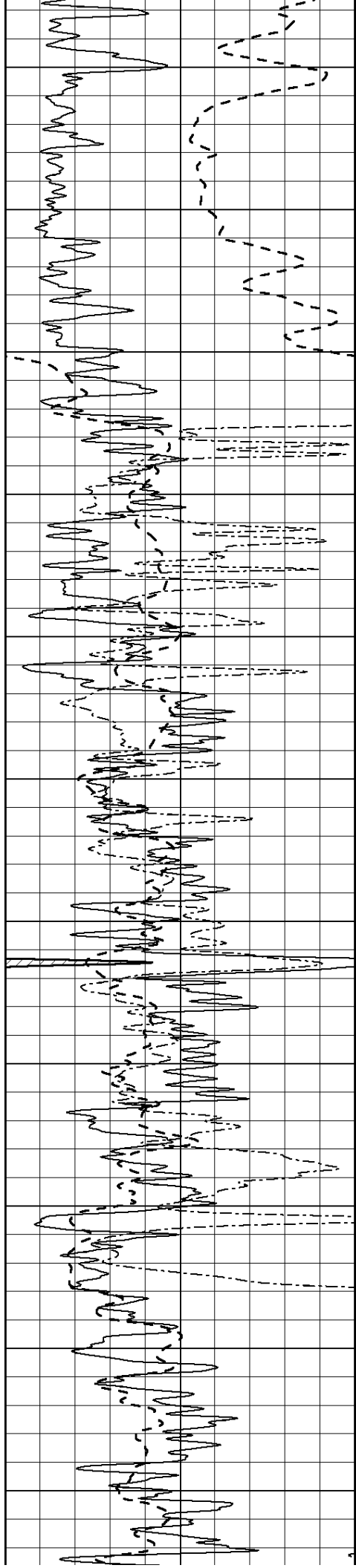
1400

1450

1500







2100

2150

2200

2250

2300

2350

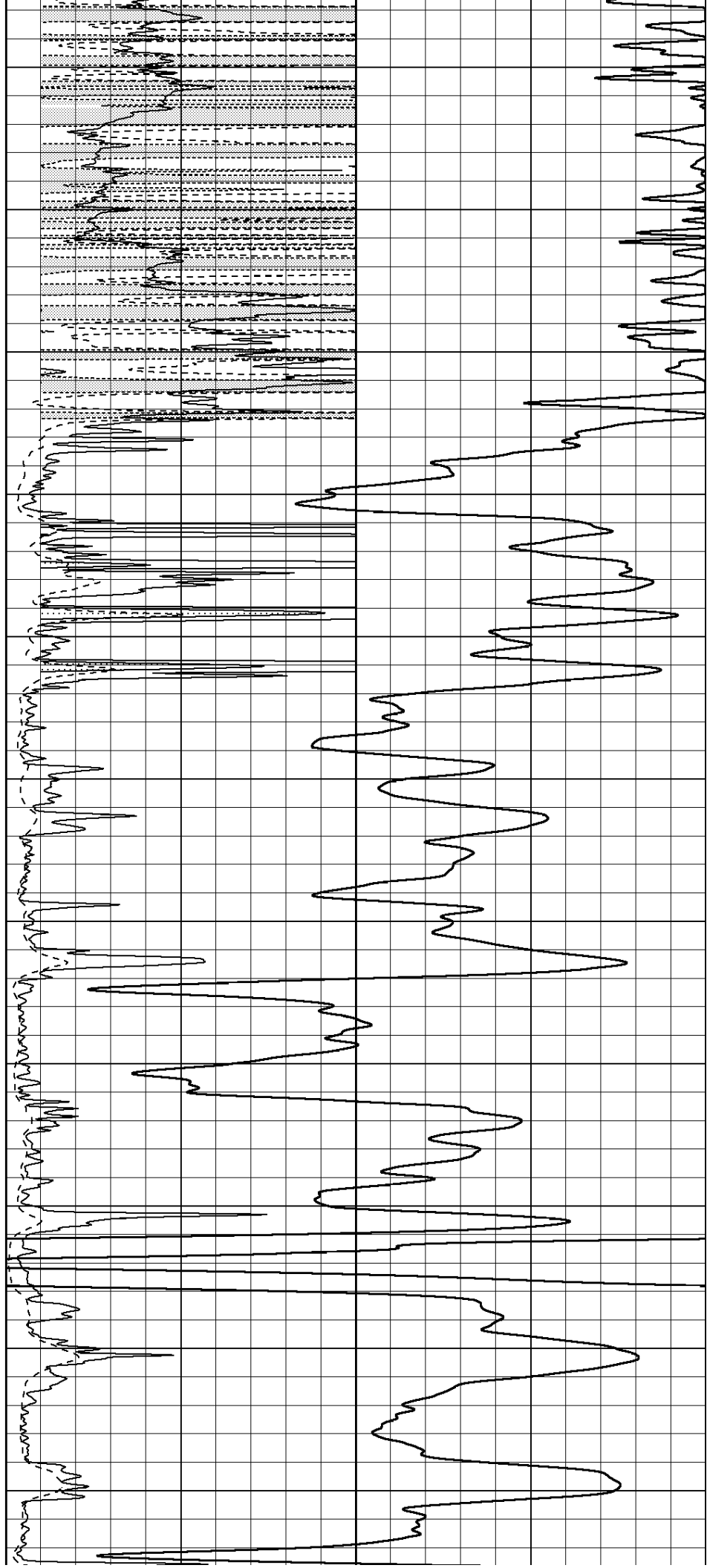
2400

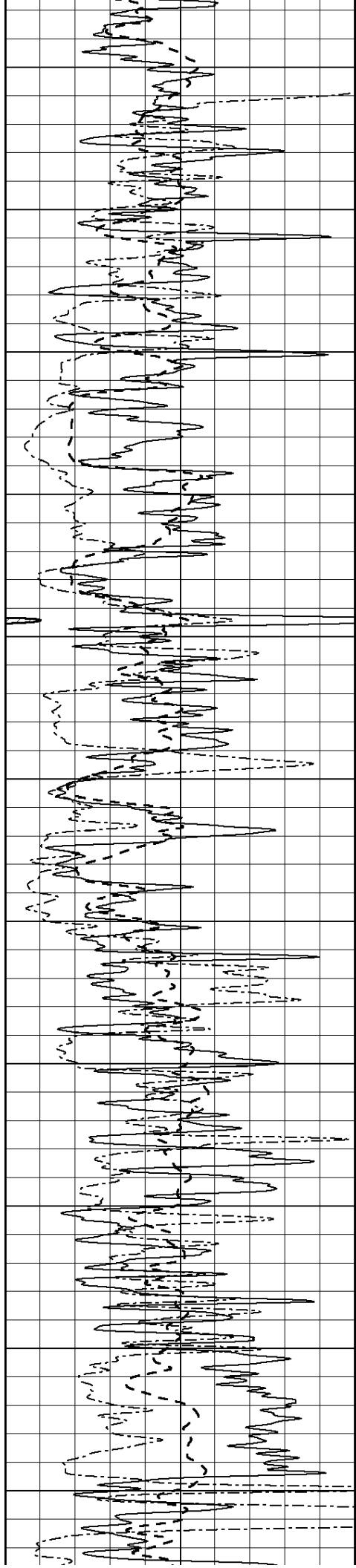
2450

2500

2550

2600





2650

2700

2750

2800

2850

2900

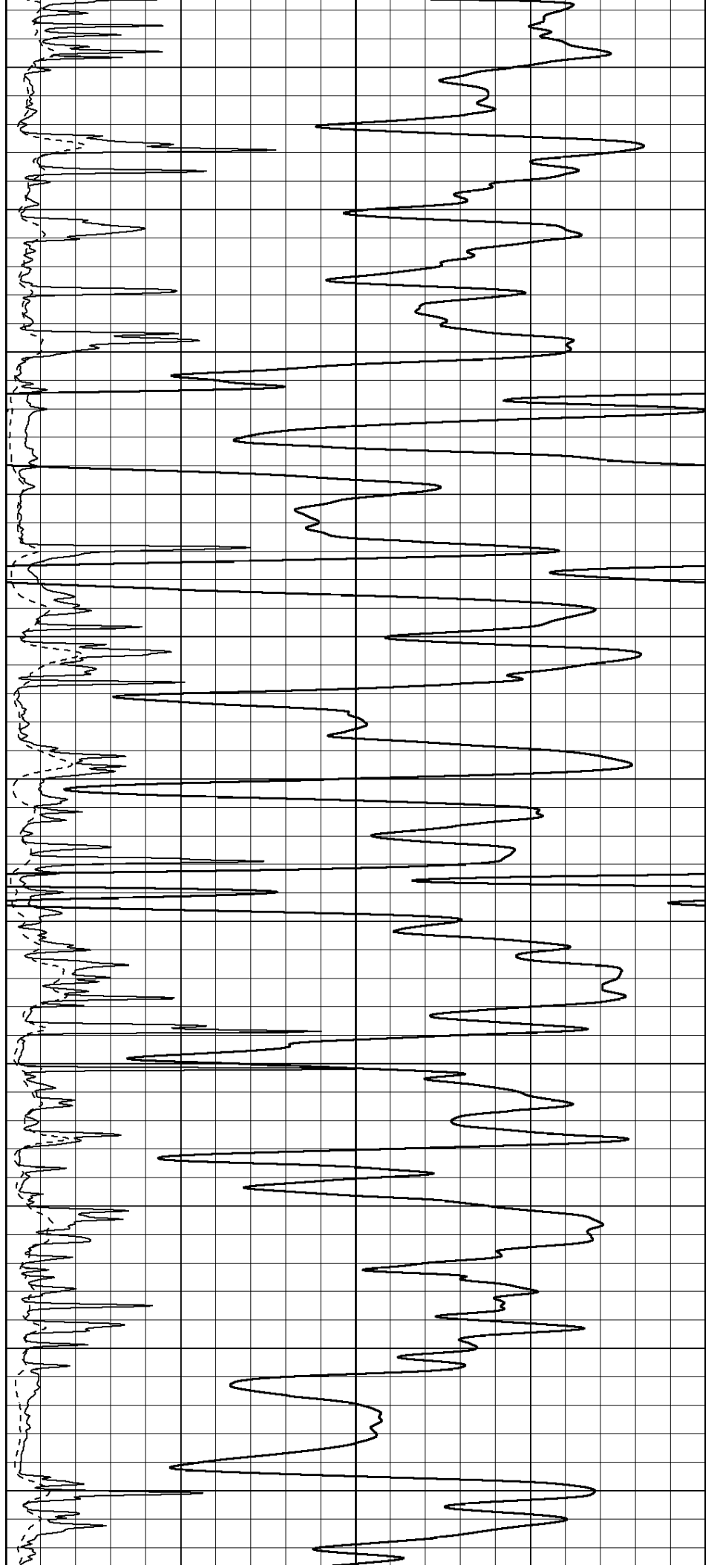
2950

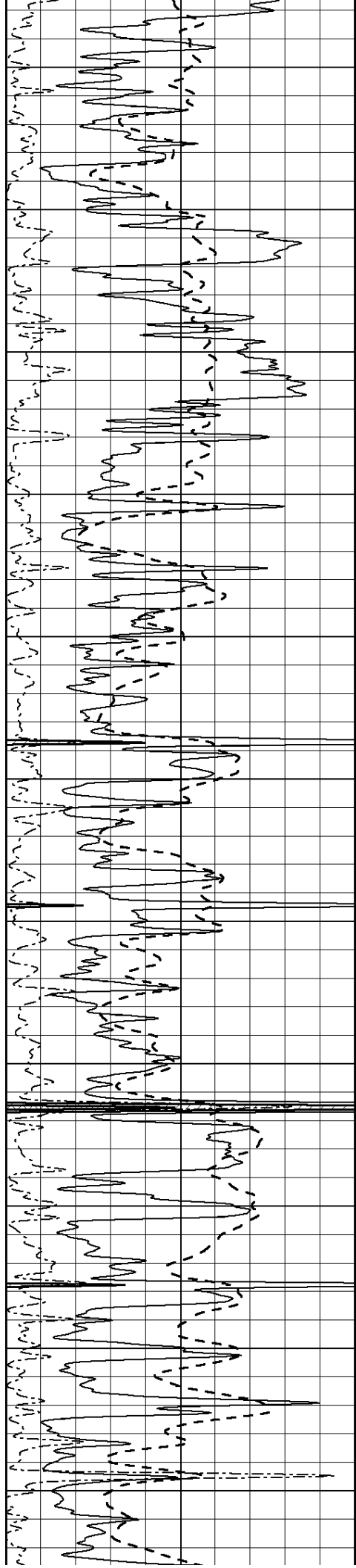
3000

3050

3100

3150





3200

3250

3300

3350

3400

3450

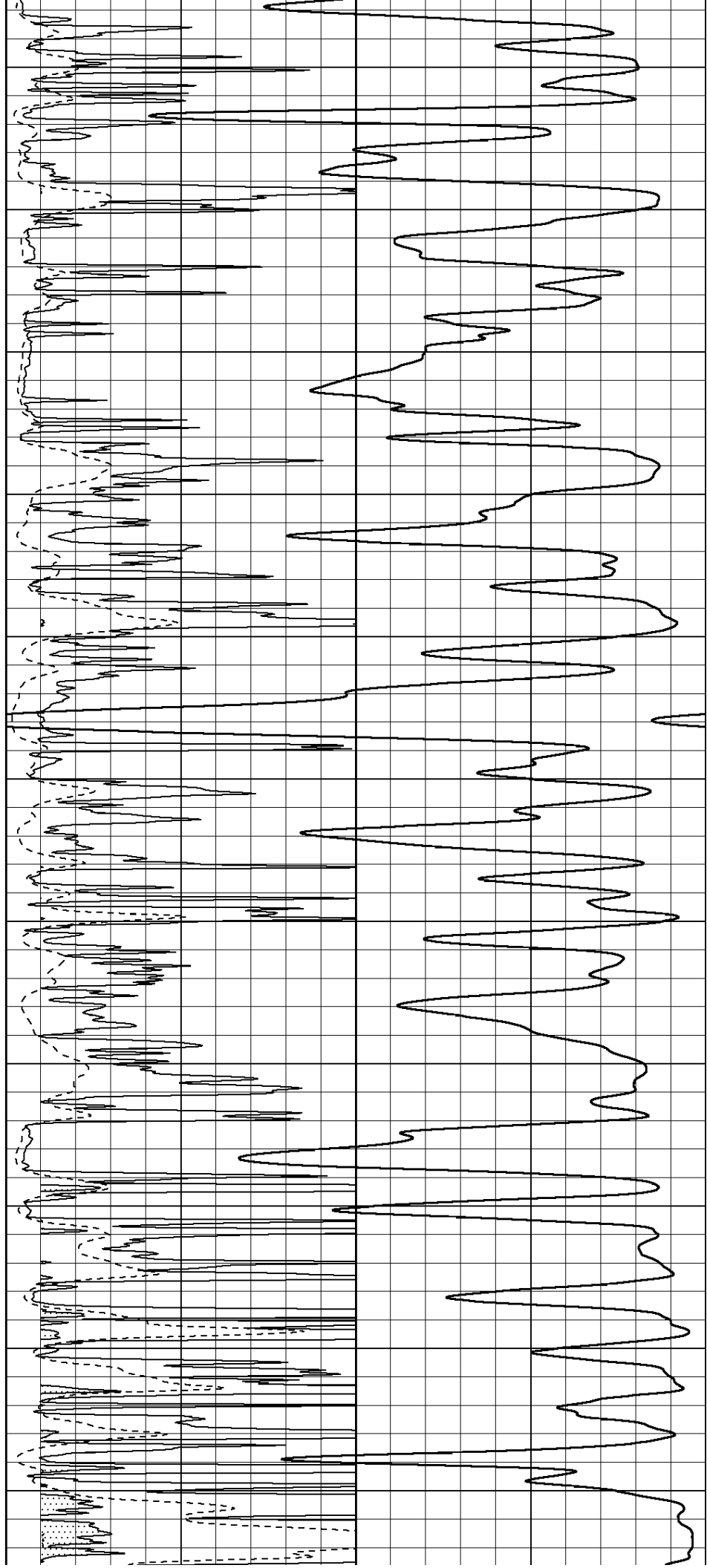
3500

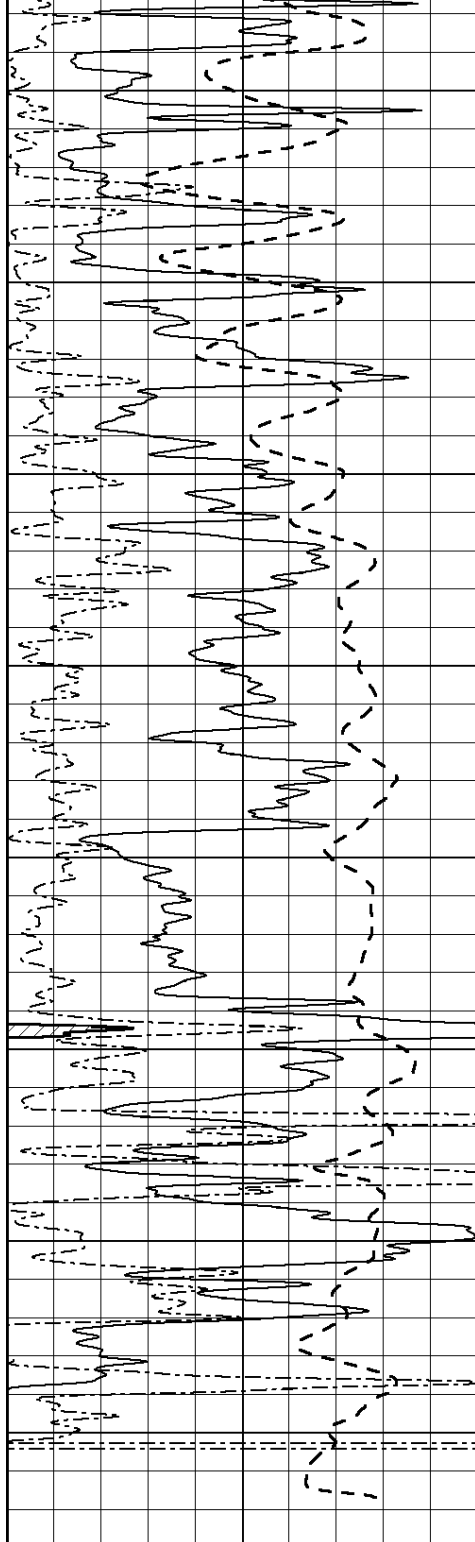
3550

3600

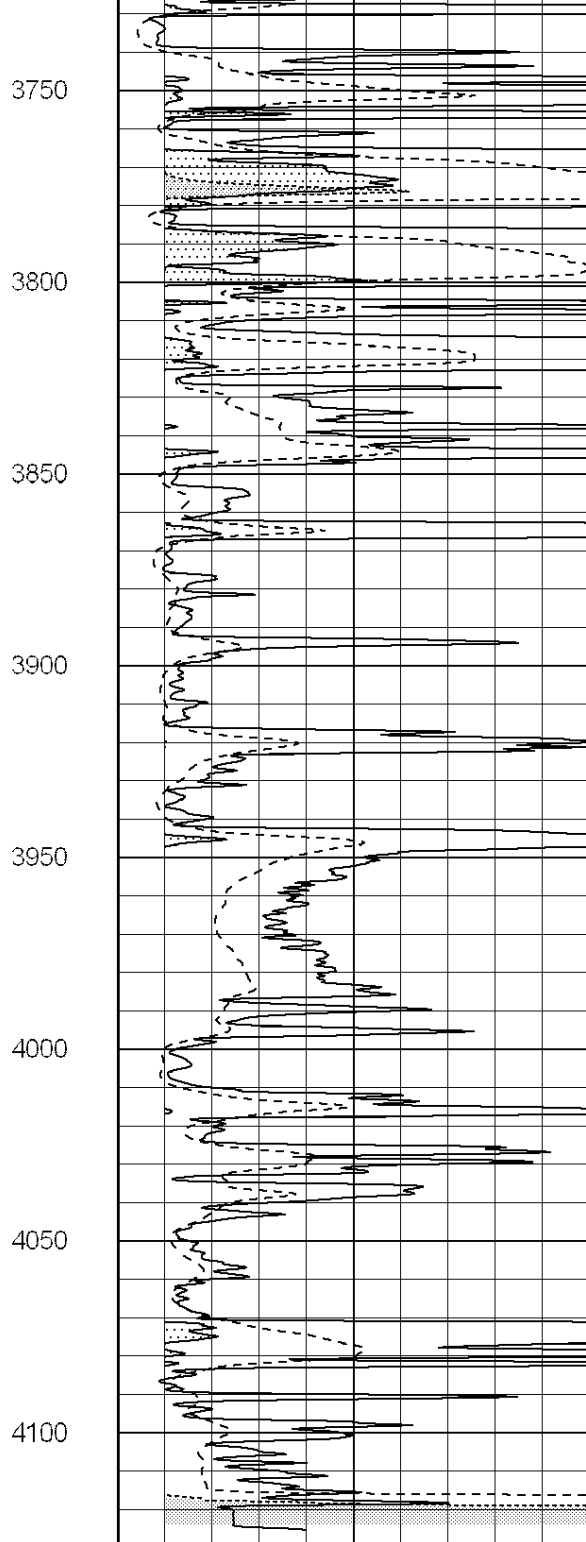
3650

3700

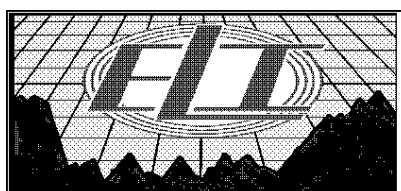
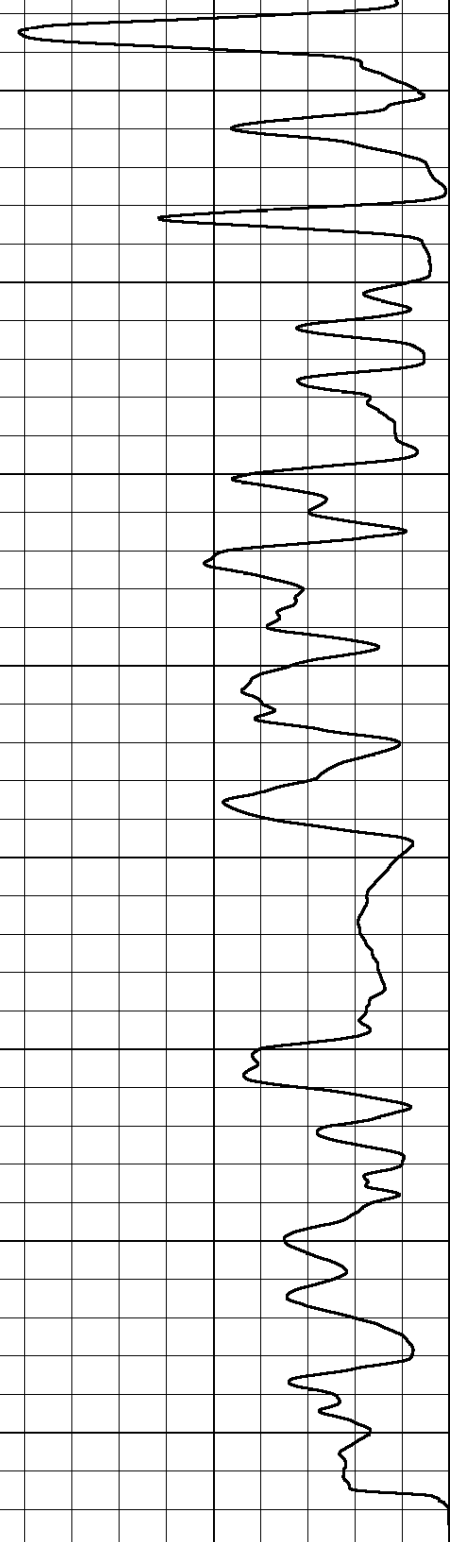




0	Gamma Ray (GAPI)	150
-100	SP (mV)	100
0	RWA (Ohm-m)	1



0	RLL3 (Ohm-m)	50
0	RILD (Ohm-m)	50
1000	CILD (mmho/m)	0
50	RILD X10 (Ohm-m)	500
50	RLL3 X10 (Ohm-m)	500

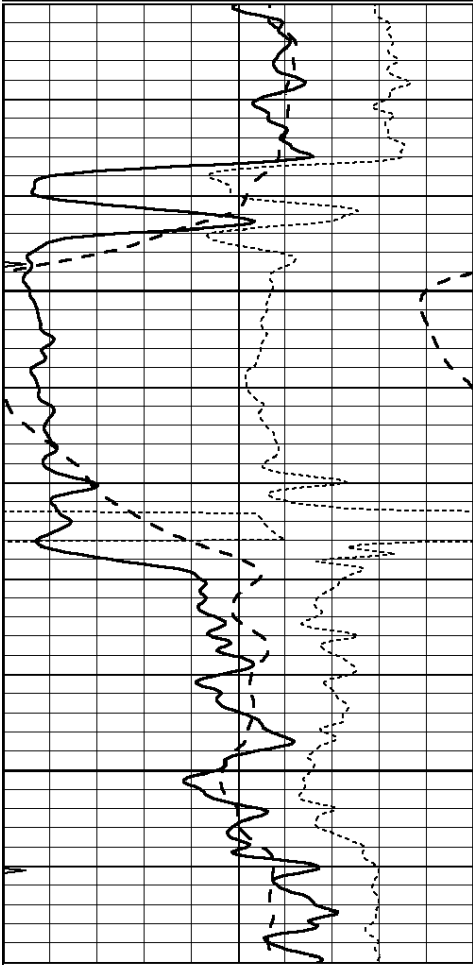


ANHYDRITE

Presentation Format: _dil
 Dataset Creation: Wed Jan 29 11:42:24 2020
 Charted by: Depth in Feet scaled 1:240

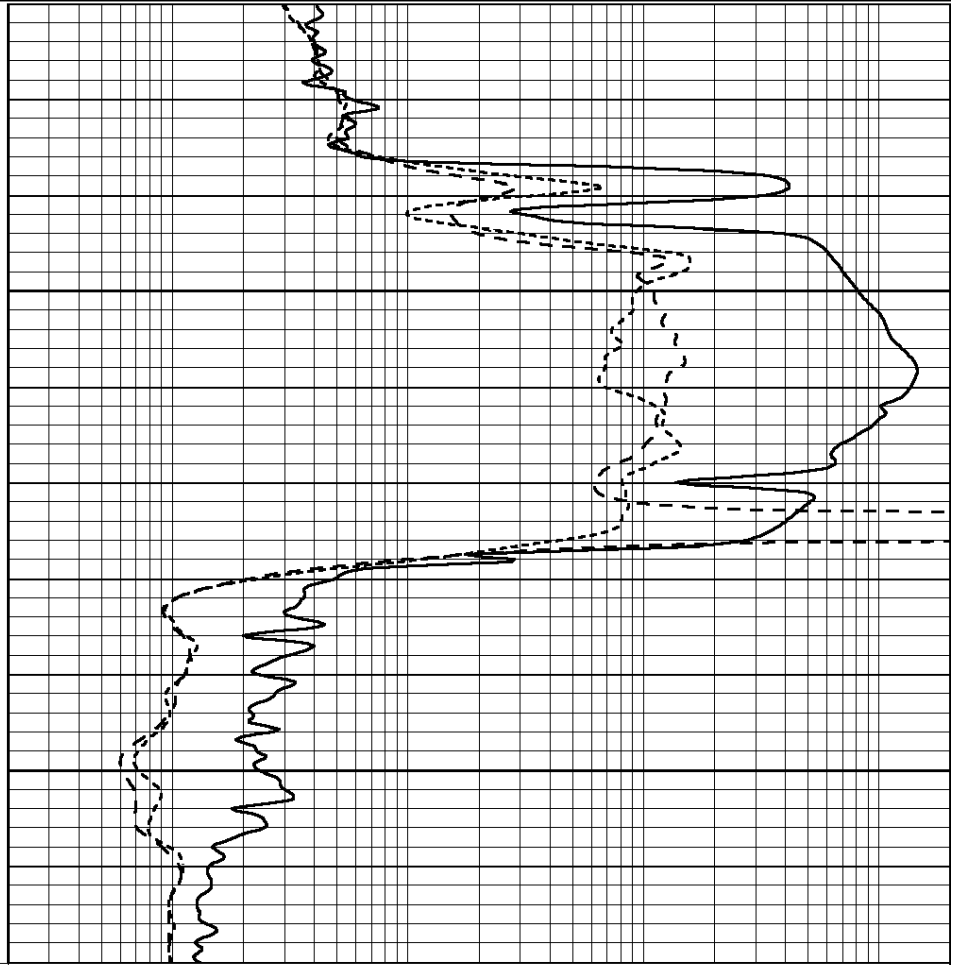
0	GAMMA RAY (GAPI)	150
-100	SP (mV)	100
-250	Rxo/Rt	50
0	MINMK	20

0.2	SHALLOW GUARD (Ohm-m)	2000
0.2	DEEP INDUCTION (Ohm-m)	2000
0.2	MEDIUM INDUCTION (Ohm-m)	2000



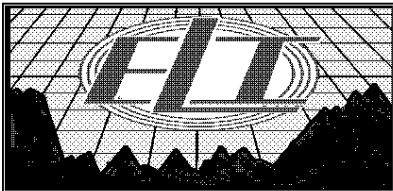
1650

1700



0	GAMMA RAY (GAPI)	150
-100	SP (mV)	100
-250	Rxo/Rt	50
0	MINMK	20

0.2	SHALLOW GUARD (Ohm-m)	2000
0.2	DEEP INDUCTION (Ohm-m)	2000
0.2	MEDIUM INDUCTION (Ohm-m)	2000

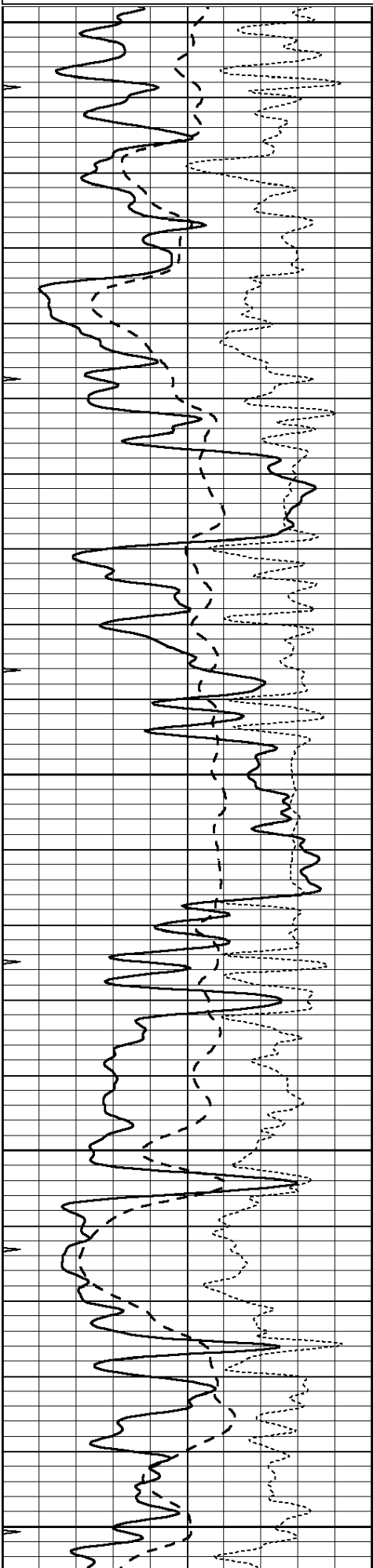


MAIN SECTION

Database File: 4527ddn.db
 Dataset Pathname: pass3.7
 Presentation Format: _dil
 Dataset Creation: Wed Jan 29 11:42:04 2020
 Charted by: Depth in Feet scaled 1:240

0	GAMMA RAY (GAPI)	150
-100	SP (mV)	100
-250	Rxo/Rt	50

0.2	SHALLOW GUARD (Ohm-m)	2000
0.2	DEEP INDUCTION (Ohm-m)	2000
0.2	MEDIUM INDUCTION (Ohm-m)	2000



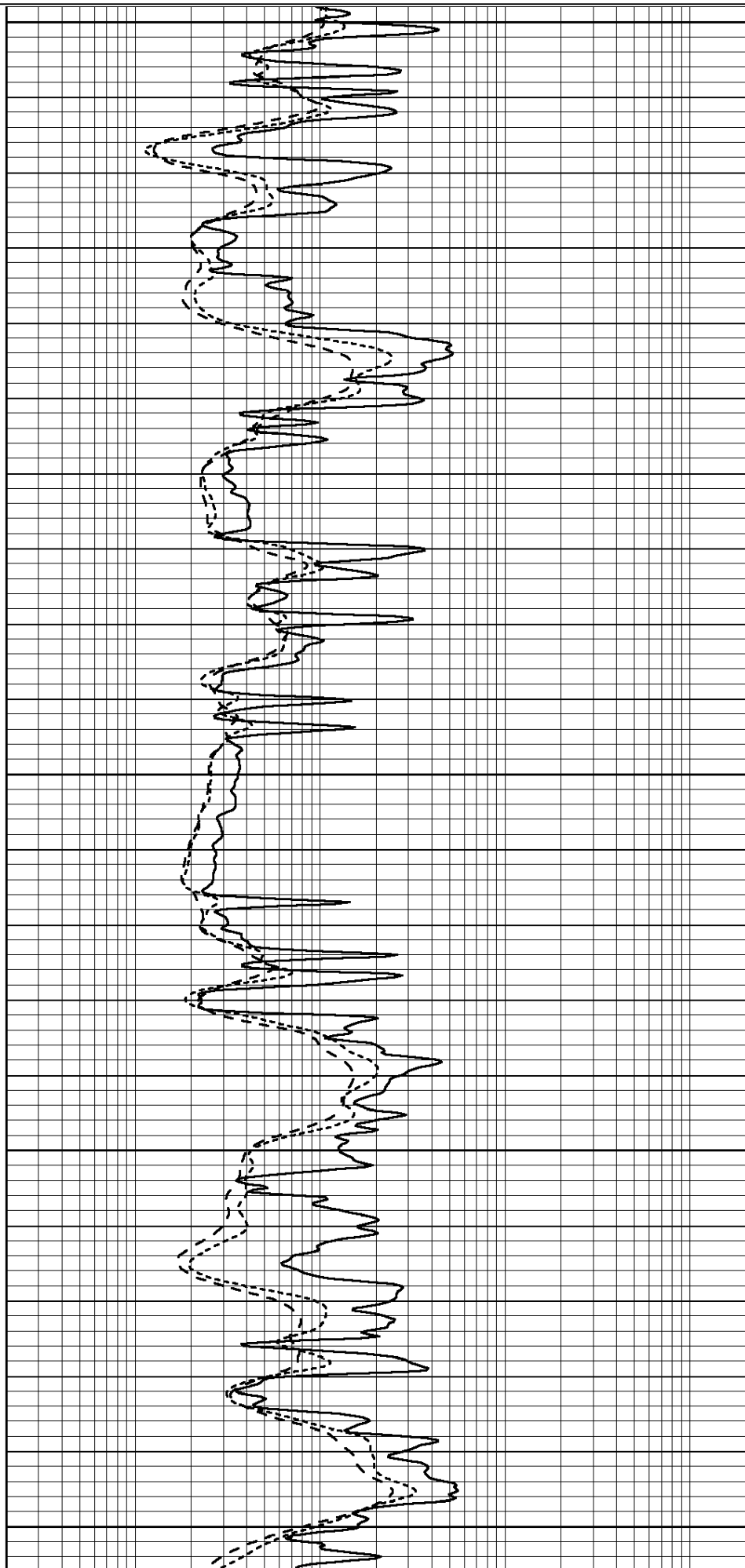
3200

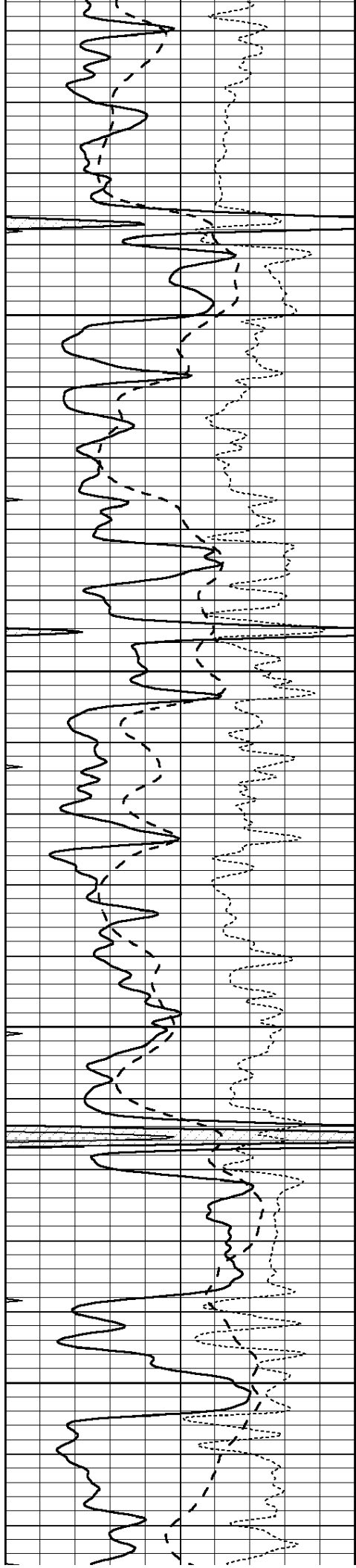
3250

3300

3350

3400



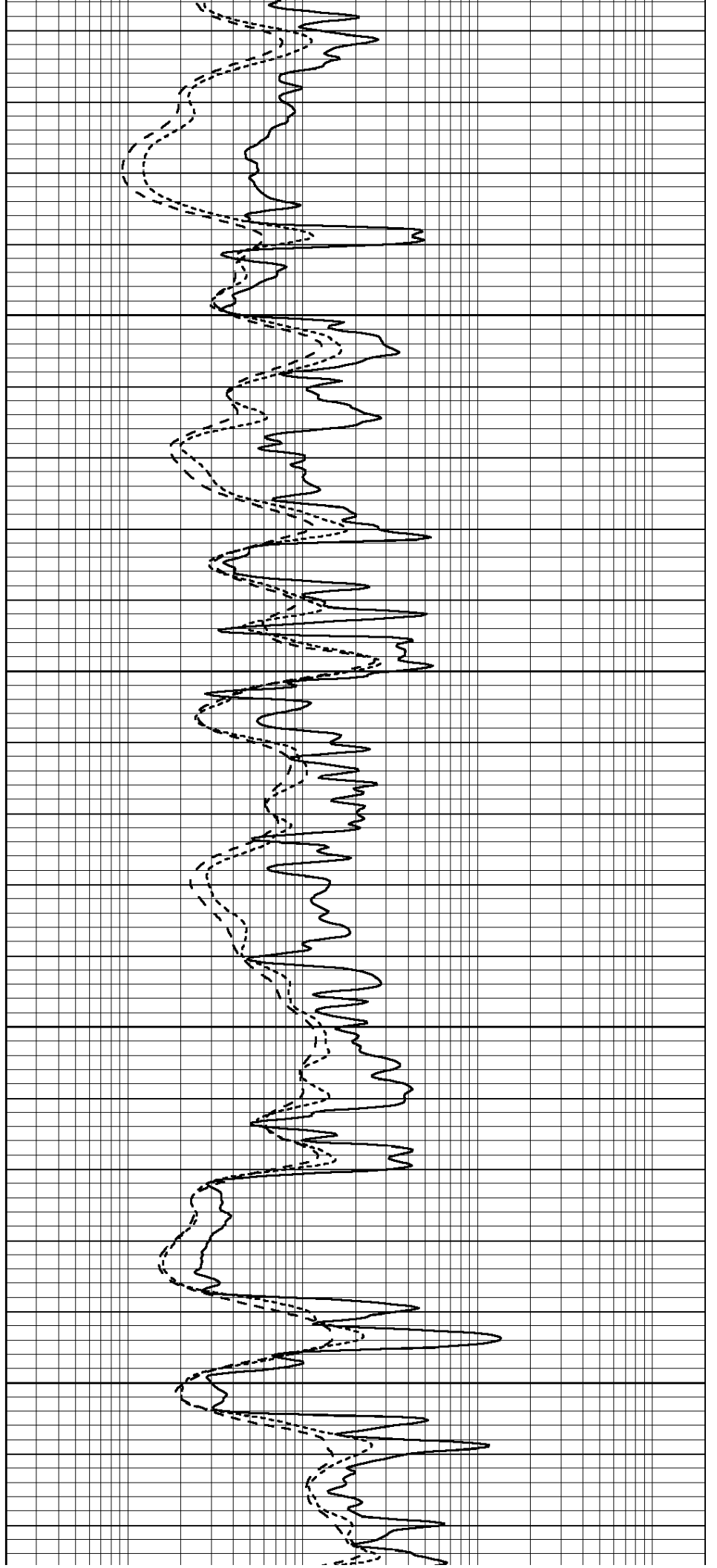


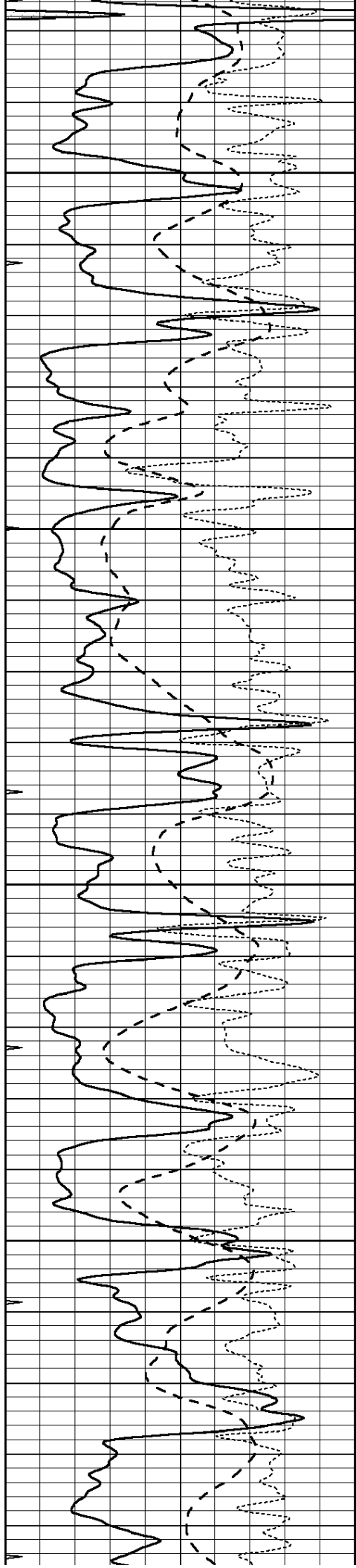
3450

3500

3550

3600



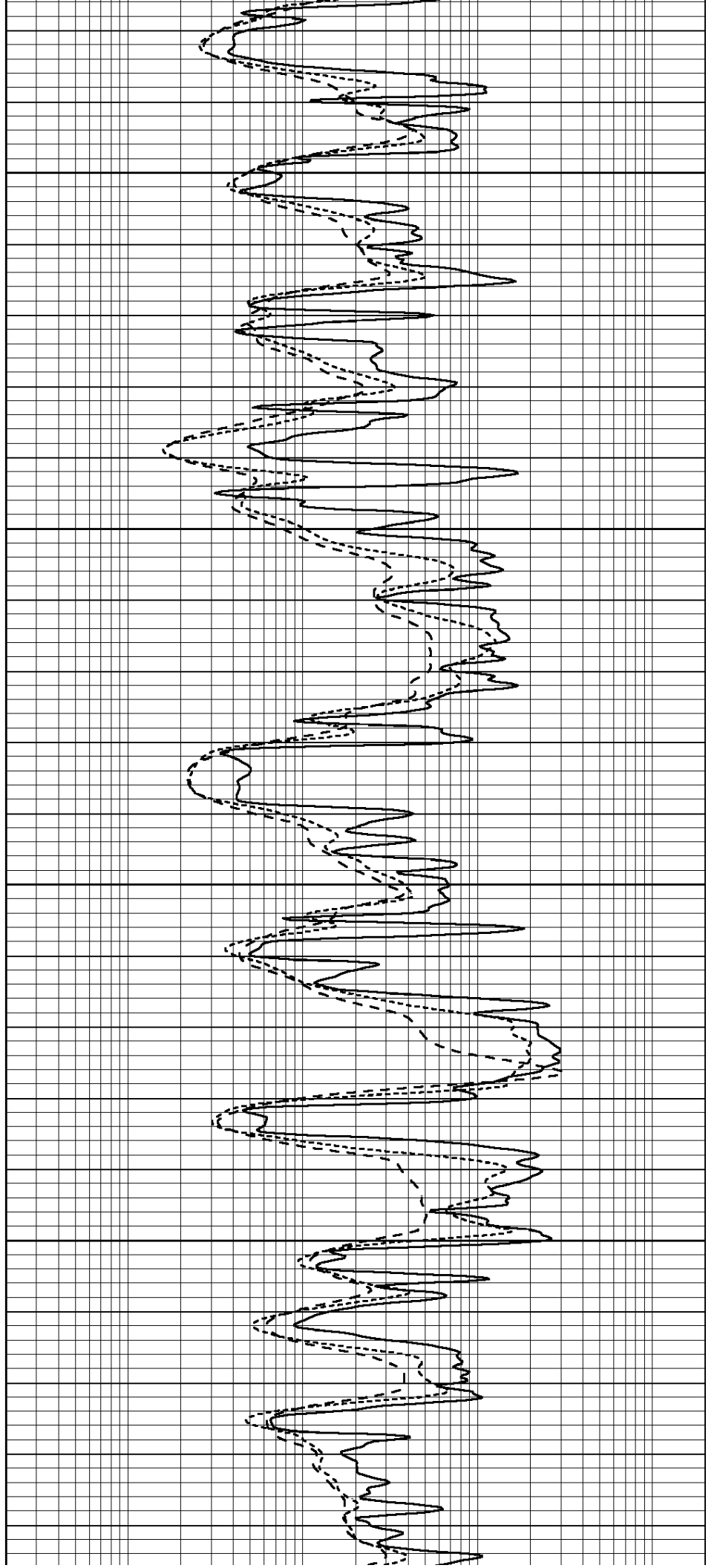


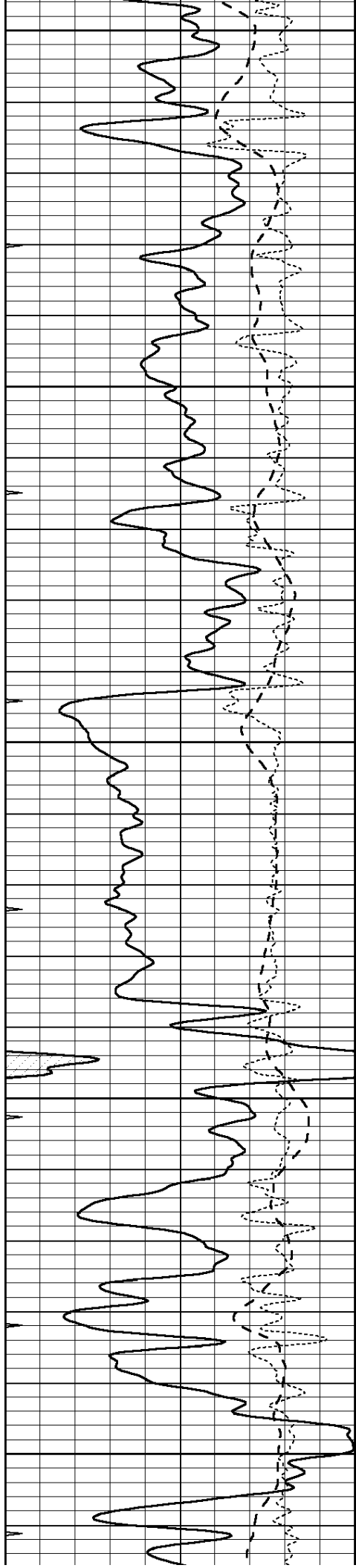
3650

3700

3750

3800





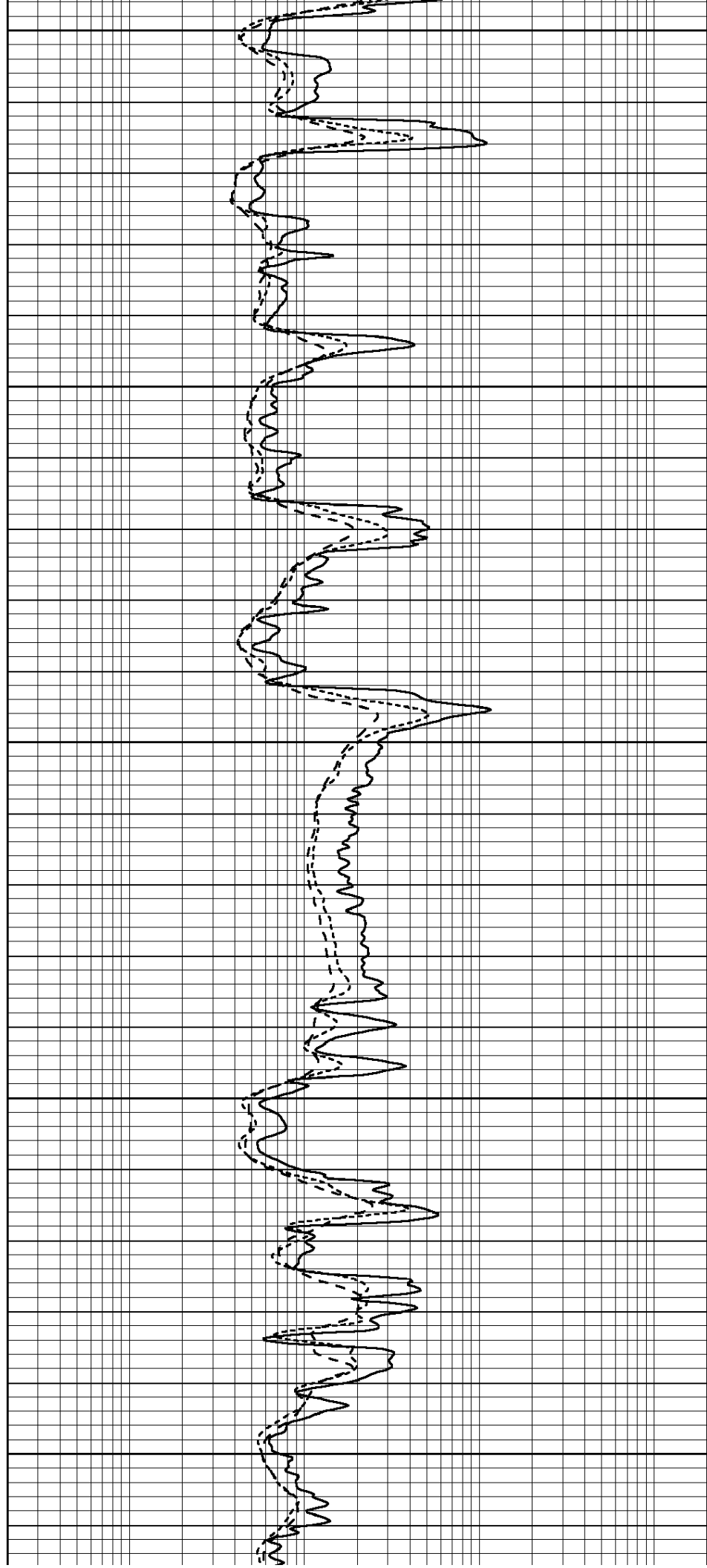
3850

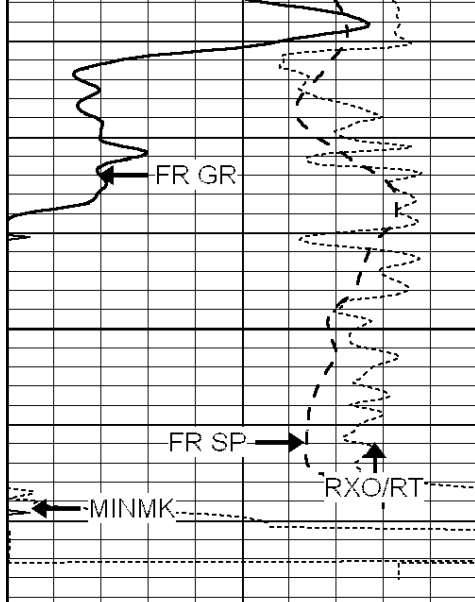
3900

3950

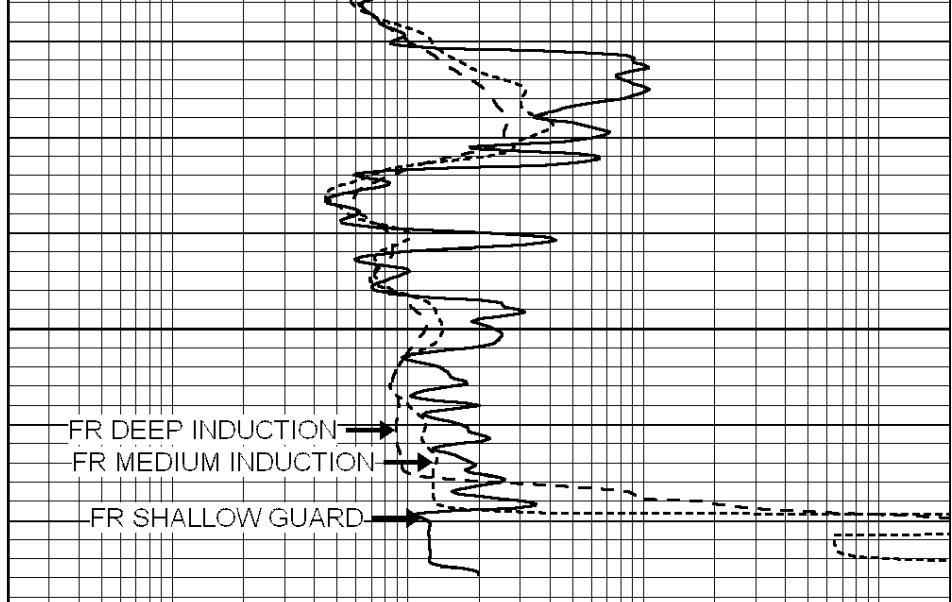
4000

4050



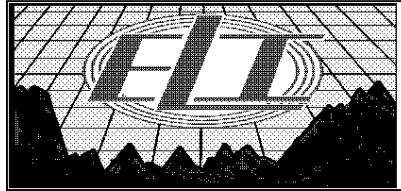


4100
LTD 4122



0	GAMMA RAY (GAPI)	150
-100	SP (mV)	100
-250	Rxo/Rt	50
0	MINMK	20

0.2	SHALLOW GUARD (Ohm-m)	2000
0.2	DEEP INDUCTION (Ohm-m)	2000
0.2	MEDIUM INDUCTION (Ohm-m)	2000

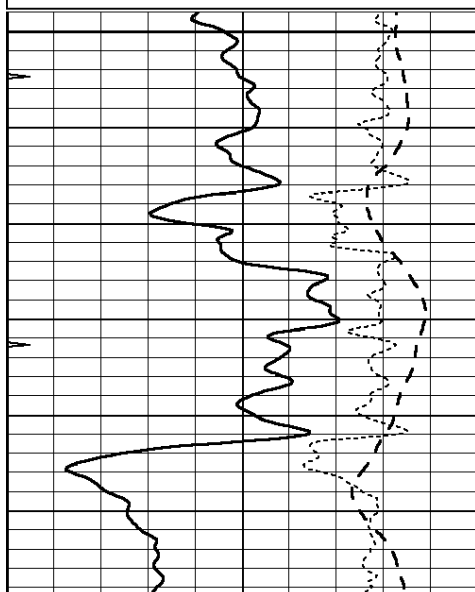


REPEAT SECTION

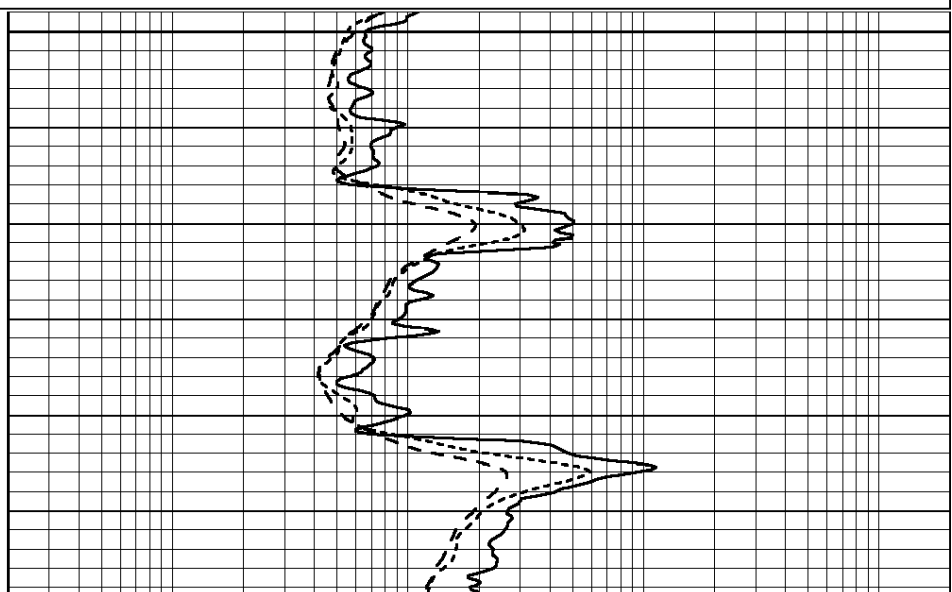
Database File: 4527ddn.db
 Dataset Pathname: pass2.4
 Presentation Format: _dil
 Dataset Creation: Wed Jan 29 11:38:07 2020 by Calc SOC 120430
 Charted by: Depth in Feet scaled 1:240

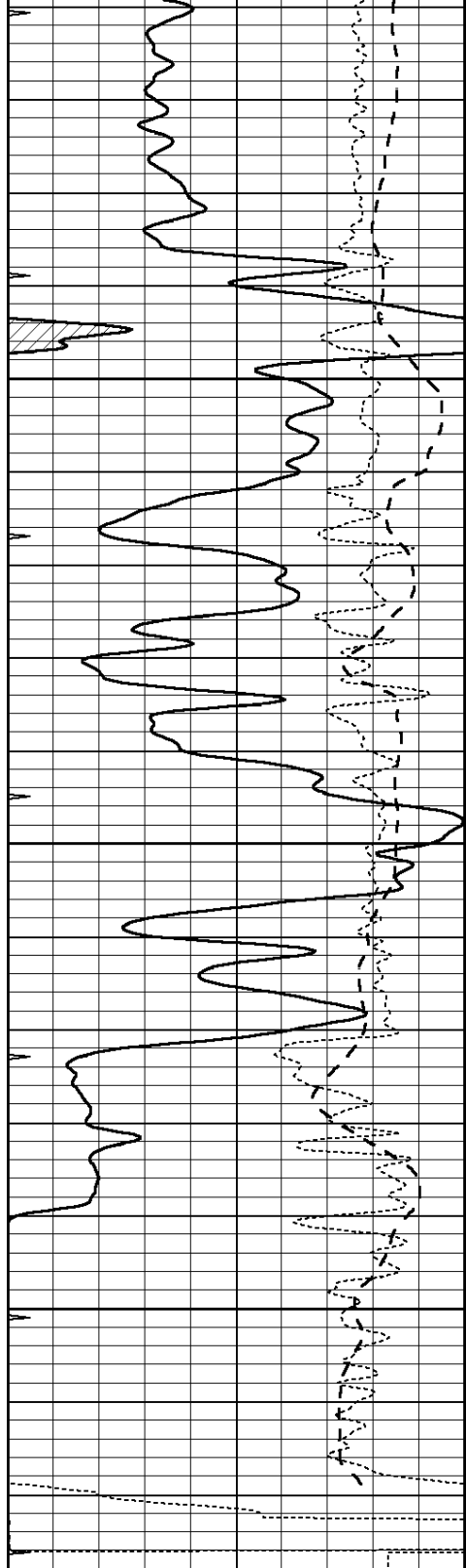
0	GAMMA RAY (GAPI)	150
-100	SP (mV)	100
-250	Rxo/Rt	50
0	MINMK	20

0.2	SHALLOW GUARD (Ohm-m)	2000
0.2	DEEP INDUCTION (Ohm-m)	2000
0.2	MEDIUM INDUCTION (Ohm-m)	2000



3900
3950



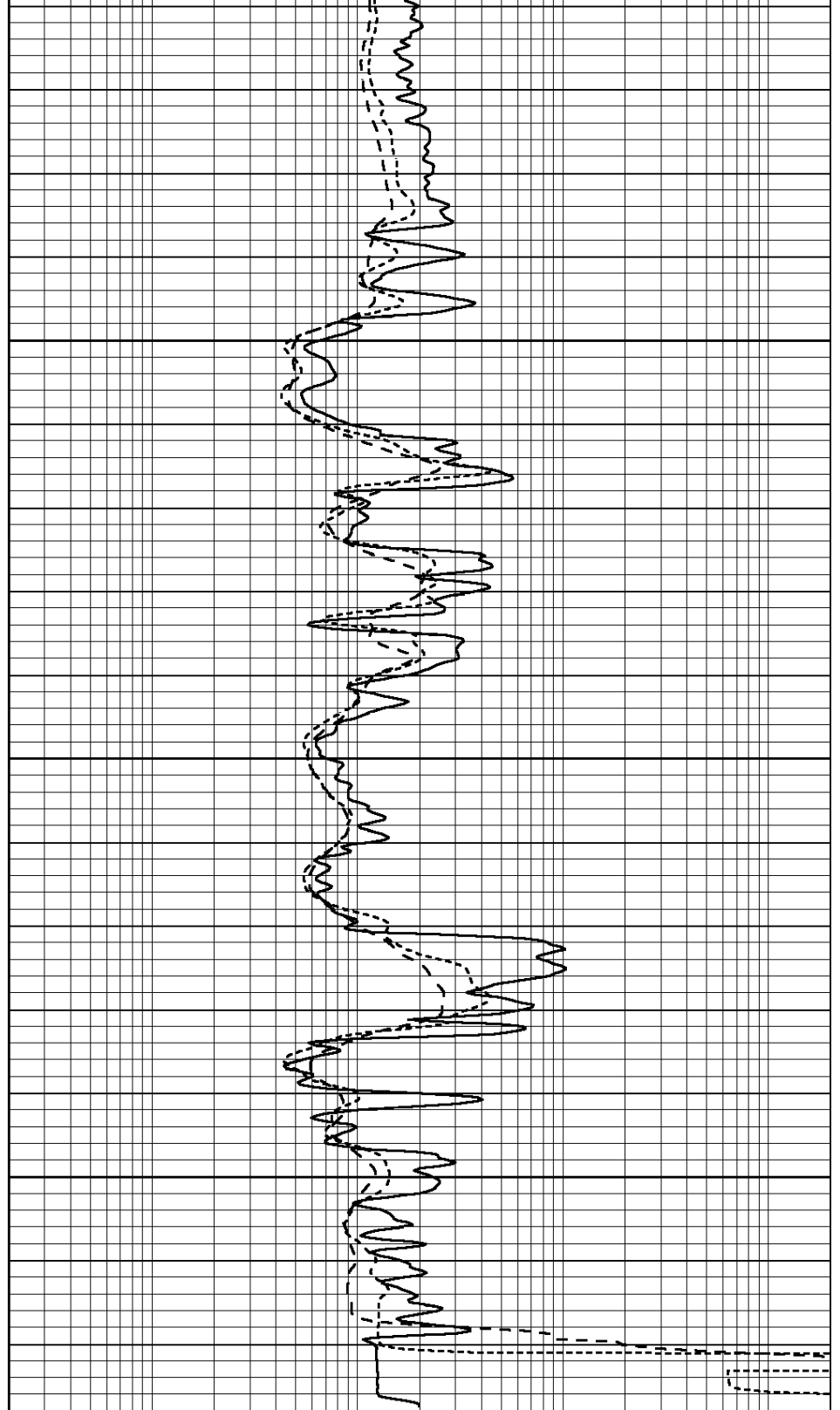


0	GAMMA RAY (GAPI)	150
-100	SP (mV)	100
-250	Rxo/Rt	50
0	MINMK	20

4000

4050

4100



0.2	SHALLOW GUARD (Ohm-m)	2000
0.2	DEEP INDUCTION (Ohm-m)	2000
0.2	MEDIUM INDUCTION (Ohm-m)	2000

Calibration Report

Database File: 1598ddn.db
 Dataset Pathname: pass4
 Dataset Creation: Wed Aug 30 02:13:00 2017 by Log SOC 120430

Serial-Model: PROBE7-DILG
 Surface Cal Performed: Wed Aug 30 00:06:33 2017
 Downhole Cal Performed: Mon Jul 28 12:02:56 2008
 After Survey Verification Performed: Mon Jul 28 12:02:56 2008

Surface Calibration

Loop:	Readings			References			Results	
	Air	Loop		Air	Loop		m	b
Deep	-0.014	0.629	V	0.000	400.000	mmho/m	620.000	0.000
Medium	0.039	0.728	V	0.000	464.000	mmho/m	675.000	-44.000
Internal:	Zero	Cal		Zero	Cal		m	b
Deep	0.011	0.610	V	0.000	400.000	mmho/m	667.135	-7.256
Medium	0.005	0.712	V	0.000	464.000	mmho/m	655.677	-3.102

Downhole Calibration

	Readings			References			Results	
	Zero	Cal		Zero	Cal		m'	b'
Deep	0.000	0.000	mmho/m	14.508	388.384	mmho/m	1.000	0.000
Medium	0.000	0.000	mmho/m	166.367	504.400	mmho/m	1.000	0.000
LL3		7.500	V		1400.000	Ohm-m		
		0.000	V		20.000	Ohm-m		
		-7.200	V		4000.000	mmho-m		

After Survey Verification

	Readings			Targets			Results	
	Zero	Cal		Zero	Cal		m'	b'
Deep	0.000	0.000	mmho/m	0.000	0.000	mmho/m	0.000	0.000
Medium	0.000	0.000	mmho/m	0.000	0.000	mmho/m	0.000	0.000
LL3		1.000	Ohm-m		1.000	Ohm-m		
		0.000	Ohm-m		0.000	Ohm-m		
		1.000	mmho-m		1.000	mmho-m		

Litho Density Calibration Report
 Serial: 002 Model: PRB

Master Calibration

Performed Mon Aug 21 11:27:42 2017

	Background	Magnesium	Aluminum	Sandstone	
Window 1	837.1	10632.5	2945.1	12110.1	cps
Window 2	772.0	9117.4	2570.1	10197.3	cps
Window 3	631.7	4669.0	1481.9	5042.9	cps
Window 4	187.0	187.5	185.9	189.9	cps
Long Space	0.0	8345.4	1798.1	9425.3	cps
Short Space	1.1	1927.9	1285.9	2050.2	cps
Rho		1.7100	2.5960	1.3800	g/cc
Pe		0.0000	2.5700	1.5500	
Rib Angle	: 45.2	Rib Slope	: 1.008	Density/Spine Ratio	: 0.558
Spine Angle	: 75.2	Spine Slope	: 3.790	Spine Intercept	: -19.6

Before Survey Verification

Performed Wed Dec 31 18:00:00 1969

Window 1	0.0	0.0	0.0	0.0	cps
Window 2	0.0	0.0	0.0	0.0	cps
Window 3	0.0	0.0	0.0	0.0	cps
Window 4	0.0	0.0	0.0	0.0	cps
Long Space	0.0	0.0	0.0	0.0	cps

Long Space	0.0	0.0	0.0	0.0	cps
Short Space	0.0	0.0	0.0	0.0	cps
Measured Rho		0.0000	0.0000	0.0000	g/cc
Measured Correction		0.0000	0.0000	0.0000	g/cc
Measured Pe			0.0000	0.0000	

After Survey Verification

Performed Wed Dec 31 18:00:00 1969

Window 1	0.0	0.0	0.0	0.0	cps
Window 2	0.0	0.0	0.0	0.0	cps
Window 3	0.0	0.0	0.0	0.0	cps
Window 4	0.0	0.0	0.0	0.0	cps
Long Space	0.0	0.0	0.0	0.0	cps
Short Space	0.0	0.0	0.0	0.0	cps
Measured Rho		0.0000	0.0000	0.0000	g/cc
Measured Correction		0.0000	0.0000	0.0000	g/cc
Measured Pe			0.0000	0.0000	

Compensated Neutron Calibration Report

Serial Number: 070808
 Tool Model: Probe

PRE-SURVEY VERIFICATION

Detector	Readings	Measured	Target
Short Space	cps		
Long Space	cps	pu	pu

POST-SURVEY VERIFICATION

Detector	Readings	Measured	Target
Short Space	cps		
Long Space	cps	pu	pu

Gamma Ray Calibration Report

Serial Number: 070558
 Tool Model: OPEN_GR
 Performed: Wed May 31 00:09:32 2017

Calibrator Value: 1.0 GAPI

Background Reading: 0.0 cps
 Calibrator Reading: 1.0 cps

Sensitivity: 0.2800 GAPI/cps