



MICRO LOG

Company: LARIO OIL & GAS COMPANY
 Well: ZIEGLER TRUST #5-31
 Field: LOGO
 County: GOVE
 State: KANSAS

Location: 700 FSI & 16th FEL
 SEC 31 TWP 12S R9E SE 31W
 Log Measured From: GROUND LEVEL
 Elevation: 2959
 Log Measured From: KELLY BUSHING
 Elevation: 2869

Company: LARIO OIL & GAS COMPANY
 Well: ZIEGLER TRUST #5-31
 Field: LOGO
 County: GOVE
 State: KANSAS

Company: LARIO OIL & GAS COMPANY
 Well: ZIEGLER TRUST #5-31
 Field: LOGO
 County: GOVE
 State: KANSAS

Company: LARIO OIL & GAS COMPANY
 Well: ZIEGLER TRUST #5-31
 Field: LOGO
 County: GOVE
 State: KANSAS

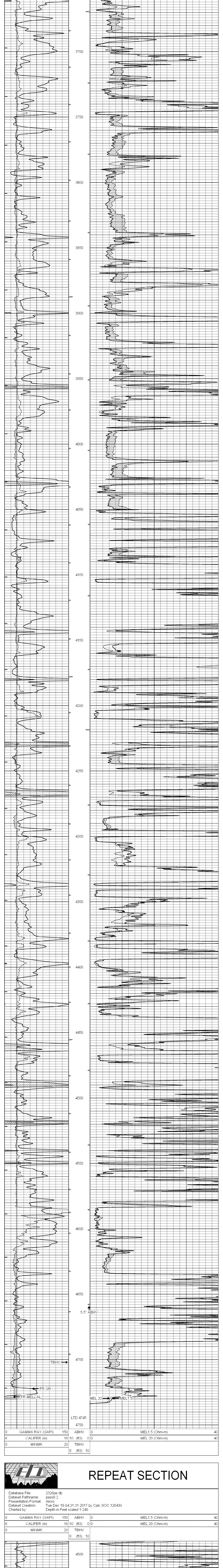
All interpretations are opinions based on inferences from electrical or other measurements and we cannot and do not guarantee the accuracy or correctness of any interpretation, and we shall not, except in the case of gross or willful negligence on our part, be liable or responsible for any loss, costs, damages, or expenses incurred or sustained by anyone resulting from any interpretation made by any of our officers, agents or employees. These interpretations are also subject to our general terms and conditions set out in our current Price Schedule.

Comments

THANK YOU FOR USING ELI WIRELINE HAYS, KANSAS (785) 628-6395
 DIRECTIONS
 OAKLEY, KS., 11S. ON HWY 83 TO "GOVE RD.", 2W., N. INTO

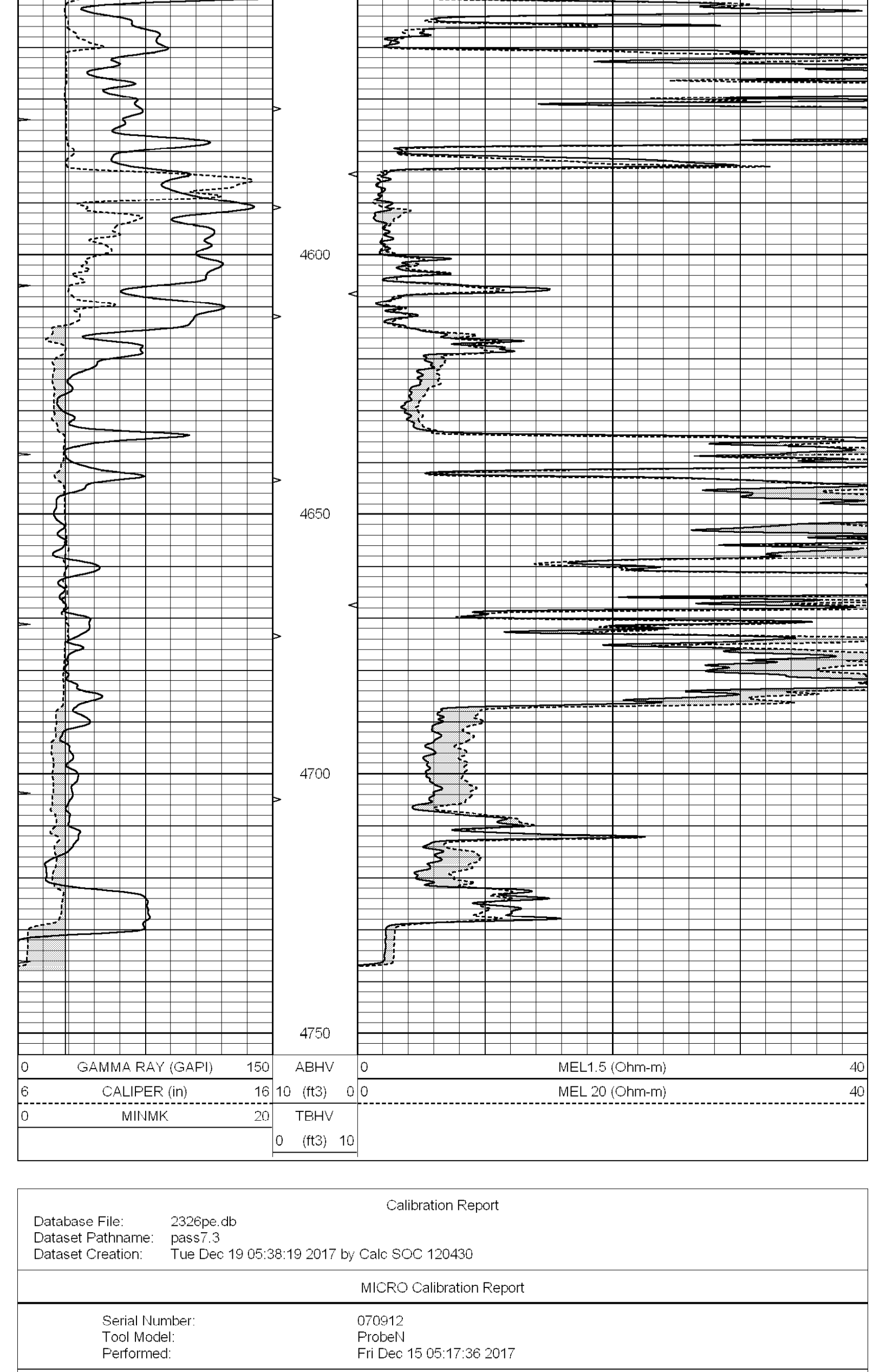
MAIN SECTION

Database File: 2326pe.db
 Dataset Pathname: pass7.4
 Presentation Format: micro
 Dataset Creation: Tue Dec 19 05:46:43 2017
 Charted by: Depth in Feet scaled 1.240



REPEAT SECTION

Database File: 2326pe.db
 Dataset Pathname: pass6.2
 Presentation Format: micro
 Dataset Creation: Tue Dec 19 04:31:31 2017 by Calc SOC 120430
 Charted by: Depth in Feet scaled 1.240



Calibration Report

Database File: 2326pe.db
 Dataset Pathname: pass7.3
 Dataset Creation: Tue Dec 19 05:38:19 2017 by Calc SOC 120430

MICRO Calibration Report

Serial Number:	070912
Tool Model:	Proben1
Performed:	Fri Dec 15 05:17:36 2017
Caliper Calibration:	Gain=2.933 Offset=5.366
References	Low Cal High Cal
Readings	6.800 15.000
	0.489 3.285
1.5" Calibration:	Gain=40.000 Offset=-0.800
References	Low Cal High Cal
Readings	0.000 20.000
	0.002 1.239
2" Calibration:	Gain=48.000 Offset=-1.000
References	Low Cal High Cal
Readings	0.000 20.000
	0.003 1.075
Gamma Ray Calibration Report	
Serial Number:	110959
Tool Model:	OPEN_GR
Performed:	Tue Dec 19 03:22:50 2017
Calibrator Value:	1.0 GAPI
Background Reading:	0.0 cps
Calibrator Reading:	1.0 cps
Sensitivity:	0.2400 GAPI/cps