



MIDWEST SURVEYS
 LOGGING - PERFORATING - CONSULTING SERVICES
 P.O. Box 68, Osawatomie, KS 66064
 913 / 755 - 2128

GAMMA RAY / NEUTRON / CCL

File No.

Company Triple "T" Oil, LLC.
 Well Gerken No. T-8
 Field Block
 County Miami State Kansas

Location 4610' FSL & 1260' FEL
 NW-SW-NE-NE

Sec. 29 Twp. 18S Rge. 24E
 Permanent Datum GL Elevation 925'
 Log Measured From GL
 Drilling Measured From GL

API# 15-121-31,128

Date 11-03-2015

Run Number One
 Depth Driller 560.0
 Depth Logger 516.5
 Bottom Logged Interval 515.5
 Top Log Interval 20.0
 Fluid Level Full

Type Fluid Water
 Density / Viscosity NA
 Salinity - PPM Cl NA
 Max Recorded Temp NA
 Estimated Cement Top 0.0
 Equipment No. Location 102 Osawatomie
 Recorded By Gary Windisch
 Witnessed By Lance Town

| BORE-HOLE RECORD | | | | CASING RECORD | | | |
|------------------|--------|------|-------|---------------|-------|------|--------|
| Run No. | BIT | FROM | TO | SIZE | WGT. | FROM | TO |
| One | 9.875" | 0.0 | 20.0 | 7.00" | 17.0# | 0.0 | 20.0 |
| Two | 5.625" | 20.0 | 590.0 | 2.875" | 6.5# | 0.0 | 547.45 |
| | | | | Baffle | Set | At | 517.65 |

Other Services Perforate

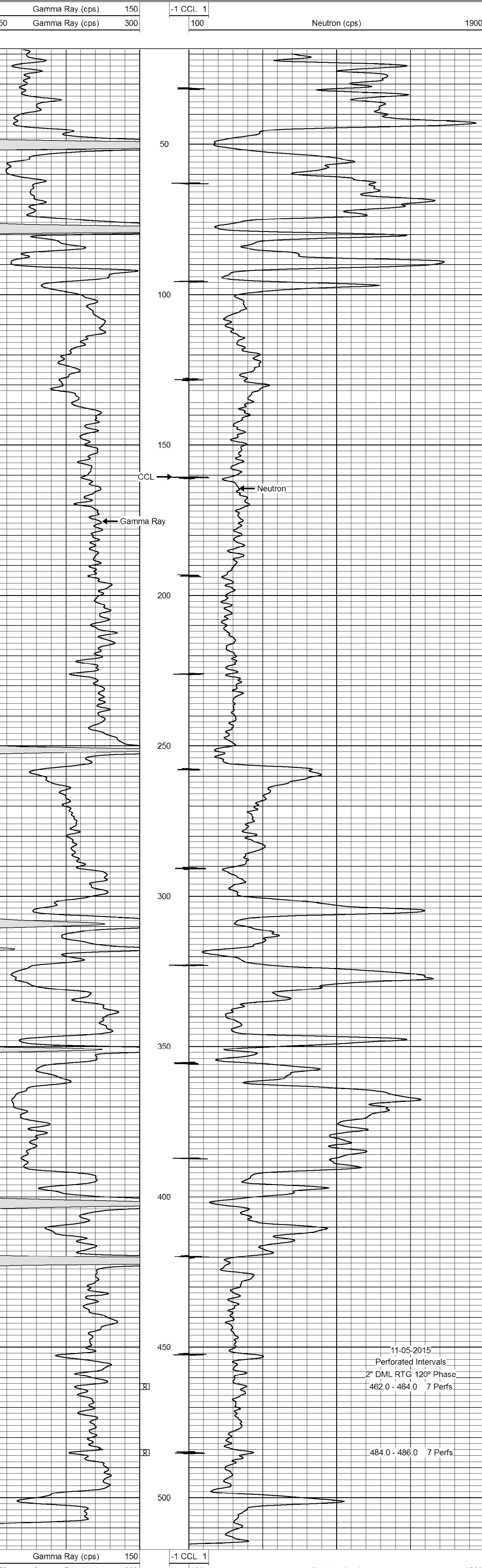
<<< Fold Here >>>

All interpretations are opinions based on inferences from electrical or other measurements and we cannot and do not guarantee the accuracy or correctness of any interpretation, and we shall not, except in the case of gross or willful negligence on our part, be liable or responsible for any loss, costs, damages, or expenses incurred or sustained by anyone resulting from any interpretation made by any of our officers, agents or employees. These interpretations are also subject to our general terms and conditions set out in our current Price Schedule.

Comments

Drilling Contractor :
 Town Oilfield Services, Inc.

Database File: gerken 8t.db
 Dataset Pathname: pass1
 Presentation Format: gr-n-ccl
 Dataset Creation: Tue Nov 03 08:10:02 2015 by Log SCH 111116
 Charted by: Depth in Feet scaled 1:240



11-05-2015
 Perforated Intervals
 2" DML RTG 120° Phase
 462.0 - 464.0 7 Perfs
 484.0 - 486.0 7 Perfs