



MIDWEST SURVEYS
 LOGGING - PERFORATING - CONSULTING SERVICES
 P.O. Box 68, Osawatomie, KS 66064
 913 / 755 - 2128

GAMMA RAY / NEUTRON / CCL

File No. Company Triple "T" Oil, LLC.
 Well Gerken No. T-4
 Field Block
 County Miami State Kansas

Location 4610' FSL & 1920' FEL
 NW-SE-NW/NE
 Sec 29 Twp. 18S Rge. 24E
 Permanent Datum GL Elevation 926'
 Log Measured From GL
 Drilling Measured From GL

Other Services
 Perforate

Date 10-27-2015
 Run Number One
 Depth Driller 560.0
 Depth Logger 515.0
 Bottom Logged Interval 514.0
 Top Log Interval 20.0
 Fluid Level Full

Type Fluid Water
 Density / Viscosity NA
 Salinity - PPM Cl NA
 Max Recorded Temp NA
 Estimated Cement Top 0.0
 Equipment No. 102
 Location Osawatomie
 Recorded By Gary Windisch
 Witnessed By Lance Town

BORE-HOLE RECORD				CASING RECORD			
Run No.	BIT	FROM	TO	SIZE	WGT.	FROM	TO
One	9.875"	0.0	20.0	7.00"	17.0#	0.0	20.0
Two	5.625"	20.0	590.0	2.875"	6.5#	0.0	550.25
				Baffle	Set	At	517.55

Run No.	BIT	FROM	TO	SIZE	WGT.	FROM	TO
One	9.875"	0.0	20.0	7.00"	17.0#	0.0	20.0
Two	5.625"	20.0	590.0	2.875"	6.5#	0.0	550.25
				Baffle	Set	At	517.55

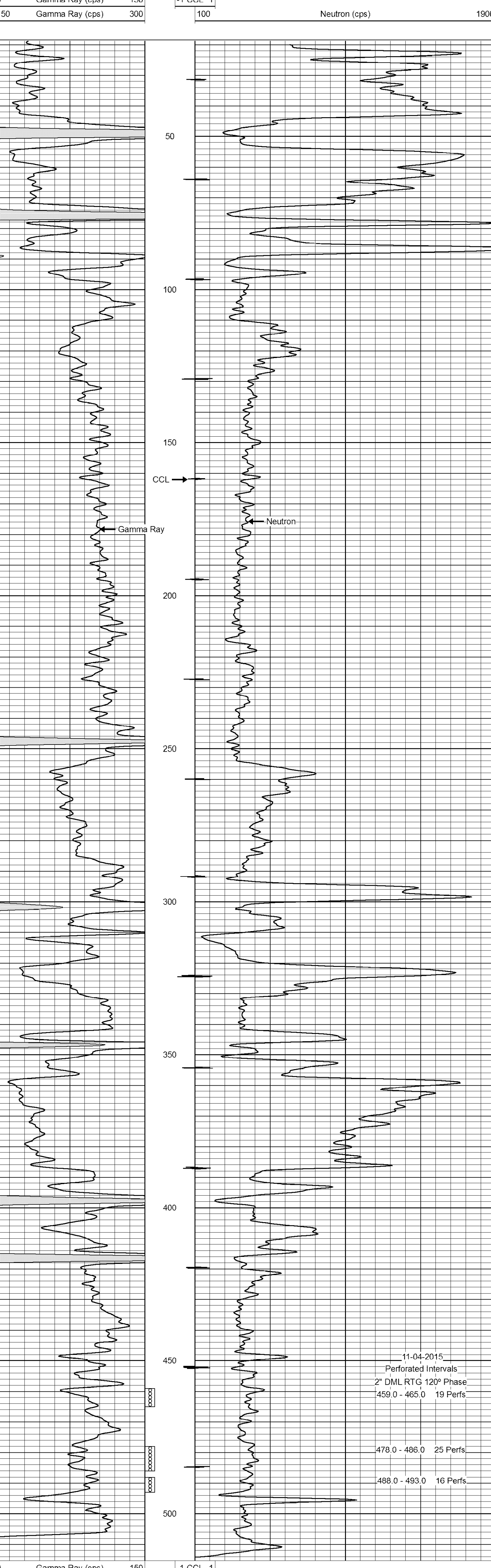
<<< Fold Here >>>

All interpretations are opinions based on inferences from electrical or other measurements and we cannot and do not guarantee the accuracy or correctness of any interpretation, and we shall not, except in the case of gross or willful negligence on our part, be liable or responsible for any loss, costs, damages, or expenses incurred or sustained by anyone resulting from any interpretation made by any of our officers, agents or employees. These interpretations are also subject to our general terms and conditions set out in our current Price Schedule.

Comments

Drilling Contractor :
 Town Oilfield Services, Inc.

Database File: gerken 4t.db
 Dataset Pathname: pass 1
 Presentation Format: gr-n-ccl
 Dataset Creation: Tue Oct 27 10:09:36 2015 by Log SCH 111116
 Charted by: Depth in Feet scaled 1:240



0	Gamma Ray (cps)	150	-1 CCL 1	100	Neutron (cps)	1900
150	Gamma Ray (cps)	300				