



NABORS

**COMPLETION
& PRODUCTION
SERVICES CO.**

GAMMA RAY NEUTRON LOG

Company		FALCON EXPLORATION, INC.	
Well		CIRCLE "N" TRUST #1-6 (SE)	
Field		COLUSA SOUTH	
County		GRAY	
State		KANSAS	
Location:		API # : 15-069-20481-0000	
Permanent Datum		GROUND LEVEL	
Log Measured From		1850' FSL & 2175' FEL	
Drilling Measured From		NE - SW - NW - SE	
SEC 6		TWP 28S	
RGE		30W	
Elevation		2828	
Other Services		CDL/CNL/PE	
		MEL/DIL/SON	
Date		9/3/14	
Run Number		ONE	
Depth Driller		5450	
Depth Logger		5450	
Bottom Logged Interval		1900	
Top Log Interval		00	
Casing Driller		8 5/8" @ 1840'	
Casing Logger		1840	
Bit Size		7 7/8"	
Type Fluid in Hole		CHEMICAL MUD	
Density / Viscosity		9.0/42	
pH / Fluid Loss		10.5/8.4	
Source of Sample		FLOWLINE	
Rim @ Meas. Temp		.800 @ 100F	
Rmf @ Meas. Temp		.600 @ 100F	
Rmc @ Meas. Temp		.960 @ 100F	
Source of Rmf / Rmc		MEASUREMENT	
Rim @ BHT		.620 @ 129F	
Time Circulation Stopped		3 HOURS	
Time Logger on Bottom		1:30 P.M.	
Maximum Recorded Temperature		129F	
Equipment Number		4854	
Location		HAYS, KANSAS	
Recorded By		JEFF LUEBBERS	
Witnessed By		KEITH REAVIS	

<<< Fold Here >>>

All interpretations are opinions based on inferences from electrical or other measurements and we cannot and do not guarantee the accuracy or correctness of any interpretation, and we shall not, except in the case of gross or willful negligence on our part, be liable or responsible for any loss, costs, damages, or expenses incurred or sustained by anyone resulting from any interpretation made by any of our officers, agents or employees. These interpretations are also subject to our general terms and conditions set out in our current Price Schedule.

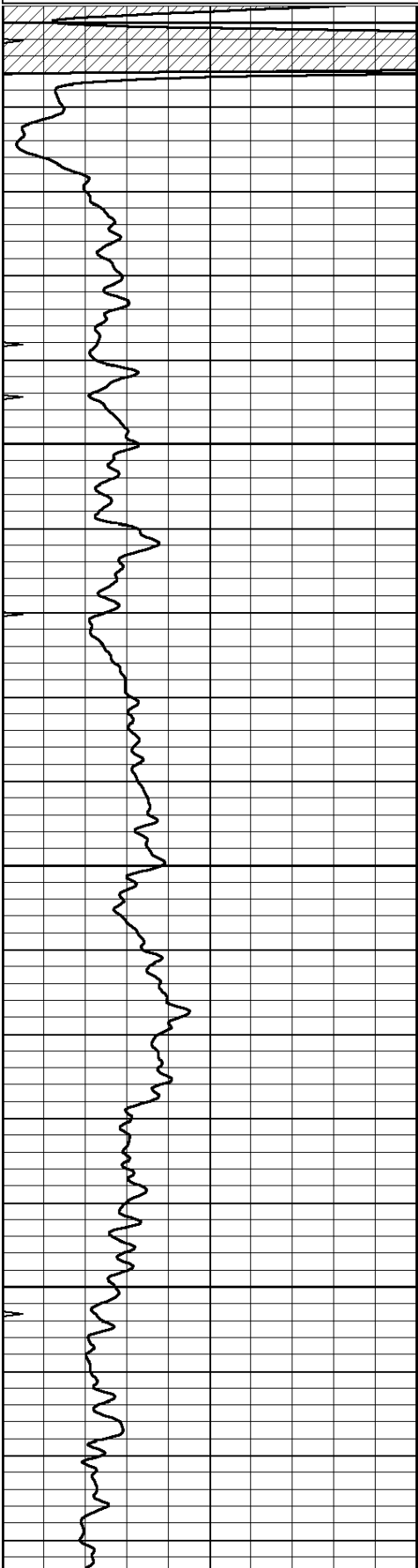
Comments

THANK YOU FOR USING "NABORS" HAYS, KANSAS (785) 628-6395
DIRECTIONS
COPELAND, KS., 7N. ON BLKTOP, 1/2W., S. INTO

Database File: 25875pe.db
Dataset Pathname: pass3.8
Presentation Format: gr-n-ccl
Dataset Creation: Wed Sep 03 17:29:47 2014 by Calc SOC 120430
Charted by: Depth in Feet scaled 1:240

0 GAMMA RAY (GAPI) 150

0 NEUTRON 1000

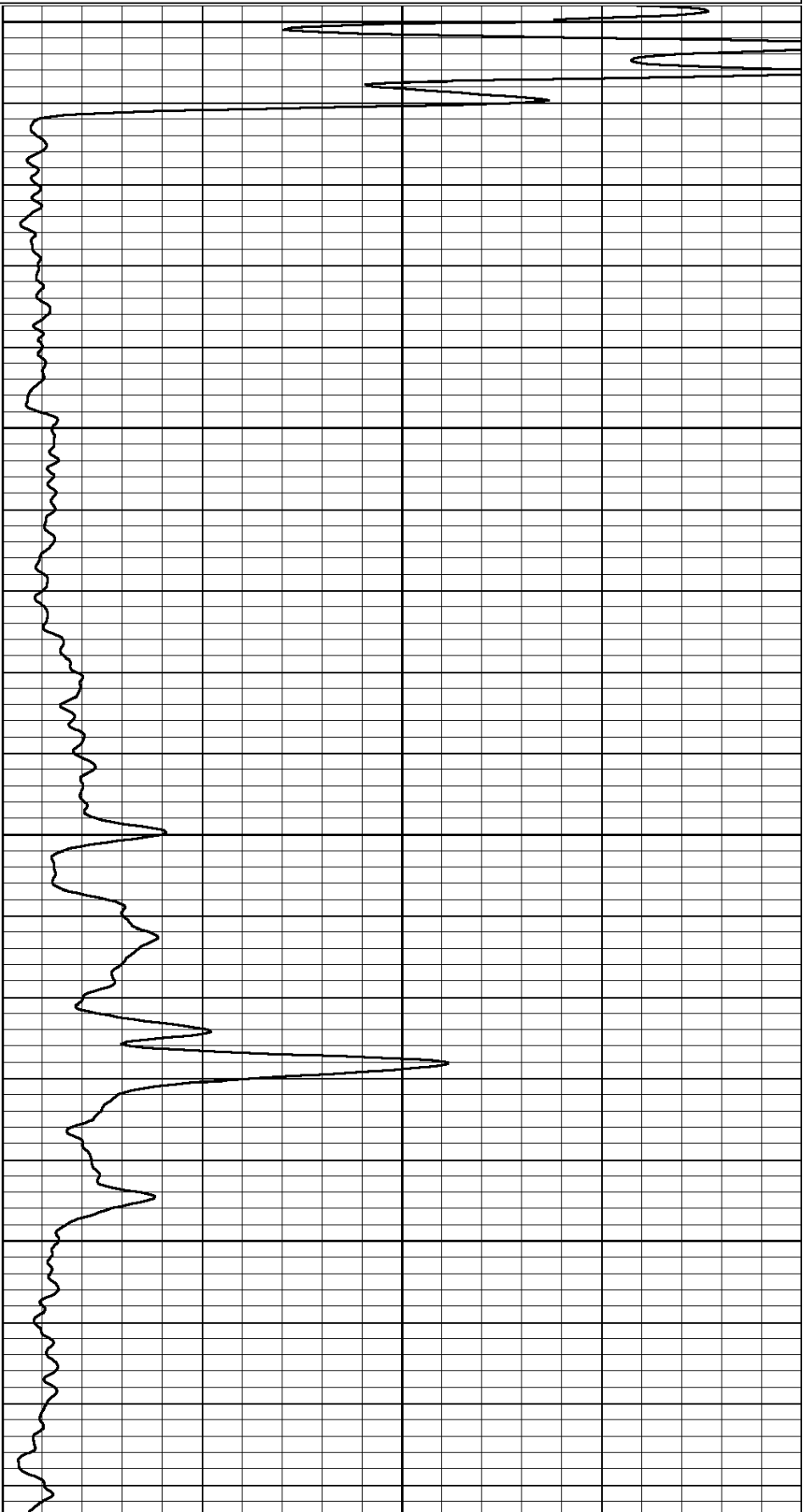


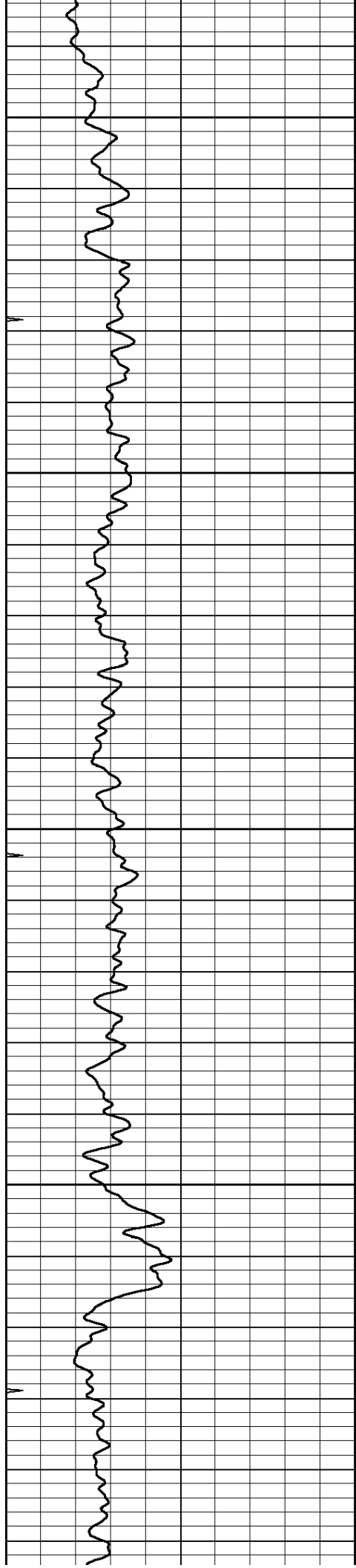
0

50

100

150





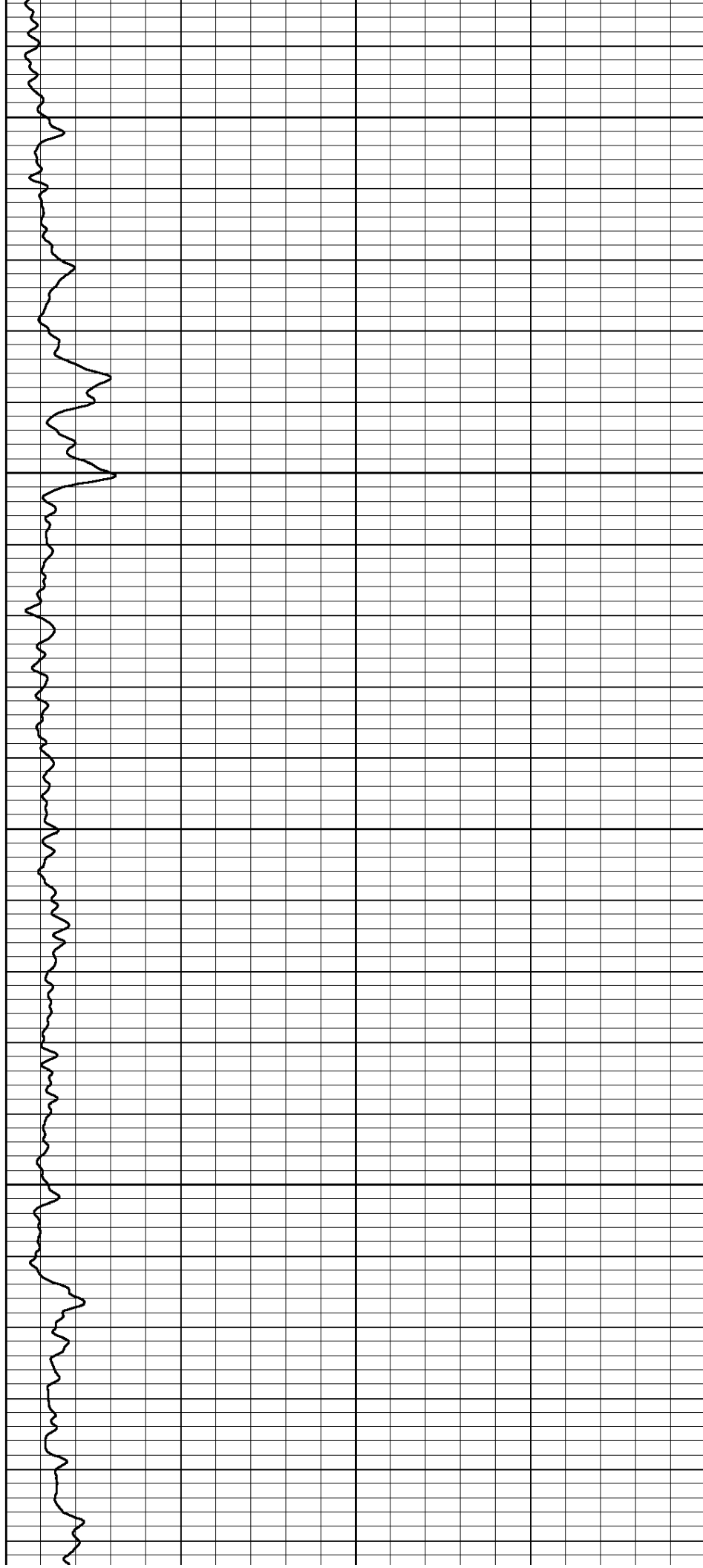
200

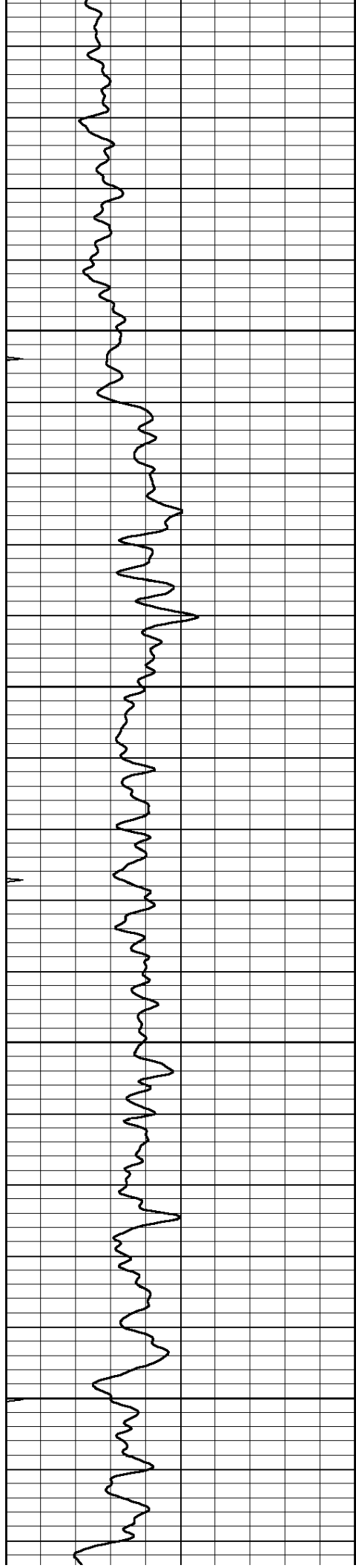
250

300

350

400



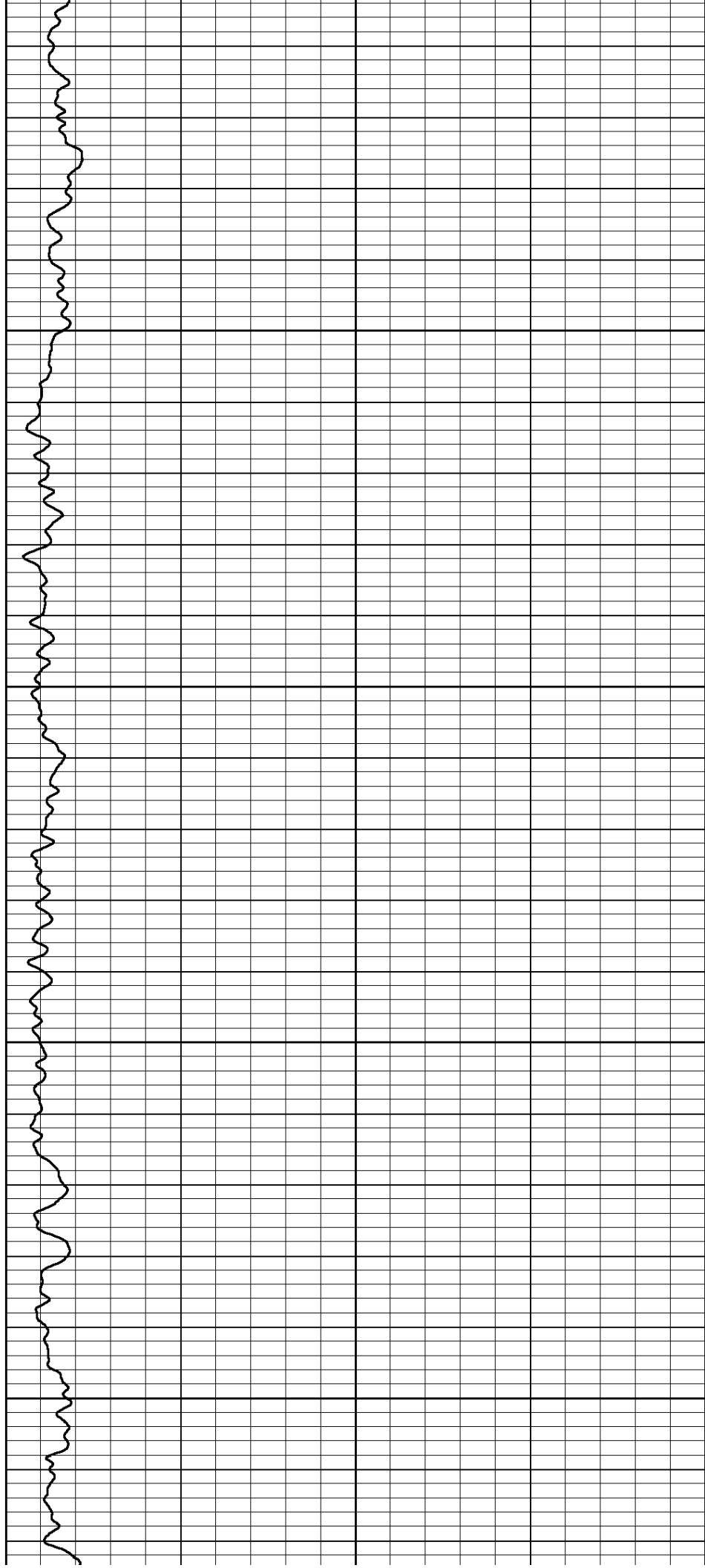


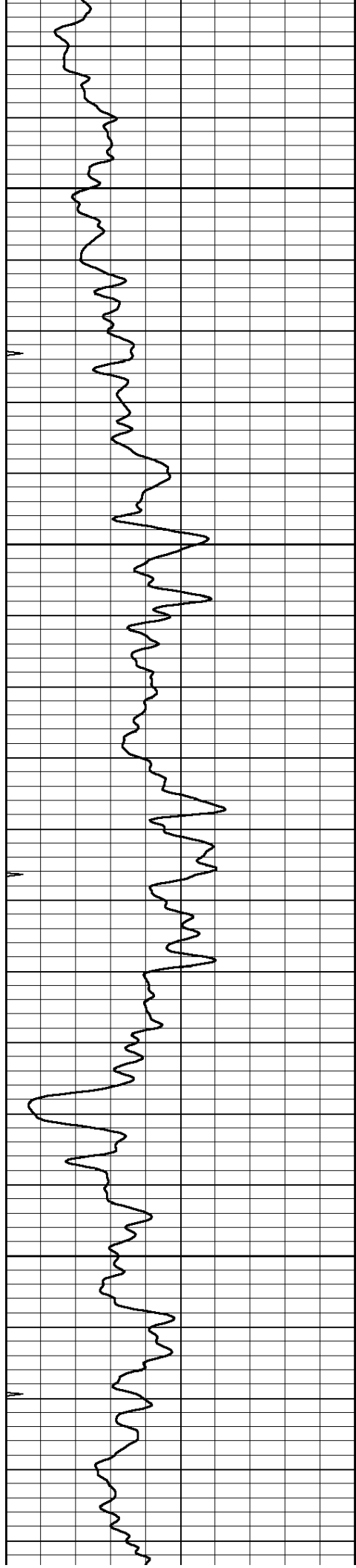
450

500

550

600



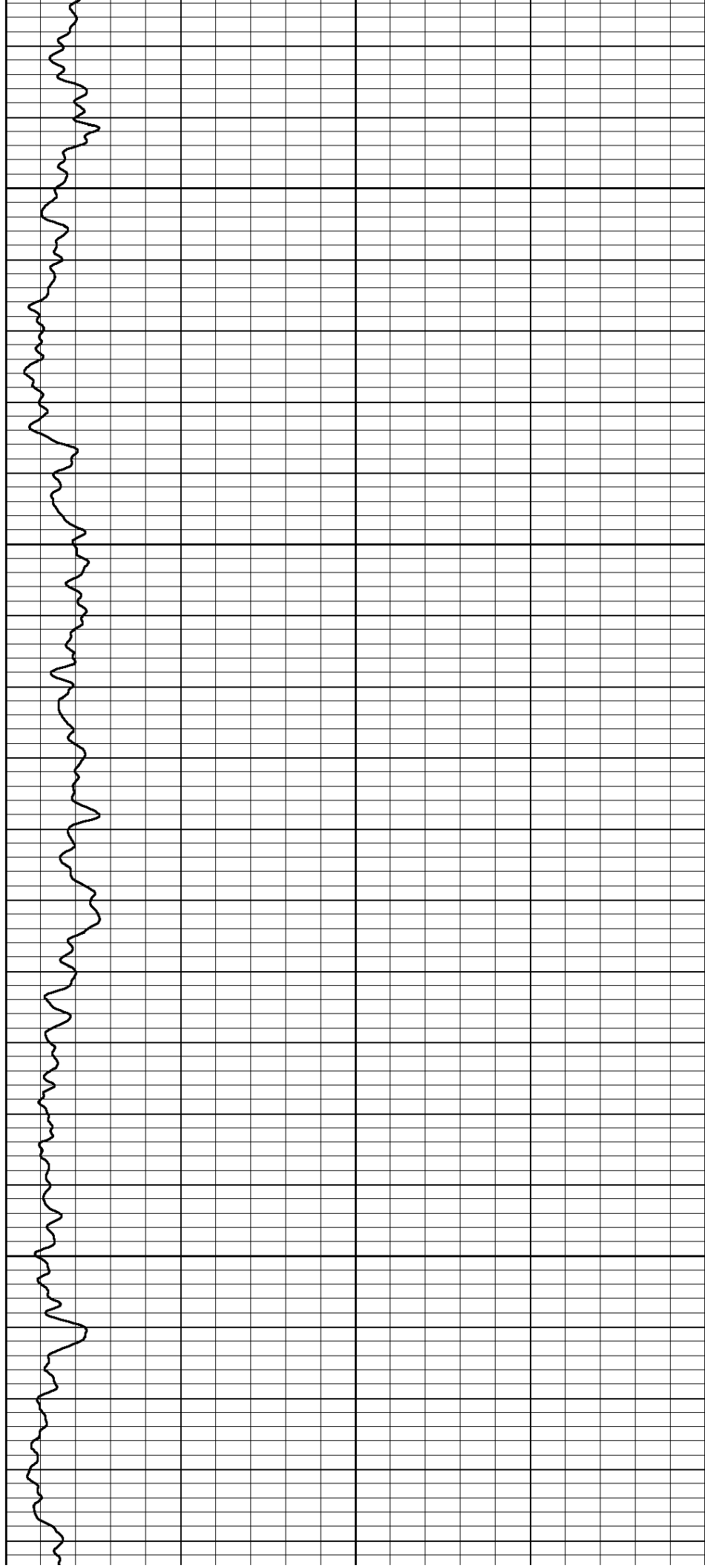


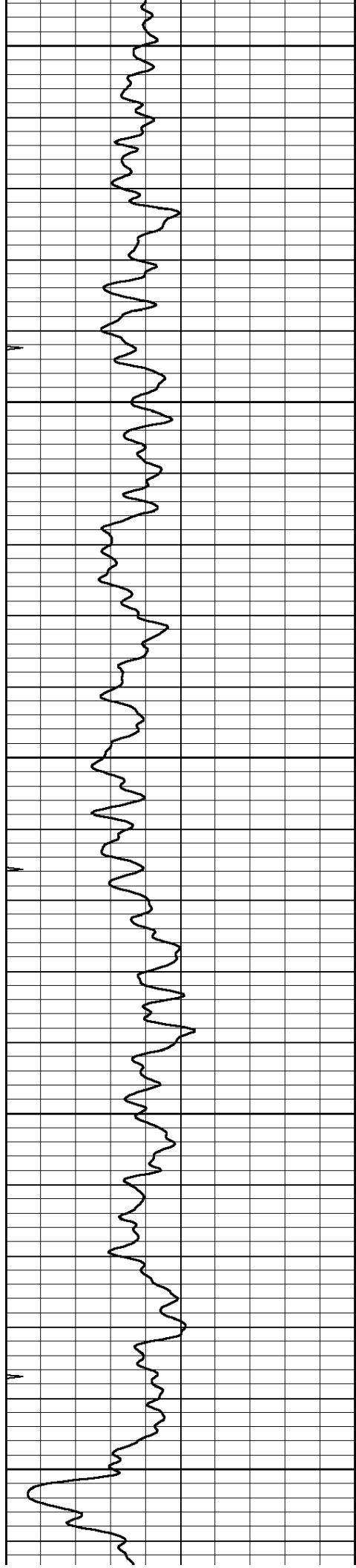
650

700

750

800





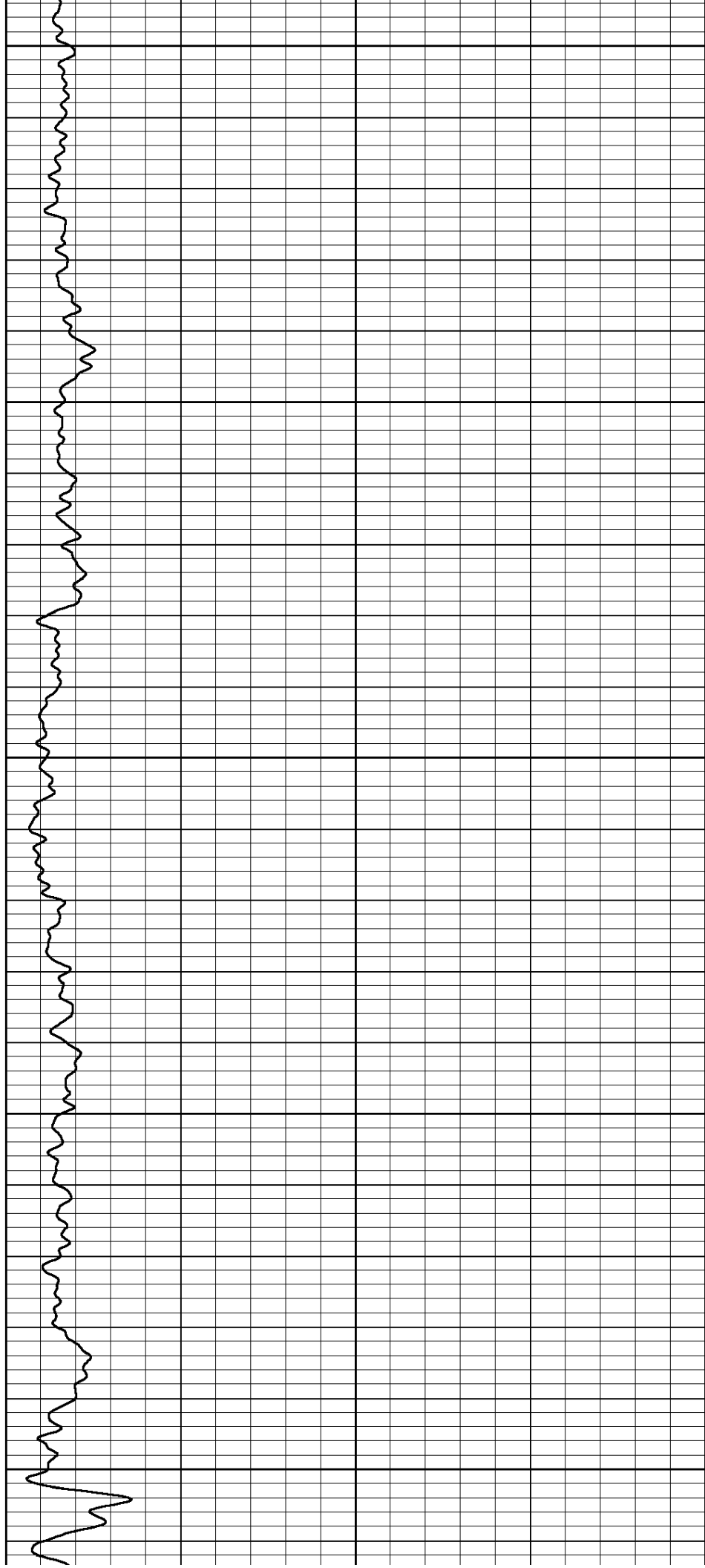
850

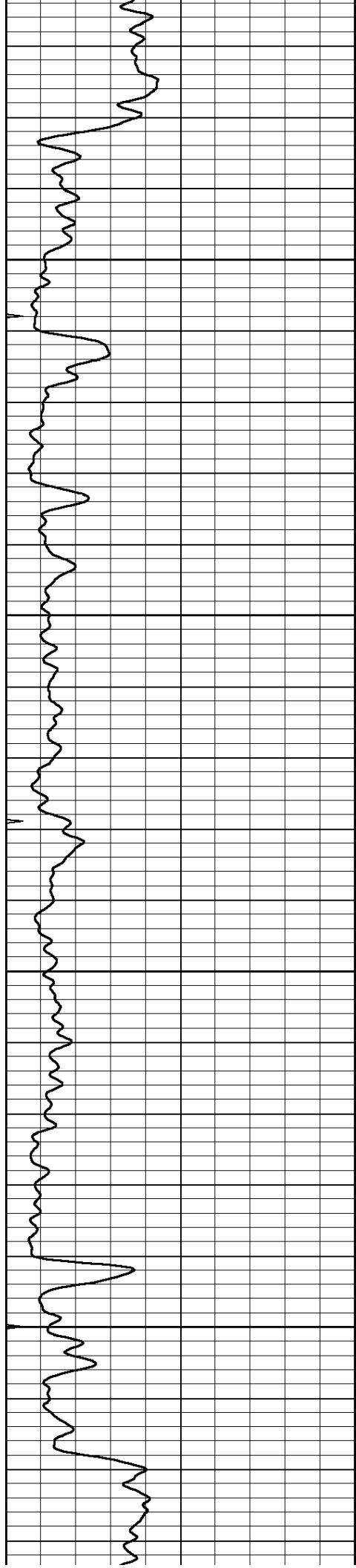
900

950

1000

1050



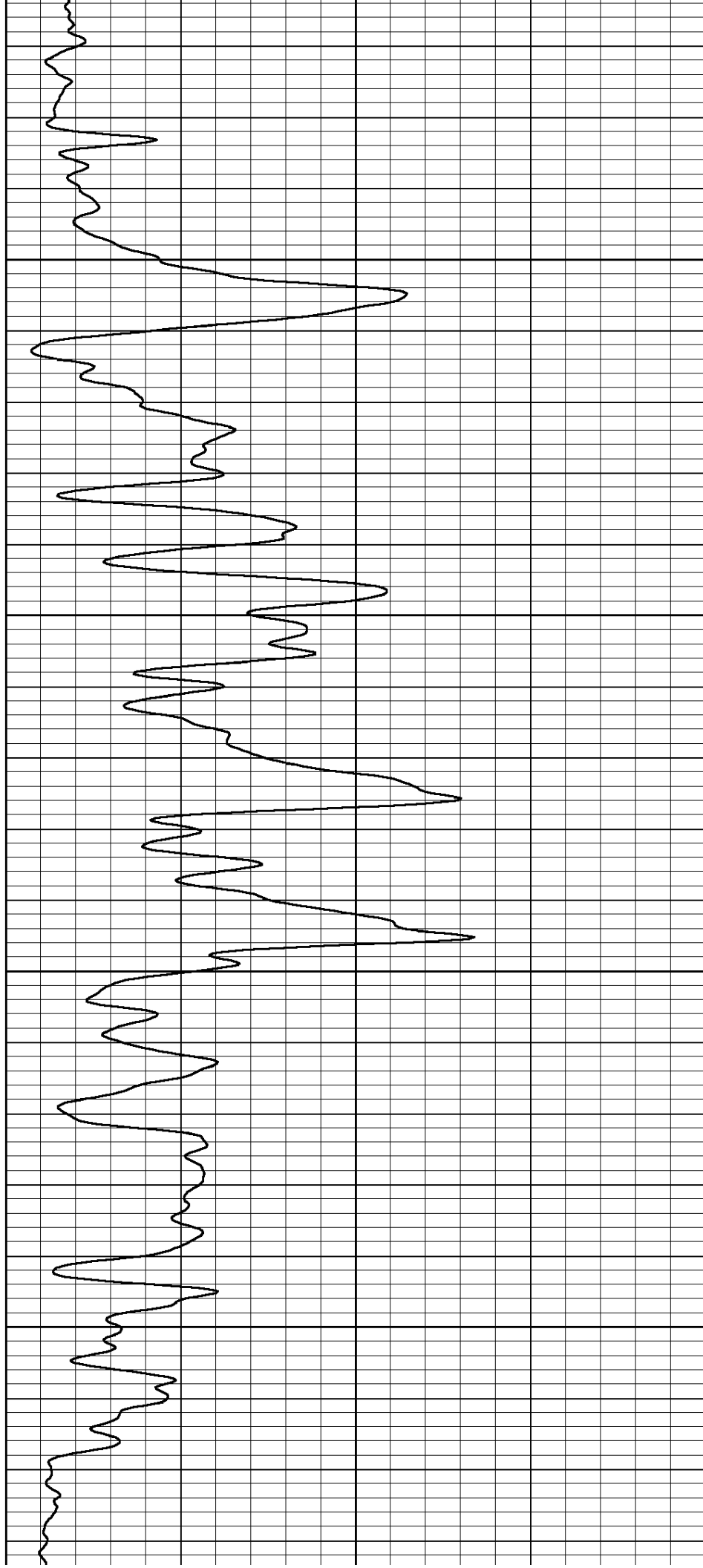


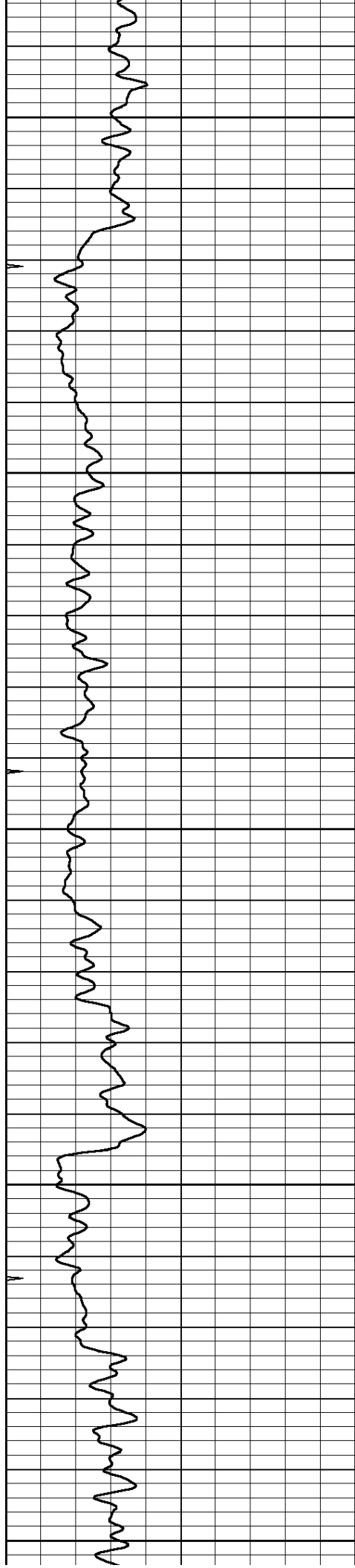
1100

1150

1200

1250





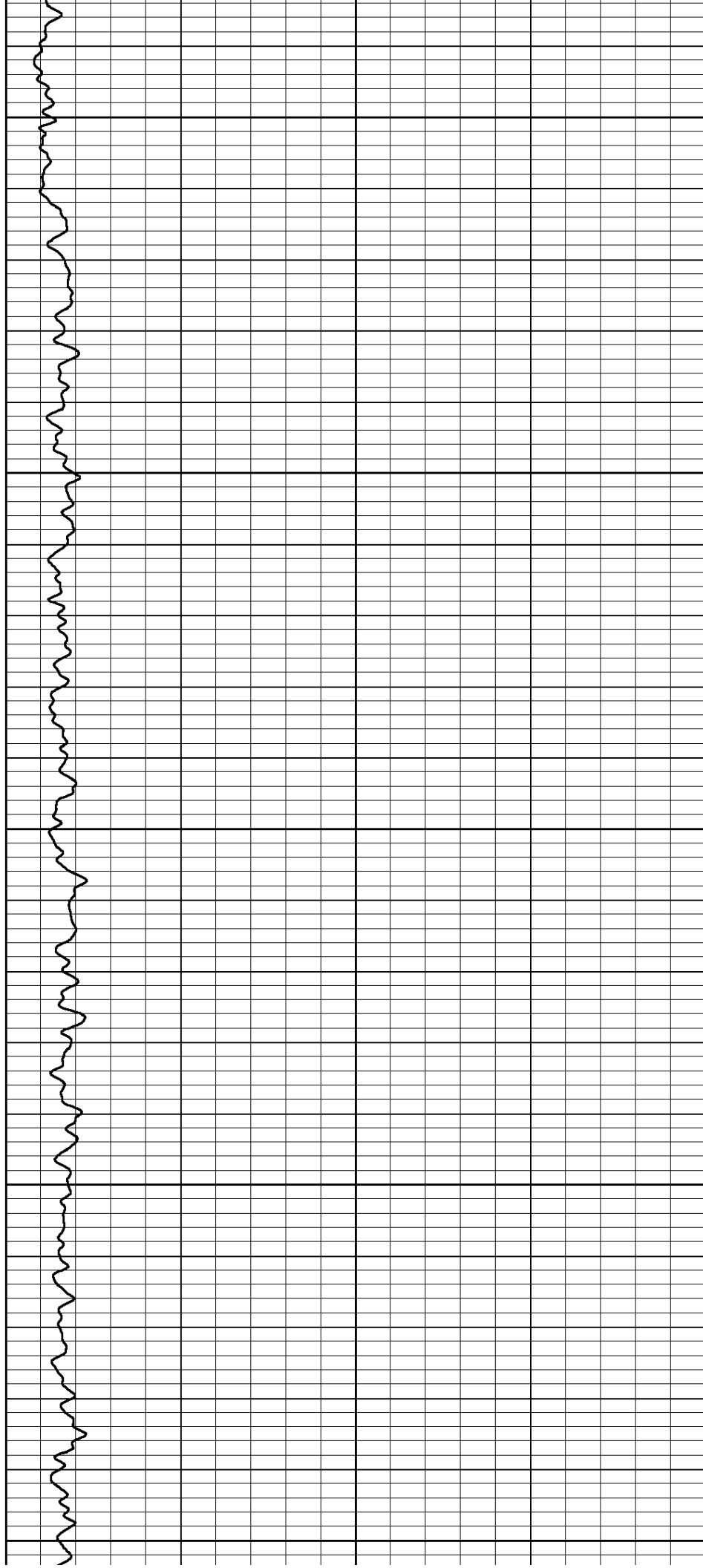
1300

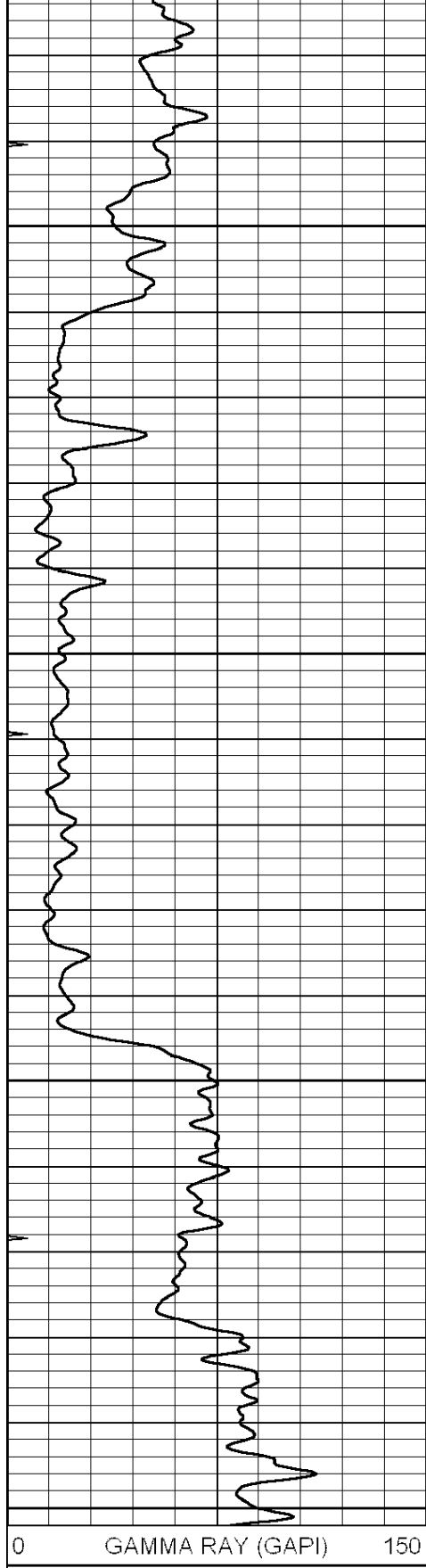
1350

1400

1450

1500





1750

1800

1850

1900

