



Pioneer Energy Services

Dual Induction Log

15-051-26,734-00-00

API No.

Company **TDI**

Well **Stackhouse East #2**

Field **Unnamed**

County **Ellis** State **Kansas**

Location **2310' FNL & 1975' FEL**

Sec: **18** Twp: **12S** Rge: **18W**

Permanent Datum **Ground Level** Elevation **2215**

Log Measured From **Kelly Bushing** 10 Ft. Above Perm. Datum

Drilling Measured From **Frontkelly Bushing** K.B. 2225
D.F. 2215
G.L. 2215

Other Services
CNL/CDL

Date **10/30/2014**

Run Number **One**

Depth Driller **3915**

Depth Logger **3916**

Bottom Logged Interval **3915**

Top Log Interval **200**

Casing Driller **8.625 @ 222**

Casing Logger **221**

Bit Size **7.875**

Type Fluid in Hole **Chemical**

Salinity, ppm CL **2500**

Density / Viscosity **9.2 52**

pH / Fluid Loss **10.0 7.4**

Source of Sample **Flowline**

Rm @ Meas. Temp **.65 @ 70**

Rmf @ Meas. Temp **.49 @ 70**

Rmc @ Meas. Temp **.88 @ 70**

Source of Rmf / Rmc **Charts**

Rm @ BHT **.40 @ 115**

Operating Rig Time **3.5 Hours**

Max Rec. Temp. F **115**

Equipment Number **108**

Location **Hays**

Recorded By **D. Fischer**

Witnessed By **Tom Denning**

<<< Fold Here >>>

All interpretations are opinions based on inferences from electrical or other measurements and we cannot and do not guarantee the accuracy or correctness of any interpretation, and we shall not, except in the case of gross or willful negligence on our part, be liable or responsible for any loss, costs, damages, or expenses incurred or sustained by anyone resulting from any interpretation made by any of our officers, agents or employees. These interpretations are also subject to our general terms and conditions set out in our current Price Schedule.

Comments

Thank you for using Pioneer Energy Services
www.pioneeres.com
785 625 3858

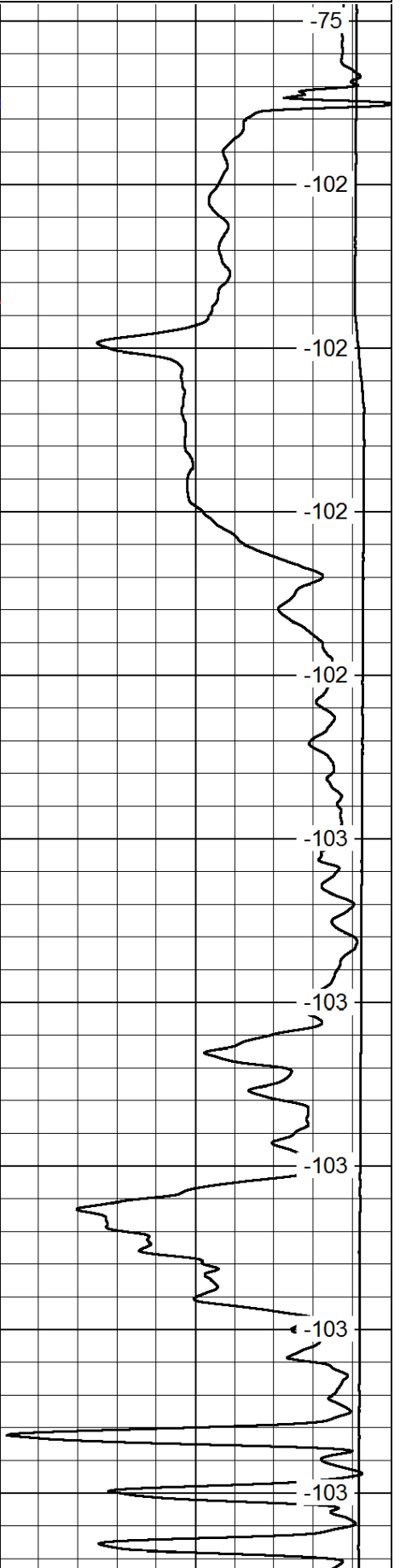
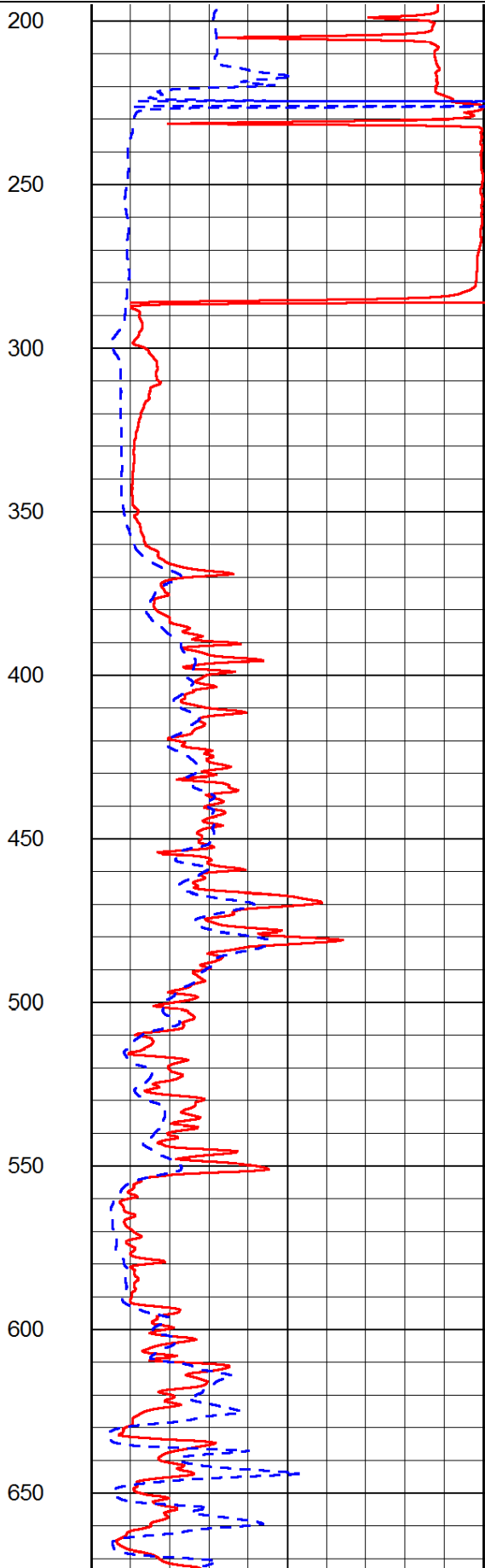
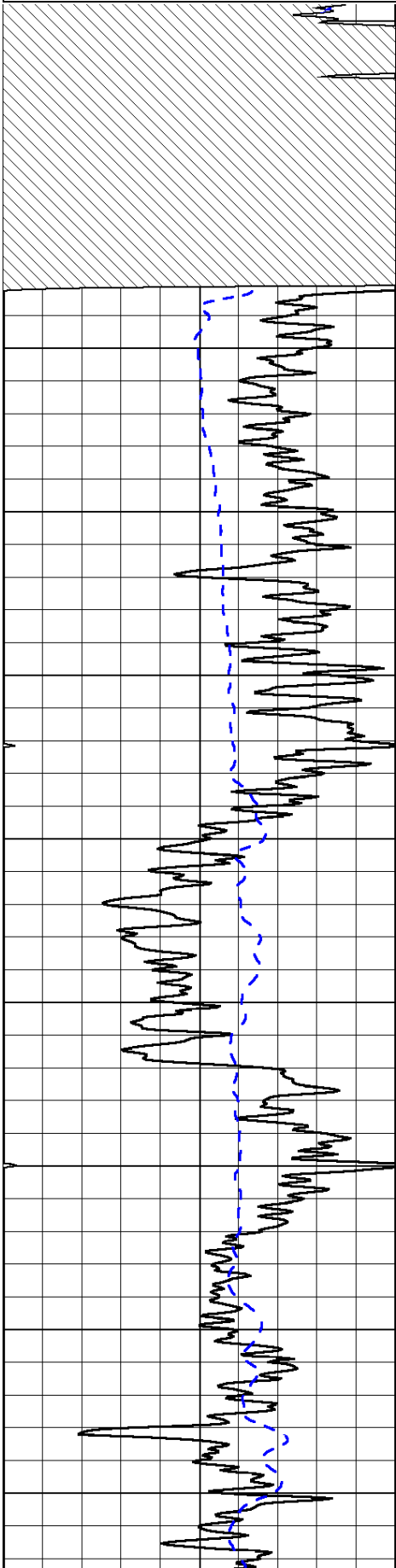
Hays Ks., North to Buckeye Rd., 2 West, 1/2 North, West Into.

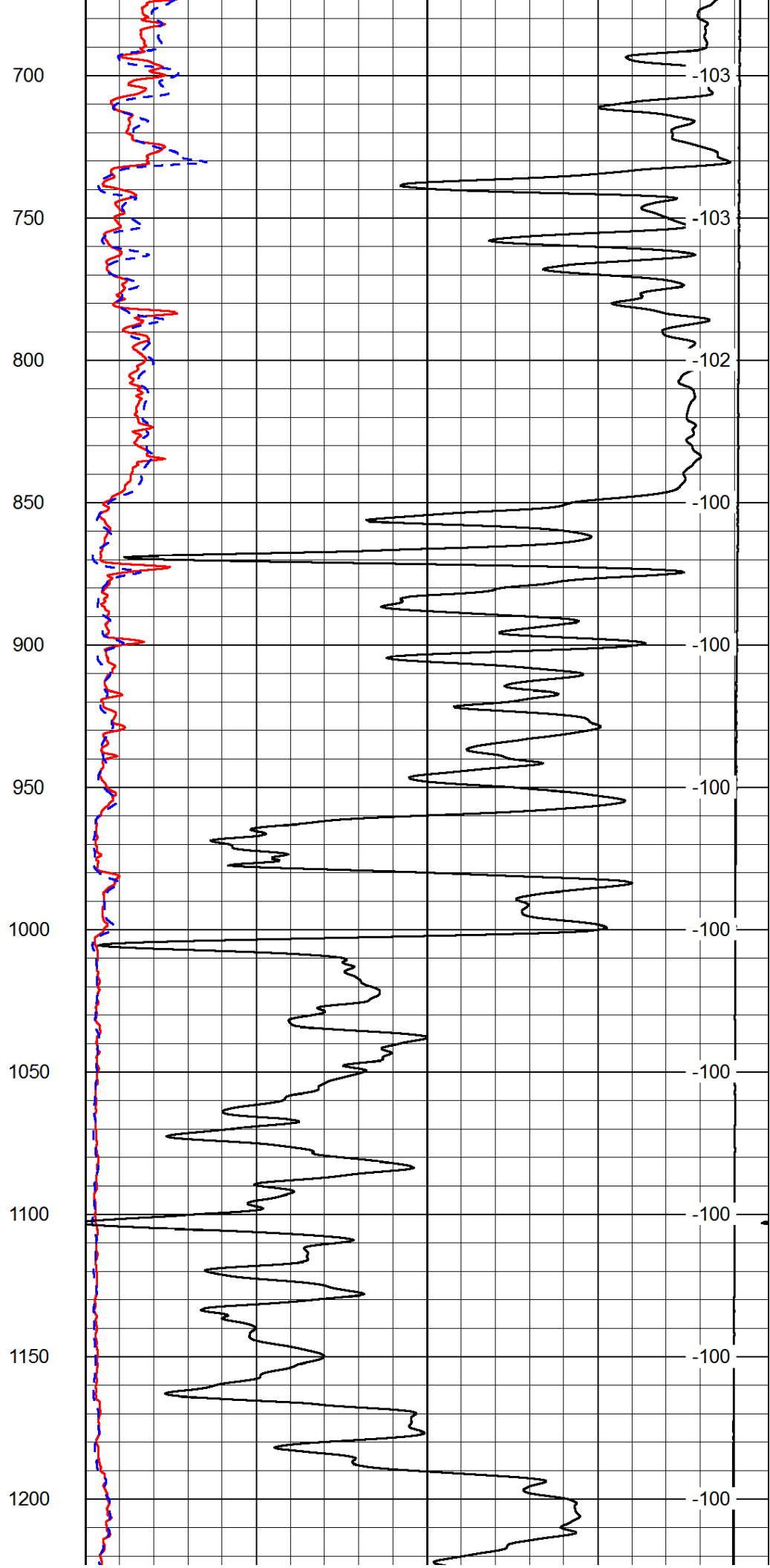
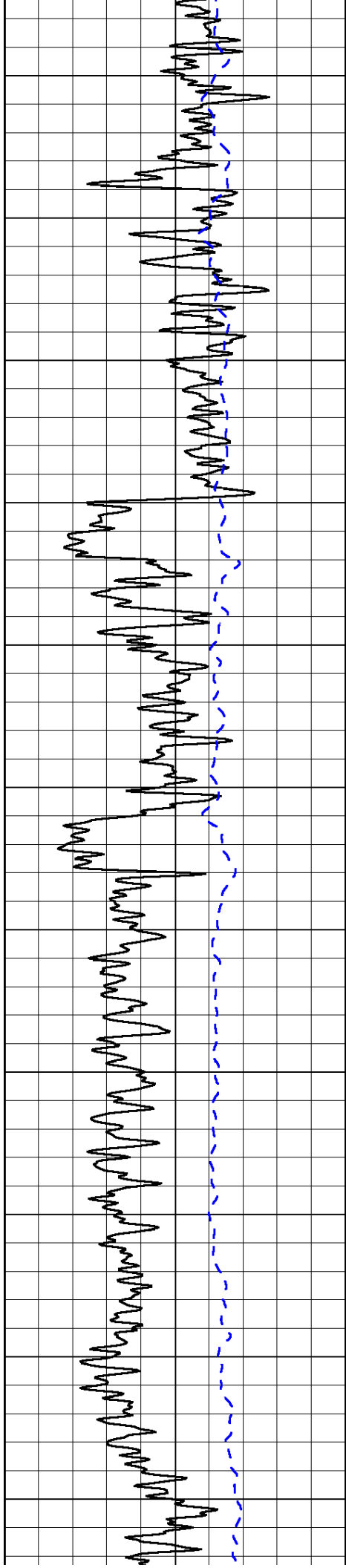
Database File: c:\warrior\data\tdi_stackhouse east #2\tdi_stackhouse_east_2hd.db
Dataset Pathname: DIL\tdistck
Presentation Format: dil2in
Dataset Creation: Thu Oct 30 19:49:44 2014
Charted by: Depth in Feet scaled 1:600

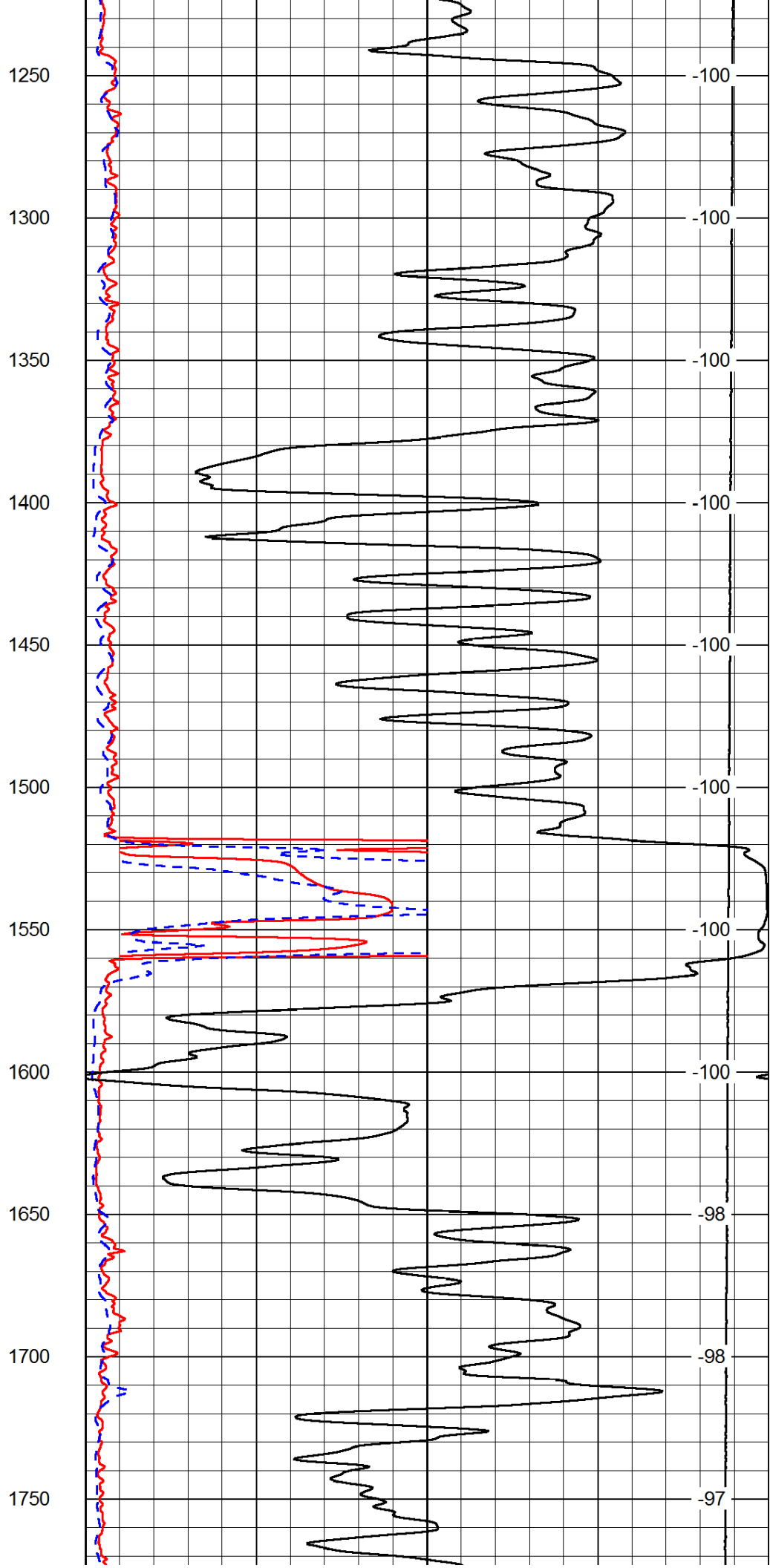
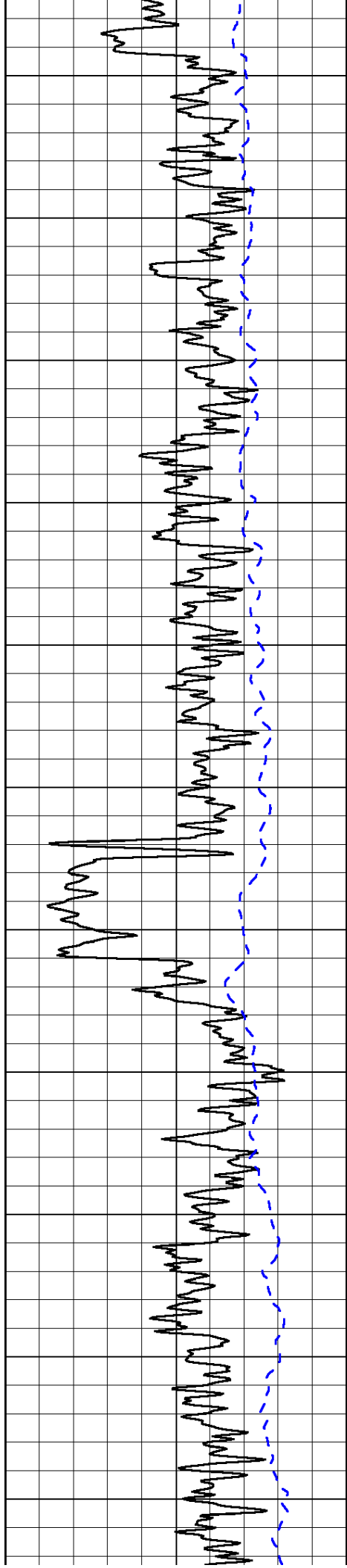
0 Gamma Ray 150
-200 SP (mV) 0

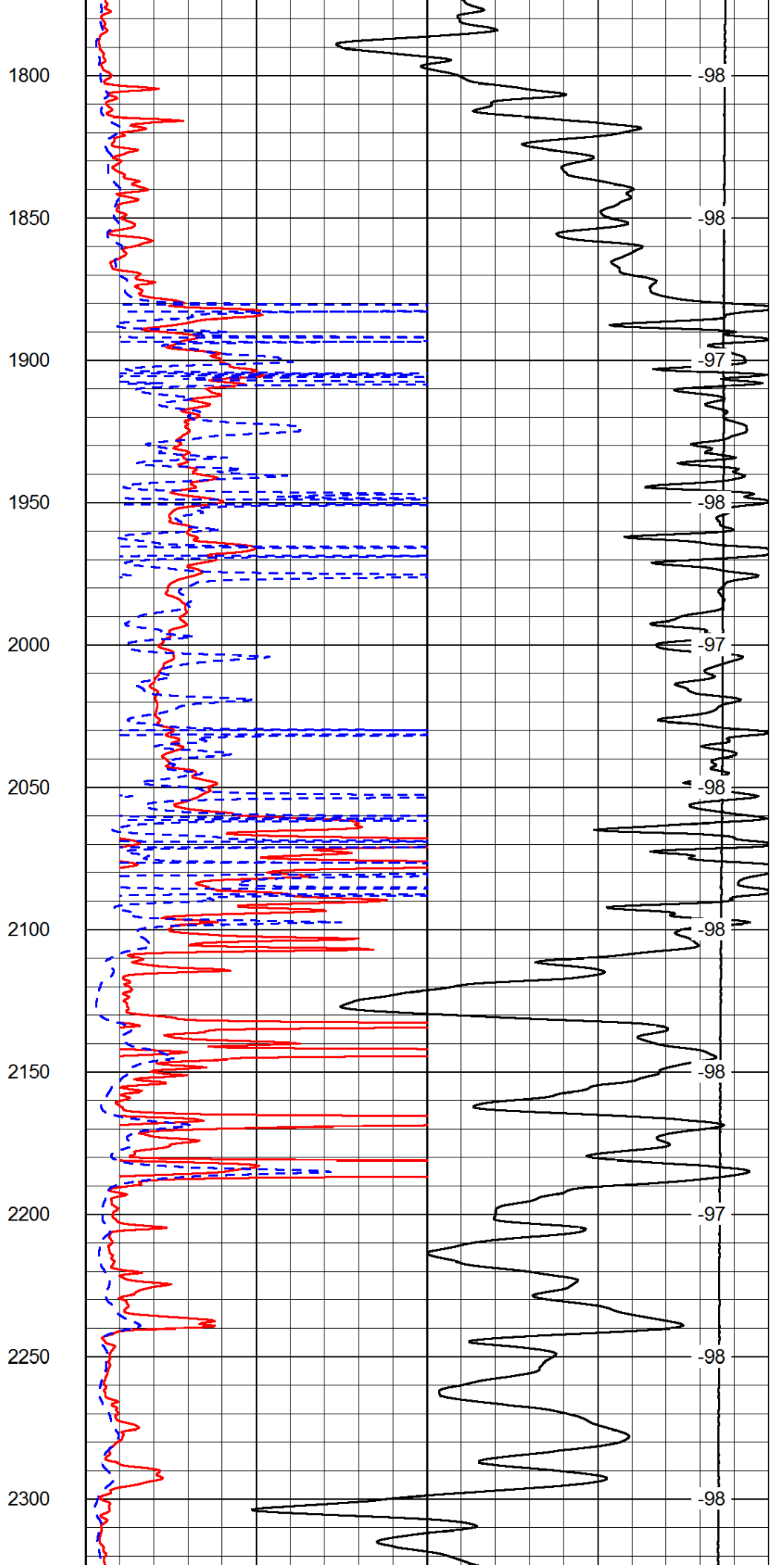
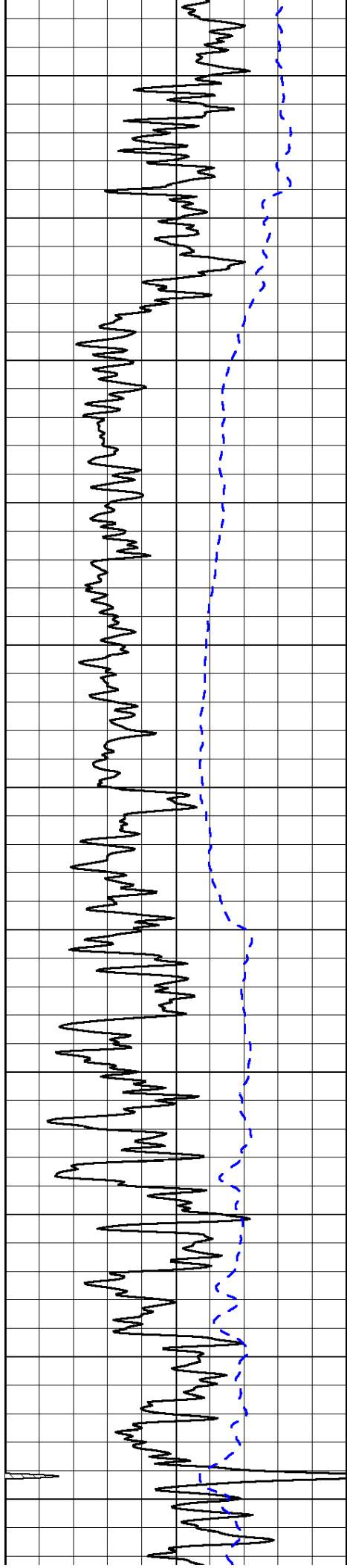
0 Shallow Resistivity 50
0 Deep Resistivity 50
1000 Conductivity 0
15000 Line Tension 0
50 Shallow Resistivity 500
50 Deep Resistivity 500

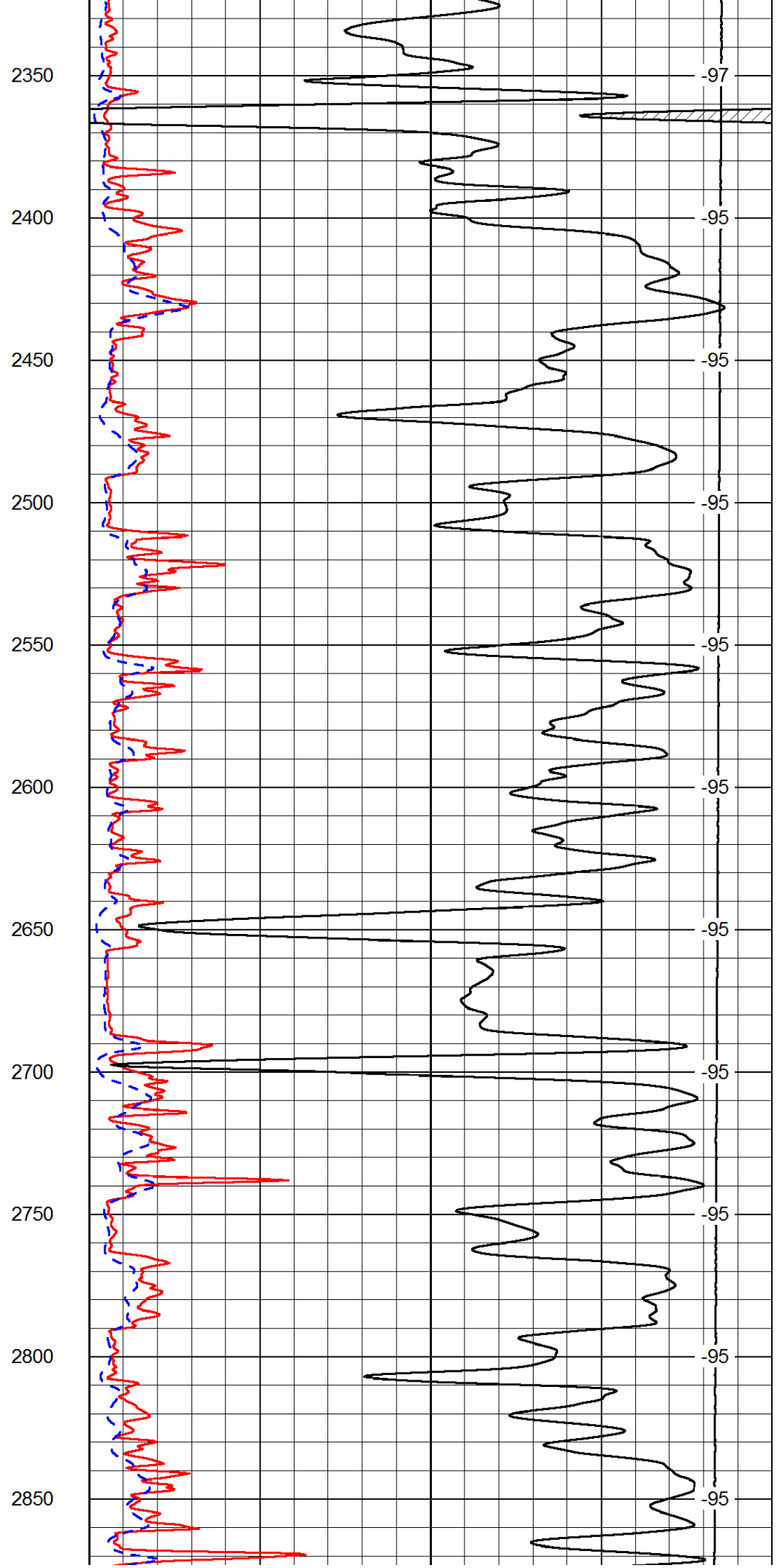
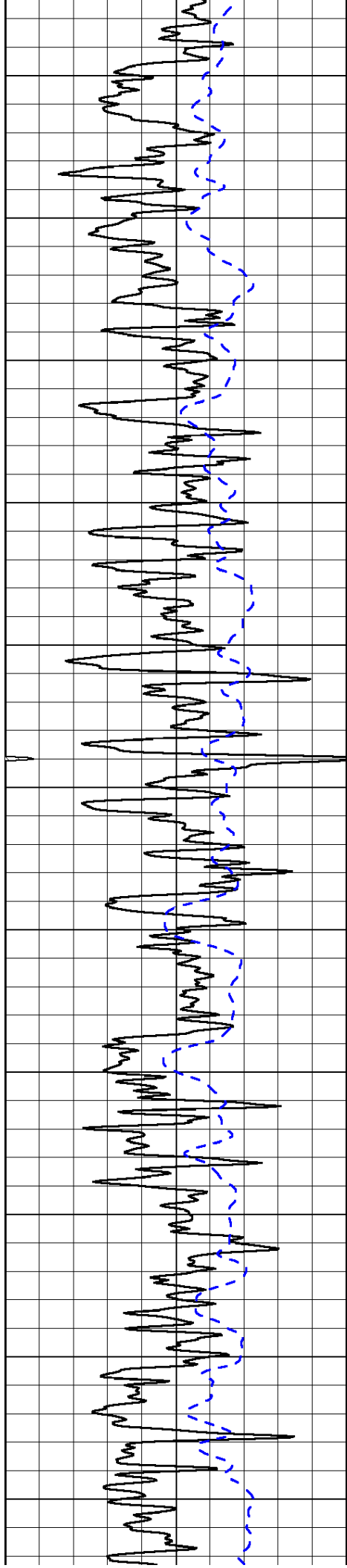
LSPD

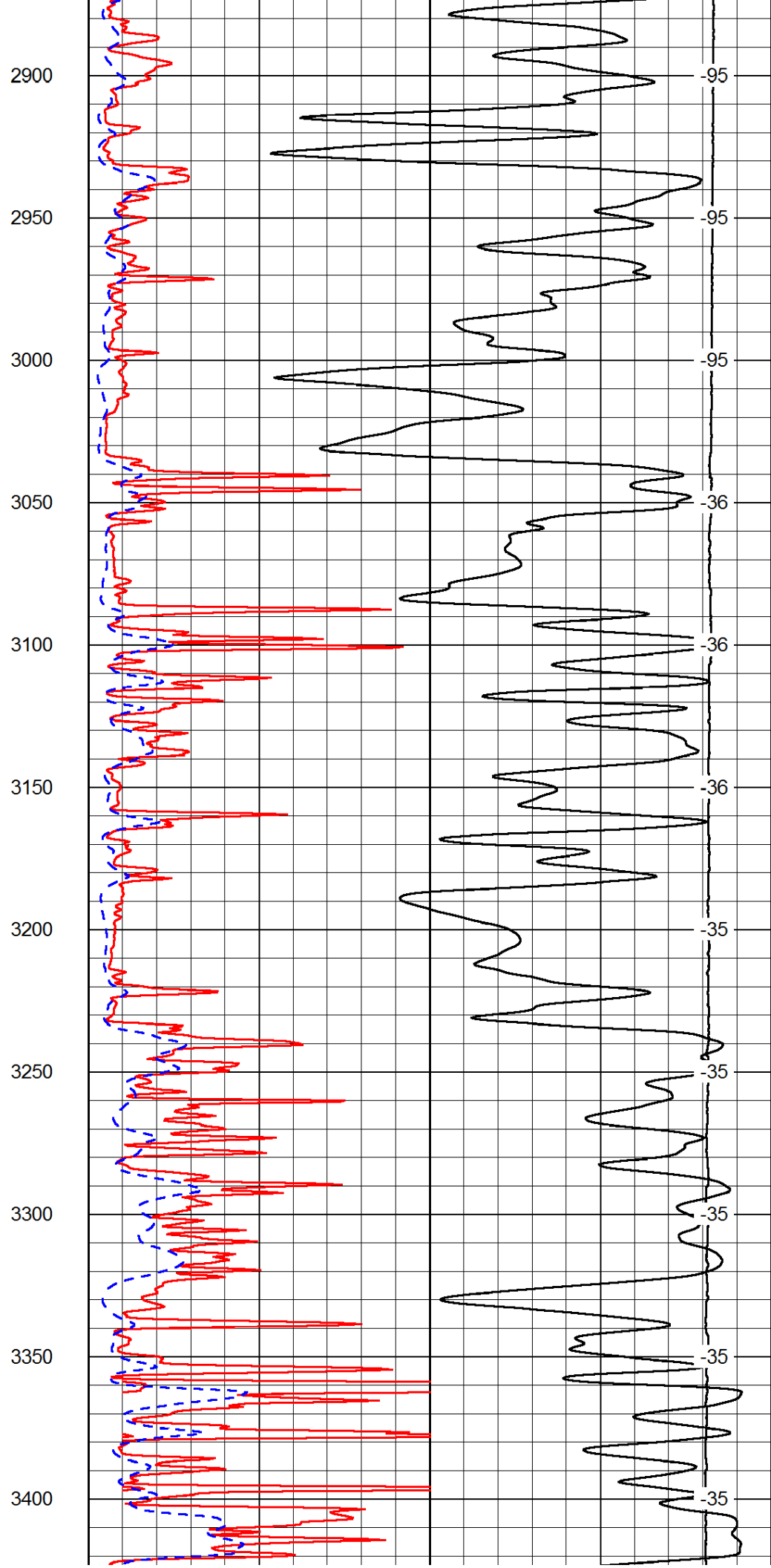
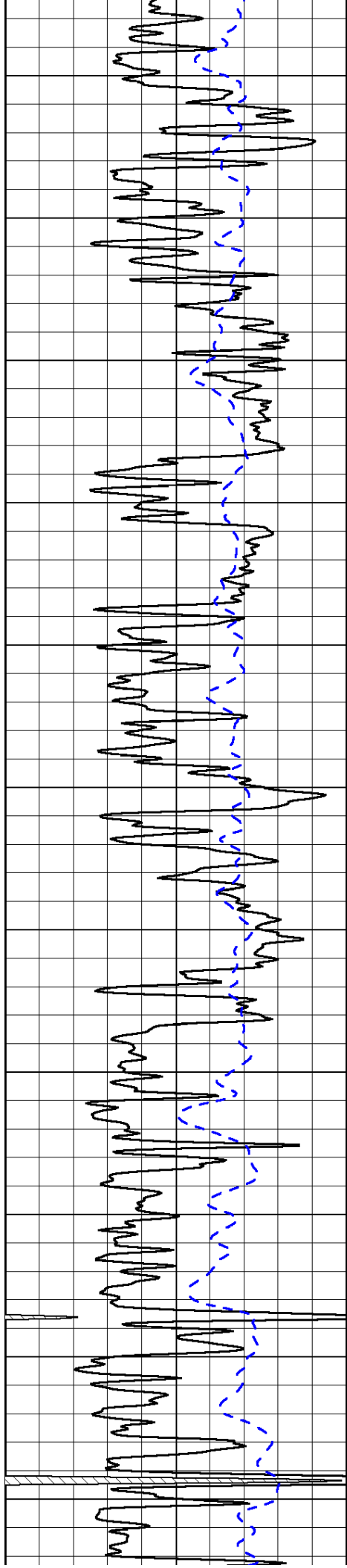


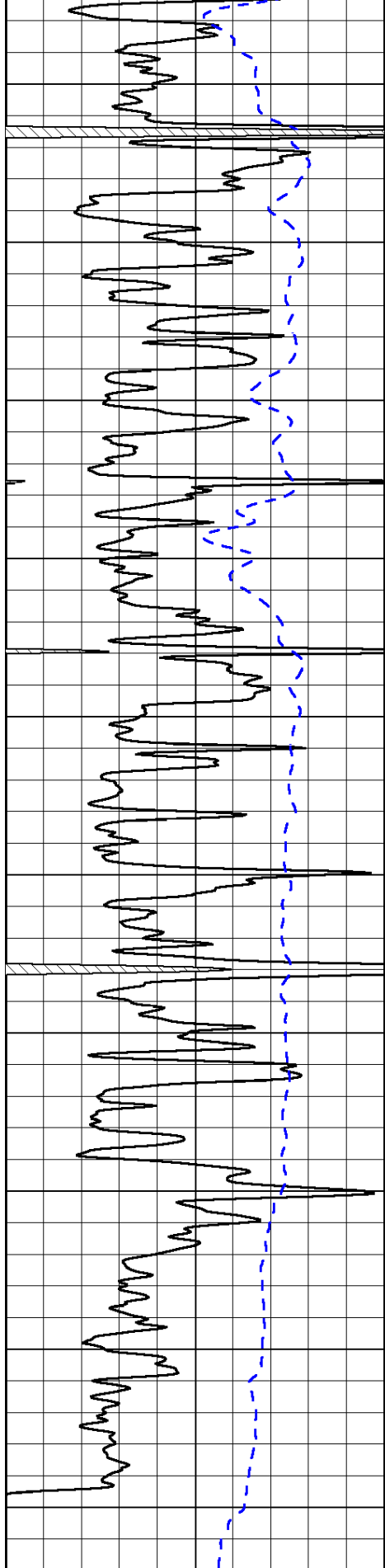




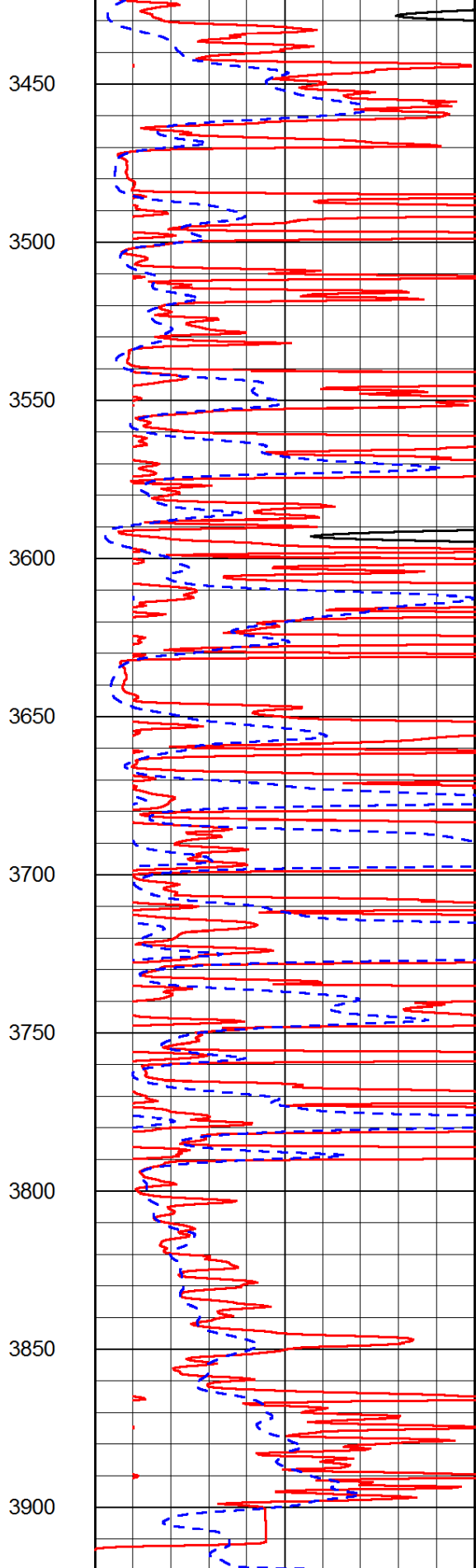




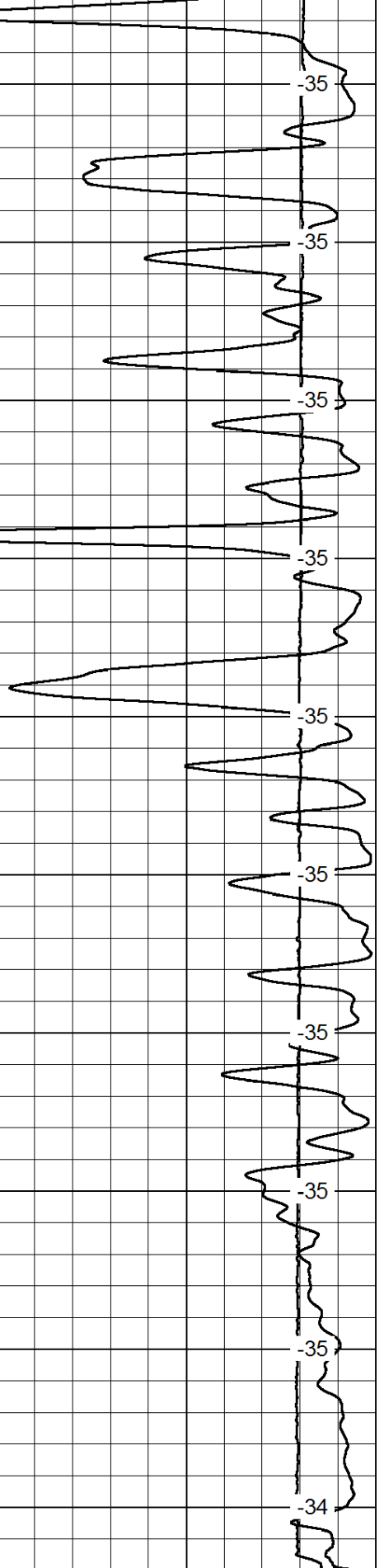




0 Gamma Ray 150
 -200 SP (mV) 0



0 Shallow Resistivity 50
 0 Deep Resistivity 50



LSPD

1000 Conductivity 0
 15000 Line Tension 0

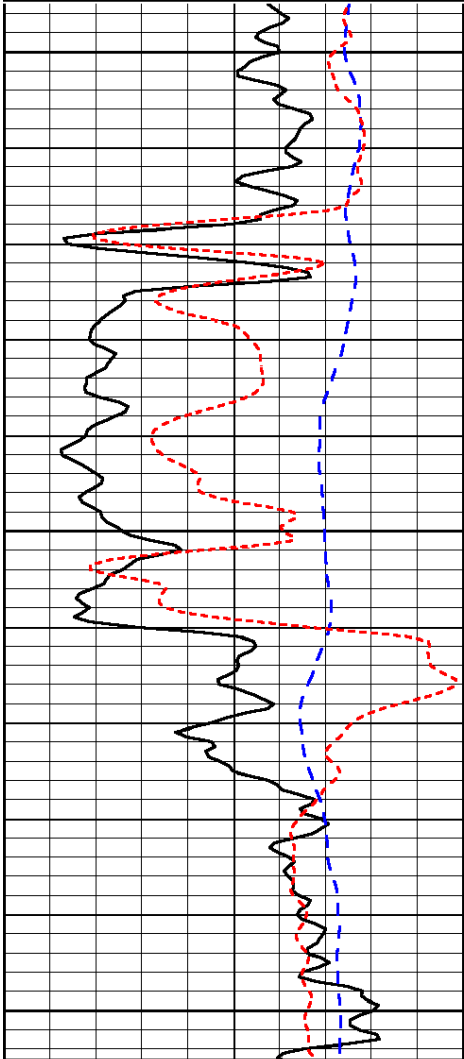
50	Shallow Resistivity	500
50	Deep Resistivity	500

Database File: c:\warrior\data\tdi_stackhouse east #2\tdi_stackhouse_east_2hd.db
 Dataset Pathname: DIL/tdistck
 Presentation Format: dil
 Dataset Creation: Thu Oct 30 19:49:44 2014
 Charted by: Depth in Feet scaled 1:240

0	Gamma Ray	150
-200	SP (mV)	0
-160	RxoRt	40

0.2	Deep Resistivity	2000
0.2	Medium Resistivity	2000
0.2	Shallow Resistivity	2000
15000	Line Tension	0

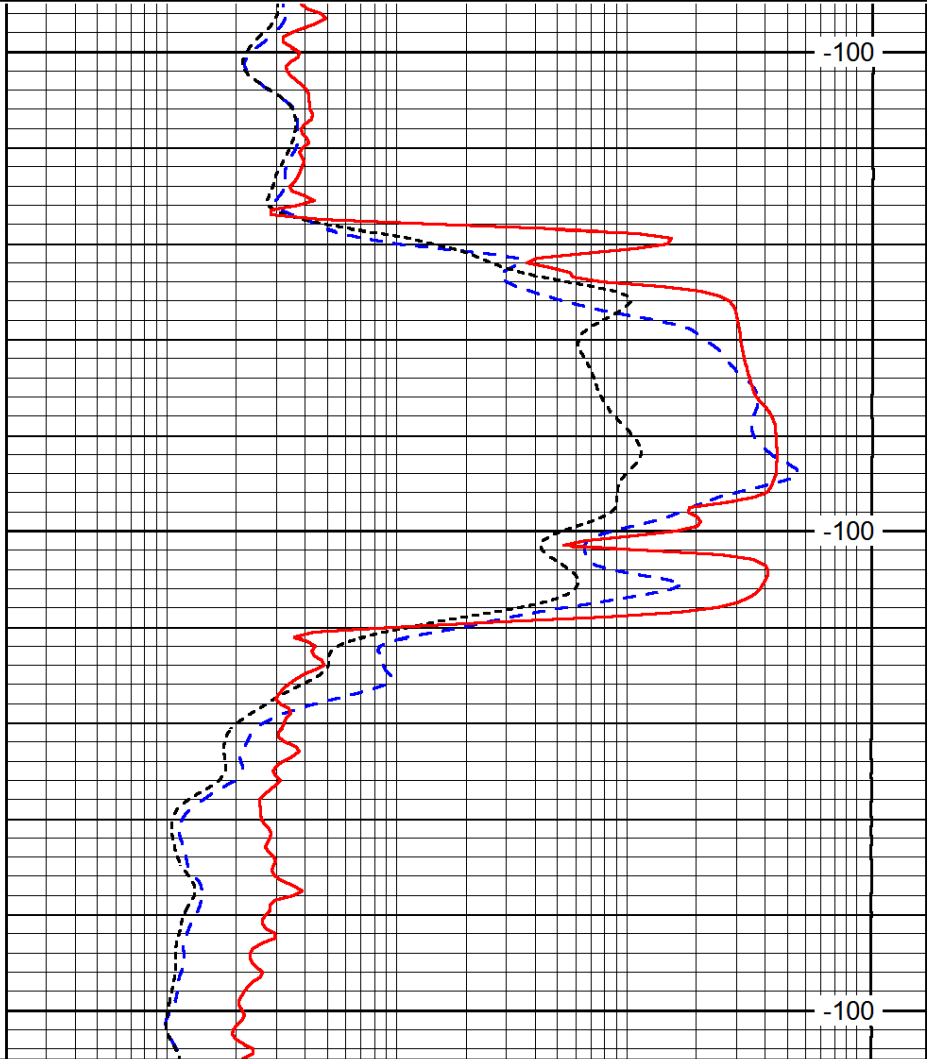
LSPD



1500

1550

1600



-100

-100

-100

0	Gamma Ray	150
-200	SP (mV)	0
-160	RxoRt	40

0.2	Deep Resistivity	2000
0.2	Medium Resistivity	2000
0.2	Shallow Resistivity	2000
15000	Line Tension	0

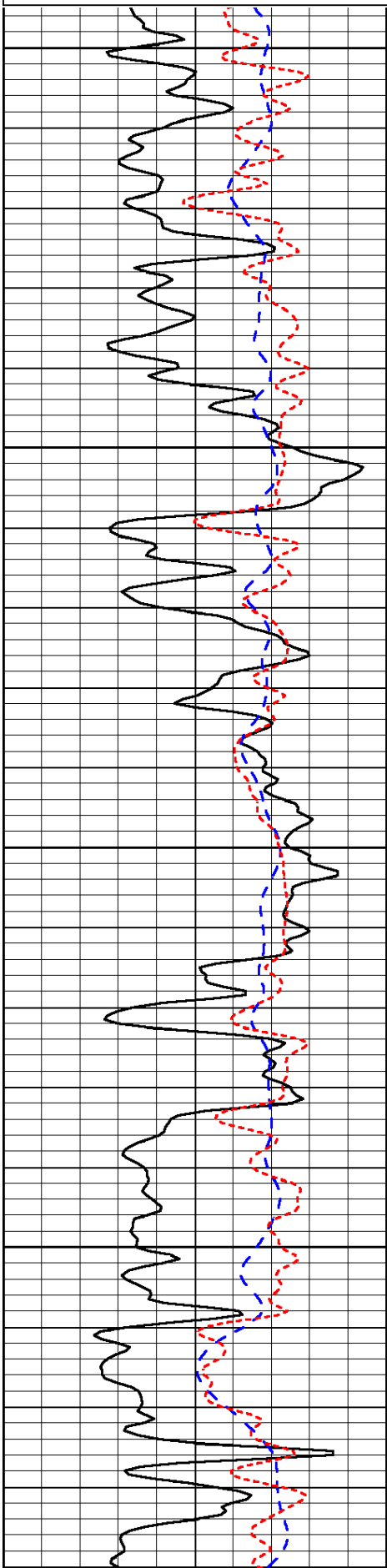
LSPD

Database File: c:\warrior\data\tdi_stackhouse east #2\tdi_stackhouse_east_2hd.db
 Dataset Pathname: DIL/tdistck
 Presentation Format: dil
 Dataset Creation: Thu Oct 30 19:49:44 2014
 Charted by: Depth in Feet scaled 1:240

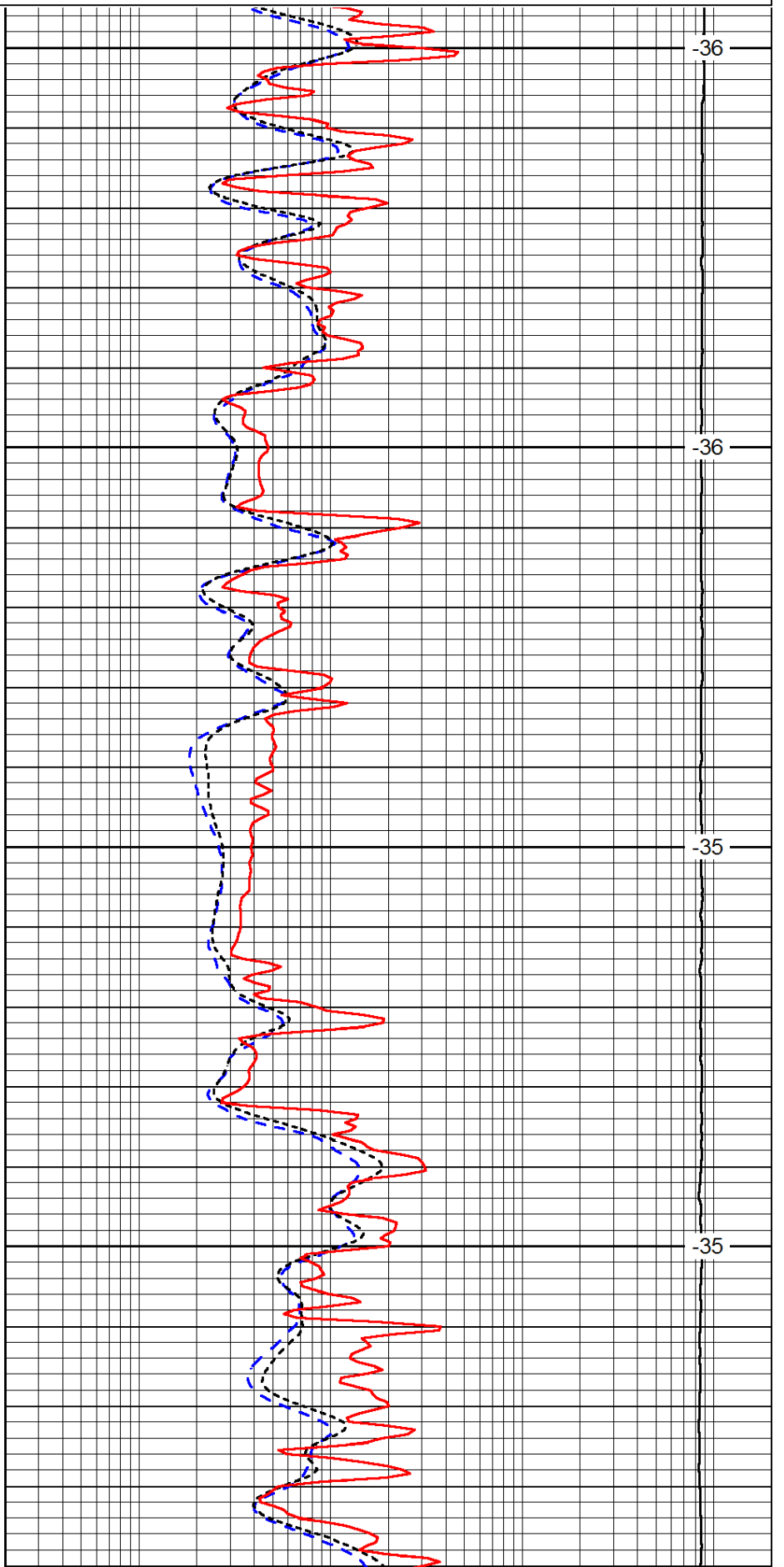
0	Gamma Ray	150
-200	SP (mV)	0
-160	RxoRt	40

0.2	Deep Resistivity	2000
0.2	Medium Resistivity	2000
0.2	Shallow Resistivity	2000
15000	Line Tension	0

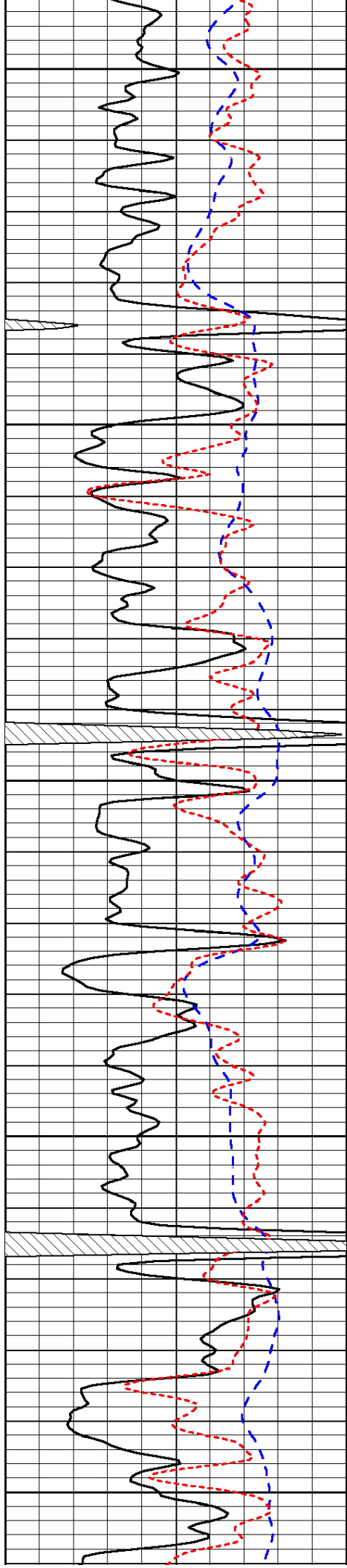
LSPD



3100
3150
3200
3250



-36
-36
-35
-35



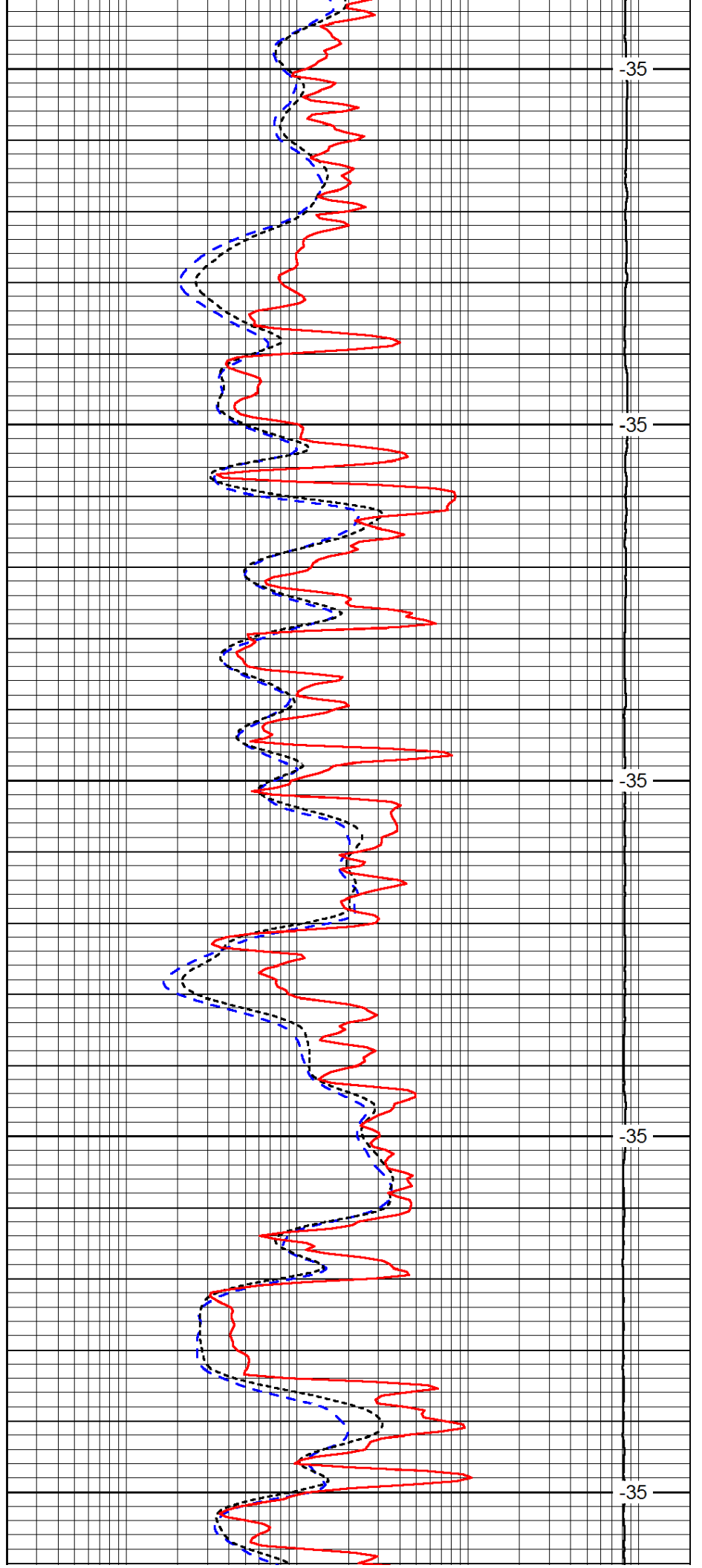
3300

3350

3400

3450

3500



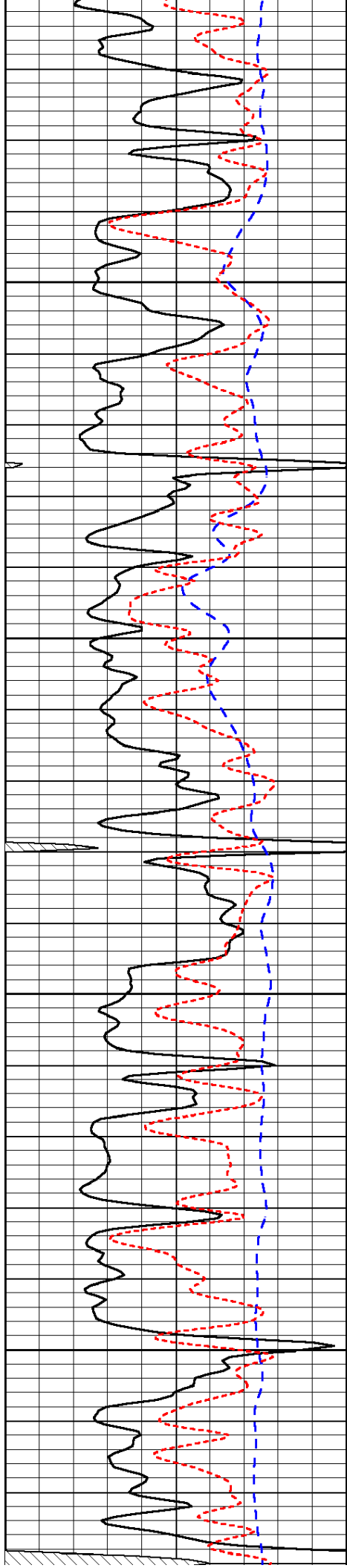
-35

-35

-35

-35

-35

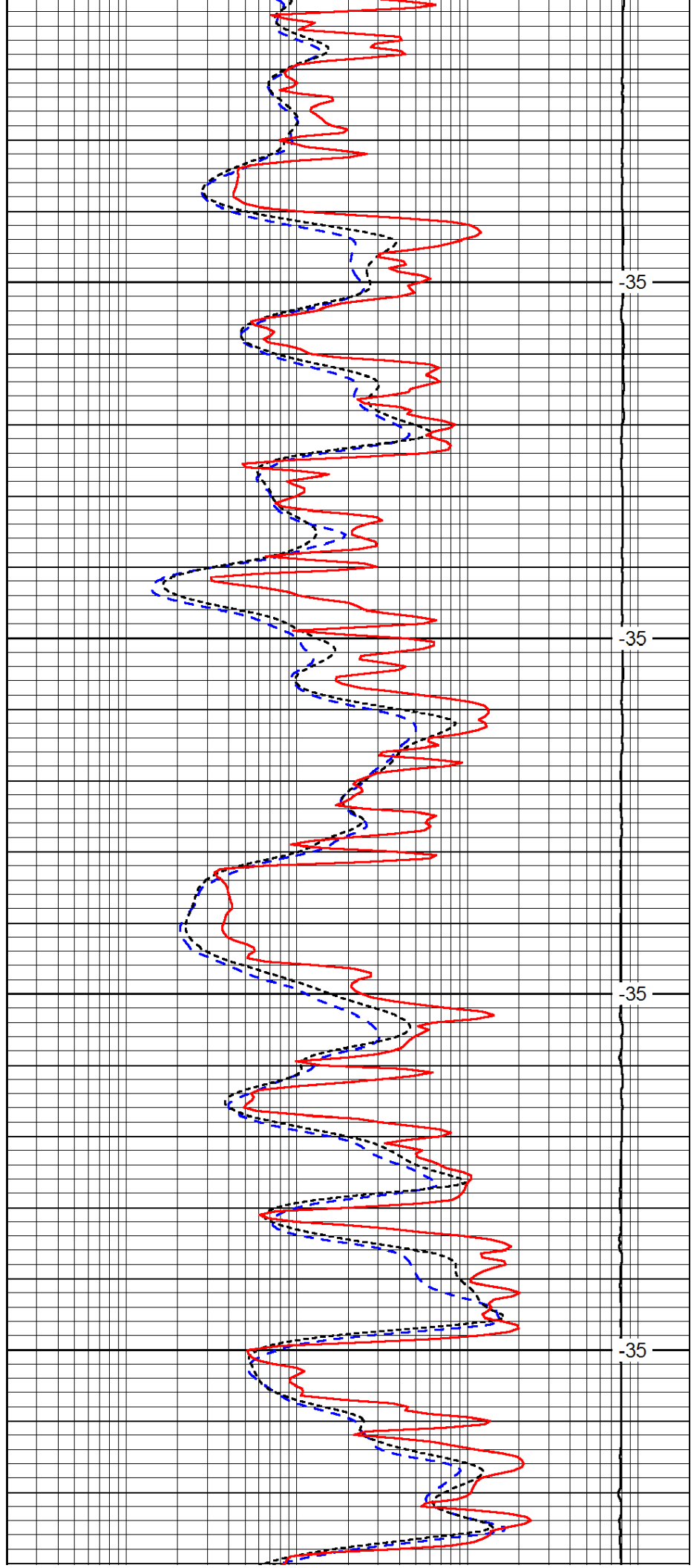


3550

3600

3650

3700

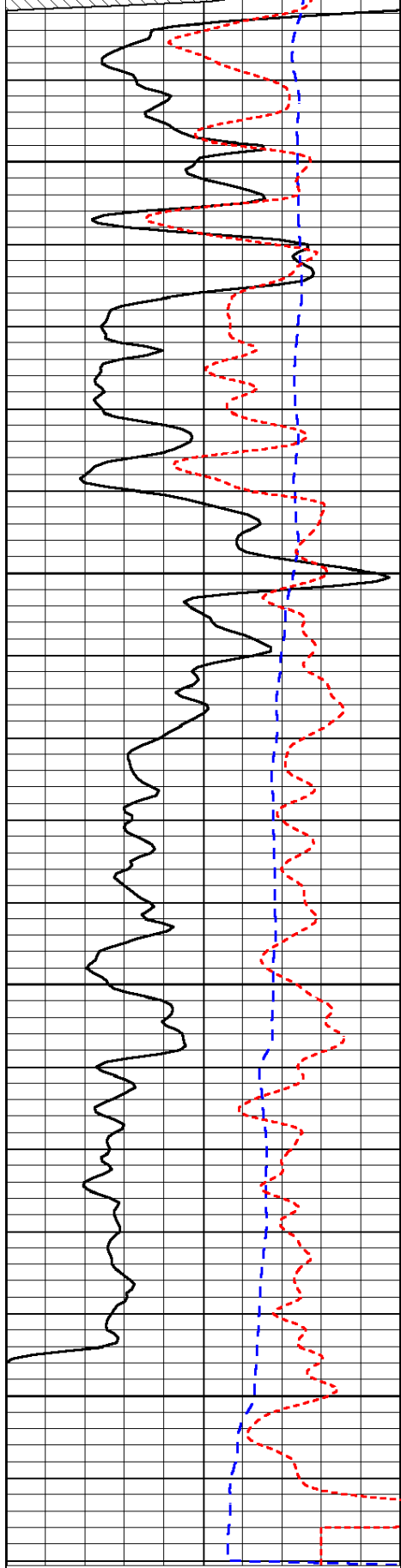


-35

-35

-35

-35



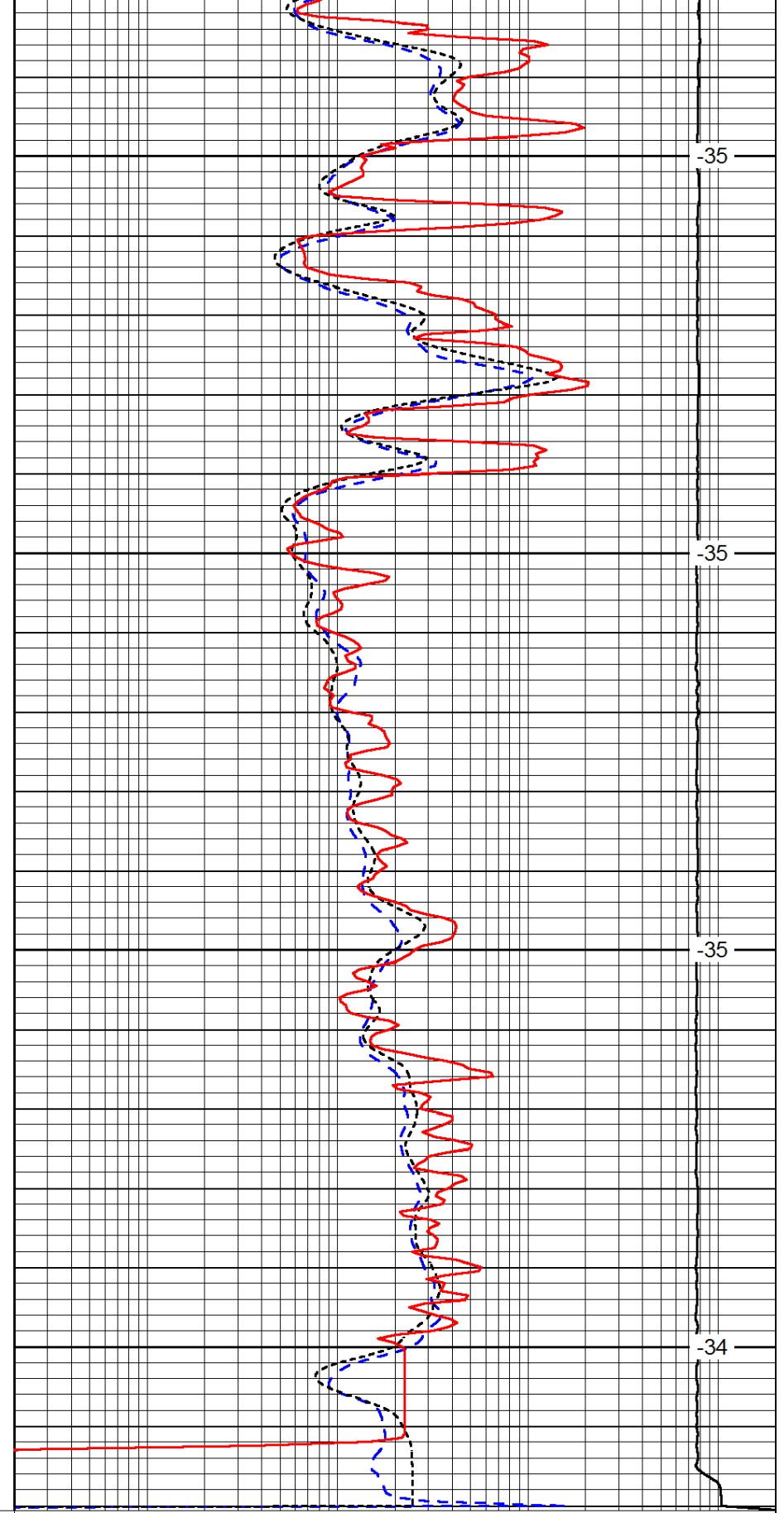
0	Gamma Ray	150
-200	SP (mV)	0
-160	RxoRt	40

3750

3800

3850

3900



35

35

35

34

0.2	Deep Resistivity	2000
0.2	Medium Resistivity	2000
0.2	Shallow Resistivity	2000
15000	Line Tension	0

LSPD