



Pioneer Energy Services

Dual Induction Log

15-101-22512-00-00

API No.	Company Larson Engineering, Inc.		
	Well Hineman Ranch #1-31		
	Field Wildcat		
	County Lane	State	Kansas
	Location 330' FSL & 2,310' FEL		
	Sec: 31	Twp: 18S	Rge: 28W
Permanent Datum	Ground Level	Elevation 2739	
Log Measured From	Kelly Bushing	7 Ft. Above Perm. Datum	
Drilling Measured From	Kelly Bushing	Elevation 2746	
		D.F. 2739	
		G.L. 2739	

Date	5/29/2014
Run Number	One
Depth Driller	4648
Depth Logger	4646
Bottom Logged Interval	4645
Top Log Interval	250
Casing Driller	8.625 @ 262
Casing Logger	259
Bit Size	7.875
Type Fluid in Hole	Chemical
Salinity, ppm CL	2400
Density / Viscosity	9.1 51
pH / Fluid Loss	10.5 7.2
Source of Sample	Flowline
Rm @ Meas. Temp	.70 @ 82
Rmf @ Meas. Temp	.53 @ 82
Rmc @ Meas. Temp	.95 @ 82
Source of Rmf / Rmc	Charts
Rm @ BHT	.47 @ 122
Operating Rig Time	4 Hours
Max Rec. Temp. F	122
Equipment Number	108
Location	Hays
Recorded By	J. Long
Witnessed By	Vern Schrag

<<< Fold Here >>>

All interpretations are opinions based on inferences from electrical or other measurements and we cannot and do not guarantee the accuracy or correctness of any interpretation, and we shall not, except in the case of gross or willful negligence on our part, be liable or responsible for any loss, costs, damages, or expenses incurred or sustained by anyone resulting from any interpretation made by any of our officers, agents or employees. These interpretations are also subject to our general terms and conditions set out in our current Price Schedule.

Comments

Thank you for using Pioneer Energy Services
www.pioneerenergy.com
 785 625 3858

 Dighton Ks, 3 South to 120 Rd, 1/2 East, North Into

Database File:	c:\warrior\data\larsen_hineman ranch #1-31\larsen_hinemanranch_1-31hd.db
Dataset Pathname:	DIL\larsstck
Presentation Format:	dil2in
Dataset Creation:	Thu May 29 14:13:17 2014
Charted by:	Depth in Feet scaled 1:600

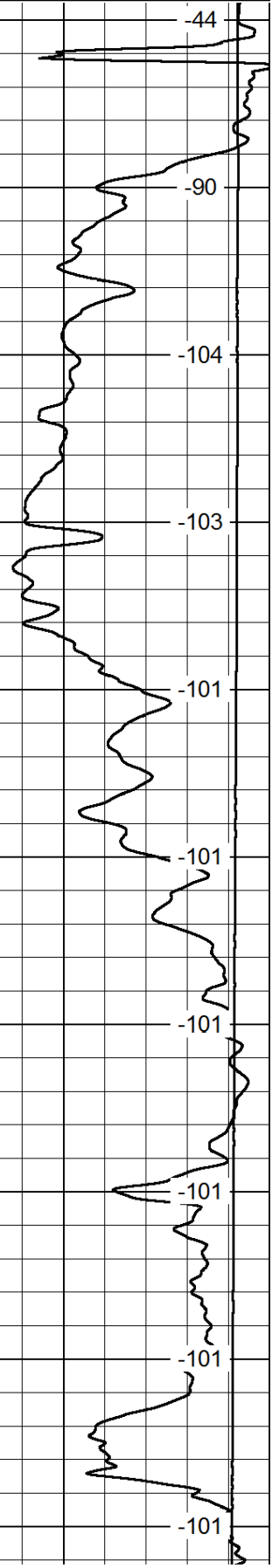
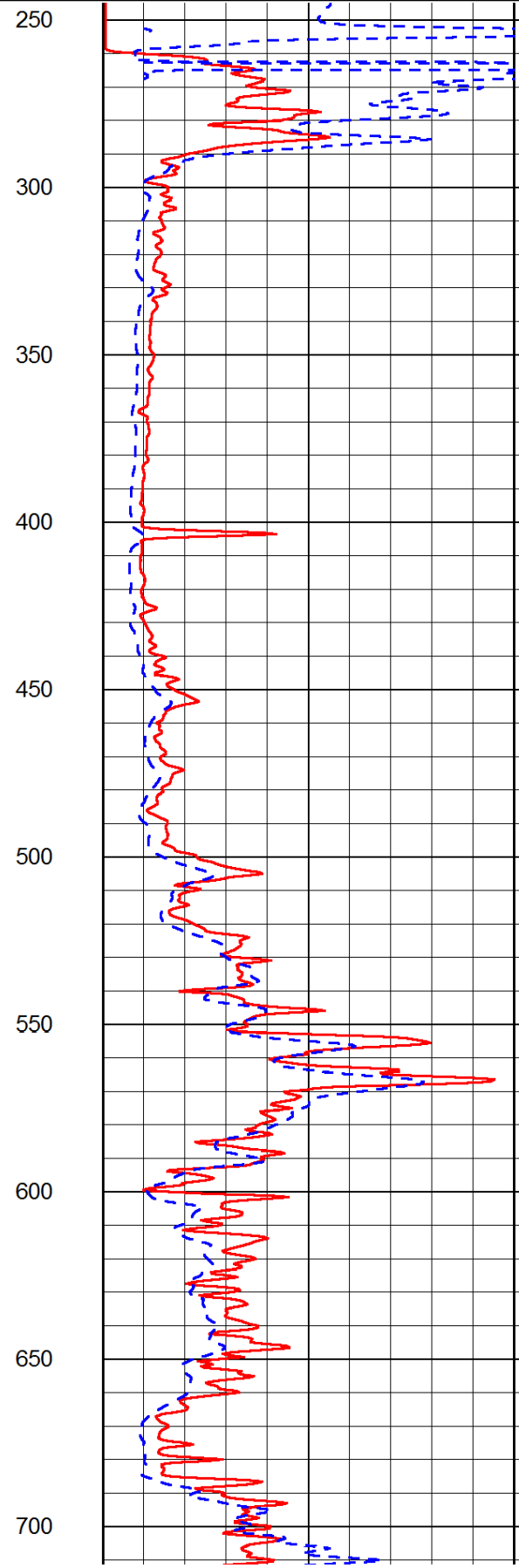
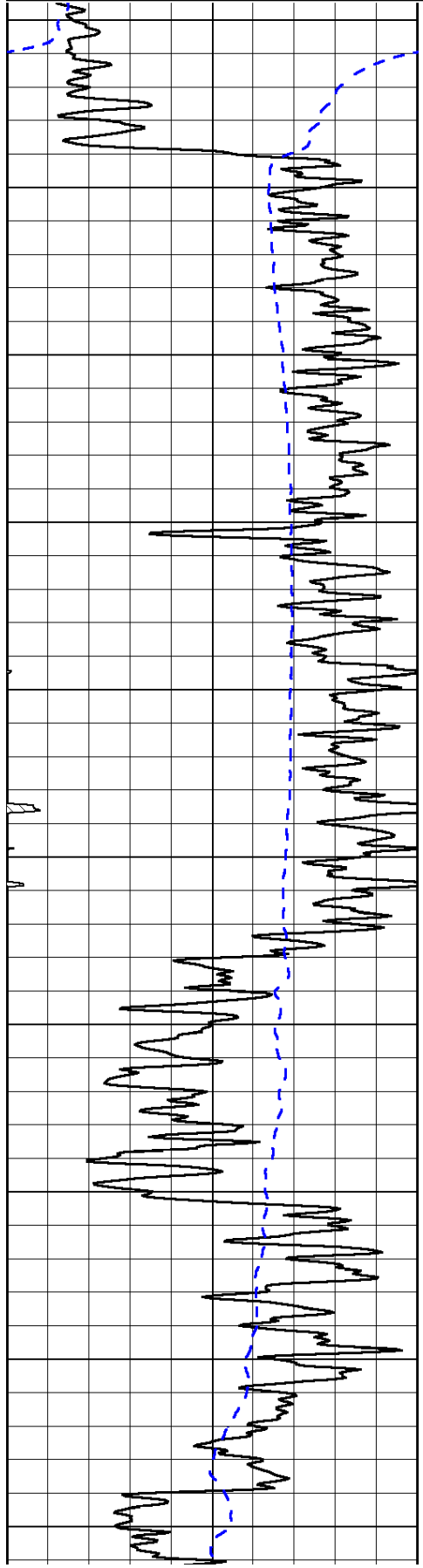
0	Gamma Ray	150
-200	SP (mV)	0

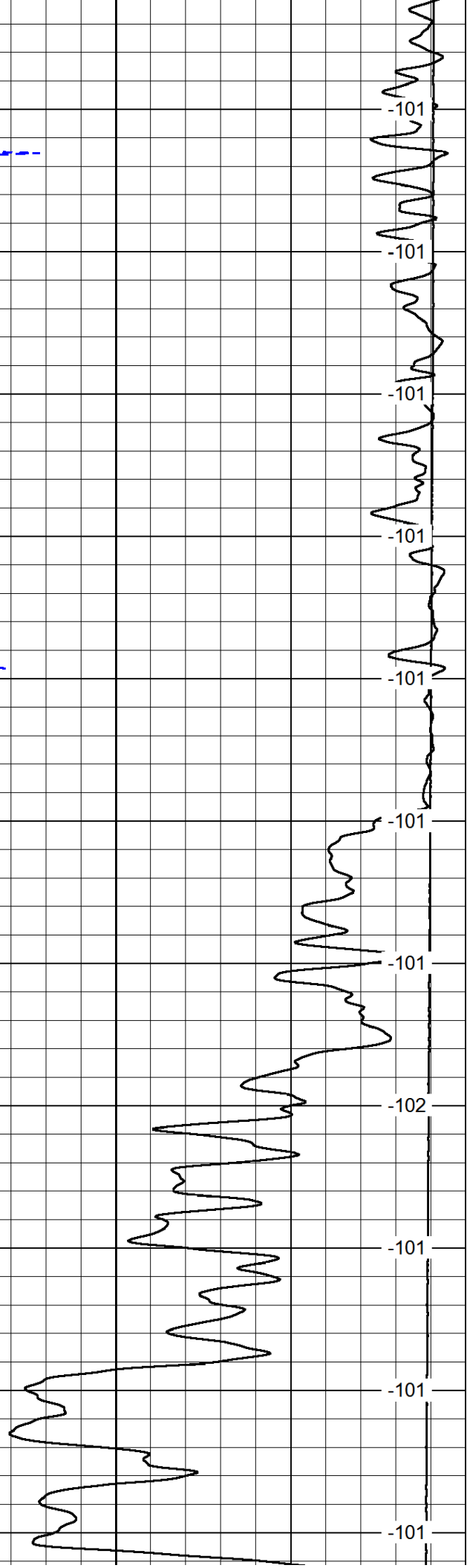
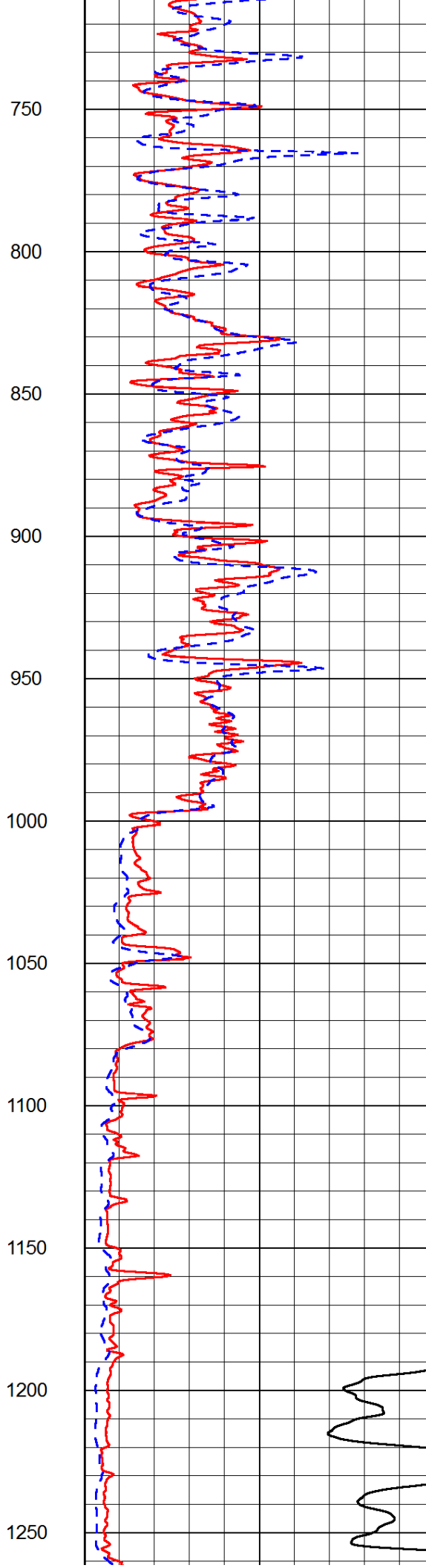
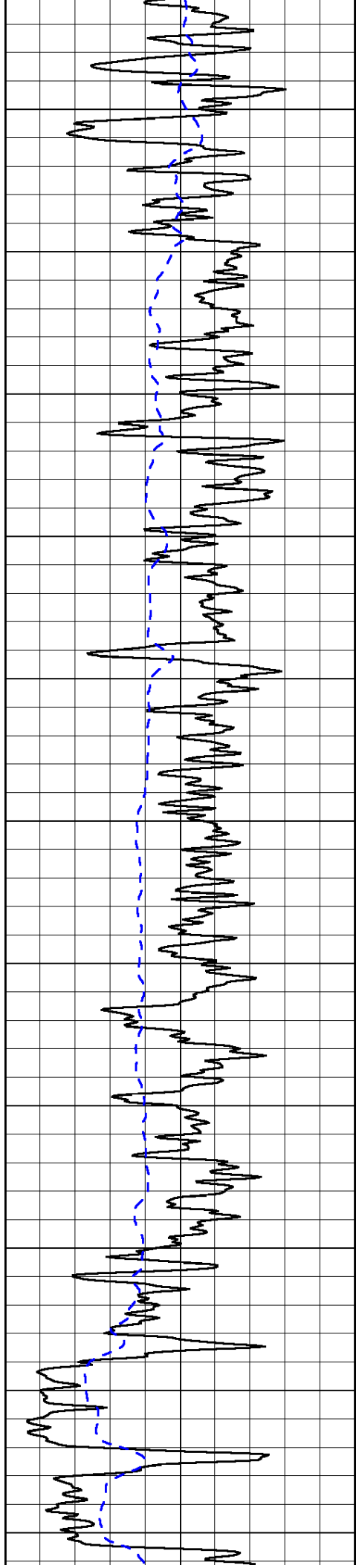
0	Shallow Resistivity	50
0	Deep Resistivity	50

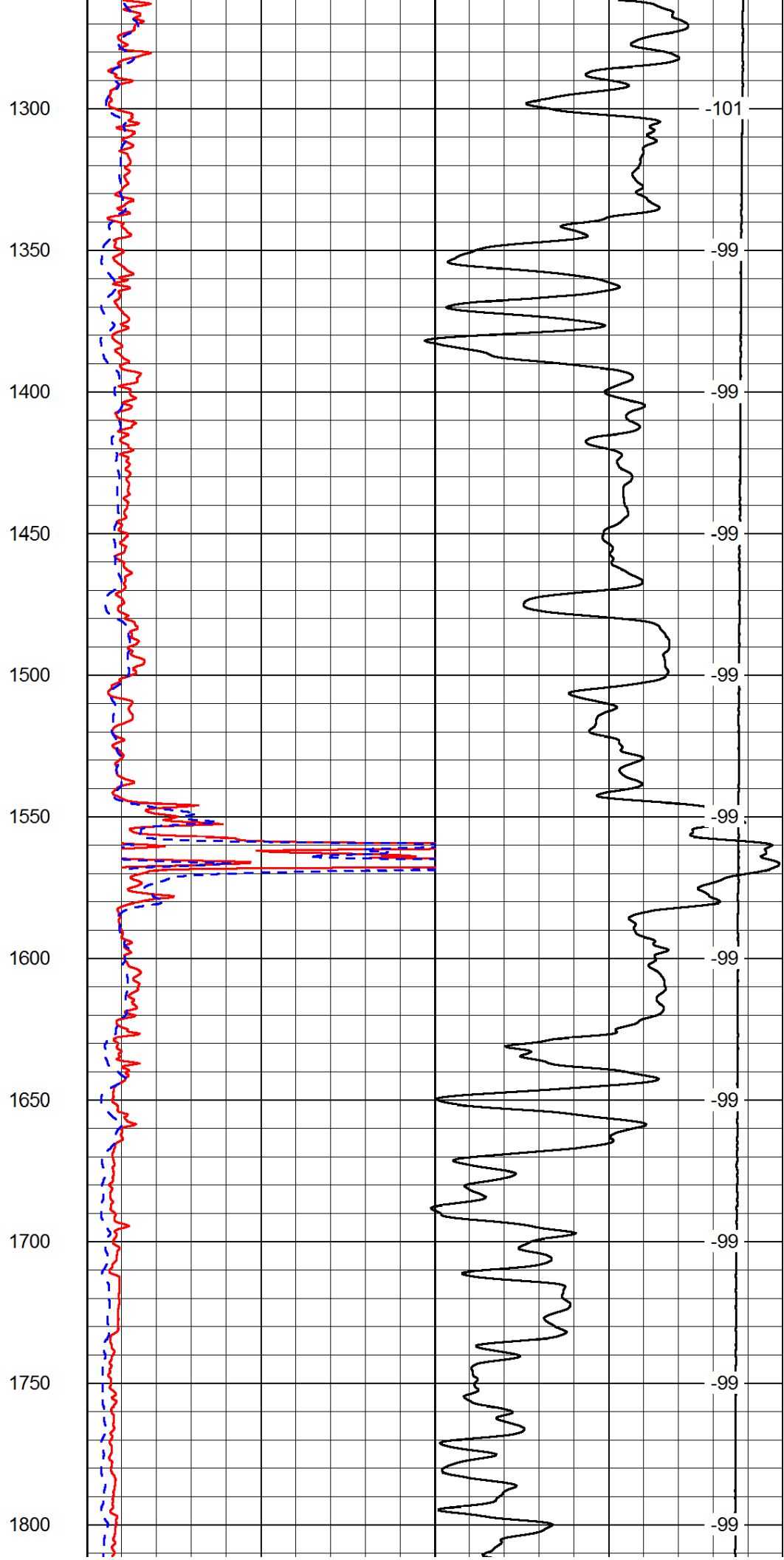
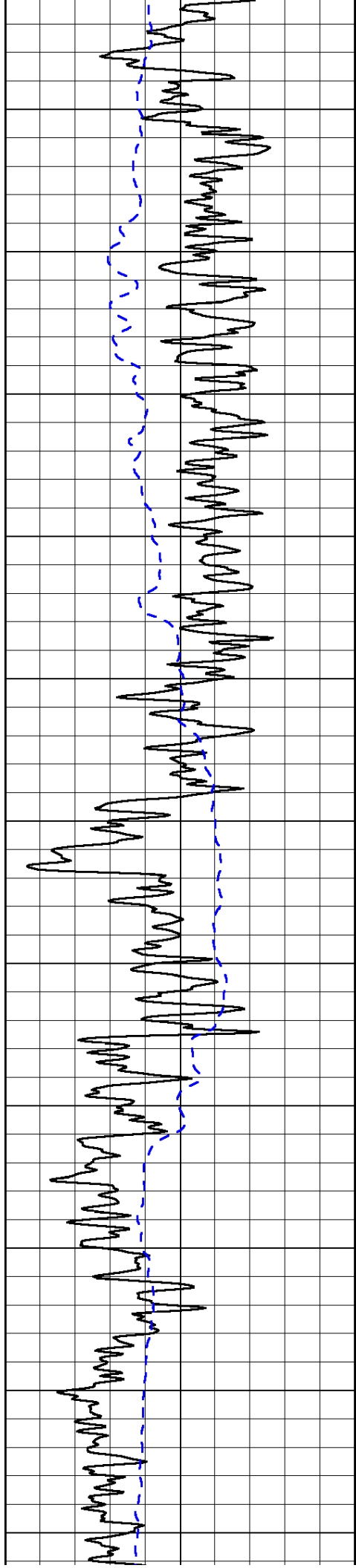
LSPD

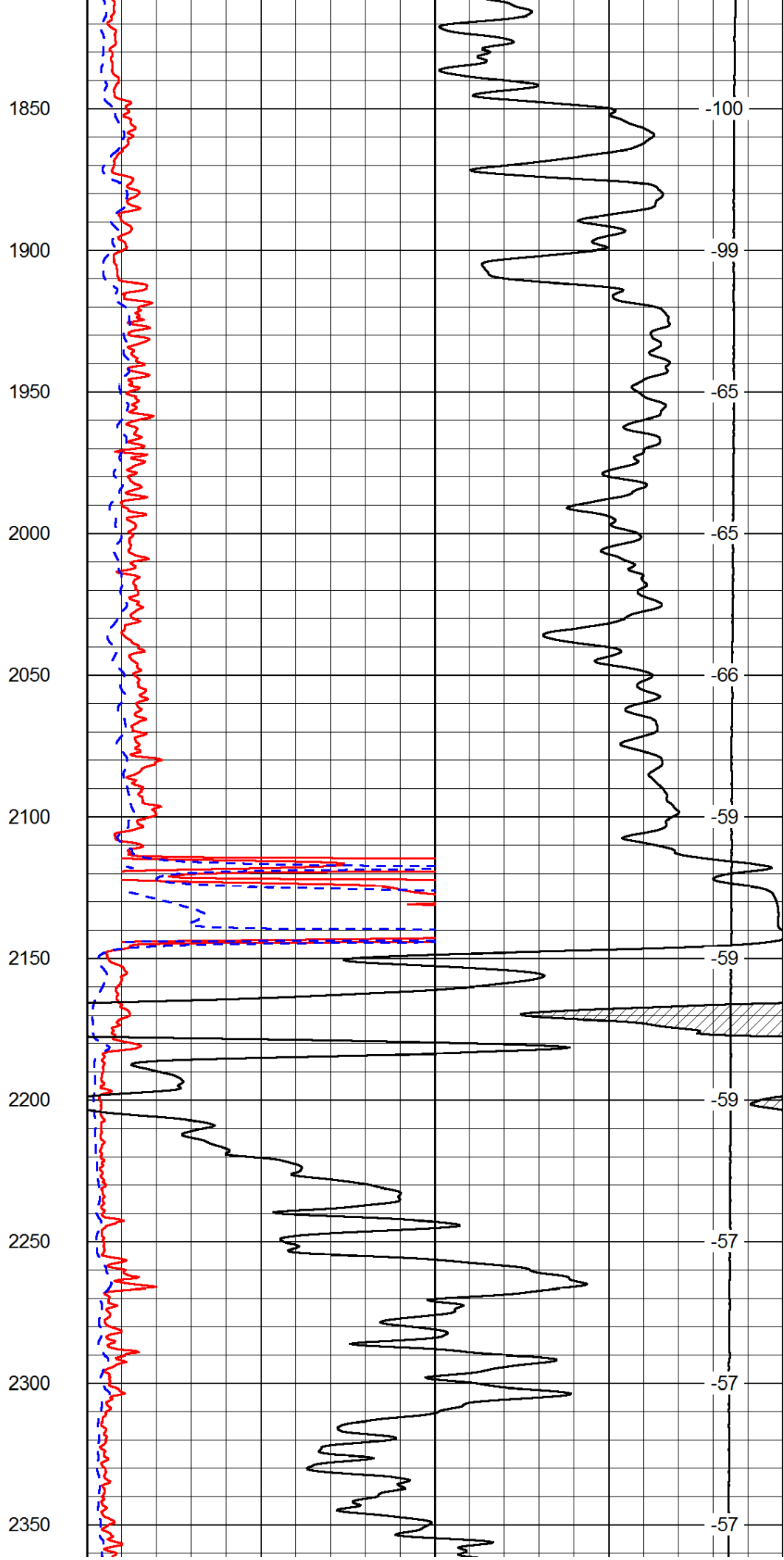
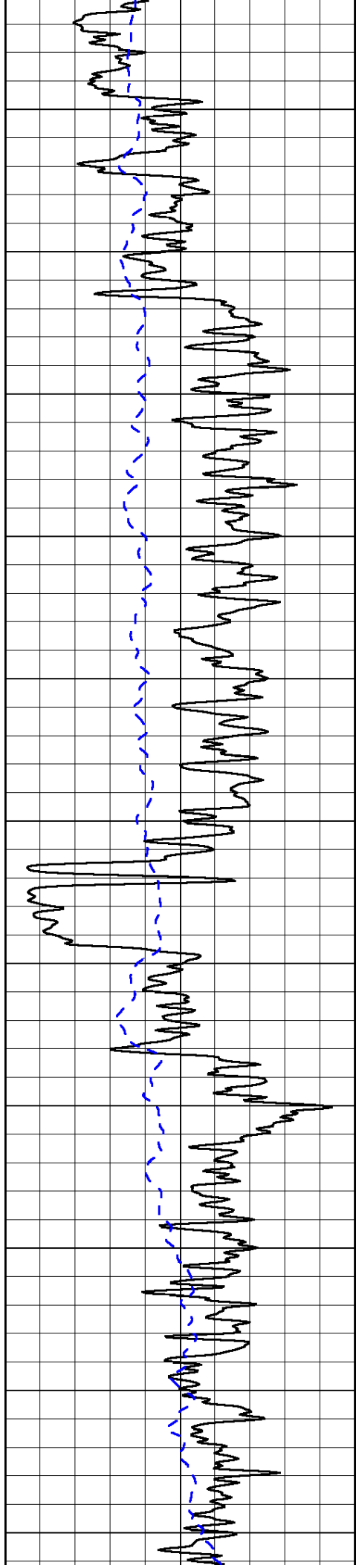
1000	Conductivity	0
15000	Line Tension	0

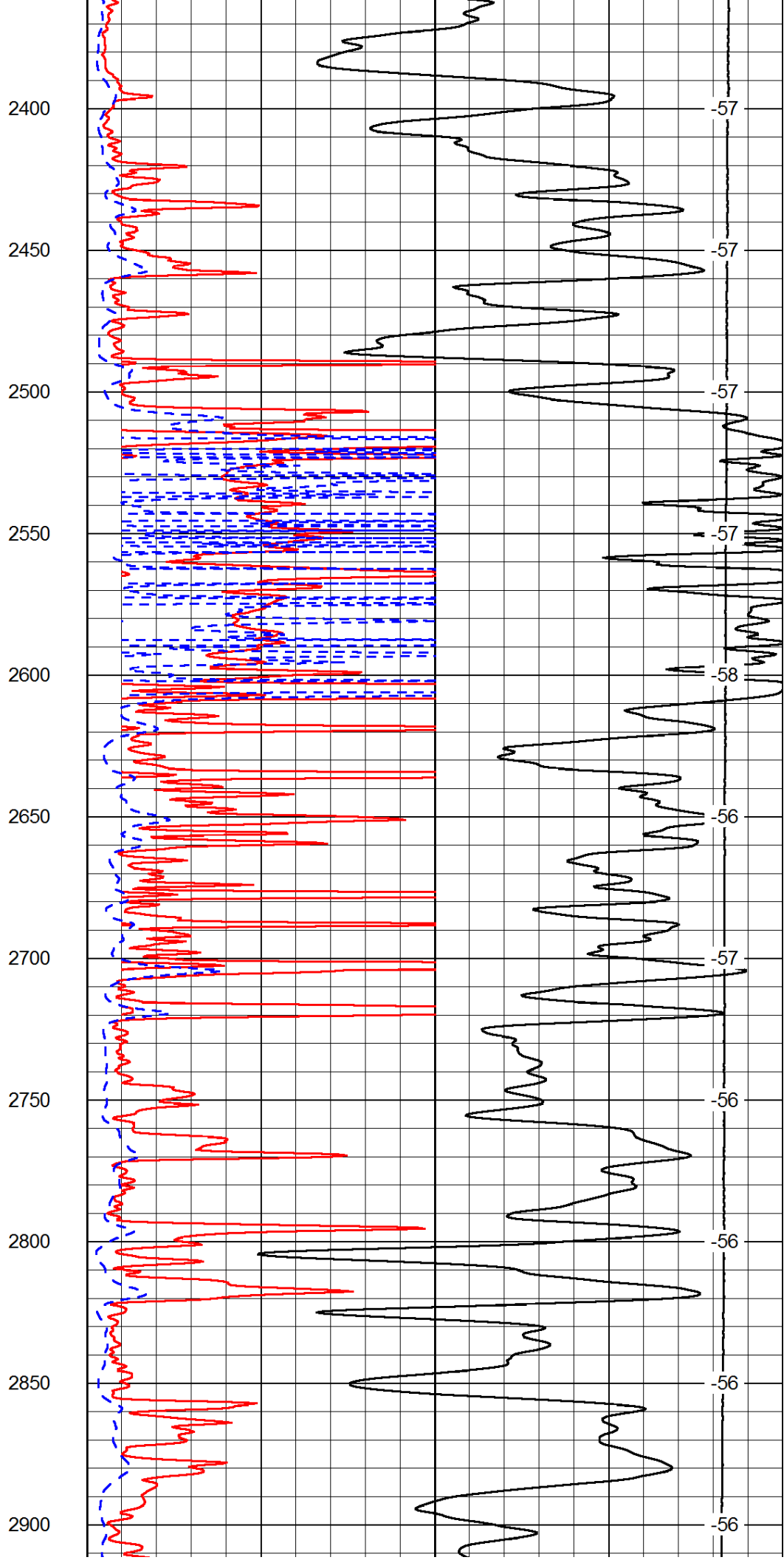
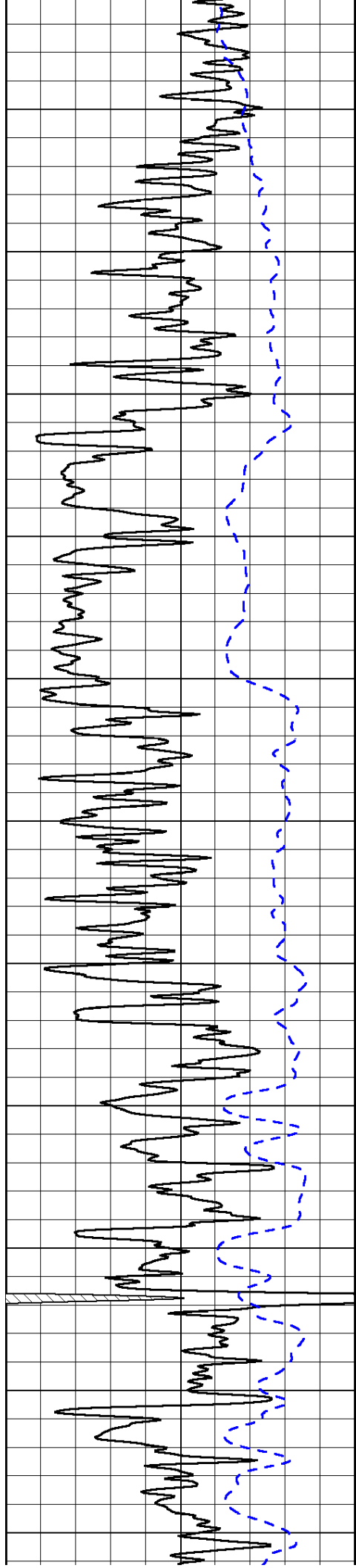
50	Shallow Resistivity	500
50	Deep Resistivity	500

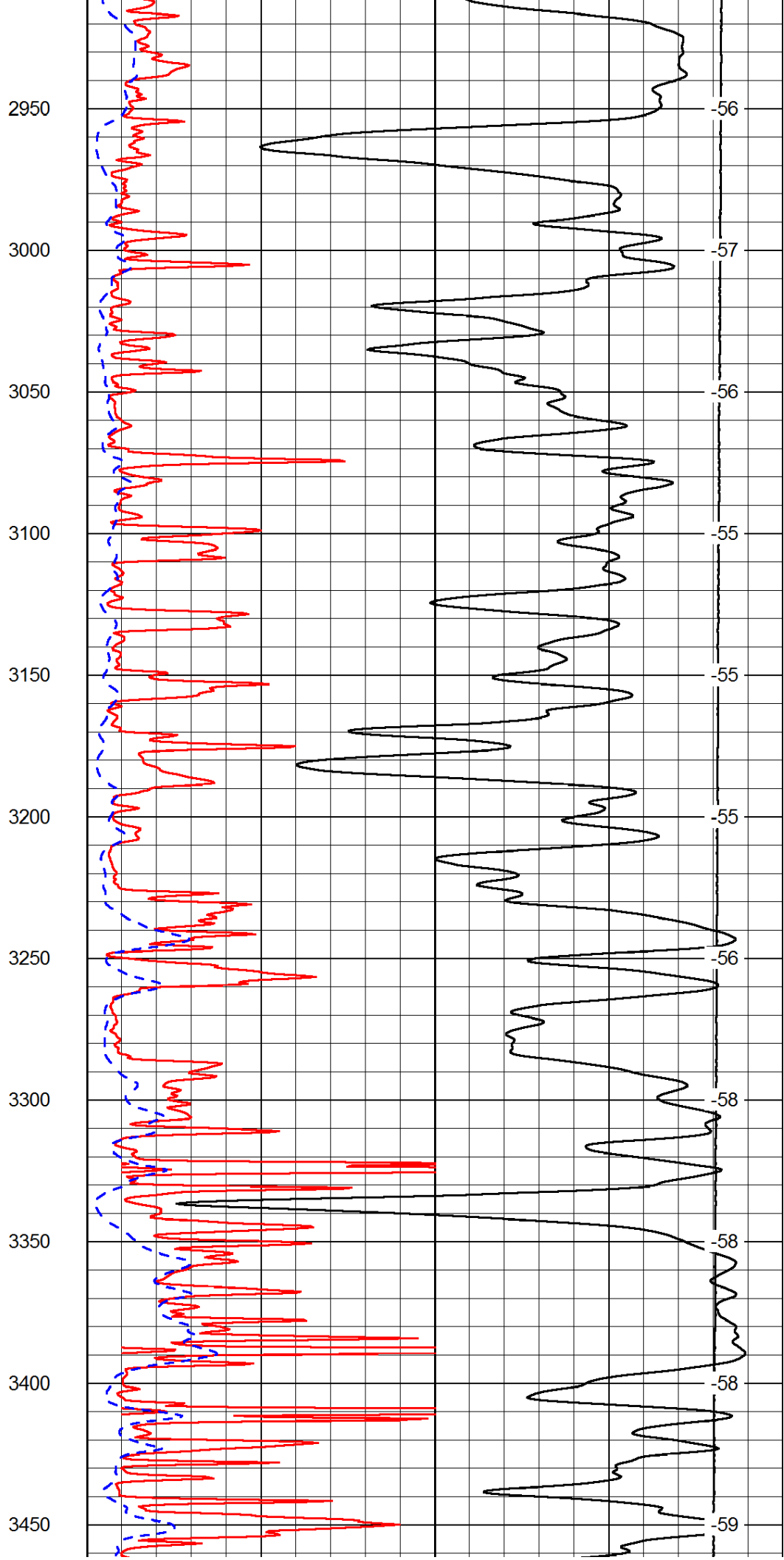
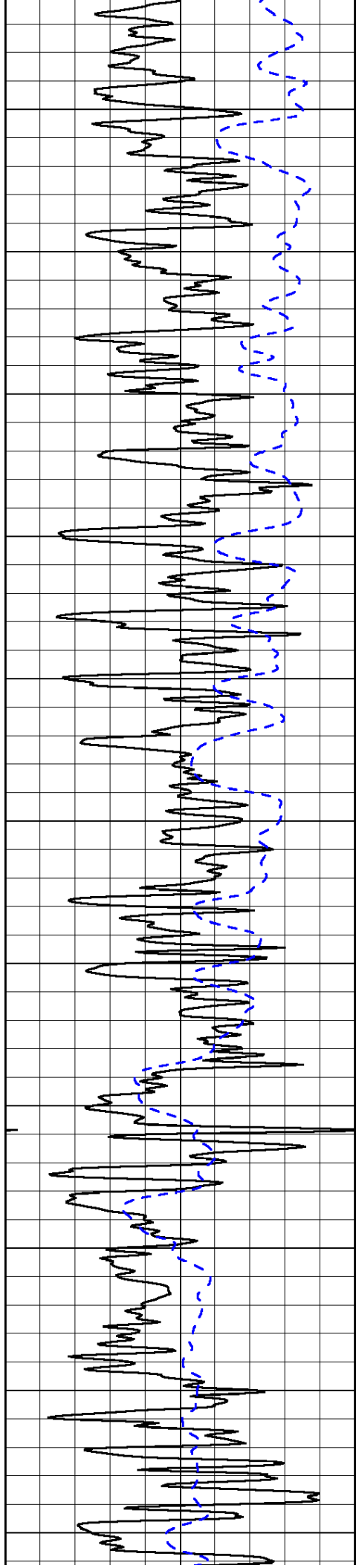


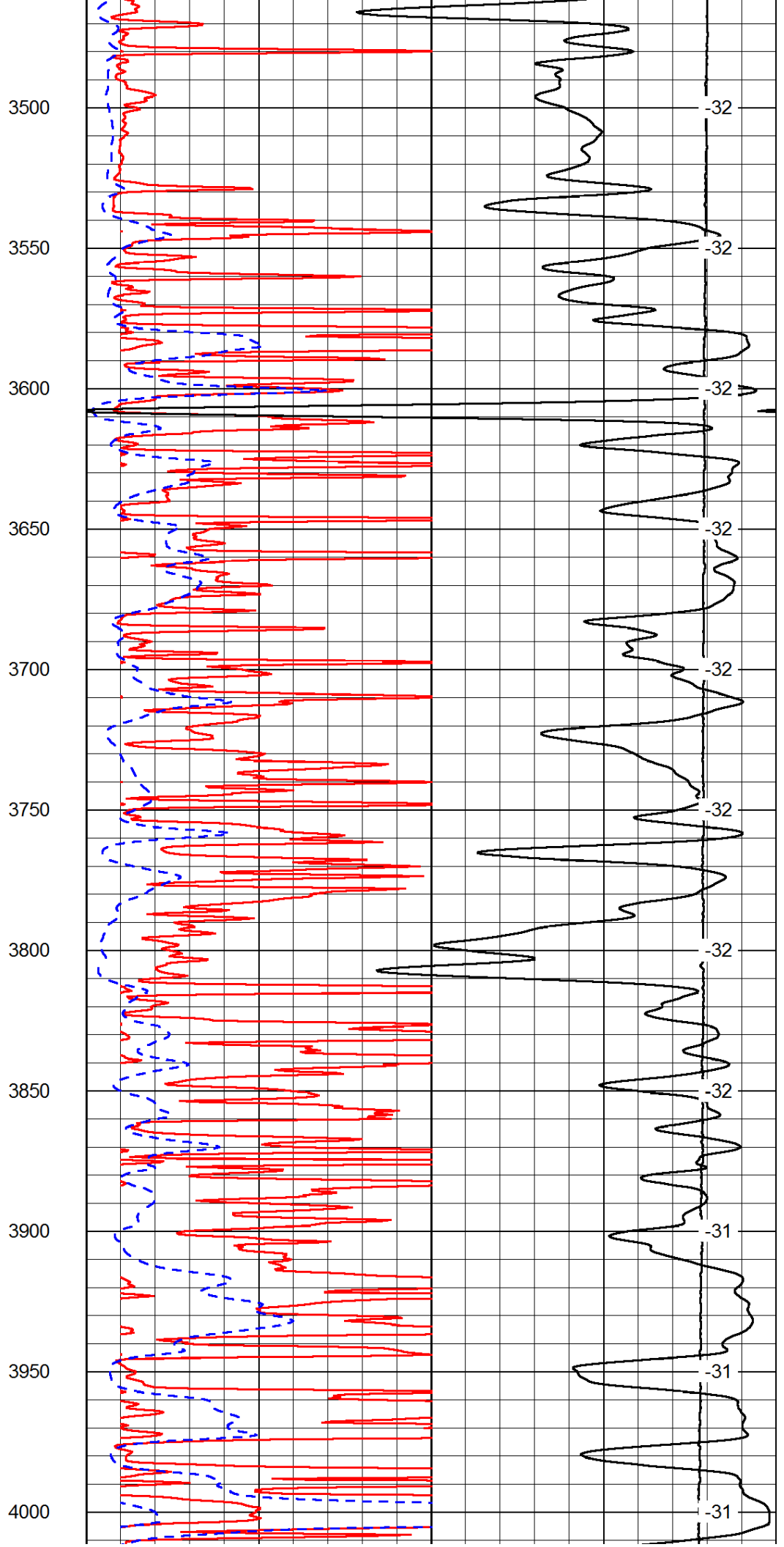
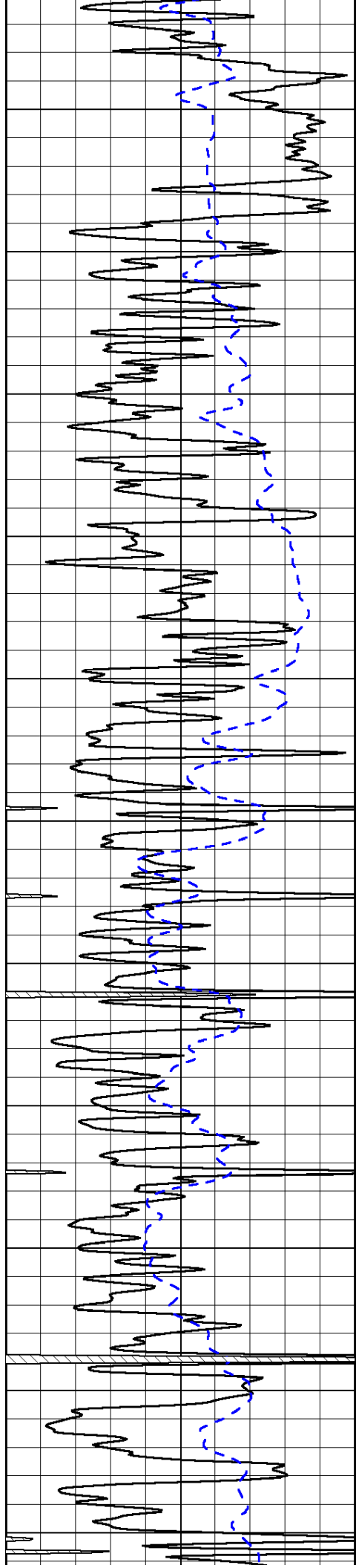


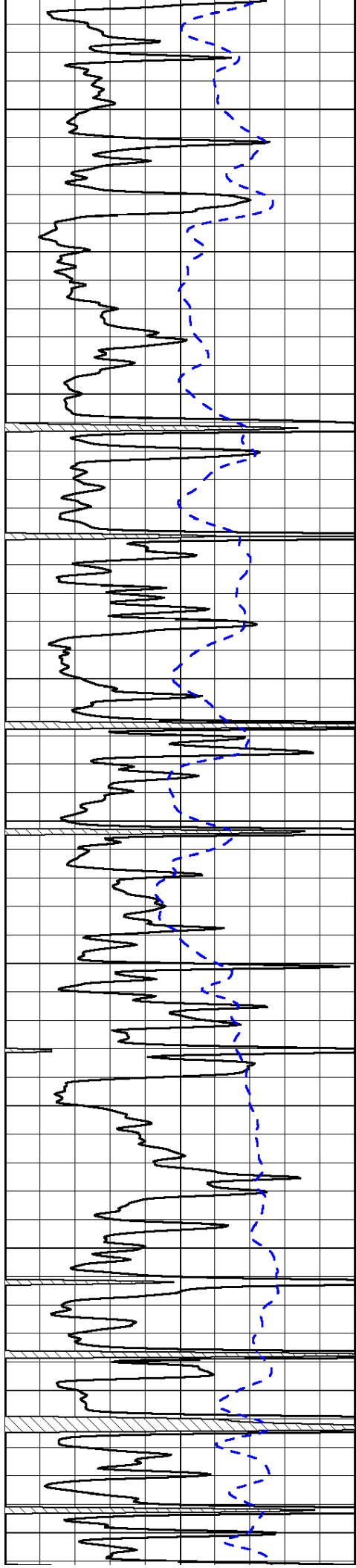




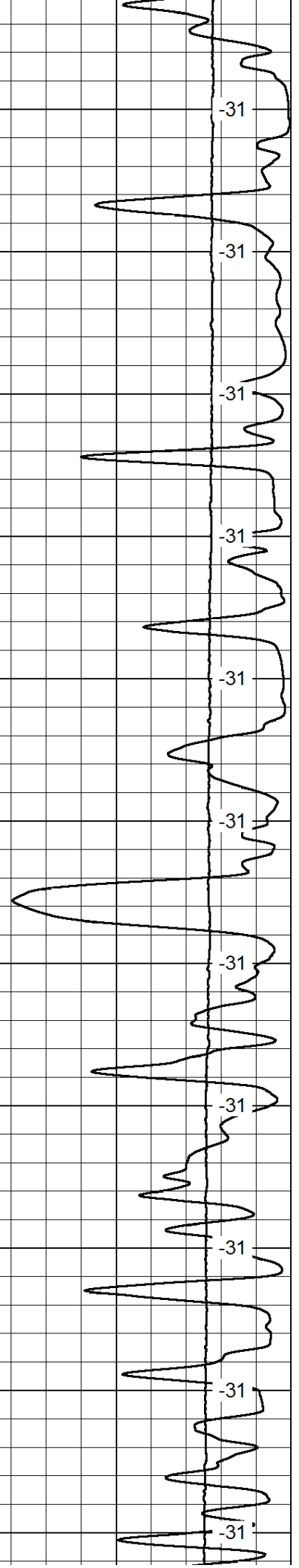
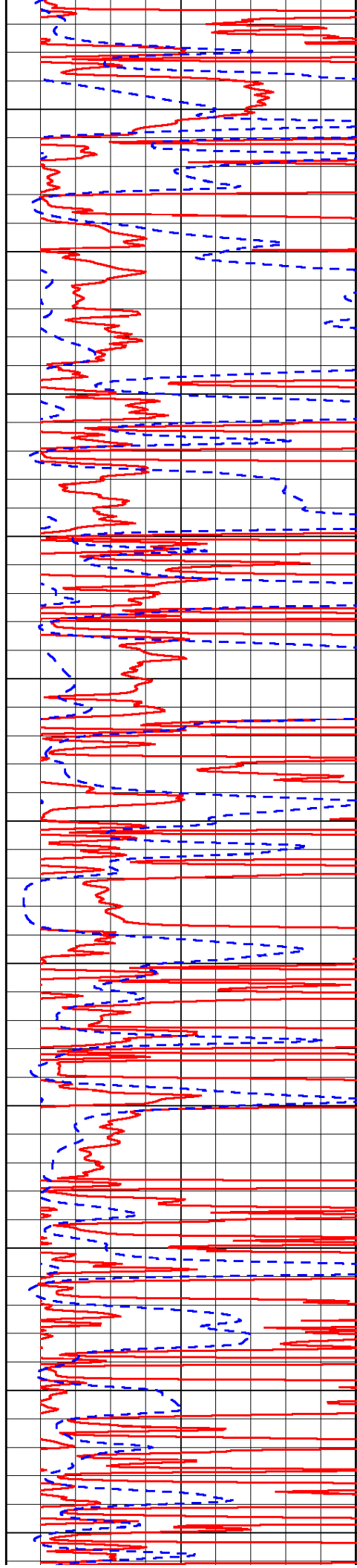




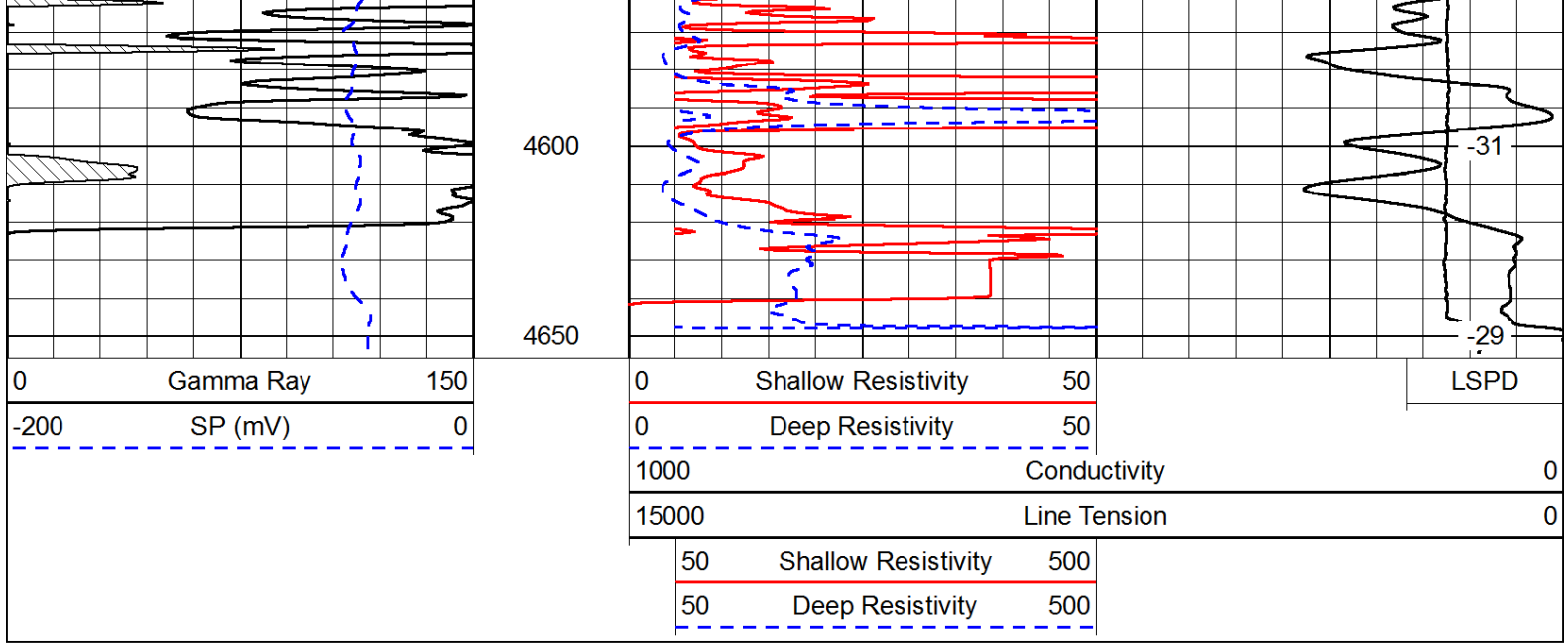




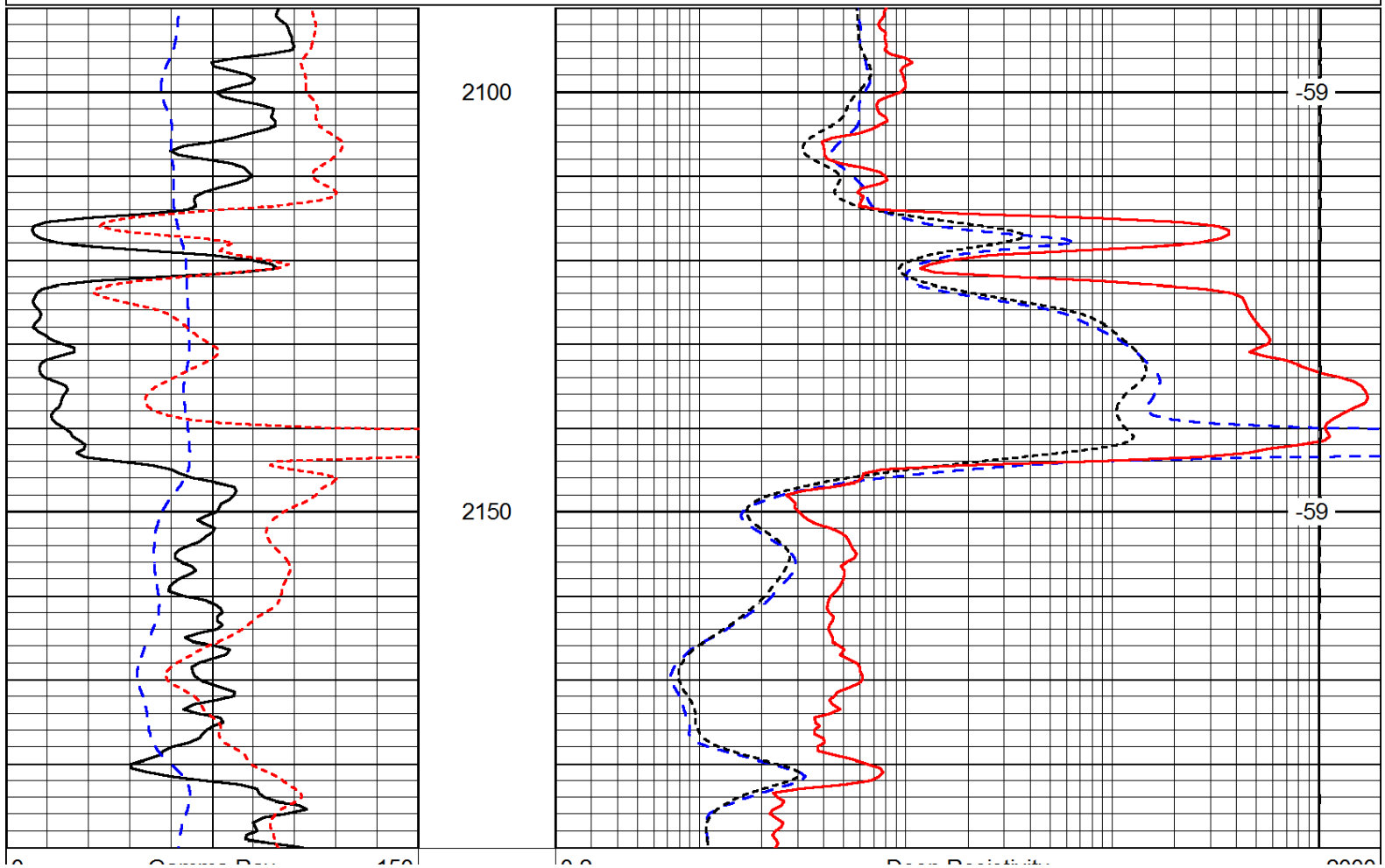
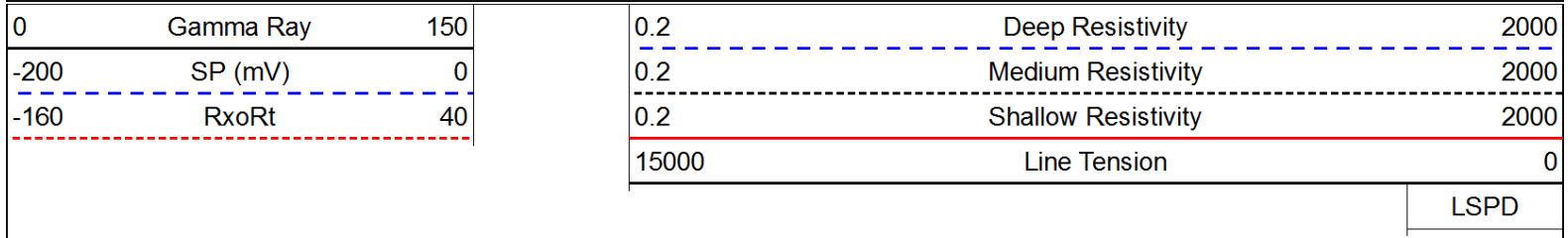
4050
4100
4150
4200
4250
4300
4350
4400
4450
4500
4550



-31
-31
-31
-31
-31
-31
-31
-31
-31
-31
-31



Database File: c:\warrior\data\larsen_hineman ranch #1-31\larsen_hinemanranch_1-31hd.db
 Dataset Pathname: DIL/larsstck
 Presentation Format: dil
 Dataset Creation: Thu May 29 14:13:17 2014
 Charted by: Depth in Feet scaled 1:240



0	Gamma Ray	150
-200	SP (mV)	0
-160	RxoRt	40

0.2	Deep Resistivity	2000
0.2	Medium Resistivity	2000
0.2	Shallow Resistivity	2000
15000	Line Tension	0

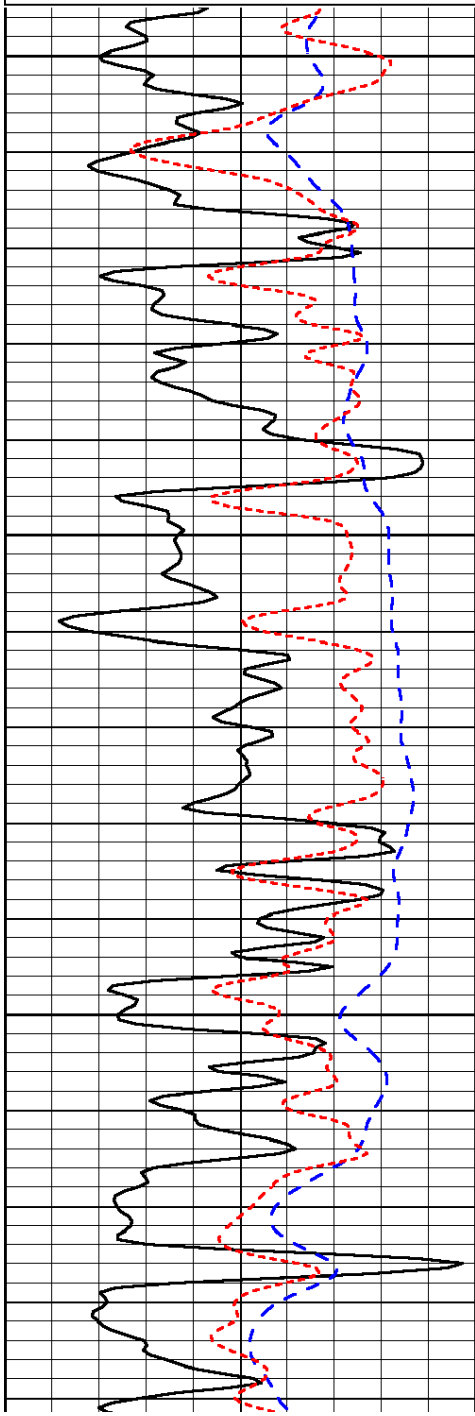
LSPD

Database File: c:\warrior\data\larsen_hineman ranch #1-31\larsen_hinemanranch_1-31hd.db
 Dataset Pathname: DIL/larsstck
 Presentation Format: dil
 Dataset Creation: Thu May 29 14:13:17 2014
 Charted by: Depth in Feet scaled 1:240

0	Gamma Ray	150
-200	SP (mV)	0
-160	RxoRt	40

0.2	Deep Resistivity	2000
0.2	Medium Resistivity	2000
0.2	Shallow Resistivity	2000
15000	Line Tension	0

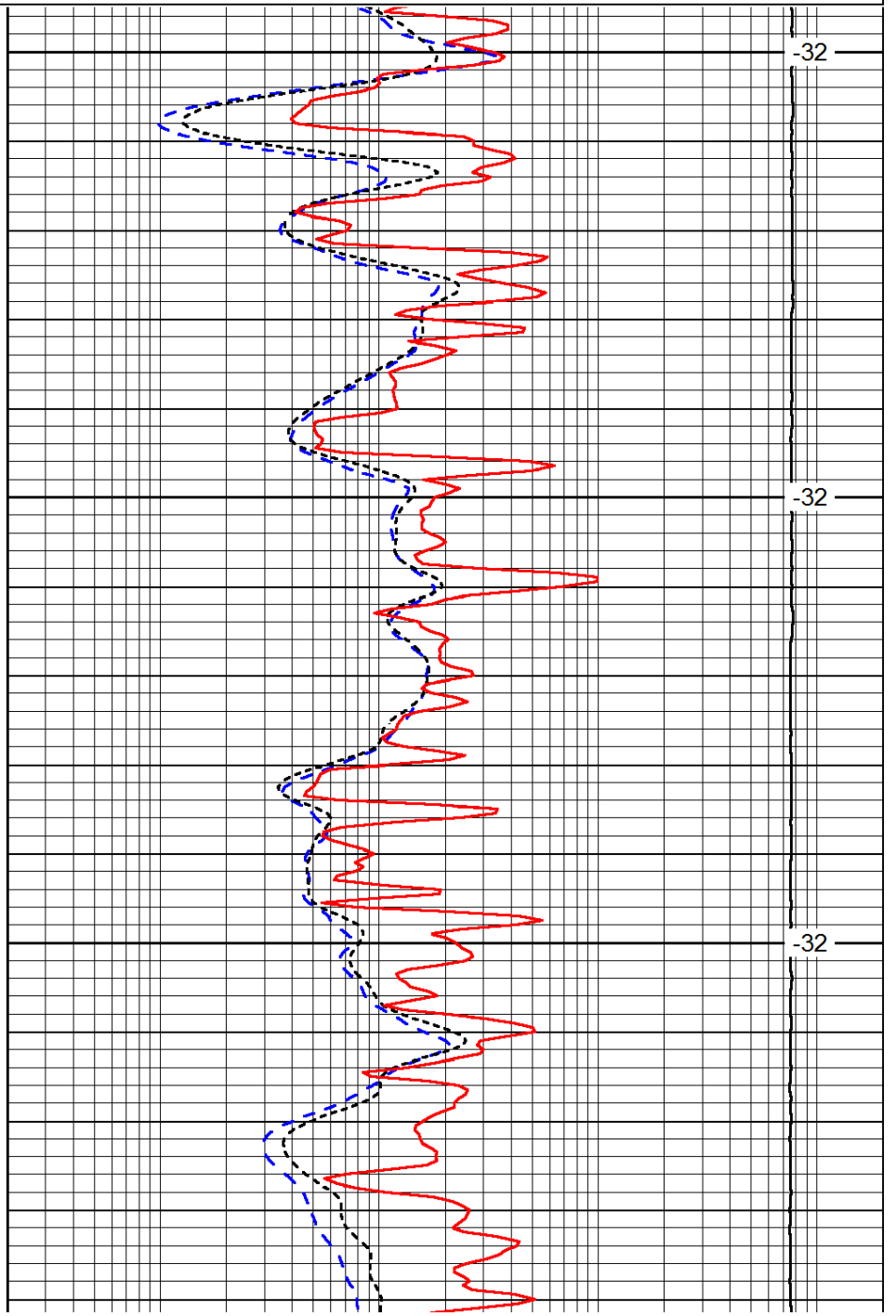
LSPD



3600

3650

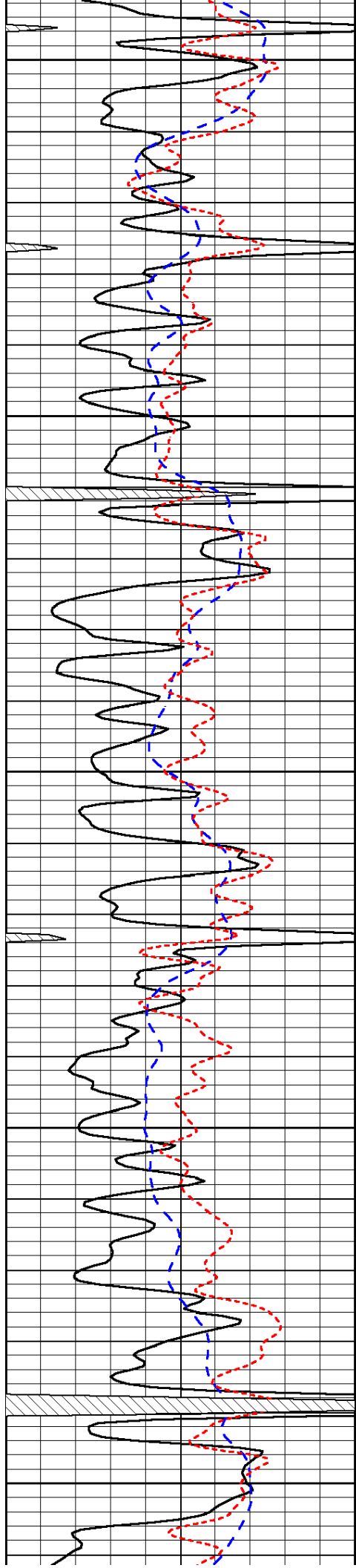
3700



-32

-32

-32



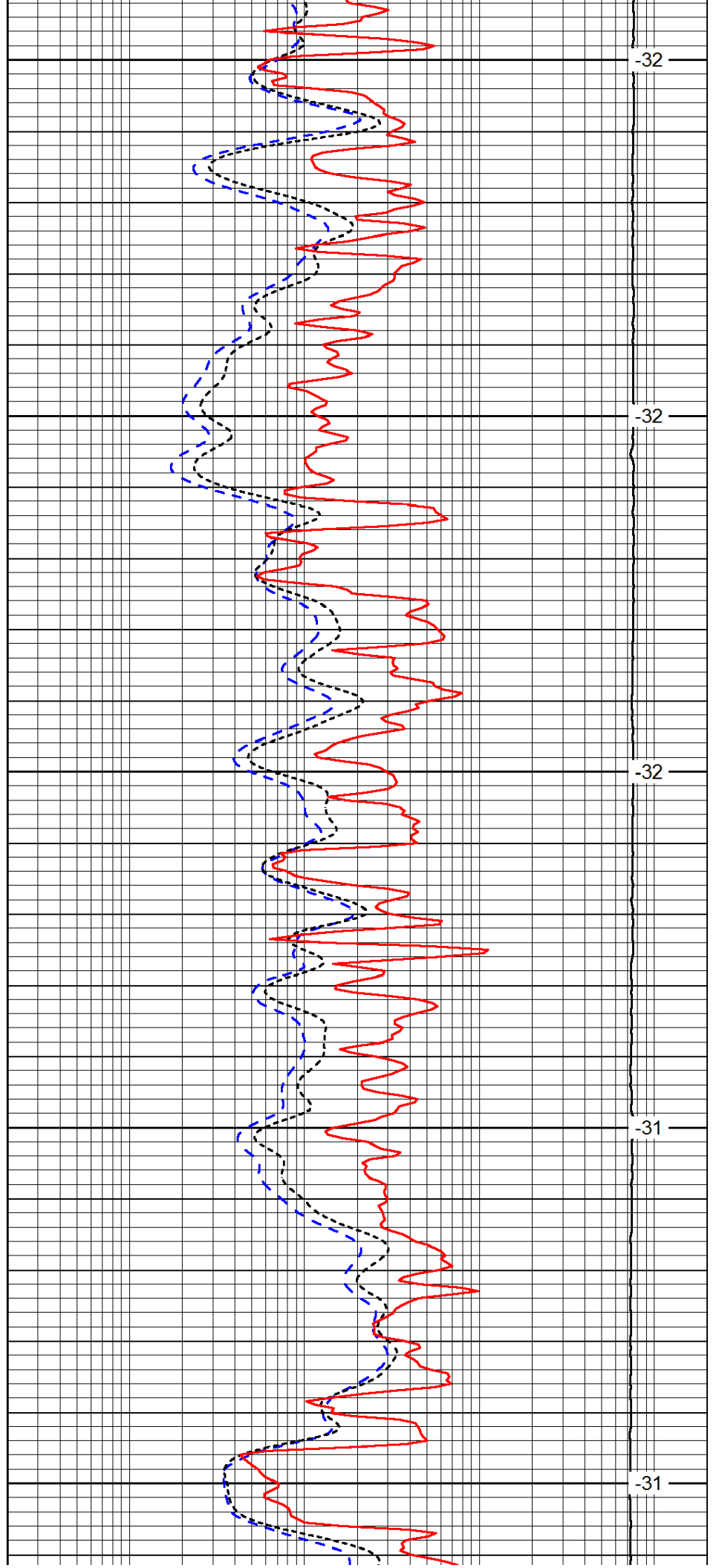
3750

3800

3850

3900

3950



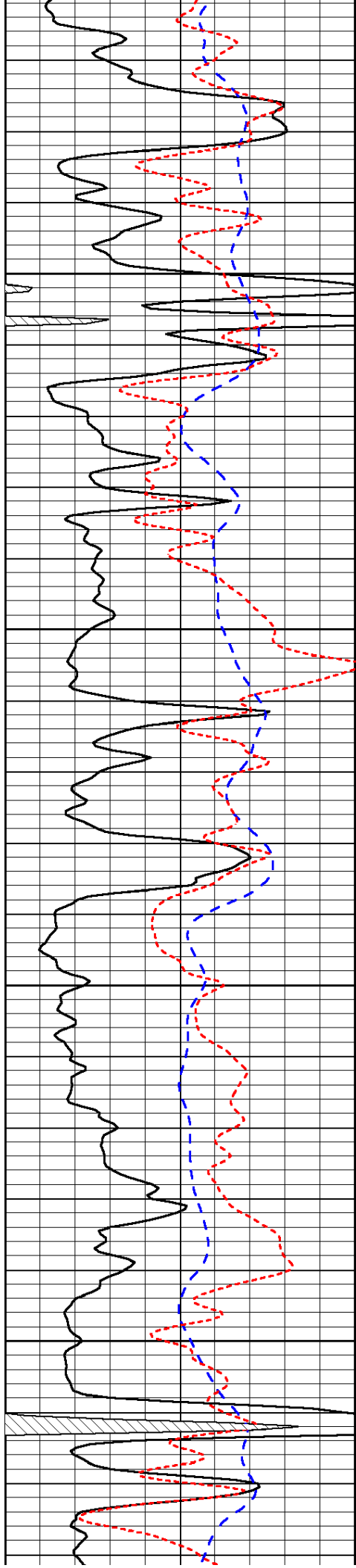
-32

-32

-32

-31

-31

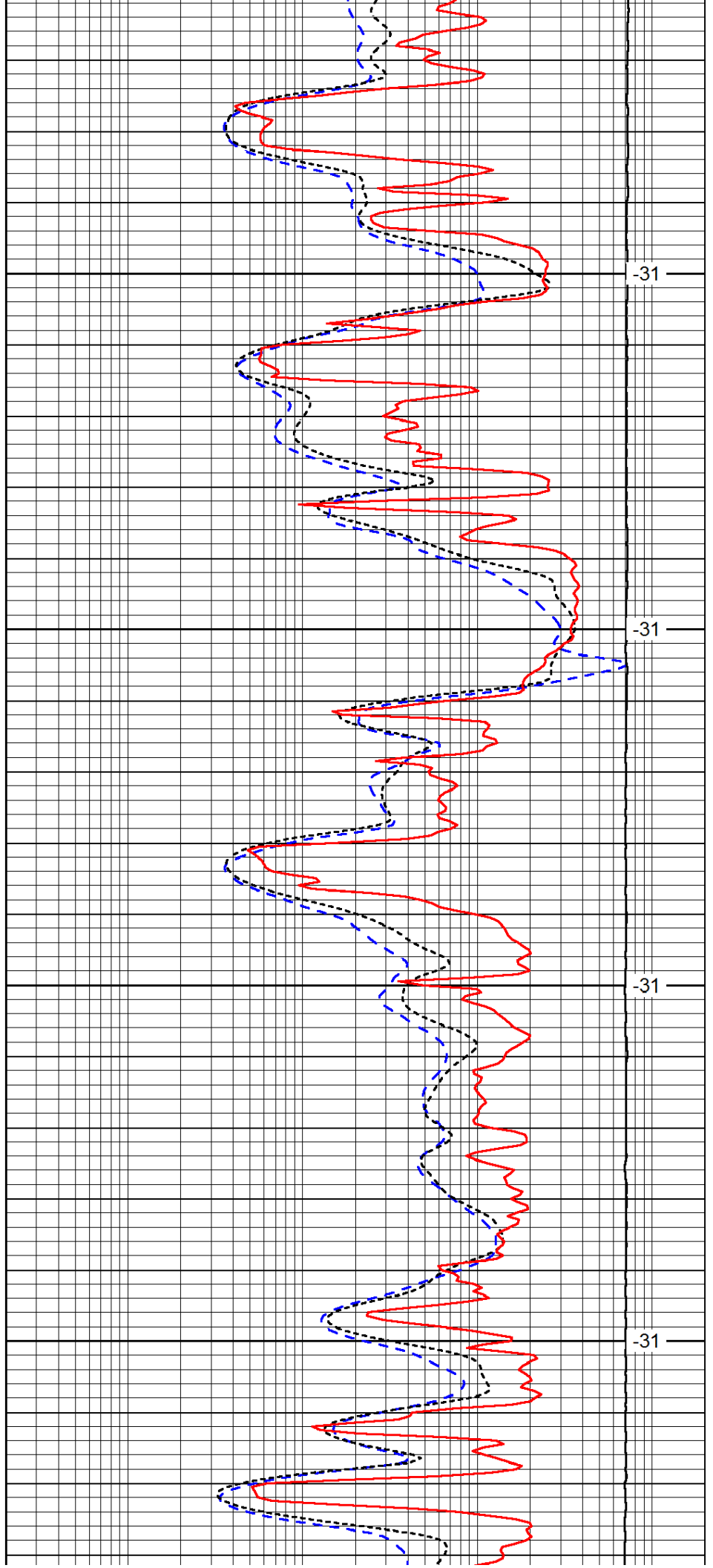


4000

4050

4100

4150

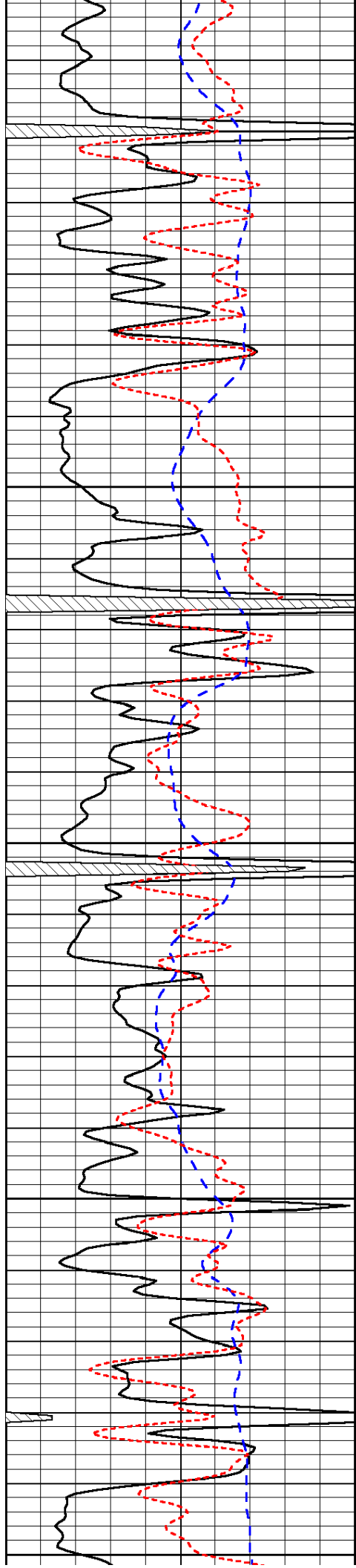


-31

-31

-31

-31



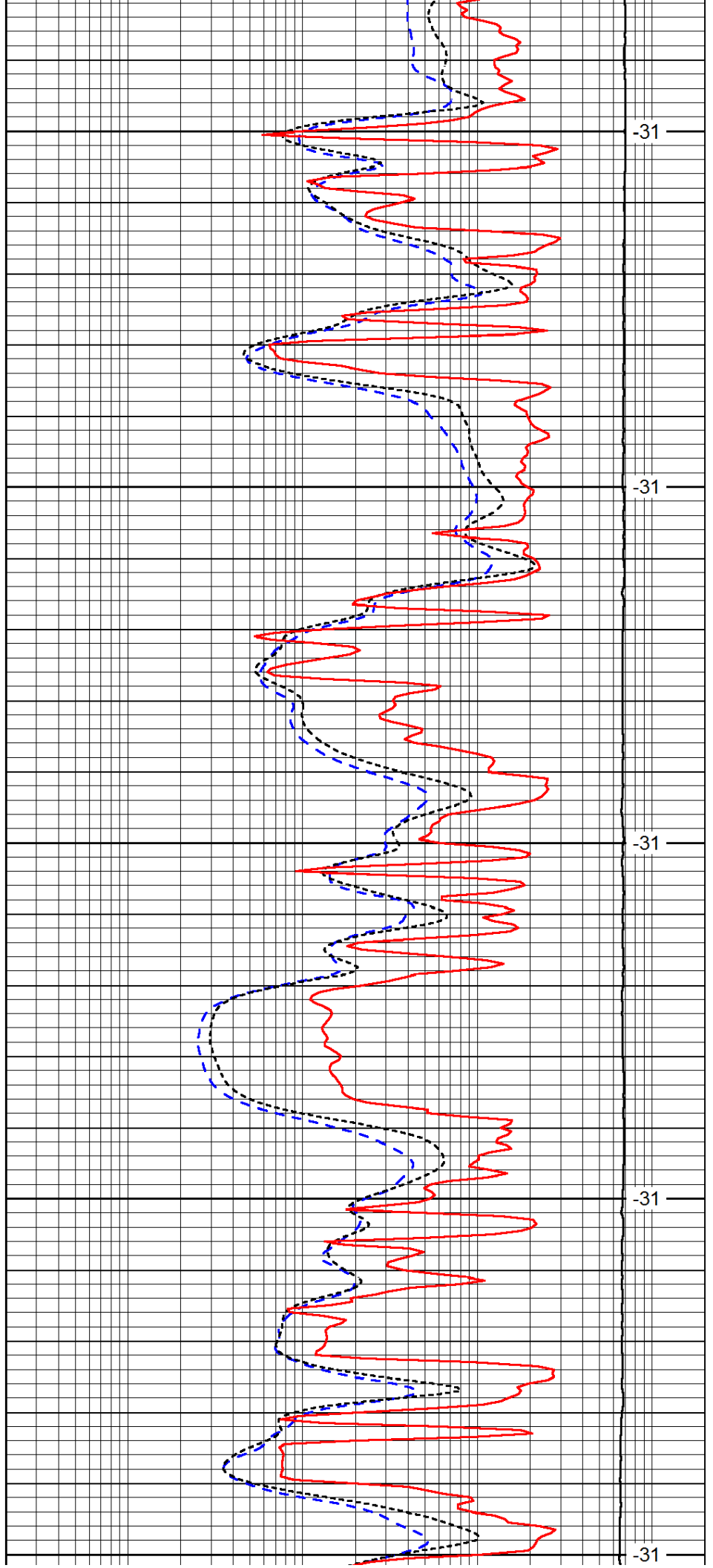
4200

4250

4300

4350

4400



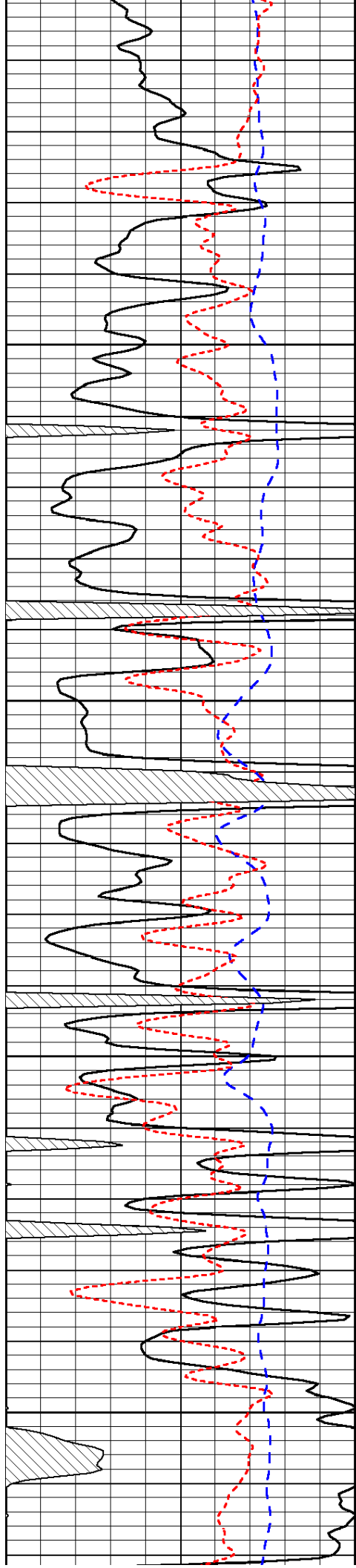
-31

-31

-31

-31

-31

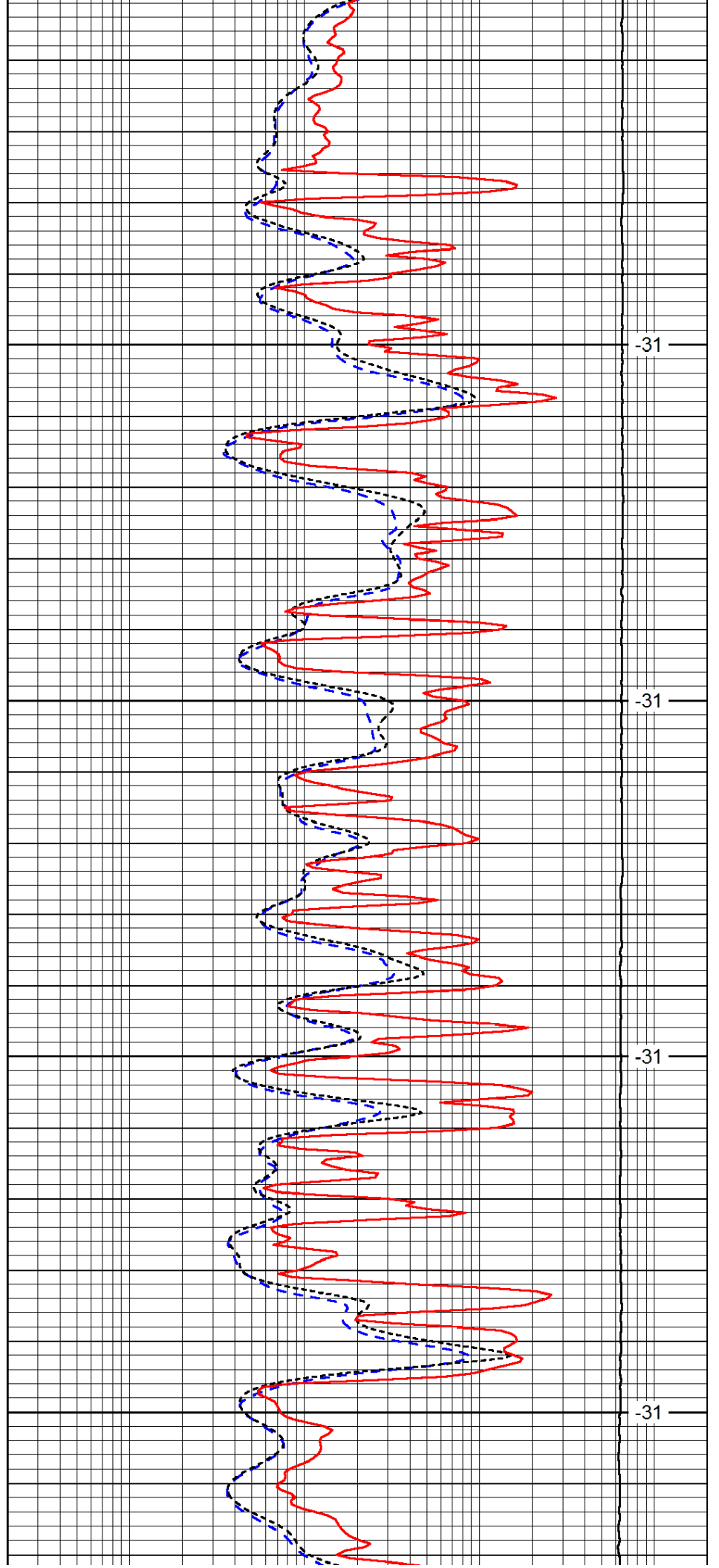


4450

4500

4550

4600

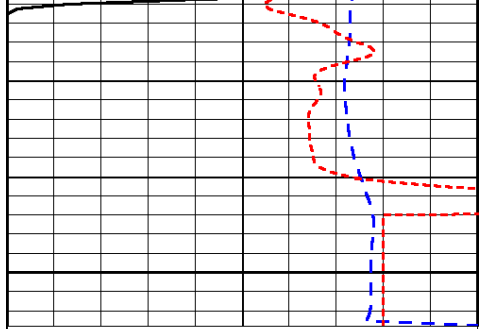


-31

-31

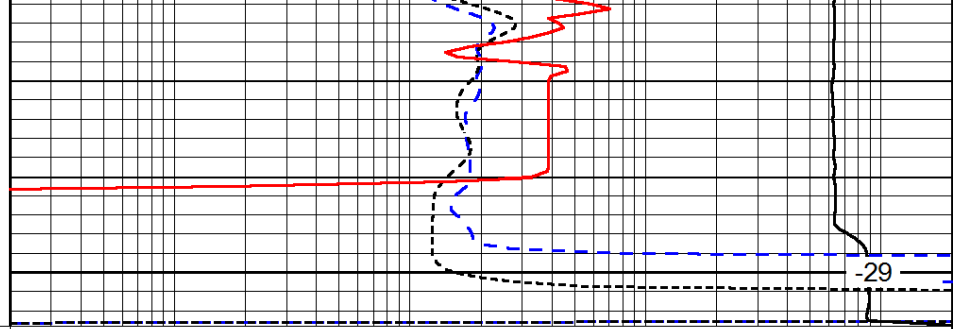
-31

-31



0	Gamma Ray	150
-200	SP (mV)	0
-160	RxoRt	40

4650



0.2	Deep Resistivity	2000
0.2	Medium Resistivity	2000
0.2	Shallow Resistivity	2000
15000	Line Tension	0

LSPD