



Pioneer Energy Services

# Microresistivity Log

15-101-22512-00-00

API No.

Company Larson Engineering, Inc.

Well Hineman Ranch #1-31

Field Wildcat

County Lane State

Kansas

Location 330' FSL & 2,310' FEL

Other Services  
CNL/CDL  
DIL

Sec: 31 Twp: 18S Rge: 28W

Permanent Datum Ground Level Elevation 2739  
Log Measured From Kelly Bushing 7 Ft. Above Perm. Datum  
Drilling Measured From Kelly Bushing

Elevation  
K.B. 2746  
D.F.  
G.L. 2739

Date 5/29/2014

Run Number Two

Depth Driller 4648

Depth Logger 4646

Bottom Logged Interval 4645

Top Log Interval 3600

Casing Driller 8.625 @ 262

Casing Logger 259

Bit Size 7.875

Type Fluid in Hole Chemical

Salinity, ppm CL 2400

Density / Viscosity 9.1 51

pH / Fluid Loss 10.5 7.2

Source of Sample Flowline

Rm @ Meas. Temp .70 @ 82

Rmf @ Meas. Temp .53 @ 82

Rmc @ Meas. Temp .95 @ 82

Source of Rmf / Rmc Charts

Rm @ BHT .47 @ 122

Operating Rig Time 4 Hours

Max Rec. Temp. F 122

Equipment Number 108

Location Hays

Recorded By J. Long

Witnessed By Vern Schrag

<<< Fold Here >>>

All interpretations are opinions based on inferences from electrical or other measurements and we cannot and do not guarantee the accuracy or correctness of any interpretation, and we shall not, except in the case of gross or willful negligence on our part, be liable or responsible for any loss, costs, damages, or expenses incurred or sustained by anyone resulting from any interpretation made by any of our officers, agents or employees. These interpretations are also subject to our general terms and conditions set out in our current Price Schedule.

### Comments

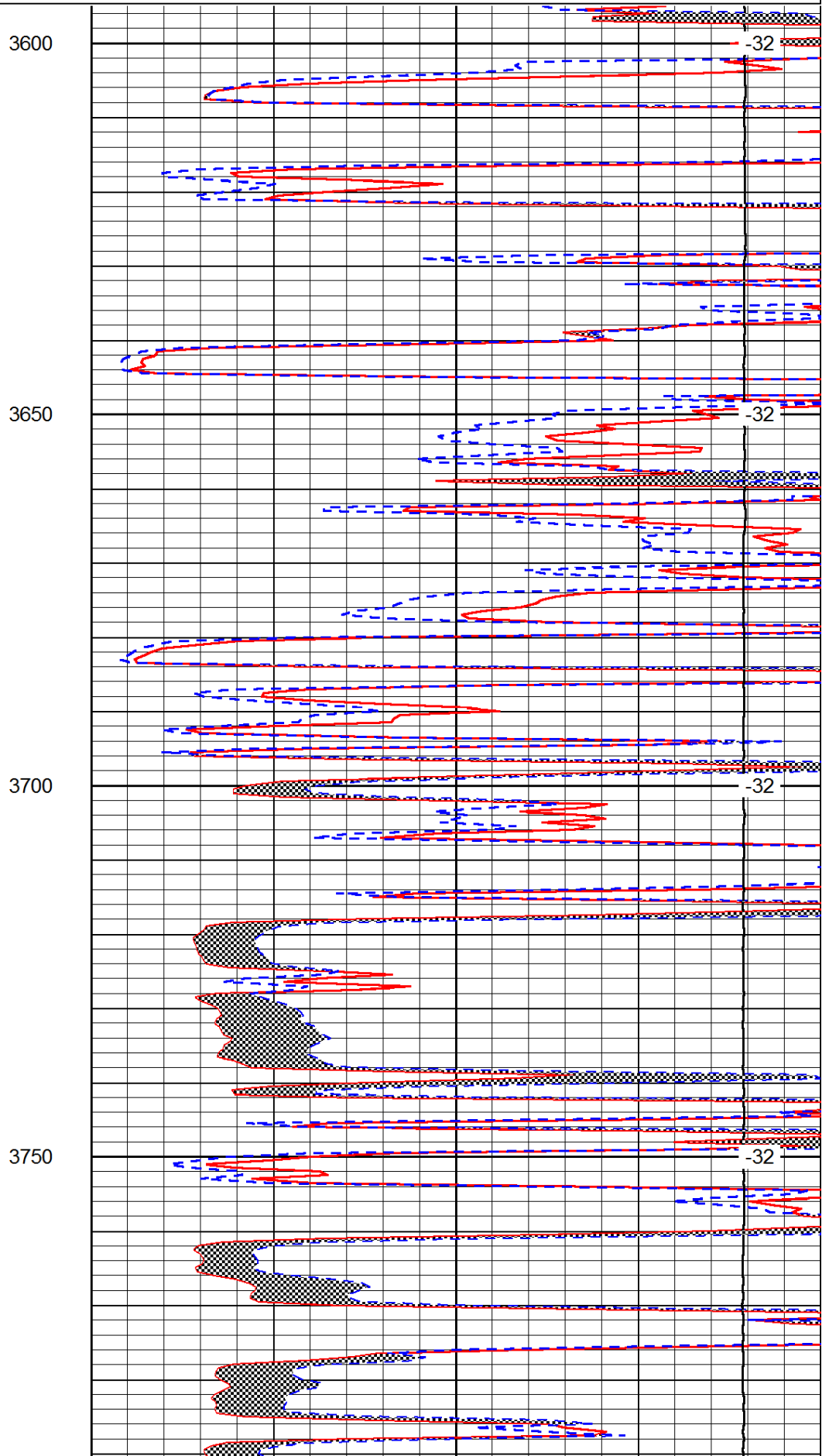
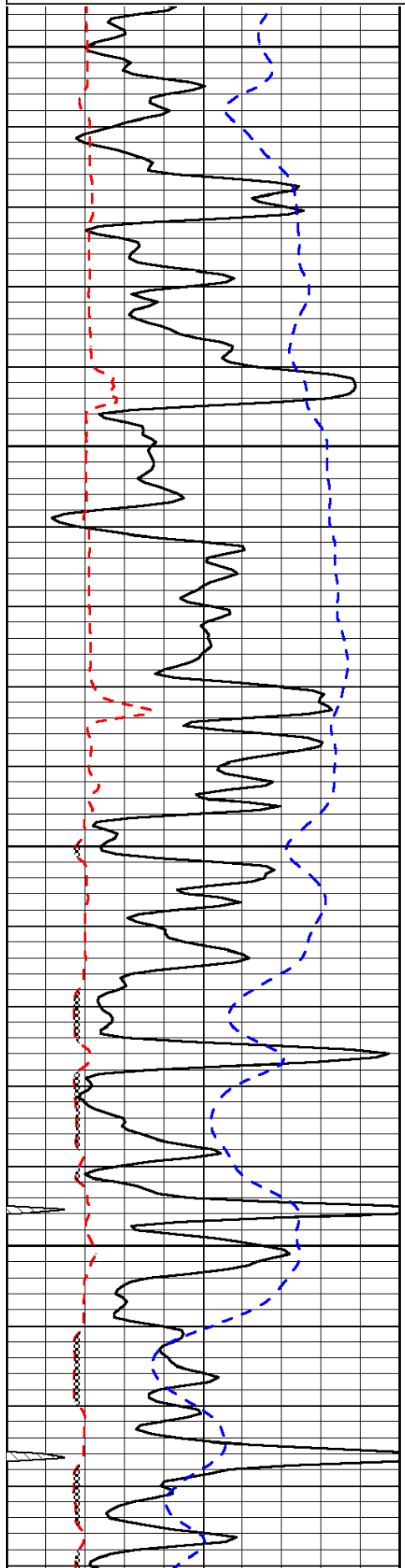
Thank you for using Pioneer Energy Services  
[www.pioneerenergy.com](http://www.pioneerenergy.com)  
 785 625 3858  
 Dighton Ks, 3 South to 120 Rd, 1/2 East, North Into

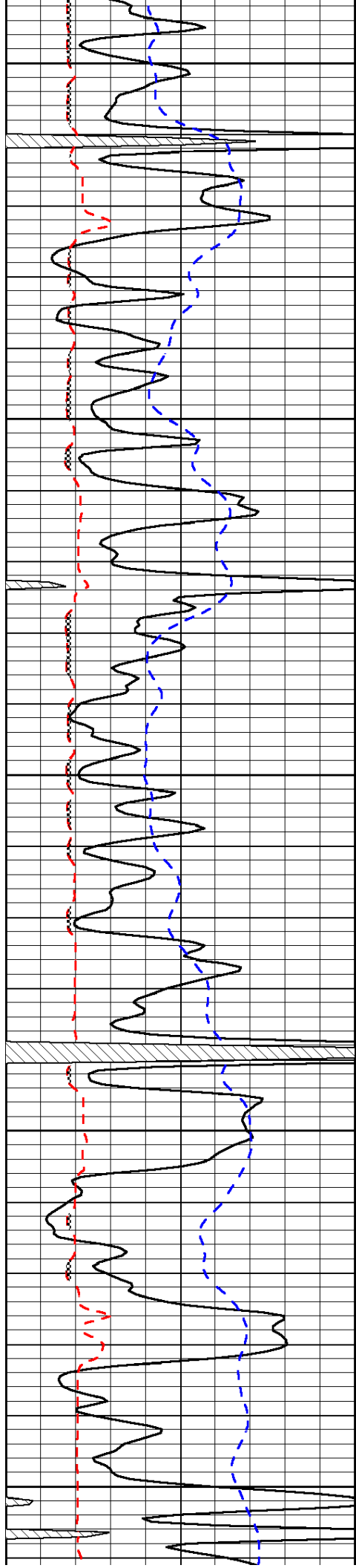
Database File: c:\warrior\data\larsen\_hineman ranch #1-31\larsen\_hinemanranch\_1-31hd.db  
 Dataset Pathname: DIL\larsstck  
 Presentation Format: micro  
 Dataset Creation: Thu May 29 14:13:17 2014  
 Charted by: Depth in Feet scaled 1:240

0	Gamma Ray	150
6	Micro Log Caliper (GAPI)	16
-200	SP (mV)	0

0	Micro Inverse 1 X 1	40
0	Micro Normal 2"	40
15000	Line Weight	0

LSPD





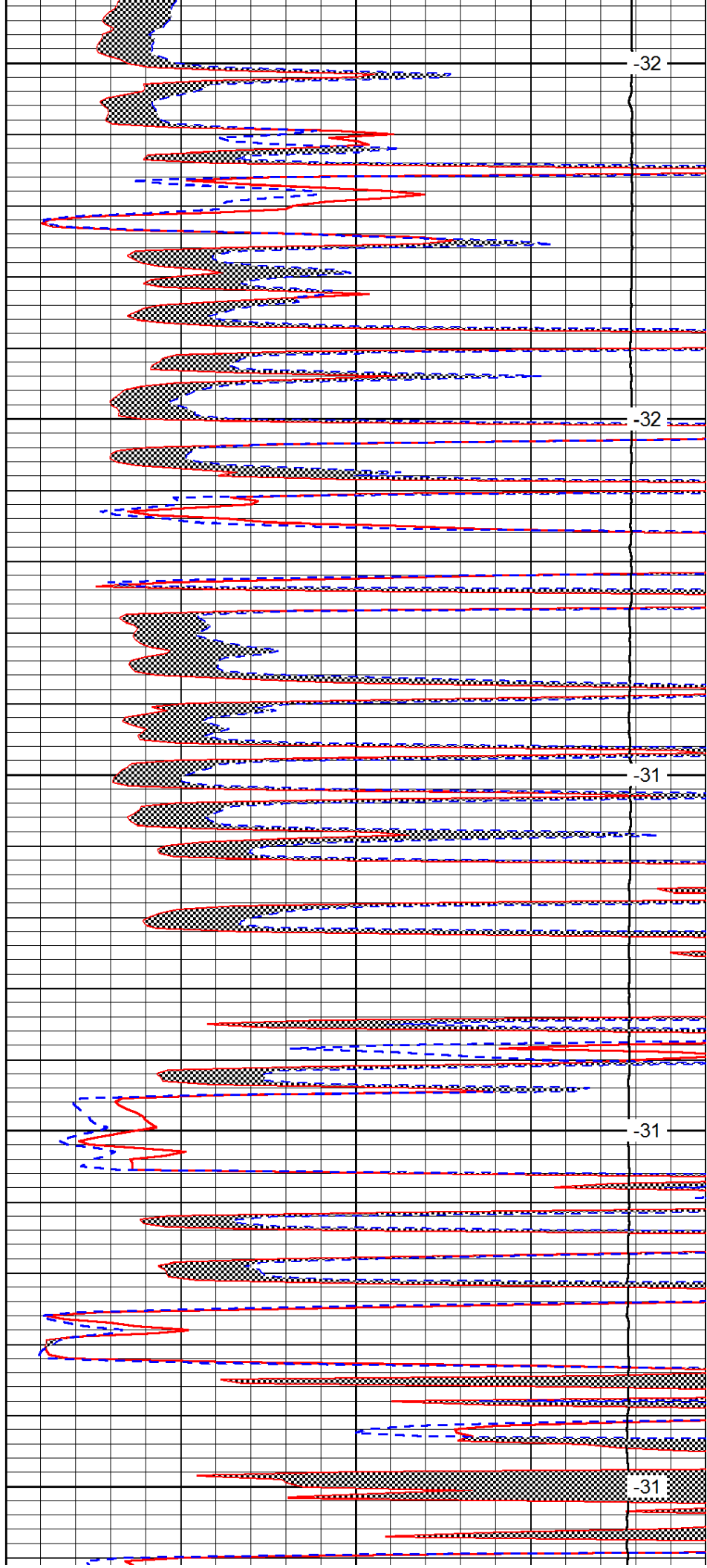
3800

3850

3900

3950

4000



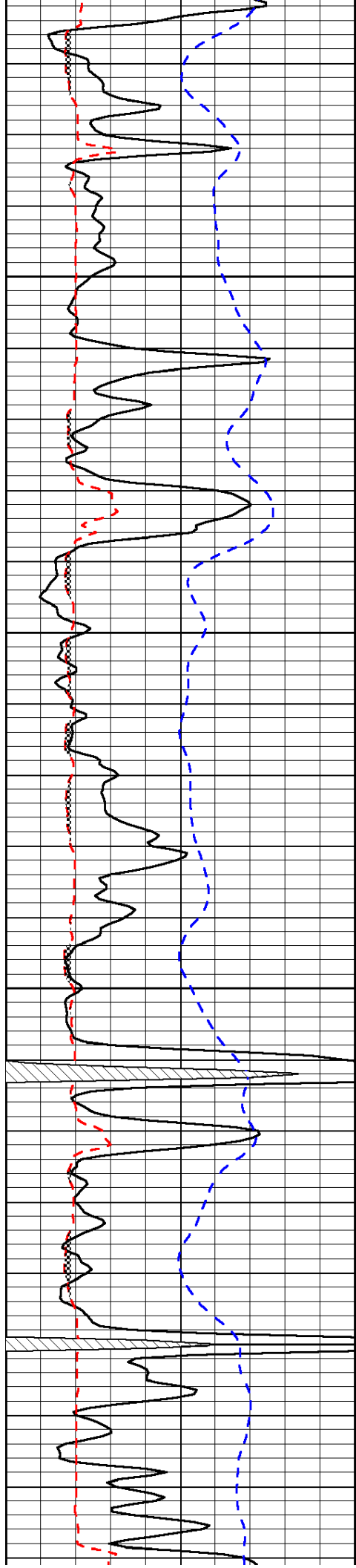
-32

-32

-31

-31

-31

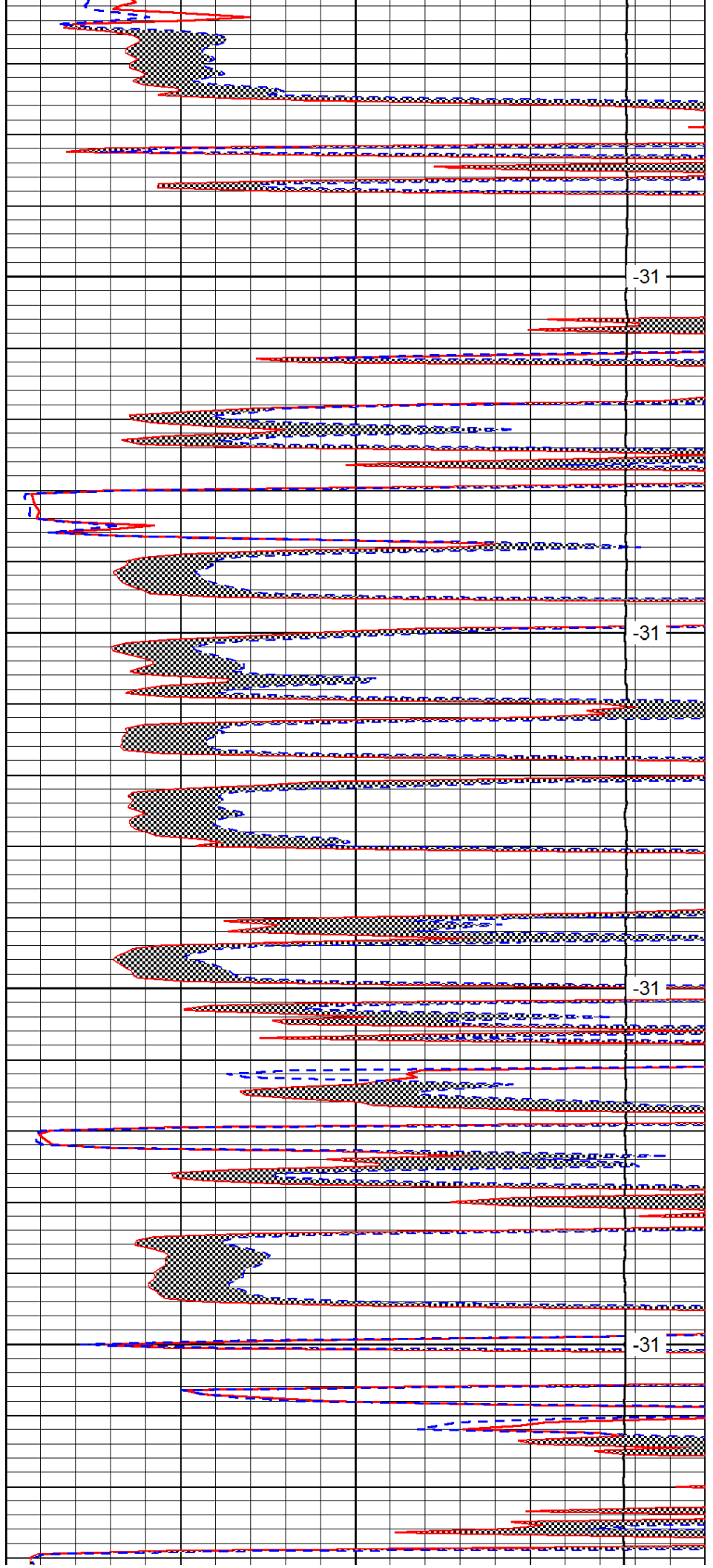


4050

4100

4150

4200

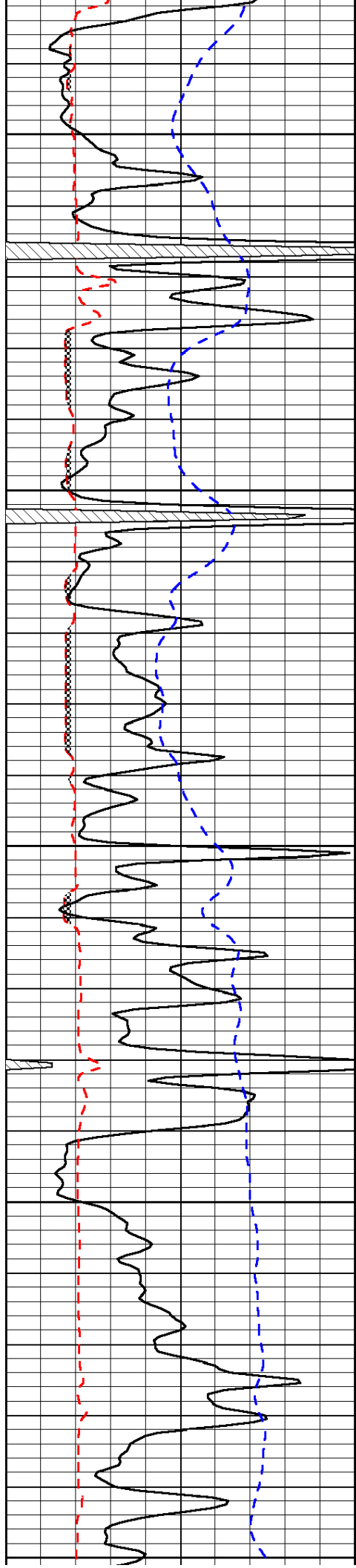


-31

-31

-31

-31



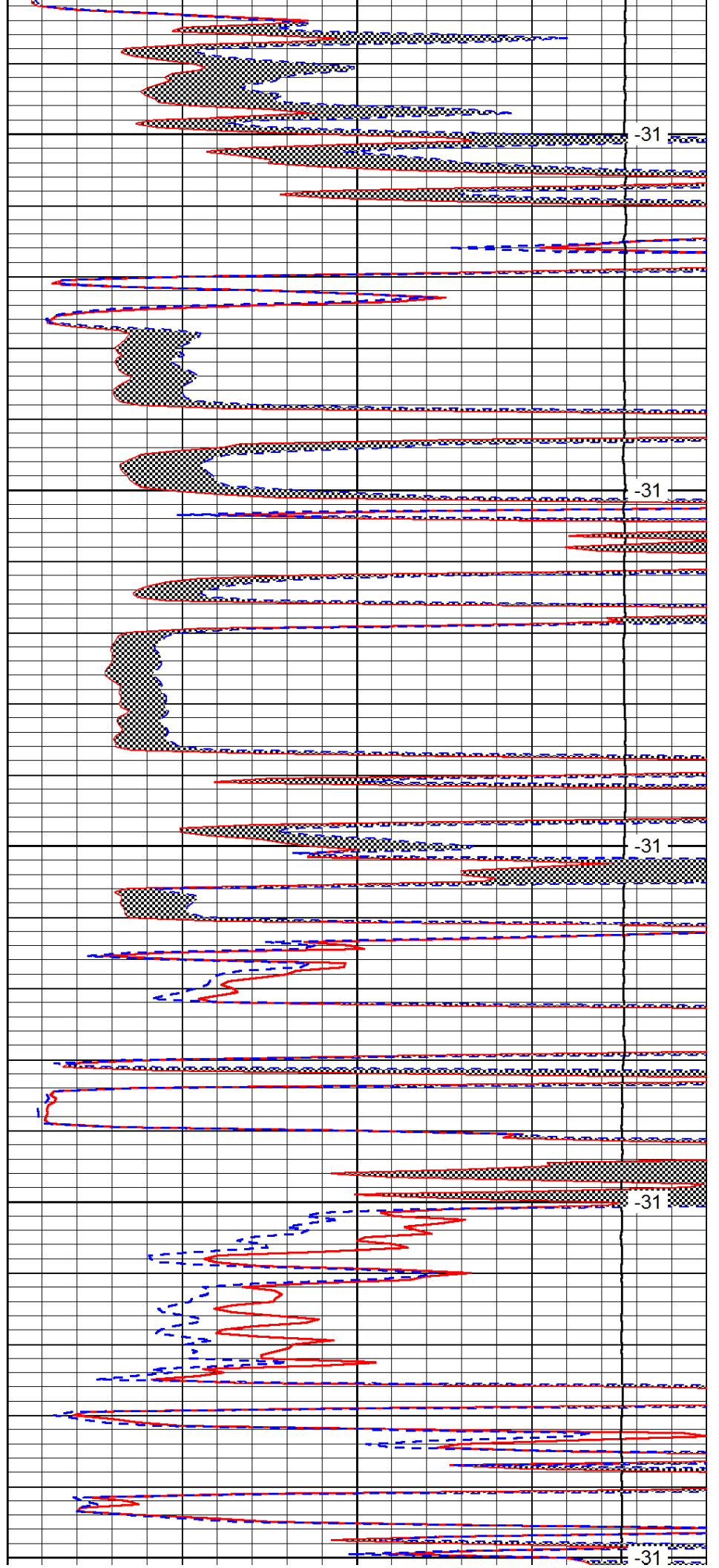
4250

4300

4350

4400

4450



-31

-31

-31

-31

-31

