



DUAL COMP POROSITY LOG

Pioneer Energy Services

Company **CARMEN SCHMITT, INC.**
 Well **BAALMAN #1-23**
 Field **WILDCAT**
 County **THOMAS** State **KANSAS**

Company **CARMEN SCHMITT, INC.**
 Well **BAALMAN #1-23**
 Field **WILDCAT**
 County **THOMAS**
 State **KANSAS**

Location: **API #: 15-193-21077-00-00**
750' FNL & 2220' FEL
SEC 23 TWP 8S RGE 31W
 Permanent Datum **GROUND LEVEL** Elevation **2968'**
 Log Measured From **KELLY BUSHING**
 Drilling Measured From **KELLY BUSHING**
 Other Services **DIL MEL/BHCS**

Date	5/18/2020						
Run Number	ONE						
Type Log	CNL/CDL						
Depth Driller	4700'						
Depth Logger	4702'						
Bottom Logged Interval	4672'						
Top Logged Interval	3500'						
Type Fluid In Hole	CHEMICAL						
Salinity, PPM CL	4,000						
Density	9.4						
Level	FULL						
Max. Rec. Temp. F	123 DEG/F						
Operating Rig Time	4 HOURS						
Equipment -- Location	P-108 HAYS						
Recorded By	J. HENRICKSON						
Witnessed By	BRAD RINE						
Borehole Record							
Run No.	Bit	From	To	Size	Wgt.	From	To
ONE	12.25"	0	263'	8.625"	23#	0	253'
TWO	7.875"	253'	TD				
Casing Record							

<<< Fold Here >>>

All interpretations are opinions based on inferences from electrical or other measurements and Pioneer Wireline Services, LLC cannot and does not guarantee the accuracy or correctness of any interpretation, and Pioneer Wireline Services, LLC will not be liable or responsible for any loss, costs, damages, or expenses incurred or sustained by anyone resulting from any interpretation made by any of our officers, agents or employees.

Comments

N/A DENOTES NOT AVAILABLE OR NON-APPLICABLE.

HOXIE KANSAS
 WEST TO 36 ROAD, 2 SOUTH TO P ROAD,
 3/8 WEST, SOUTH INTO

Log Measured From: KELLY BUSHING 10 Ft. Above Permanent Datum

THANK YOU FOR USING PIONEER ENERGY SERVICES
www.pioneerenergy.com 785-625-3858

Your Pioneer Energy Services Crew		This Log Record Was Witnessed By	
Engineer: J. HENRICKSON	Operator:	Primary Witness: BRAD RINE	Secondary Witness:
Operator:	Operator:	Secondary Witness:	Secondary Witness:
Operator:		Secondary Witness:	

Log Variables

DatabaseC:\ProgramData\Warrior\Data\carmen_schmitt_baalman_1_23.db
 Dataset field/well/stackml/pass3.1/_vars_

Top - Bottom

A	BOREID in	BOTTEMP degF	CASEOD in	CASETHCK in	FLUIDDEN g/cc	M	MATRXDEN g/cc
1	7.875	123	5.5	0	1	2	2.71
NPORSEL	PERFS	SNDERR mmho/m	SNDERRM mmho/m	SPSHIFT mV	SRFTEMP degF	SZCOR	TDEPTH ft
Limestone	0	0	0	150	74	Off	4702

Sensor	Offset (ft)	Schematic	Description	Length (ft)	O.D. (in)	Weight (lb)	
GR	40.58		GR-M&W (89-M&W)	3.00	3.50	50.00	
CNLSC	37.48		CNT-M&W (tk10-MW)	5.50	3.50	100.00	
CNSSC	36.73						
LSD	28.43		CDL-M&W (915-956)	8.50	4.00	250.00	
DCAL	28.42						
SSD	27.93						
			ML-PSI STKBL ML (PSI-01) Stackable Microlog Tools	7.58	4.00	65.00	
MCAL	19.83						
MI	19.83						
MN	19.83						
RLL3	15.80						
RLL3F	15.79						
			DIL-M&W (55-222)	18.50	3.50	220.00	
CILD	8.00						

CILM 4.70

SP 0.20

Dataset: carmen_schmitt_baalman_1_23.db: field/well/stackml/pass3.1
 Total length: 43.08 ft
 Total weight: 685.00 lb
 O.D.: 4.00 in

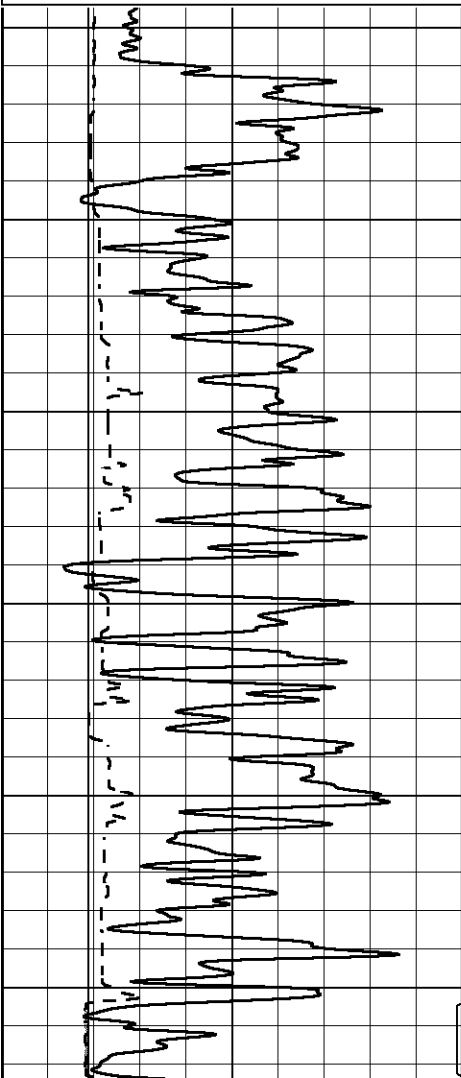


MAIN PASS

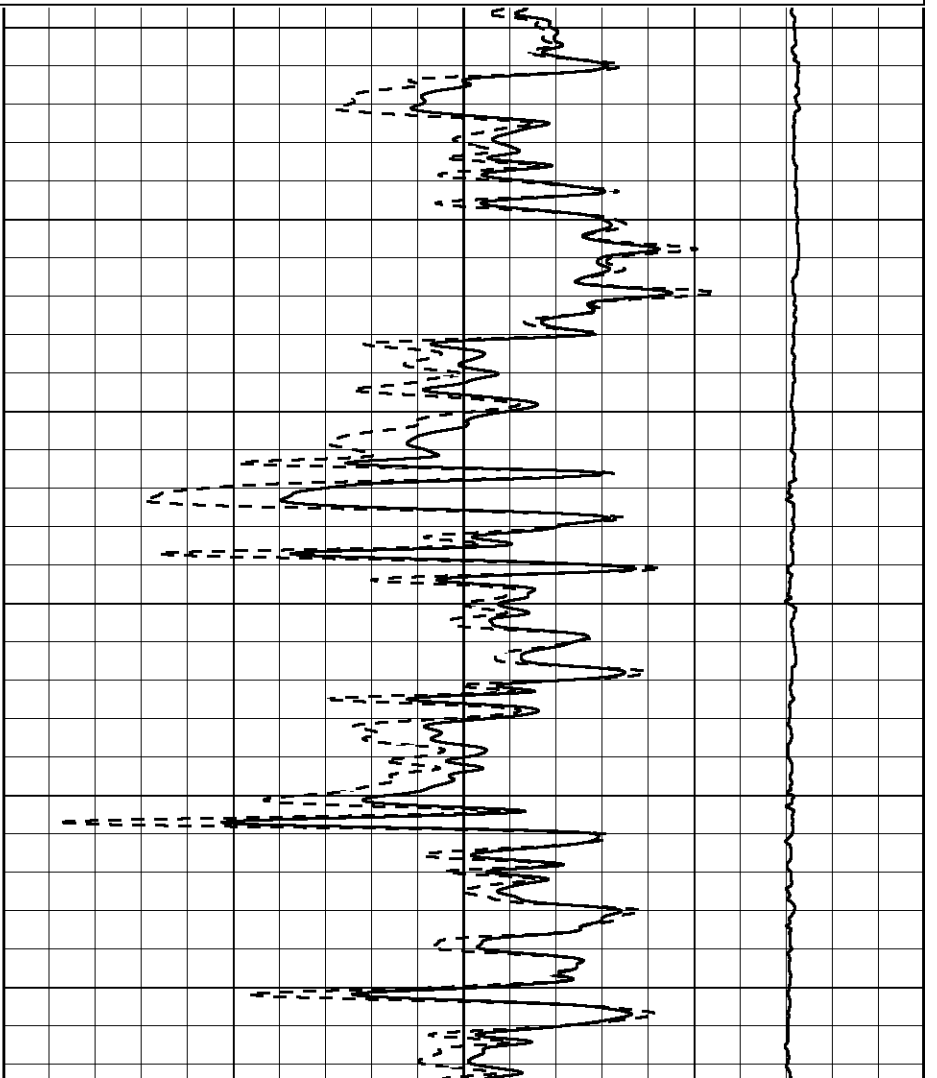
Database File carmen_schmitt_baalman_1_23.db
 Dataset Pathname stackml/pass3.1
 Presentation Format cdl
 Dataset Creation Mon May 18 21:58:57 2020
 Charted by Depth in Feet scaled 1:600

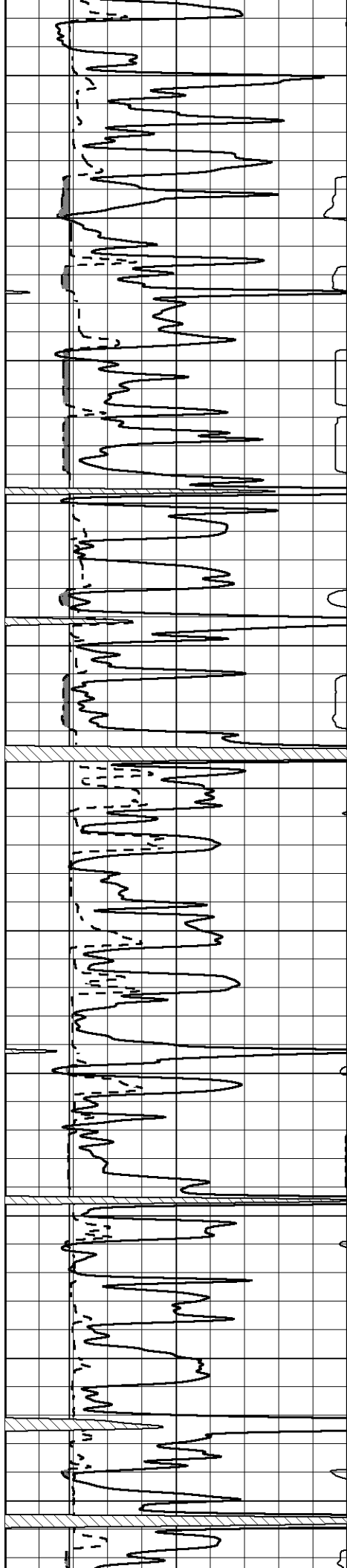
0	GAMMA RAY (GAPI)	150
6	CALIPER (in)	16

30	COMPENSATED DENSITY (pu)	-10
2	BULK DENSITY (g/cc)	3
15000	LINE TENSION (lb)	0



3500
3550
3600
3650
3700
3750





3800

3850

3900

3950

4000

4050

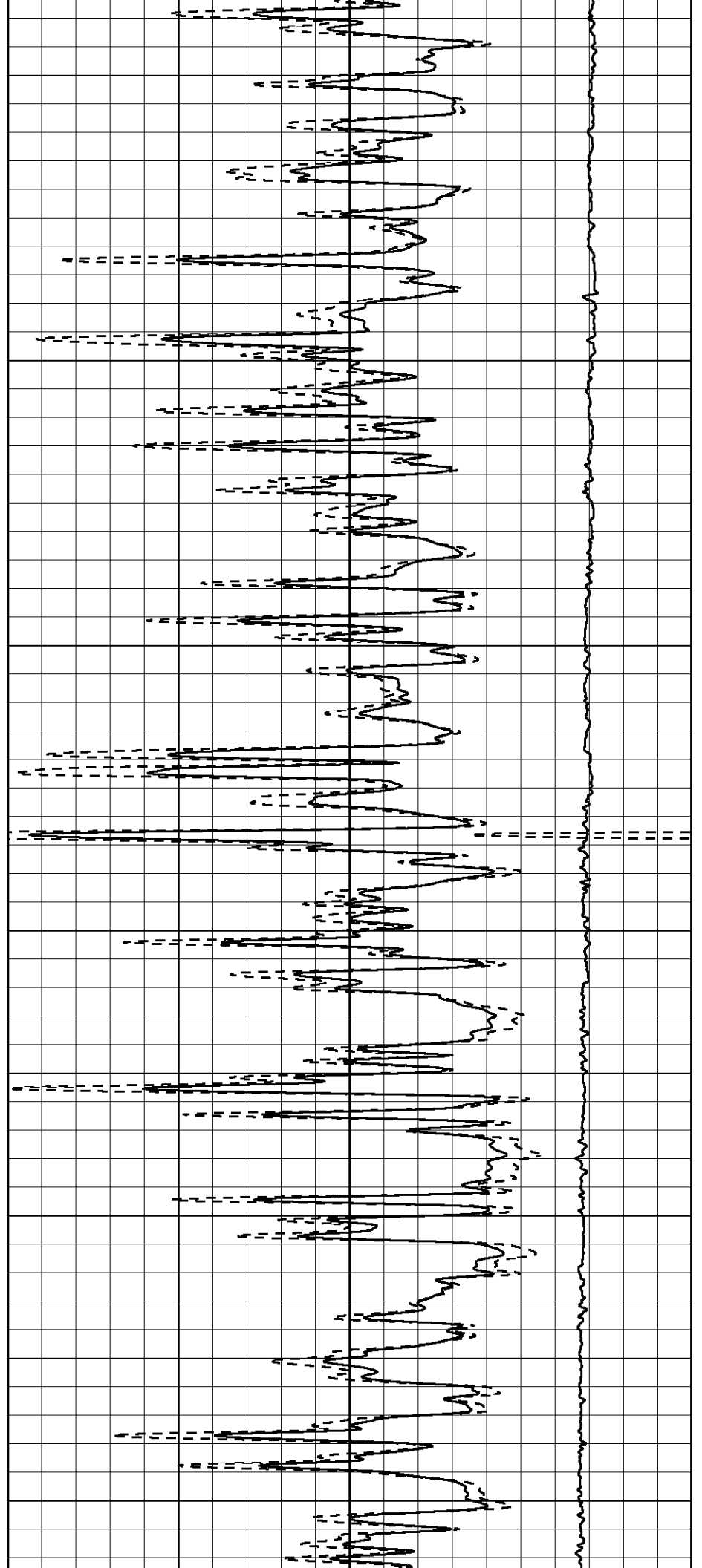
4100

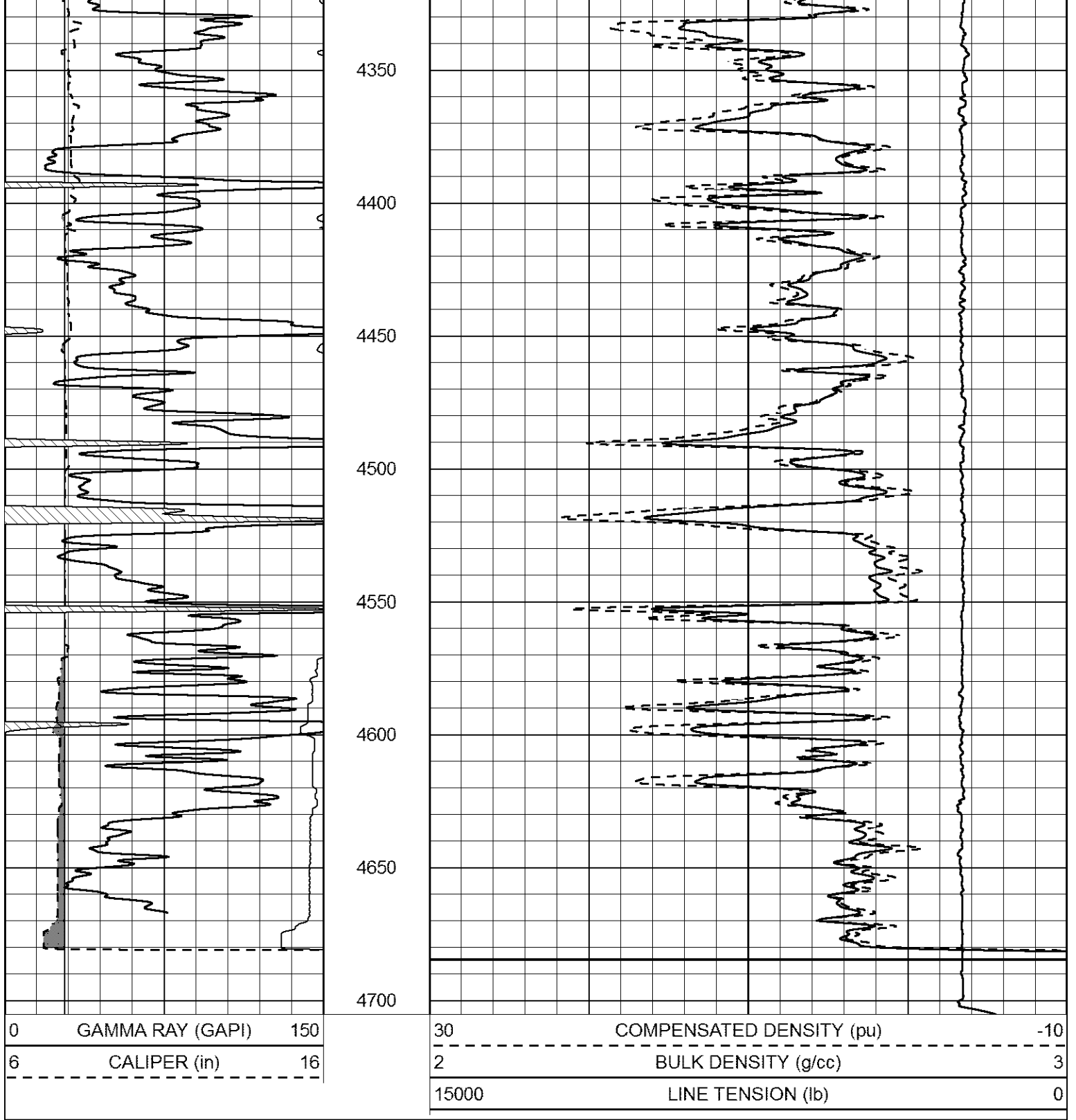
4150

4200

4250

4300





MAIN PASS

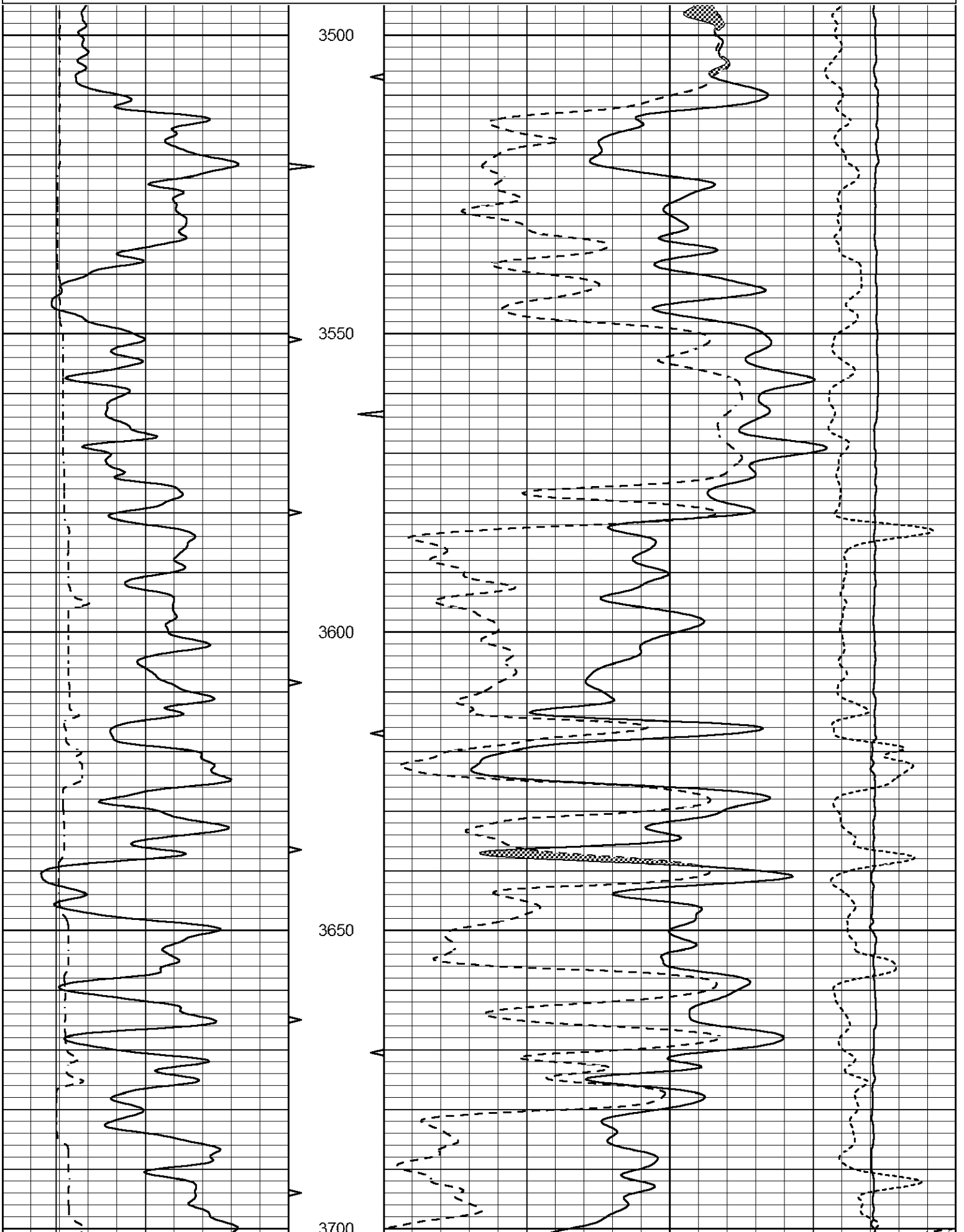
Database File carmen_schmitt_baalman_1_23.db
 Dataset Pathname stackml/pass3.1
 Presentation Format cndlspec
 Dataset Creation Mon May 18 21:58:57 2020
 Charted by Depth in Feet scaled 1:240



6 dcal (in) 16
6 BIT SIZE (in) 16

30 DPOR (pu) -10
15000 LINE TENSION (lb) 0

-0.25 RHOC (g/cc) 0.25



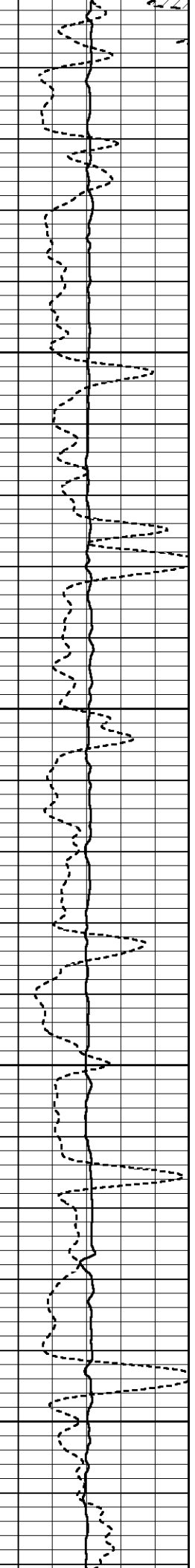
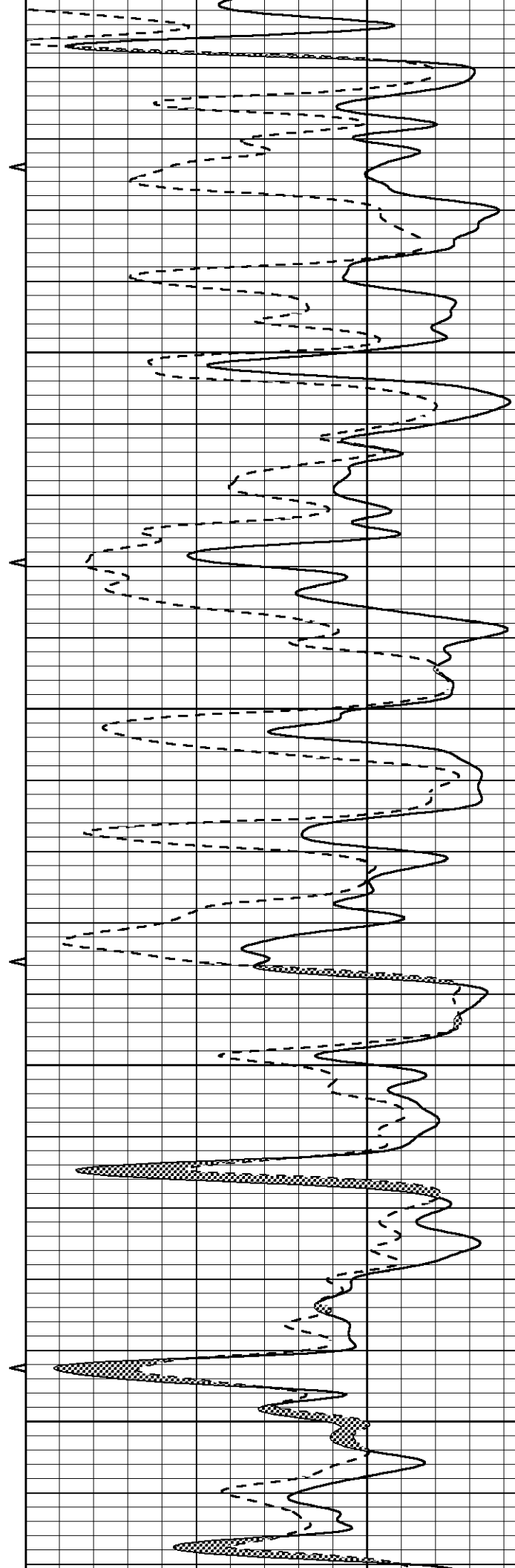
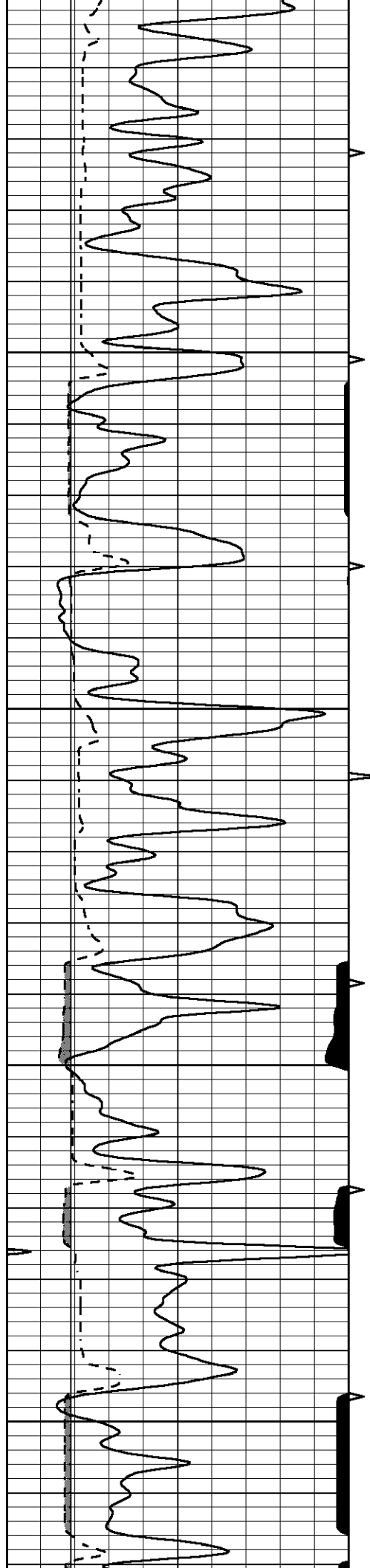
3700

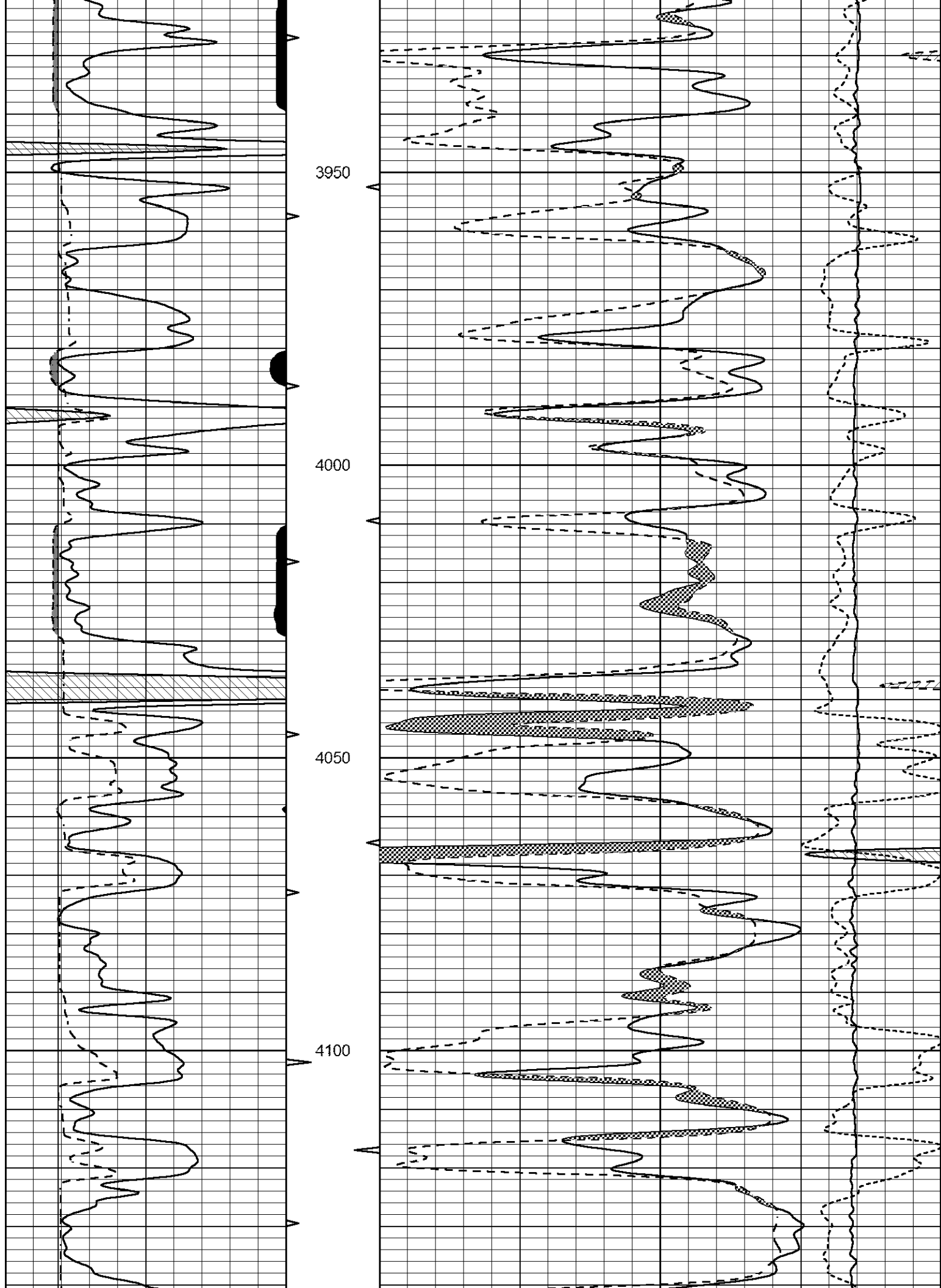
3750

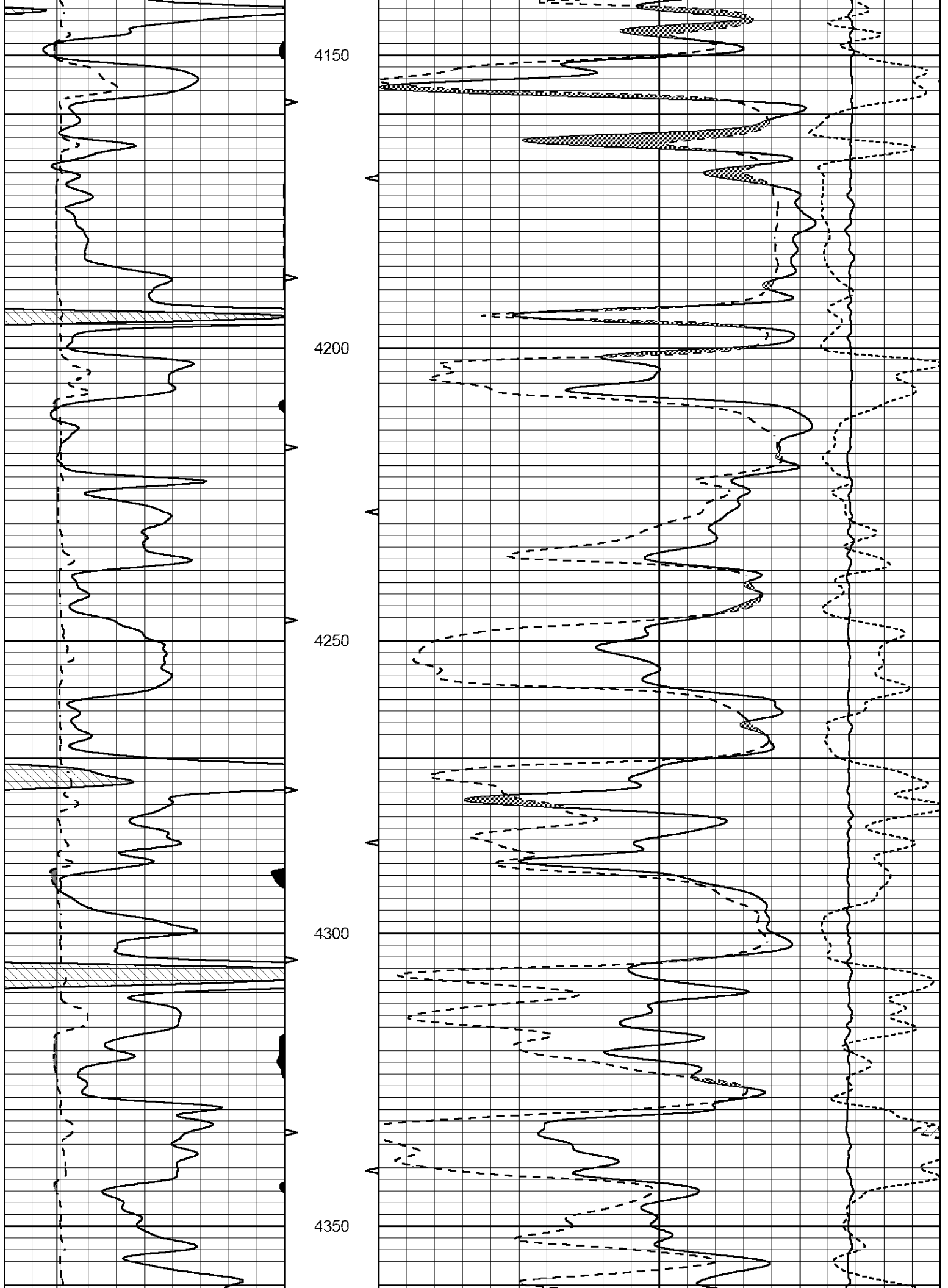
3800

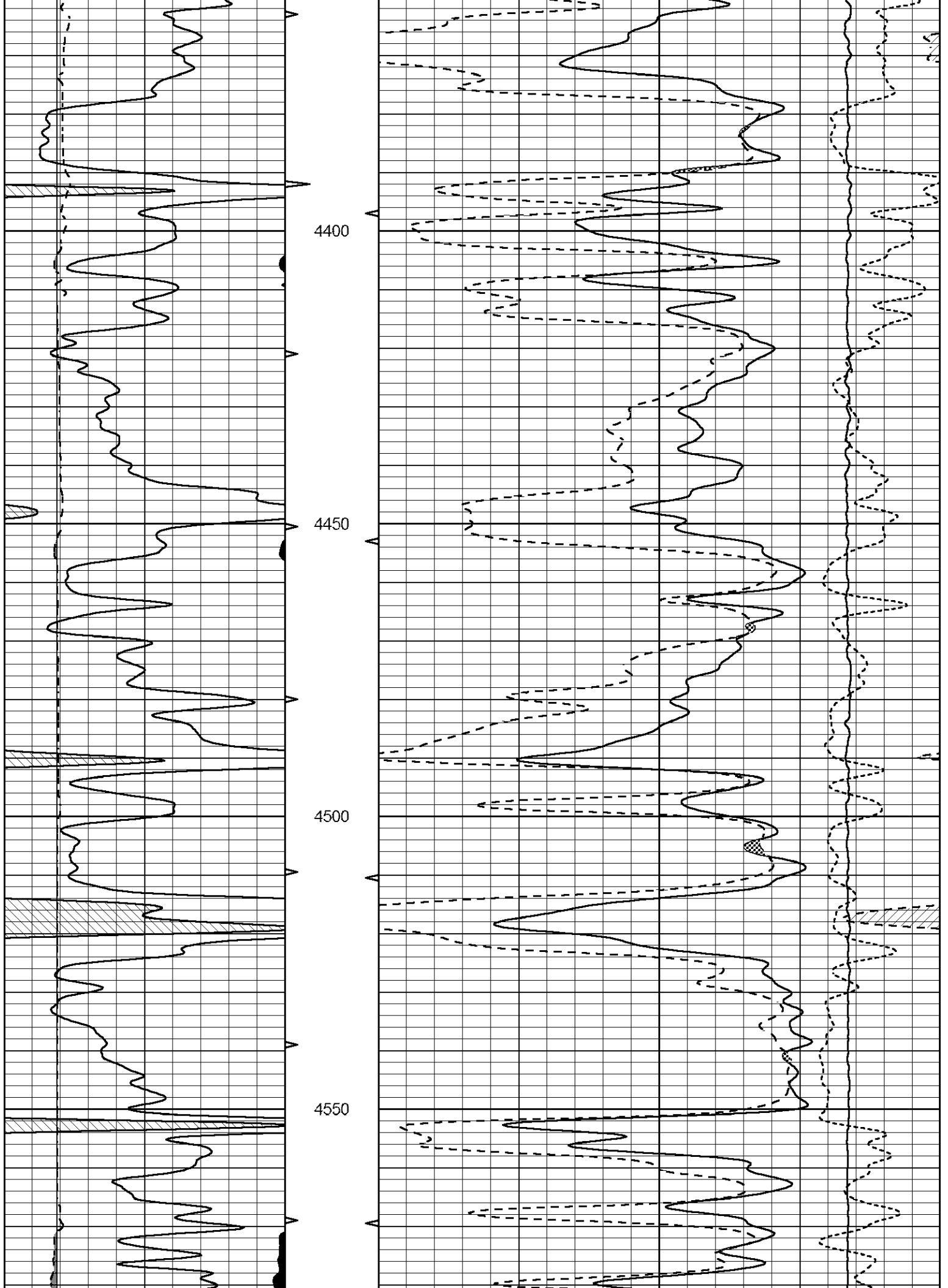
3850

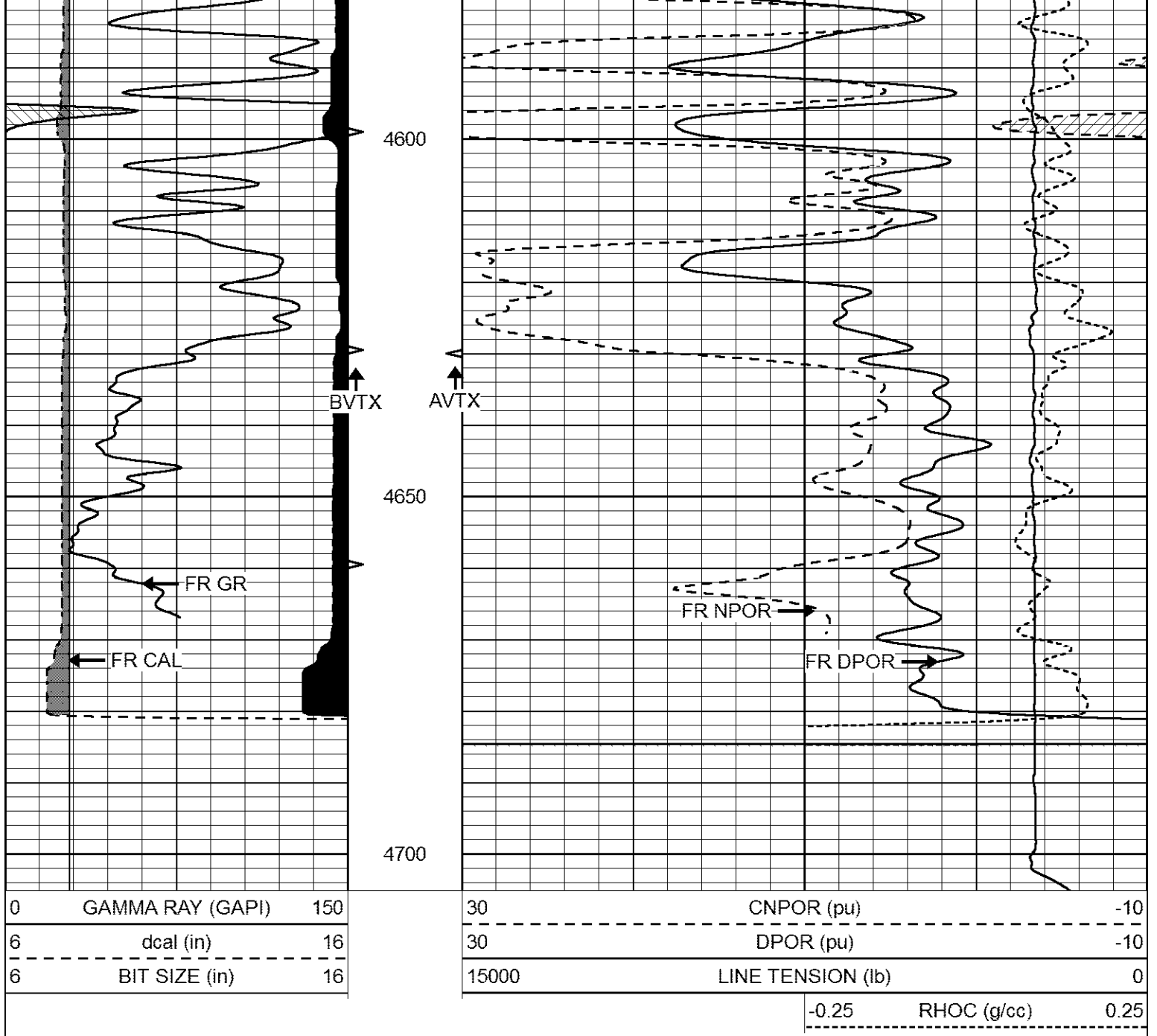
3900









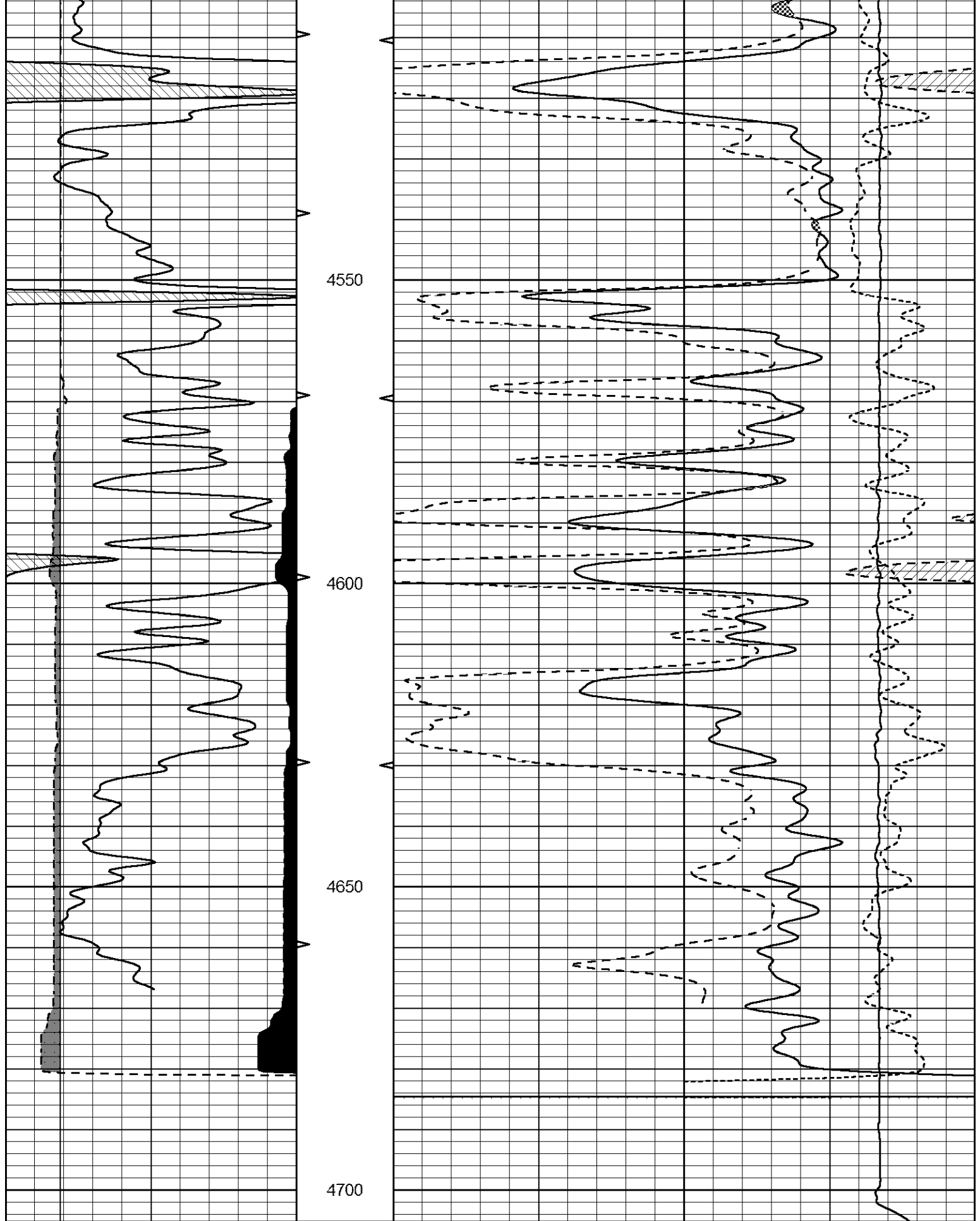


REPEAT SECTION

Database File carmen_schmitt_baalman_1_23.db
 Dataset Pathname stackml/pass2.1
 Presentation Format cndlspec
 Dataset Creation Mon May 18 21:59:07 2020
 Charted by Depth in Feet scaled 1:240

0	GAMMA RAY (GAPI)	150	30	CNPOR (pu)	-10
6	dcal (in)	16	30	DPOR (pu)	-10
6	BIT SIZE (in)	16	15000	LINE TENSION (lb)	0
			-0.25	RHOC (g/cc)	0.25





0	GAMMA RAY (GAPI)	150
6	dcal (in)	16
6	BIT SIZE (in)	16

30	CNPOR (pu)	-10
30	DPOR (pu)	-10
15000	LINE TENSION (lb)	0
-0.25	RHOC (g/cc)	0.25

Calibration Report

Database File carmen_schmitt_baalman_1_23.db
 Dataset Pathname stackml/pass3.1
 Dataset Creation Mon May 18 21:58:57 2020

Dual Induction Calibration Report

Serial-Model: 55-222-M&W
 Calibration Performed: Tue Dec 10 05:11:10 2019

Loop:	Readings		References			Results	
	Air	Loop	Air	Loop		Gain	Offset
Deep	167.000	835.000	0.000	255.800	mmho/m	0.540	-41.000
Medium	0.000	1348.000	142.000	255.800	mmho/m	0.410	-15.000

Microlog Calibration Report

Serial-Model: PSI-01-PSI STKBL ML
 Performed: Thu Mar 31 18:14:32 2016

	Readings		References			Results	
	Zero	Cal	Zero	Cal		m	b
Normal	0.0000	1.0000	0.0000	1.0000	Ohm-m	17500.0000	-1.7000
Inverse	0.0000	1.0000	0.0000	1.0000	Ohm-m	22500.0000	-1.6000
Caliper	1.0001	1.1397	6.5000	18.5000	in	86.0000	-80.5000

Compensated Density Calibration Report

Serial-Model: 915-956-M&W
 Source / Verifier: /
 Master Calibration Performed: Thu Mar 19 09:21:34 2020

Master Calibration

	Density		Far Detector	Near Detector	
Magnesium	1.755	g/cc	3668.53	4669.61	cps
Aluminum	2.675	g/cc	710.88	3056.05	cps
Spine Angle = 75.51			Density/Spine Ratio = 0.543		
	Size		Reading		
Small Ring	4.00	in	1.17		
Large Ring	14.00	in	1.05		

Compensated Neutron Calibration Report

Serial Number: tk10-MW
 Tool Model: M&W
 Calibration Performed: Wed Nov 16 11:21:36 2016

Detector	Readings	Target	Normalization
Short Space	6240.00 cps	1000.00 cps	1.6025

Short Space
Long Space

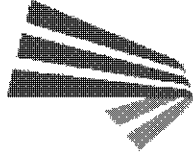
6240.00 cps
460.00 cps

1000.00 cps
1000.00 cps

1.0025
1.9500

Gamma Ray Calibration Report

Serial Number:	89-M&W	
Tool Model:	M&W	
Calibration Performed:	Tue Dec 10 05:11:34 2019	
Calibrator Value:	1000.0	GAPI
Background Reading:	0.0	cps
Calibrator Reading:	6.2	cps
Sensitivity:	0.5200	GAPI/cps



PIONEER
Pioneer Energy Services

Company	CARMEN SCHMITT, INC.
Well	BAALMAN #1-23
Field	WILDCAT
County	THOMAS
State	KANSAS