



MICRORESISTIVITY LOG

Company **CARMEN SCHMITT, INC.**
 Well **BAALMAN #1-23**
 Field **WILDCAT**
 County **THOMAS**
 State **KANSAS**

Company **CARMEN SCHMITT, INC.**
 Well **BAALMAN #1-23**
 Field **WILDCAT**
 County **THOMAS** State **KANSAS**

Location: **API #: 15-193-21077-00-00**
750' FNL & 2220' FEL
SEC 23 TWP 8S RGE 31W
 Permanent Datum **GROUND LEVEL Elevation 2968'**
 Log Measured From **KELLY BUSHING**
 Drilling Measured From **KELLY BUSHING**
 Other Services **CNL/CDL DIL/BHCS**
 Elevation **K.B. 2978'**
D.F. N/A
G.L. 2968'

Date	5/18/2020
Run Number	ONE
Depth Driller	4700'
Depth Logger	4702'
Bottom Logged Interval	4701'
Top Log Interval	3500'
Casing Driller	8.625" @ 253'
Casing Logger	262'
Bit Size	7.875"
Type Fluid in Hole	CHEMICAL
Salinity, ppm CL	4,000
Density / Viscosity	9.4 57
pH / Fluid Loss	8.0 10.0
Source of Sample	FLOWLINE
Rm @ Meas. Temp	.75 @ 73
Rmt @ Meas. Temp	.56 @ 73
Rmc @ Meas. Temp	1.01 @ 73
Source of Rmf / Rmc	CHARTS
Rm @ BHT	.45 @ 123
Operating Rig Time	4 HOURS
Max Rec. Temp. F	123 DEGF
Equipment Number	P-108
Location	HAYS
Recorded By	J. HENRICKSON
Witnessed By	BRAD RINE

<<< Fold Here >>>

All interpretations are opinions based on inferences from electrical or other measurements and Pioneer Wireline Services, LLC cannot and does not guarantee the accuracy or correctness of any interpretation, and Pioneer Wireline Services, LLC will not be liable or responsible for any loss, costs, damages, or expenses incurred or sustained by anyone resulting from any interpretation made by any of our officers, agents or employees.

Comments

N/A DENOTES NOT AVAILABLE OR NON-APPLICABLE.

HOXIE KANSAS
 WEST TO 36 ROAD, 2 SOUTH TO P ROAD,
 3/8 WEST, SOUTH INTO

Log Measured From: **KELLY BUSHING** 10 Ft. Above Permanent Datum

THANK YOU FOR USING PIONEER ENERGY SERVICES
www.pioneerenergy.com 785-625-3858

Your Pioneer Energy Services Crew Engineer: J. HENRICKSON Operator: Operator: Operator:	This Log Record Was Witnessed By Primary Witness: BRAD RINE Secondary Witness: Secondary Witness: Secondary Witness:
--	---

Log Variables

DatabaseC:\ProgramData\Warrior\Data\carmen_schmitt_baalman_1_23.db
Dataset field/well/stackml/pass3.1/_vars_

Top - Bottom

A	BOREID in	BOTTEMP degF	CASEOD in	CASETHCK in	FLUIDDEN g/cc	M	MATRXDEN g/cc
1	7.875	123	5.5	0	1	2	2.71
NPORSEL	PERFS	SNDERR mmho/m	SNDERRM mmho/m	SPSHIFT mV	SRFTEMP degF	SZCOR	TDEPTH ft
Limestone	0	0	0	150	74	Off	4702

Sensor	Offset (ft)	Schematic	Description	Length (ft)	O.D. (in)	Weight (lb)	
GR	40.58		GR-M&W (89-M&W)	3.00	3.50	50.00	
CNLSC	37.48		CNT-M&W (tk10-MW)	5.50	3.50	100.00	
CNSSC	36.73						
LSD	28.43		CDL-M&W (915-956)	8.50	4.00	250.00	
DCAL	28.42						
SSD	27.93						
ML-PSI STKBL ML (PSI-01)			ML-PSI STKBL ML (PSI-01) Stackable Microlog Tools	7.58	4.00	65.00	
MCAL	19.83						
MI	19.83						
MN	19.83						
RLL3	15.80						
RLL3F	15.79						
CILD	8.00		DIL-M&W (55-222)	18.50	3.50	220.00	

CILM

4.70

SP

0.20

Dataset: carmen_schmitt_baalman_1_23.db: field/well/stackml/pass3.1
 Total length: 43.08 ft
 Total weight: 685.00 lb
 O.D.: 4.00 in

PIONEER

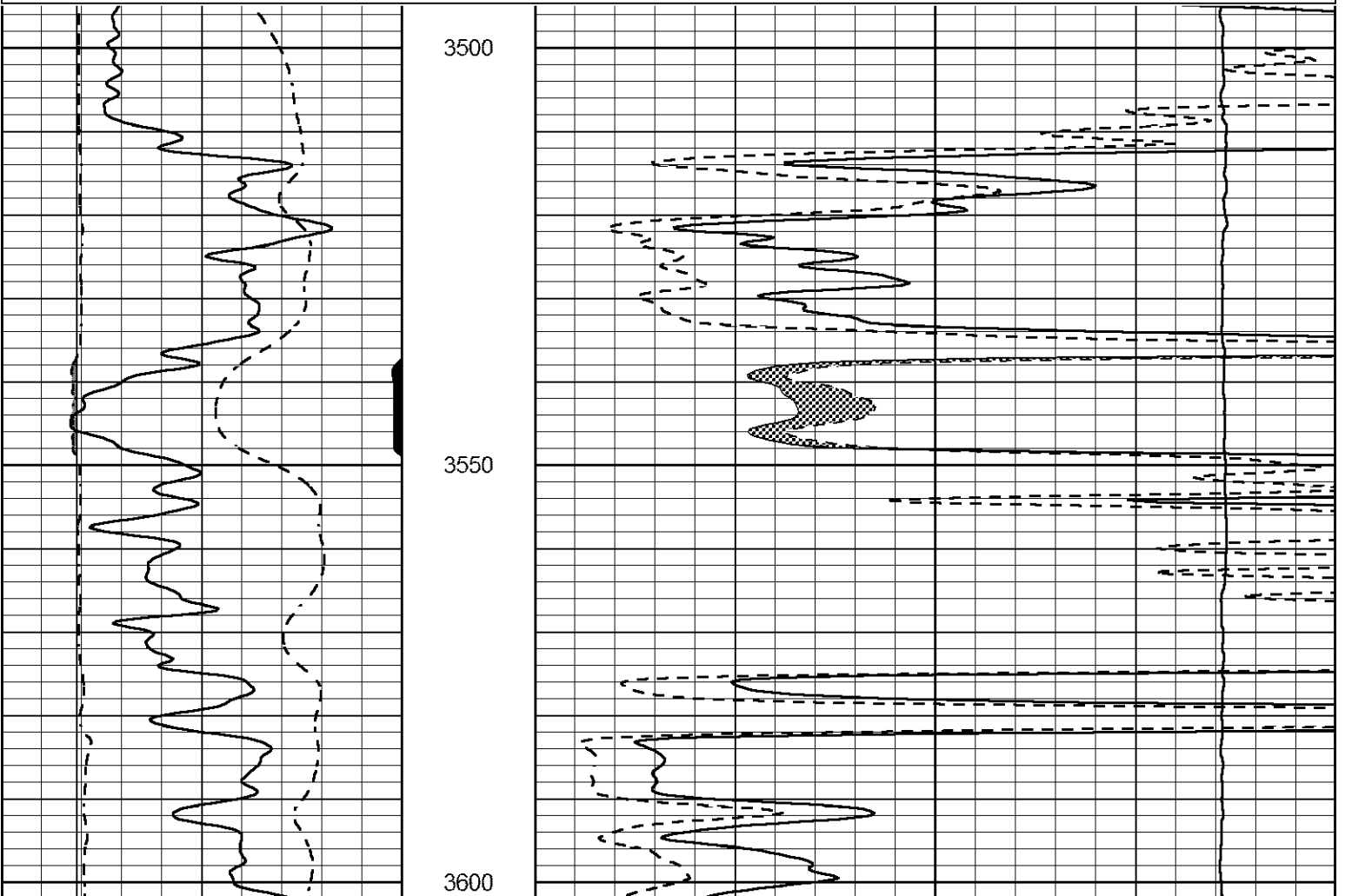
Pioneer Energy Services

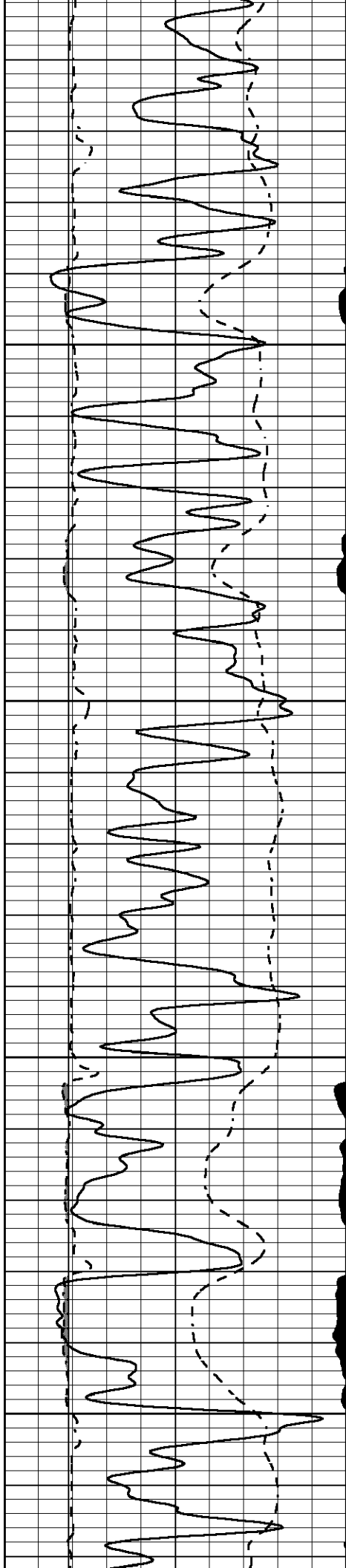
MAIN PASS

Database File carmen_schmitt_baalman_1_23.db
 Dataset Pathname stackml/pass3.1
 Presentation Format micro
 Dataset Creation Mon May 18 21:58:57 2020
 Charted by Depth in Feet scaled 1:240

0	GAMMA RAY (GAPI)	150
6	MICRO CALIPER (in)	16
6	BIT SIZE (in)	16
-200	SP (mV)	0

0	MICRO INVERSE 1 X 1 (Ohm-m)	40
0	MICRO NORMAL 2" (Ohm-m)	40
15000	LINE TENSION (lb)	0



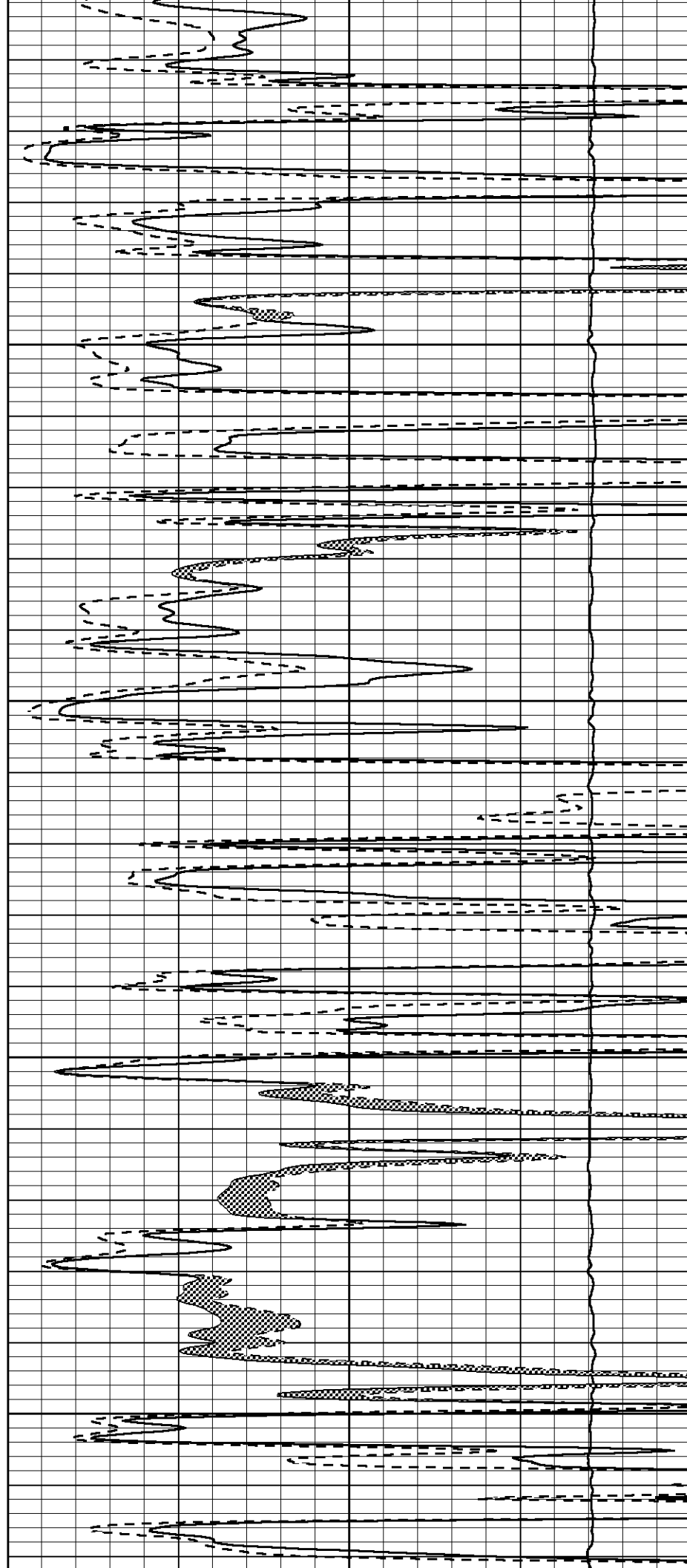


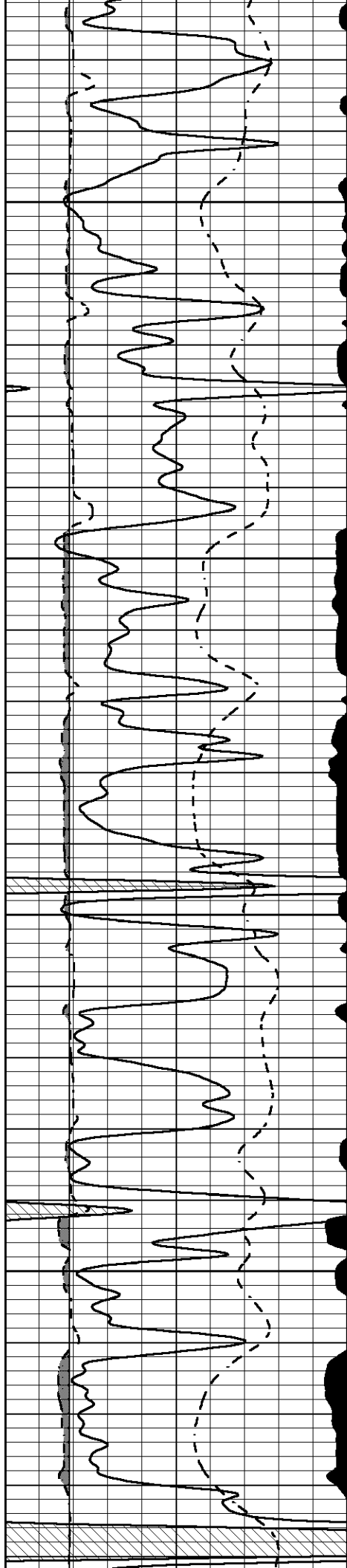
3650

3700

3750

3800



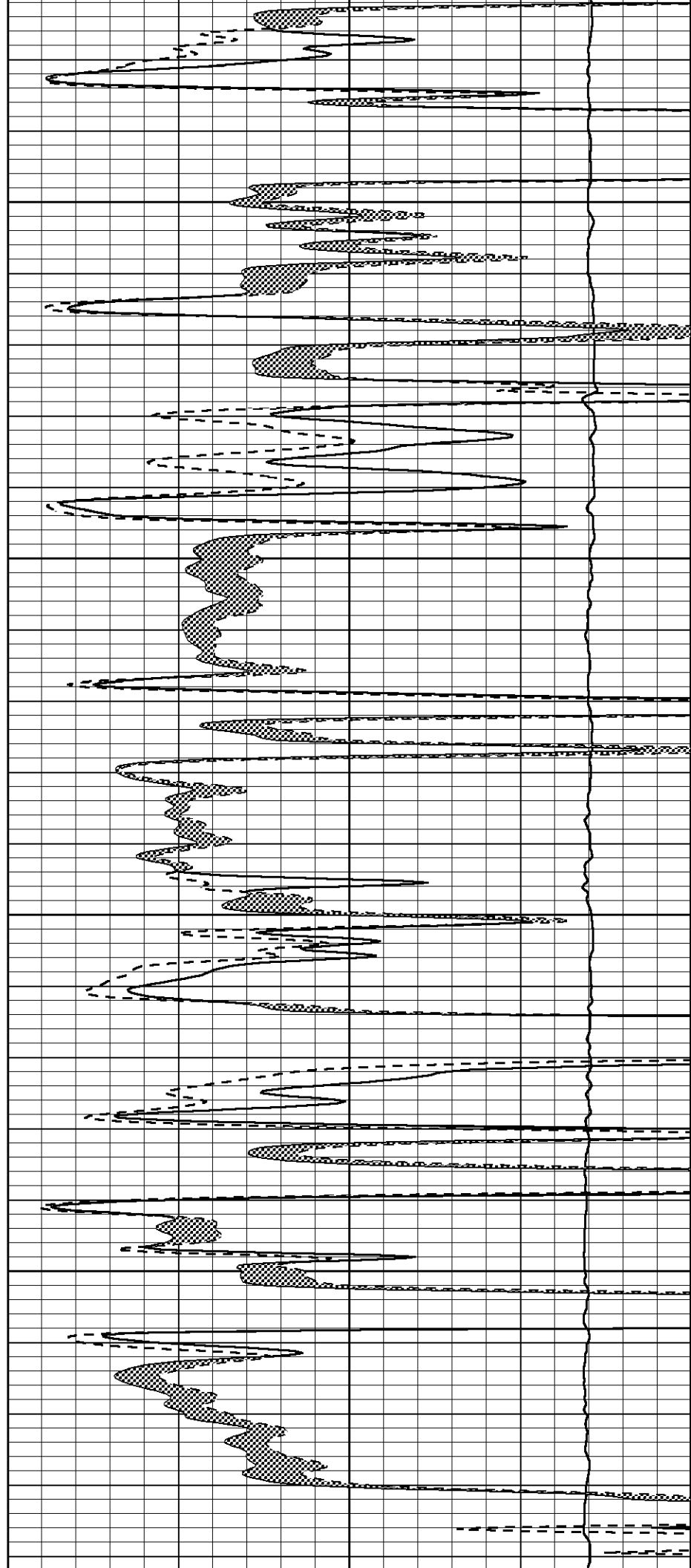


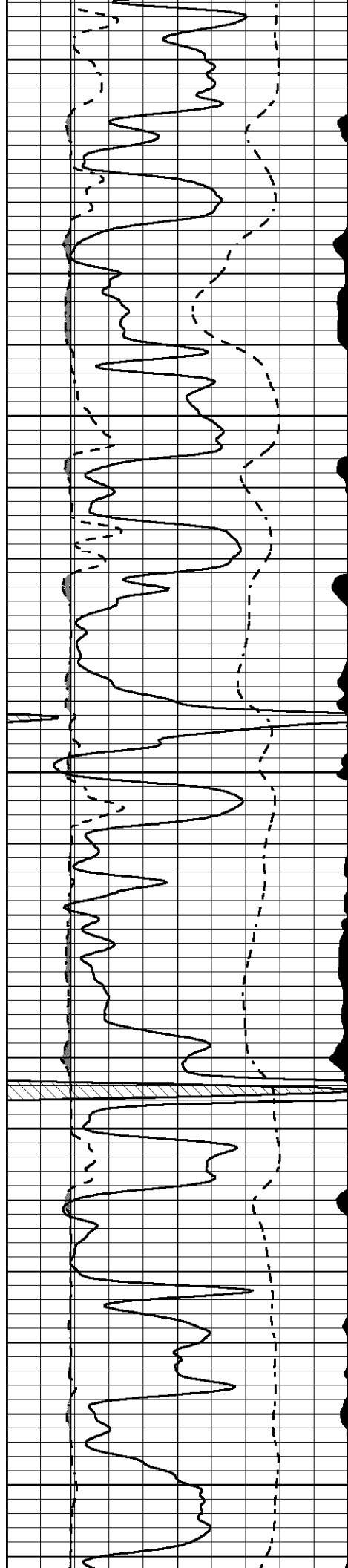
3850

3900

3950

4000





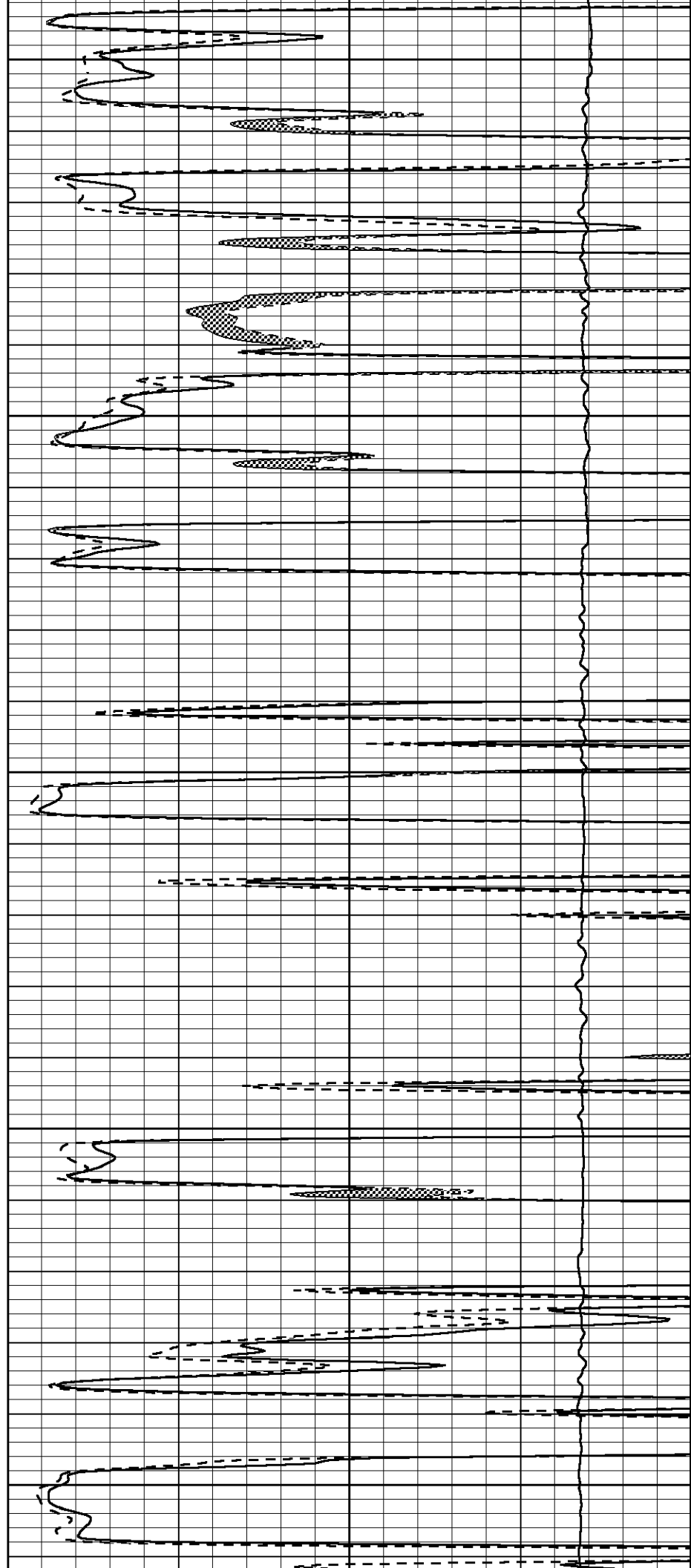
4050

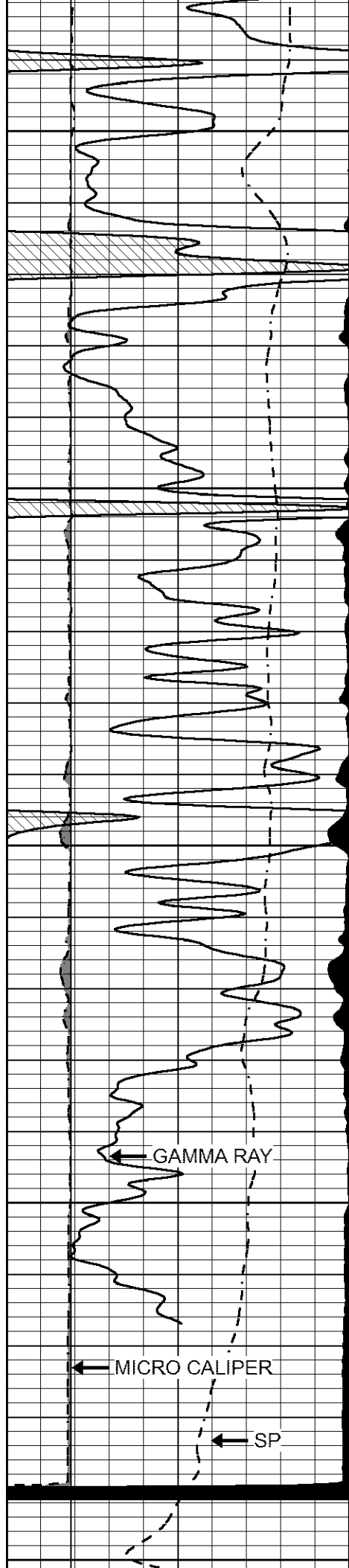
4100

4150

4200

4250





4500

4550

4600

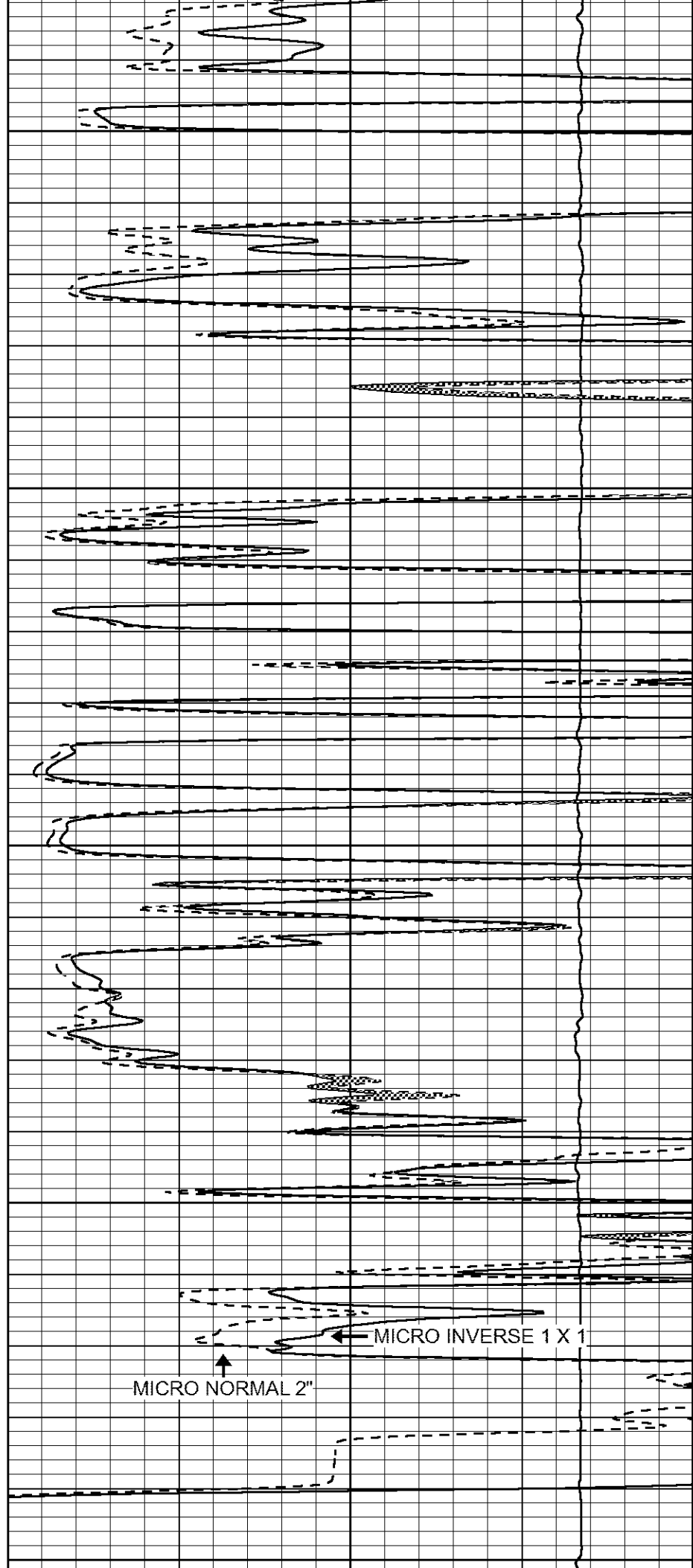
4650

4700

GAMMA RAY

MICRO CALIPER

SP



MICRO INVERSE 1 X 1

MICRO NORMAL 2"

0	GAMMA RAY (GAPI)	150
6	MICRO CALIPER (in)	16
6	BIT SIZE (in)	16
-200	SP (mV)	0

0	MICRO INVERSE 1 X 1 (Ohm-m)	40
0	MICRO NORMAL 2" (Ohm-m)	40
15000	LINE TENSION (lb)	0

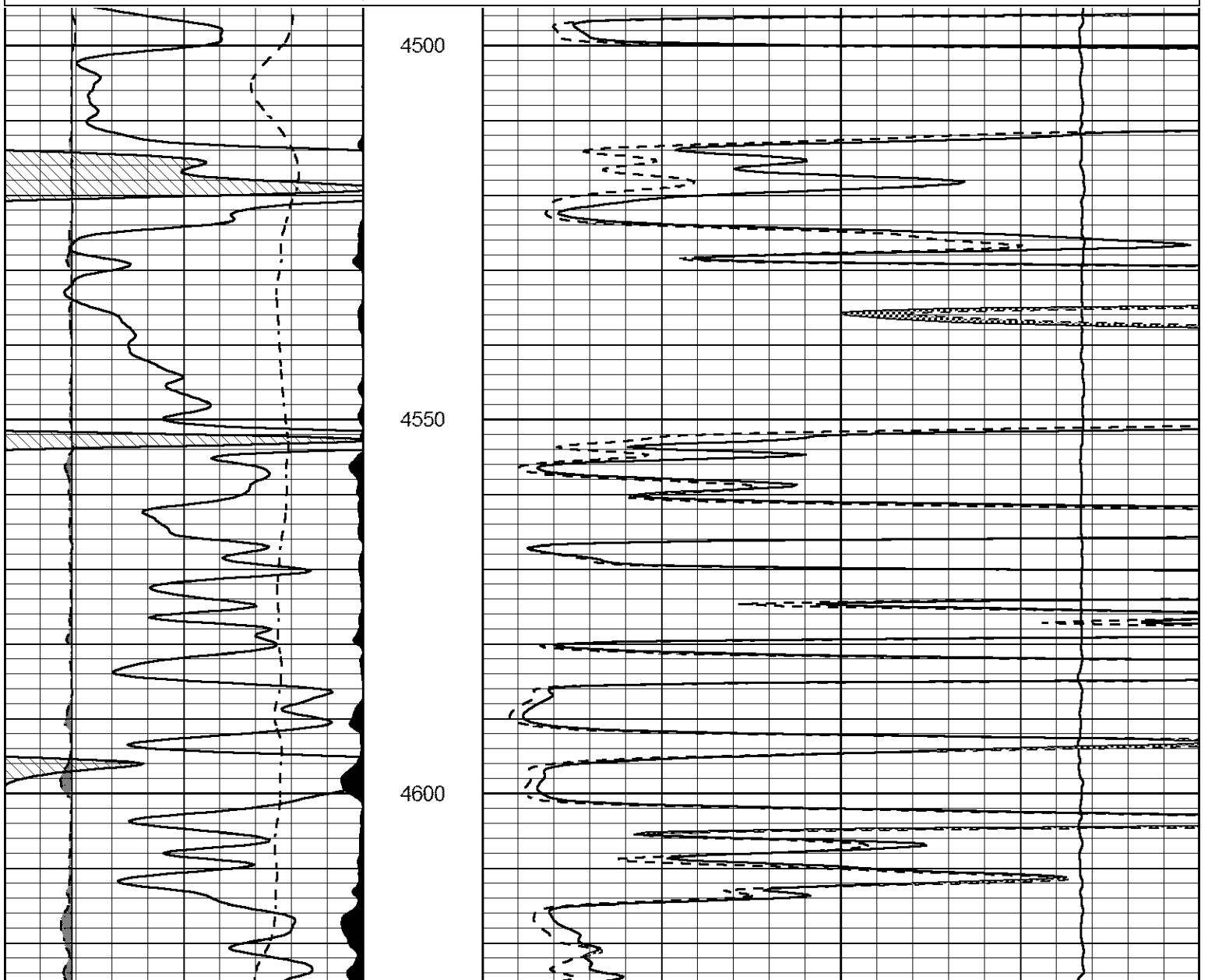


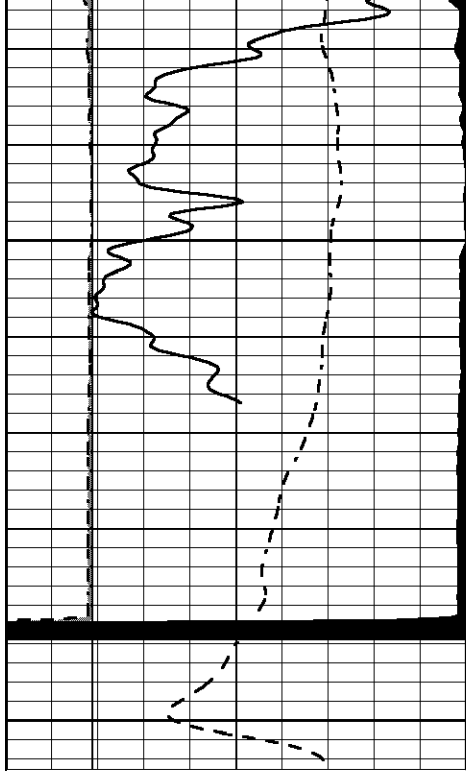
REPEAT SECTION

Database File carmen_schmitt_baalman_1_23.db
 Dataset Pathname stackml/pass2.1
 Presentation Format micro
 Dataset Creation Mon May 18 21:59:07 2020
 Charted by Depth in Feet scaled 1:240

0	GAMMA RAY (GAPI)	150
6	MICRO CALIPER (in)	16
6	BIT SIZE (in)	16
-200	SP (mV)	0

0	MICRO INVERSE 1 X 1 (Ohm-m)	40
0	MICRO NORMAL 2" (Ohm-m)	40
15000	LINE TENSION (lb)	0

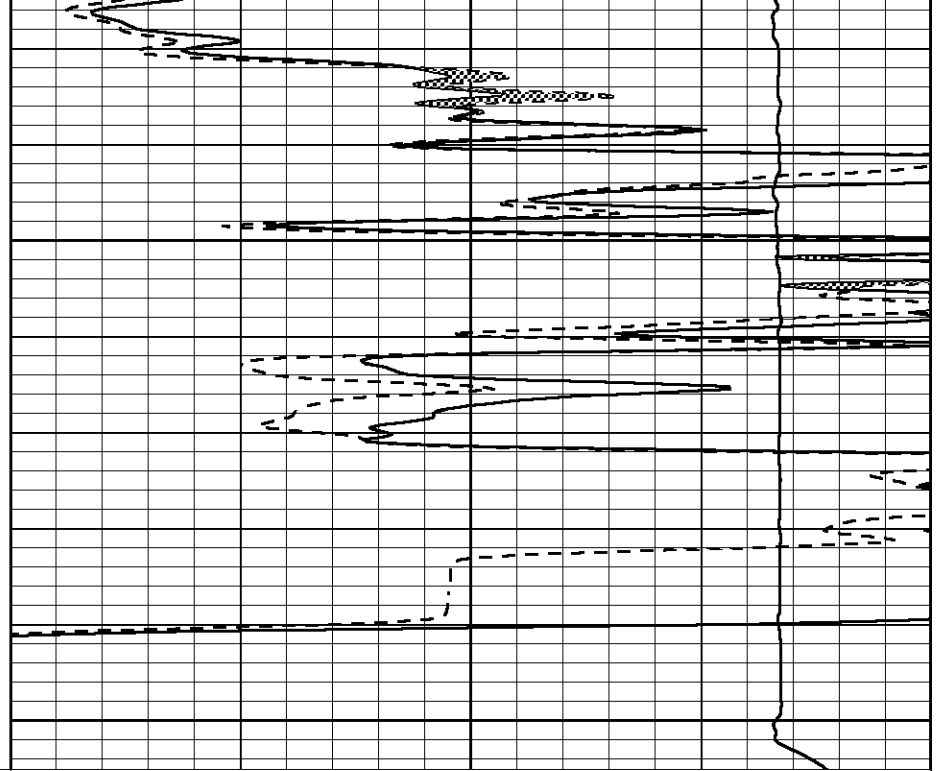




4650

4700

0	GAMMA RAY (GAPI)	150
6	MICRO CALIPER (in)	16
6	BIT SIZE (in)	16
-200	SP (mV)	0



0	MICRO INVERSE 1 X 1 (Ohm-m)	40
0	MICRO NORMAL 2" (Ohm-m)	40
15000	LINE TENSION (lb)	0



PIONEER

Pioneer Energy Services

Company CARMEN SCHMITT, INC.
 Well BAALMAN #1-23
 Field WILDCAT
 County THOMAS
 State KANSAS