

**Sonic Cement
Bond Log**

Company: Woolsey Operating Company, LLC.
Well: Parker #1
Field: Wildcat
County: Sumner
Location: 2310 FNJ & 1890' FEL
W/2 - SE - SW - NE
State: Kansas

APL No.	15-191-22816-0000
Company	Woolsey Operating Company, LLC.
Well	Parker #1
Field	Wildcat
County	Sumner
Location	2310 FNJ & 1890' FEL W/2 - SE - SW - NE
State	Kansas
Sec.	26
Ground Level	Temp. 30S
Log Measured From	Elevation 1214
Kelly Bushing	5 Ft. Above Perm. Datum
Dilling Measured From	KG 1214
Run Number	One
Date Survey	6/15/2020
Date Cementing	3/18/2020
Type Cementing Operation	Primary
Depth (feet)	3108
Logged Interval	3108 to 2550
Fastest Driller	3/3
D.V. Tool	10/
Sealcase Depth	3/3
Amount & Type Cement	3/3
Types Fluid In Hole	Water
Fluid Level	Full
Salinity PPM CL	3/3
Weight (lb/gal) - Vis	2700
Approx. Logged Cement Top	3/3
Calculated Cement Top	3/3
Max. Hole Temperature	3/3
Tool No.	DIG02
Spinning Recorded	02
Equipment - Location	3-5 Pratt
Requested By	N. Schneider
Reviewed By	Bill Gallauder

All interpretations are opinions based on inferences from electrical or other measurements and we cannot and do not guarantee the accuracy or correctness of any interpretation, and we shall not, except in the case of gross or willful negligence on our part, be liable or responsible for any loss, costs, damages, or expenses incurred or sustained by anyone resulting from any interpretation made by any of our officers, agents or employees. These interpretations are also subject to our general terms and conditions set out in our current Price Schedule.

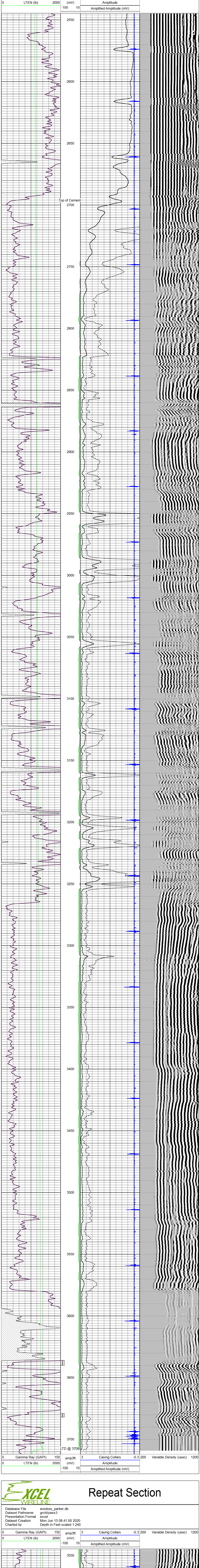
Comments

Thank you for using Excel Wireline (620) 388-5676

Belle Plain
2 N to 110th Ave N
1/2 W
S into

Main Pass

Database File: woolsey_parker.db
 Dataset Pathname: grcb/pass4
 Presentation Format: excel
 Dataset Creation: Mon Jun 15 08:46:09 2020
 Charted by: Depth in Feet scaled 1:240



Repeat Section

Database File: woolsey_parker.db
 Dataset Pathname: grcb/pass3
 Presentation Format: excel
 Dataset Creation: Mon Jun 15 08:41:00 2020
 Charted by: Depth in Feet scaled 1:240

