



**MICRO
LOG**

Company WOOLSEY OPERATING CO. LLC.
 Well PARKER #1
 Field WILDCAT
 County SUMNER
 State KANSAS

Company WOOLSEY OPERATING COMPANY, LLC.
 Well PARKER #1
 Field WILDCAT
 County SUMNER State KANSAS

Location: API # : 15-191-22816-0000
 2310' FNL & 1890' FEL
 W/2 - SE - SW - NE
 SEC 26 TWP 30S RGE 1E
 Permanent Datum GROUND LEVEL Elevation 1214
 Log Measured From KELLY BUSHING 5' A.G.L.
 Drilling Measured From KELLY BUSHING
 Elevation
 K.B. 1219
 D.F. 1217
 G.L. 1214

Date	3/17/20		
Run Number	TWO		
Depth Driller	3785		
Depth Logger	3785		
Bottom Logged Interval	3769		
Top Log Interval	2000		
Casing Driller	8 5/8" @ 310'		13 3/8" @ 76'
Casing Logger	308		
Bit Size	7 7/8"		
Type Fluid in Hole	CHEMICAL MUD		CHLORIDES 3,000 PPM
Density / Viscosity	9.3/52		
pH / Fluid Loss	10.0/7.2		
Source of Sample	FLOWLINE		
Rim @ Meas. Temp	.770 @ 82F		
Rmf @ Meas. Temp	.578 @ 82F		
Rmc @ Meas. Temp	.924 @ 82F		
Source of Rmf / Rmc	MEASUREMENT		
Rim @ BHT	.554 @ 114F		
Time Circulation Stopped	4 HOURS		
Time Logger on Bottom	10:00 A.M.		
Maximum Recorded Temperature	114F		
Equipment Number	922339		
Location	HAYS, KANSAS		
Recorded By	JEFF LUEBBERS		
Witnessed By	BLAKE MILLER		

<<< Fold Here >>>

All interpretations are opinions based on inferences from electrical or other measurements and we cannot and do not guarantee the accuracy or correctness of any interpretation, and we shall not, except in the case of gross or willful negligence on our part, be liable or responsible for any loss, costs, damages, or expenses incurred or sustained by anyone resulting from any interpretation made by any of our officers, agents or employees. These interpretations are also subject to our general terms and conditions set out in our current Price Schedule.

Comments

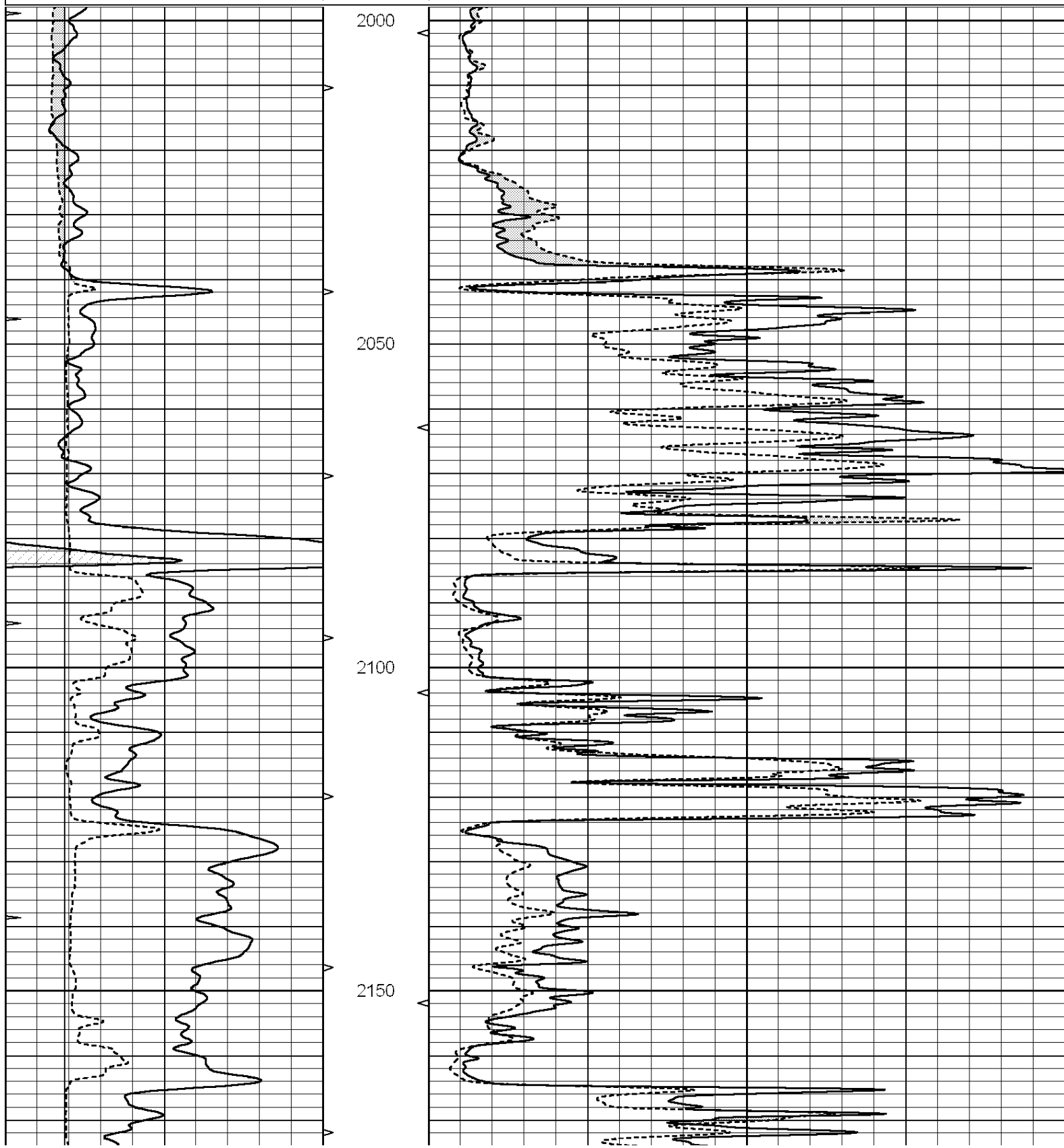
THANK YOU FOR USING E.L.I. WIRELINE SERVICES
 (785)628-6395
 DIRECTIONS
 BELLE PLAIN, KS., 2N., 1/2W., S. INTO

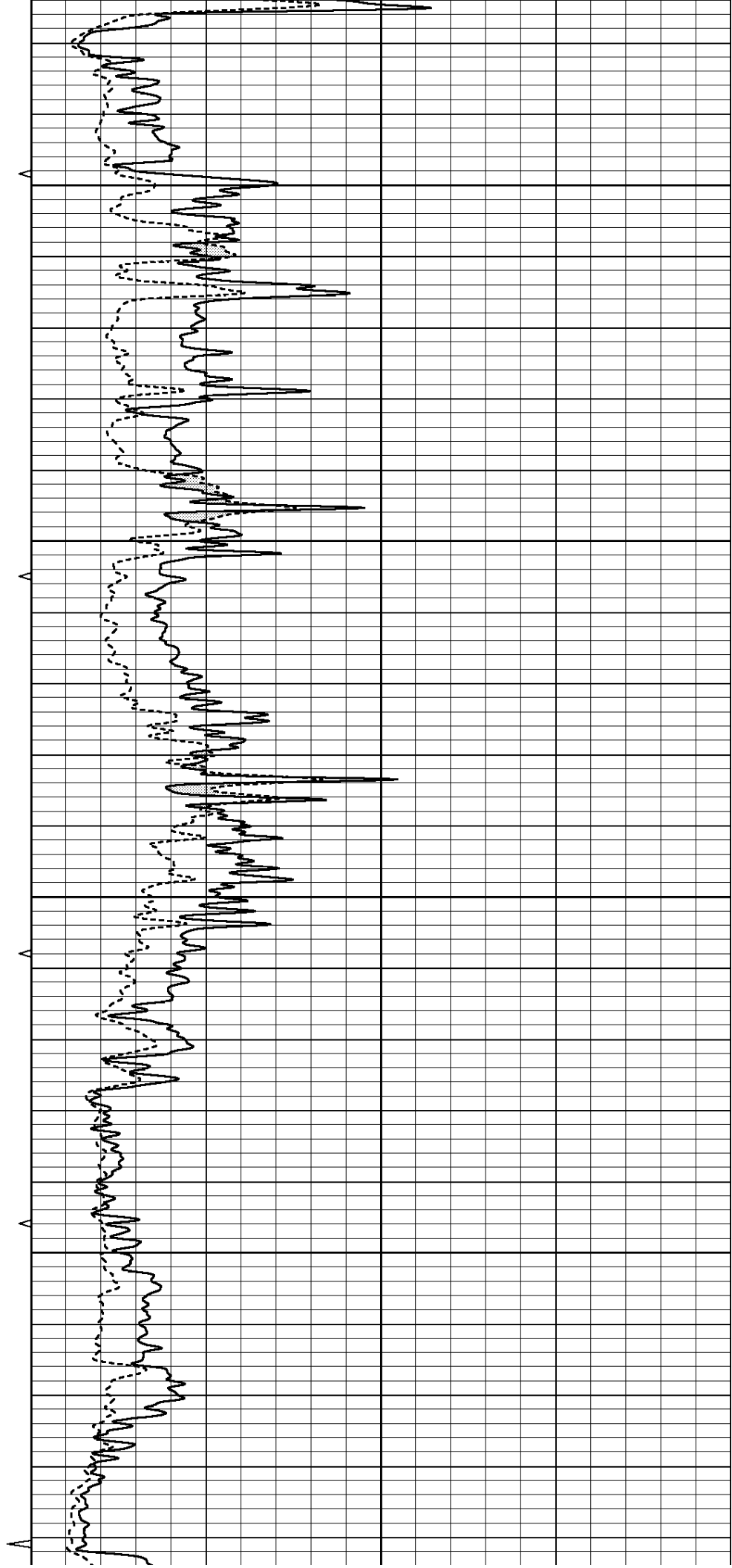
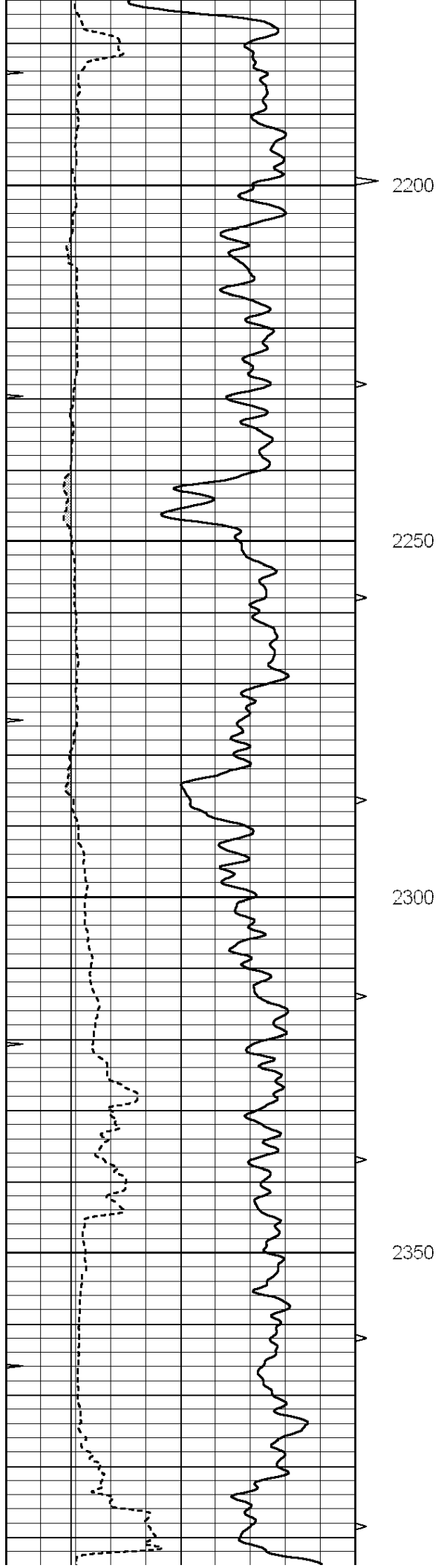


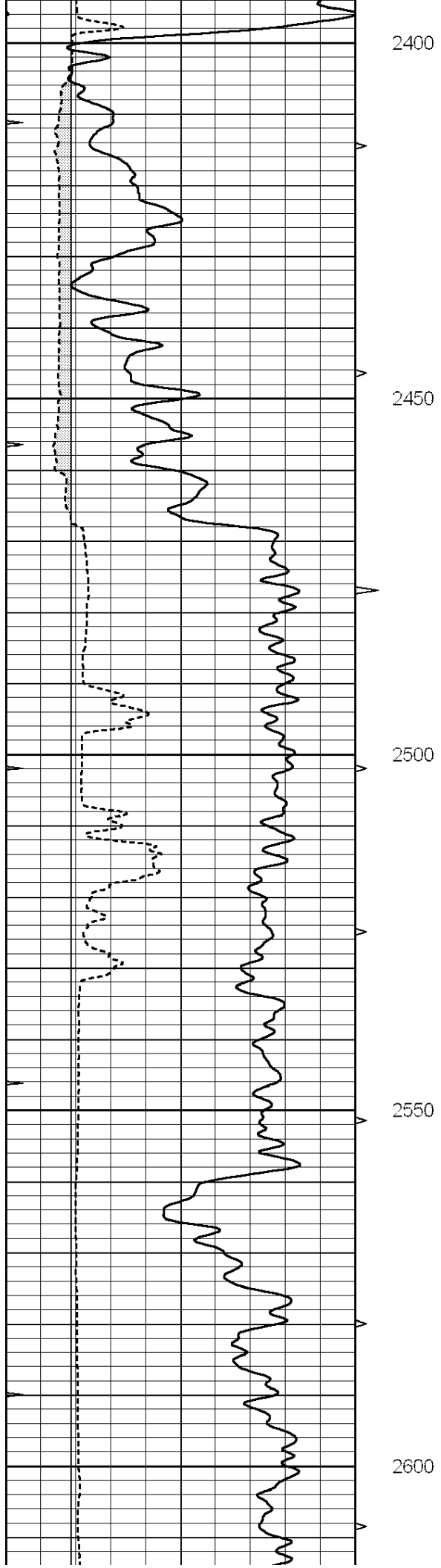
MAIN SECTION

Database File: 4537pe.db
 Dataset Pathname: pass6.3
 Presentation Format: micro
 Dataset Creation: Tue Mar 17 11:12:53 2020
 Charted by: Depth in Feet scaled 1:240

0	GAMMA RAY (GAPI)	150	ABHV	0	MEL1.5 (Ohm-m)	40
6	CALIPER (in)	16	10 (ft3)	0	MEL 20 (Ohm-m)	40
0	MINMK	20	TBHV			
			0 (ft3)	10		







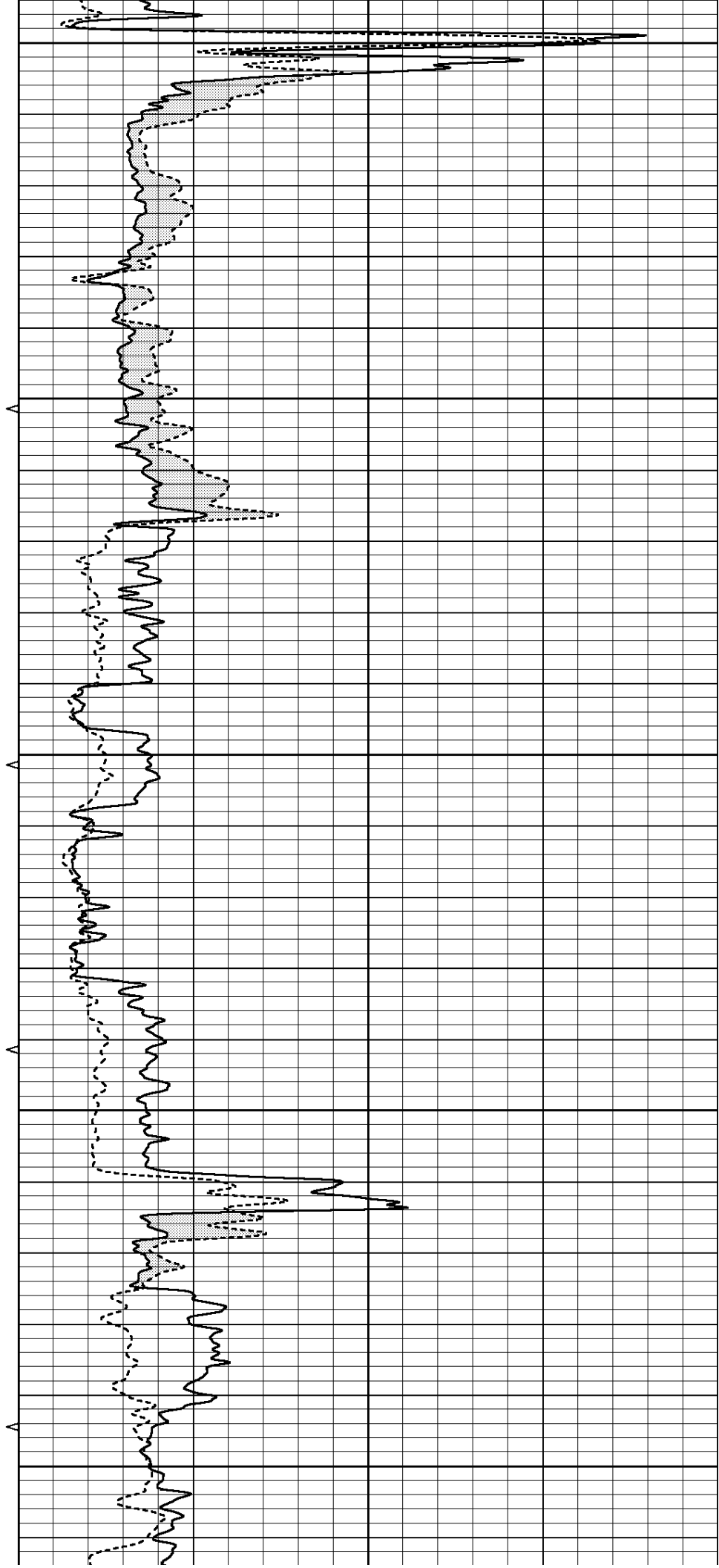
2400

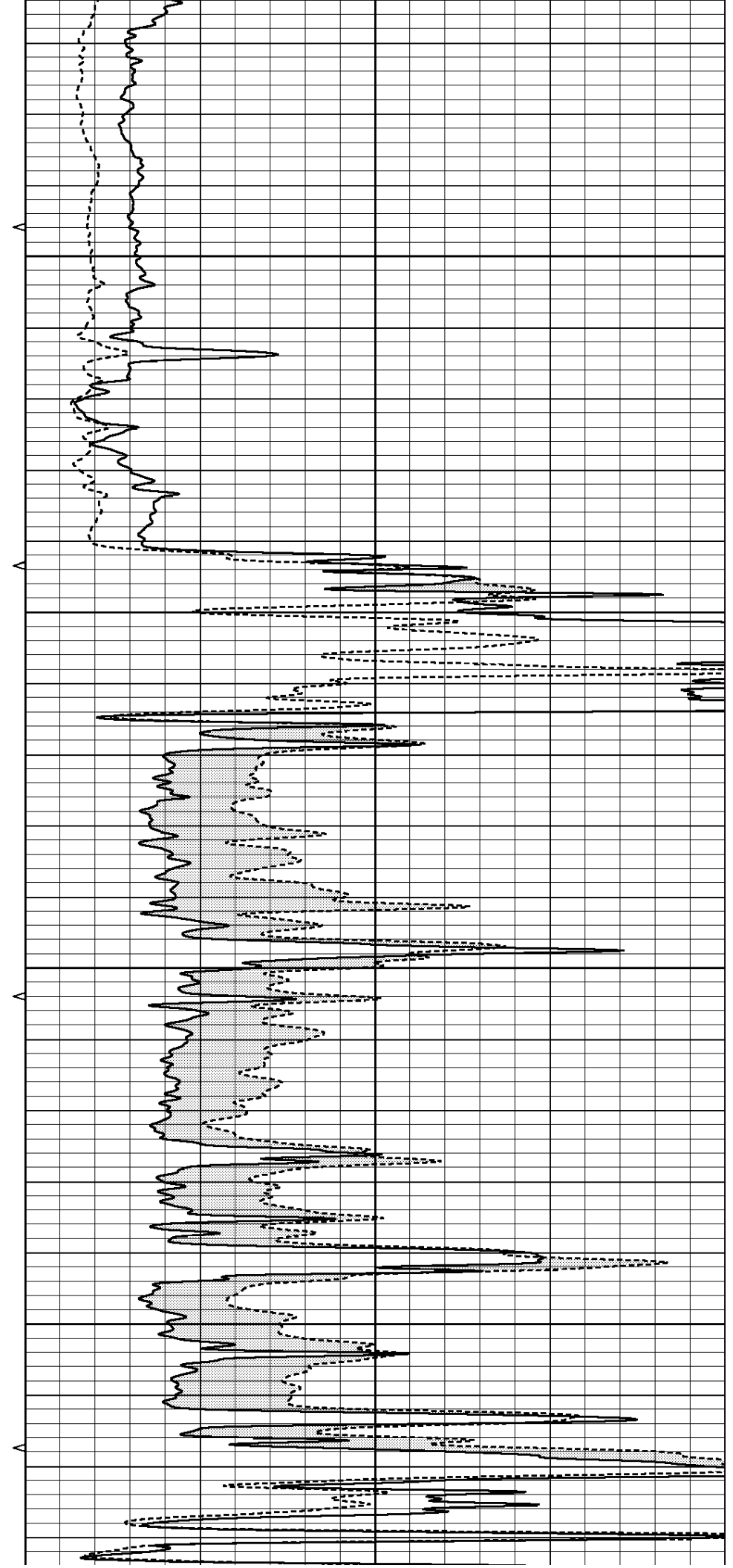
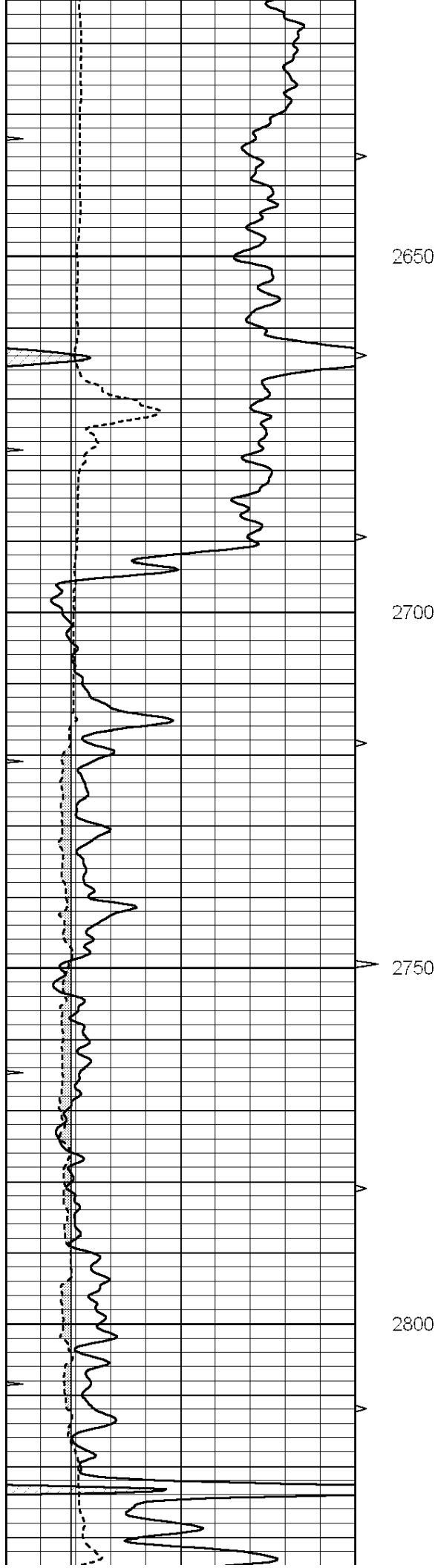
2450

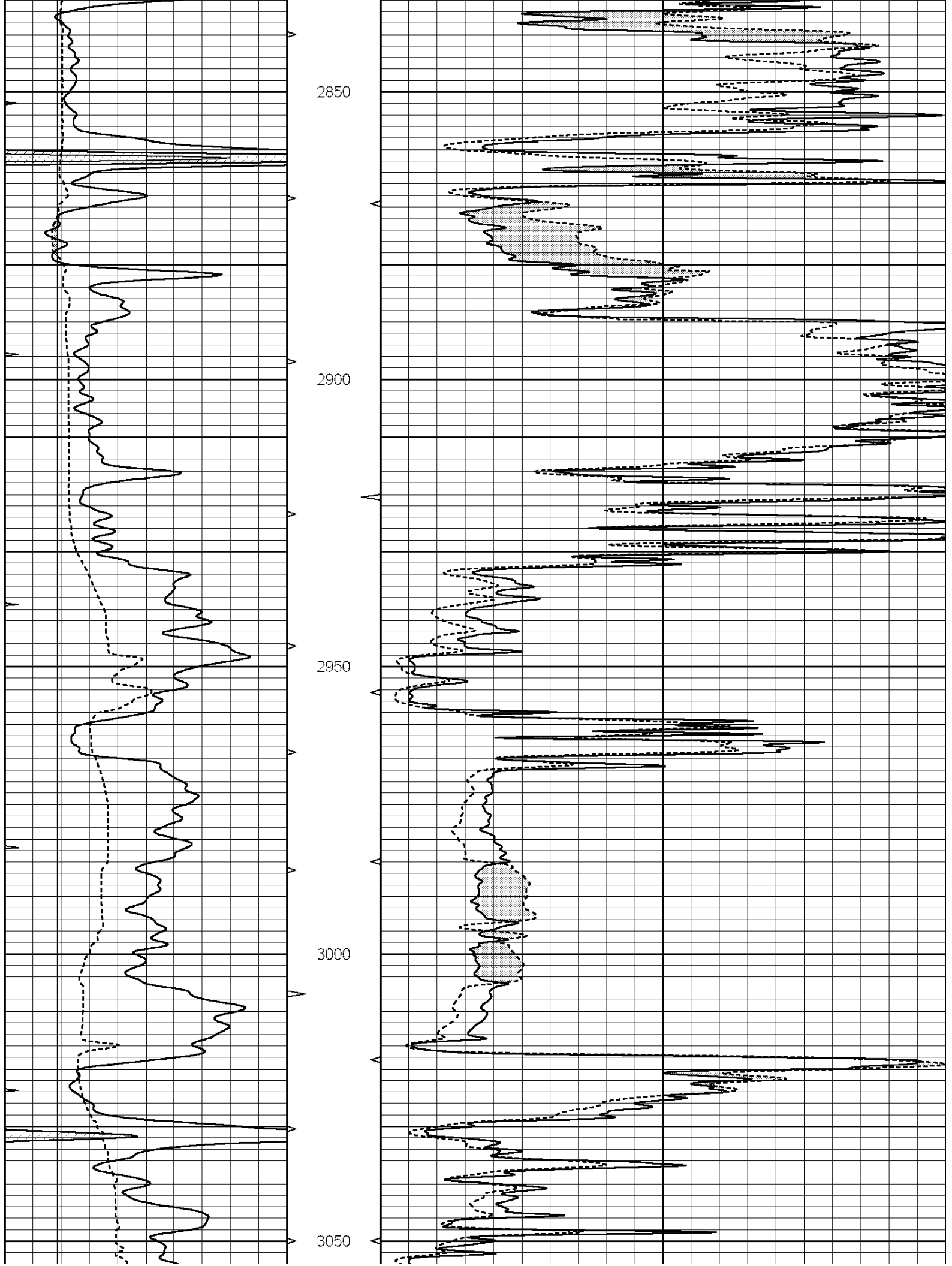
2500

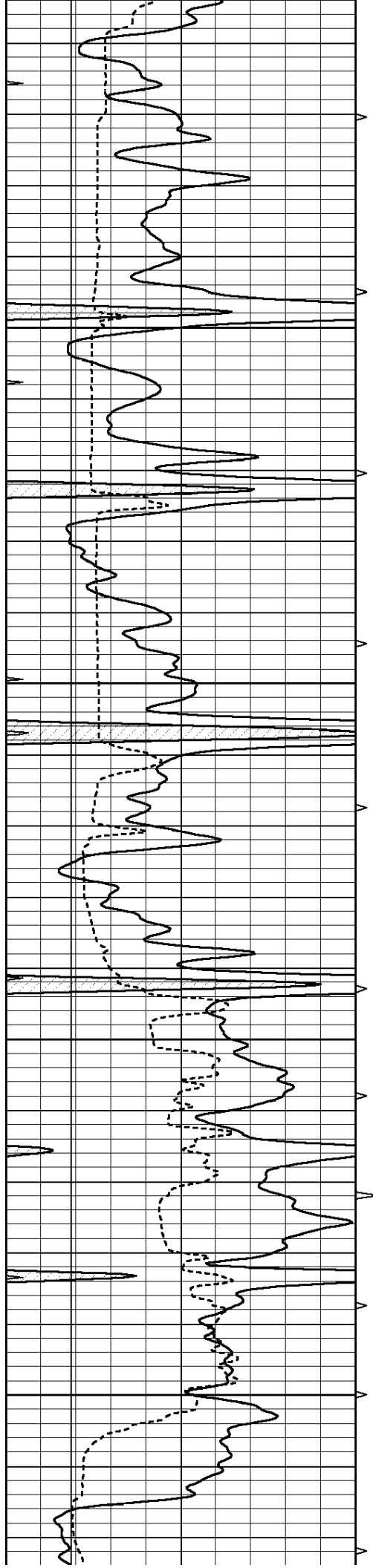
2550

2600







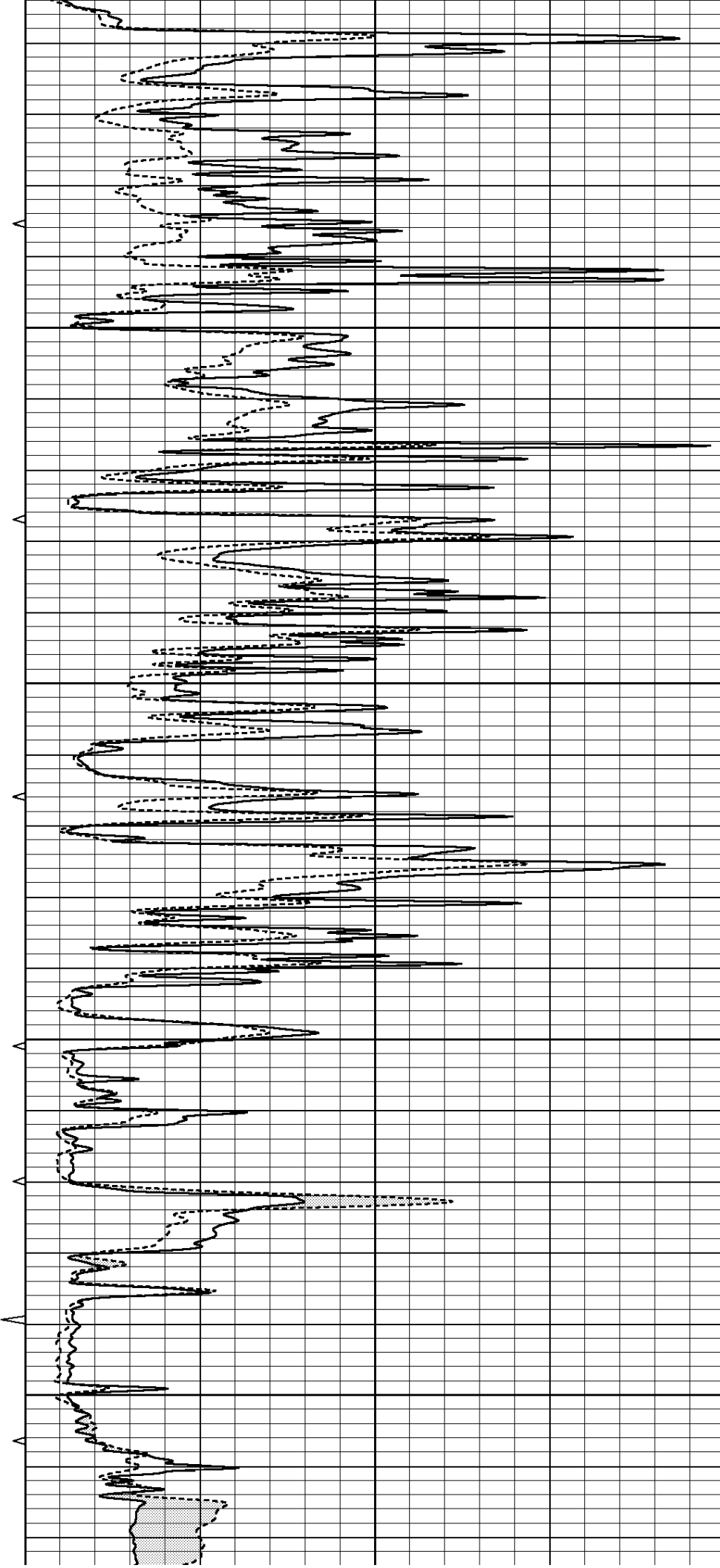


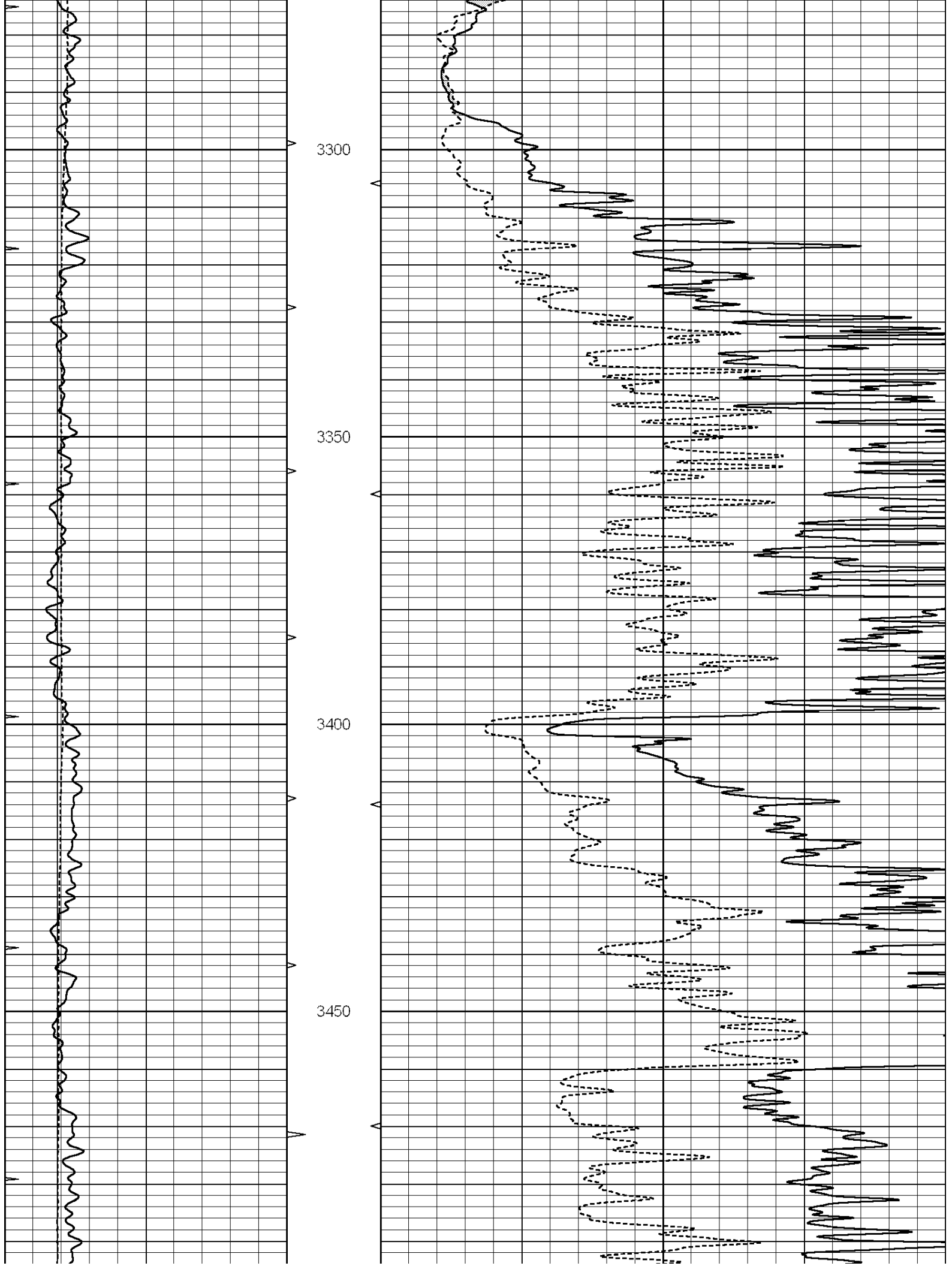
3100

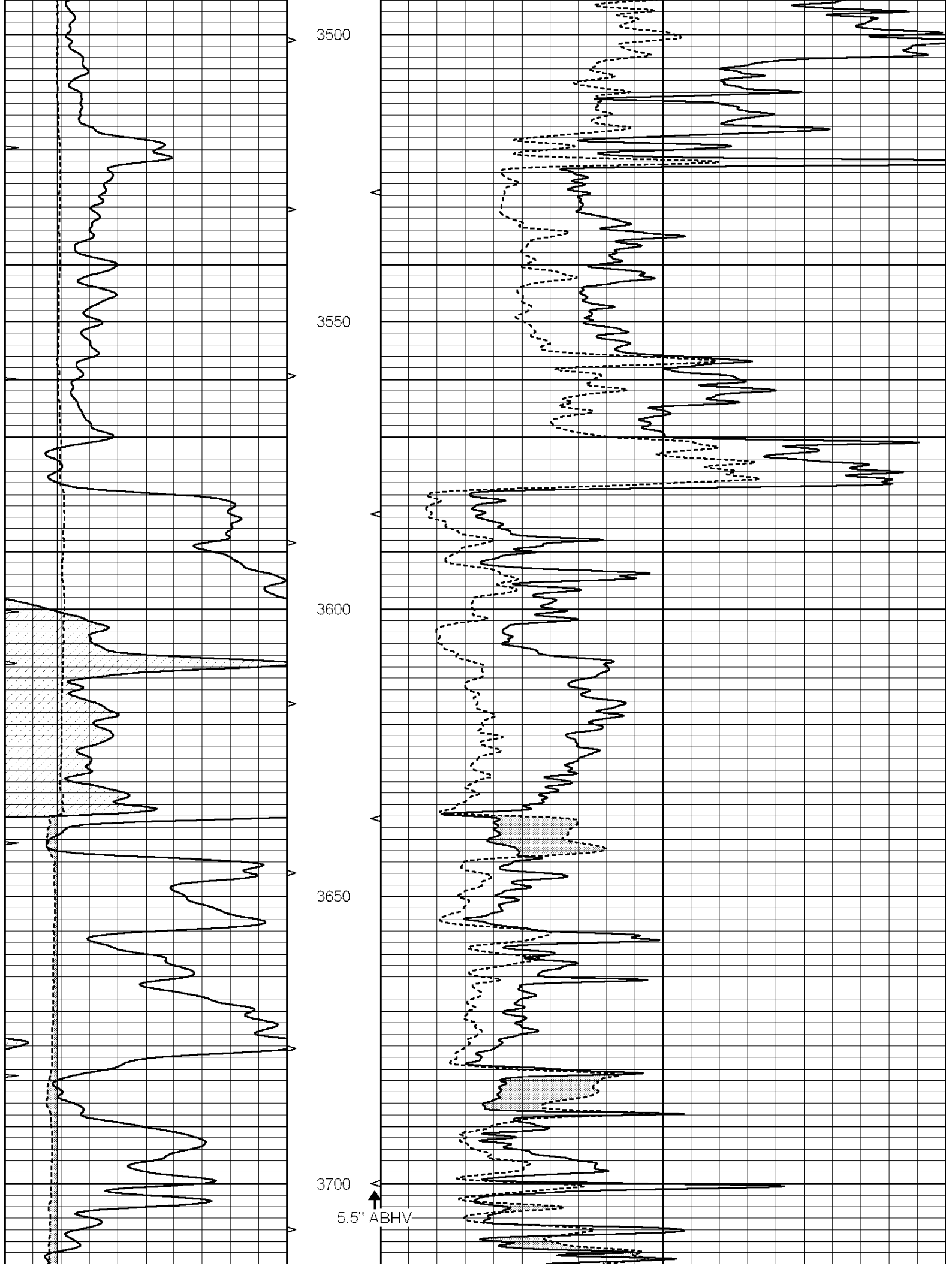
3150

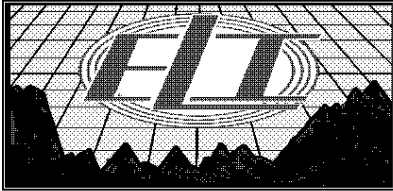
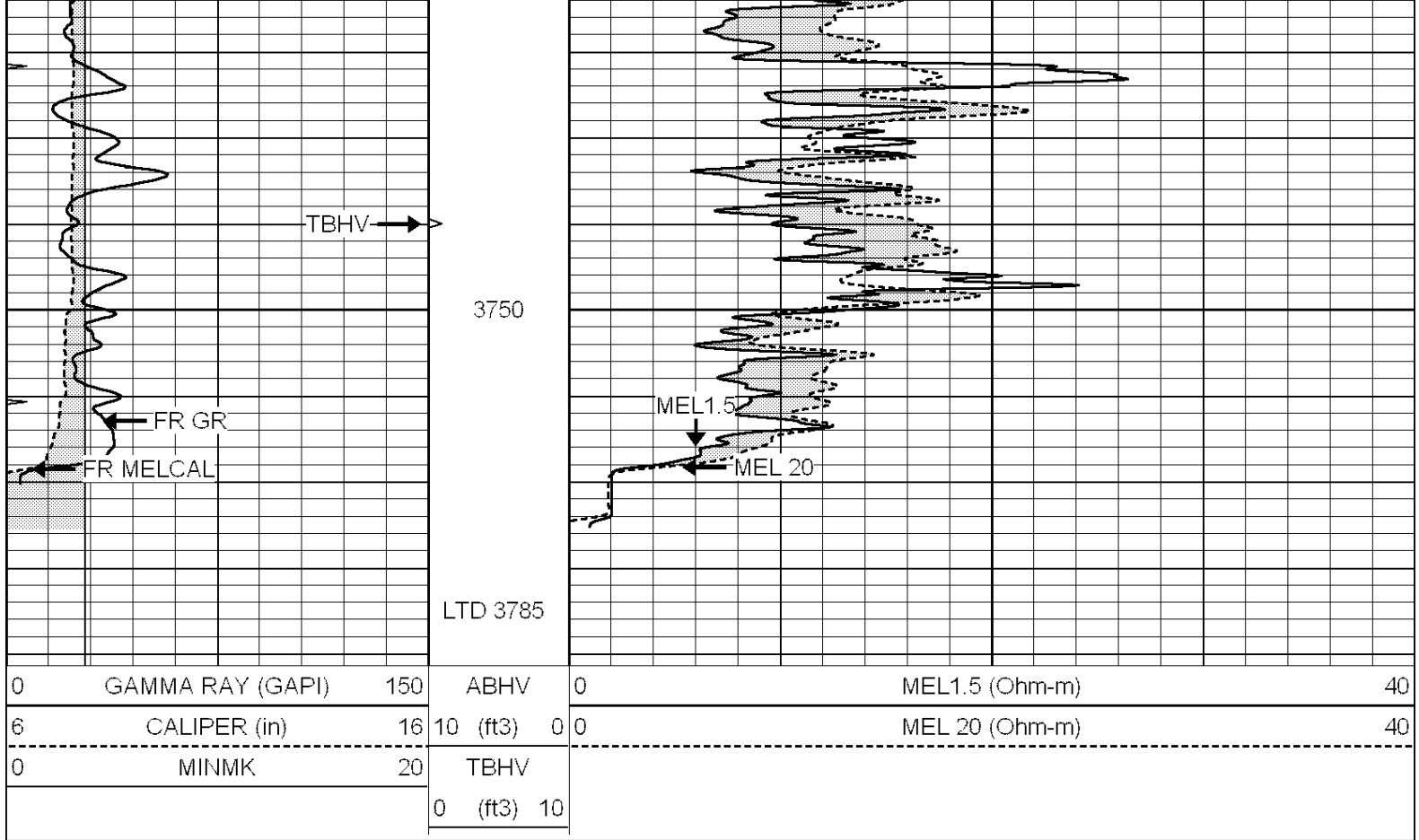
3200

3250





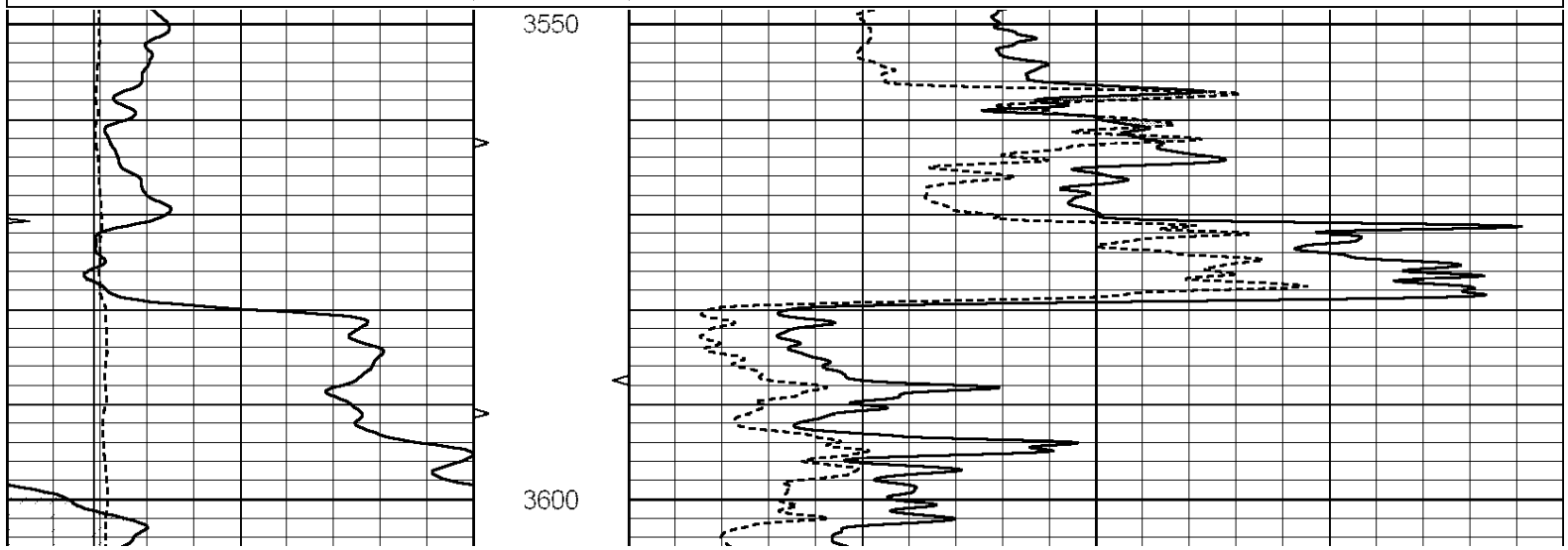


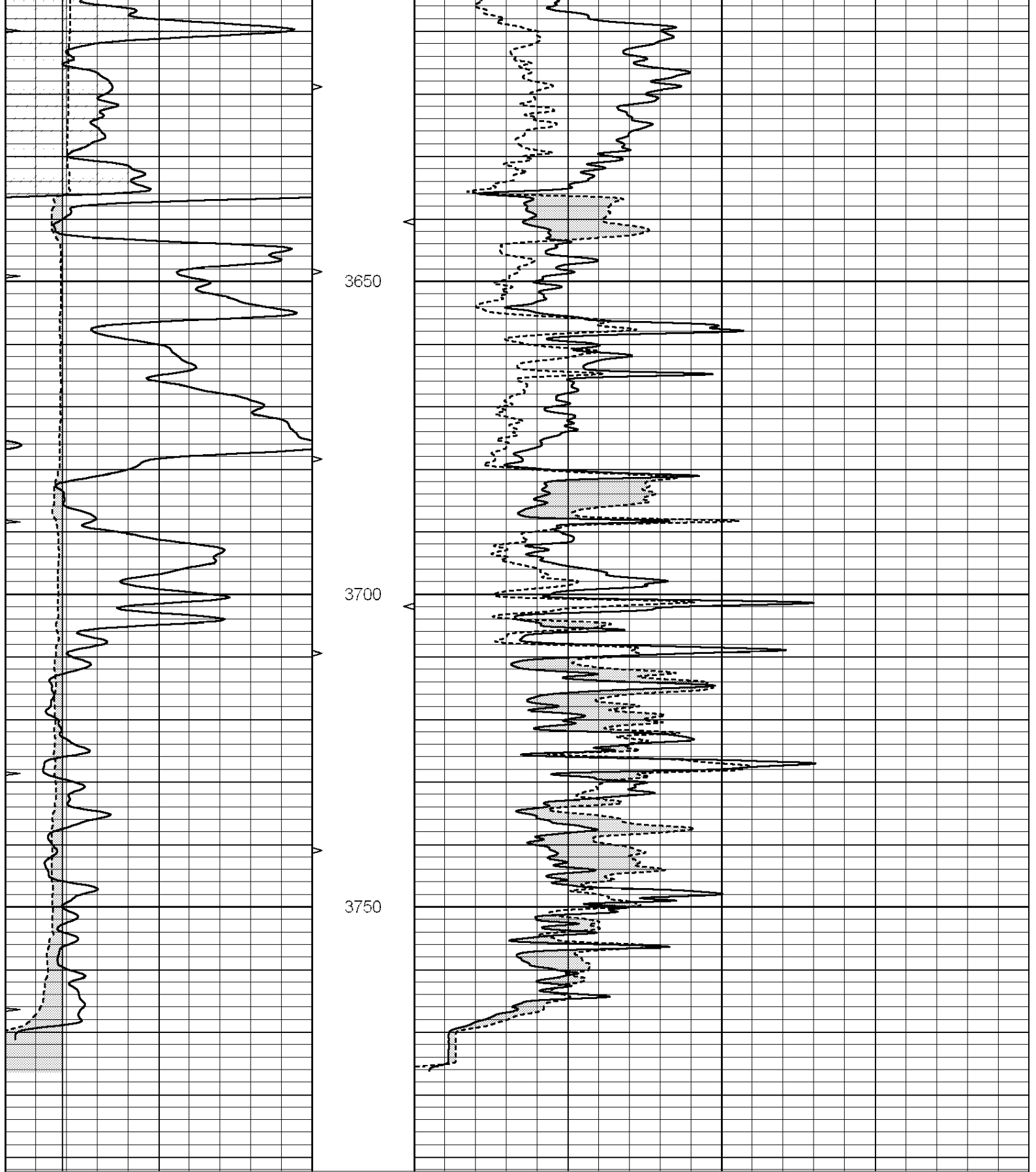


REPEAT SECTION

Database File: 4537pe.db
 Dataset Pathname: pass5.6
 Presentation Format: micro
 Dataset Creation: Tue Mar 17 11:00:02 2020 by Calc SOC 120430
 Charted by: Depth in Feet scaled 1:240

0	GAMMA RAY (GAPI)	150	ABHV	0	MEL1.5 (Ohm-m)	40
6	CALIPER (in)	16	10 (ft3)	0	MEL 20 (Ohm-m)	40
0	MINMK	20	TBHV			
			0 (ft3)	10		





0	GAMMA RAY (GAPI)	150	ABHV	0	MEL1.5 (Ohm-m)	40
6	CALIPER (in)	16	10 (ft3)	0 0	MEL 20 (Ohm-m)	40
0	MINMK	20	TBHV			
			0 (ft3)	10		

Calibration Report

Dataset Pathname: pass6.3
Dataset Creation: Tue Mar 17 11:12:53 2020

MICRO Calibration Report

Serial Number: 070910
Tool Model: ProbeN
Performed: Tue Mar 17 09:41:22 2020

Caliper Calibration: Gain=6.250 Offset=-0.750
References Low Cal High Cal
8.000 18.000
Readings 1.400 3.000

1.5" Calibration: Gain=22.000 Offset=1.000
References Low Cal High Cal
0.000 20.000
Readings 0.000 1.216

2" Calibration: Gain=48.000 Offset=-0.800
References Low Cal High Cal
0.000 20.000
Readings 0.002 1.053

Gamma Ray Calibration Report

Serial Number: 070559
Tool Model: OPEN_GR
Performed: Wed Feb 19 01:01:50 2020

Calibrator Value: 1.0 GAPI
Background Reading: 0.0 cps
Calibrator Reading: 1.0 cps
Sensitivity: 0.2800 GAPI/cps