



**SONIC
LOG**

Company WOOLSEY OPERATING CO. LLC.
 Well PARKER #1
 Field WILDCAT
 County SUMNER
 State KANSAS

Company WOOLSEY OPERATING COMPANY, LLC.
 Well PARKER #1
 Field WILDCAT
 County SUMNER State KANSAS

Location: API # : 15-191-22816-0000
 2310' FNL & 1890' FEL
 W/2 - SE - SW - NE
 SEC 26 TWP 30S RGE 1E
 Permanent Datum GROUND LEVEL Elevation 1214
 Log Measured From KELLY BUSHING 5' A.G.L.
 Drilling Measured From KELLY BUSHING
 Other Services
 CDL/CNL/PE
 DIL/MEL
 Elevation
 K.B. 1219
 D.F. 1217
 G.L. 1214

Date	3/17/20		
Run Number	TWO		
Depth Driller	3785		
Depth Logger	3785		
Bottom Logged Interval	3777		
Top Log Interval	300		
Casing Driller	8 5/8" @ 310'		13 3/8" @ 76'
Casing Logger	308		
Bit Size	7 7/8"		
Type Fluid in Hole	CHEMICAL MUD		CHLORIDES 3,000 PPM
Density / Viscosity	9.3/52		
pH / Fluid Loss	10.0/7.2		
Source of Sample	FLOWLINE		
Rim @ Meas. Temp	.770 @ 82F		
Rmf @ Meas. Temp	.578 @ 82F		
Rmc @ Meas. Temp	.924 @ 82F		
Source of Rmf / Rmc	MEASUREMENT		
Rim @ BHT	.554 @ 114F		
Time Circulation Stopped	4 HOURS		
Time Logger on Bottom	10:00 A.M.		
Maximum Recorded Temperature	114F		
Equipment Number	922339		
Location	HAYS, KANSAS		
Recorded By	JEFF LUEBBERS		
Witnessed By	BLAKE MILLER		

<<< Fold Here >>>

All interpretations are opinions based on inferences from electrical or other measurements and we cannot and do not guarantee the accuracy or correctness of any interpretation, and we shall not, except in the case of gross or willful negligence on our part, be liable or responsible for any loss, costs, damages, or expenses incurred or sustained by anyone resulting from any interpretation made by any of our officers, agents or employees. These interpretations are also subject to our general terms and conditions set out in our current Price Schedule.

Comments

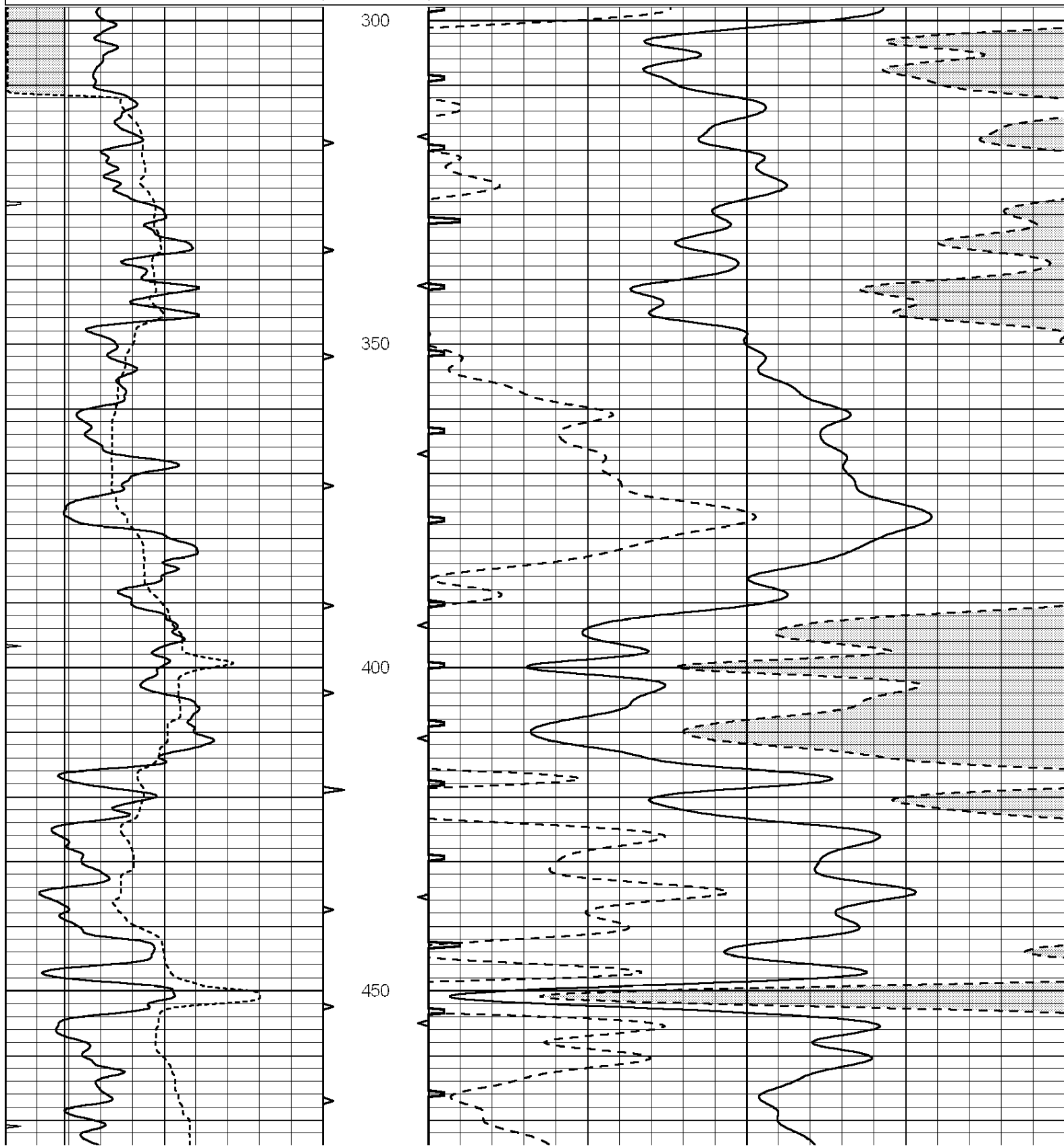
THANK YOU FOR USING E.L.I. WIRELINE SERVICES
 (785)628-6395
 DIRECTIONS
 BELLE PLAIN, KS., 2N., 1/2W., S. INTO

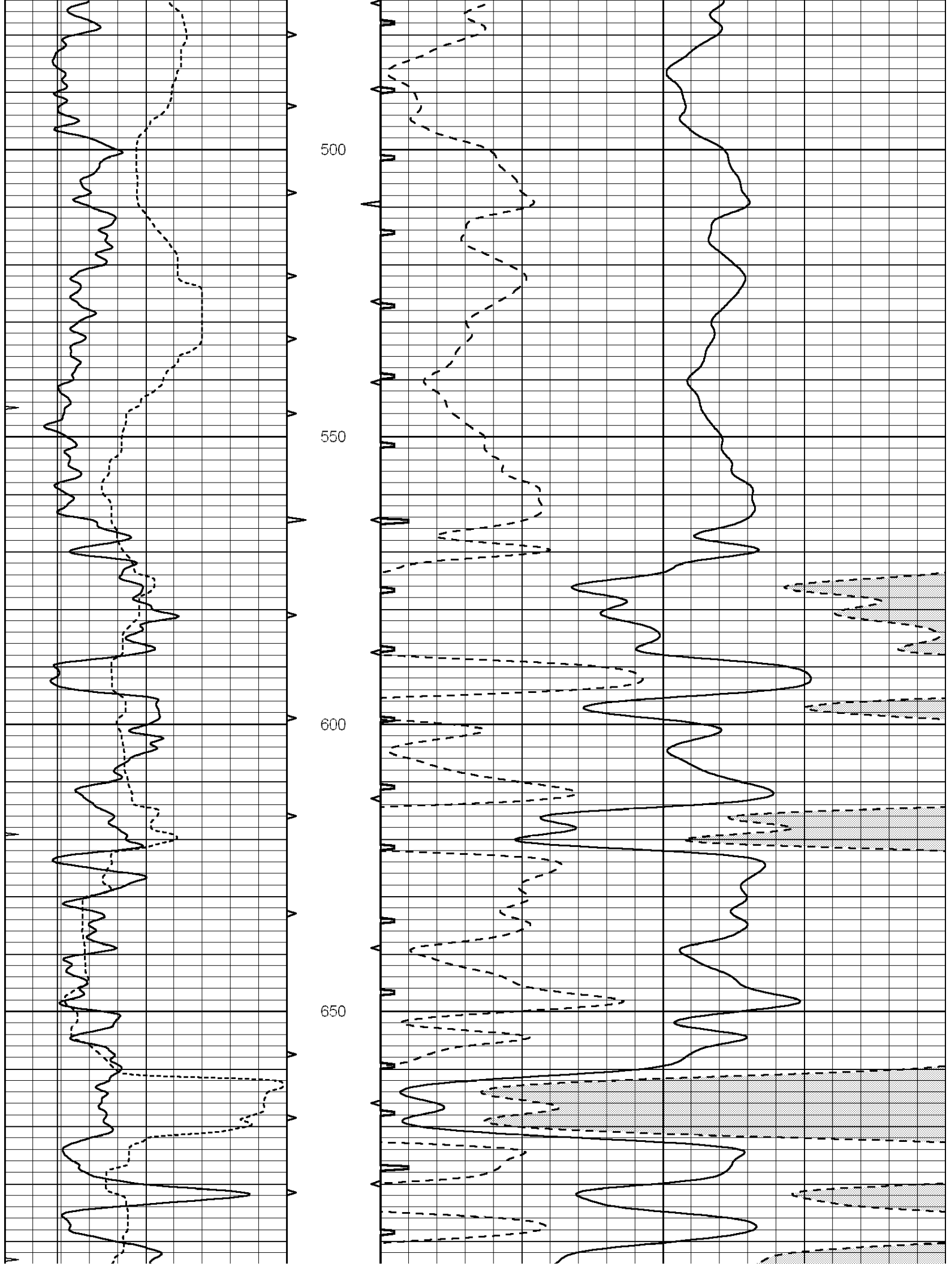


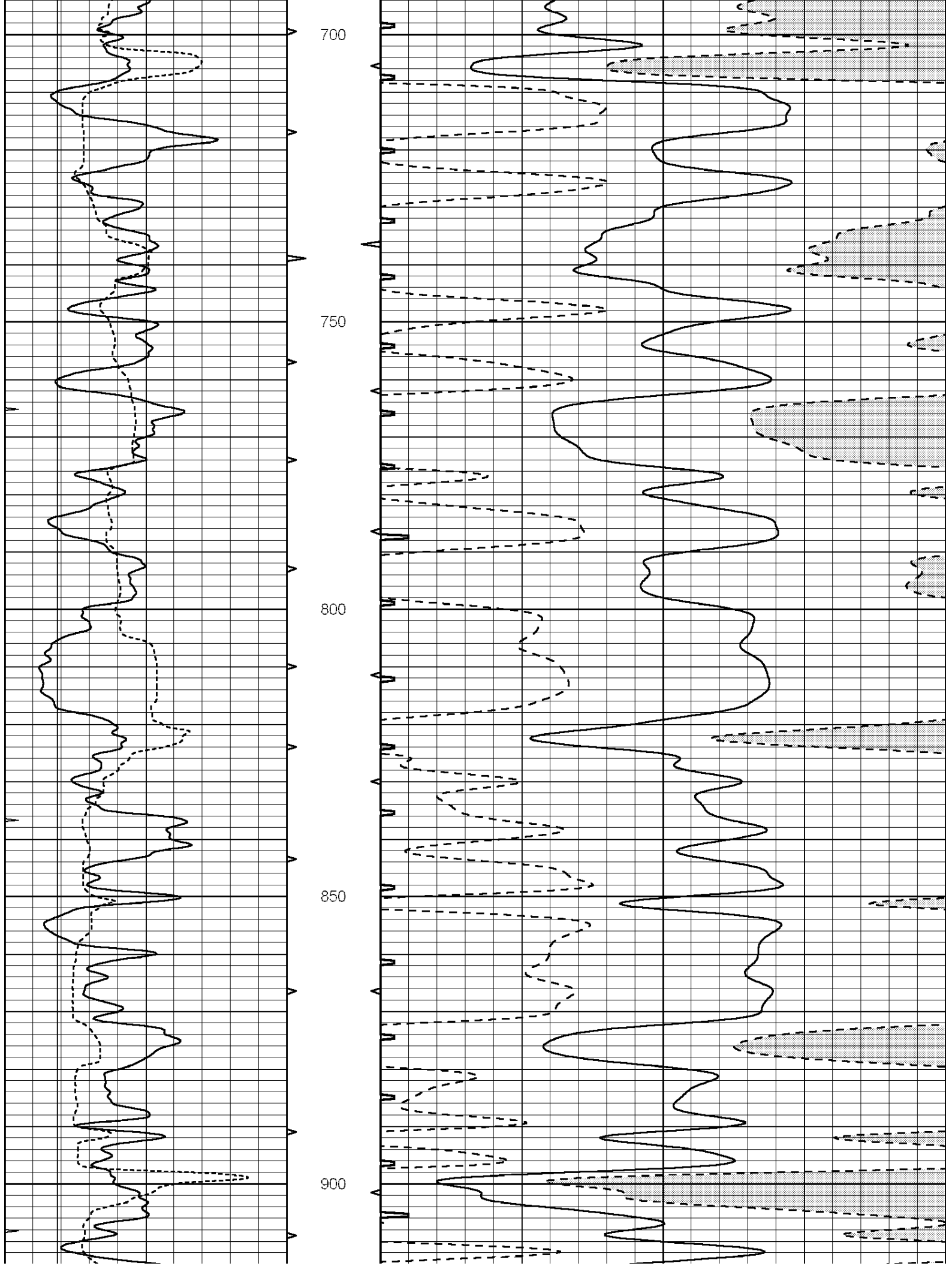
MAIN SECTION

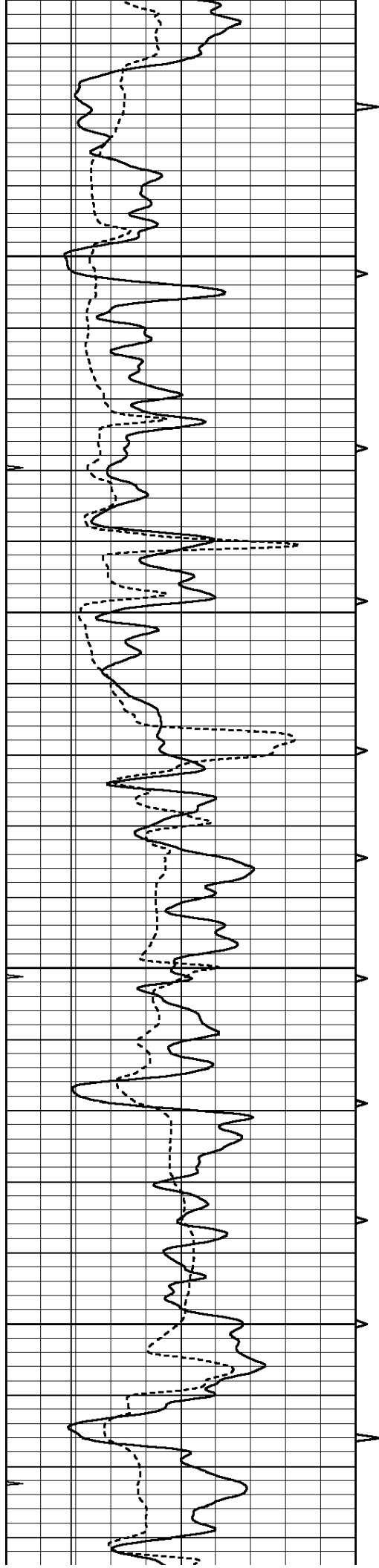
Database File: 4537pe.db
 Dataset Pathname: pass6.4
 Presentation Format: slt
 Dataset Creation: Tue Mar 17 11:31:39 2020 by Calc SOC 120430
 Charted by: Depth in Feet scaled 1:240

0	GAMMA RAY (GAPI)	150	ABHV	140	DELTA TIME (usec/ft)	40	
6	CALIPER (in)	16	10 (ft3)	0	30	SONIC POROSITY (pu)	-10
0	MINMK	20	TBHV	0	ITT (msec)	20	
			0 (ft3)	10			







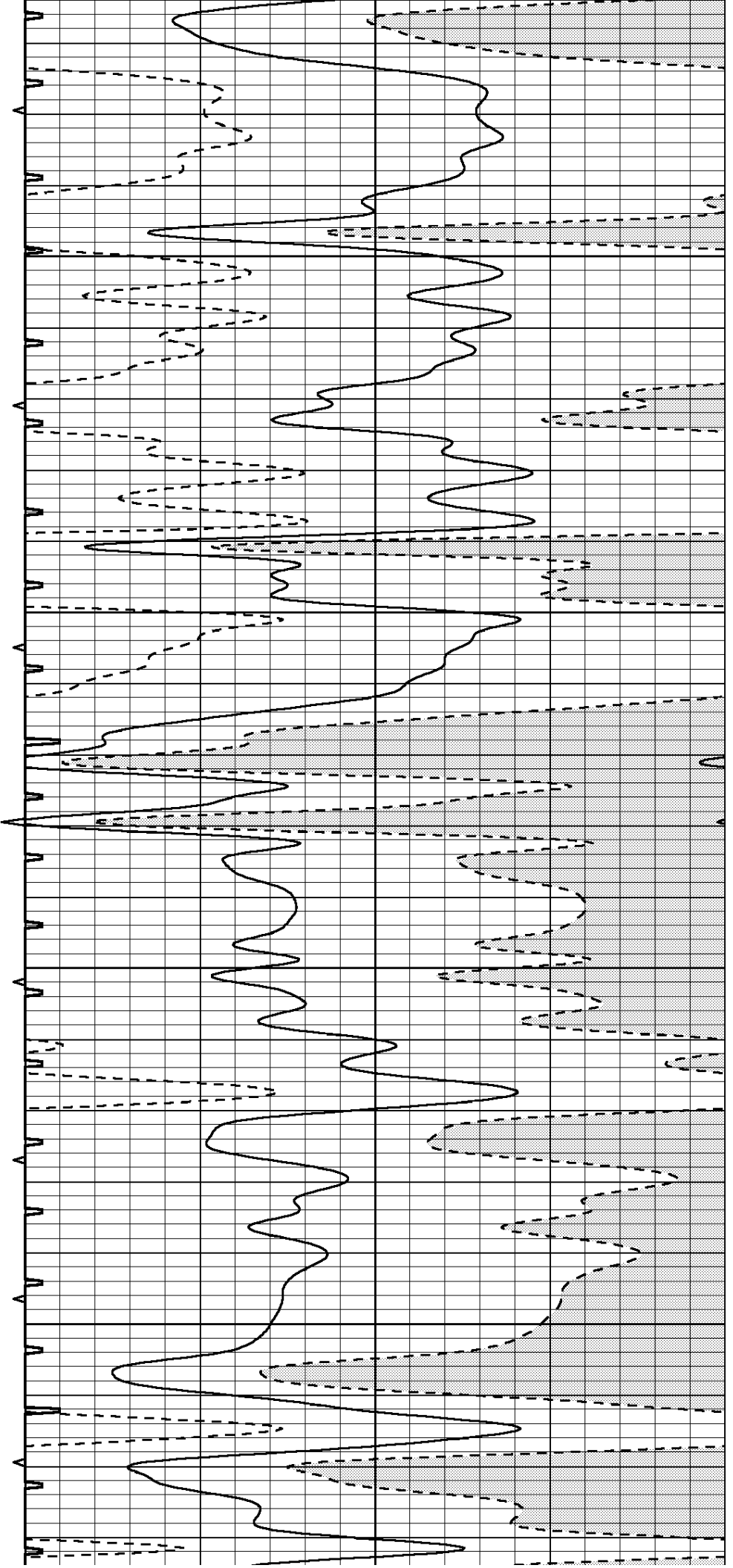


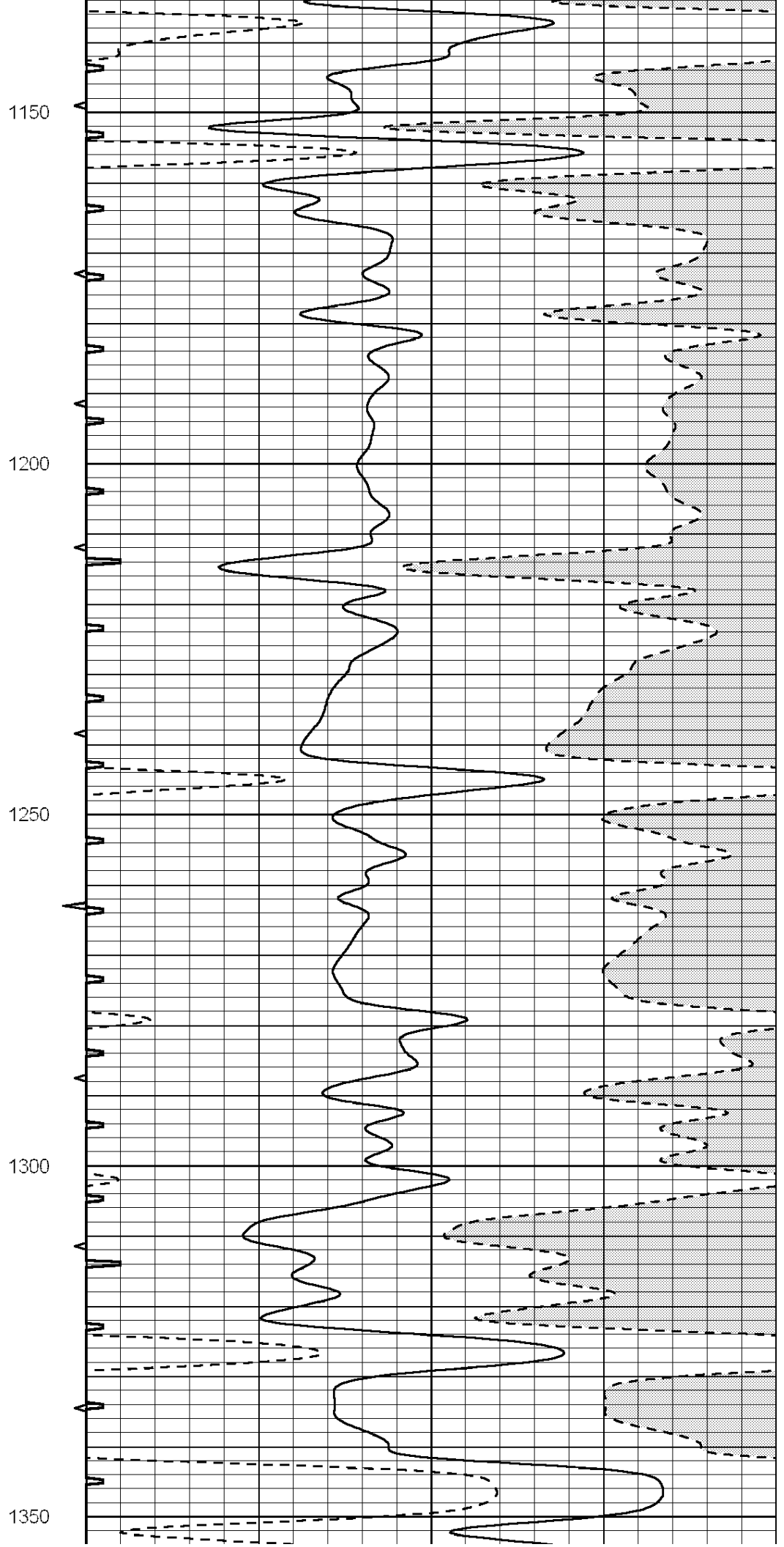
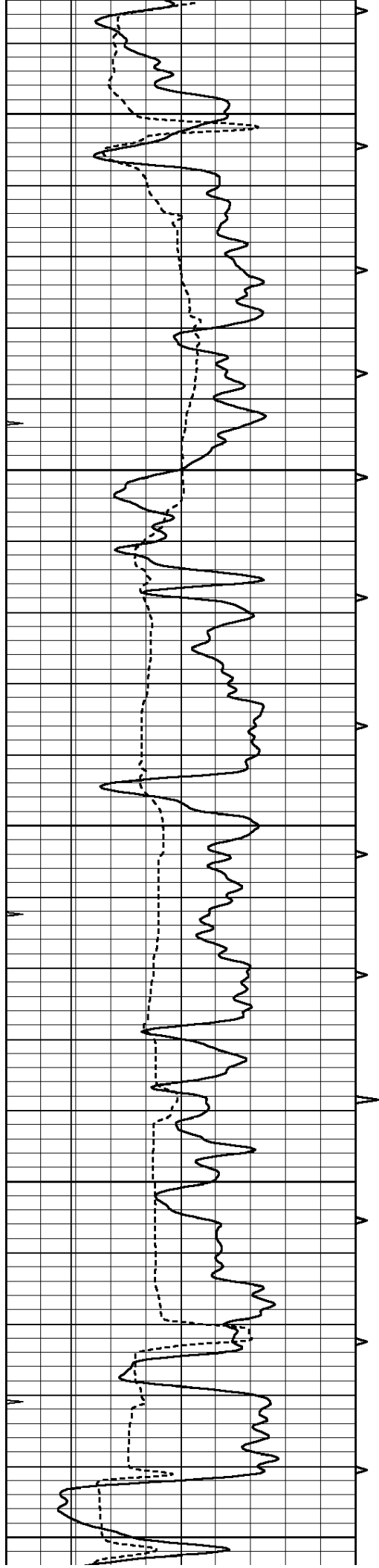
950

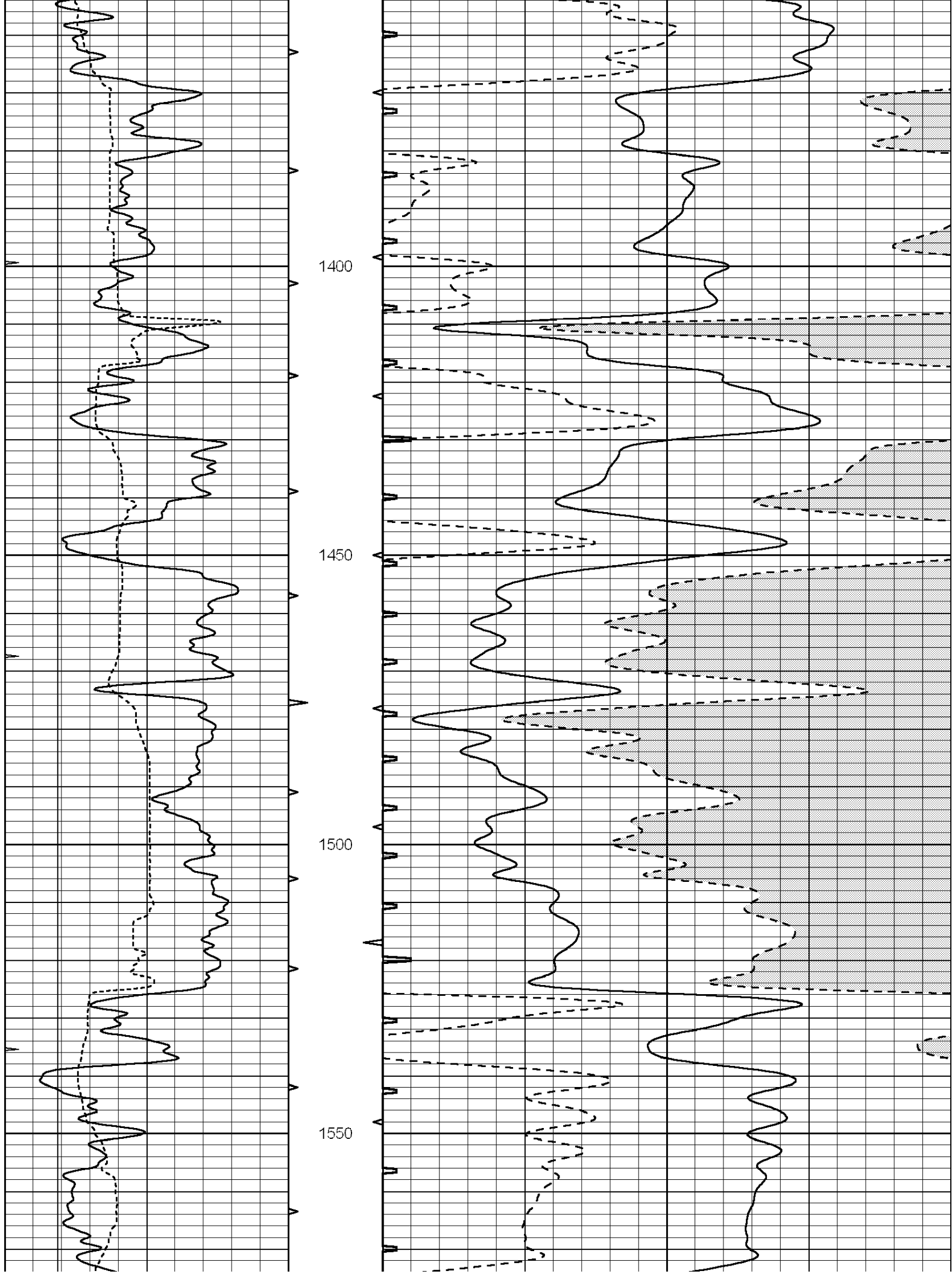
1000

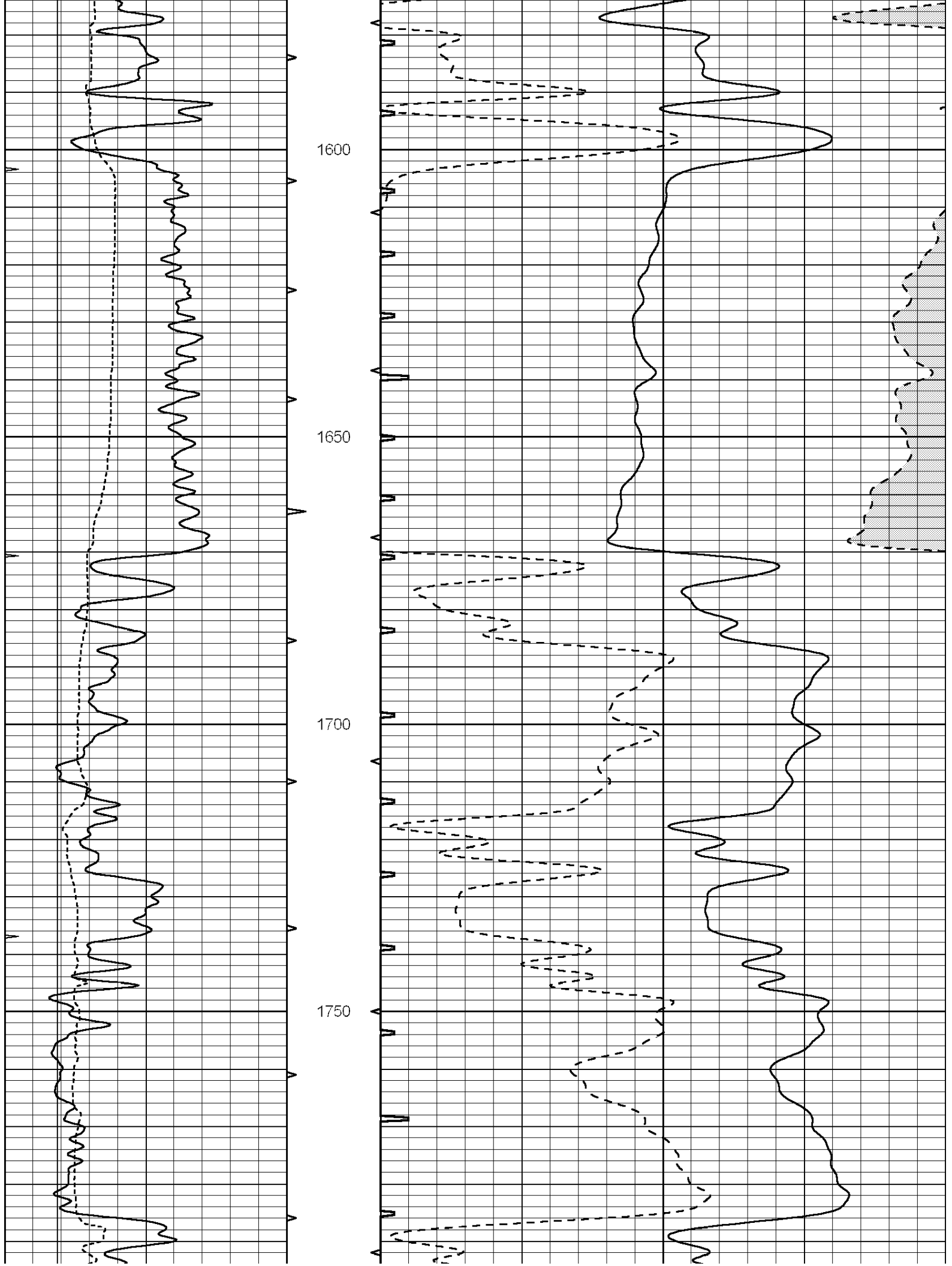
1050

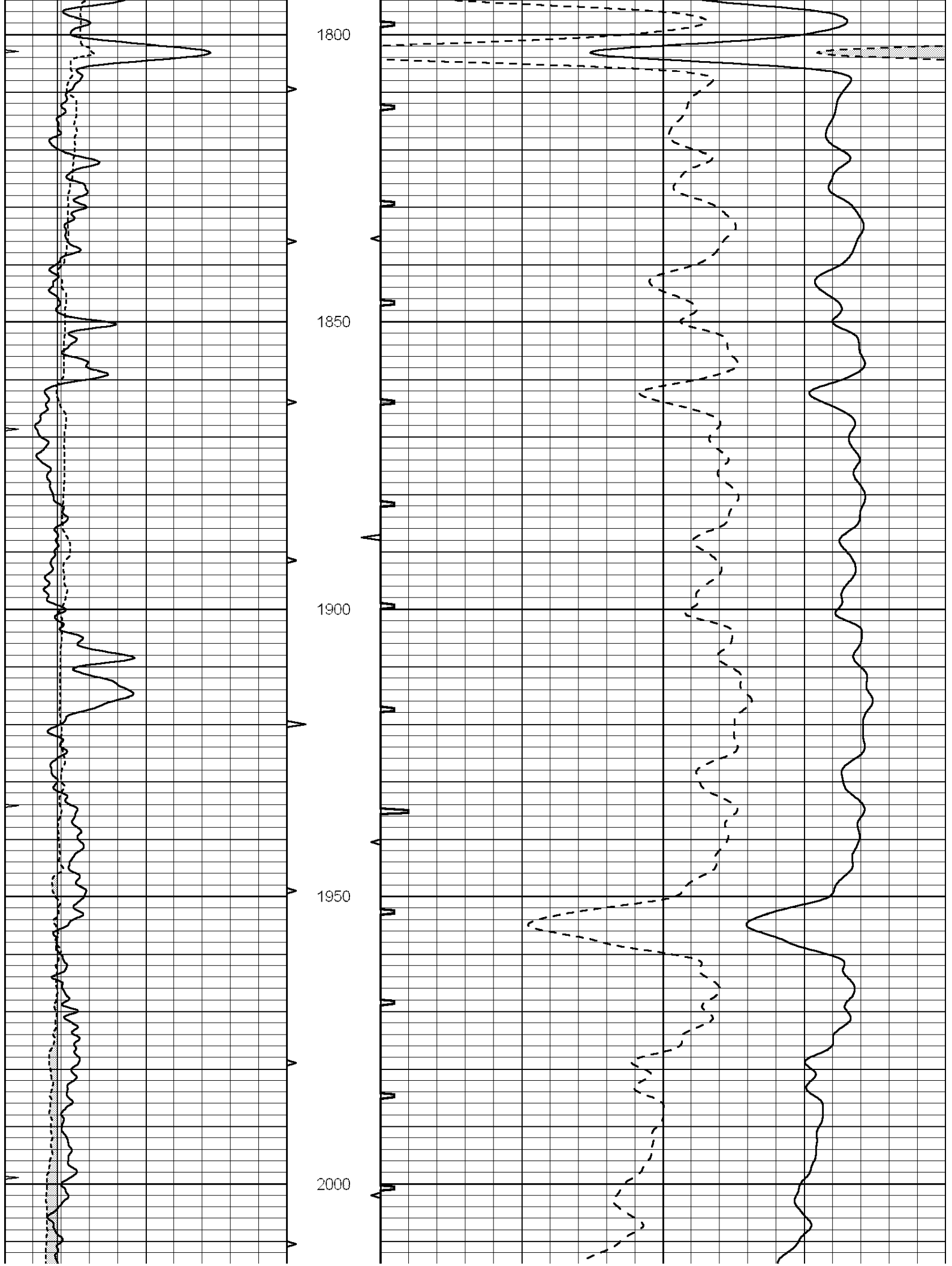
1100

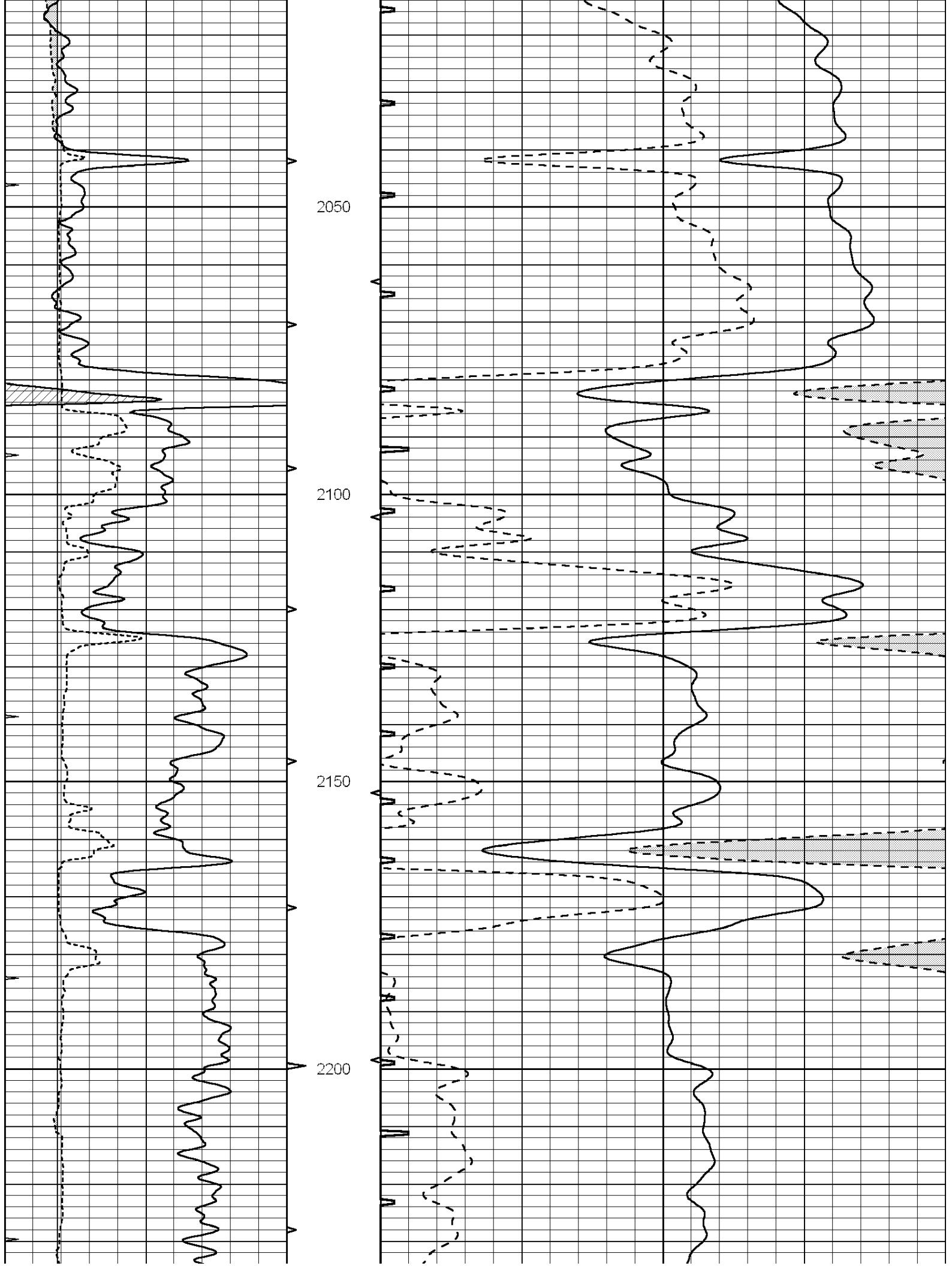


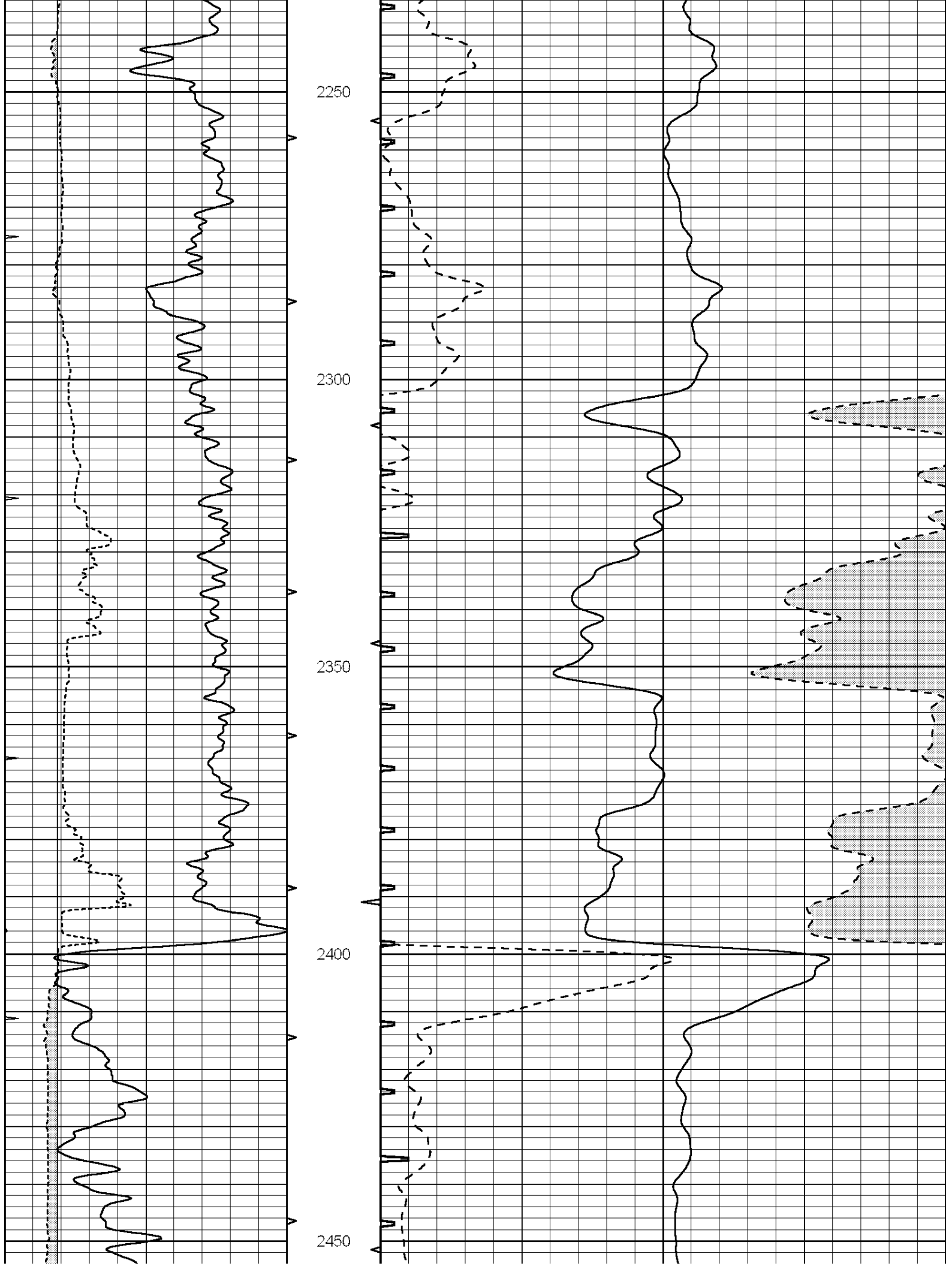


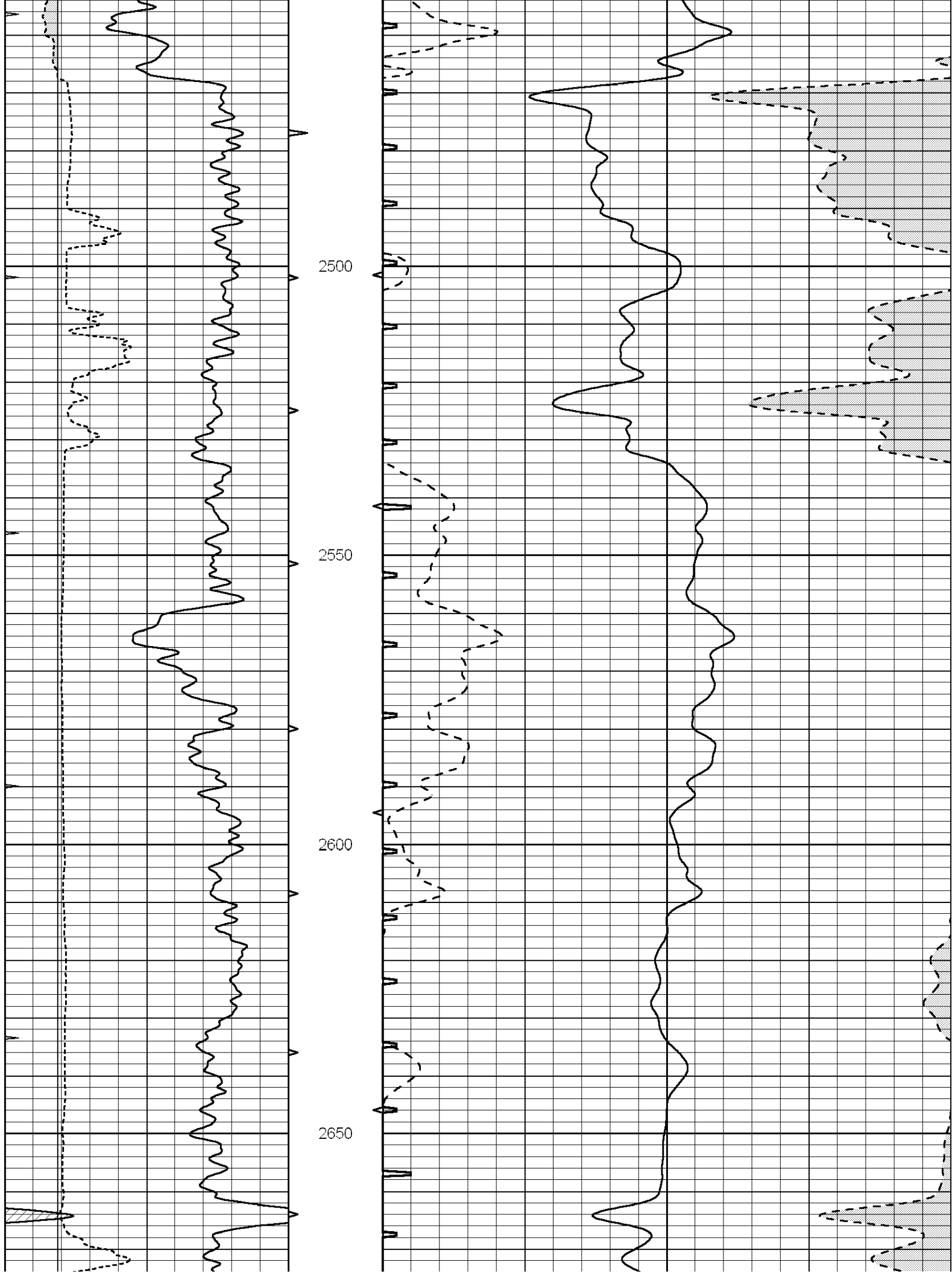


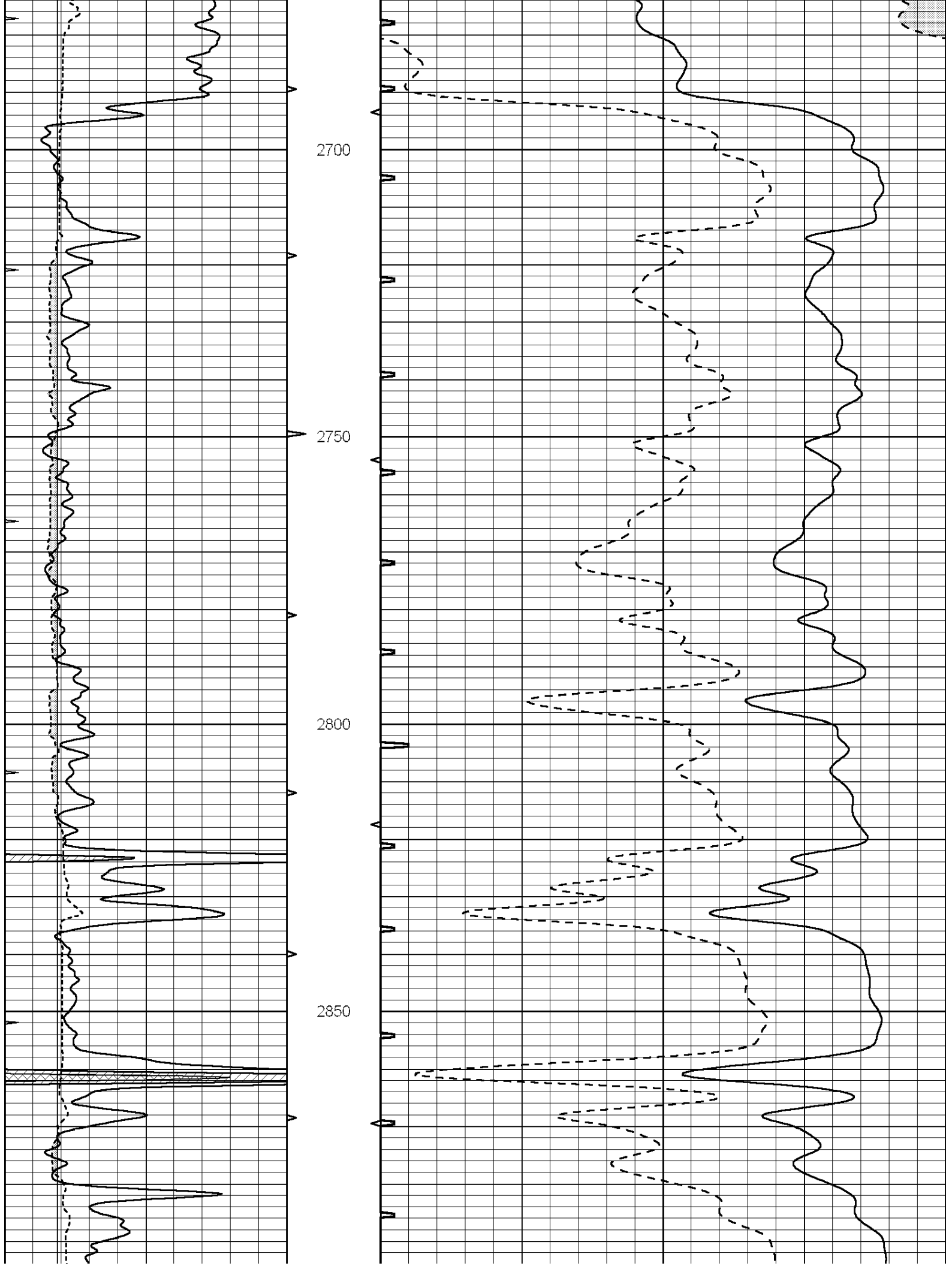


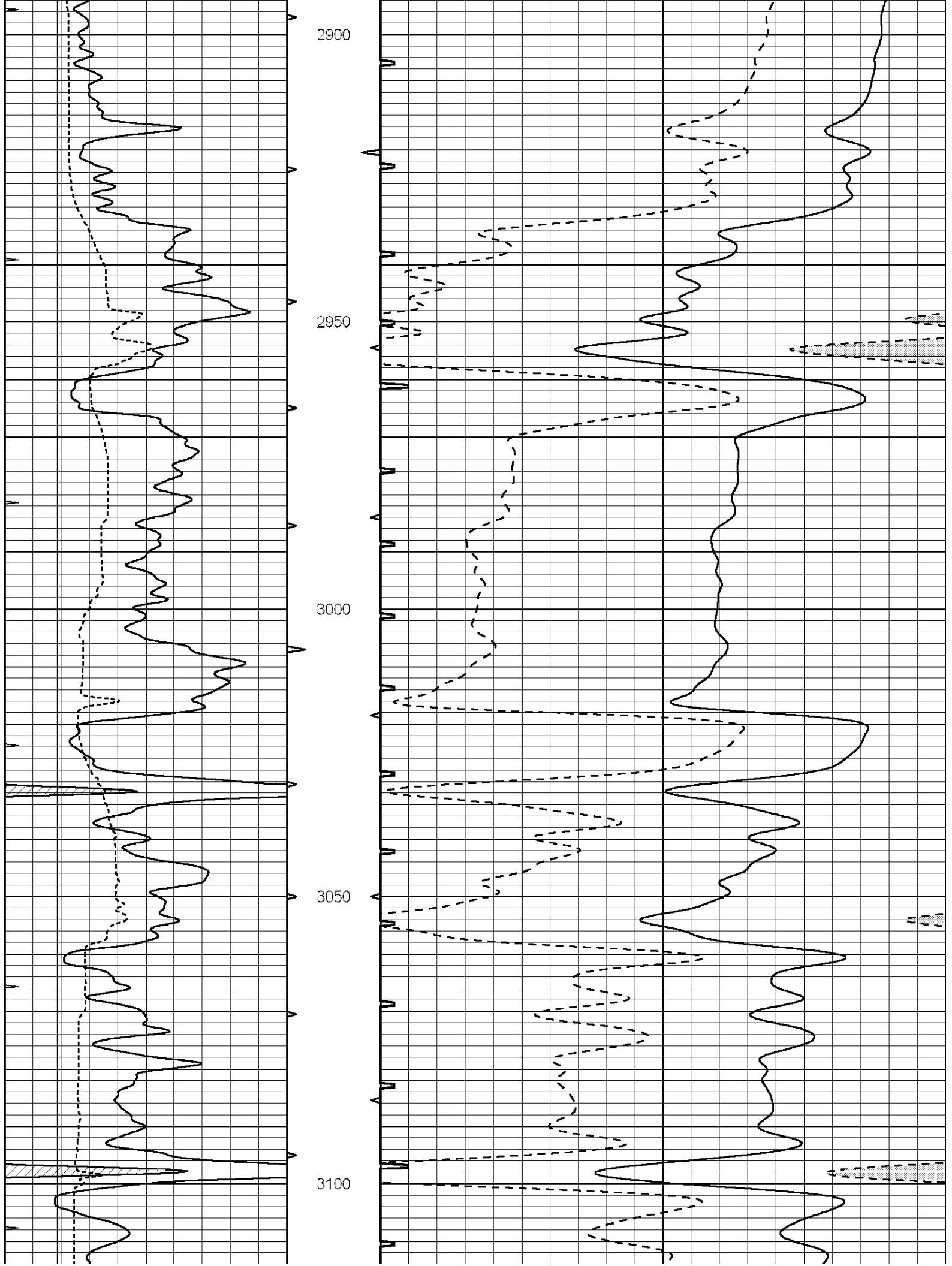


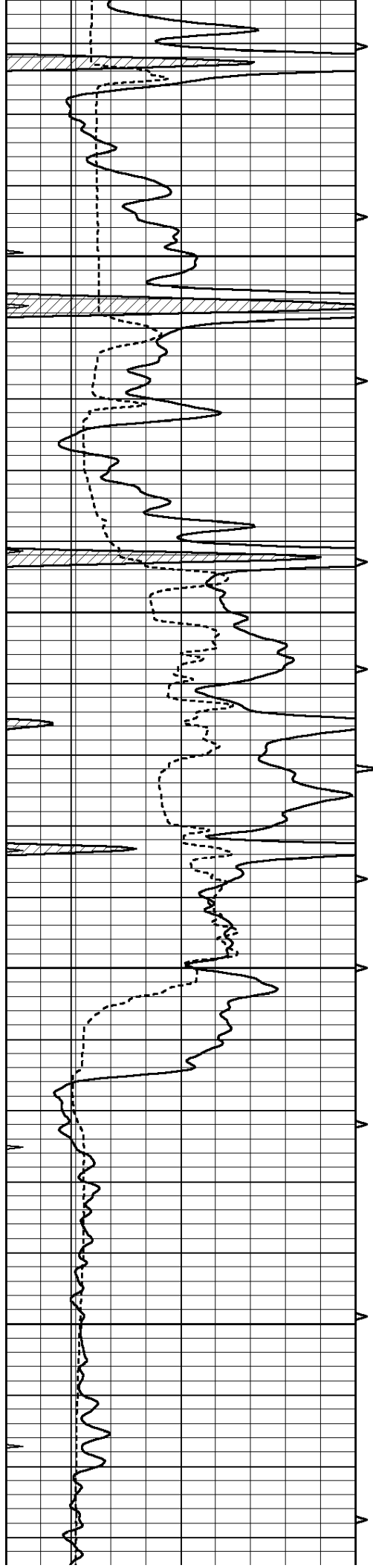










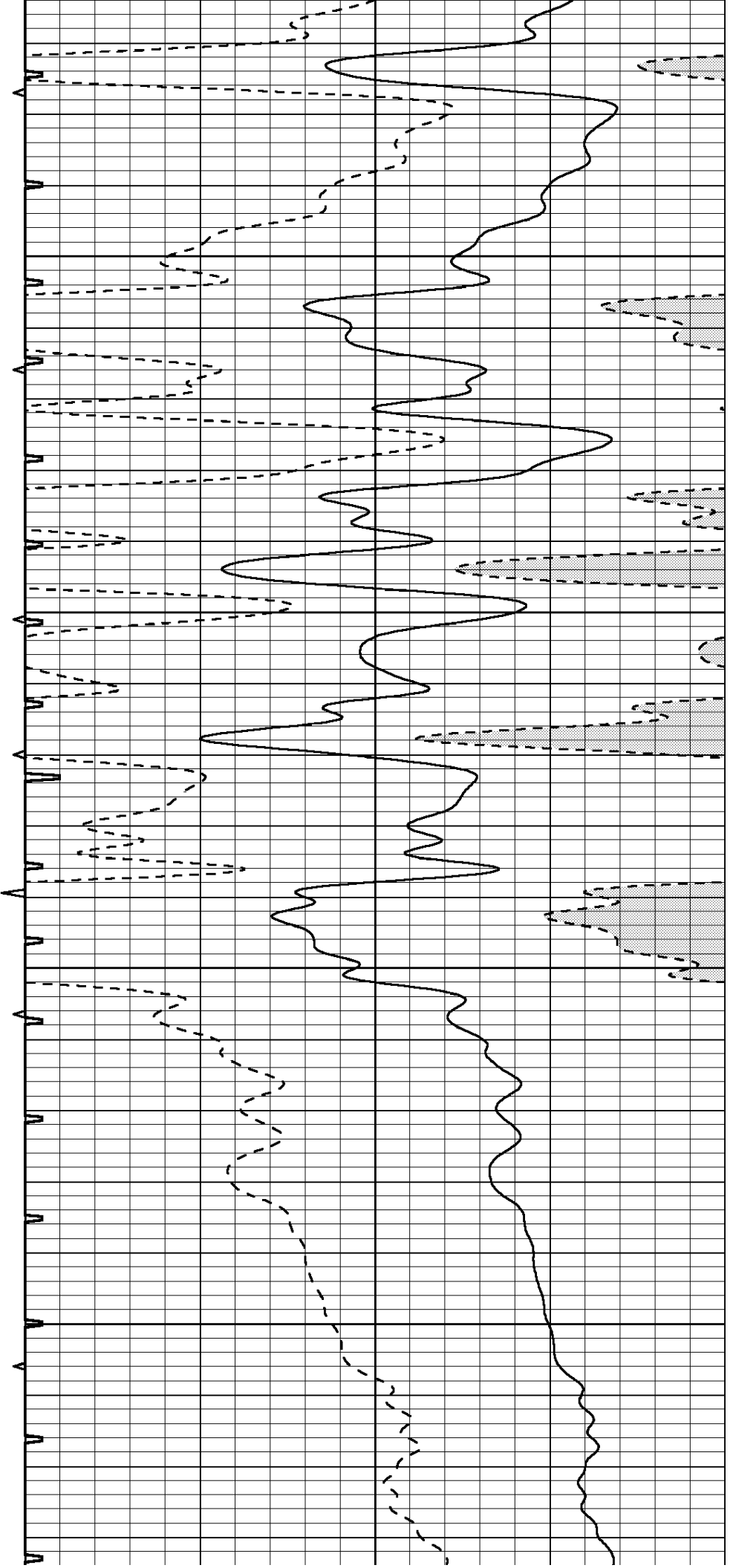


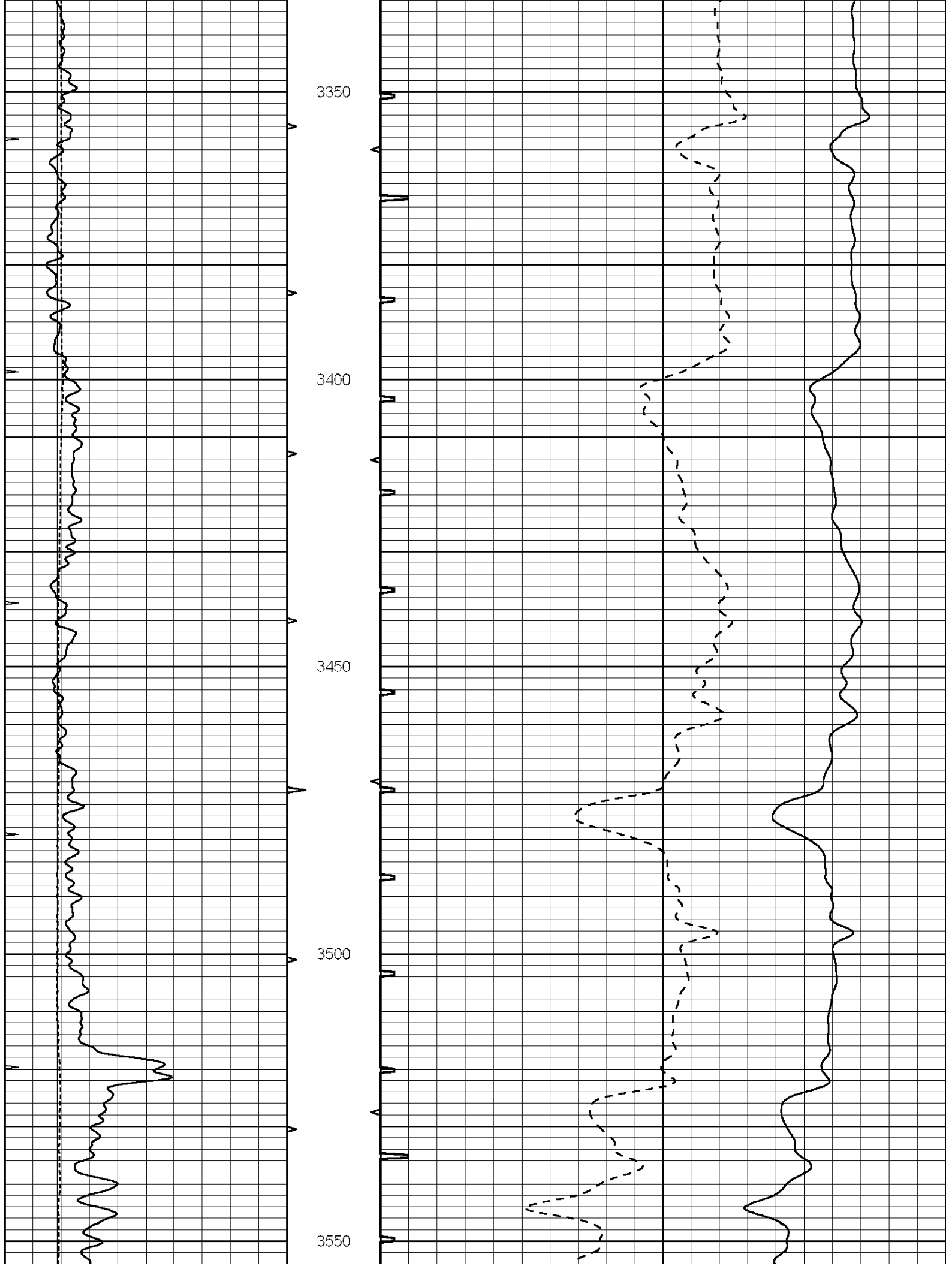
3150

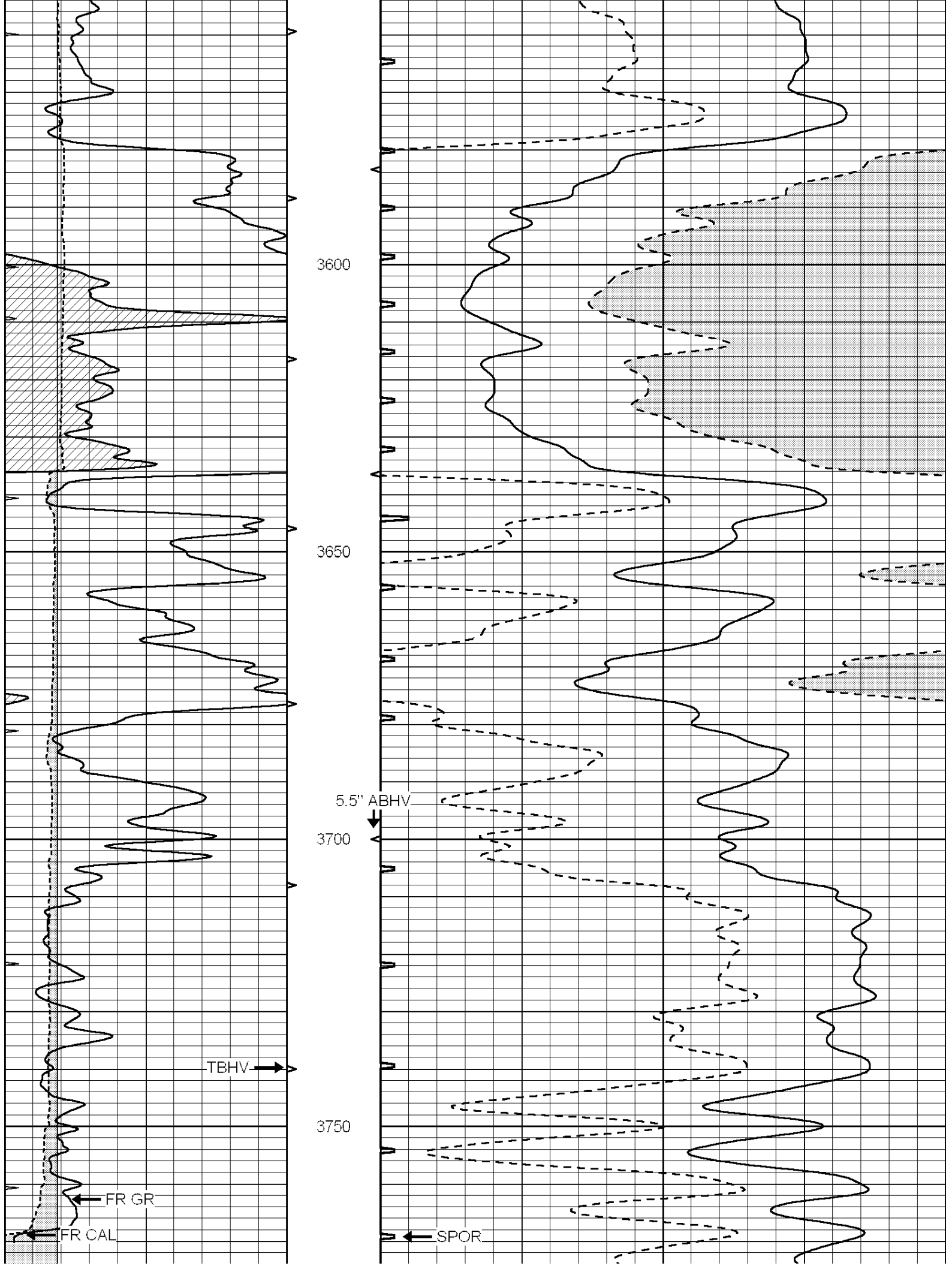
3200

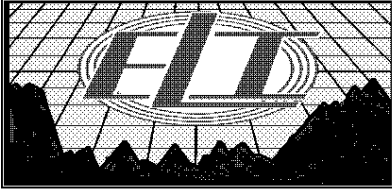
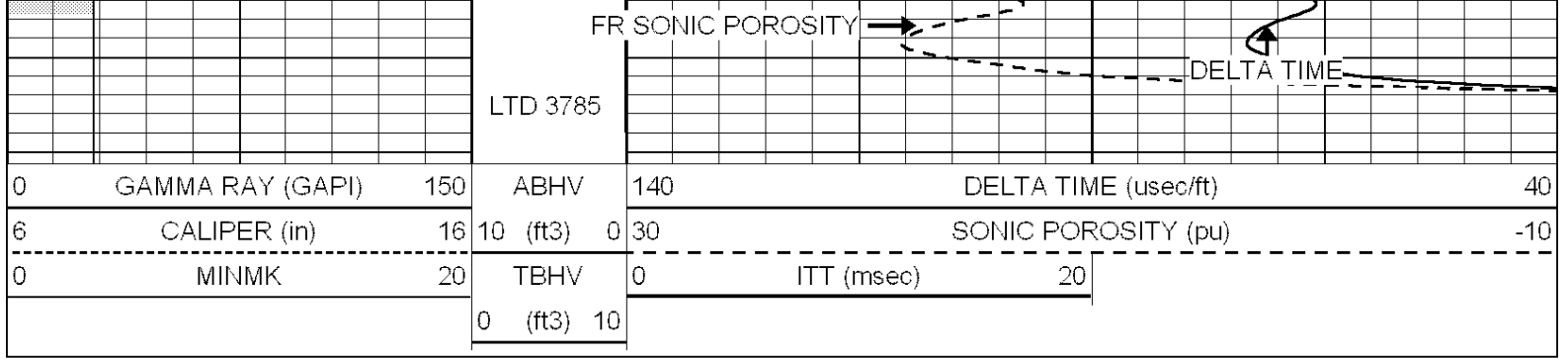
3250

3300





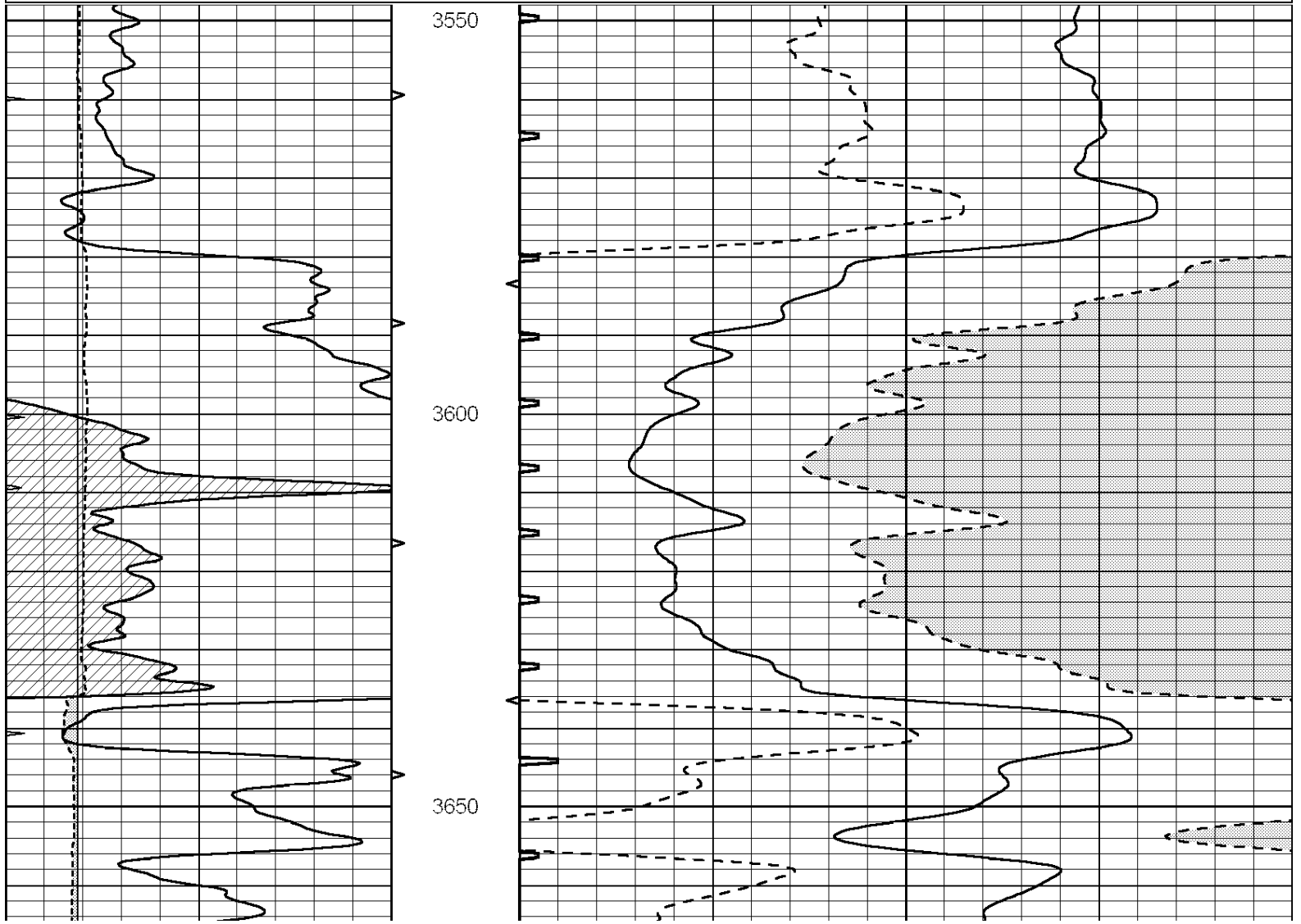


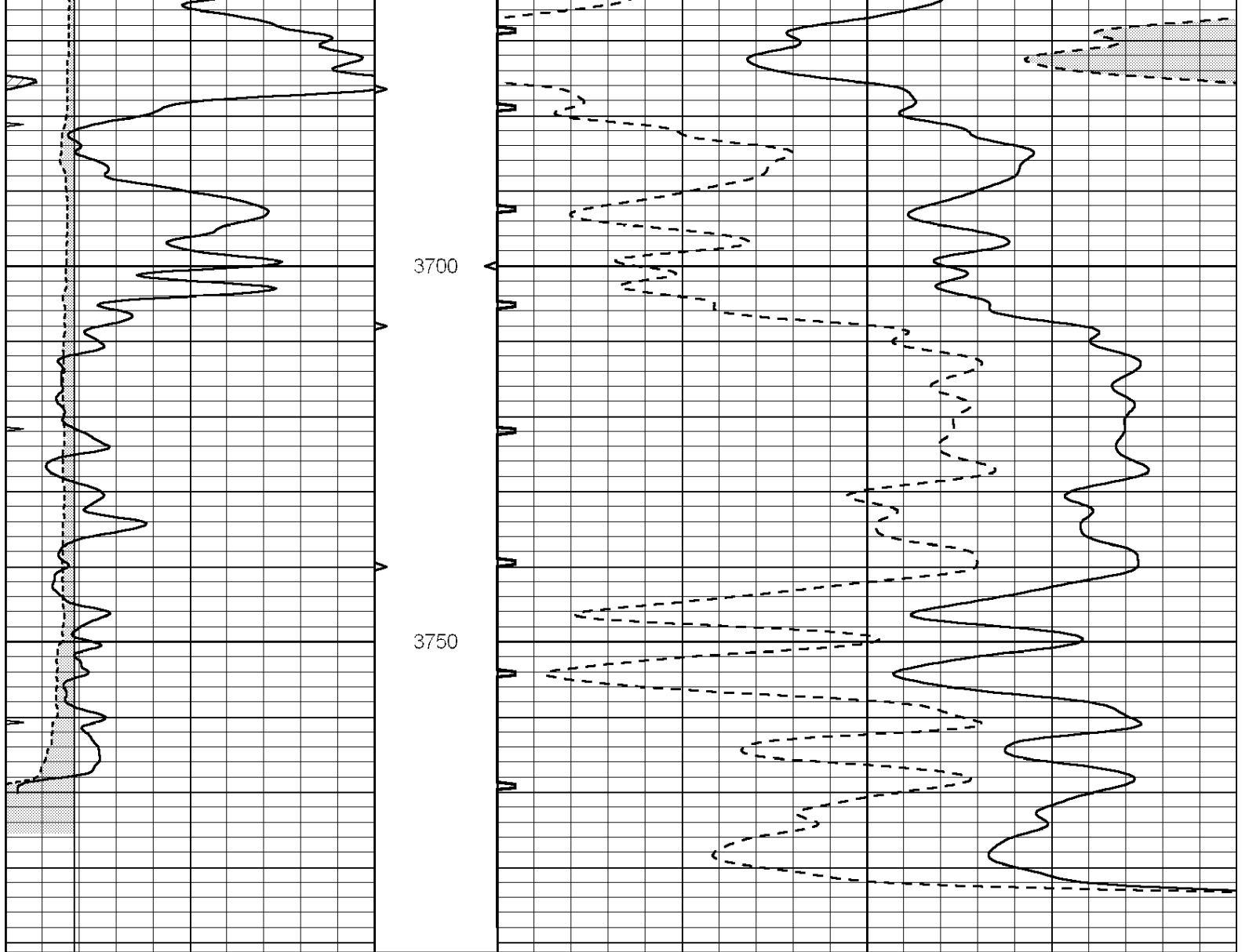


REPEAT SECTION

Database File: 4537pe.db
 Dataset Pathname: pass5.7
 Presentation Format: slt
 Dataset Creation: Tue Mar 17 11:38:48 2020 by Calc SOC 120430
 Charted by: Depth in Feet scaled 1:240

0	GAMMA RAY (GAPI)	150	ABHV	140	DELTA TIME (usec/ft)	40	
6	CALIPER (in)	16	10 (ft3)	0	30	SONIC POROSITY (pu)	-10
0	MINMK	20	TBHV	0	ITT (msec)	20	
			0 (ft3)	10			





0	GAMMA RAY (GAPI)	150	ABHV	140	DELTA TIME (usec/ft)	40
6	CALIPER (in)	16	10 (ft3) 0	30	SONIC POROSITY (pu)	-10
0	MINMK	20	TBHV	0	ITT (msec)	20
			0 (ft3) 10			