

MICRO LOG



Company VAL ENERGY, INC.

Well JOHNSON #1-36

Field THOMAS State KANSAS

County THOMAS State KANSAS

Location: API #: 15-193-21075-0000

928' FSL & 982' FEL

SEC 36 TWP 7S RGE 36W

Permanent Datum GROUND LEVEL Elevation 3333

Log Measured From KELLY BUSHING 5' A.G.L

Drilling Measured From KELLY BUSHING

Other Services
CDL/CNL
DIL

Elevation

K.B. 3338
D.F. 3336
G.L. 3333

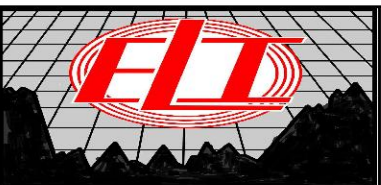
Date	4/9/20		
Run Number	TWO		
Depth Driller	4809		
Depth Logger	4803		
Bottom Logged Interval	4801		
Top Log Interval	3900		
Casing Driller	8 5/8" @ 304'		
Casing Logger	302'		
Bit Size	7 7/8		
Type Fluid in Hole	CHEMICAL MUD	CHLORIDES 7900 PPM	
Density / Viscosity	9.3/60		
pH / Fluid Loss	9.0/8.0		
Source of Sample	FLOWLINE		
Rm @ Meas. Temp	0.50 @ 97F		
Rmf @ Meas. Temp	0.37 @ 97F		
Rmc @ Meas. Temp	0.60 @ 97F		
Source of Rmf / Rmc	MEASUREMENT		
Rm @ BHT	0.39 @ 123F		
Time Circulation Stopped	2 HOURS		
Time Logger on Bottom	////		
Maximum Recorded Temperature	123F		
Equipment Number	3802		
Location	HAYS, KANSAS		
Recorded By	JASON CAPPELLUCCI		
Witnessed By	TIM PRIEST		

<<< Fold Here >>>

All interpretations are opinions based on inferences from electrical or other measurements and we cannot and do not guarantee the accuracy or correctness of any interpretation, and we shall not, except in the case of gross or willful negligence on our part, be liable or responsible for any loss, costs, damages, or expenses incurred or sustained by anyone resulting from any interpretation made by any of our officers, agents or employees. These interpretations are also subject to our general terms and conditions set out in our current Price Schedule.

Comments

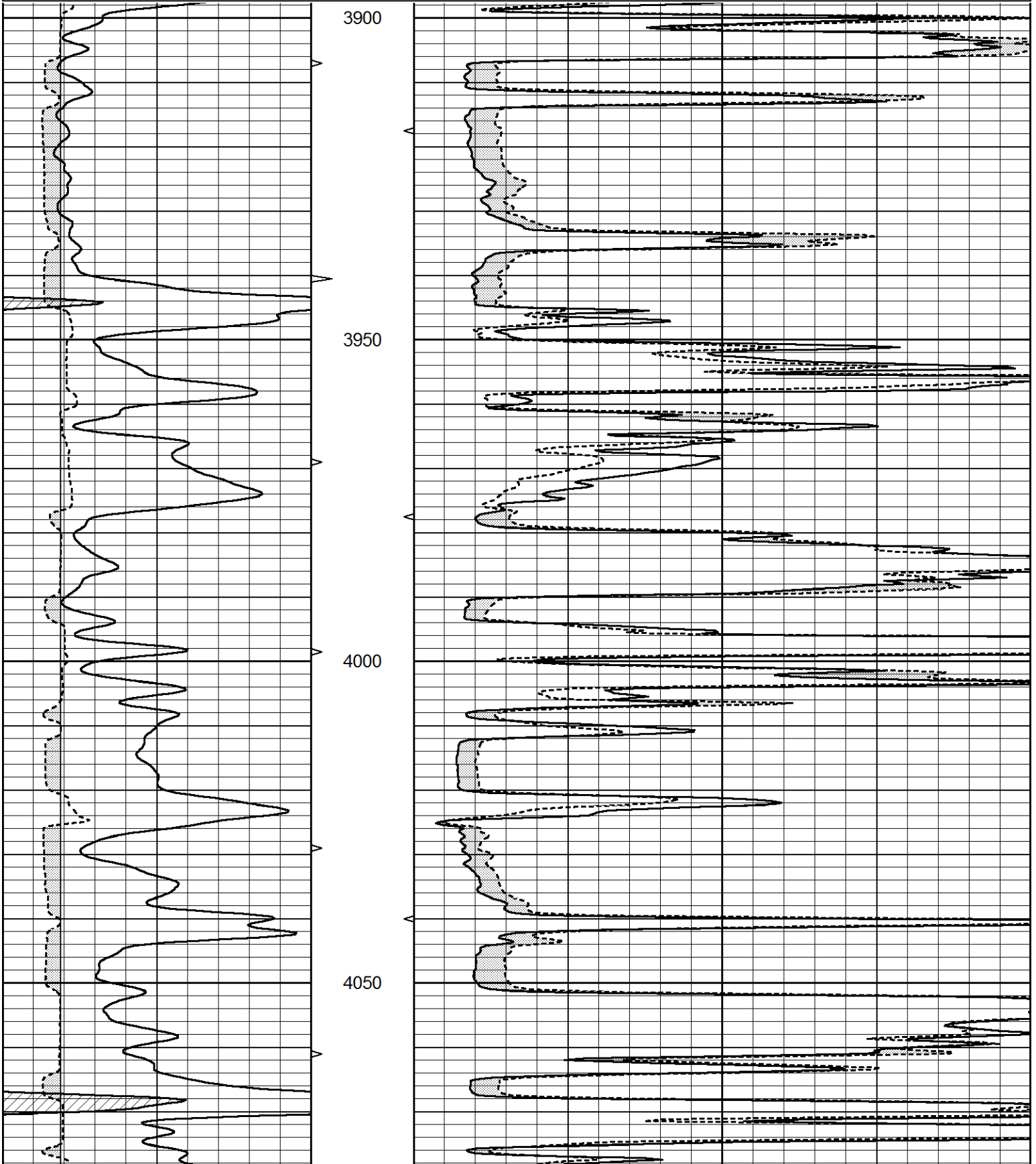
THANK YOU FOR USING ELI WIRELINE SERVICES, HAYS, KS. (785) 628-6395
 DIRECTIONS
 LEVANT, KS. - 2 WEST ON RD. R - 1 NORTH ON RD. 9 1 WEST - 1/4 NORTH - WEST INTO

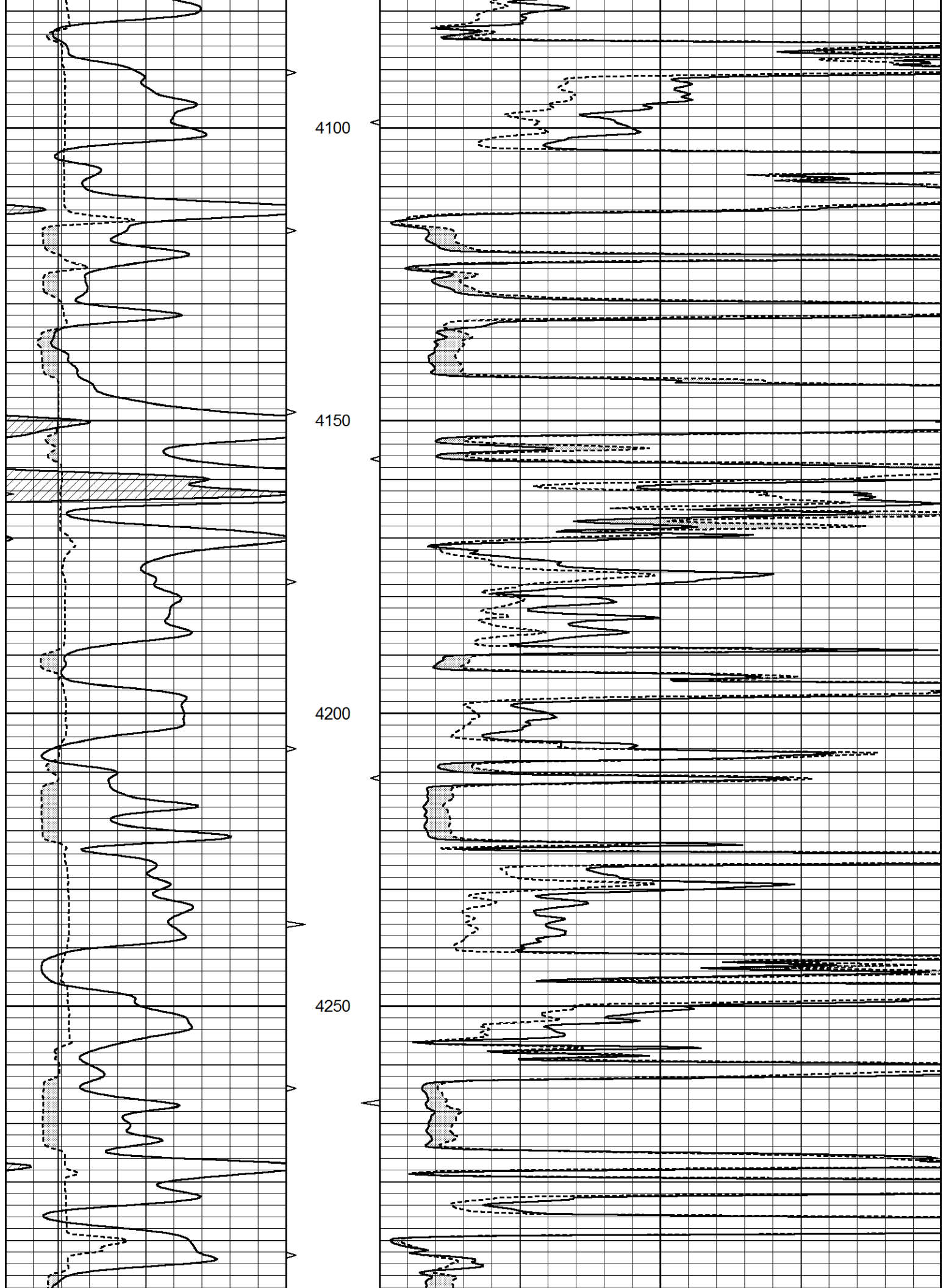


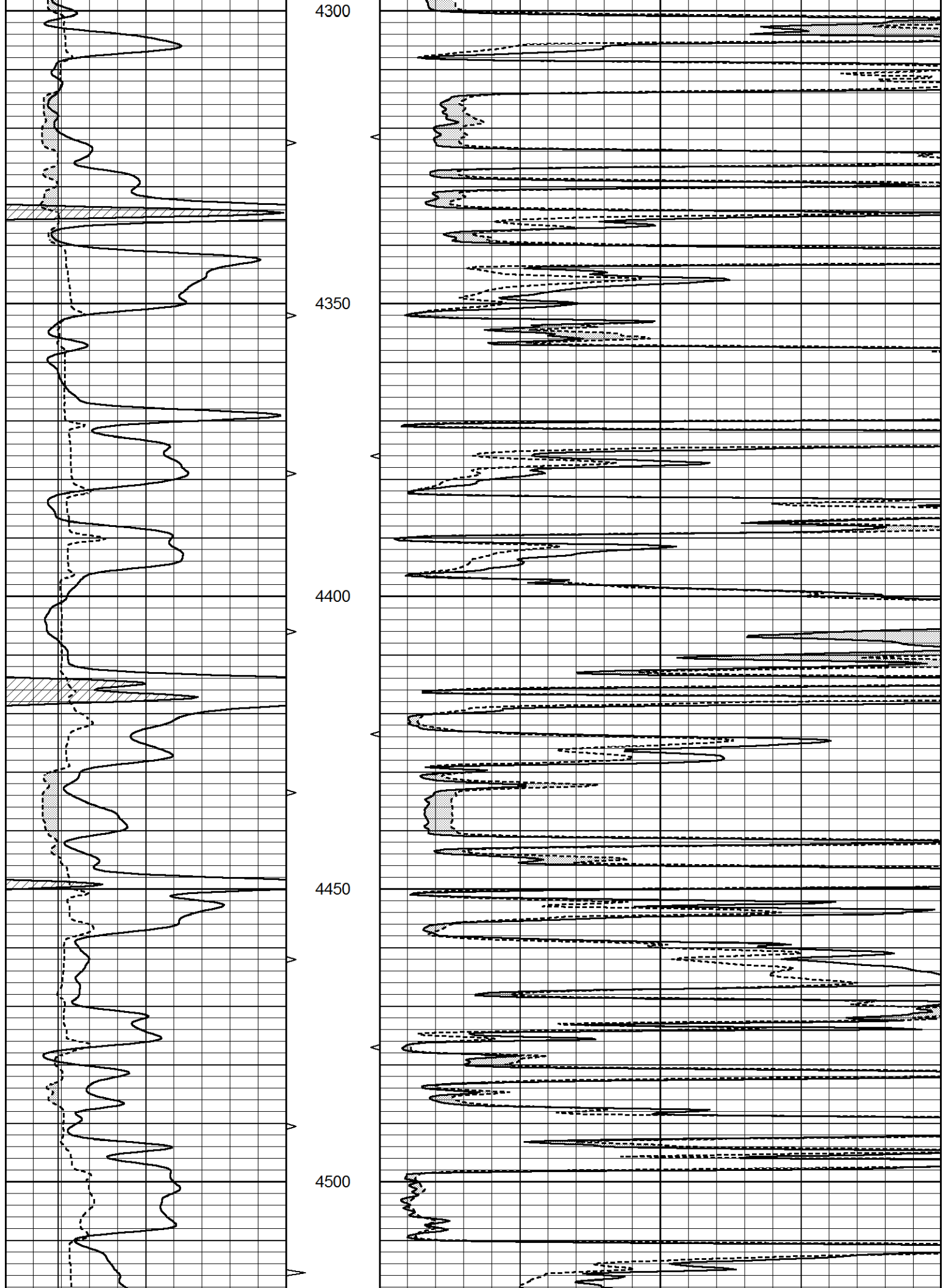
MAIN SECTION

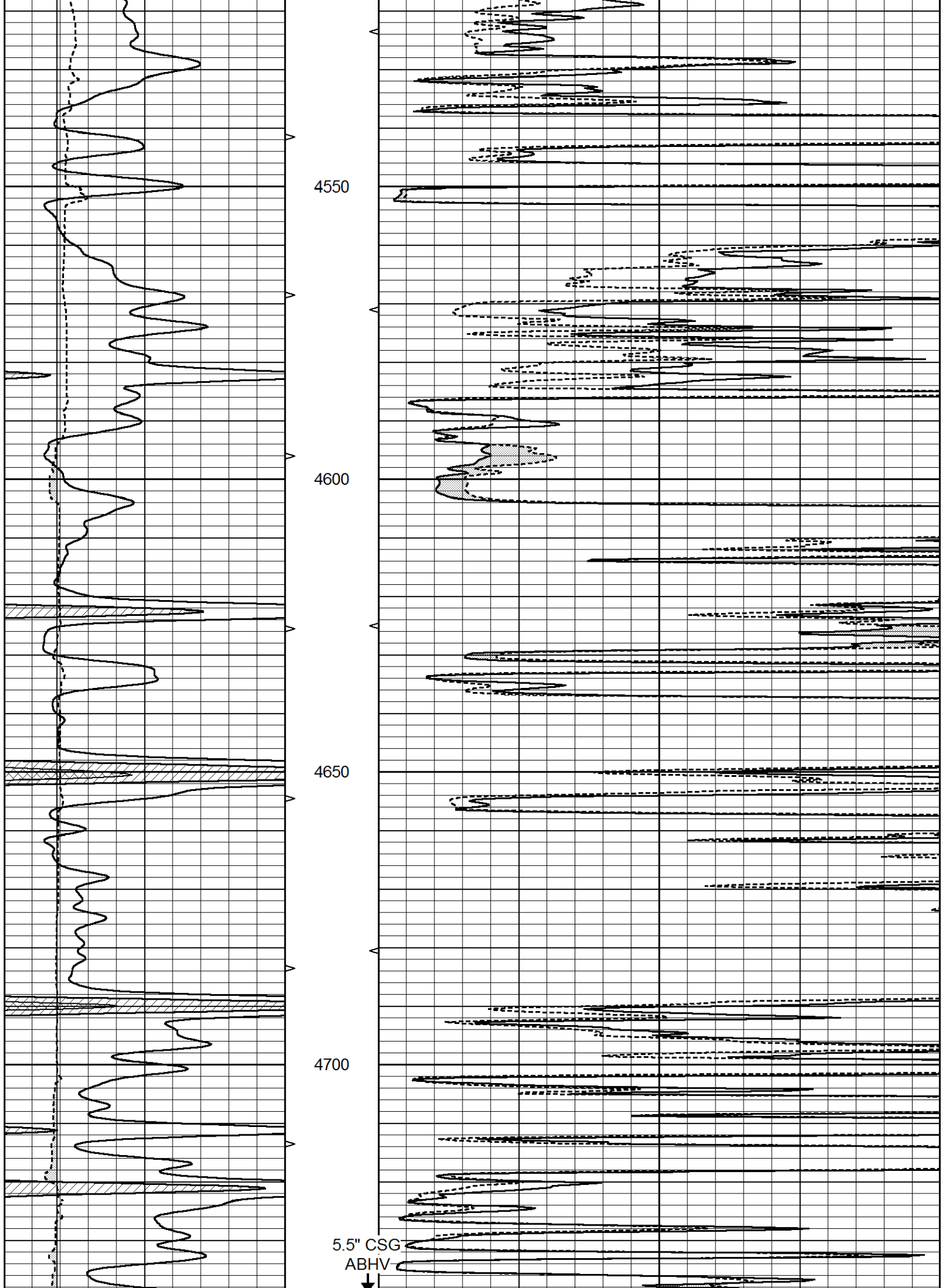
Database File 4735ddn.db
 Dataset Pathname pass6.1
 Presentation Format _micro
 Dataset Creation Thu Apr 09 20:56:04 2020
 Charted by Depth in Feet scaled 1:240

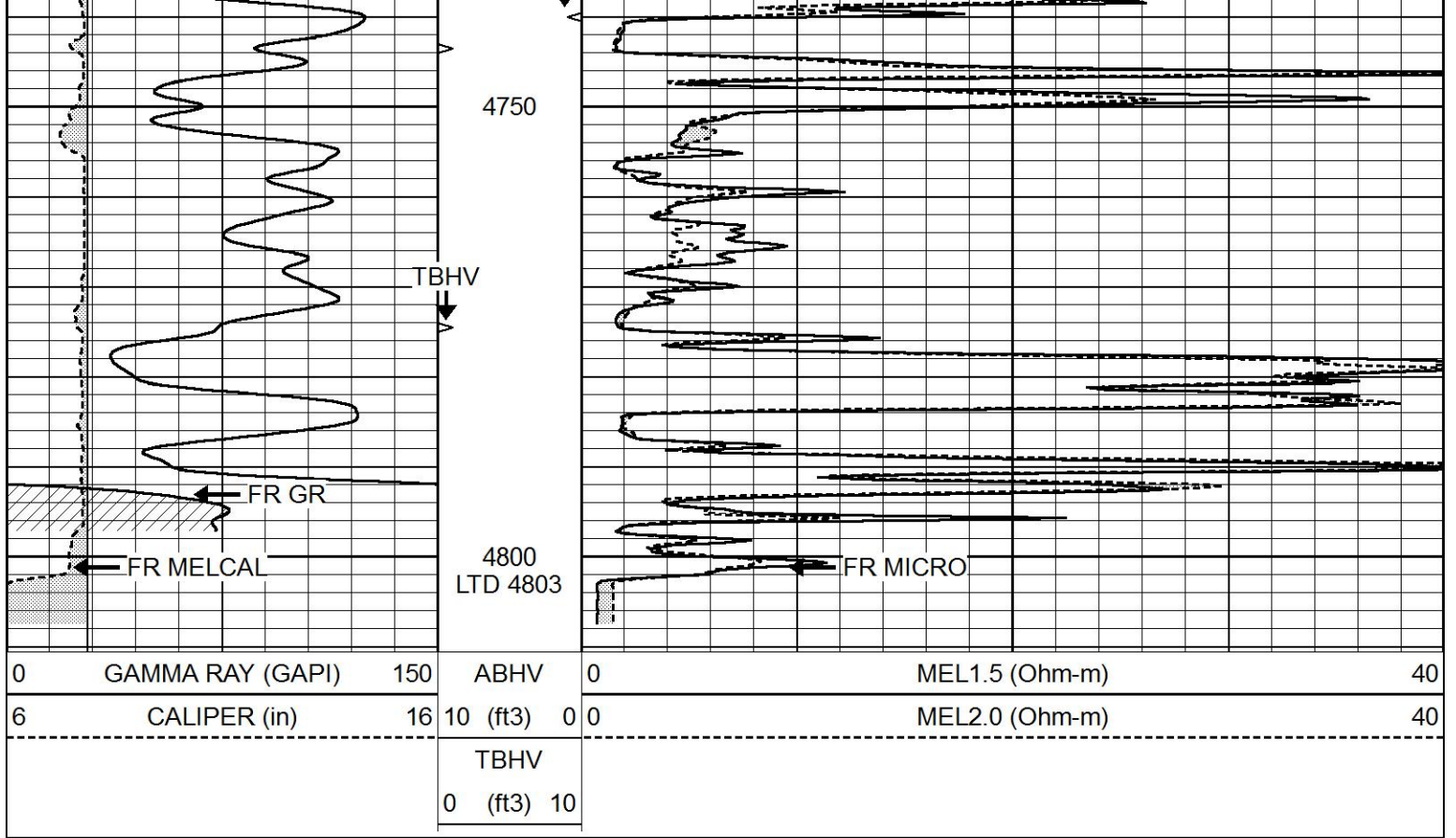
0	GAMMA RAY (GAPI)	150	ABHV	0	MEL1.5 (Ohm-m)	40
6	CALIPER (in)	16	10 (ft3)	0	MEL2.0 (Ohm-m)	40
			TBHV			
			0 (ft3)	10		







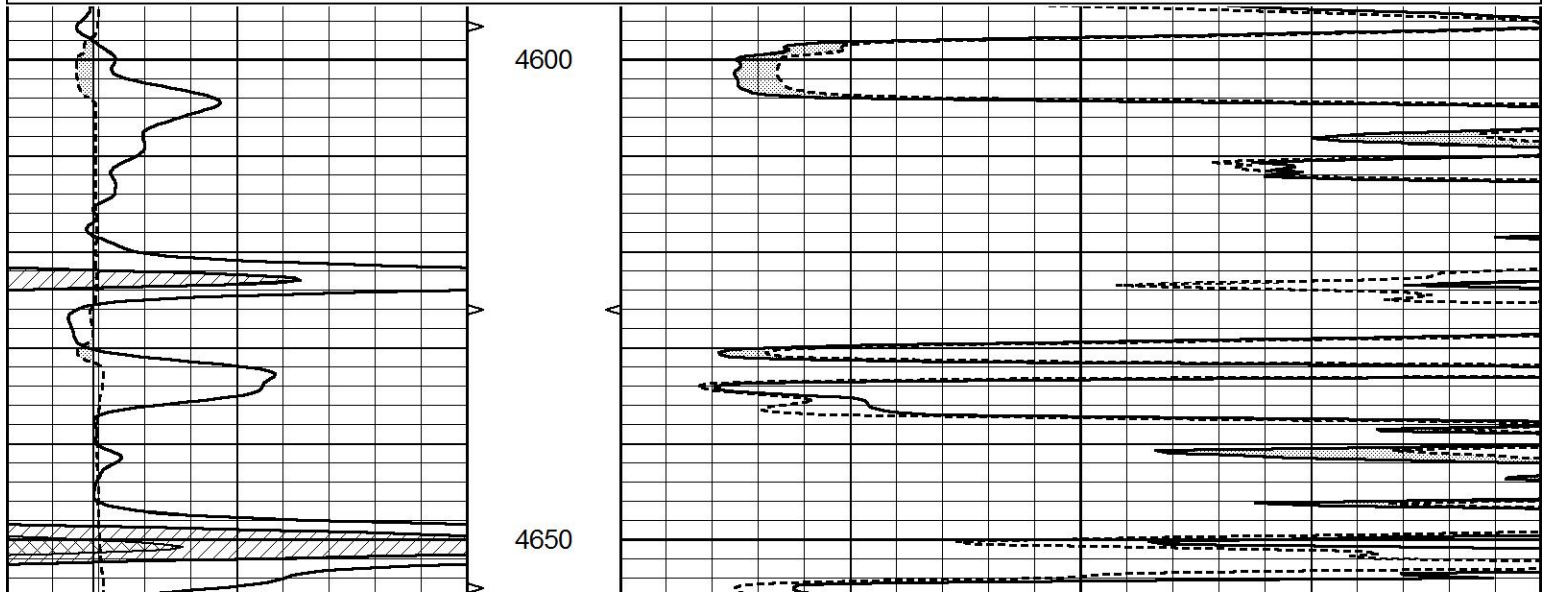


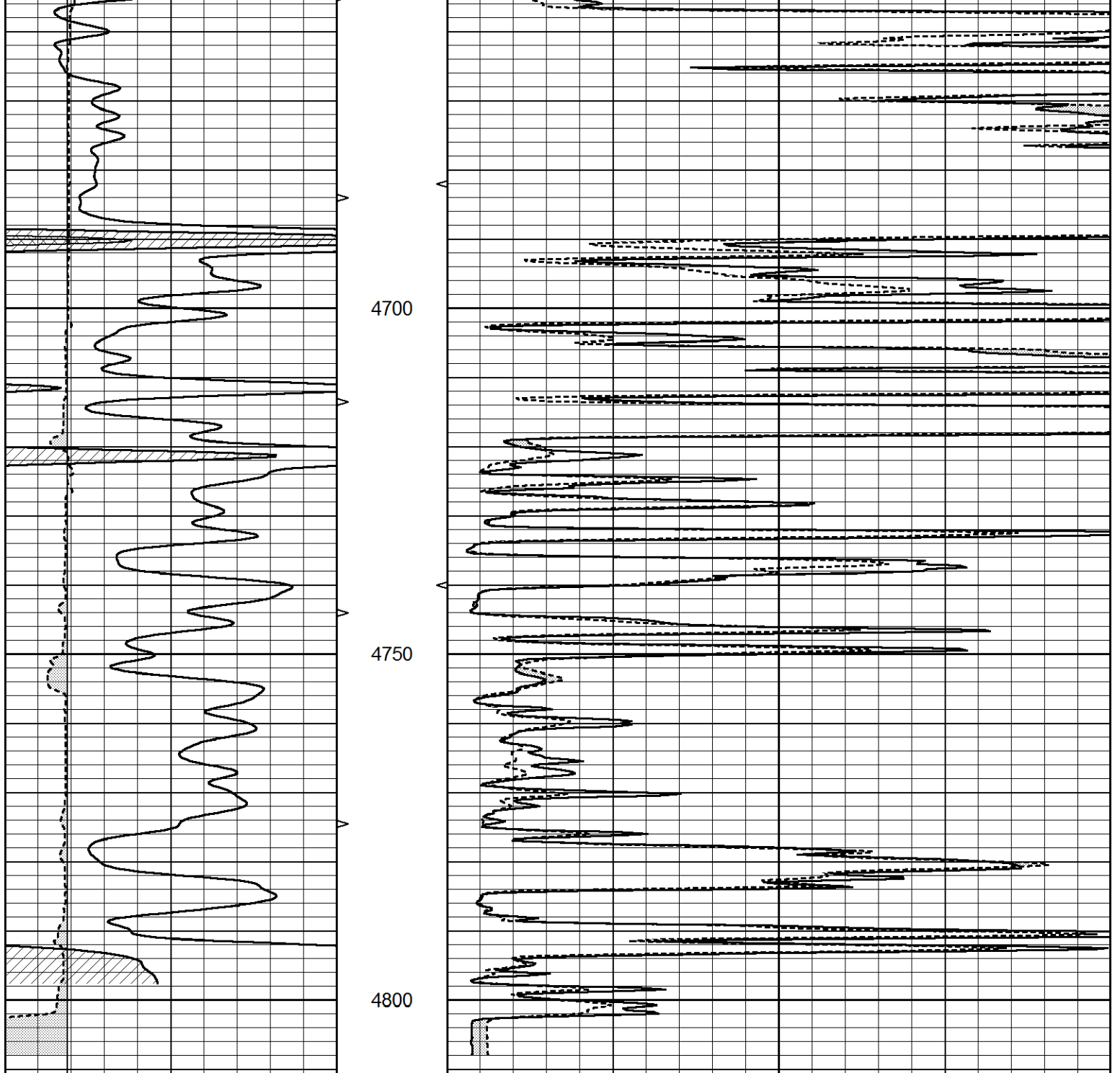


REPEAT SECTION

Database File 4735ddn.db
 Dataset Pathname pass5.1
 Presentation Format _micro
 Dataset Creation Thu Apr 09 20:54:13 2020
 Charted by Depth in Feet scaled 1:240

0	GAMMA RAY (GAPI)	150	ABHV	0	MEL1.5 (Ohm-m)	40
6	CALIPER (in)	16	10 (ft3) 0	0	MEL2.0 (Ohm-m)	40
			TBHV			
			0 (ft3) 10			





0	GAMMA RAY (GAPI)	150	ABHV	0	MEL1.5 (Ohm-m)	40
6	CALIPER (in)	16	10 (ft3)	0	MEL2.0 (Ohm-m)	40
			TBHV			
			0 (ft3)	10		

Calibration Report

Database File 4735ddn.db
 Dataset Pathname pass5.1
 Dataset Creation Thu Apr 09 20:54:13 2020

MICRO_USR Calibration Report

Serial Number: 070910
 Tool Model: Probel
 Performed: Mon Feb 24 07:51:20 2020

Caliper Calibration: Gain: 7.000 Offset: 0.007

Caliper Calibration:	Gain=7.282	Offset=3.087
References	Low Cal 8.000	High Cal 14.000
Readings	0.647	1.471

1.5" Calibration:	Gain=50.000	Offset=-0.567
References	Low Cal 0.000	High Cal 20.000
Readings	0.004	1.335

2" Calibration:	Gain=45.000	Offset=0.000
References	Low Cal 0.000	High Cal 20.000
Readings	0.004	1.029

Microlog Calibration Report

Serial-Model: Performed:	070910-ProbeL (Not Performed)
-----------------------------	----------------------------------

	Readings			References			Results	
	Zero	Cal		Zero	Cal		m	b
Normal	0.0000	1.0000	V	0.0000	1.0000	Ohm-m	1.0000	0.0000
Inverse	0.0000	1.0000	V	0.0000	1.0000	Ohm-m	1.0000	0.0000
Caliper	0.0000	1.0000	V	0.0000	1.0000	in	1.0000	0.0000

Gamma Ray Calibration Report

Serial Number:	070558
Tool Model:	Probe1
Performed:	Mon Jan 21 19:38:56 2019
Calibrator Value:	1.0 GAPI
Background Reading:	0.0 cps
Calibrator Reading:	1.0 cps
Sensitivity:	0.2500 GAPI/cps