



**DUAL
INDUCTION
LOG**

Company John O. Farmer, Inc.
Well Wolf #1
Field Polifka South
County Ellis
State KS

Company John O. Farmer, Inc.
Well Wolf #1
Field Polifka South
County Ellis State KS

Location: API #: 15 051 26932
1525' FNL & 2280' FEL
SEC 18 TWP 13S RGE 17W
Permanent Datum Ground Level Elevation 2133'
Log Measured From KB 8' AGL
Drilling Measured From KB

Other Services
ML
CDNL
Elevation
K.B. 2141'
D.F. 2140'
G.L. 2133'

Date	9-27-18
Run Number	One
Depth Driller	3740'
Depth Logger	3739'
Bottom Logged Interval	3737'
Top Log Interval	210'
Casing Driller	8 5/8" @ 221'
Casing Logger	221'
Bit Size	7 7/8"
Type Fluid in Hole	Chemical Mud
Density / Viscosity	9.1/50
PH / Fluid Loss	9.0/10.8
Source of Sample	Pit
Rm @ Meas. Temp	1.2@72degf
Rmf @ Meas. Temp	0.9@72degf
Rmc @ Meas. Temp	1.44@72degf
Source of Rmf / Rmc	Calculated
Rm @ BHT	0.84@103degf
Time Circulation Stopped	1:30 a.m
Time Logger on Bottom	3:50 a.m
Maximum Recorded Temperature	103degf
Equipment Number	T127
Location	Hays, KS.
Recorded By	C.Patterson
Witnessed By	Mr. Austin Klaus

<<< Fold Here >>>

All interpretations are opinions based on inferences from electrical or other measurements and we cannot and do not guarantee the accuracy or correctness of any interpretation, and we shall not, except in the case of gross or willful negligence on our part, be liable or responsible for any loss, costs, damages, or expenses incurred or sustained by anyone resulting from any interpretation made by any of our officers, agents or employees. These interpretations are also subject to our general terms and conditions set out in our current Price Schedule.

Comments

North On Toulon Ave. to Catherine Rd., West on Catherine Rd Approx 500 Ft.,
South to West Into Location

Thank you for using Gemini Wireline
785-625-1182



MAIN PASS

Database File jofwolf#1oh.db
 Dataset Pathname pass4.1
 Presentation Format kdillinn
 Dataset Creation Thu Sep 27 05:42:38 2018
 Charted by Depth in Feet scaled 1:600

0 GR (GAPI) 150

1000 CILD (mmho/m) 0

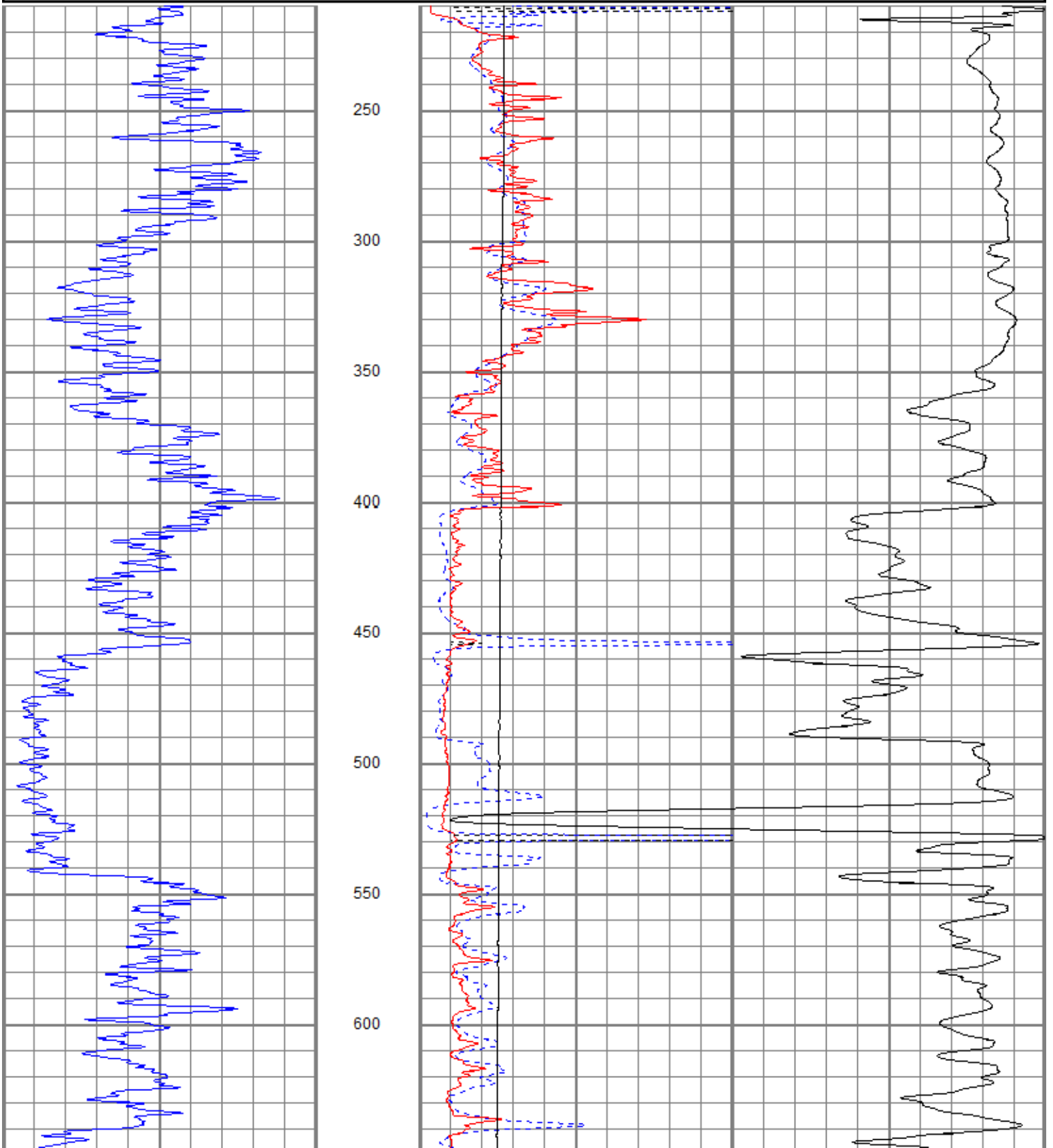
10000 LTEN (lb) 0

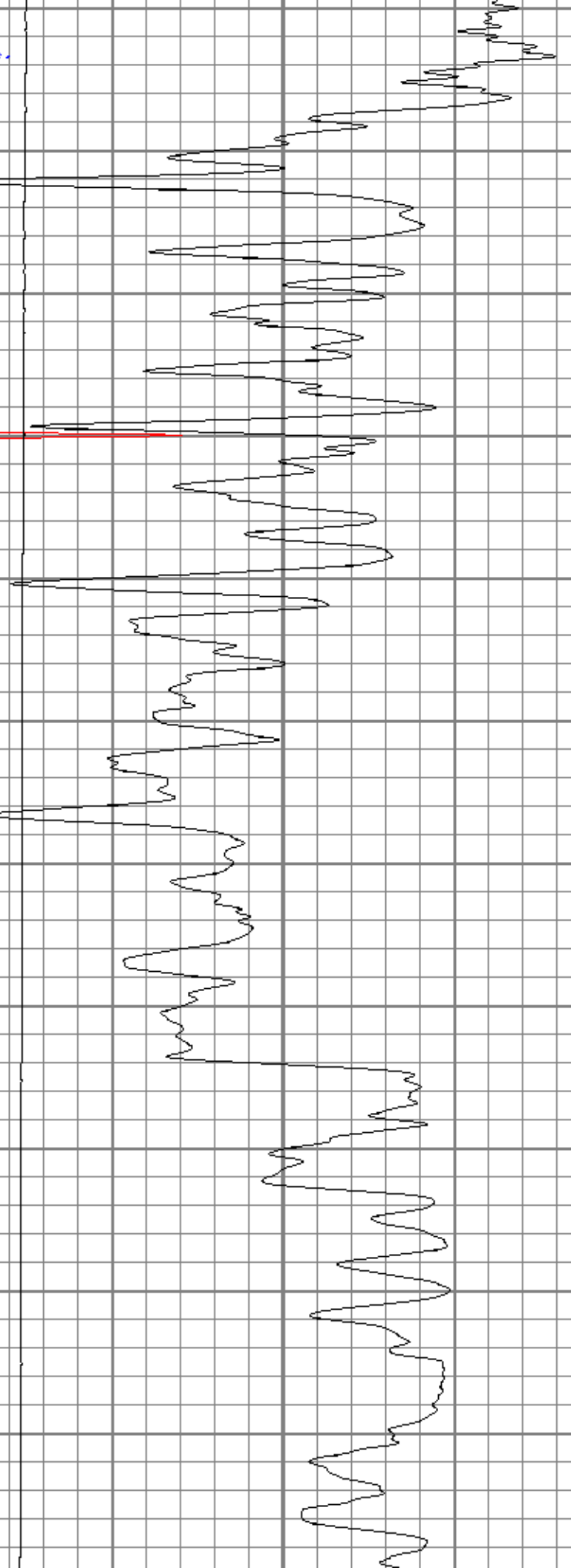
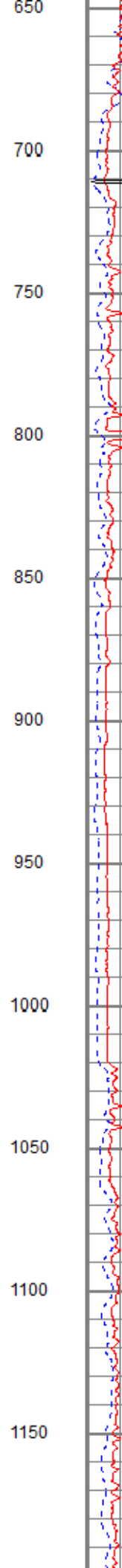
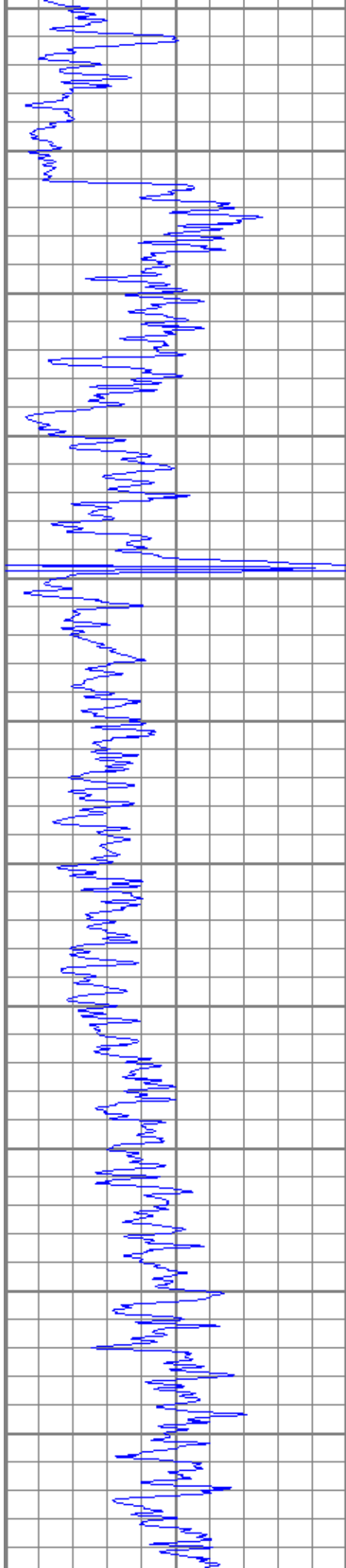
0 RILD (Ohm-m) 50

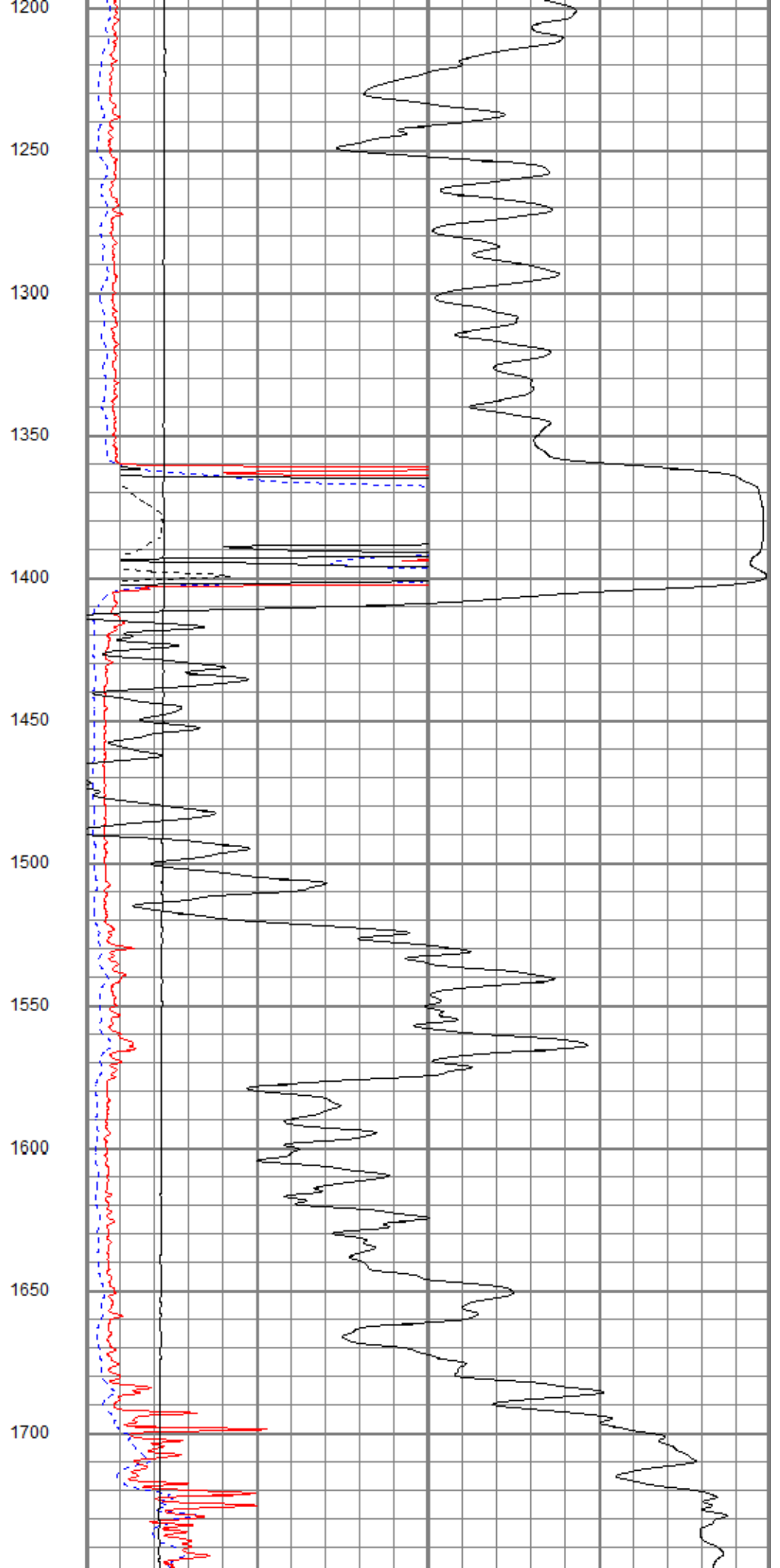
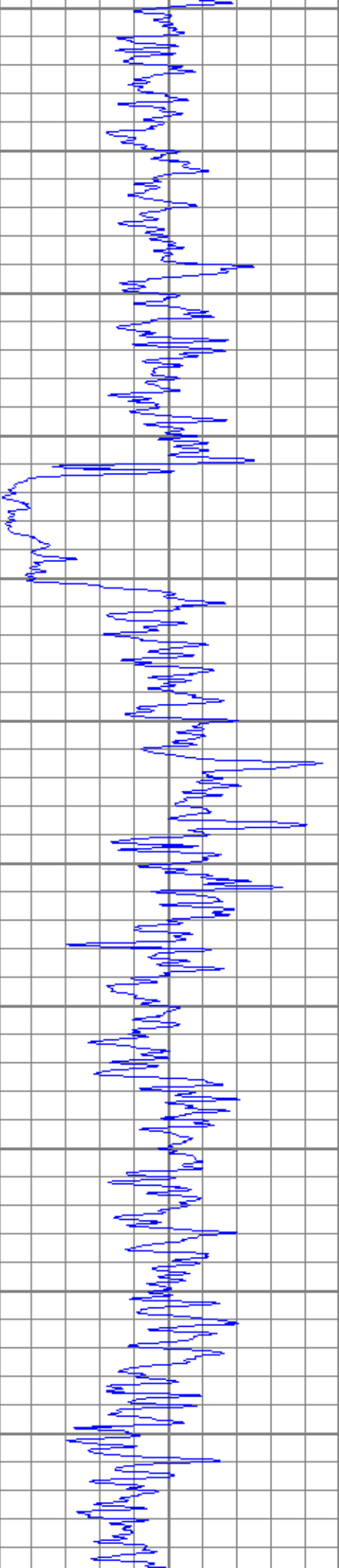
0 RLL3 (Ohm-m) 50

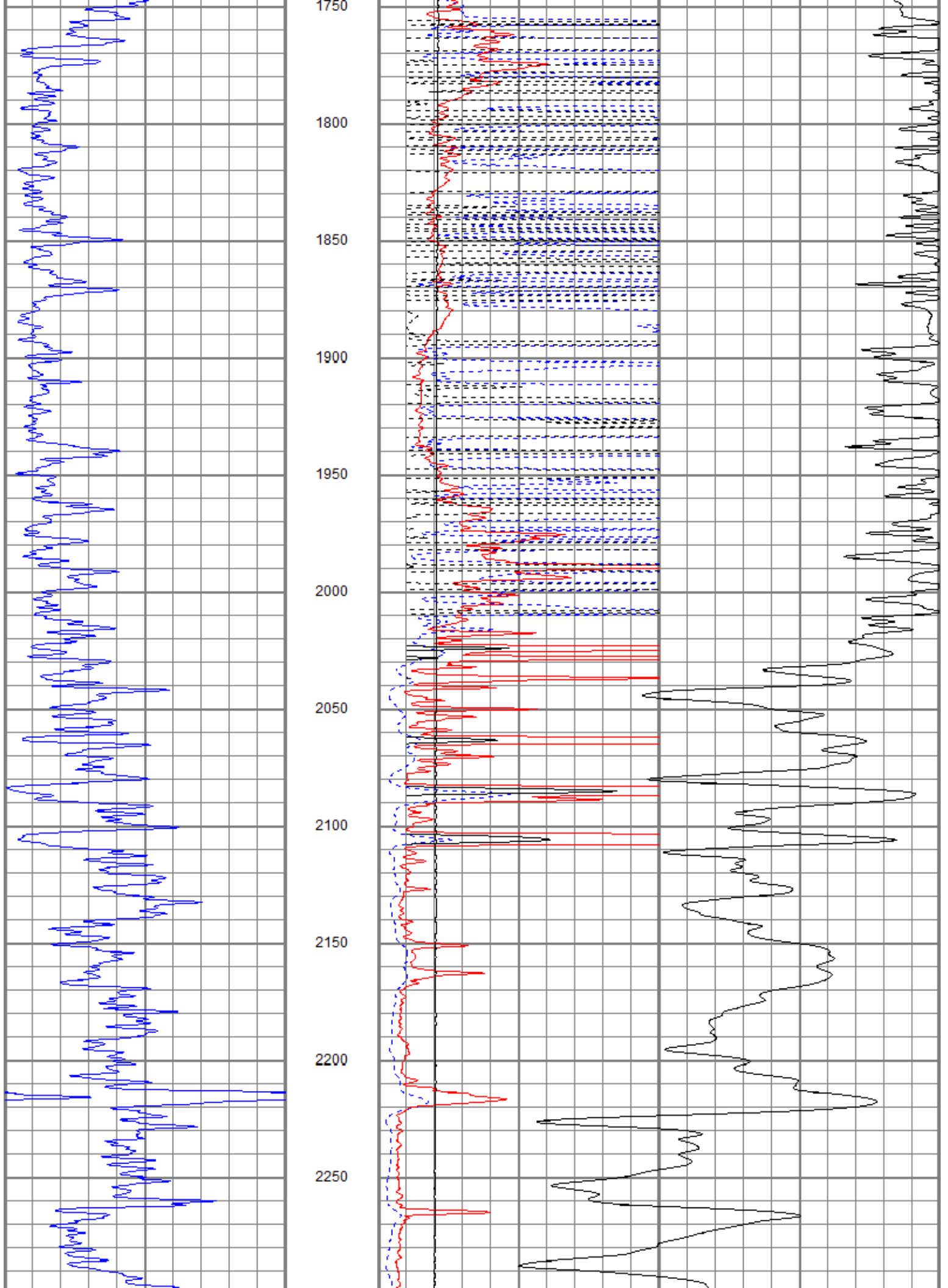
50 RILD x 10 (Ohm-m) 500

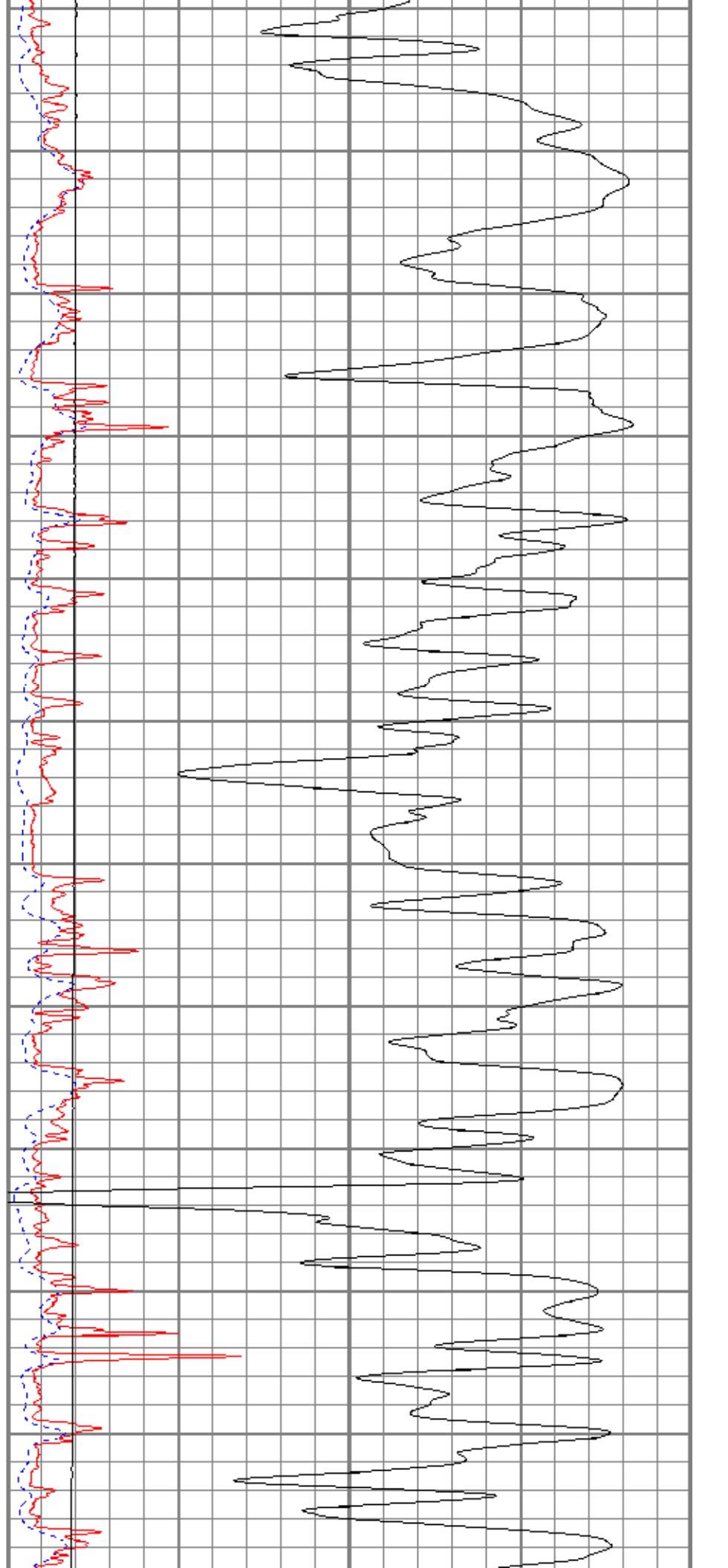
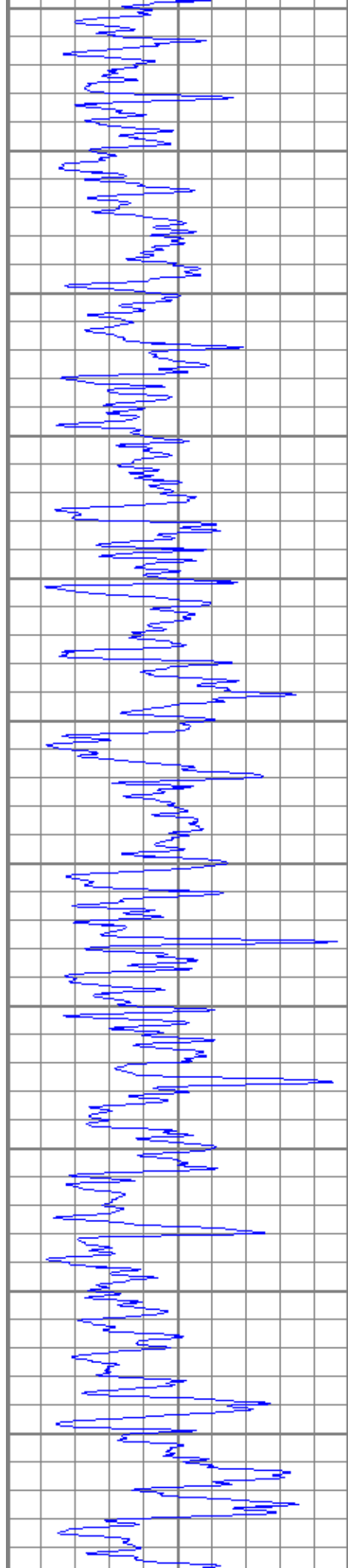
50 RLL3 x 10 (Ohm-m) 500

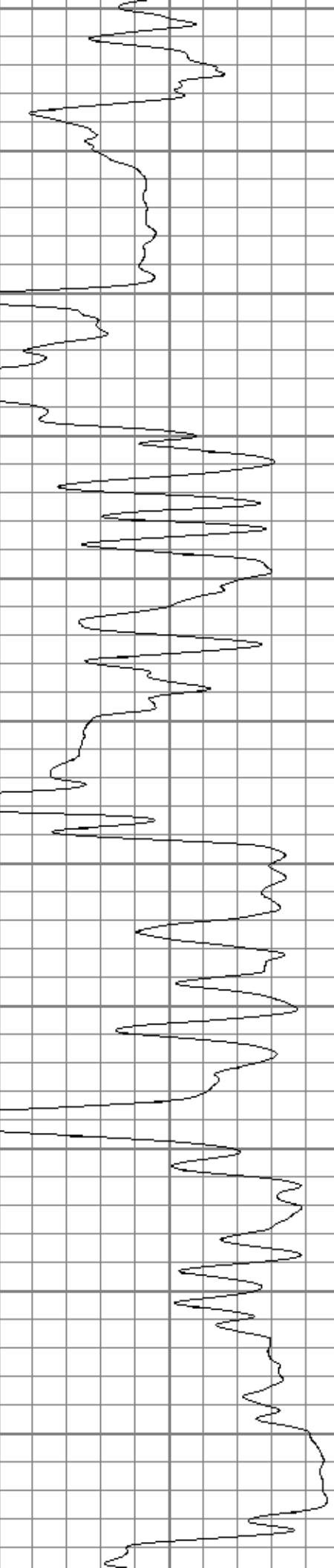
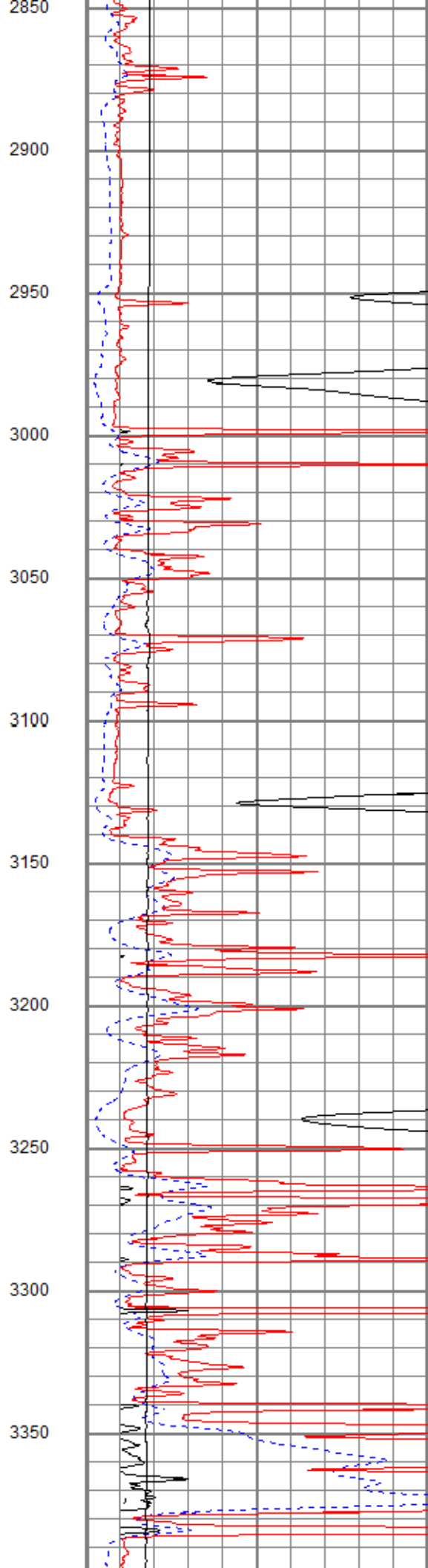
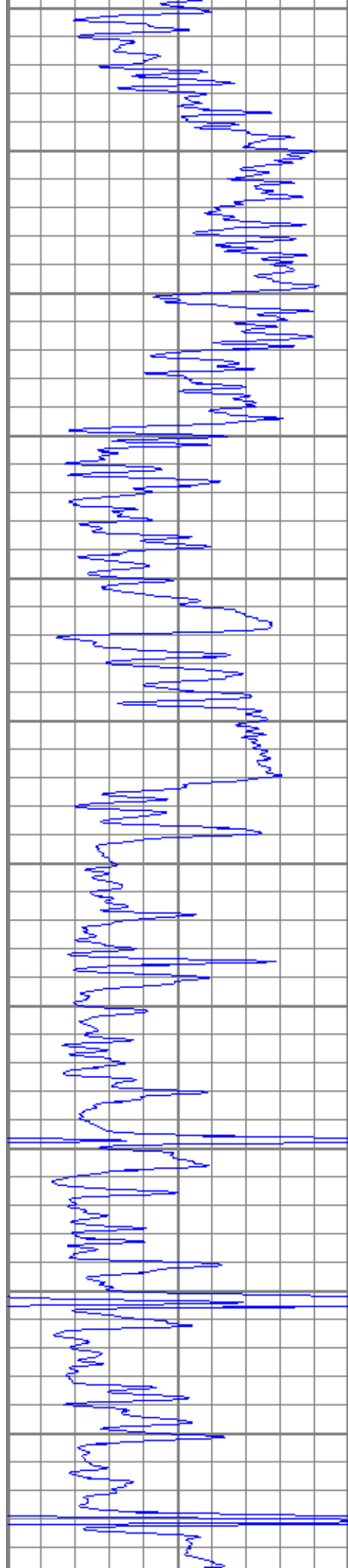


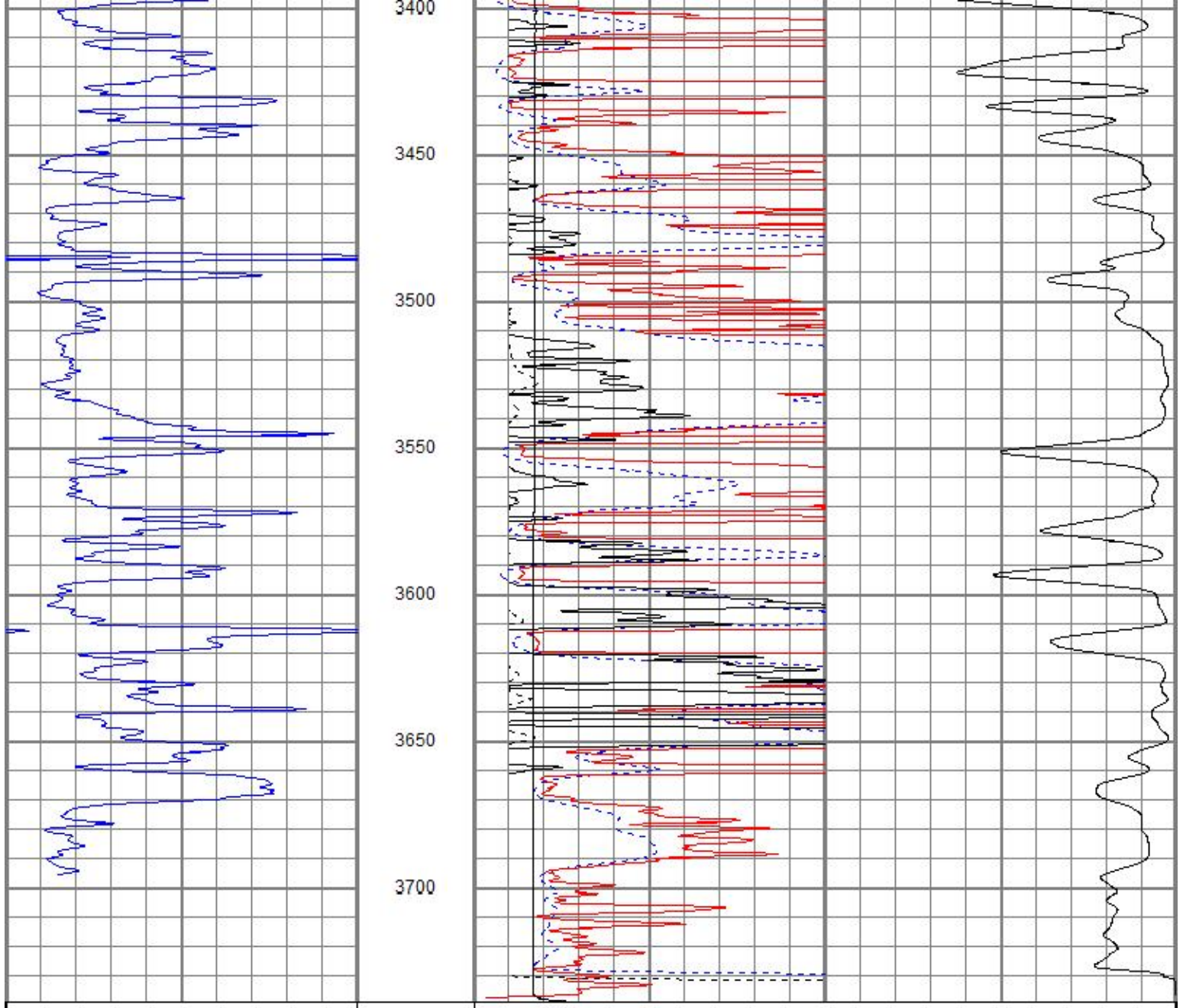












0 GR (GAPI) 150

1000 CILD (mmho/m) 0

10000 LTEN (lb) 0

0	RILD (Ohm-m)	50
0	RLL3 (Ohm-m)	50
50	RILD x 10 (Ohm-m)	500
50	RLL3 x 10 (Ohm-m)	500

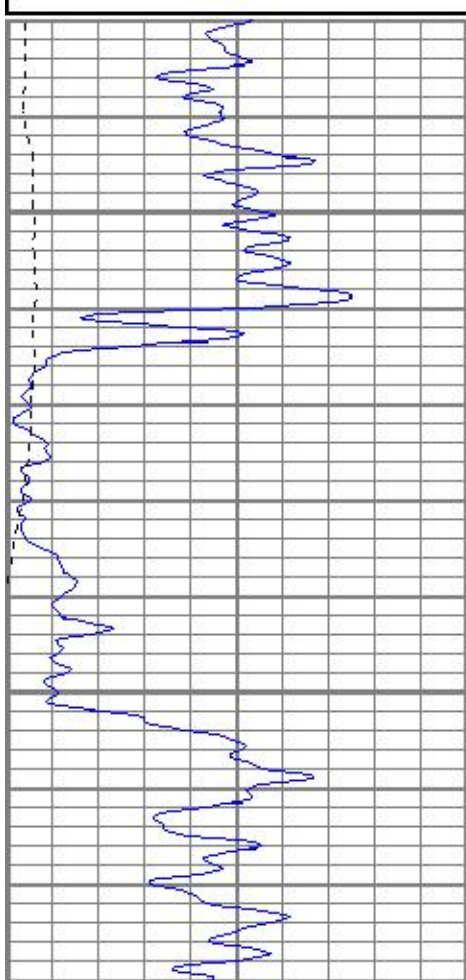


MAIN PASS

Database File jofwolf#1oh.db
 Dataset Pathname pass4.1
 Presentation Format kdil
 Dataset Creation Thu Sep 27 05:42:38 2018
 Charted by Depth in Feet scaled 1:240

0	GR (GAPI)	150
-100	SP (mV)	100

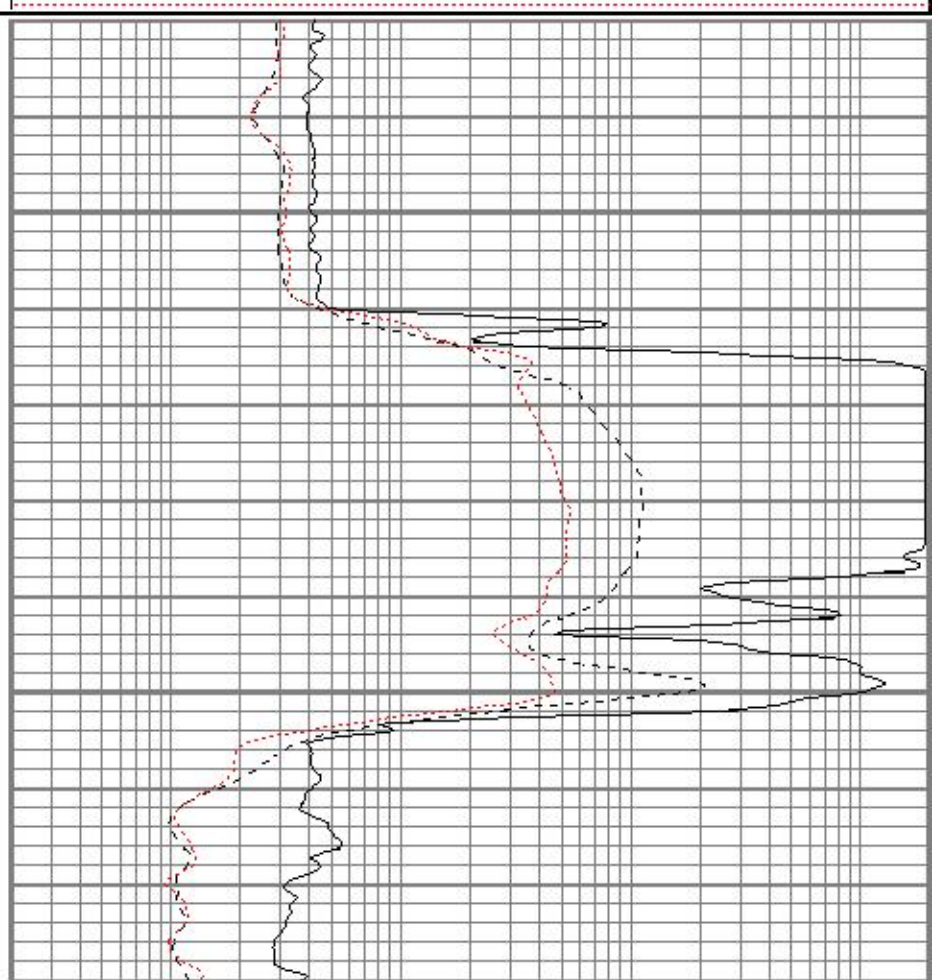
0.2	RILD (Ohm-m)	2000
0.2	RLL3 (Ohm-m)	2000
0.2	RILM (Ohm-m)	2000



1350

1400

0	GR (GAPI)	150
-100	SP (mV)	100



0.2	RILD (Ohm-m)	2000
0.2	RLL3 (Ohm-m)	2000
0.2	RILM (Ohm-m)	2000

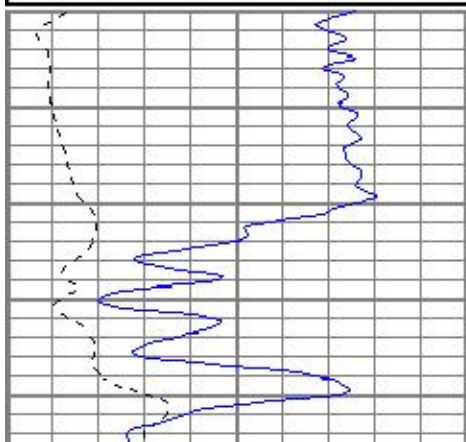


MAIN PASS

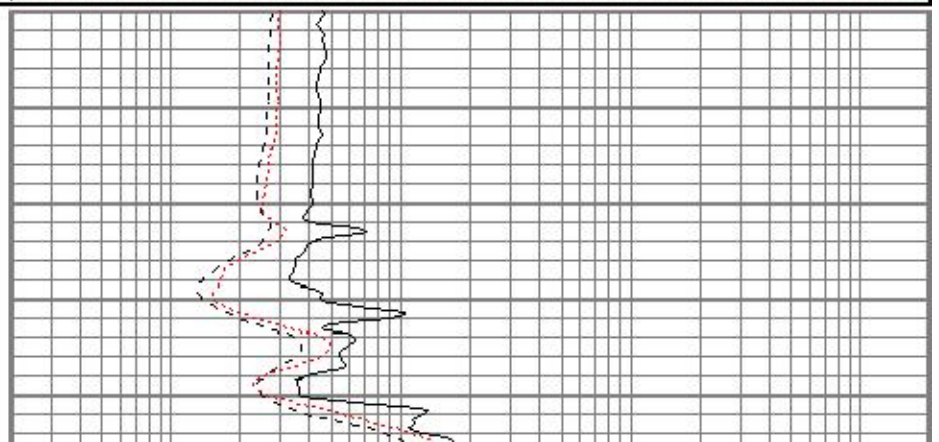
Database File jofwolf#1oh.db
 Dataset Pathname pass4.1
 Presentation Format kdil
 Dataset Creation Thu Sep 27 05:42:38 2018
 Charted by Depth in Feet scaled 1:240

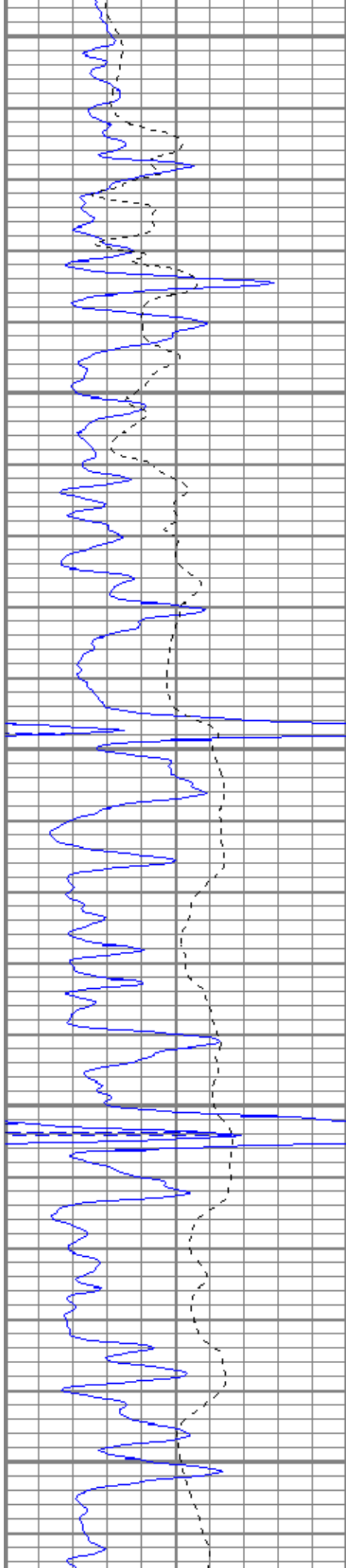
0	GR (GAPI)	150
-100	SP (mV)	100

0.2	RILD (Ohm-m)	2000
0.2	RLL3 (Ohm-m)	2000
0.2	RILM (Ohm-m)	2000



1350





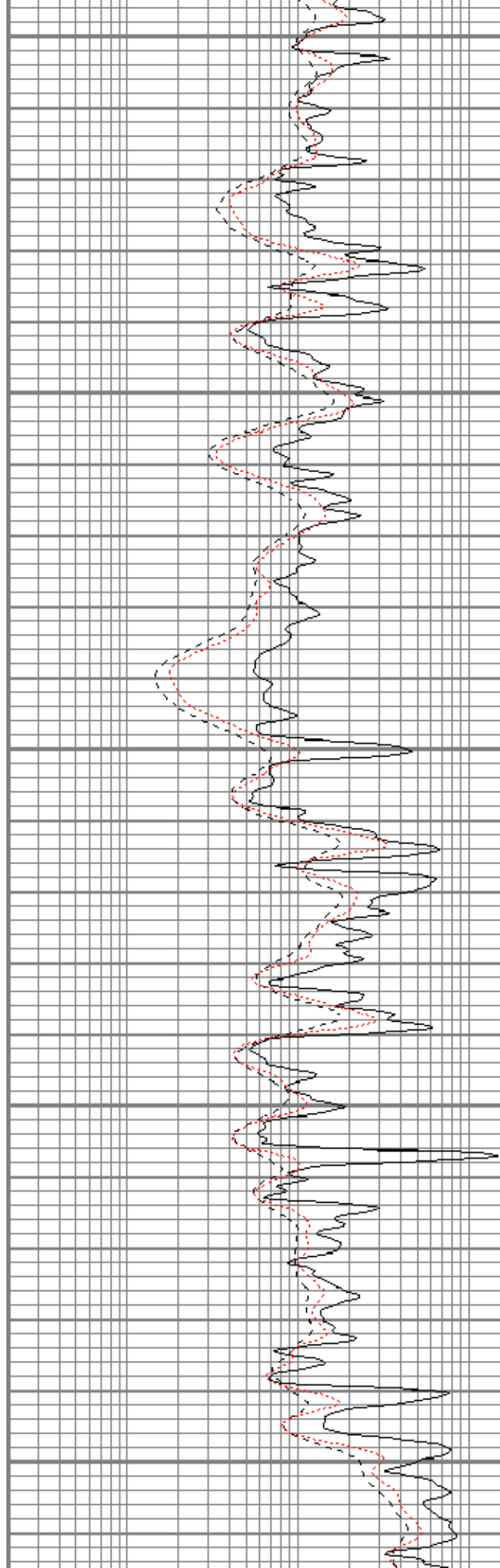
3150

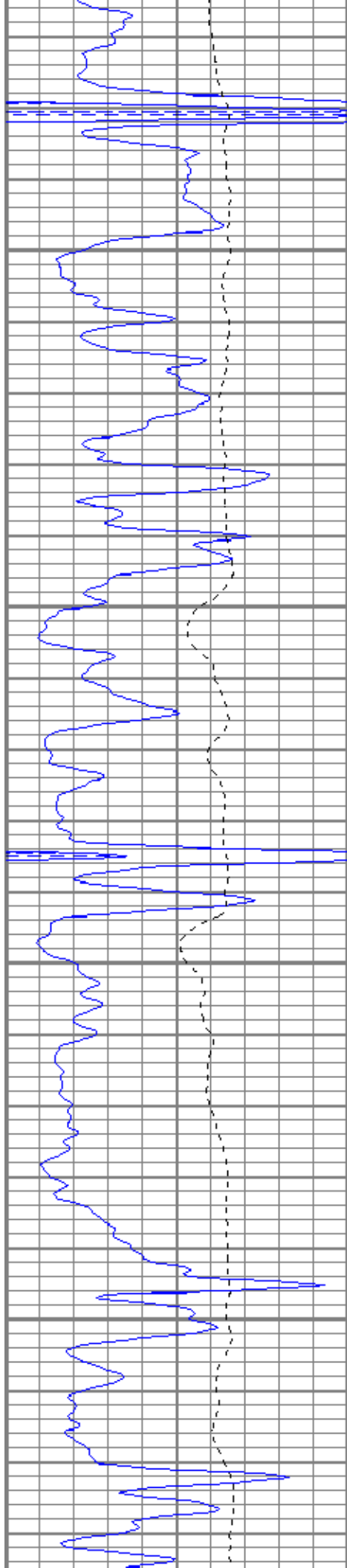
3200

3250

3300

3350



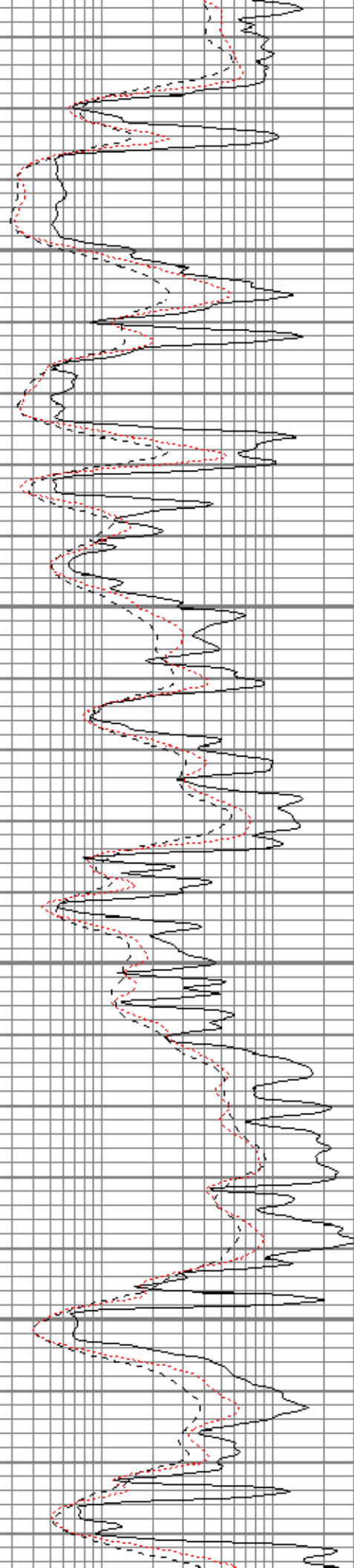


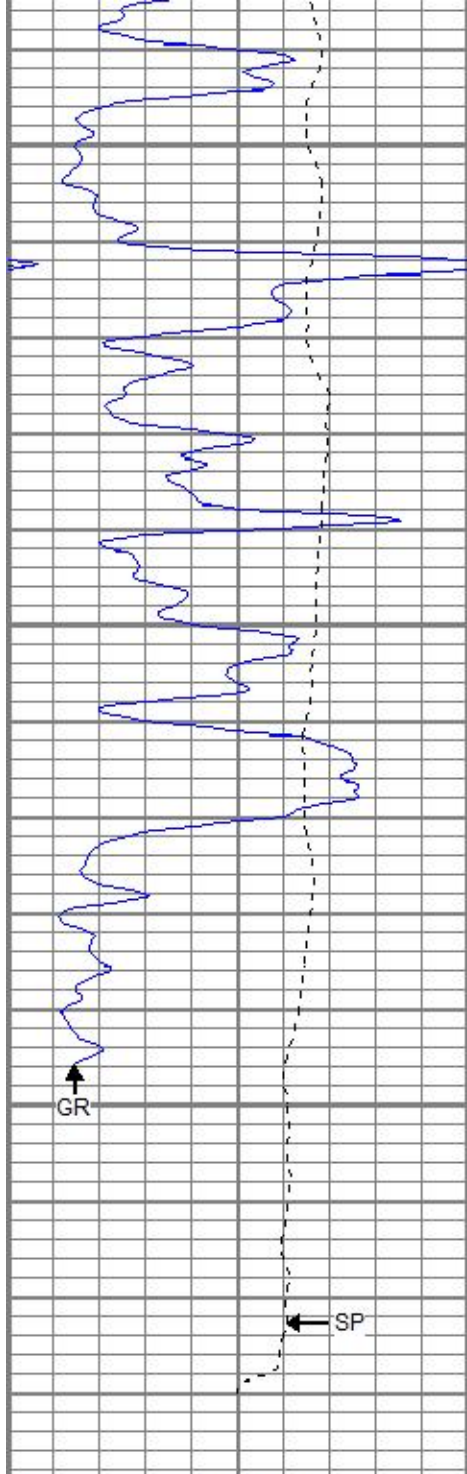
3400

3450

3500

3550





3600

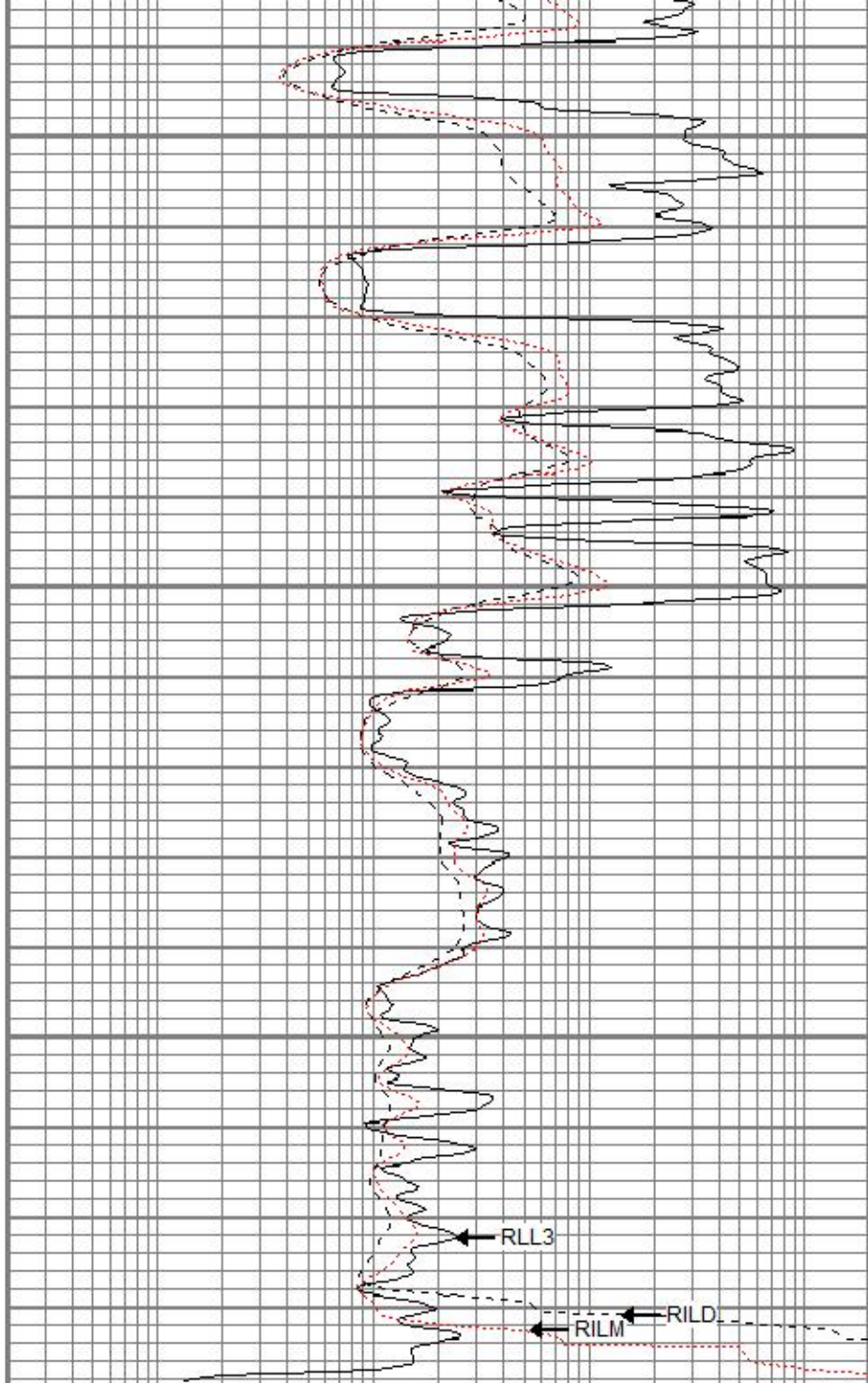
3650

3700

GR

SP

0	GR (GAPI)	150
-100	SP (mV)	100



RLL3

RILD

RILM

0.2	RILD (Ohm-m)	2000
0.2	RLL3 (Ohm-m)	2000
0.2	RILM (Ohm-m)	2000

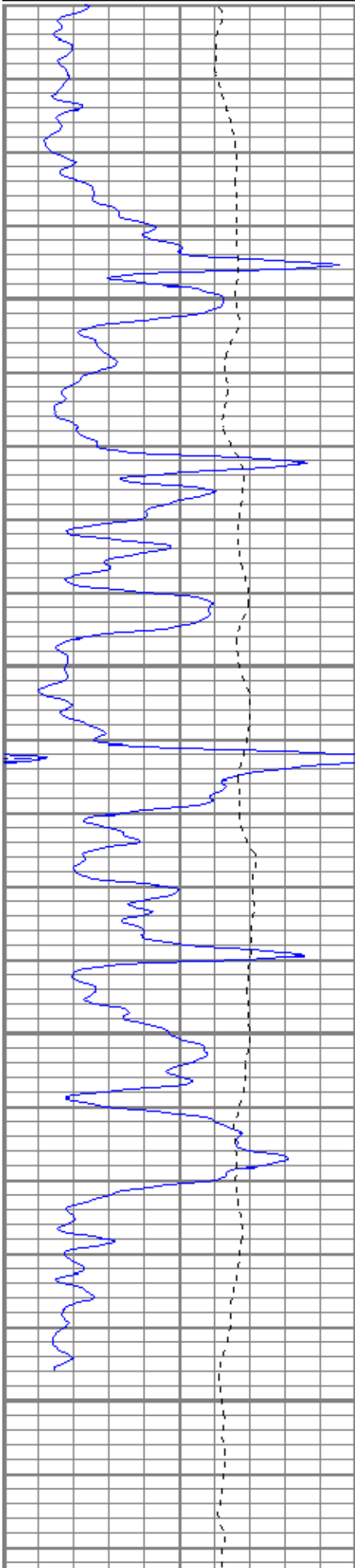


REPEAT SECTION

Database File	jofwolf#10h.db		
Dataset Pathname	pass3.1		
Presentation Format	kdil		
Dataset Creation	Thu Sep 27 05:13:33 2018		
Charted by	Depth in Feet scaled 1:240		

0	GR (GAPI)	150
-100	SP (mV)	100

0.2	RILD (Ohm-m)	2000
0.2	RLL3 (Ohm-m)	2000

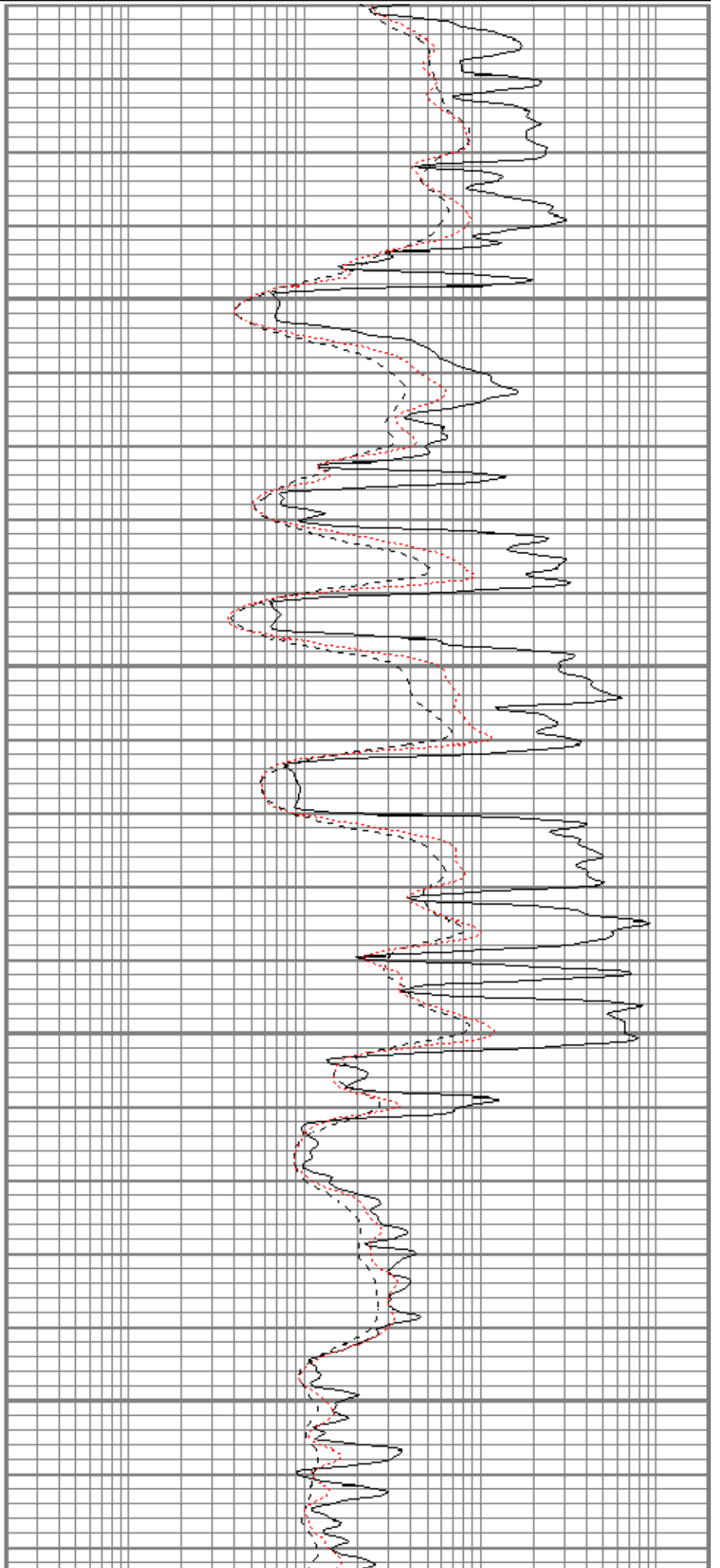


3550

3600

3650

3700



0	GR (GAPI)	150	0.2	RILD (Ohm-m)	2000
-100	SP (mV)	100	0.2	RLL3 (Ohm-m)	2000
			0.2	RILM (Ohm-m)	2000

Database File		jofwolf#1oh.db		Calibration Report	
Dataset Pathname		pass4.1			
Dataset Creation		Thu Sep 27 05:42:38 2018			

Dual Induction Calibration Report

Serial-Model:	5375-G
Surface Cal Performed:	Sat Oct 10 08:33:18 2015
Downhole Cal Performed:	Sat Oct 10 08:33:23 2015
After Survey Verification Performed:	Sat Oct 10 08:33:27 2015

Surface Calibration								
Loop:	Readings			References			Results	
	Air	Loop		Air	Loop		m	b
Deep	0.007	0.642	V	0.000	350.000	mmho/m	551.294	-3.816
Medium	0.010	0.728	V	0.000	400.000	mmho/m	556.531	-5.391
Internal:	Zero	Cal		Zero	Cal		m	b
Deep	0.007	0.642	V	0.000	350.000	mmho/m	550.717	-3.768
Medium	0.010	0.729	V	0.000	550.000	mmho/m	764.510	-7.354

Downhole Calibration								
Internal:	Readings			References			Results	
	Zero	Cal		Zero	Cal		m	b
Deep	0.145	350.239	mmho/m	-0.044	350.323	mmho/m	1.001	-0.189
Medium	0.435	400.472	mmho/m	-0.037	400.340	mmho/m	1.001	-0.473
Shallow	2.440	0.018	V	500.000	2.000	Ohm-m	185.000	1.324

After Survey Verification								
Internal:	Readings			Targets			Results	
	Zero	Cal		Zero	Cal		m'	b'
Deep	0.000	0.000	mmho/m	0.145	350.239	mmho/m	1.001	-0.189
Medium	0.000	0.000	mmho/m	0.435	400.472	mmho/m	1.001	-0.473
Shallow	0.000	0.000	Ohm-m	500.000	2.000	Ohm-m	1.000	0.000

Neutron Calibration Report	
Serial Number:	ADM5139
Tool Model:	Admyr
Performed:	(Not Performed)
Calibrator Value:	1 NAPI
Calibrator Reading:	1 cps
Sensitivity:	1 NAPI/cps

Temperature Calibration Report

Serial Number: WithMC
 Tool Model: WMC
 Performed: (Not Performed)

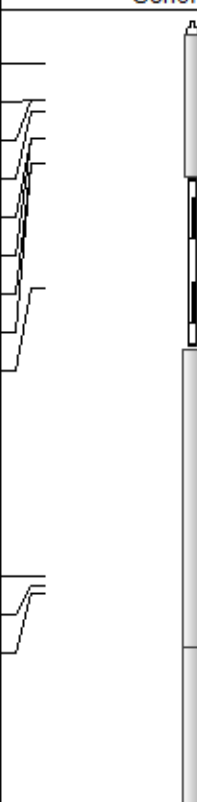
	Reference	Reading
Low Reference:	0.00 degF	0.00 degF
High Reference:	1.00 degF	1.00 degF
Gain:	1.00	
Offset:	0.00	
Delta Spacing	1	

Inclinometer Calibration Report

Performed:	Mon Aug 07 11:02:07 2017				
	Low Read.	High Read.	Low Ref.	High Ref.	
X Accelerometer	205.00	1843.00	-1.00	1.00	gee
Y Accelerometer	205.00	1843.00	-1.00	1.00	gee
Z Accelerometer					gee

Gamma Ray Calibration Report

Serial Number:	WithMC	
Tool Model:	WMC	
Performed:	Mon Aug 07 11:03:41 2017	
Calibrator Value:	1.0	GAPI
Background Reading:	0.0	cps
Calibrator Reading:	1.0	cps
Sensitivity:	0.9000	GAPI/cps

Sensor	Offset (ft)	Schematic	Description	Length (ft)	O.D. (in)	Weight (lb)
			CHD-STD	0.50	1.69	1.00
GR	40.47					
ACCY	39.30		ADT-WMC (WithMC)	4.58	3.50	120.00
ACCX	39.30		Admyr Telemetry With Mudcell			
SSTAT	38.89					
PSTAT	38.05					
ASTAT	38.05		NEU-Admyr (ADM5139)	5.65	3.50	85.00
GRD	37.22					
TEMP	37.22					
NEU	33.15					
			CDL-GEARHART (2501)	9.69	4.00	240.00
LSD	23.78					
DCAL	23.49					
SSD	23.24					

SP	10.60		DIL-G (5375) Gearhart	21.47	4.00	345.00
CILD	10.60					
CILM	6.89					
RLL3	1.70					

Dataset: jofwolf#1oh.db: field/well/run1/pass4.1
 Total length: 41.89 ft
 Total weight: 791.00 lb
 O.D.: 4.00 in