



**MICRO
RESISTIVITY
LOG**

Company John O. Farmer, Inc.
Well Wolf #1
Field Polifka South
County Ellis
State KS

Company John O. Farmer, Inc.
Well Wolf #1
Field Polifka South
County Ellis State KS

Location: API #: 15 051 26932
1525' FNL & 2280' FEL
SEC 18 TWP 13S RGE 17W
Permanent Datum Ground Level Elevation 2133'
Log Measured From KB 8' AGL
Drilling Measured From KB
Elevation
DIL
CDNL
Other Services

Date	9-27-18		
Run Number	Two		
Depth Driller	3740'		
Depth Logger	3736'		
Bottom Logged Interval	3734'		
Top Log Interval	3100'		
Casing Driller	8 5/8" @ 221'		
Casing Logger	221'		
Bit Size	7 7/8"		
Type Fluid in Hole	Chemical Mud	Chlorides 5000 PPM	
Density / Viscosity	9.1/50		
PH / Fluid Loss	9.0/10.8		
Source of Sample	Pit		
Rm @ Meas. Temp	1.2@72degf		
Rmf @ Meas. Temp	0.9@72degf		
Rmc @ Meas. Temp	1.44@72degf		
Source of Rmf / Rmc	Calculated		
Rm @ BHT	0.84@103degf		
Time Circulation Stopped	1:30 a.m		
Time Logger on Bottom	6:15 a.m		
Maximum Recorded Temperature	103degf		
Equipment Number	T127		
Location	Hays, KS.		
Recorded By	C.Patterson		
Witnessed By	Mr. Austin Klaus		

<<< Fold Here >>>

All interpretations are opinions based on inferences from electrical or other measurements and we cannot and do not guarantee the accuracy or correctness of any interpretation, and we shall not, except in the case of gross or willful negligence on our part, be liable or responsible for any loss, costs, damages, or expenses incurred or sustained by anyone resulting from any interpretation made by any of our officers, agents or employees. These interpretations are also subject to our general terms and conditions set out in our current Price Schedule.

Comments

North On Toulon Ave. to Catherine Rd., West on Catherine Rd Approx 500 Ft.,
South to West Into Location

Thank you for using Gemini Wireline
785-625-1182

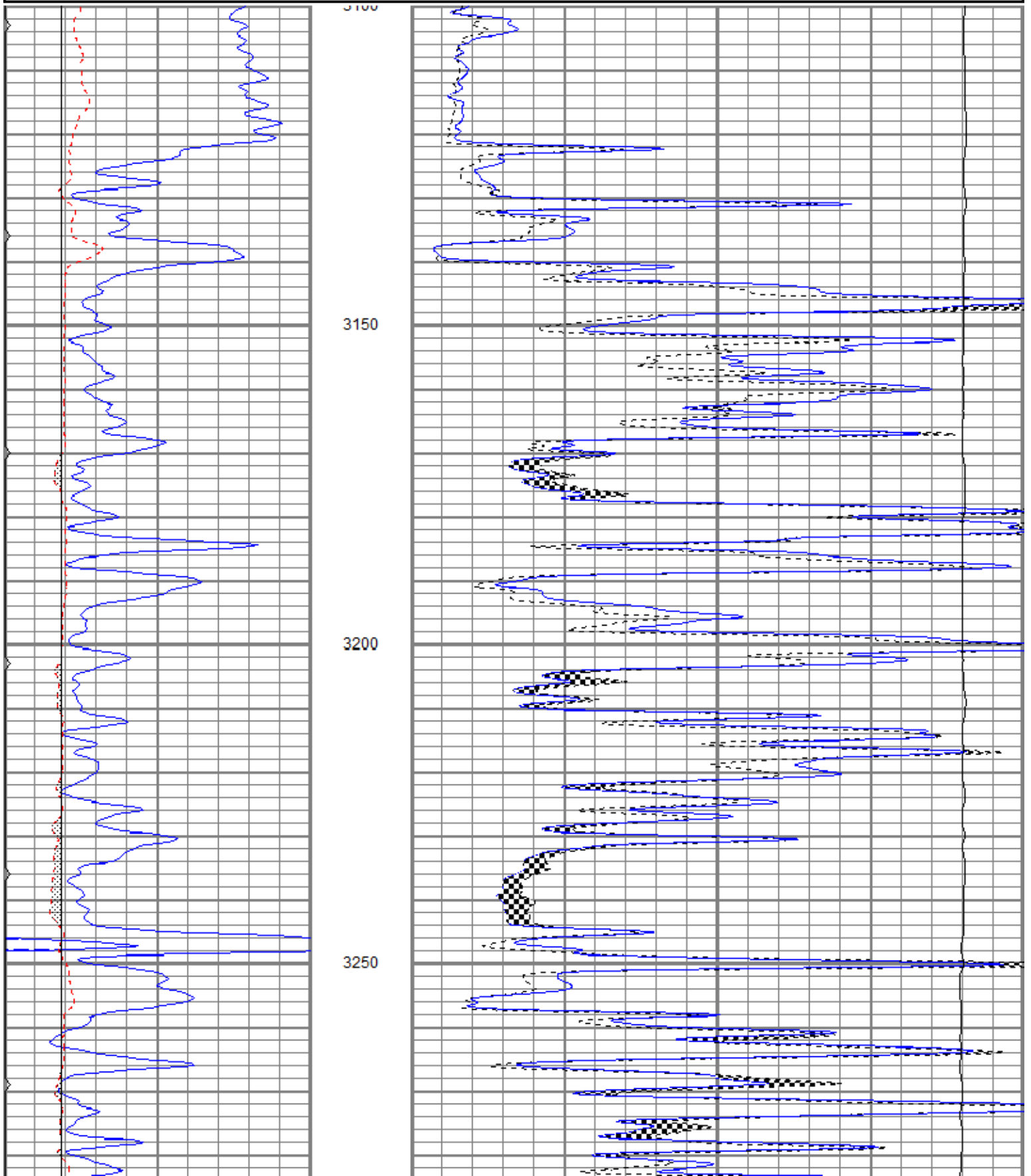


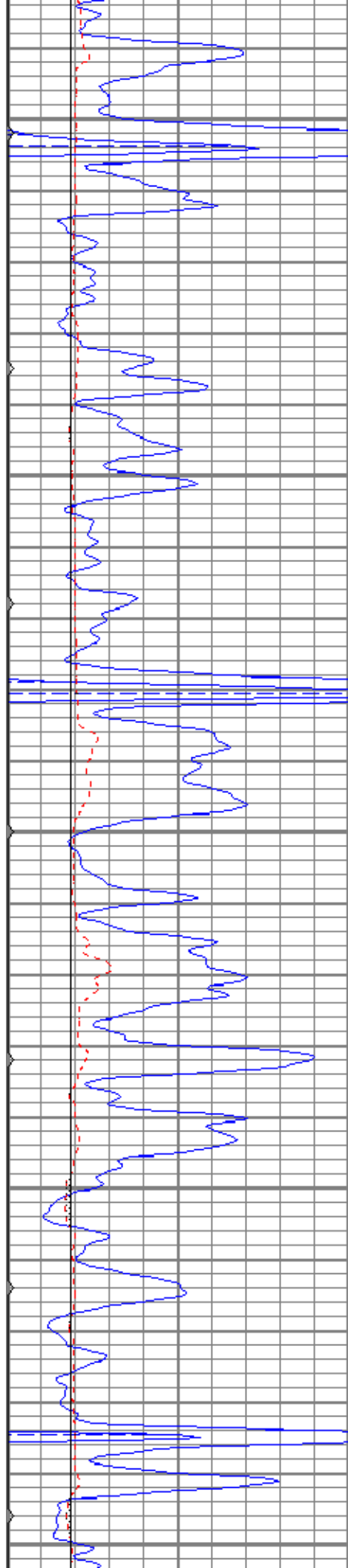
MAIN PASS

Database File jofwolf#10h.db
 Dataset Pathname pass6
 Presentation Format kml
 Dataset Creation Thu Sep 27 06:27:49 2018
 Charted by Depth in Feet scaled 1:240

0	GR (GAPI)	150
6	MCAL (in)	16
6	BOREID (in)	16
0	MINMK	50

0	MN 2" (Ohm-m)	20
0	MI 1" (Ohm-m)	20
10000	LTEN (lb)	0





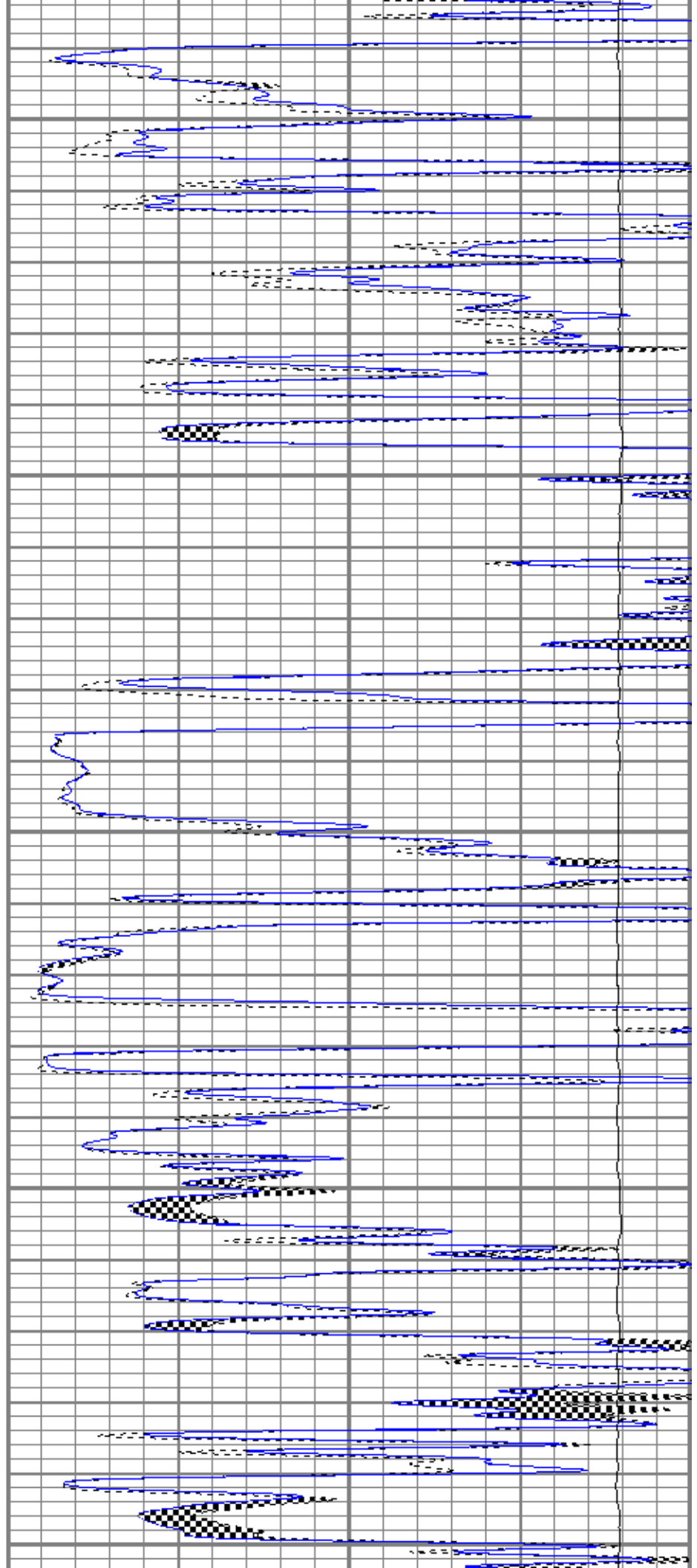
3300

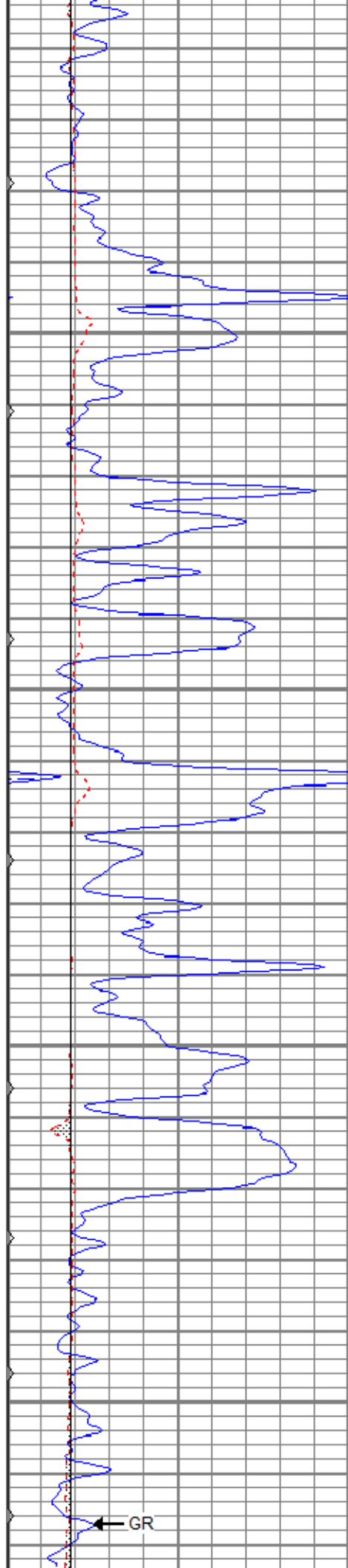
3350

3400

3450

3500



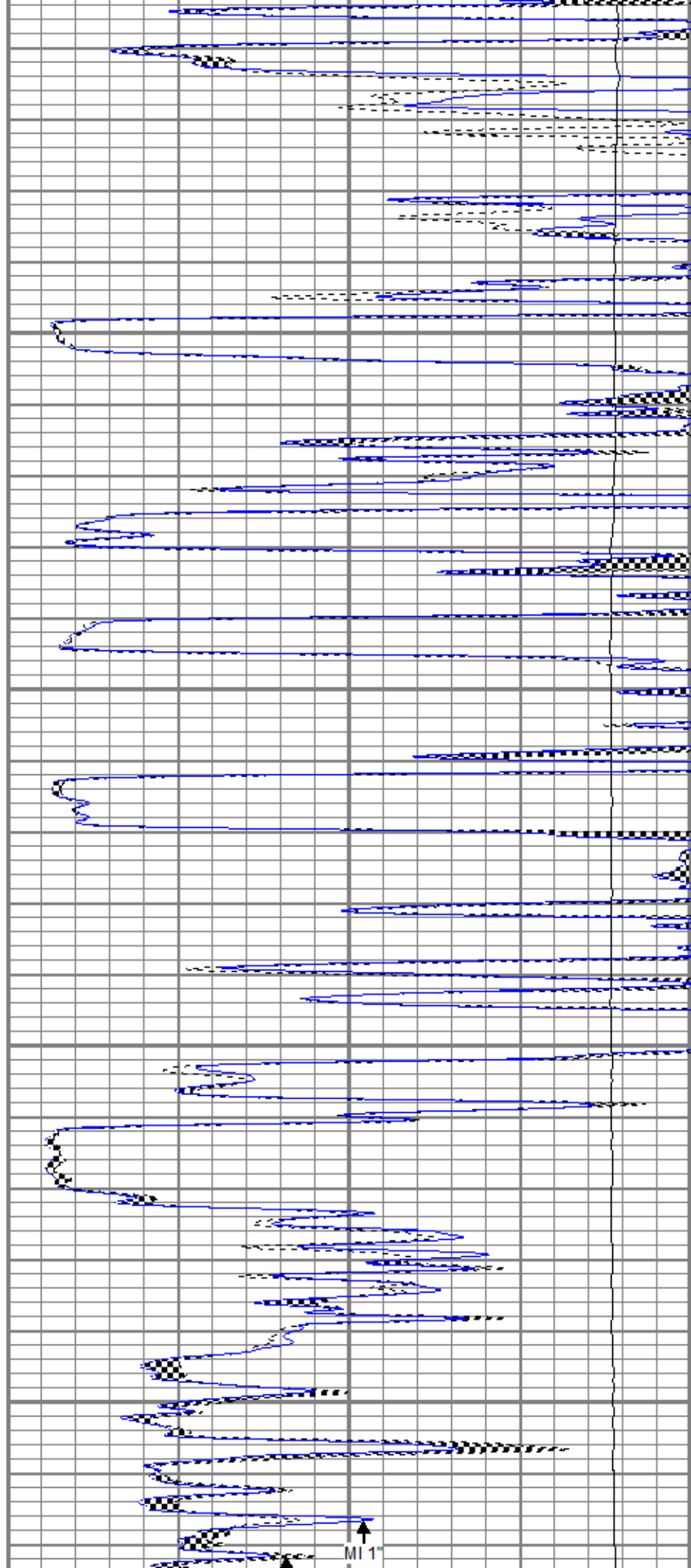


3550

3600

3650

3700



MI 1

	MCAL	
	BOREID	
0	GR (GAPI)	150
6	MCAL (in)	16
6	BOREID (in)	16
0	MINMK	50

	MN 2"	
	LTEN	
0	MN 2" (Ohm-m)	20
0	MI 1" (Ohm-m)	20
10000	LTEN (lb)	0

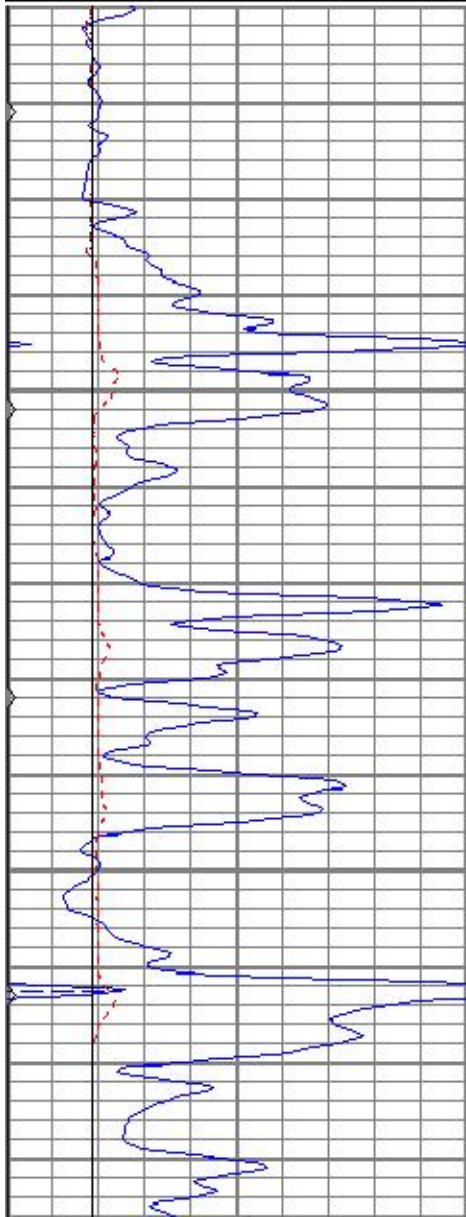


REPEAT SECTION

Database File jofwolf#1oh.db
 Dataset Pathname pass5
 Presentation Format kml
 Dataset Creation Thu Sep 27 06:16:51 2018
 Charted by Depth in Feet scaled 1:240

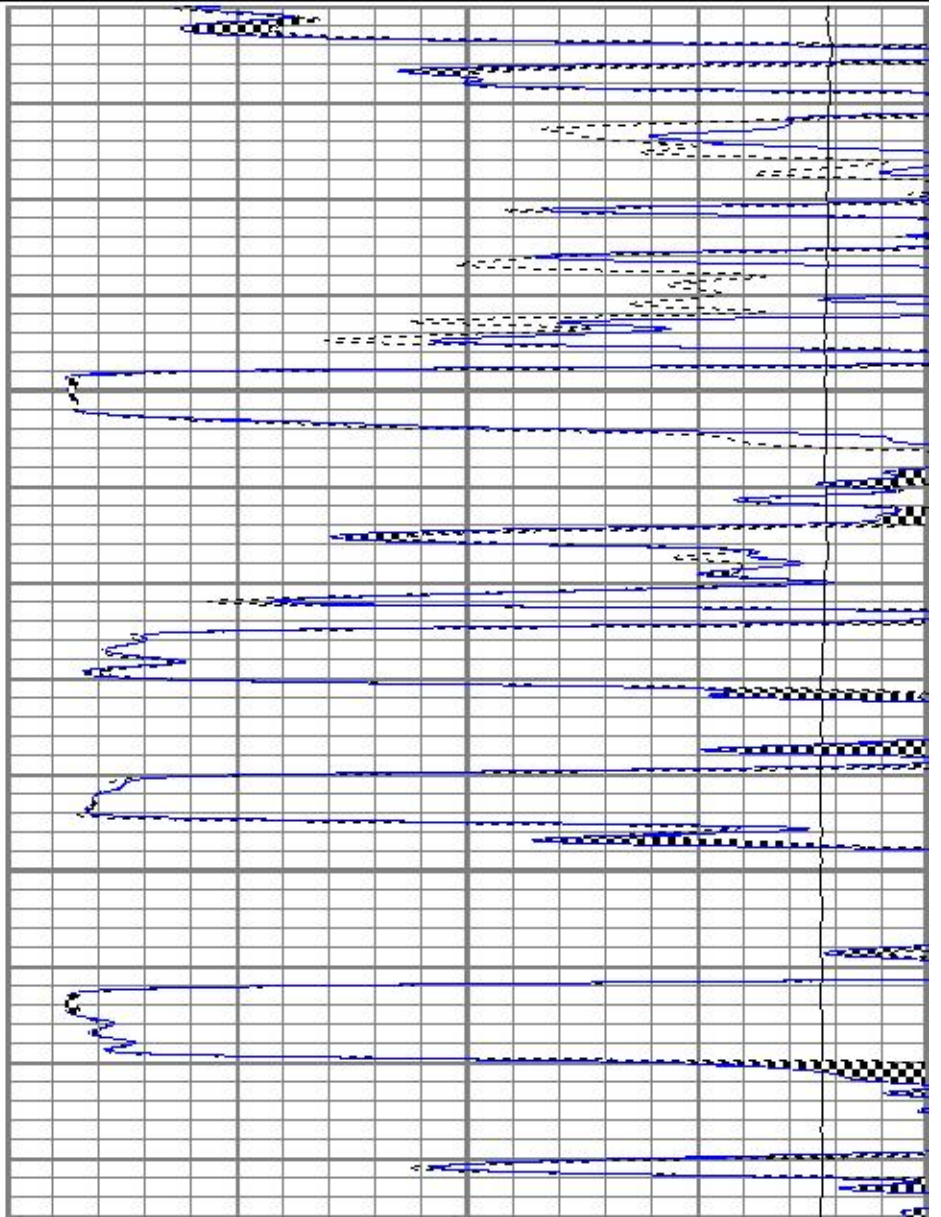
0	GR (GAPI)	150
6	MCAL (in)	16
6	BOREID (in)	16
0	MINMK	50

0	MN 2" (Ohm-m)	20
0	MI 1" (Ohm-m)	20
10000	LTEN (lb)	0



3550

3600



Sensor	Offset (ft)	Schematic	Description	Length (ft)	O.D. (in)	Weight (lb)
GR	10.63		CHD-None	0.75	1.50	5.00
MCAL	1.83		GR-OH (2001) 2001	3.56	3.25	40.00
MI	1.83		ML-Gerhart (9151)	9.46	4.00	125.00
MN	1.83		Gerhart Micro			

Dataset: jofwolf#1oh.db: field/well/run1/pass6
 Total length: 13.77 ft
 Total weight: 170.00 lb
 O.D.: 4.00 in