



**CEMENT
BOND
LOG**

Company James P Williams Enterprises, Inc.

Well Webster #2

Field Zurich Townsite South

County Rooks State KS

Location: 1655 FSL & 2309' FEL

Permanent Datum SEC 34 TWP 9S RGE 19W

Log Measured From Ground Level Elevation 2198'

Drilling Measured From KB K B 6' AGL

Other Services
Elevation
K.B. 2204'
D.F. 2203'
G.L. 2198'

Date 6-26-20

Run Number One

Depth Driller 1504'

Depth Logger 1510'

Bottom Logged Interval 1508'

Top Log Interval SURFACE

Open Hole Size 4 1/2"

Type Fluid

Density / Viscosity

Max. Recorded Temp. 111/

Estimated Cement Top 111/

Time Well Ready 3:00 p.m

Time Logger on Bottom 3:25 p.m

Equipment Number T-173

Location Hays, KS

Recorded By C.Patterson

Witnessed By Mr. James Williams

Borehole Record				Tubing Record			
Run Number	Bit	From	To	Size	Weight	From	To

Casing Record	Size	Wd/Ft	Top	Bottom
Surface String				
Prot. String				
Production String	4 1/2"	10#	0'	3706'
Liner				

<<< Fold Here >>>

All interpretations are opinions based on inferences from electrical or other measurements and we cannot and do not guarantee the accuracy or correctness of any interpretation, and we shall not, except in the case of gross or willful negligence on our part, be liable or responsible for any loss, costs, damages, or expenses incurred or sustained by anyone resulting from any interpretation made by any of our officers, agents or employees. These interpretations are also subject to our general terms and conditions set out in our current Price Schedule.

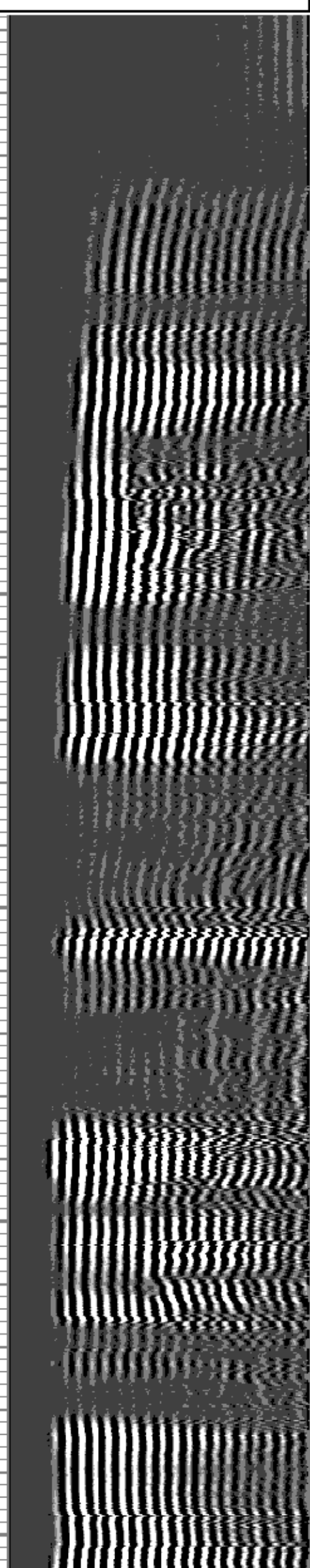
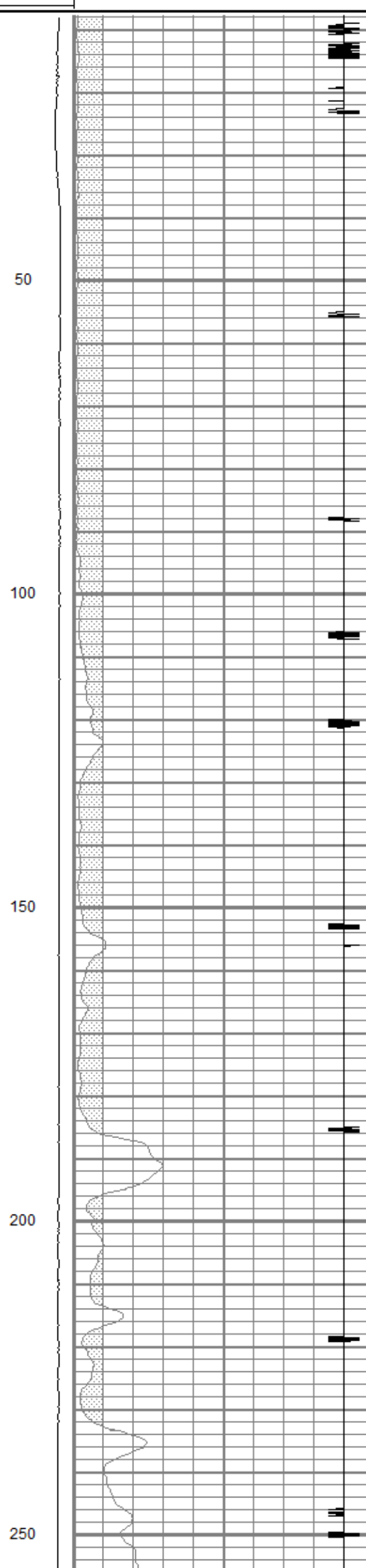
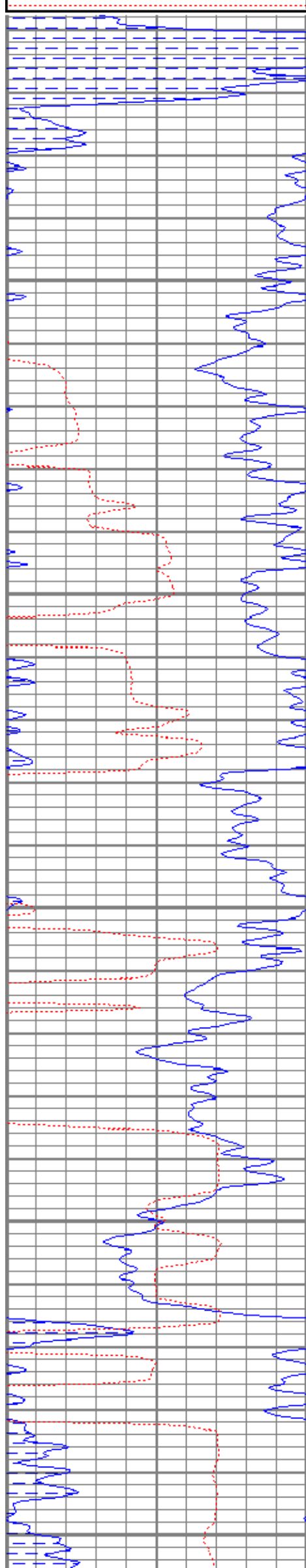
Comments

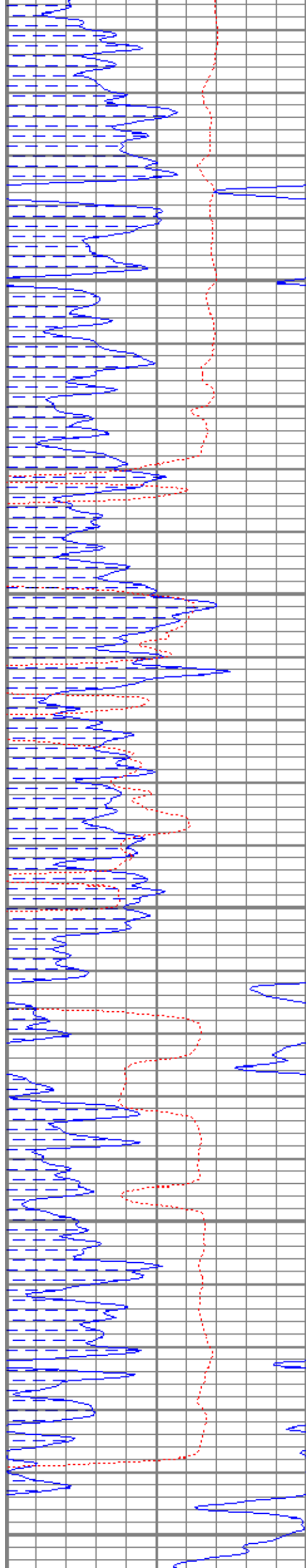


MAIN PASS

Database File jpwwebster#2cbl.db
 Dataset Pathname pass2
 Presentation Format cbl
 Dataset Creation Fri Jun 26 15:30:36 2020
 Charted by Depth in Feet scaled 1:240

0	GR (GAPI)	150	LTEN	18	CCL	-2	200	VDL (usec)	1200
150	GR (GAPI)	300	(lb)	0	AMP3FT (mV)	100			
400	TT3FT (usec)	200	1200	-200					





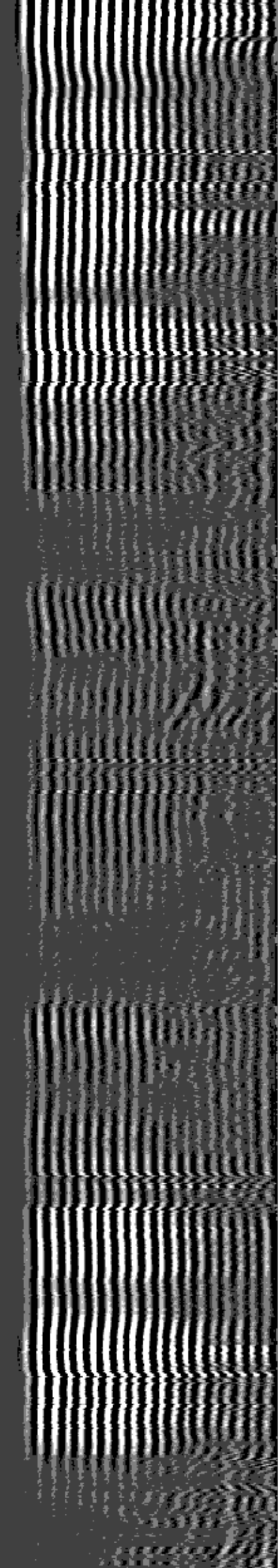
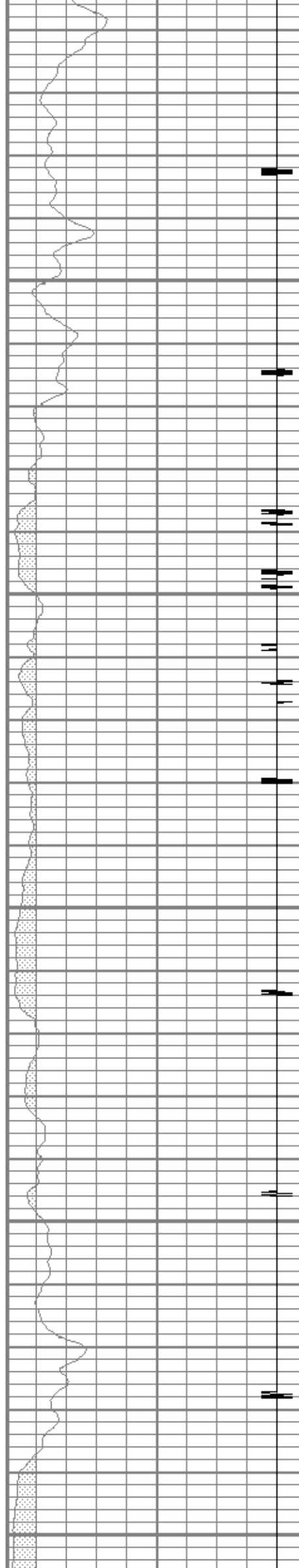
300

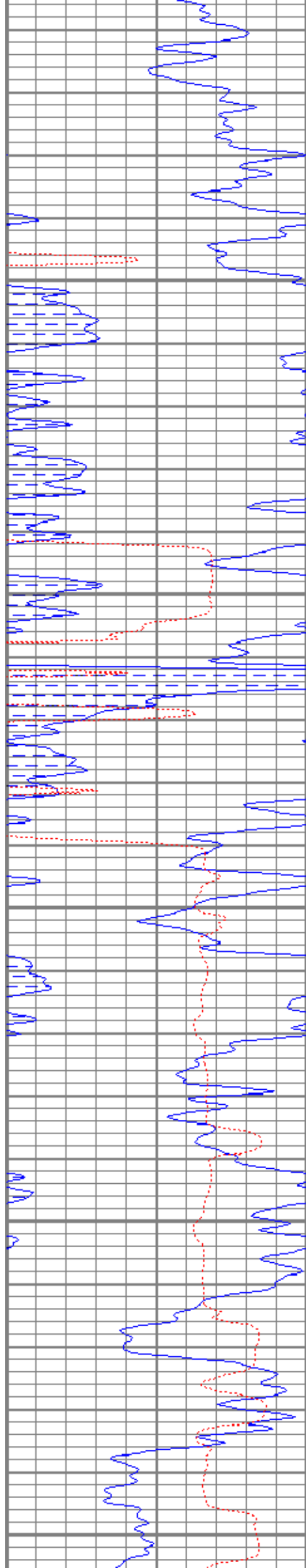
350

400

450

500





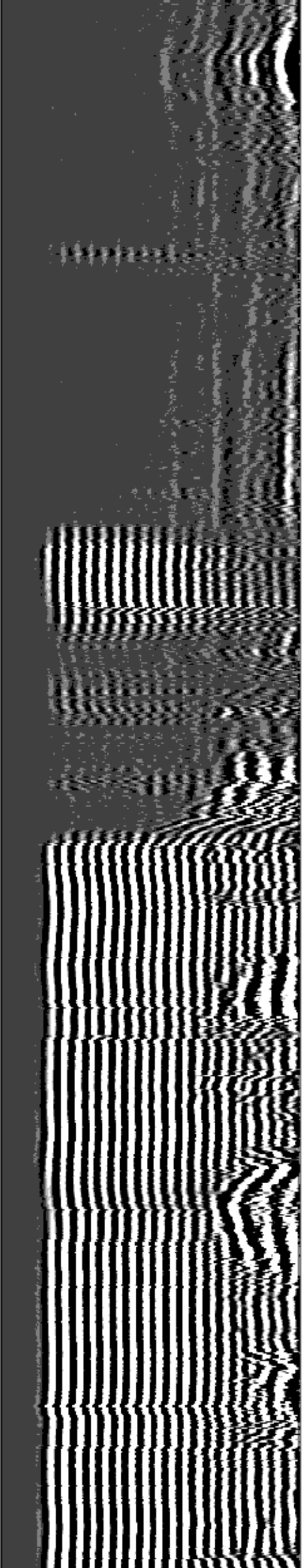
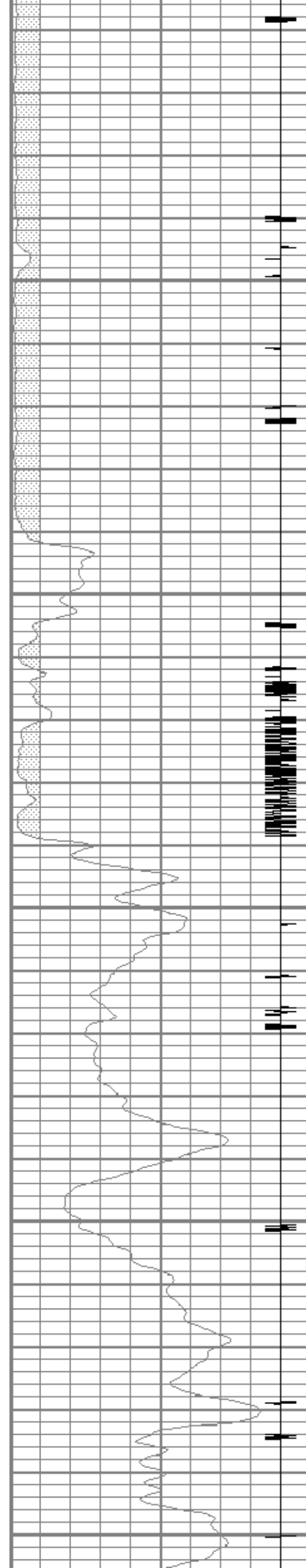
550

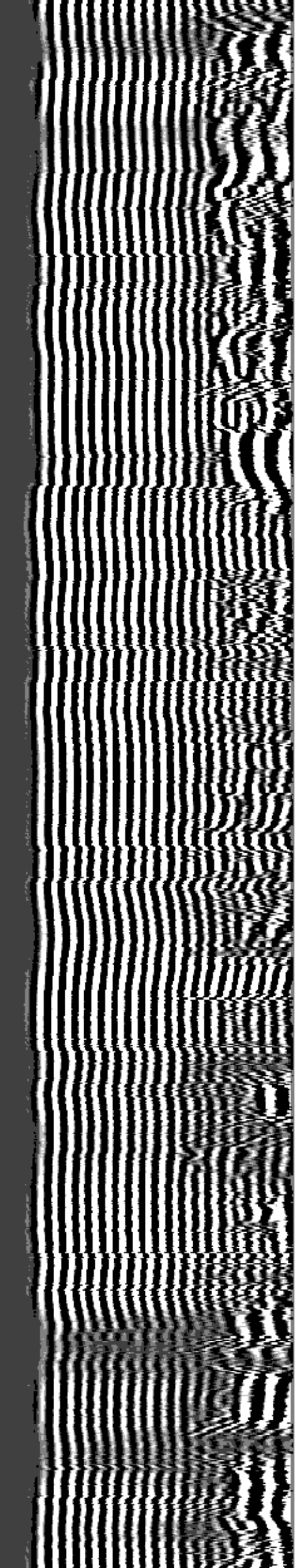
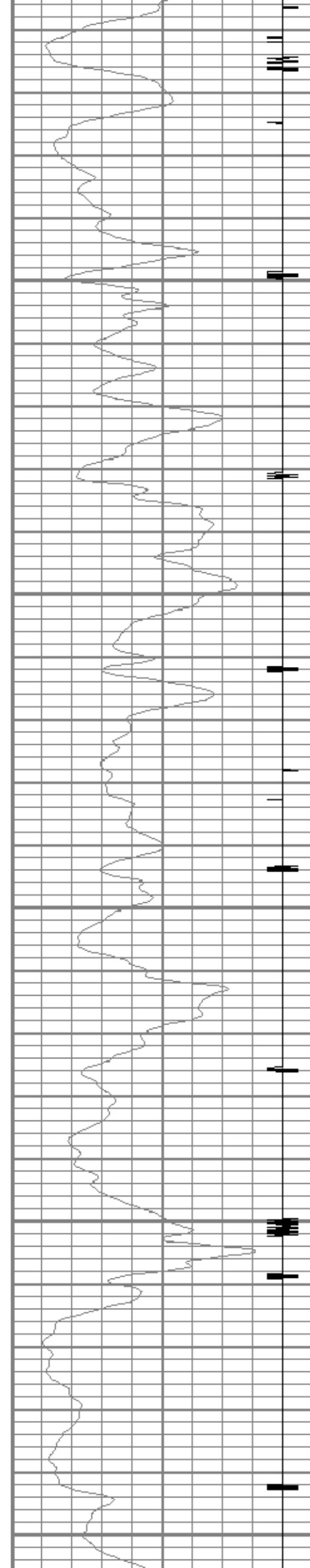
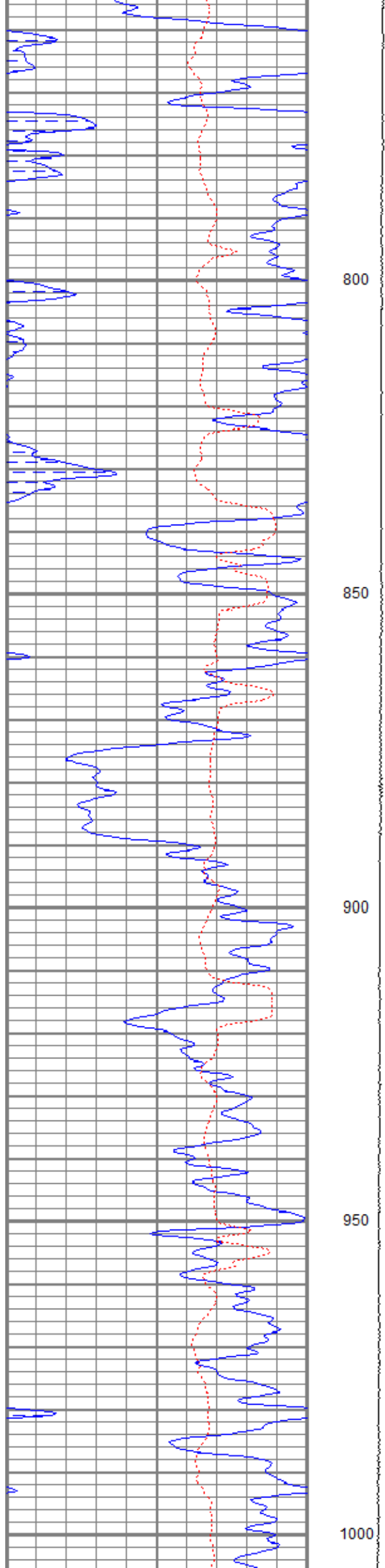
600

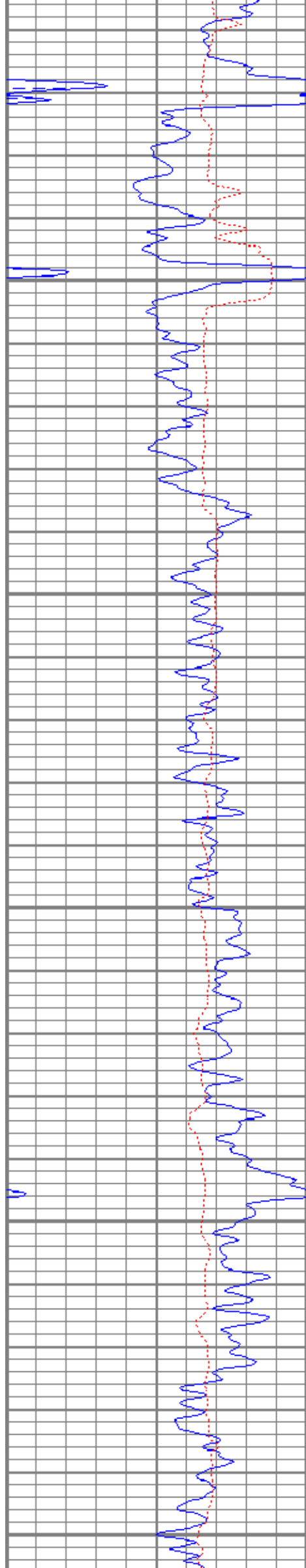
650

700

750







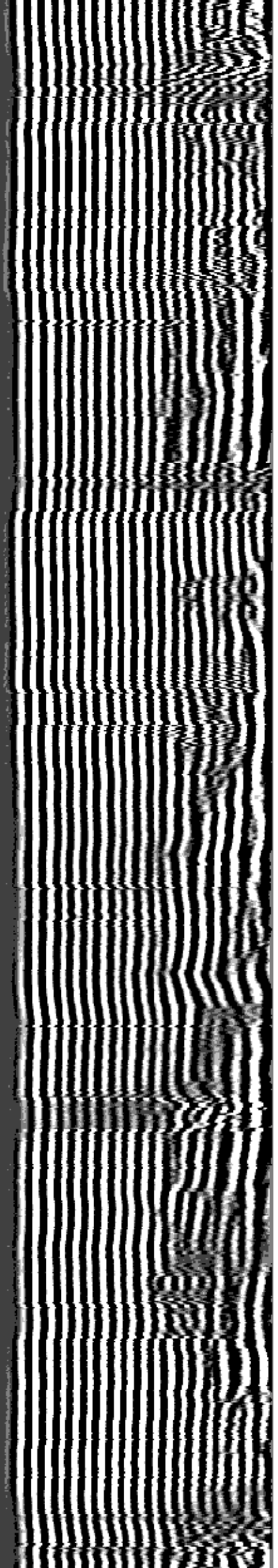
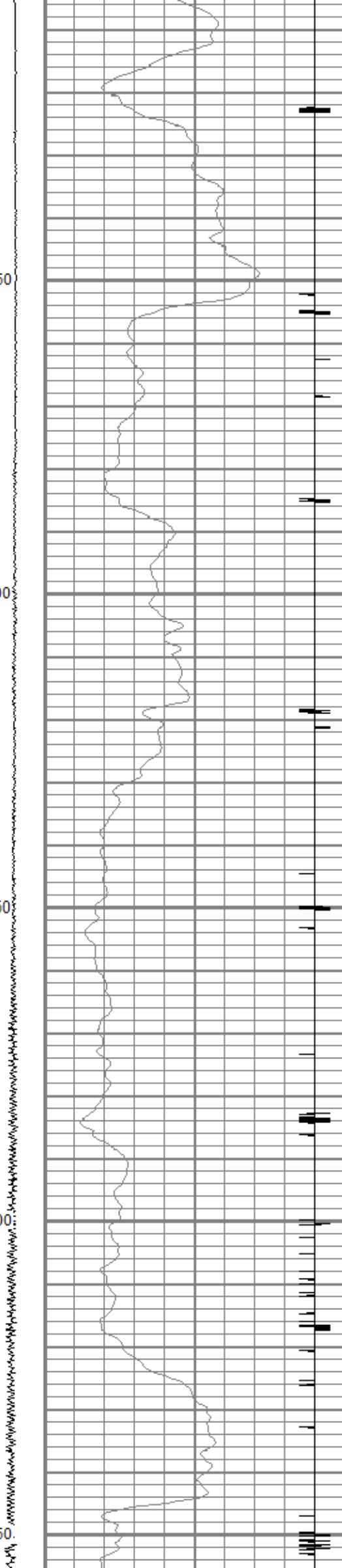
1050

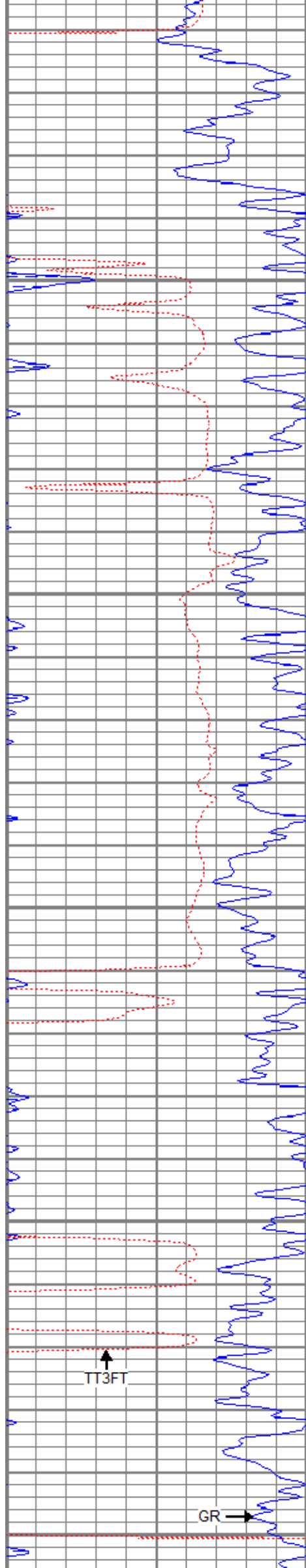
1100

1150

1200

1250





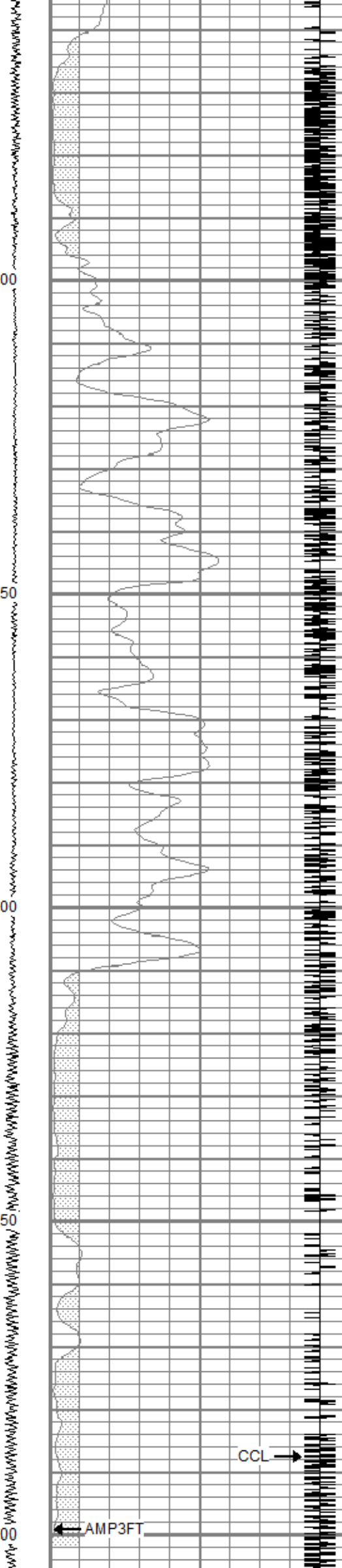
1300

1350

1400

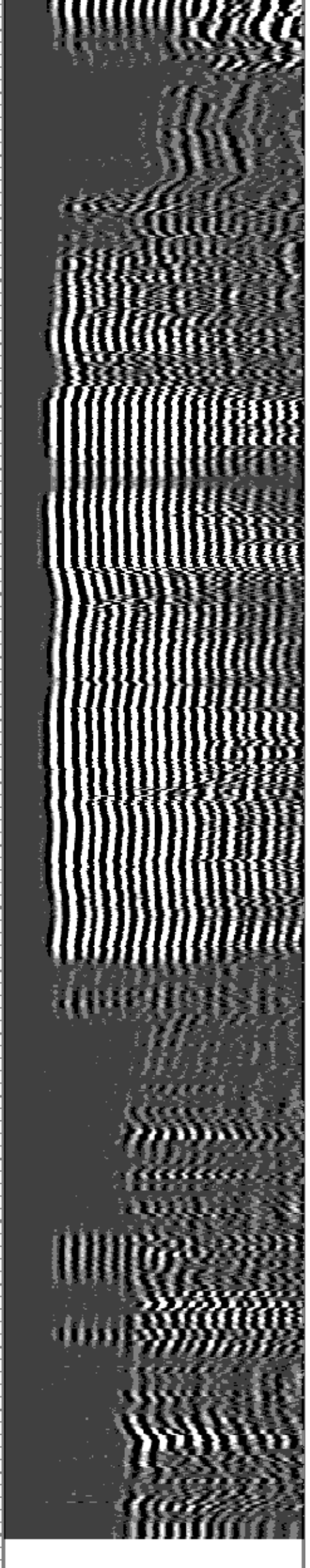
1450

1500



CCL

AMP3FT



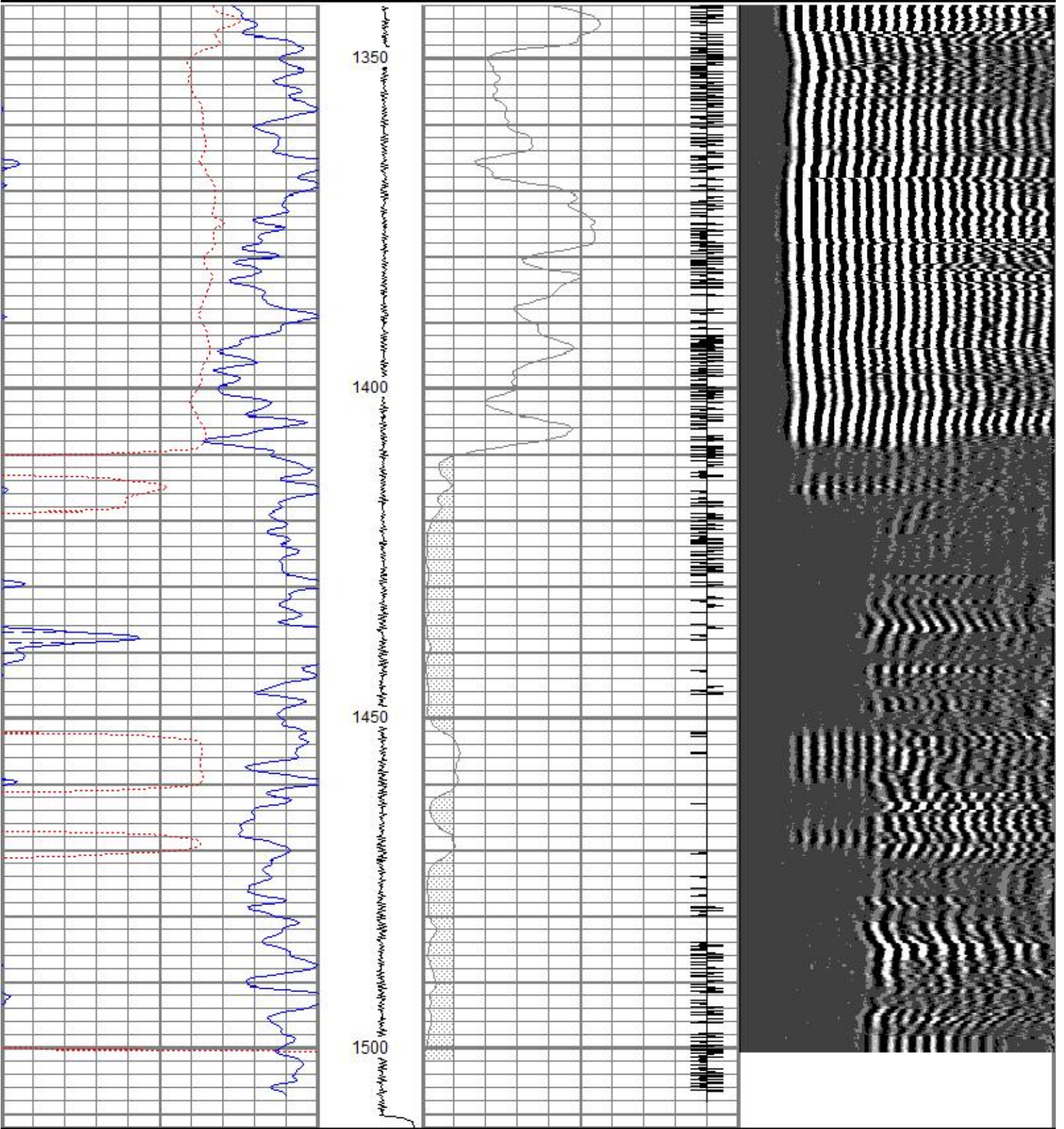
0	GR (GAPI)	150	LTEN	18	CCL	-2	200	VDL (usec)	1200
150	GR (GAPI)	300	(lb)	0	AMP3FT (mV)	100			
400	TT3FT (usec)	200	1200 -200						



REPEAT SECTION

Database File jpwwebster#2cbl.db
 Dataset Pathname pass1
 Presentation Format cbl
 Dataset Creation Fri Jun 26 15:24:22 2020
 Charted by Depth in Feet scaled 1:240

0	GR (GAPI)	150	LTEN	18	CCL	-2	200	VDL (usec)	1200
150	GR (GAPI)	300	(lb)	0	AMP3FT (mV)	100			
400	TT3FT (usec)	200	1200 -200						



0	GR (GAPI)	150	LTEN	18	CCL	-2	200	VDL (usec)	1200
150	GR (GAPI)	300	(lb)	0	AMP3FT (mV)		100		
400	TT3FT (usec)	200	1200	-200					

Database File		jpwwebster#2cbl.db		Calibration Report			
Dataset Pathname		pass2					
Dataset Creation		Fri Jun 26 15:30:36 2020					

Gamma Ray Calibration Report			
Serial Number:	080224		
Tool Model:	Probe1		
Performed:	Thu Dec 05 12:56:22 2019		
Calibrator Value:	200.0	GAPI	
Background Reading:	15.0	cps	
Calibrator Reading:	222.7	cps	
Sensitivity:	1.4000	GAPI/cps	

Segmented Cement Bond Log Calibration Report			
Serial Number:	061007		
Tool Model:	DigitalCBL		
Calibration Casing Diameter:	5.500	in	
Calibration Depth:	2260.167	ft	

Master Calibration, performed Fri Jun 26 15:19:51 2020:						
	Raw (v)		Calibrated (mv)		Results	
	Zero	Cal	Zero	Cal	Gain	Offset
3'	0.066	0.822	1.000	71.921	93.828	-5.212
CAL						
5'	0.071	0.371	1.000	71.921	236.298	-15.721
SUM						
S1						
S2						
S3						
S4						
S5						
S6						
S7						
S8						

Internal Reference Calibration, performed (Not Performed):						
	Raw (v)		Calibrated (v)		Results	
	Zero	Cal	Zero	Cal	Gain	Offset
CAL						

Air Zero Calibration, performed Thu Mar 01 12:10:51 2018:						
	Raw (v)		Calibrated (v)		Results	
	Zero		Zero			Offset
3'	0.000		0.000			0.000
5'	0.000		0.000			0.000
SUM						
S1						
S2						
S3						
S4						
S5						
S6						
S7						
S8						

Sensor	Offset (ft)	Schematic	Description	Length (ft)	O.D. (in)	Weight (lb)
--------	-------------	-----------	-------------	-------------	-----------	-------------

Code	Length (ft)	Comments	Description	Length (ft)	O.D. (in)	Weight (lb)
CENT	19.14		CENT-275 2 3/4" Centralizer	2.94	2.75	10.00
WVF5FT WVF3FT	11.69 11.69		Probedig-DigitalCBL (061007) 2 3/4" Bond Tool	8.77	2.75	92.00
CENT	7.44		CENT-275 2 3/4" Centralizer	2.94	2.75	10.00
CCL	3.67		CCL-Probe (080224)	1.42	2.75	20.00
GR	2.30		GR-Probe1 (080224)	3.08	2.75	40.00

Dataset: jpwwebster#2cbl.db: field/well/run1/pass2
 Total length: 19.14 ft
 Total weight: 172.00 lb
 O.D.: 2.75 in