



**DUAL INDUCTION
LL3/GR LOG**

Company LONE WOLF OIL & GAS CO., LLC.
Well SCHULE # 3
Field
County ELK
State KANSAS

Company LONE WOLF OIL & GAS CO., LLC.
Well SCHULE # 3
Field
County ELK State KANSAS

Location: API #: 15-049-22623-0000
SW SE NE SE
1540' FSL & 390' FEL
SEC 35 TWP 30S RGE 9E
Permanent Datum GL Elevation 1298'
Log Measured From KB
Drilling Measured From KB
Other Services
Elevation
K.B. 1307'
D.F. 1306'
G.L. 1298'

Date	4-30-2019
Run Number	ONE
Depth Driller	1195'
Depth Logger	1184'
Bottom Logged Interval	1182'
Top Log Interval	SURFACE
Casing Driller	8 5/8" @ 40'
Casing Logger	8 5/8" @ 40'
Bit Size	7 7/8"
Type Fluid in Hole	CHEMICAL
Density / Viscosity	9.1 / 40
pH / Fluid Loss	10.2 / 9.8
Source of Sample	FLOWLINE
Rm @ Meas. Temp	2.20 @ 85
Rmt @ Meas. Temp	2.64 @ 85
Rmc @ Meas. Temp	1.91 @ 85
Source of Rmf / Rmc	CAL
Rm @ BHT	1.49 @ 97
Time Circulation Stopped	4:30 PM
Time Logger on Bottom	6:00 PM
Maximum Recorded Temperature	97
Equipment Number	OW2
Location	HOMINY, OK
Recorded By	W. LOWERY
Witnessed By	MR. WOLF

<<< Fold Here >>>

All interpretations are opinions based on inferences from electrical or other measurements and we cannot and do not guarantee the accuracy or correctness of any interpretation, and we shall not, except in the case of gross or willful negligence on our part, be liable or responsible for any loss, costs, damages, or expenses incurred or sustained by anyone resulting from any interpretation made by any of our officers, agents or employees. These interpretations are also subject to our general terms and conditions set out in our current Price Schedule.

Comments

**OW2-9284
CREW : M. KIDD**

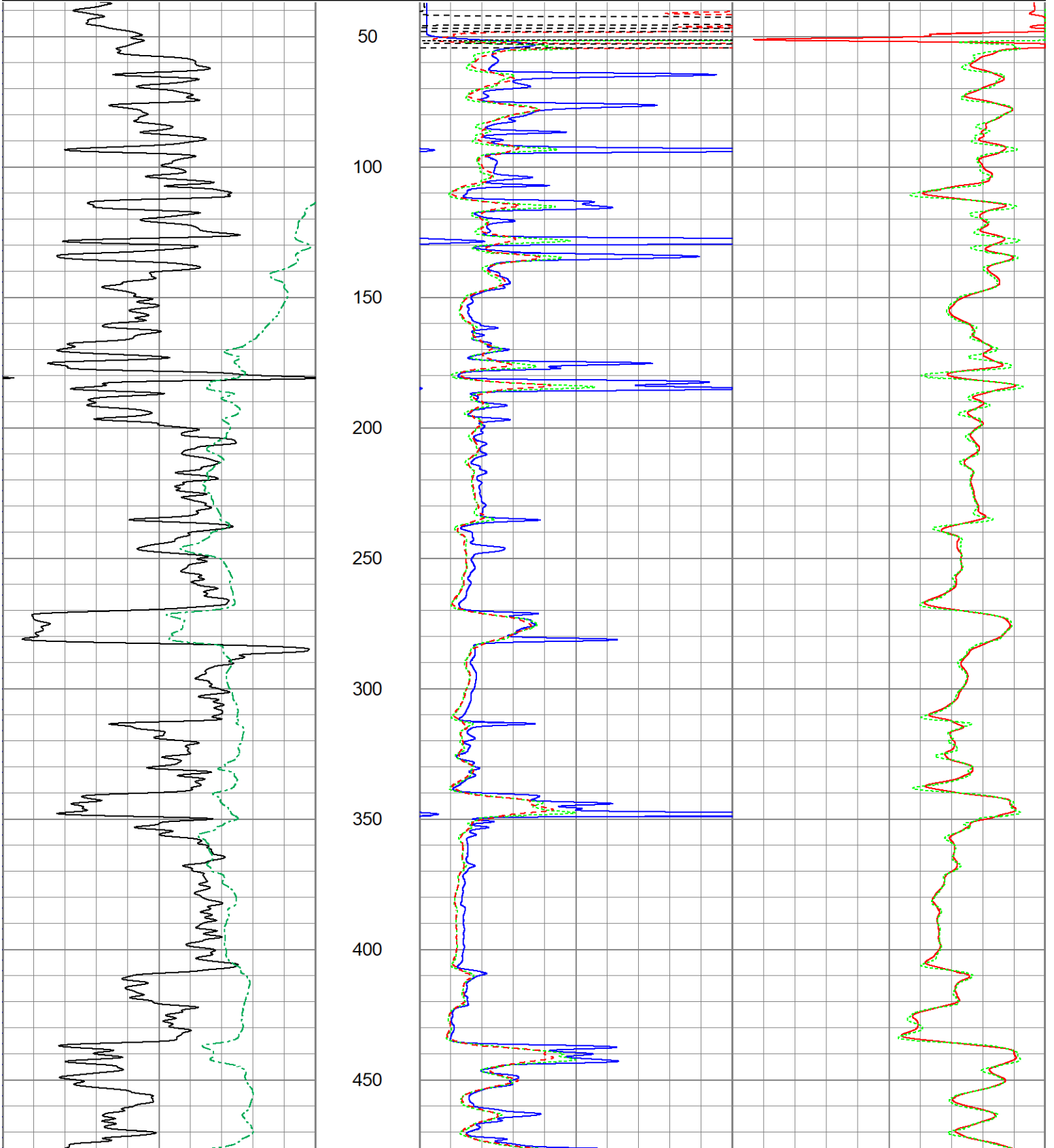


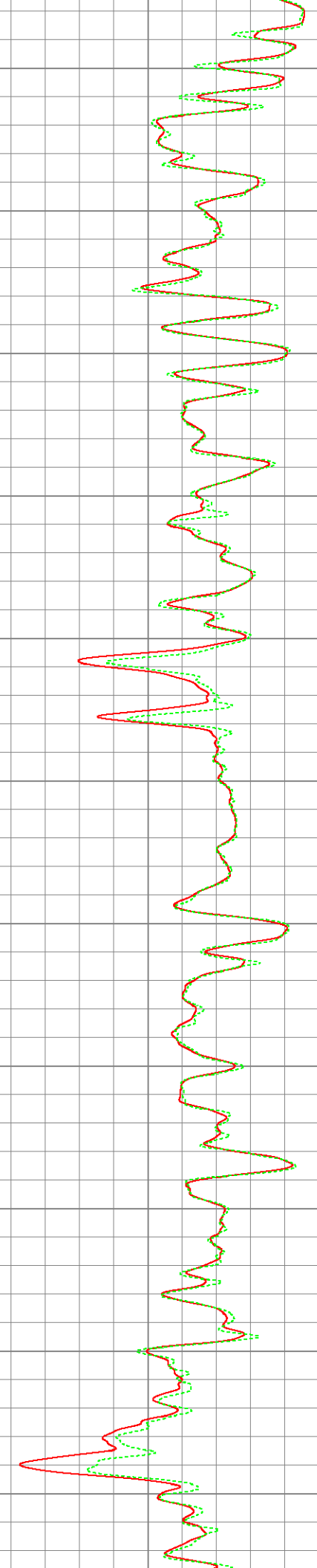
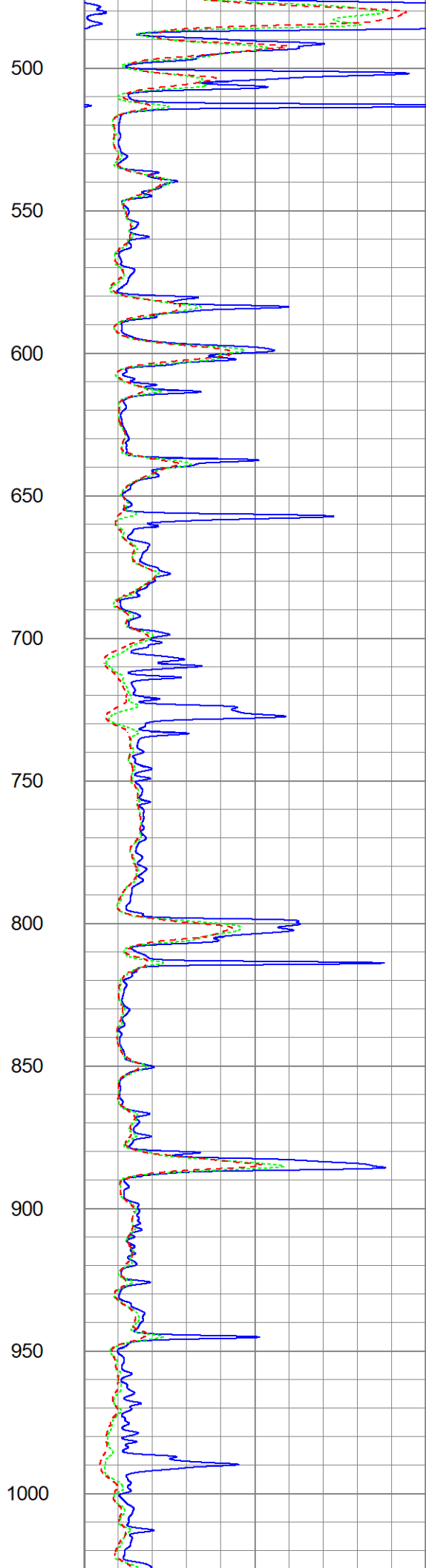
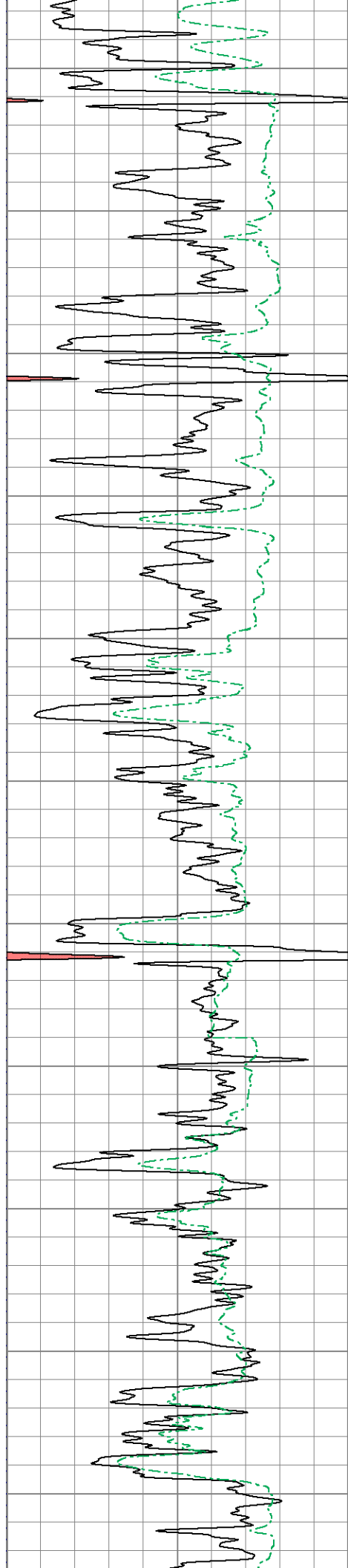
2" DIL SECTION

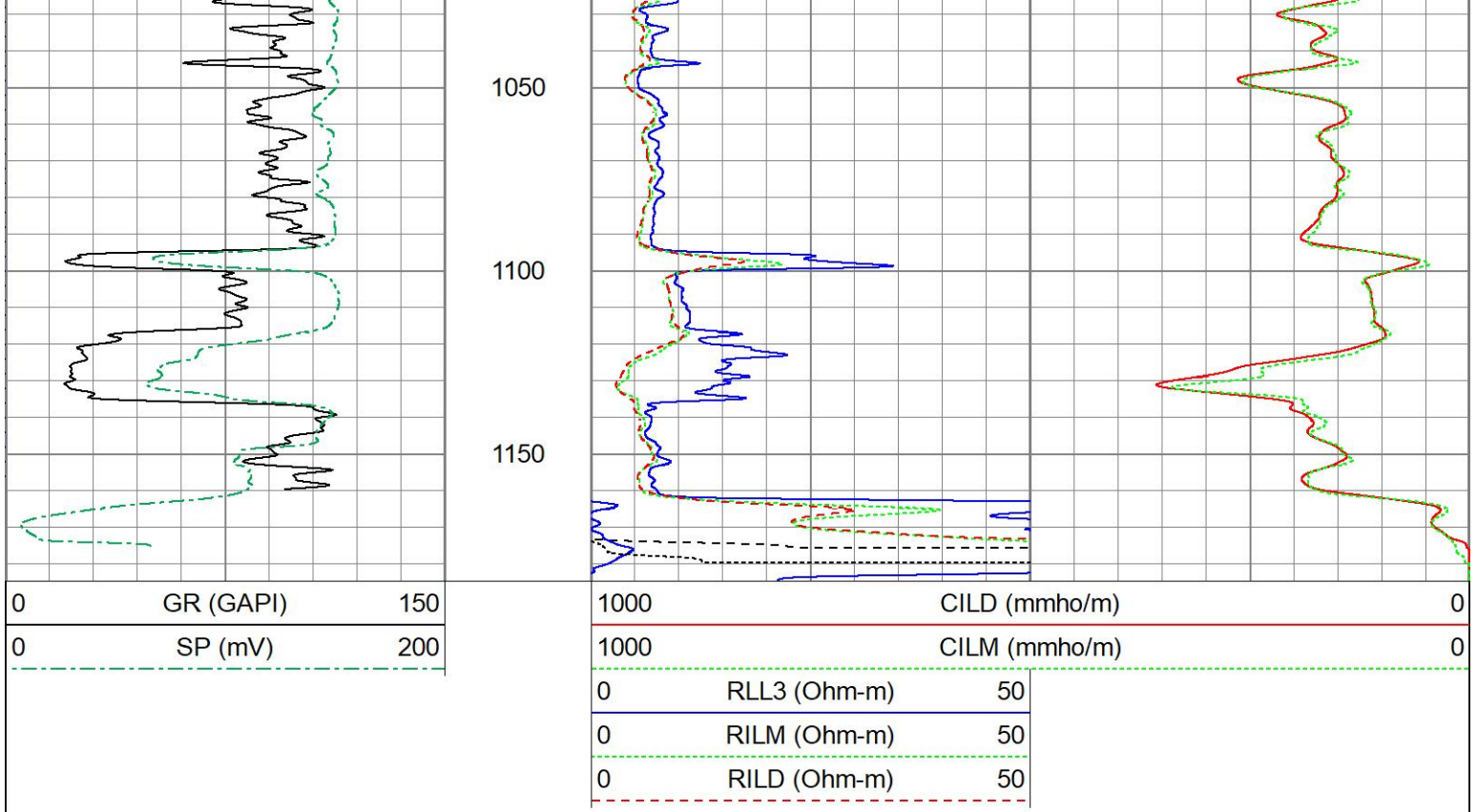
Database File ow2-9284 lone wolf.db
 Dataset Pathname DILGR/pass1.5
 Presentation Format dil2mdcol
 Dataset Creation Thu Jun 18 18:13:16 2020
 Charted by Depth in Feet scaled 1:600

0	GR (GAPI)	150
0	SP (mV)	200

1000	CILD (mmho/m)	0
1000	CILM (mmho/m)	0
0	RLL3 (Ohm-m)	50
0	RILM (Ohm-m)	50
0	RILD (Ohm-m)	50



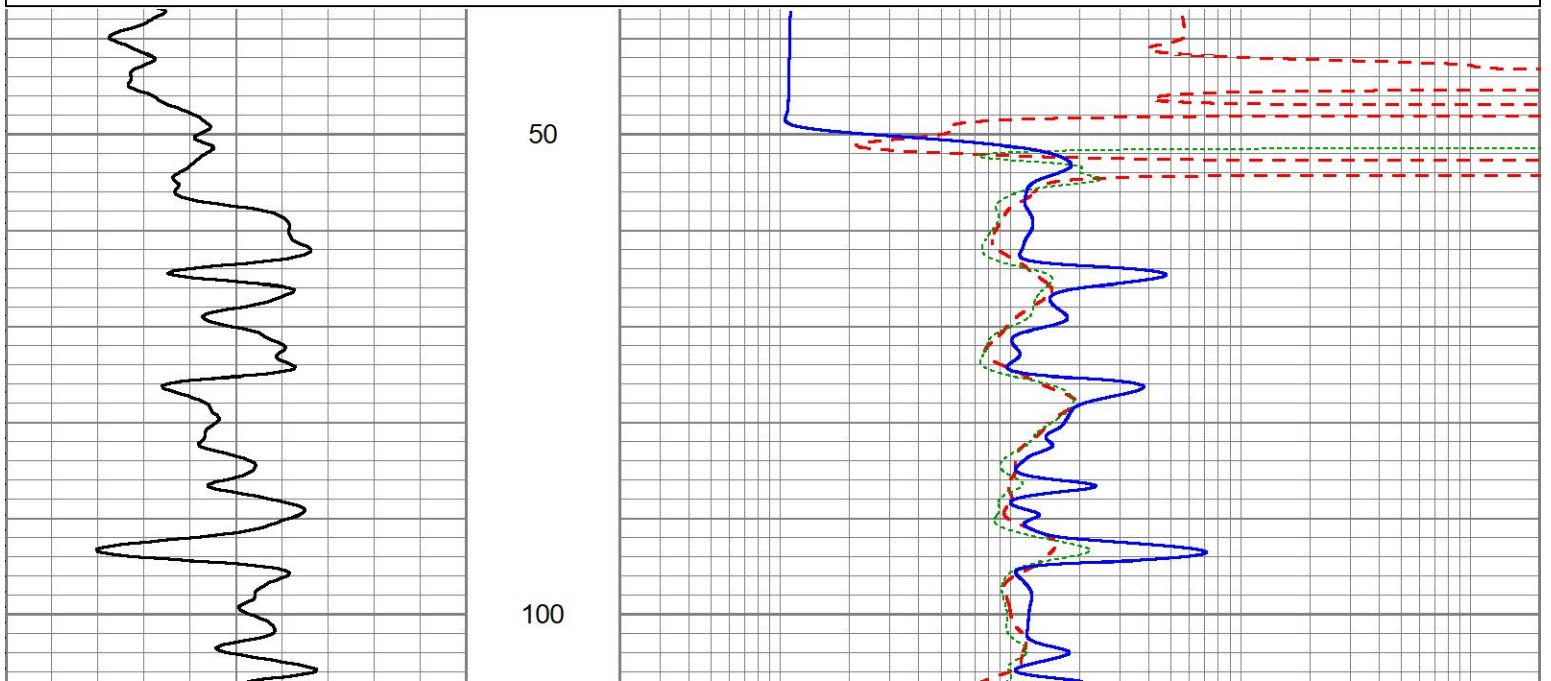


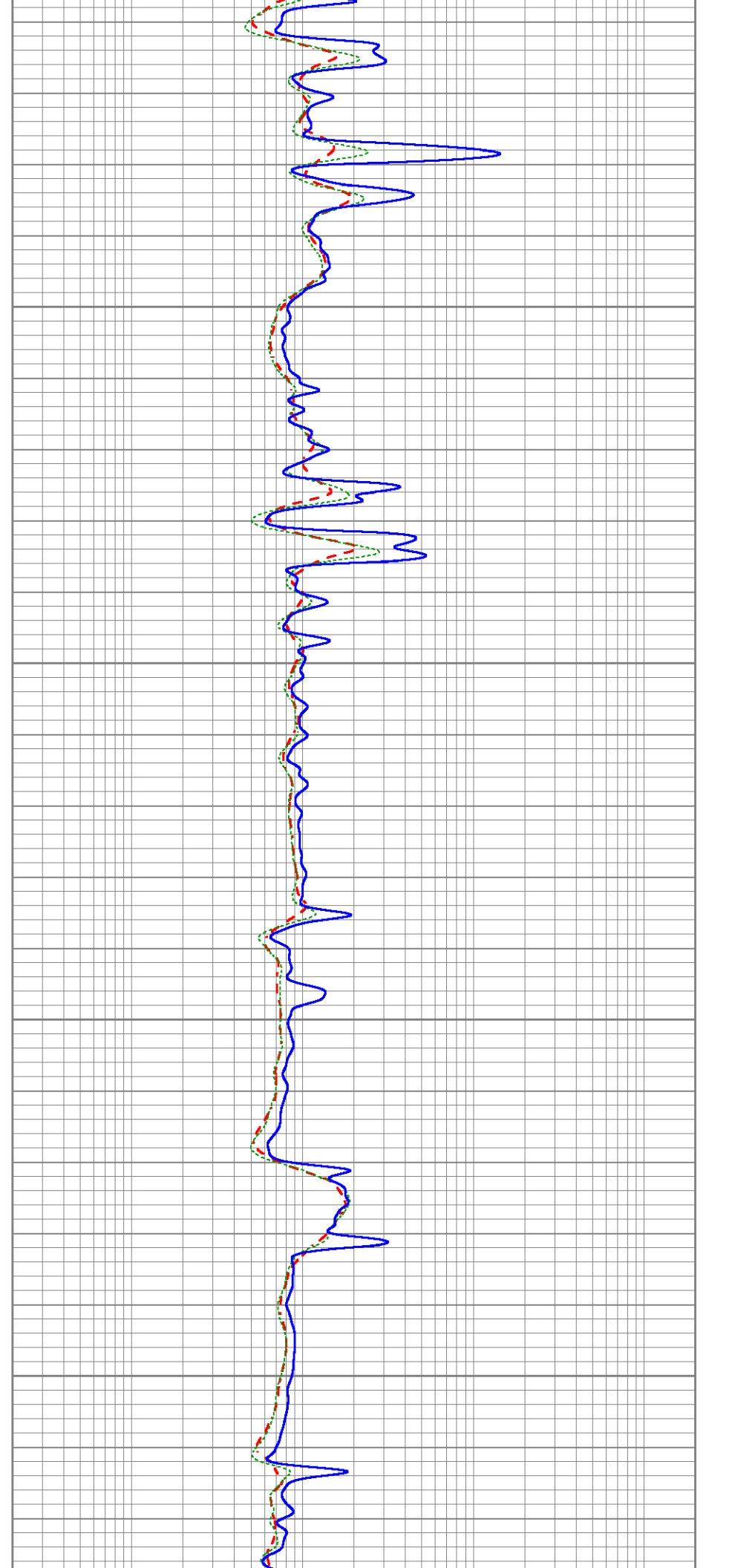
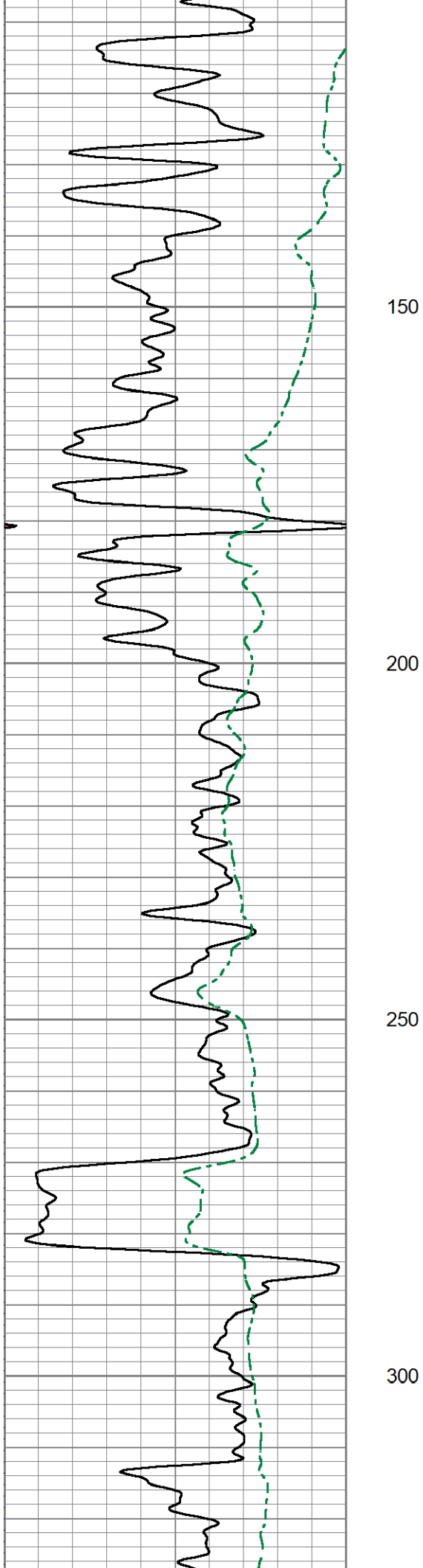


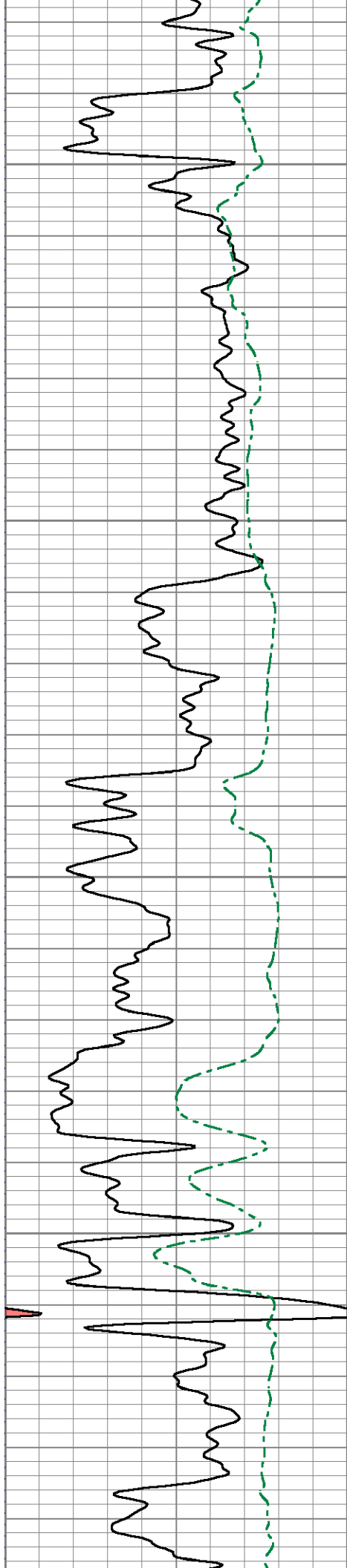
5" DIL SECTION

Database File ow2-9284 lone wolf.db
 Dataset Pathname DILGR/pass1.4
 Presentation Format dil5mdcol
 Dataset Creation Thu Jun 18 18:13:08 2020
 Charted by Depth in Feet scaled 1:240

0	Gamma Ray (GAPI)	150	0.2	Deep Resistivity (Ohm-m)	2000
0	SP (mV)	200	0.2	Medium Resistivity (Ohm-m)	2000
			0.2	Shallow Resistivity (Ohm-m)	2000





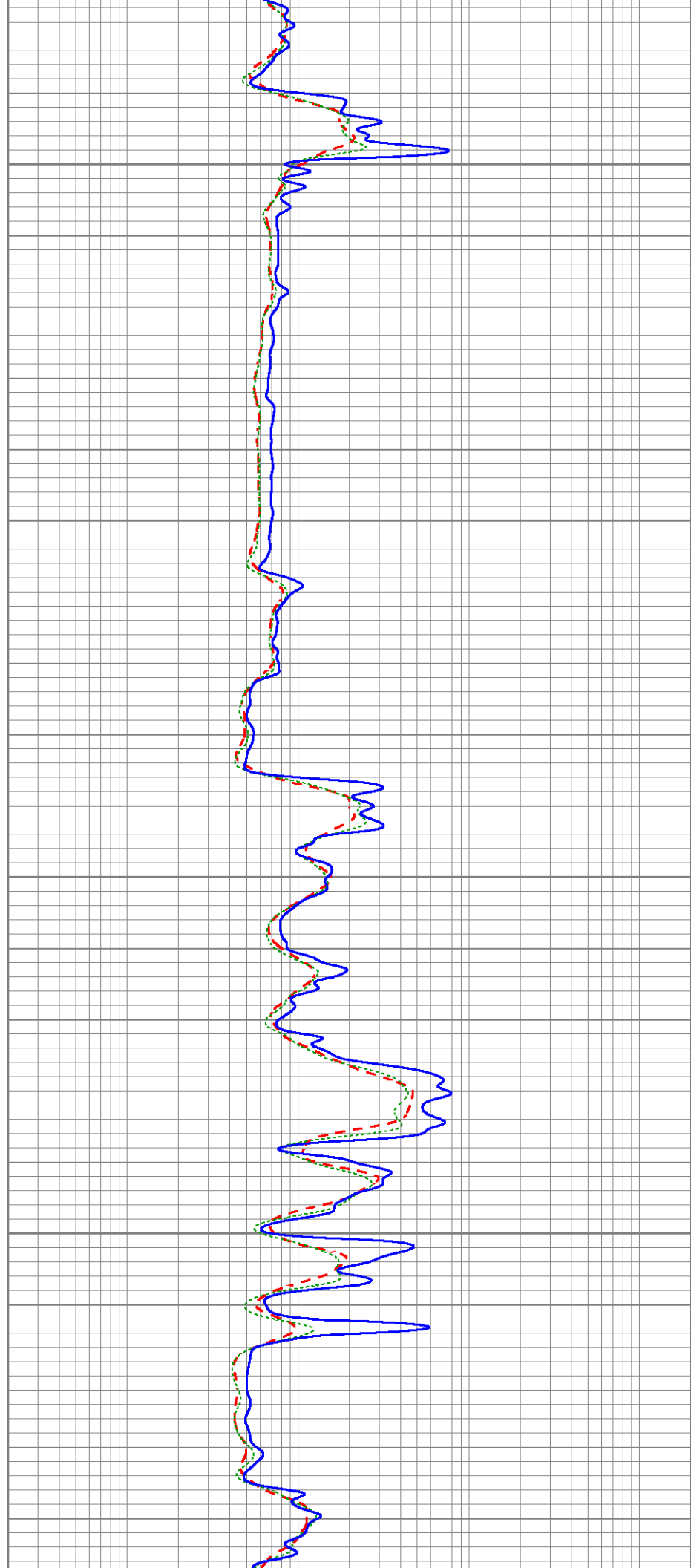


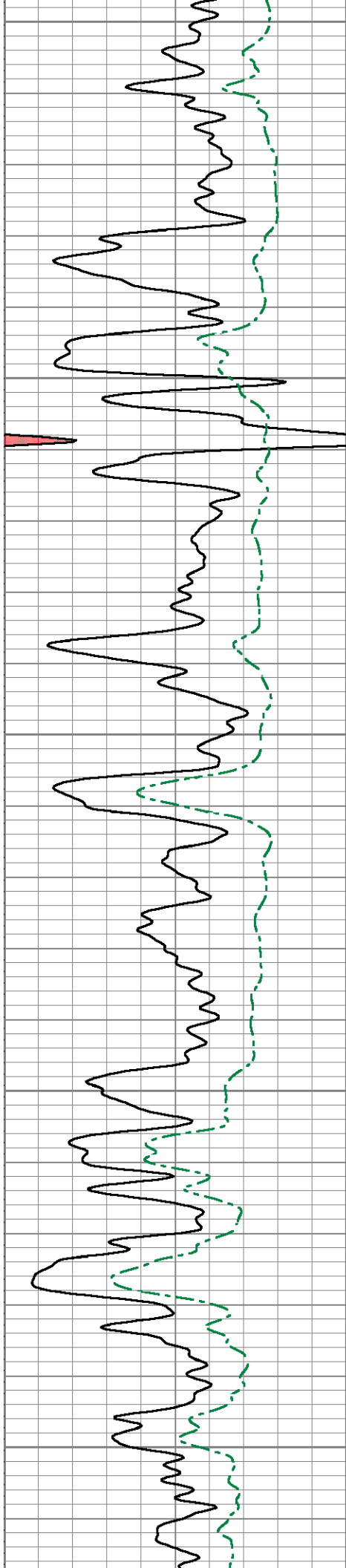
350

400

450

500





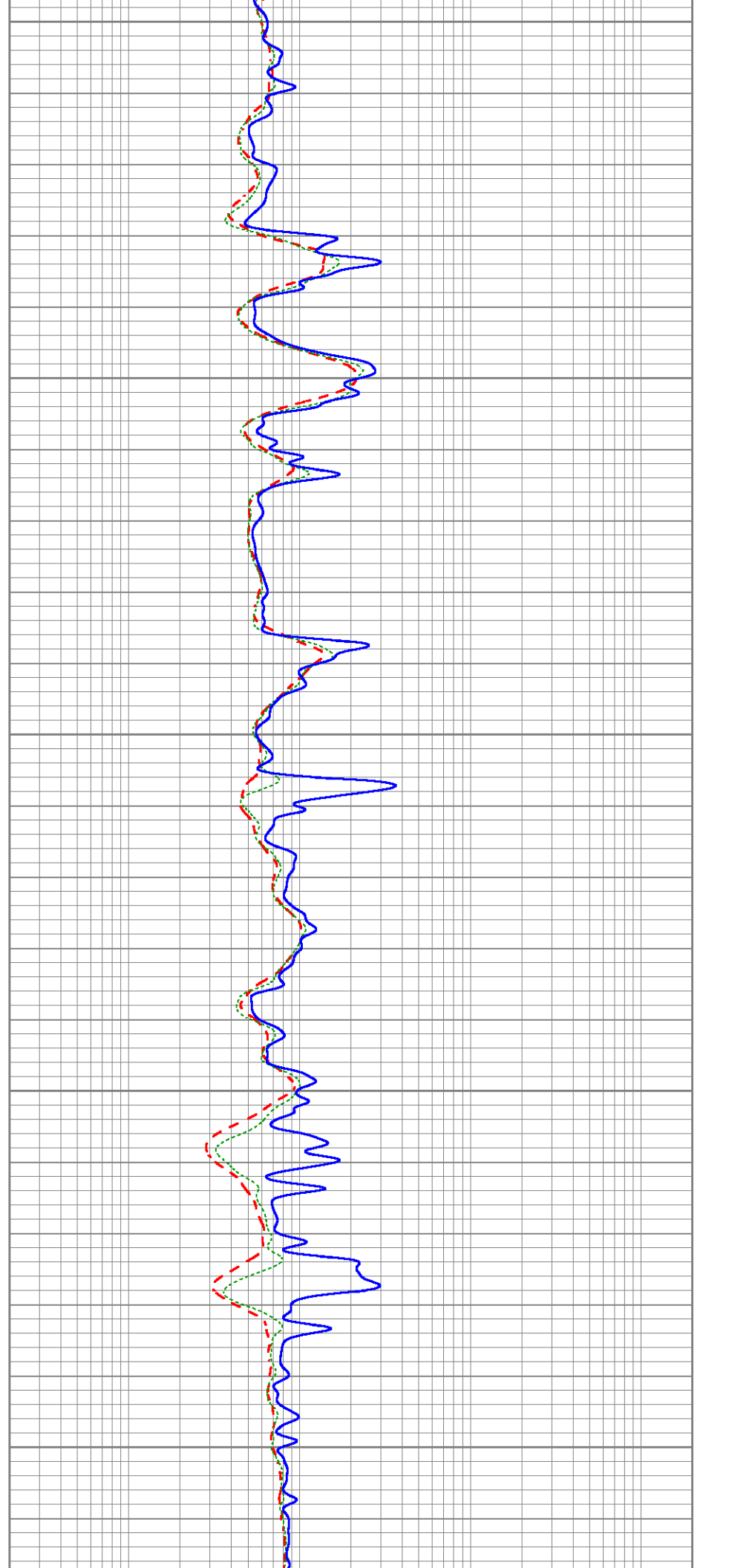
550

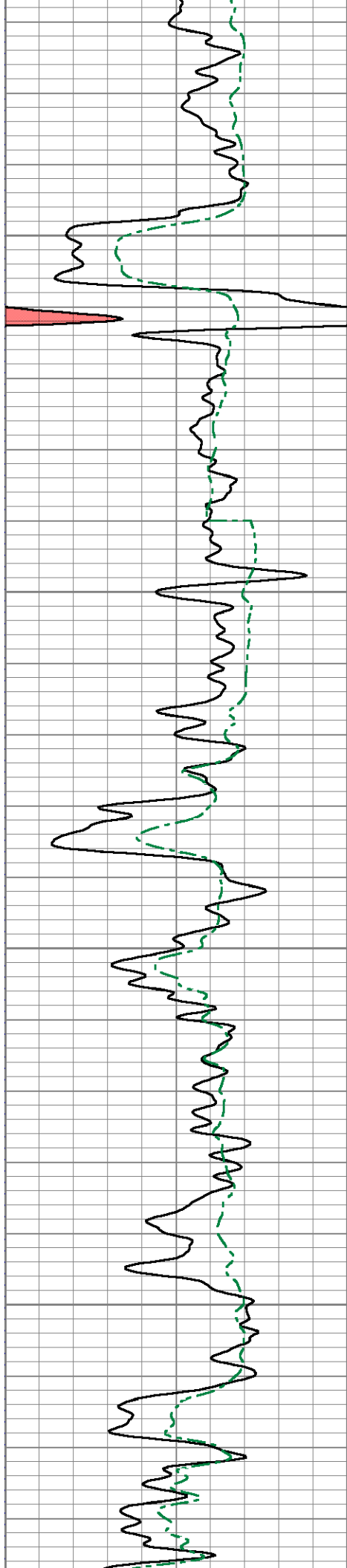
600

650

700

750



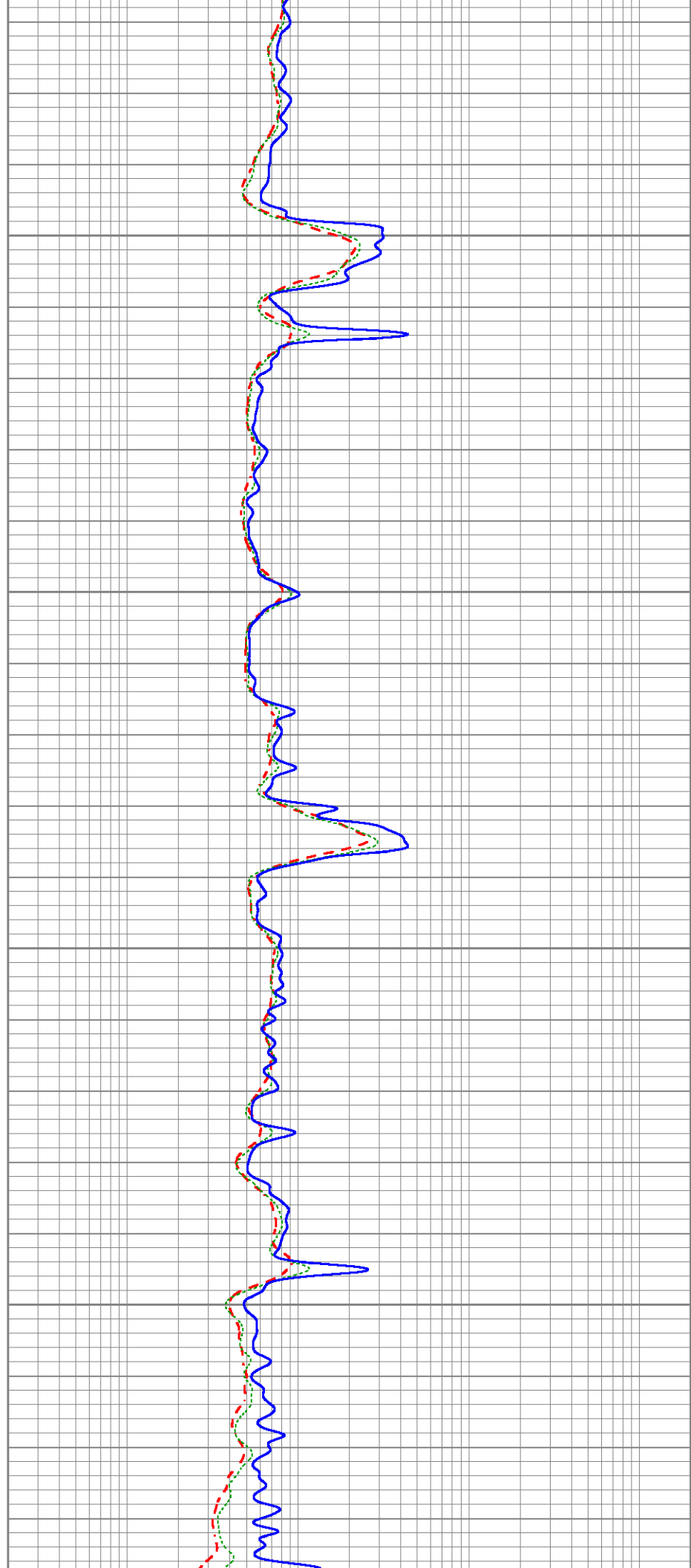


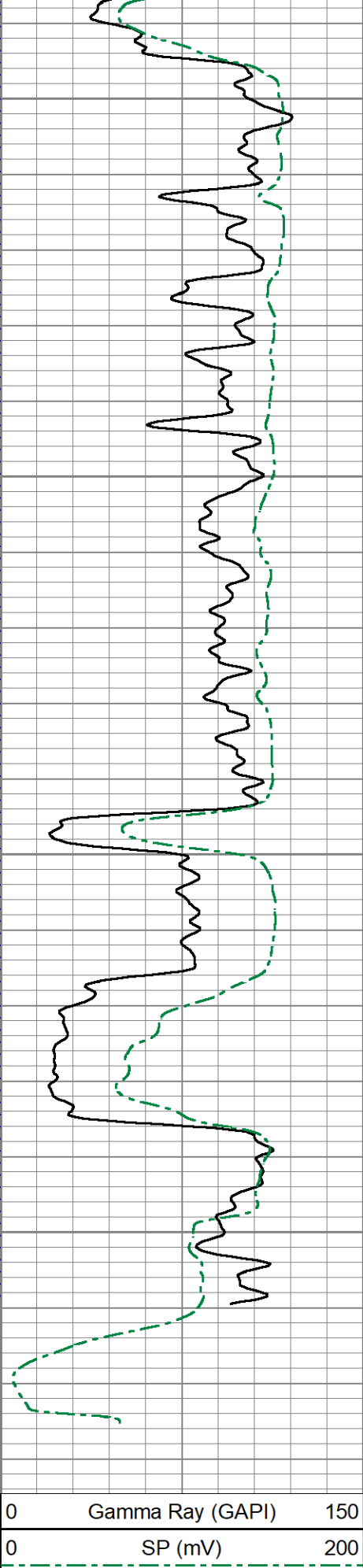
800

850

900

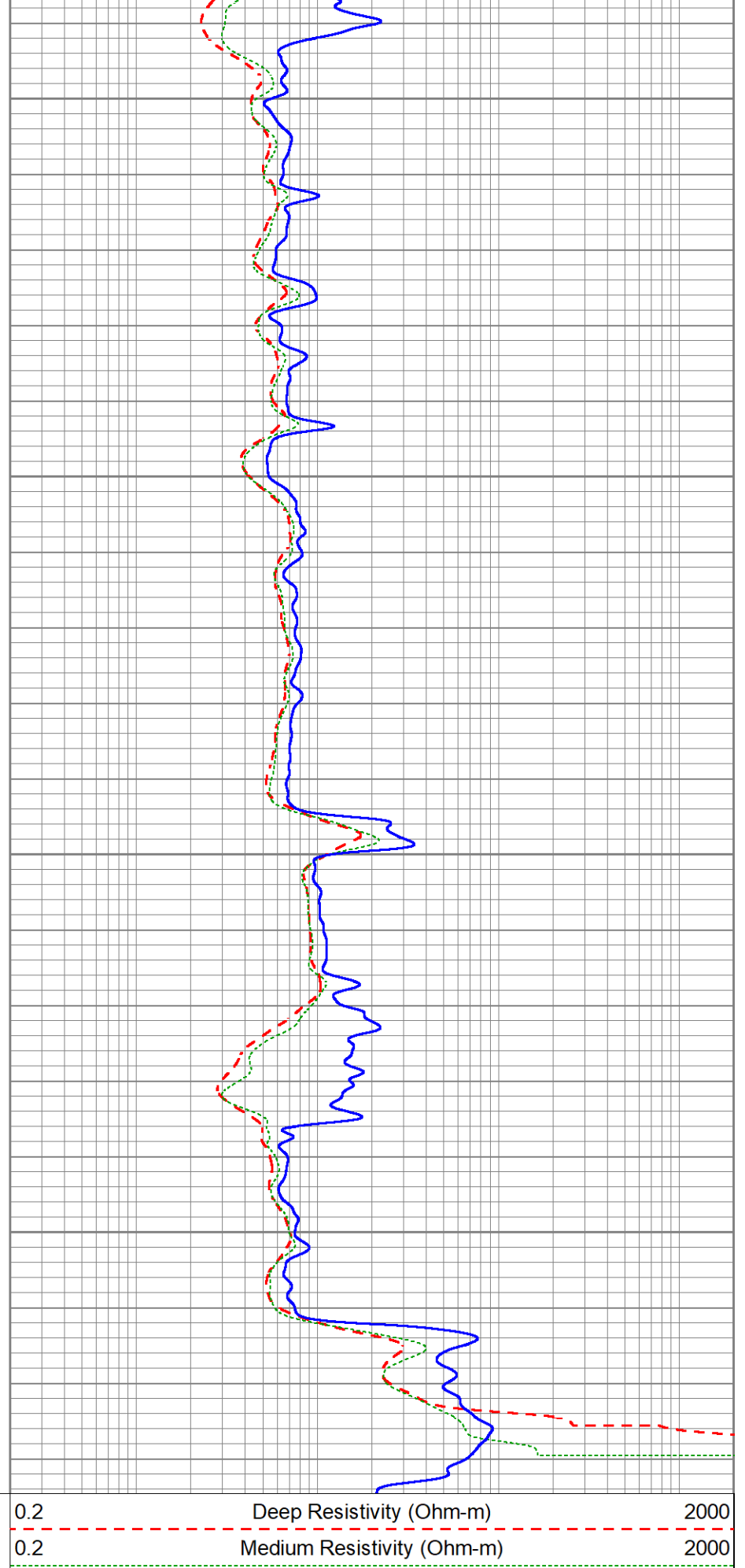
950





1000
1050
1100
1150

0	Gamma Ray (GAPI)	150
0	SP (mV)	200



0.2	Deep Resistivity (Ohm-m)	2000
0.2	Medium Resistivity (Ohm-m)	2000
0.2	Shallow Resistivity (Ohm-m)	2000

Sensor	Offset (ft)	Schematic	Description	Length (ft)	O.D. (in)	Weight (lb)
GRTemp GR	23.61 22.70		GR-PTS_OH (FW1306-49) Open Hole Digital Gamma Ray	3.69	3.38	40.00
CILD SP	10.92 10.42		DIL-GEAR (158) Dual Induction Electrical Log	21.36	4.00	395.00
CILM	7.00					
RLL3	1.65					

Dataset: ow2-9284 lone wolf.db: field/well/DILGR/pass1
 Total length: 25.05 ft
 Total weight: 435.00 lb
 O.D.: 4.00 in

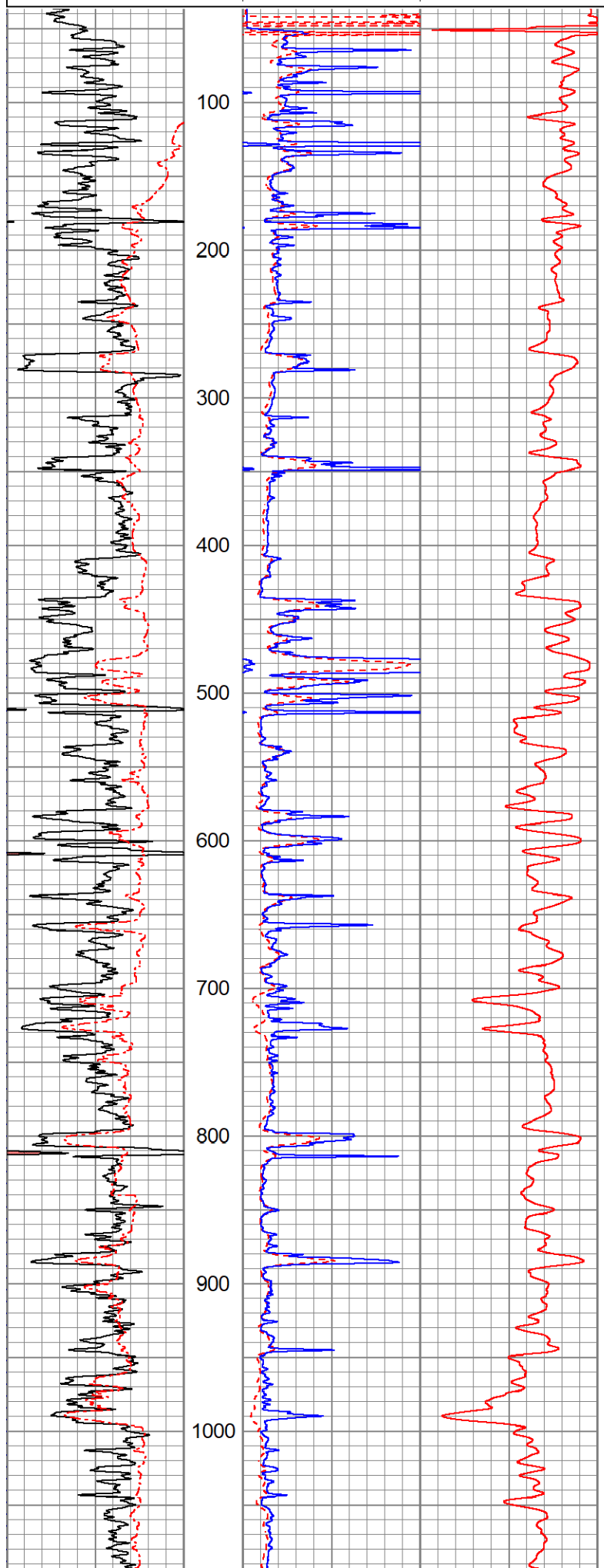


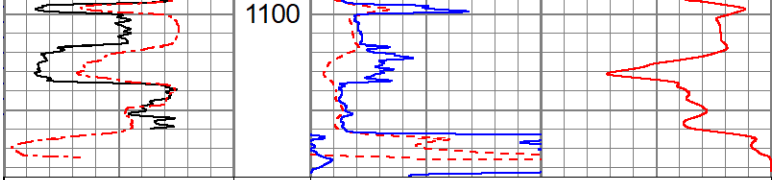
1" DIL SECTION

Database File ow2-9284 lone wolf.db
 Dataset Pathname DILGR/pass1.3
 Presentation Format dil1
 Dataset Creation Thu Jun 18 18:09:05 2020
 Charted by Depth in Feet scaled 1:1200

0 GR (GAPI) 150	1000 CILD (mmho/m)	0
0 SP (mV) 200	RILD	
	0 (Ohm-m) 50	
	RLL3	

KEL5
0 (Ohm-m) 50





0 GR (GAPI) 150

0 SP (mV) 200

1000 CILD (mmho/m) 0

RILD

0 (Ohm-m) 50

RLL3

0 (Ohm-m) 50