

SONIC
LOG



Company WOOLSEY OPERATING COMPANY, LLC.
Well TINKER #1
Field DIERKS EXT
County SUMNER State KANSAS

Location: API #: 15-191-22817-0000
2100' FSL & 1200' FWL
SEC 24 TWP 30S RGE 1W
Permanent Datum GROUND LEVEL Elevation 1237
Log Measured From KELLY BUSHING 5' A.G.L
Drilling Measured From KELLY BUSHING
Other Services CDL/CNL/PE DIL
Elevation K.B. 1242 D.F. 1240 G.L. 1237

Date	6/7/20		
Run Number	TWO		
Depth Driller	3950		
Depth Logger	3950		
Bottom Logged Interval	3940		
Top Log Interval	300		
Casing Driller	8 5/8" @ 306'		
Casing Logger	306'		
Bit Size	7 7/8		
Type Fluid in Hole	CHEMICAL MUD	CHLORIDES 2400 PPM	
Density / Viscosity	9.3/53		
pH / Fluid Loss	9.5/8.8		
Source of Sample	FLOWLINE		
Rm @ Meas. Temp	.60 @ 81F		
Rmf @ Meas. Temp	.45 @ 81F		
Rmc @ Meas. Temp	.72 @ 81F		
Source of Rmf / Rmc	MEASUREMENT		
Rm @ BHT	.41 @ 117F		
Time Circulation Stopped	2 HOURS		
Time Logger on Bottom	////		
Maximum Recorded Temperature	117F		
Equipment Number	3802		
Location	HAYS, KANSAS		
Recorded By	JASON CAPPELLUCCI		
Witnessed By	BLAKE MILLER		

<<< Fold Here >>>

All interpretations are opinions based on inferences from electrical or other measurements and we cannot and do not guarantee the accuracy or correctness of any interpretation, and we shall not, except in the case of gross or willful negligence on our part, be liable or responsible for any loss, costs, damages, or expenses incurred or sustained by anyone resulting from any interpretation made by any of our officers, agents or employees. These interpretations are also subject to our general terms and conditions set out in our current Price Schedule.

Comments

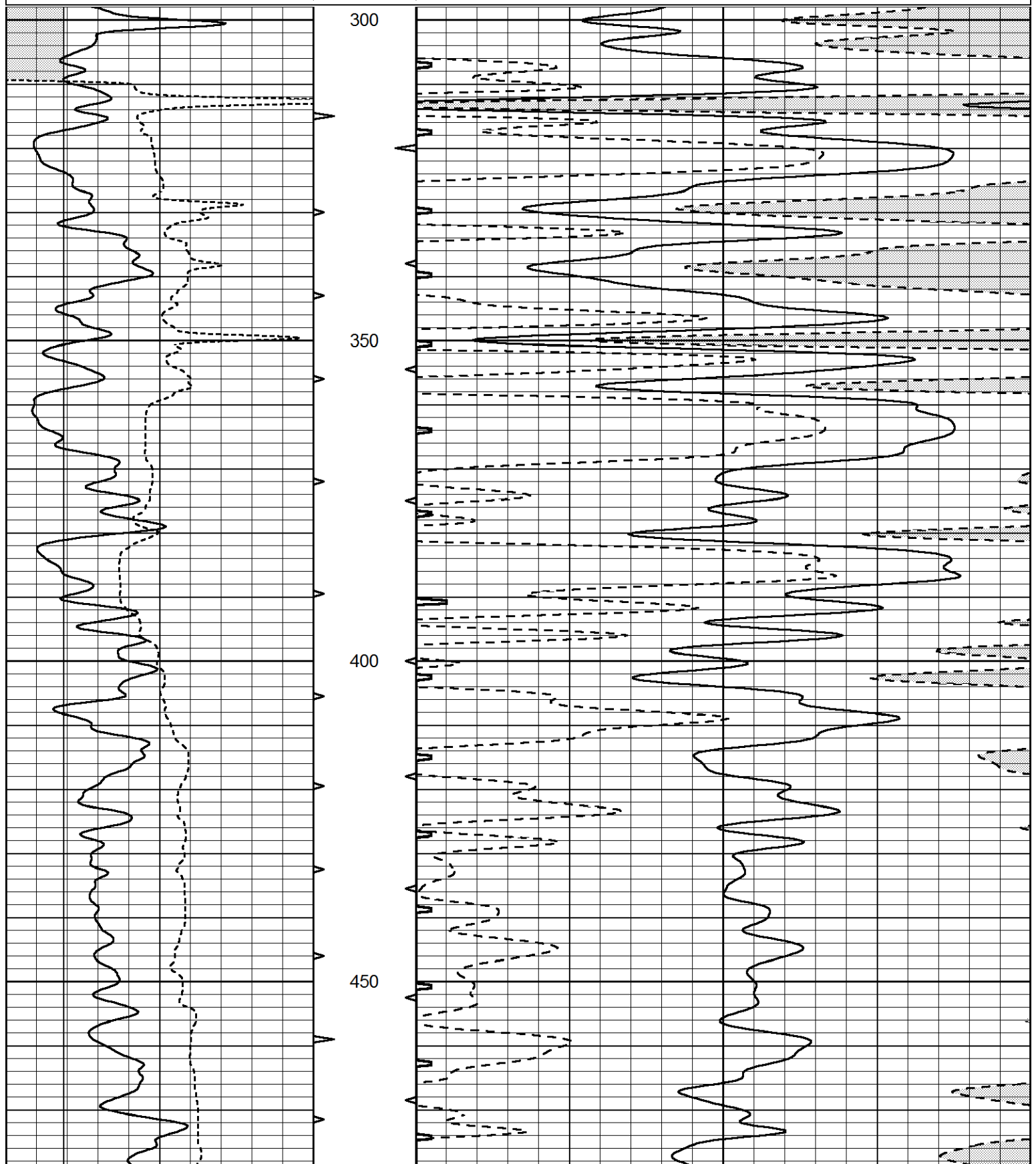
THANK YOU FOR USING ELI WIRELINE SERVICES, HAYS, KS. (785) 628-6395
DIRECTIONS
WICHITA, KS. - SOUTH TO MULVANE EXIT - WEST TO HWY 81 - SOUTH TO 110TH
2 3/4 WEST - NORTH INTO

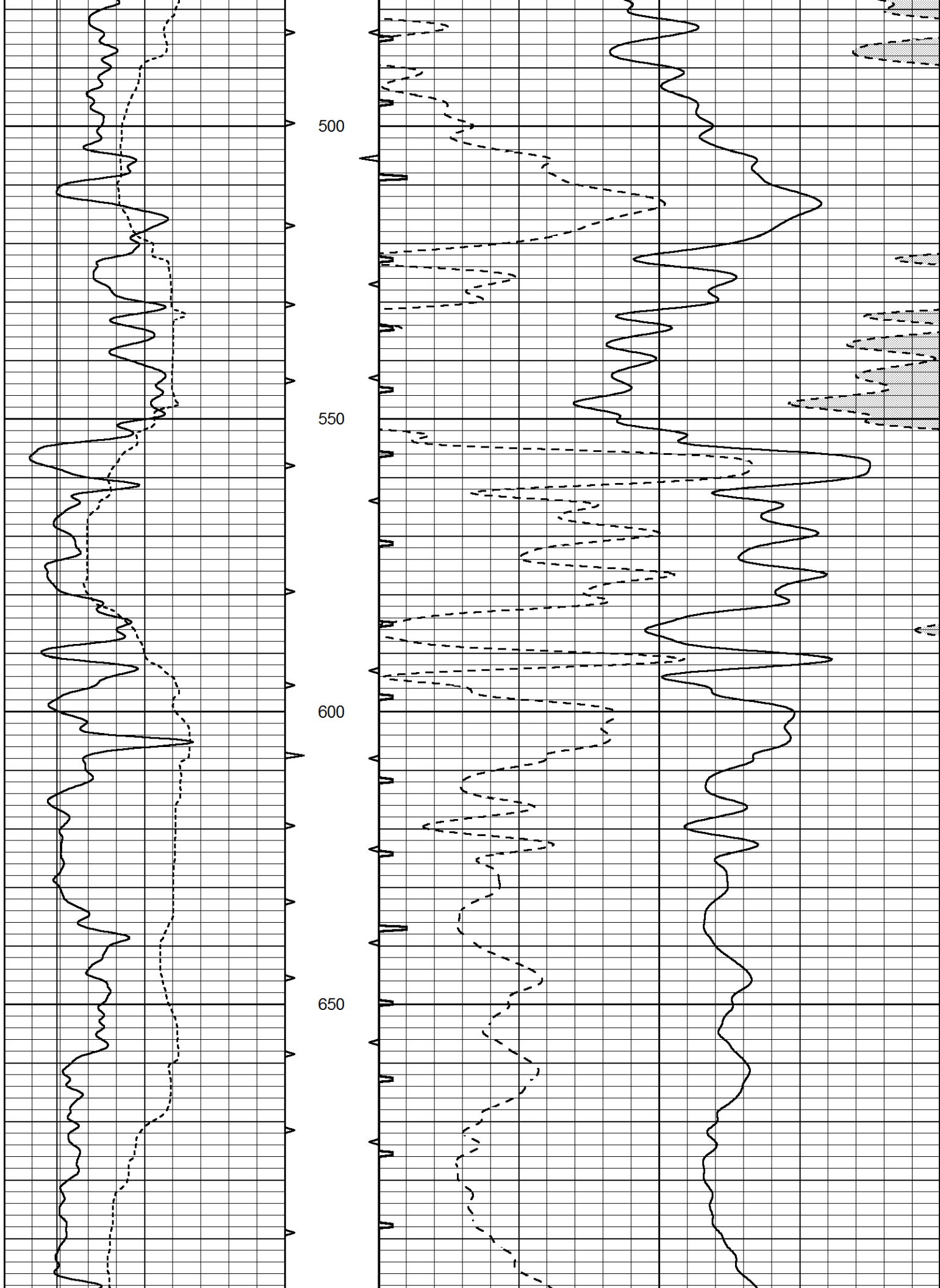


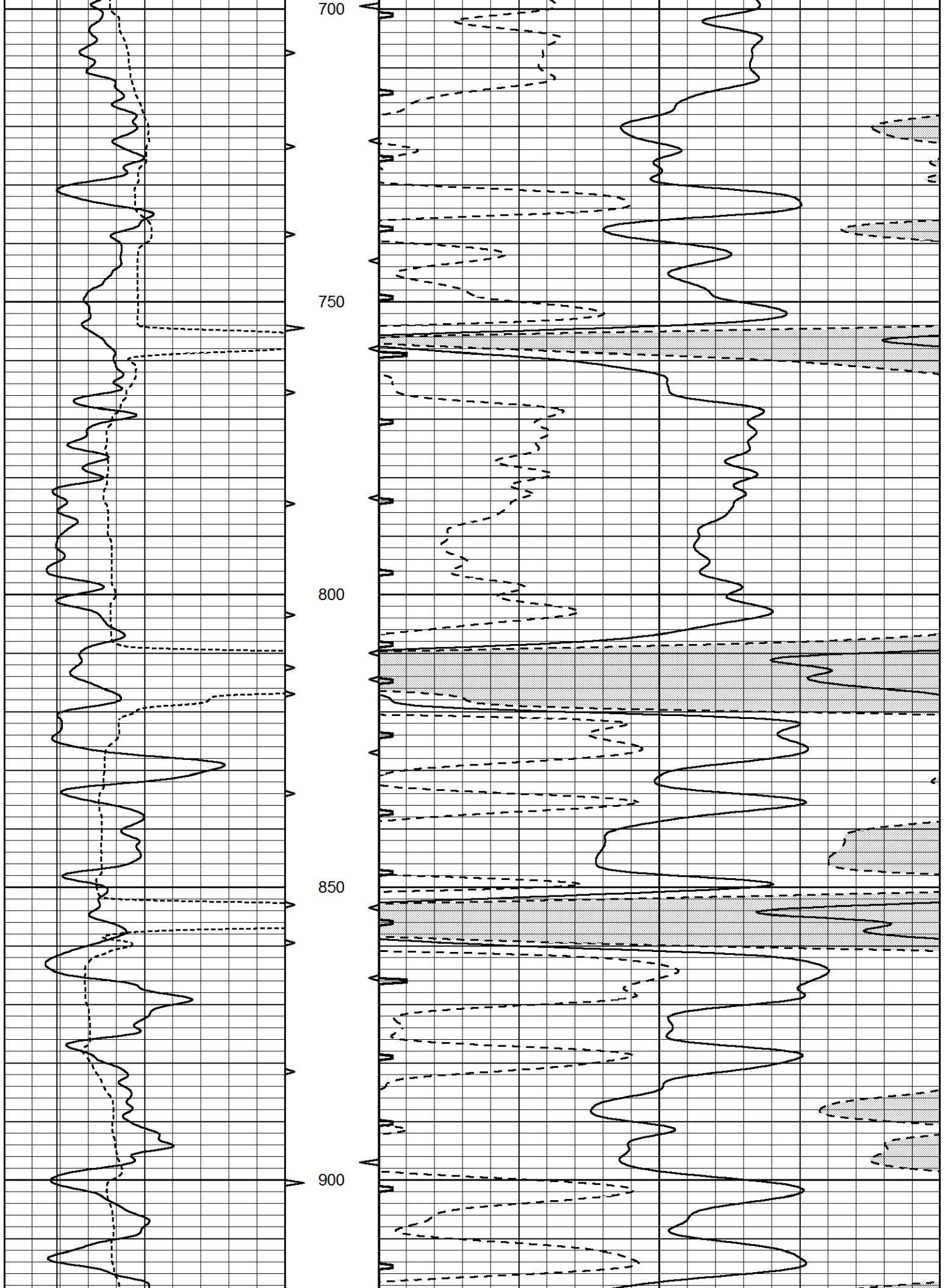
MAIN SECTION

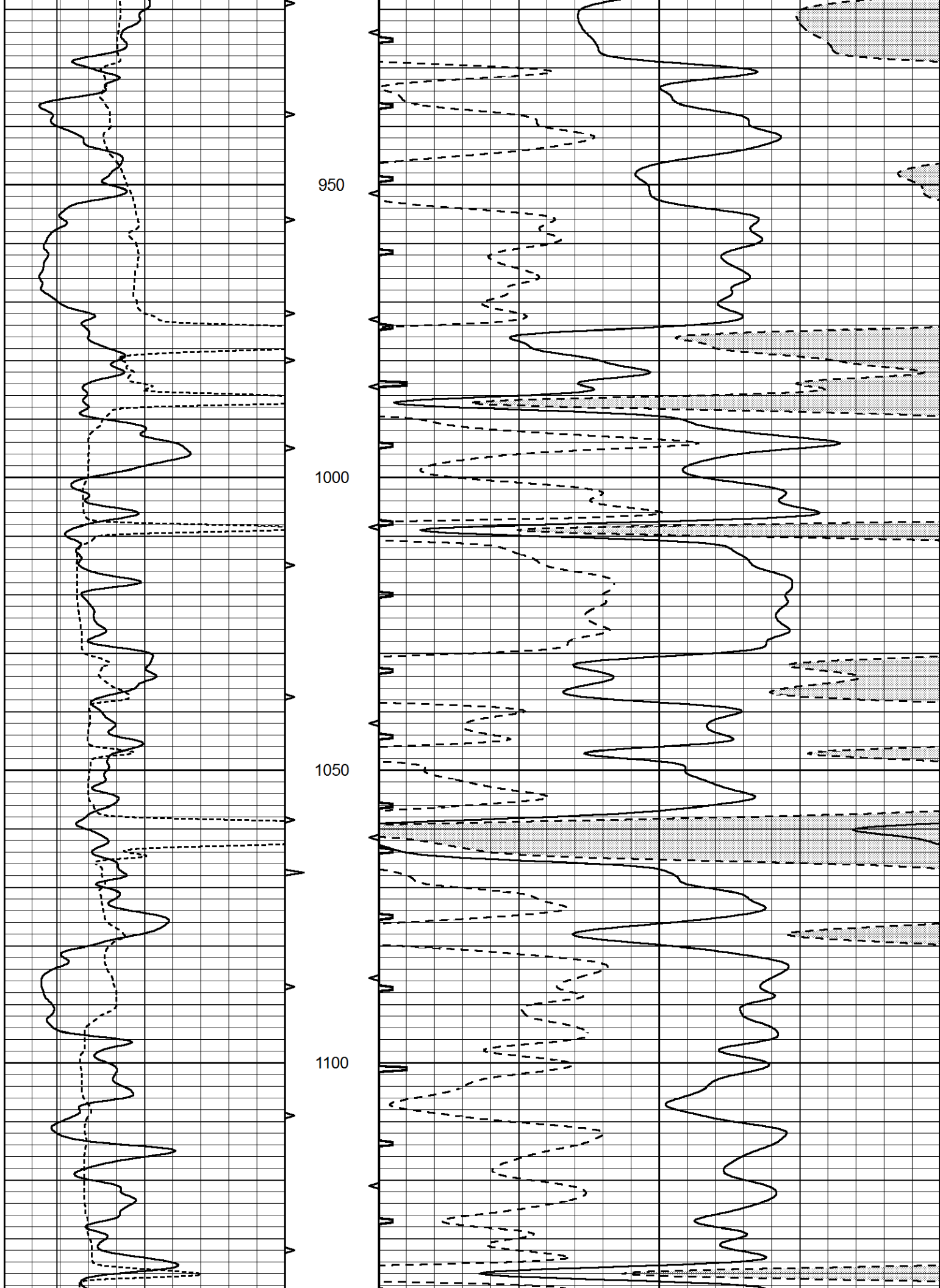
Database File 4738pe.db
 Dataset Pathname pass6.1
 Presentation Format _slt
 Dataset Creation Sun Jun 07 07:57:21 2020
 Charted by Depth in Feet scaled 1:240

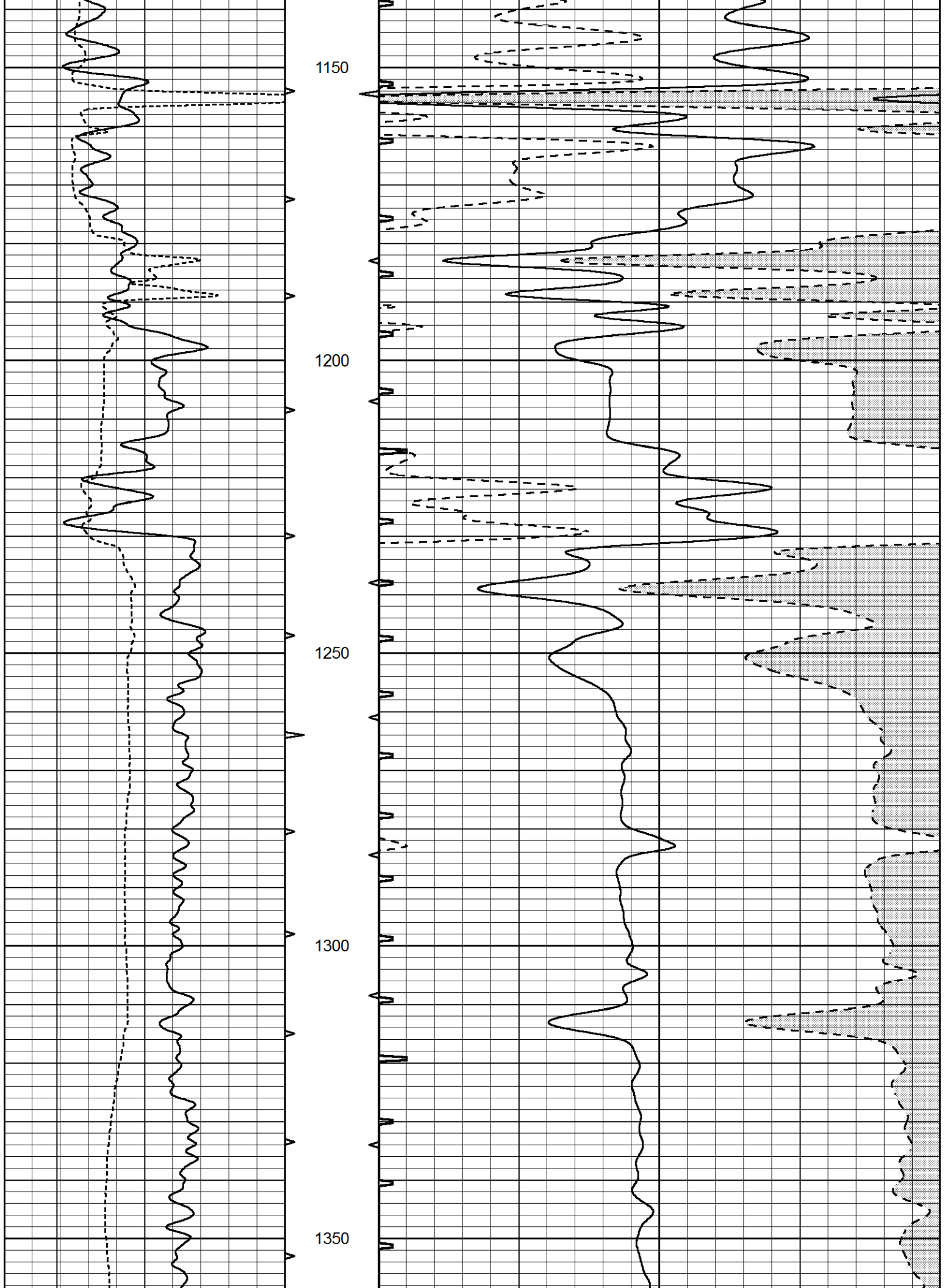
0	GAMMA RAY (GAPI)	150	ABHV	140	DELTA TIME (usec/ft)	40	
6	CALIPER (in)	16	10 (ft3)	0	30	SONIC POROSITY (pu)	-10
			TBHV	0	ITT (msec)	20	
			0 (ft3)	10			

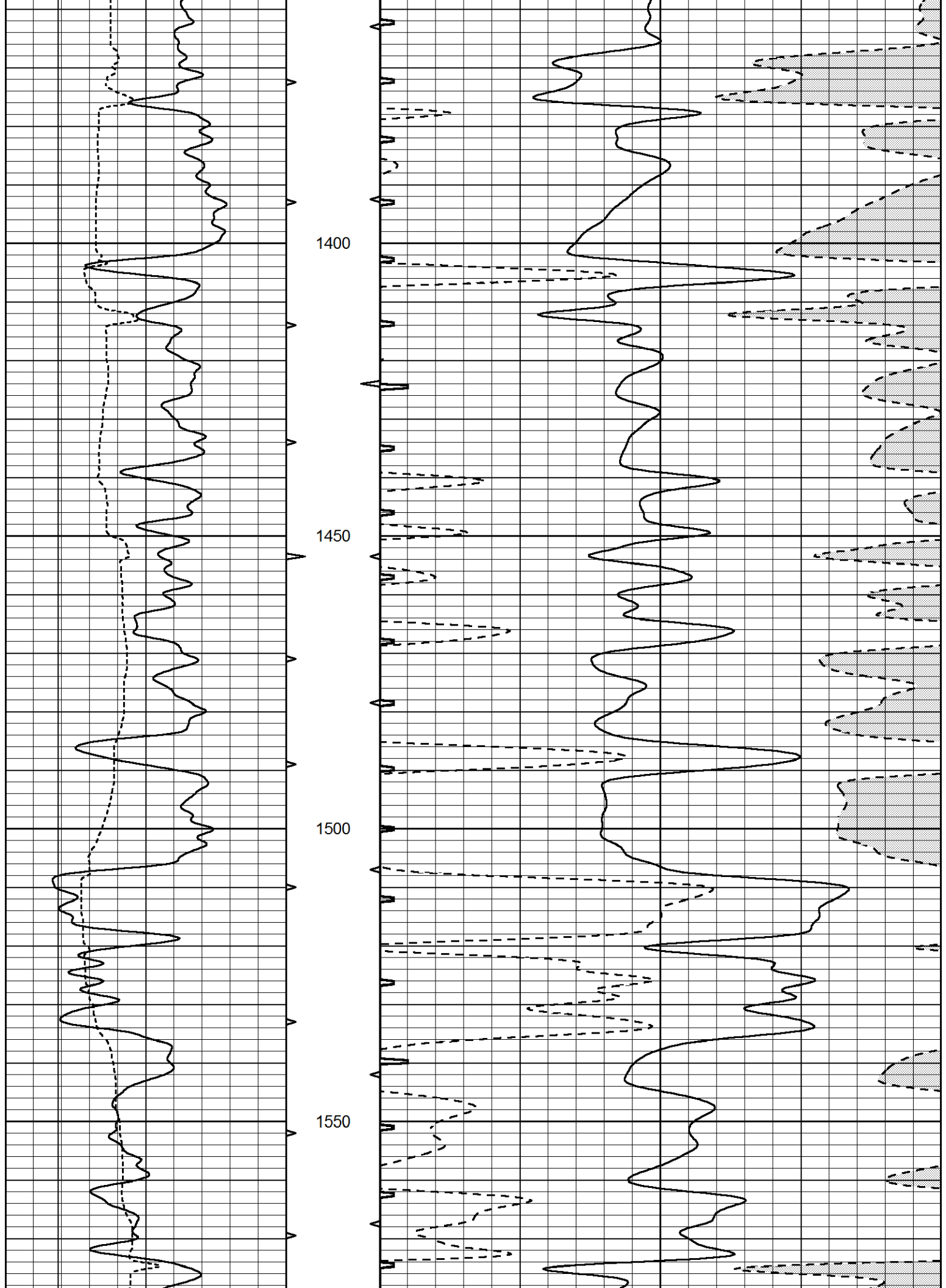


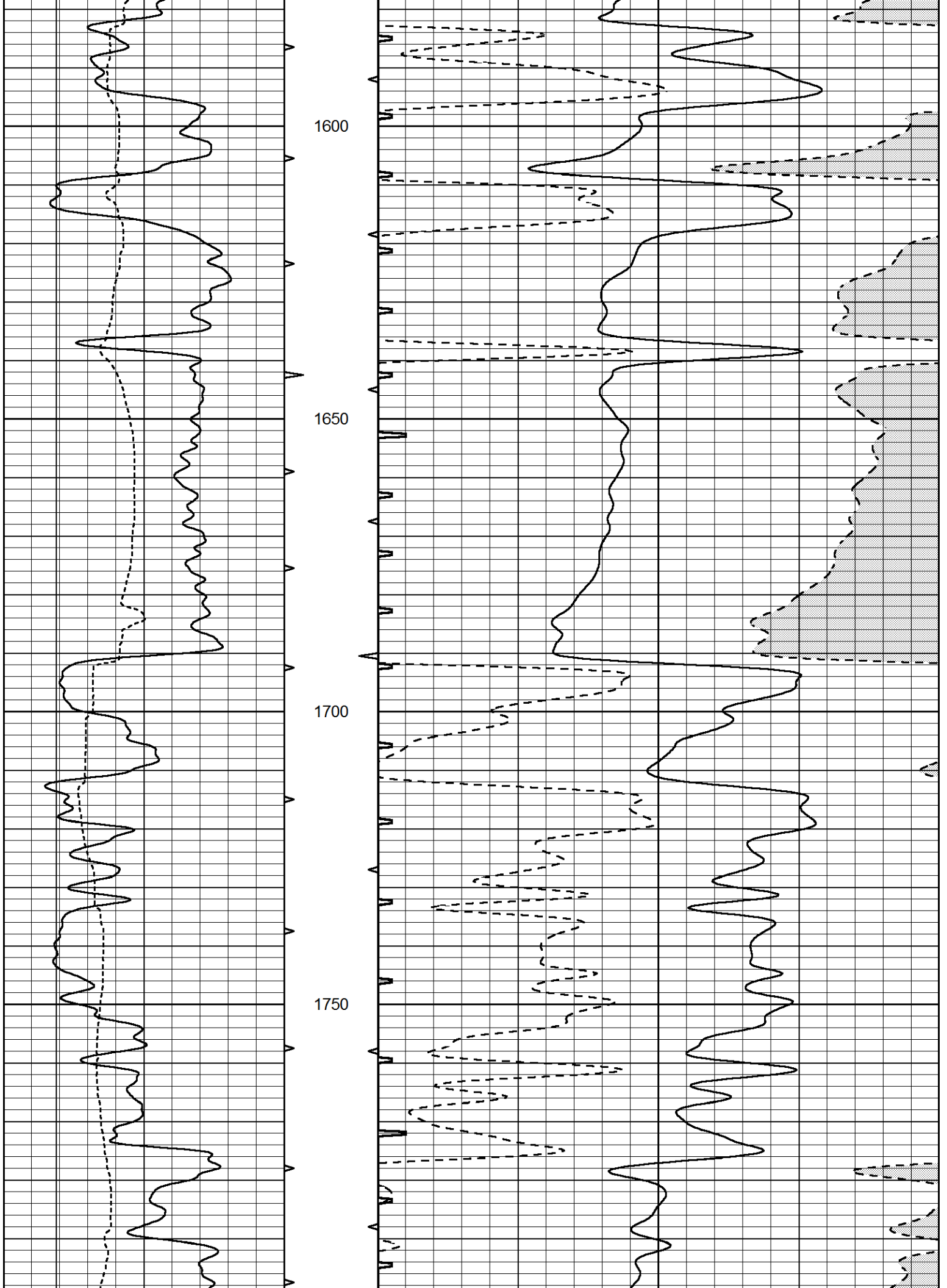


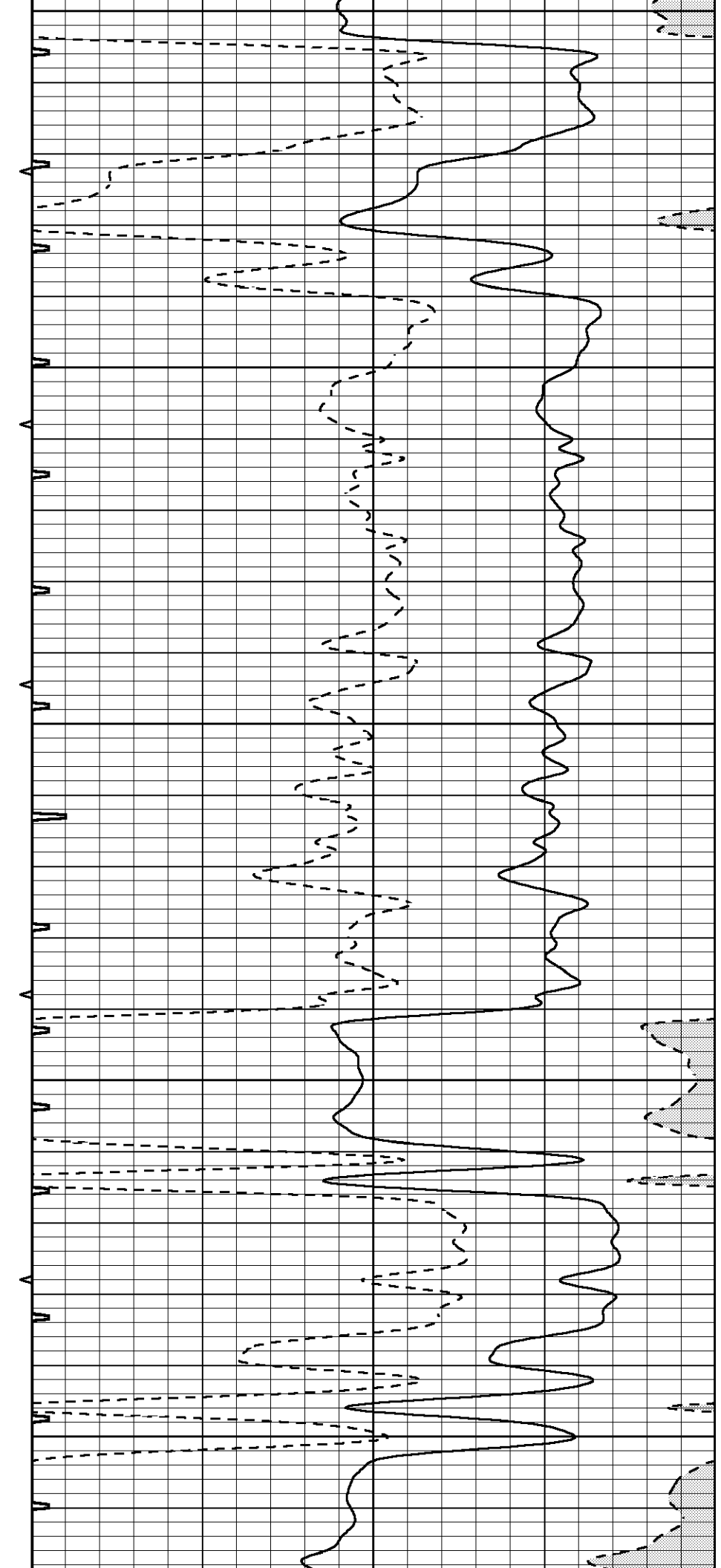
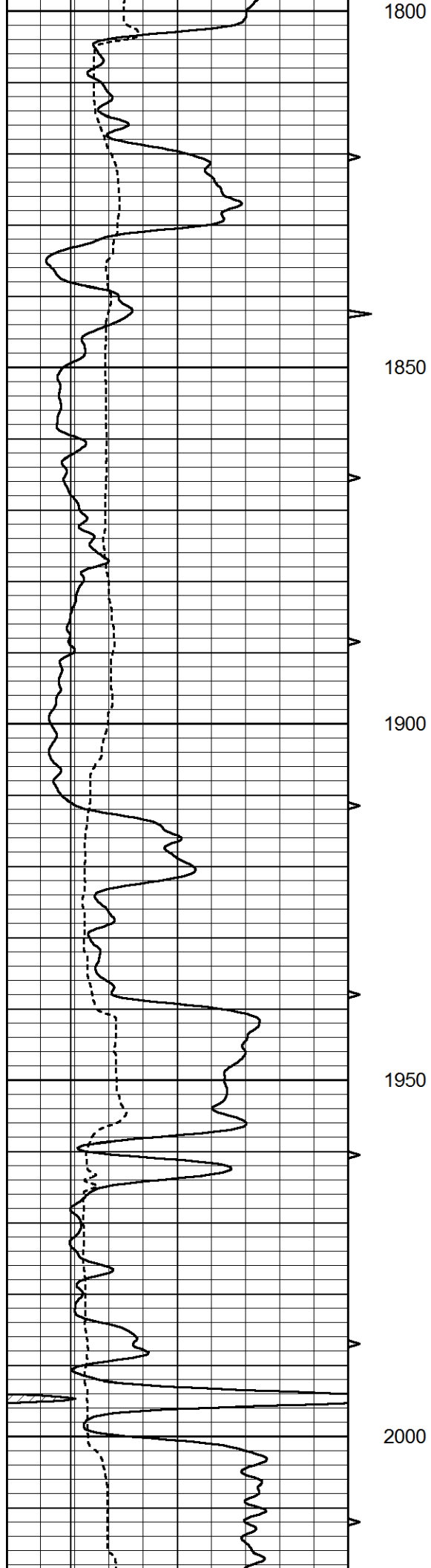


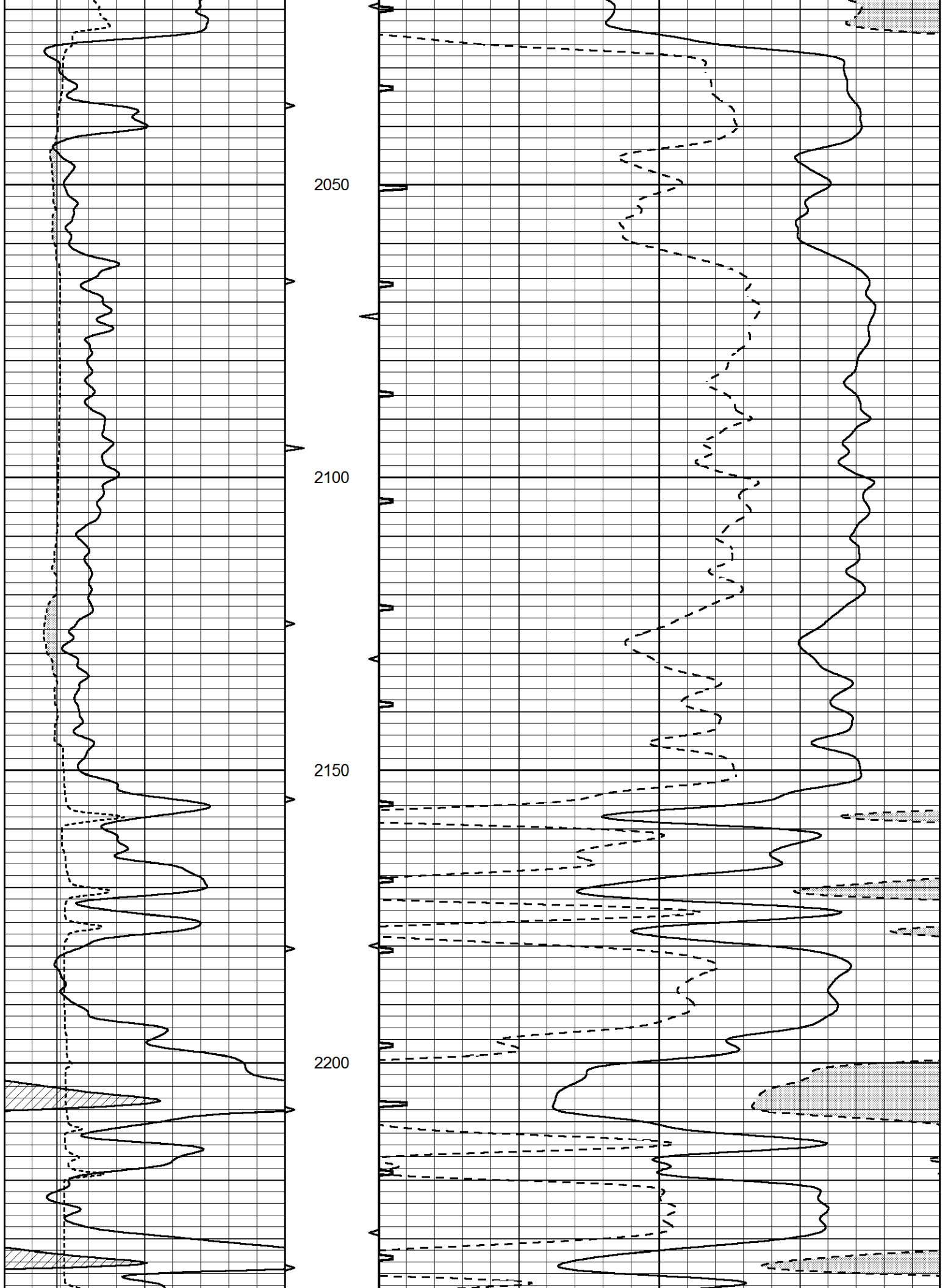


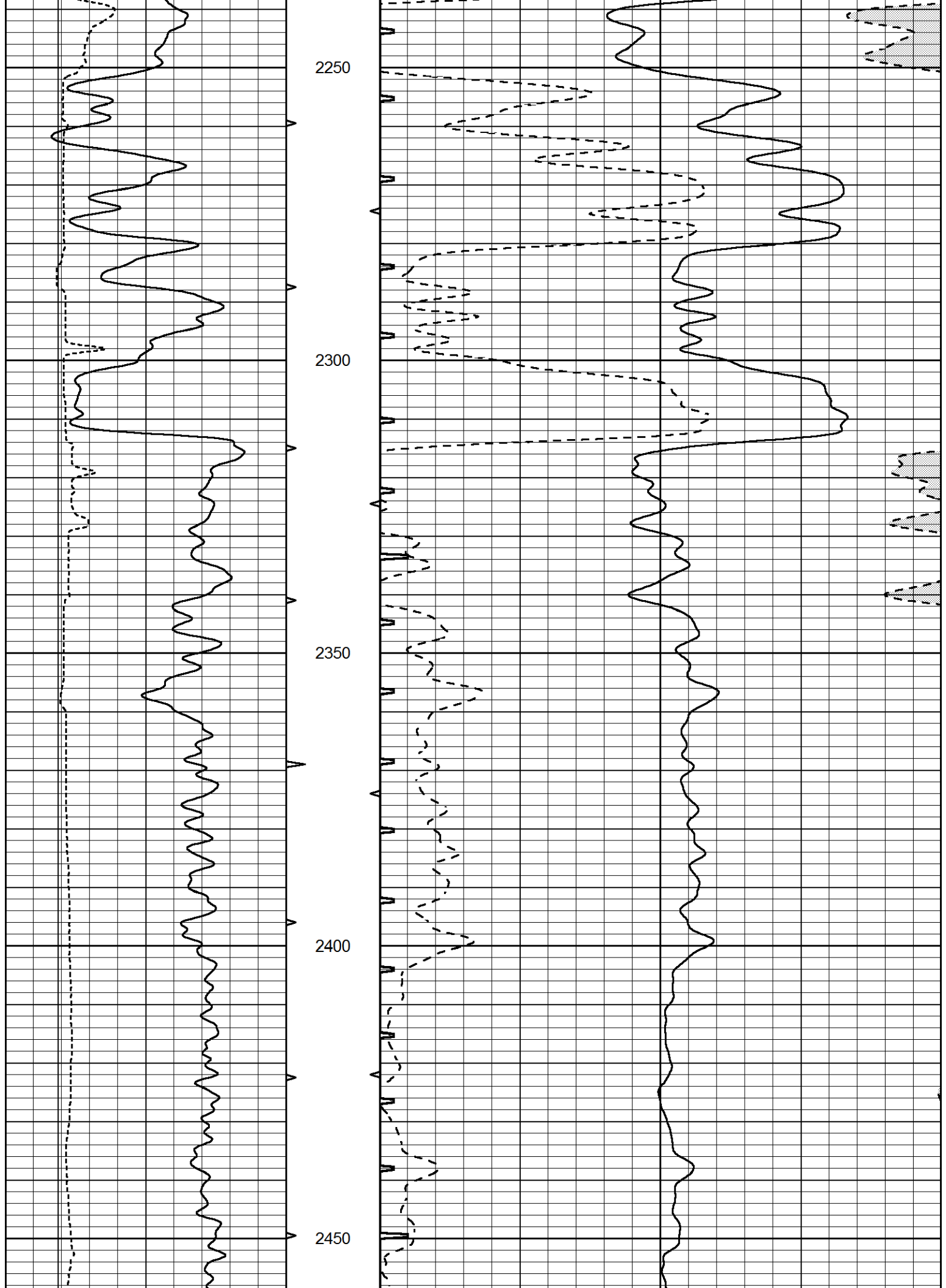


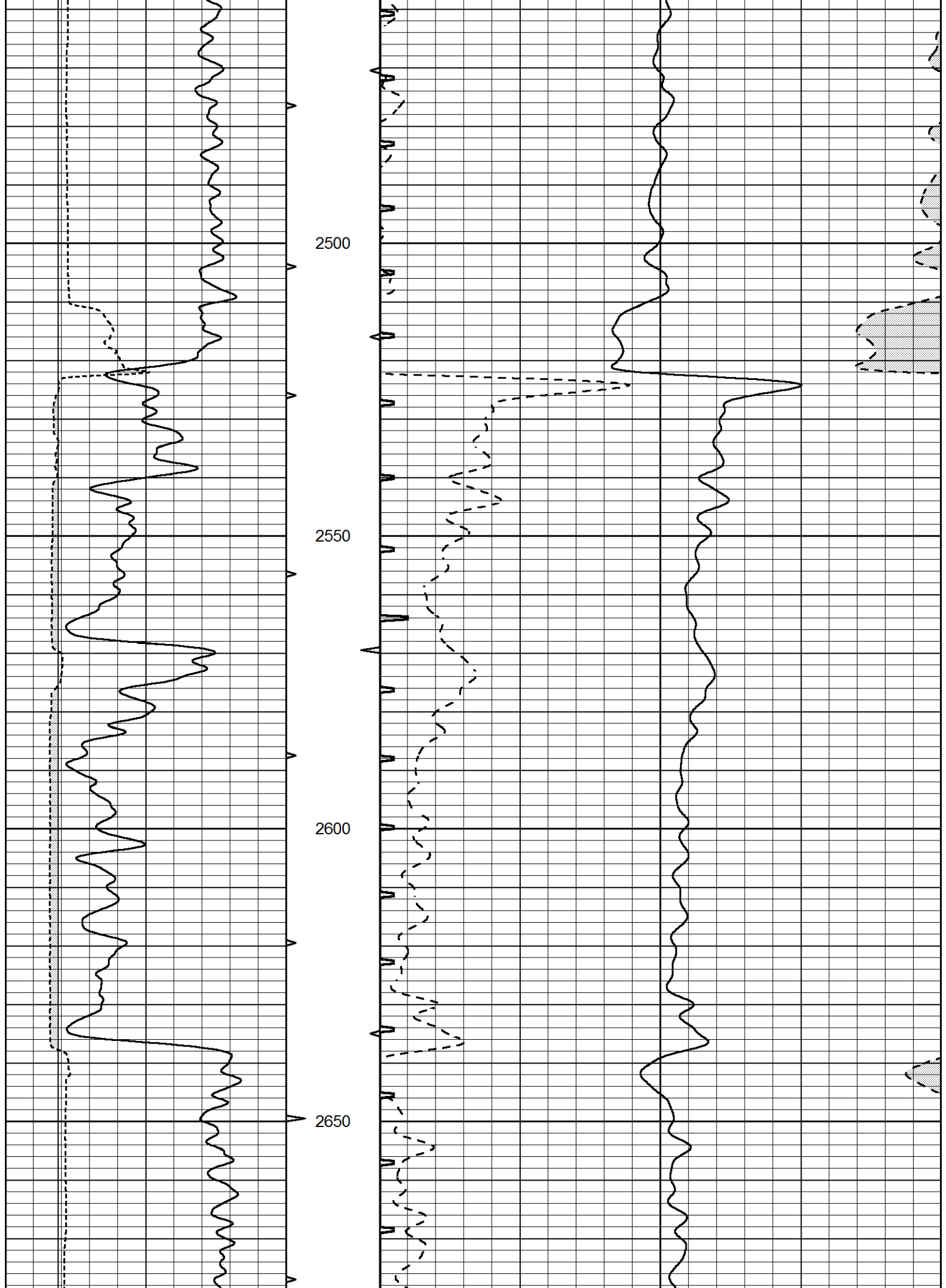


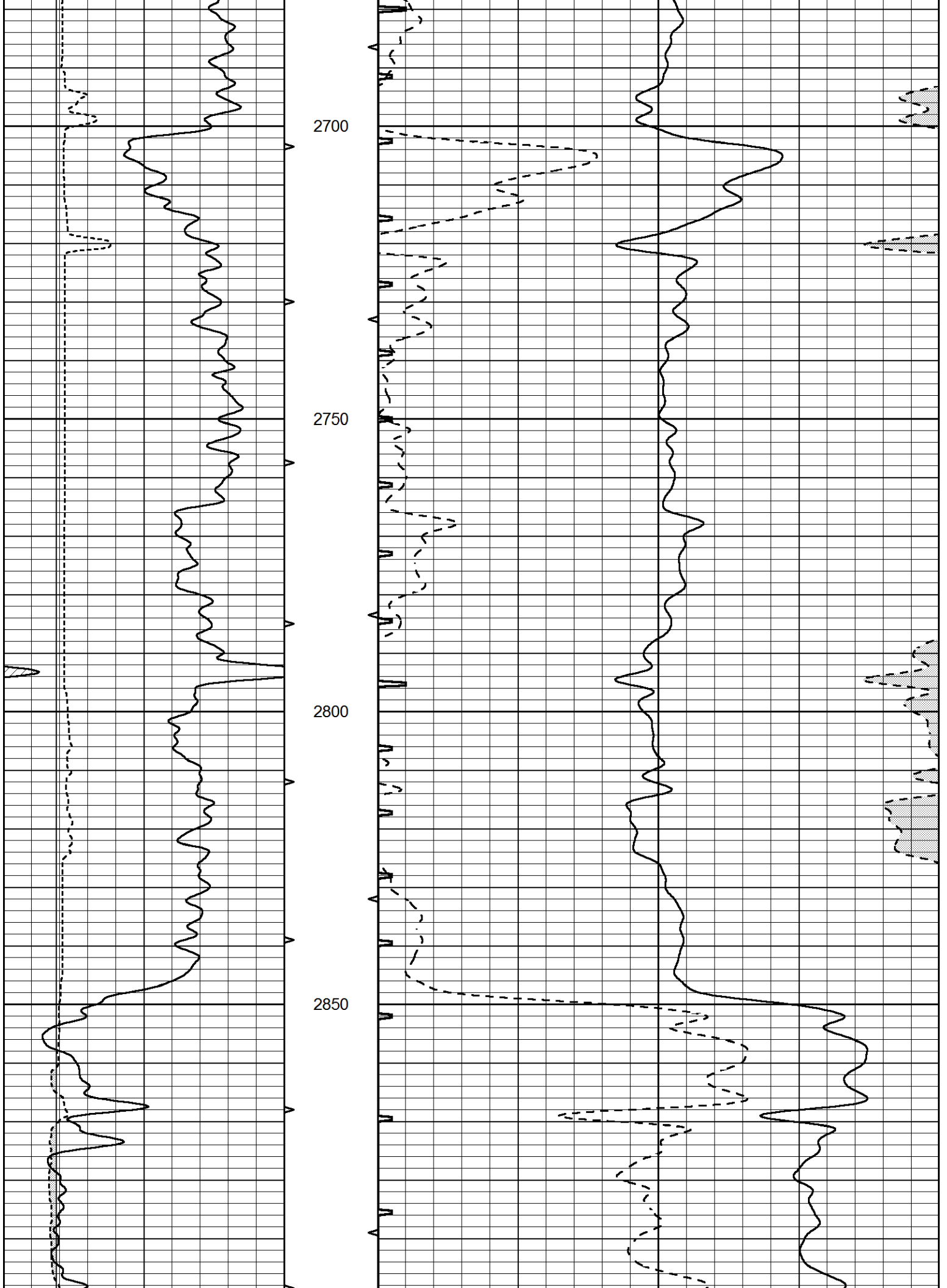


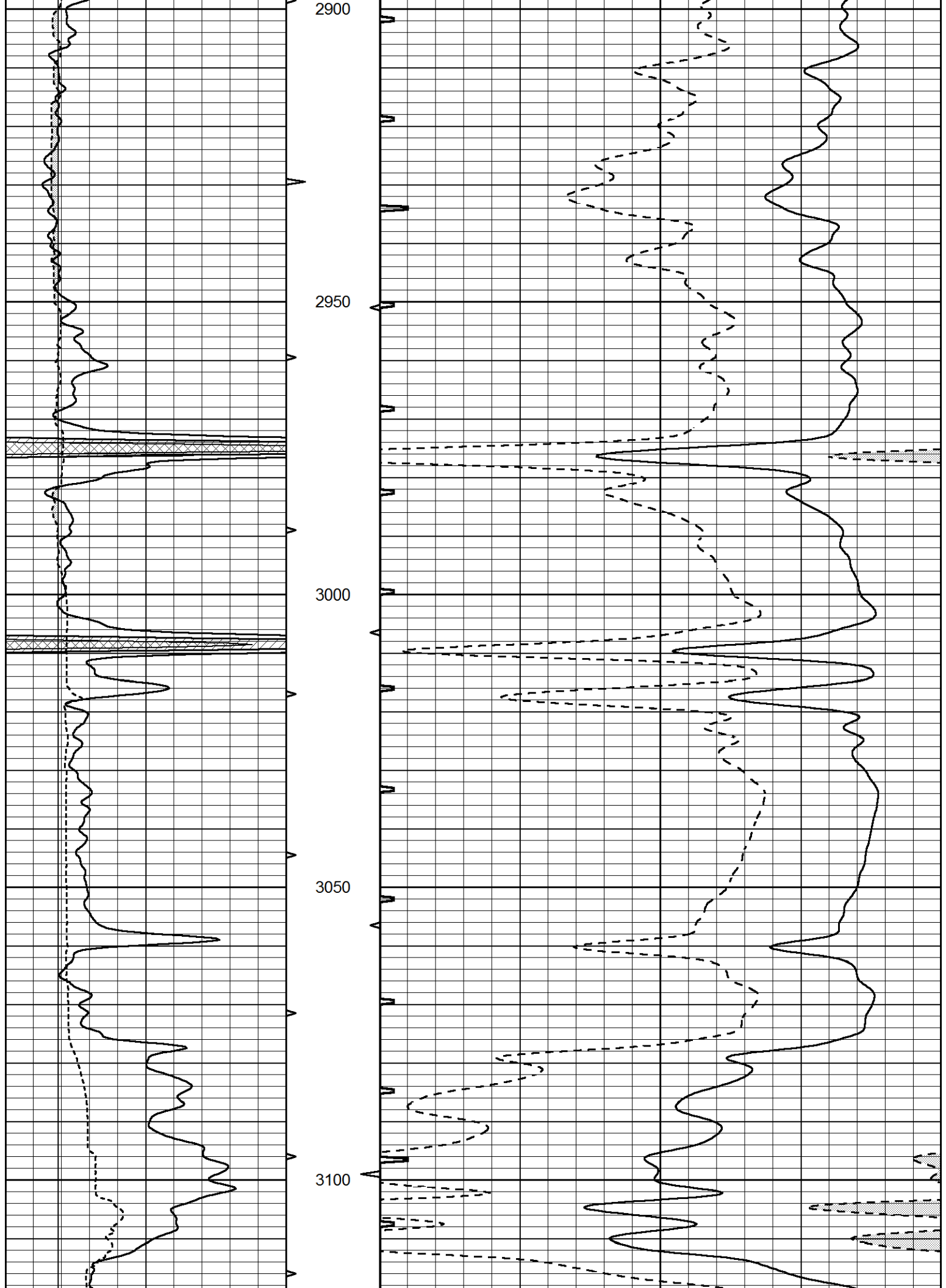


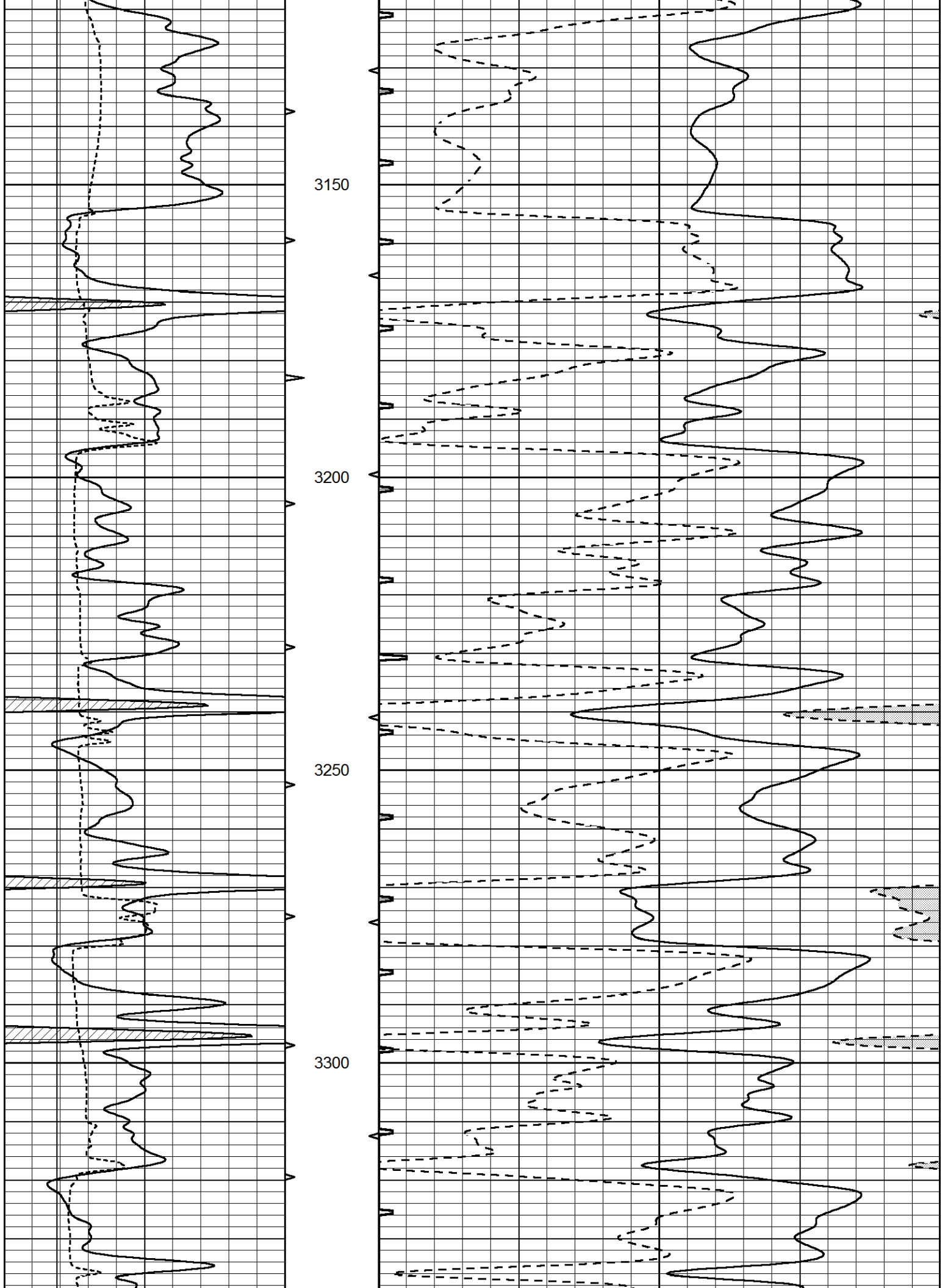


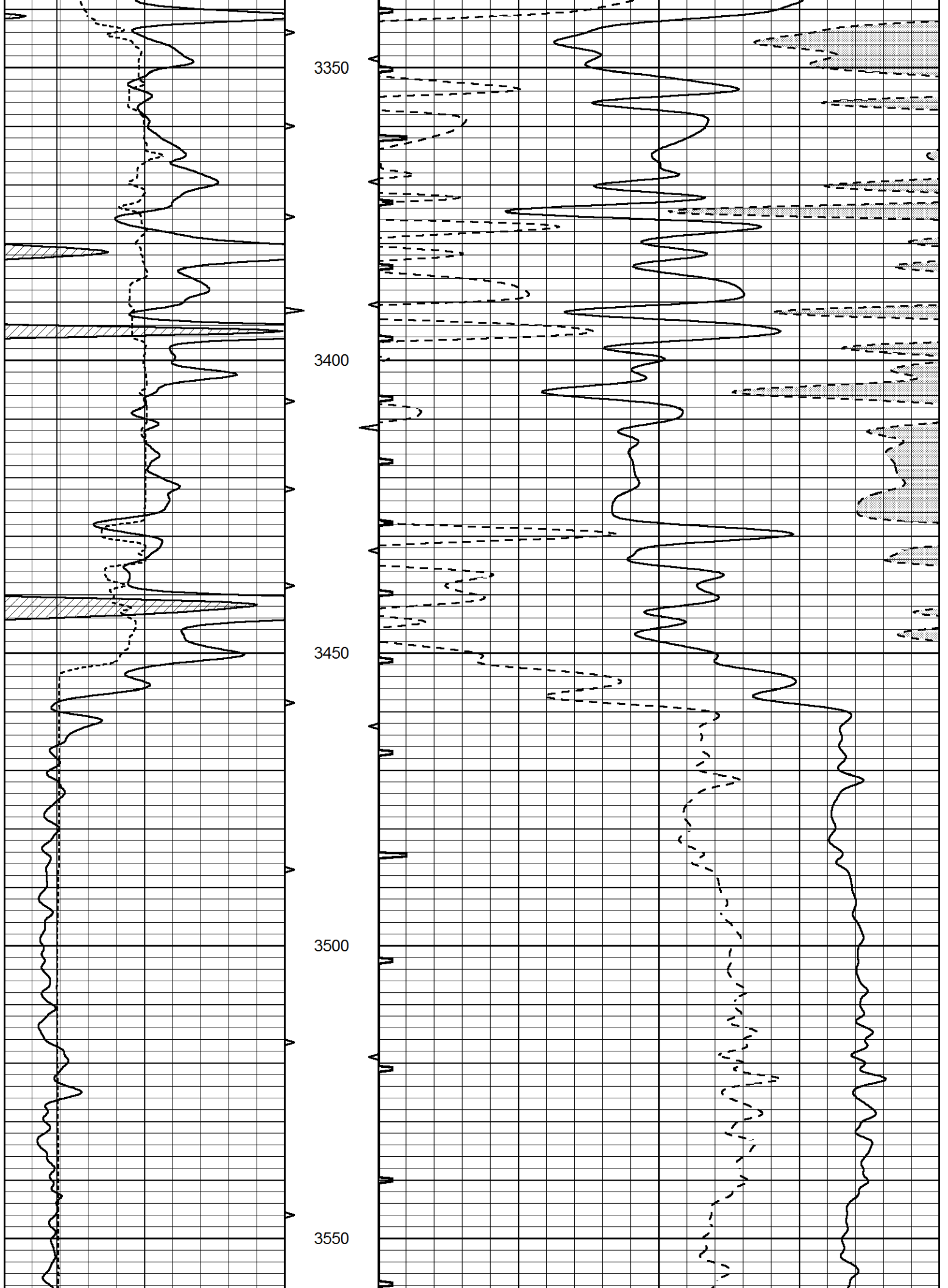


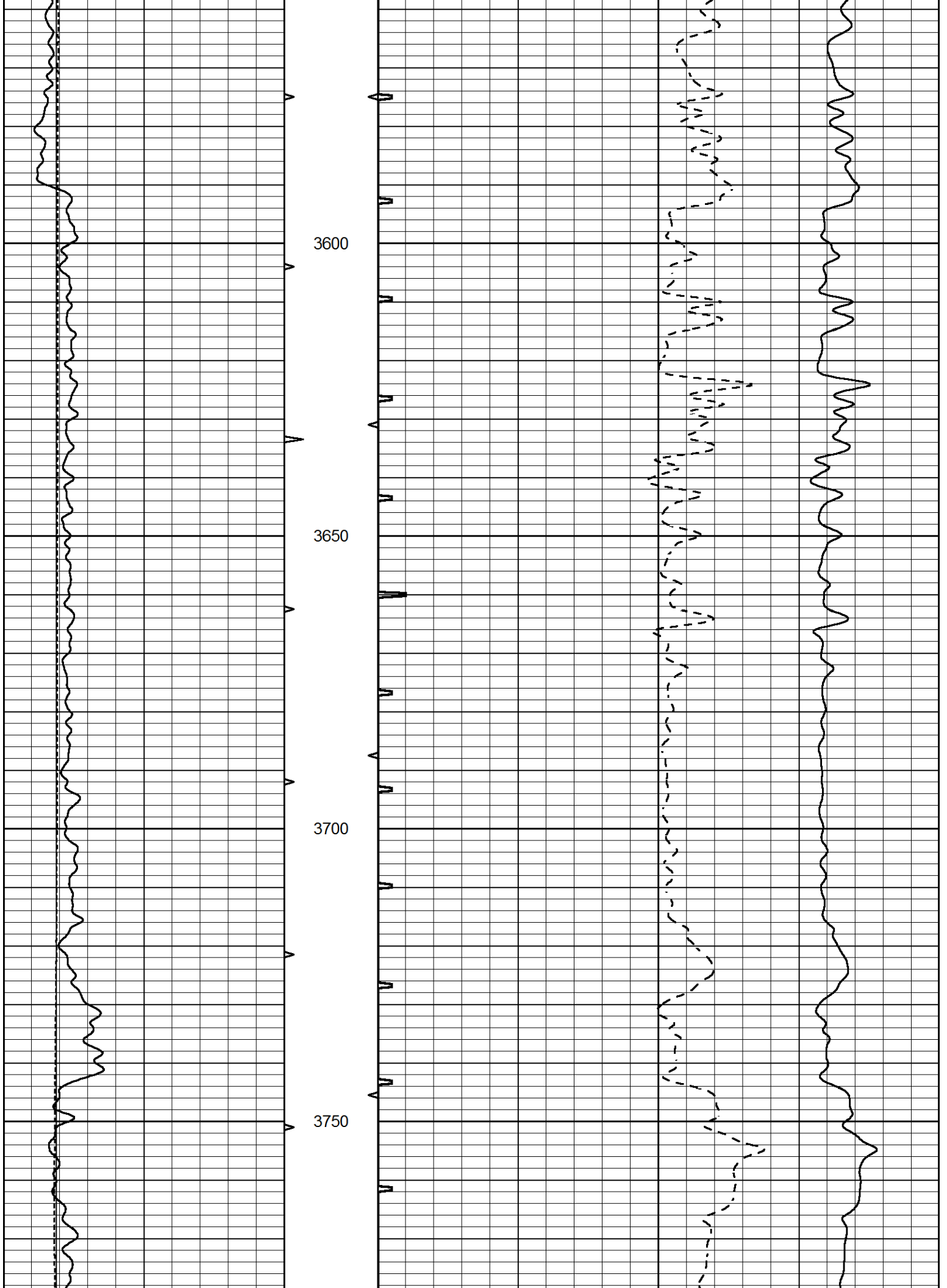


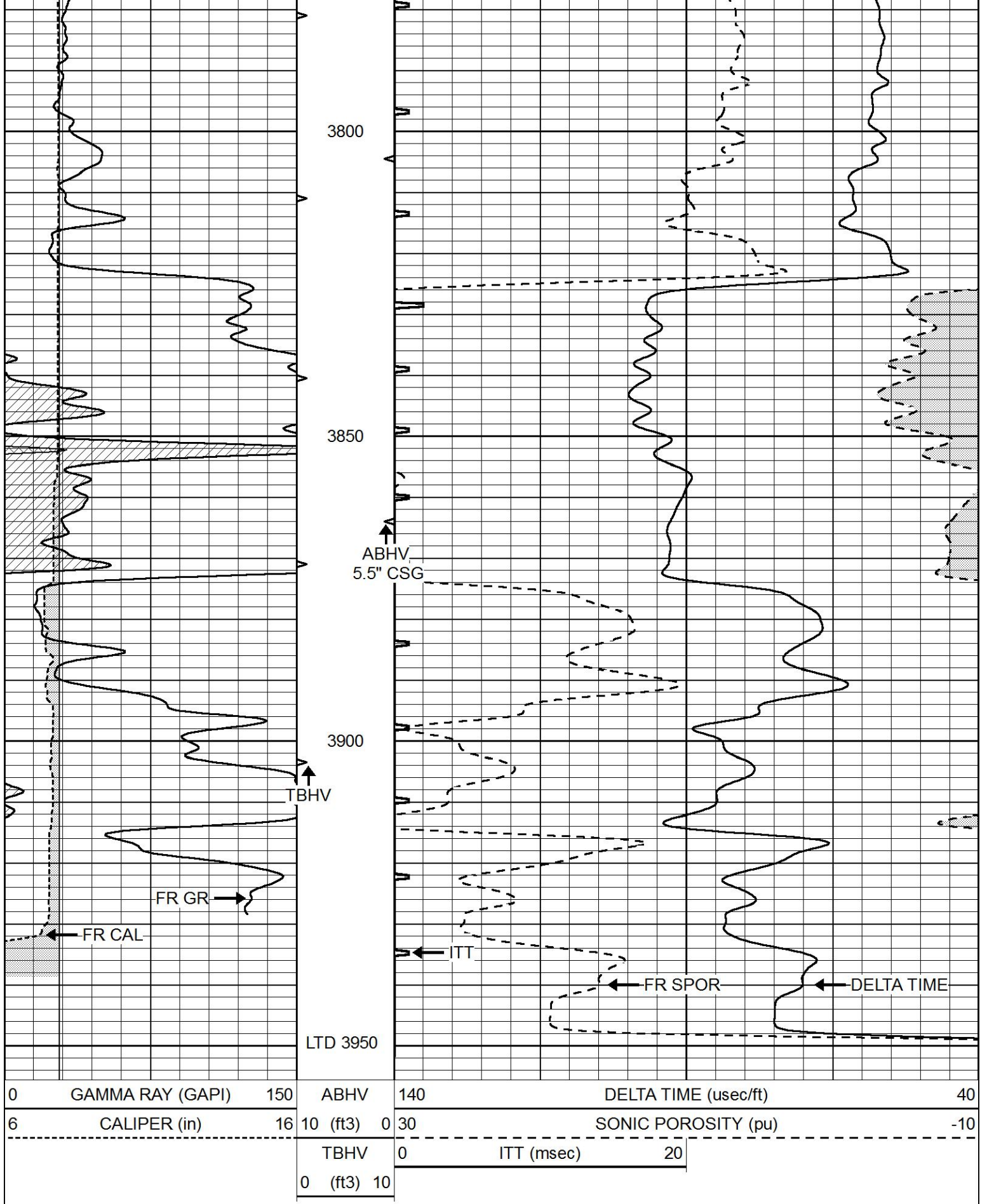








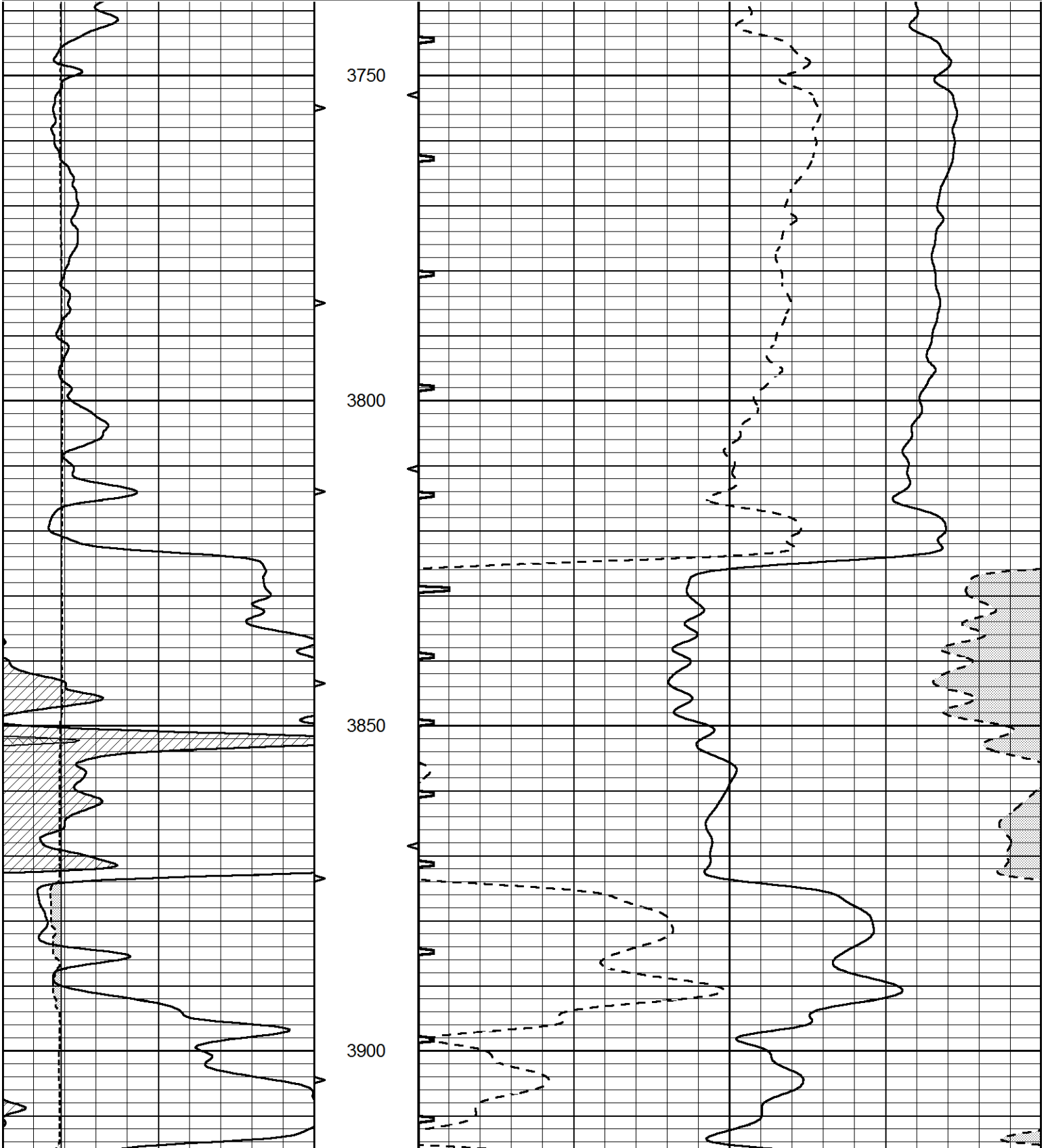


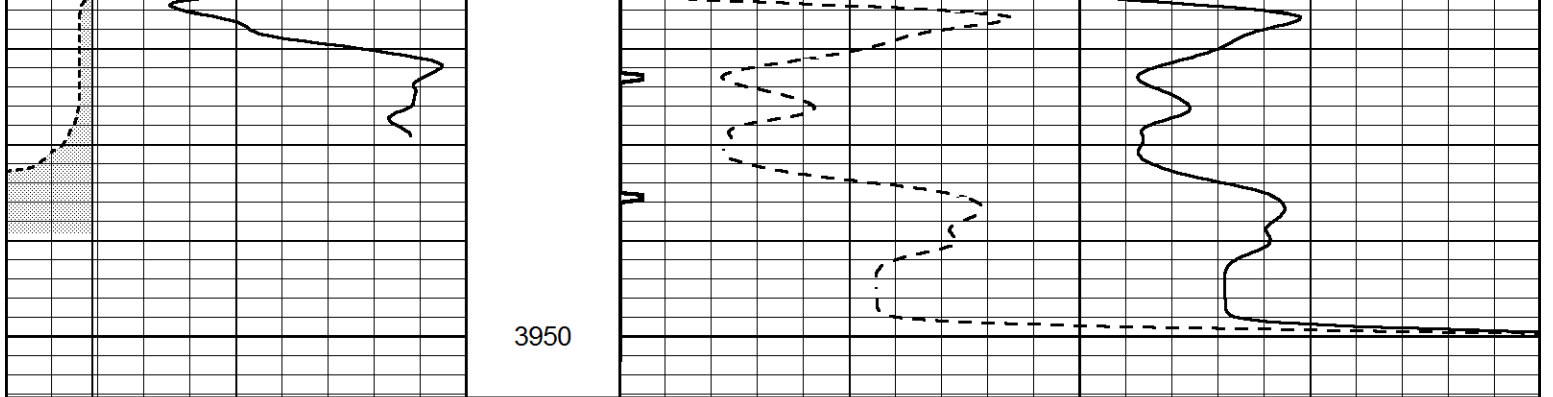


REPEAT SECTION

Database File 4738pe.db
 Dataset Pathname pass5.1
 Presentation Format _slt
 Dataset Creation Sun Jun 07 07:21:58 2020
 Charted by Depth in Feet scaled 1:240

0	GAMMA RAY (GAPI)	150	ABHV	140	DELTA TIME (usec/ft)	40	
6	CALIPER (in)	16	10 (ft3)	0	30	SONIC POROSITY (pu)	-10
			TBHV	0	ITT (msec)	20	
			0 (ft3)	10			





3950

0	GAMMA RAY (GAPI)	150	ABHV	140	DELTA TIME (usec/ft)	40
6	CALIPER (in)	16	10 (ft3) 0	30	SONIC POROSITY (pu)	-10
			TBHV	0	ITT (msec)	20
			0 (ft3) 10			