



**COMPENSATED
DENSITY/NEUTRON
PE LOG**

Company WOOLSEY OPERATING COMPANY, LLC.
 Well TINKER #1
 Field DIERKS EXT
 County SUMNER State KANSAS

Location: API #: 15-191-22817-0000
 2100' FSL & 1200' FWL
 SEC 24 TWP 30S RGE 1W
 Permanent Datum GROUND LEVEL Elevation 1237
 Log Measured From KELLY BUSHING 5' A.G.L
 Drilling Measured From KELLY BUSHING
 Other Services DIL/SO
 Elevation
 K.B. 1242
 D.F. 1240
 G.L. 1237

Date	6/7/20	
Run Number	ONE	
Depth Driller	3950	
Depth Logger	3950	
Bottom Logged Interval	3926	
Top Log Interval	1000	
Casing Driller	8 5/8" @ 306'	
Casing Logger	306'	
Bit Size	7 7/8	
Type Fluid in Hole	CHEMICAL MUD	CHLORIDES 2400 PPM
Density / Viscosity	9.3/53	
pH / Fluid Loss	9.5/8.8	
Source of Sample	FLOWLINE	
Rm @ Meas. Temp	.60 @ 81F	
Rmf @ Meas. Temp	.45 @ 81F	
Rmc @ Meas. Temp	.72 @ 81F	
Source of Rmf / Rmc	MEASUREMENT	
Rm @ BHT	.41 @ 117F	
Time Circulation Stopped	2 HOURS	
Time Logger on Bottom	////	
Maximum Recorded Temperature	117F	
Equipment Number	3802	
Location	HAYS, KANSAS	
Recorded By	JASON CAPPELLUCCI	
Witnessed By	BLAKE MILLER	

<<< Fold Here >>>

All interpretations are opinions based on inferences from electrical or other measurements and we cannot and do not guarantee the accuracy or correctness of any interpretation, and we shall not, except in the case of gross or willful negligence on our part, be liable or responsible for any loss, costs, damages, or expenses incurred or sustained by anyone resulting from any interpretation made by any of our officers, agents or employees. These interpretations are also subject to our general terms and conditions set out in our current Price Schedule.

Comments

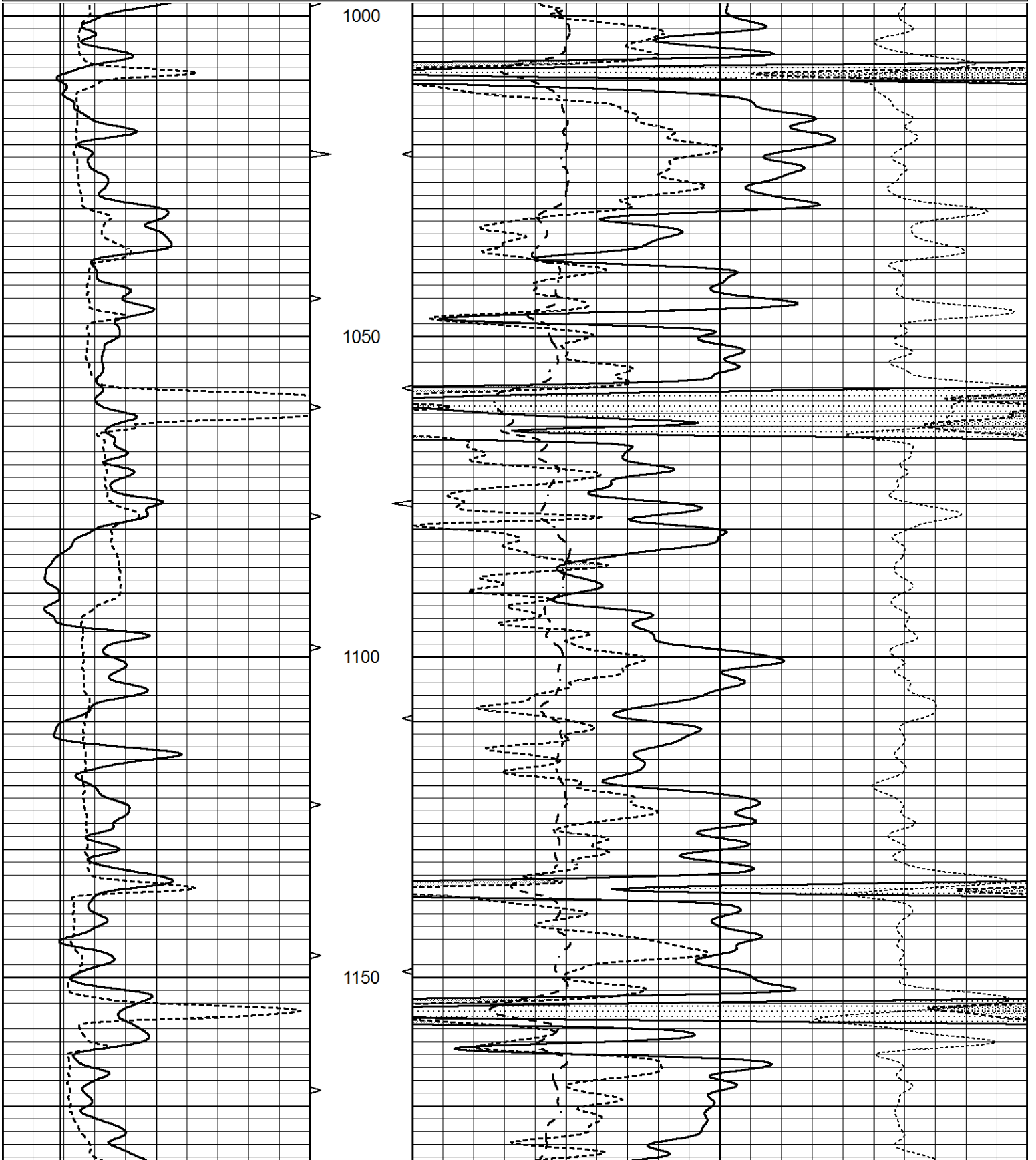
THANK YOU FOR USING ELI WIRELINE SERVICES, HAYS, KS. (785) 628-6395
 DIRECTIONS
 WICHITA, KS. - SOUTH TO MULVANE EXIT - WEST TO HWY 81 - SOUTH TO 110TH
 2 3/4 WEST - NORTH INTO

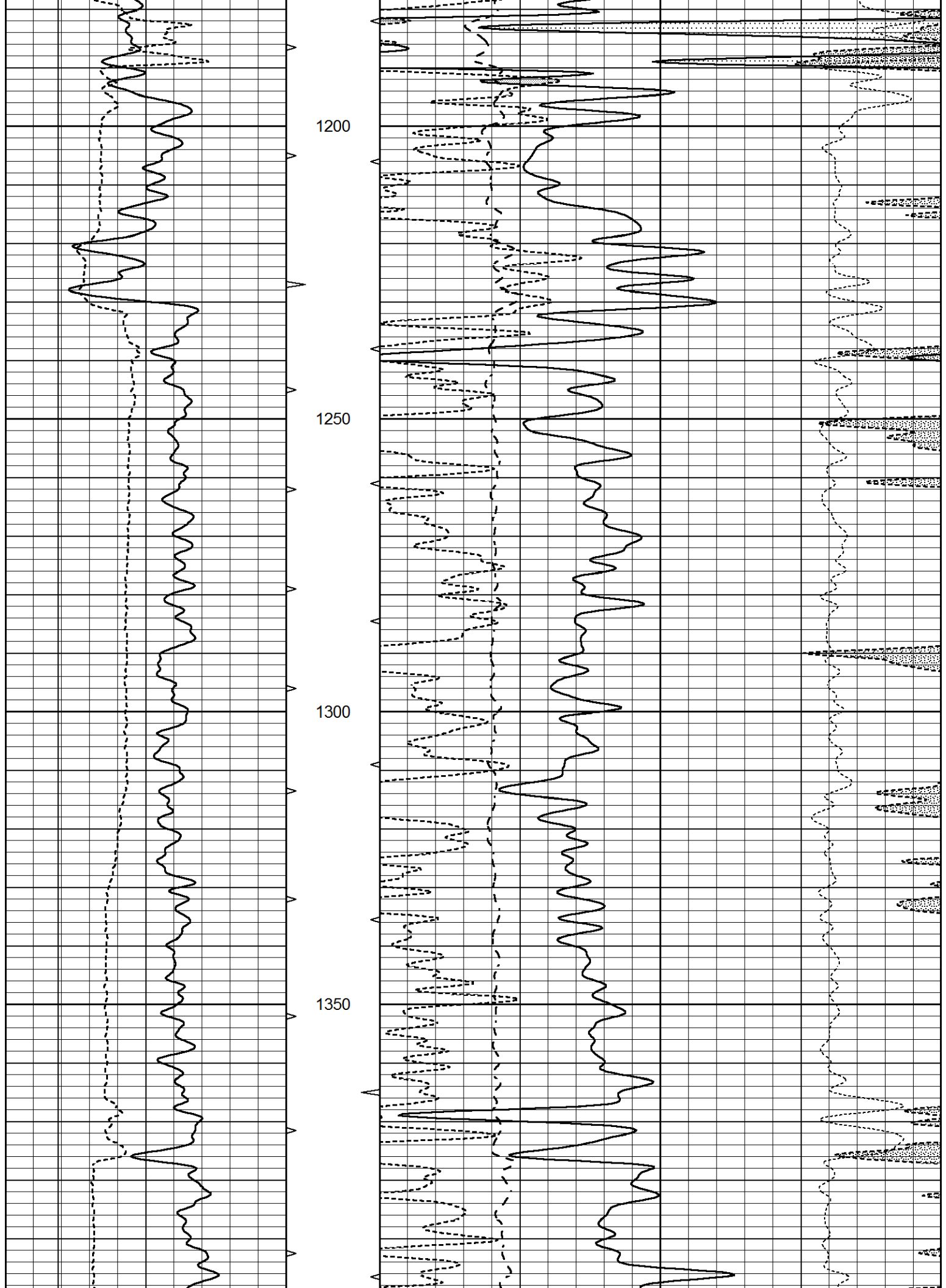


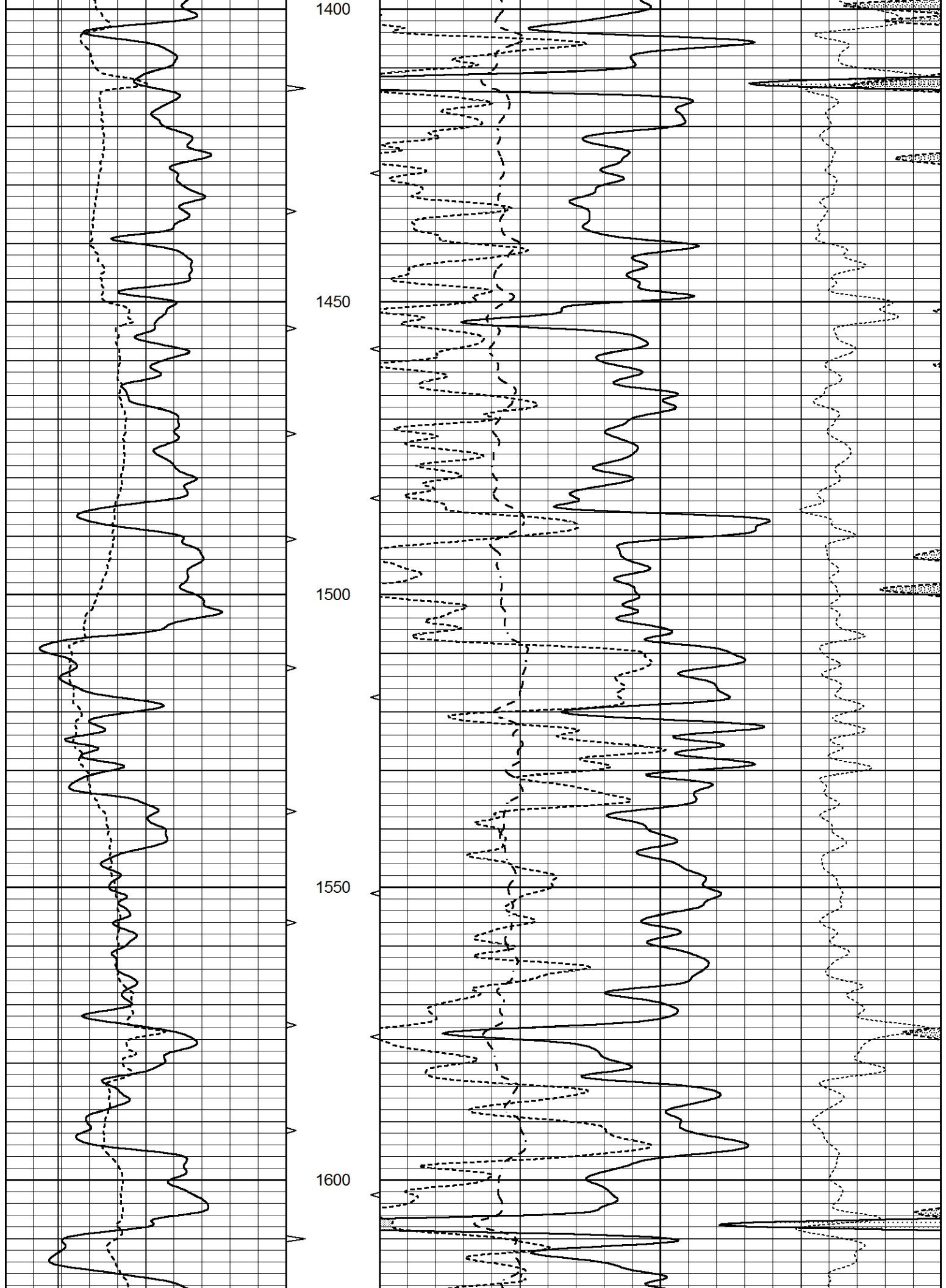
MAIN SECTION

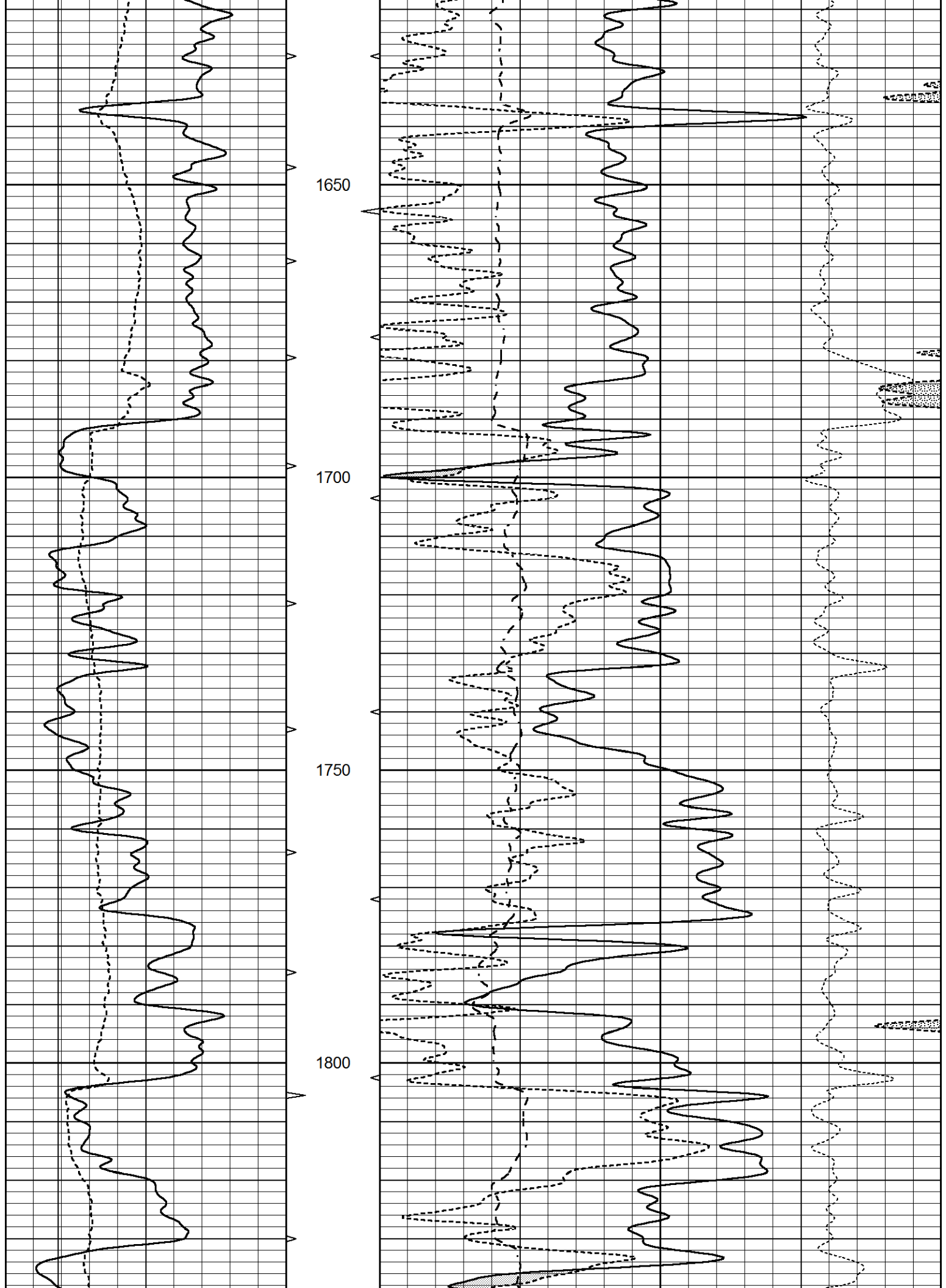
Database File 4738pe.db
 Dataset Pathname pass3.1
 Presentation Format _ldt_neu
 Dataset Creation Sun Jun 07 06:54:10 2020
 Charted by Depth in Feet scaled 1:240

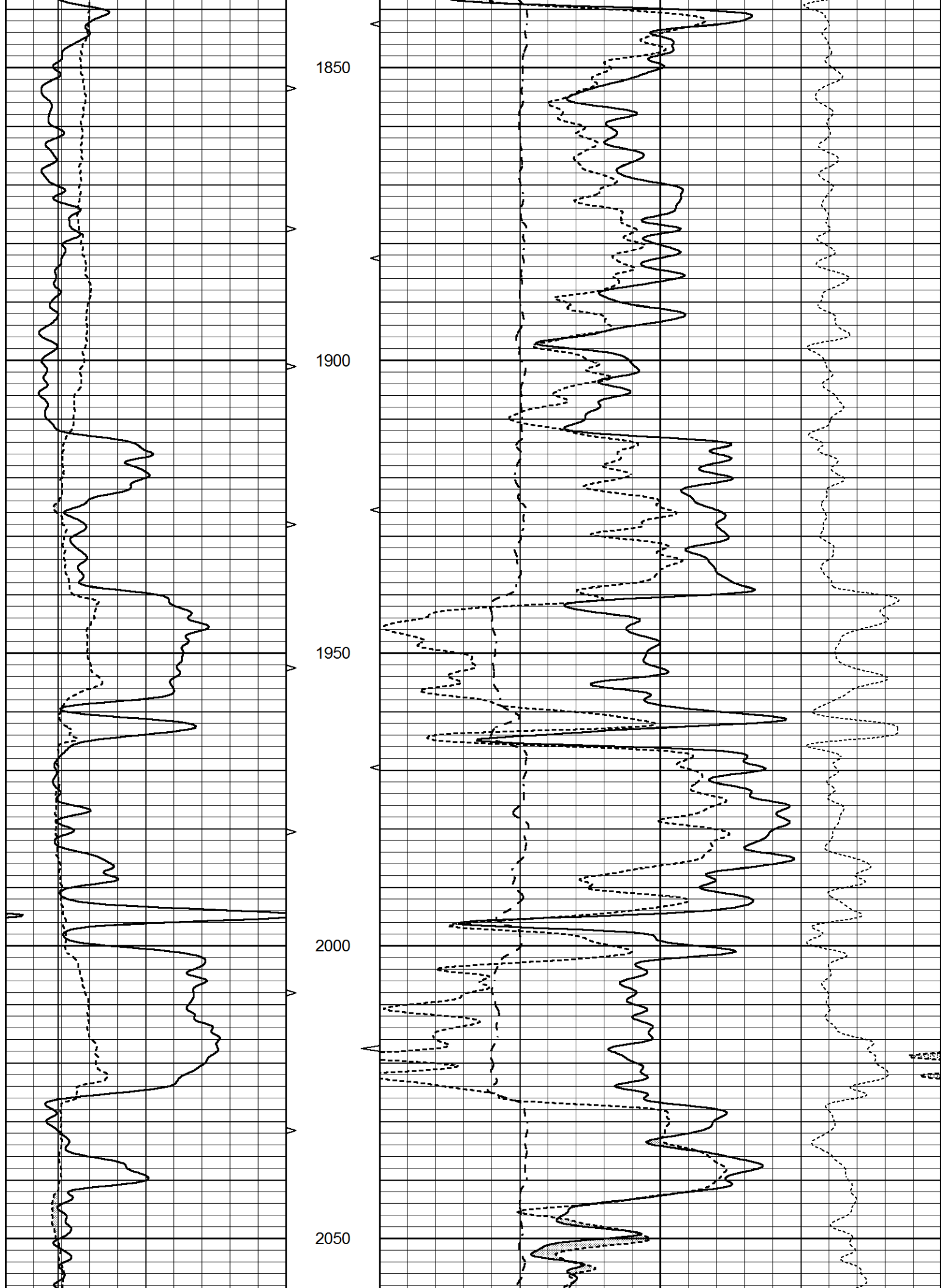
0	GAMMA RAY (GAPI)	150	ABHV	30	COMPENSATED DENSITY (pu)		-10
6	CALIPER (in)	16	10 (ft3)	0	COMPENSATED NEUTRON (pu)		-10
			TBHV	0	PE	10 -0.25	CORRECTION (g/cc) 0.25
			0 (ft3)	10			

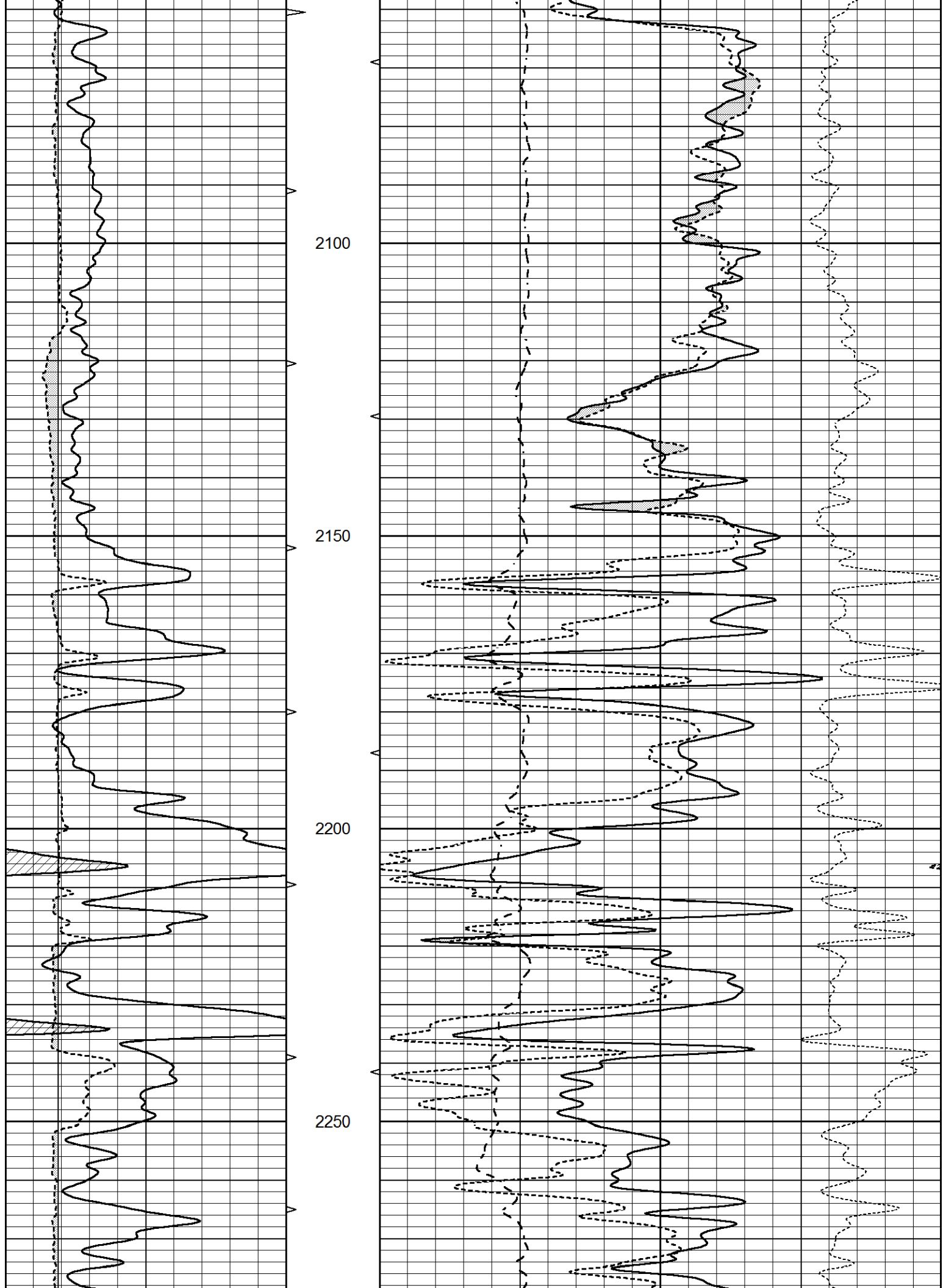


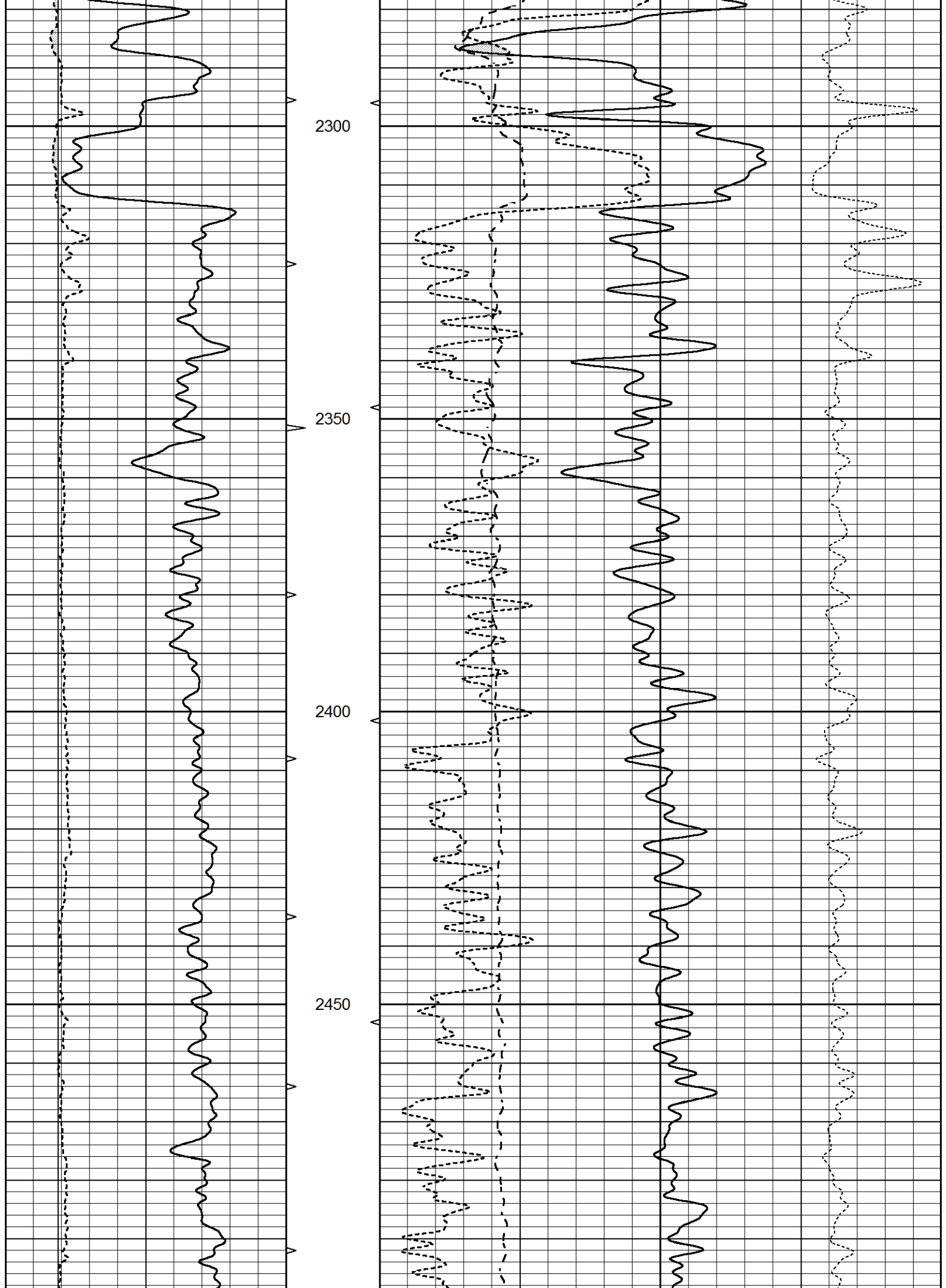


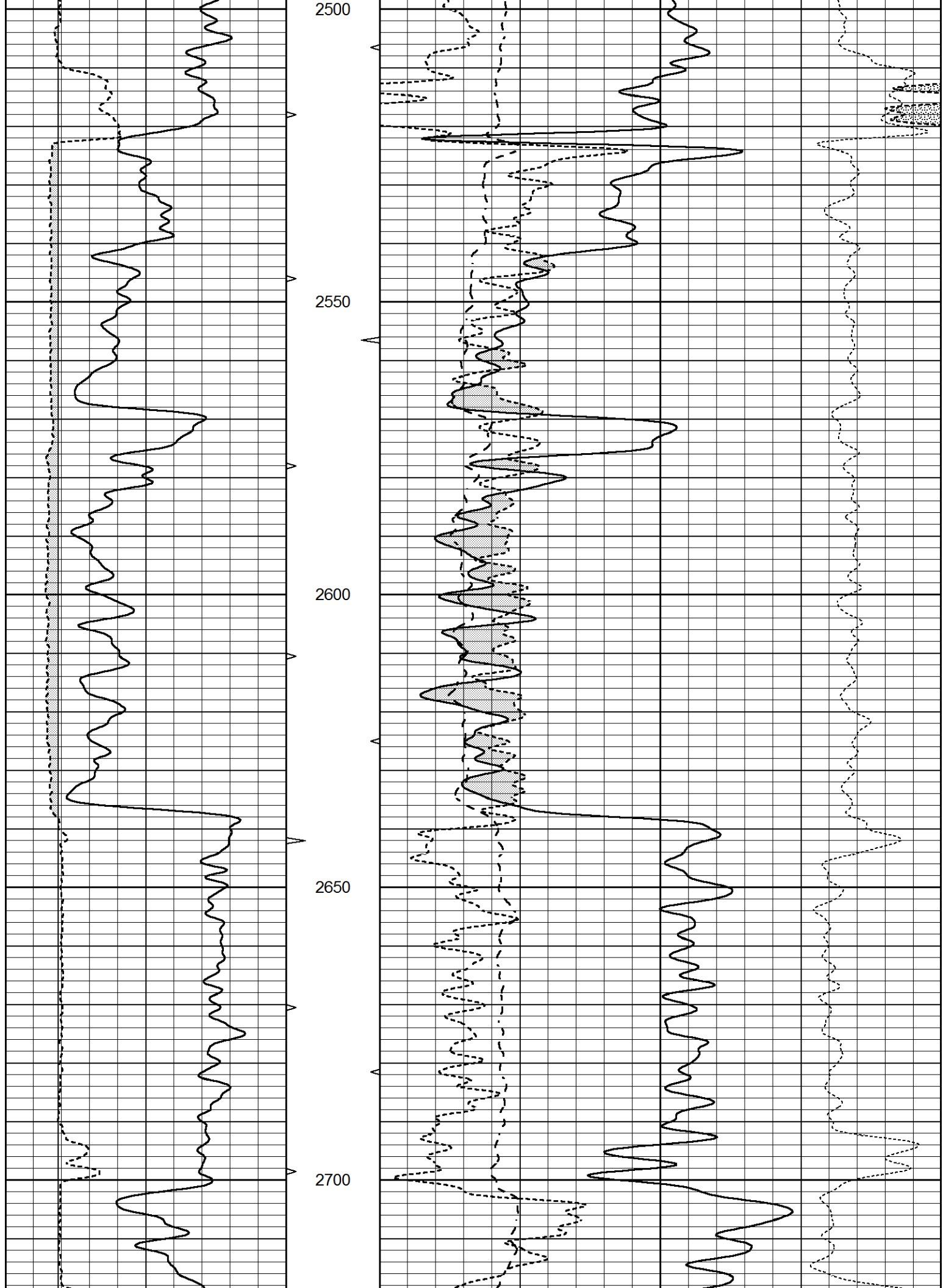


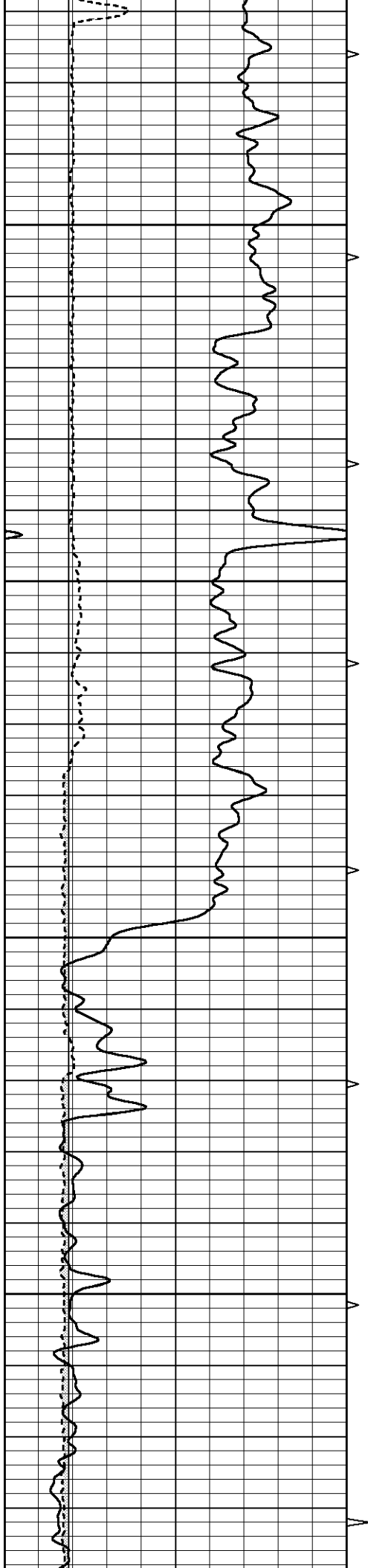










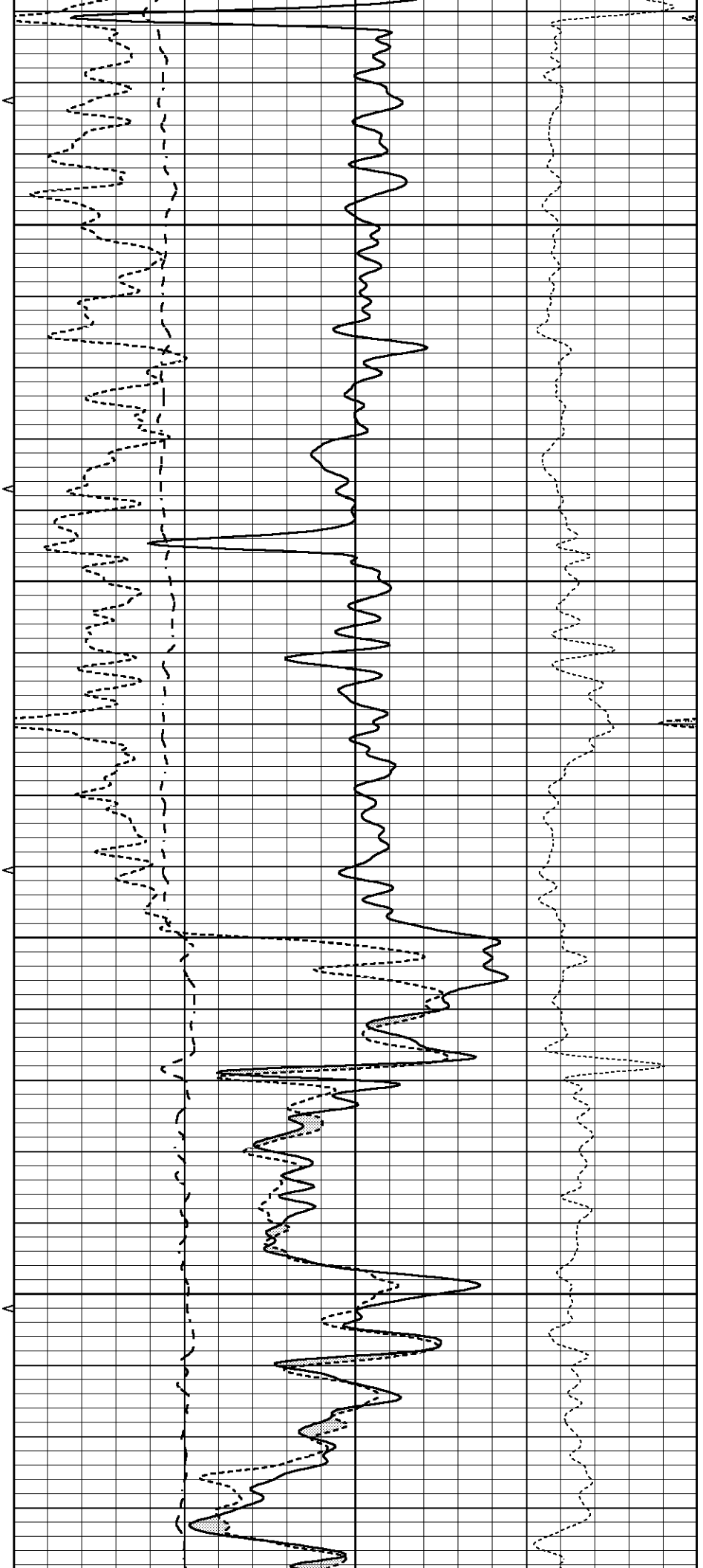


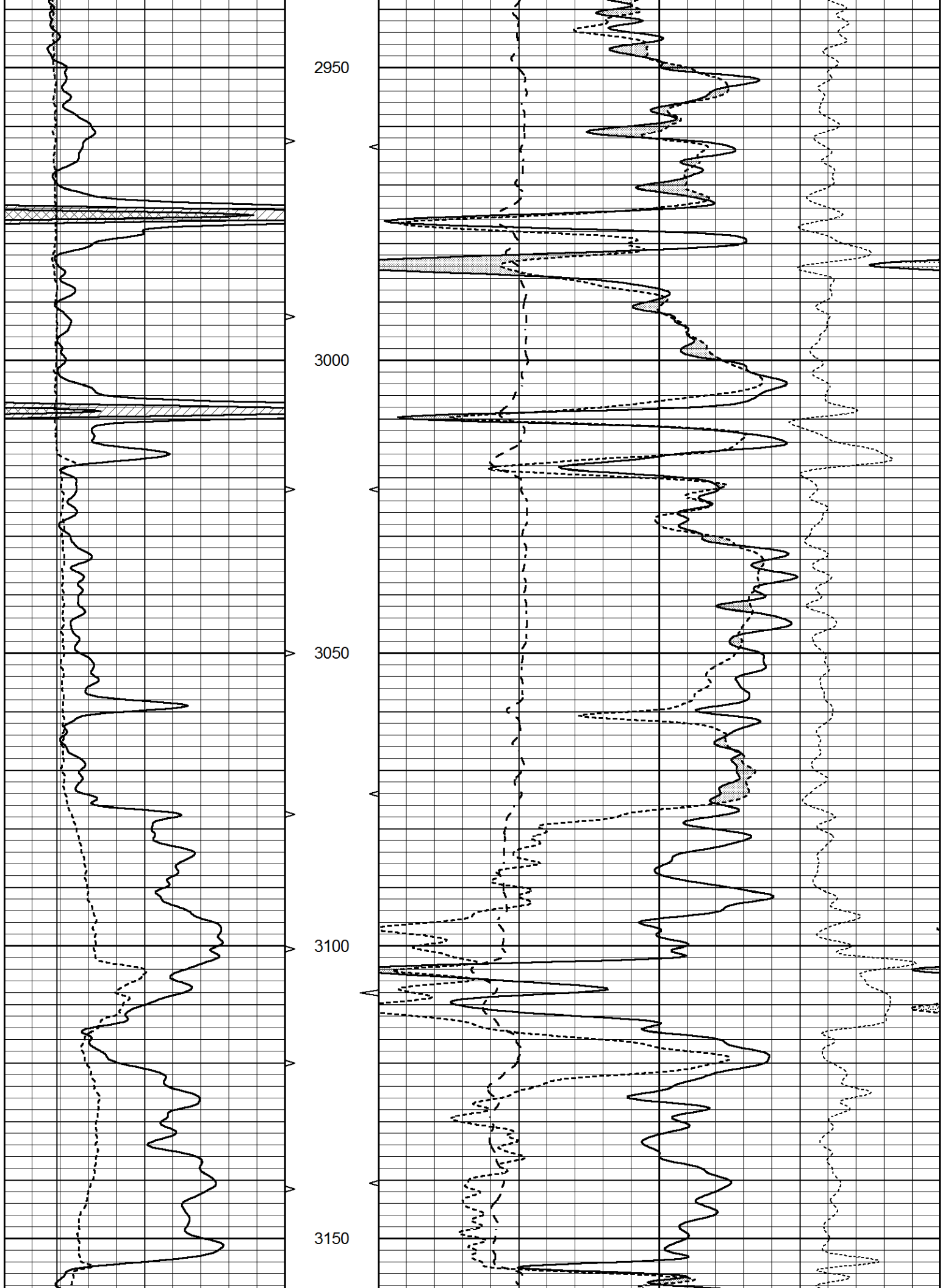
2750

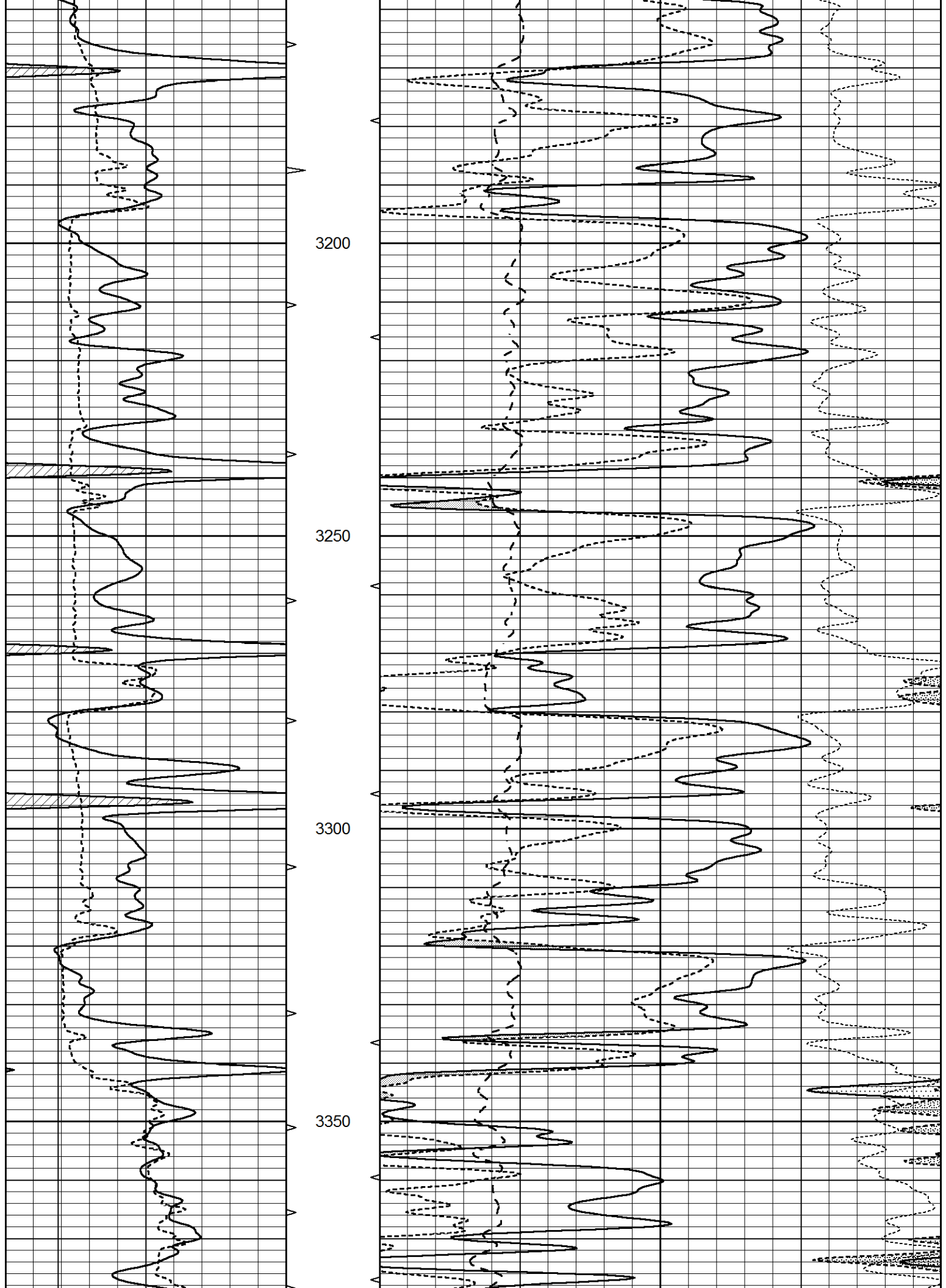
2800

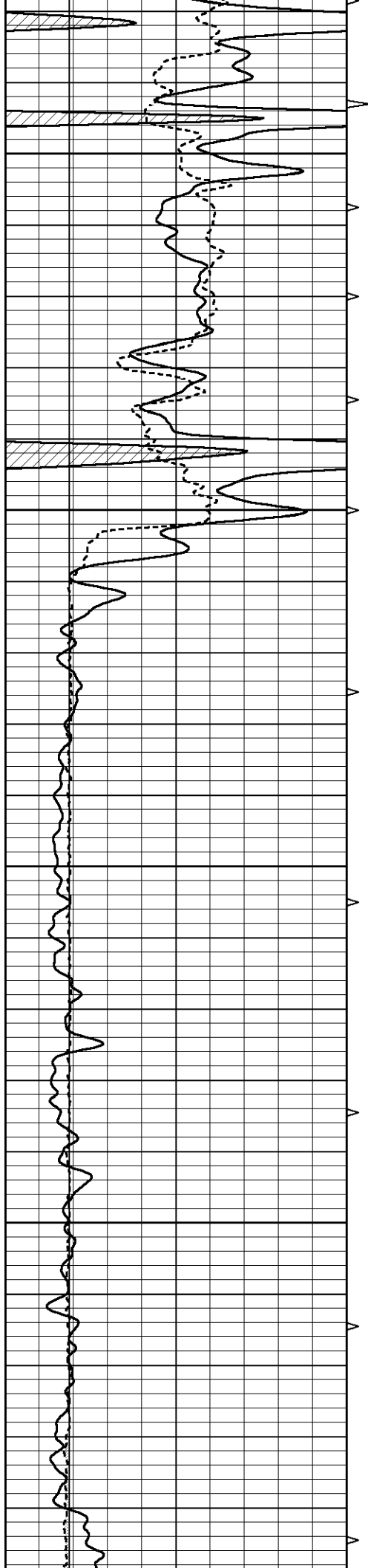
2850

2900







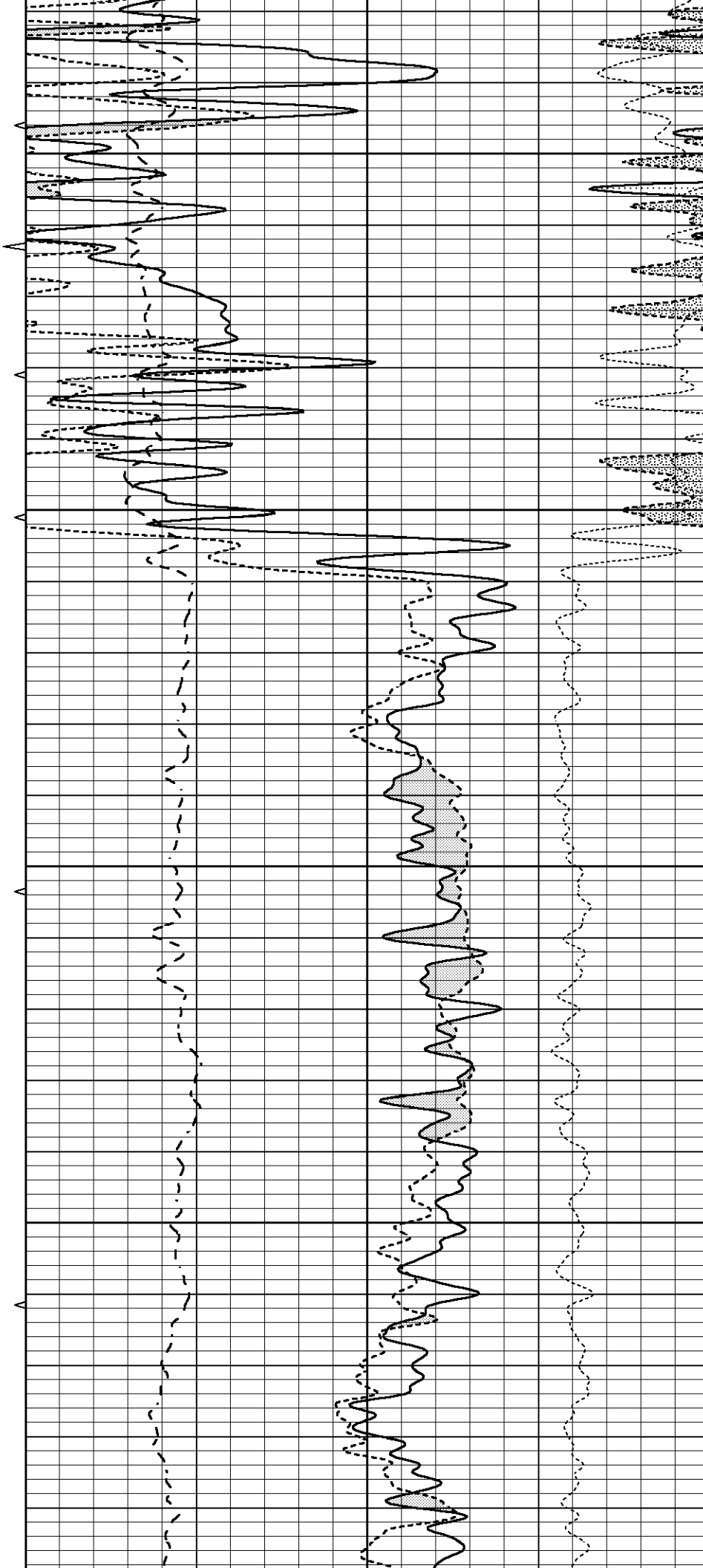


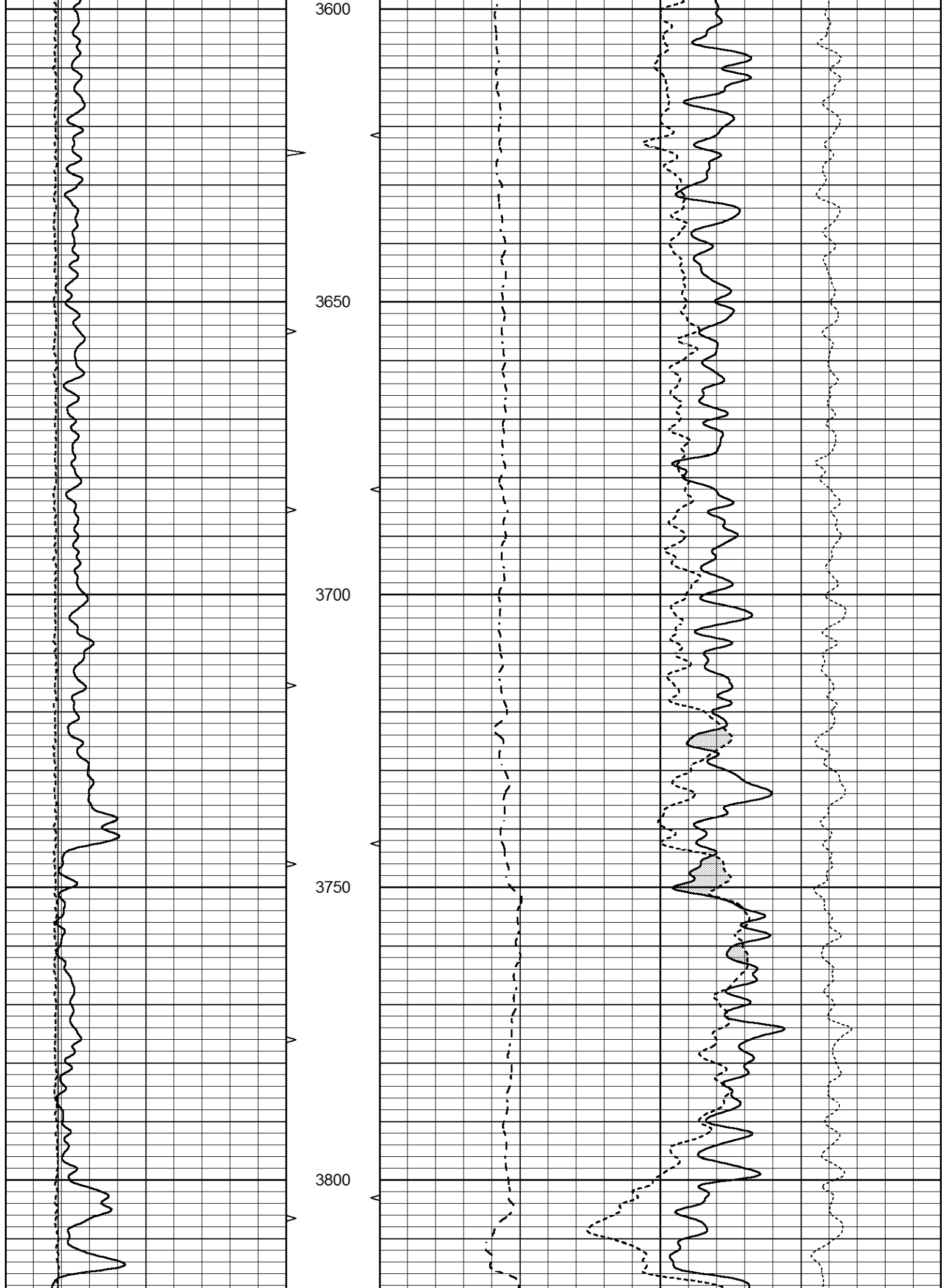
3400

3450

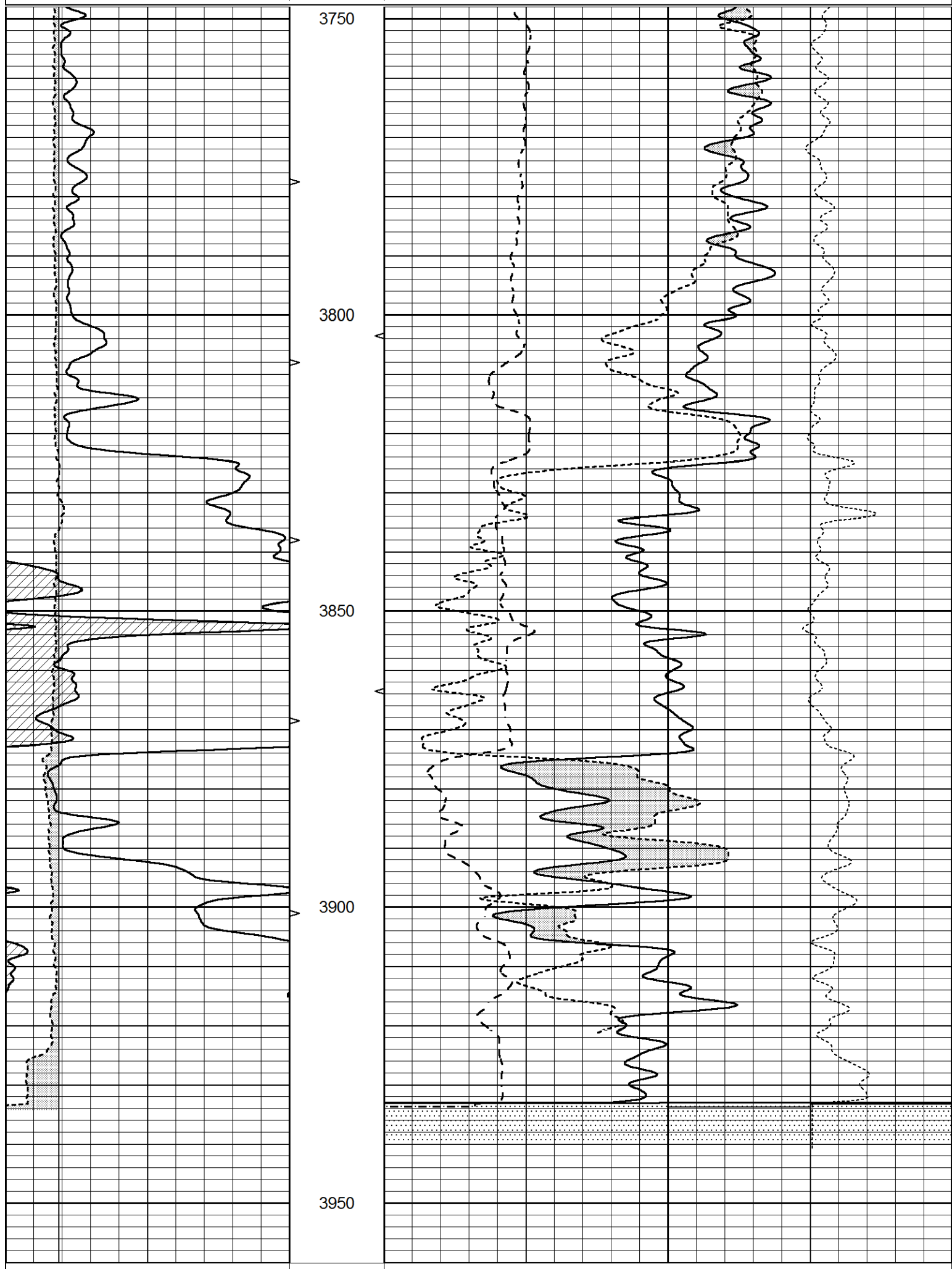
3500

3550





0 (ft3) 10



3750

3800

3850

3900

3950

0 GAMMA RAY (API) 150

20 COMPENSATED DENSITY (gm/cc) 10

GAMMA RAY (GAPI)		130	ABHV	30	COMPENSATED NEUTRON (pu)		-10
6	CALIPER (in)	16	10 (ft3)	0	30		
			TBHV	0	PE	10	-0.25 CORRECTION (g/cc)
			0 (ft3)	10			

Calibration Report

Database File 4738pe.db
 Dataset Pathname pass2.1
 Dataset Creation Sun Jun 07 04:40:17 2020

Dual Induction Calibration Report

Serial-Model: FW1410-55-Probe
 Surface Cal Performed: Tue Feb 19 11:44:18 2019
 Downhole Cal Performed: Tue Feb 19 11:44:24 2019
 After Survey Verification Performed: Tue Feb 19 11:44:27 2019

Surface Calibration

Loop:	Readings			References			Results	
	Air	Loop		Air	Loop		m	b
Deep	0.011	0.656	V	1.000	400.000	mmho/m	618.595	-5.524
Medium	-0.000	0.731	V	1.000	464.000	mmho/m	632.856	1.197
Internal:	Zero	Cal		Zero	Cal		m	b
Deep	0.007	0.649	V	0.000	400.000	mmho/m	623.784	-4.595
Medium	0.004	0.743	V	0.000	464.000	mmho/m	627.284	-2.251

Downhole Calibration

	Readings			References			Results	
	Zero	Cal		Zero	Cal		m'	b'
Deep	-0.824	395.917	mmho/m	-0.976	397.550	mmho/m	1.004	-0.149
Medium	3.565	471.327	mmho/m	3.468	471.590	mmho/m	1.001	-0.099
LL3		7.503	V		1500.000	Ohm-m		
		0.001	V		20.000	Ohm-m		
		-7.481	V		3745.000	mmho-m		

After Survey Verification

	Readings			Targets			Results	
	Zero	Cal		Zero	Cal		m'	b'
Deep	0.000	0.000	mmho/m	-0.824	395.917	mmho/m	1.000	0.000
Medium	0.000	0.000	mmho/m	3.565	471.327	mmho/m	1.000	0.000
LL3		0.000	Ohm-m		1500.000	Ohm-m		
		0.000	Ohm-m		20.000	Ohm-m		
		0.000	mmho-m		3745.000	mmho-m		

Litho Density Calibration Report

Serial: 140703
 Model: V4_10P
 Source Number: 74GBq-19

Master Calibration

Performed: Thu May 21 10:43:15 2020

	Background	Aluminum	Magnesium	
Window 1	531.08	5459.71	23833.72	cps
Window 2	42.08	1230.06	5814.64	cps
Window 4	232.81	1236.34	5296.40	cps
Window 5	564.62	8687.43	16546.07	cps

Window 5	304.02	3887.43	10348.07	cps
Window 6	44.20	1453.03	2846.27	cps
Window 8	270.67	2786.28	5209.33	cps

Bulk Density	-	2.6020	1.6830	g/cc
Pe	-	3.0000	2.5070	b/e

LS Alpha:	: -1.8459	SS Alpha:	: -0.7701	LS CPE:	: 1.1427
LS Beta:	: 125609.8082	SS Beta:	: 19396.7594	SS CPE:	: 1.5007

Before Survey Background Counts Verification Performed: Wed Dec 31 18:00:00 1969

Window 1	0.00	cps
Window 2	0.00	cps
Window 4	0.00	cps
Window 5	0.00	cps
Window 6	0.00	cps
Window 8	0.00	cps

After Survey Background Counts Verification Performed: Wed Dec 31 18:00:00 1969

Window 1	0.00	cps
Window 2	0.00	cps
Window 4	0.00	cps
Window 5	0.00	cps
Window 6	0.00	cps
Window 8	0.00	cps

Lithodensity Caliper Calibration Performed: Thu May 21 10:43:15 2020

Results	Readings	References (in)		Gain	Offset
Low	High	Low	High		
4564.4	7712.2	8.0	14.0	0.0	-1.1

Before Survey Caliper Verification Performed:

	Reference	Reading
Caliper (in)	_____	_____

After Survey Caliper Verification Performed:

	Reference	Reading
Caliper (in)	_____	_____

Compensated Neutron Calibration Report

Serial Number:	080621PMC
Tool Model:	NABORS

PRE-SURVEY VERIFICATION

Detector	Readings	Measured	Target
Short Space	cps		
Long Space	cps	pu	pu

POST-SURVEY VERIFICATION

Detector

Readings

Measured

Target

Short Space

cps

Long Space

cps

pu

pu

Gamma Ray Calibration Report

Serial Number:

7

Tool Model:

Probe1

Performed:

Tue Dec 10 10:02:55 2019

Calibrator Value:

1.0

GAPI

Background Reading:

0.0

cps

Calibrator Reading:

1.0

cps

Sensitivity:

0.4800

GAPI/cps