

MICRO LOG



Company RL INVESTMENT, LLC.
 Well PRATT "A" #4-35
 Field HOXIE WEST
 County SHERIDAN
 State KANSAS

Company RL INVESTMENT, LLC.
 Well PRATT "A" #4-35
 Field HOXIE WEST
 County SHERIDAN State KANSAS

Location: API #: 15-179-21466-0000
 1700' FNL & 1005' FWL
 SEC 35 TWP 8S RGE 29W
 Permanent Datum GROUND LEVEL Elevation 2818
 Log Measured From KELLY BUSHING 7' A.G.L.
 Drilling Measured From KELLY BUSHING
 Other Services CDL/CNL/DIL
 Elevation K.B. 2825
 D.F. 2823
 G.L. 2818

Date	05/08/20
Run Number	TWO
Depth Driller	4460
Depth Logger	4459
Bottom Logged Interval	4458
Top Log Interval	3400
Casing Driller	8 5/8" @ 266
Casing Logger	266
Bit Size	7 7/8"
Type Fluid in Hole	CHEMICAL MUD
Density / Viscosity	9.1/62
pH / Fluid Loss	6.8/11.0
Source of Sample	FLOWLINE
Rm @ Meas. Temp	1.3@ 65F
Rmf @ Meas. Temp	.98@ 65F
Rmc @ Meas. Temp	1.56 @ 65F
Source of Rmf / Rmc	MEASURED
Rm @ BHT	.70@ 120F
Time Circulation Stopped	2 HOURS
Time Logger on Bottom	////
Maximum Recorded Temperature	120F
Equipment Number	1523
Location	HAYS, KANSAS
Recorded By	GUS PFANENSTIEL
Witnessed By	RYAN PFEIFER

<<< Fold Here >>>

All interpretations are opinions based on inferences from electrical or other measurements and we cannot and do not guarantee the accuracy or correctness of any interpretation, and we shall not, except in the case of gross or willful negligence on our part, be liable or responsible for any loss, costs, damages, or expenses incurred or sustained by anyone resulting from any interpretation made by any of our officers, agents or employees. These interpretations are also subject to our general terms and conditions set out in our current Price Schedule.

Comments

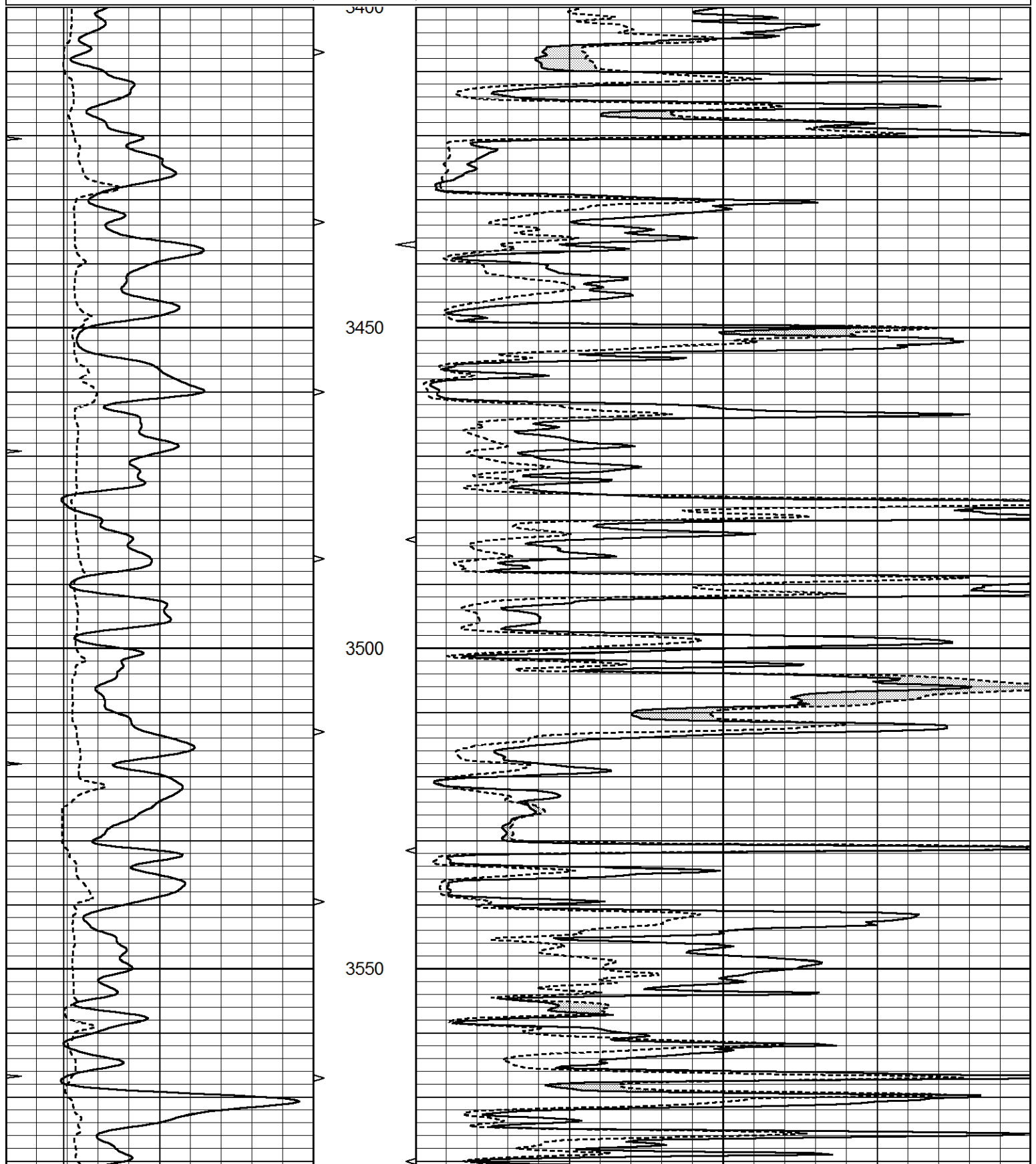
THANK YOU FOR USING ELI WIRELINE, HAYS, KS. (785) 628-6395
 DIRECTIONS: HOXIE 3 S TO 30 RD., 5 W TO 50 RD.,
 1/2 S, E INTO.

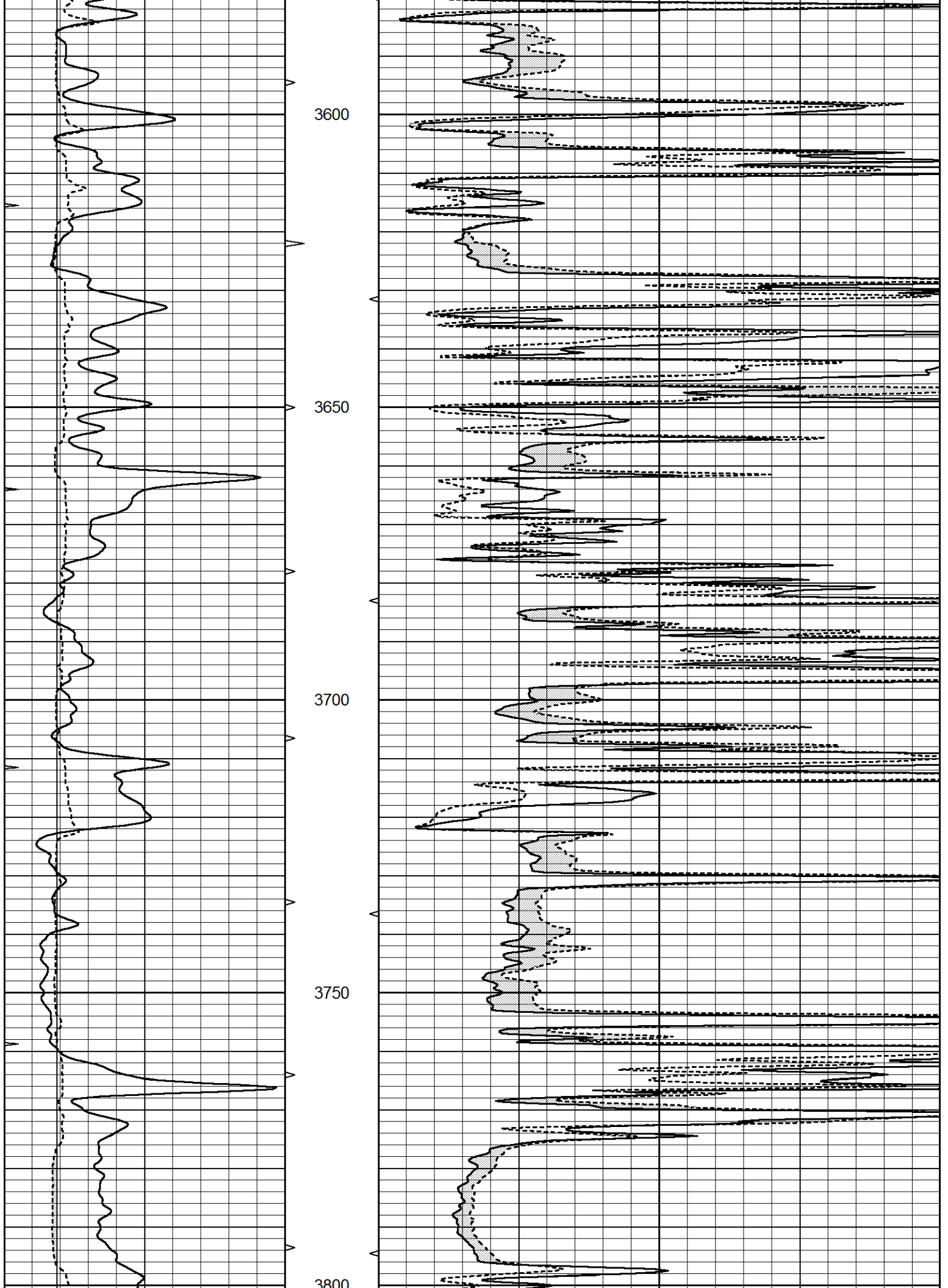


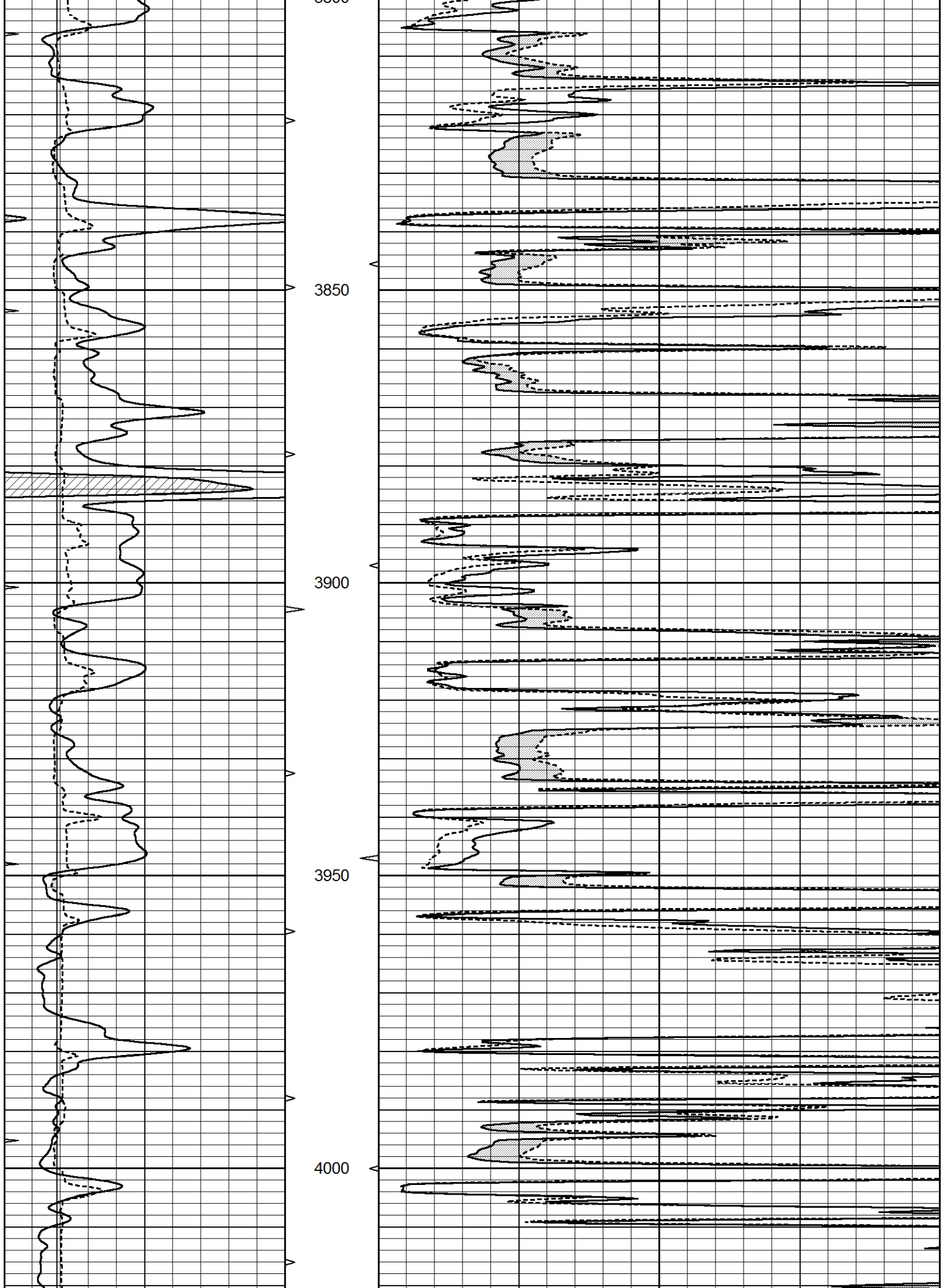
MAIN PASS

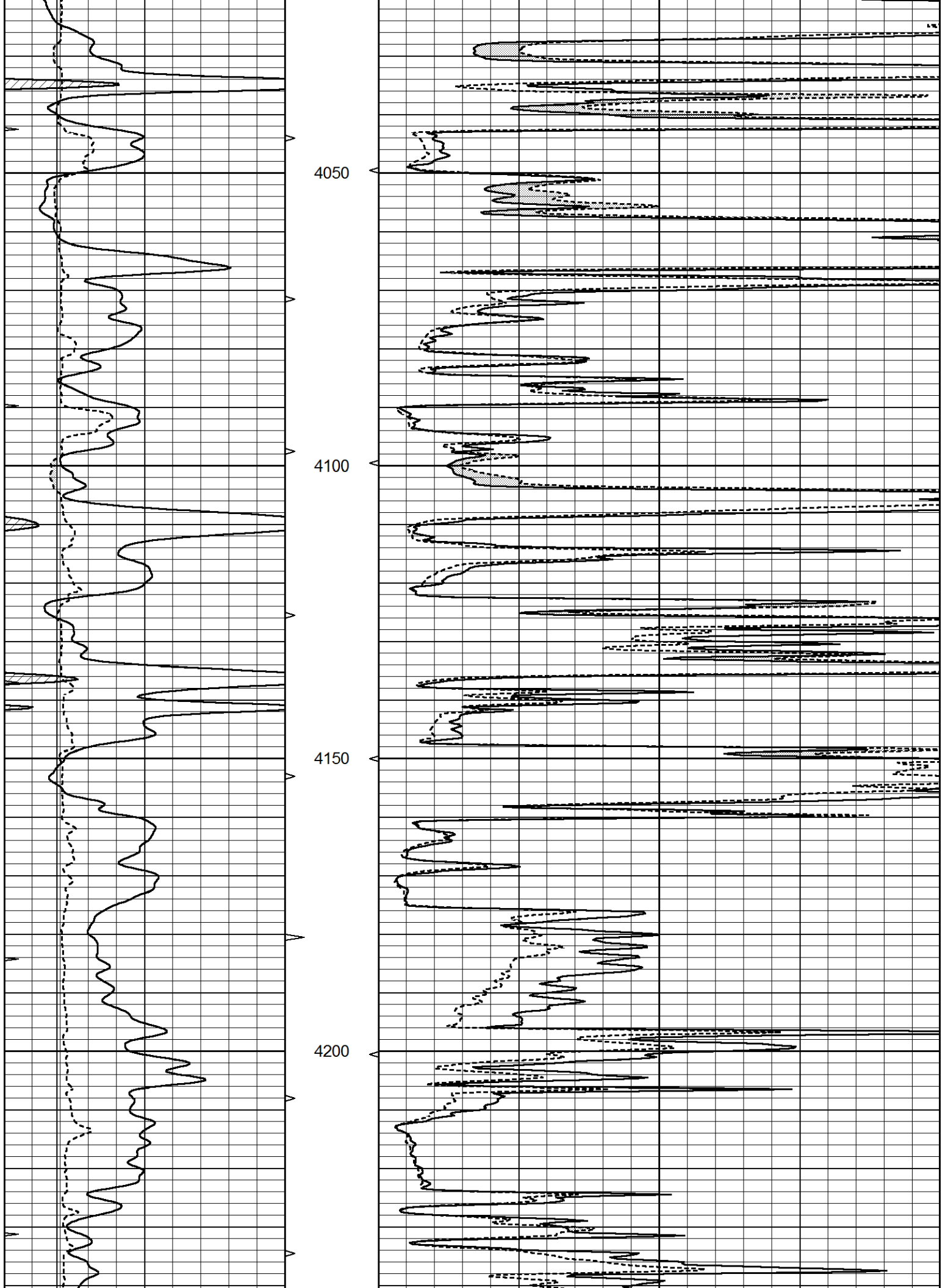
Database File 4688ddn.db
 Dataset Pathname pass5.1
 Presentation Format _micro
 Dataset Creation Fri May 08 18:36:00 2020
 Charted by Depth in Feet scaled 1:240

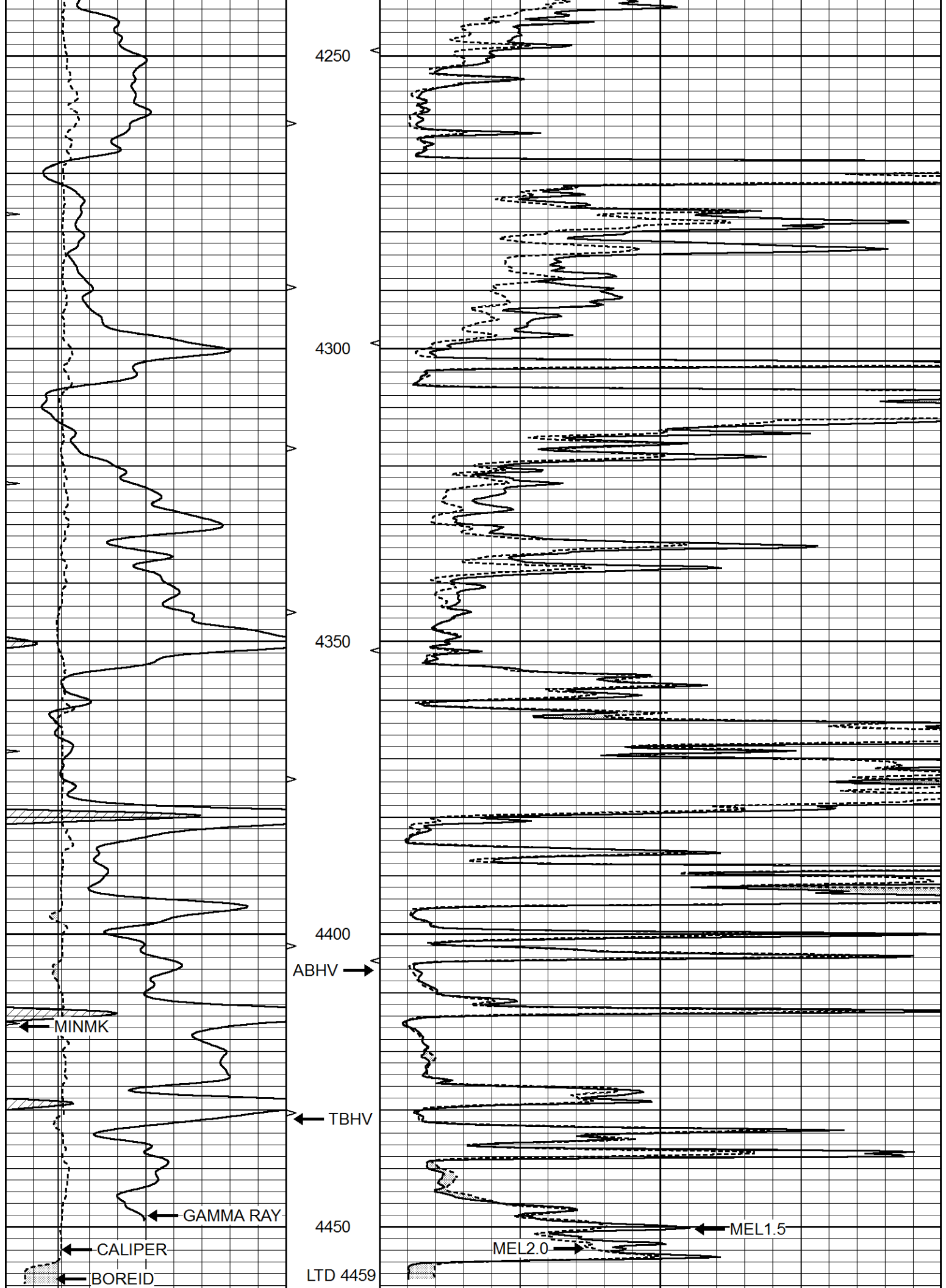
0	GAMMA RAY (GAPI)	150	ABHV	0	MEL1.5 (Ohm-m)	40
6	CALIPER (in)	16	10 (ft3)	0	MEL2.0 (Ohm-m)	40
0	MINMK	20	TBHV			
			0 (ft3)	10		











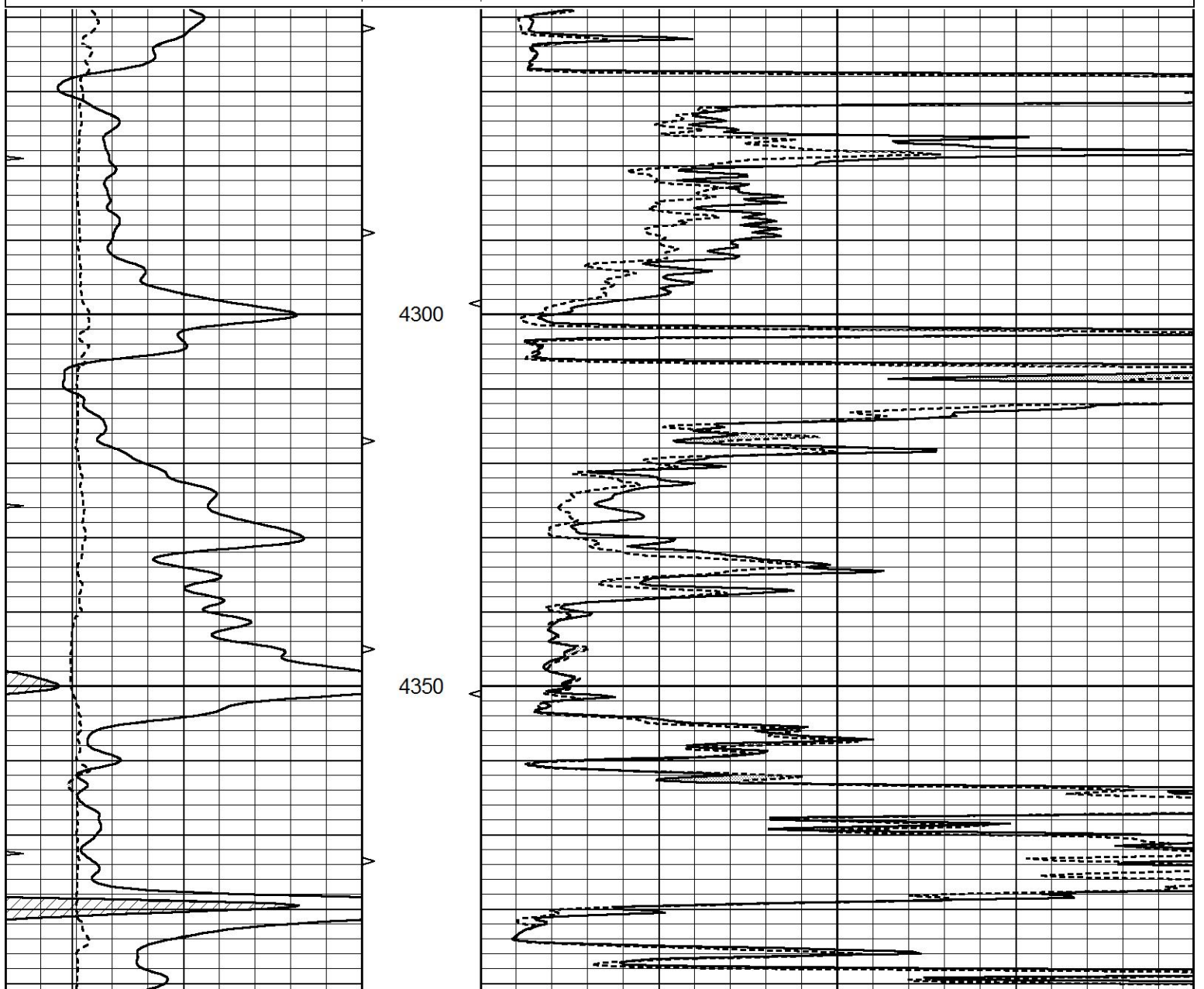
0	GAMMA RAY (GAPI)	150	ABHV	0	MEL1.5 (Ohm-m)	40
6	CALIPER (in)	16	10 (ft3)	0	MEL2.0 (Ohm-m)	40
0	MINMK	20	TBHV			
			0 (ft3)	10		

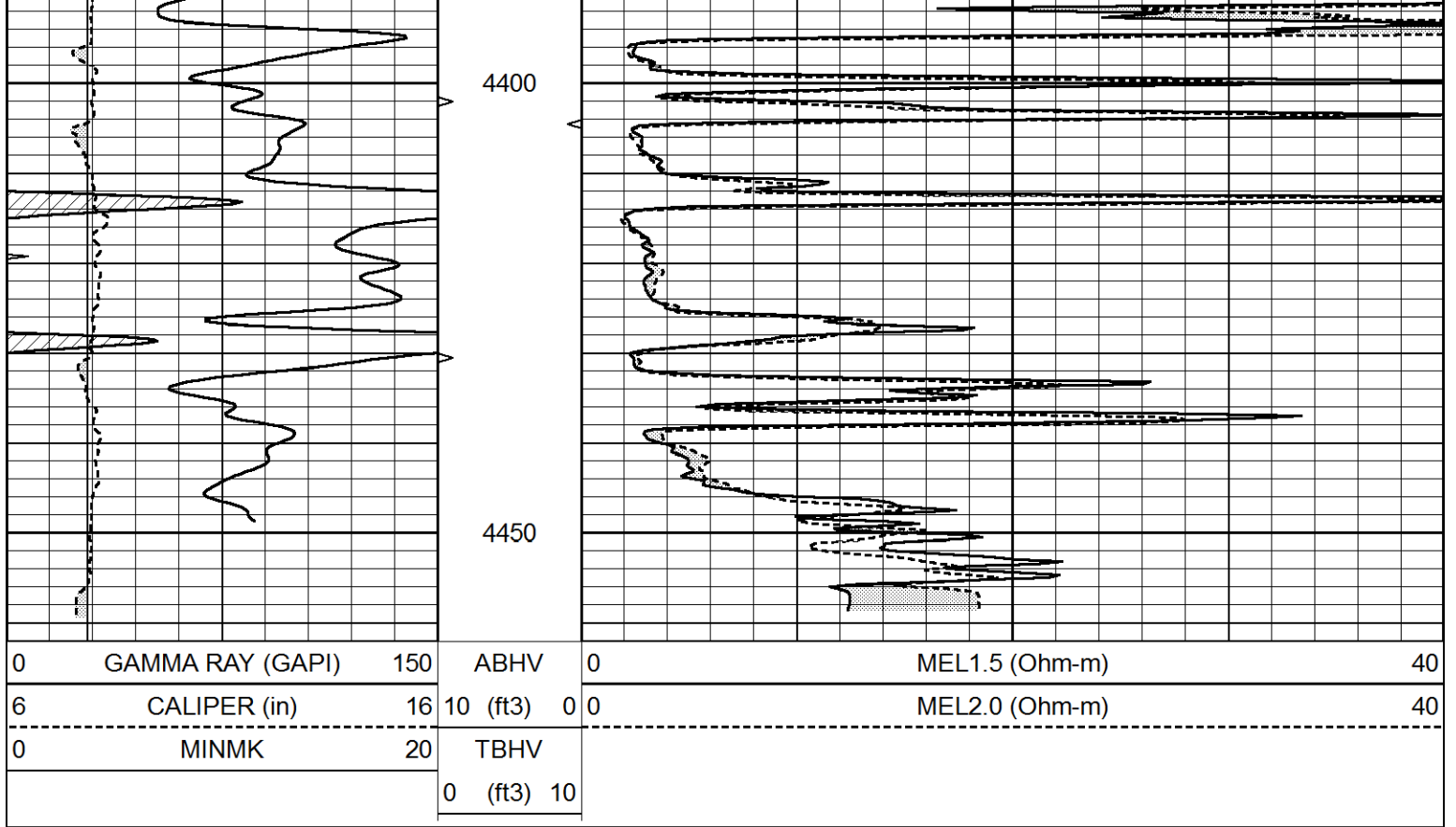


REPEAT SECTION

Database File 4688ddn.db
 Dataset Pathname pass4
 Presentation Format _micro
 Dataset Creation Fri May 08 18:04:32 2020
 Charted by Depth in Feet scaled 1:240

0	GAMMA RAY (GAPI)	150	ABHV	0	MEL1.5 (Ohm-m)	40
6	CALIPER (in)	16	10 (ft3)	0	MEL2.0 (Ohm-m)	40
0	MINMK	20	TBHV			
			0 (ft3)	10		





Calibration Report

Database File 4688ddn.db
 Dataset Pathname pass4
 Dataset Creation Fri May 08 18:04:32 2020

MICRO Calibration Report

Serial Number:	Micro1	
Tool Model:	ProbeL	
Performed:	Thu Apr 02 16:23:04 2020	
Caliper Calibration:	Gain=3.980	Offset=5.151
References	Low Cal	High Cal
Readings	9.500	13.000
	0.308	2.032
1.5" Calibration:	Gain=36.134	Offset=-1.000
References	Low Cal	High Cal
Readings	0.000	20.000
	0.004	0.832
2" Calibration:	Gain=38.000	Offset=-0.800
References	Low Cal	High Cal
Readings	0.000	20.000
	0.022	0.793

Gamma Ray Calibration Report

Serial Number:	GR5	
Tool Model:	OPEN	
Performed:	Sun Jan 05 05:38:27 2020	
Calibrator Value:	1.0	GAPI
Background Reading:	0.0	cps

Background Reading:

0.0

cps

Calibrator Reading:

1.0

cps

Sensitivity:

0.5000

GAPI/cps