



MIDWEST WIRELINE

RADIATION GUARD LOG

Company: Blake Exploration, LLC
 Well: Schmitt #3
 Field: Oakley
 County: Logan
 State: Kansas

Company: Blake Exploration, LLC
 Well: Schmitt #3
 Field: Oakley
 County: Logan
 State: Kansas

Location: API #: 15-109-21606-00-00
 330' FNL & 1100' FWL
 SEC 11 TWP 11S RGE 32W
 Permanent Datum: Ground Level Elevation 3038'
 Log Measured From: Kelly Bushing
 Drilling Measured From: Kelly Bushing
 Other Services: None
 Elevation: K.B. 3046', D.F. N/A, G.L. 3038'

Date	9/5/2020
Run Number	One
Depth Driller	4594'
Depth Logger	4570'
Bottom Logged Interval	4569'
Top Log Interval	250'
Casing Driller	8.625" @ 278'
Casing Logger	270'
Bit Size	7.875"
Type Fluid in Hole	Chemical
Salinity, ppm CL	3000
Density / Viscosity	9.2 60
pH / Fluid Loss	11.0 7.6
Source of Sample	FLOWLINE
Rm @ Meas. Temp	.80 @ 80
Rmt @ Meas. Temp	0.60 @ 80
Rmc @ Meas. Temp	1.08 @ 80
Source of Rmf / Rmc	CHARTS
Rm @ BHT	0.52 @ 122
Operating Rig Time	2 Hours
Max Rec. Temp. F	122
Equipment Number	P-108
Location	HAYS
Recorded By	D. Schmidt
Witnessed By	Michael Davignon

<<< Fold Here >>>

All interpretations are opinions based on inferences from electrical or other measurements and Midwest Wireline LLC cannot and does not guarantee the accuracy or correctness of any interpretation, and Midwest Wireline LLC will not be liable or responsible for any loss, costs, damages, or expenses incurred or sustained by anyone resulting from any interpretation made by any of our officers, agents or employees.

Comments

N/A DENOTES NOT AVAILABLE OR NON-APPLICABLE.

Oakley (Hwy 40 and Hwy 83)
 1/2 South, West into

Log Measured From: Kelly Bushing 8 Ft. Above Permanent Datum

THANK YOU FOR USING MIDWEST WIRELINE LLC
 785-625-3858

Your Midwest Wireline Crew		This Log Record Was Witnessed By	
Engineer: D. Schmidt	Operator:	Primary Witness: Michael Davignon	Secondary Witness:
Operator:	Operator:	Secondary Witness:	Secondary Witness:
Operator:		Secondary Witness:	

Company	Offset (ft)	Schematic	Description	Length (ft)	O.D. (in)	Weight (lb)
---------	-------------	-----------	-------------	-------------	-----------	-------------

Sensor	Offset (ft)	Schematic	Description	Length (ft)	O.D. (in)	Weight (lb)
GR	15.00		GR-M&W (89)	3.00	3.50	50.00
LGRD	11.00		LGRD-M&W (177) Simlec Long Guard	4.00	3.50	40.00
SCAL	5.10		SWN-M&W-SP (SP162-87)	10.50	4.00	190.00
SWN	4.45					
SP	0.20					

Dataset: blake_schmitt 3.db: field/well/Rag/pass3.7
 Total length: 17.50 ft
 Total weight: 280.00 lb
 O.D.: 4.00 in

Log Variables

DatabaseC:\ProgramData\Warrior\Data\blake_schmitt 3.db
 Dataset field/well/Rag/pass3.7/_vars_

Top - Bottom

AIR_HOLE? No	BOREID in 7.875	BOTTEMP degF 100	CASEOD in 5.5	CASETHCK in 0	MudWgt lb/gal 9.5	NPORSEL Limestone	PERFS 0
SPSHIFT mV 140	SRFTEMP degF 0	TDEPTH ft 0					

Variable Description

AIR_HOLE? : Air Filled?
 BOREID : Borehole I.D.
 BOTTEMP : Bottom Hole Temperature
 CASEOD : Casing O.D.
 CASETHCK : Casing Thickness
 MudWgt : Mud Weight

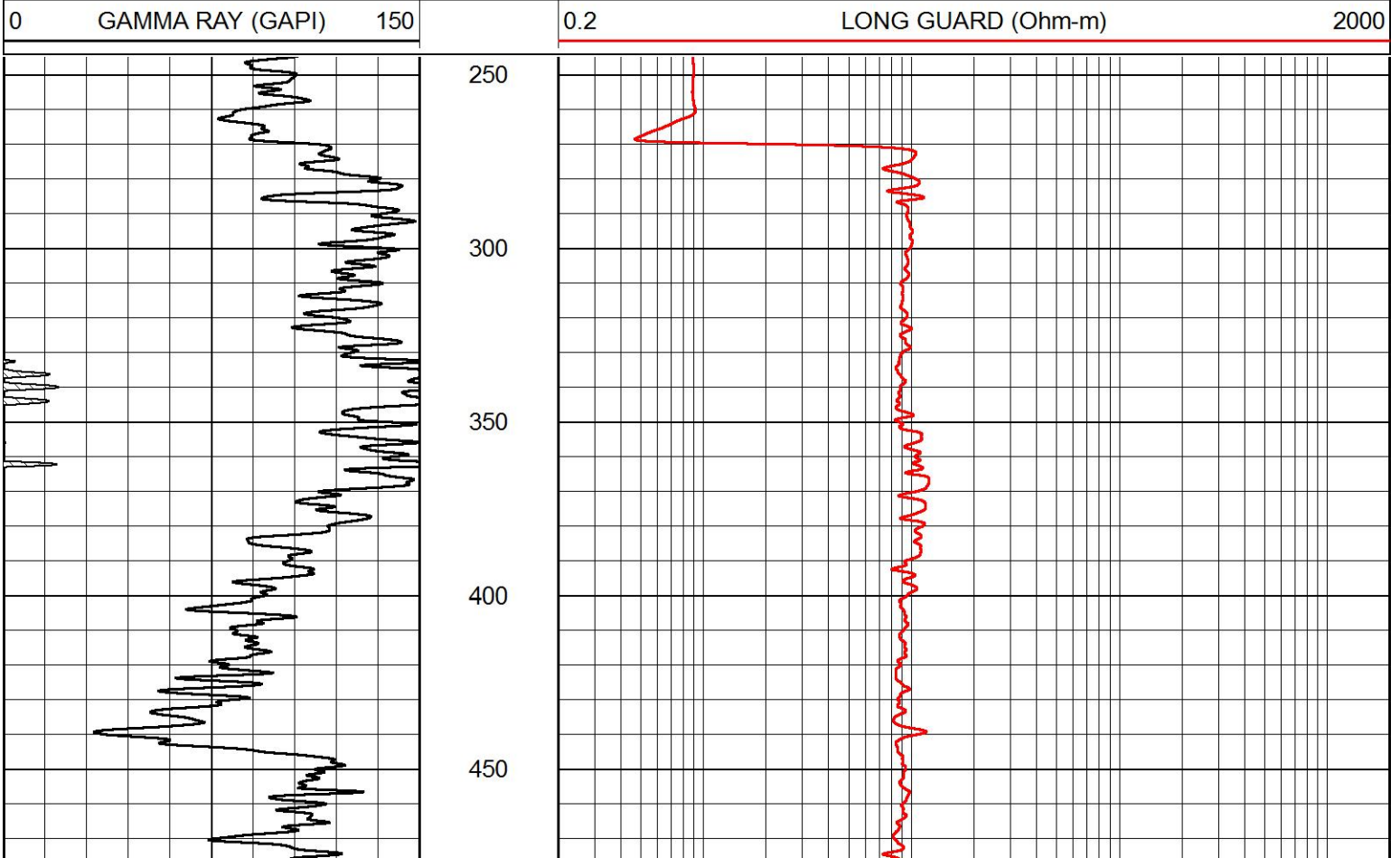
NPORSEL : Neutron Porosity Curve Select
 PERFS : Perforation Flag
 SPSHIFT : S.P. Baseline Offset
 SRFTEMP : Surface Temperature
 TDEPTH : Total Depth

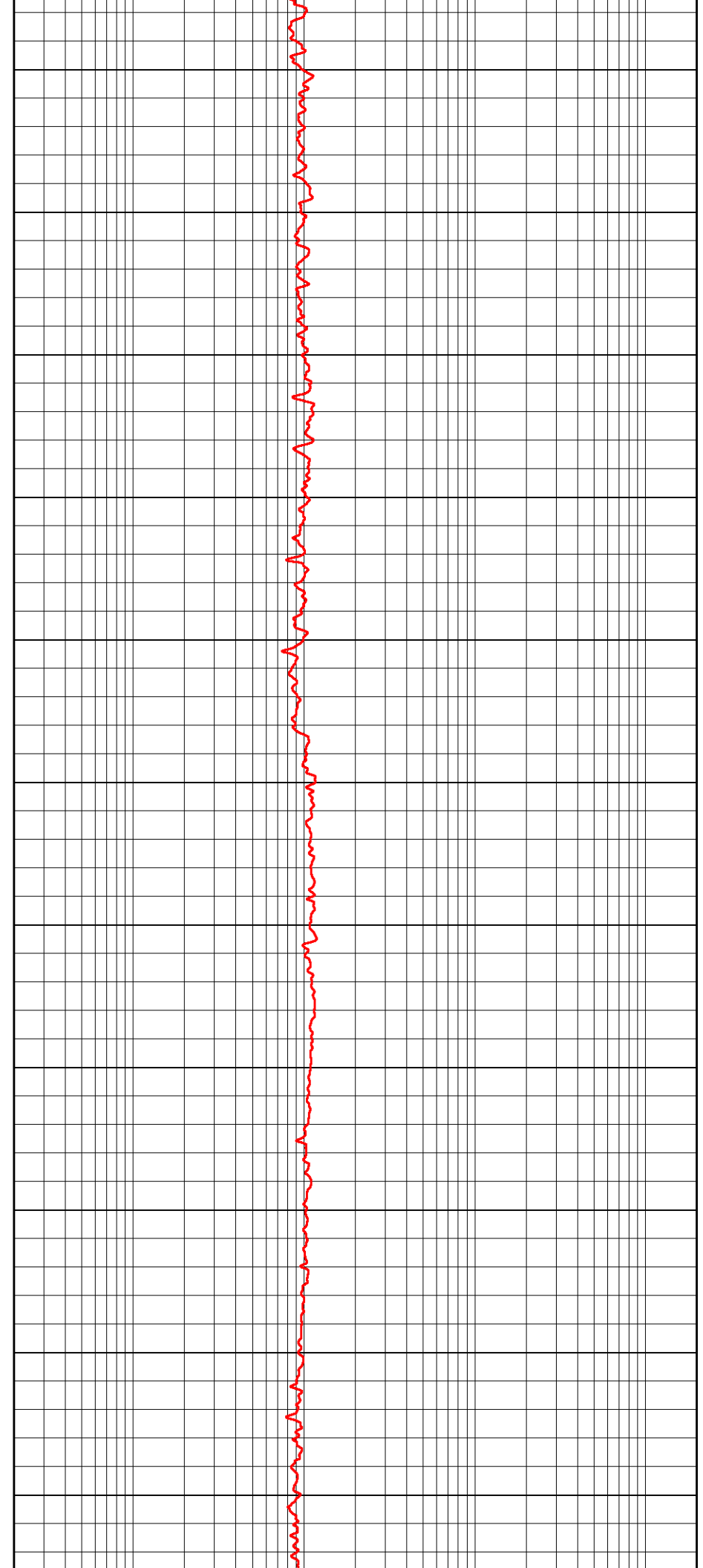
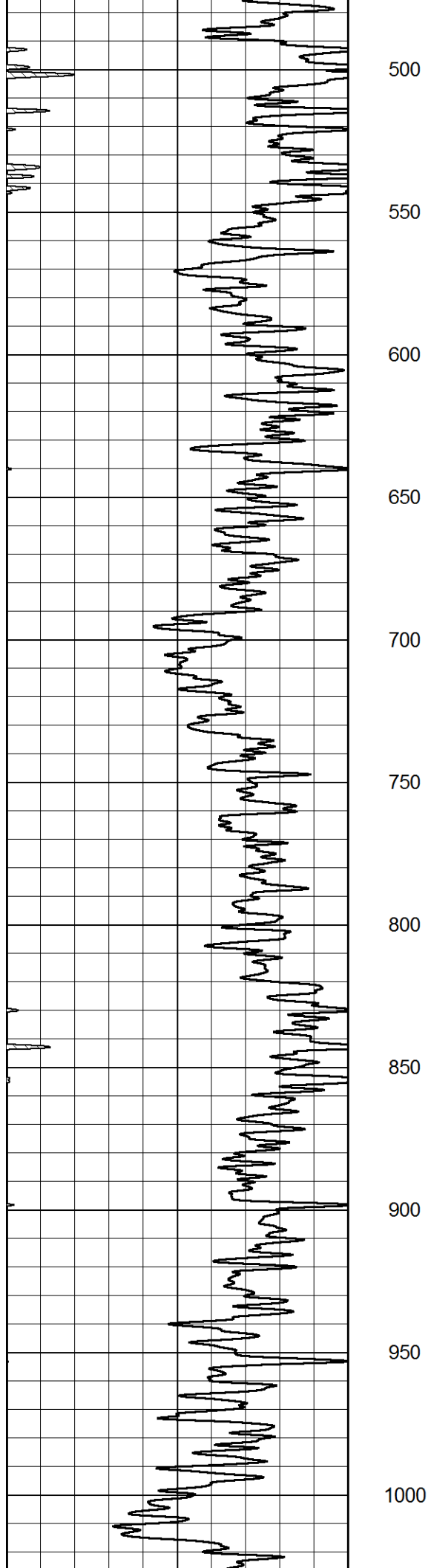


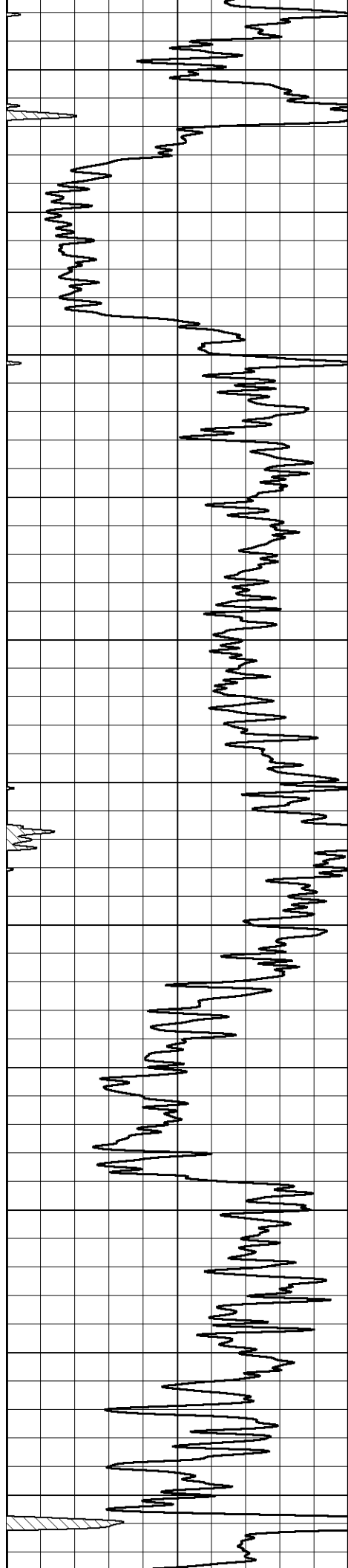
MIDWEST WIRELINE

MAIN PASS

Database File blake_schmitt 3.db
 Dataset Pathname Rag/pass4.1
 Presentation Format rag2in
 Dataset Creation Sat Sep 05 14:19:38 2020
 Charted by Depth in Feet scaled 1:600







1050

1100

1150

1200

1250

1300

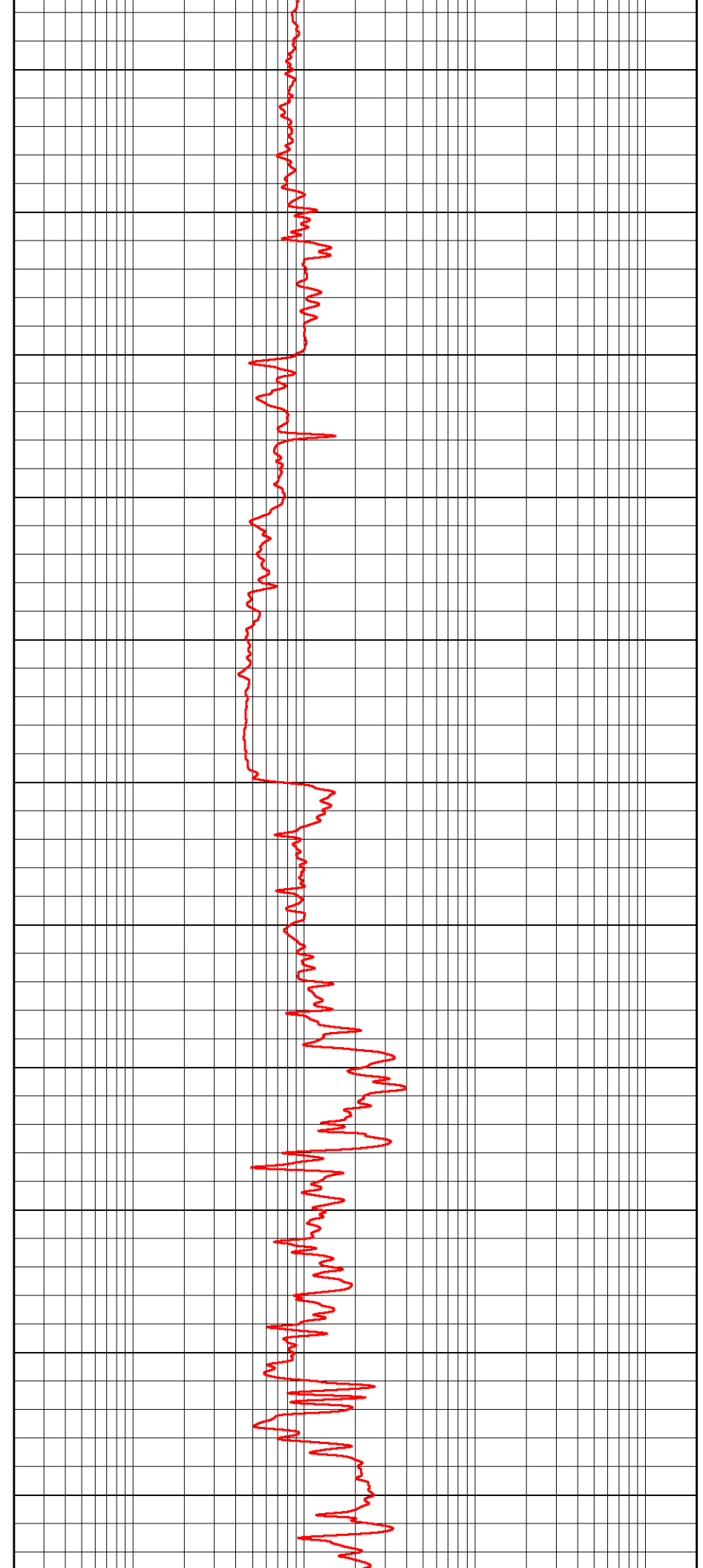
1350

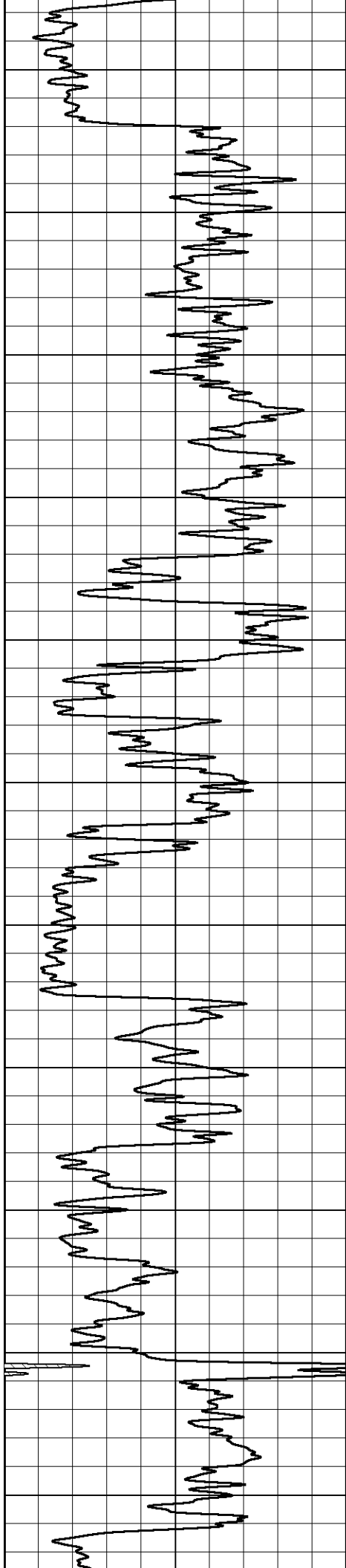
1400

1450

1500

1550





1600

1650

1700

1750

1800

1850

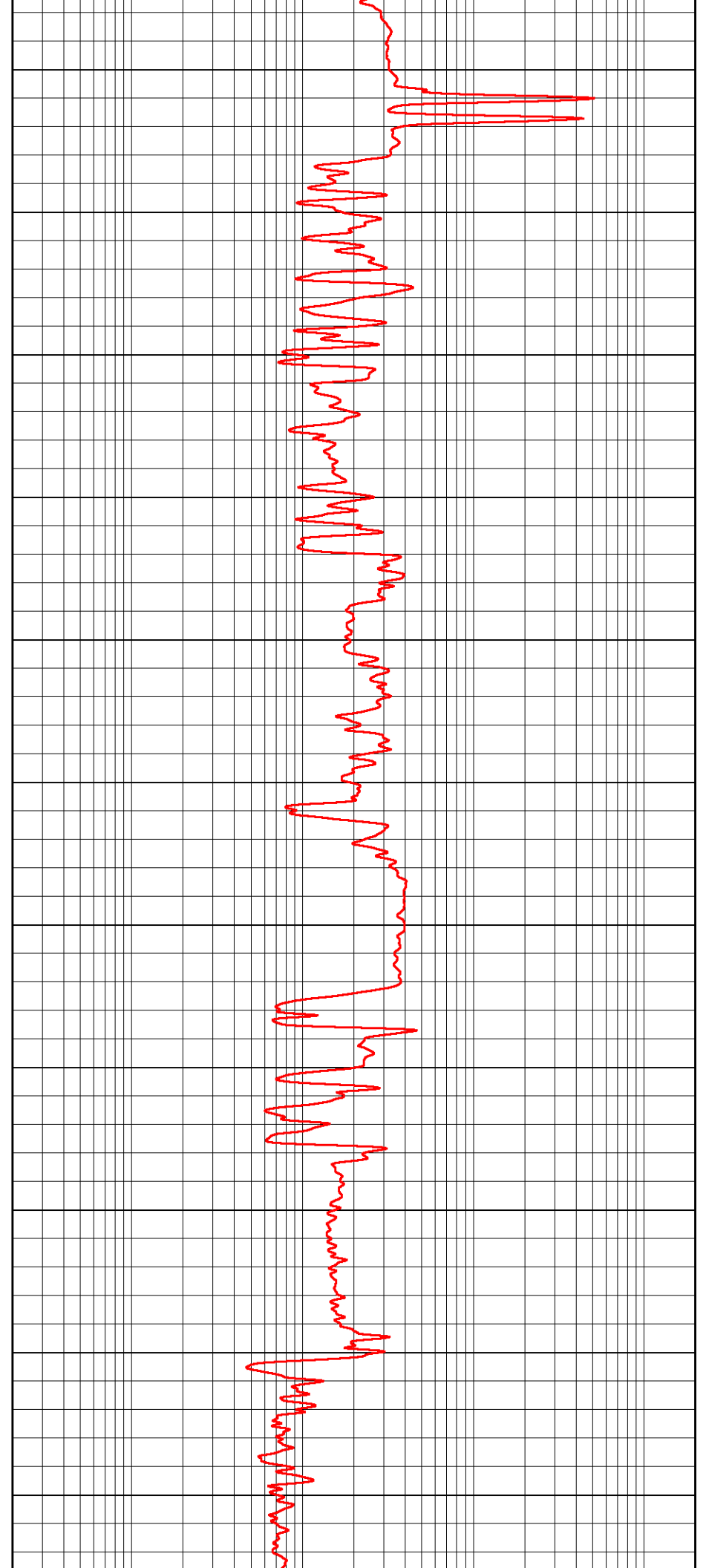
1900

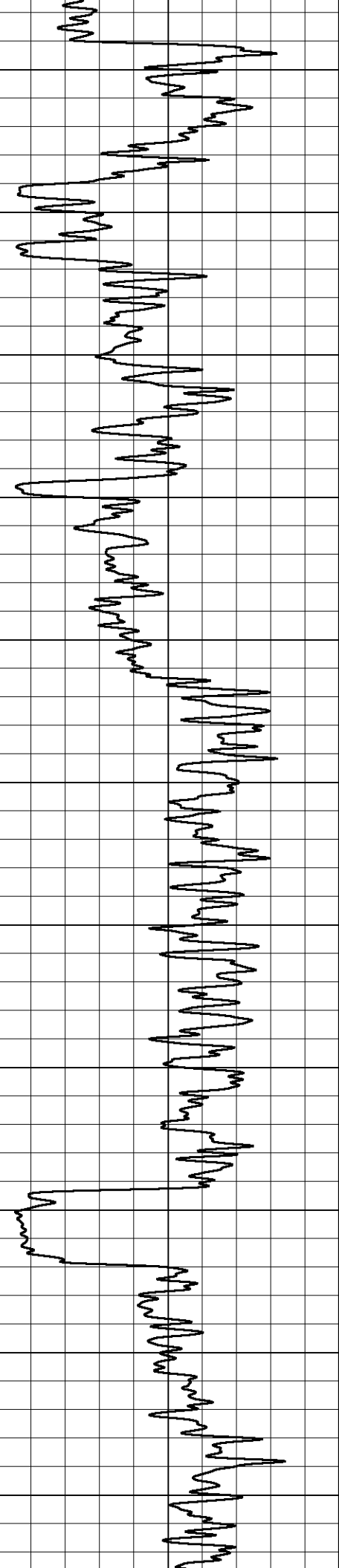
1950

2000

2050

2100





2150

2200

2250

2300

2350

2400

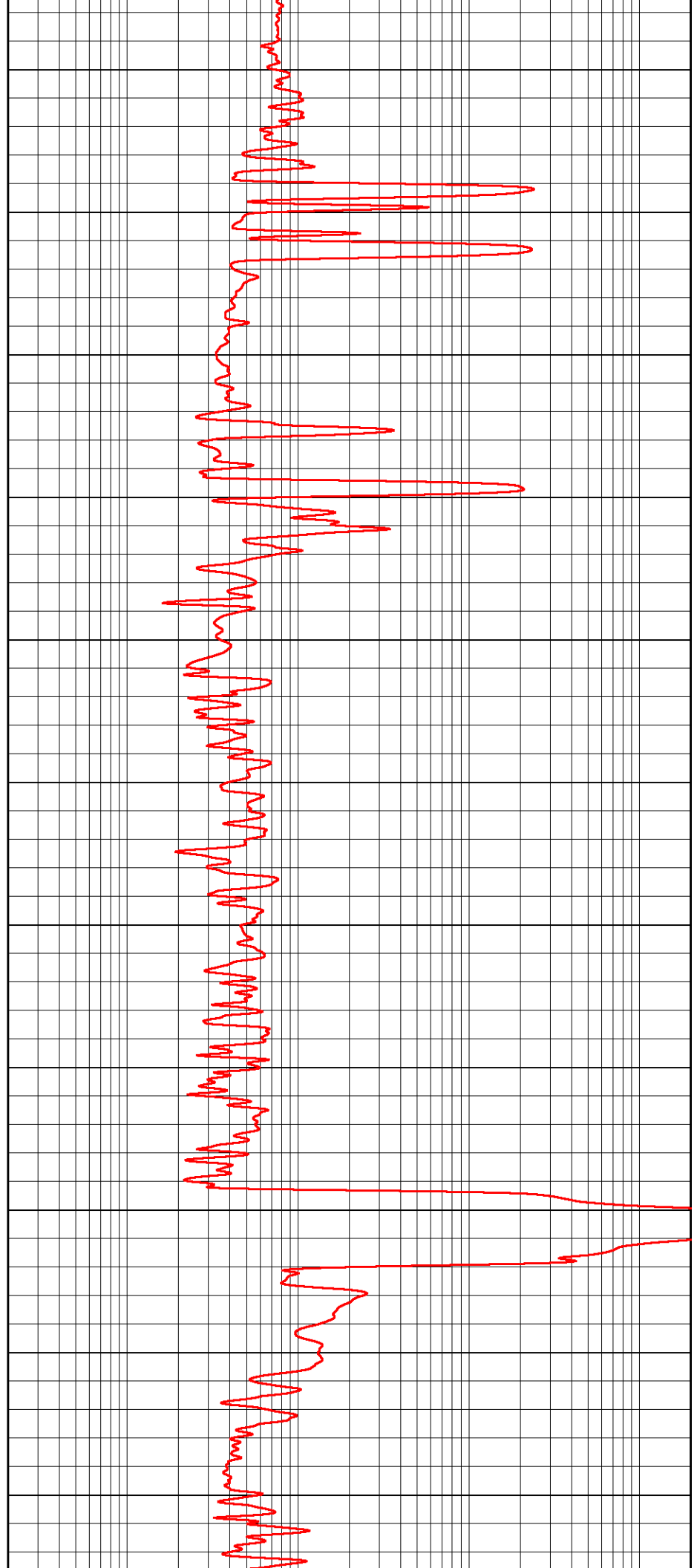
2450

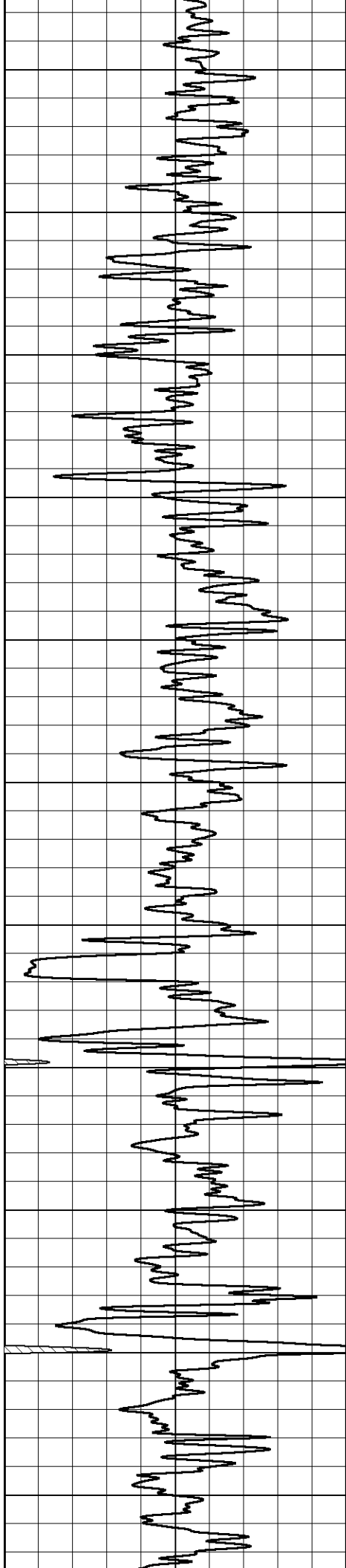
2500

2550

2600

2650





2700

2750

2800

2850

2900

2950

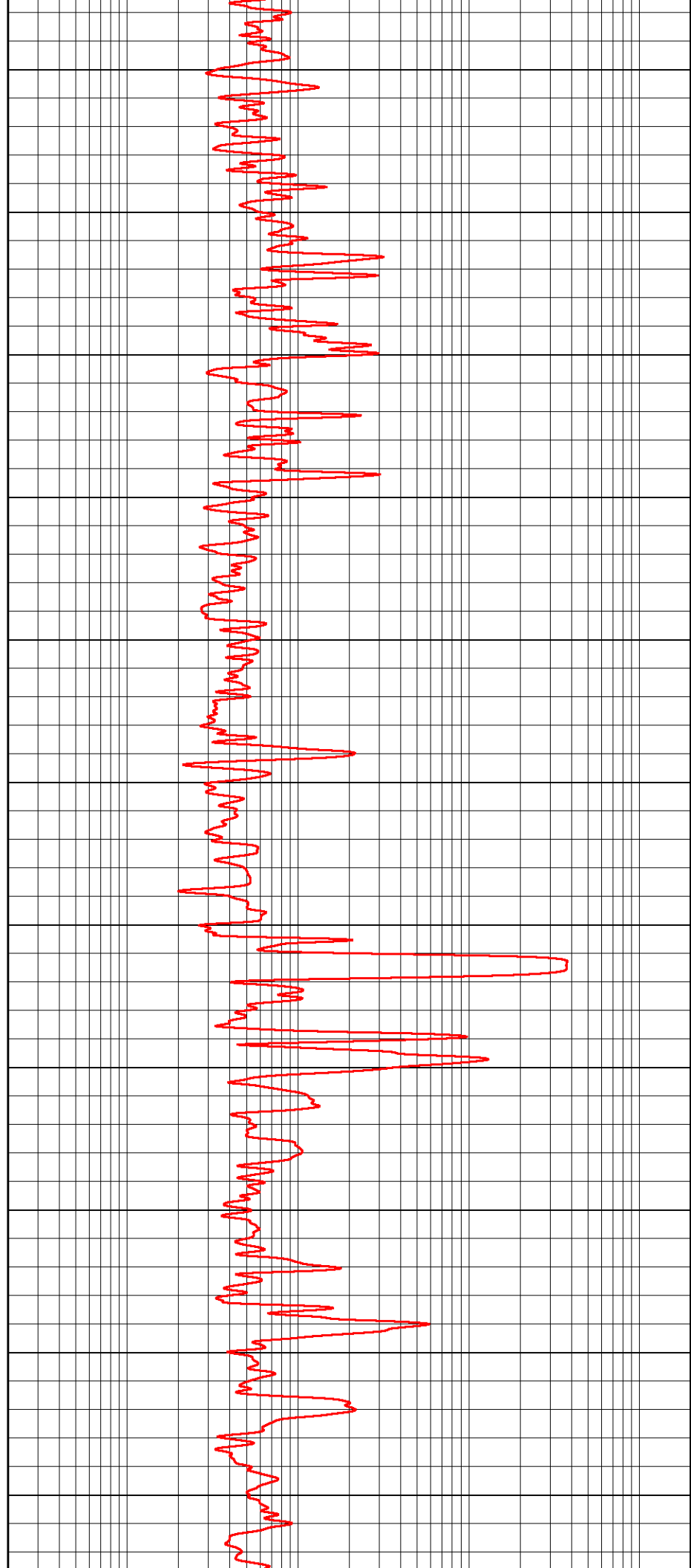
3000

3050

3100

3150

3200



2700

2750

2800

2850

2900

2950

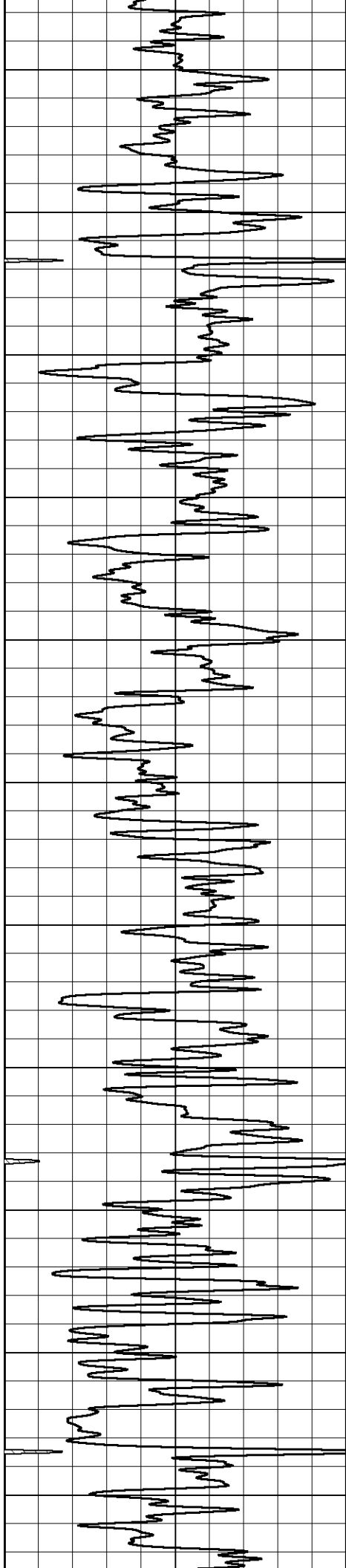
3000

3050

3100

3150

3200



3250

3300

3350

3400

3450

3500

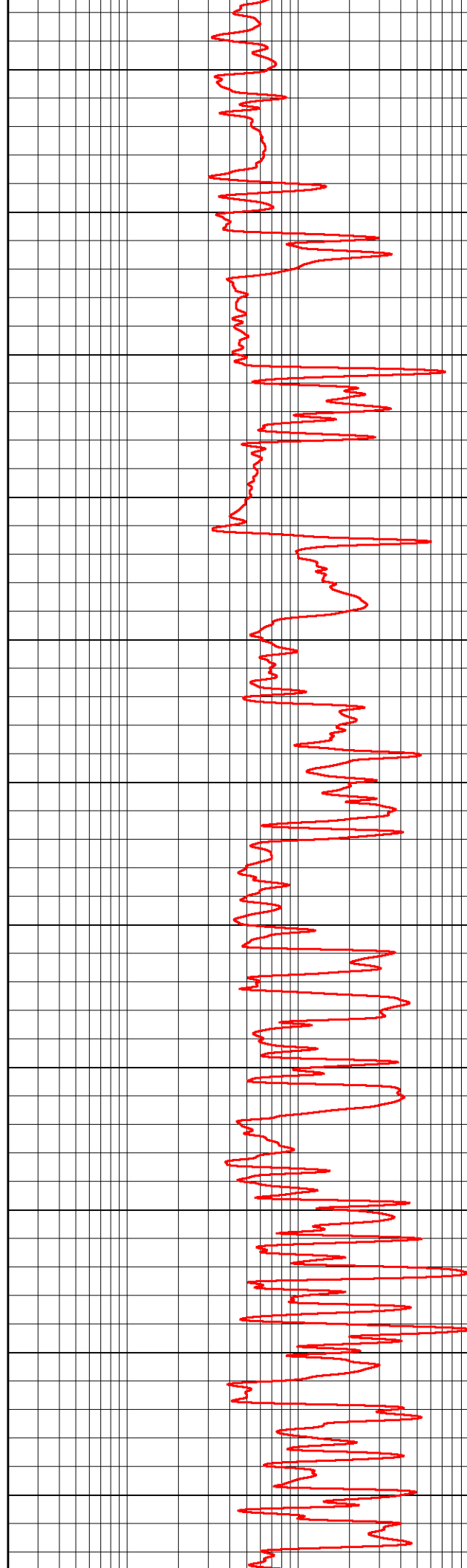
3550

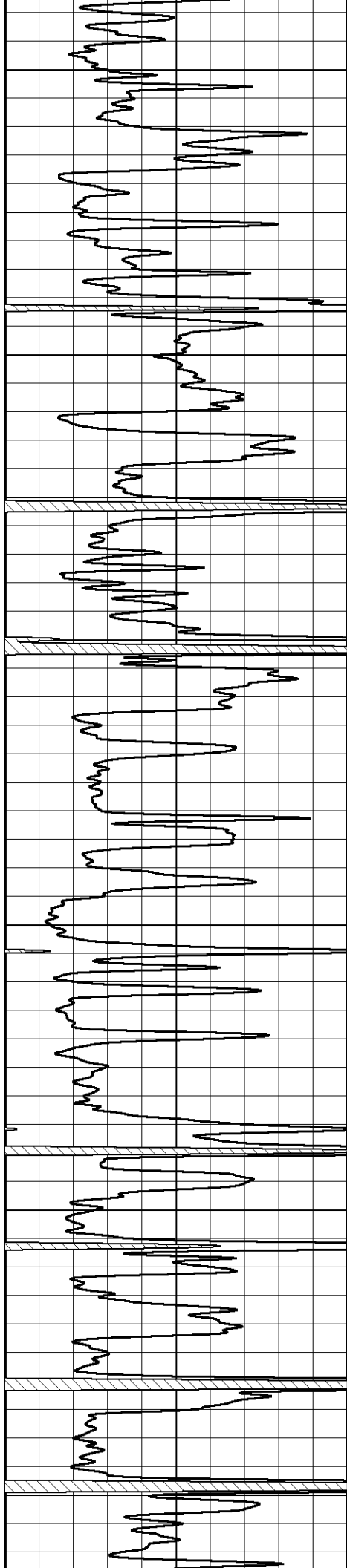
3600

3650

3700

3750





3800

3850

3900

3950

4000

4050

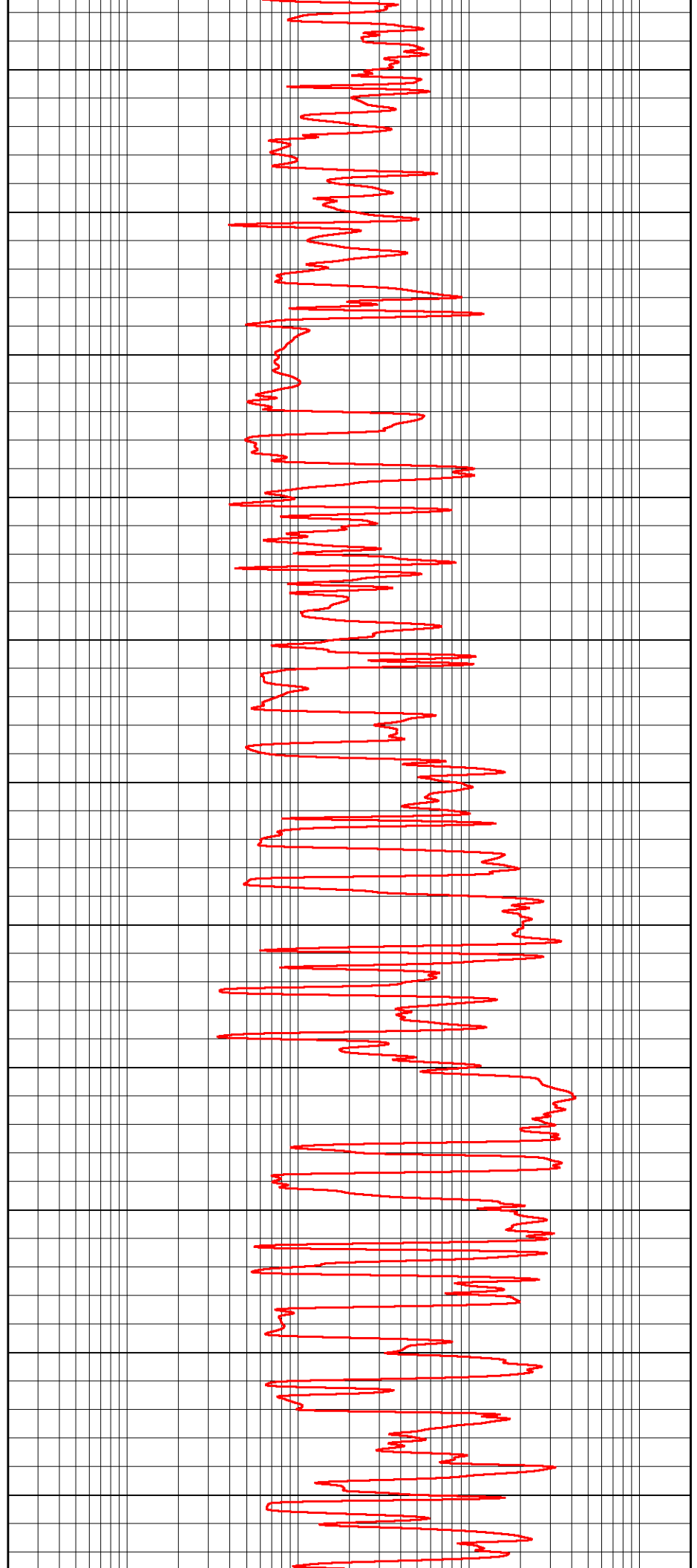
4100

4150

4200

4250

4300



3800

3850

3900

3950

4000

4050

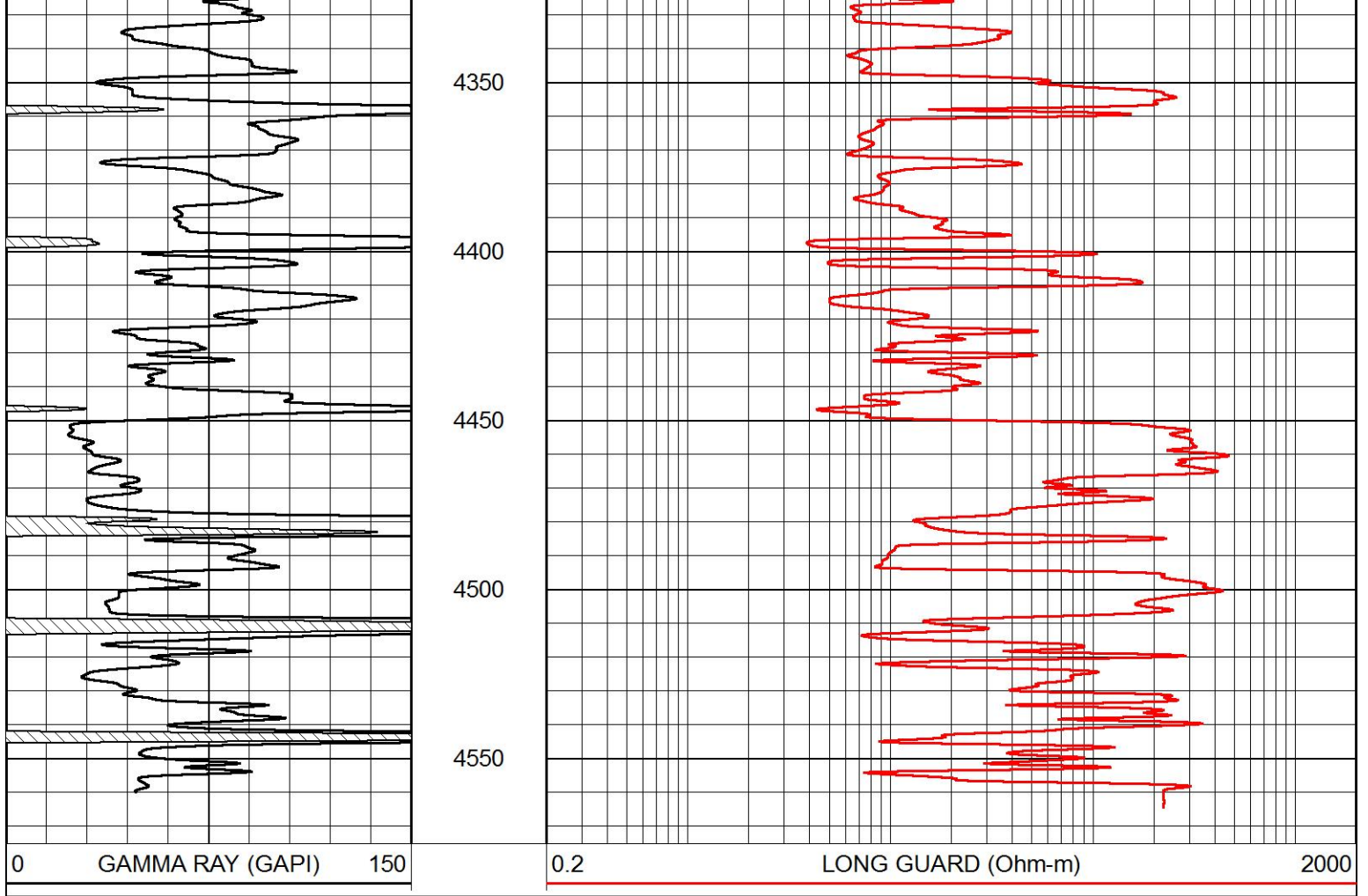
4100

4150

4200

4250

4300

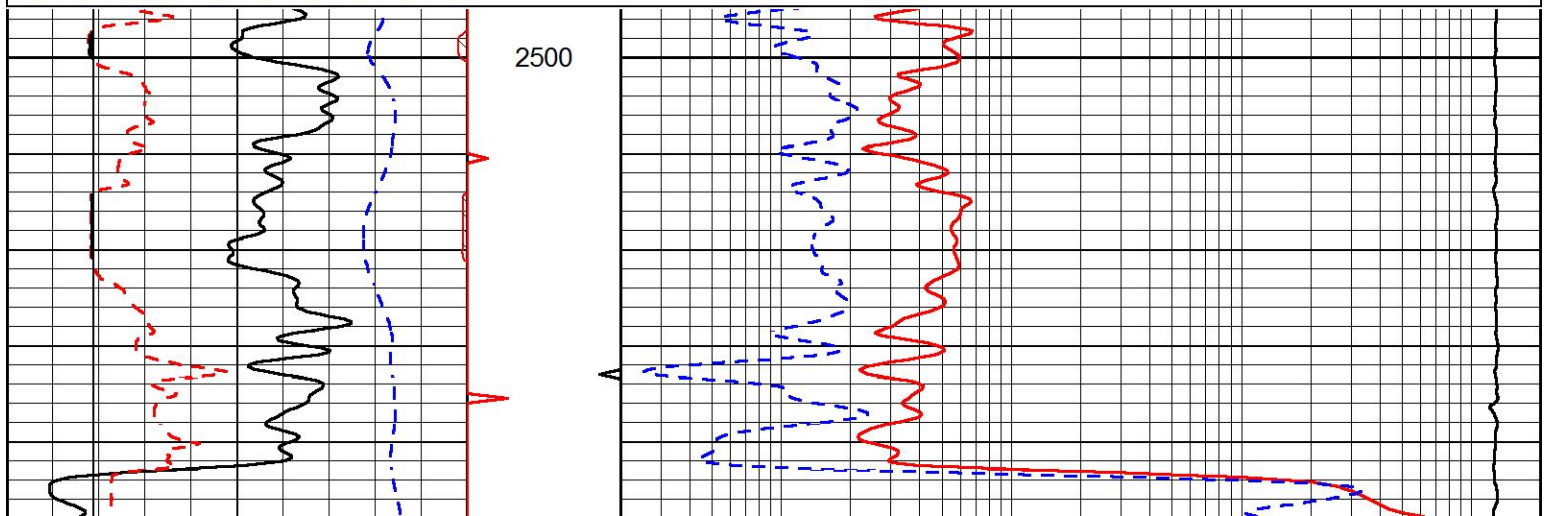


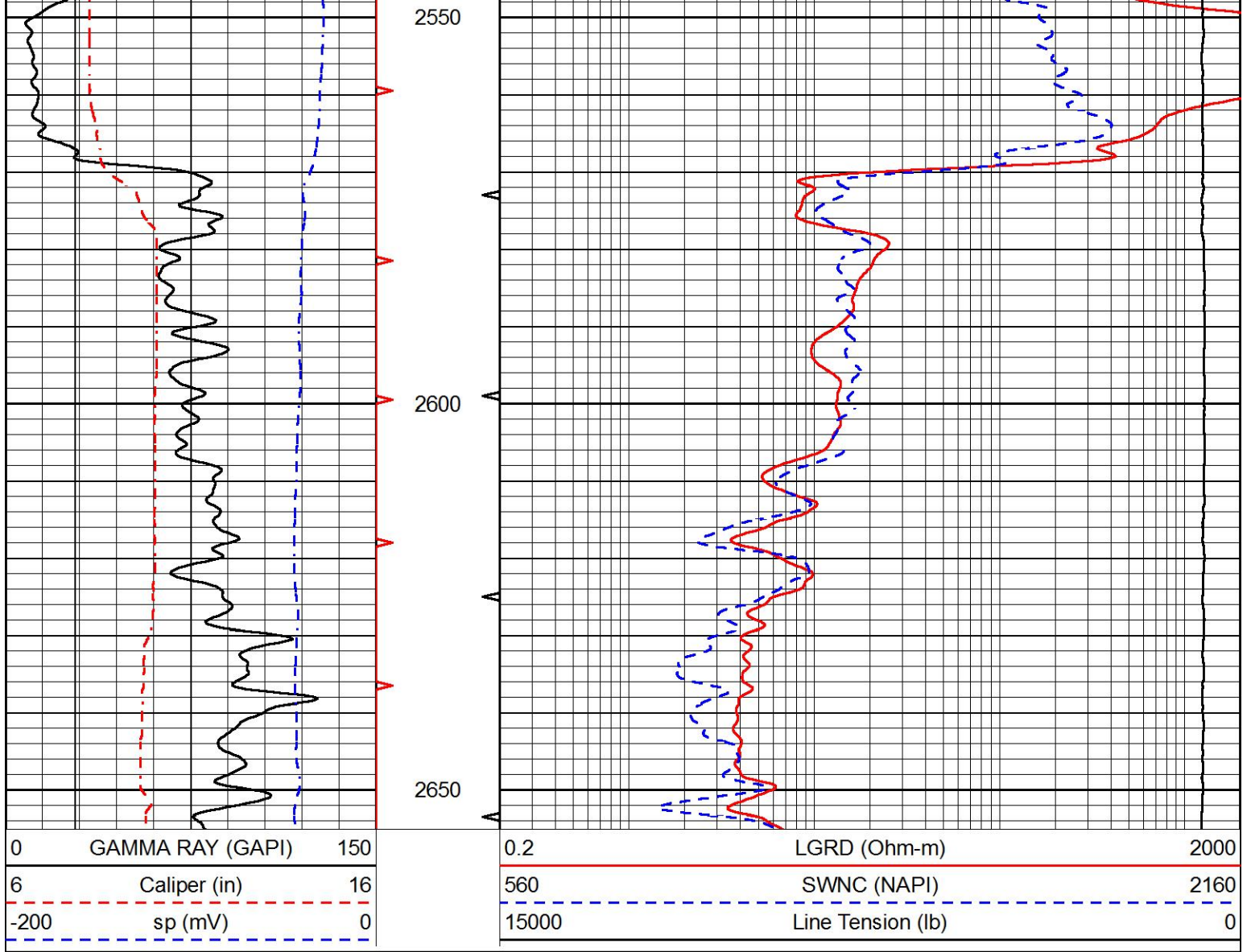
ANHYDRITE

Database File blake_schmitt 3.db
 Dataset Pathname Rag/pass3.7
 Presentation Format rag
 Dataset Creation Sat Sep 05 14:03:30 2020
 Charted by Depth in Feet scaled 1:240

0	GAMMA RAY (GAPI)	150
6	Caliper (in)	16
-200	sp (mV)	0

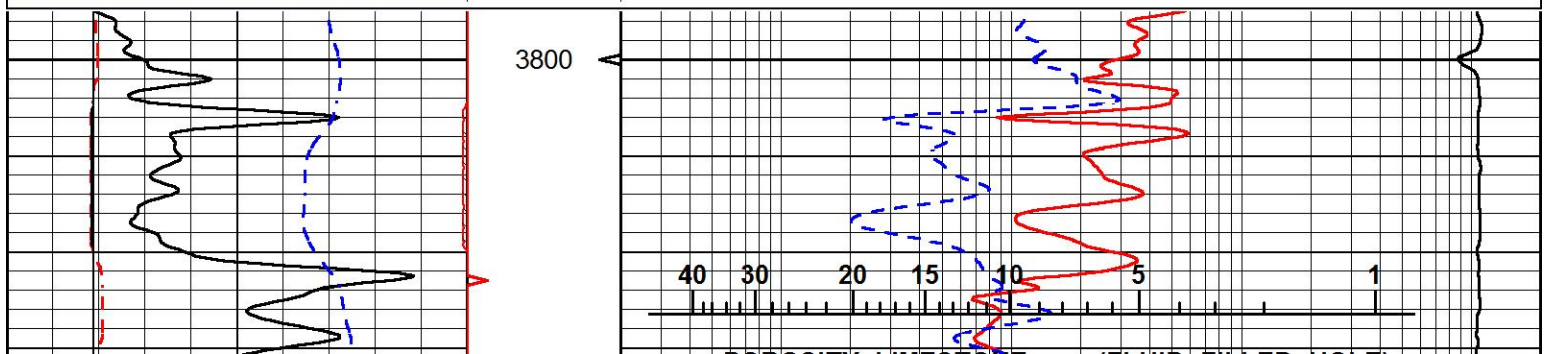
0.2	LGRD (Ohm-m)	2000
560	SWNC (NAPI)	2160
15000	Line Tension (lb)	0



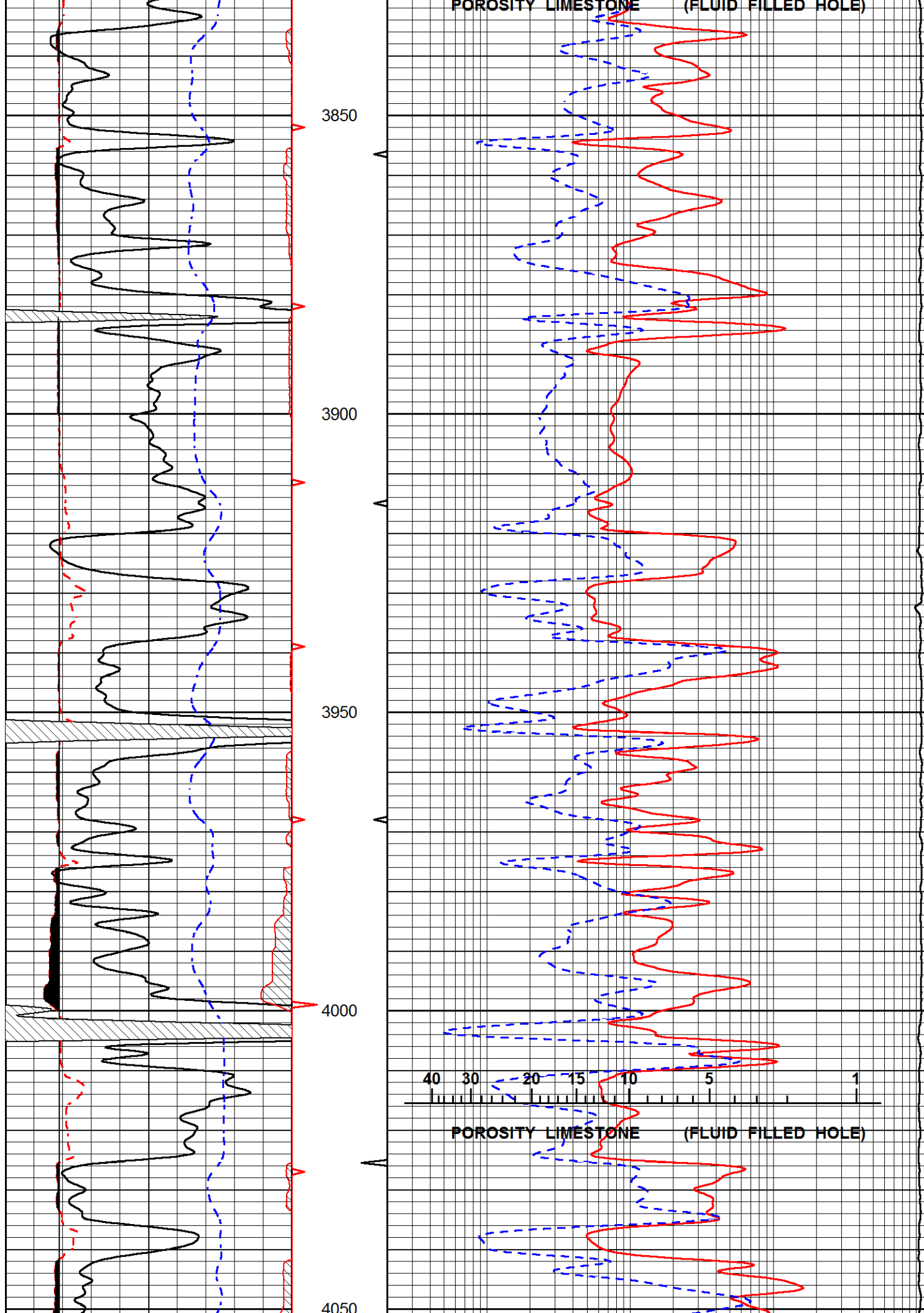


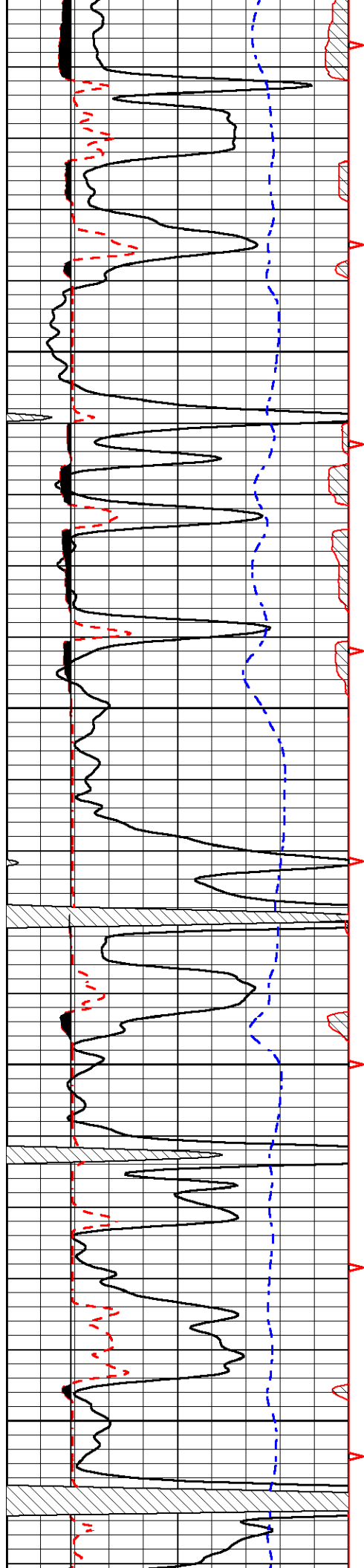
MAIN PASS

Database File blake_schmitt 3.db
 Dataset Pathname Rag/pass4.1
 Presentation Format rag
 Dataset Creation Sat Sep 05 14:19:38 2020
 Charted by Depth in Feet scaled 1:240

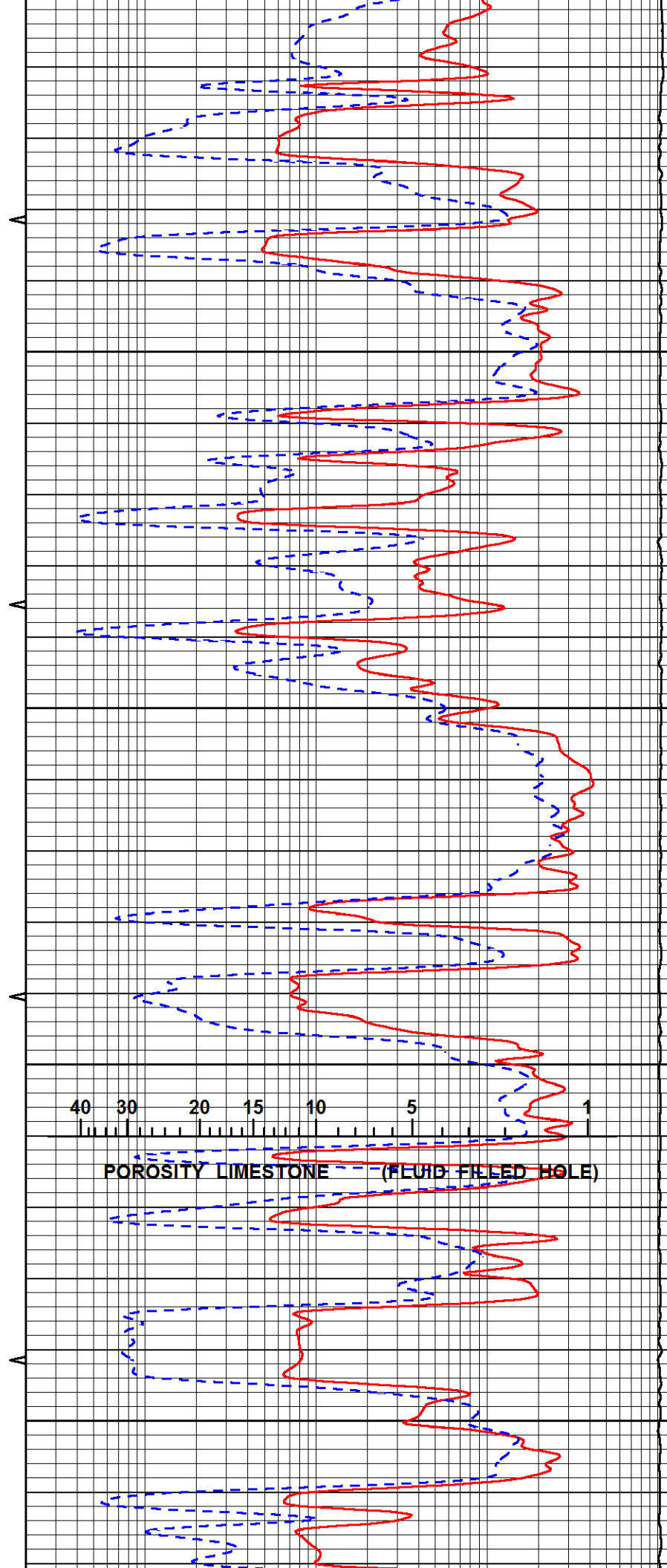


POROSITY LIMESTONE (FLUID FILLED HOLE)

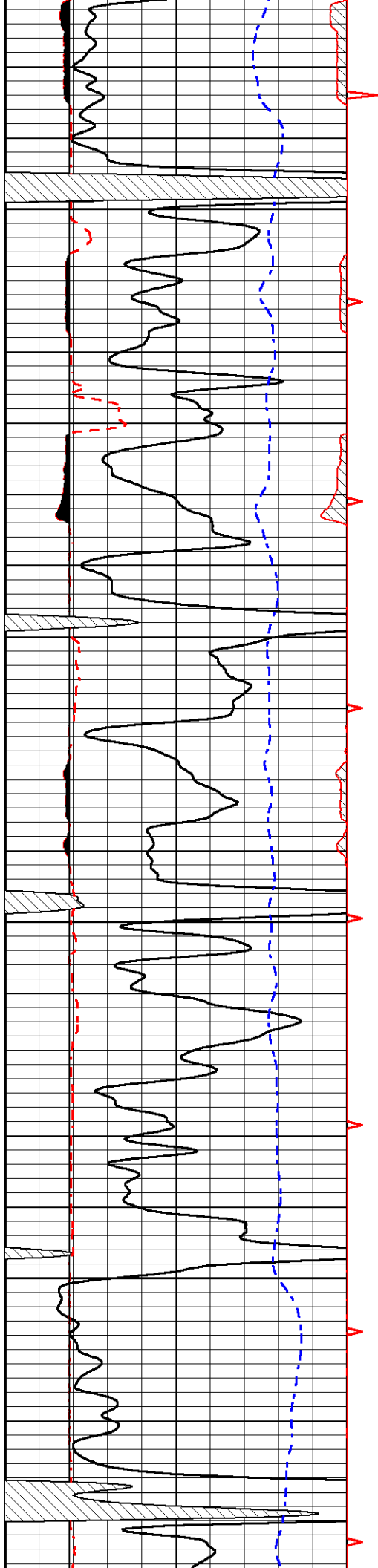




4100
4150
4200
4250



40 30 20 15 10 5 1
POROSITY LIMESTONE (FLUID FILLED HOLE)



4300

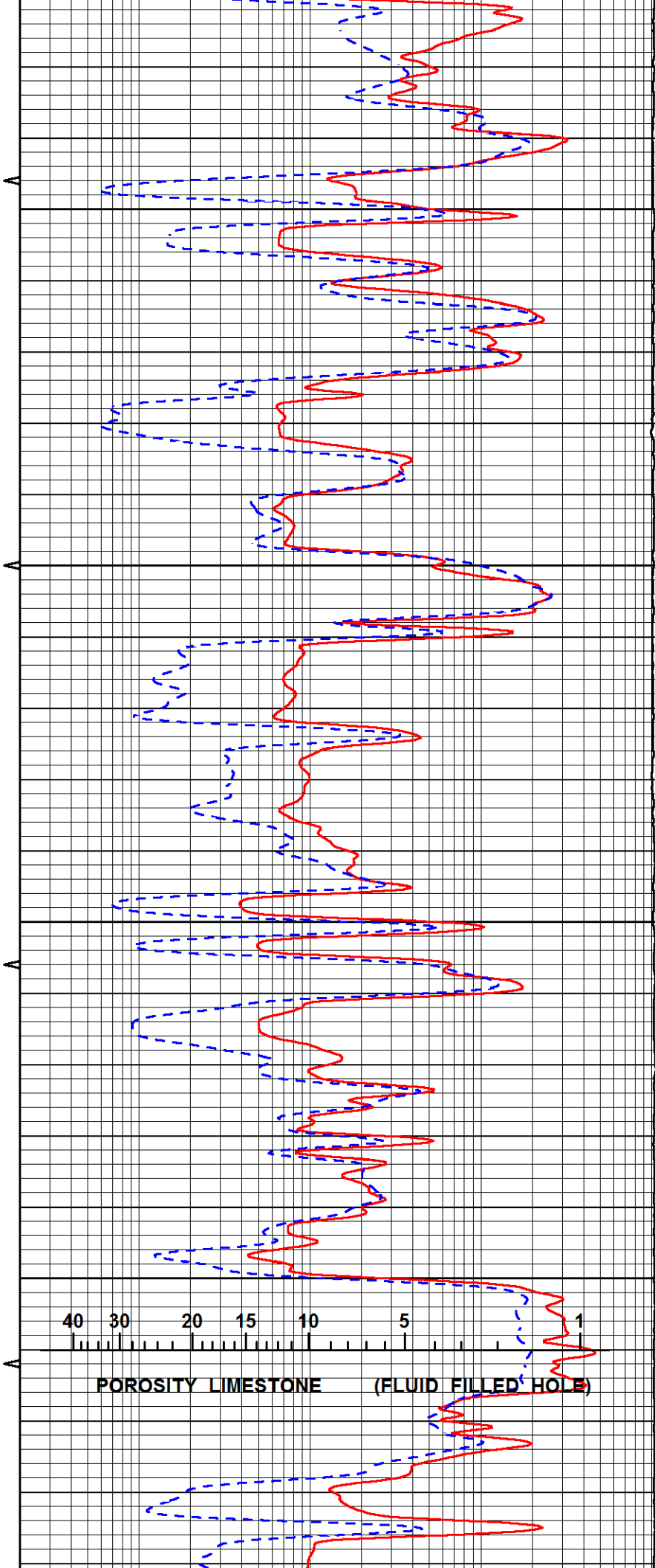
4350

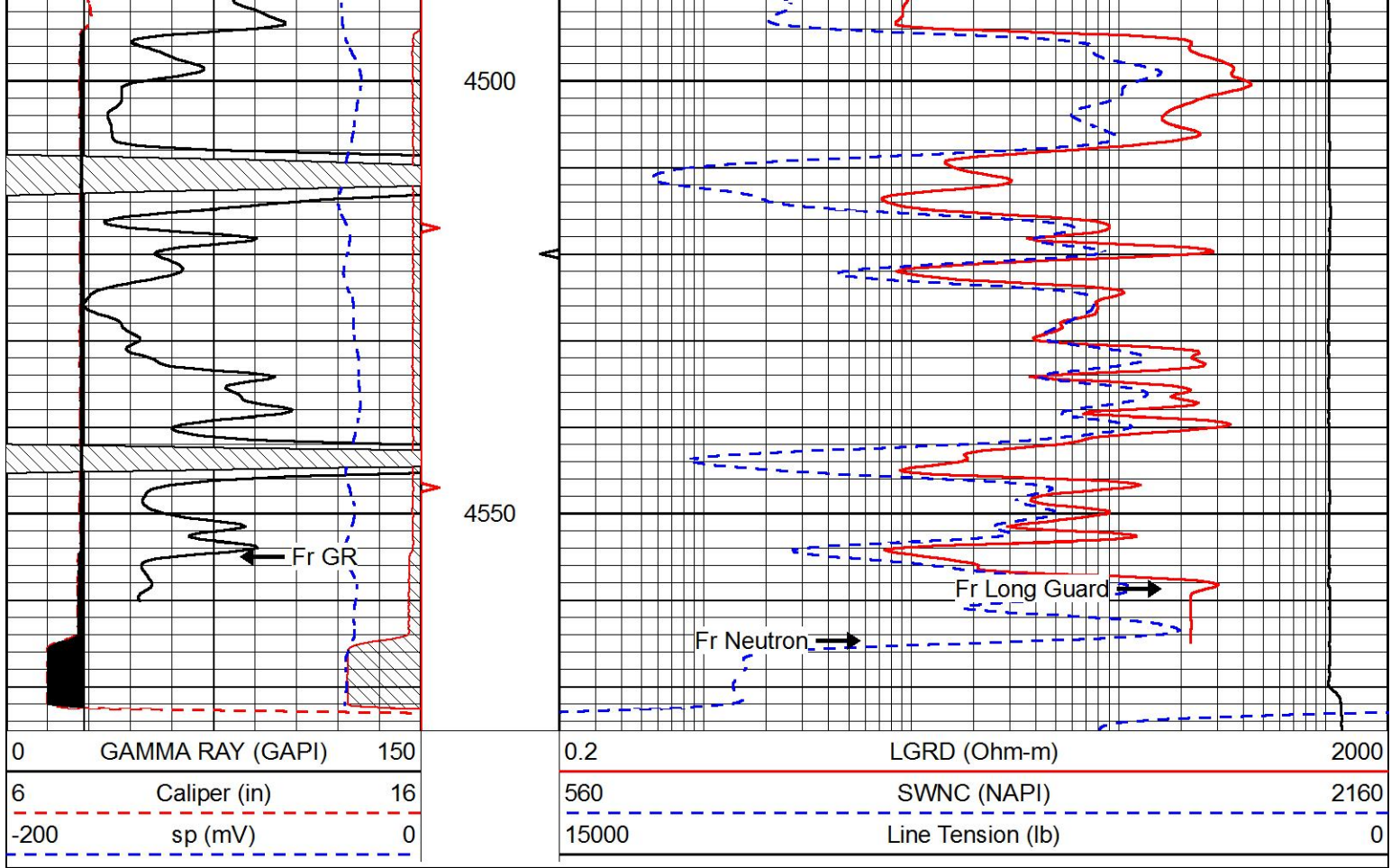
4400

4450

40 30 20 15 10 5 1

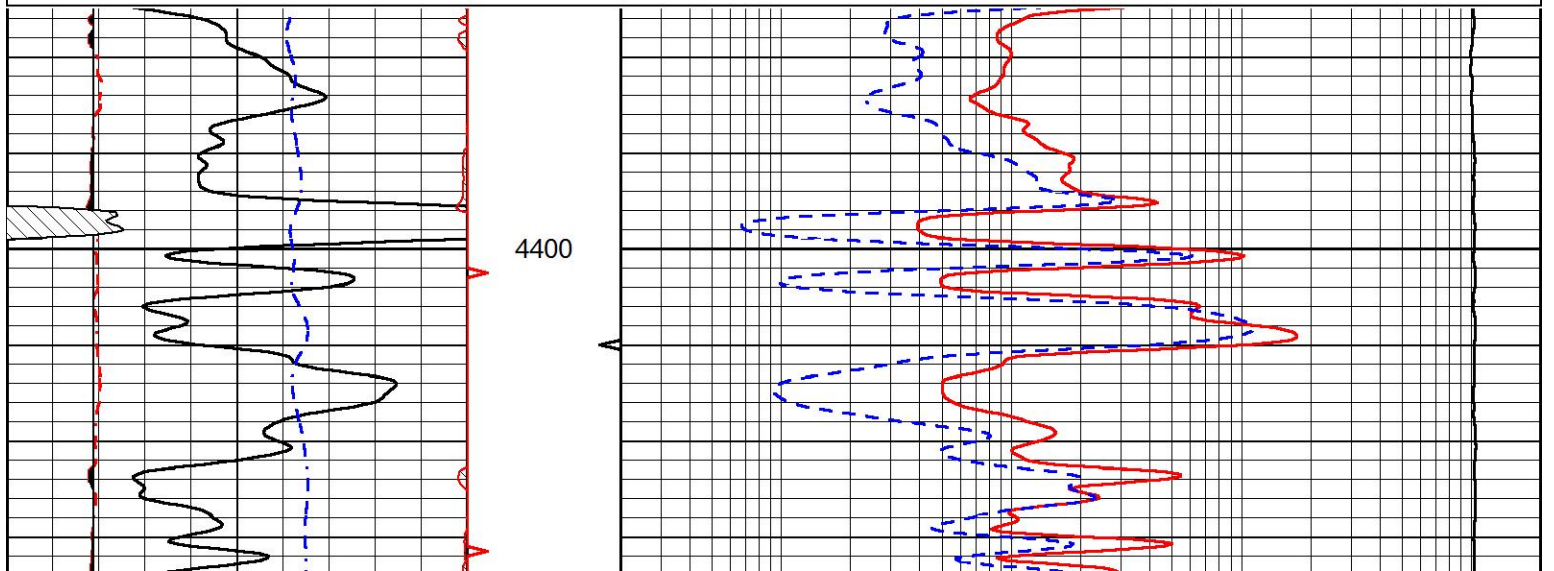
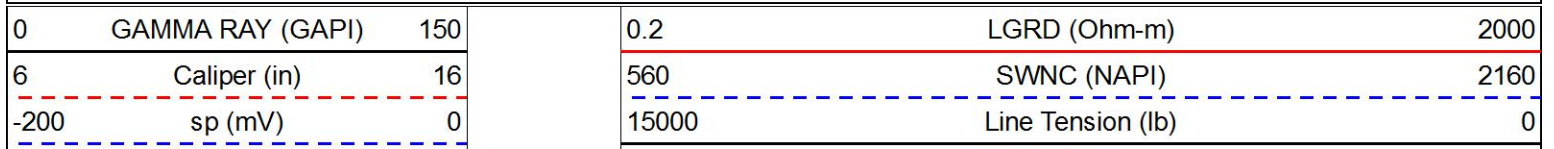
POROSITY LIMESTONE (FLUID FILLED HOLE)

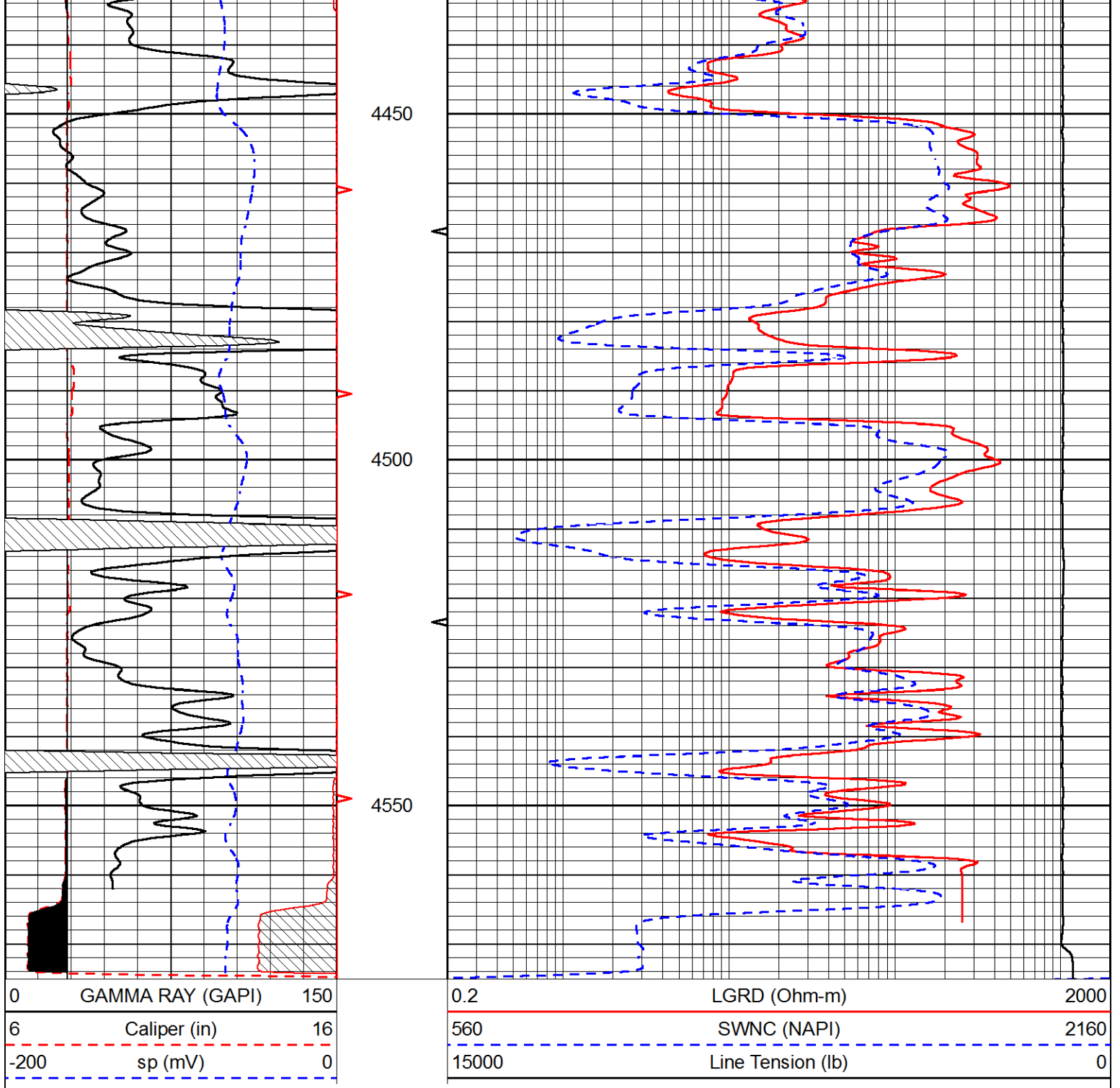




REPEAT SECTION

Database File blake_schmitt 3.db
 Dataset Pathname Rag/pass2.1
 Presentation Format rag
 Dataset Creation Sat Sep 05 14:11:30 2020
 Charted by Depth in Feet scaled 1:240





Calibration Report

Database File blake_schmitt 3.db
 Dataset Pathname Rag/pass3.7
 Dataset Creation Sat Sep 05 14:03:30 2020

Sidewall Neutron Calibration Report

Serial Number: SP162-87
 Tool Model: M&W-SP

SWN Calibration Mon Aug 08 12:41:49 2016

Readings	Target	Normalization
2566.42 cps	1085.00 cps	0.5150

Caliper Calibration Mon Aug 08 12:41:49 2016

Readings	Reference	Gain	Offset
0.86	4.00	-18.31	18.40
0.31	14.00		

Gamma Ray Calibration Report

Serial Number:	89	
Tool Model:	M&W	
Calibration Performed:	Fri Aug 24 11:16:10 2018	
Calibrator Value:	1.0	GAPI
Background Reading:	0.0	cps
Calibrator Reading:	1.0	cps
Sensitivity:	0.6000	GAPI/cps