



**COMPENSATED  
DENSITY/NEUTRON  
LOG**

Company VAL ENERGY, INC.

Well WAYNE'S TRUST #1-9

Field WILDCAT

County THOMAS State KANSAS

Location: API #: 15-193-21080-0000

2200' FNL & 1955' FWL

SEC 9 TWP 7S RGE 36W

Permanent Datum GROUND LEVEL Elevation 3373

Log Measured From KELLY BUSHING 5' A.G.L.

Drilling Measured From KELLY BUSHING

Other Services  
DIL  
ML

Elevation

K.B. 3378

D.F. 3376

G.L. 3373

Date	12/16/20
Run Number	ONE
Depth Driller	4820
Depth Logger	4818
Bottom Logged Interval	4798
Top Log Interval	3900
Casing Driller	8 5/8" @ 344
Casing Logger	344
Bit Size	7 7/8"
Type Fluid in Hole	CHEMICAL MUD
Density / Viscosity	9.3/55
pH / Fluid Loss	10.5/7.2
Source of Sample	FLOWLINE
Rm @ Meas. Temp	.75 @ 60F
Rmf @ Meas. Temp	.56 @ 60F
Rmc @ Meas. Temp	.90 @ 60F
Source of Rmf / Rmc	MEASURED
Rm @ BHT	.36 @ 123F
Time Circulation Stopped	2 HOURS
Time Logger on Bottom	////
Maximum Recorded Temperature	123F
Equipment Number	1523
Location	HAYS, KANSAS
Recorded By	GUS PFANENSTIEL
Witnessed By	TIM PRIEST

<<< Fold Here >>>

All interpretations are opinions based on inferences from electrical or other measurements and we cannot and do not guarantee the accuracy or correctness of any interpretation, and we shall not, except in the case of gross or willful negligence on our part, be liable or responsible for any loss, costs, damages, or expenses incurred or sustained by anyone resulting from any interpretation made by any of our officers, agents or employees. These interpretations are also subject to our general terms and conditions set out in our current Price Schedule.

Comments

THANK YOU FOR USING ELI WIRELINE, HAYS, KS. (785) 628-6395

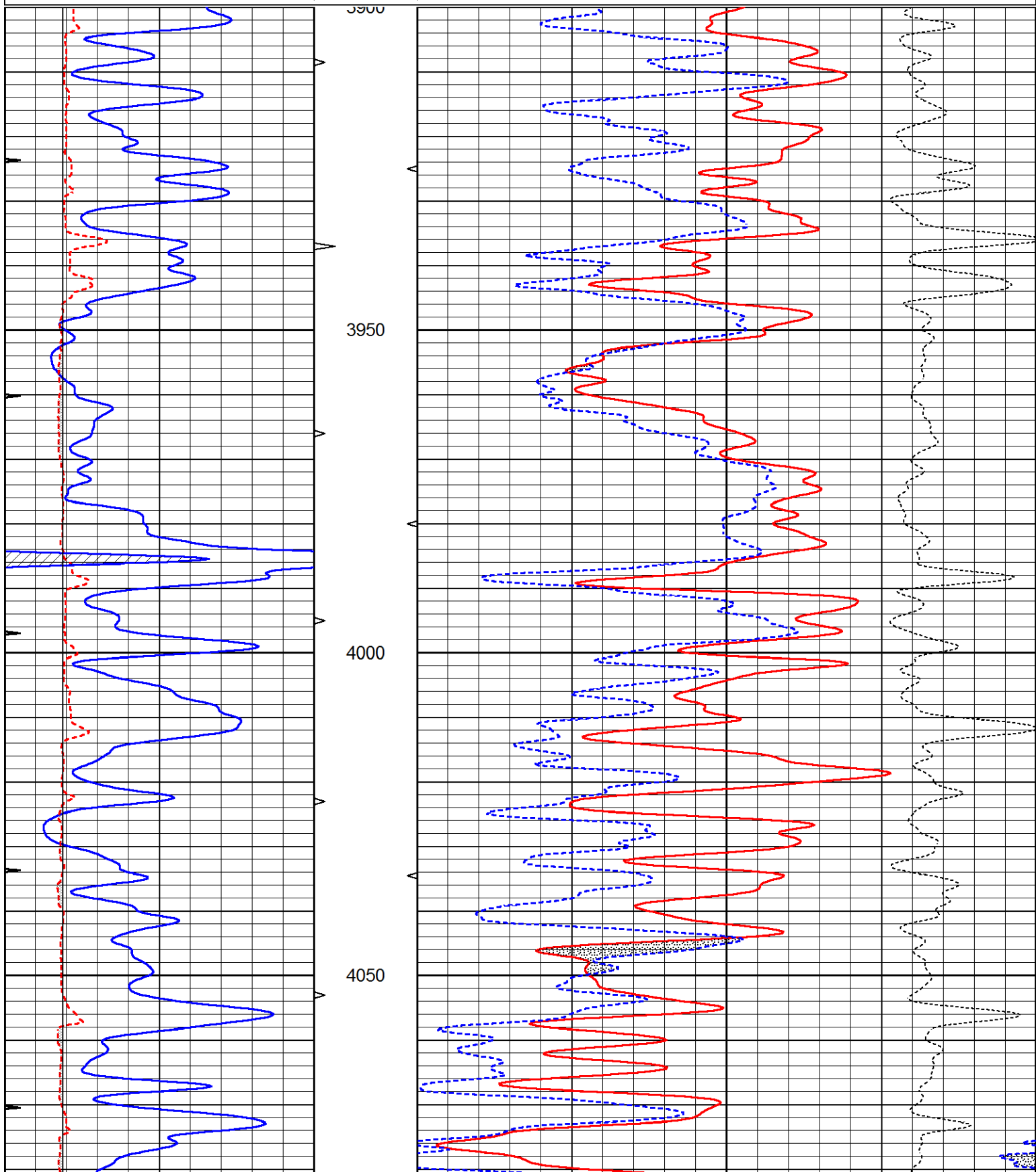
DIRECTIONS: BREWSTER 5 NORTH, 1 EAST, 3/4 NORTH,  
EAST INTO.

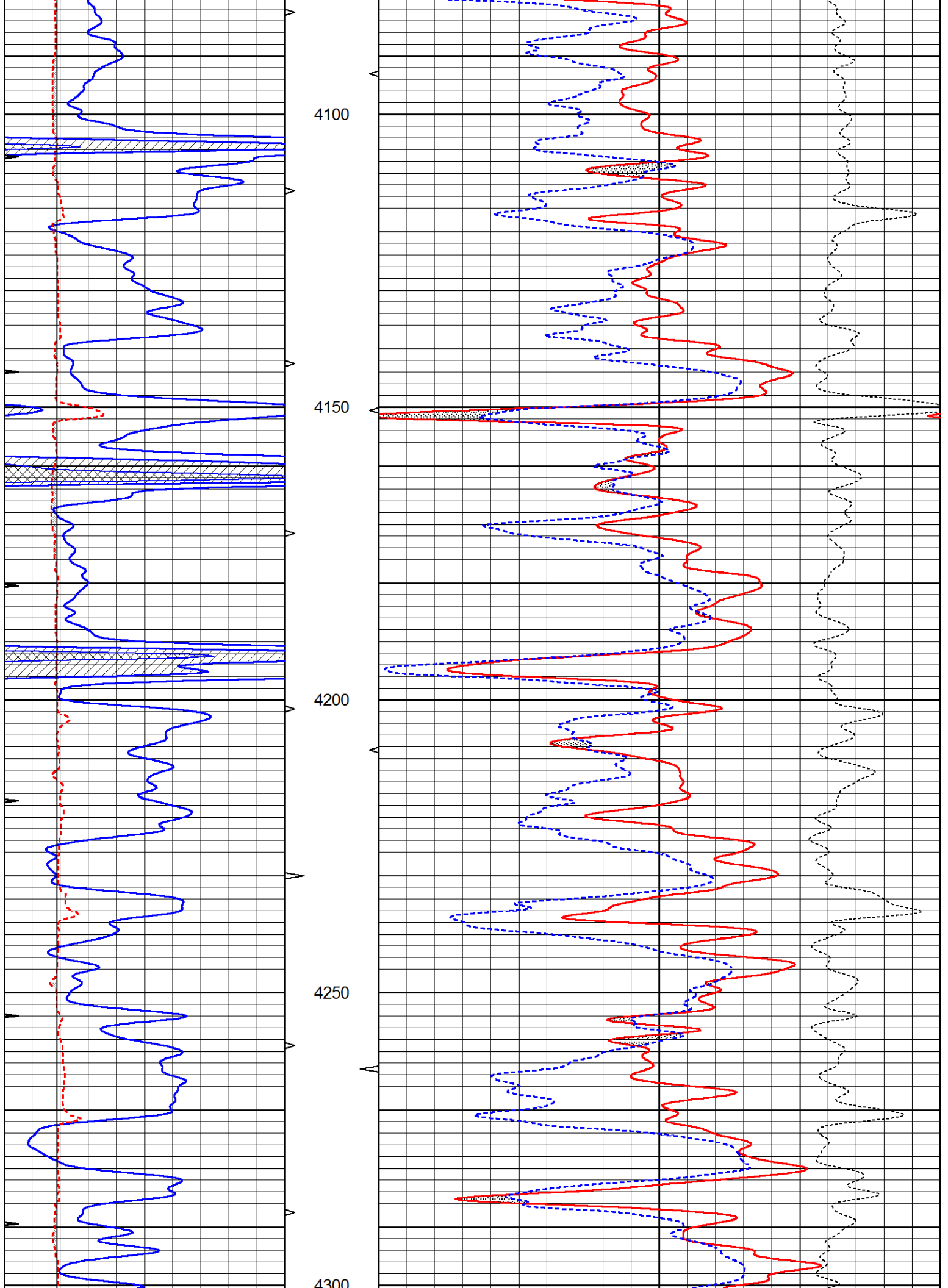


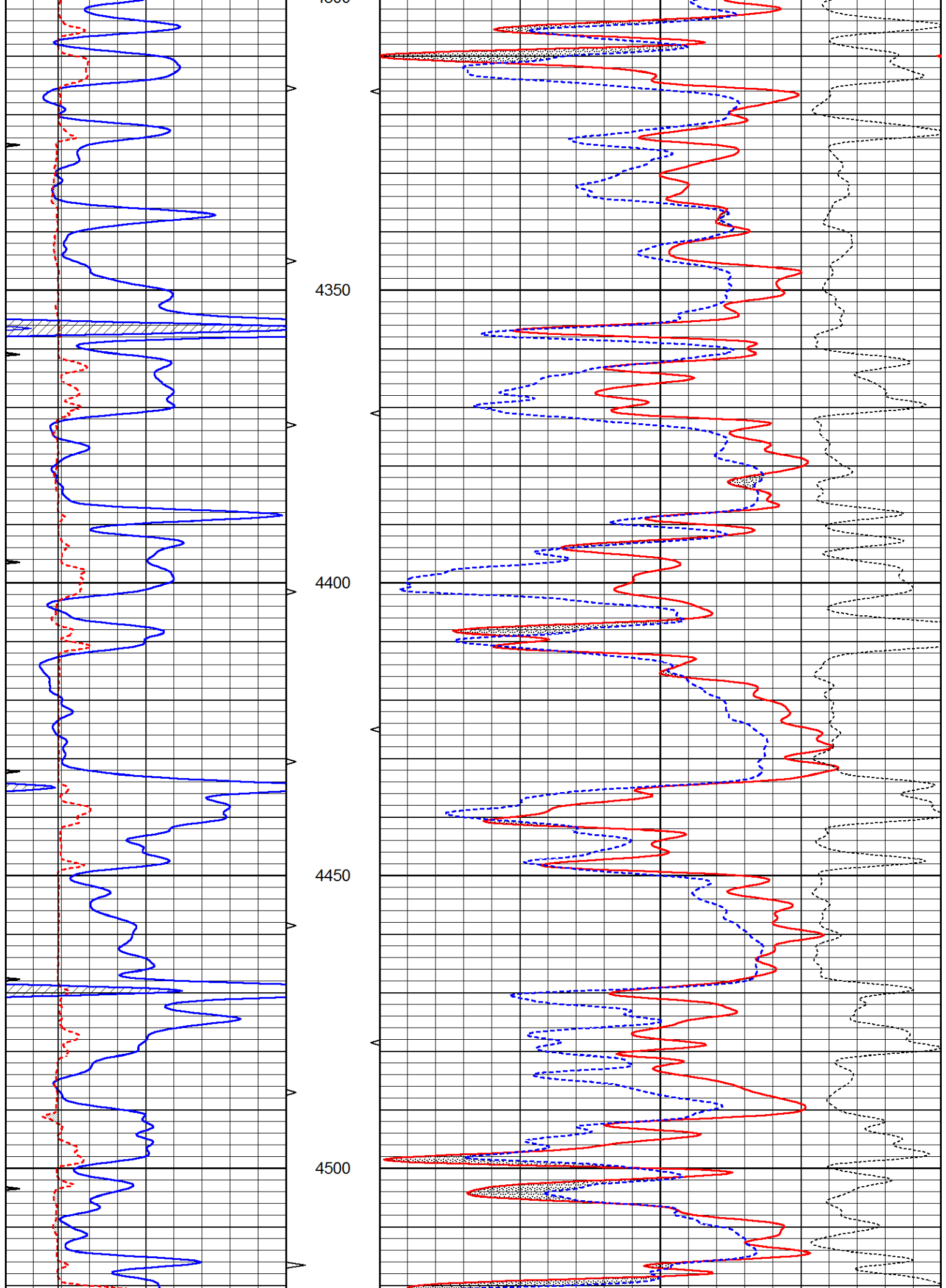
**MAIN PASS**

Database File 5037ddn.db  
 Dataset Pathname pass3POR.1  
 Presentation Format den\_neu  
 Dataset Creation Wed Dec 16 14:16:39 2020  
 Charted by Depth in Feet scaled 1:240

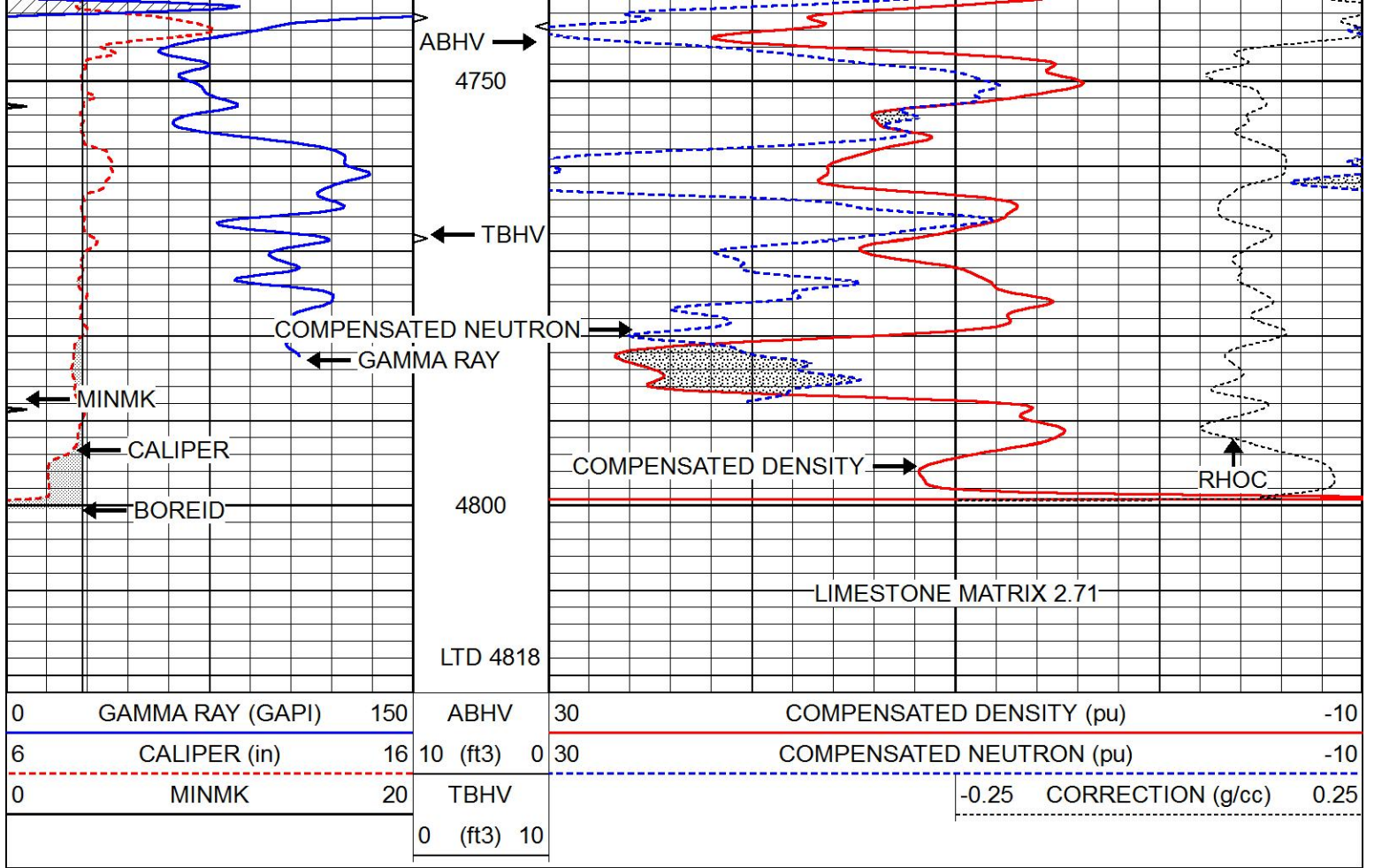
0	GAMMA RAY (GAPI)	150	ABHV	30	COMPENSATED DENSITY (pu)	-10
6	CALIPER (in)	16	10 (ft3)	0	COMPENSATED NEUTRON (pu)	-10
0	MINMK	20	TBHV		-0.25 CORRECTION (g/cc)	0.25
			0 (ft3)	10		







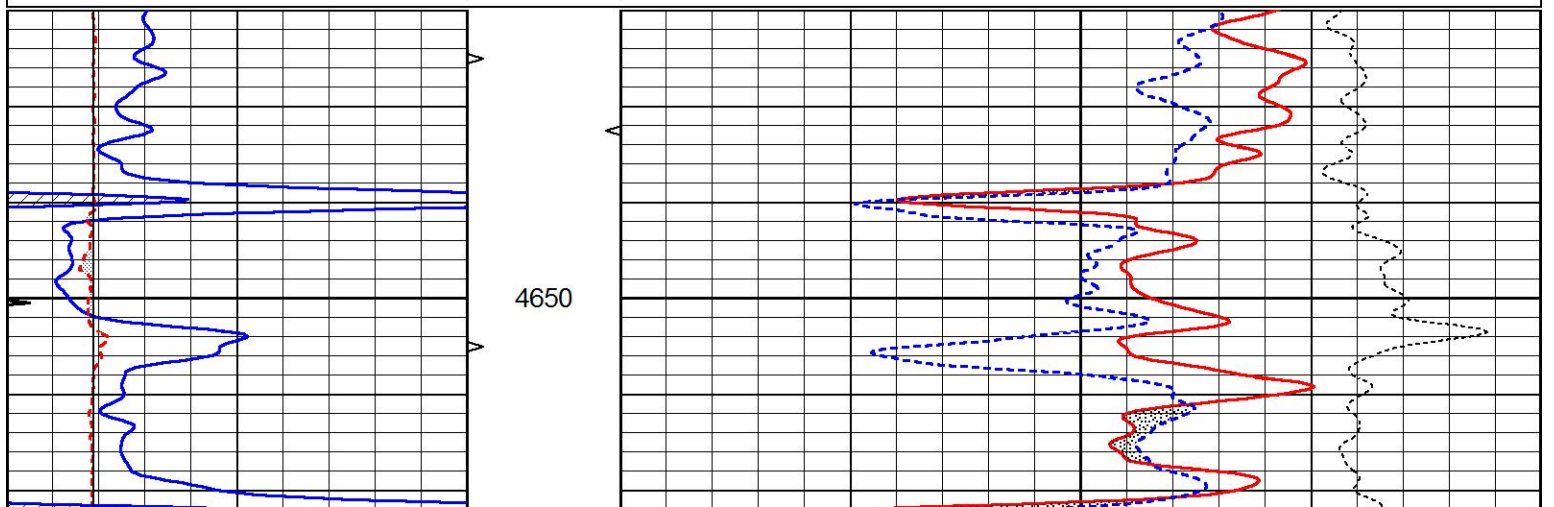


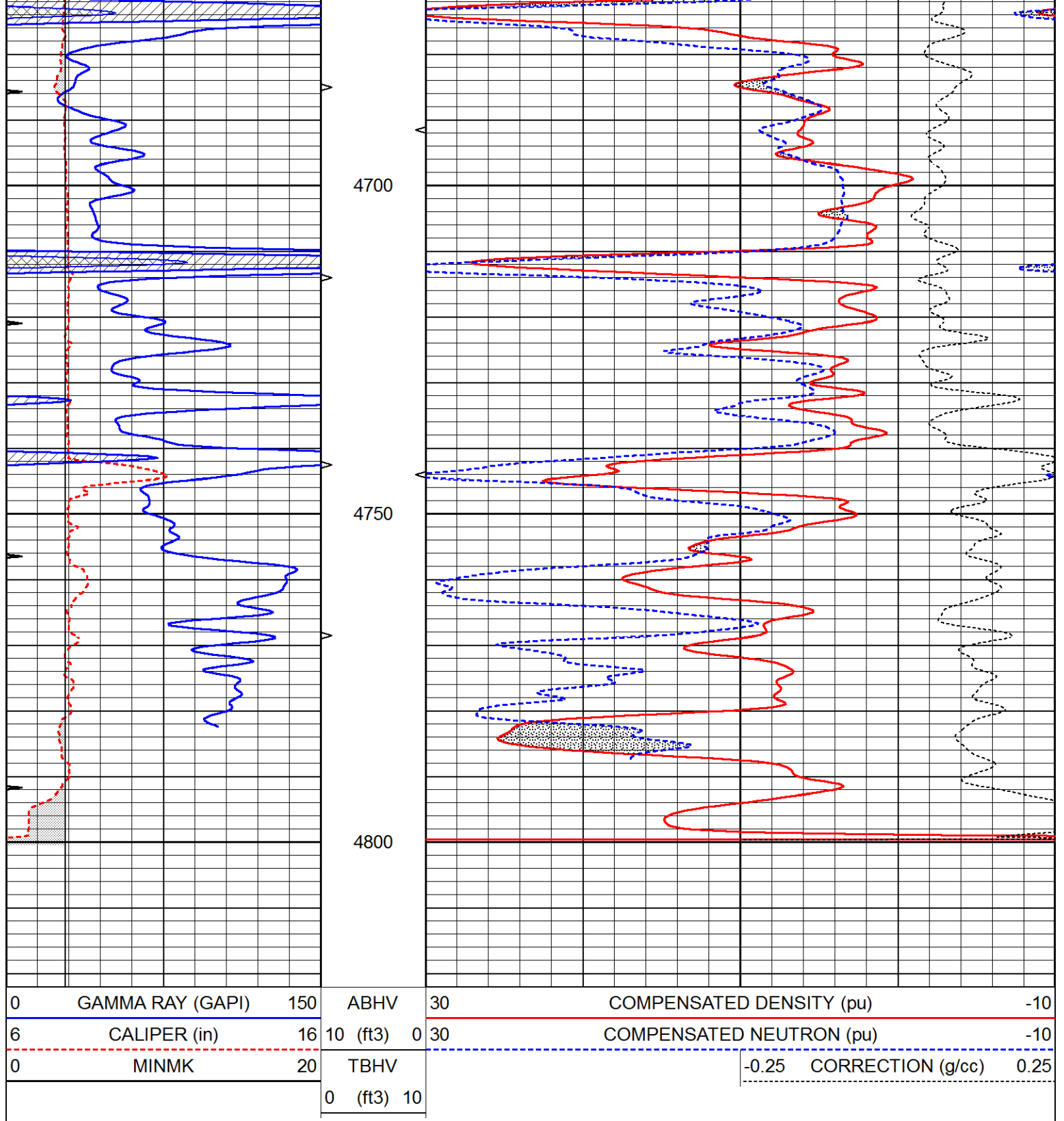


# REPEAT SECTION

Database File 5037ddn.db  
 Dataset Pathname pass2.1  
 Presentation Format den\_neu  
 Dataset Creation Wed Dec 16 14:00:15 2020  
 Charted by Depth in Feet scaled 1:240

0	GAMMA RAY (GAPI)	150	ABHV	30	COMPENSATED DENSITY (pu)	-10
6	CALIPER (in)	16	10 (ft3)	0 30	COMPENSATED NEUTRON (pu)	-10
0	MINMK	20	TBHV		-0.25 CORRECTION (g/cc)	0.25
			0 (ft3)	10		





### Calibration Report

Database File 5037ddn.db  
 Dataset Pathname pass2.1  
 Dataset Creation Wed Dec 16 14:00:15 2020

### Dual Induction Calibration Report

Serial-Model: PROBE8-DILG  
 Surface Cal Performed: Mon Sep 10 14:28:35 2018  
 Downhole Cal Performed: Mon Sep 10 14:28:38 2018  
 After Survey Verification Performed: Mon Sep 10 14:28:40 2018

Surface Calibration

Loop:	Readings			References			Results	
	Air	Loop		Air	Loop		m	b
Deep	0.015	0.648	V	0.000	400.000	mmho/m	620.000	0.000
Medium	0.029	0.796	V	0.000	464.000	mmho/m	590.000	-12.000
Internal:	Zero	Cal		Zero	Cal		m	b
Deep	0.017	0.657	V	0.000	400.000	mmho/m	625.153	-10.619
Medium	0.016	0.757	V	0.000	464.000	mmho/m	625.992	-9.739

Downhole Calibration								
	Readings			References			Results	
	Zero	Cal		Zero	Cal		m'	b'
Deep	0.000	0.000	mmho/m	2.011	405.777	mmho/m	1.000	0.000
Medium	0.000	0.000	mmho/m	7.590	503.393	mmho/m	1.000	0.000
LL3		7.500	V		1500.000	Ohm-m		
		0.000	V		20.000	Ohm-m		
		-7.200	V		3800.000	mmho-m		

After Survey Verification								
	Readings			Targets			Results	
	Zero	Cal		Zero	Cal		m'	b'
Deep	0.000	0.000	mmho/m	0.000	0.000	mmho/m	0.000	0.000
Medium	0.000	0.000	mmho/m	0.000	0.000	mmho/m	0.000	0.000
LL3		1.000	Ohm-m		1.000	Ohm-m		
		0.000	Ohm-m		0.000	Ohm-m		
		1.000	mmho-m		1.000	mmho-m		

Litho Density Calibration Report  
Serial: 001N      Model: PRB

Master Calibration					Performed Thu Mar 19 11:30:16 2020			
	Background	Magnesium	Aluminum	Aluminum+Fe				
Window 1	1572.2	7510.8	2837.3	2643.1				cps
Window 2	1446.2	6523.9	2552.8	2409.9				cps
Window 3	1060.9	3611.4	1731.5	1684.8				cps
Window 4	145.5	363.4	363.2	368.1				cps
Long Space	0.0	5077.7	1106.6	963.7				cps
Short Space	3.1	1709.3	1103.4	916.9				cps
Rho		1.7100	2.5900	0.0000				g/cc
Pe		2.0000	2.7500	5.7900				
Rib Angle	: 44.0	Rib Slope	: 0.965	Density/Spine Ratio				: 0.555
Spine Angle	: 74.0	Spine Slope	: 3.481	Spine Intercept				: -17.4

Before Survey Verification					Performed Wed Dec 31 18:00:00 1969			
	Background	Magnesium	Aluminum	Aluminum+Fe				
Window 1	0.0	0.0	0.0	0.0				cps
Window 2	0.0	0.0	0.0	0.0				cps
Window 3	0.0	0.0	0.0	0.0				cps
Window 4	0.0	0.0	0.0	0.0				cps
Long Space	0.0	0.0	0.0	0.0				cps
Short Space	0.0	0.0	0.0	0.0				cps
Measured Rho		0.0000	0.0000	0.0000				g/cc
Measured Correction		0.0000	0.0000	0.0000				g/cc
Measured Pe			0.0000	0.0000				

Window 1	0.0	0.0	0.0	0.0	cps
Window 2	0.0	0.0	0.0	0.0	cps
Window 3	0.0	0.0	0.0	0.0	cps
Window 4	0.0	0.0	0.0	0.0	cps
Long Space	0.0	0.0	0.0	0.0	cps
Short Space	0.0	0.0	0.0	0.0	cps
Measured Rho		0.0000	0.0000	0.0000	g/cc
Measured Correction		0.0000	0.0000	0.0000	g/cc
Measured Pe			0.0000	0.0000	

## Compensated Neutron Calibration Report

Serial Number: 6I  
Tool Model: G

## CALIBRATION

Detector	Readings	Target	Normalization
Short Space	1.00 cps	1.00 cps	1.0000
Long Space	1.00 cps	1.00 cps	1.0000

## PRE-SURVEY VERIFICATION

	Detector	Readings	Measured	Target
1)	Short Space	cps		
	Long Space	cps	pu	pu
2)	Short Space	cps		
	Long Space	cps	pu	
3)	Short Space	cps		
	Long Space	cps	pu	

## POST-SURVEY VERIFICATION

	Detector	Readings	Measured	Target
1)	Short Space	cps		
	Long Space	cps	pu	pu
2)	Short Space	cps		
	Long Space	cps	pu	pu
3)	Short Space	cps		
	Long Space	cps	pu	pu

## Gamma Ray Calibration Report

Serial Number: GR6  
Tool Model: OPEN  
Performed: Thu Jul 30 20:04:35 2020

Calibrator Value: 150.0 GAPI

Background Reading: 0.0 cps  
Calibrator Reading: 276.0 cps

Sensitivity: 0.7500 GAPI/cps