

MICRO LOG



Company VAL ENERGY, INC.
 Well WAYNE'S TRUST #1-9
 Field WILDCAT
 County THOMAS State KANSAS

Location: 2200' FNL & 1955' FWL
 API #: 15-193-21080-0000
 SEC 9 TWP 7S RGE 36W
 Permanent Datum GROUND LEVEL Elevation 3373
 Log Measured From KELLY BUSHING 5' A.G.L.
 Drilling Measured From KELLY BUSHING
 Other Services CDL/CNL DIL
 Elevation K.B. 3378 D.F. 3376 G.L. 3373

Date	12/16/20
Run Number	TWO
Depth Driller	4820
Depth Logger	4818
Bottom Logged Interval	4817
Top Log Interval	3900
Casing Driller	8 5/8" @ 344
Casing Logger	344
Bit Size	7 7/8"
Type Fluid in Hole	CHEMICAL MUD
Density / Viscosity	9.3/55
pH / Fluid Loss	10.5/7.2
Source of Sample	FLOWLINE
Rm @ Meas. Temp	.75 @ 60F
Rmf @ Meas. Temp	.56 @ 60F
Rmc @ Meas. Temp	.90 @ 60F
Source of Rmf / Rmc	MEASURED
Rm @ BHT	.36 @ 123F
Time Circulation Stopped	2 HOURS
Time Logger on Bottom	////
Maximum Recorded Temperature	123F
Equipment Number	1523
Location	HAYS, KANSAS
Recorded By	GUS PFANENSTIEL
Witnessed By	TIM PRIEST

<<< Fold Here >>>

All interpretations are opinions based on inferences from electrical or other measurements and we cannot and do not guarantee the accuracy or correctness of any interpretation, and we shall not, except in the case of gross or willful negligence on our part, be liable or responsible for any loss, costs, damages, or expenses incurred or sustained by anyone resulting from any interpretation made by any of our officers, agents or employees. These interpretations are also subject to our general terms and conditions set out in our current Price Schedule.

Comments

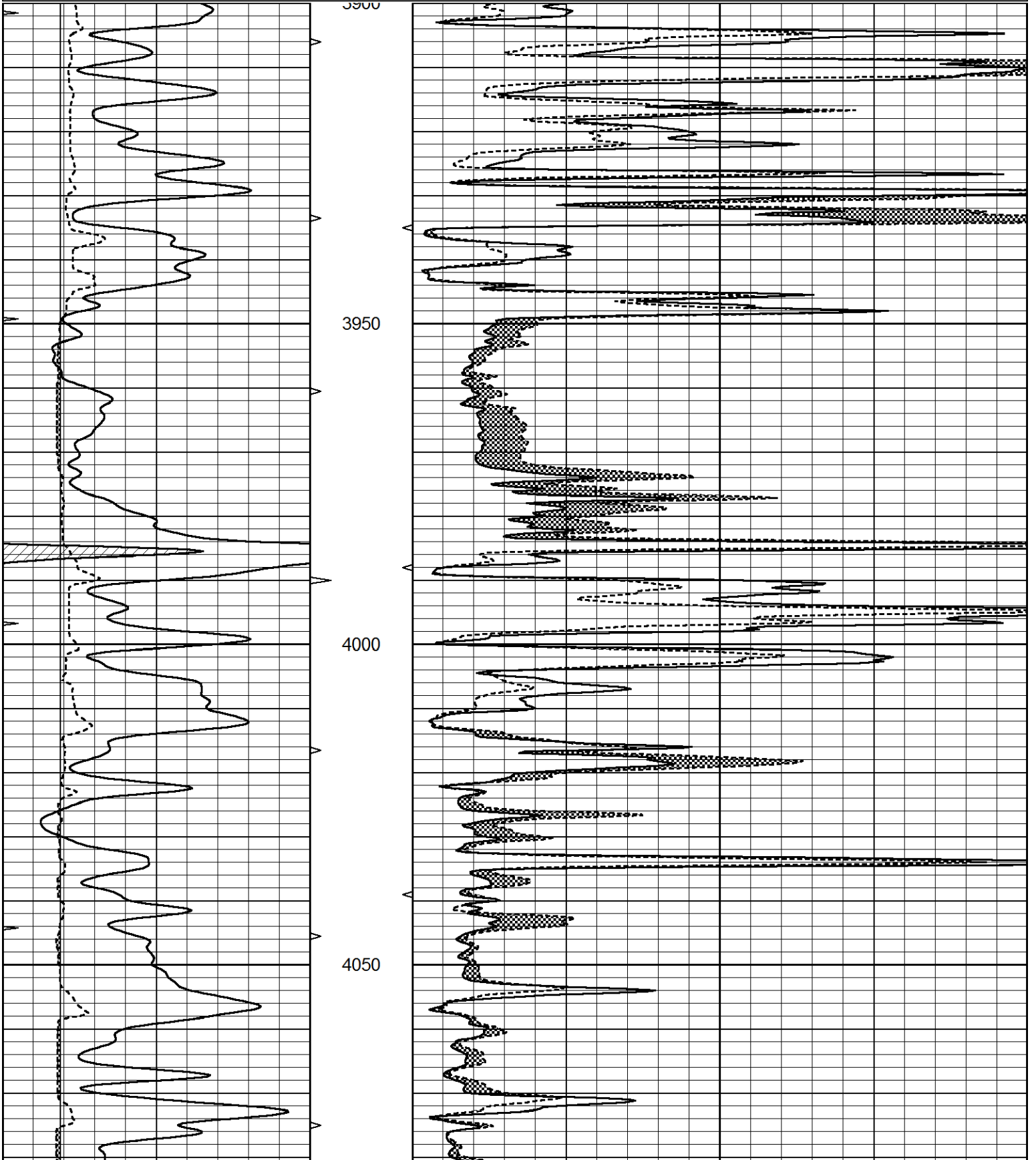
THANK YOU FOR USING ELI WIRELINE, HAYS, KS. (785) 628-6395
 DIRECTIONS: BREWSTER 5 NORTH, 1 EAST, 3/4 NORTH,
 EAST INTO.

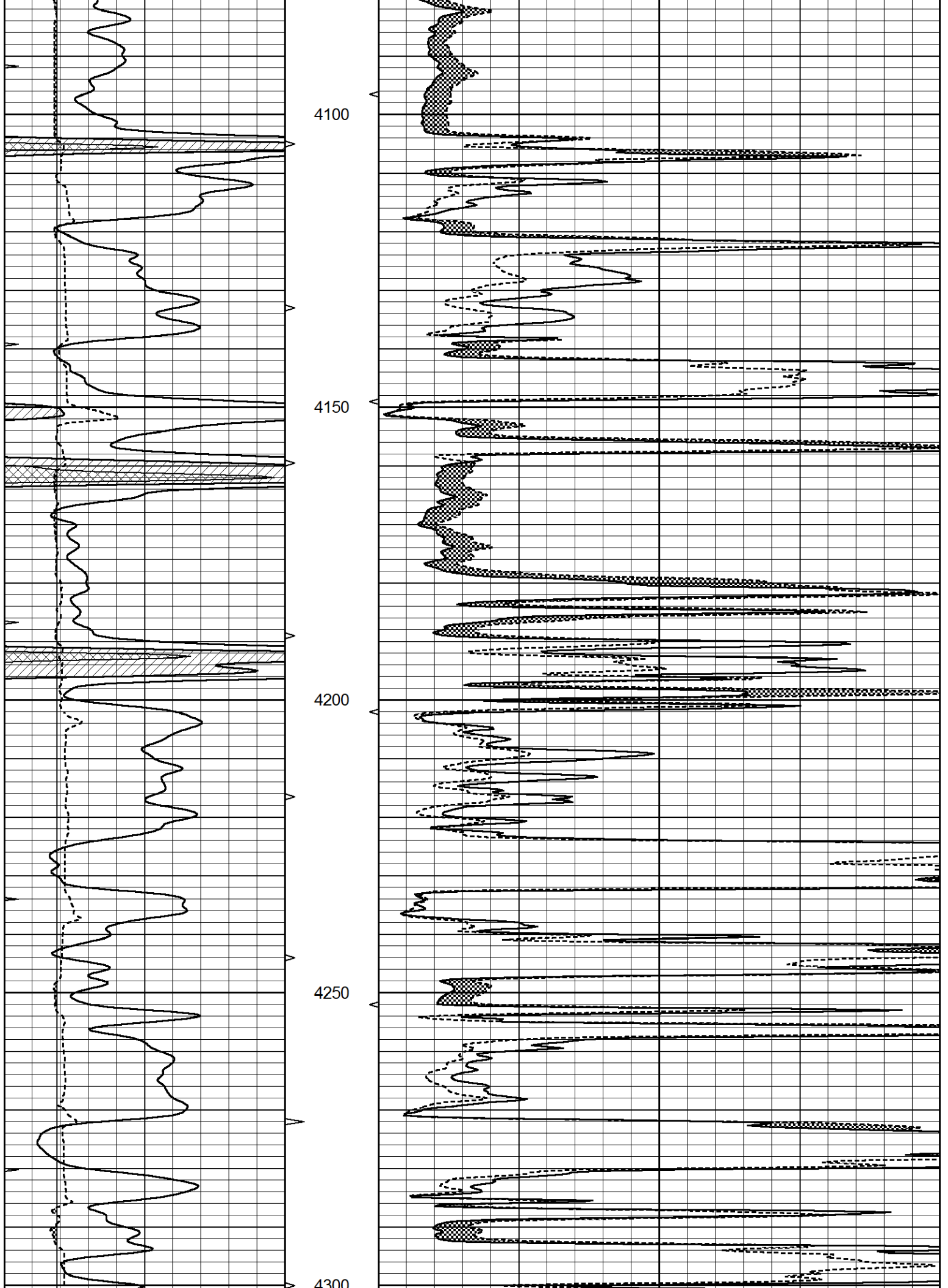


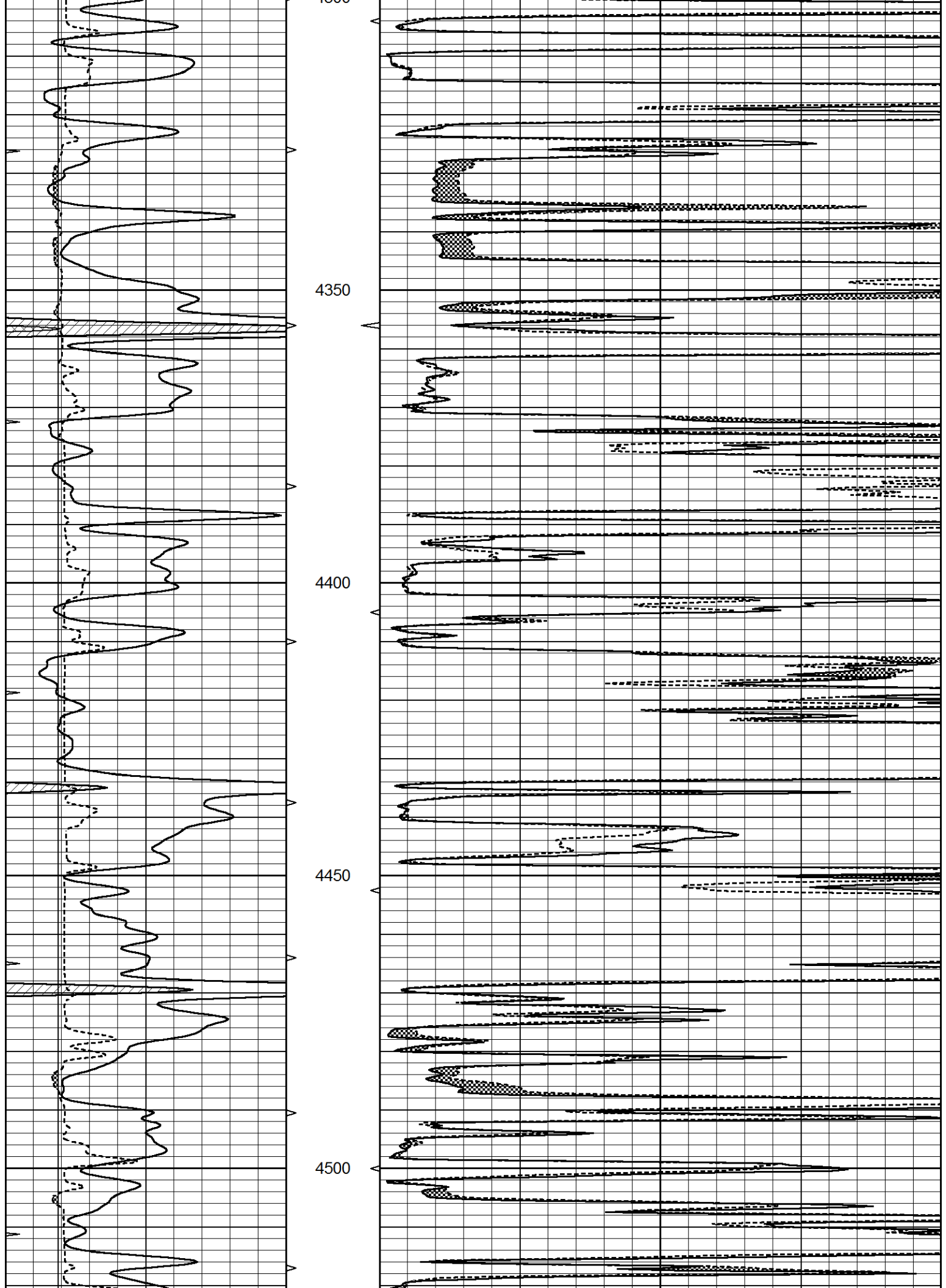
MAIN PASS

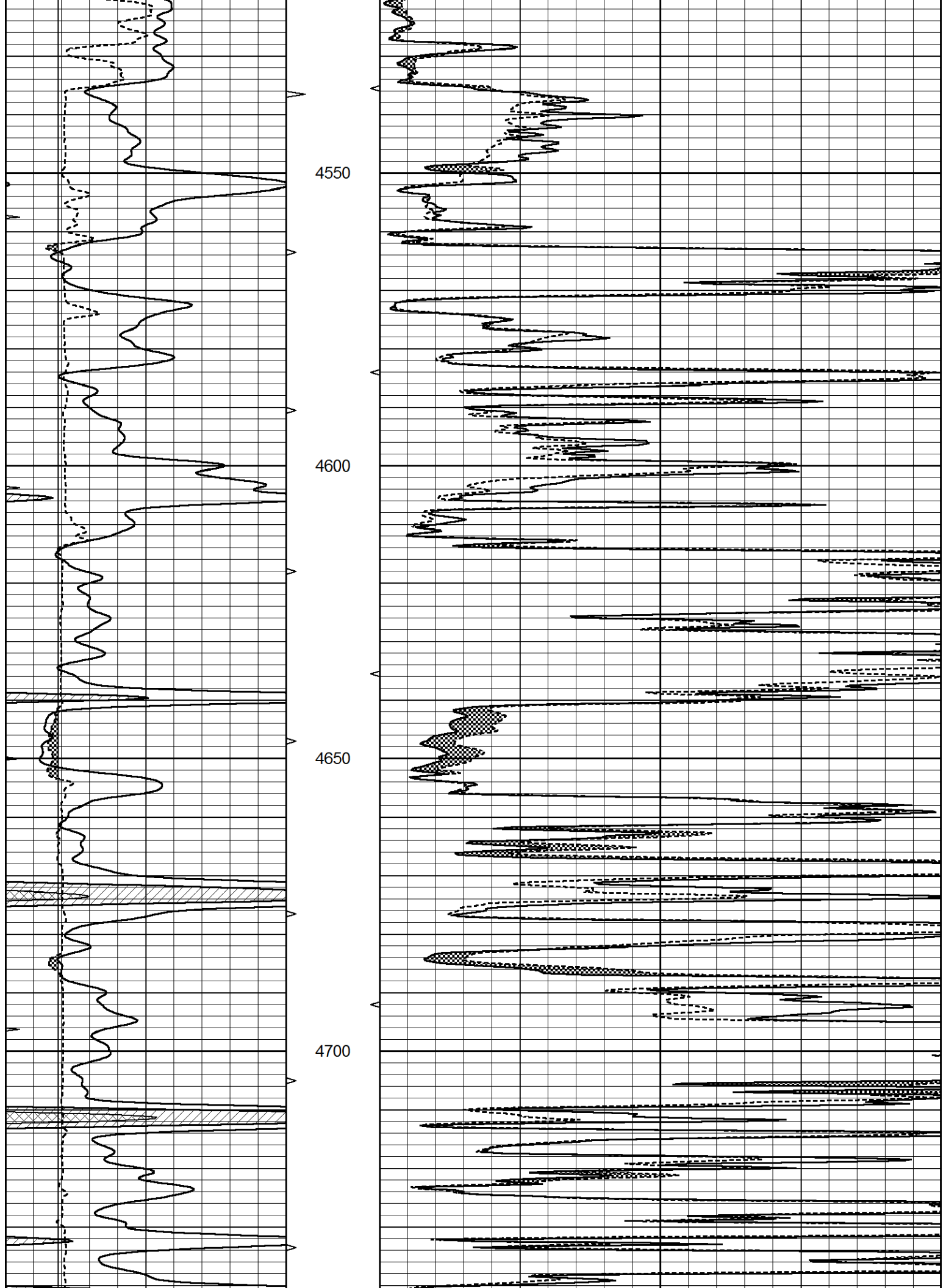
Database File 5037ddn.db
 Dataset Pathname pass5
 Presentation Format _micro
 Dataset Creation Wed Dec 16 15:19:00 2020
 Charted by Depth in Feet scaled 1:240

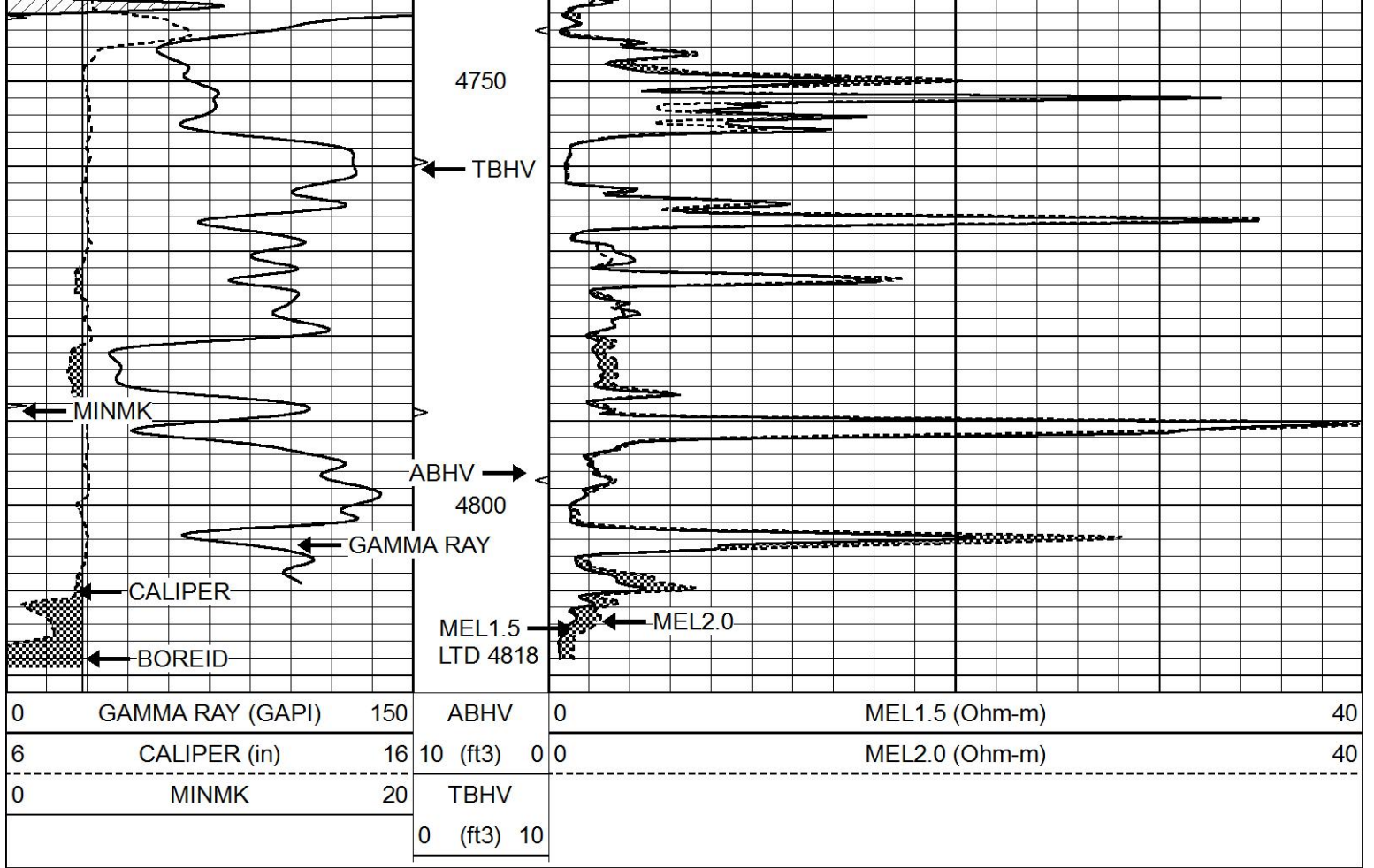
0	GAMMA RAY (GAPI)	150	ABHV	0	MEL1.5 (Ohm-m)	40
6	CALIPER (in)	16	10 (ft3)	0	MEL2.0 (Ohm-m)	40
0	MINMK	20	TBHV			
			0 (ft3)	10		







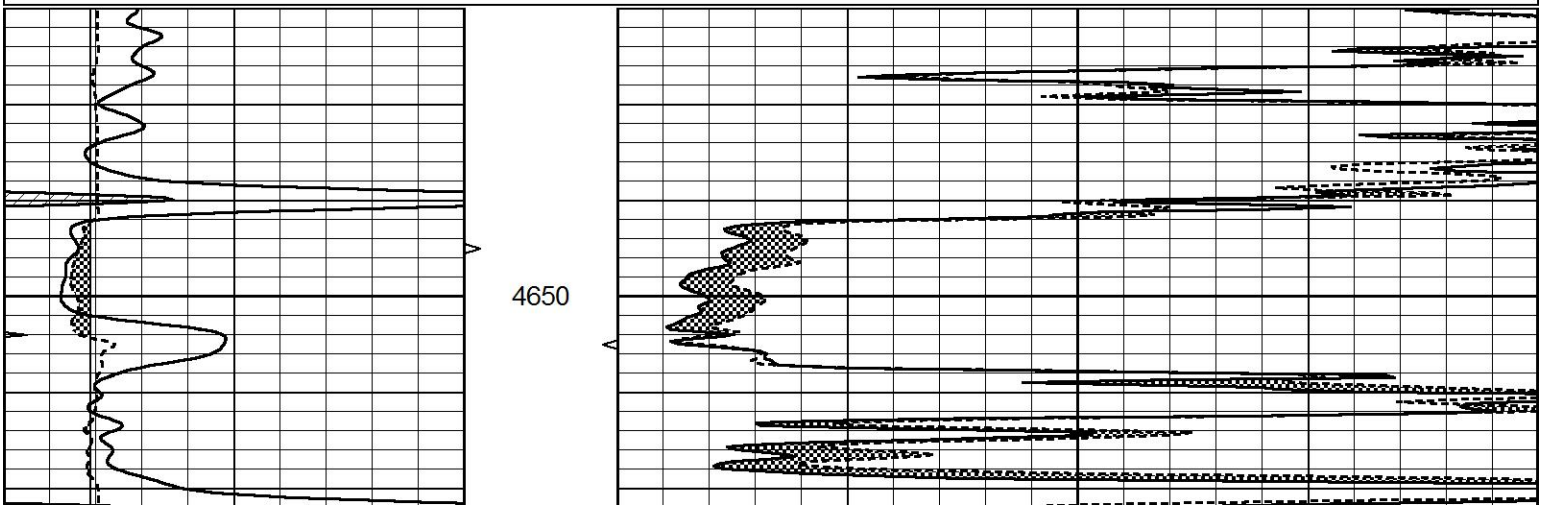


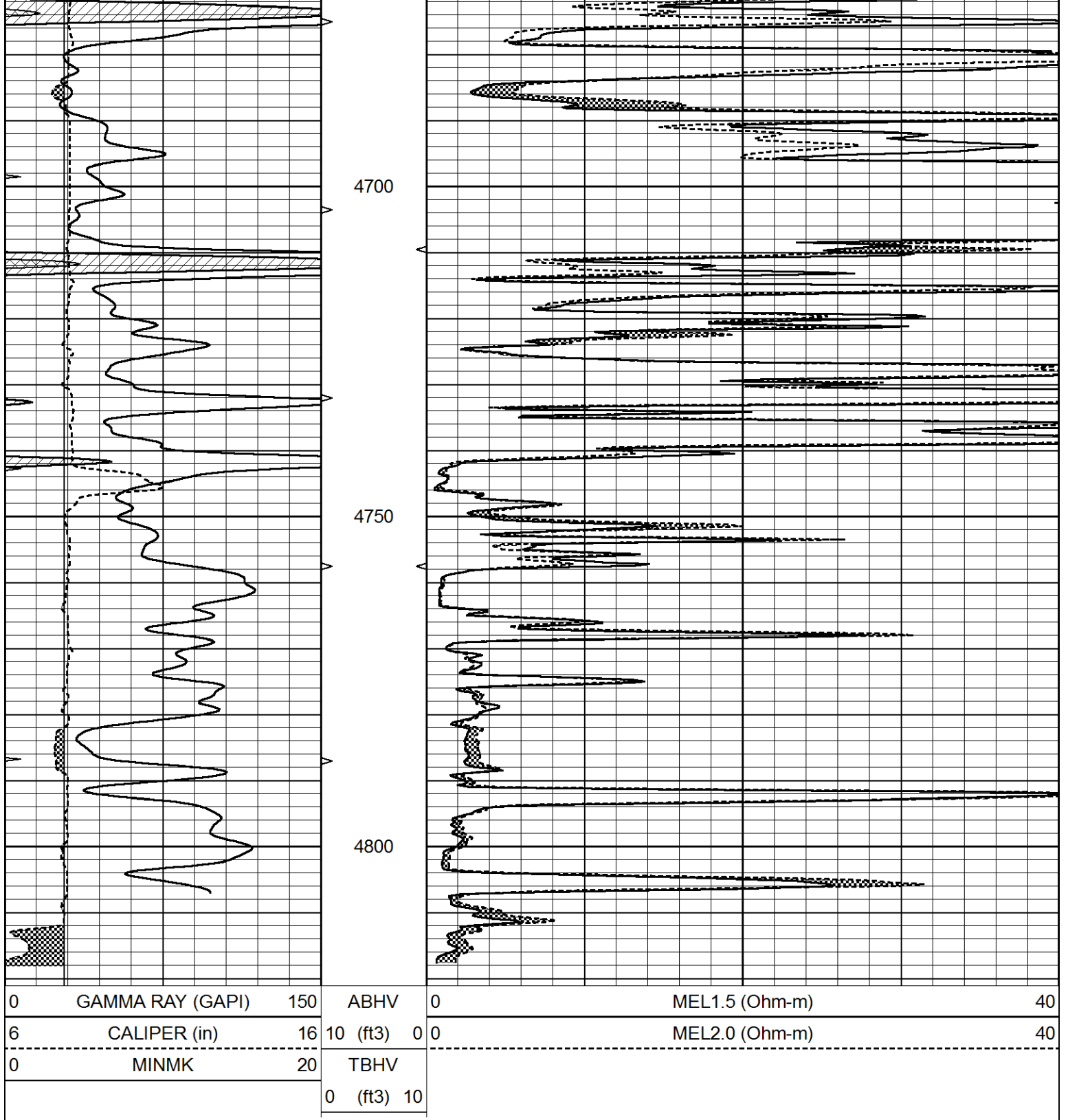


REPEAT SECTION

Database File 5037ddn.db
 Dataset Pathname pass4
 Presentation Format _micro
 Dataset Creation Wed Dec 16 15:11:23 2020
 Charted by Depth in Feet scaled 1:240

0	GAMMA RAY (GAPI)	150	ABHV	0	MEL1.5 (Ohm-m)	40
6	CALIPER (in)	16	10 (ft3)	0 0	MEL2.0 (Ohm-m)	40
0	MINMK	20	TBHV			
			0 (ft3)	10		





Calibration Report

Database File 5037ddn.db
 Dataset Pathname pass4
 Dataset Creation Wed Dec 16 15:11:23 2020

MICRO Calibration Report

Serial Number: Micro1
 Tool Model: Probel
 Performed: Thu Apr 02 16:23:04 2020

Caliper Calibration: Gain=3.980 Offset=5.151

	Low Cal	High Cal
References	9.500	13.000
Readings	0.308	2.032
1.5" Calibration:		
	Gain=36.134	Offset=-1.000
	Low Cal	High Cal
References	0.000	20.000
Readings	0.004	0.832
2" Calibration:		
	Gain=38.000	Offset=-0.800
	Low Cal	High Cal
References	0.000	20.000
Readings	0.022	0.793
Gamma Ray Calibration Report		
Serial Number:	GR5	
Tool Model:	OPEN	
Performed:	Thu Jul 30 23:16:16 2020	
Calibrator Value:	1.0	GAPI
Background Reading:	0.0	cps
Calibrator Reading:	1.0	cps
Sensitivity:	0.6000	GAPI/cps