



DUAL INDUCTION LOG

Company VAL ENERGY, INC.

Well WAYNE'S TRUST #1-9

Field WILDCAT

County THOMAS State KANSAS

Location: API #: 15-193-21080-0000

2200' FNL & 1955' FWL

SEC 9 TWP 7S RGE 36W

Other Services
CDL/CNL
ML

Elevation

Permanent Datum

GROUND LEVEL Elevation

3373

Log Measured From

KELLY BUSHING 5' A.G.L.

Drilling Measured From

KELLY BUSHING

K.B. 3378
D.F. 3376
G.L. 3373

Date	12/16/20
Run Number	ONE
Depth Driller	4820
Depth Logger	4818
Bottom Logged Interval	4817
Top Log Interval	00
Casing Driller	8 5/8" @ 344
Casing Logger	344
Bit Size	7 7/8"
Type Fluid in Hole	CHEMICAL MUD
Density / Viscosity	9.3/55
pH / Fluid Loss	10.5/7.2
Source of Sample	FLOWLINE
Rm @ Meas. Temp	.75 @ 60F
Rmf @ Meas. Temp	.56 @ 60F
Rmc @ Meas. Temp	.90 @ 60F
Source of Rmf / Rmc	MEASURED
Rm @ BHT	.36 @ 123F
Time Circulation Stopped	2 HOURS
Time Logger on Bottom	////
Maximum Recorded Temperature	123F
Equipment Number	1523
Location	HAYS, KANSAS
Recorded By	GUS PFANENSTIEL
Witnessed By	TIM PRIEST

<<< Fold Here >>>

All interpretations are opinions based on inferences from electrical or other measurements and we cannot and do not guarantee the accuracy or correctness of any interpretation, and we shall not, except in the case of gross or willful negligence on our part, be liable or responsible for any loss, costs, damages, or expenses incurred or sustained by anyone resulting from any interpretation made by any of our officers, agents or employees. These interpretations are also subject to our general terms and conditions set out in our current Price Schedule.

Comments

THANK YOU FOR USING ELI WIRELINE, HAYS, KS. (785) 628-6395

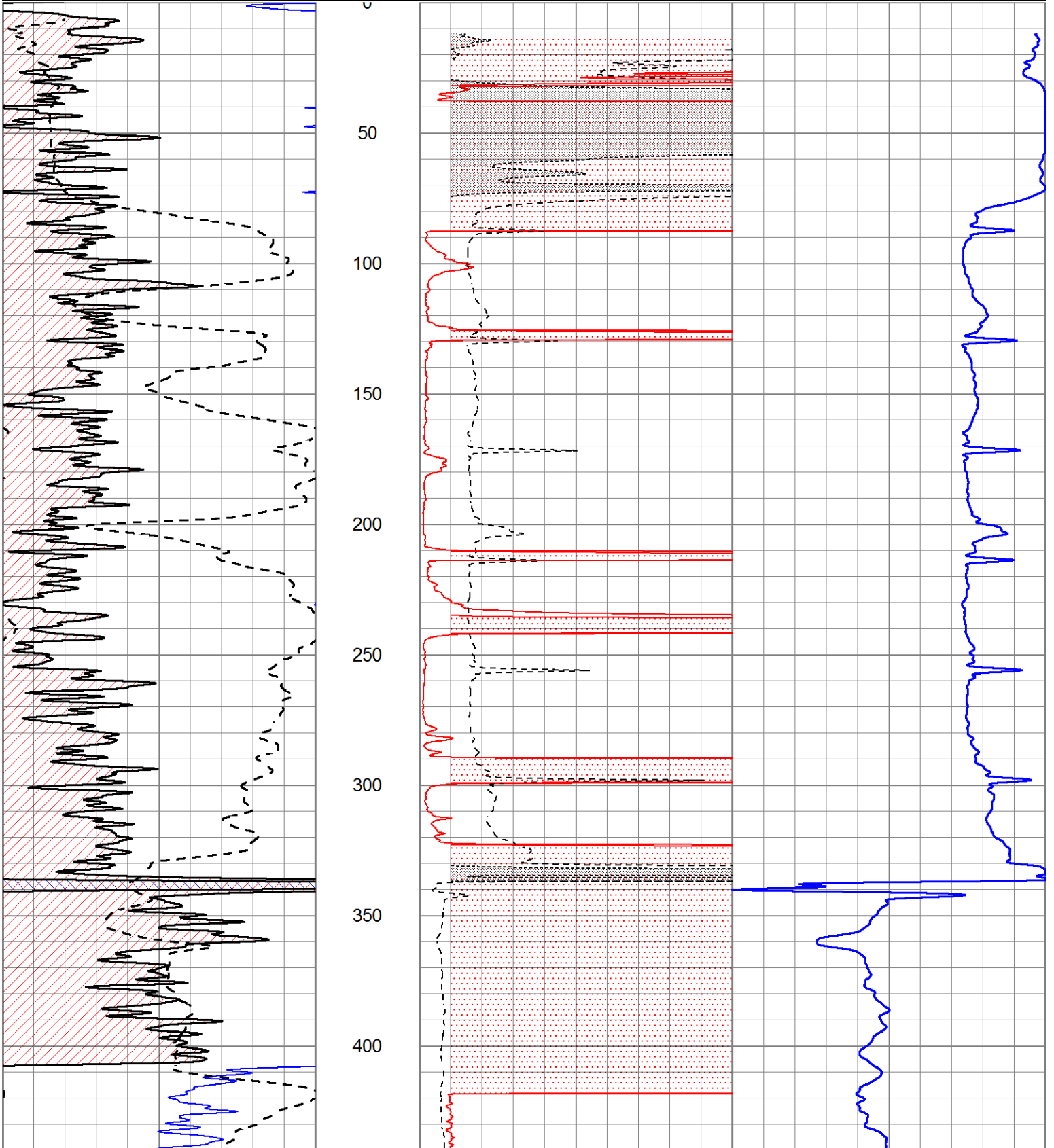
DIRECTIONS: BREWSTER 5 NORTH, 1 EAST, 3/4 NORTH, EAST INTO.

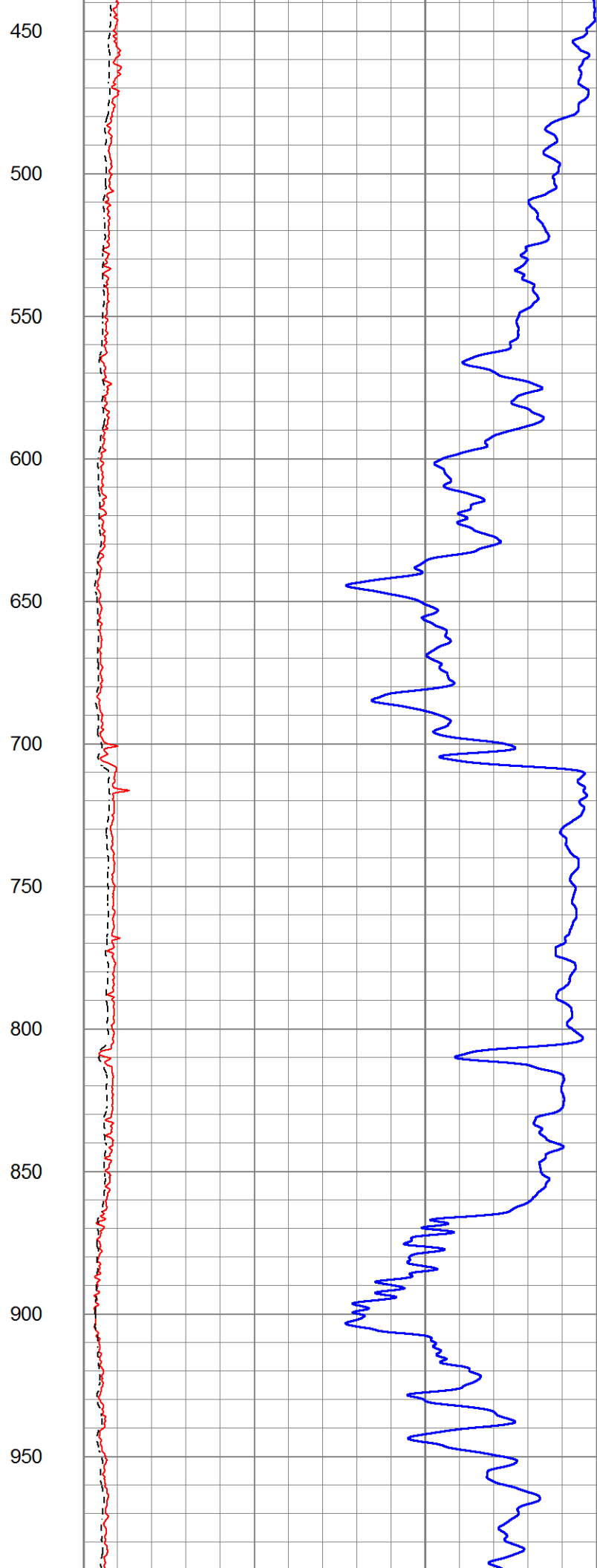
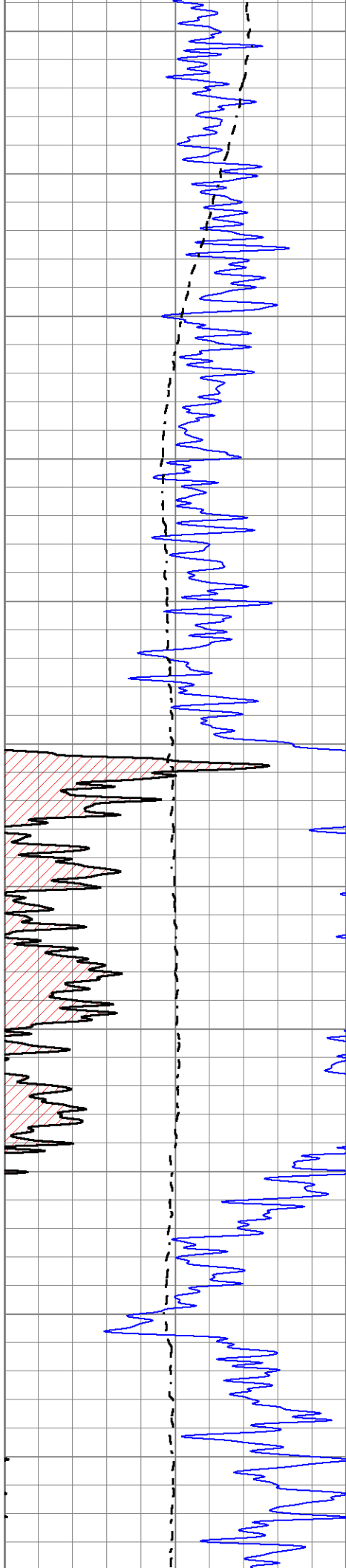


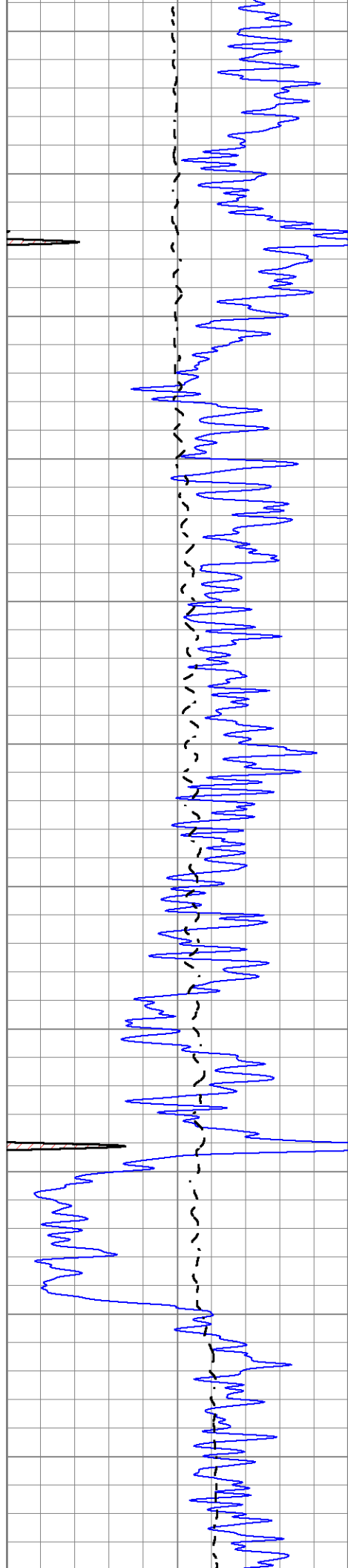
MAIN PASS

Database File 5037ddn.db
 Dataset Pathname pass3DIL
 Presentation Format _dil2
 Dataset Creation Wed Dec 16 15:00:30 2020
 Charted by Depth in Feet scaled 1:600

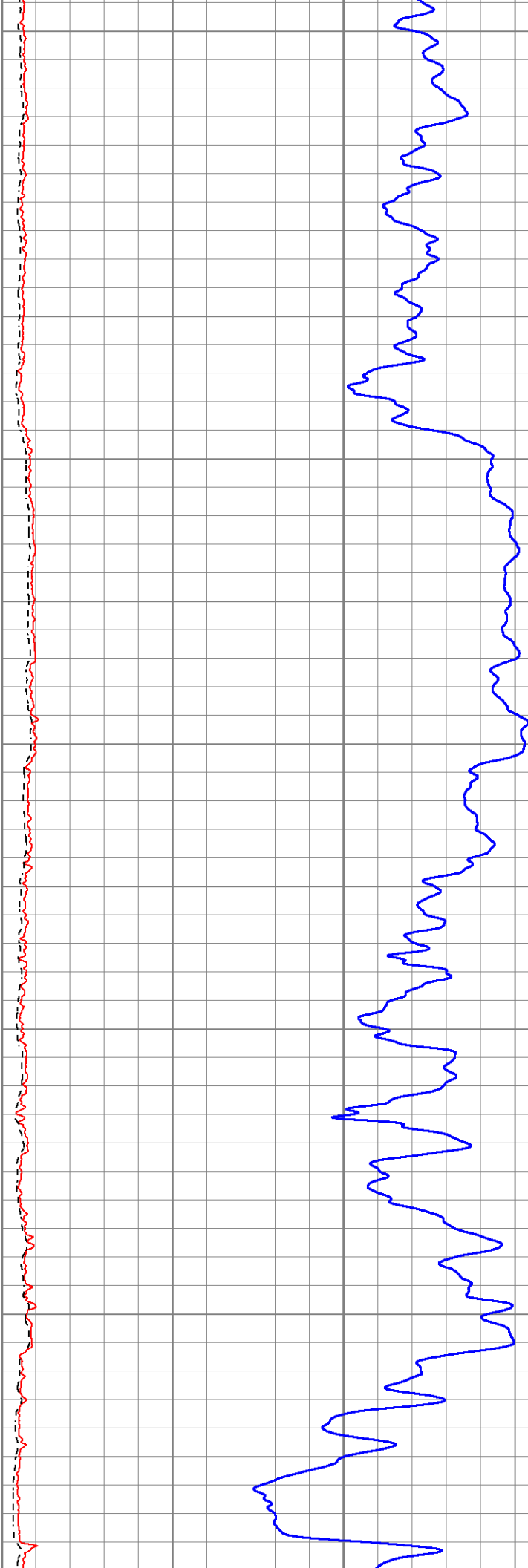
0	Gamma Ray (GAPI)	150	1000	CILD (mmho/m)	0
-100	SP (mV)	100	0	RLL3 (Ohm-m)	50
-----			0	RILD (Ohm-m)	50
			50	RILD X10 (Ohm-m)	500
			50	RLL3 X10 (Ohm-m)	500

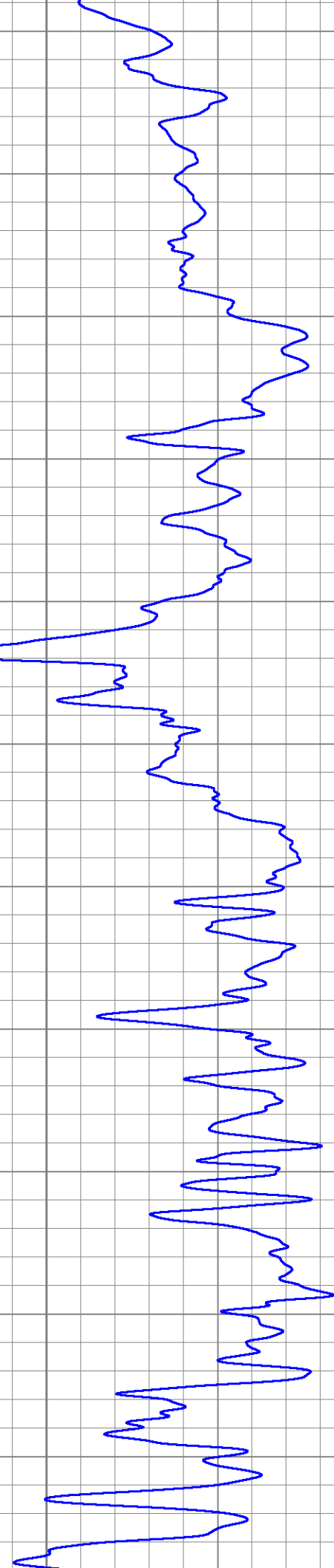
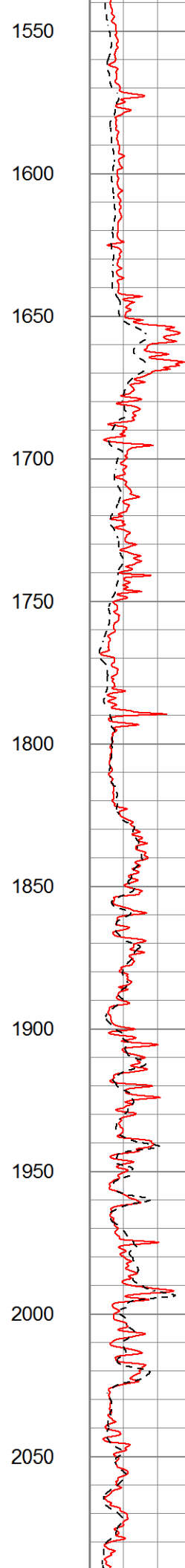
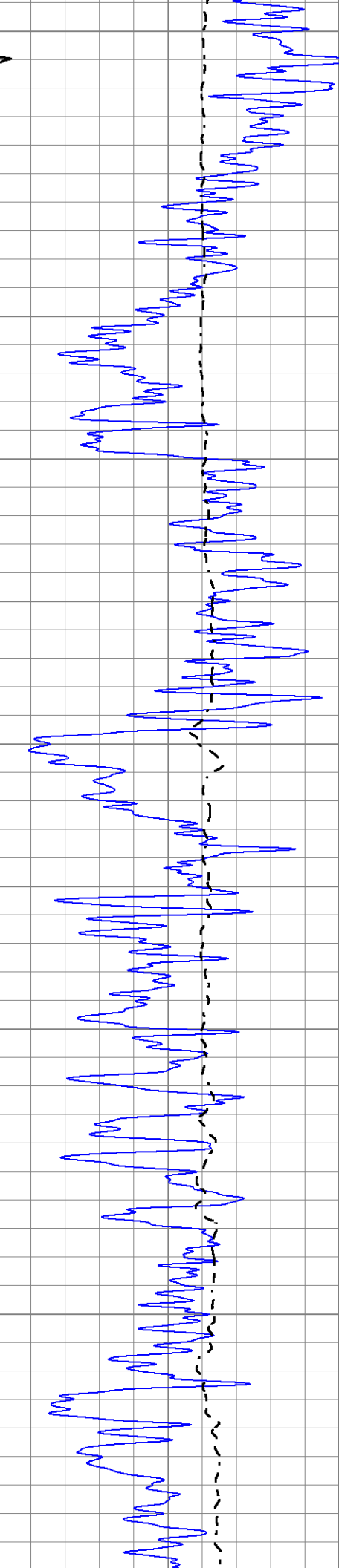


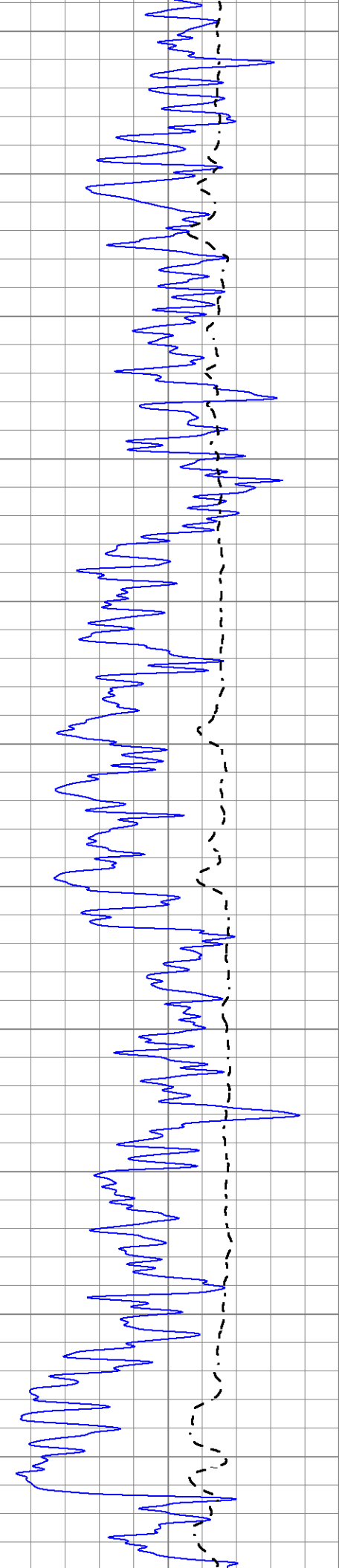




1000
1050
1100
1150
1200
1250
1300
1350
1400
1450
1500







2100

2150

2200

2250

2300

2350

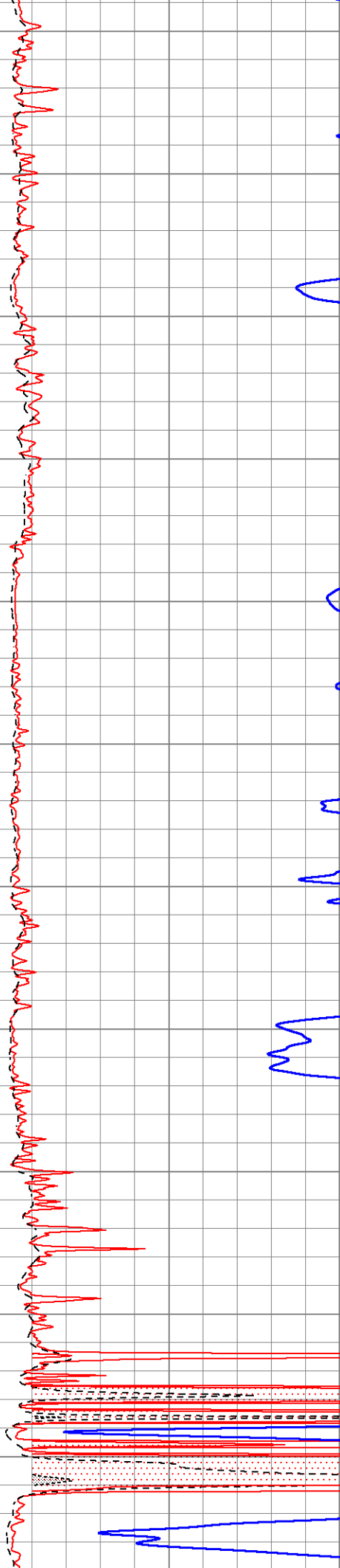
2400

2450

2500

2550

2600



2100

2150

2200

2250

2300

2350

2400

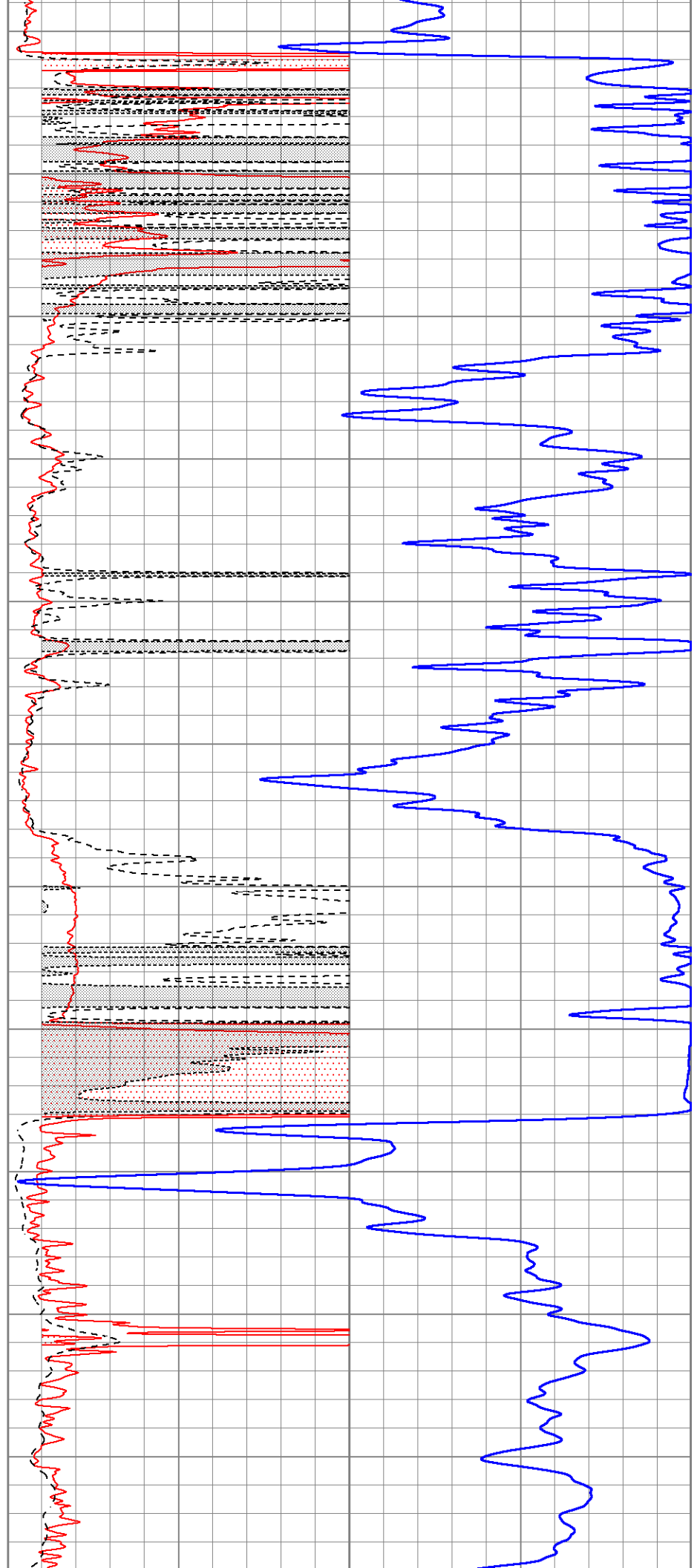
2450

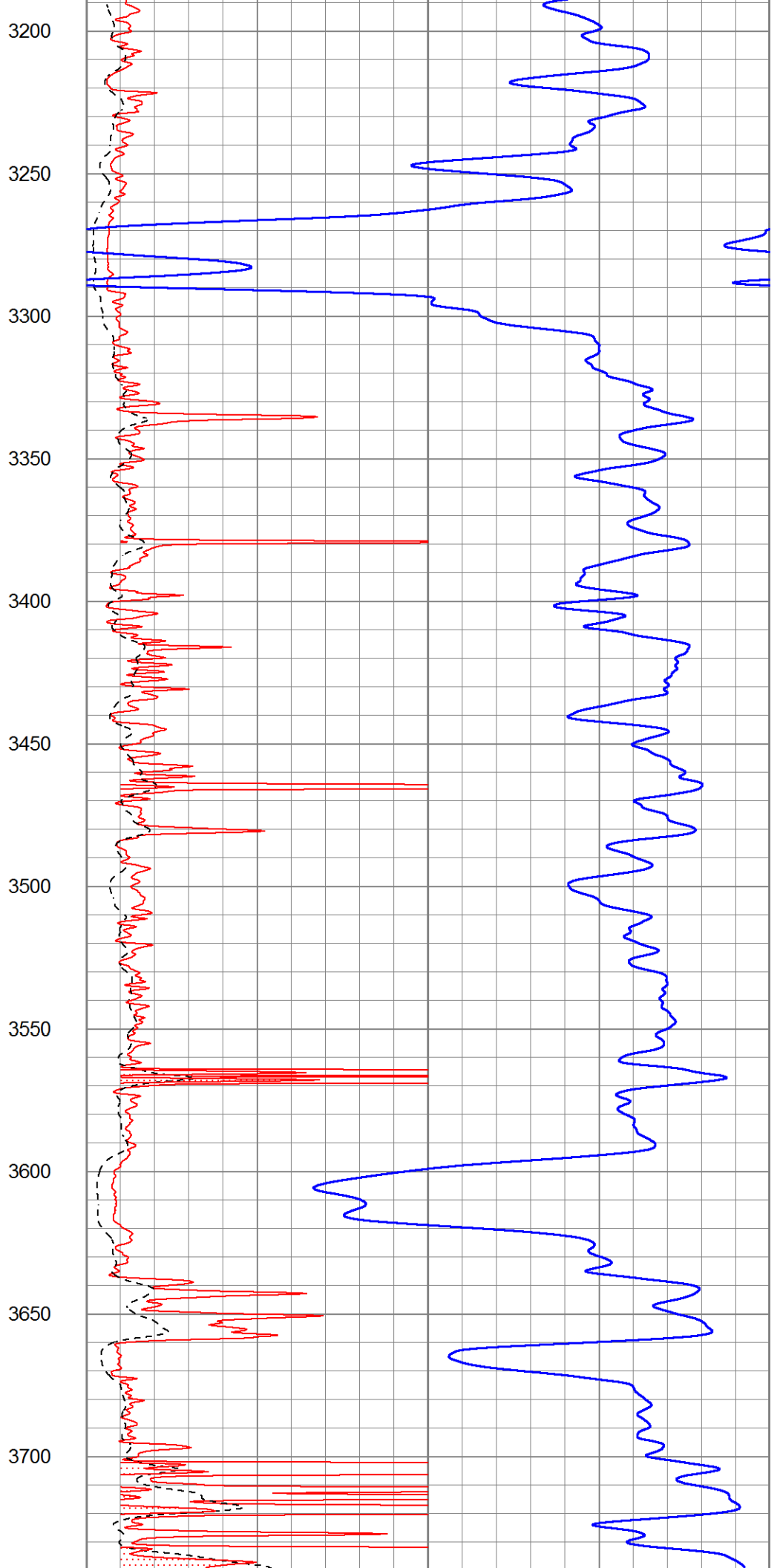
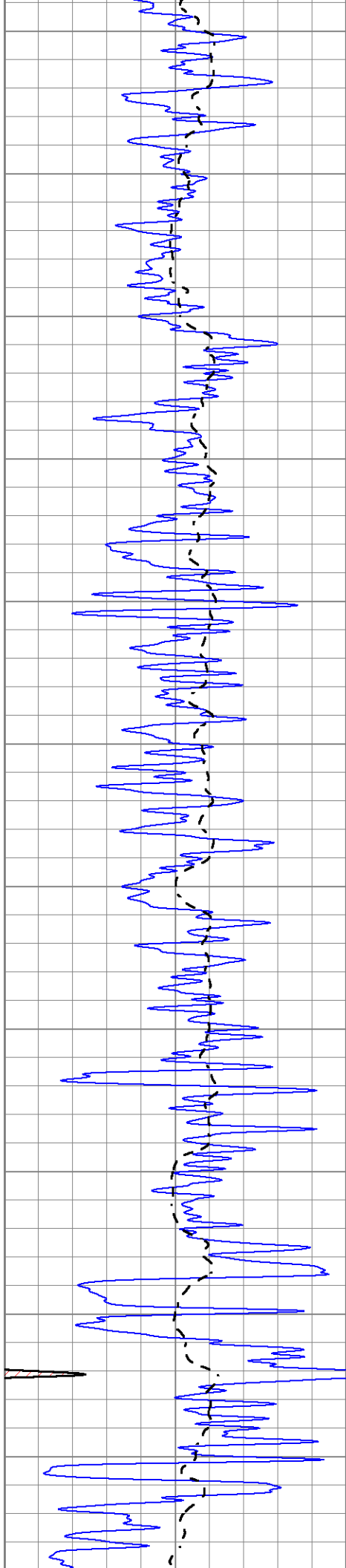
2500

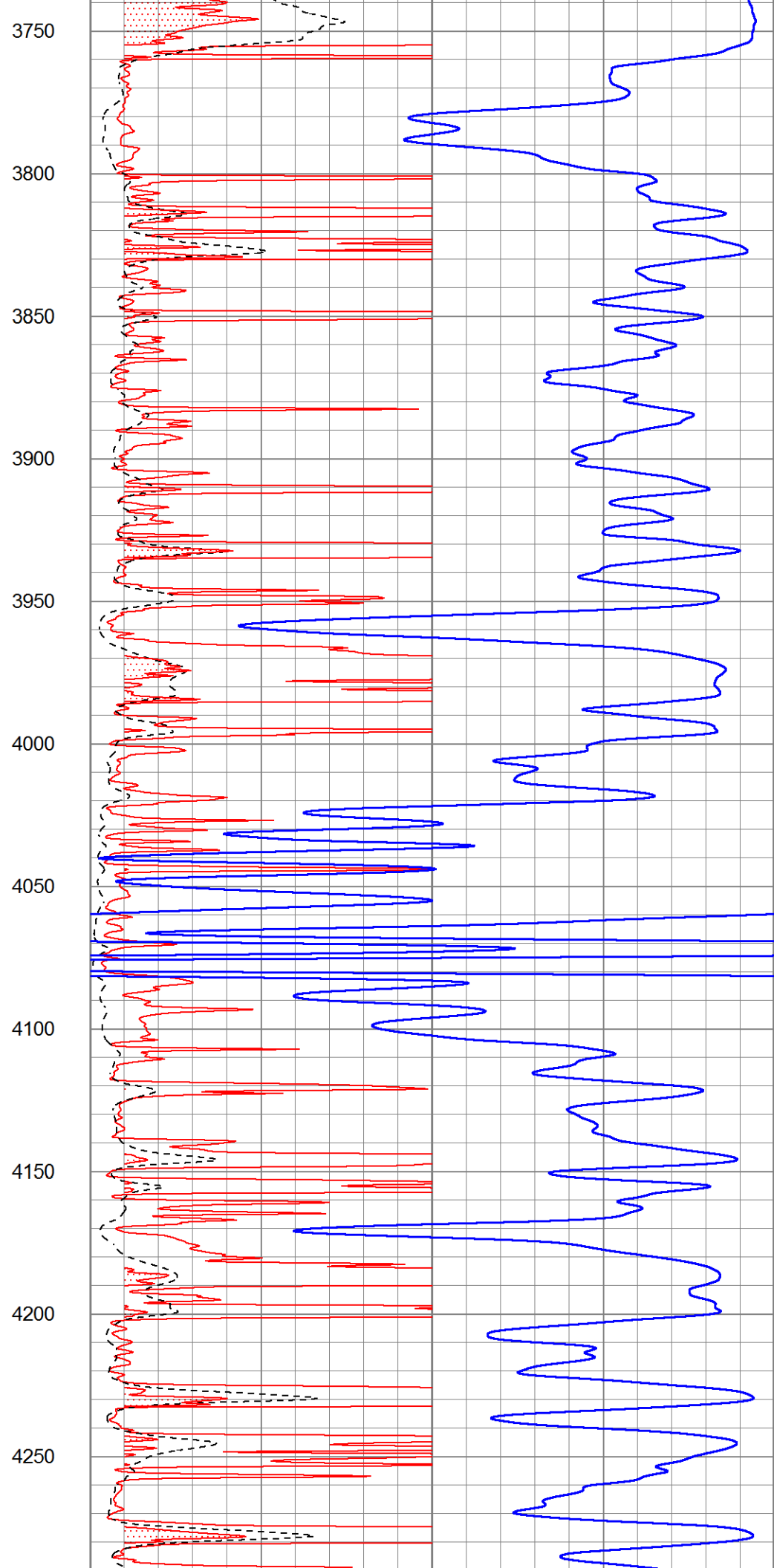
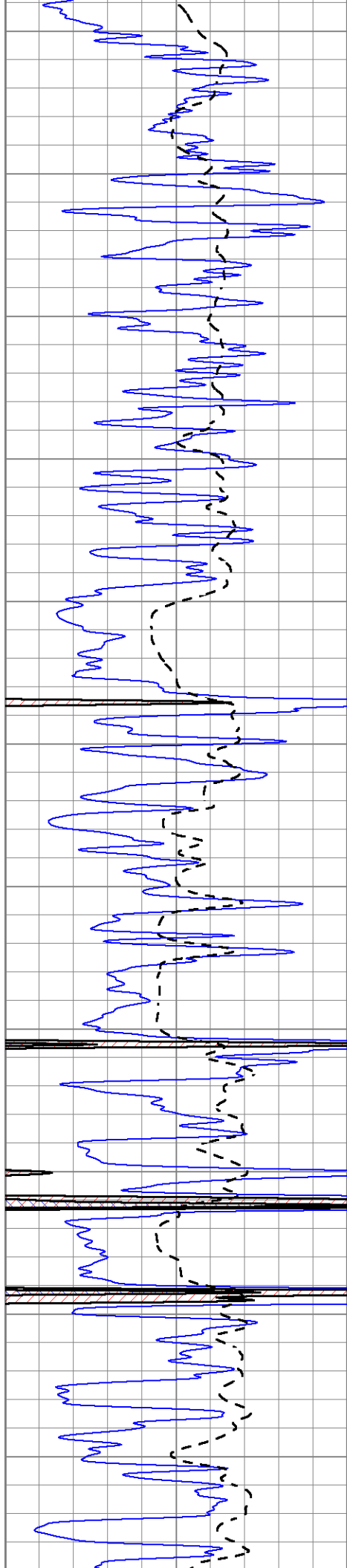
2550

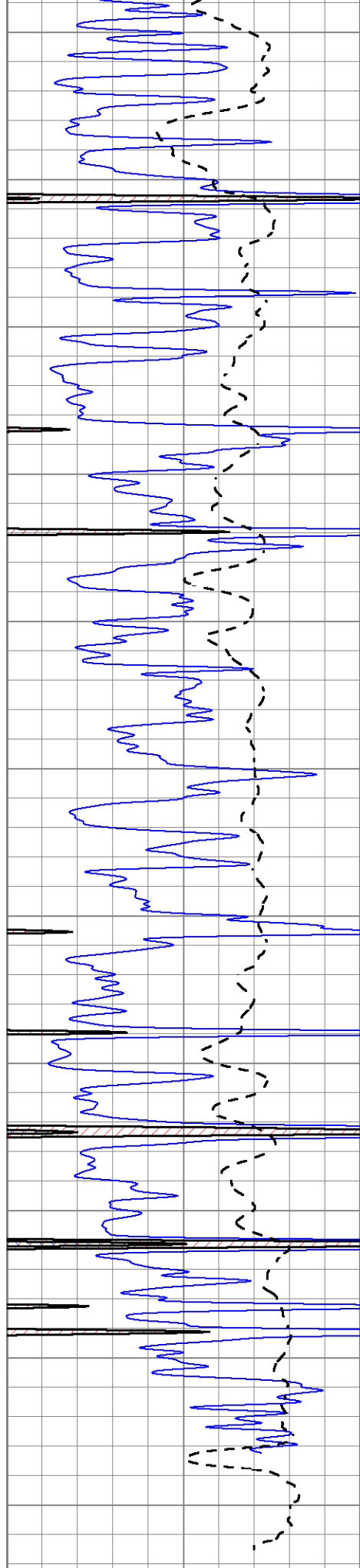
2600

2650
2700
2750
2800
2850
2900
2950
3000
3050
3100
3150

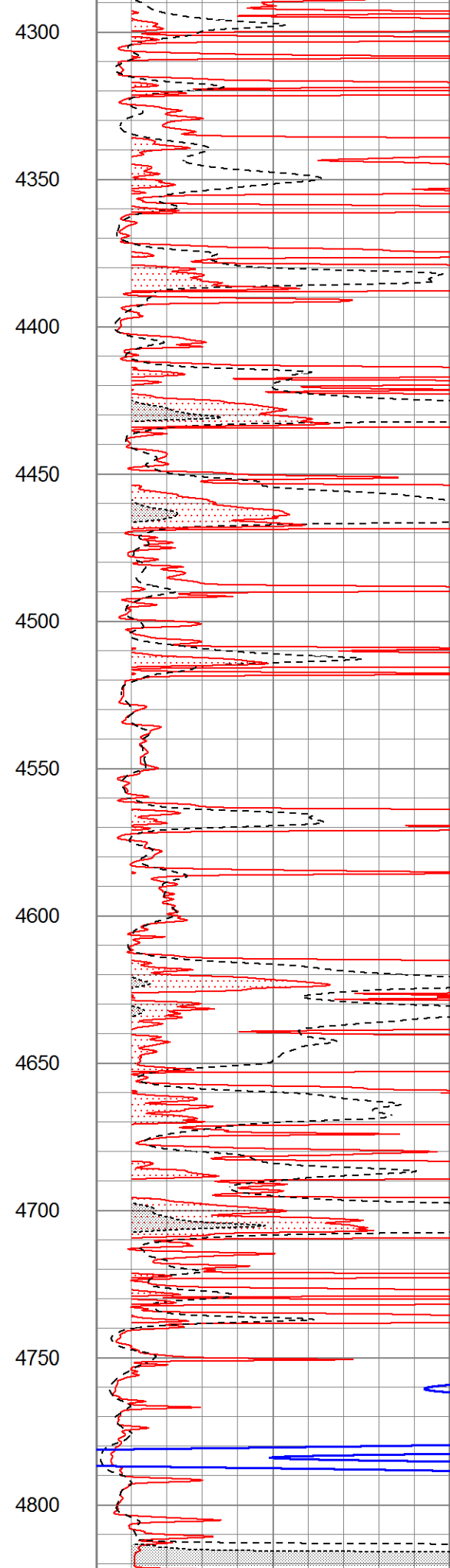




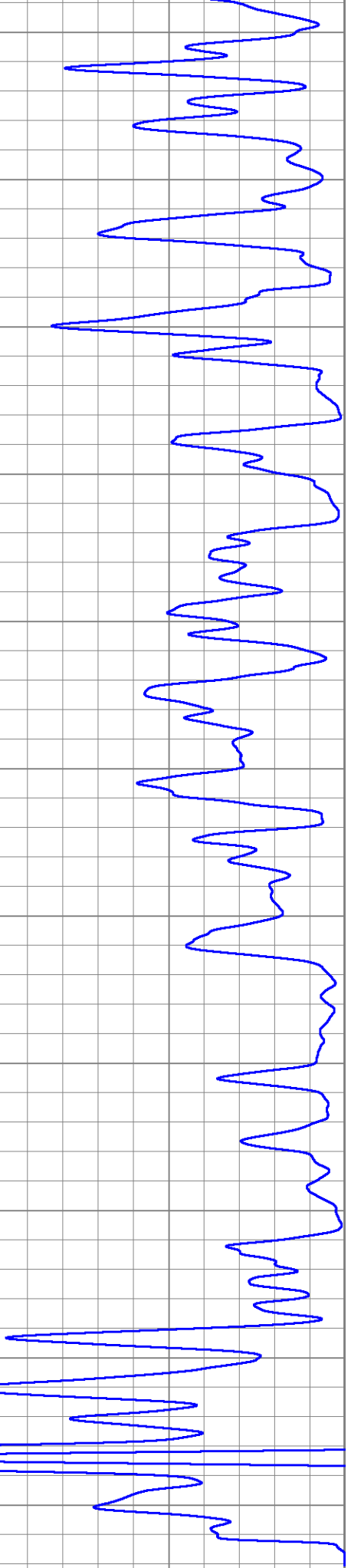




0 Gamma Ray (GAPI) 150



1000 CILD (mmho/m) 0



0

-100 SP (mV) 100

0 RLL3 (Ohm-m) 50

0 RILD (Ohm-m) 50

50 RILD X10 (Ohm-m) 500

50 RLL3 X10 (Ohm-m) 500

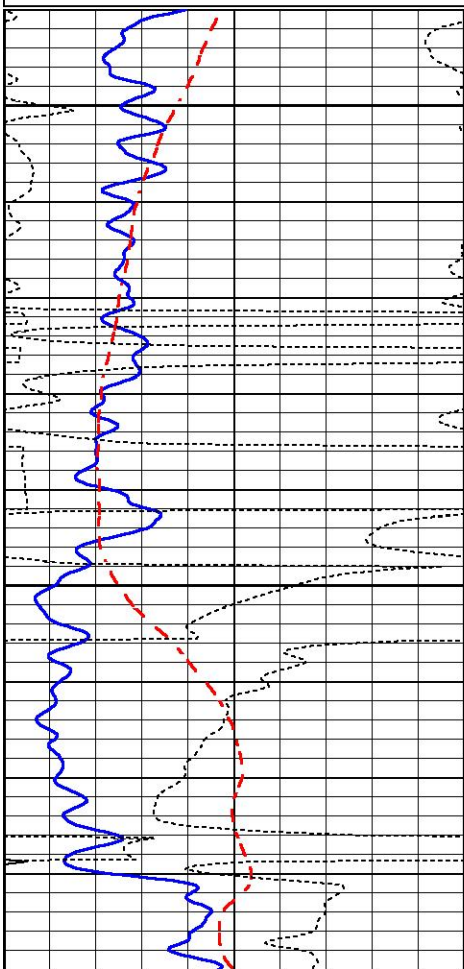


MAIN PASS

Database File 5037ddn.db
 Dataset Pathname pass3DIL
 Presentation Format _dil
 Dataset Creation Wed Dec 16 15:00:30 2020
 Charted by Depth in Feet scaled 1:240

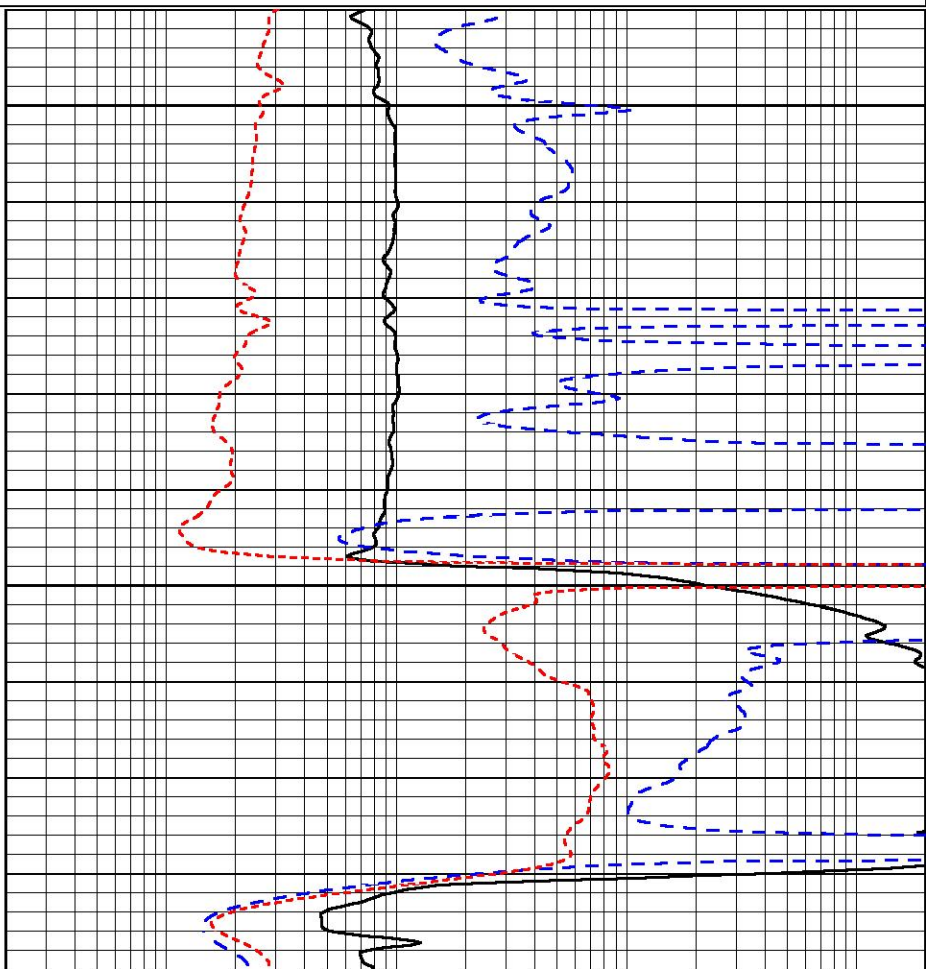
0 GAMMA RAY (GAPI) 150
 -100 SP (mV) 100
 -250 Rxo/Rt 50
 0 MINMK 20

0.2 SHALLOW GUARD (Ohm-m) 2000
 0.2 DEEP INDUCTION (Ohm-m) 2000
 0.2 MEDIUM INDUCTION (Ohm-m) 2000



2950

3000



0 GAMMA RAY (GAPI) 150
 -100 SP (mV) 100
 -250 Rxo/Rt 50
 0 MINMK 20

0.2 SHALLOW GUARD (Ohm-m) 2000
 0.2 DEEP INDUCTION (Ohm-m) 2000
 0.2 MEDIUM INDUCTION (Ohm-m) 2000



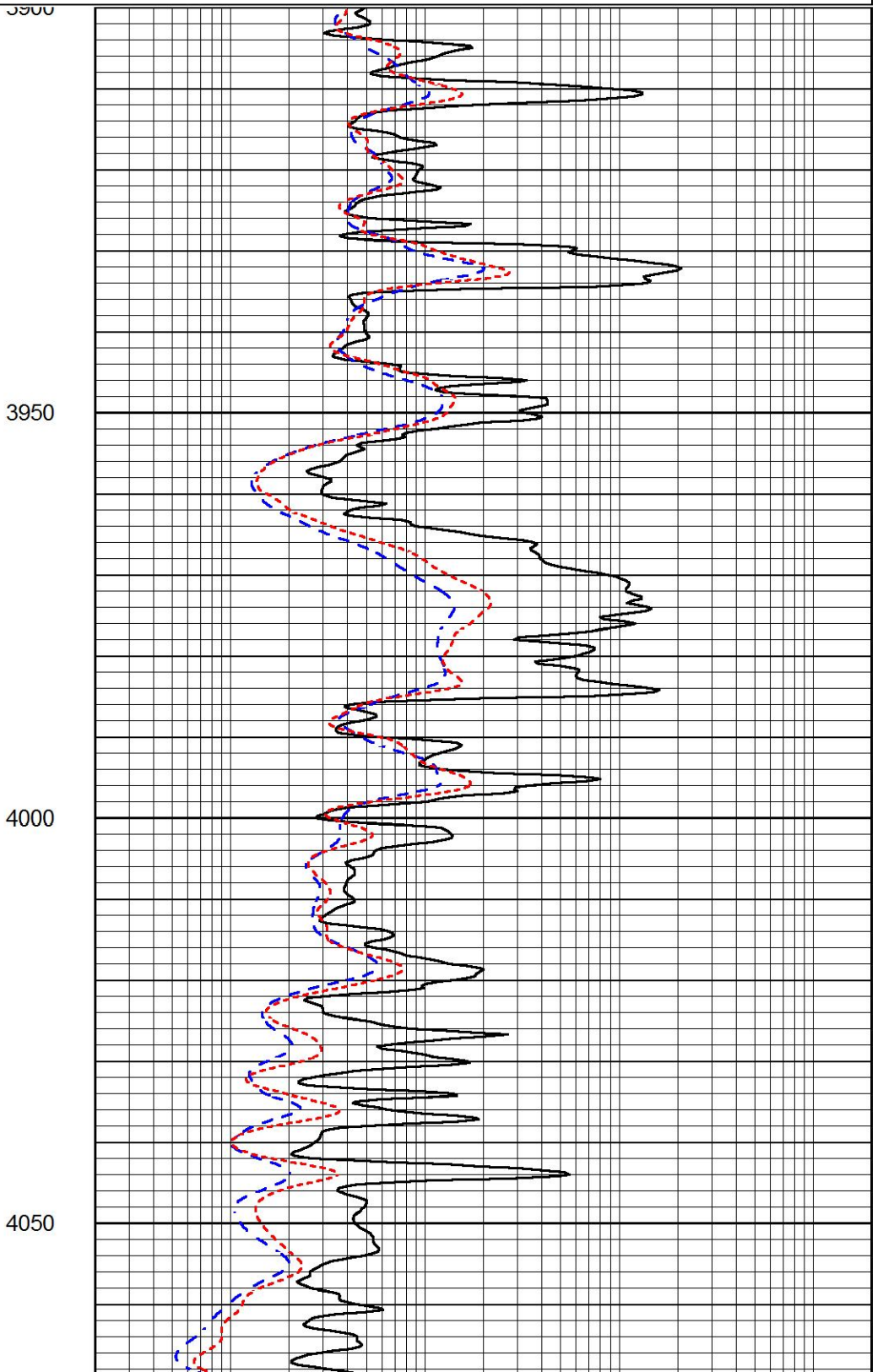
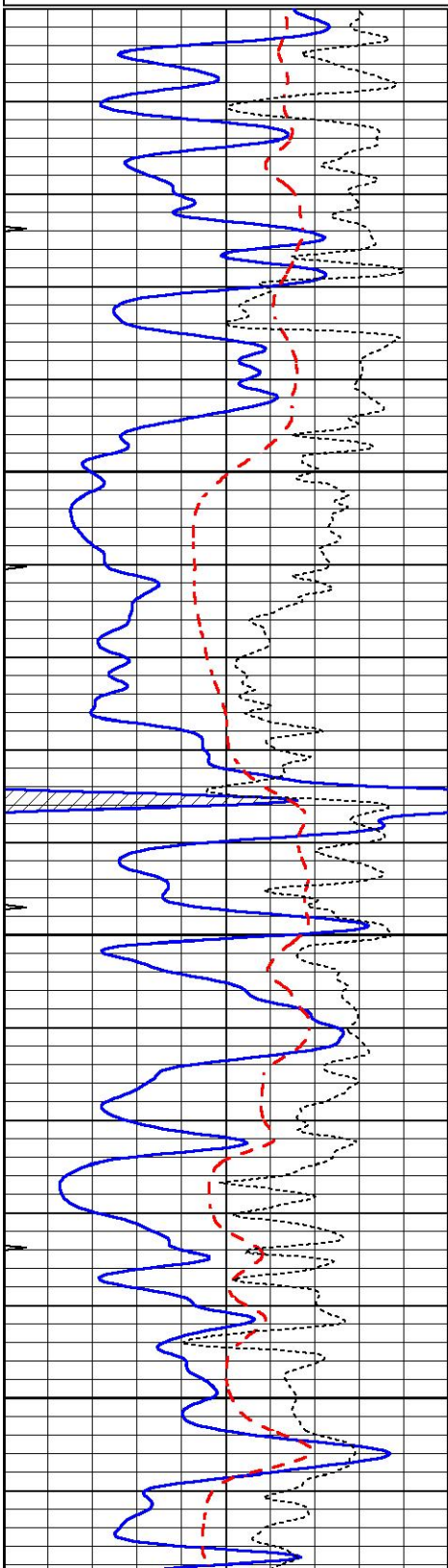
MAIN PASS

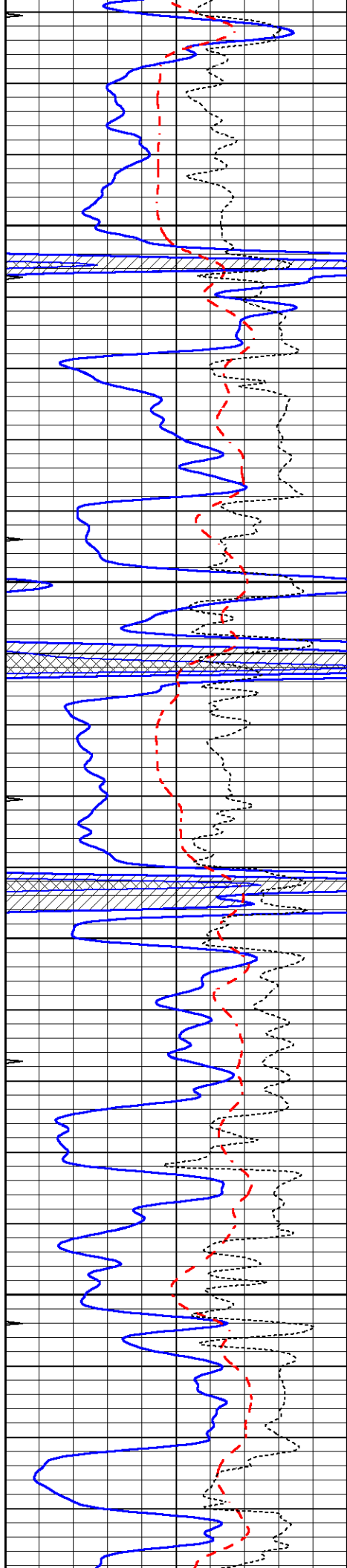
MAIN PASS

Database File 5037ddn.db
 Dataset Pathname pass3DIL
 Presentation Format _dil
 Dataset Creation Wed Dec 16 15:00:30 2020
 Charted by Depth in Feet scaled 1:240

0	GAMMA RAY (GAPI)	150
-100	SP (mV)	100
-250	Rxo/Rt	50
0	MINMK	20

0.2	SHALLOW GUARD (Ohm-m)	2000
0.2	DEEP INDUCTION (Ohm-m)	2000
0.2	MEDIUM INDUCTION (Ohm-m)	2000



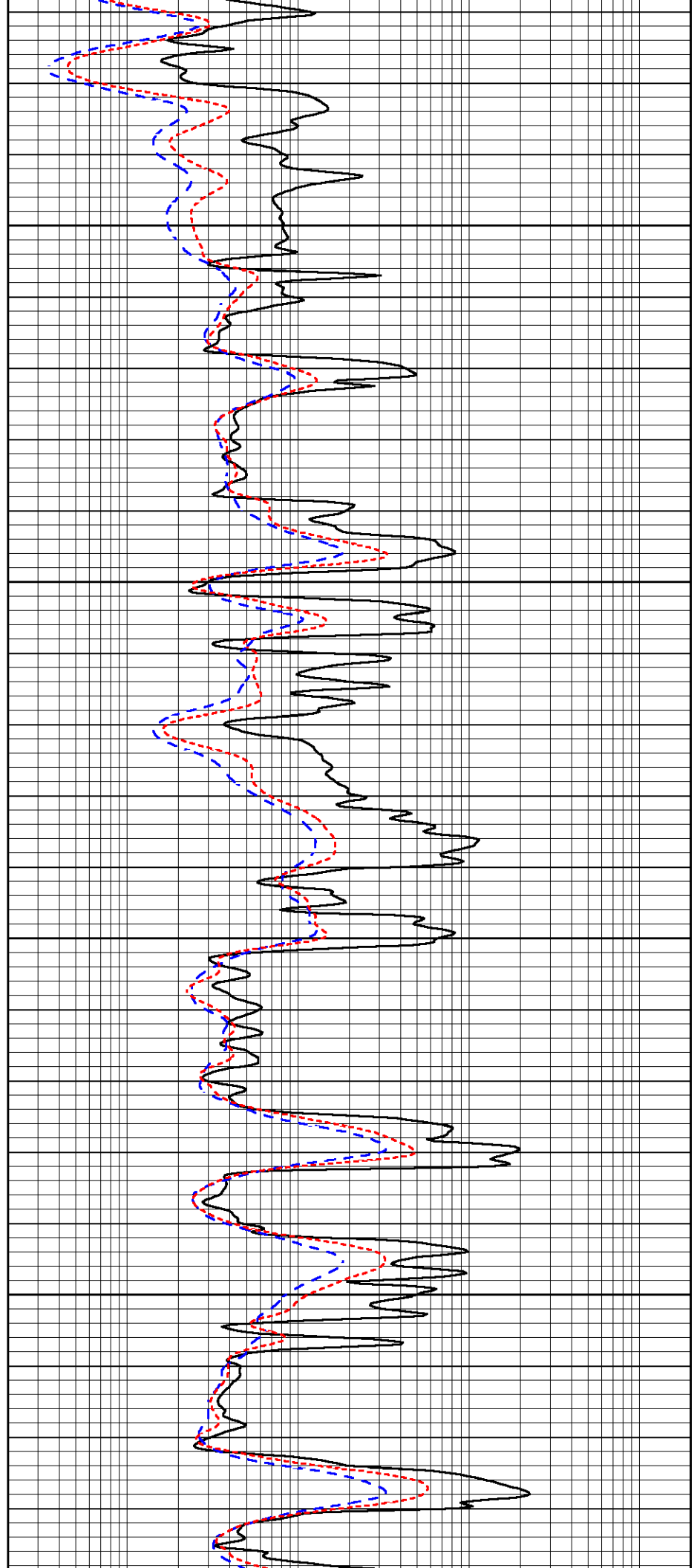


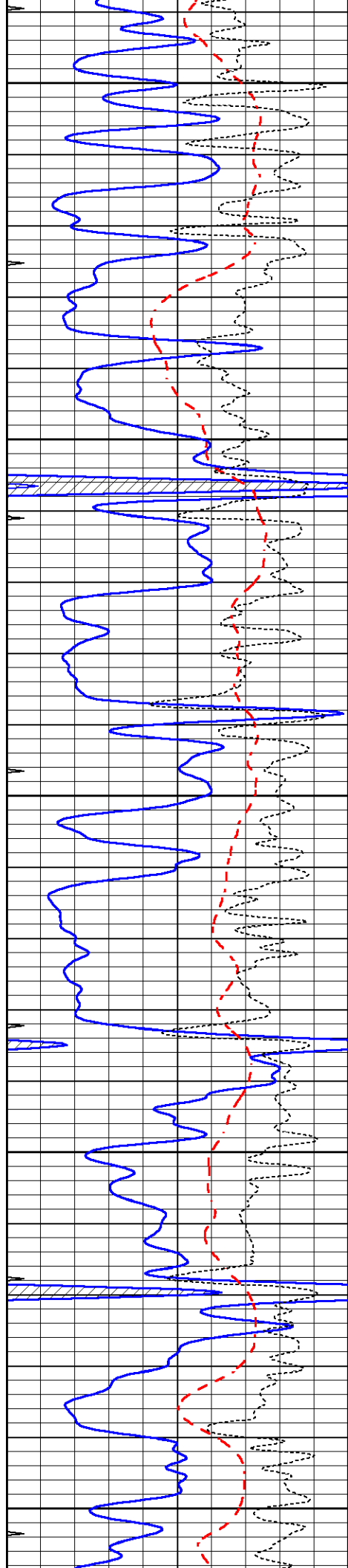
4100

4150

4200

4250





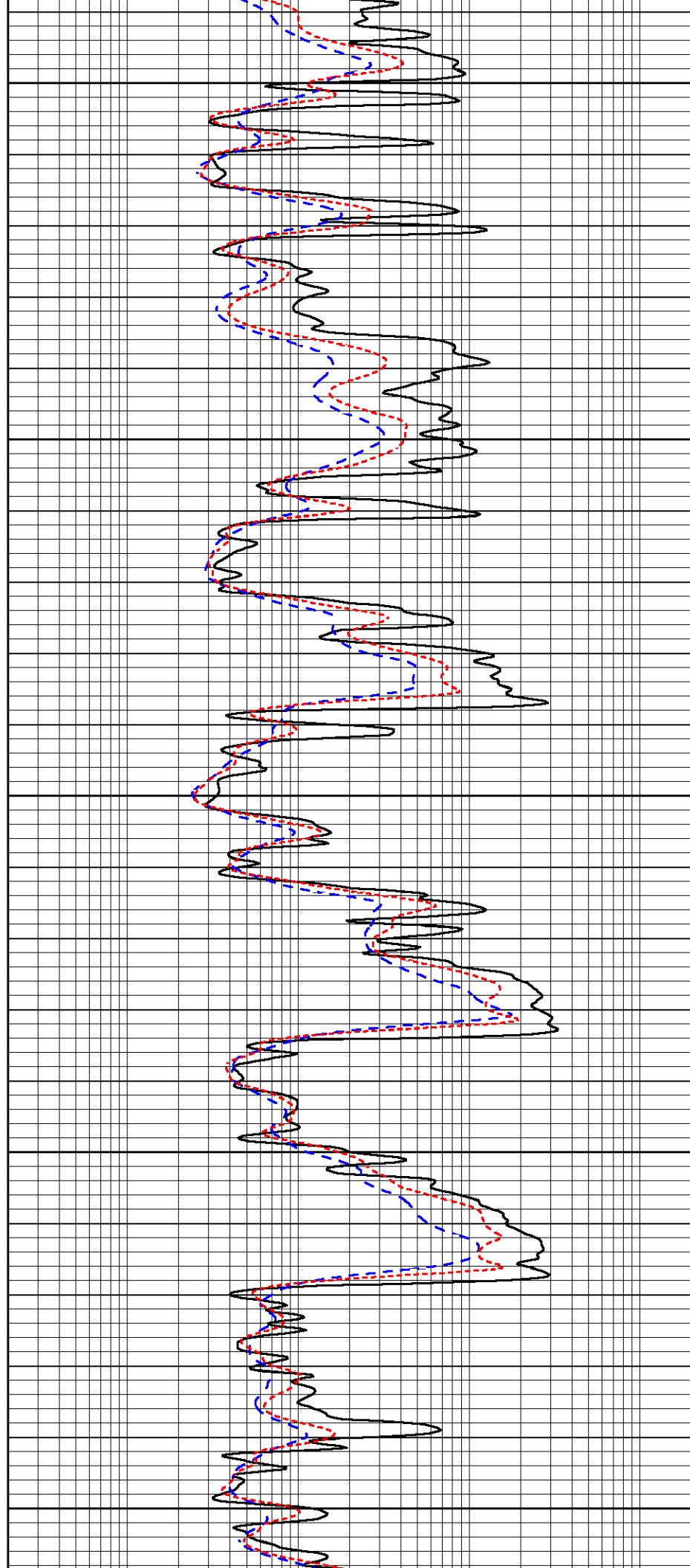
4300

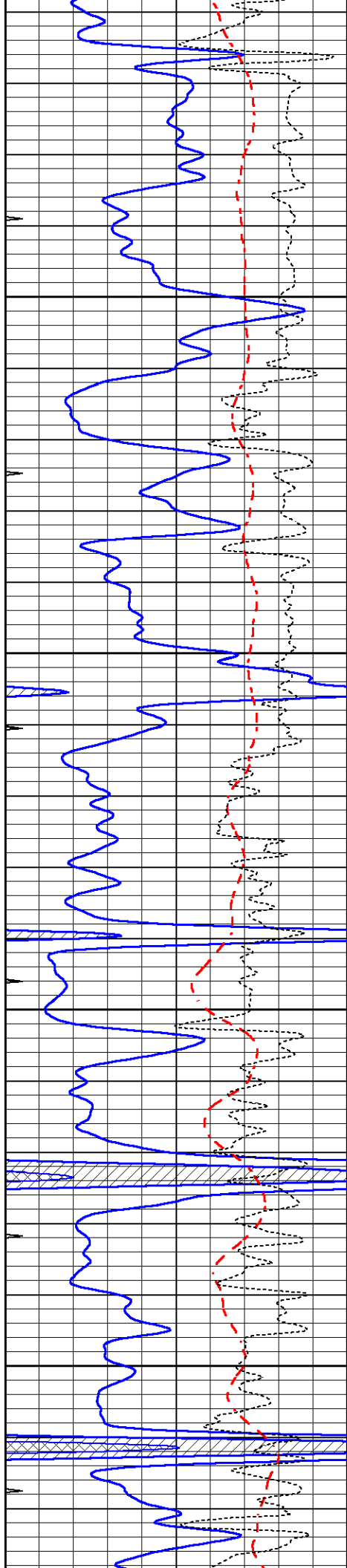
4350

4400

4450

4500



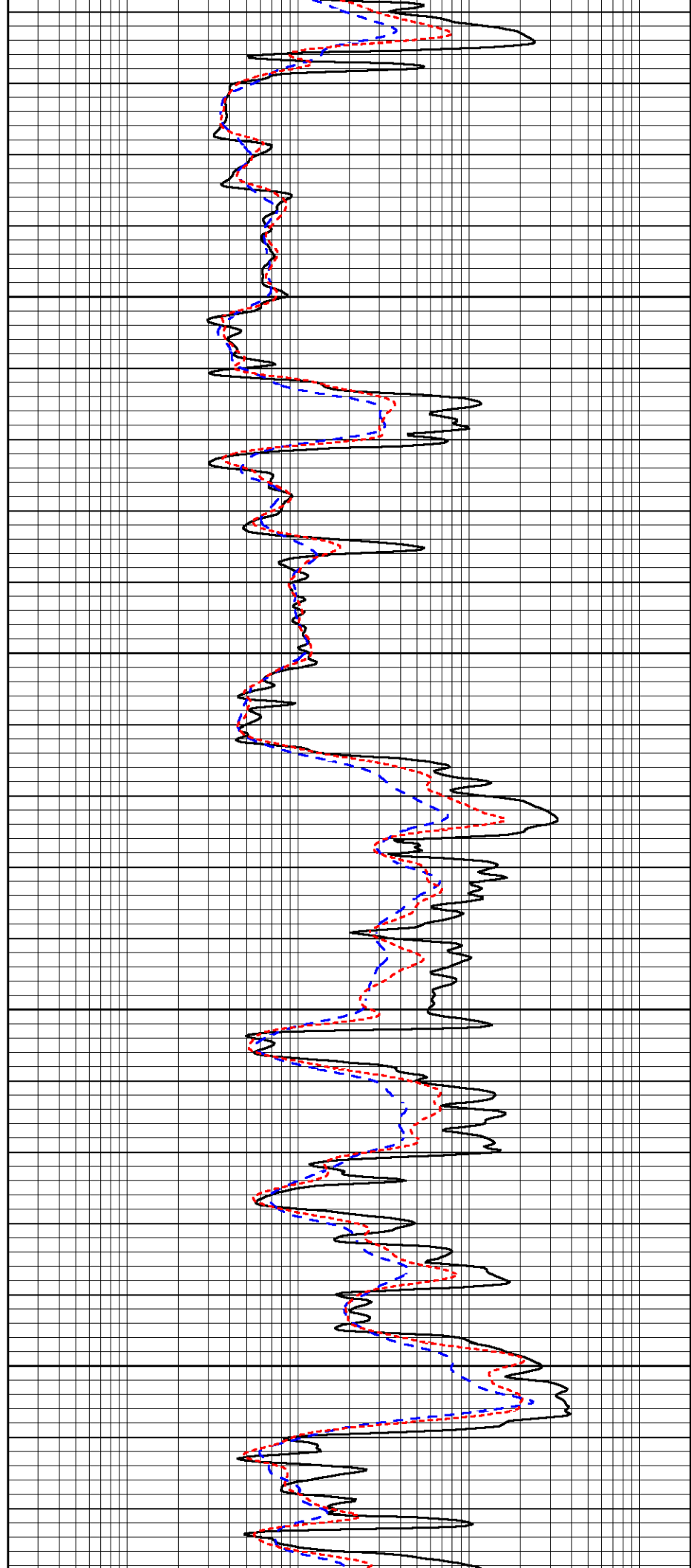


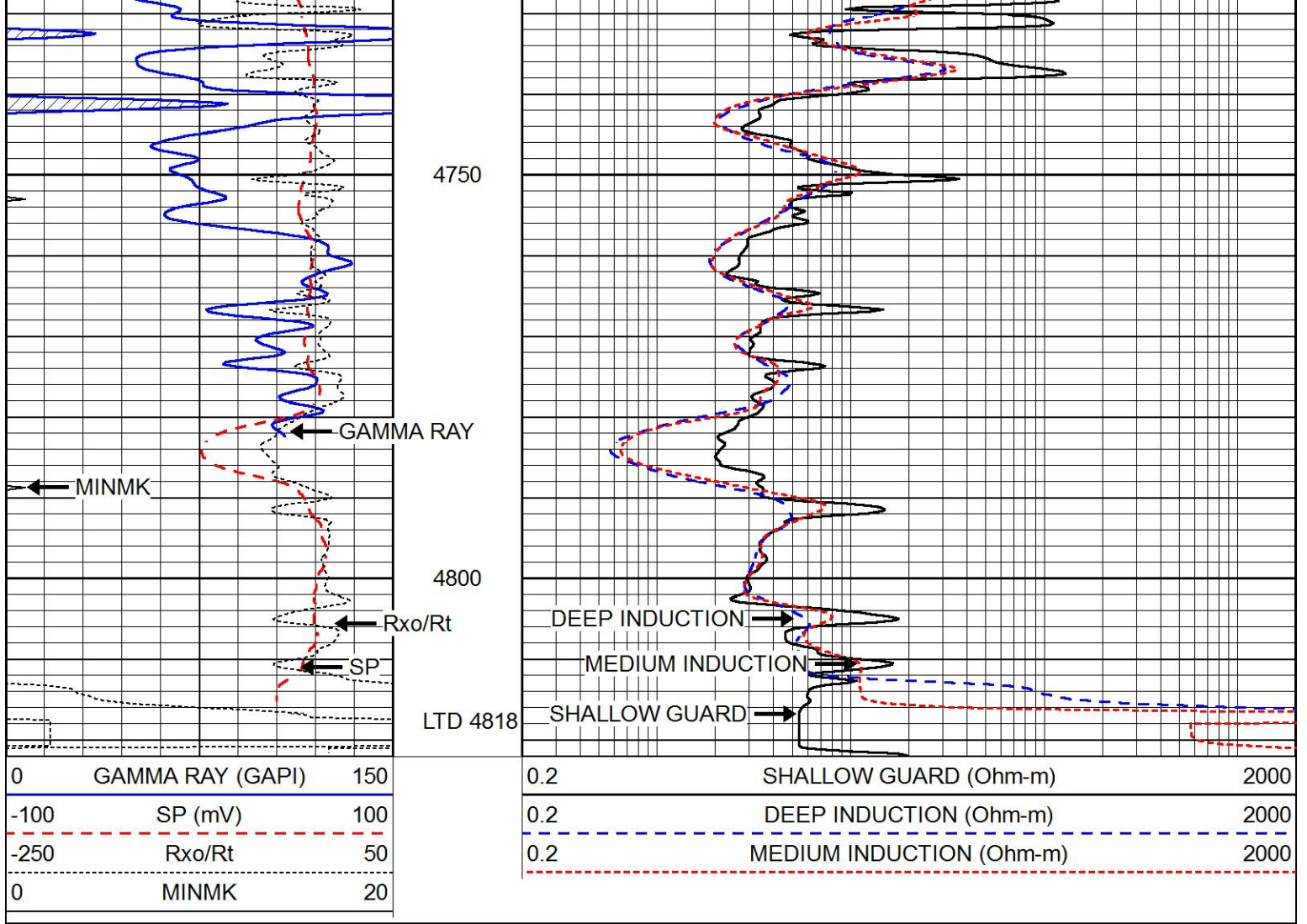
4550

4600

4650

4700



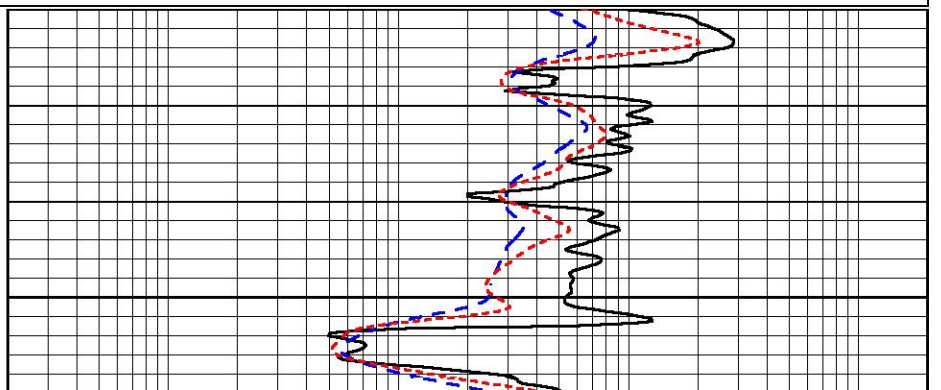
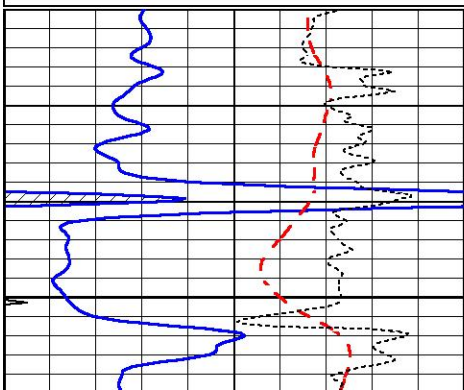


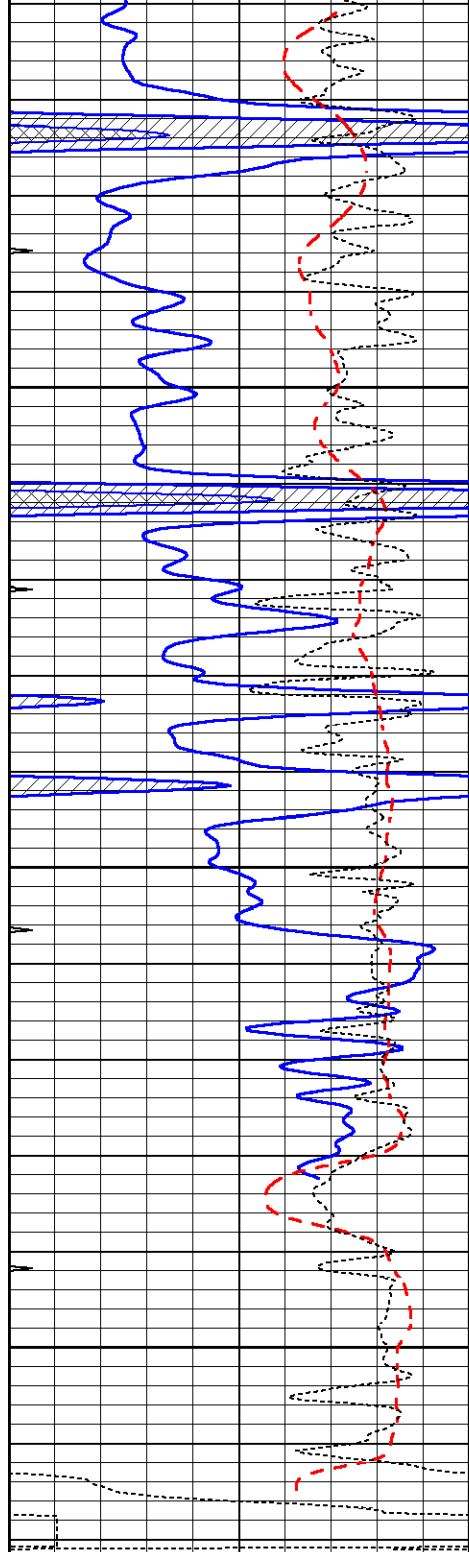
REPEAT SECTION

Database File 5037ddn.db
 Dataset Pathname pass2.1
 Presentation Format _dil
 Dataset Creation Wed Dec 16 14:00:15 2020
 Charted by Depth in Feet scaled 1:240

0	GAMMA RAY (GAPI)	150
-100	SP (mV)	100
-250	Rxo/Rt	50
0	MINMK	20

0.2	SHALLOW GUARD (Ohm-m)	2000
0.2	DEEP INDUCTION (Ohm-m)	2000
0.2	MEDIUM INDUCTION (Ohm-m)	2000



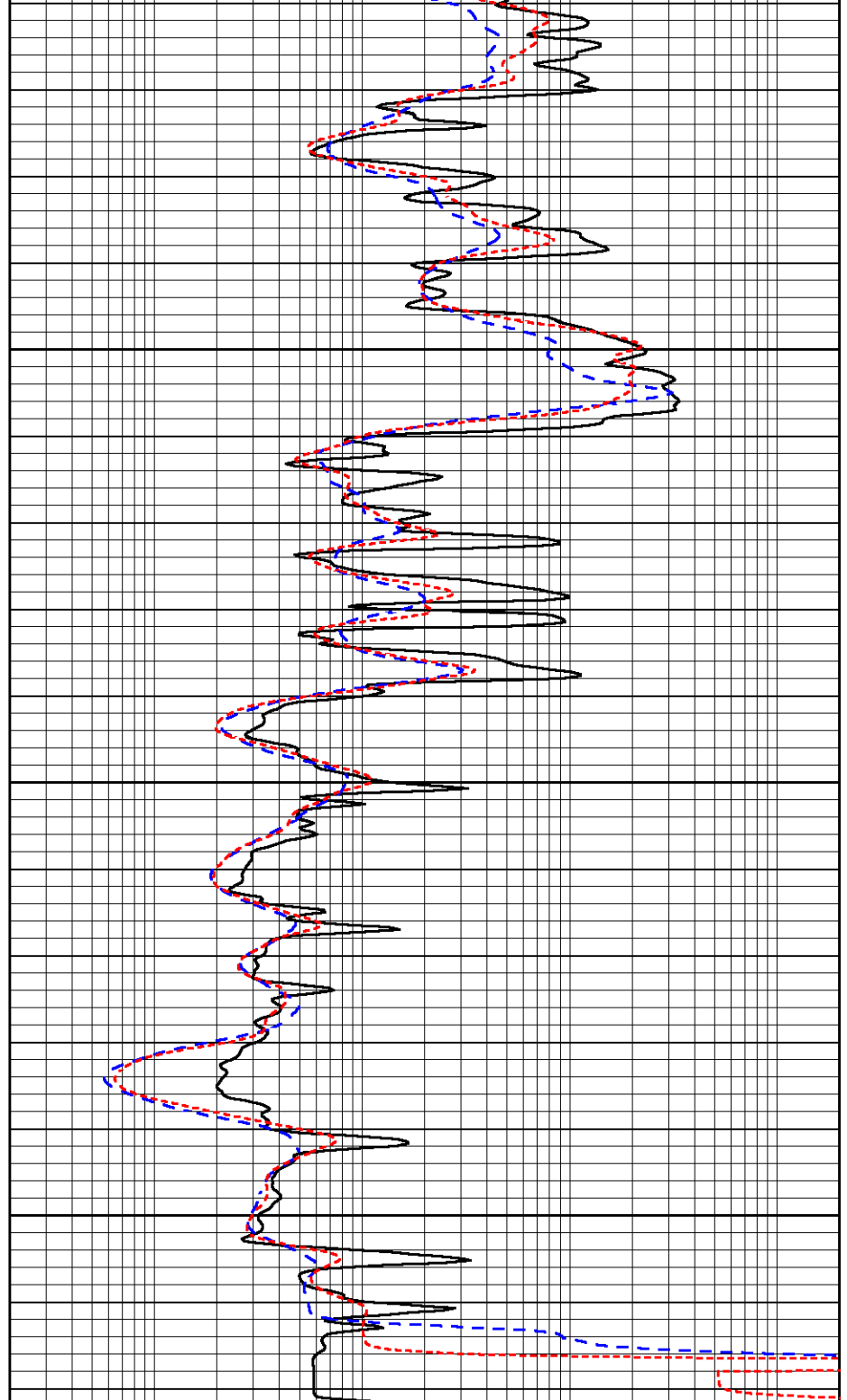


4700

4750

4800

0	GAMMA RAY (GAPI)	150
-100	SP (mV)	100
-250	Rxo/Rt	50
0	MINMK	20



0.2	SHALLOW GUARD (Ohm-m)	2000
0.2	DEEP INDUCTION (Ohm-m)	2000
0.2	MEDIUM INDUCTION (Ohm-m)	2000

Calibration Report

Database File 5037ddn.db
 Dataset Pathname pass2.1
 Dataset Creation Wed Dec 16 14:00:15 2020

Dual Induction Calibration Report

Serial-Model: PROBE8-DILG
 Surface Cal Performed: Mon Sep 10 14:28:35 2018

Surface Calibration								
Loop:	Readings			References			Results	
	Air	Loop		Air	Loop		m	b
Deep	0.015	0.648	V	0.000	400.000	mmho/m	620.000	0.000
Medium	0.029	0.796	V	0.000	464.000	mmho/m	590.000	-12.000
Internal:	Zero	Cal		Zero	Cal		m	b
Deep	0.017	0.657	V	0.000	400.000	mmho/m	625.153	-10.619
Medium	0.016	0.757	V	0.000	464.000	mmho/m	625.992	-9.739

Downhole Calibration								
	Readings			References			Results	
	Zero	Cal		Zero	Cal		m'	b'
Deep	0.000	0.000	mmho/m	2.011	405.777	mmho/m	1.000	0.000
Medium	0.000	0.000	mmho/m	7.590	503.393	mmho/m	1.000	0.000
LL3		7.500	V		1500.000	Ohm-m		
		0.000	V		20.000	Ohm-m		
		-7.200	V		3800.000	mmho-m		

After Survey Verification								
	Readings			Targets			Results	
	Zero	Cal		Zero	Cal		m'	b'
Deep	0.000	0.000	mmho/m	0.000	0.000	mmho/m	0.000	0.000
Medium	0.000	0.000	mmho/m	0.000	0.000	mmho/m	0.000	0.000
LL3		1.000	Ohm-m		1.000	Ohm-m		
		0.000	Ohm-m		0.000	Ohm-m		
		1.000	mmho-m		1.000	mmho-m		

Litho Density Calibration Report
Serial: 001N Model: PRB

Master Calibration					Performed Thu Mar 19 11:30:16 2020			
	Background	Magnesium	Aluminum	Aluminum+Fe				
Window 1	1572.2	7510.8	2837.3	2643.1				cps
Window 2	1446.2	6523.9	2552.8	2409.9				cps
Window 3	1060.9	3611.4	1731.5	1684.8				cps
Window 4	145.5	363.4	363.2	368.1				cps
Long Space	0.0	5077.7	1106.6	963.7				cps
Short Space	3.1	1709.3	1103.4	916.9				cps
Rho		1.7100	2.5900	0.0000				g/cc
Pe		2.0000	2.7500	5.7900				
Rib Angle	: 44.0	Rib Slope	: 0.965	Density/Spine Ratio			: 0.555	
Spine Angle	: 74.0	Spine Slope	: 3.481	Spine Intercept			: -17.4	

Before Survey Verification					Performed Wed Dec 31 18:00:00 1969			
	Background	Magnesium	Aluminum	Aluminum+Fe				
Window 1	0.0	0.0	0.0	0.0				cps
Window 2	0.0	0.0	0.0	0.0				cps
Window 3	0.0	0.0	0.0	0.0				cps
Window 4	0.0	0.0	0.0	0.0				cps
Long Space	0.0	0.0	0.0	0.0				cps
Short Space	0.0	0.0	0.0	0.0				cps
Measured Rho		0.0000	0.0000	0.0000				g/cc

Measured Correction	0.0000	0.0000	0.0000	g/cc
Measured Pe		0.0000	0.0000	

After Survey Verification

Performed Wed Dec 31 18:00:00 1969

Window 1	0.0	0.0	0.0	0.0	cps
Window 2	0.0	0.0	0.0	0.0	cps
Window 3	0.0	0.0	0.0	0.0	cps
Window 4	0.0	0.0	0.0	0.0	cps
Long Space	0.0	0.0	0.0	0.0	cps
Short Space	0.0	0.0	0.0	0.0	cps
Measured Rho		0.0000	0.0000	0.0000	g/cc
Measured Correction		0.0000	0.0000	0.0000	g/cc
Measured Pe			0.0000	0.0000	

Compensated Neutron Calibration Report

Serial Number: 6I
Tool Model: G

CALIBRATION

Detector	Readings	Target	Normalization
Short Space	1.00 cps	1.00 cps	1.0000
Long Space	1.00 cps	1.00 cps	1.0000

PRE-SURVEY VERIFICATION

Detector	Readings	Measured	Target
1) Short Space	cps		
Long Space	cps	pu	pu
2) Short Space	cps		
Long Space	cps	pu	
3) Short Space	cps		
Long Space	cps	pu	

POST-SURVEY VERIFICATION

Detector	Readings	Measured	Target
1) Short Space	cps		
Long Space	cps	pu	pu
2) Short Space	cps		
Long Space	cps	pu	pu
3) Short Space	cps		
Long Space	cps	pu	pu

Gamma Ray Calibration Report

Serial Number: GR6
Tool Model: OPEN
Performed: Thu Jul 30 20:04:35 2020

Calibrator Value: 150.0 GAPI

Background Reading: 0.0 cps
Calibrator Reading: 276.0 cps

Sensitivity:

0.7500

GAPI/cps