



**COMPENSATED
DENSITY/NEUTRON
PE LOG**

Company ABERCROMBIE ENERGY, LLC.

Well GARY #1-33

Field

County LANE

State KANSAS

Location: 2290' FNL & 200' FWL

SEC 33 TWP 17S RGE 27W

API #: 15-101-22647-0000

Other Services
DIL

Permanent Datum GROUND LEVEL Elevation 2700

Log Measured From KELLY BUSHING 5' A.G.L

Drilling Measured From KELLY BUSHING

Elevation
K.B. 2705
D.F. 2703
G.L. 2700

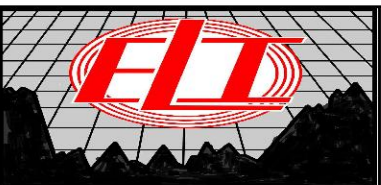
Date	3/12/21		
Run Number	ONE		
Depth Driller	4656		
Depth Logger	4658		
Bottom Logged Interval	4634		
Top Log Interval	3700		
Casing Driller	8 5/8" @ 357		
Casing Logger	357		
Bit Size	7 7/8		
Type Fluid in Hole	CHEMICAL MUD	CHLORIDES 3000 PPM	
Density / Viscosity	9.3/51		
pH / Fluid Loss	11.0/7.2		
Source of Sample	FLOWLINE		
Rm @ Meas. Temp	.95 @ 60F		
Rmf @ Meas. Temp	.71 @ 60F		
Rmc @ Meas. Temp	1.14 @ 60F		
Source of Rmf / Rmc	MEASUREMENT		
Rm @ BHT	.46 @ 122F		
Time Circulation Stopped	2 HOURS		
Time Logger on Bottom	////		
Maximum Recorded Temperature	122F		
Equipment Number	3802		
Location	HAYS, KANSAS		
Recorded By	JASON CAPPELLUCCI		
Witnessed By	DAVE GOLDAK		

<<< Fold Here >>>

All interpretations are opinions based on inferences from electrical or other measurements and we cannot and do not guarantee the accuracy or correctness of any interpretation, and we shall not, except in the case of gross or willful negligence on our part, be liable or responsible for any loss, costs, damages, or expenses incurred or sustained by anyone resulting from any interpretation made by any of our officers, agents or employees. These interpretations are also subject to our general terms and conditions set out in our current Price Schedule.

Comments

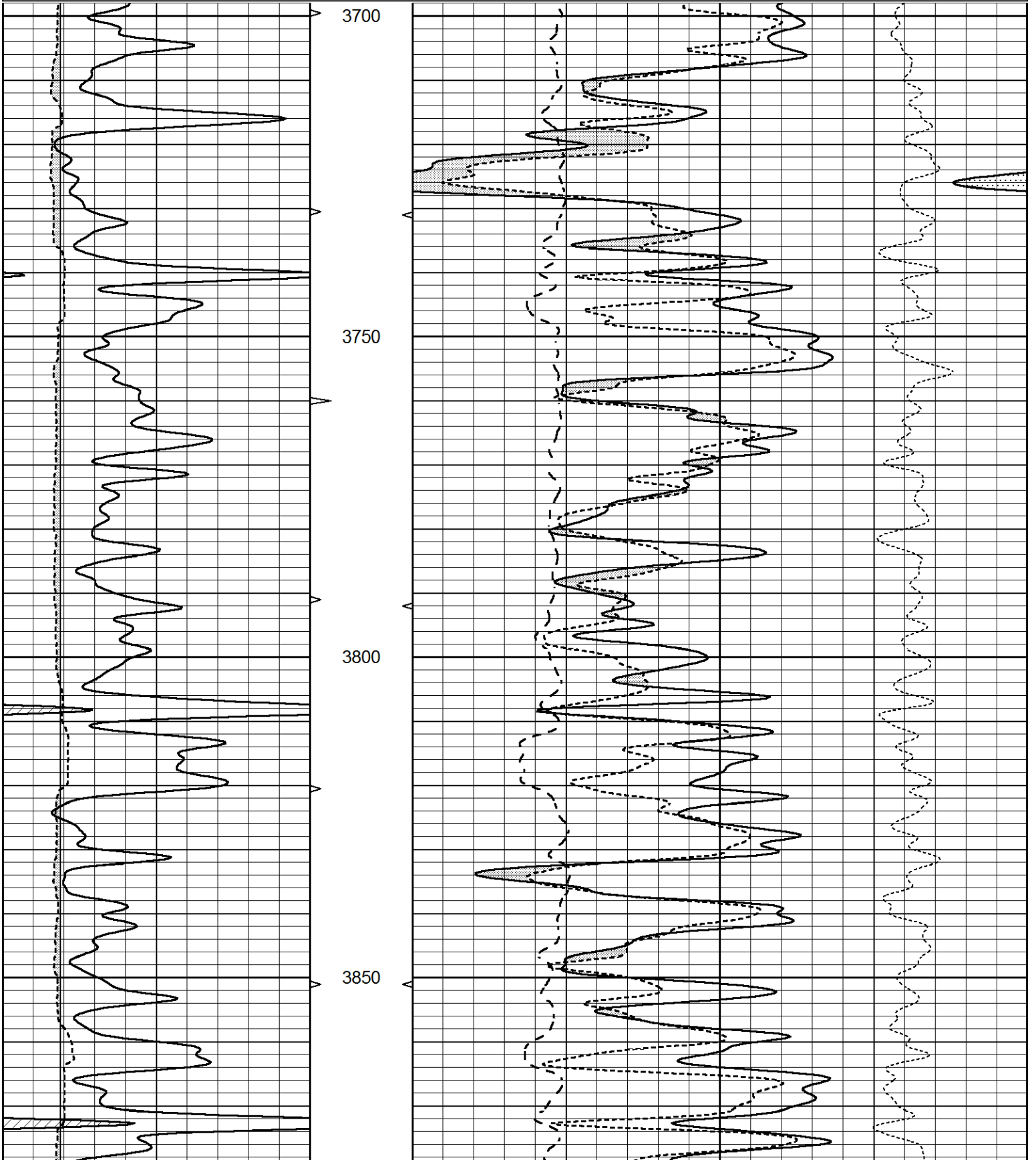
THANK YOU FOR USING ELI WIRELINE SERVICES, HAYS, KS. (785) 628-6395
DIRECTIONS
NESS CITY, KS. - WEST TO TURKEY RED RD. - 3 1/2 NORTH TO CURVE WEST
1 WEST - NORTH & EAST INTO

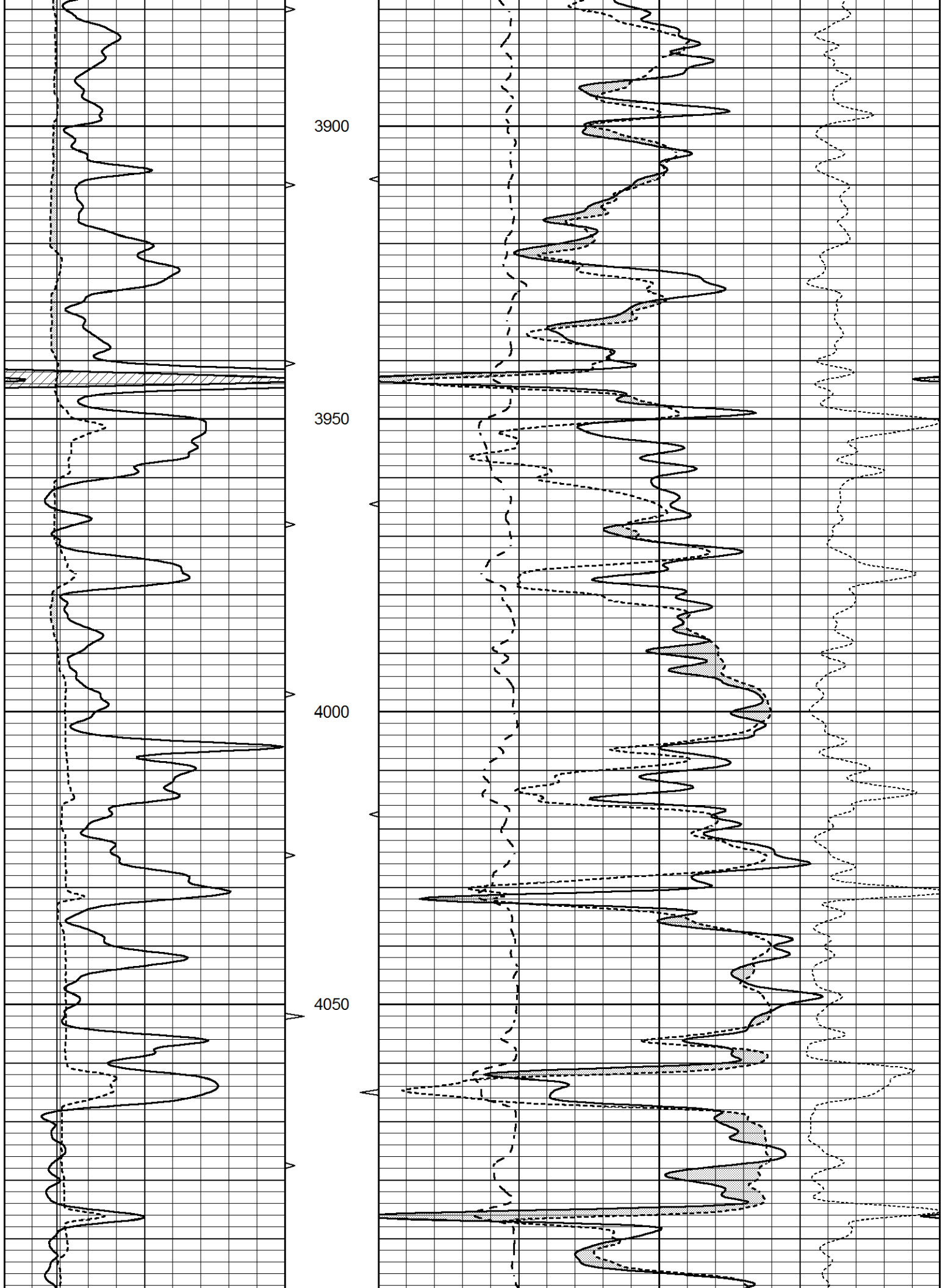


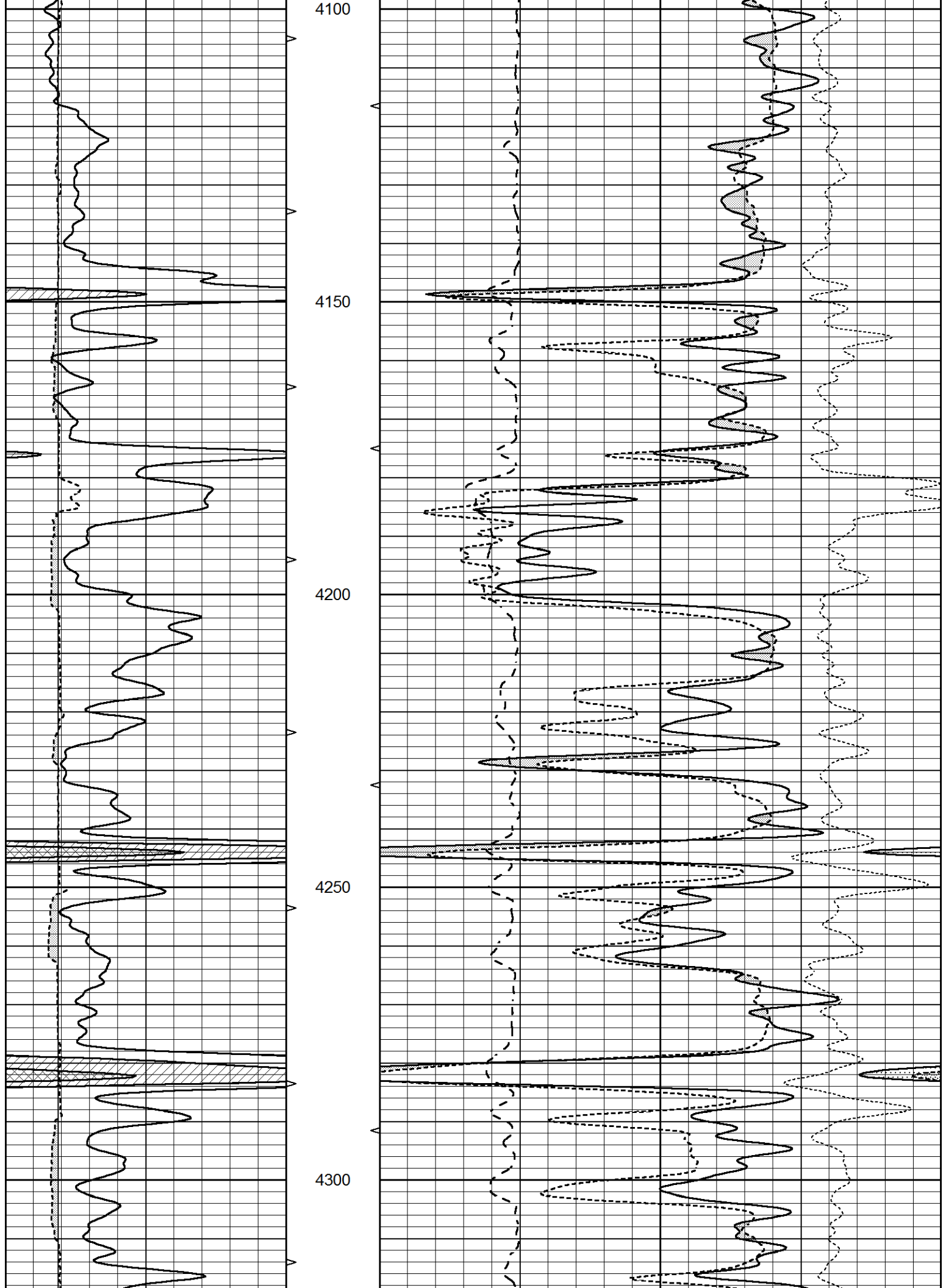
MAIN SECTION

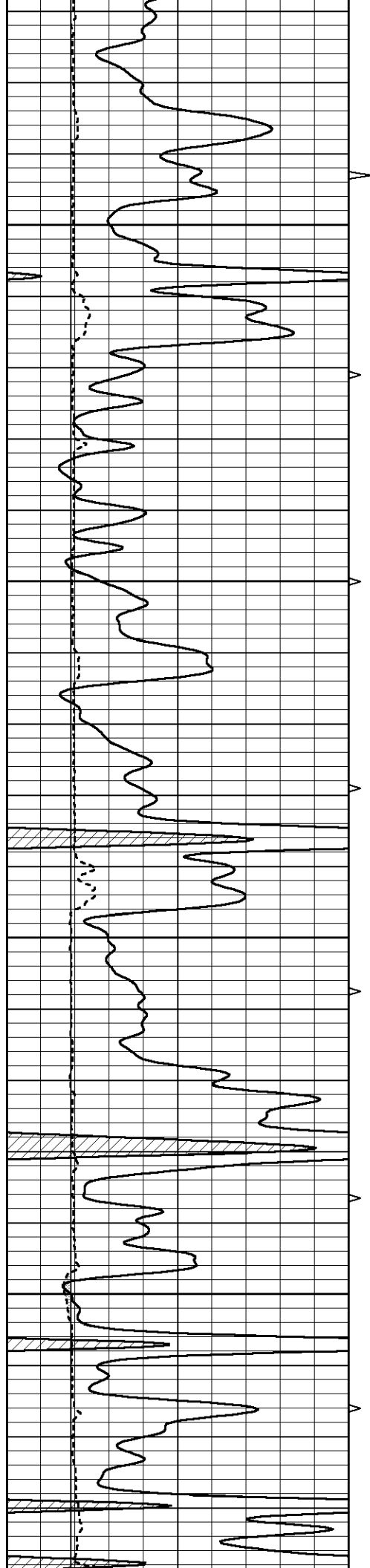
Database File 5211pe.db
 Dataset Pathname pass3.1
 Presentation Format _ldt_neu
 Dataset Creation Fri Mar 12 22:19:43 2021
 Charted by Depth in Feet scaled 1:240

0	GAMMA RAY (GAPI)	150	ABHV	30	COMPENSATED DENSITY (pu)			-10	
6	CALIPER (in)	16	10 (ft3)	0	30	COMPENSATED NEUTRON (pu)			-10
				0	PE	10	-0.25	CORRECTION (g/cc)	0.25
				0 (ft3)	10				







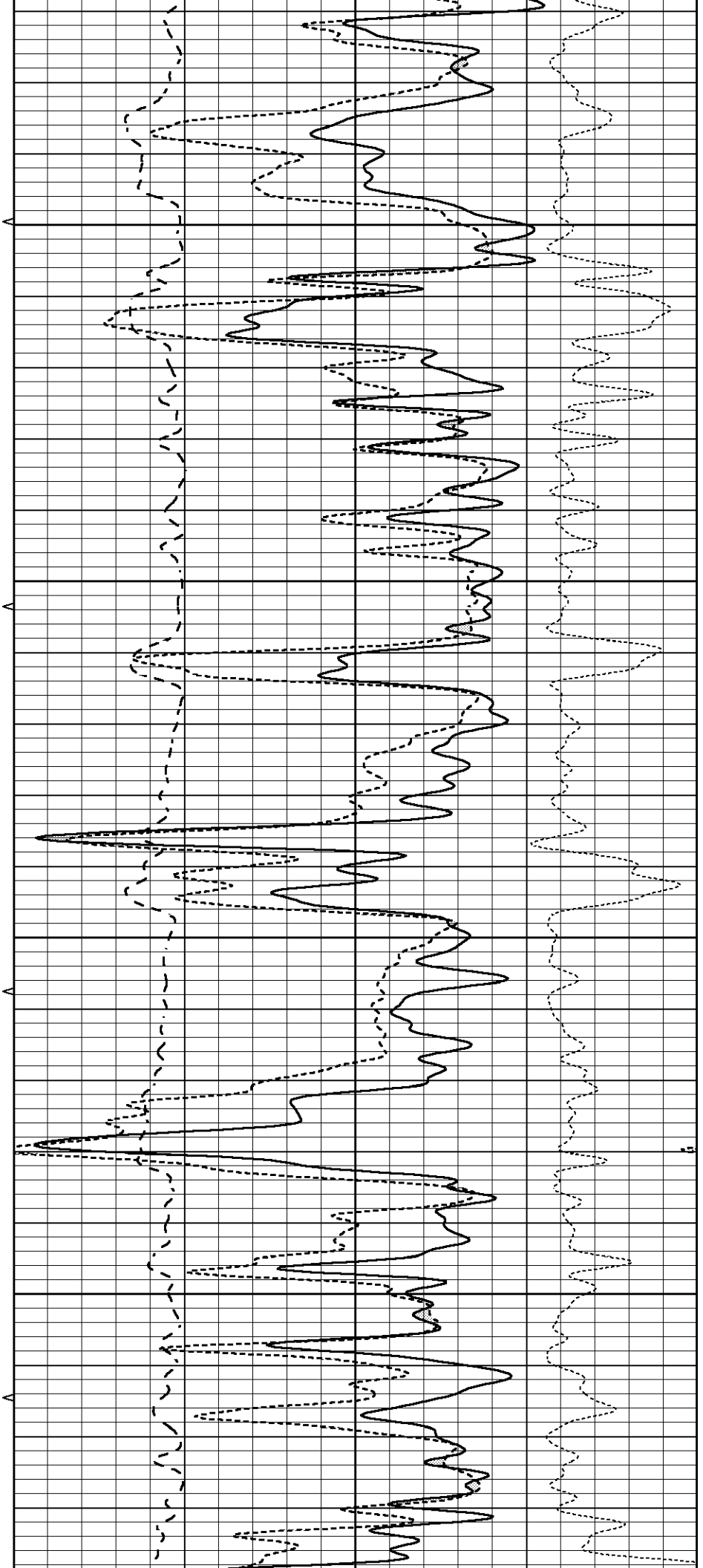


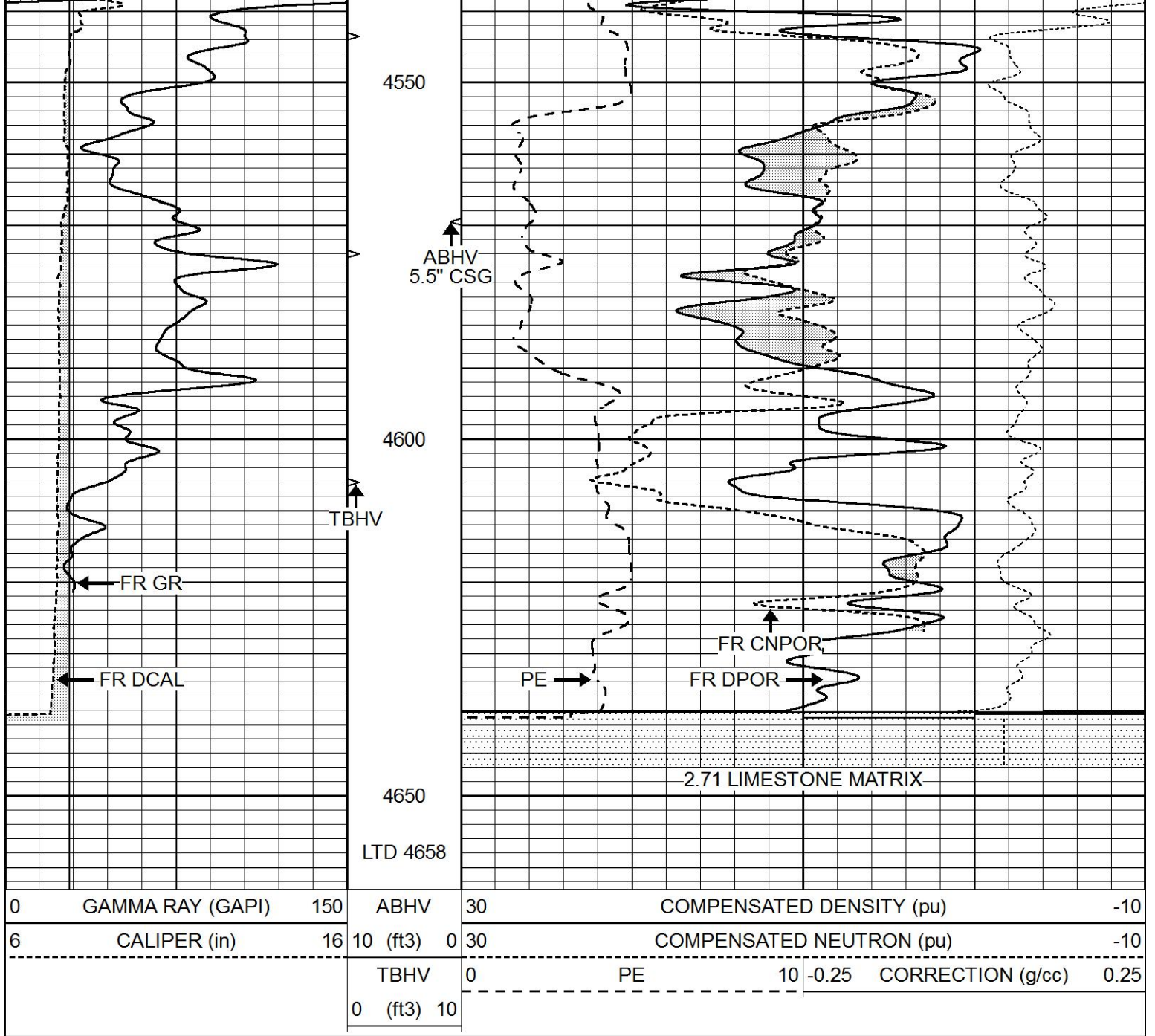
4350

4400

4450

4500

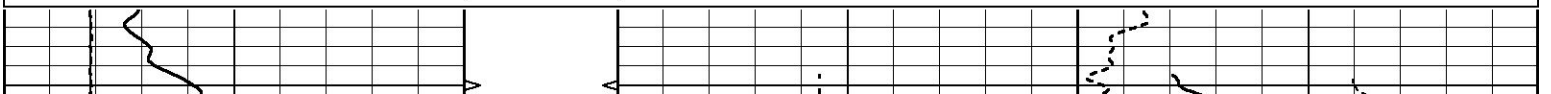




REPEAT SECTION

Database File 5211pe.db
 Dataset Pathname pass2.1
 Presentation Format _ldt_neu
 Dataset Creation Fri Mar 12 22:16:16 2021
 Charted by Depth in Feet scaled 1:240

0	GAMMA RAY (GAPI)	150	ABHV	30	COMPENSATED DENSITY (pu)	-10
6	CALIPER (in)	16	10 (ft3) 0	30	COMPENSATED NEUTRON (pu)	-10
			TBHV	0	PE	10 -0.25 CORRECTION (g/cc) 0.25
			0 (ft3) 10			



Calibration Report

Database File 5211pe.db
 Dataset Pathname pass3.1
 Dataset Creation Fri Mar 12 22:19:43 2021

Dual Induction Calibration Report

Serial-Model: FW1410-55-Probe
 Surface Cal Performed: Tue Feb 19 11:44:18 2019
 Downhole Cal Performed: Tue Feb 19 11:44:24 2019
 After Survey Verification Performed: Tue Feb 19 11:44:27 2019

Surface Calibration

Loop:	Readings			References			Results	
	Air	Loop		Air	Loop		m	b
Deep	0.011	0.656	V	1.000	400.000	mmho/m	618.595	-5.524
Medium	-0.000	0.731	V	1.000	464.000	mmho/m	632.856	1.197
Internal:	Zero	Cal		Zero	Cal		m	b
Deep	0.007	0.649	V	0.000	400.000	mmho/m	623.784	-4.595
Medium	0.004	0.743	V	0.000	464.000	mmho/m	627.284	-2.251

Downhole Calibration

	Readings			References			Results	
	Zero	Cal		Zero	Cal		m'	b'
Deep	-0.824	395.917	mmho/m	-0.976	397.550	mmho/m	1.004	-0.149
Medium	3.565	471.327	mmho/m	3.468	471.590	mmho/m	1.001	-0.099
LL3		7.503	V		1500.000	Ohm-m		
		0.001	V		20.000	Ohm-m		
		-7.481	V		3745.000	mmho-m		

After Survey Verification

	Readings			Targets			Results	
	Zero	Cal		Zero	Cal		m'	b'
Deep	0.000	0.000	mmho/m	-0.824	395.917	mmho/m	1.000	0.000
Medium	0.000	0.000	mmho/m	3.565	471.327	mmho/m	1.000	0.000
LL3		0.000	Ohm-m		1500.000	Ohm-m		
		0.000	Ohm-m		20.000	Ohm-m		
		0.000	mmho-m		3745.000	mmho-m		

Litho Density Calibration Report

Serial: 140703
 Model: V4_10P
 Source Number: 74GBq-19

Master Calibration

Performed: Wed Dec 02 12:04:44 2020

	Background	Aluminum	Magnesium	
Window 1	595.38	5386.50	23898.92	cps
Window 2	52.78	1248.21	5993.75	cps
Window 4	251.36	1200.30	5155.55	cps
Window 5	545.15	9066.30	17240.12	cps
Window 6	43.35	1491.73	2929.24	cps
Window 8	258.76	2917.82	5450.26	cps
Bulk Density	-	2.6020	1.6830	g/cc

Bulk Density: 2.0020 1.0000 g/cc
 Pe: - 3.0000 2.5070 b/e

LS Alpha: : -1.8726 SS Alpha: : -0.7656 LS CPE: : 1.0742
 LS Beta: : 127345.0723 SS Beta: : 20293.3834 SS CPE: : 1.5427

Before Survey Background Counts Verification Performed: Wed Dec 31 18:00:00 1969

Window 1	0.00	cps
Window 2	0.00	cps
Window 4	0.00	cps
Window 5	0.00	cps
Window 6	0.00	cps
Window 8	0.00	cps

After Survey Background Counts Verification Performed: Wed Dec 31 18:00:00 1969

Window 1	0.00	cps
Window 2	0.00	cps
Window 4	0.00	cps
Window 5	0.00	cps
Window 6	0.00	cps
Window 8	0.00	cps

Lithodensity Caliper Calibration Performed: Wed Dec 02 12:04:44 2020

Results Readings		References (in)		Gain	Offset
Low	High	Low	High		
8003.0	11159.9	8.0	14.0	0.0	-7.2

Before Survey Caliper Verification Performed:

	Reference	Reading
Caliper (in)	_____	_____

After Survey Caliper Verification Performed:

	Reference	Reading
Caliper (in)	_____	_____

Compensated Neutron Calibration Report

Serial Number: 080621PMC
 Tool Model: NABORS

PRE-SURVEY VERIFICATION

Detector	Readings	Measured	Target
Short Space	cps		
Long Space	cps	pu	pu

POST-SURVEY VERIFICATION

Detector	Readings	Measured	Target
Short Space	cps		
Long Space	cps	pu	pu

Gamma Ray Calibration Report

Serial Number:	7	
Tool Model:	Probe1	
Performed:	Tue Jan 19 17:50:08 2021	
Calibrator Value:	1.0	GAPI
Background Reading:	0.0	cps
Calibrator Reading:	1.0	cps
Sensitivity:	0.5300	GAPI/cps