



**COMPENSATED
DENSITY / NEUTRON
LOG**

Company ANCHOR BAY PETROLEUM, LLC.
Well D & S FARMS #1
Field WILDCAT
County ELLIS
State KANSAS

Company ANCHOR BAY PETROLEUM, LLC.
Well D & S FARMS #1
Field WILDCAT
County ELLIS State KANSAS

Location: API #: 15-051-26995-0000
3680' FSL & 4581' FEL
NW - NE - SW - NW
SEC 11 TWP 11S RGE 17W
Permanent Datum GROUND LEVEL Elevation 1852
Log Measured From KELLY BUSHING 5' A.G.L.
Drilling Measured From KELLY BUSHING
Other Services
DILMEL
SONIC
Elevation
K.B. 1857
D.F. 1855
G.L. 1852

Date	3/22/21
Run Number	ONE
Depth Driller	3580
Depth Logger	3582
Bottom Logged Interval	3558
Top Log Interval	2700
Casing Driller	8 5/8"@211'
Casing Logger	211
Bit Size	7 7/8"
Type Fluid in Hole	CHEMICAL MUD
Density / Viscosity	9.1/60
pH / Fluid Loss	10.0/10.0
Source of Sample	FLOWLINE
Rm @ Meas. Temp	.500@79F
Rmf @ Meas. Temp	.375@79F
Rmc @ Meas. Temp	.600@79F
Source of Rmf / Rmc	MEASUREMENT
Rm @ BHT	.353@112F
Time Circulation Stopped	2 HOURS
Time Logger on Bottom	7:00 P.M.
Maximum Recorded Temperature	112F
Equipment Number	922339
Location	HAYS, KANSAS
Recorded By	JEFF LUEBBERS
Witnessed By	ED GLASSMAN

<<< Fold Here >>>

All interpretations are opinions based on inferences from electrical or other measurements and we cannot and do not guarantee the accuracy or correctness of any interpretation, and we shall not, except in the case of gross or willful negligence on our part, be liable or responsible for any loss, costs, damages, or expenses incurred or sustained by anyone resulting from any interpretation made by any of our officers, agents or employees. These interpretations are also subject to our general terms and conditions set out in our current Price Schedule.

15-051-26995-0000 Comments

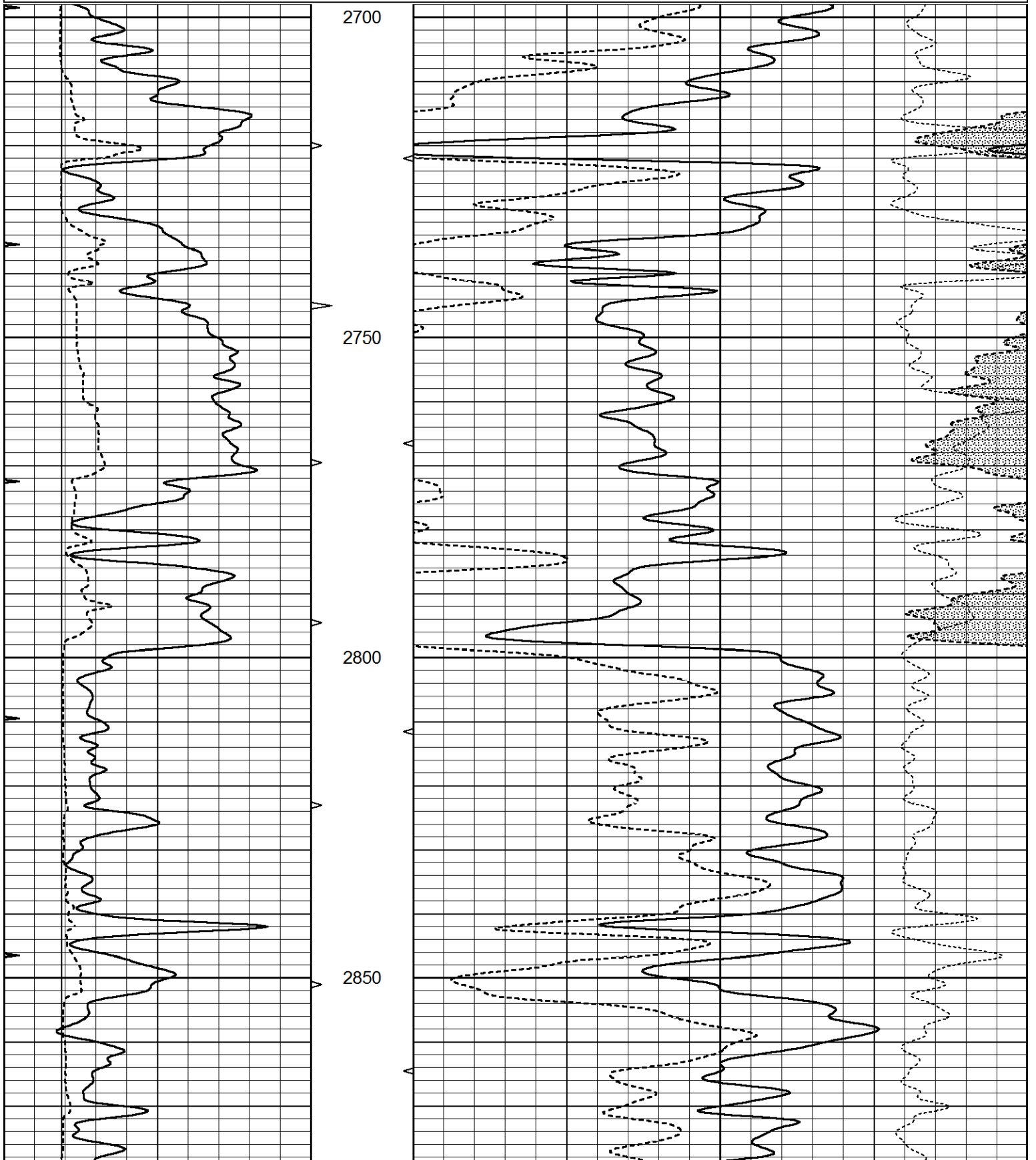
THANK YOU FOR USING ELI WIRELINE HAYS, KANSAS (785) 628-6395
DIRECTIONS
CODELL & SALINE RIVER RD., 1/2N., E. INTO

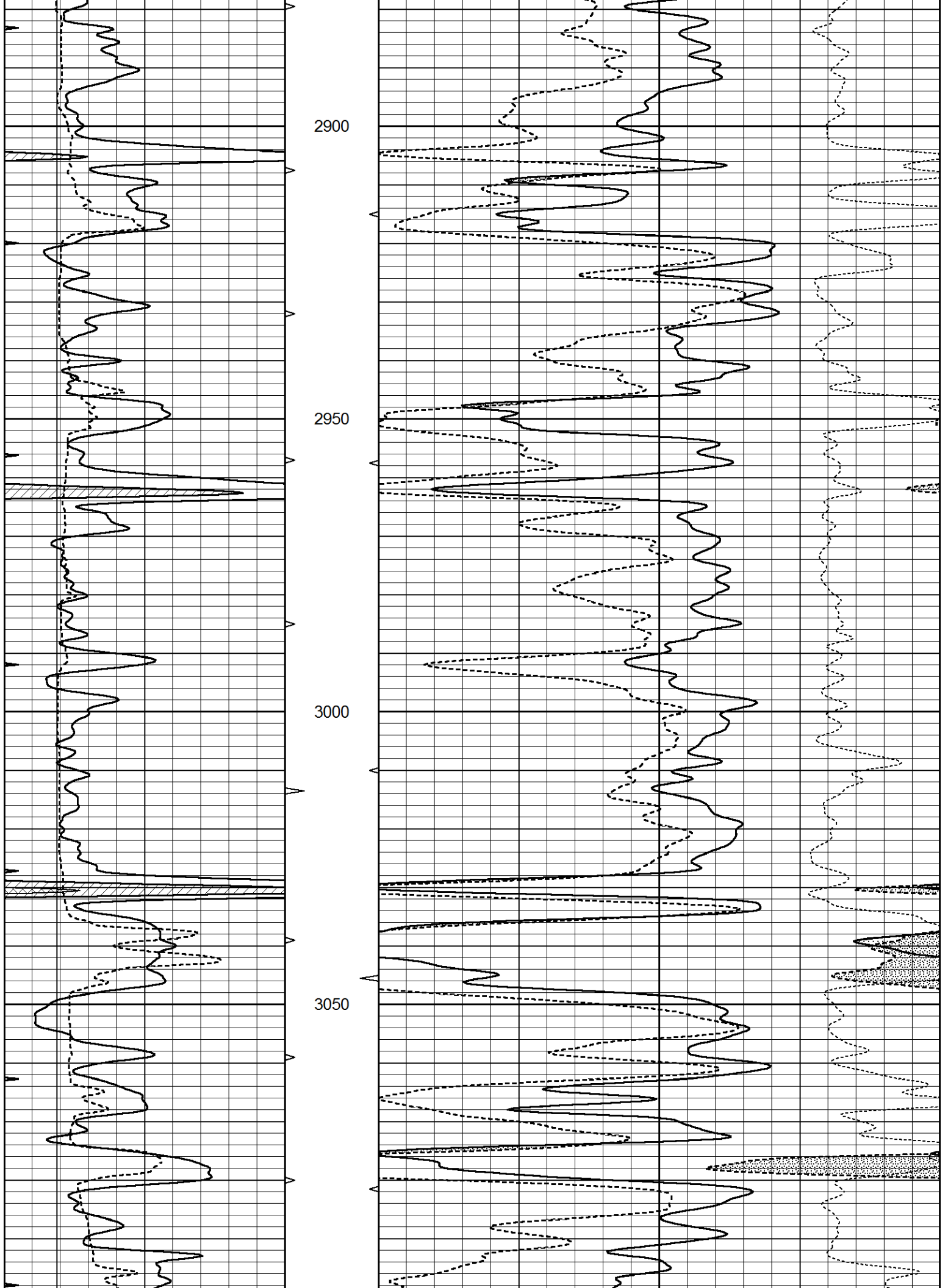


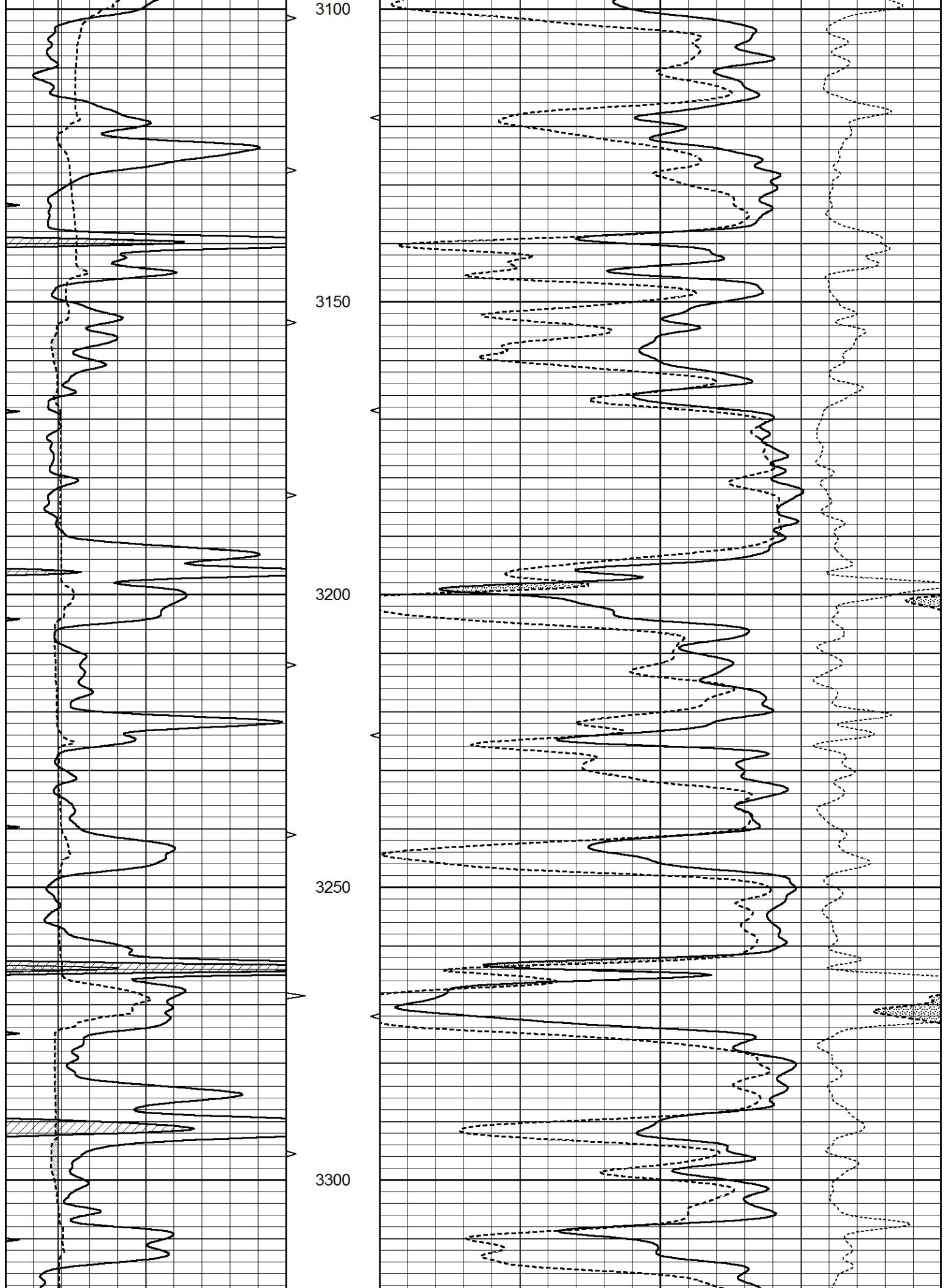
MAIN SECTION

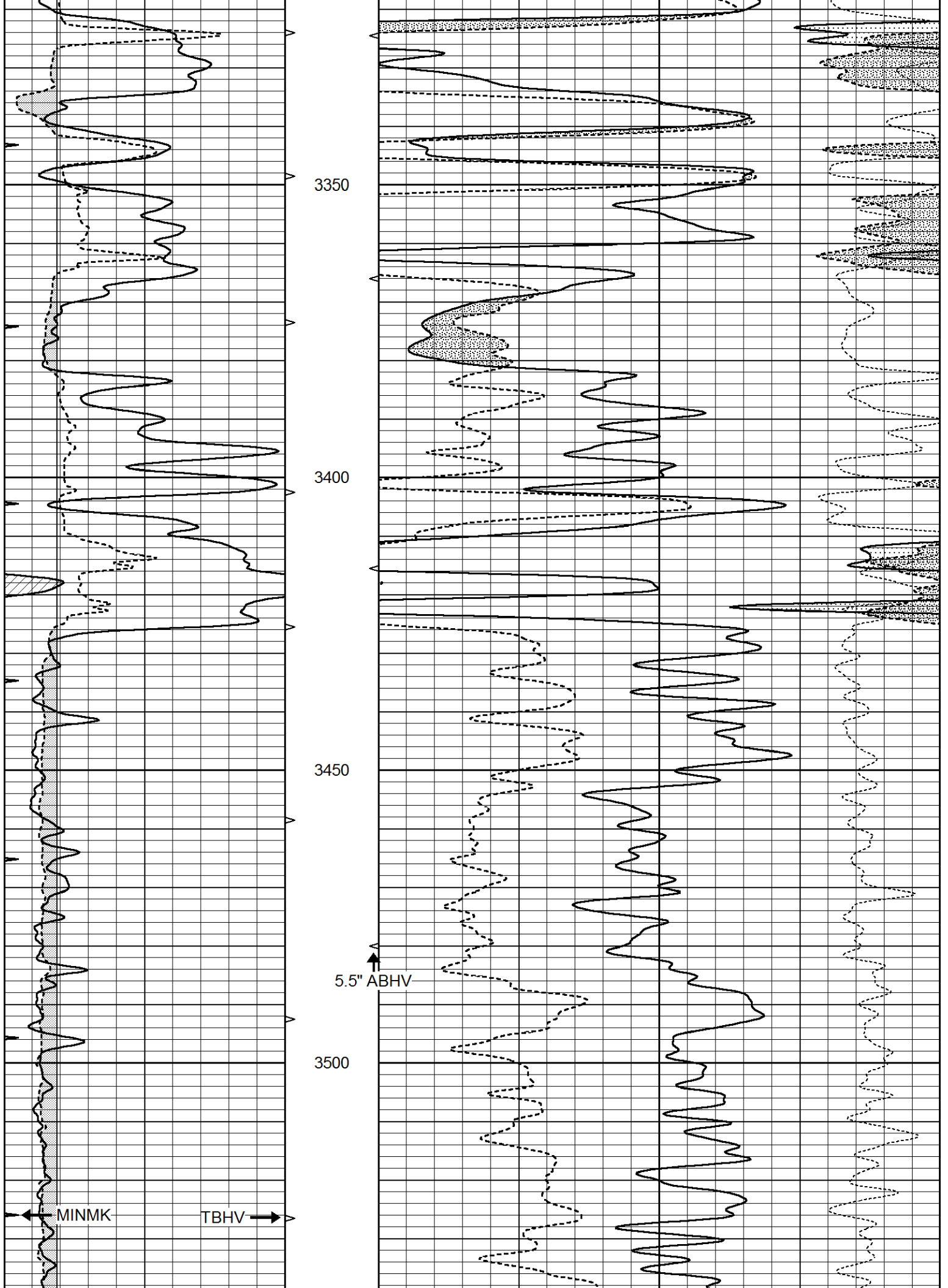
Database File 5263ddn.db
 Dataset Pathname pass3.1M
 Presentation Format den_neu
 Dataset Creation Mon Mar 22 20:13:42 2021
 Charted by Depth in Feet scaled 1:240

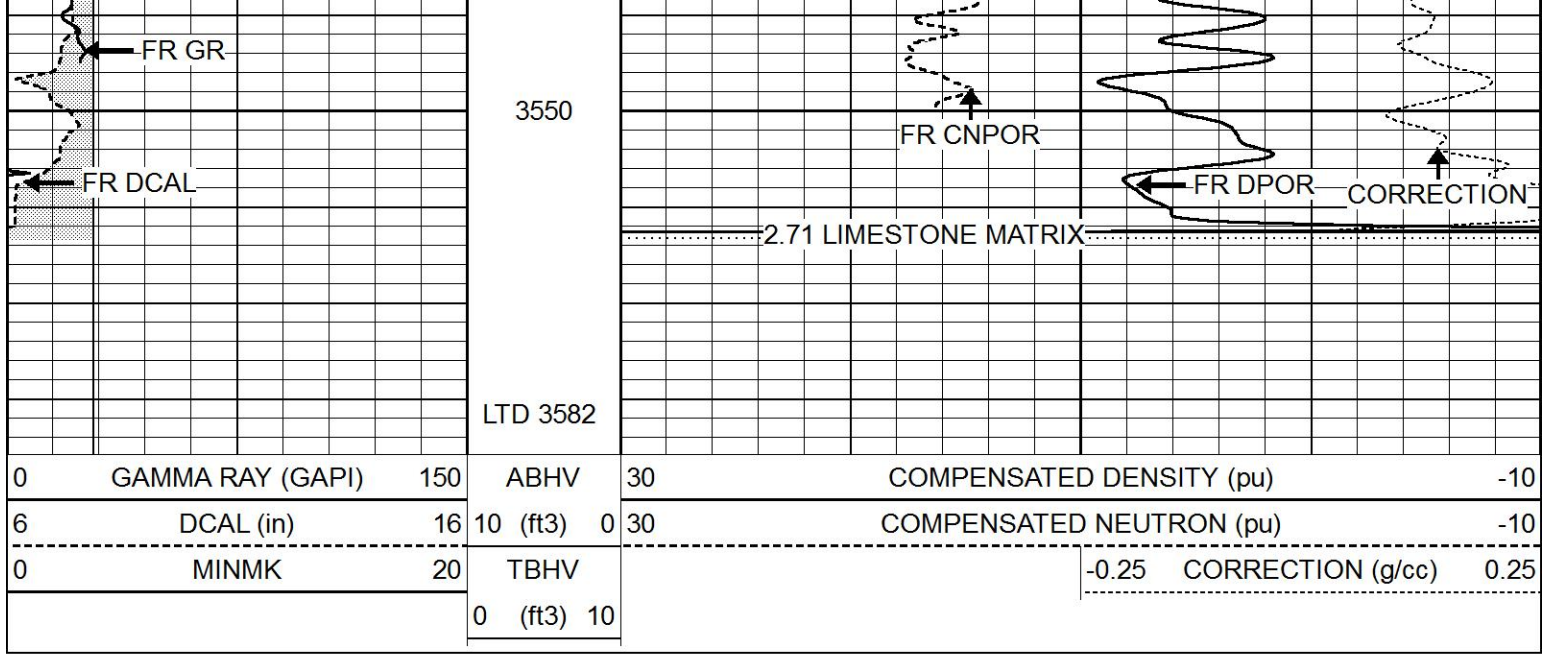
0	GAMMA RAY (GAPI)	150	ABHV	30	COMPENSATED DENSITY (pu)	-10		
6	DCAL (in)	16	10 (ft3)	0	30	COMPENSATED NEUTRON (pu)	-10	
0	MINMK	20	TBHV			-0.25	CORRECTION (g/cc)	0.25
			0 (ft3)	10				







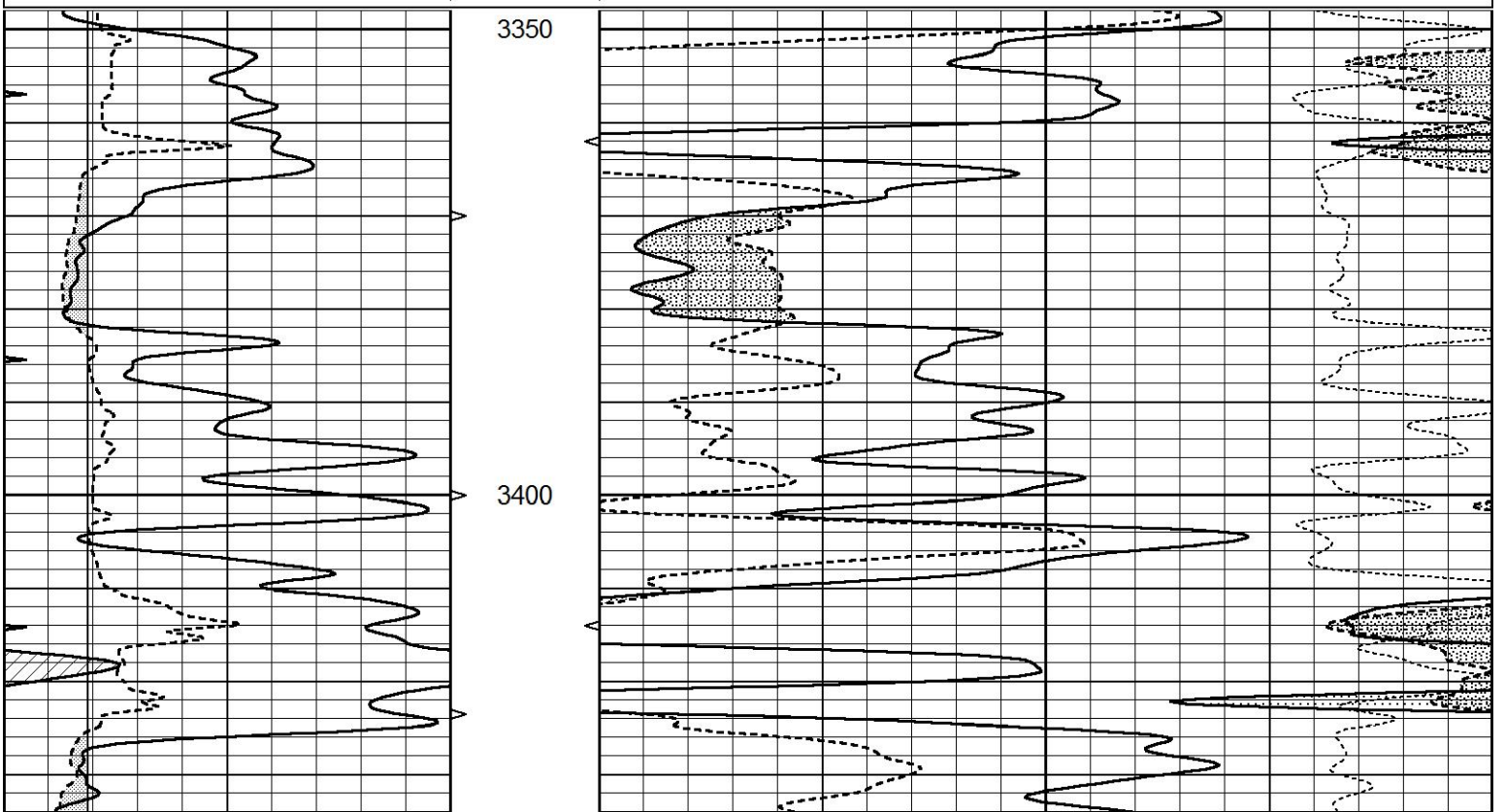


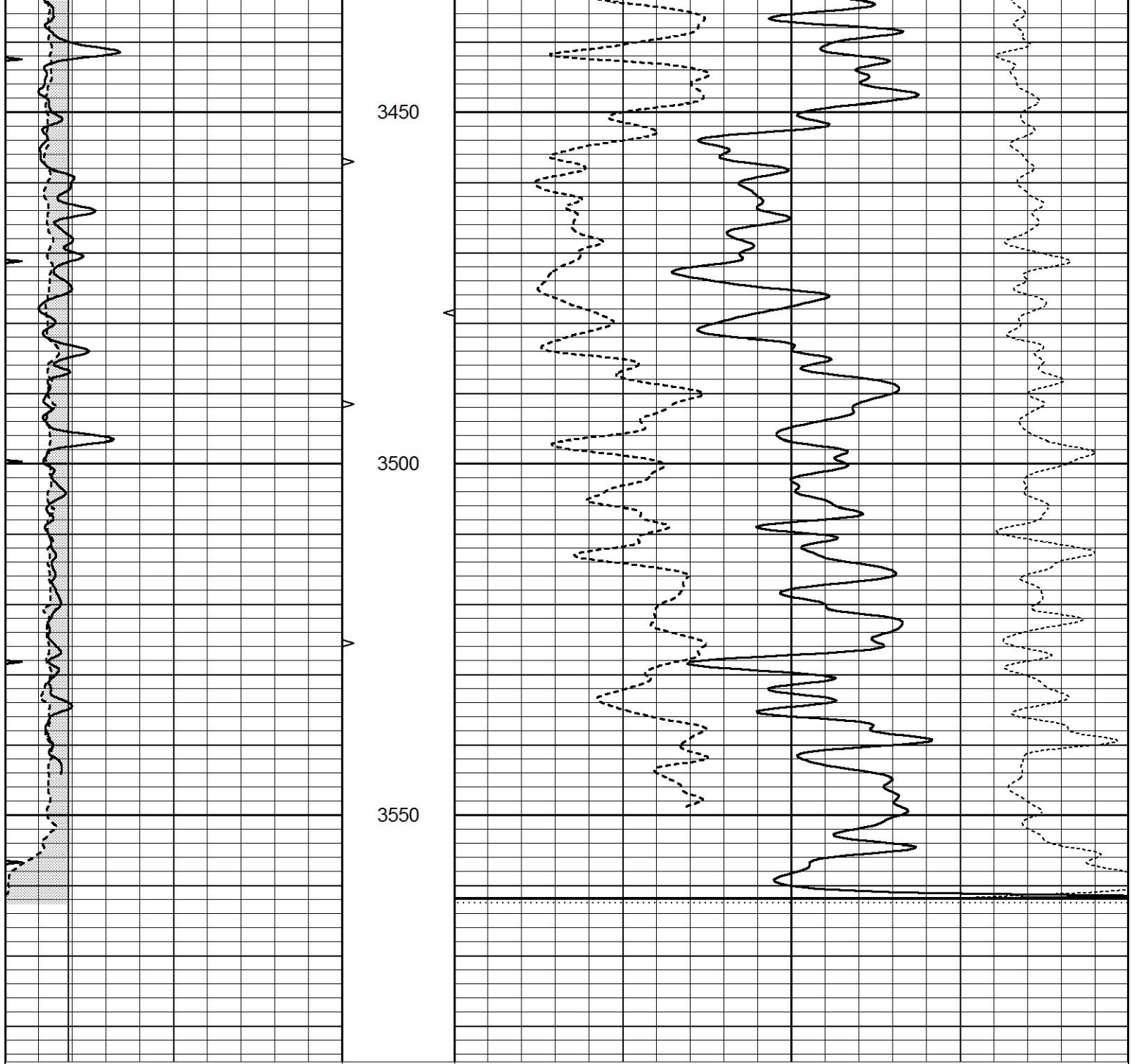


REPEAT SECTION

Database File 5263ddn.db
 Dataset Pathname pass2.1R
 Presentation Format den_neu
 Dataset Creation Mon Mar 22 19:56:10 2021
 Charted by Depth in Feet scaled 1:240

0	GAMMA RAY (GAPI)	150	ABHV	30	COMPENSATED DENSITY (pu)	-10	
6	DCAL (in)	16	10 (ft3)	0 30	COMPENSATED NEUTRON (pu)	-10	
0	MINMK	20	TBHV		-0.25	CORRECTION (g/cc)	0.25
			0 (ft3)	10			





0	GAMMA RAY (GAPI)	150	ABHV	30	COMPENSATED DENSITY (pu)	-10
6	DCAL (in)	16	10 (ft3)	0 30	COMPENSATED NEUTRON (pu)	-10
0	MINMK	20	TBHV		-0.25 CORRECTION (g/cc)	0.25
			0 (ft3)	10		

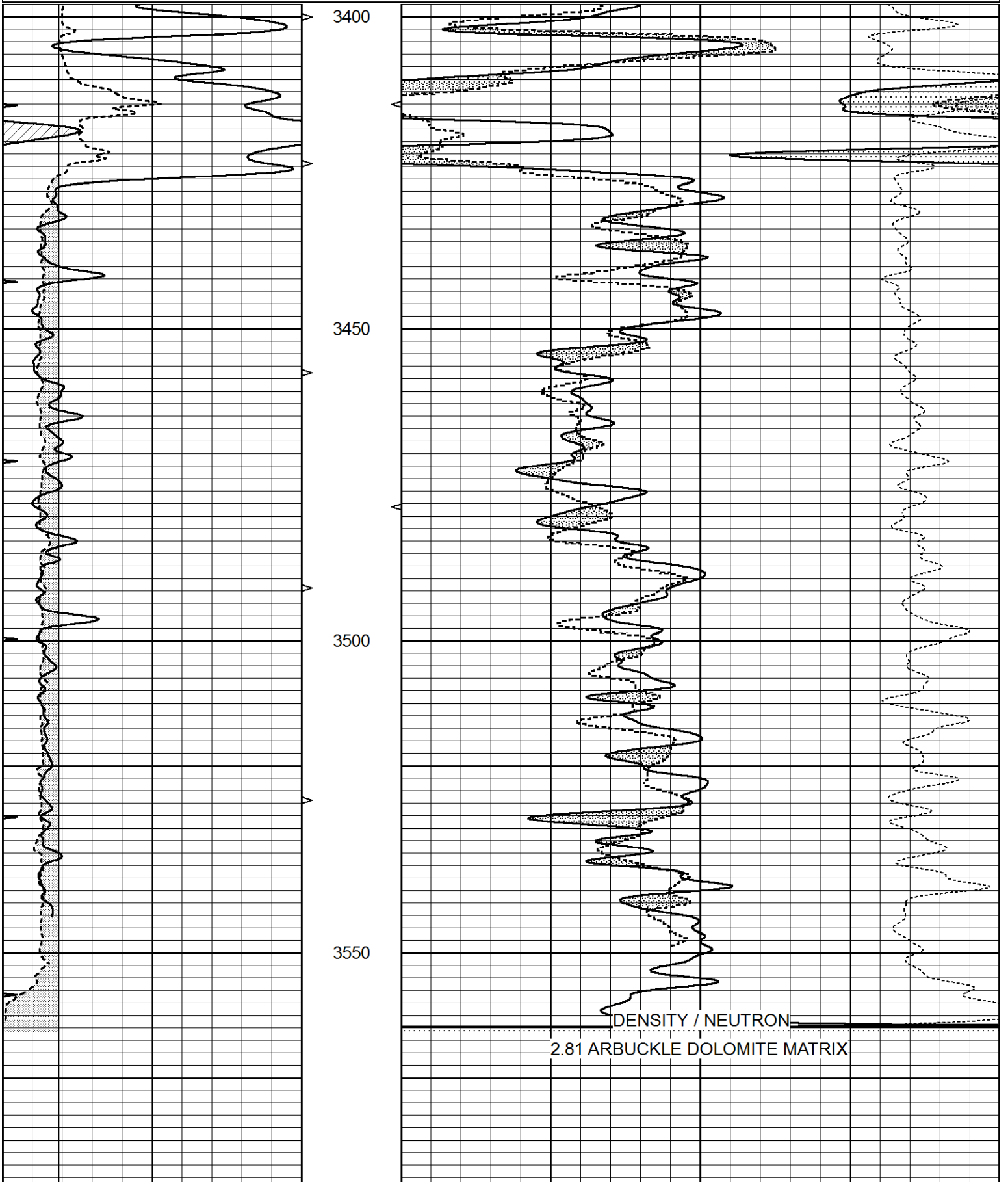


DOLOMITE MATRIX

Database File 5263ddn.db
 Dataset Pathname pass2.2D
 Presentation Format den_neu
 Dataset Creation Mon Mar 22 19:59:24 2021
 Charted by Depth in Feet scaled 1:240

0	GAMMA RAY (GAPI)	150	ABHV	30	COMPENSATED DENSITY (pu)	-10
---	------------------	-----	------	----	--------------------------	-----

6	DCAL (in)	16	10 (ft3)	0	30	COMPENSATED NEUTRON (pu)		-10
0	MINMK	20	TBHV			-0.25	CORRECTION (g/cc)	0.25
			0 (ft3)	10				



0	GAMMA RAY (GAPI)	150	ABHV	30	COMPENSATED DENSITY (pu)		-10	
6	DCAL (in)	16	10 (ft3)	0	30	COMPENSATED NEUTRON (pu)		-10
0	MINMK	20	TBHV			-0.25	CORRECTION (g/cc)	0.25

Calibration Report

Database File 5263ddn.db
 Dataset Pathname pass3.1M
 Dataset Creation Mon Mar 22 20:13:42 2021

Dual Induction Calibration Report

Serial-Model: PROBE7-DILG
 Surface Cal Performed: Mon Mar 22 18:53:59 2021
 Downhole Cal Performed: Thu Mar 12 11:45:10 2020
 After Survey Verification Performed: Thu Mar 12 11:45:00 2020

Surface Calibration

Loop:	Readings			References			Results	
	Air	Loop		Air	Loop		m	b
Deep	-0.014	0.629	V	0.000	400.000	mmho/m	630.000	-10.000
Medium	0.039	0.728	V	0.000	464.000	mmho/m	685.000	-50.000
Internal:	Zero	Cal		Zero	Cal		m	b
Deep	0.011	0.610	V	0.000	400.000	mmho/m	667.135	-7.256
Medium	0.005	0.712	V	0.000	464.000	mmho/m	655.677	-3.102

Downhole Calibration

	Readings			References			Results	
	Zero	Cal		Zero	Cal		m'	b'
Deep	0.000	0.000	mmho/m	14.508	388.384	mmho/m	1.000	0.000
Medium	0.000	0.000	mmho/m	166.367	504.400	mmho/m	1.000	0.000
LL3		7.500	V		1400.000	Ohm-m		
		0.000	V		20.000	Ohm-m		
		-7.200	V		4000.000	mmho-m		

After Survey Verification

	Readings			Targets			Results	
	Zero	Cal		Zero	Cal		m'	b'
Deep	0.000	0.000	mmho/m	0.000	0.000	mmho/m	0.000	0.000
Medium	0.000	0.000	mmho/m	0.000	0.000	mmho/m	0.000	0.000
LL3		1.000	Ohm-m		1.000	Ohm-m		
		0.000	Ohm-m		0.000	Ohm-m		
		0.000	mmho-m		4000.000	mmho-m		

Litho Density Calibration Report

Serial: 004 Model: PRB

Master Calibration

Performed Thu Jan 28 13:15:53 2021

	Background	Magnesium	Aluminum	Aluminum+Fe	
Window 1	1182.9	9855.6	3179.6	2818.8	cps
Window 2	1073.6	8204.9	2708.2	2458.3	cps
Window 3	887.9	4656.3	1694.9	1596.1	cps
Window 4	243.5	250.4	242.2	245.6	cps
Long Space	0.0	7131.3	1634.6	1384.6	cps
Short Space	1.6	1661.2	1115.7	935.2	cps
Rho		1.7100	2.5900	0.0000	g/cc
Pe		2.0000	2.7500	5.7900	

Rib Angle : 44.9 Rib Slope : 0.996 Density/Spine Ratio : 0.577

Spine Angle : 74.9

Spine Slope : 3.700

Spine Intercept : -18.6

Before Survey Verification

Performed Wed Dec 31 18:00:00 1969

Window 1	0.0	0.0	0.0	0.0	cps
Window 2	0.0	0.0	0.0	0.0	cps
Window 3	0.0	0.0	0.0	0.0	cps
Window 4	0.0	0.0	0.0	0.0	cps
Long Space	0.0	0.0	0.0	0.0	cps
Short Space	0.0	0.0	0.0	0.0	cps
Measured Rho		0.0000	0.0000	0.0000	g/cc
Measured Correction		0.0000	0.0000	0.0000	g/cc
Measured Pe			0.0000	0.0000	

After Survey Verification

Performed Wed Dec 31 18:00:00 1969

Window 1	0.0	0.0	0.0	0.0	cps
Window 2	0.0	0.0	0.0	0.0	cps
Window 3	0.0	0.0	0.0	0.0	cps
Window 4	0.0	0.0	0.0	0.0	cps
Long Space	0.0	0.0	0.0	0.0	cps
Short Space	0.0	0.0	0.0	0.0	cps
Measured Rho		0.0000	0.0000	0.0000	g/cc
Measured Correction		0.0000	0.0000	0.0000	g/cc
Measured Pe			0.0000	0.0000	

Compensated Neutron Calibration Report

Serial Number: 070808PMC
Tool Model: NABORS

PRE-SURVEY VERIFICATION

Detector	Readings	Measured	Target
Short Space	cps		
Long Space	cps	pu	pu

POST-SURVEY VERIFICATION

Detector	Readings	Measured	Target
Short Space	cps		
Long Space	cps	pu	pu

Gamma Ray Calibration Report

Serial Number: 070558
Tool Model: OPEN_GR
Performed: Wed Jul 03 10:25:53 2019

Calibrator Value: 1.0 GAPI
Background Reading: 0.0 cps
Calibrator Reading: 1.0 cps
Sensitivity: 0.3000 GAPI/cps