



# DUAL INDUCTION LOG

Company ANCHOR BAY PETROLEUM, LLC.

Well D & S FARMS #1

Field WILDCAT

County ELLIS State KANSAS

Location: API #: 15-051-26995-0000

3680' FSL & 4581' FEL  
NW - NE - SW - NW  
SEC 11 TWP 11S RGE 17W

Other Services  
CDU/CNL  
MEL/SON

Permanent Datum GROUND LEVEL Elevation 1852  
Log Measured From KELLY BUSHING 5' A.G.L.  
Drilling Measured From KELLY BUSHING

Elevation

K.B. 1857  
D.F. 1855  
G.L. 1852

Date	3/22/21
Run Number	ONE
Depth Driller	3580
Depth Logger	3582
Bottom Logged Interval	3580
Top Log Interval	00
Casing Driller	8 5/8"@211'
Casing Logger	211
Bit Size	7 7/8"
Type Fluid in Hole	CHEMICAL MUD
Density / Viscosity	9.1/60
pH / Fluid Loss	10.0/10.0
Source of Sample	FLOWLINE
Rm @ Meas. Temp	.500@79F
Rmf @ Meas. Temp	.375@79F
Rmc @ Meas. Temp	.600@79F
Source of Rmf / Rmc	MEASUREMENT
Rm @ BHT	.353@112F
Time Circulation Stopped	2 HOURS
Time Logger on Bottom	7:00 P.M.
Maximum Recorded Temperature	112F
Equipment Number	922339
Location	HAYS, KANSAS
Recorded By	JEFF LUEBBERS
Witnessed By	ED GLASSMAN

<<< Fold Here >>>

All interpretations are opinions based on inferences from electrical or other measurements and we cannot and do not guarantee the accuracy or correctness of any interpretation, and we shall not, except in the case of gross or willful negligence on our part, be liable or responsible for any loss, costs, damages, or expenses incurred or sustained by anyone resulting from any interpretation made by any of our officers, agents or employees. These interpretations are also subject to our general terms and conditions set out in our current Price Schedule.

15-051-26995-0000

Comments

THANK YOU FOR USING ELI WIRELINE HAYS, KANSAS (785) 628-6395  
DIRECTIONS  
CODELL & SALINE RIVER RD., 1/2N., E. INTO

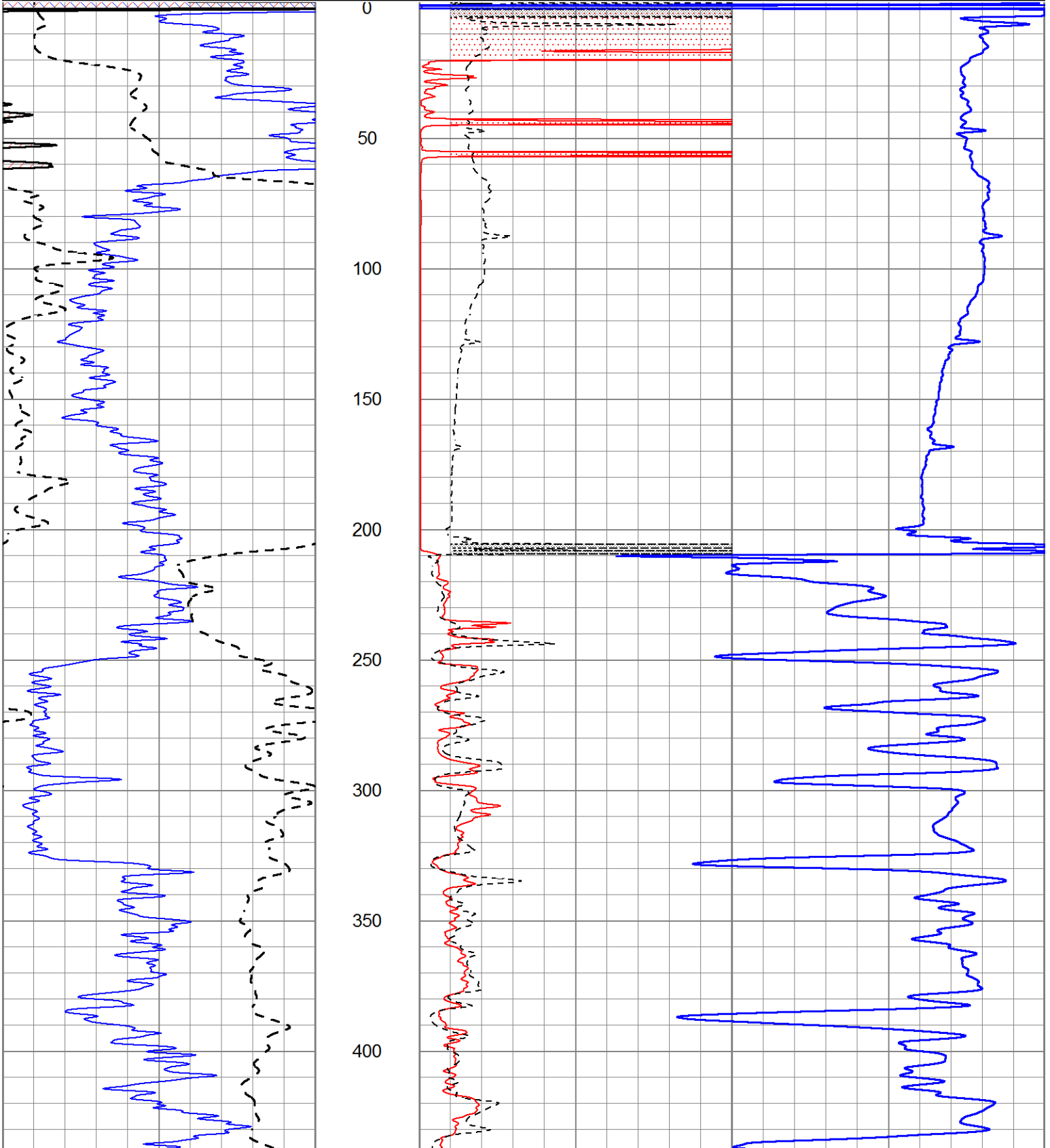


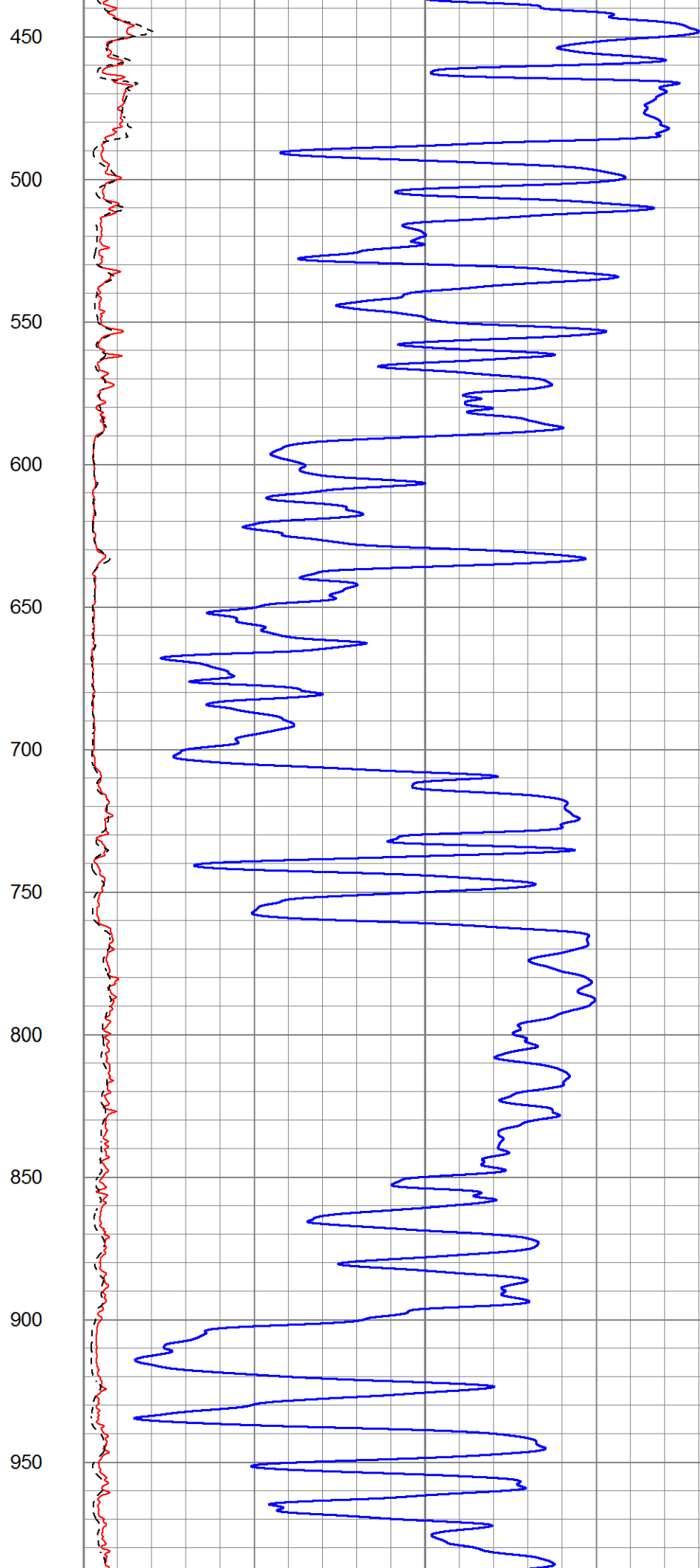
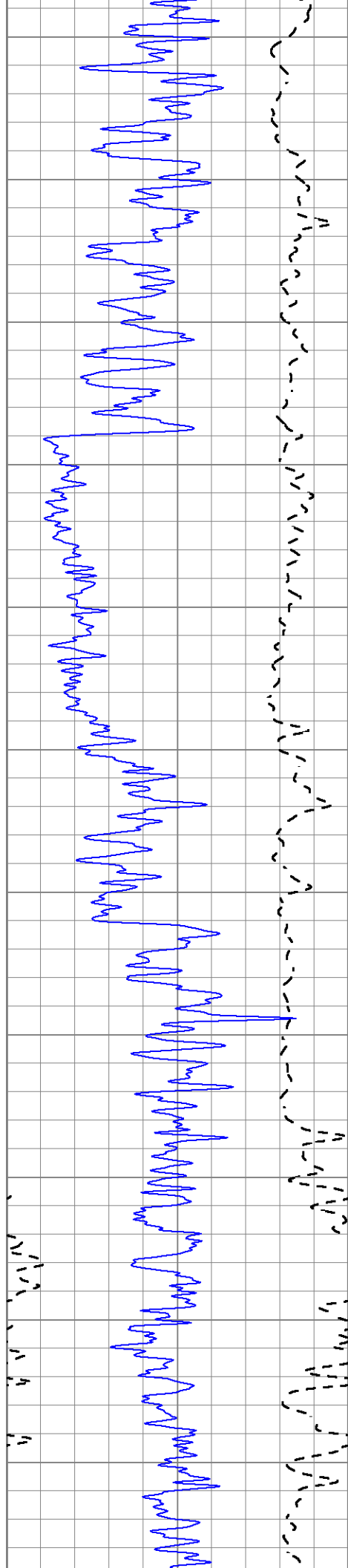
# MAIN SECTION

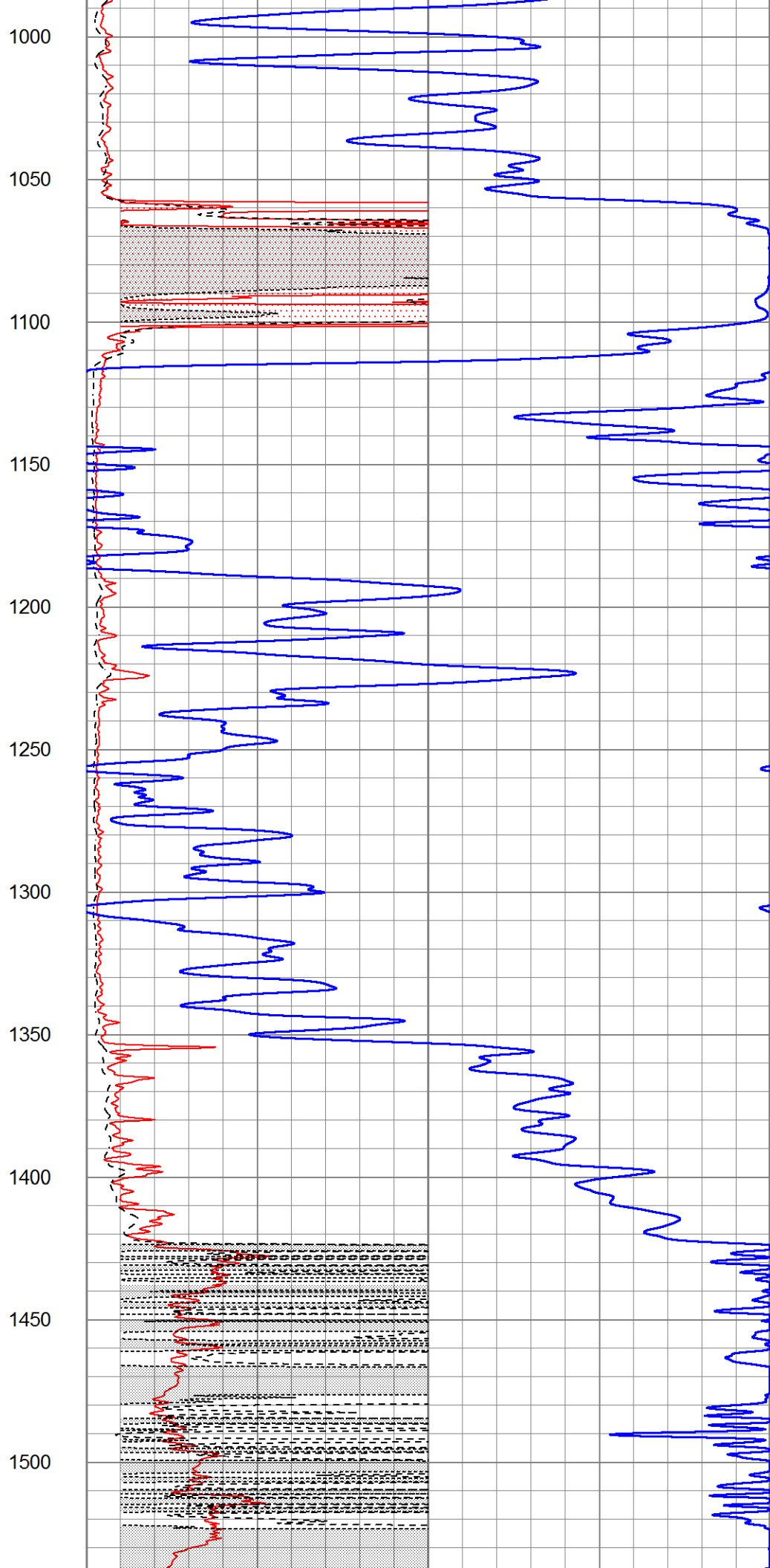
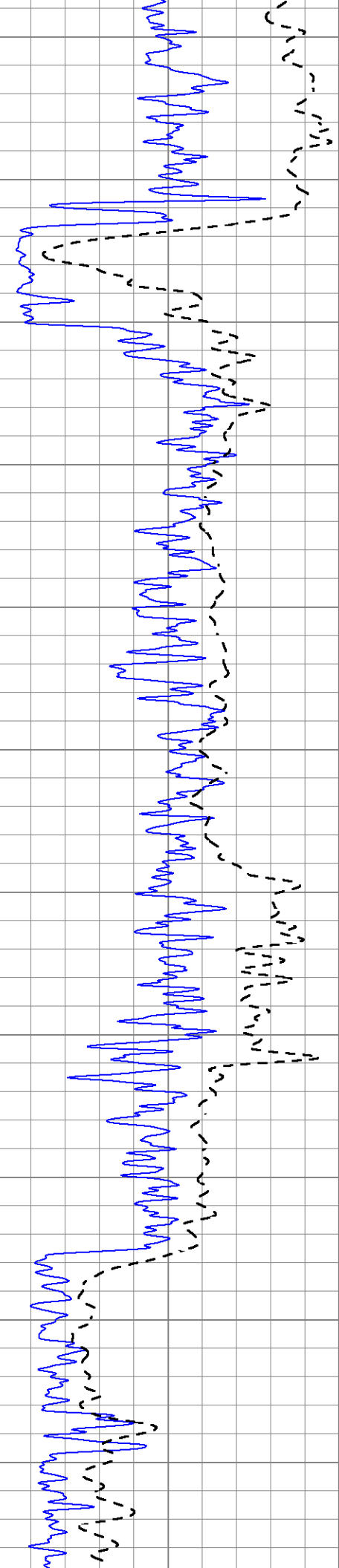
Database File 5263ddn.db  
 Dataset Pathname pass3.2M  
 Presentation Format dil2  
 Dataset Creation Mon Mar 22 21:39:43 2021  
 Charted by Depth in Feet scaled 1:600

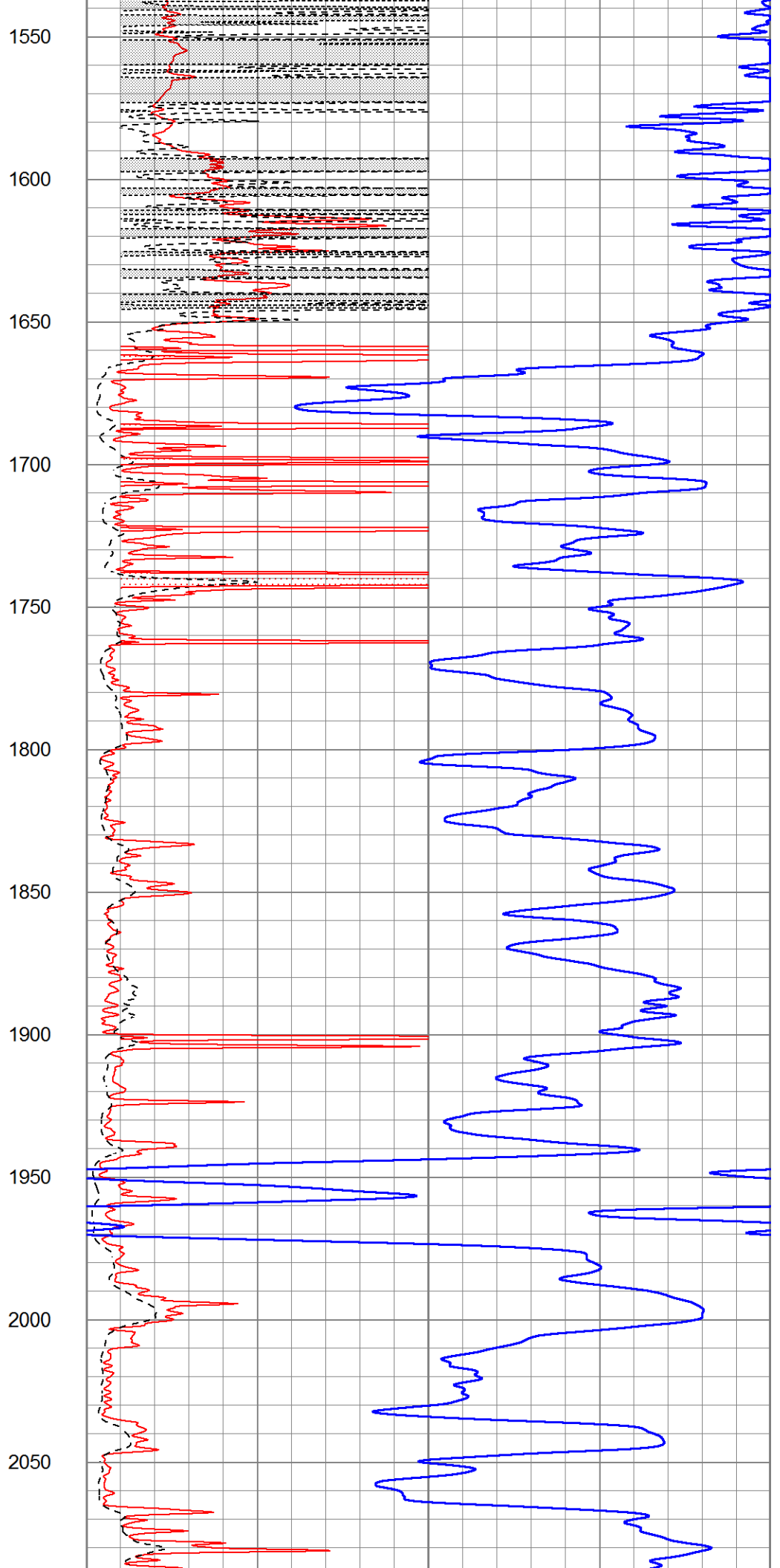
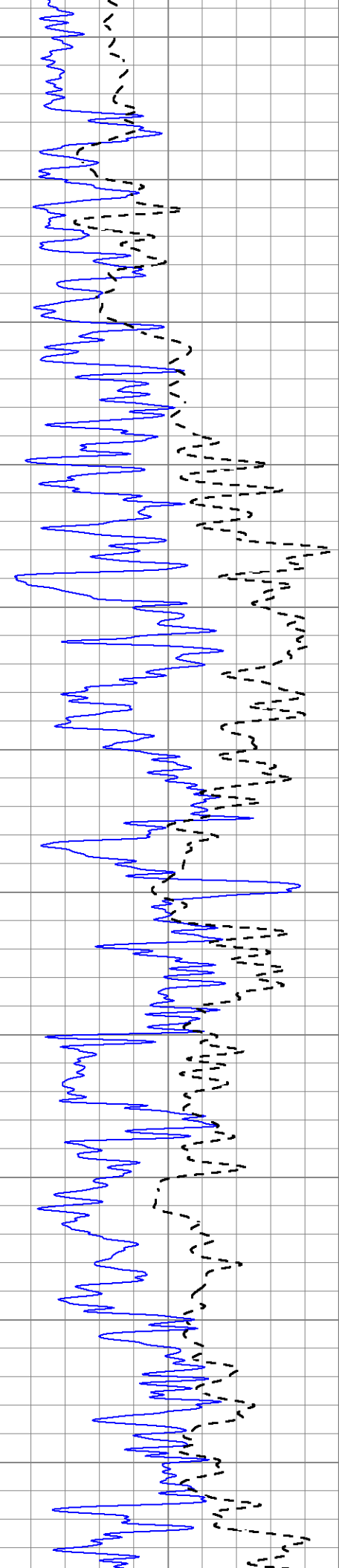
0 Gamma Ray (GAPI) 150  
 -100 SP (mV) 100

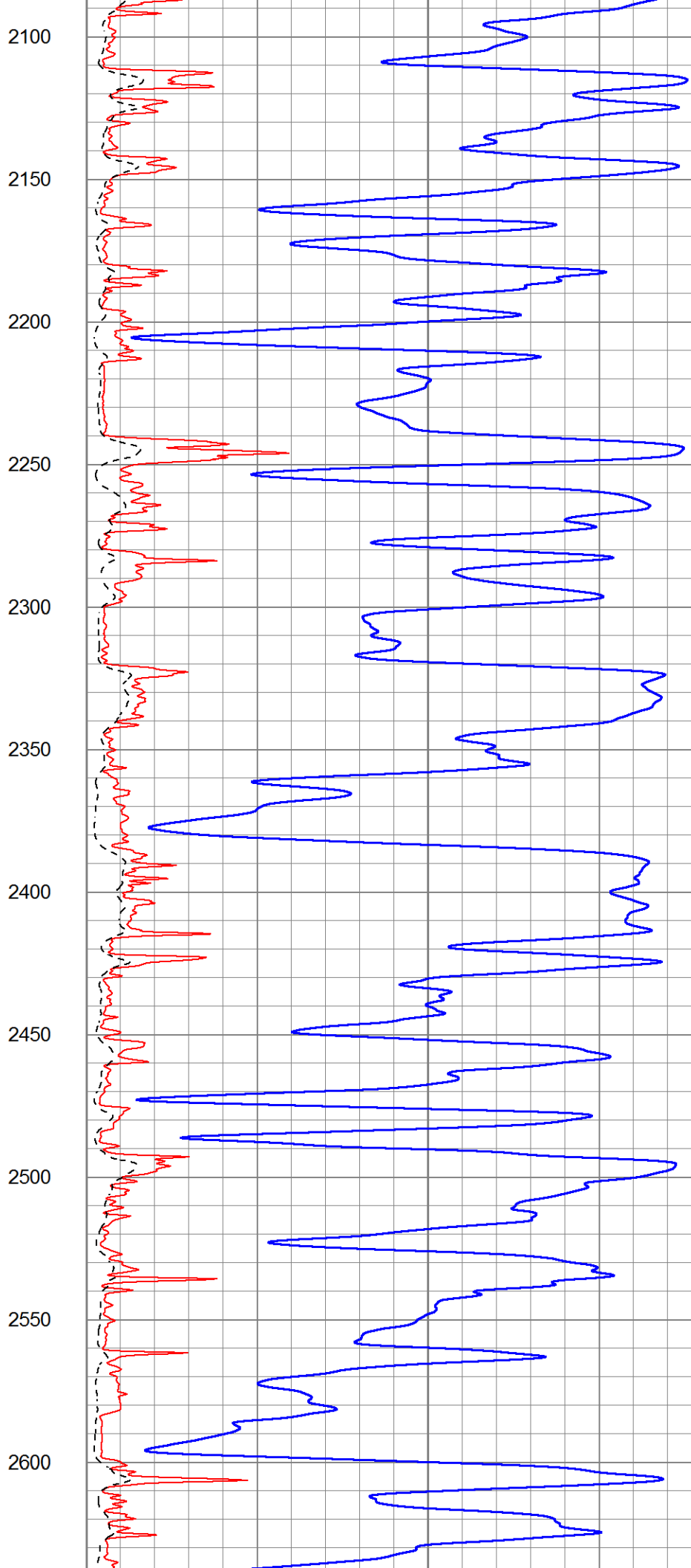
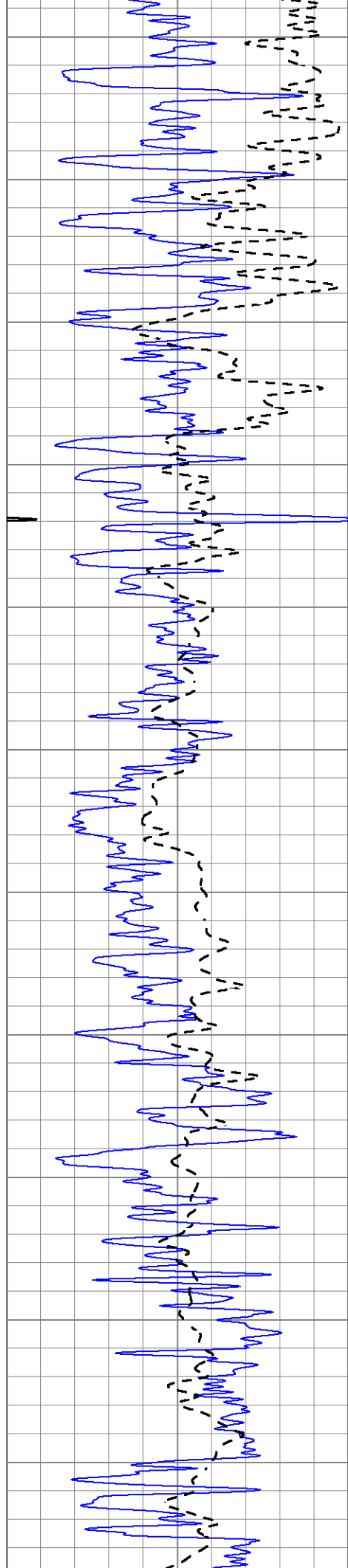
1000 CILD (mmho/m) 0  
 0 RLL3 (Ohm-m) 50  
 0 RILD (Ohm-m) 50  
 50 RILD X10 (Ohm-m) 500  
 50 RLL3 X10 (Ohm-m) 500

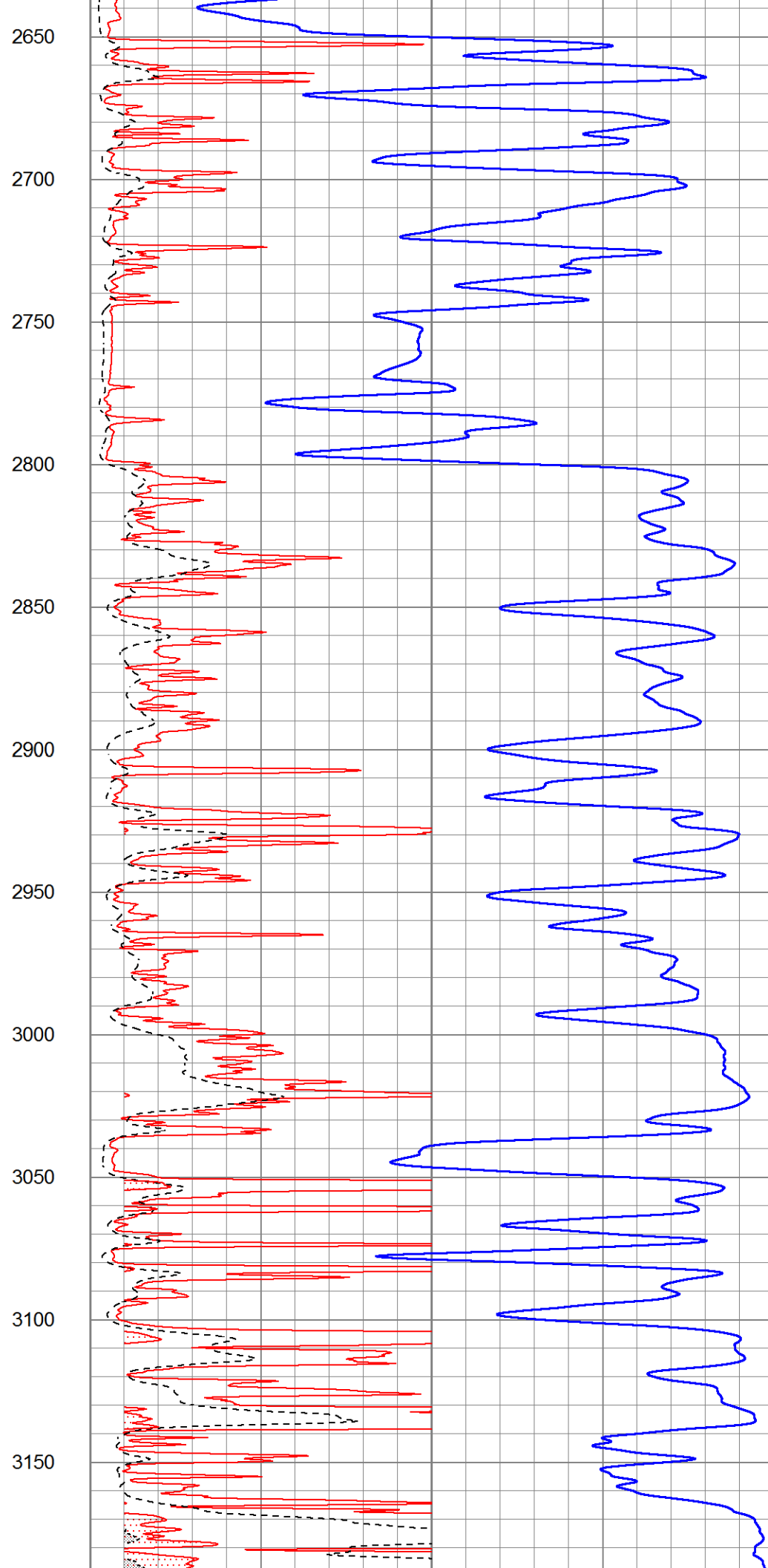
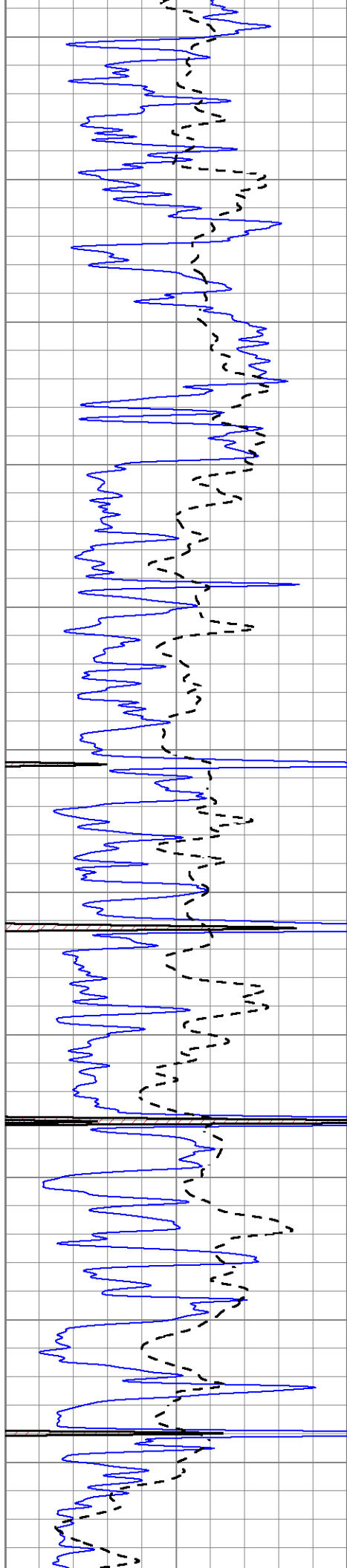


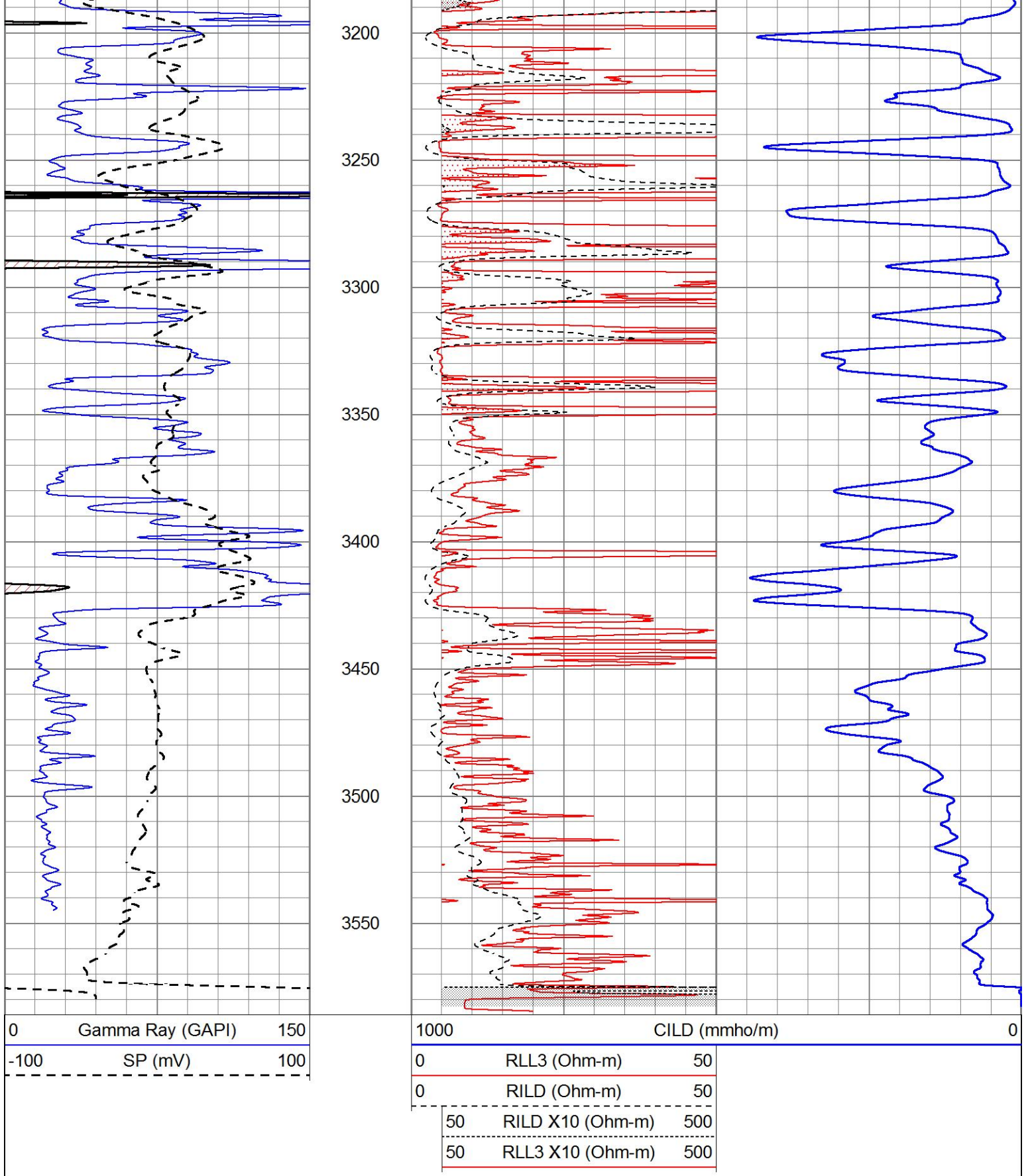










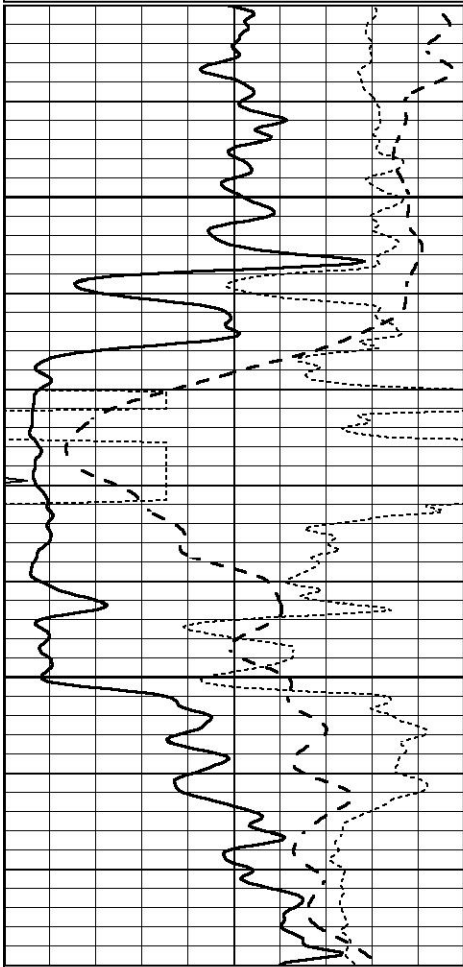


# ANHYDRITE

Database File 5263ddn.db  
 Dataset Pathname pass3.2A  
 Presentation Format dil

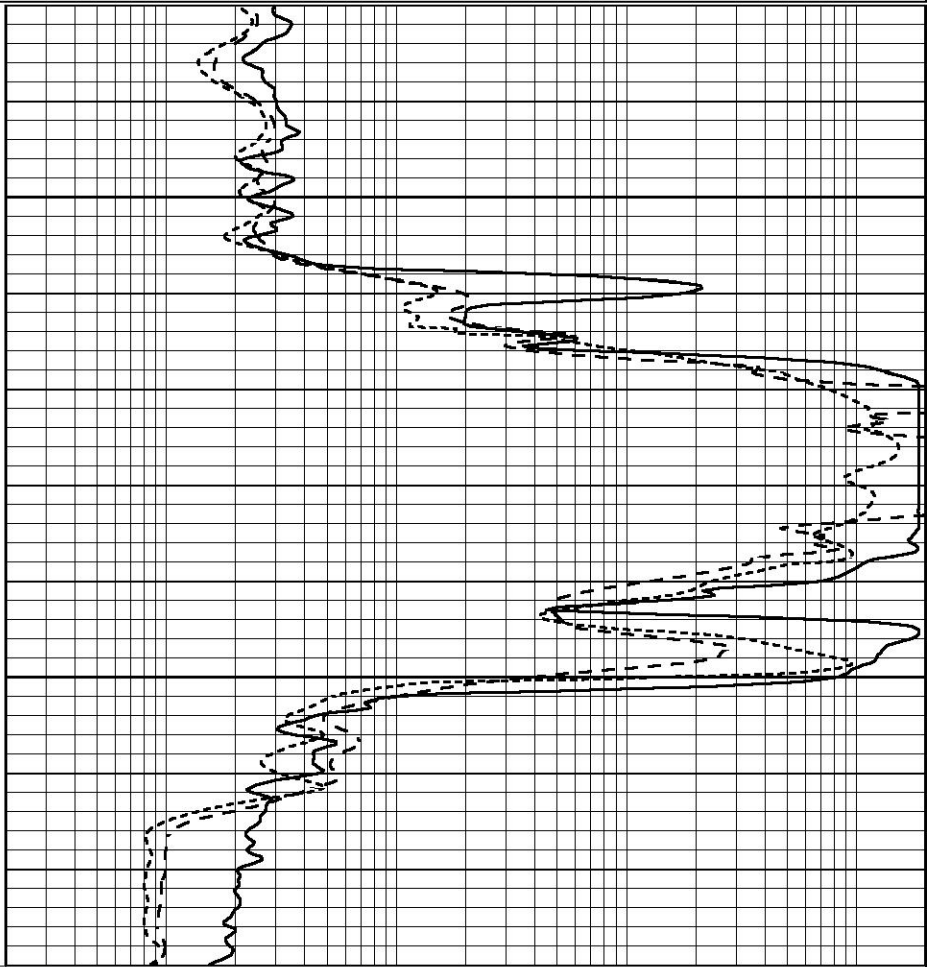
0	GAMMA RAY (GAPI)	150
-100	SP (mV)	100
-250	Rxo/Rt	50
0	MINMK	20

0.2	SHALLOW GUARD (Ohm-m)	2000
0.2	DEEP INDUCTION (Ohm-m)	2000
0.2	MEDIUM INDUCTION (Ohm-m)	2000



1050

1100



0	GAMMA RAY (GAPI)	150
-100	SP (mV)	100
-250	Rxo/Rt	50
0	MINMK	20

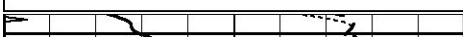
0.2	SHALLOW GUARD (Ohm-m)	2000
0.2	DEEP INDUCTION (Ohm-m)	2000
0.2	MEDIUM INDUCTION (Ohm-m)	2000



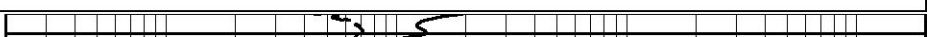
# MAIN SECTION

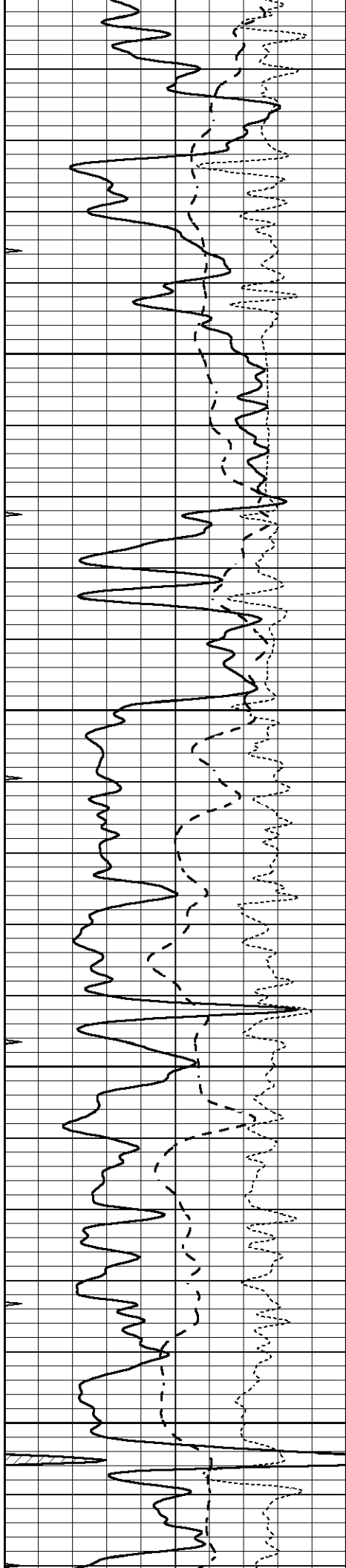
0	GAMMA RAY (GAPI)	150
-100	SP (mV)	100
-250	Rxo/Rt	50
0	MINMK	20

0.2	SHALLOW GUARD (Ohm-m)	2000
0.2	DEEP INDUCTION (Ohm-m)	2000
0.2	MEDIUM INDUCTION (Ohm-m)	2000



2700





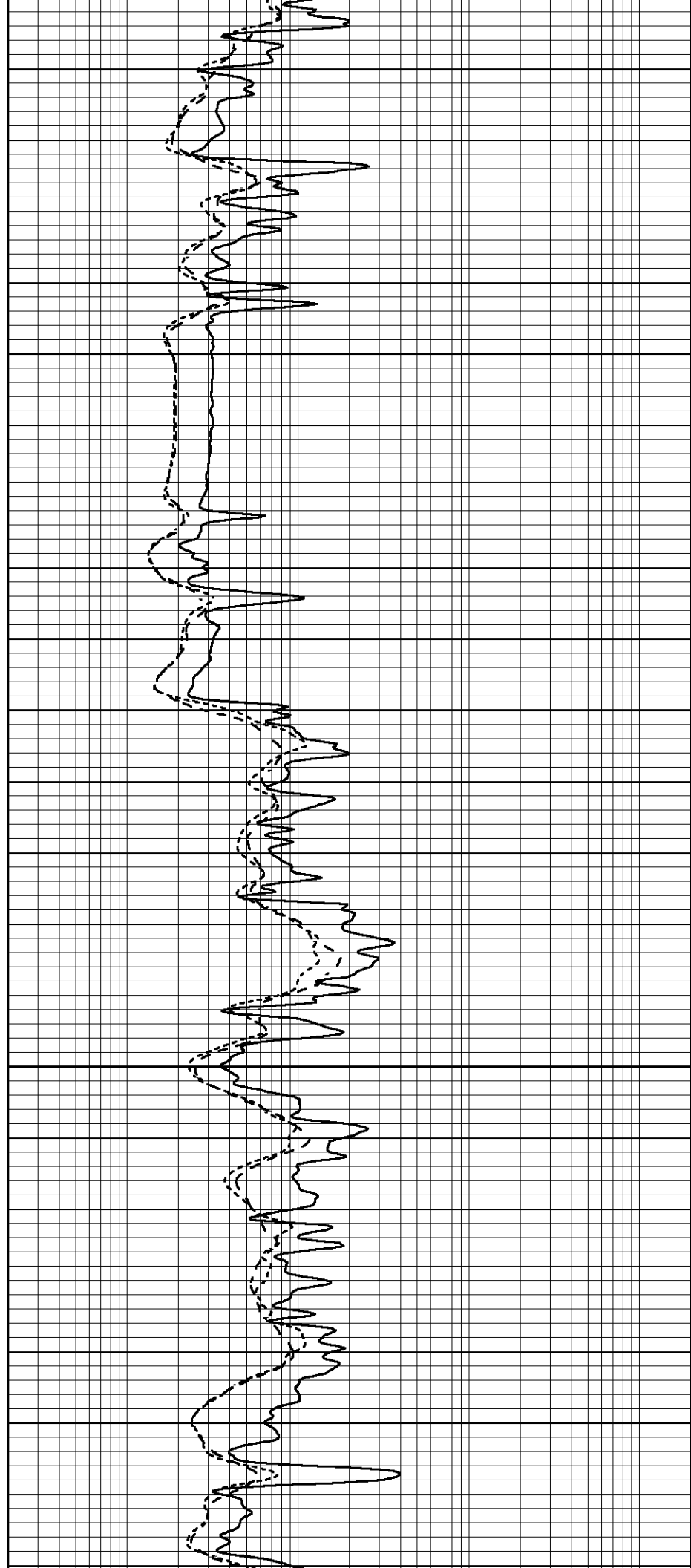
2700

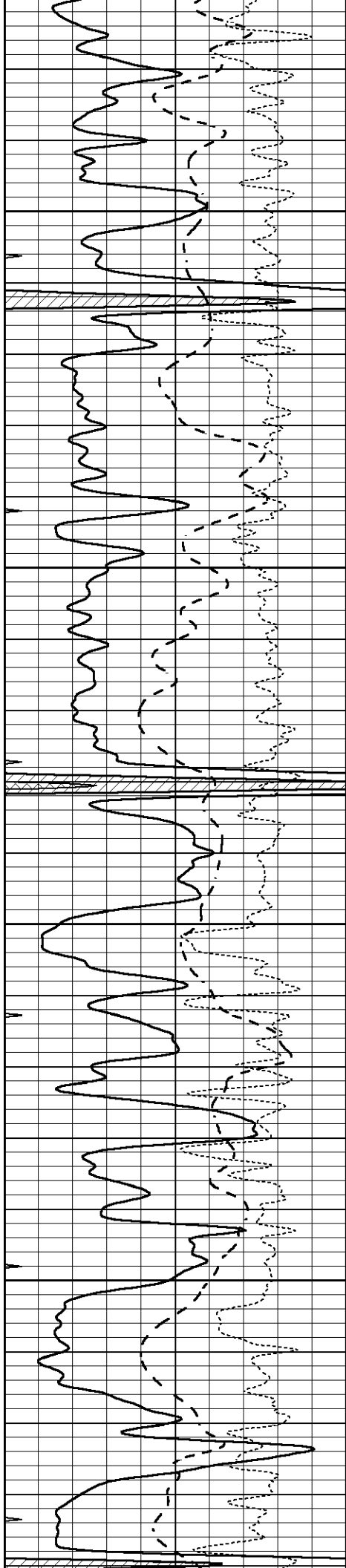
2750

2800

2850

2900



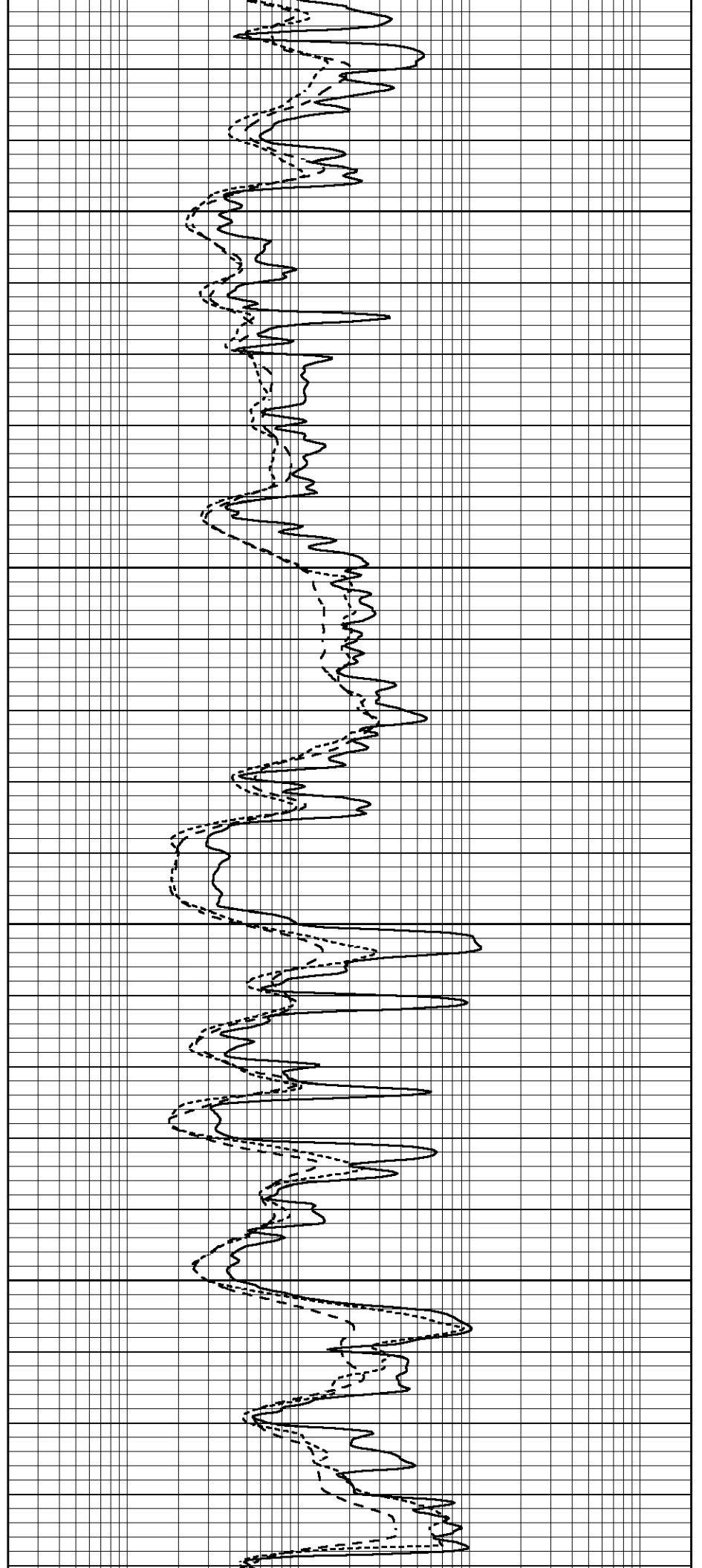


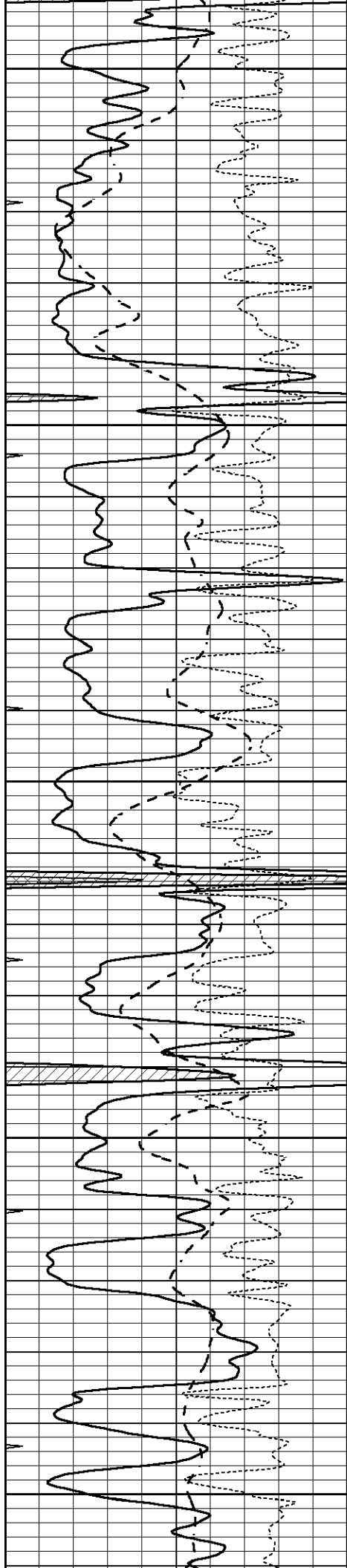
2950

3000

3050

3100





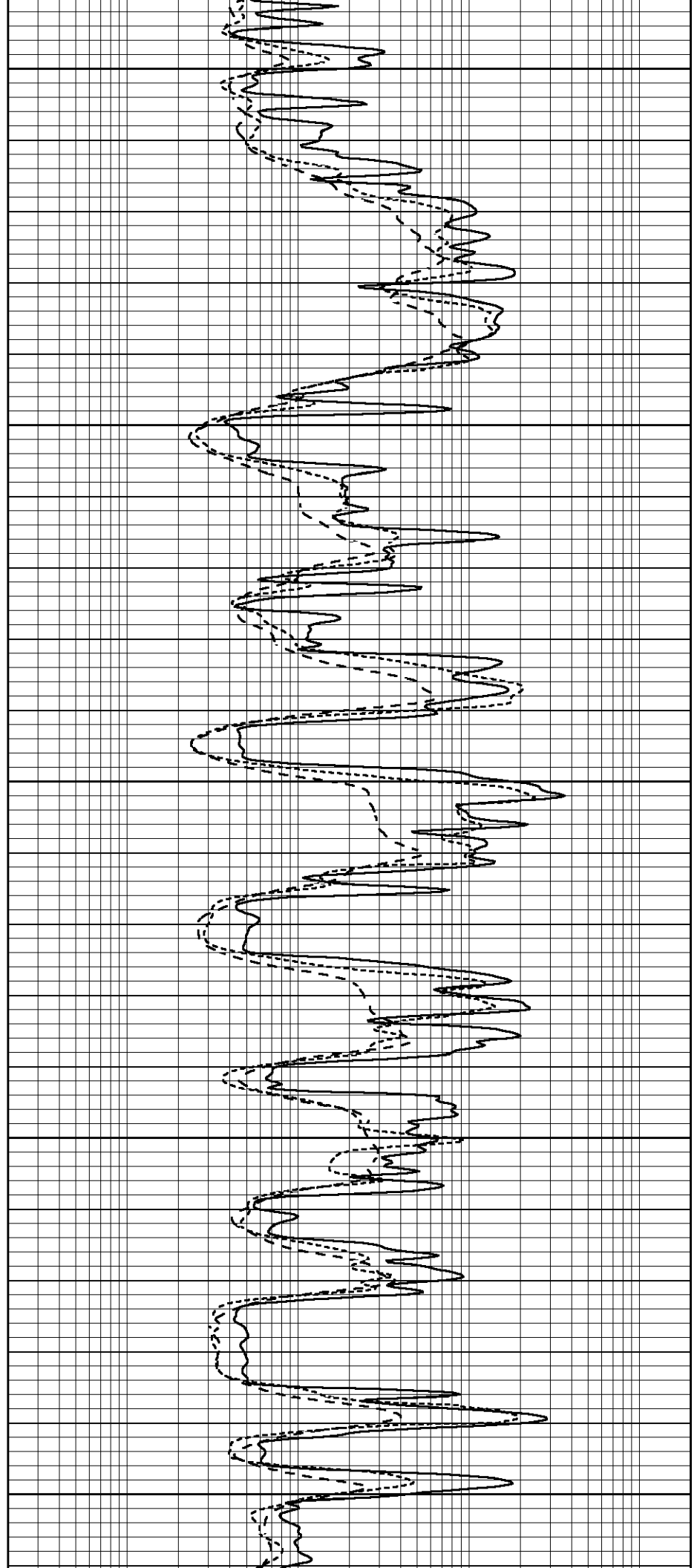
3150

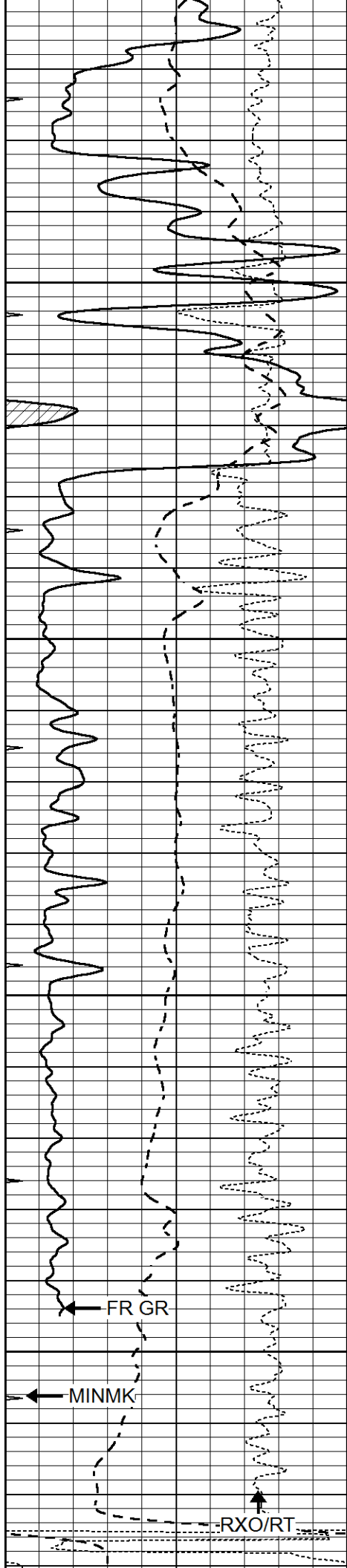
3200

3250

3300

3350



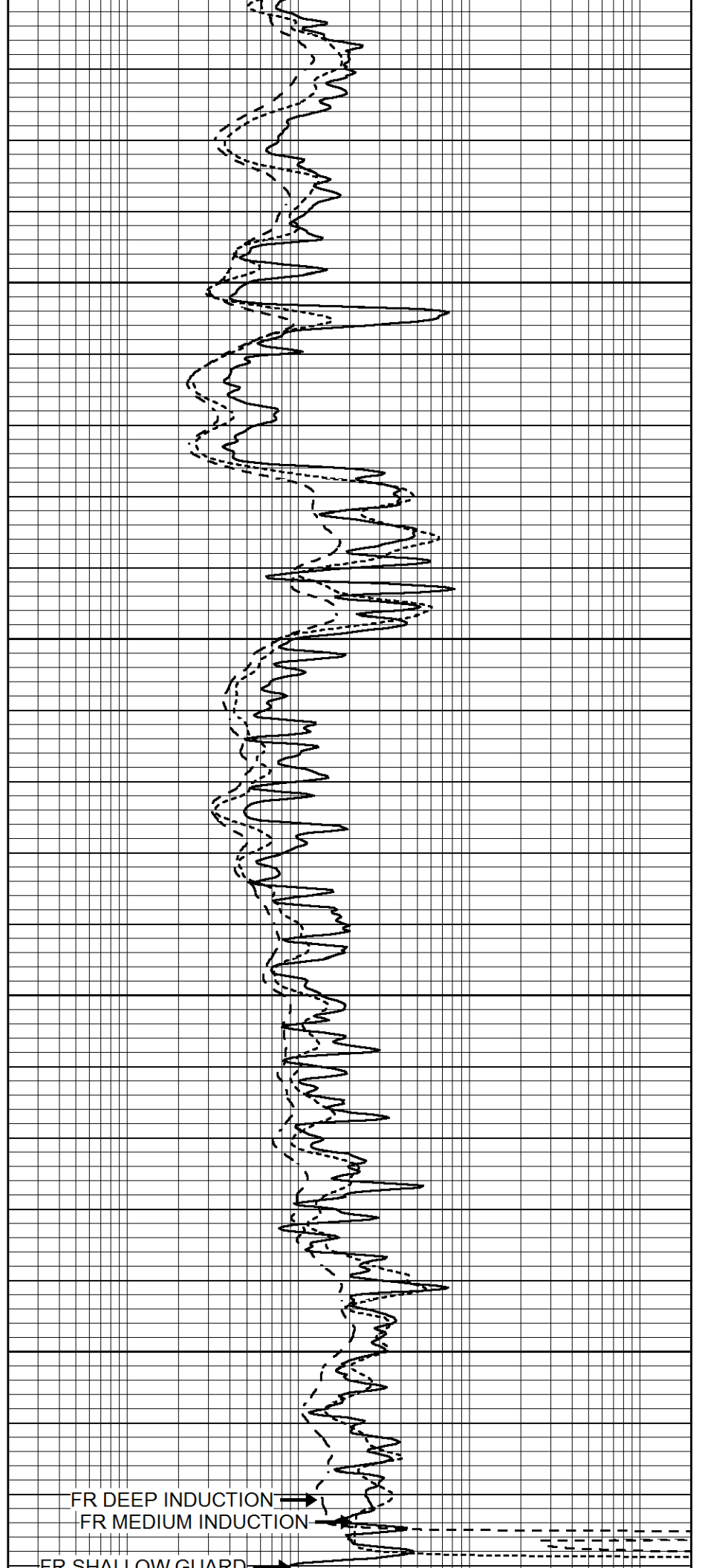


3400

3450

3500

3550



FR DEEP INDUCTION

FR MEDIUM INDUCTION

FR SHALLOW GUARD

LTD 3582

0	GAMMA RAY (GAPI)	150
-100	SP (mV)	100
-250	Rxo/Rt	50
0	MINMK	20

0.2	SHALLOW GUARD (Ohm-m)	2000
0.2	DEEP INDUCTION (Ohm-m)	2000
0.2	MEDIUM INDUCTION (Ohm-m)	2000

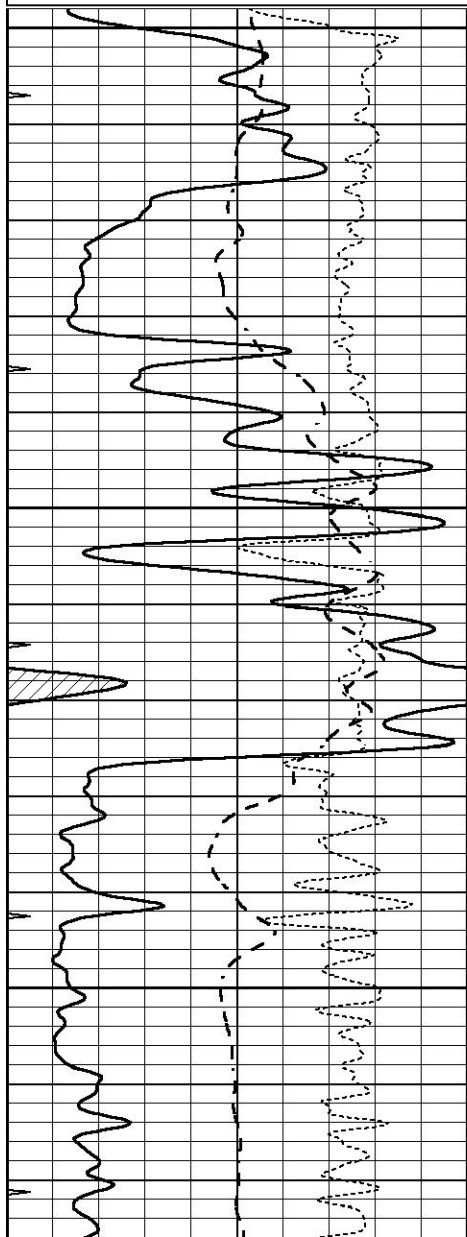


# REPEAT SECTION

Database File 5263ddn.db  
 Dataset Pathname pass2.2R  
 Presentation Format \_dil  
 Dataset Creation Mon Mar 22 21:23:12 2021  
 Charted by Depth in Feet scaled 1:240

0	GAMMA RAY (GAPI)	150
-100	SP (mV)	100
-250	Rxo/Rt	50
0	MINMK	20

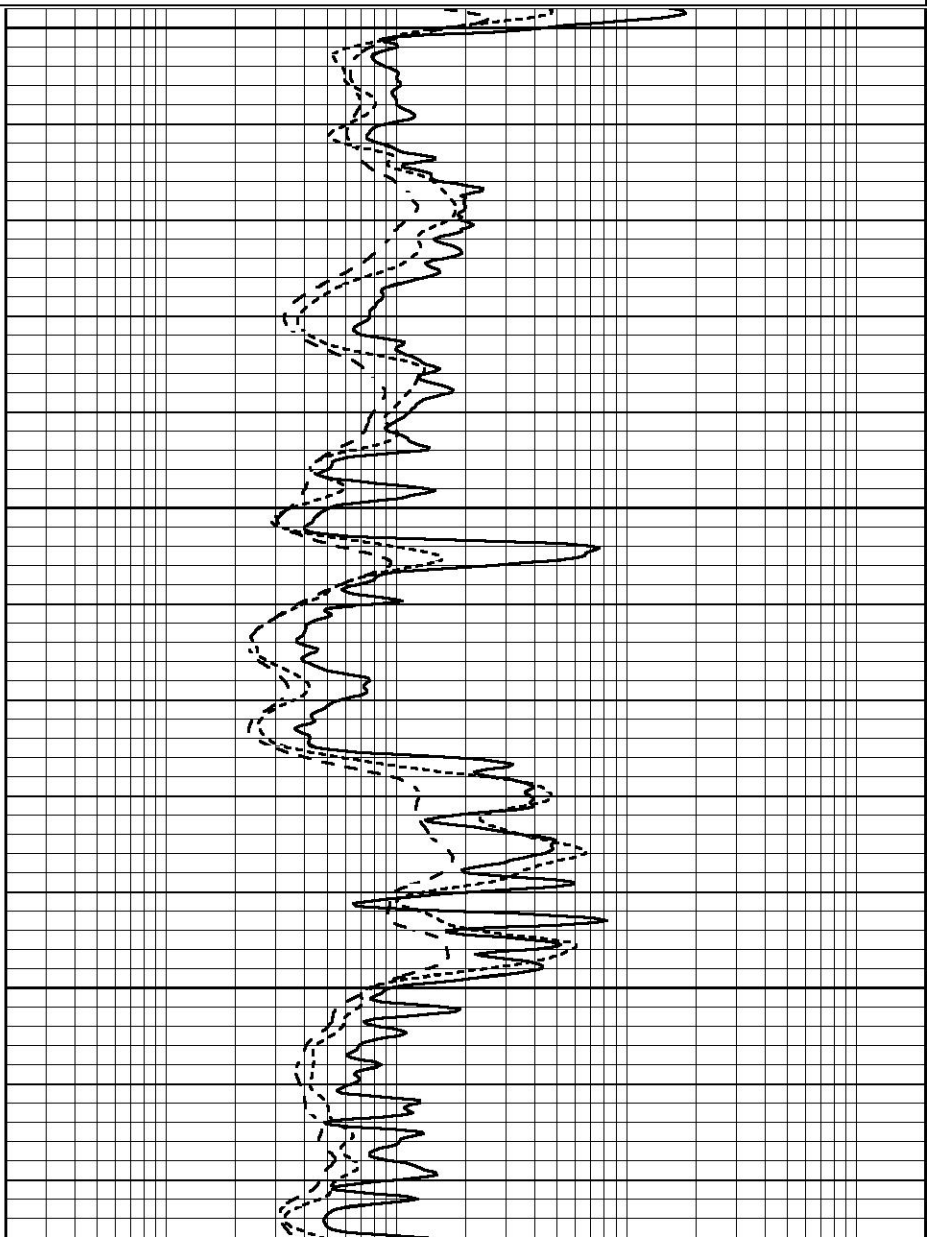
0.2	SHALLOW GUARD (Ohm-m)	2000
0.2	DEEP INDUCTION (Ohm-m)	2000
0.2	MEDIUM INDUCTION (Ohm-m)	2000

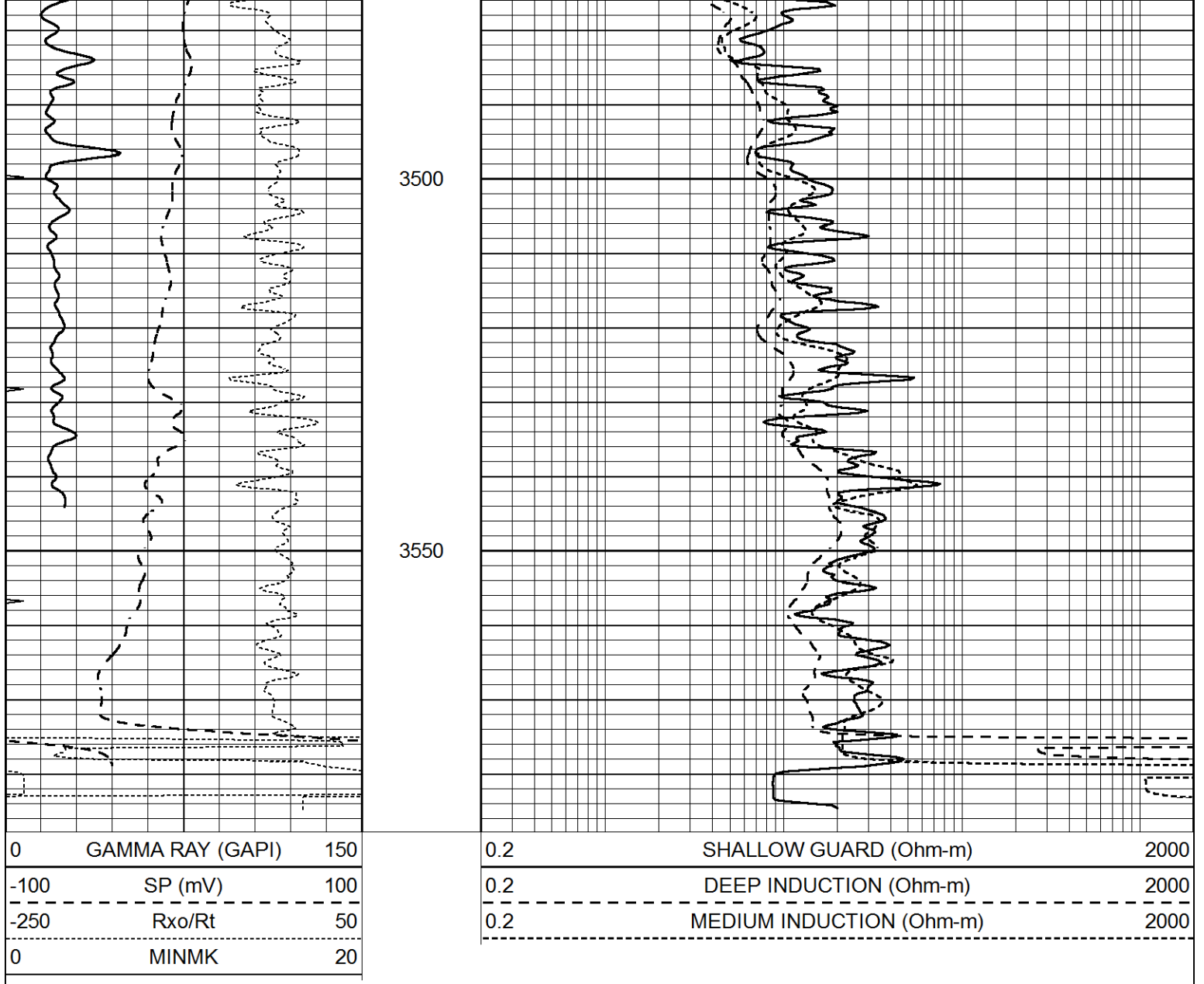


3350

3400

3450





### Calibration Report

Database File 5263ddn.db  
 Dataset Pathname pass3.1M  
 Dataset Creation Mon Mar 22 20:13:42 2021

### Dual Induction Calibration Report

Serial-Model: PROBE7-DILG  
 Surface Cal Performed: Mon Mar 22 18:53:59 2021  
 Downhole Cal Performed: Thu Mar 12 11:45:10 2020  
 After Survey Verification Performed: Thu Mar 12 11:45:00 2020

#### Surface Calibration

Loop:	Readings			References			Results	
	Air	Loop		Air	Loop		m	b
Deep	-0.014	0.629	V	0.000	400.000	mmho/m	630.000	-10.000
Medium	0.039	0.728	V	0.000	464.000	mmho/m	685.000	-50.000
Internal:	Zero	Cal		Zero	Cal		m	b
Deep	0.011	0.610	V	0.000	400.000	mmho/m	667.135	-7.256
Medium	0.005	0.712	V	0.000	464.000	mmho/m	655.677	-3.102

Downhole Calibration			Readings		References		Results	
	Zero	Cal		Zero	Cal		m'	b'
Deep	0.000	0.000	mmho/m	14.508	388.384	mmho/m	1.000	0.000
Medium	0.000	0.000	mmho/m	166.367	504.400	mmho/m	1.000	0.000
LL3		7.500	V		1400.000	Ohm-m		
		0.000	V		20.000	Ohm-m		
		-7.200	V		4000.000	mmho-m		

After Survey Verification			Readings		Targets		Results	
	Zero	Cal		Zero	Cal		m'	b'
Deep	0.000	0.000	mmho/m	0.000	0.000	mmho/m	0.000	0.000
Medium	0.000	0.000	mmho/m	0.000	0.000	mmho/m	0.000	0.000
LL3		1.000	Ohm-m		1.000	Ohm-m		
		0.000	Ohm-m		0.000	Ohm-m		
		0.000	mmho-m		4000.000	mmho-m		

Litho Density Calibration Report  
Serial: 004      Model: PRB

Master Calibration		Performed Thu Jan 28 13:15:53 2021			
	Background	Magnesium	Aluminum	Aluminum+Fe	
Window 1	1182.9	9855.6	3179.6	2818.8	cps
Window 2	1073.6	8204.9	2708.2	2458.3	cps
Window 3	887.9	4656.3	1694.9	1596.1	cps
Window 4	243.5	250.4	242.2	245.6	cps
Long Space	0.0	7131.3	1634.6	1384.6	cps
Short Space	1.6	1661.2	1115.7	935.2	cps
Rho		1.7100	2.5900	0.0000	g/cc
Pe		2.0000	2.7500	5.7900	
Rib Angle	: 44.9	Rib Slope	: 0.996	Density/Spine Ratio	: 0.577
Spine Angle	: 74.9	Spine Slope	: 3.700	Spine Intercept	: -18.6

Before Survey Verification		Performed Wed Dec 31 18:00:00 1969			
Window 1	0.0	0.0	0.0	0.0	cps
Window 2	0.0	0.0	0.0	0.0	cps
Window 3	0.0	0.0	0.0	0.0	cps
Window 4	0.0	0.0	0.0	0.0	cps
Long Space	0.0	0.0	0.0	0.0	cps
Short Space	0.0	0.0	0.0	0.0	cps
Measured Rho		0.0000	0.0000	0.0000	g/cc
Measured Correction		0.0000	0.0000	0.0000	g/cc
Measured Pe			0.0000	0.0000	

After Survey Verification		Performed Wed Dec 31 18:00:00 1969			
Window 1	0.0	0.0	0.0	0.0	cps
Window 2	0.0	0.0	0.0	0.0	cps
Window 3	0.0	0.0	0.0	0.0	cps
Window 4	0.0	0.0	0.0	0.0	cps
Long Space	0.0	0.0	0.0	0.0	cps
Short Space	0.0	0.0	0.0	0.0	cps
Measured Rho		0.0000	0.0000	0.0000	g/cc
Measured Correction		0.0000	0.0000	0.0000	g/cc

Measured Correction:  
Measured Pe

0.0000

0.0000

0.0000

g/cc

Compensated Neutron Calibration Report

Serial Number: 070808PMC  
Tool Model: NABORS

PRE-SURVEY VERIFICATION

Detector	Readings	Measured	Target
Short Space	cps		
Long Space	cps	pu	pu

POST-SURVEY VERIFICATION

Detector	Readings	Measured	Target
Short Space	cps		
Long Space	cps	pu	pu

Gamma Ray Calibration Report

Serial Number: 070558  
Tool Model: OPEN\_GR  
Performed: Wed Jul 03 10:25:53 2019

Calibrator Value: 1.0 GAPI

Background Reading: 0.0 cps  
Calibrator Reading: 1.0 cps

Sensitivity: 0.3000 GAPI/cps