

MICRO LOG



Company ANCHOR BAY PETROLEUM, LLC.
 Well D & S FARMS #1
 Field WILDCAT
 County ELLIS
 State KANSAS

Company ANCHOR BAY PETROLEUM, LLC.
 Well D & S FARMS #1
 Field WILDCAT
 County ELLIS State KANSAS

Location: API #: 15-051-26995-0000
 3680' FSL & 4581' FEL
 NW - NE - SW - NW
 SEC 11 TWP 11S RGE 17W
 Permanent Datum GROUND LEVEL Elevation 1852
 Log Measured From KELLY BUSHING 5' A.G.L.
 Drilling Measured From KELLY BUSHING
 Other Services CDL/CNL DIL/SON
 Elevation K.B. 1857 D.F. 1855 G.L. 1852

Date	3/22/21		
Run Number	TWO		
Depth Driller	3580		
Depth Logger	3582		
Bottom Logged Interval	3566		
Top Log Interval	2700		
Casing Driller	8 5/8"@211'		
Casing Logger	211		
Bit Size	7 7/8"		
Type Fluid in Hole	CHEMICAL MUD	CHLORIDES 8,800 PPM	
Density / Viscosity	9.1/60		
pH / Fluid Loss	10.0/10.0		
Source of Sample	FLOWLINE		
Rm @ Meas. Temp	.500@79F		
Rmf @ Meas. Temp	.375@79F		
Rmc @ Meas. Temp	.600@79F		
Source of Rmf / Rmc	MEASUREMENT		
Rm @ BHT	.353@112F		
Time Circulation Stopped	3.5 HOURS		
Time Logger on Bottom	9:00 P.M.		
Maximum Recorded Temperature	112F		
Equipment Number	922339		
Location	HAYS, KANSAS		
Recorded By	JEFF LUEBBERS		
Witnessed By	ED GLASSMAN		

<<< Fold Here >>>

All interpretations are opinions based on inferences from electrical or other measurements and we cannot and do not guarantee the accuracy or correctness of any interpretation, and we shall not, except in the case of gross or willful negligence on our part, be liable or responsible for any loss, costs, damages, or expenses incurred or sustained by anyone resulting from any interpretation made by any of our officers, agents or employees. These interpretations are also subject to our general terms and conditions set out in our current Price Schedule.

15-051-26995-0000 Comments

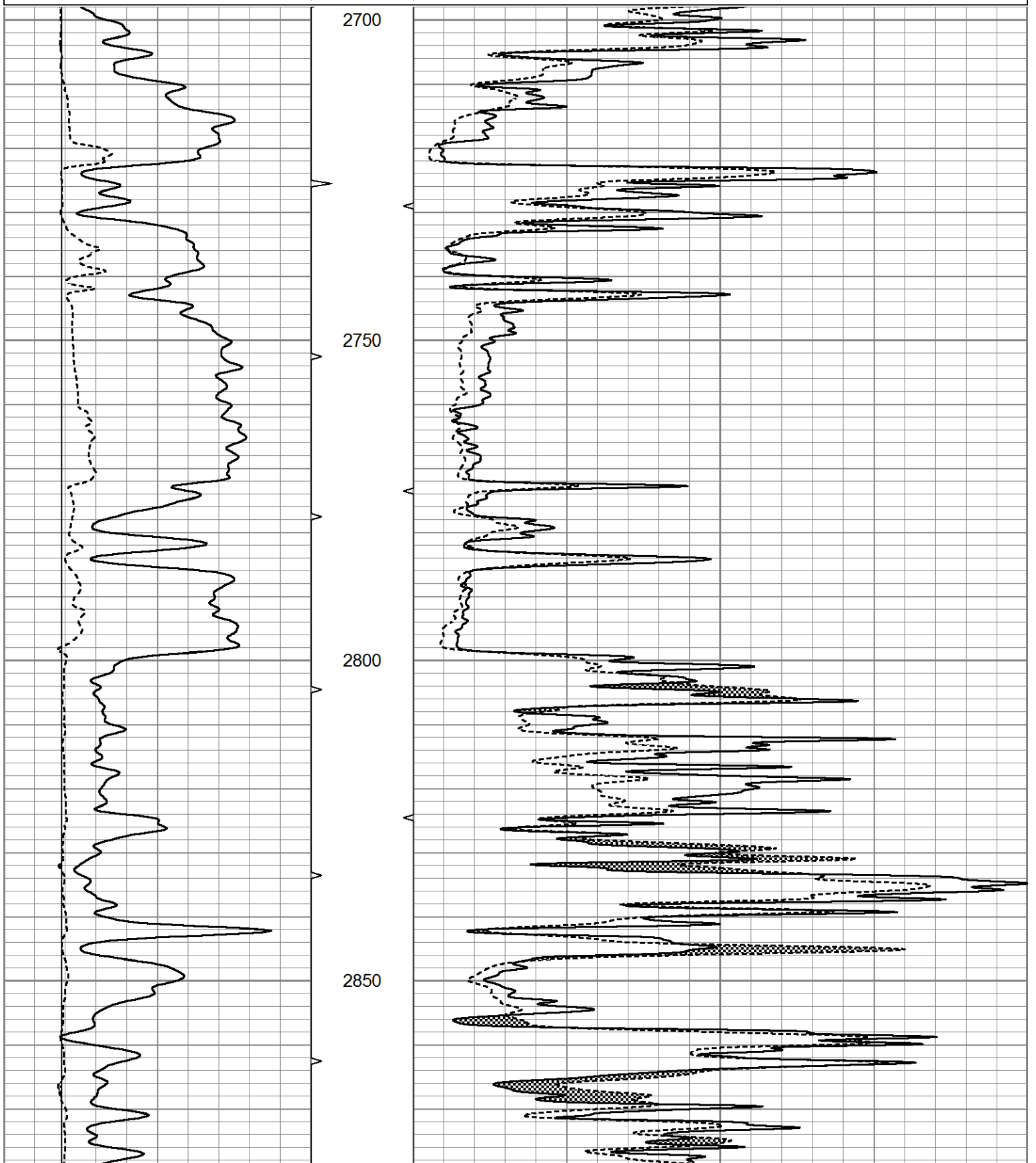
THANK YOU FOR USING ELI WIRELINE HAYS, KANSAS (785) 628-6395
 DIRECTIONS
 CODELL & SALINE RIVER RD., 1/2N., E. INTO

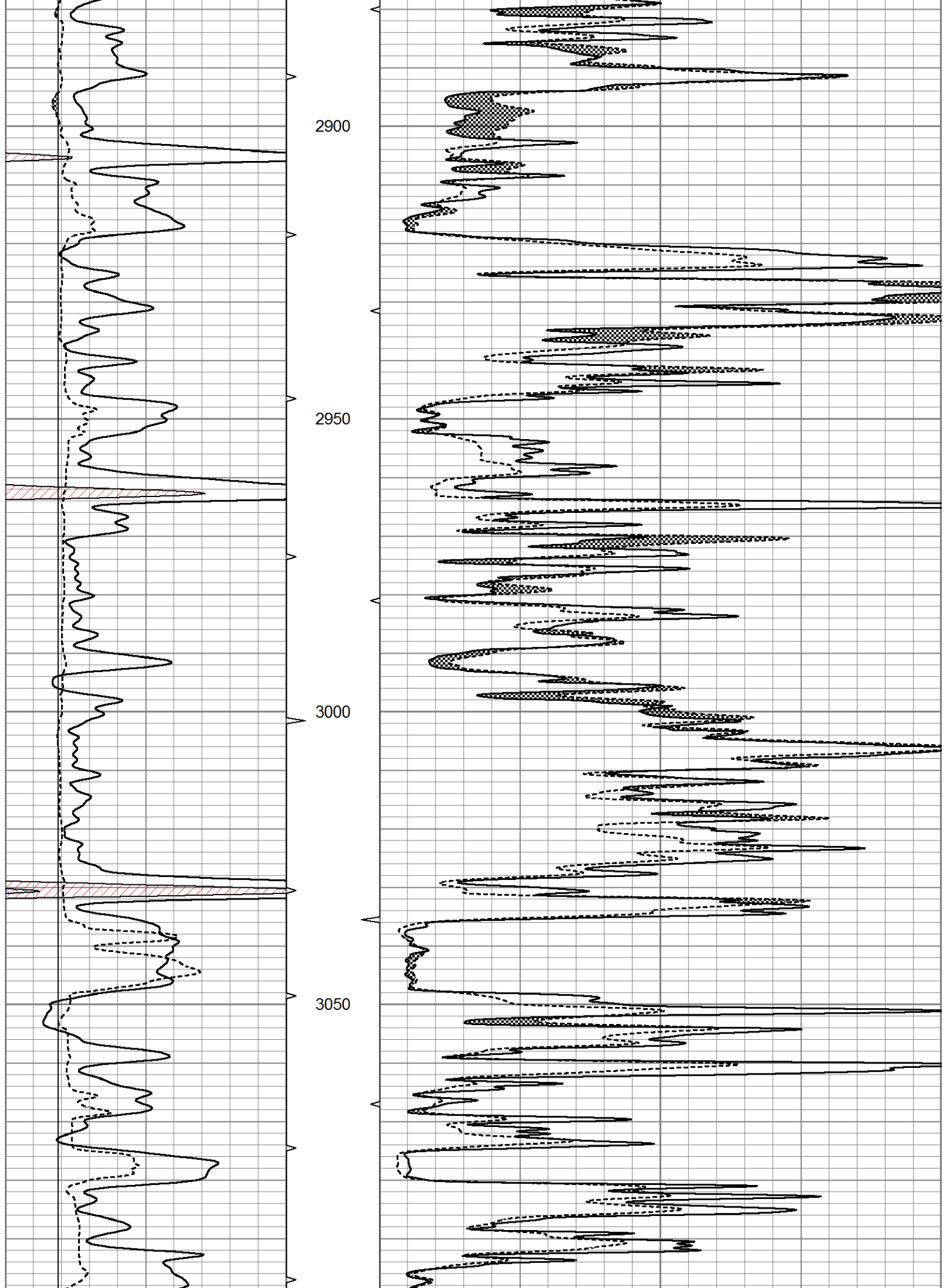


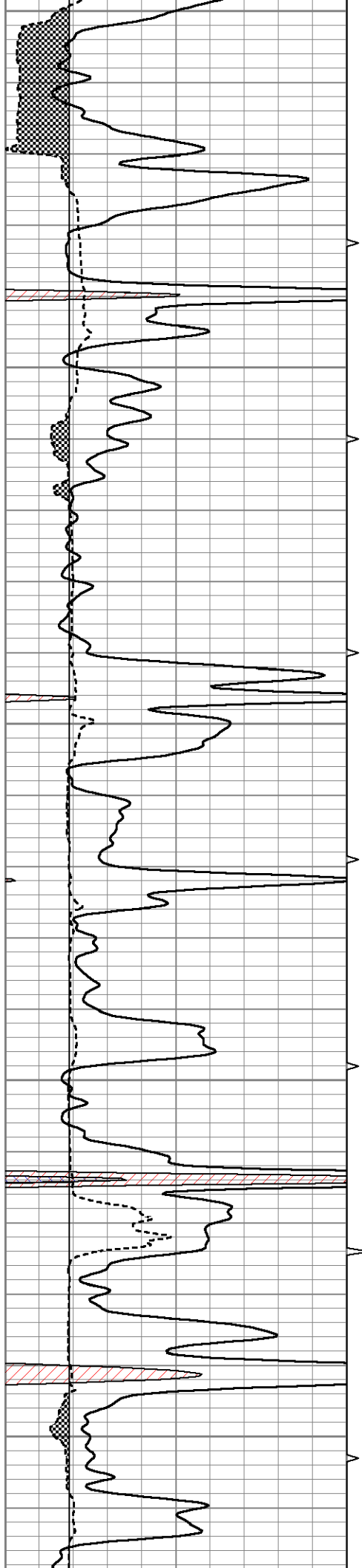
MAIN SECTION

Database File 5263ddn.db
 Dataset Pathname pass8.1M
 Presentation Format micro
 Dataset Creation Mon Mar 22 22:41:06 2021
 Charted by Depth in Feet scaled 1:240

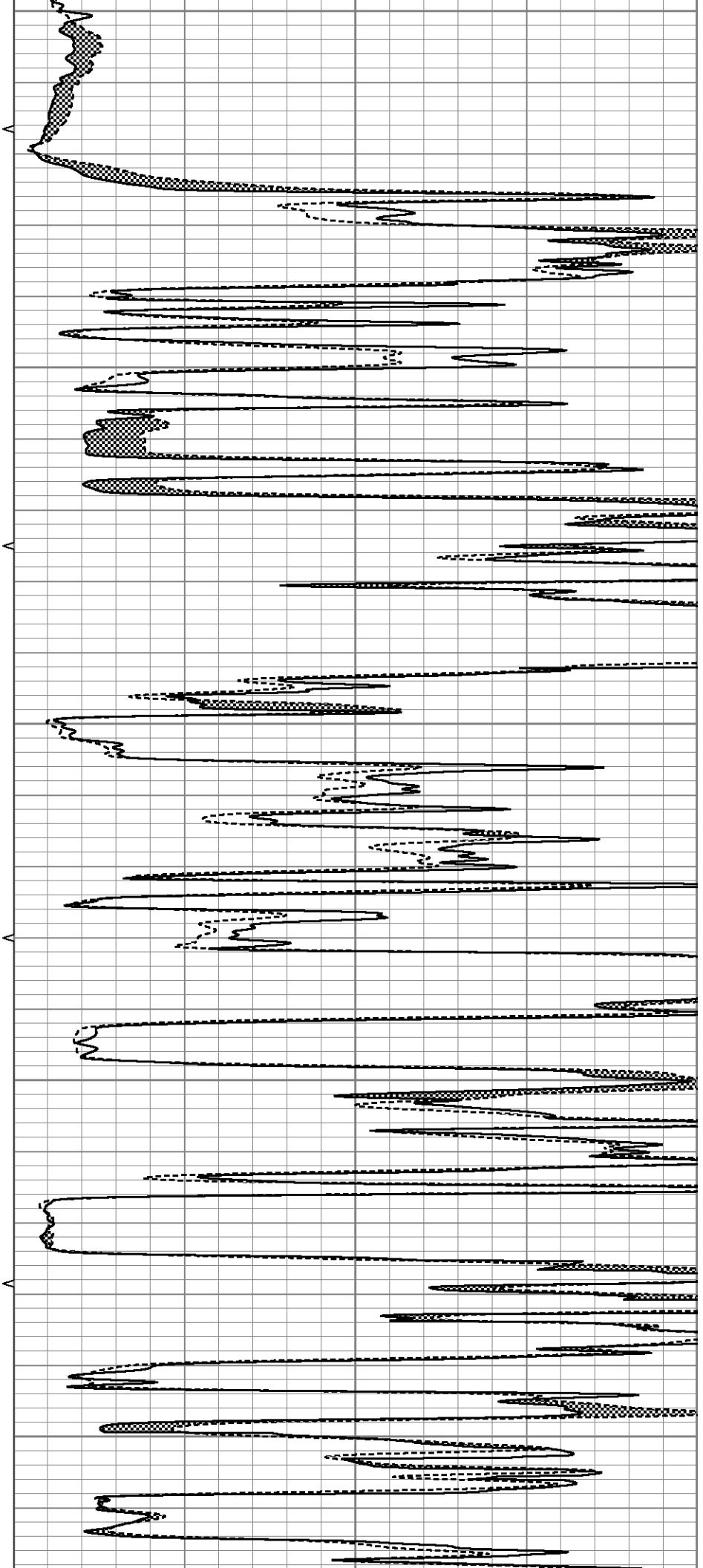
0	GR (GAPI)	150	ABHV	0	MEL20 (Ohm-m)	40
6	MELCAL (in)	16	10 (ft3)	0	MEL15 (Ohm-m)	40
			ABHV			
			0 (ft3)	10		

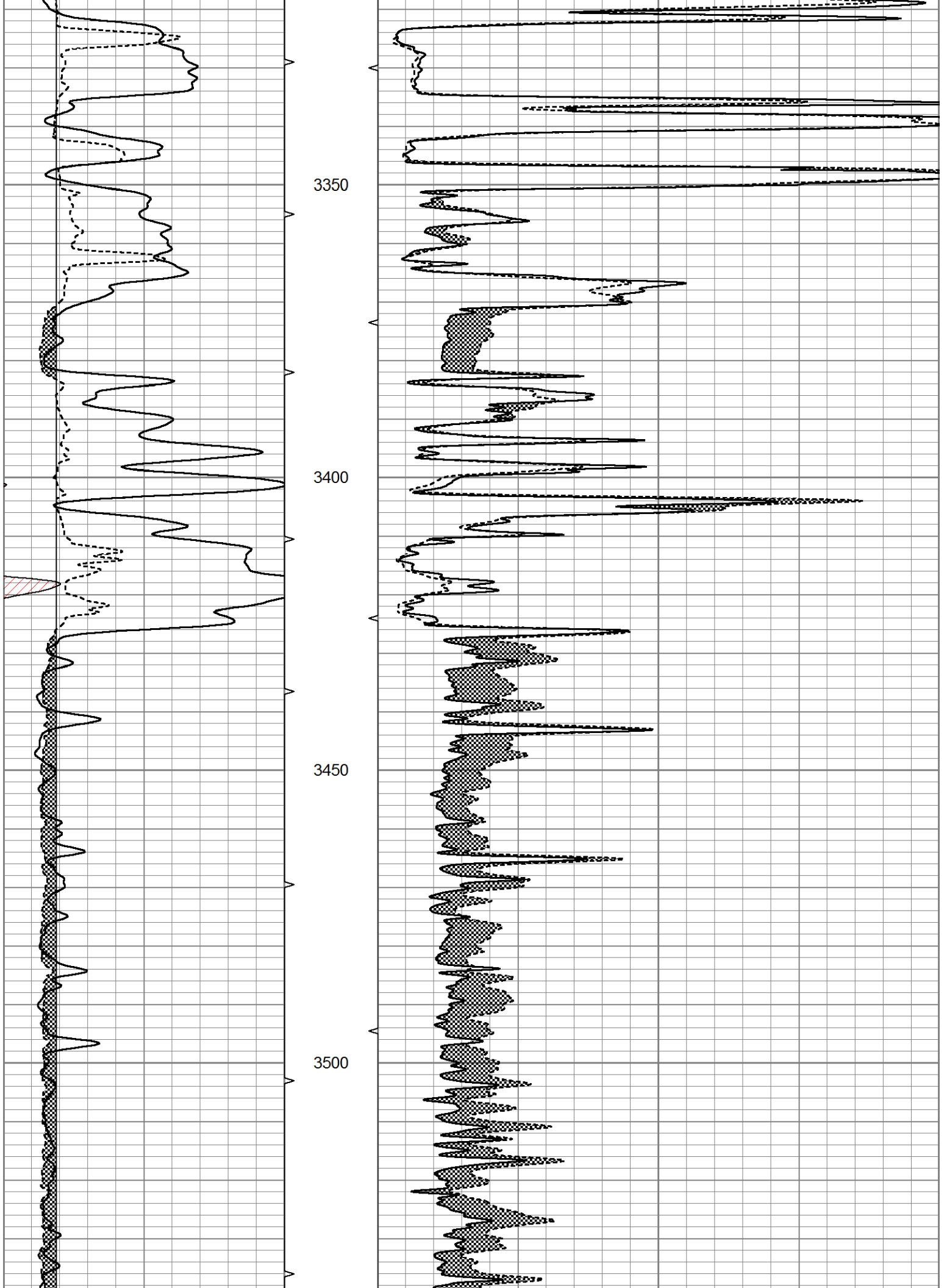


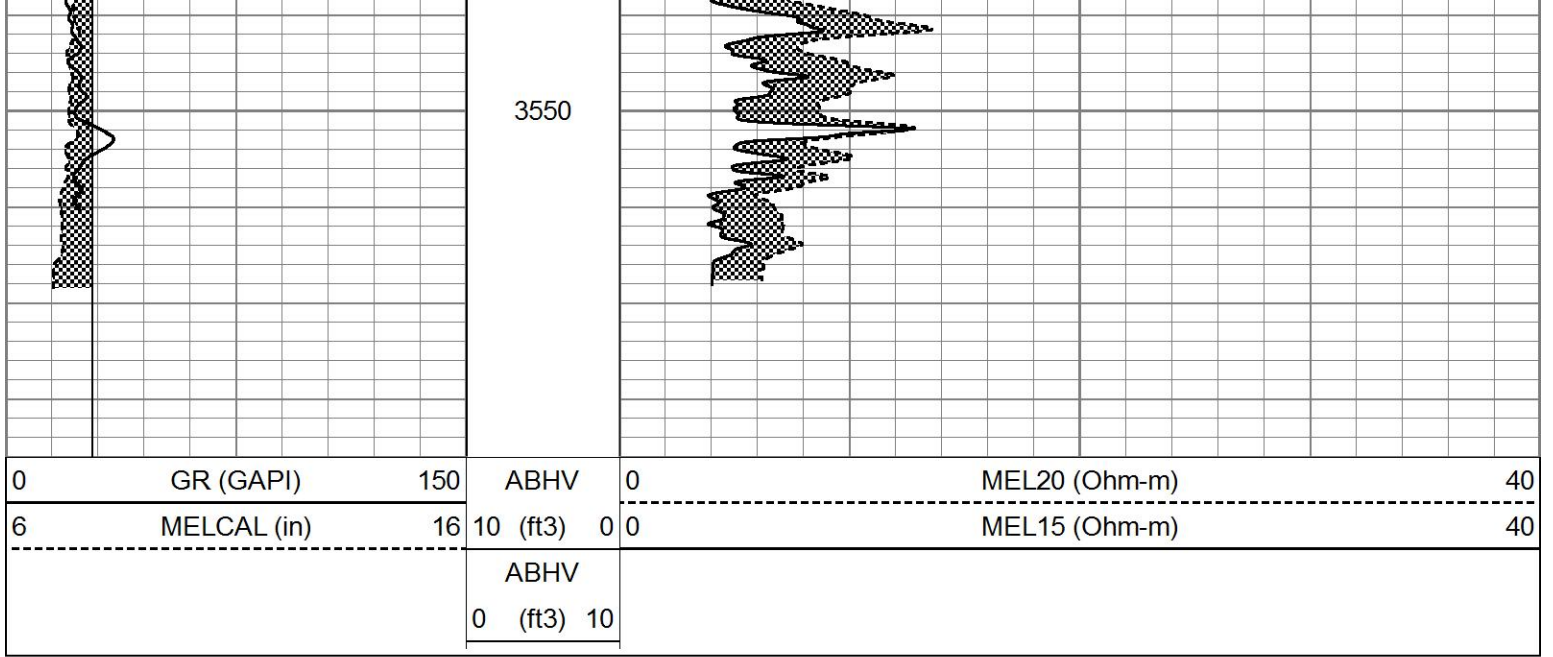




3100
3150
3200
3250
3300



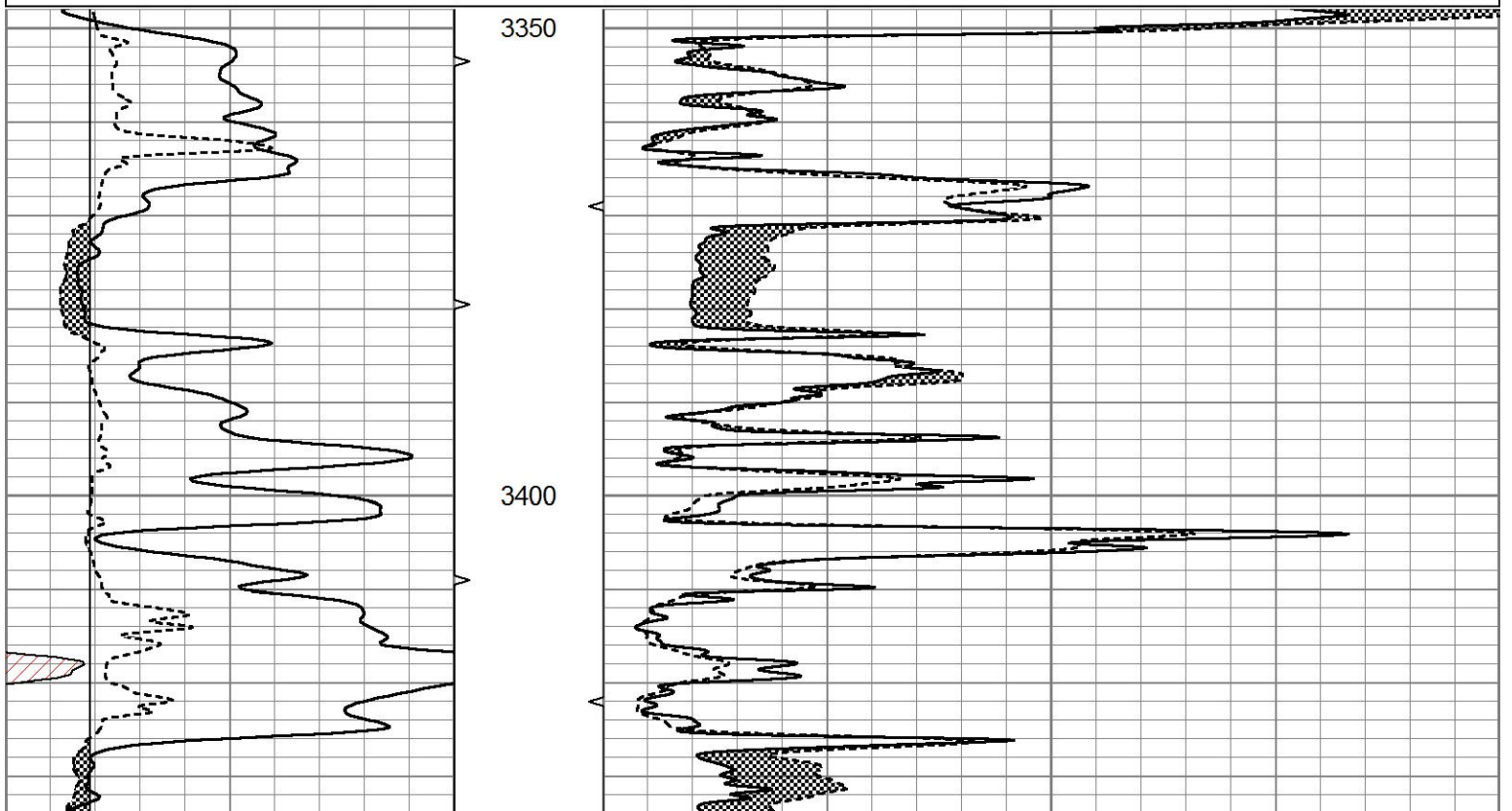


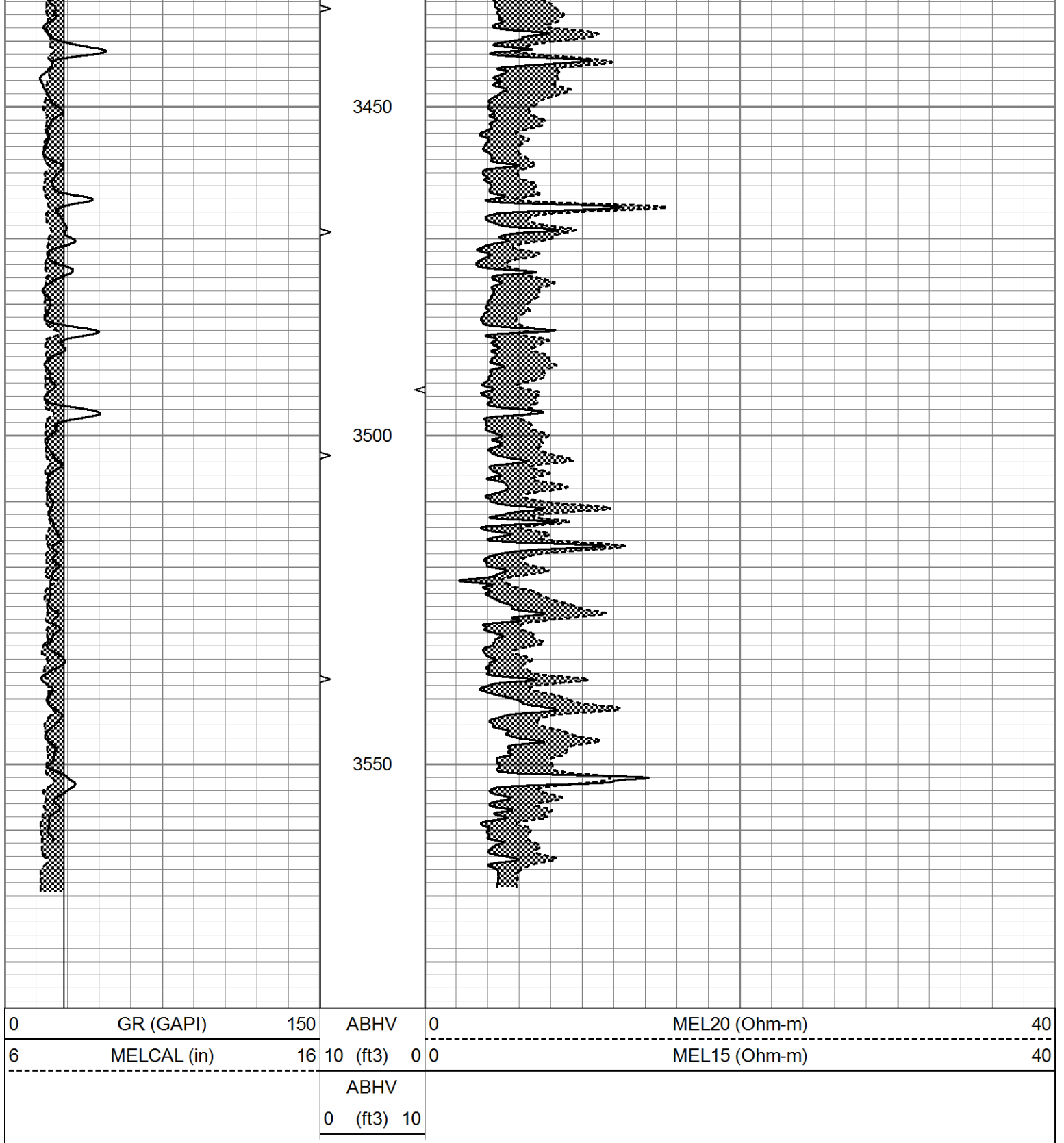


REPEAT SECTION

Database File 5263ddn.db
 Dataset Pathname pass7.3
 Presentation Format micro
 Dataset Creation Mon Mar 22 22:12:10 2021
 Charted by Depth in Feet scaled 1:240

0	GR (GAPI)	150	ABHV	0	MEL20 (Ohm-m)	40
6	MELCAL (in)	16	10 (ft3)	0	MEL15 (Ohm-m)	40
			ABHV			
			0 (ft3)	10		





Calibration Report

Database File 5263ddn.db
 Dataset Pathname pass8.2
 Dataset Creation Mon Mar 22 22:28:54 2021

MICRO Calibration Report

Serial Number: 070912
 Tool Model: ProbeN
 Performed: Fri Mar 19 15:23:22 2021

Caliper Calibration: Gain=3.448 Offset=0.828

References	Low Cal	High Cal
Readings	8.000	16.000
	2.080	4.400
1.5" Calibration:	Gain=26.000	Offset=0.500
References	Low Cal	High Cal
Readings	0.000	20.000
	0.002	1.239
2" Calibration:	Gain=52.000	Offset=-0.600
References	Low Cal	High Cal
Readings	0.000	20.000
	0.003	1.075
Gamma Ray Calibration Report		
Serial Number:	070559	
Tool Model:	OPEN_GR	
Performed:	Sat Feb 27 09:05:46 2021	
Calibrator Value:	1.0	GAPI
Background Reading:	0.0	cps
Calibrator Reading:	1.0	cps
Sensitivity:	0.3600	GAPI/cps