



**CEMENT BOND LOG  
WITH GAMMA RAY**

MIDWEST WIRELINE

Comp. Talon Group LLC  
Well Selfridge #2-11  
Field N/A  
Co. Lane  
State Kansas

Company **Talon Group LLC**  
Well **Selfridge #2-11**  
Field **N/A**  
County **Lane** State **Kansas**

Location: API #: 15-101-22645-00-00  
2395' FNL & 880' FWL  
SEC 11 TWP 18S RGE 28W  
Permanet Datum GL Elevation 2728'  
Log Measured From KB 10' Above Perm. Datum  
Drilling Measured From KB  
Other Services  
Perf  
Elevation  
K.B. 2738'  
D.F. N/A  
G.L. 2728'

Date of Service	3/9/2021			
Run Number	One			
Depth Driller or PBTID	4290'			
Depth Logger	4286'			
Bottom Log Interval	4284'			
Top Log Interval	3000'			
Open Hole Size	7.875"			
Type Fluid	Water			
Fluid Level	350'			
Fluid Density	N/A			
Max. Recorded Temperature	119 Deg F			
Max. Wellhead Pressure	00 PSI			
Wellhead Connection	Flowtee			
Estimated Cement Top	3066'			
Unit Number	P-18			
Wireline Size	5/16"			
Location	Hays			
Recorded By	T. Martin			
Witnessed By	Kyle Roby			
Tubing Record	Size	WFt	Top	Bottom
Surface Casing	8.625"	23#	00'	262'
Production Casing	4.5"	11.6#	00'	TD
Liner Record				

<<< Fold Here >>>

All interpretations are opinions based on inferences from electrical or other measurements and Midwest Wireline LLC cannot and does not guarantee the accuracy or correctness of any interpretation, and Midwest Wireline LLC will not be liable or responsible for any loss, costs, damages, or expenses incurred or sustained by anyone resulting from any interpretation made by any of our officers, agents or employees.

Comments

N/A DENOTES NOT AVAILABLE OR NON-APPLICABLE.

Dighton, E to Pawnee Rd, 1.5 N, W into

THANK YOU FOR USING MIDWEST WIRELINE LLC!

Your Midwest Wireline Crew	Tool Data - Services	Serial Number
Engineer: T. Martin Operator: M. Hiss Operator: Operator:		

Operator	Offset (ft)	Substrate	Description	Length (ft)	C.D. (in)	Weight (lb)
----------	-------------	-----------	-------------	-------------	-----------	-------------

Sensor	Offset (ft)	Schematic	Description	Length (ft)	O.D. (in)	Weight (lb)
			Cable Head-Titan_169 1 11/16" Titan Cable Head	1.03	1.69	2.00
			Centralizer-275 Probe 2 3/4" Probe Adjustable Spring Centralizer	2.88	2.75	15.00
WVF3FT	11.94		PROBE-CBL-ANALOG-CBL-A (080718) Probe 2 3/4" 3'-5' Cement Bond-Analog	8.75	2.75	100.00
WVF5FT	10.94					
WVFSYNC	7.75					
			Centralizer-275 Probe 2 3/4" Probe Adjustable Spring Centralizer	2.88	2.75	15.00
CCL	3.96					
GR	2.66	PROBE-GR/CCL-ANALOG-GR/CCL-A (104.54) 2 3/4" Gamma with CCL-Analog		2.75	60.00	
		Bullnose-PROBE Probe Go Pin Pressure Cap	0.33	1.38	1.00	

Dataset: talon\_selfridge #2-11.db: field/well/run1/pass5.1  
 Total length: 20.41 ft  
 Total weight: 193.00 lb  
 O.D.: 2.75 in

# Log Variables

DatabaseC:\ProgramData\Warrior\Data\talon\_selfridge #2-11.db  
 Dataset field/well/run1/pass5.1/\_vars\_

## Top - Bottom

BOREID in 7.875	BOTTEMP degF 119	CASEOD in 4.5	CASETHCK in 0.25	CASEWGHT lb/ft 11.6	MAXAMPL mV 0	MINAMPL mV 1	MINATTN db/ft 0.08
PERFS 0	PPT usec 0	SRFTEMP degF 60	TDEPTH ft 4286				

## Variable Description

BOREID : Borehole I.D.  
 BOTTEMP : Bottom Hole Temperature  
 CASEOD : Casing O.D.  
 CASETHCK : Casing Thickness

CASEWGHT : Casing Weight  
 MAXAMPL : Maximum Amplitude  
 MINAMPL : Minimum Amplitude  
 MINATTN : Minimum Attenuation

PERFS : Perforation Flag  
 PPT : Predicted Pipe Time  
 SRFTEMP : Surface Temperature  
 TDEPTH : Total Depth



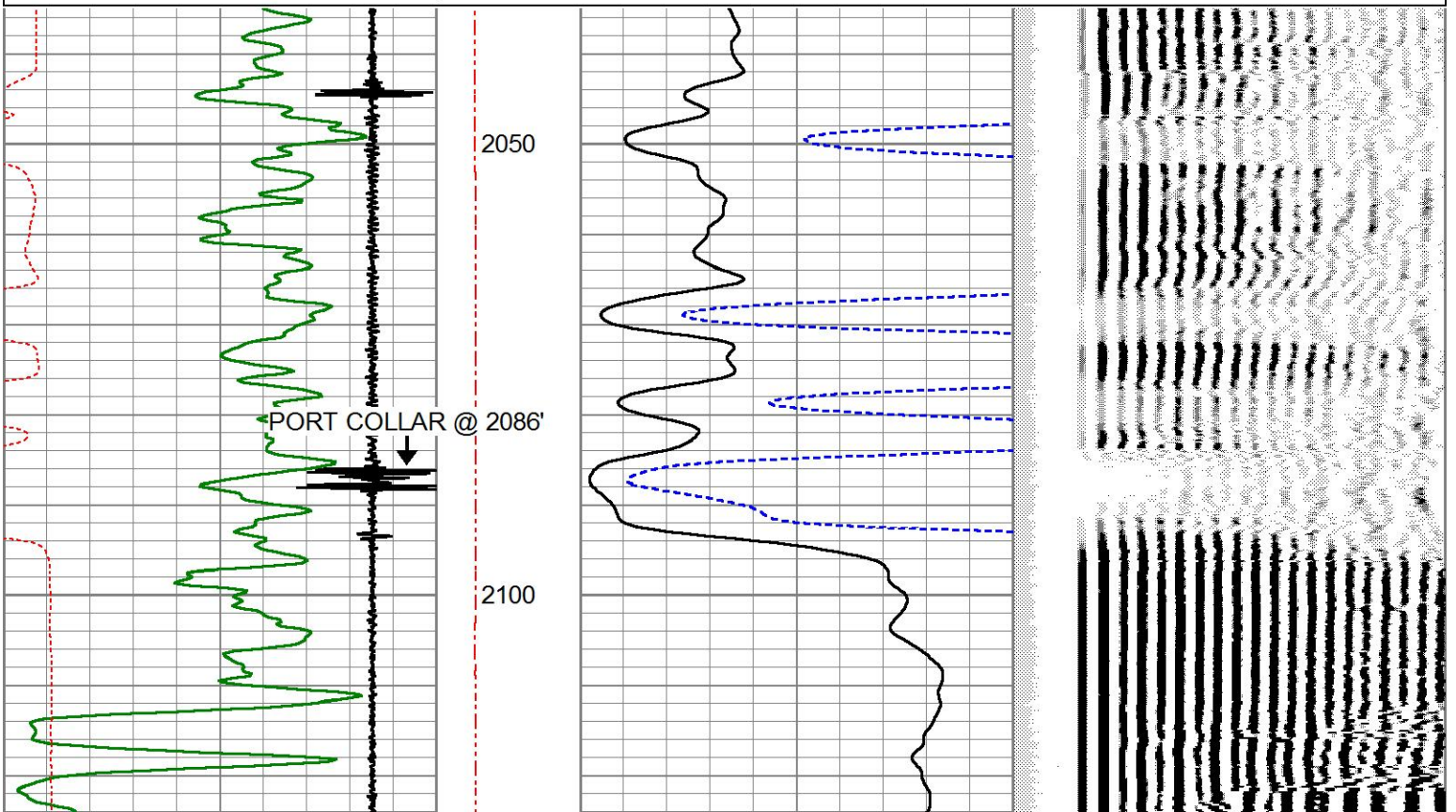
MIDWEST WIRELINE

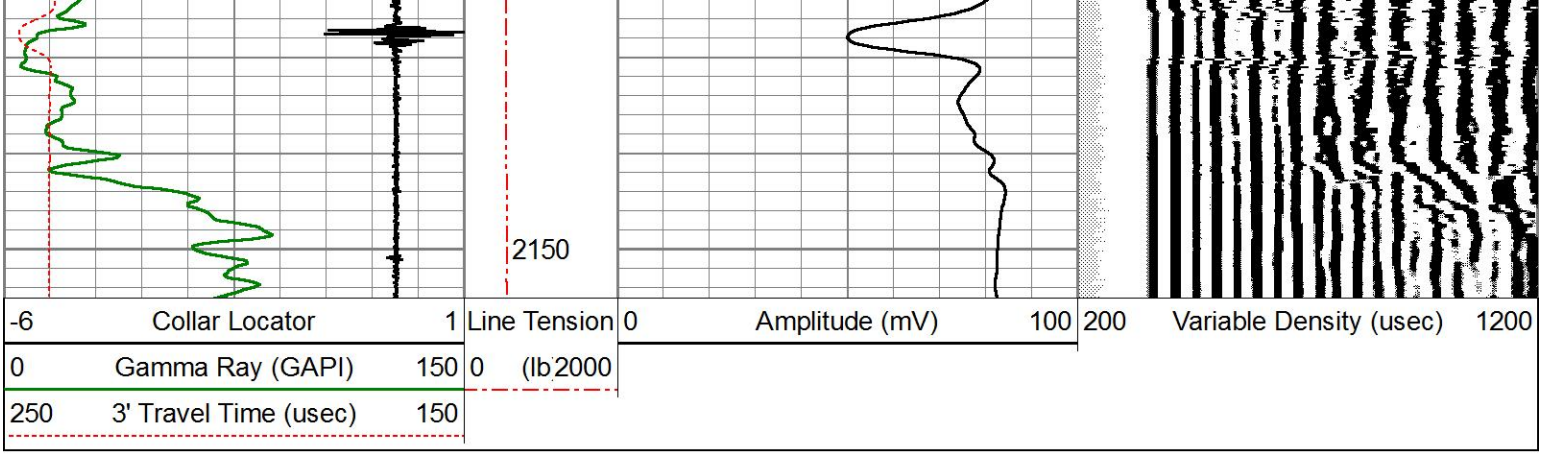
## Port Collar @ 2086'

ZERO PSI APPLIED AT SURFACE

Database File talon\_selfridge #2-11.db  
 Dataset Pathname pass6.1  
 Presentation Format pinr\_cbl  
 Dataset Creation Tue Mar 09 09:59:18 2021  
 Charted by Depth in Feet scaled 1:240

-6	Collar Locator	1	Line Tension	0	Amplitude (mV)	100	200	Variable Density (usec)	1200
0	Gamma Ray (GAPI)	150	0 (lb2000)						
250	3' Travel Time (usec)	150							



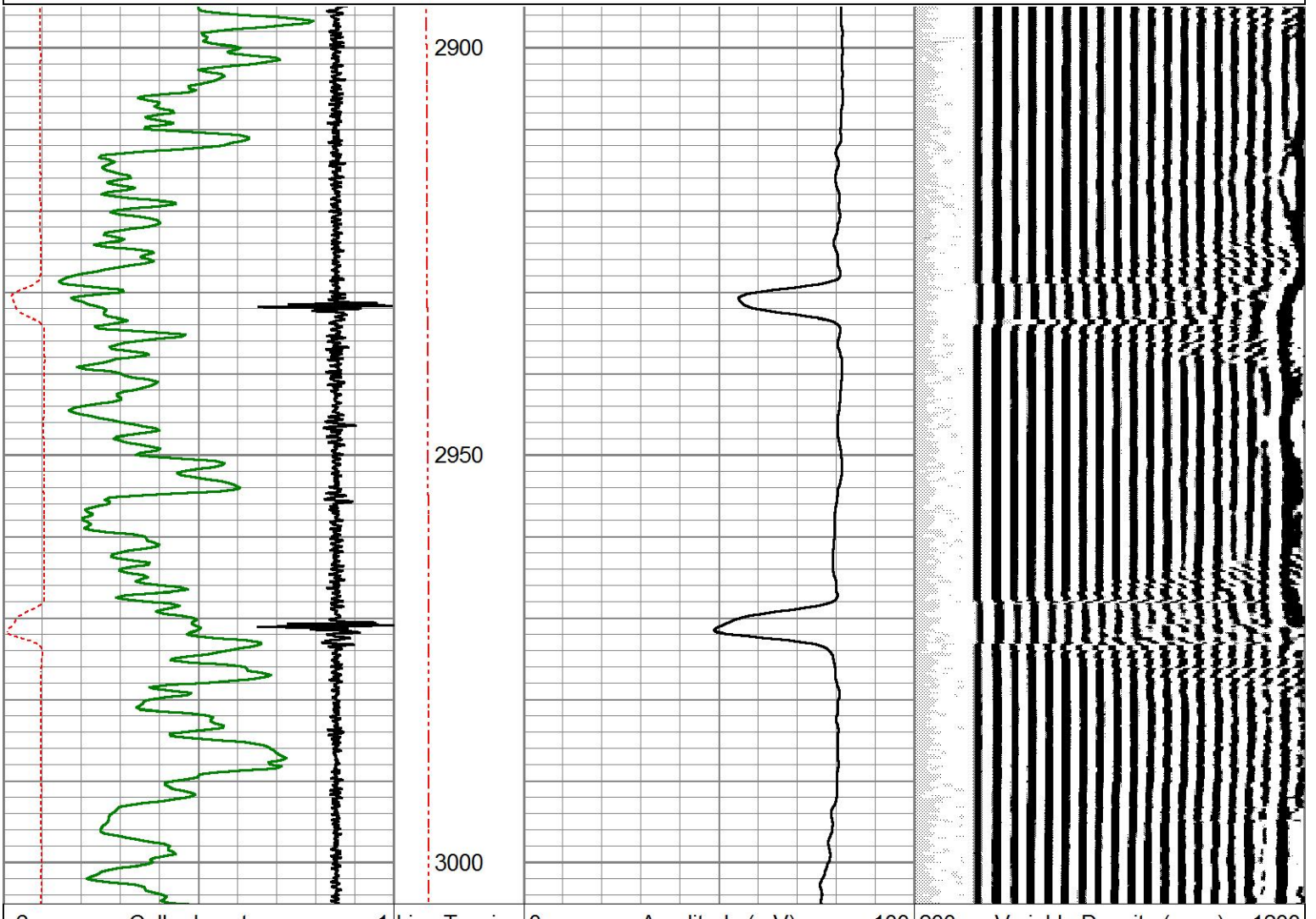
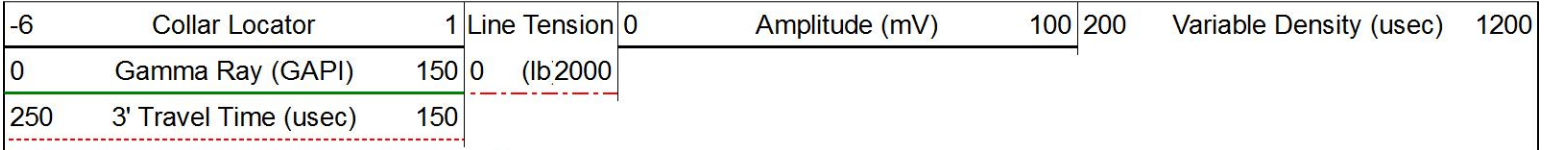


MIDWEST WIRELINE

## FREE PIPE SECTION

ZERO PSI APPLIED AT SURFACE

Database File talon\_selfridge #2-11.db  
 Dataset Pathname pass3  
 Presentation Format pinr\_cbl  
 Dataset Creation Tue Mar 09 09:15:23 2021  
 Charted by Depth in Feet scaled 1:240



-6	Collar Locator	1	Line Tension	0	Amplitude (mV)	100	200	Variable Density (usec)	1200
0	Gamma Ray (GAPI)	150	0	(lb2000)					
250	3' Travel Time (usec)	150							

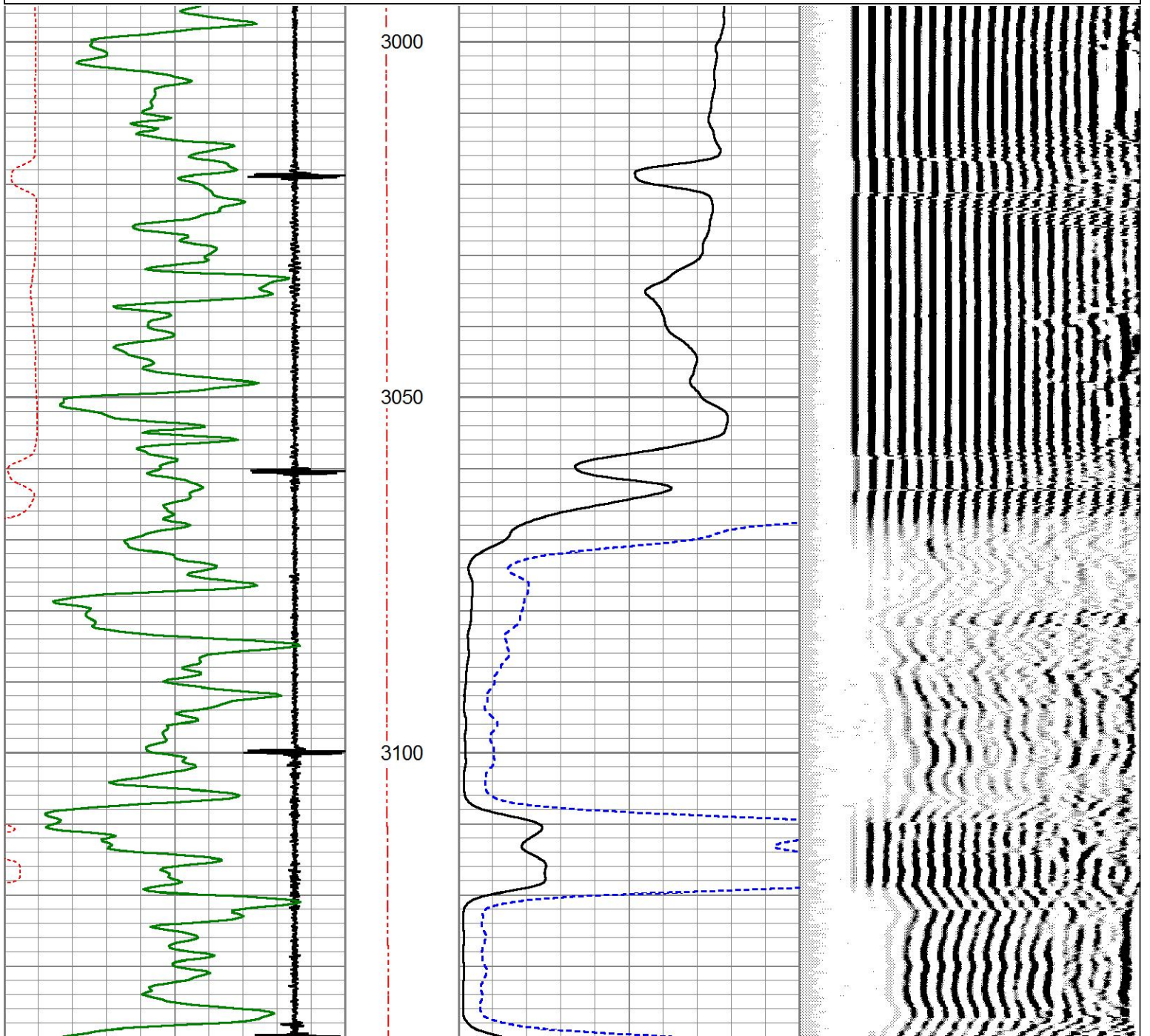


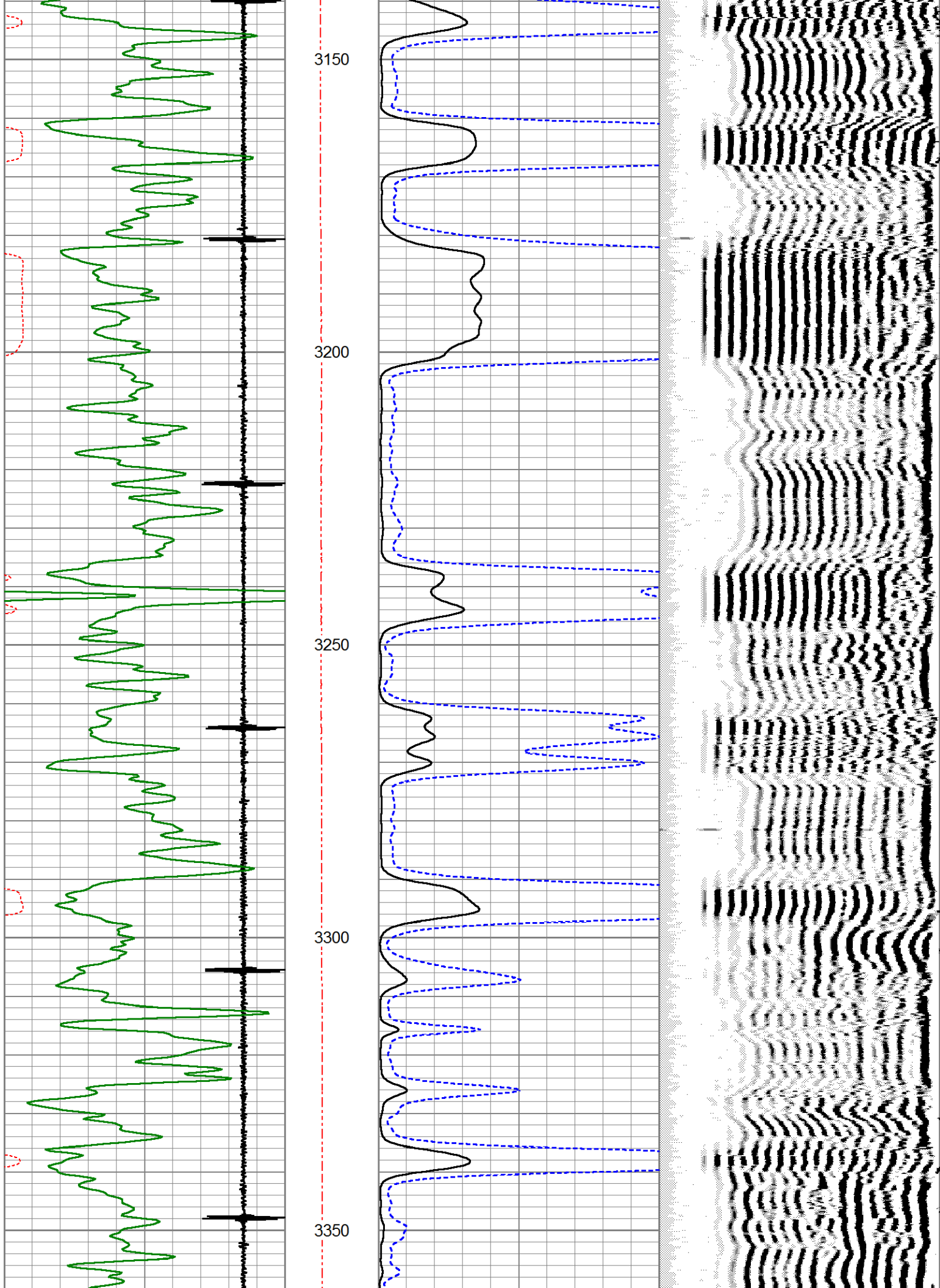
# MAIN LOG

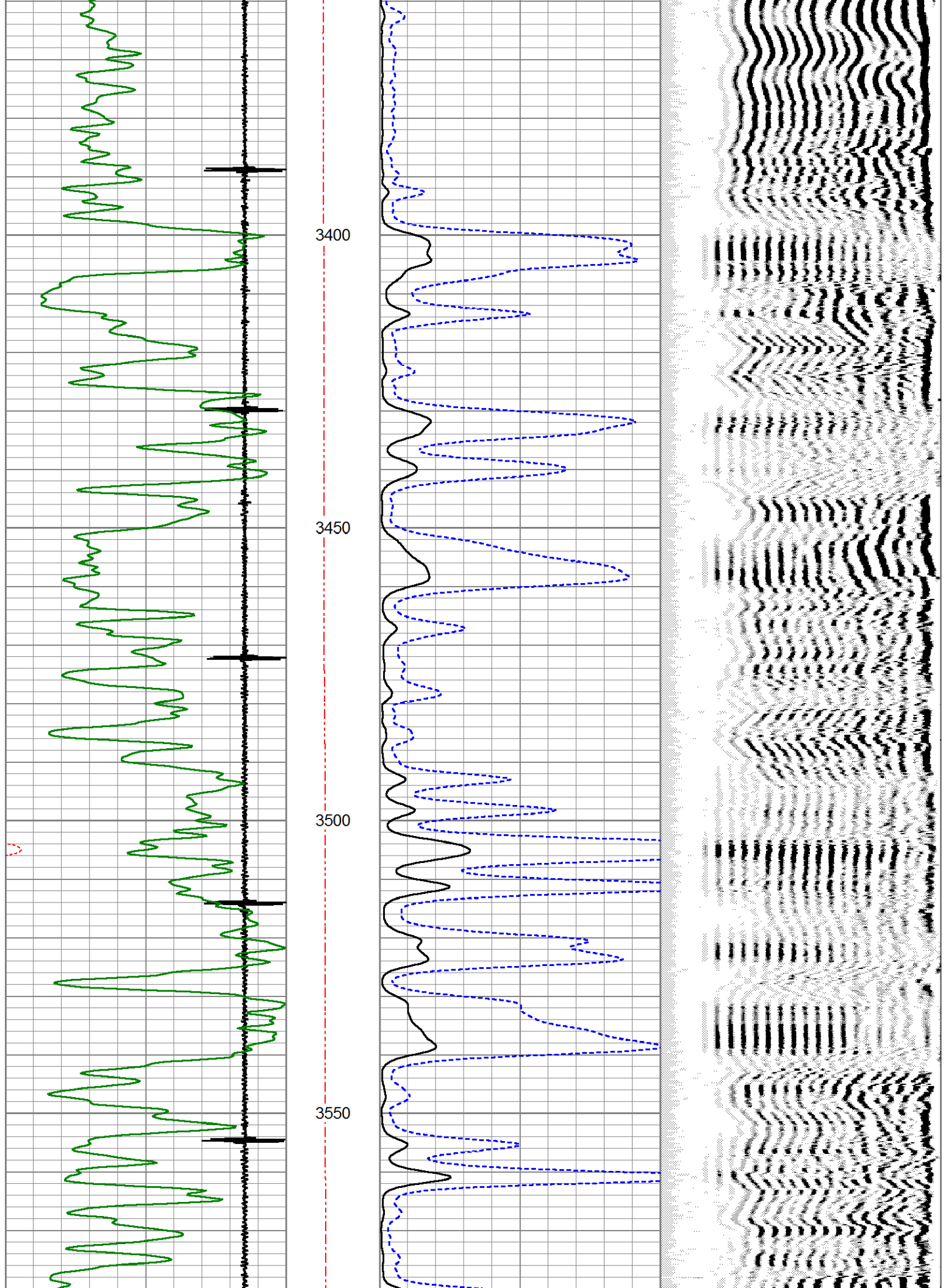
ZERO PSI APPLIED AT SURFACE

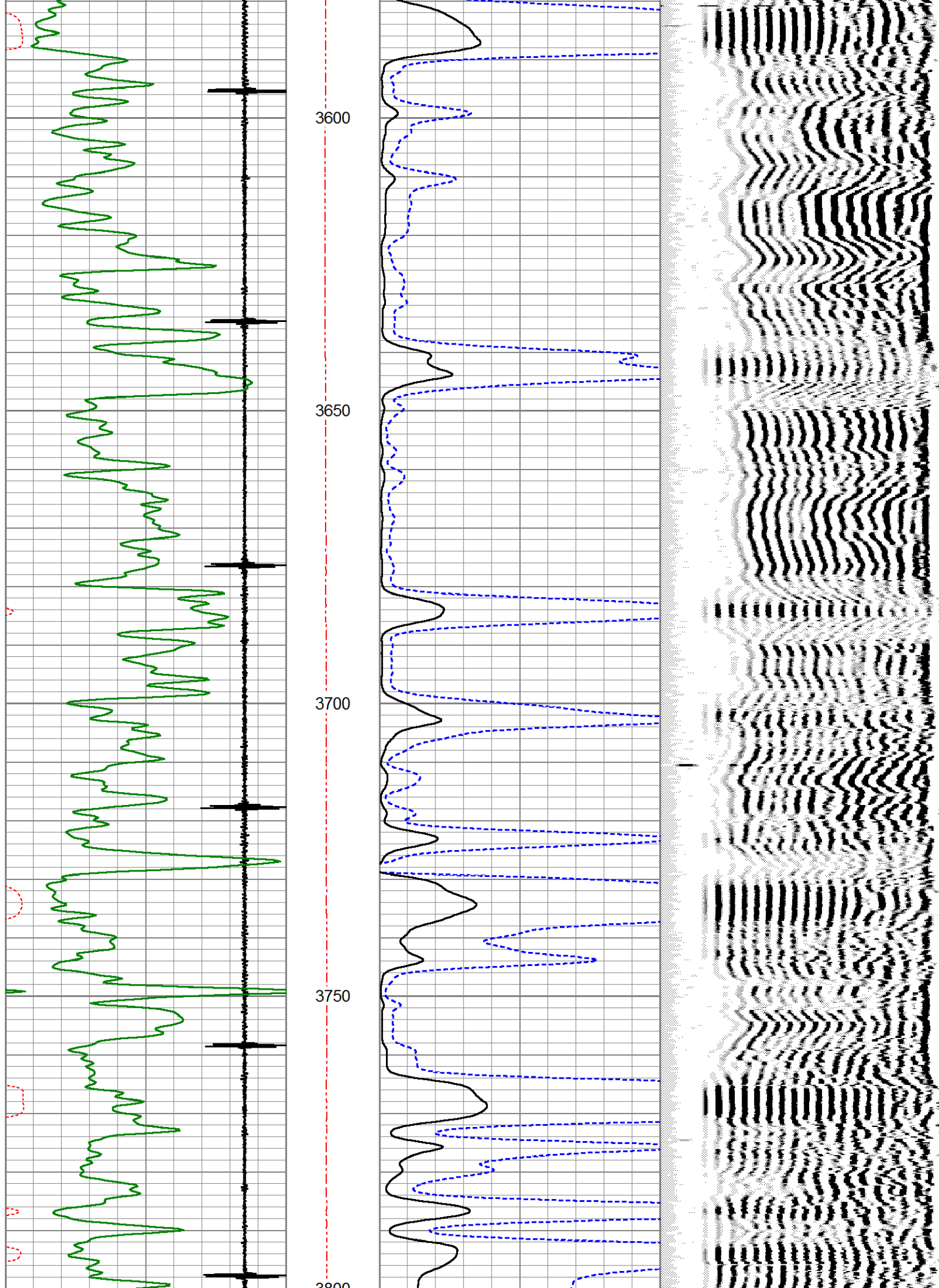
Database File talon\_selfridge #2-11.db  
 Dataset Pathname pass5.1  
 Presentation Format pinr\_cbl  
 Dataset Creation Tue Mar 09 09:53:31 2021  
 Charted by Depth in Feet scaled 1:240

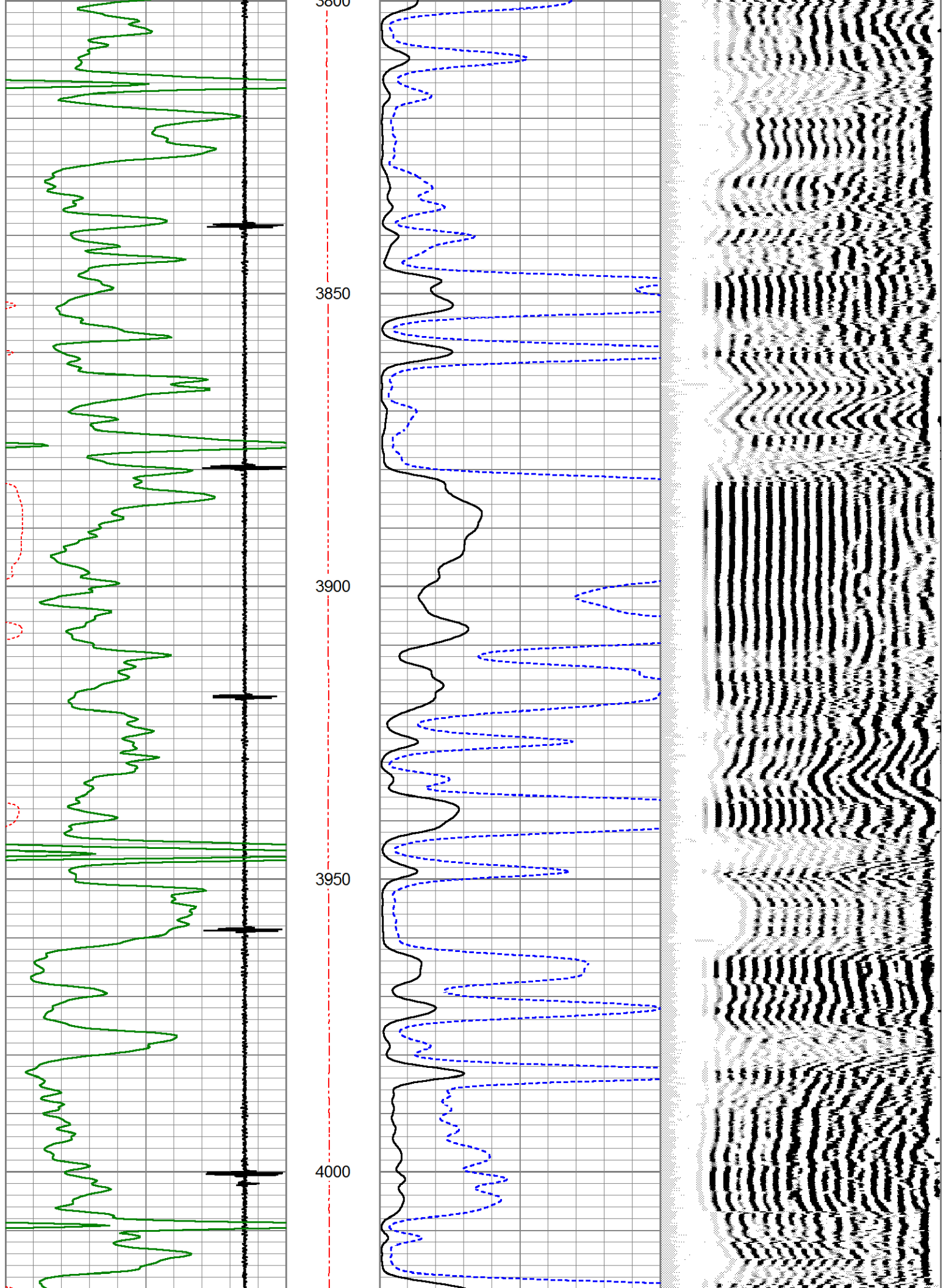
-6	Collar Locator	1	Line Tension	0	Amplitude (mV)	100	200	Variable Density (usec)	1200
0	Gamma Ray (GAPI)	150	0	(lb2000)					
250	3' Travel Time (usec)	150							

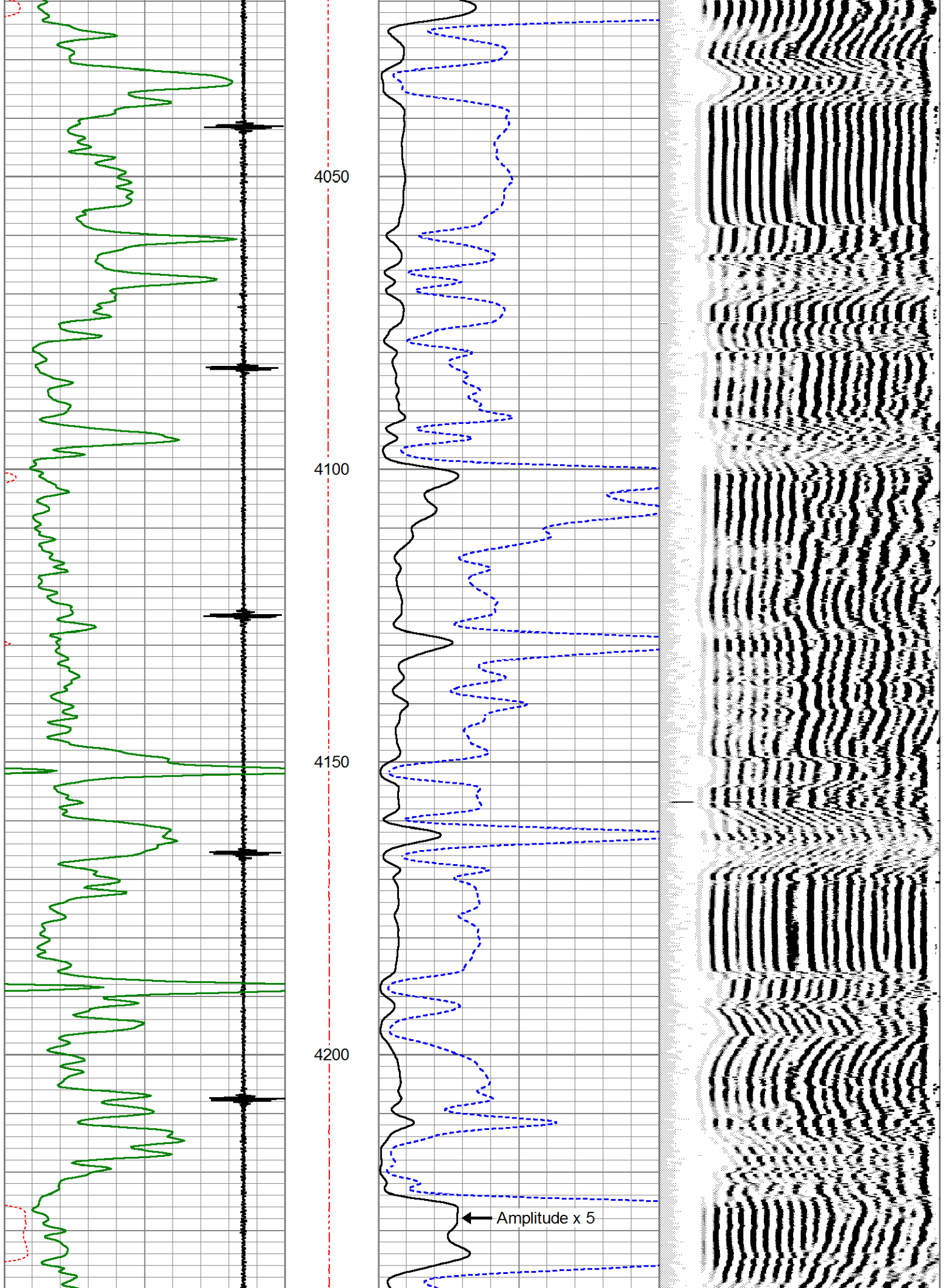


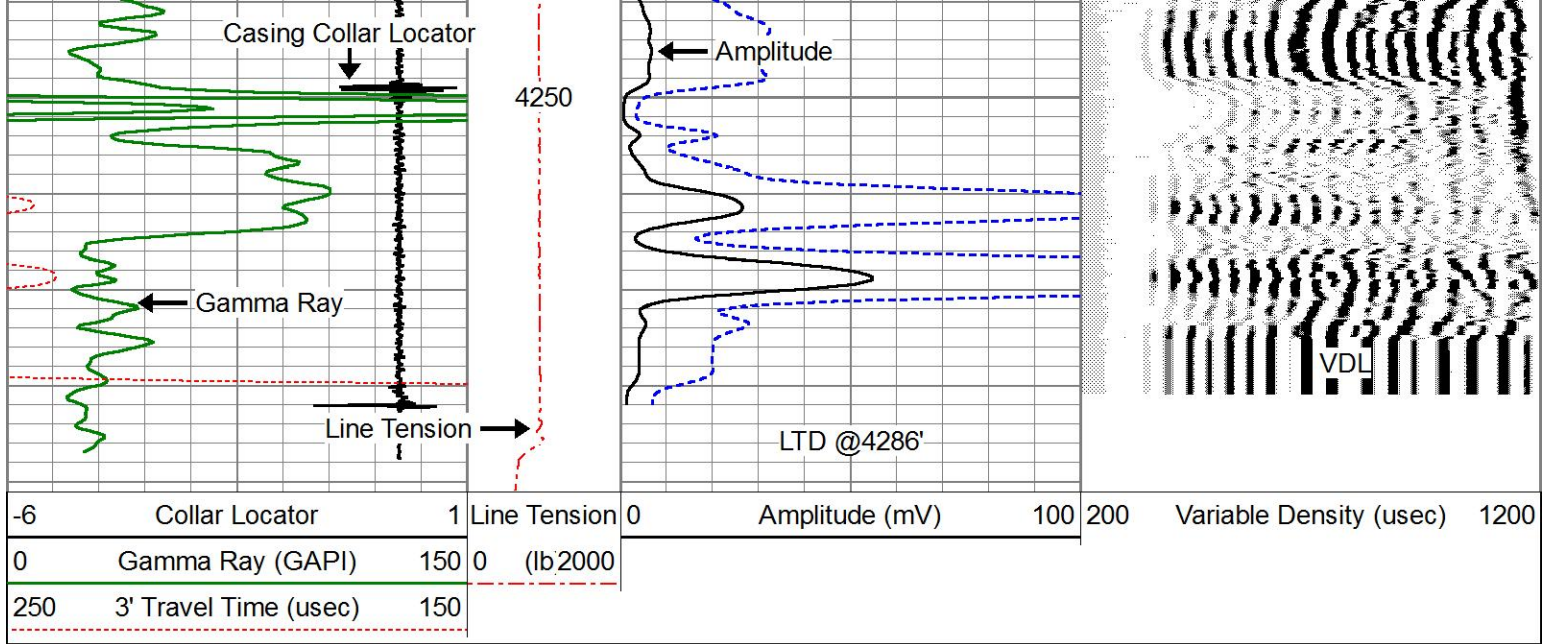










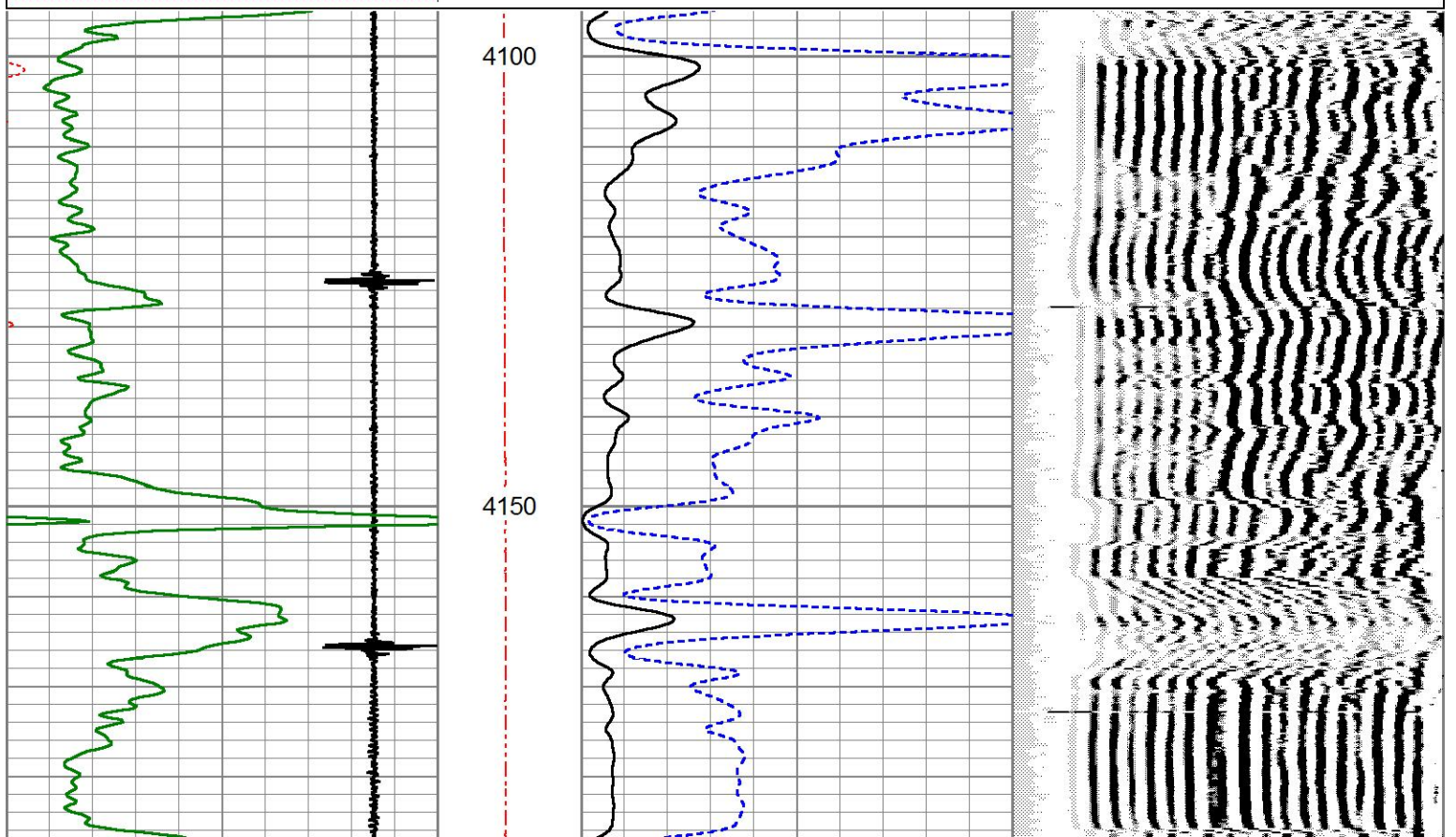
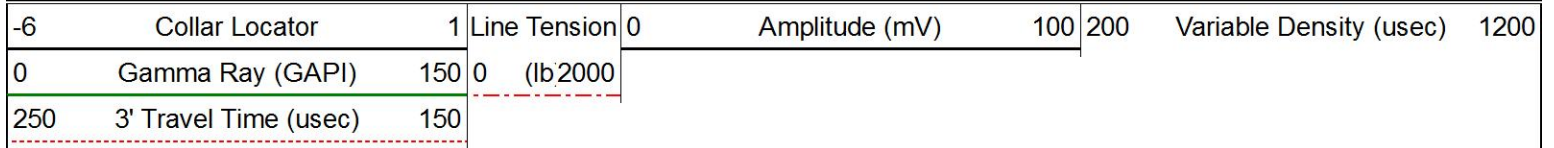


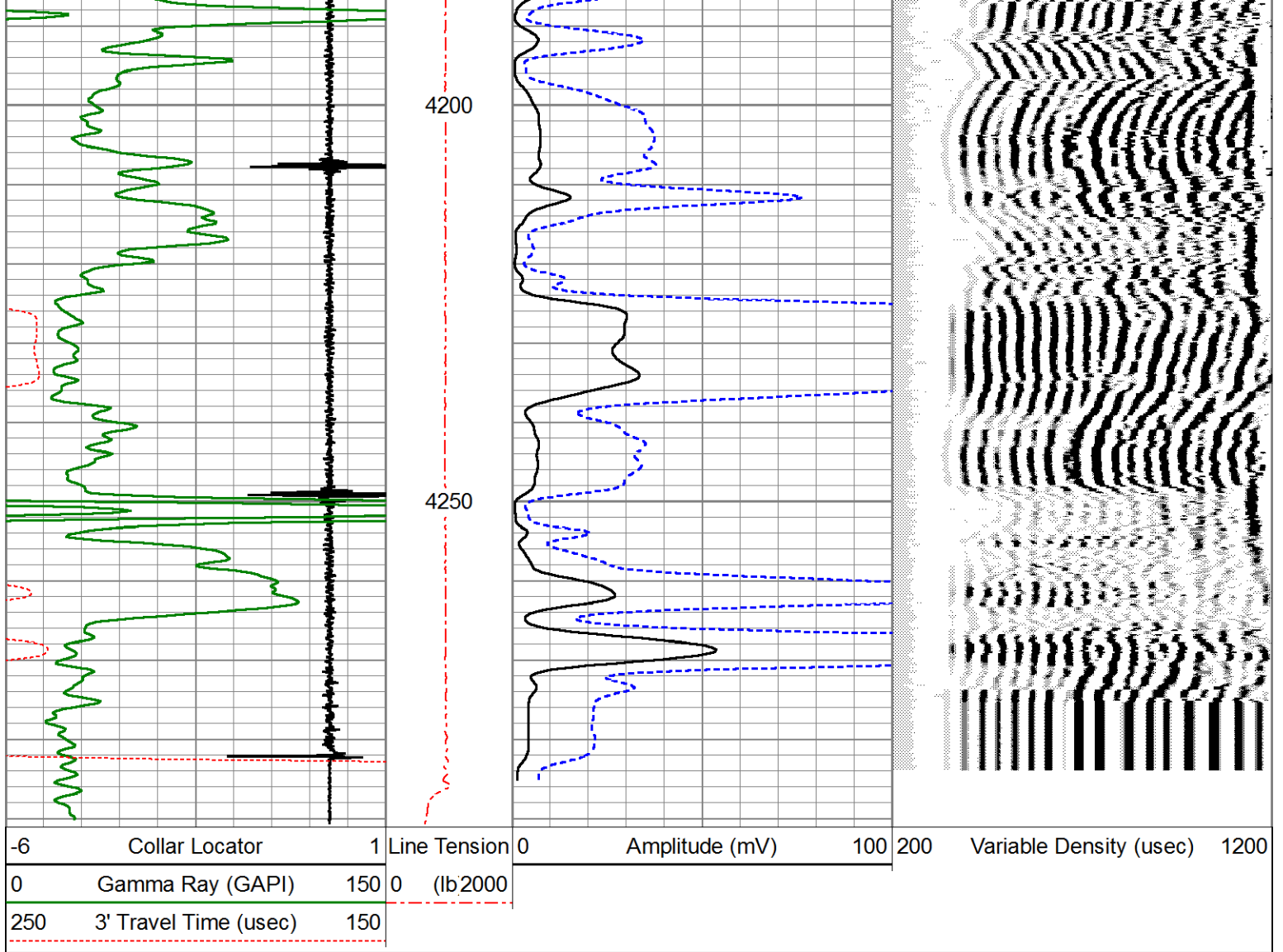
MIDWEST WIRELINE

## REPEAT SECTION

ZERO PSI APPLIED AT SURFACE

Database File talon\_selfridge #2-11.db  
 Dataset Pathname pass4.1  
 Presentation Format pinr\_cbl  
 Dataset Creation Tue Mar 09 09:43:53 2021  
 Charted by Depth in Feet scaled 1:240





### Calibration Report

Database File talon\_selfridge #2-11.db  
 Dataset Pathname pass5.1  
 Dataset Creation Tue Mar 09 09:53:31 2021

### Gamma Ray Calibration Report

Serial Number: 100420  
 Tool Model: GR/CCL-A  
 Performed: (Not Performed)

Calibrator Value: 1.0 GAPI

Background Reading: 0.0 cps  
 Calibrator Reading: 1.0 cps

Sensitivity: 1.0000 GAPI/cps

### Segmented Cement Bond Log Calibration Report

Serial Number: 080718  
 Tool Model: CBL-A

Calibration Casing Diameter: 4.500 in  
 Calibration Depth: 2962.074 ft

Master Calibration, performed Tue Mar 09 09:14:53 2021:

	Raw (v)		Calibrated (mv)		Results	
	Zero	Cal	Zero	Cal	Gain	Offset
3'	-0.107	1.994	0.700	81.196	38.304	1.400
CAL						
5'	0.069	1.993	0.700	81.196	41.828	-3.978
SUM						
S1						
S2						
S3						
S4						
S5						
S6						
S7						
S8						

Internal Reference Calibration, performed (Not Performed):

	Raw (v)		Calibrated (v)		Results	
	Zero	Cal	Zero	Cal	Gain	Offset
CAL						

Air Zero Calibration, performed Tue Mar 09 08:52:46 2021:

	Raw (v)		Calibrated (v)		Results	
	Zero		Zero		Offset	
3'	0.000		0.000		0.000	
5'	0.000		0.000		0.000	
SUM						
S1						
S2						
S3						
S4						
S5						
S6						
S7						
S8						



Company Talon Group LLC  
Well Selfridge #2-11  
Field N/A  
County Lane  
State Kansas