



MIDWEST WIRELINE

DUAL COMP POROSITY LOG

Company Talon Group, LLC
 Well Selfridge #2-11
 Field N/A
 County Lane
 State Kansas

Company Talon Group, LLC
 Well Selfridge #2-11
 Field N/A
 County Lane State Kansas

Location: API #: 15-101-22645-00-00
 2395' FNL & 880' FWL
 SEC 11 TWP 18S RGE 28W
 Permanent Datum Ground Level Elevation 2728'
 Log Measured From Kelly Bushing
 Drilling Measured From Kelly Bushing
 Other Services
 DIL/MEL
 K.B. 2738'
 D.F. N/A
 G.L. 2728'

Date	2/4/2021						
Run Number	One						
Type Log	CNL/CDL						
Depth Driller	4640'						
Depth Logger	4642'						
Bottom Logged Interval	4621'						
Top Logged Interval	3600'						
Type Fluid In Hole	Chemical						
Salinity, PPM CL	3300						
Density	9.3						
Level	Full						
Max. Rec. Temp. F	122						
Operating Rig Time	4 Hours						
Equipment -- Location	P-24 HAYS						
Recorded By	D. Schmidt						
Witnessed By	Vern Schrag						
Borehole Record							
Run No.	Bit	From	To	Size	Wgt.	From	To
One	12.25"	0'	262'	8.625"	23#	0'	262'
Two	7.875"	262'					
Casing Record							

<<< Fold Here >>>

All interpretations are opinions based on inferences from electrical or other measurements and Midwest Wireline Services, LLC cannot and does not guarantee the accuracy or correctness of any interpretation, and Midwest Wireline Services, LLC will not be liable or responsible for any loss, costs, damages, or expenses incurred or sustained by anyone resulting from any interpretation made by any of our officers, agents or employees.

Comments

N/A DENOTES NOT AVAILABLE OR NON-APPLICABLE.

Dighton,
 East to Pawnee Rd,
 1 1/2 North, West into about 3/4 mile

Log Measured From: Kelly Bushing 10 Ft. Above Permanent Datum

THANK YOU FOR USING MIDWEST WIRELINE LLC
 785-625-3858

Your Midwest Wireline Crew

Engineer: D. Schmidt
 Operator:
 Operator:
 Operator:

This Log Record Was Witnessed By

Primary Witness: Vern Schrag
 Secondary Witness:
 Secondary Witness:
 Secondary Witness:

Sensor	Offset (ft)	Schematic	Description	Length (ft)	O.D. (in)	Weight (lb)
GR	33.00		GR-M&W (233-M&W)	3.00	3.50	50.00
CNLSC CNSSC	29.90 29.15		CNT-M&W (207-MW)	5.50	3.50	100.00
LSD DCAL SSD	20.85 20.83 20.35		CDL-M&W (817-947)	8.50	4.00	250.00
RLL3F RLL3	15.80 15.80		DIL-PSI HIGH TEMP (952-828)	18.50	3.50	220.00
CILD	8.00		CILD	8.00	4.00	200.00
CILM	4.70		CILM	4.70	4.00	120.00
SP	0.20		SP	0.20	4.00	40.00

Dataset: talon_selfridge 2-11.db: field/well/stack/pass4.1
 Total length: 35.50 ft
 Total weight: 620.00 lb
 O.D.: 4.00 in

Log Variables

DatabaseC:\ProgramData\Warrior\Data\talon_selfridge 2-11.db
 Dataset field/well/stack/pass4.1/_vars_

Top - Bottom

A	BOREID in	BOTTEMP degF	CASEOD in	CASETHCK in	FLUIDDEN g/cc	M	MATRXDEN g/cc
1	7.875	100	4.5	0	1	2	2.71
NPORSEL	PERFS	SNDERR mmho/m	SNDERRM mmho/m	SPSHIFT mV	SRFTEMP degF	SZCOR	TDEPTH ft
Limestone	0	0	0	655	0	Off	0

Variable Description

A : Cement Factor (a)
 BOREID : Borehole I.D.
 BOTTEMP : Bottom Hole Temperature
 CASEOD : Casing O.D.
 CASETHCK : Casing Thickness
 FLUIDDEN : Fluid Density
 M : Cement Exp (m)
 MATRXDEN : Matrix Density

NPORSEL : Neutron Porosity Curve Select
 PERFS : Perforation Flag
 SNDERR : Deep Sonde Error Correction
 SNDERRM : Medium Sonde Error Correction
 SPSHIFT : S.P. Baseline Offset
 SRFTEMP : Surface Temperature
 SZCOR : CN Size Cor. ?
 TDEPTH : Total Depth



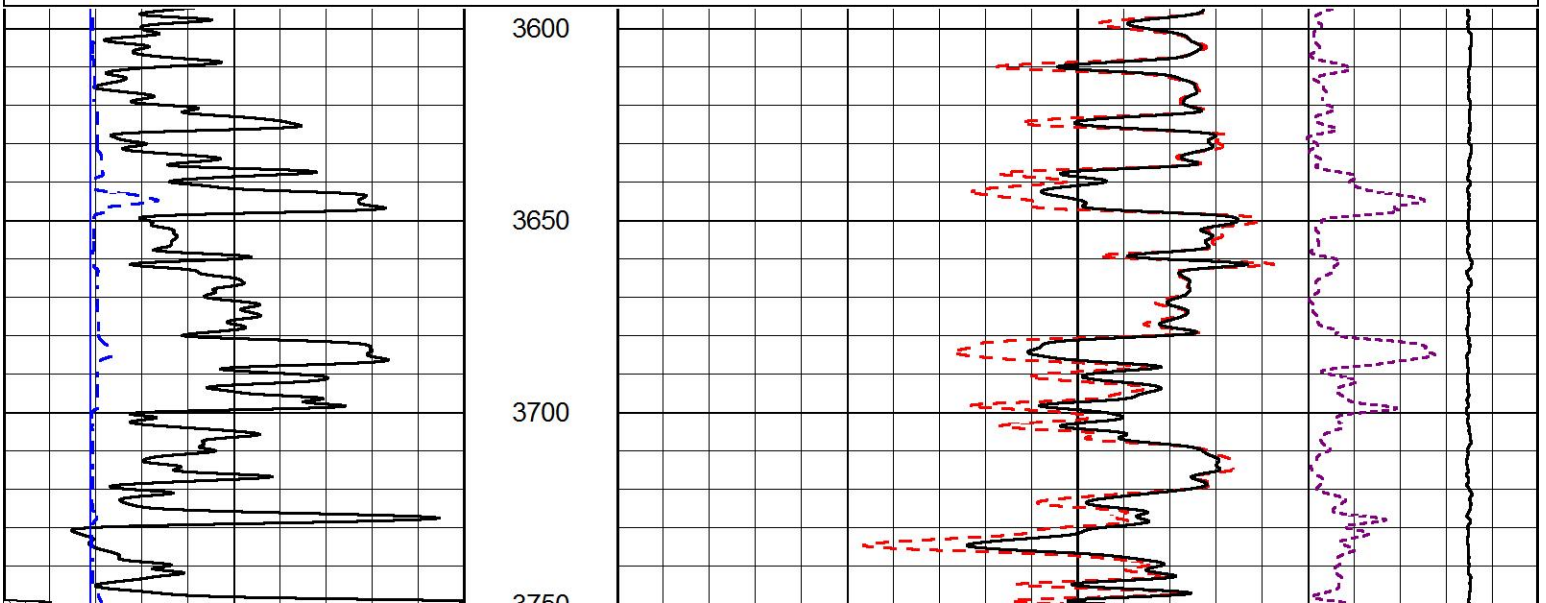
MIDWEST WIRELINE

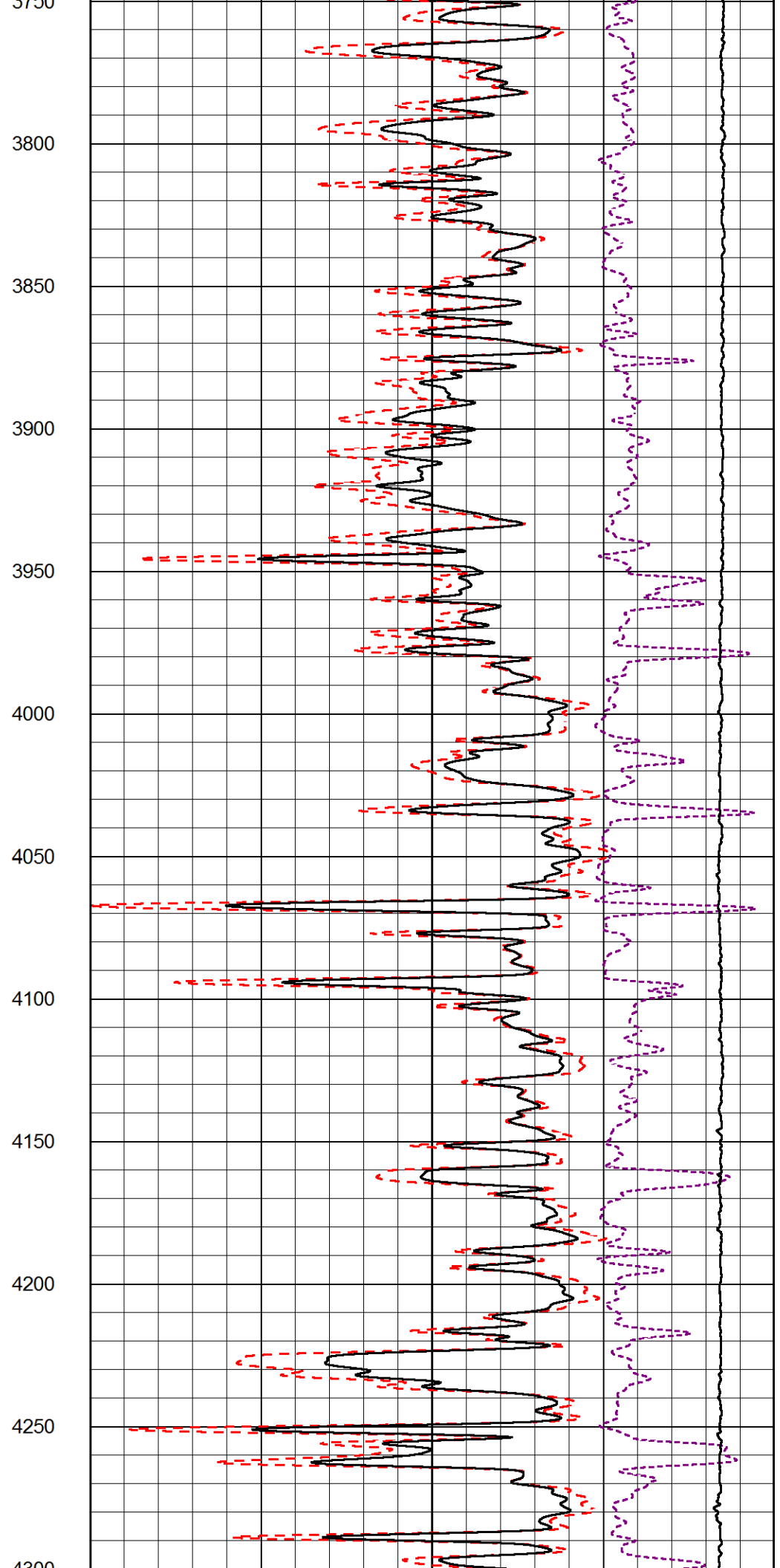
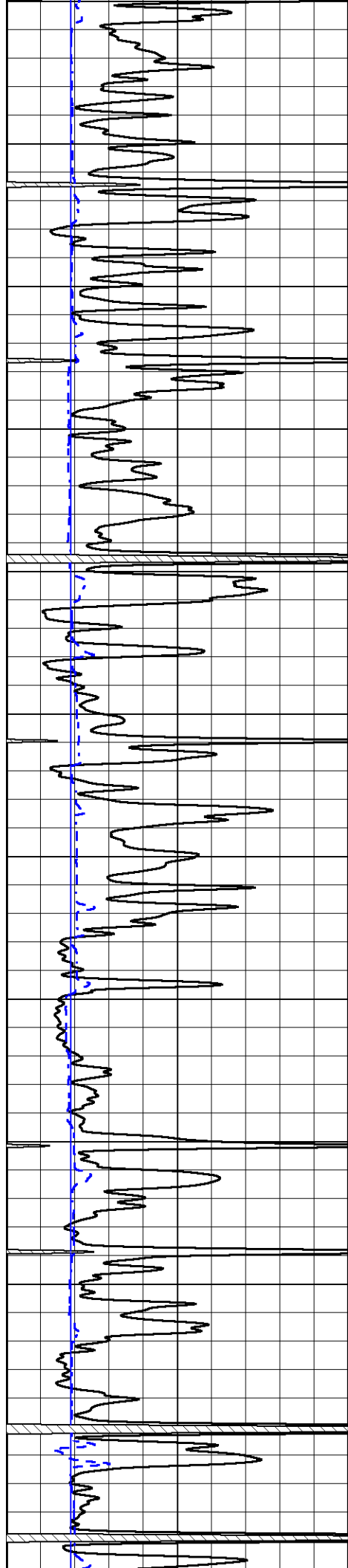
MAIN PASS

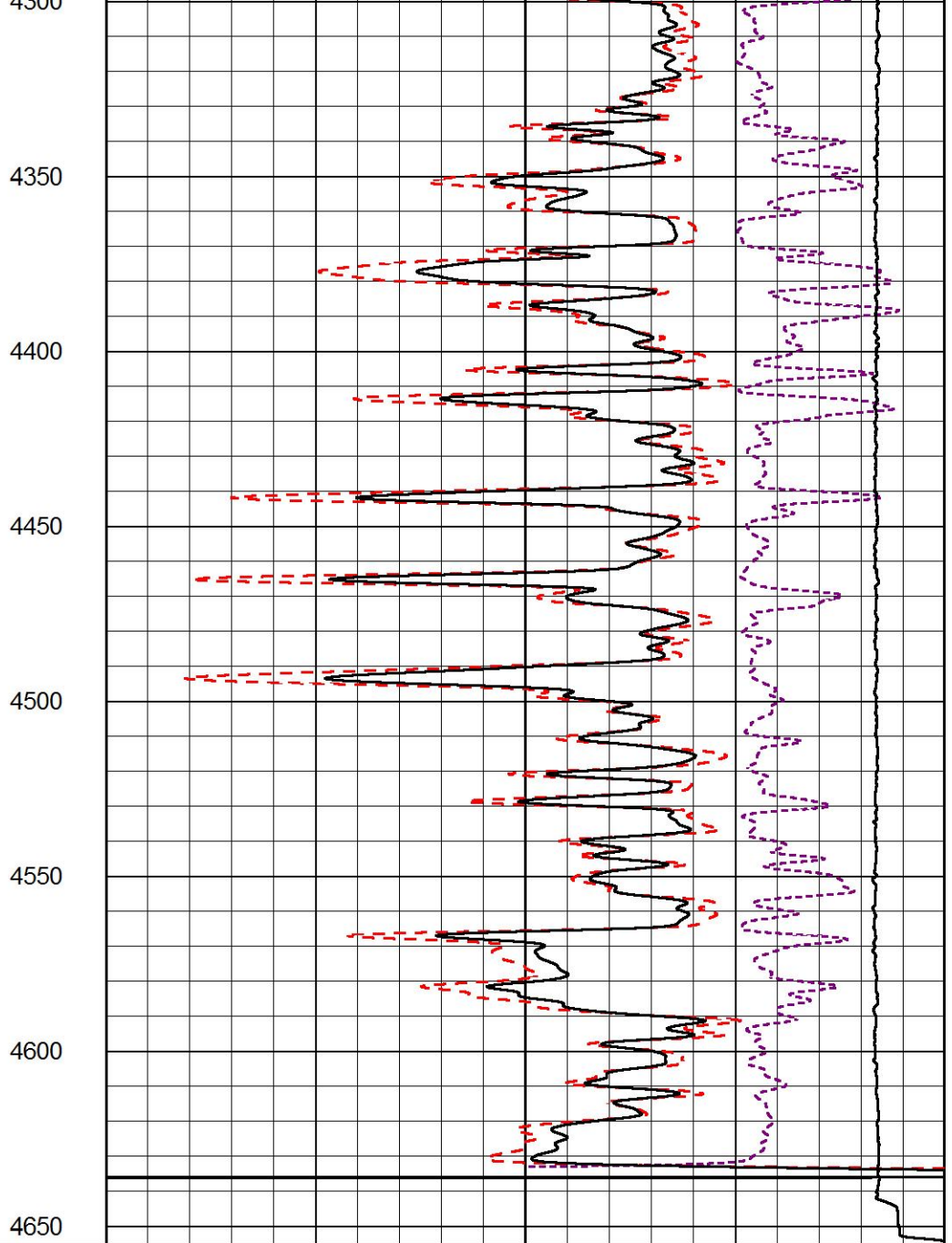
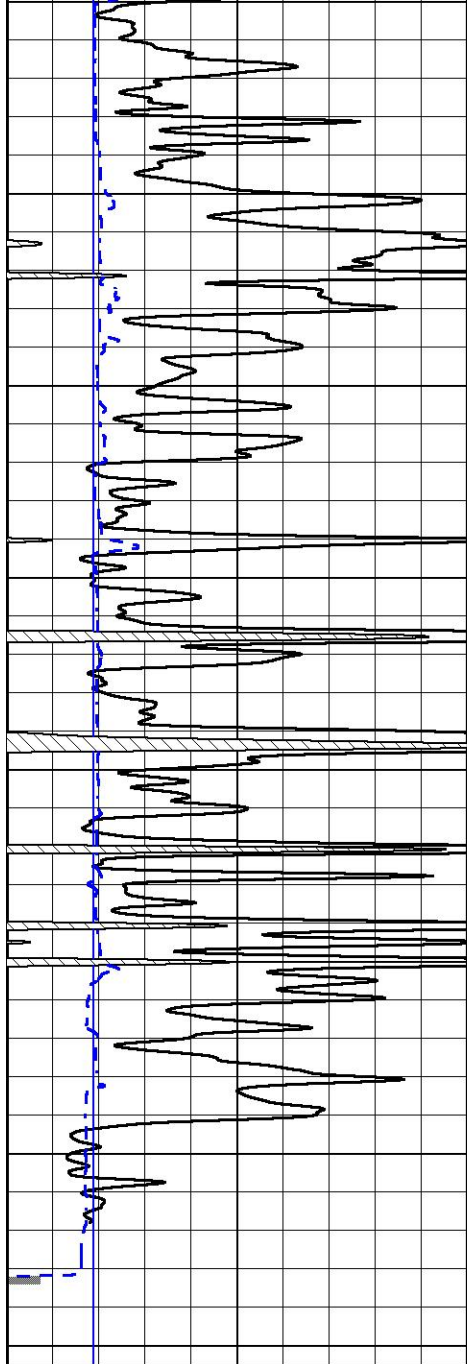
Database File talon_selfridge 2-11.db
 Dataset Pathname stack/pass4.1
 Presentation Format _cdl
 Dataset Creation Thu Feb 04 07:41:13 2021
 Charted by Depth in Feet scaled 1:600

0	GAMMA RAY (GAPI)	150
6	DCAL (in)	16

COMPENSATED DENSITY (2.65 MA)	
30	(pu) -10
2	BULK DENSITY (g/cc) 3
15000	LINE TENSION (lb) 0
-0.25	CORRECTION (g/cc) 0.25







0 GAMMA RAY (GAPI) 150
 6 DCAL (in) 16

COMPENSATED DENSITY
 (2.65 MA)

30 (pu) -10

2 BULK DENSITY (g/cc) 3

15000 LINE TENSION (lb) 0

-0.25 CORRECTION (g/cc) 0.25



MAIN PASS

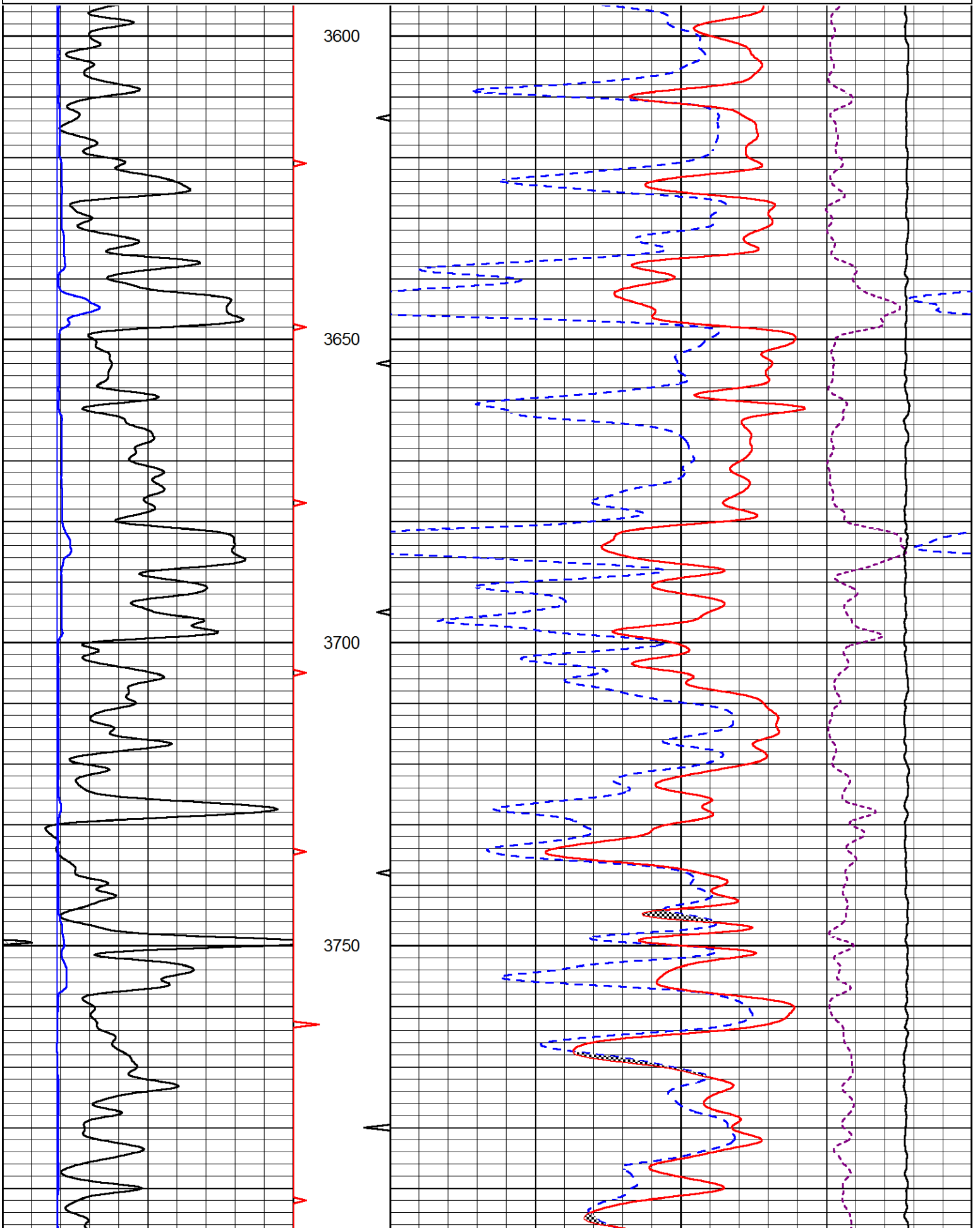
Database File talon_selfridge 2-11.db
 Dataset Pathname stack/pass4.1
 Presentation Format _CNDLS~1
 Dataset Creation Thu Feb 04 07:41:13 2021
 Charted by Depth in Feet scaled 1:240

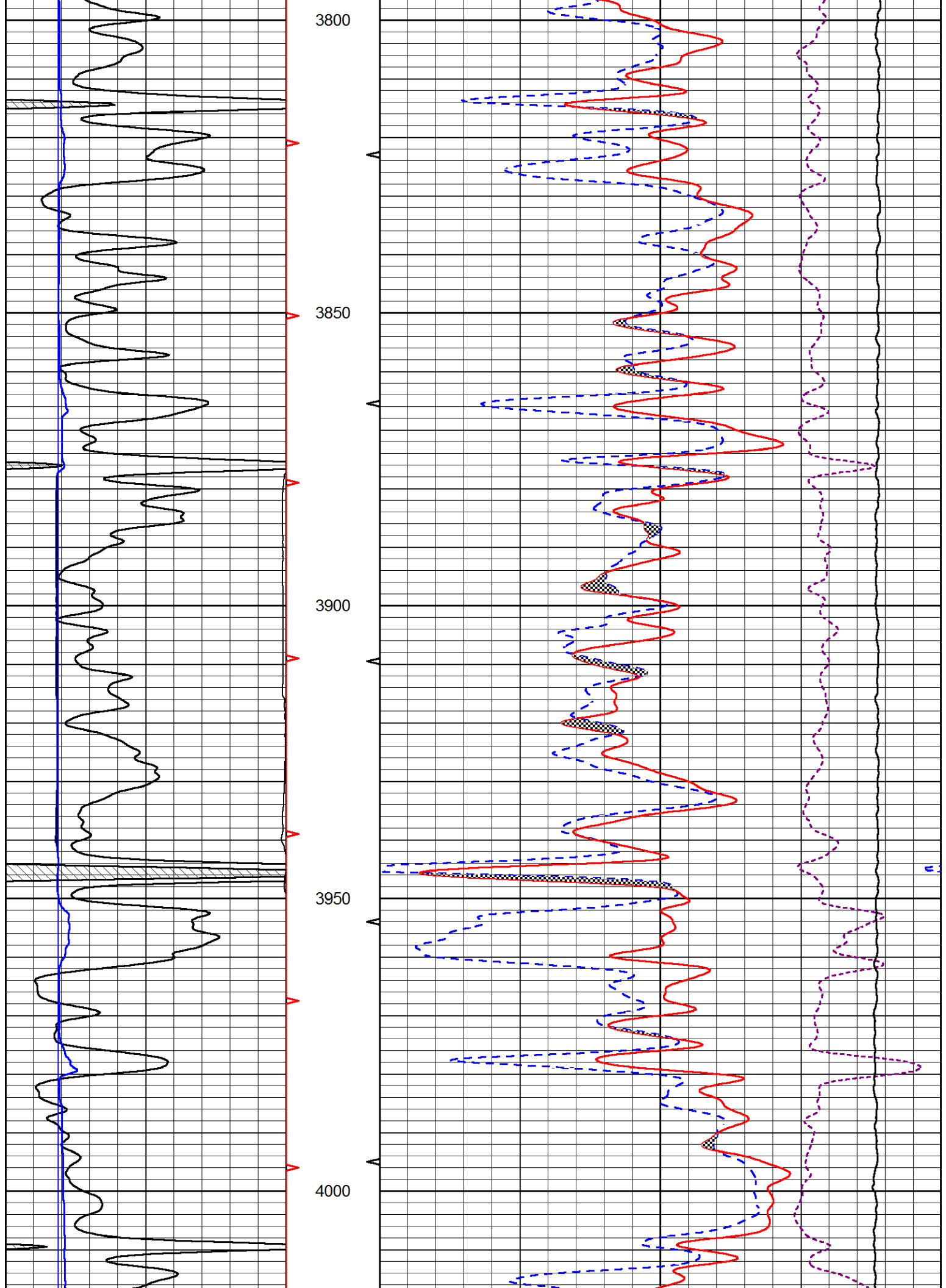
0 GAMMA RAY (GAPI) 150 30 CNPOR (pu) 10

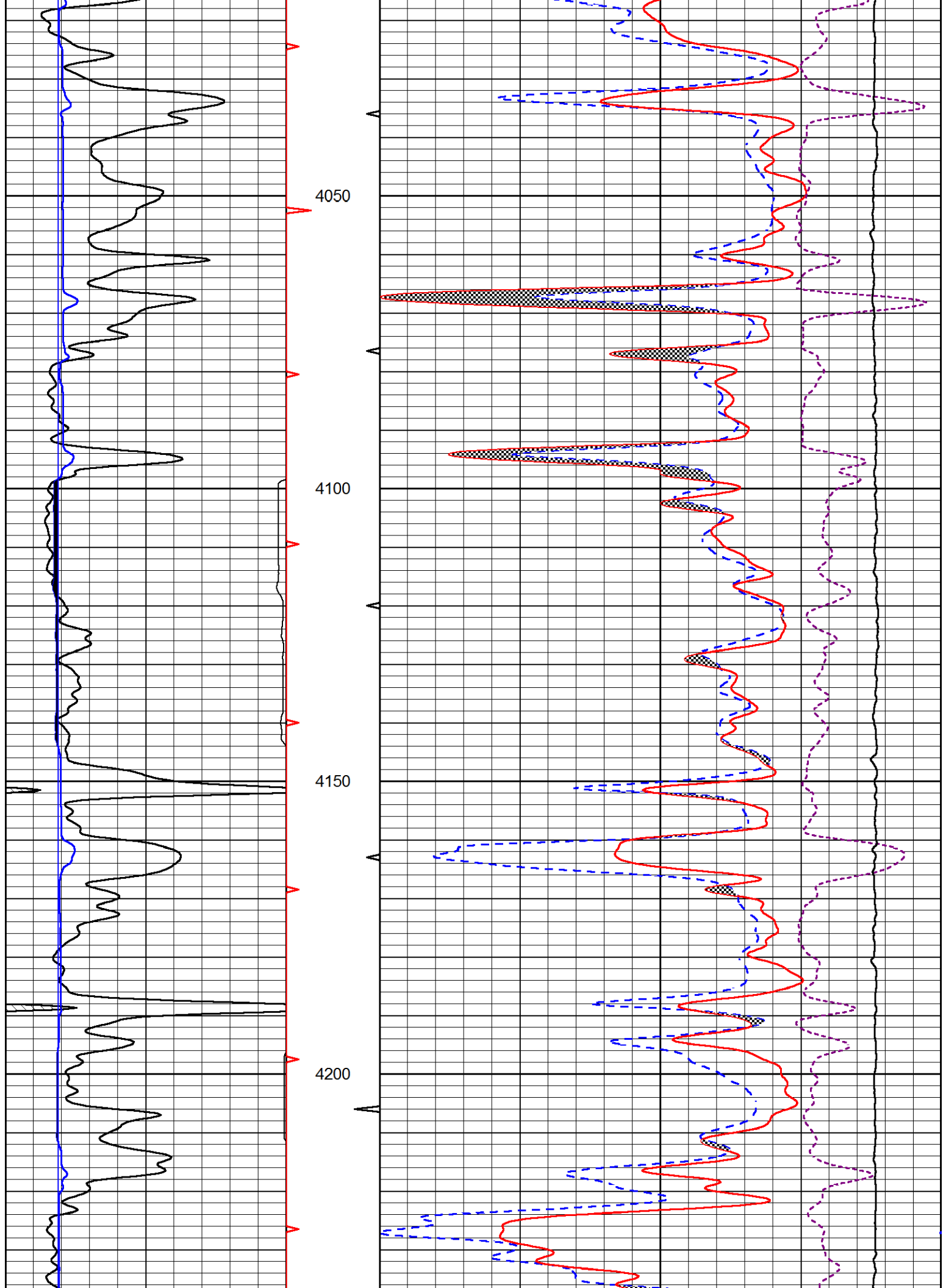
GAMMA RAY (GAPI) 150
6 DCAL (in) 16

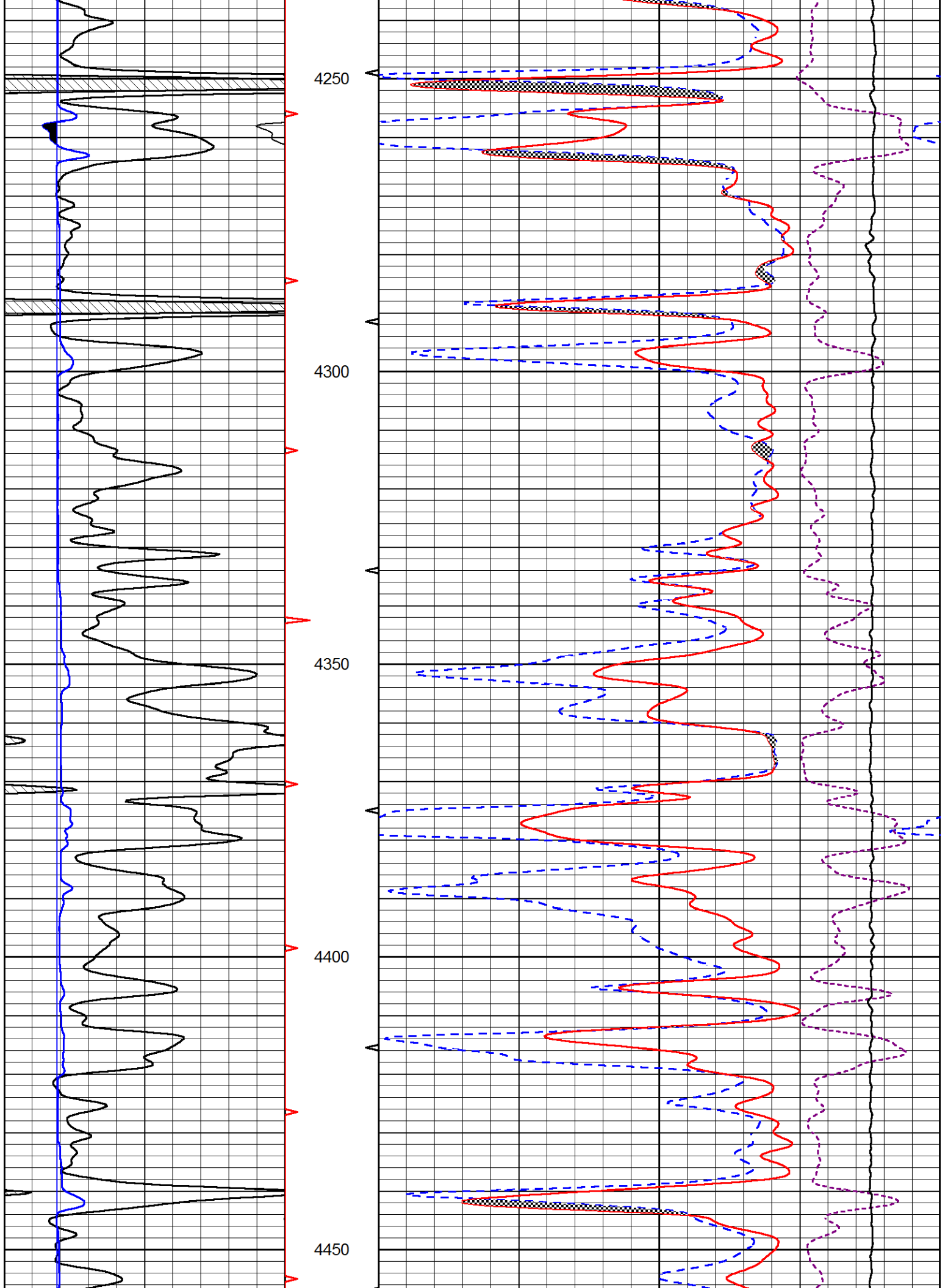
50 CNF OR (pu) -10
30 DPOR (pu) -10
10000 LINE TENSION (lb) 0

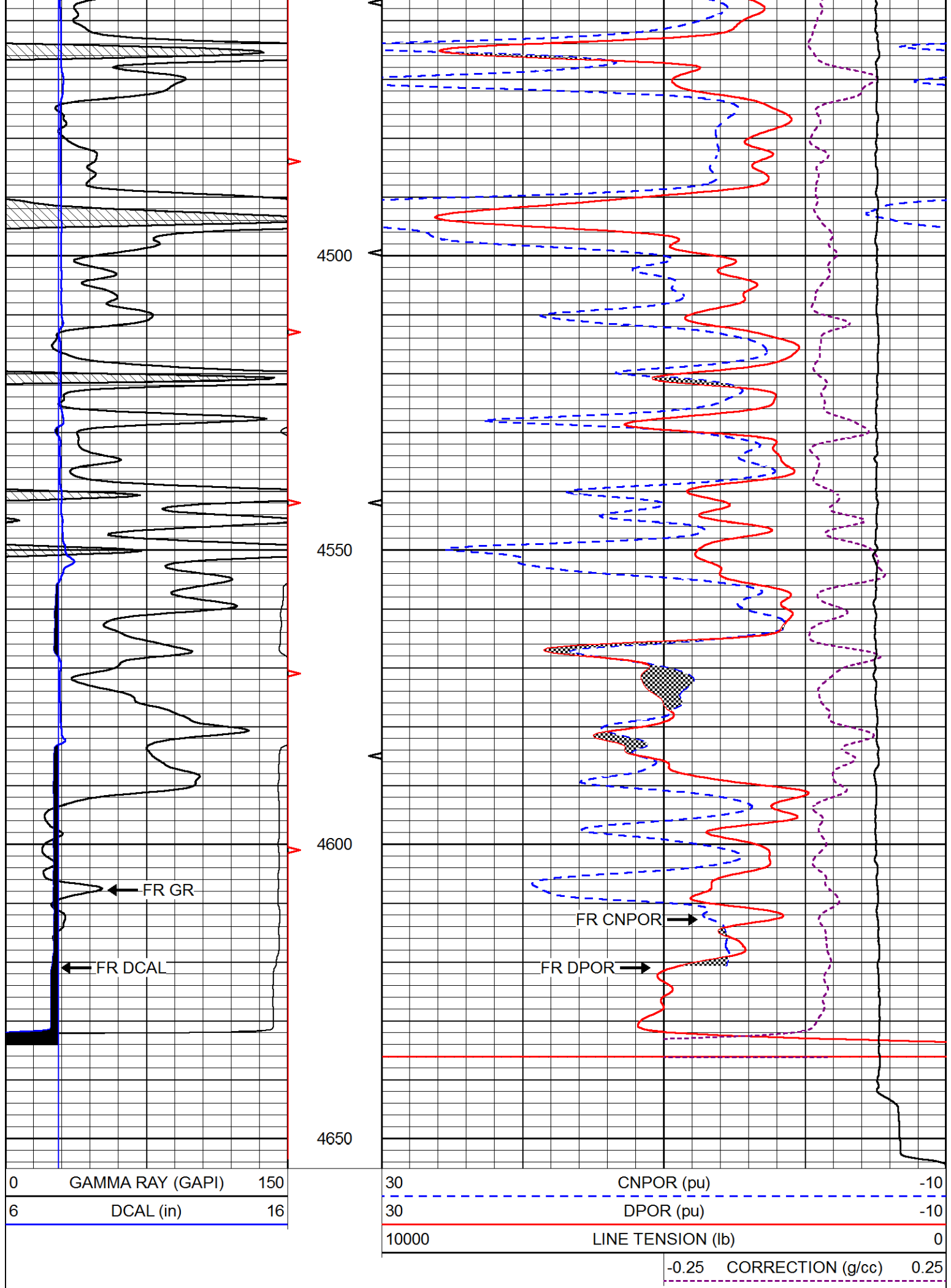
-0.25 CORRECTION (g/cc) 0.25











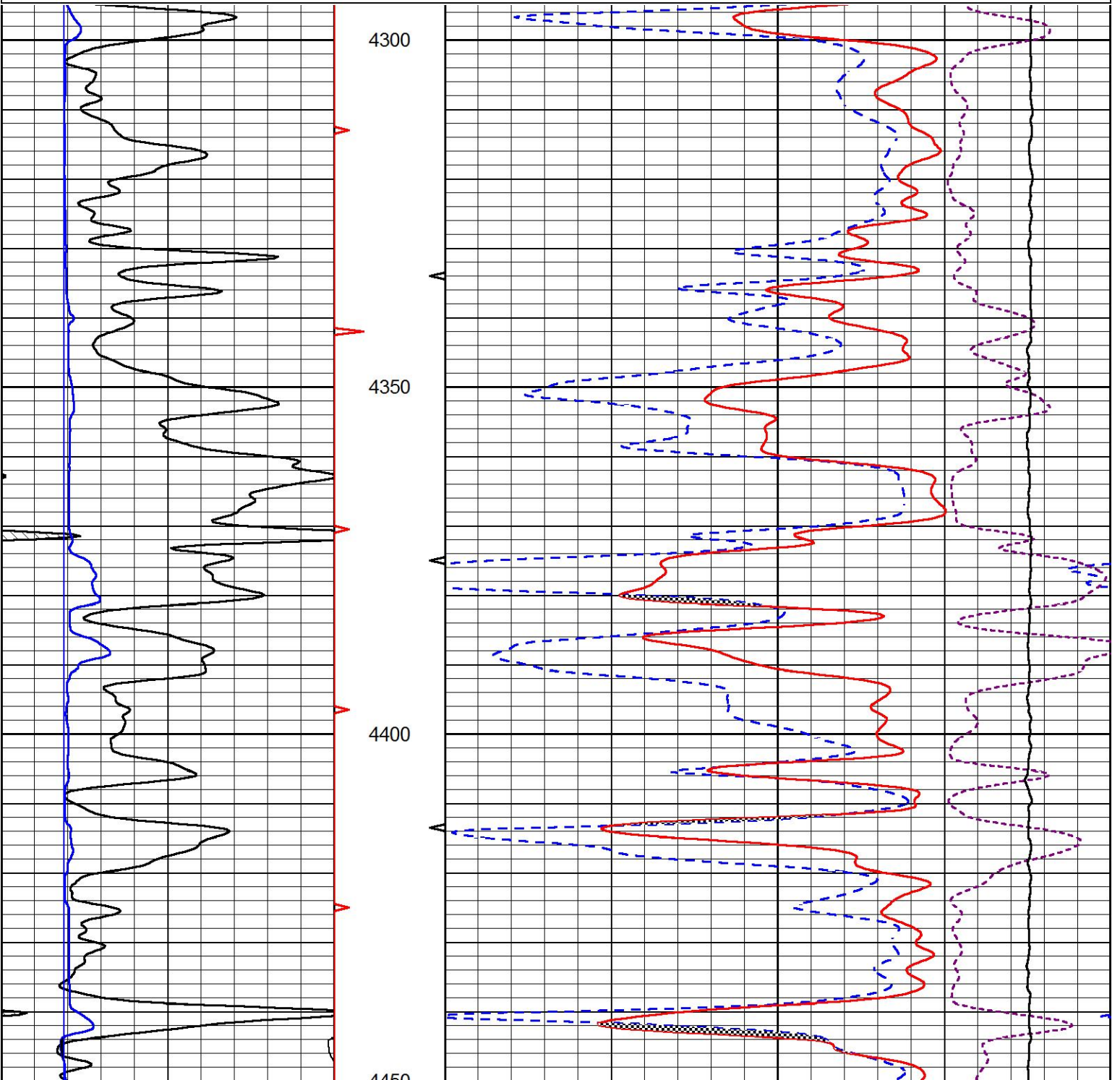


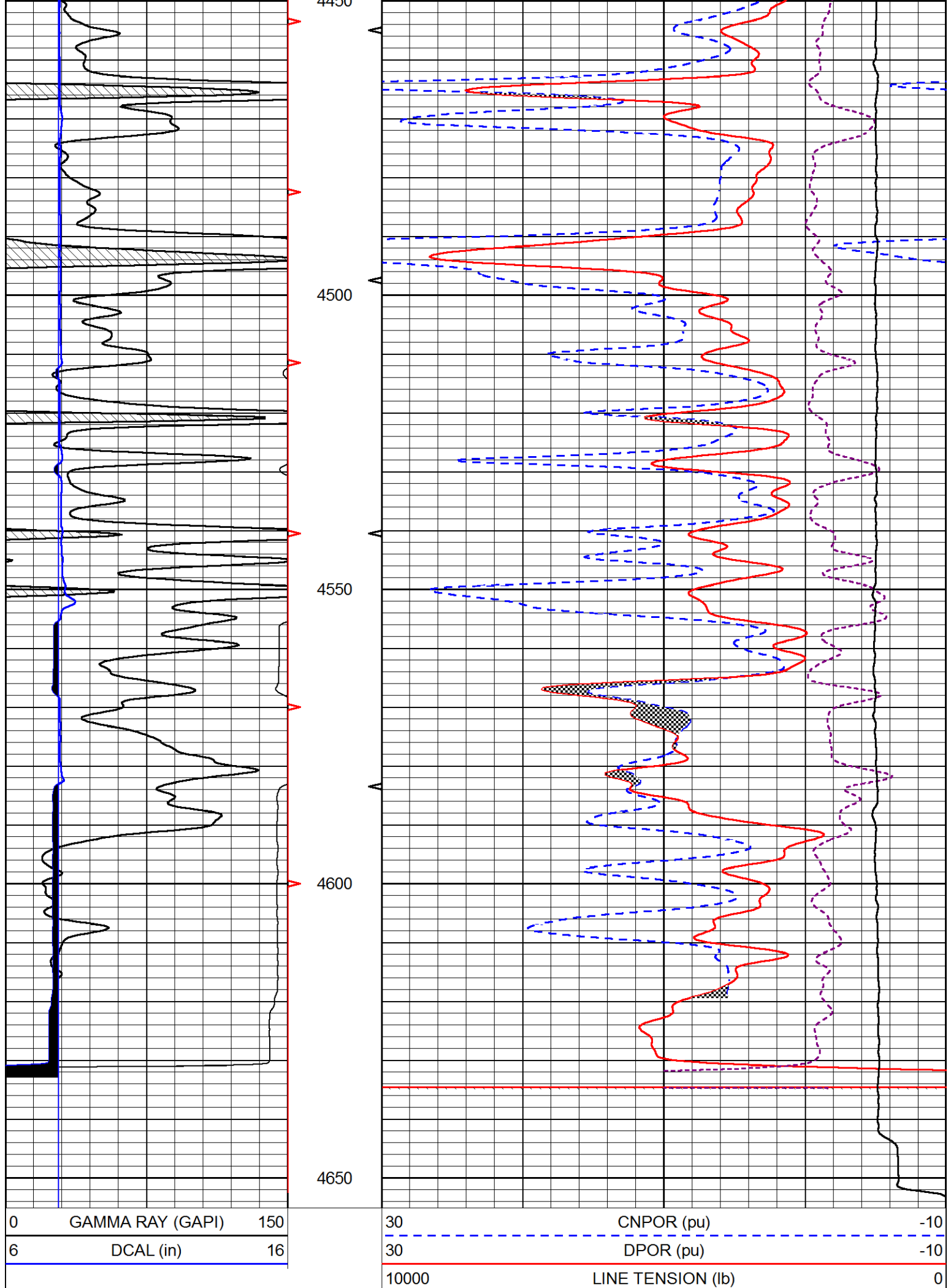
REPEAT SECTION

Database File talon_selfridge 2-11.db
 Dataset Pathname stack/pass3.1
 Presentation Format _CNDLS~1
 Dataset Creation Thu Feb 04 07:33:04 2021
 Charted by Depth in Feet scaled 1:240

0	GAMMA RAY (GAPI)	150
6	DCAL (in)	16

30	CNPOR (pu)	-10
30	DPOR (pu)	-10
10000	LINE TENSION (lb)	0
-0.25	CORRECTION (g/cc)	0.25





Calibration Report

Database File talon_selfridge 2-11.db
 Dataset Pathname stack/pass4.1
 Dataset Creation Thu Feb 04 07:41:13 2021

Dual Induction Calibration Report

Serial-Model: 952-828-PSI HIGH TEMP
 Calibration Performed: Thu Feb 04 06:43:01 2021

Loop:	Readings		References		Results		
	Air	Loop	Air	Loop	Gain	Offset	
Deep	167.000	835.000	0.000	255.000	mmho/m	0.500	-39.000
Medium	0.000	1348.000	142.000	255.000	mmho/m	0.335	-38.500

Compensated Density Calibration Report

Serial-Model: 817-947-M&W
 Source / Verifier: 16955B / 2ci
 Master Calibration Performed: Sun Sep 20 22:09:47 2020

Master Calibration

	Density		Far Detector	Near Detector	
Magnesium	1.755	g/cc	6127.15	5922.31	cps
Aluminum	2.670	g/cc	1141.85	3762.09	cps
Spine Angle = 74.89			Density/Spine Ratio = 0.526		
	Size		Reading		
Small Ring	4.50	in	1.02		
Large Ring	14.50	in	1.23		

Compensated Neutron Calibration Report

Serial Number: 207-MW
 Tool Model: M&W
 Calibration Performed: WED FEB 13 10:30:30 2019

Detector	Readings	Target	Normalization
Short Space	6240.00 cps	1000.00 cps	1.6025
Long Space	460.00 cps	1000.00 cps	1.9500

Gamma Ray Calibration Report

Serial Number: 233-M&W
 Tool Model: M&W
 Calibration Performed: Sun Sep 20 22:10:24 2020

Calibrator Value: 1.0 GAPI

Background Reading: 0.0 cps
 Calibrator Reading: 1.0 cps

Sensitivity:

0.5500

GAPI/cps