

MICRO LOG



Company VAL ENERGY, INC.
 Well HOUSE RANCH #2-30
 Field UNKNOWN
 County COWLEY State KANSAS

Location: 1170' FSL & 2140' FEL
 API #: 15-035-24724-0000
 Other Services CDL/CNL DIL
 Elevation
 Permanent Datum GROUND LEVEL Elevation 1278
 Log Measured From KELLY BUSHING 9' A.G.L.
 Drilling Measured From KELLY BUSHING

Date	10/23/20
Run Number	TWO
Depth Driller	3474
Depth Logger	3468
Bottom Logged Interval	3466
Top Log Interval	300
Casing Driller	8 5/8" @ 342
Casing Logger	342
Bit Size	7 7/8"
Type Fluid in Hole	CHEMICAL MUD
Density / Viscosity	9.3/38
pH / Fluid Loss	10.0/8.0
Source of Sample	FLOWLINE
Rm @ Meas. Temp	3.1 @ 60F
Rmf @ Meas. Temp	2.32 @ 60F
Rmc @ Meas. Temp	3.72 @ 60F
Source of Rmf / Rmc	MEASURED
Rm @ BHT	1.67 @ 111F
Time Circulation Stopped	2 HOURS
Time Logger on Bottom	////
Maximum Recorded Temperature	111F
Equipment Number	1523
Location	HAYS, KANSAS
Recorded By	GUS PFANENSTIEL
Witnessed By	JOE BAKER

<<< Fold Here >>>

All interpretations are opinions based on inferences from electrical or other measurements and we cannot and do not guarantee the accuracy or correctness of any interpretation, and we shall not, except in the case of gross or willful negligence on our part, be liable or responsible for any loss, costs, damages, or expenses incurred or sustained by anyone resulting from any interpretation made by any of our officers, agents or employees. These interpretations are also subject to our general terms and conditions set out in our current Price Schedule.

Comments

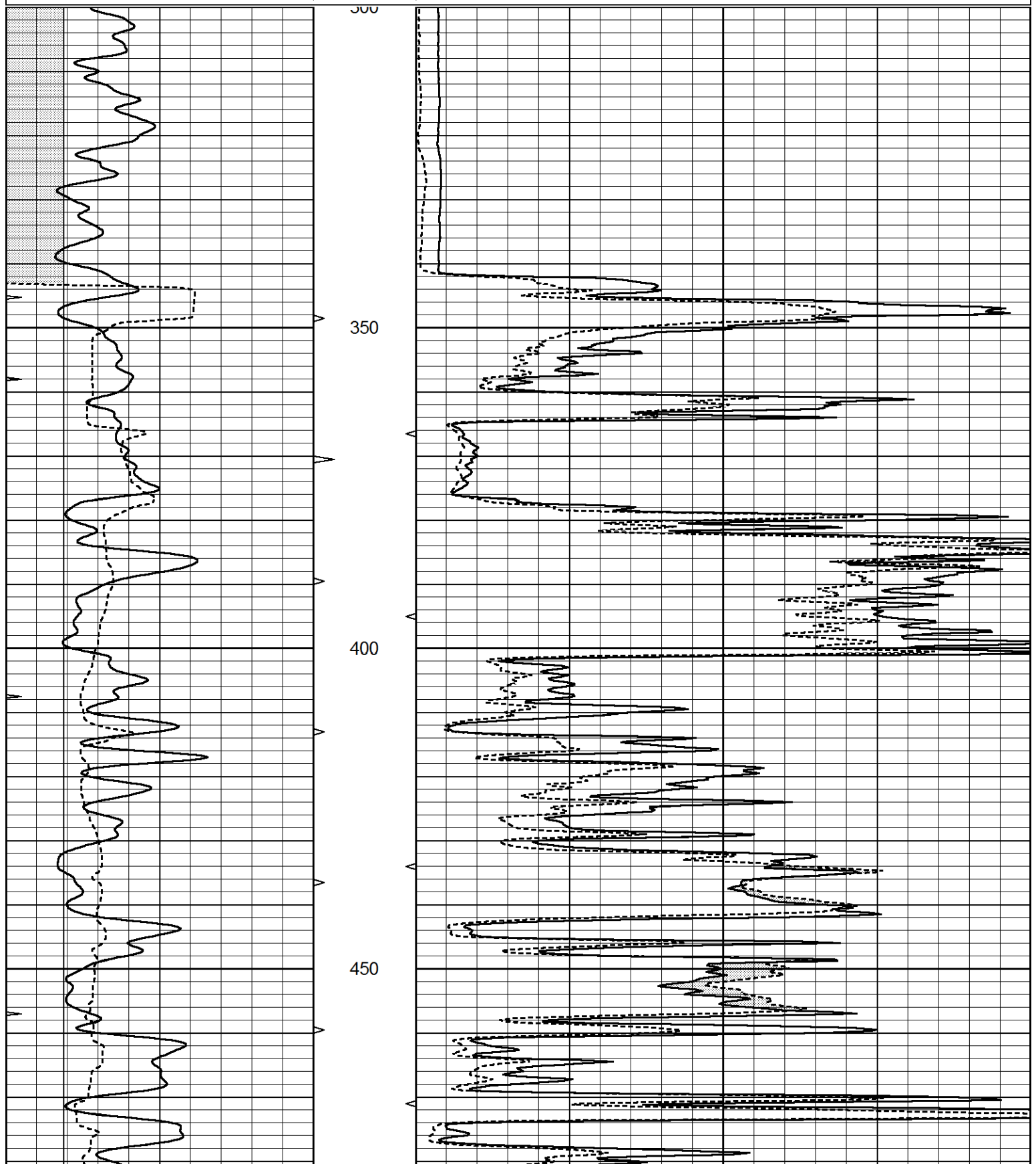
THANK YOU FOR USING ELI WIRELINE, HAYS, KS. (785) 628-6395
 DIRECTIONS:WINFIELD EAST TO COWLEY 1 RD, SOUTH TO 212 RD,
 EAST 3 MILES, SOUTH 1 MILE, EAST AT TANK BATTERY

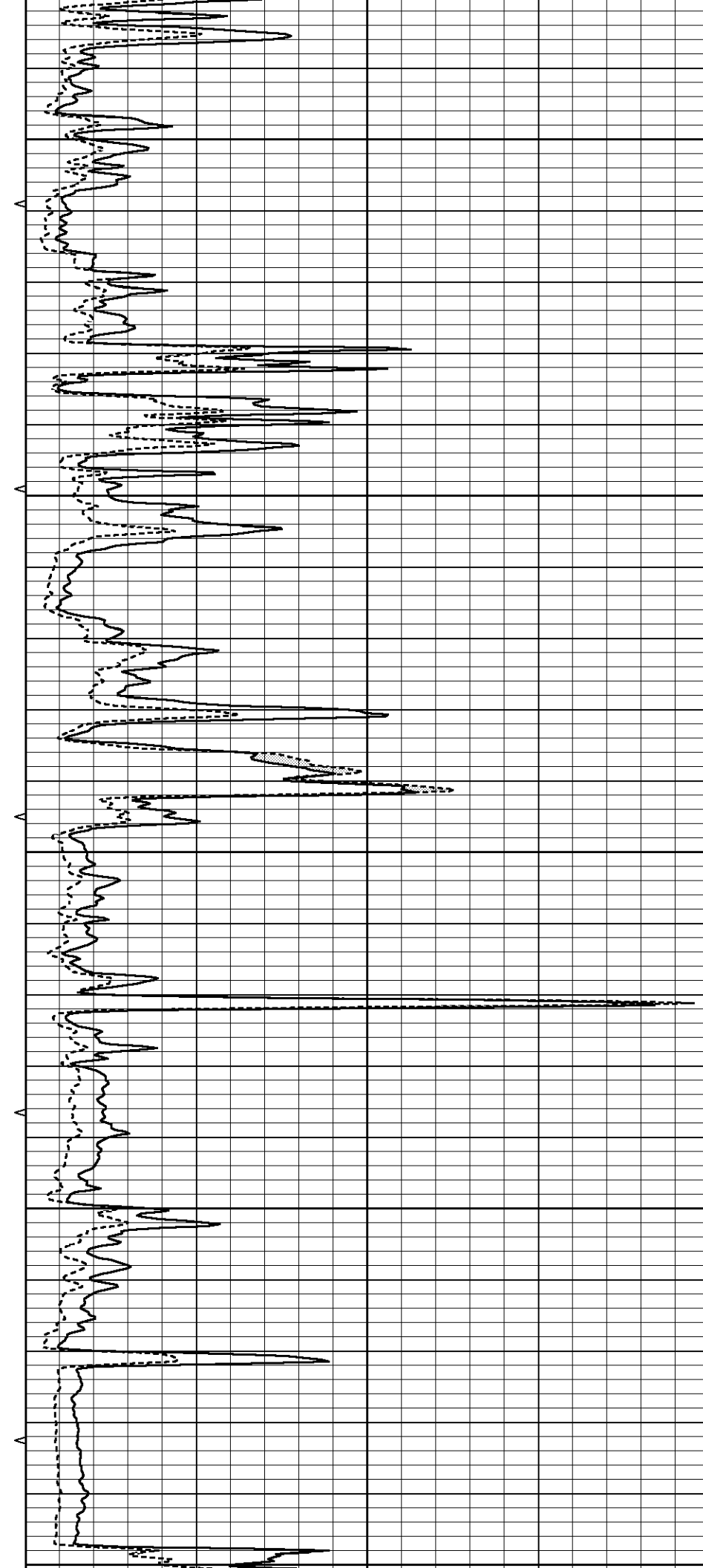
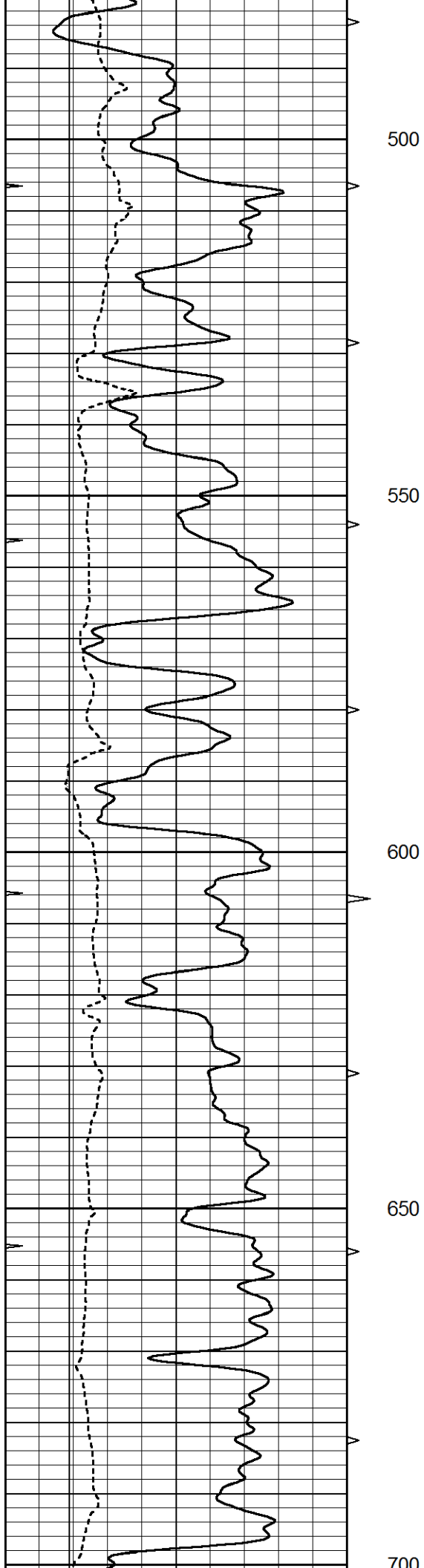


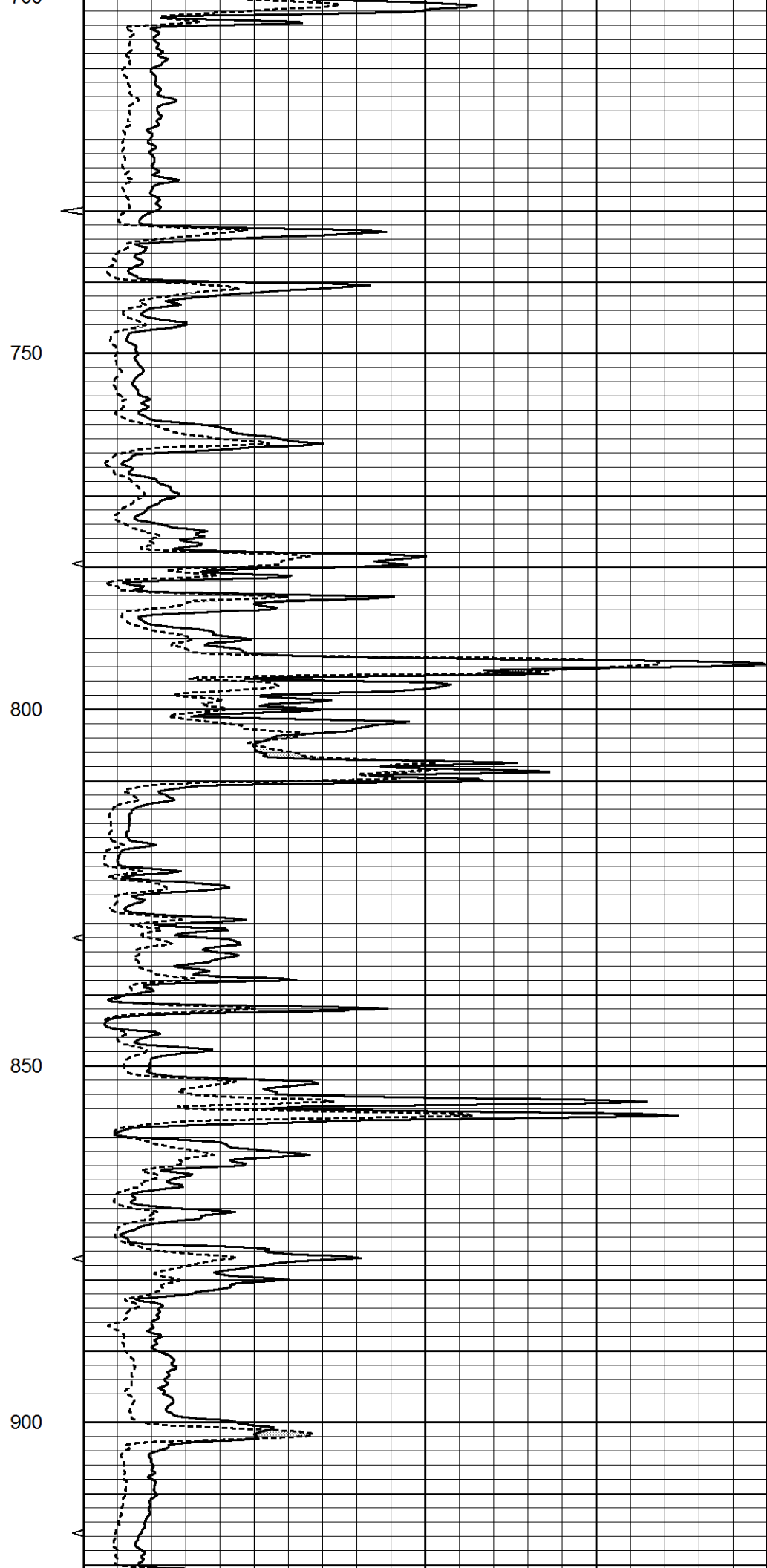
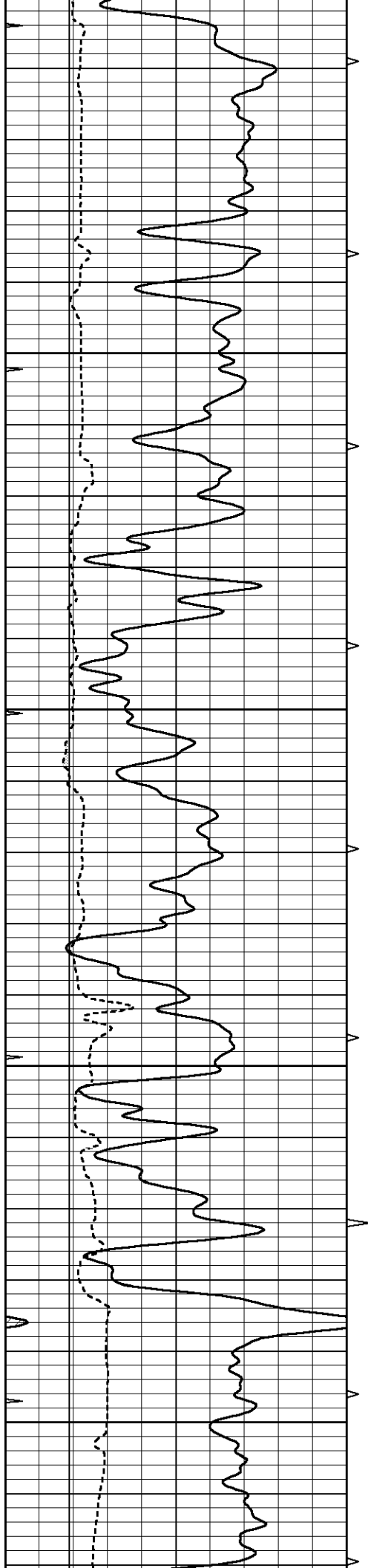
MAIN PASS

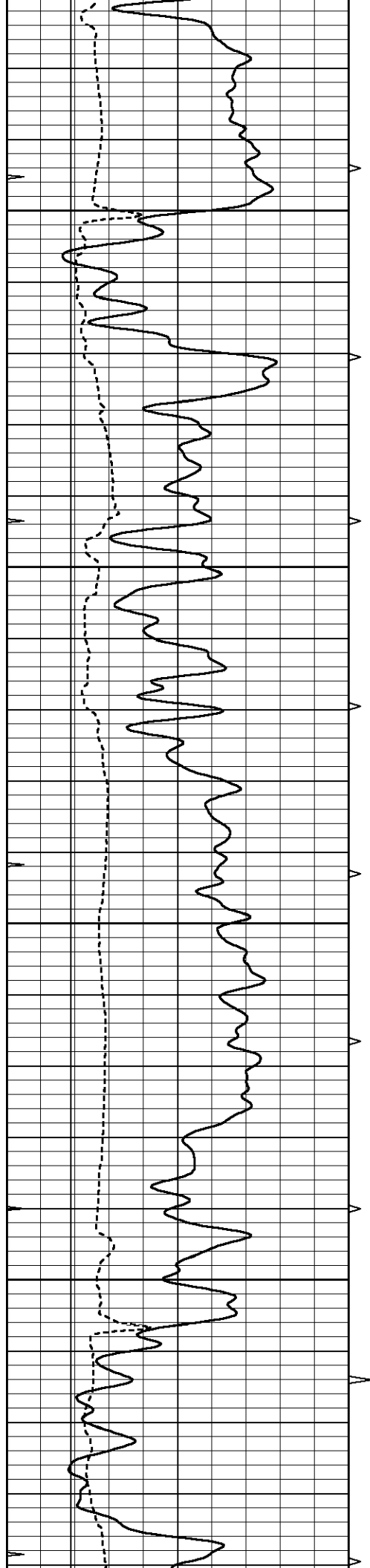
Database File 5034pe.db
 Dataset Pathname pass6.1
 Presentation Format _micro
 Dataset Creation Fri Oct 23 09:42:01 2020
 Charted by Depth in Feet scaled 1:240

0	GAMMA RAY (GAPI)	150	ABHV	0	MEL1.5 (Ohm-m)	40
6	CALIPER (in)	16	10 (ft3)	0	MEL2.0 (Ohm-m)	40
0	MINMK	20	TBHV			
			0 (ft3)	10		







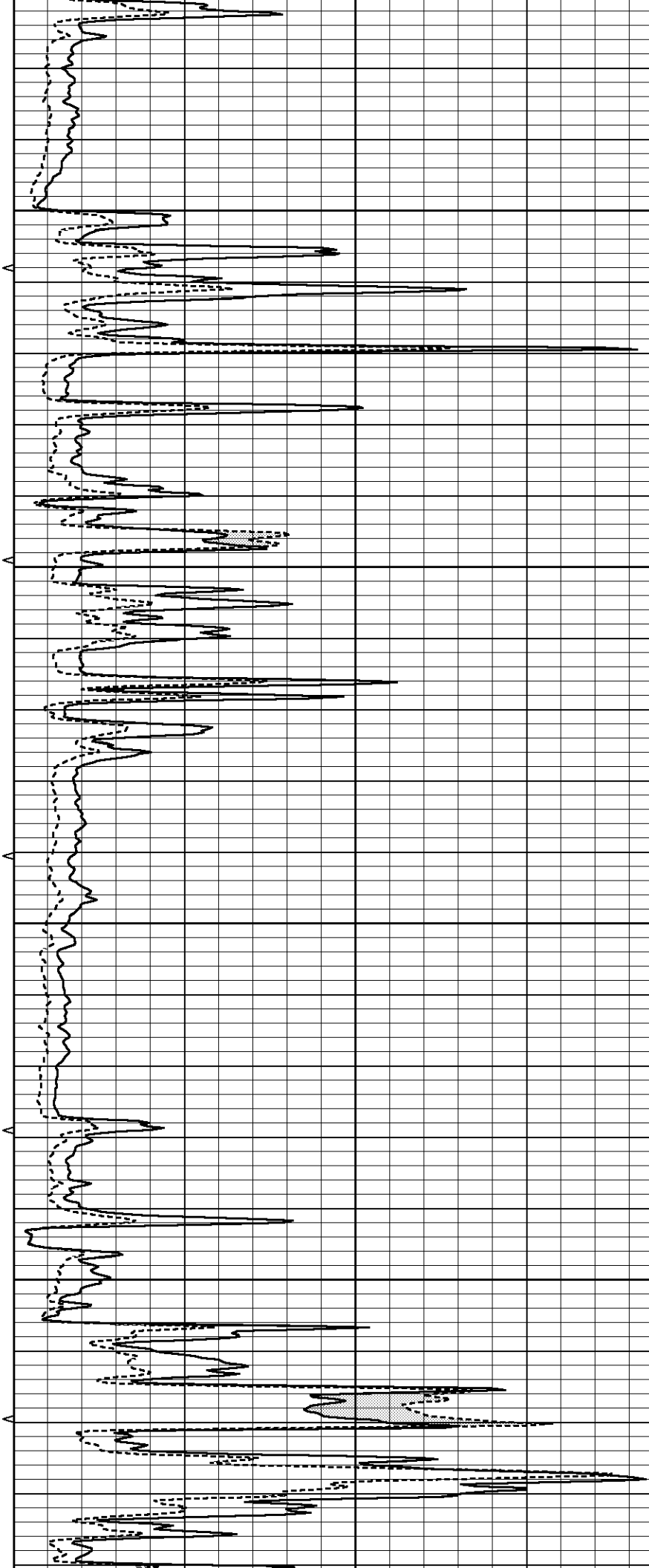


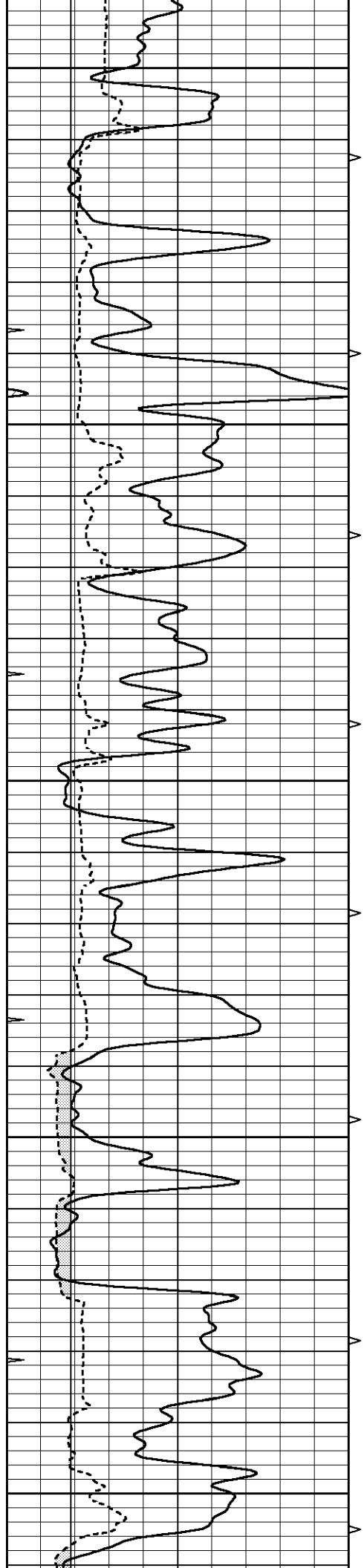
950

1000

1050

1100





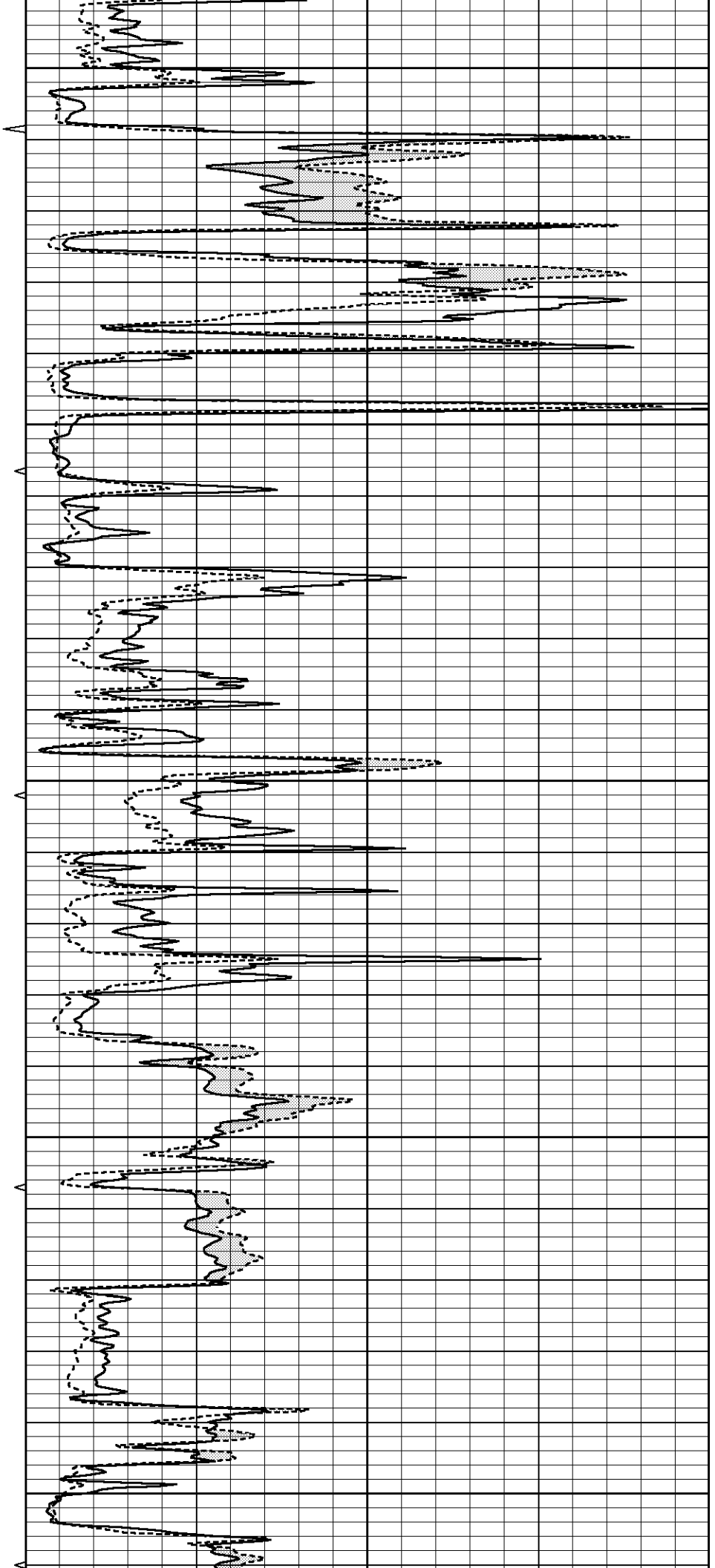
1150

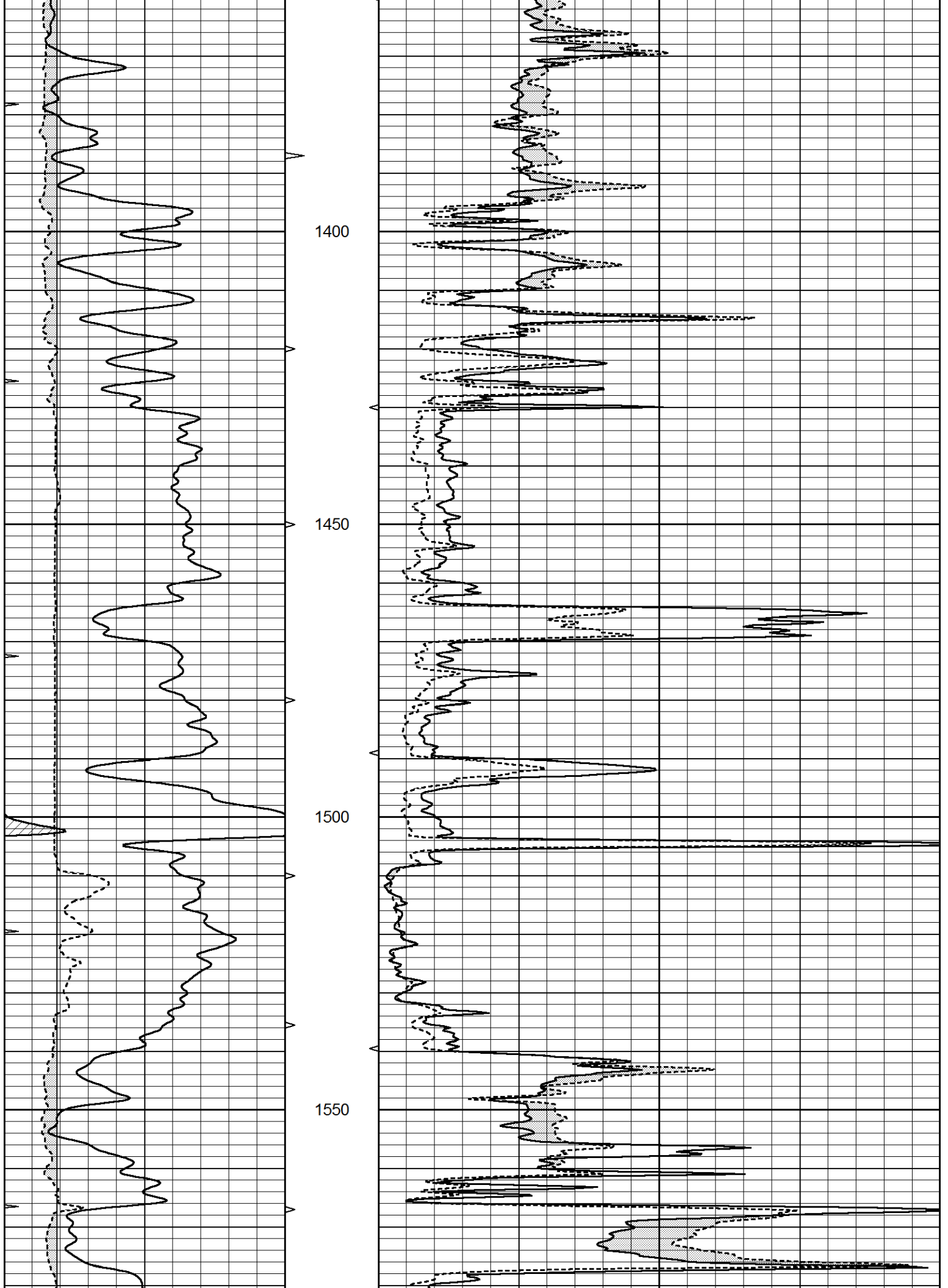
1200

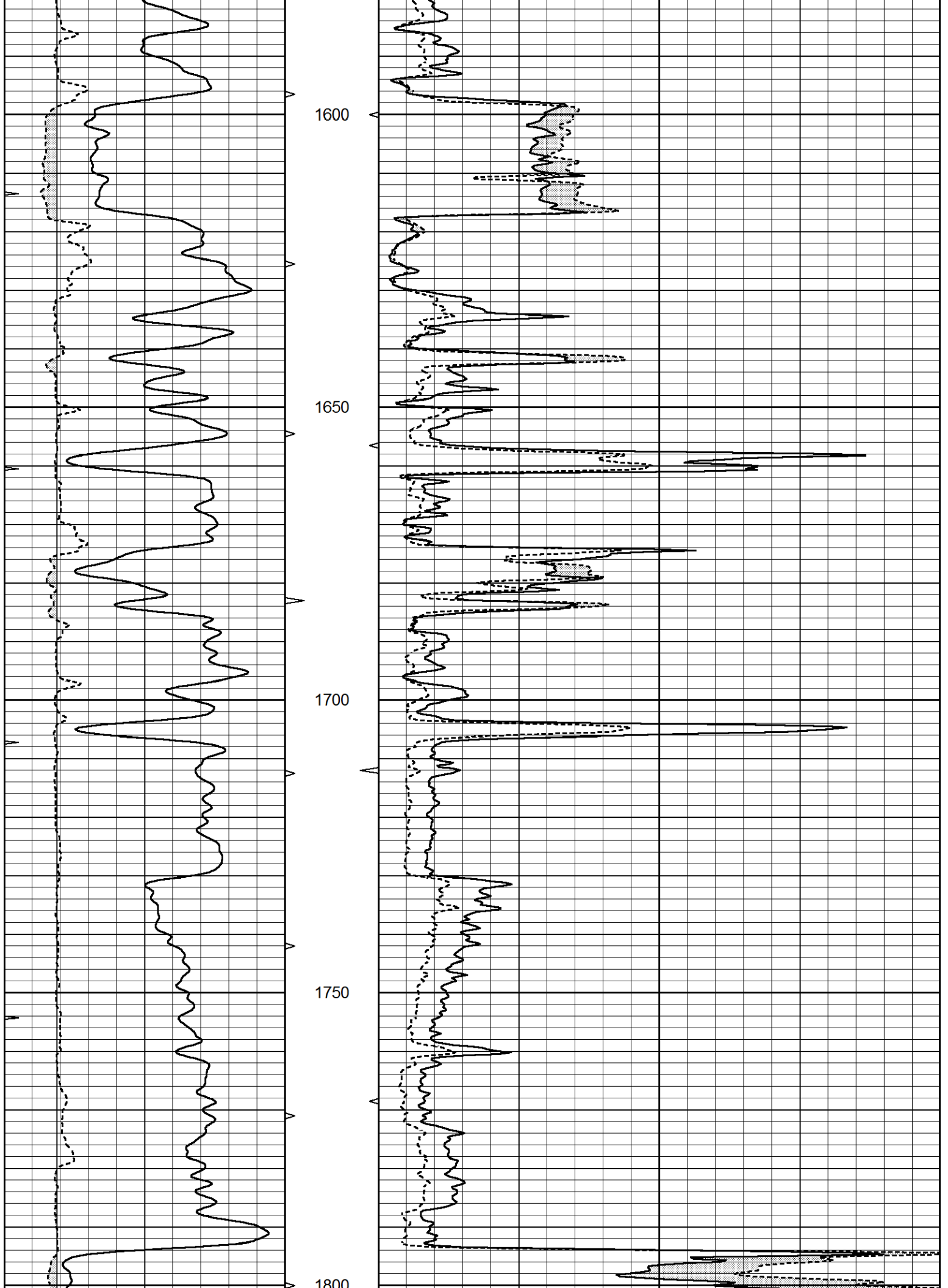
1250

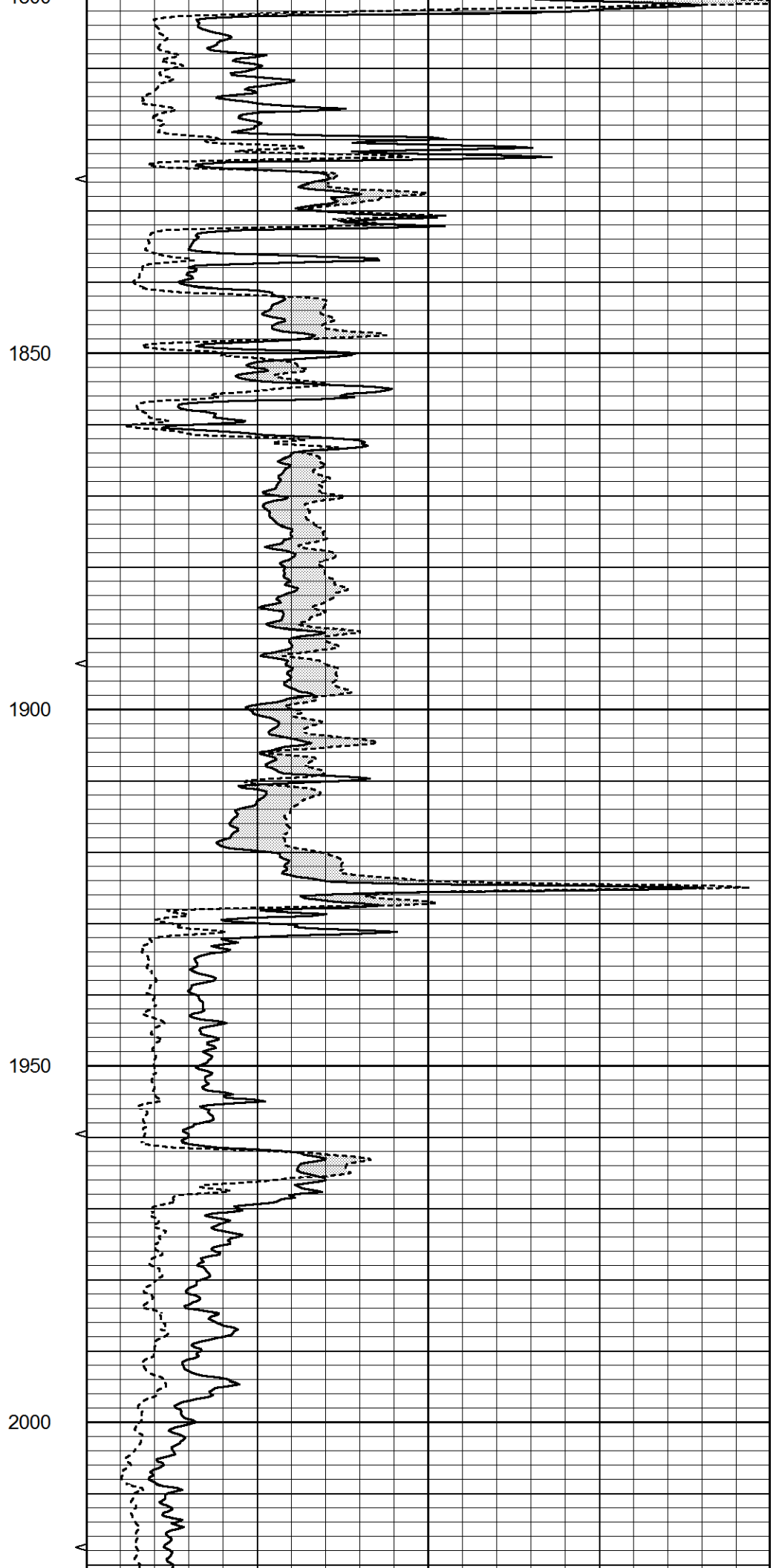
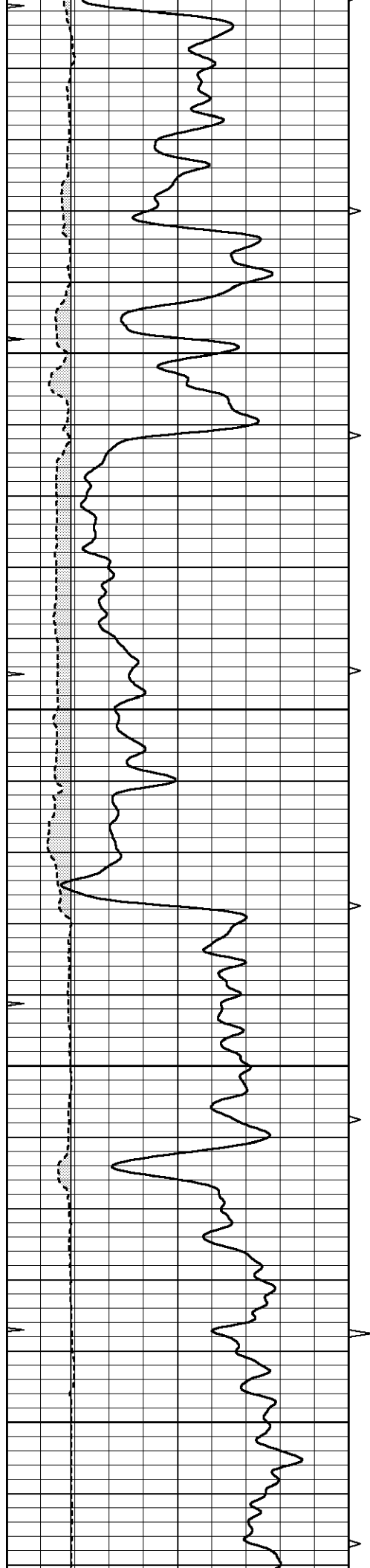
1300

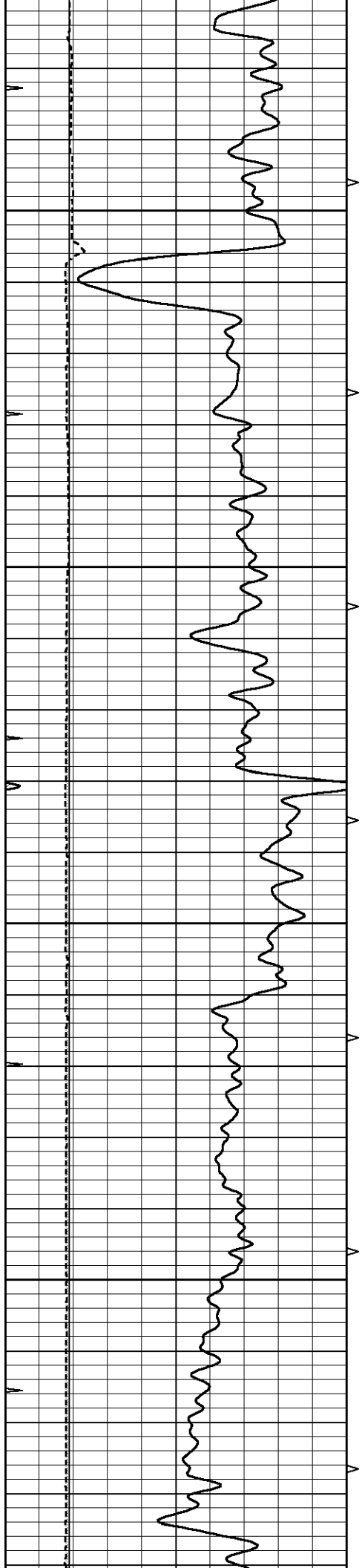
1350









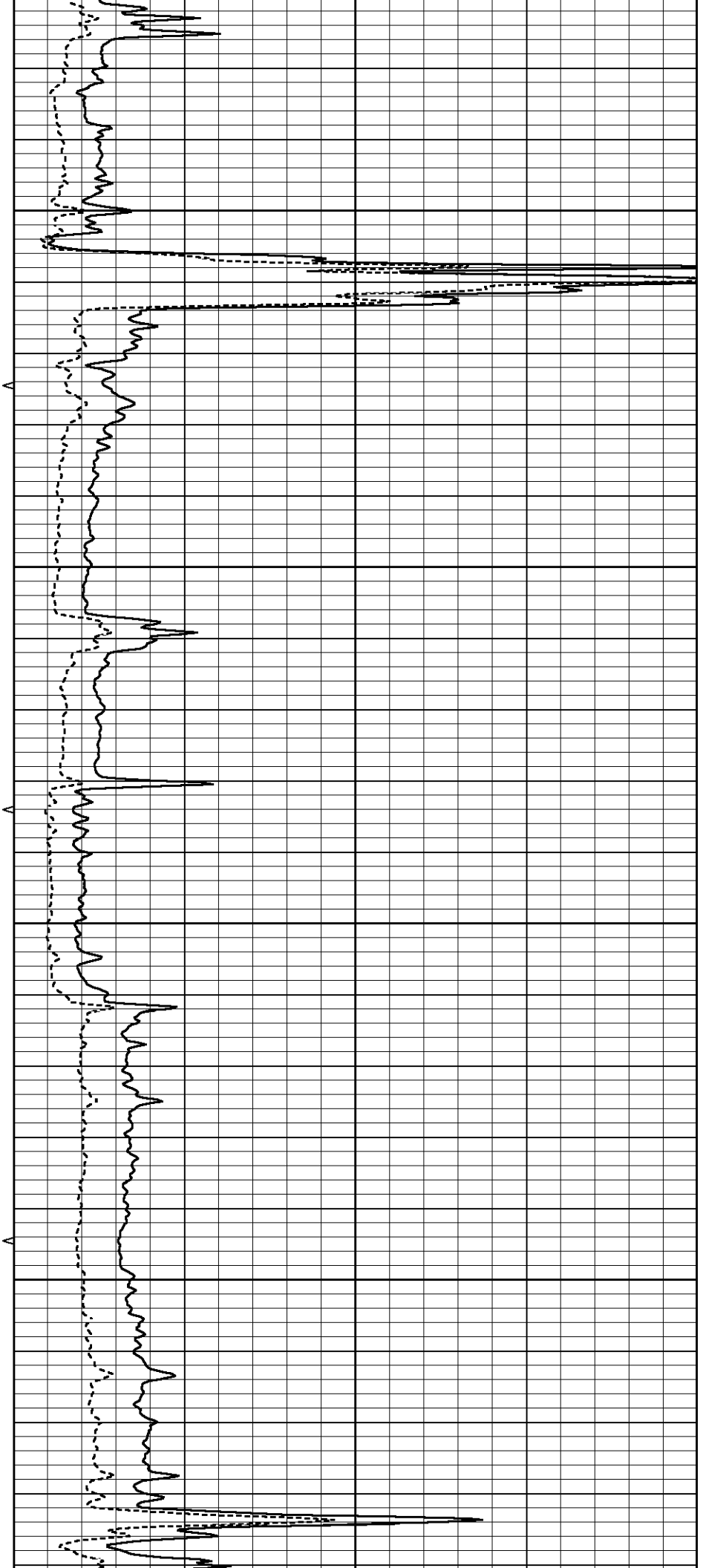


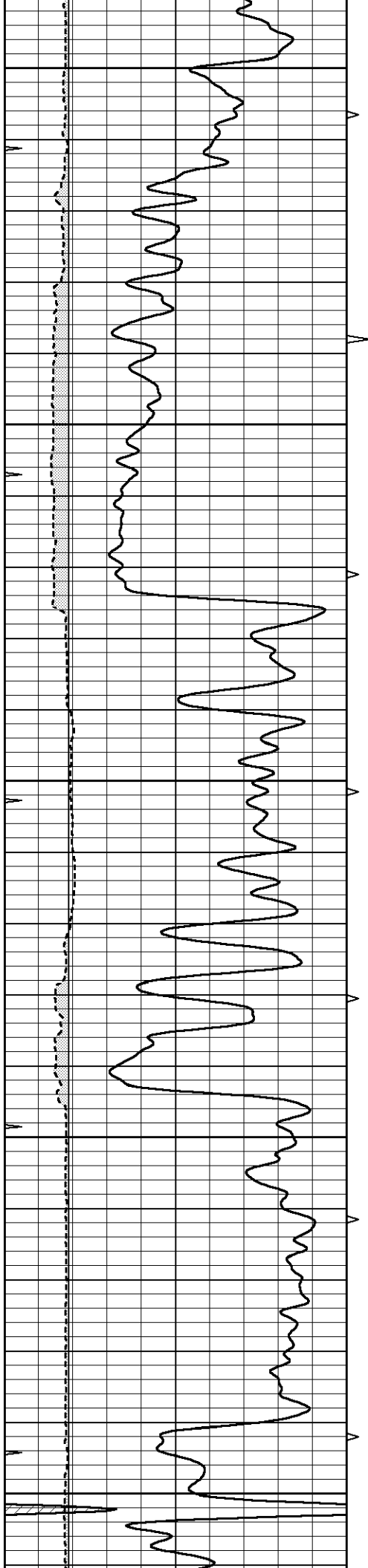
2050

2100

2150

2200





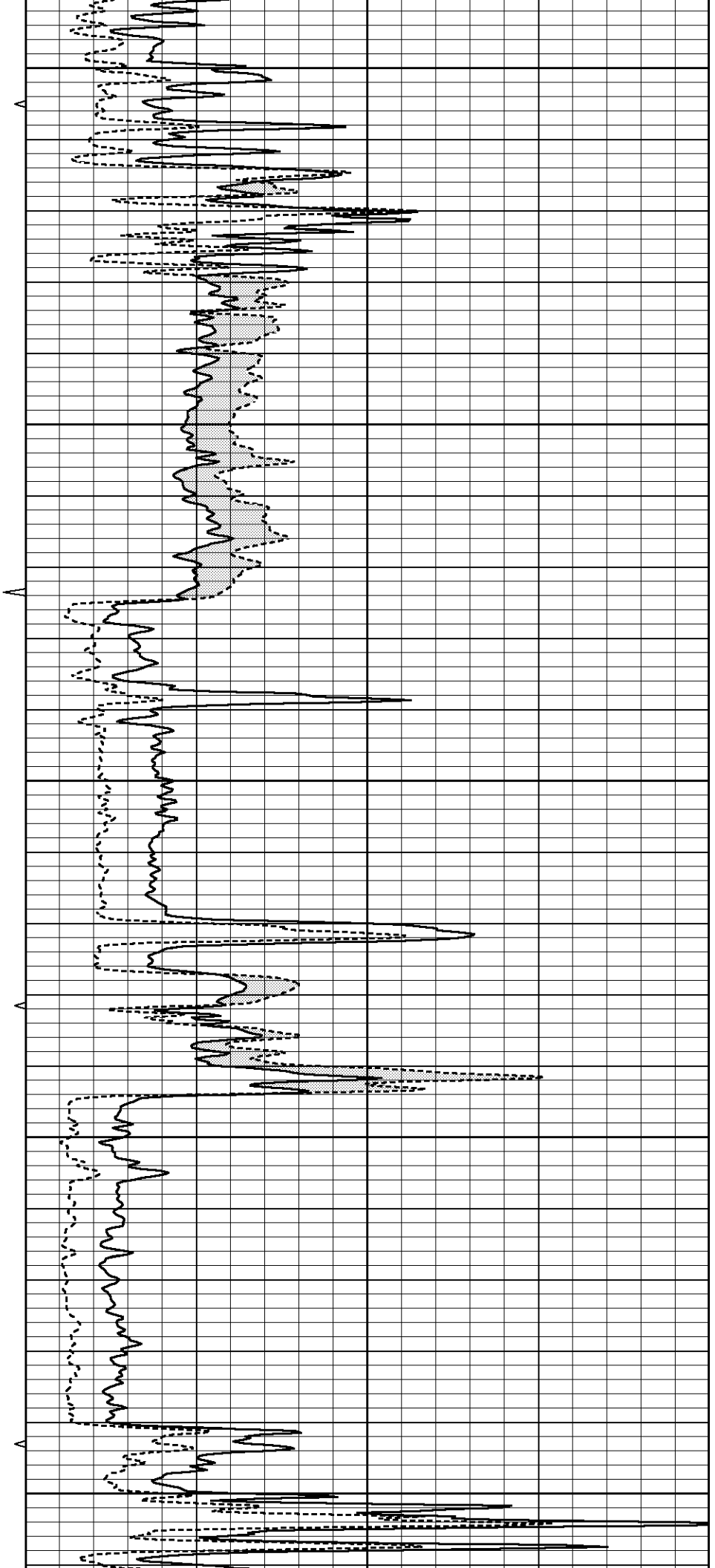
2250

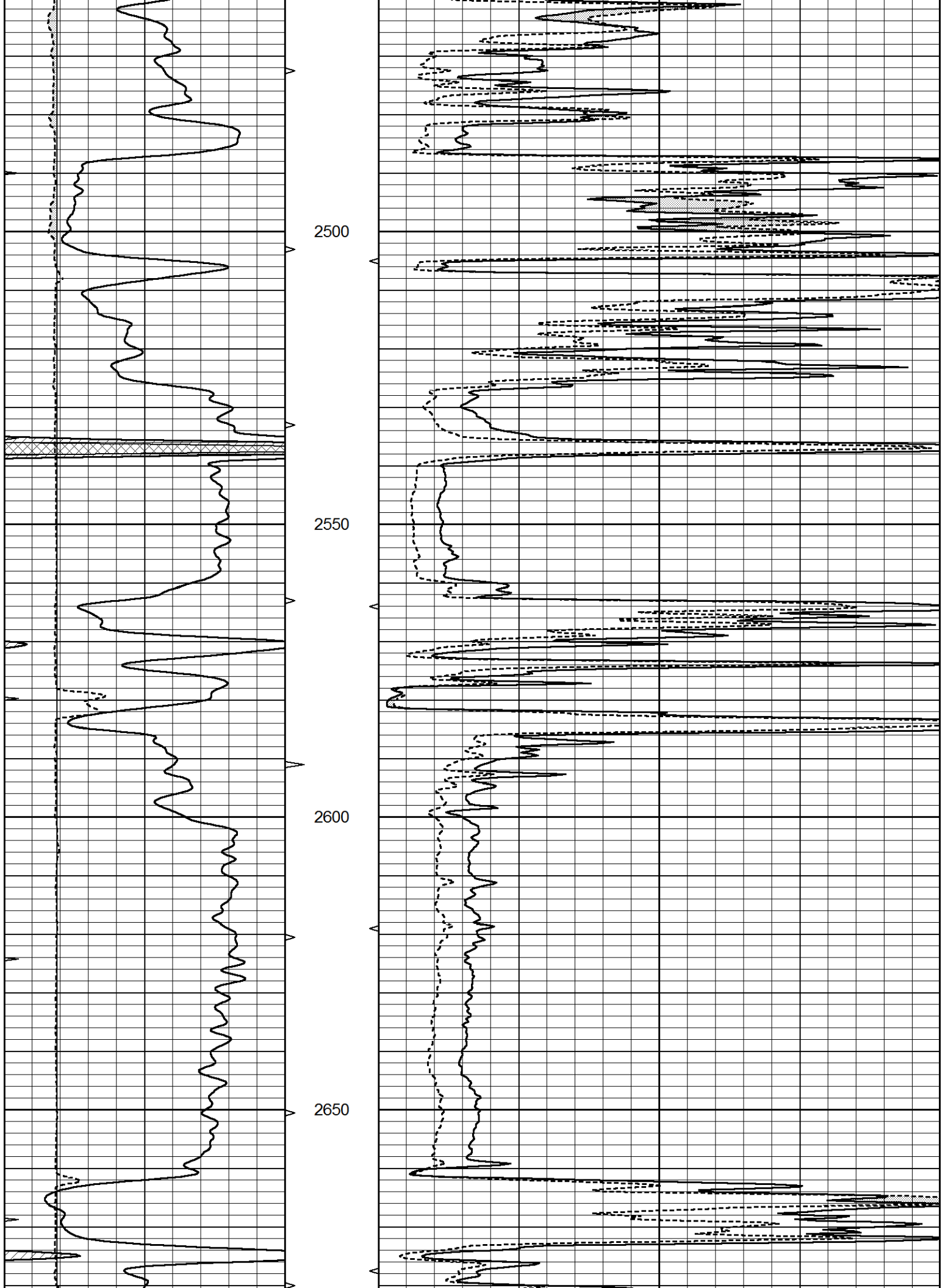
2300

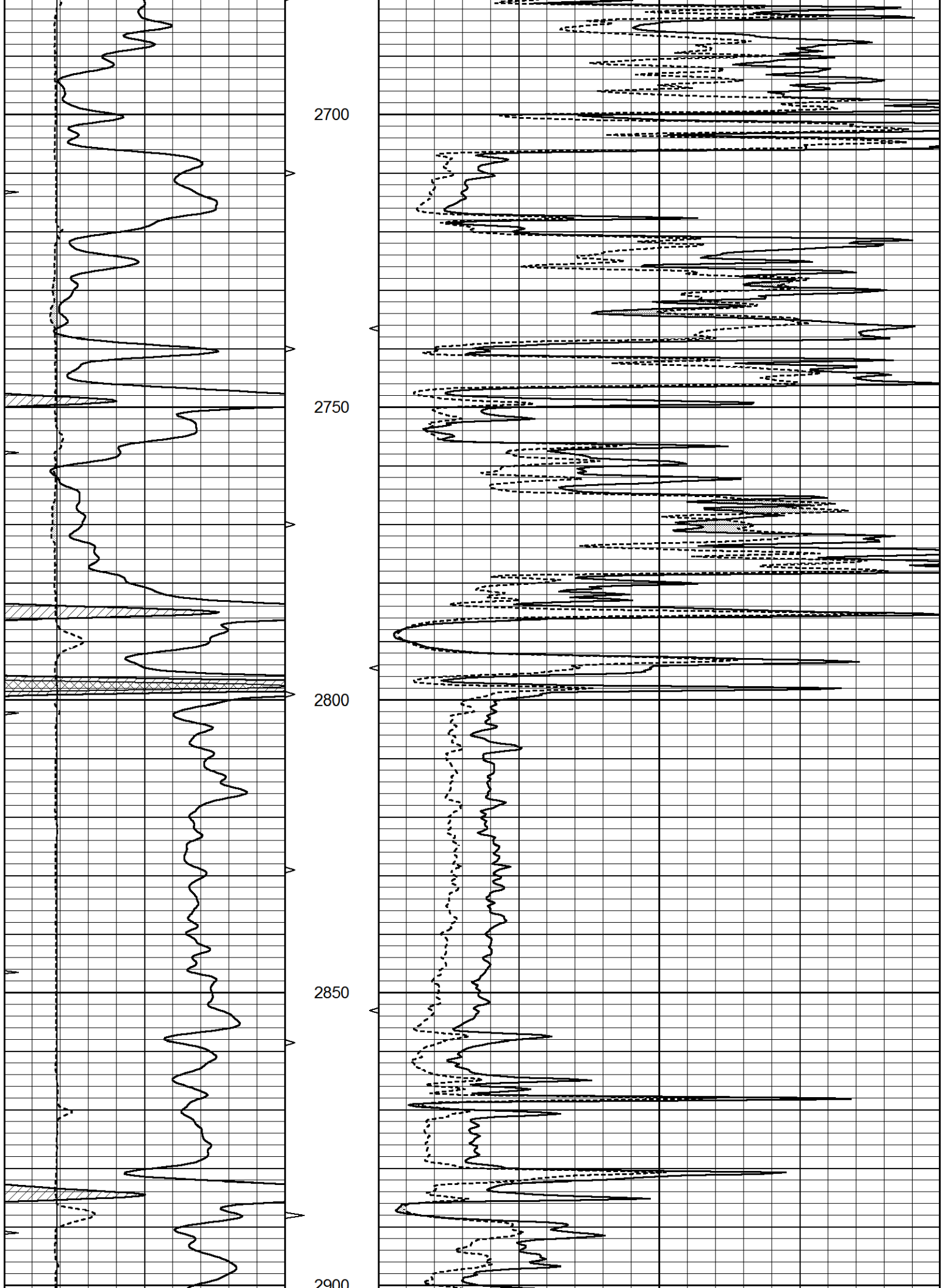
2350

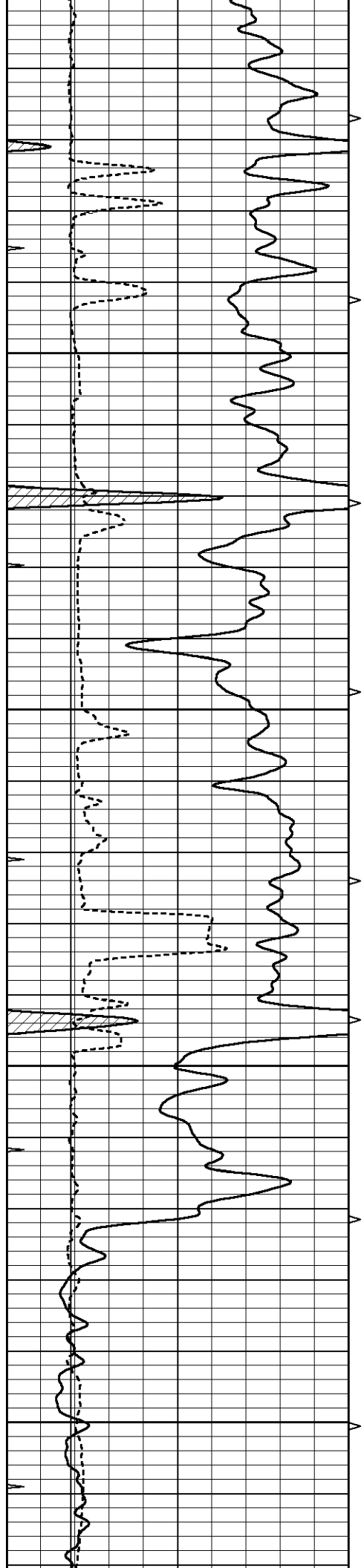
2400

2450

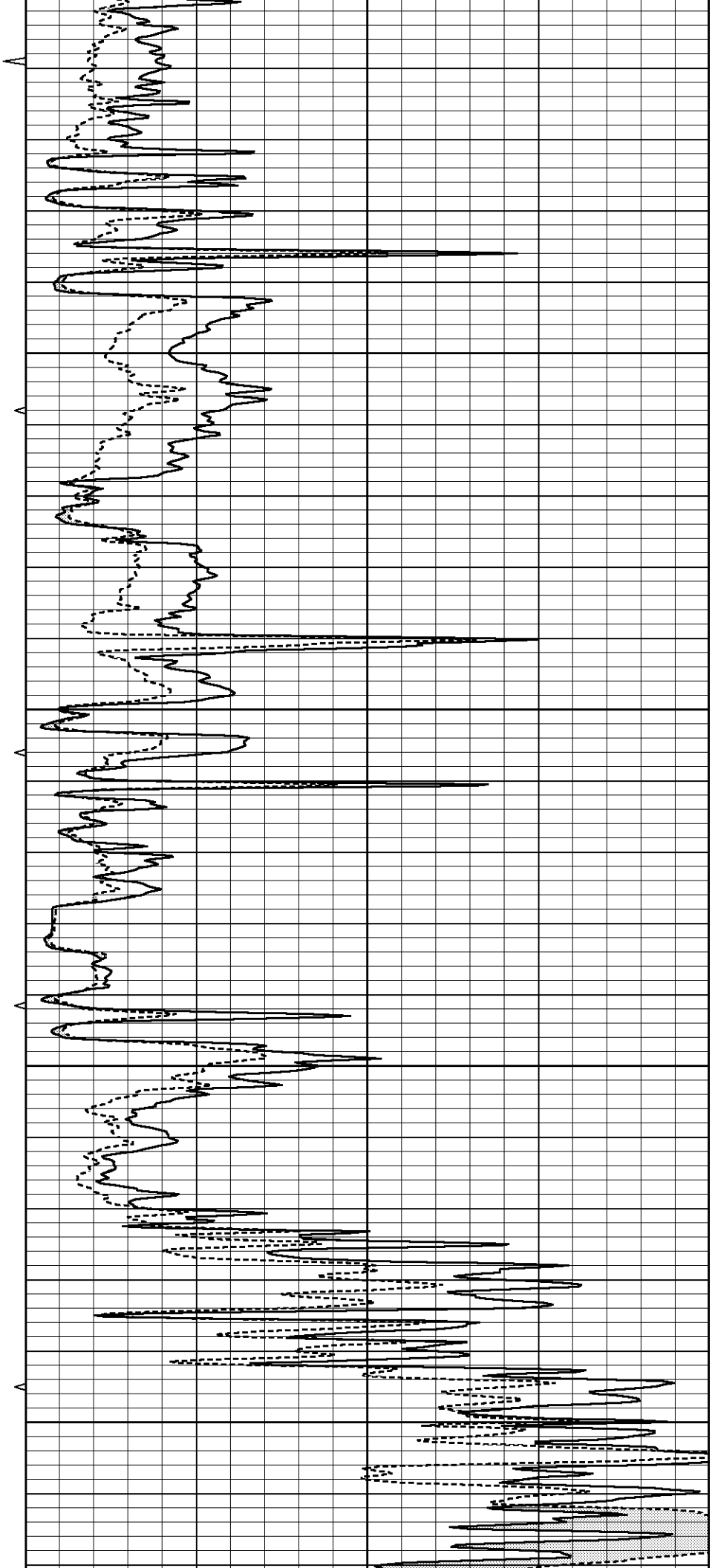


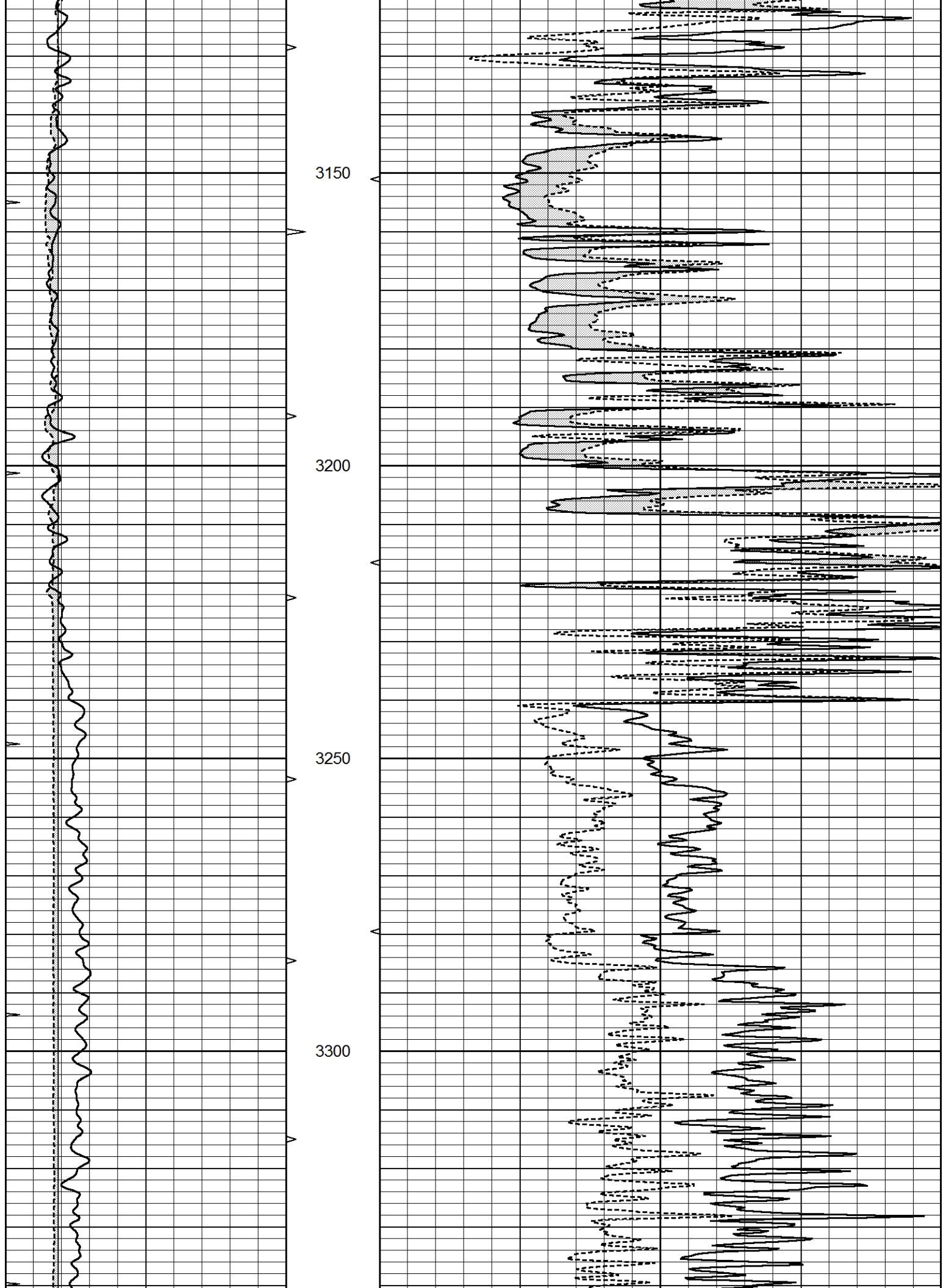


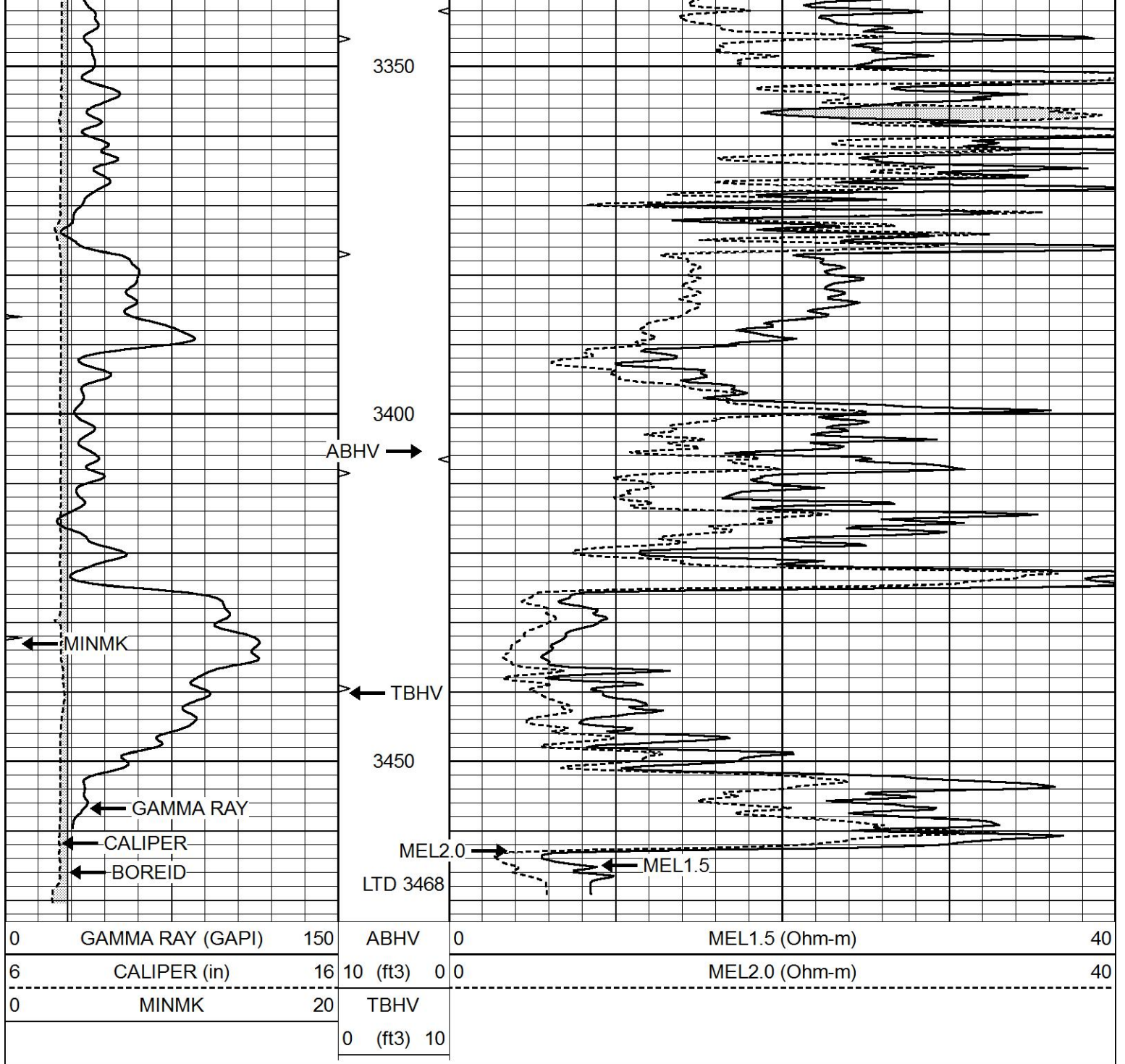




2900
2950
3000
3050
3100



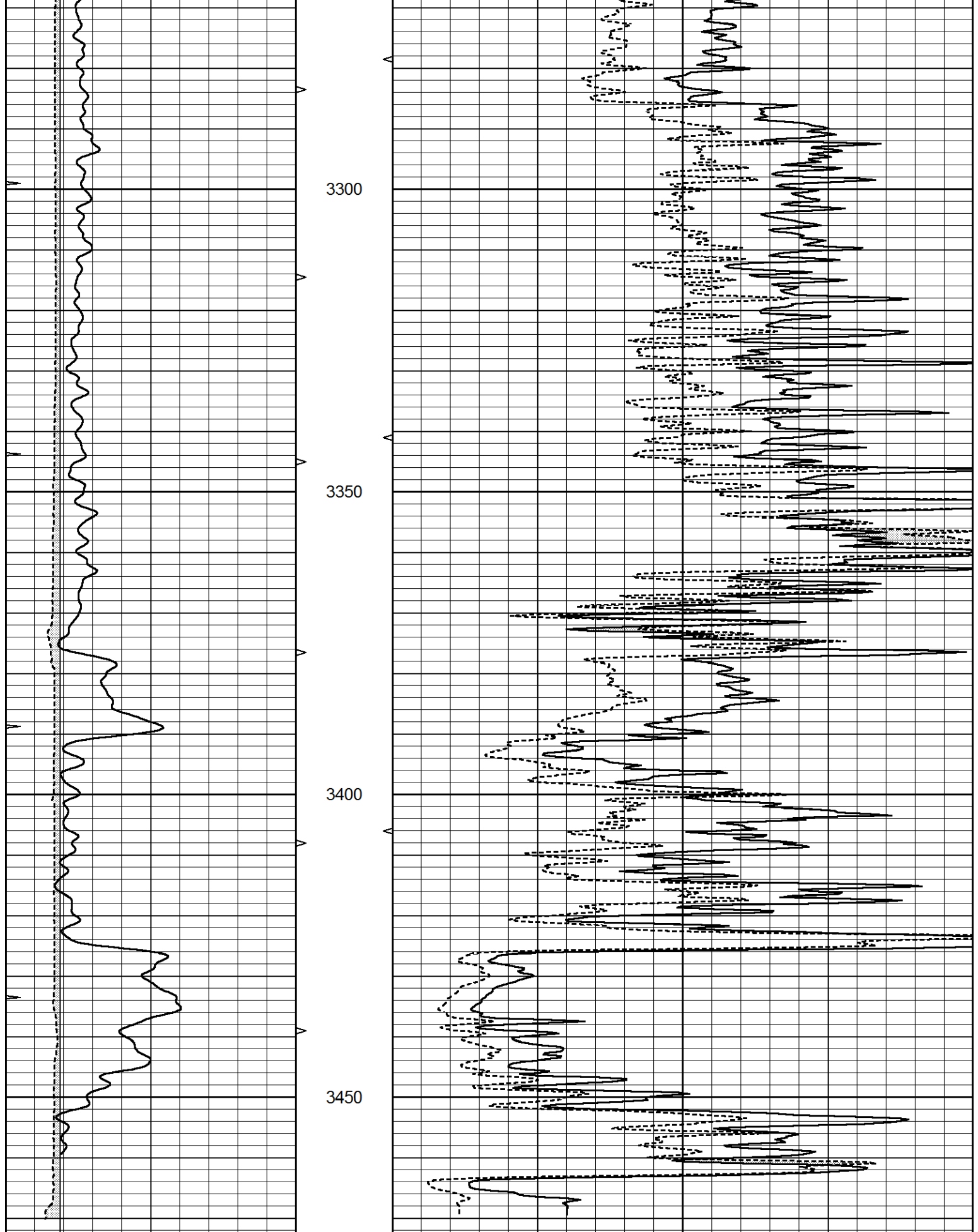




REPEAT SECTION

Database File 5034pe.db
 Dataset Pathname pass5.1
 Presentation Format _micro
 Dataset Creation Fri Oct 23 09:38:59 2020
 Charted by Depth in Feet scaled 1:240

0	GAMMA RAY (GAPI)	150	ABHV	0	MEL1.5 (Ohm-m)	40
6	CALIPER (in)	16	10 (ft3)	0	MEL2.0 (Ohm-m)	40
0	MINMK	20	TBHV			
			0 (ft3)	10		



0	GAMMA RAY (GAPI)	150	ABHV	0	MEL1.5 (Ohm-m)	40
6	CALIPER (in)	16	10 (ft3)	0 0	MEL2.0 (Ohm-m)	40
0	MINMK	20	TBHV			

Calibration Report

Database File 5034pe.db
 Dataset Pathname pass5.1
 Dataset Creation Fri Oct 23 09:38:59 2020

MICRO Calibration Report

Serial Number: Micro1
 Tool Model: ProbeL
 Performed: Thu Apr 02 16:23:04 2020

Caliper Calibration: Gain=3.980 Offset=4.705

	Low Cal	High Cal
References	9.500	13.000
Readings	0.308	2.032

1.5" Calibration: Gain=24.134 Offset=-1.000

	Low Cal	High Cal
References	0.000	20.000
Readings	0.004	0.832

2" Calibration: Gain=28.000 Offset=-0.800

	Low Cal	High Cal
References	0.000	20.000
Readings	0.022	0.793

Gamma Ray Calibration Report

Serial Number: GR5
 Tool Model: OPEN
 Performed: Thu Jul 30 23:16:16 2020

Calibrator Value: 1.0 GAPI

Background Reading:	0.0	cps
Calibrator Reading:	1.0	cps

Sensitivity: 0.6000 GAPI/cps