



**COMPENSATED
DENSITY/NEUTRON
PE/LOG**

Company VAL ENERGY, INC.
Well HOUSE RANCH #2-30
Field UNKNOWN
County COWLEY
State KANSAS

Company VAL ENERGY, INC.
Well HOUSE RANCH #2-30
Field UNKNOWN
County COWLEY State KANSAS

Location: 1170' FSL & 2140' FEL
API #: 15-035-24724-0000
Other Services
DIL
ML
Elevation
K.B. 1287
D.F. 1285
G.L. 1278

Date	10/23/20		
Run Number	ONE		
Depth Driller	3474		
Depth Logger	3468		
Bottom Logged Interval	3448		
Top Log Interval	300		
Casing Driller	8 5/8" @ 342		
Casing Logger	342		
Bit Size	7 7/8"		
Type Fluid in Hole	CHEMICAL MUD		
Density / Viscosity	9.3/38		
pH / Fluid Loss	10.0/8.0		
Source of Sample	FLOWLINE		
Rm @ Meas. Temp	3.1 @ 60F		
Rmf @ Meas. Temp	2.32 @ 60F		
Rmc @ Meas. Temp	3.72 @ 60F		
Source of Rmf / Rmc	MEASURED		
Rm @ BHT	1.67 @ 111F		
Time Circulation Stopped	2 HOURS		
Time Logger on Bottom	////		
Maximum Recorded Temperature	111F		
Equipment Number	1523		
Location	HAYS, KANSAS		
Recorded By	GUS PFANENSTIEL		
Witnessed By	JOE BAKER		

<<< Fold Here >>>

All interpretations are opinions based on inferences from electrical or other measurements and we cannot and do not guarantee the accuracy or correctness of any interpretation, and we shall not, except in the case of gross or willful negligence on our part, be liable or responsible for any loss, costs, damages, or expenses incurred or sustained by anyone resulting from any interpretation made by any of our officers, agents or employees. These interpretations are also subject to our general terms and conditions set out in our current Price Schedule.

Comments

THANK YOU FOR USING ELI WIRELINE, HAYS, KS. (785) 628-6395

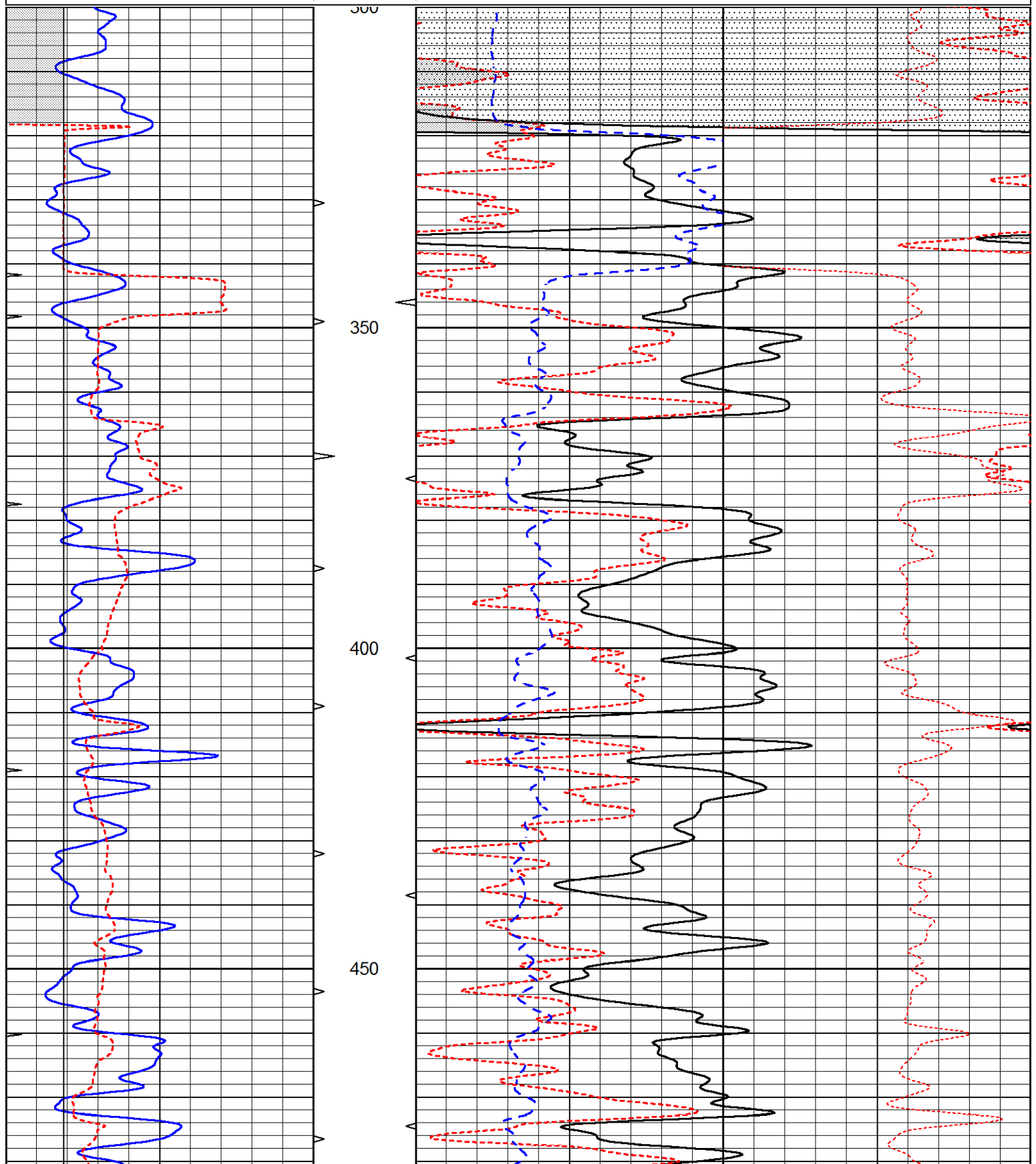
DIRECTIONS:WINFIELD EAST TO COWLEY 1 RD, SOUTH TO 212 RD,
EAST 3 MILES, SOUTH 1 MILE, EAST AT TANK BATTERY

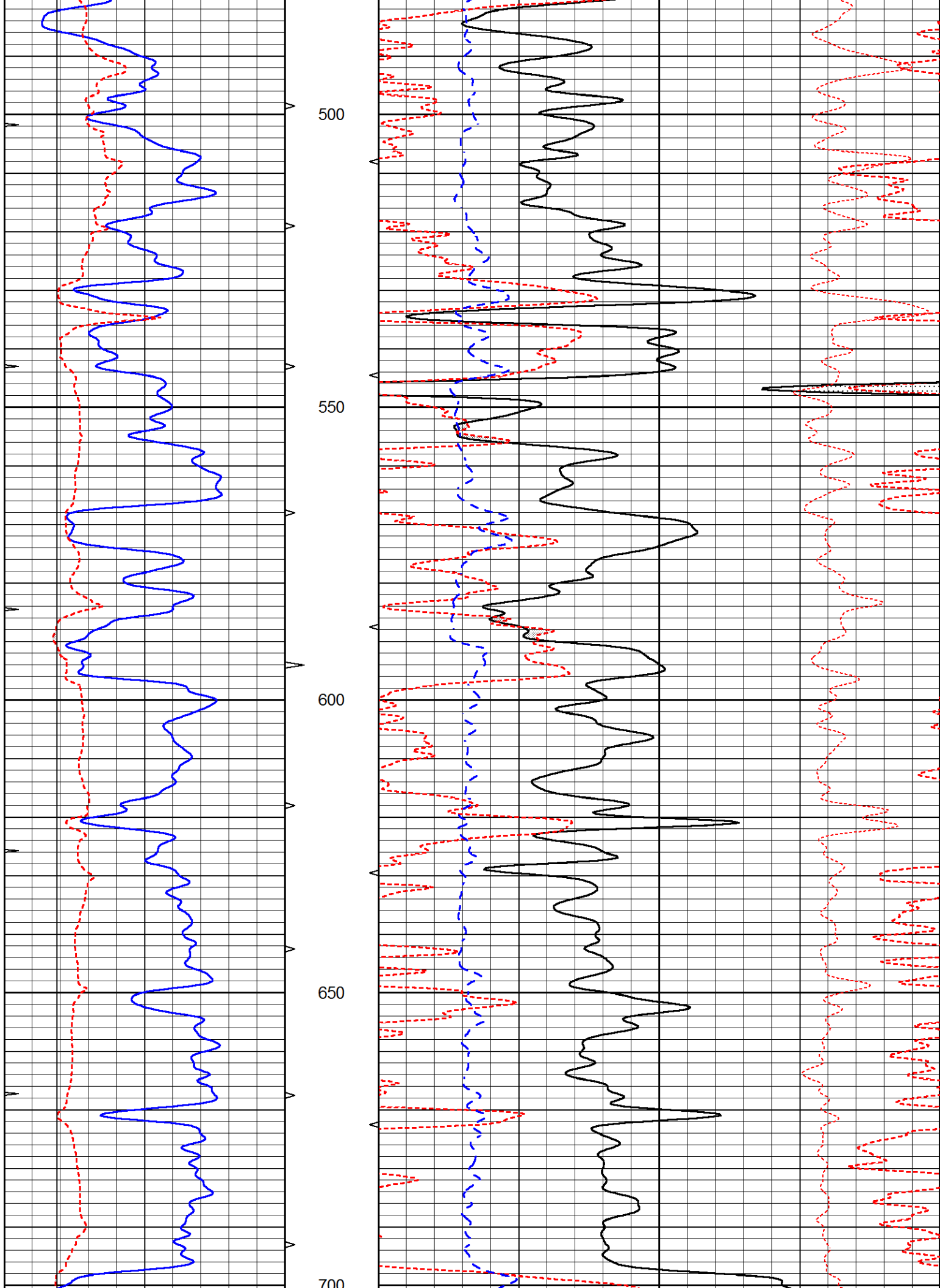


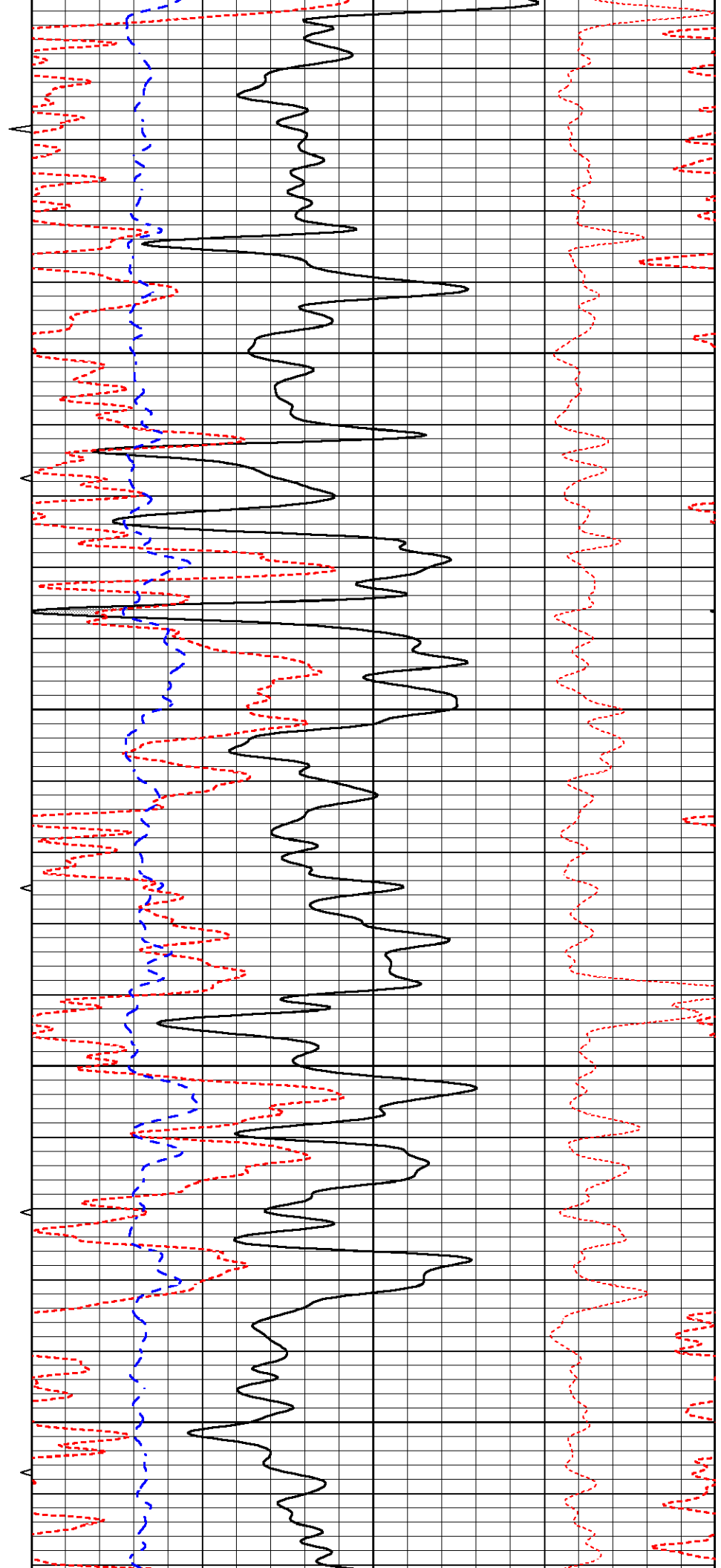
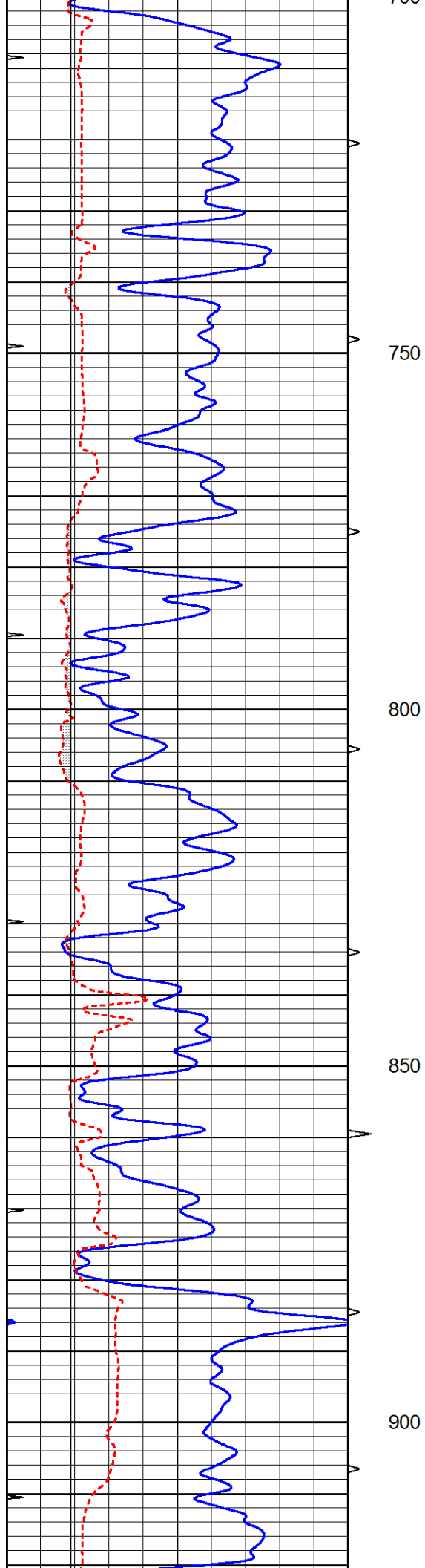
MAIN PASS

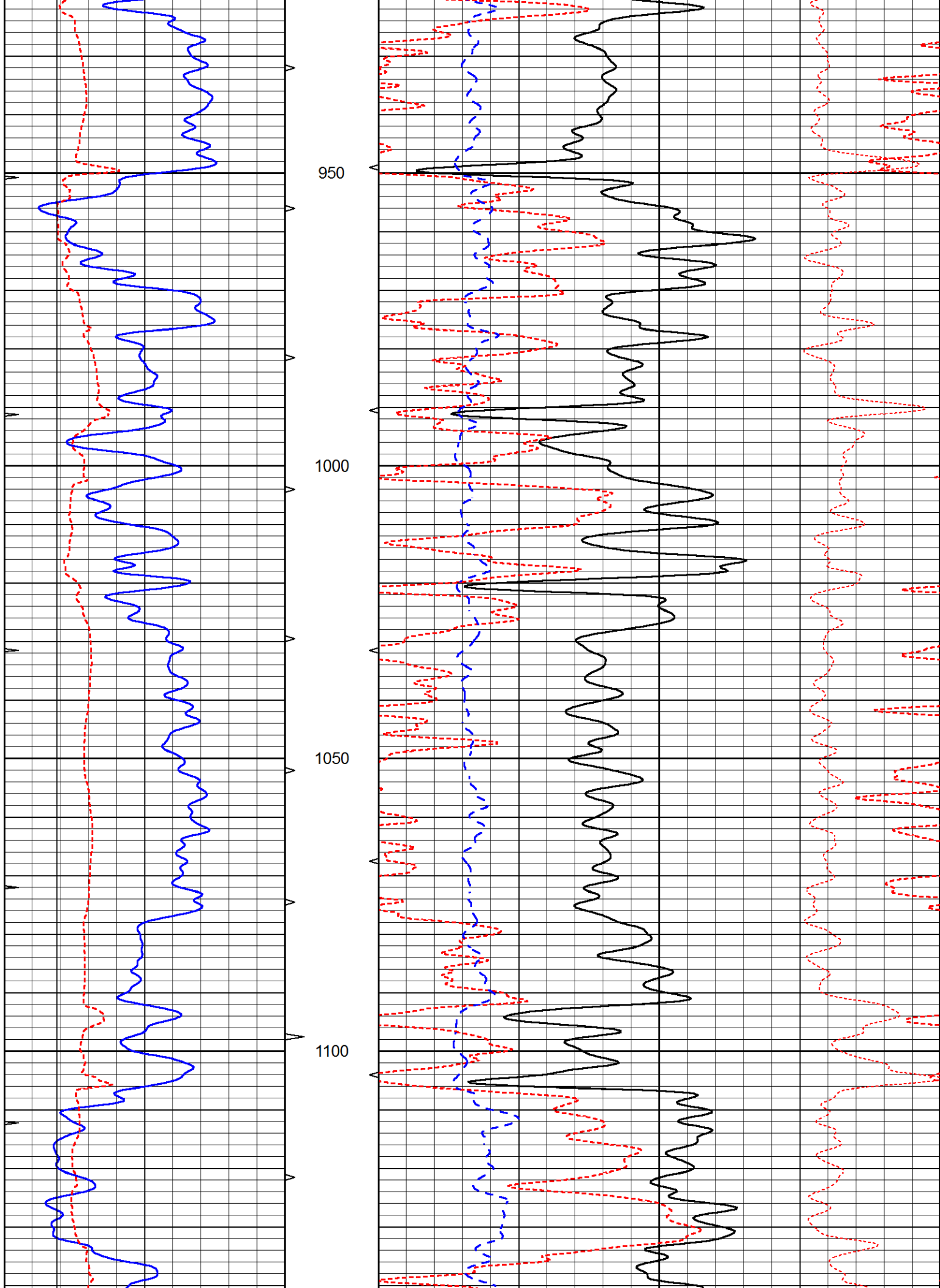
Database File 5034pe.db
 Dataset Pathname pass4PE
 Presentation Format _ldt_neu
 Dataset Creation Fri Oct 23 08:31:30 2020
 Charted by Depth in Feet scaled 1:240

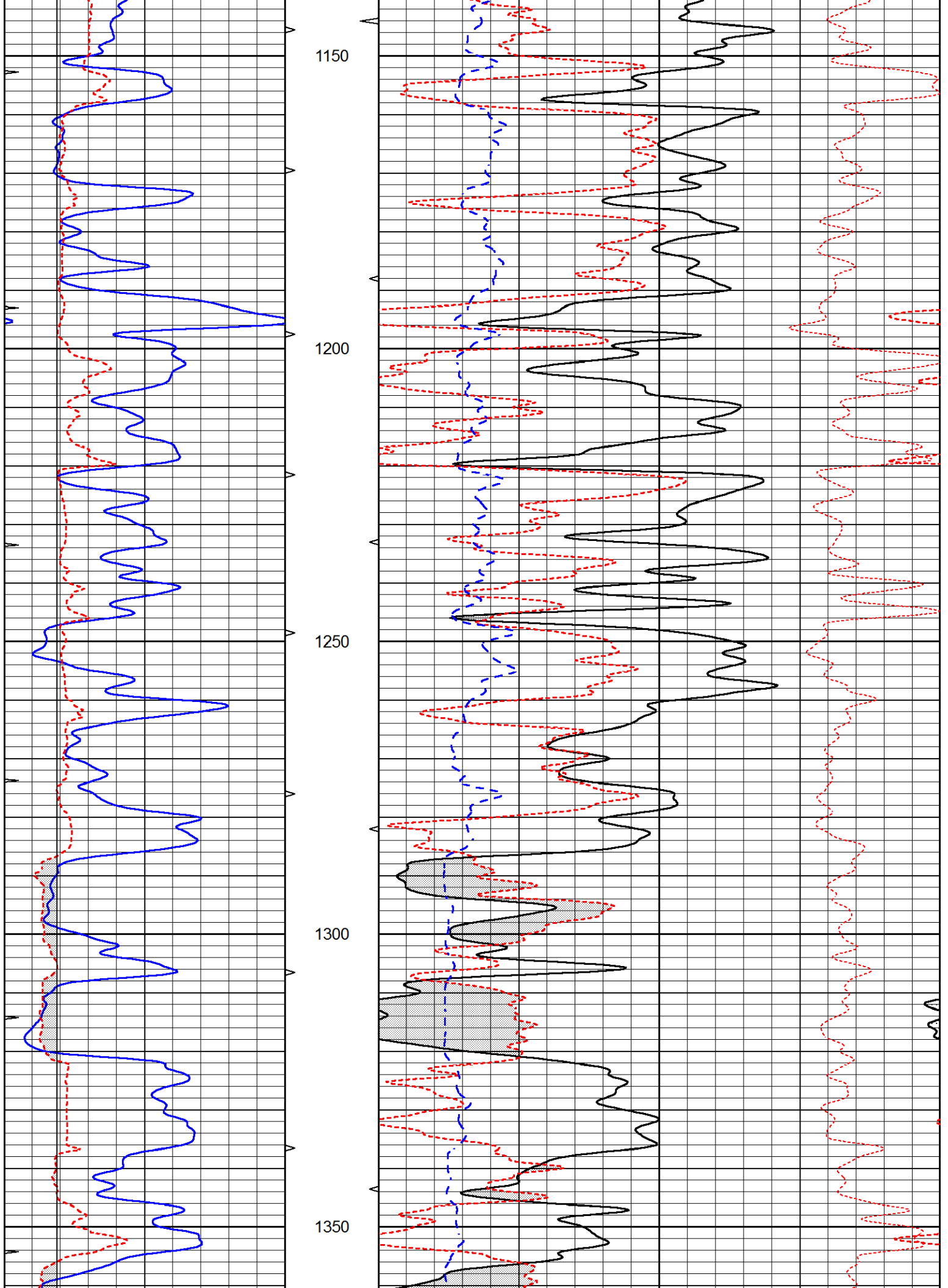
0	GAMMA RAY (GAPI)	150	ABHV	30	COMPENSATED DENSITY (pu)		-10
6	CALIPER (in)	16	10 (ft3)	0	COMPENSATED NEUTRON (pu)		-10
0	MINMK	20	TBHV	0	PE	10	-0.25
			0 (ft3)	10	CORRECTION (g/cc)		0.25

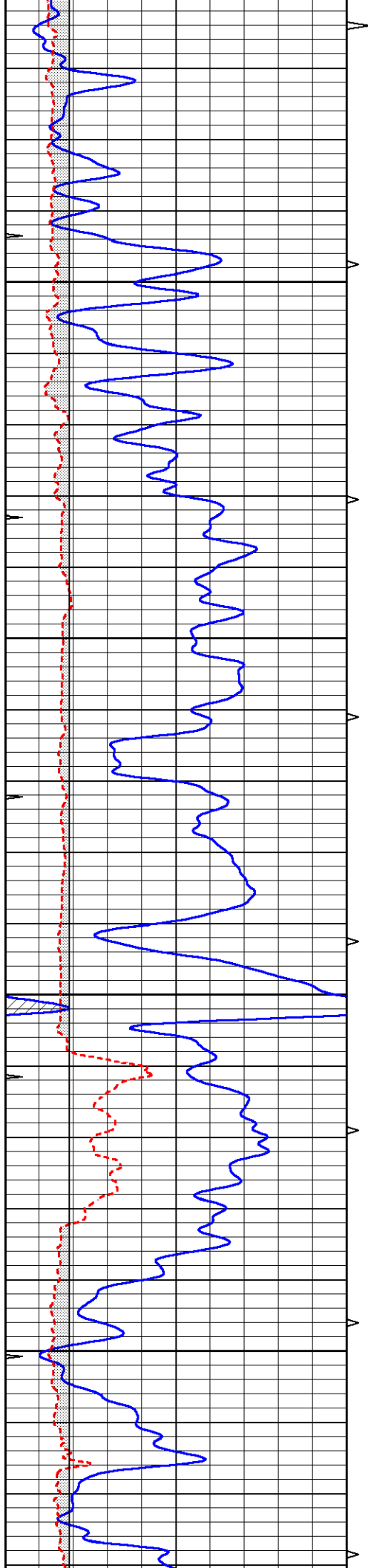










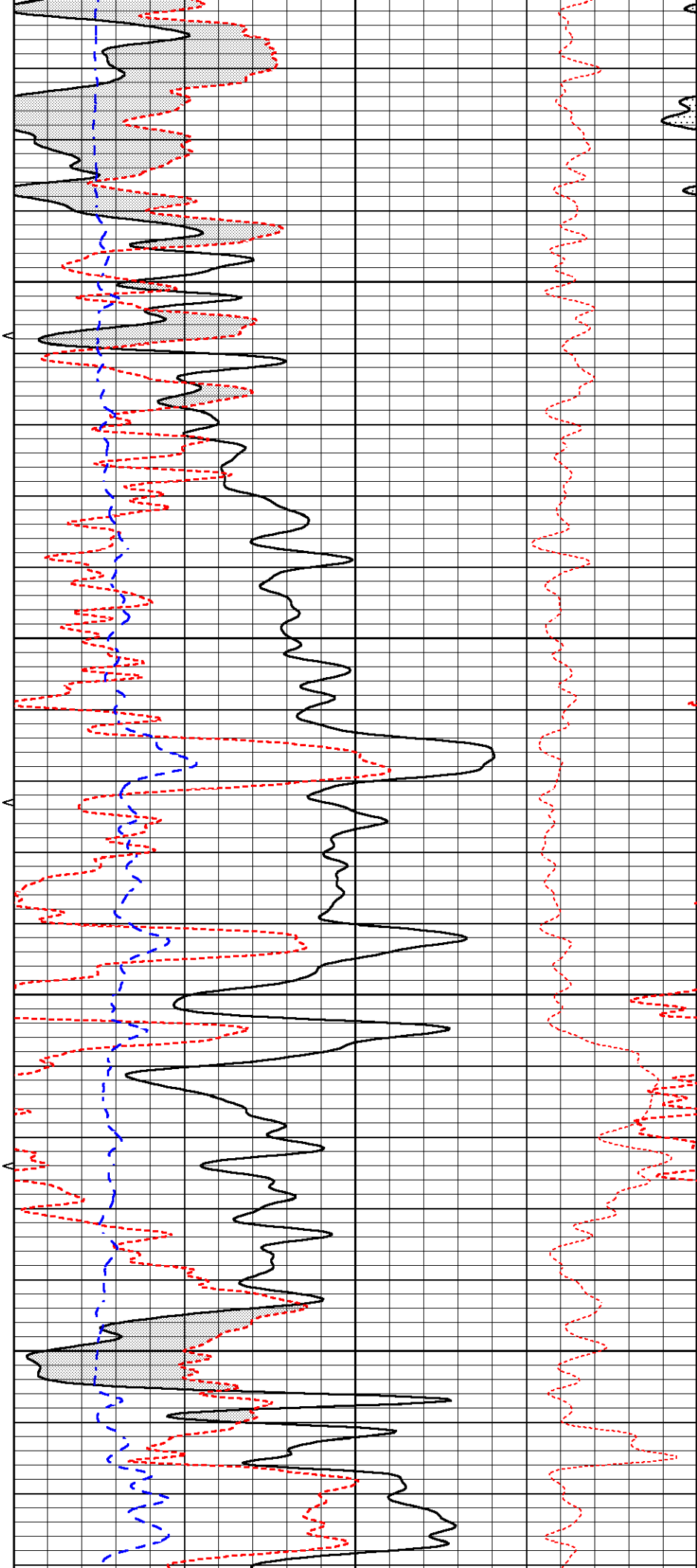


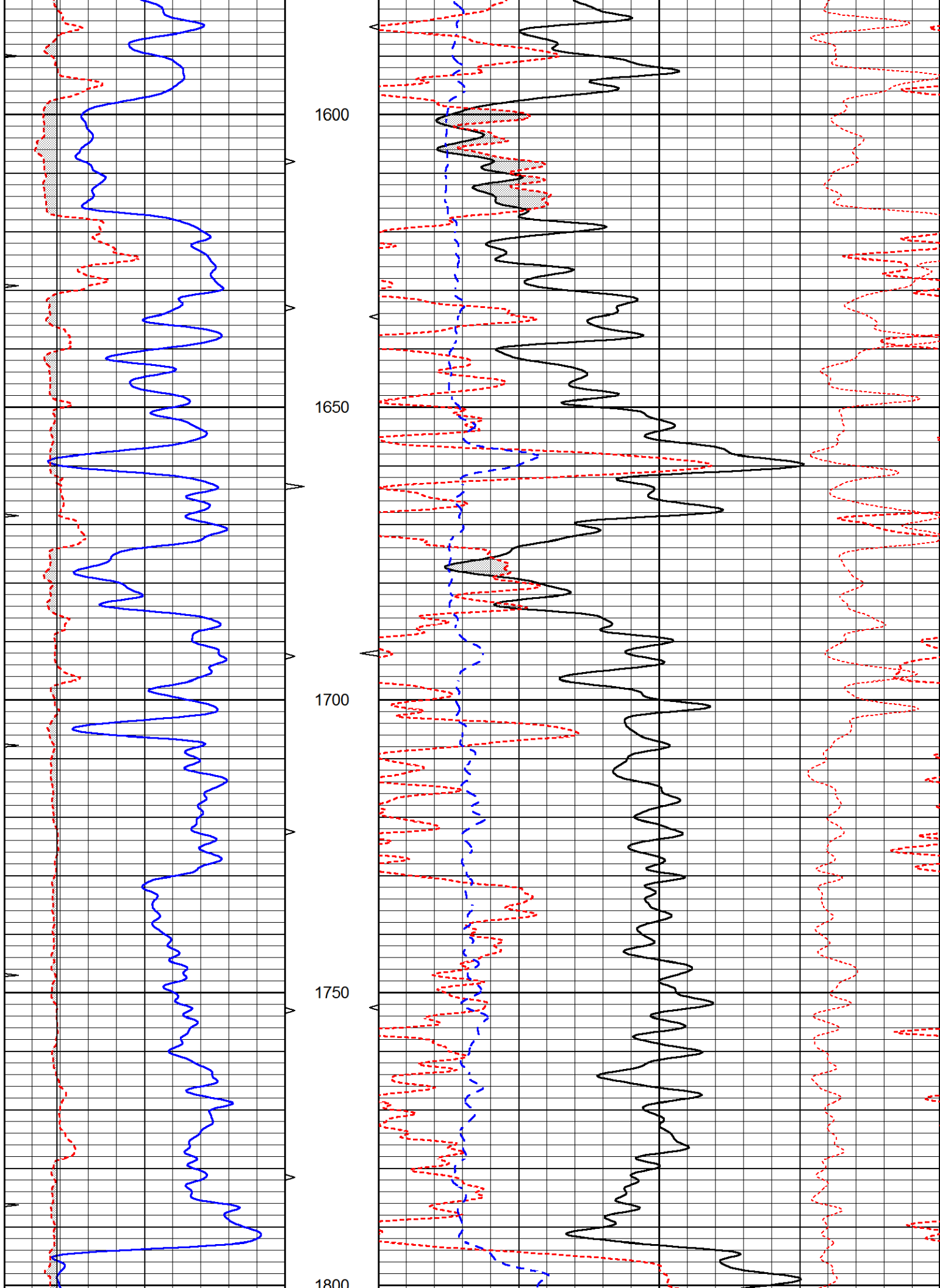
1400

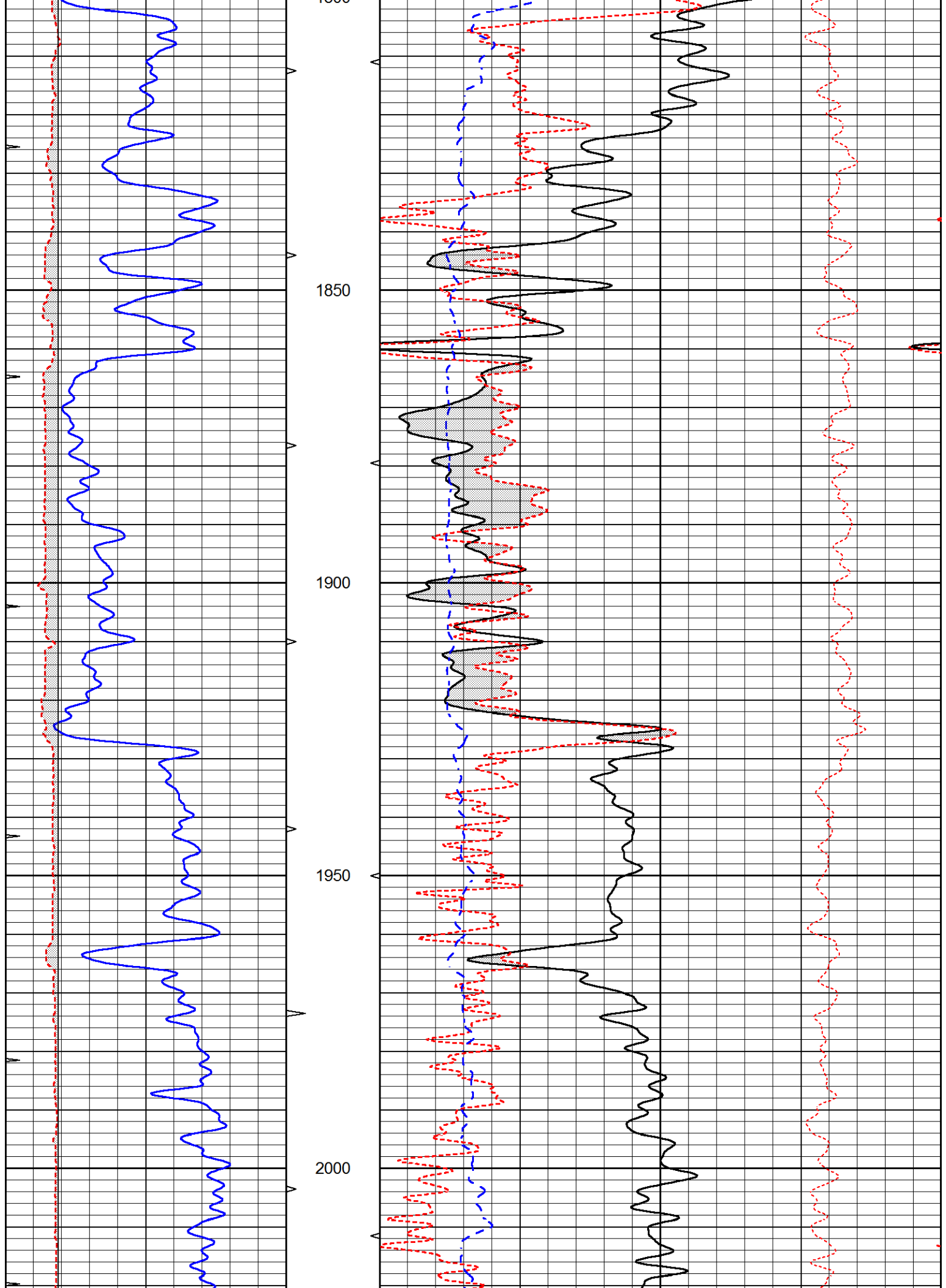
1450

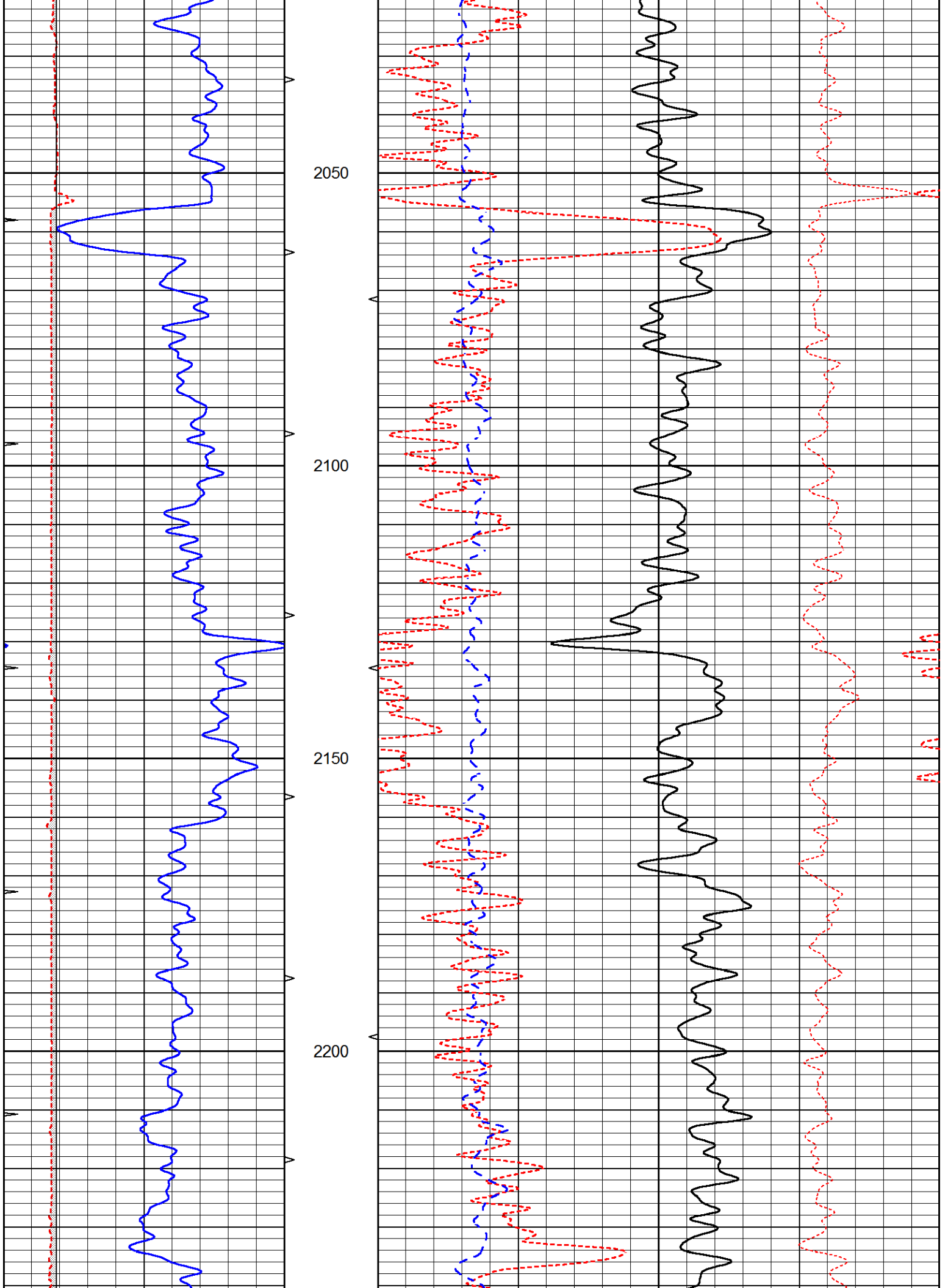
1500

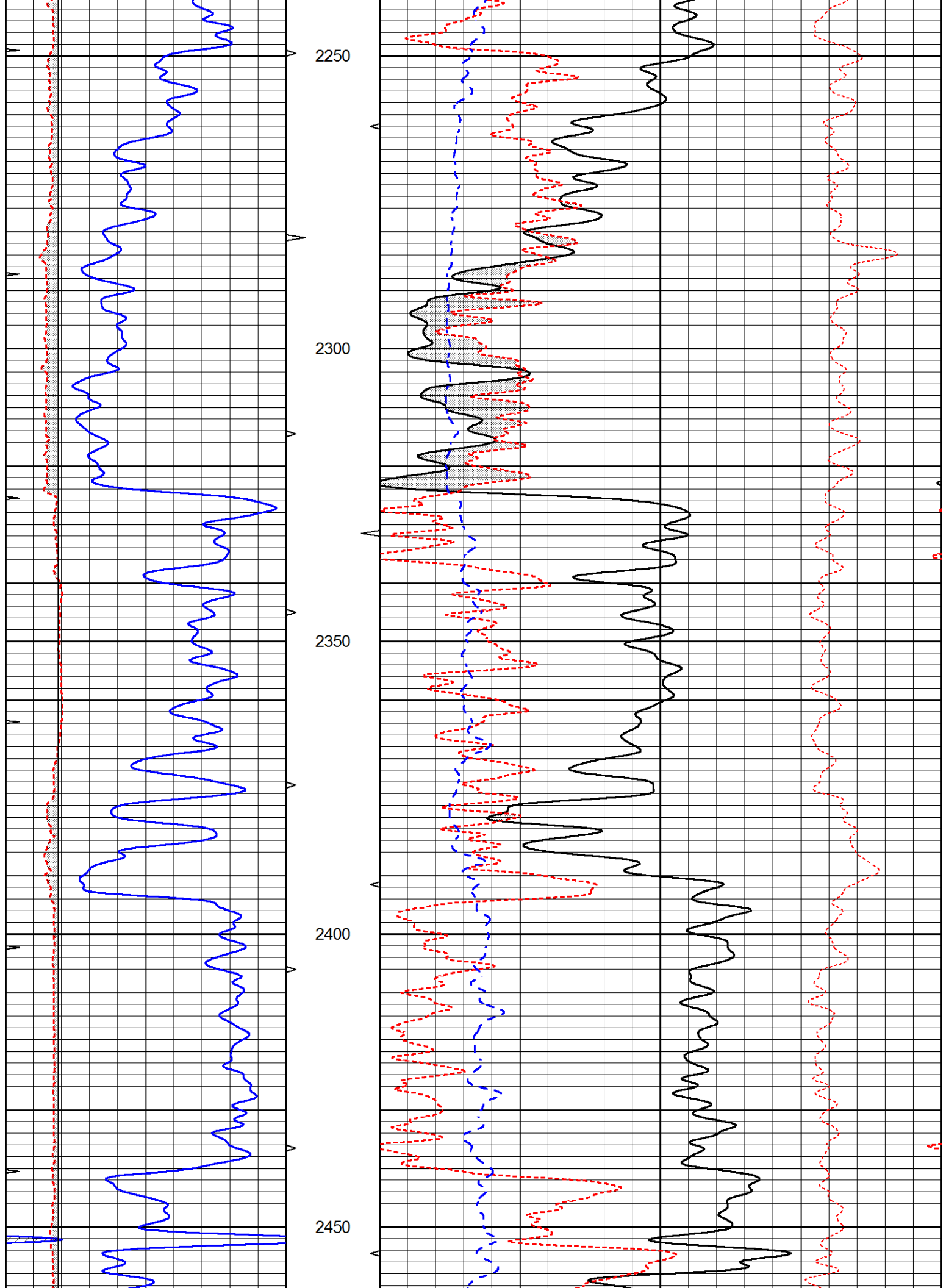
1550

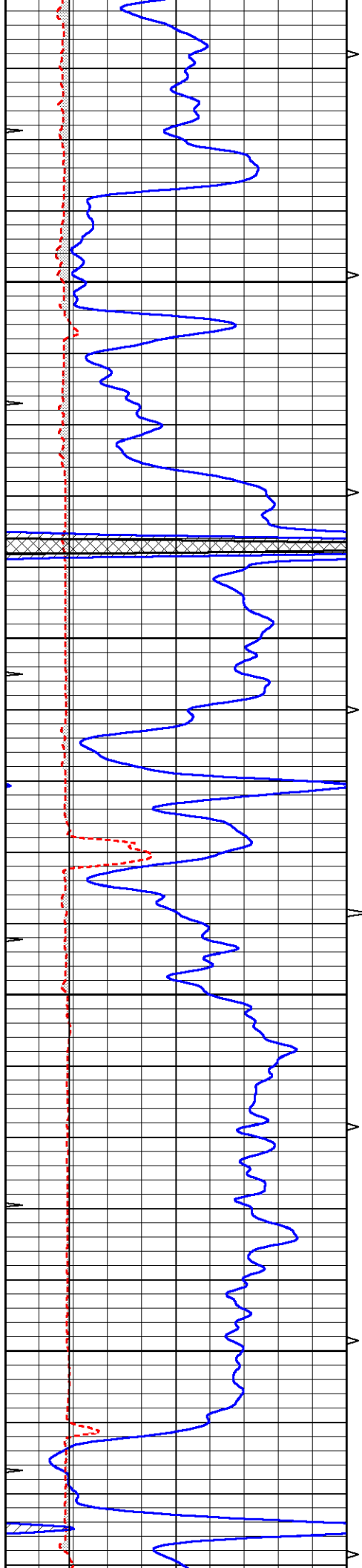










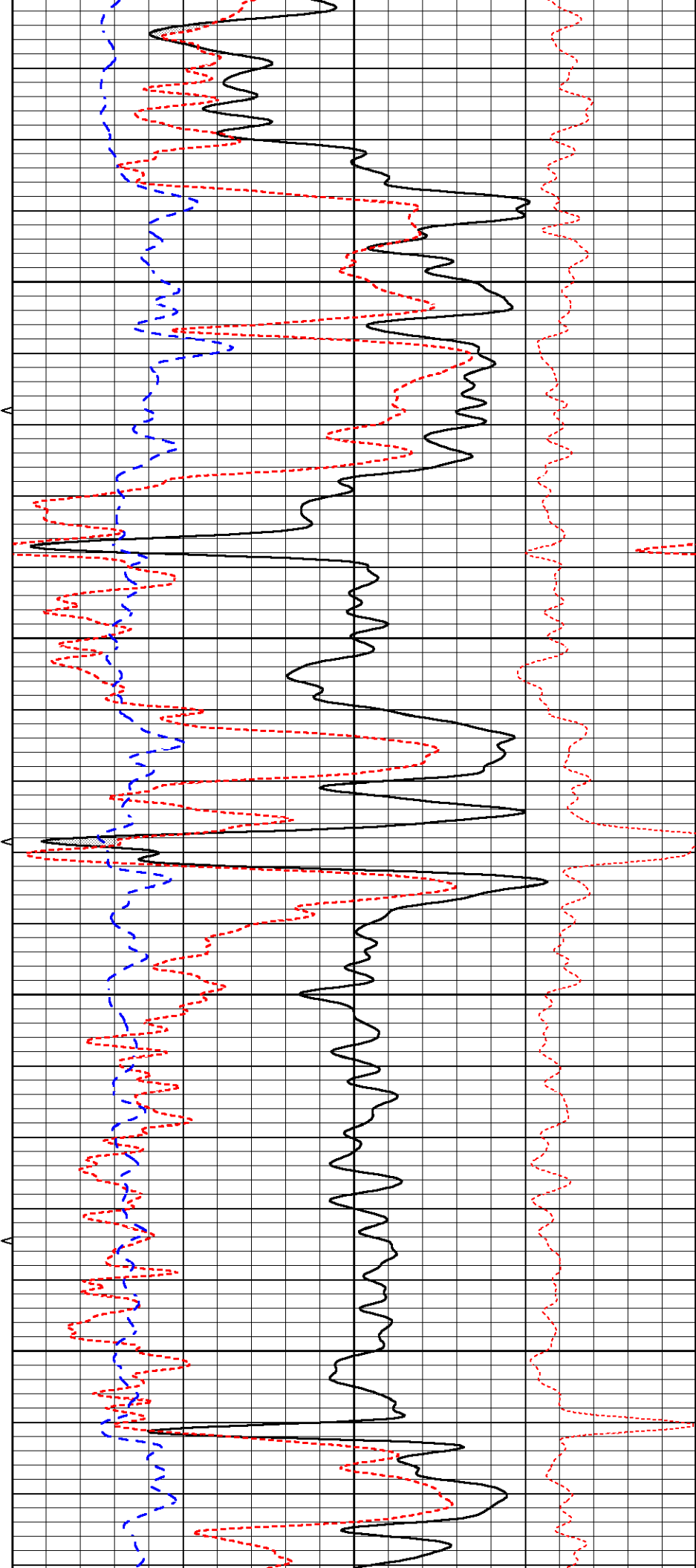


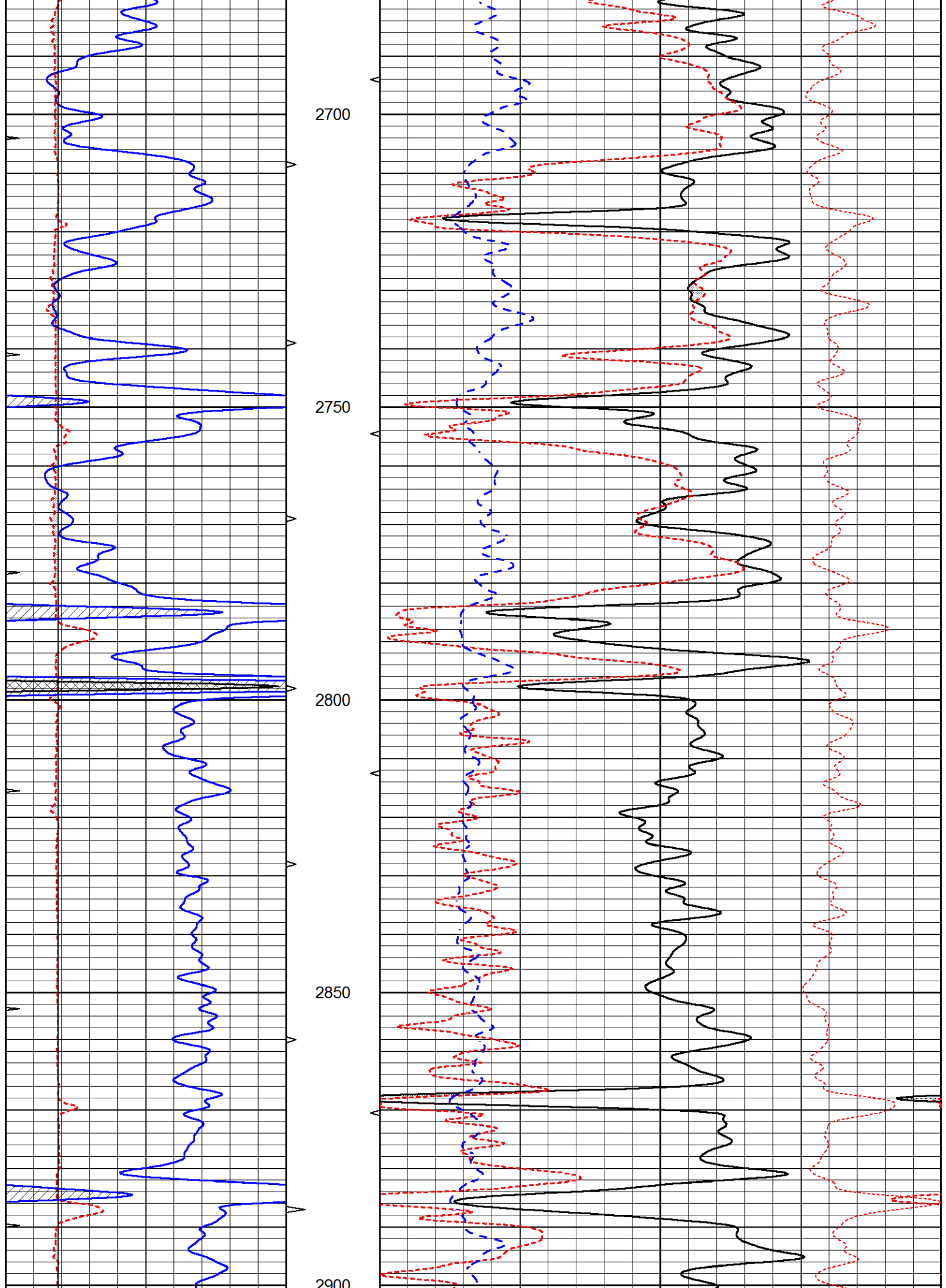
2500

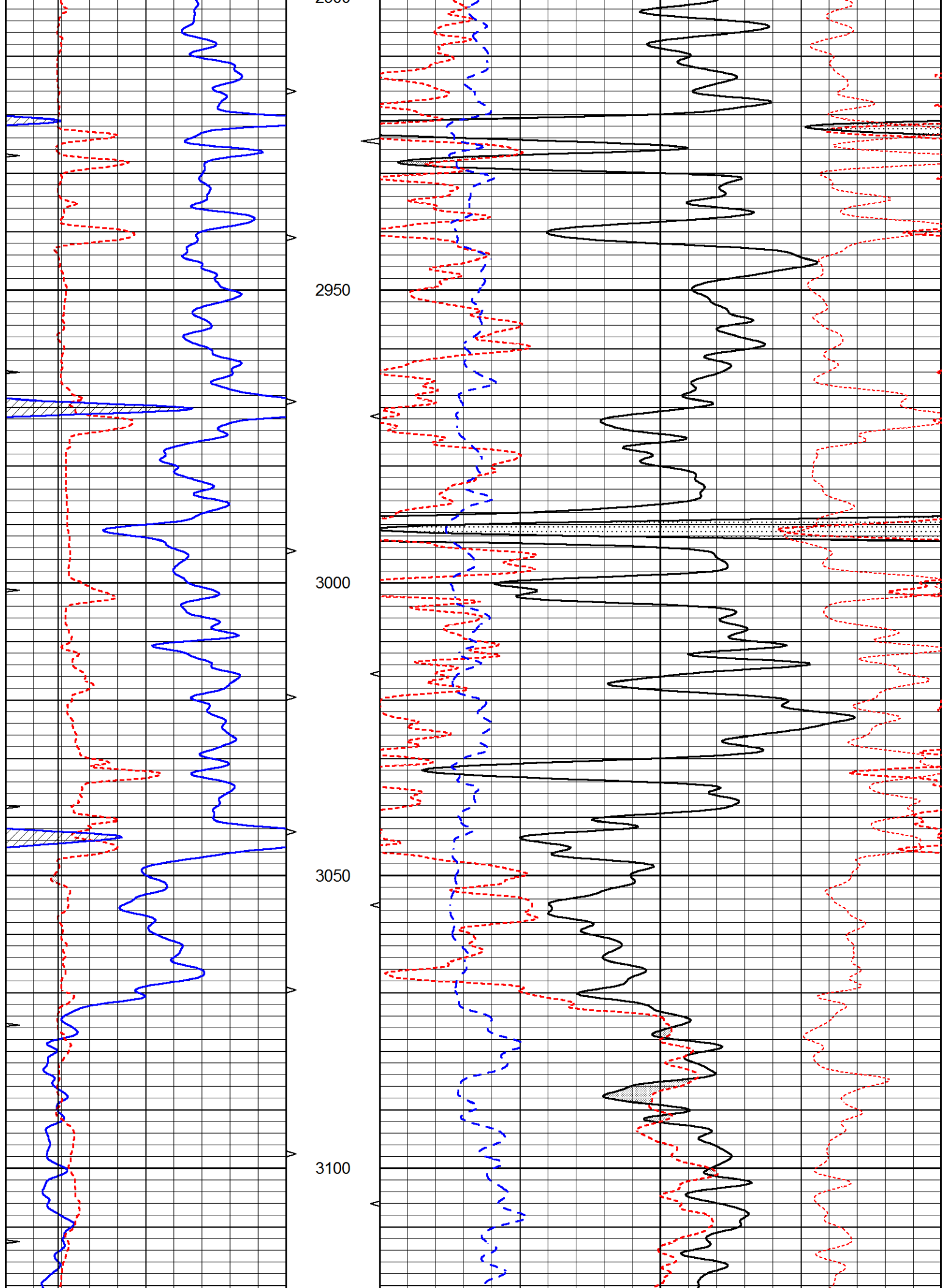
2550

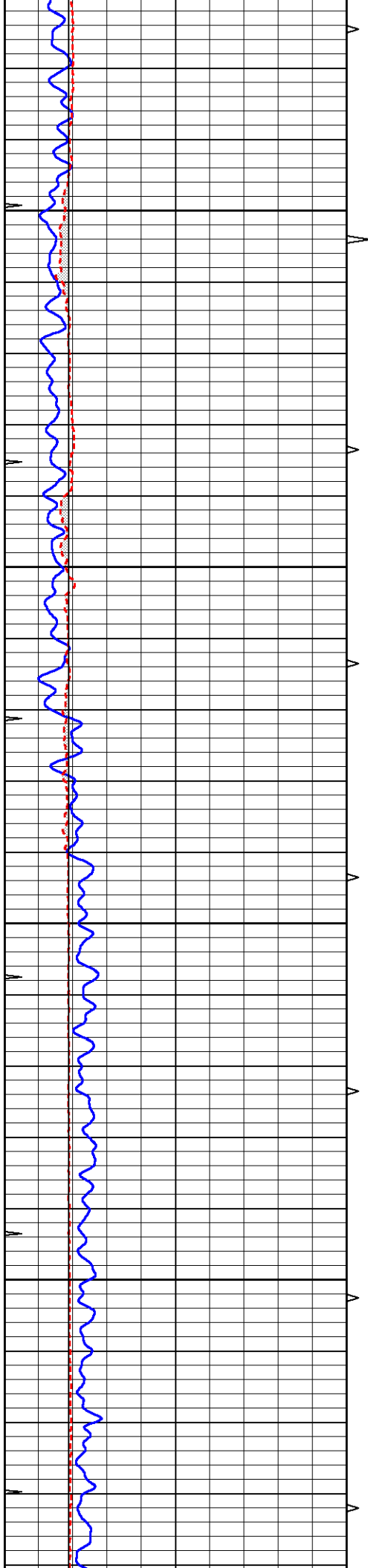
2600

2650







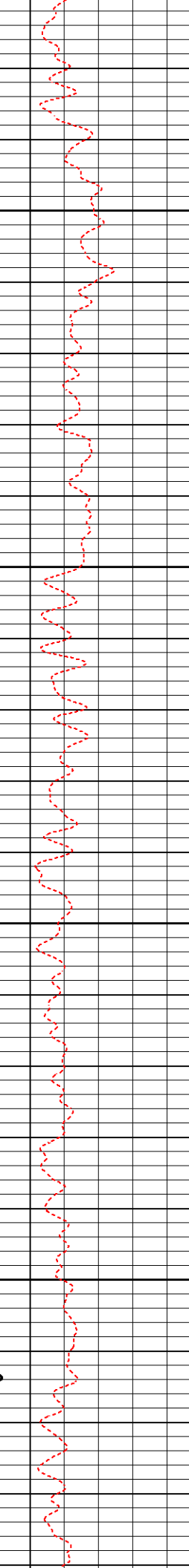
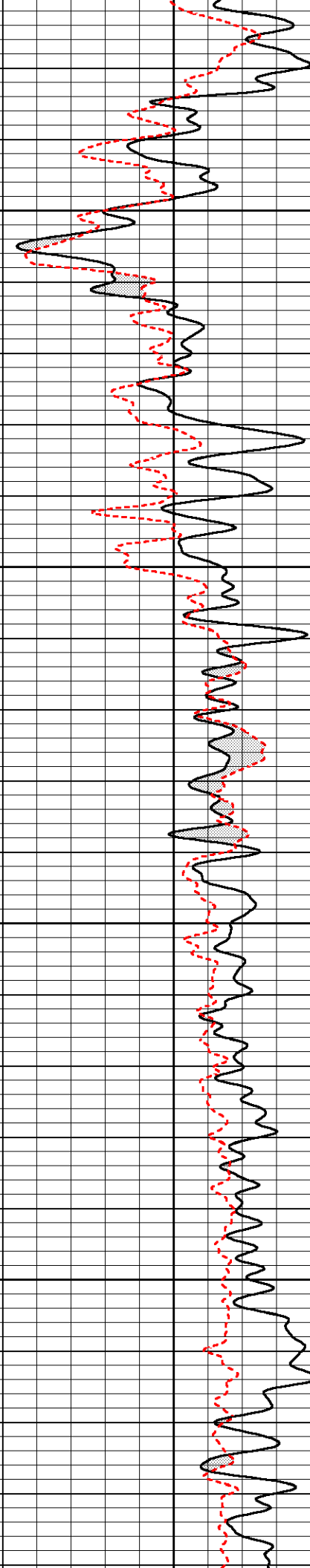
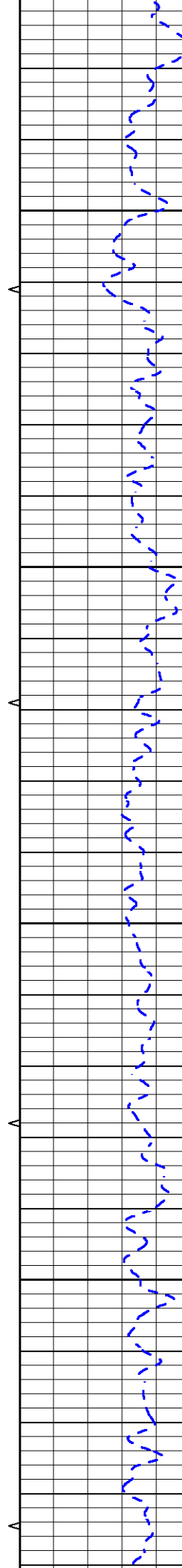


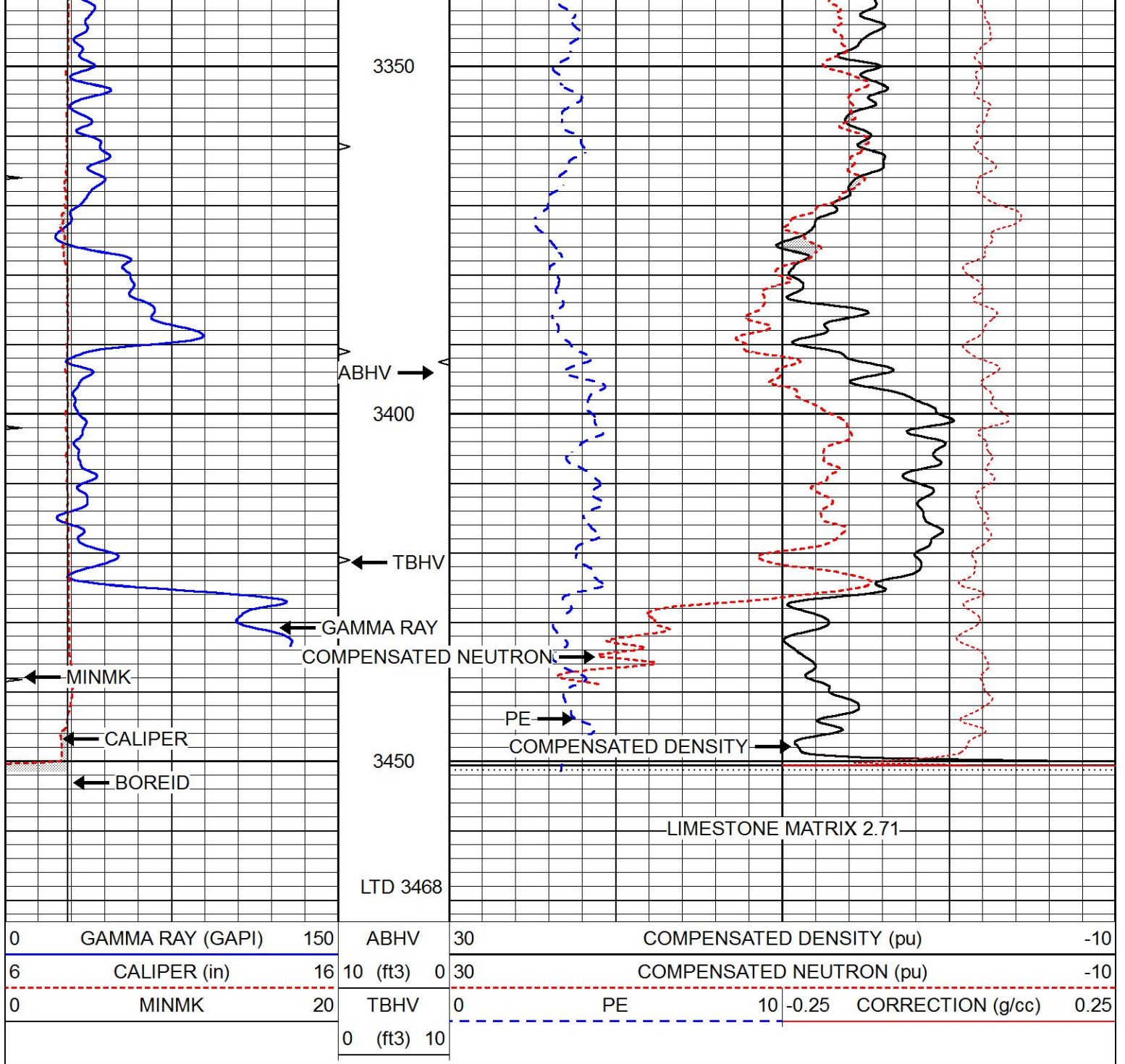
3150

3200

3250

3300

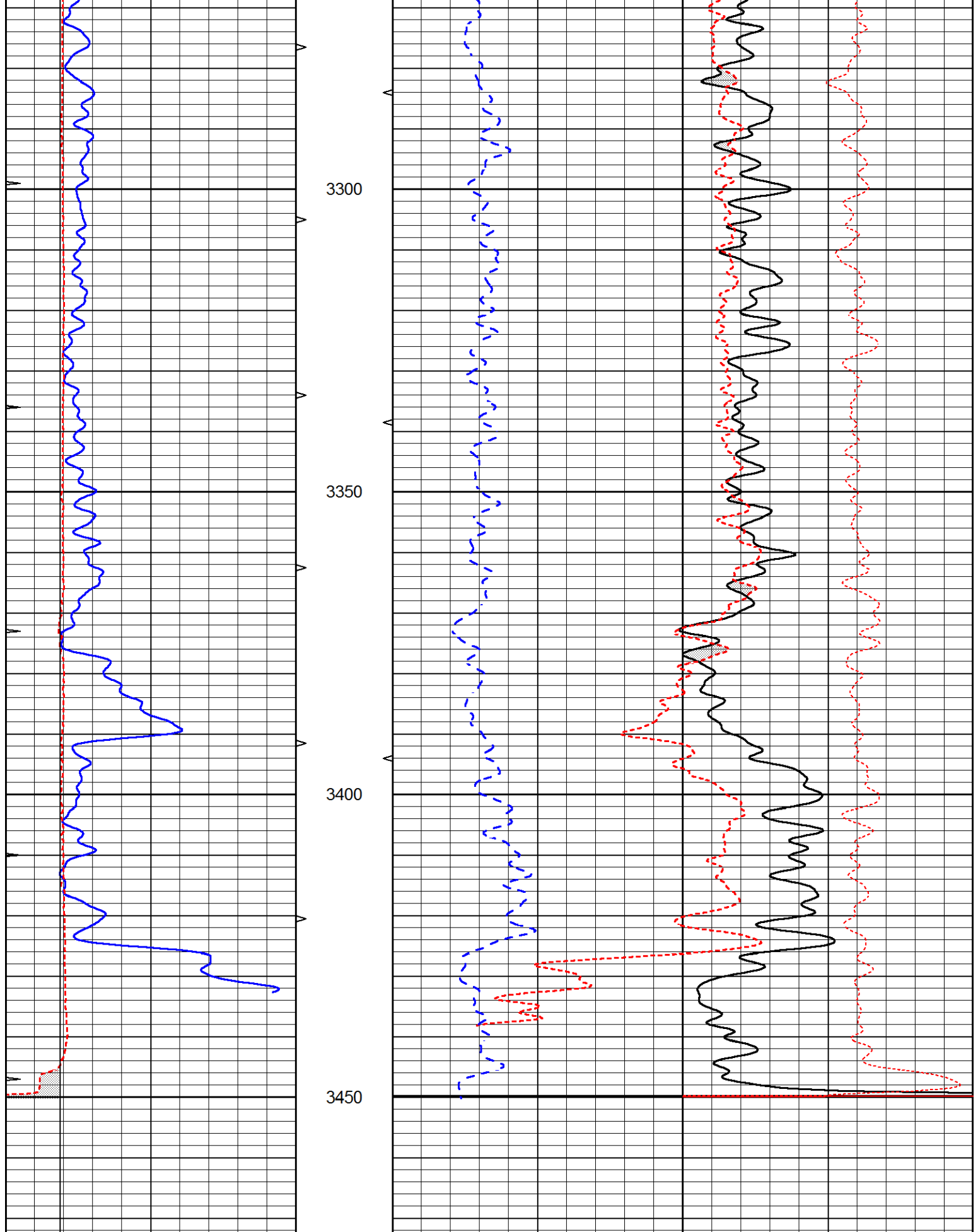




REPEAT SECTION

Database File 5034pe.db
 Dataset Pathname pass2RP
 Presentation Format _ldt_neu
 Dataset Creation Fri Oct 23 08:39:17 2020
 Charted by Depth in Feet scaled 1:240

0	GAMMA RAY (GAPI)	150	ABHV	30	COMPENSATED DENSITY (pu)	-10
6	CALIPER (in)	16	10 (ft3) 0	30	COMPENSATED NEUTRON (pu)	-10
0	MINMK	20	TBHV	0	PE	10 -0.25 CORRECTION (g/cc) 0.25
			0 (ft3) 10			



0	GAMMA RAY (GAPI)	150	ABHV	30	COMPENSATED DENSITY (pu)	-10
6	CALIPER (in)	16	10 (ft3)	0 30	COMPENSATED NEUTRON (pu)	-10
0	MINMK	20	TBHV	0	PE	10 -0.25
					CORRECTION (g/cc)	0.25

Calibration Report

Database File 5034pe.db
 Dataset Pathname pass2RP
 Dataset Creation Fri Oct 23 08:39:17 2020

Dual Induction Calibration Report

Serial-Model: PROBE8-DILG
 Surface Cal Performed: Mon Sep 10 14:28:35 2018
 Downhole Cal Performed: Mon Sep 10 14:28:38 2018
 After Survey Verification Performed: Mon Sep 10 14:28:40 2018

Surface Calibration

Loop:	Readings			References			Results	
	Air	Loop		Air	Loop		m	b
Deep	0.015	0.648	V	0.000	400.000	mmho/m	620.000	0.000
Medium	0.029	0.796	V	0.000	464.000	mmho/m	590.000	-12.000
Internal:	Zero	Cal		Zero	Cal		m	b
Deep	0.017	0.657	V	0.000	400.000	mmho/m	625.153	-10.619
Medium	0.016	0.757	V	0.000	464.000	mmho/m	625.992	-9.739

Downhole Calibration

	Readings			References			Results	
	Zero	Cal		Zero	Cal		m'	b'
Deep	0.000	0.000	mmho/m	2.011	405.777	mmho/m	1.000	0.000
Medium	0.000	0.000	mmho/m	7.590	503.393	mmho/m	1.000	0.000
LL3		7.500	V		1500.000	Ohm-m		
		0.000	V		20.000	Ohm-m		
		-7.200	V		3800.000	mmho-m		

After Survey Verification

	Readings			Targets			Results	
	Zero	Cal		Zero	Cal		m'	b'
Deep	0.000	0.000	mmho/m	0.000	0.000	mmho/m	0.000	0.000
Medium	0.000	0.000	mmho/m	0.000	0.000	mmho/m	0.000	0.000
LL3		1.000	Ohm-m		1.000	Ohm-m		
		0.000	Ohm-m		0.000	Ohm-m		
		1.000	mmho-m		1.000	mmho-m		

Litho Density Calibration Report

Serial: 002N Model: PRB

Master Calibration

Performed Tue Mar 10 15:08:00 2020

	Background	Magnesium	Aluminum	Aluminum+Fe	
Window 1	780.1	6981.9	2088.6	1871.2	cps
Window 2	718.6	5898.2	1813.8	1664.1	cps
Window 3	580.0	2989.5	1088.0	1039.1	cps
Window 4	172.8	175.7	175.3	173.5	cps
Long Space	0.0	5179.6	1095.2	945.5	cps
Short Space	1.1	1228.6	821.2	690.4	cps
Rho		1.7100	2.5900	0.0000	g/cc
Pe		2.0000	2.7500	5.7900	

Rib Angle : 45.5 Rib Slope : 1.016 Density/Spine Ratio : 0.548
 Spine Angle : 75.5 Spine Slope : 3.857 Spine Intercept : -18.9

Before Survey Verification

Performed Wed Dec 31 18:00:00 1969

Window 1	0.0	0.0	0.0	0.0	cps
Window 2	0.0	0.0	0.0	0.0	cps
Window 3	0.0	0.0	0.0	0.0	cps
Window 4	0.0	0.0	0.0	0.0	cps
Long Space	0.0	0.0	0.0	0.0	cps
Short Space	0.0	0.0	0.0	0.0	cps
Measured Rho		0.0000	0.0000	0.0000	g/cc
Measured Correction		0.0000	0.0000	0.0000	g/cc
Measured Pe			0.0000	0.0000	

After Survey Verification

Performed Wed Dec 31 18:00:00 1969

Window 1	0.0	0.0	0.0	0.0	cps
Window 2	0.0	0.0	0.0	0.0	cps
Window 3	0.0	0.0	0.0	0.0	cps
Window 4	0.0	0.0	0.0	0.0	cps
Long Space	0.0	0.0	0.0	0.0	cps
Short Space	0.0	0.0	0.0	0.0	cps
Measured Rho		0.0000	0.0000	0.0000	g/cc
Measured Correction		0.0000	0.0000	0.0000	g/cc
Measured Pe			0.0000	0.0000	

Compensated Neutron Calibration Report

Serial Number: 6I
Tool Model: G

CALIBRATION

Detector	Readings	Target	Normalization
Short Space	1.00 cps	1.00 cps	1.0000
Long Space	1.00 cps	1.00 cps	1.0000

PRE-SURVEY VERIFICATION

	Detector	Readings	Measured	Target
1)	Short Space	cps		
	Long Space	cps	pu	pu
2)	Short Space	cps		
	Long Space	cps	pu	
3)	Short Space	cps		
	Long Space	cps	pu	

POST-SURVEY VERIFICATION

	Detector	Readings	Measured	Target
1)	Short Space	cps		
	Long Space	cps	pu	pu
2)	Short Space	cps		
	Long Space	cps	pu	pu
3)	Short Space	cps		
	Long Space	cps	pu	

5)

Short Space
Long Space

cps
cps

pu
pu

pu
pu

Gamma Ray Calibration Report

Serial Number:	GR6	
Tool Model:	OPEN	
Performed:	Thu Jul 30 20:04:35 2020	
Calibrator Value:	150.0	GAPI
Background Reading:	0.0	cps
Calibrator Reading:	276.0	cps
Sensitivity:	0.7500	GAPI/cps