



MIDWEST WIRELINE

GAMMA RAY / CALIPER LOG

Company Carmen Schmitt, Inc.
Well H&V Farms #2-35
Field Schwartz North
County Thomas **State** Kansas

Company Carmen Schmitt, Inc.
Well H&V Farms #2-35
Field Schwartz North
County Thomas
State Kansas

Location: API #: 15-193-21083-00-00
 720' FNL & 2210' FEL
 SEC 35 TWP 8S RGE 31W
 Permanent Datum Ground Level Elevation 2970'
 Log Measured From Kelly Bushing
 Drilling Measured From Kelly Bushing
 Other Services
 DIL/MEL
 K.B. 2980'
 D.F. N/A
 G.L. 2970'

Date	4/1/2021						
Run Number	One						
Type Log	BHV						
Depth Driller	4635'						
Depth Logger	4635'						
Bottom Logged Interval	4606'						
Top Logged Interval	3600'						
Type Fluid In Hole	Chemical						
Salinity, PPM CL	3500						
Density	9.4						
Level	Full						
Max. Rec. Temp. F	122						
Operating Rig Time	3 Hours						
Equipment -- Location	P-108 HAYS						
Recorded By	D. Schmidt						
Witnessed By	Brad Rine						
Borehole Record							
Run No.	Bit	From	To	Size	Wgt.	From	To
One	12.25"	0'	263'	8.625"	23#	0'	263'
Two	7.875"	263'	TD				
Casing Record							

<<< Fold Here >>>

All interpretations are opinions based on inferences from electrical or other measurements and Midwest Wireline LLC cannot and does not guarantee the accuracy or correctness of any interpretation, and Midwest Wireline LLC will not be liable or responsible for any loss, costs, damages, or expenses incurred or sustained by anyone resulting from any interpretation made by any of our officers, agents or employees.

Comments

N/A DENOTES NOT AVAILABLE OR NON-APPLICABLE.

Menlo,
 South to O Rd, West to 35 Rd,
 1 South, 1/2 East,
 South into

Log Measured From: Kelly Bushing 10 Ft. Above Permanent Datum

THANK YOU FOR USING MIDWEST WIRELINE LLC
 785-625-3858

Your Midwest Wireline Crew

Engineer: D. Schmidt
 Operator:
 Operator:
 Operator:

This Log Record Was Witnessed By

Primary Witness: Brad Rine
 Secondary Witness:
 Secondary Witness:
 Secondary Witness:

Sensor	Offset (ft)	Schematic	Description	Length (ft)	O.D. (in)	Weight (lb)
GR	40.58		GR-M&W (233-M&W)	3.00	3.50	50.00
CNLSC CNSSC	37.48 36.73		CNT-M&W (207-MW)	5.50	3.50	100.00
LSD DCAL SSD	28.43 28.42 27.93		CDL-M&W (817-947)	8.50	4.00	250.00
MCAL MI MN	19.83 19.83 19.83		ML-PSIML (PSI-01) GO Micro log tools converted to Simplec electronics	7.58	4.00	65.00
RLL3F RLL3	15.80 15.80					
CILD	8.00		DIL-PSI HIGH TEMP (PSI 971 HT)	18.50	3.50	220.00
CILM	4.70					
SP	0.20					

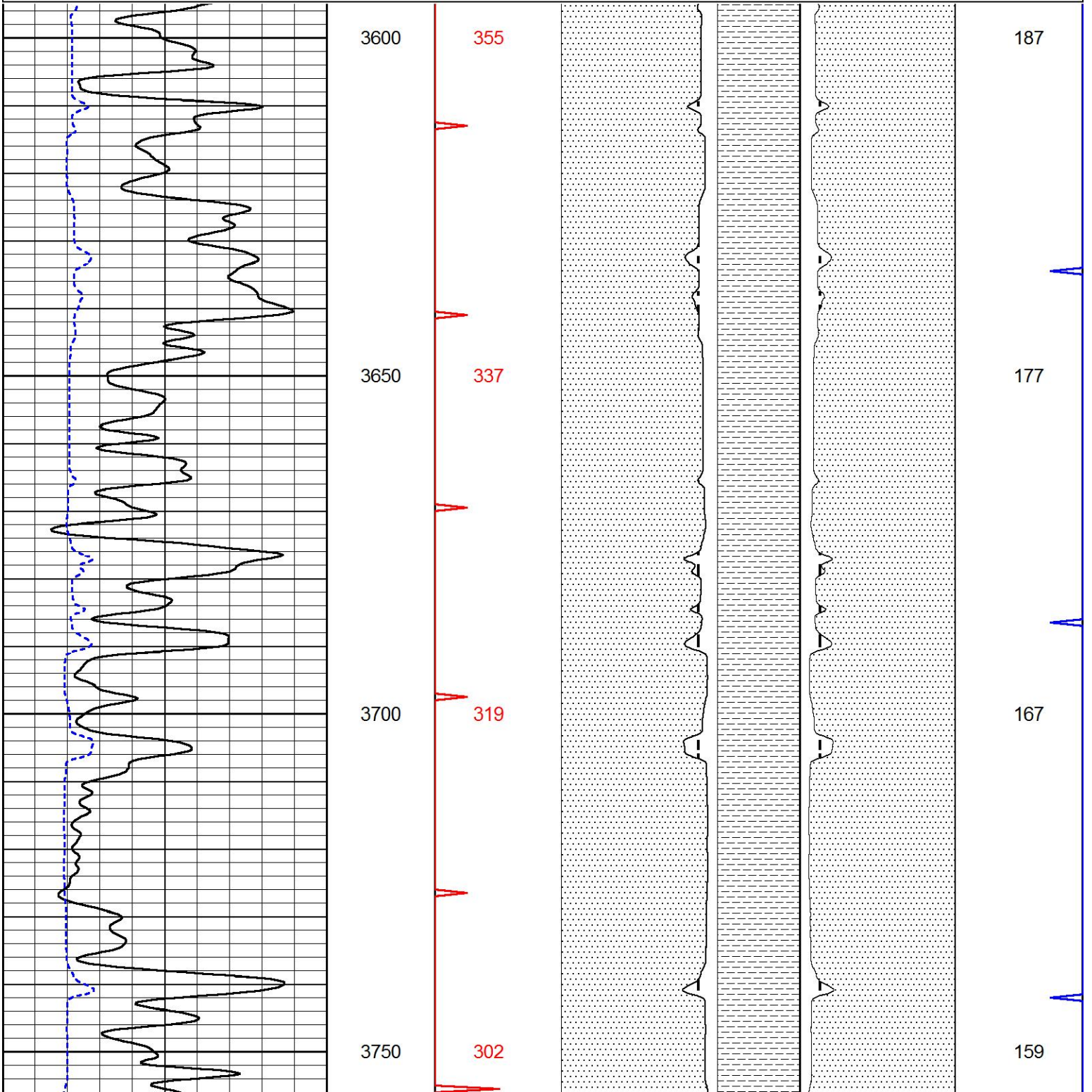
Dataset: carmen schmitt_h v farms 2-35.db: field/well/stkml/pass3.1
 Total length: 43.08 ft
 Total weight: 685.00 lb
 O.D.: 4.00 in

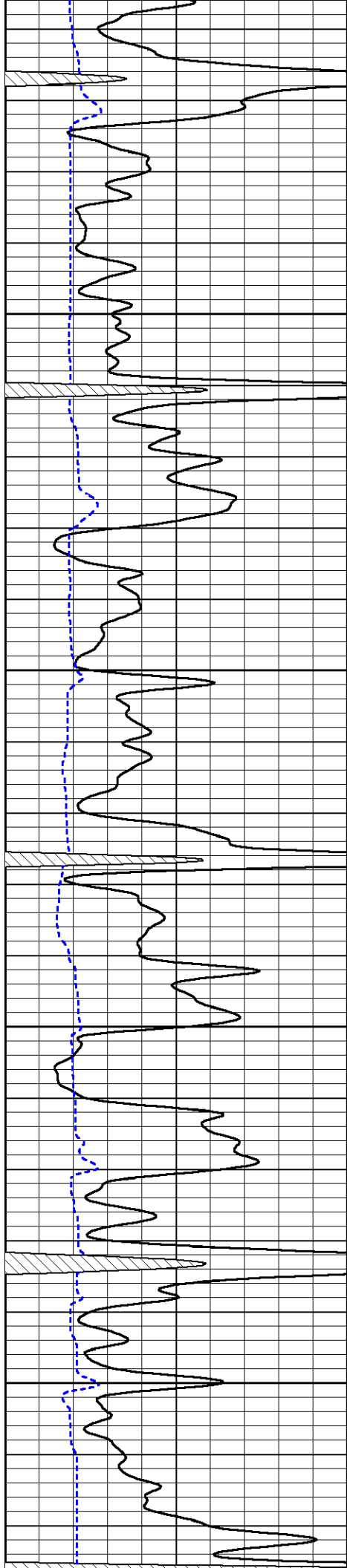


MAIN PASS

Database File carmen schmitt_h v farms 2-35.db
 Dataset Pathname stkml/pass3.1
 Presentation Format bhv5half
 Dataset Creation Thu Apr 01 14:49:56 2021
 Charted by Depth in Feet scaled 1:240

0	Gamma Ray (GAPI)	150	0	Borehole Volume (ft3)	10	10	Annular Volume (ft3)	0
150	GR (GAPI)	300						
6	DCAL (in)	16						





3800

285

150

3850

268

141

3900

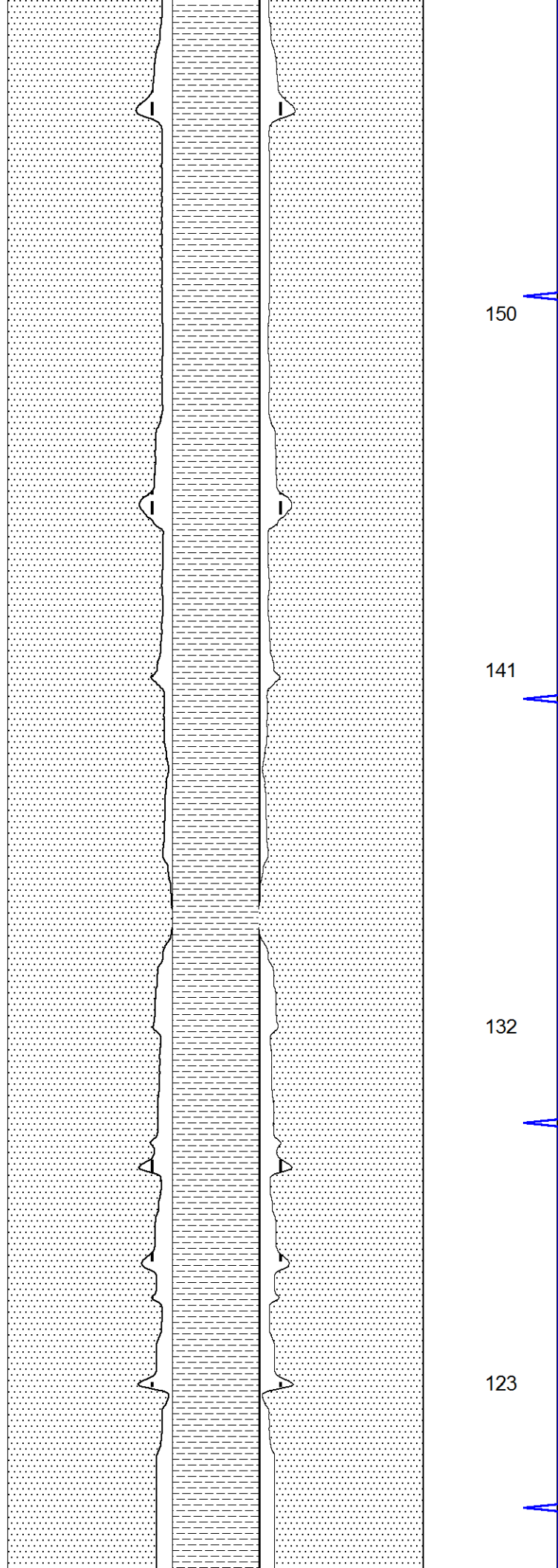
251

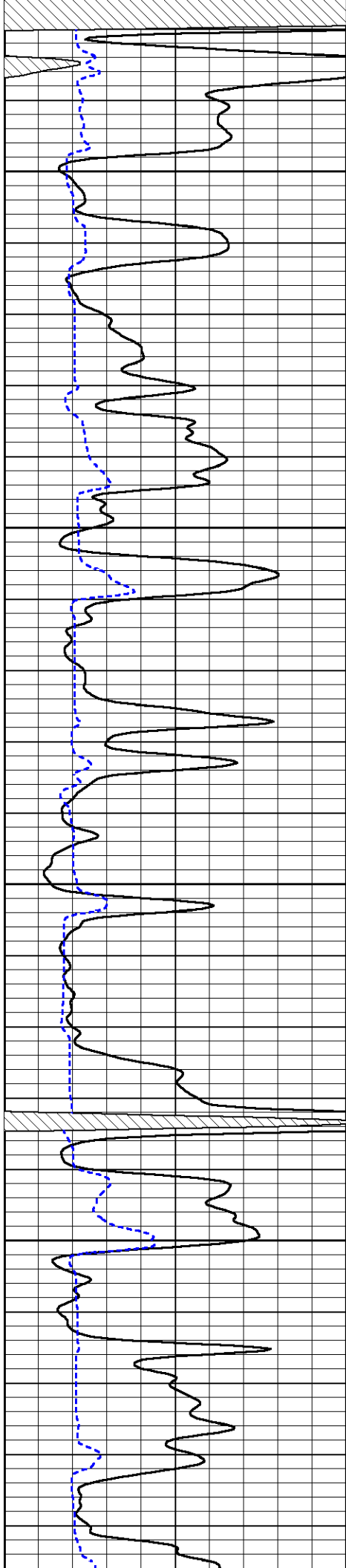
132

3950

234

123





4000

216

4050

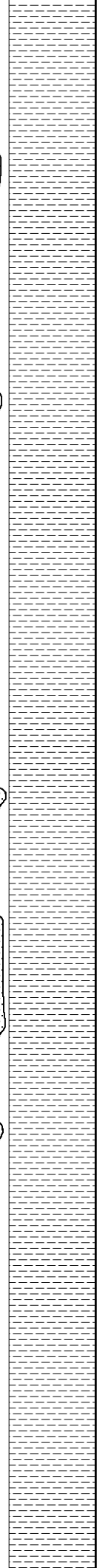
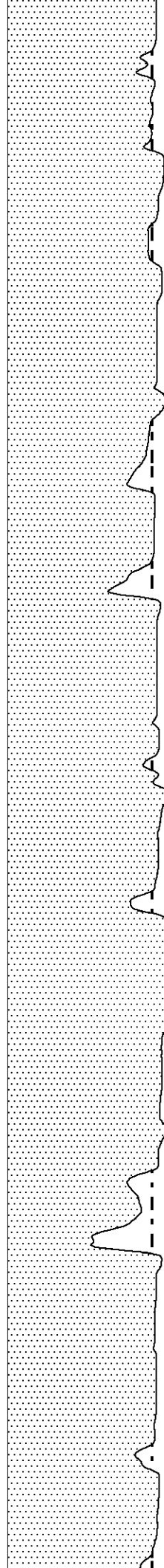
198

4100

180

4150

162

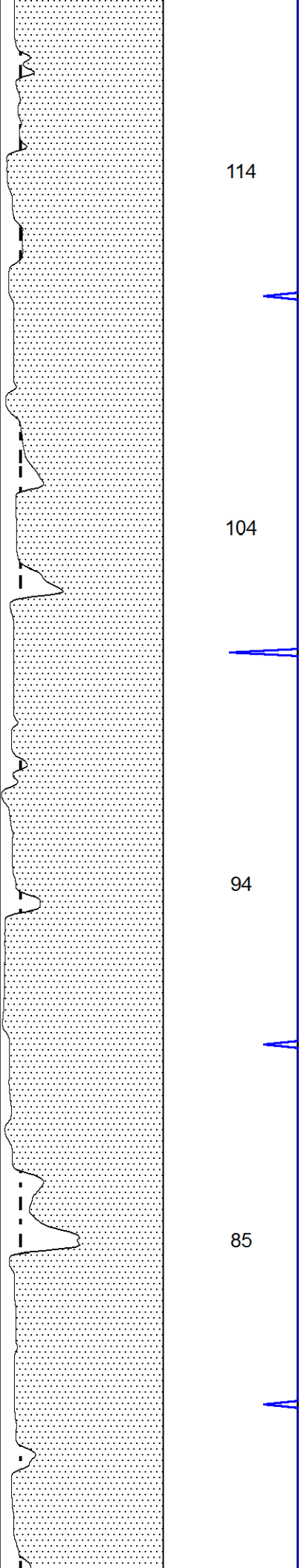


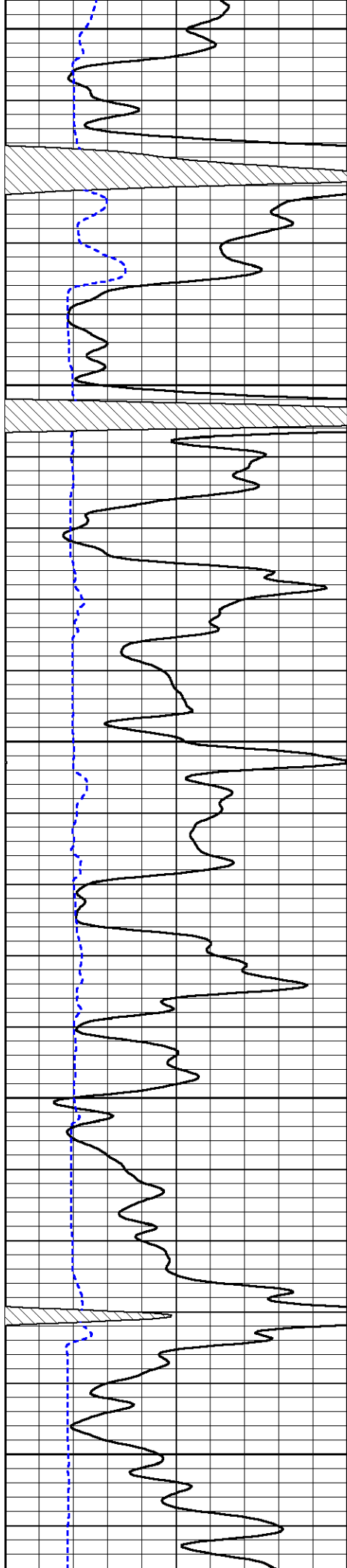
114

104

94

85





4200

144

4250

125

4300

108

4350

90

4400

73

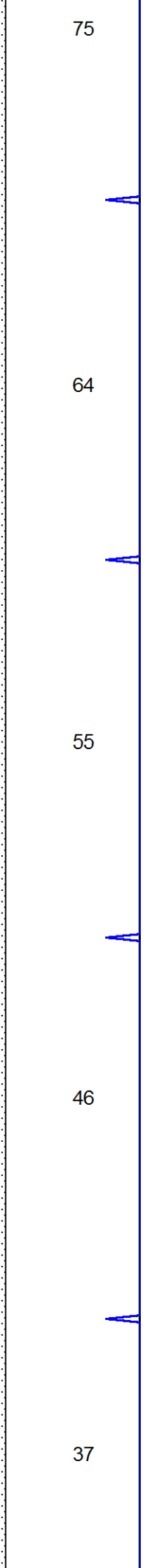
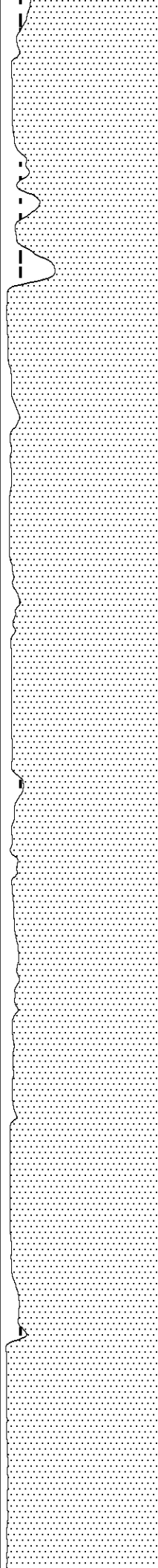
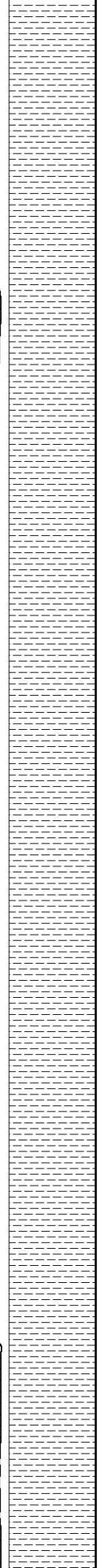
75

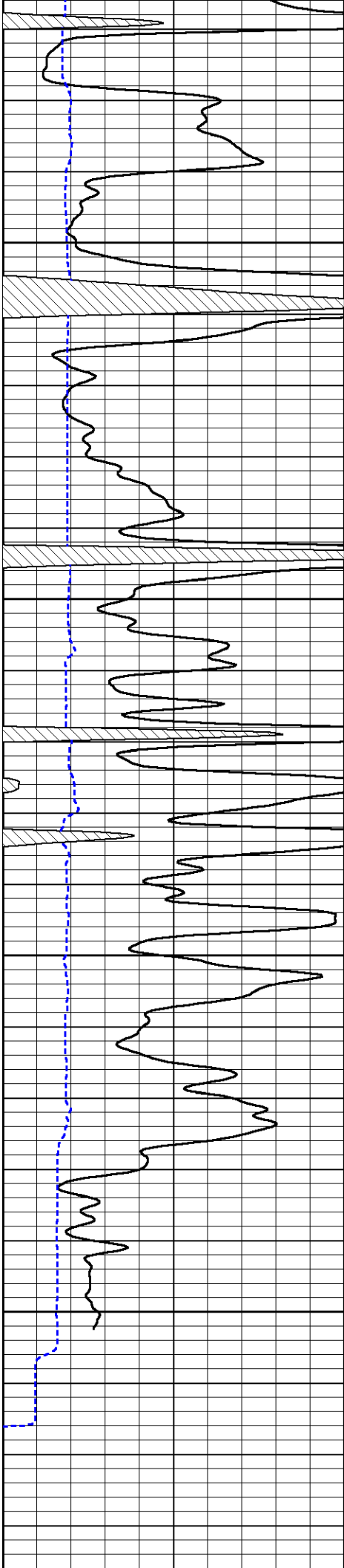
64

55

46

37





4450

56

28

4500

39

19

4550

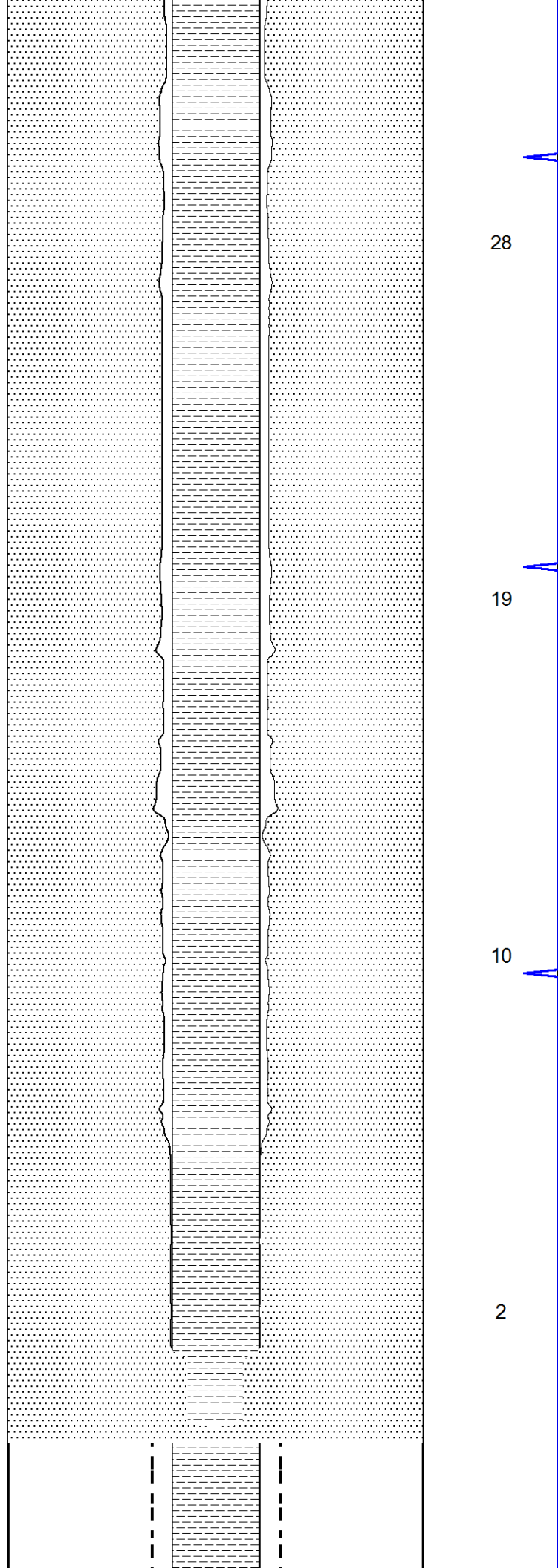
22

10

4600

5

2



0	Gamma Ray (GAPI)	150	0	Borehole Volume (ft3)	10	10	Annular Volume (ft3)	0
150	GR (GAPI)	300						
6	DCAL (in)	16						

Calibration Report

Database File carmen schmitt_h v farms 2-35.db
 Dataset Pathname stkml/pass3.1
 Dataset Creation Thu Apr 01 14:49:56 2021

Dual Induction Calibration Report

Serial-Model: PSI 971 HT-PSI HIGH TEMP
 Surface Cal Performed:

Loop:	Readings		References			Results	
	Air	Loop	Air	Loop		m	b
Deep	167.000	835.000	0.000	255.800	mmho/m	0.430	-29.500
Medium	0.000	1348.000	142.000	255.800	mmho/m	0.375	-29.000

Microlog Calibration Report

Serial-Model: PSI-01-PSIML
 Performed: Wed Mar 3 05:24:59 2021

	Readings		References			Results	
	Zero	Cal	Zero	Cal		m	b
Normal	0.0000	1.0000	0.0000	1.0000	Ohm-m	17000.0000	-1.8500
Inverse	0.0000	1.0000	0.0000	1.0000	Ohm-m	17000.0000	0.0000
Caliper	1.0033	1.0841	5.0000	16.5000	in	142.3500	-138.6500

Compensated Density Calibration Report

Serial-Model: 817-947-M&W
 Source / Verifier: 16955B / 2ci
 Master Calibration Performed: Mon Mar 15 12:10:28 2021
 Before Survey Verification Performed:
 After Survey Verification Performed:

Master Calibration

	Density		Far Detector	Near Detector	
Magnesium	1.755	g/cc	5708.83	5527.94	cps
Aluminum	2.680	g/cc	1049.66	3515.58	cps
Spine Angle = 75.04			Density/Spine Ratio = 0.528		
	Size		Reading		
Small Ring	4.50	in	1.02		
Large Ring	14.50	in	1.23		

Before Survey Verification

Target	Measured
--------	----------

g/cc
g/cc
g/cc

g/cc
g/cc
g/cc

After Survey Verification

Target

Measured

g/cc
g/cc
g/cc

g/cc
g/cc
g/cc

Compensated Neutron Calibration Report

Serial Number: 207-MW
Tool Model: M&W

CALIBRATION

Detector	Readings	Target	Normalization
Short Space	6240.00 cps	1000.00 cps	1.6025
Long Space	460.00 cps	1000.00 cps	1.9500

PRE-SURVEY VERIFICATION

Detector	Readings	Measured	Target
1) Short Space	cps		
Long Space	cps	pu	pu
2) Short Space	cps		
Long Space	cps	pu	
3) Short Space	cps		
Long Space	cps	pu	

POST-SURVEY VERIFICATION

Detector	Readings	Measured	Target
1) Short Space	cps		
Long Space	cps	pu	pu
2) Short Space	cps		
Long Space	cps	pu	pu
3) Short Space	cps		
Long Space	cps	pu	pu

Gamma Ray Calibration Report

Serial Number: 233-M&W
 Tool Model: M&W
 Performed: Wed Mar 3 05:25:33 2021

Calibrator Value: 1.0 GAPI

Background Reading: 0.0 cps
 Calibrator Reading: 1.0 cps

Sensitivity: 0.5500 GAPI/cps



Company Carmen Schmitt, Inc.
 Well H&V Farms #2-35
 Field Schwartz North



MIDWEST WIRELINE

Field	Schwartz North
County	Thomas
State	Kansas