

MICRO
LOG



Company FOURWINDS OIL CORP.
Well MARY A UNIT #1
Field RAY
County PHILLIPS
State KANSAS

Company FOURWINDS OIL CORP.
Well MARY A UNIT #1
Field RAY
County PHILLIPS State KANSAS

Location: API #: 15-147-20756-0000
150' FNL & 1250' FWL
SEC 28 TWP 5S RGE 20W
Permanent Datum GROUND LEVEL Elevation 2221
Log Measured From KELLY BUSHING 8' A.G.L.
Drilling Measured From KELLY BUSHING
Other Services CDL/CNL DIL
Elevation
K.B. 2229
D.F. 2227
G.L. 2221

Date	04/10/20
Run Number	TWO
Depth Driller	3641
Depth Logger	3636
Bottom Logged Interval	3634
Top Log Interval	3100
Casing Driller	8 5/8" @ 221
Casing Logger	221
Bit Size	7 7/8"
Type Fluid in Hole	CHEMICAL MUD
Density / Viscosity	9.2/58
pH / Fluid Loss	11.5/8.0
Source of Sample	FLOWLINE
Rm @ Meas. Temp	1.7 @ 72F
Rmf @ Meas. Temp	1.3 @ 72F
Rmc @ Meas. Temp	2.04 @ 72F
Source of Rmf / Rmc	MEASURED
Rm @ BHT	1.07 @ 114F
Time Circulation Stopped	2 HOURS
Time Logger on Bottom	////
Maximum Recorded Temperature	114F
Equipment Number	1523
Location	HAYS, KANSAS
Recorded By	GUS PFANENSTIEL
Witnessed By	CAMERON BRIN

<<< Fold Here >>>

All interpretations are opinions based on inferences from electrical or other measurements and we cannot and do not guarantee the accuracy or correctness of any interpretation, and we shall not, except in the case of gross or willful negligence on our part, be liable or responsible for any loss, costs, damages, or expenses incurred or sustained by anyone resulting from any interpretation made by any of our officers, agents or employees. These interpretations are also subject to our general terms and conditions set out in our current Price Schedule.

Comments

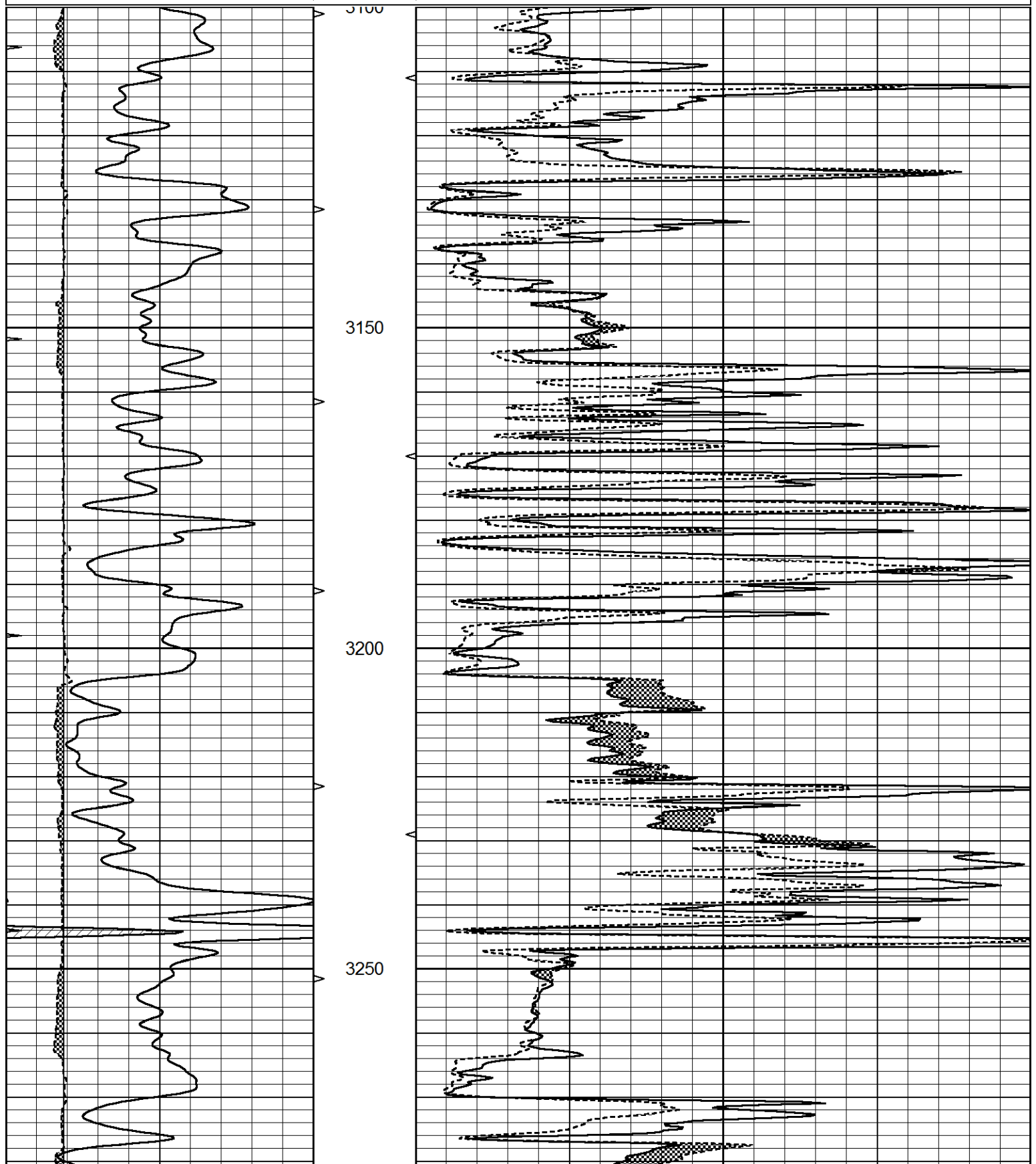
THANK YOU FOR USING ELI WIRELINE, HAYS, KS. (785) 628-6395
DIRECTIONS: STOCKTON NORTH TO COZY COVE RD.
WEST 15 MILES, SOUTH INTO.

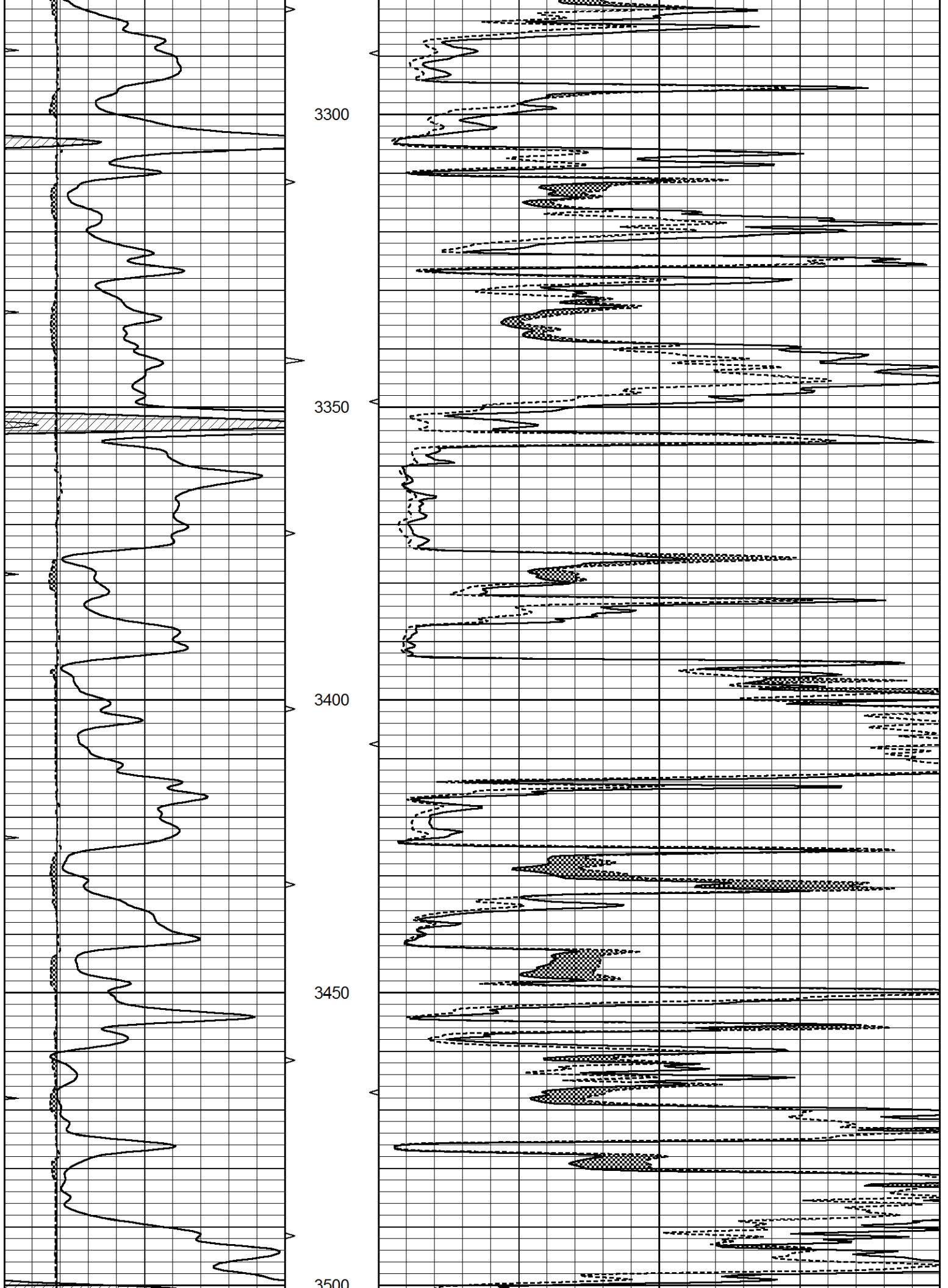


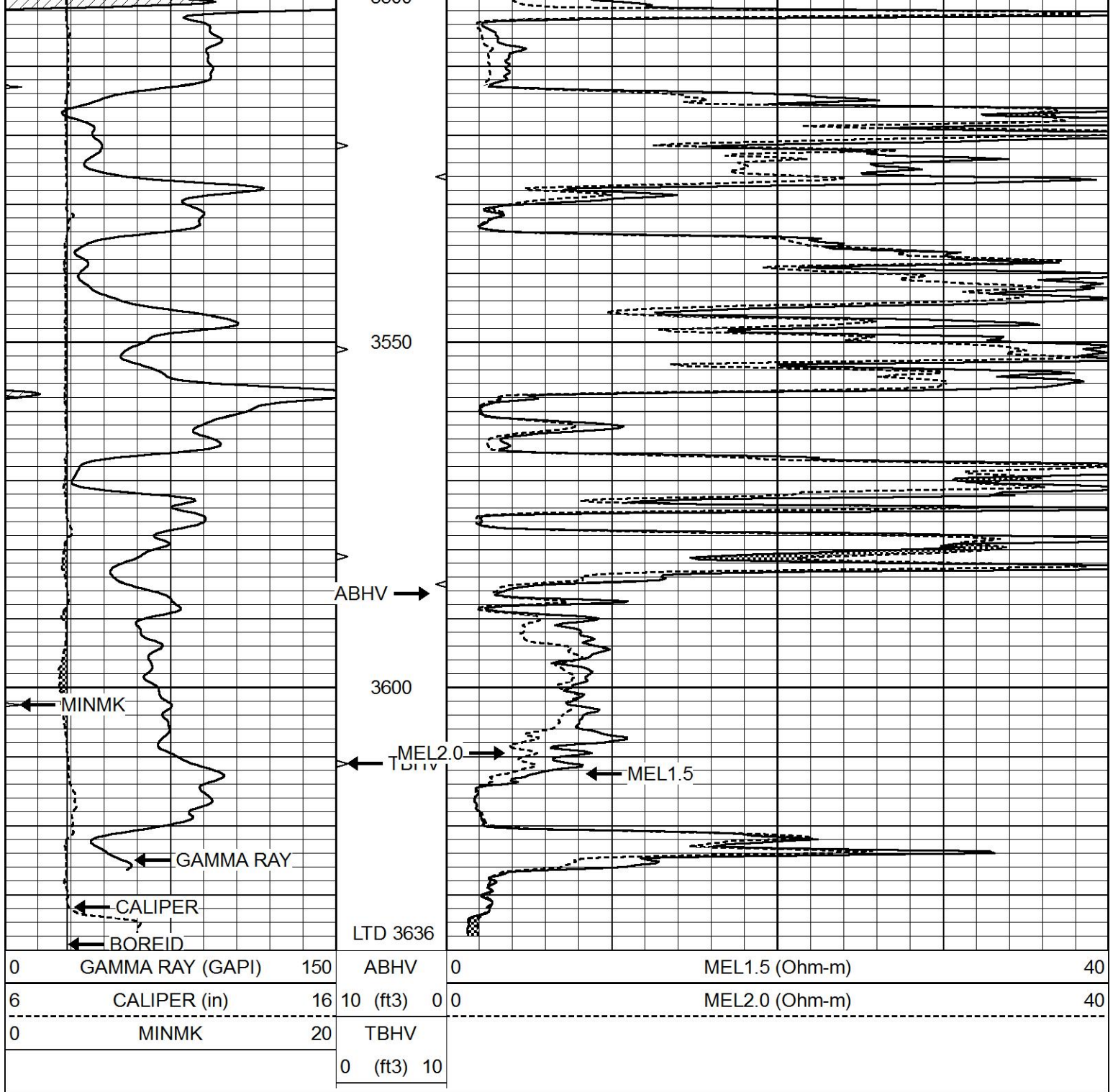
MAIN PASS

Database File 5429ddn.db
 Dataset Pathname pass50.1
 Presentation Format _micro
 Dataset Creation Sat Apr 10 19:16:17 2021
 Charted by Depth in Feet scaled 1:240

0	GAMMA RAY (GAPI)	150	ABHV	0	MEL1.5 (Ohm-m)	40
6	CALIPER (in)	16	10 (ft3)	0	MEL2.0 (Ohm-m)	40
0	MINMK	20	TBHV			
			0 (ft3)	10		



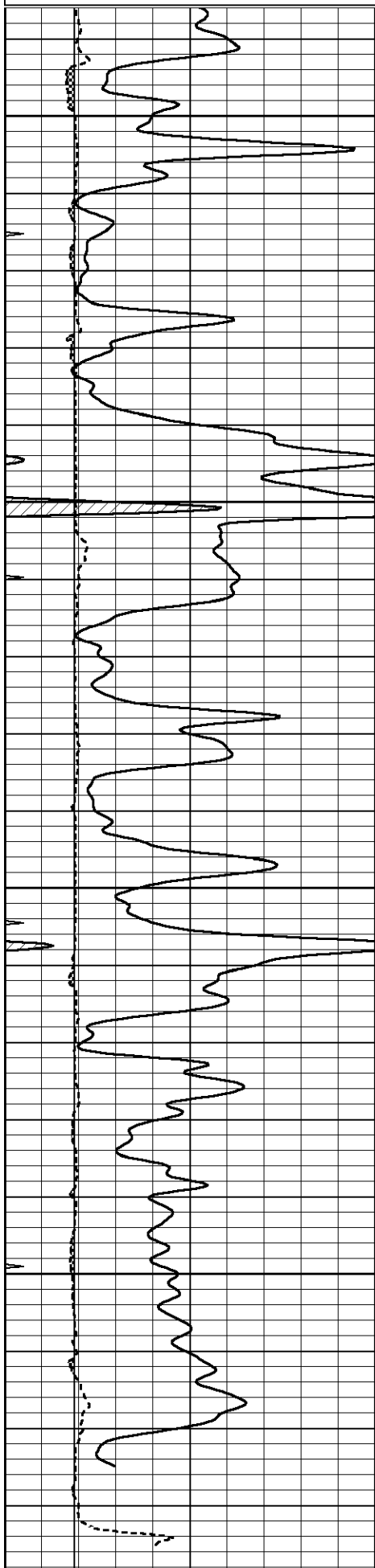




REPEAT SECTION

Database File 5429ddn.db
 Dataset Pathname pass4.1
 Presentation Format _micro
 Dataset Creation Sat Apr 10 19:05:14 2021
 Charted by Depth in Feet scaled 1:240

0	GAMMA RAY (GAPI)	150	ABHV	0	MEL1.5 (Ohm-m)	40
6	CALIPER (in)	16	10 (ft3)	0	MEL2.0 (Ohm-m)	40
0	MINMK	20	TBHV			
			0 (ft3)	10		



3450

3500

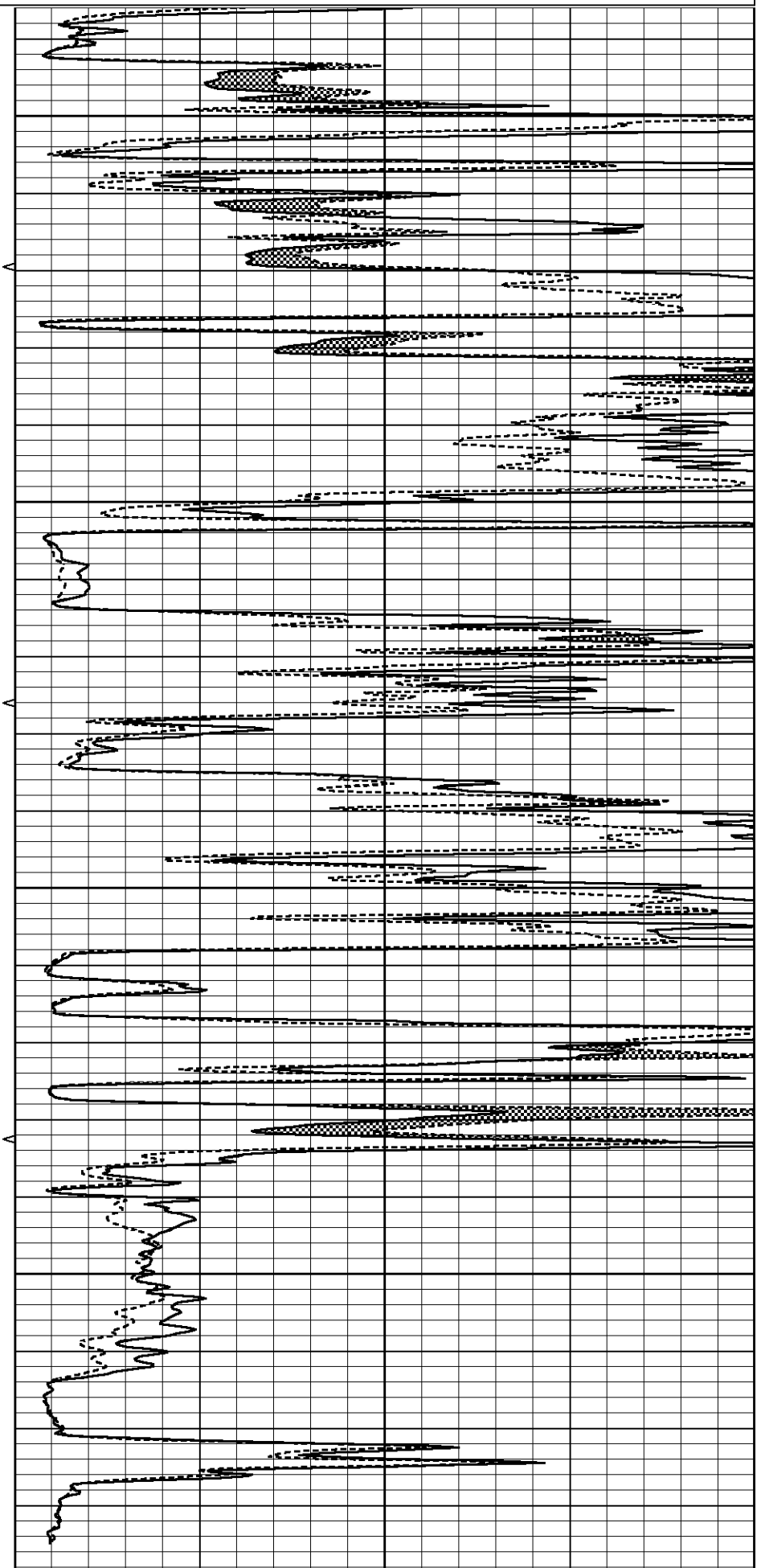
3550

3600

0 ABHV

6 CALIPER (in) 16 10 (ft3) 0 0

0 MINMK 20 TBHV



MEL1.5 (Ohm-m) 40

MEL2.0 (Ohm-m) 40

Calibration Report

Database File 5429ddn.db
 Dataset Pathname pass4.1
 Dataset Creation Sat Apr 10 19:05:14 2021

MICRO Calibration Report

Serial Number: Micro1
 Tool Model: ProbeL
 Performed: Sat Apr 10 18:53:52 2021

Caliper Calibration: Gain=2.815 Offset=4.502
 References Low Cal High Cal
 8.500 13.500
 Readings 0.887 2.663

1.5" Calibration: Gain=26.134 Offset=-1.000
 References Low Cal High Cal
 0.000 20.000
 Readings 0.004 0.832

2" Calibration: Gain=28.000 Offset=-0.800
 References Low Cal High Cal
 0.000 20.000
 Readings 0.022 0.793

Gamma Ray Calibration Report

Serial Number: GR5
 Tool Model: OPEN
 Performed: Thu Jul 30 23:16:16 2020
 Calibrator Value: 1.0 GAPI
 Background Reading: 0.0 cps
 Calibrator Reading: 1.0 cps
 Sensitivity: 0.9500 GAPI/cps