



**COMPENSATED
DENSITY/NEUTRON
LOG**

Company	FOURWINDS OIL CORP.	Location:	API # : 15-147-20756-0000	Other Services
Well	MARY A UNIT #1		150' FNL & 1250' FWL	DIL ML
Field	RAY	County	PHILLIPS	State
County	PHILLIPS	State	KANSAS	
Permanent Datum	GROUND LEVEL	Elevation	2221	K.B. 2229 D.F. 2227' G.L. 2221
Log Measured From	KELLY BUSHING 8' A.G.L.			
Drilling Measured From	KELLY BUSHING			
Date	04/10/20			
Run Number	ONE			
Depth Driller	3641			
Depth Logger	3636			
Bottom Logged Interval	3616			
Top Log Interval	3100			
Casing Driller	8 5/8" @ 221			
Casing Logger	221			
Bit Size	7 7/8"			
Type Fluid in Hole	CHEMICAL MUD			
Density / Viscosity	9.2/58			
pH / Fluid Loss	11.5/8.0			
Source of Sample	FLOWLINE			
Rm @ Meas. Temp	1.7 @ 72F			
Rmf @ Meas. Temp	1.3 @ 72F			
Rmc @ Meas. Temp	2.04 @ 72F			
Source of Rmf / Rmc	MEASURED			
Rm @ BHT	1.07 @ 114F			
Time Circulation Stopped	2 HOURS			
Time Logger on Bottom	////			
Maximum Recorded Temperature	114F			
Equipment Number	1523			
Location	HAYS, KANSAS			
Recorded By	GUS PFANENSTIEL			
Witnessed By	CAMERON BRIN			

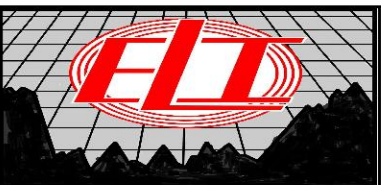
<<< Fold Here >>>

All interpretations are opinions based on inferences from electrical or other measurements and we cannot and do not guarantee the accuracy or correctness of any interpretation, and we shall not, except in the case of gross or willful negligence on our part, be liable or responsible for any loss, costs, damages, or expenses incurred or sustained by anyone resulting from any interpretation made by any of our officers, agents or employees. These interpretations are also subject to our general terms and conditions set out in our current Price Schedule.

Comments

THANK YOU FOR USING ELI WIRELINE, HAYS, KS. (785) 628-6395

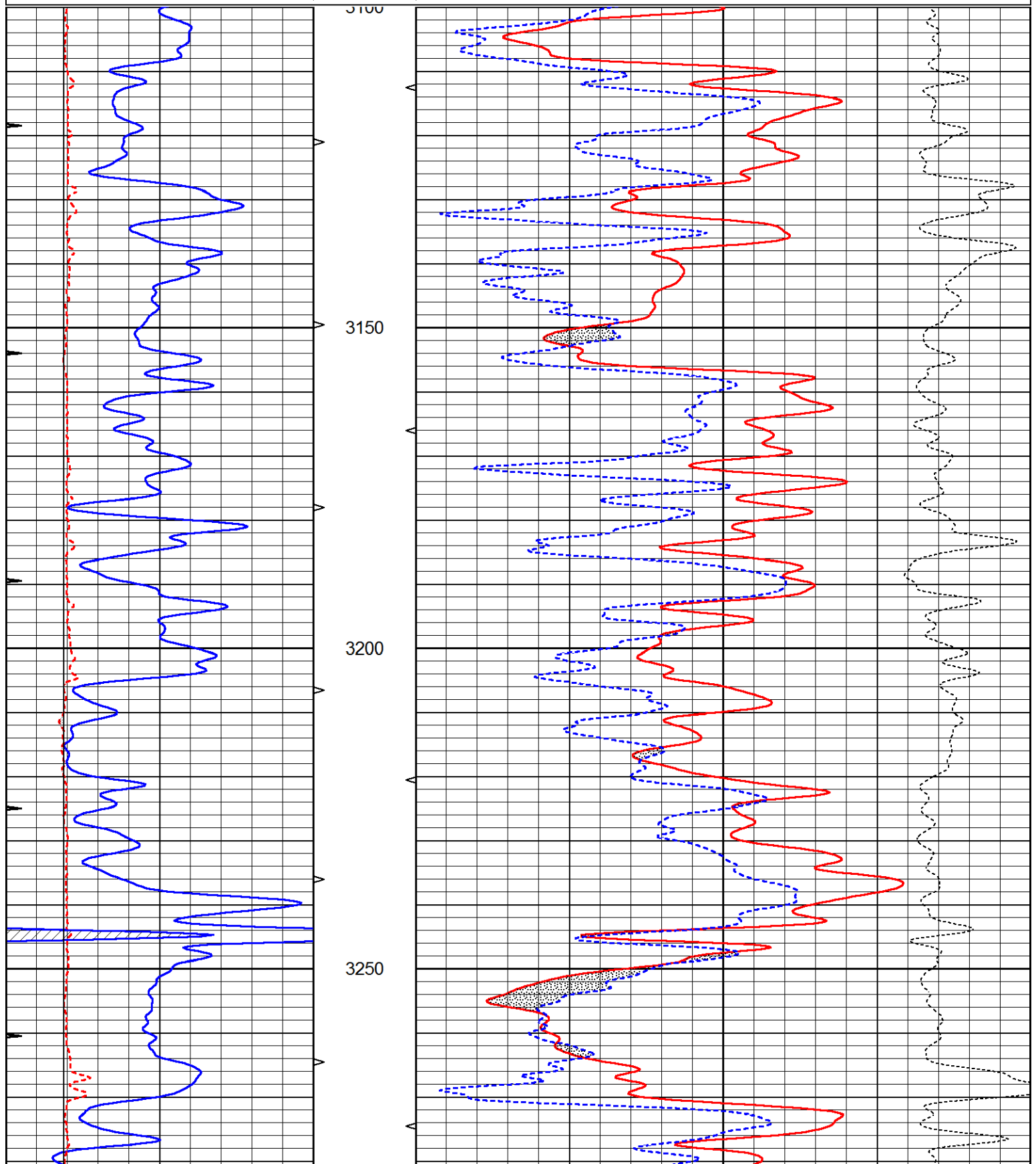
DIRECTIONS: STOCKTON NORTH TO COZY COVE RD.
WEST 15 MILES, SOUTH INTO.

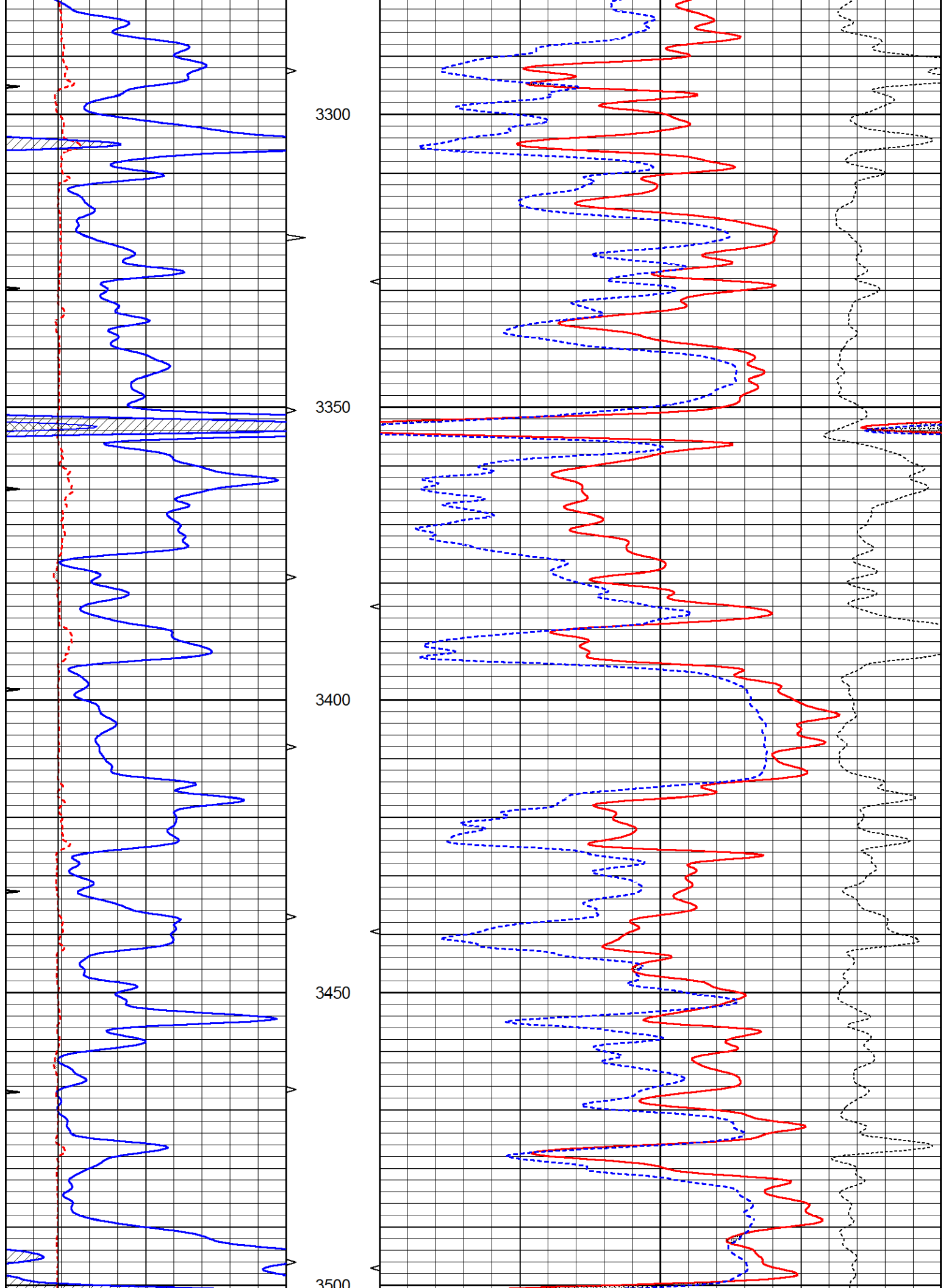


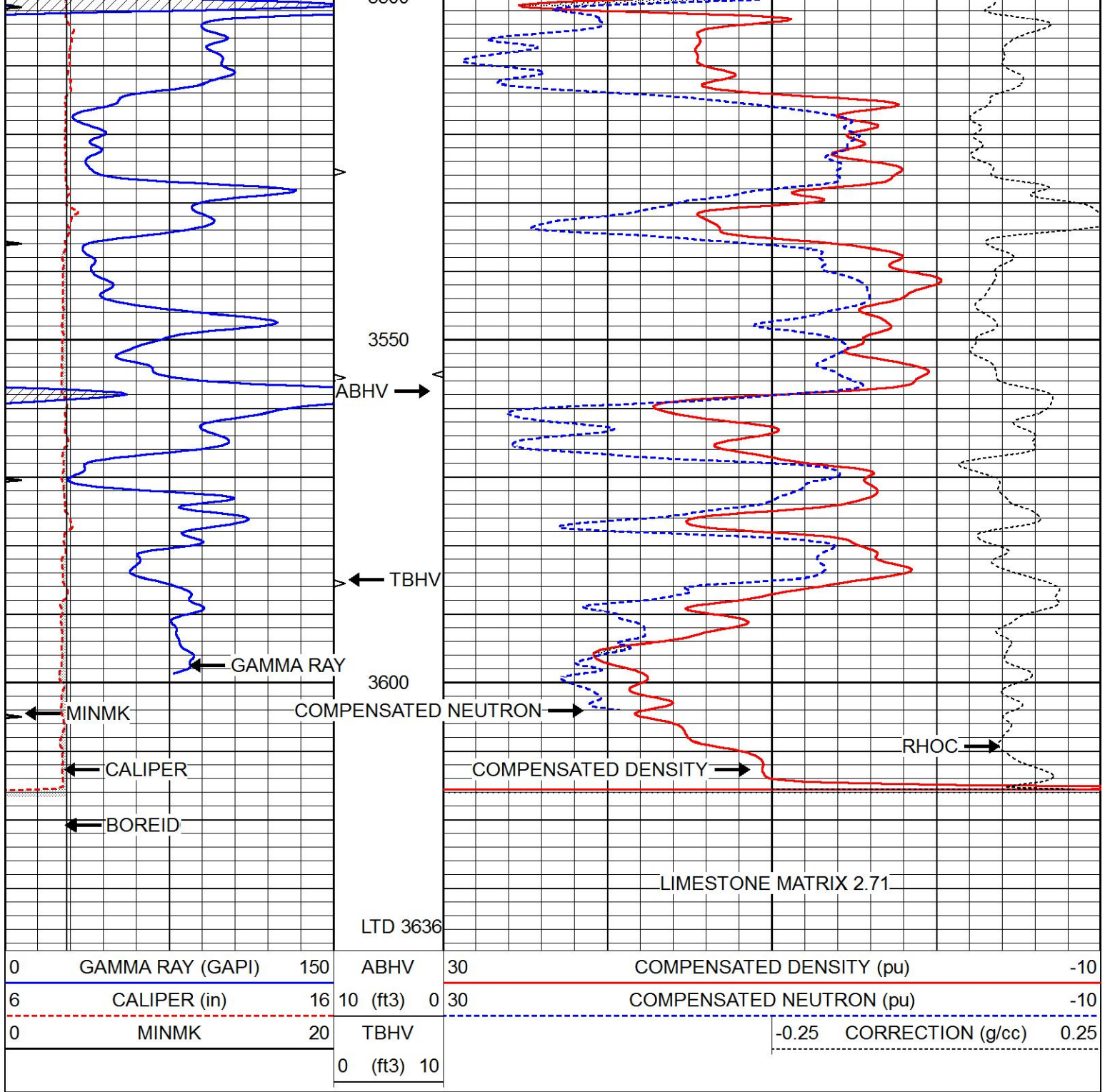
MAIN PASS

Database File 5429ddn.db
 Dataset Pathname pass3.1
 Presentation Format den_neu
 Dataset Creation Sat Apr 10 18:45:57 2021
 Charted by Depth in Feet scaled 1:240

0	GAMMA RAY (GAPI)	150	ABHV	30	COMPENSATED DENSITY (pu)	-10
6	CALIPER (in)	16	10 (ft3) 0	30	COMPENSATED NEUTRON (pu)	-10
0	MINMK	20	TBHV		-0.25 CORRECTION (g/cc)	0.25
			0 (ft3) 10			





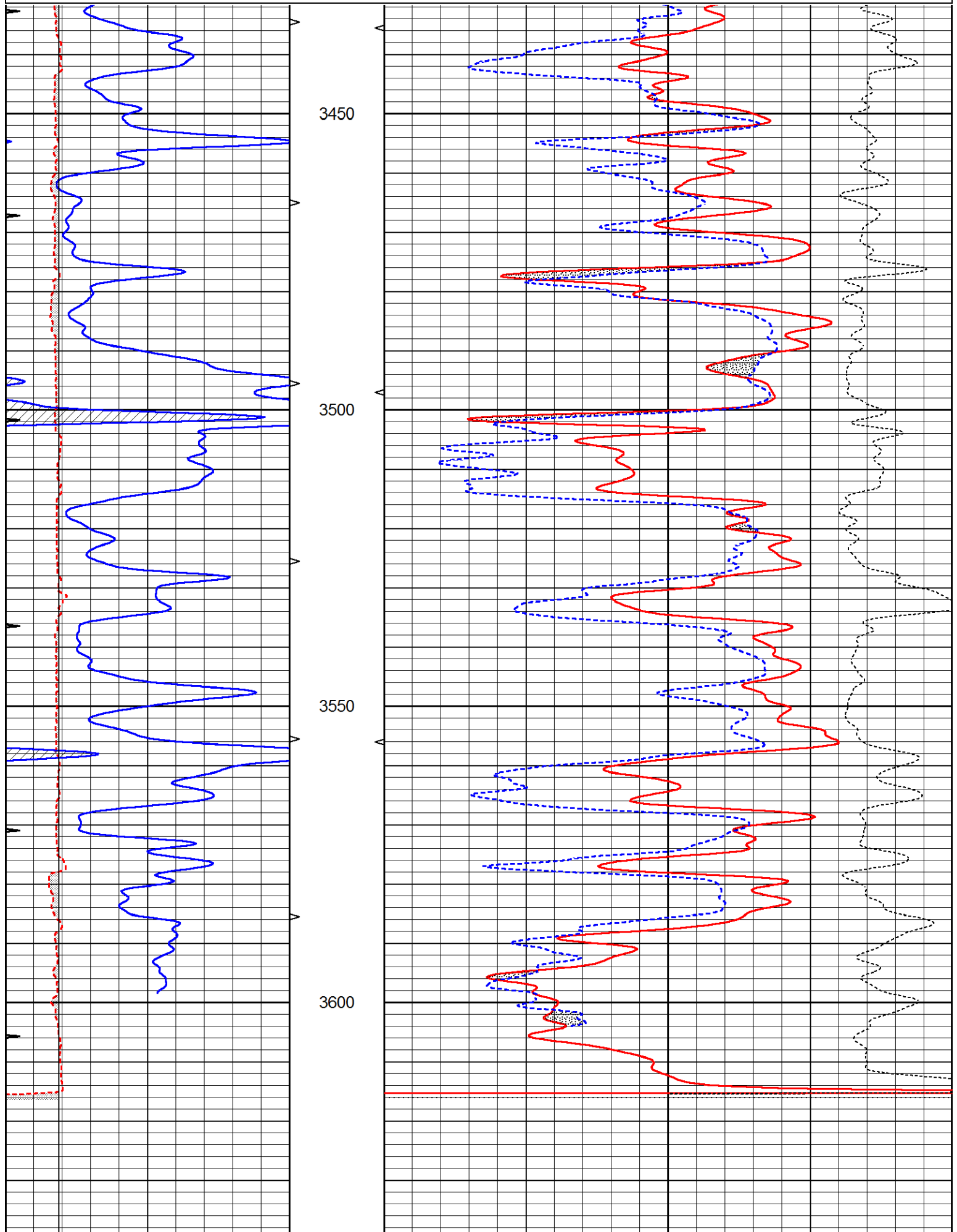


REPEAT SECTION

Database File 5429ddn.db
 Dataset Pathname pass2.1
 Presentation Format den_neu
 Dataset Creation Sat Apr 10 18:07:32 2021
 Charted by Depth in Feet scaled 1:240

0	GAMMA RAY (GAPI)	150	ABHV	30	COMPENSATED DENSITY (pu)	-10
6	CALIPER (in)	16	10 (ft3)	0 30	COMPENSATED NEUTRON (pu)	-10
0	MINMK	20	TBHV		-0.25 CORRECTION (g/cc)	0.25

0 (ft3) 10



0	GAMMA RAY (GAPI)	150	ABHV	30	COMPENSATED DENSITY (pu)	-10
6	CALIPER (in)	16	10 (ft3)	0 30	COMPENSATED NEUTRON (nu)	-10

0	MINMK	20	TBHV	-0.25	CORRECTION (g/cc)	0.25
			0 (ft3) 10			

Calibration Report

Database File 5429ddn.db
 Dataset Pathname pass2.1
 Dataset Creation Sat Apr 10 18:07:32 2021

Dual Induction Calibration Report

Serial-Model: PROBE8-DILG
 Surface Cal Performed: Mon Sep 10 14:28:35 2018
 Downhole Cal Performed: Mon Sep 10 14:28:38 2018
 After Survey Verification Performed: Mon Sep 10 14:28:40 2018

Surface Calibration

Loop:	Readings			References			Results	
	Air	Loop		Air	Loop		m	b
Deep	0.015	0.648	V	0.000	400.000	mmho/m	620.000	0.000
Medium	0.029	0.796	V	0.000	464.000	mmho/m	590.000	-12.000
Internal:	Zero	Cal		Zero	Cal		m	b
Deep	0.017	0.657	V	0.000	400.000	mmho/m	625.153	-10.619
Medium	0.016	0.757	V	0.000	464.000	mmho/m	625.992	-9.739

Downhole Calibration

	Readings			References			Results	
	Zero	Cal		Zero	Cal		m'	b'
Deep	0.000	0.000	mmho/m	2.011	405.777	mmho/m	1.000	0.000
Medium	0.000	0.000	mmho/m	7.590	503.393	mmho/m	1.000	0.000
LL3		7.500	V		1500.000	Ohm-m		
		0.000	V		20.000	Ohm-m		
		-7.200	V		3800.000	mmho-m		

After Survey Verification

	Readings			Targets			Results	
	Zero	Cal		Zero	Cal		m'	b'
Deep	0.000	0.000	mmho/m	0.000	0.000	mmho/m	0.000	0.000
Medium	0.000	0.000	mmho/m	0.000	0.000	mmho/m	0.000	0.000
LL3		1.000	Ohm-m		1.000	Ohm-m		
		0.000	Ohm-m		0.000	Ohm-m		
		1.000	mmho-m		1.000	mmho-m		

Litho Density Calibration Report

Serial: 001N Model: PRB

Master Calibration

Performed Thu Mar 19 11:30:16 2020

	Background	Magnesium	Aluminum	Aluminum+Fe	
Window 1	1572.2	7510.8	2837.3	2643.1	cps
Window 2	1446.2	6523.9	2552.8	2409.9	cps
Window 3	1060.9	3611.4	1731.5	1684.8	cps
Window 4	145.5	363.4	363.2	368.1	cps
Long Space	0.0	5077.7	1106.6	963.7	cps
Short Space	3.1	1709.3	1103.4	916.9	cps
Rho		1.7100	2.5900	0.0000	g/cc
Pe		2.0000	2.7500	5.7900	

Rib Angle : 44.0
 Spine Angle : 74.0

Rib Slope : 0.965
 Spine Slope : 3.481

Density/Spine Ratio : 0.555
 Spine Intercept : -17.4

Before Survey Verification

Performed Wed Dec 31 18:00:00 1969

Window 1	0.0	0.0	0.0	0.0	cps
Window 2	0.0	0.0	0.0	0.0	cps
Window 3	0.0	0.0	0.0	0.0	cps
Window 4	0.0	0.0	0.0	0.0	cps
Long Space	0.0	0.0	0.0	0.0	cps
Short Space	0.0	0.0	0.0	0.0	cps
Measured Rho		0.0000	0.0000	0.0000	g/cc
Measured Correction		0.0000	0.0000	0.0000	g/cc
Measured Pe			0.0000	0.0000	

After Survey Verification

Performed Wed Dec 31 18:00:00 1969

Window 1	0.0	0.0	0.0	0.0	cps
Window 2	0.0	0.0	0.0	0.0	cps
Window 3	0.0	0.0	0.0	0.0	cps
Window 4	0.0	0.0	0.0	0.0	cps
Long Space	0.0	0.0	0.0	0.0	cps
Short Space	0.0	0.0	0.0	0.0	cps
Measured Rho		0.0000	0.0000	0.0000	g/cc
Measured Correction		0.0000	0.0000	0.0000	g/cc
Measured Pe			0.0000	0.0000	

Compensated Neutron Calibration Report

Serial Number: 6I
 Tool Model: G

CALIBRATION

Detector	Readings	Target	Normalization
Short Space	1.00 cps	1.00 cps	1.0000
Long Space	1.00 cps	1.00 cps	1.0000

PRE-SURVEY VERIFICATION

	Detector	Readings	Measured	Target
1)	Short Space	cps		
	Long Space	cps	pu	pu
2)	Short Space	cps		
	Long Space	cps	pu	
3)	Short Space	cps		
	Long Space	cps	pu	

POST-SURVEY VERIFICATION

	Detector	Readings	Measured	Target
1)	Short Space	cps		
	Long Space	cps	pu	pu
2)	Short Space	cps		

	Long Space	cps	pu	pu
3)	Short Space	cps		
	Long Space	cps	pu	pu

Gamma Ray Calibration Report

Serial Number:	GR6		
Tool Model:	OPEN		
Performed:	Thu Jul 30 20:04:35 2020		
Calibrator Value:	150.0	GAPI	
Background Reading:	0.0	cps	
Calibrator Reading:	276.0	cps	
Sensitivity:	0.7500	GAPI/cps	