



# DUAL INDUCTION LOG

Company FOURWINDS OIL CORP.  
 Well MARY A UNIT #1  
 Field RAY  
 County PHILLIPS  
 State KANSAS

Company FOURWINDS OIL CORP.  
 Well MARY A UNIT #1  
 Field RAY  
 County PHILLIPS State KANSAS

Location: API #: 15-147-20756-0000  
 150' FNL & 1250' FWL  
 SEC 28 TWP 5S RGE 20W  
 Permanent Datum GROUND LEVEL Elevation 2221  
 Log Measured From KELLY BUSHING 8' A.G.L.  
 Drilling Measured From KELLY BUSHING  
 Other Services CDL/CNL ML  
 Elevation  
 K.B. 2229  
 D.F. 2227'  
 G.L. 2221

|                              |                 |
|------------------------------|-----------------|
| Date                         | 04/10/20        |
| Run Number                   | ONE             |
| Depth Driller                | 3641            |
| Depth Logger                 | 3636            |
| Bottom Logged Interval       | 3634            |
| Top Log Interval             | 00              |
| Casing Driller               | 8 5/8" @ 221    |
| Casing Logger                | 221             |
| Bit Size                     | 7 7/8"          |
| Type Fluid in Hole           | CHEMICAL MUD    |
| Density / Viscosity          | 9.2/58          |
| pH / Fluid Loss              | 11.5/8.0        |
| Source of Sample             | FLOWLINE        |
| Rm @ Meas. Temp              | 1.7 @ 72F       |
| Rmf @ Meas. Temp             | 1.3 @ 72F       |
| Rmc @ Meas. Temp             | 2.04 @ 72F      |
| Source of Rmf / Rmc          | MEASURED        |
| Rm @ BHT                     | 1.07 @ 114F     |
| Time Circulation Stopped     | 2 HOURS         |
| Time Logger on Bottom        | ////            |
| Maximum Recorded Temperature | 114F            |
| Equipment Number             | 1523            |
| Location                     | HAYS, KANSAS    |
| Recorded By                  | GUS PFANENSTIEL |
| Witnessed By                 | CAMERON BRIN    |

<<< Fold Here >>>

All interpretations are opinions based on inferences from electrical or other measurements and we cannot and do not guarantee the accuracy or correctness of any interpretation, and we shall not, except in the case of gross or willful negligence on our part, be liable or responsible for any loss, costs, damages, or expenses incurred or sustained by anyone resulting from any interpretation made by any of our officers, agents or employees. These interpretations are also subject to our general terms and conditions set out in our current Price Schedule.

### Comments

THANK YOU FOR USING ELI WIRELINE, HAYS, KS. (785) 628-6395

DIRECTIONS: STOCKTON NORTH TO COZY COVE RD.  
 WEST 15 MILES, SOUTH INTO.

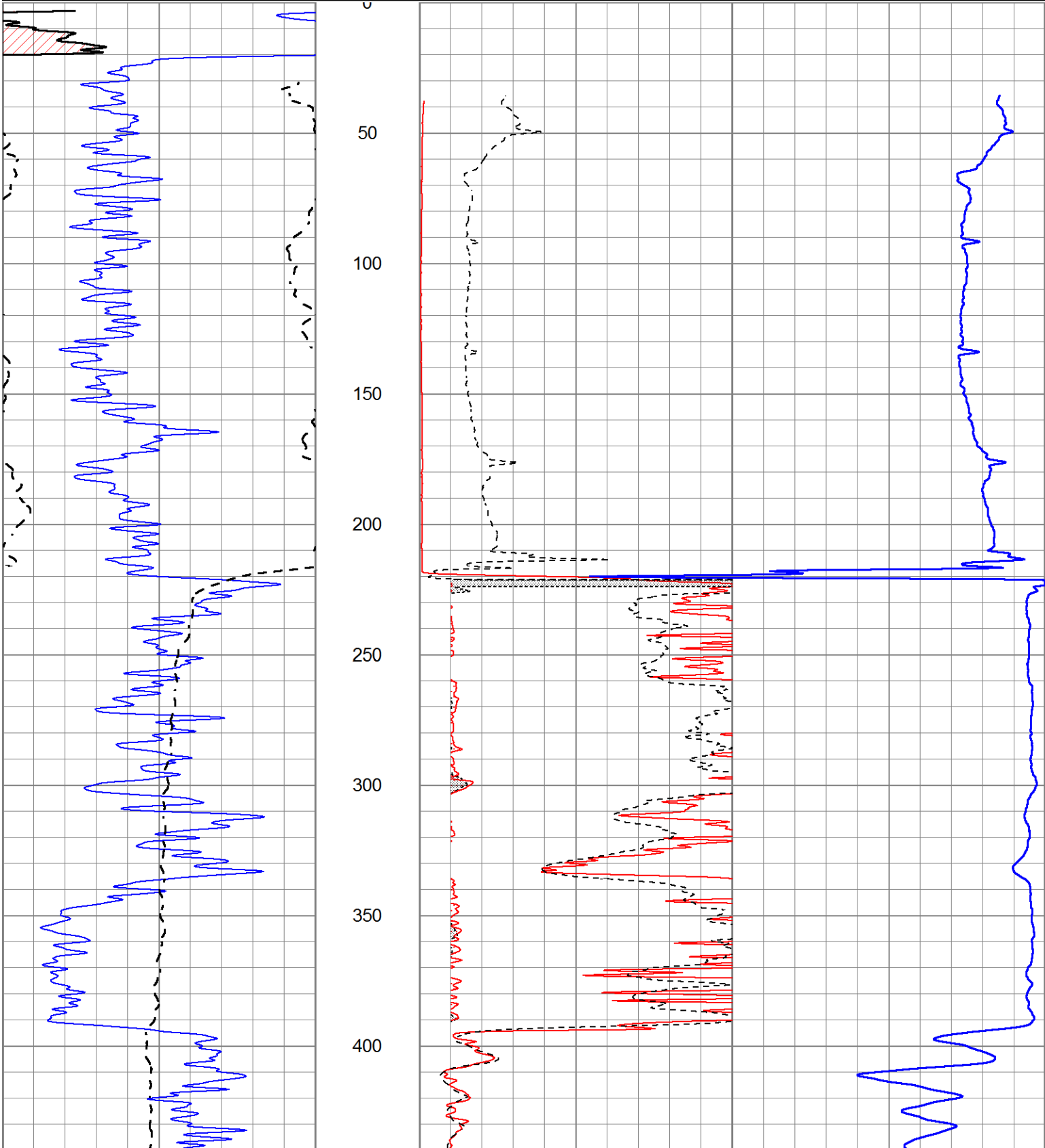


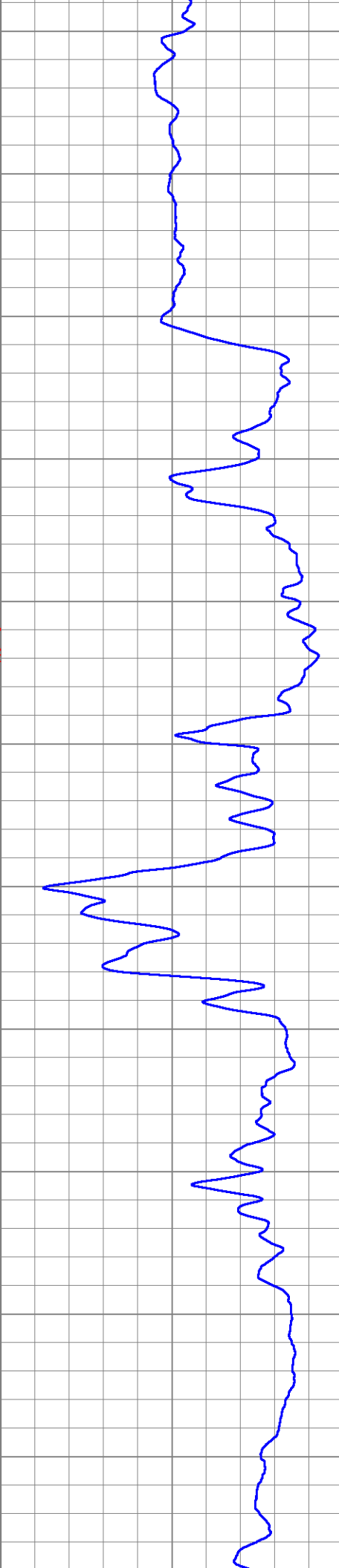
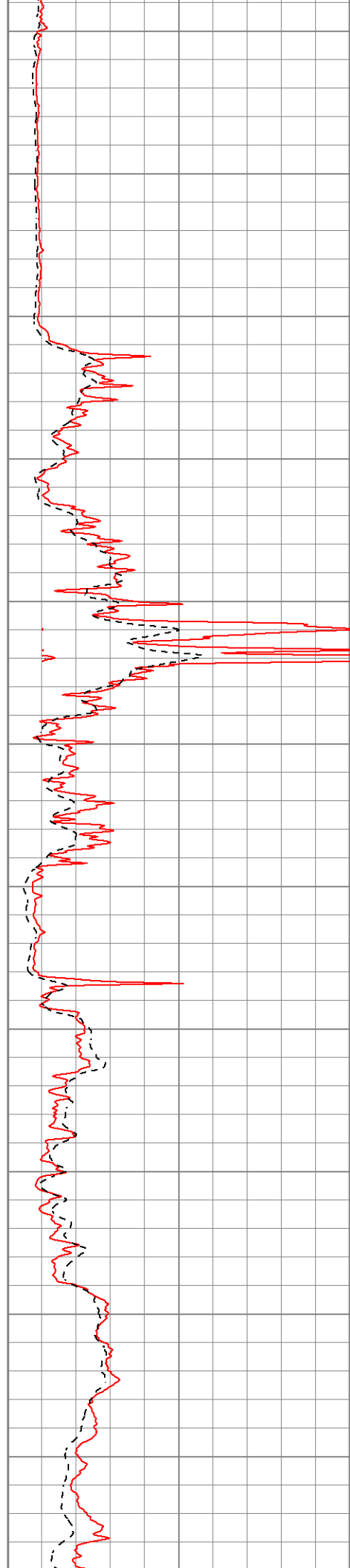
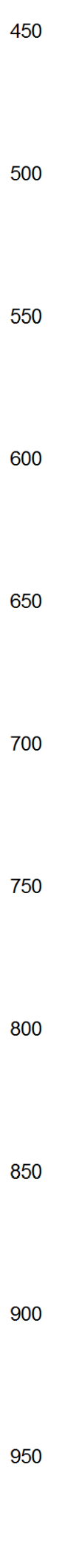
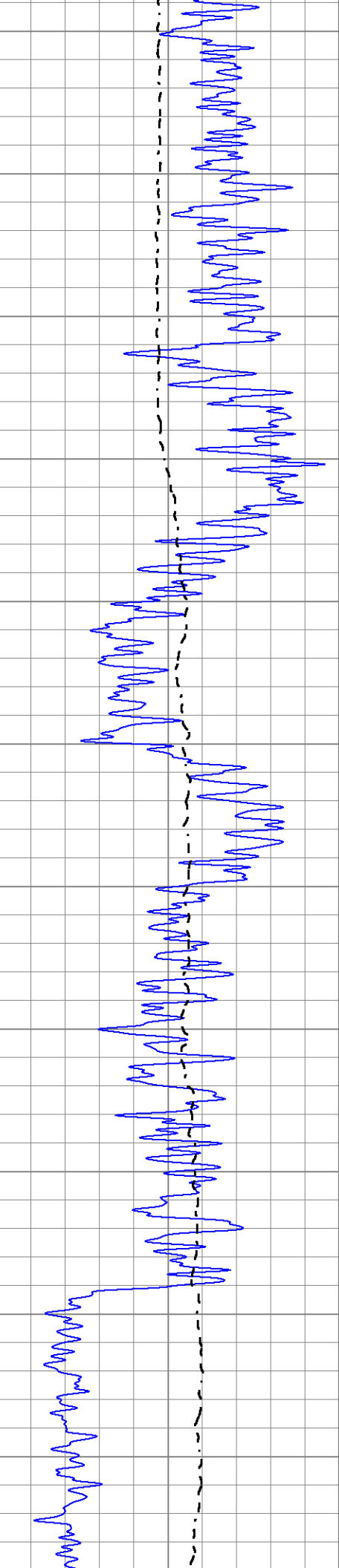
# MAIN PASS

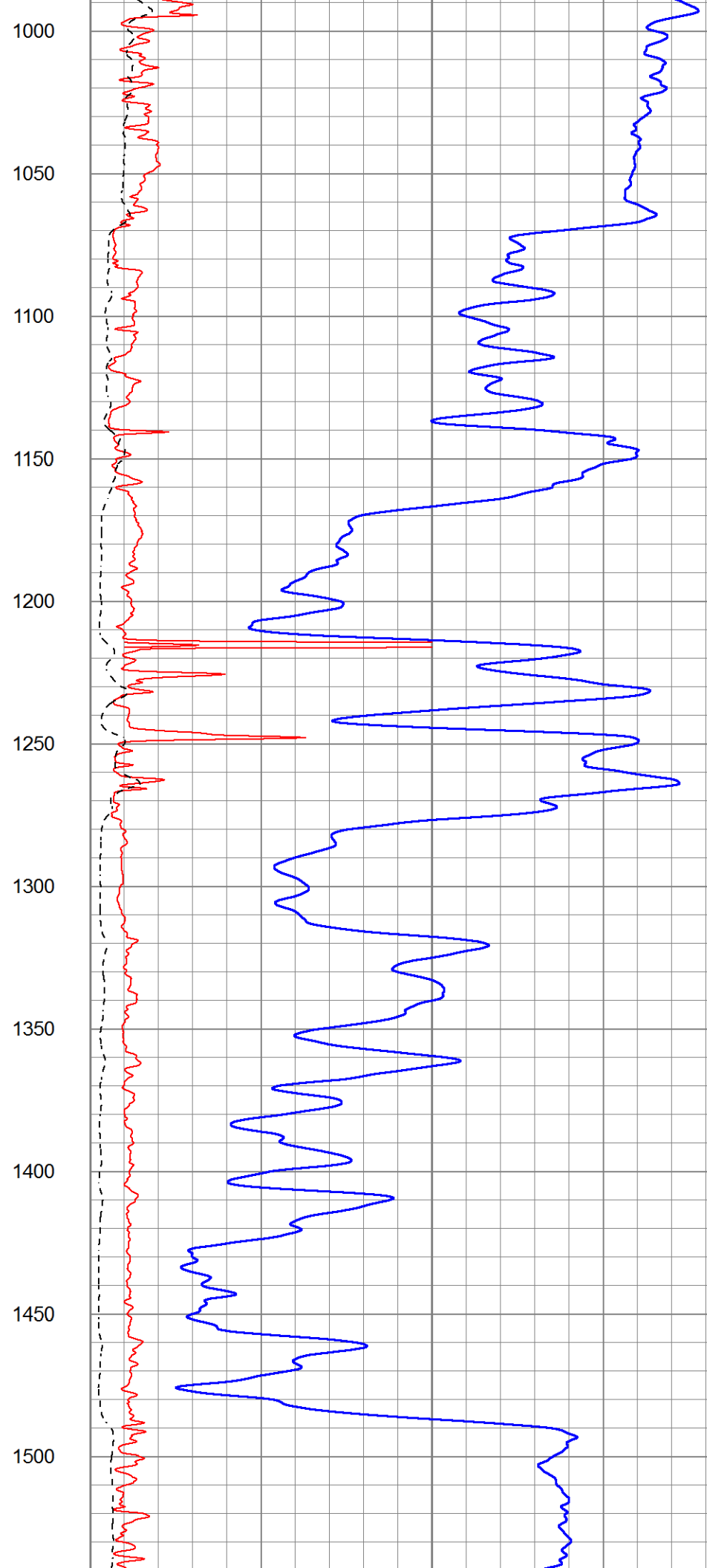
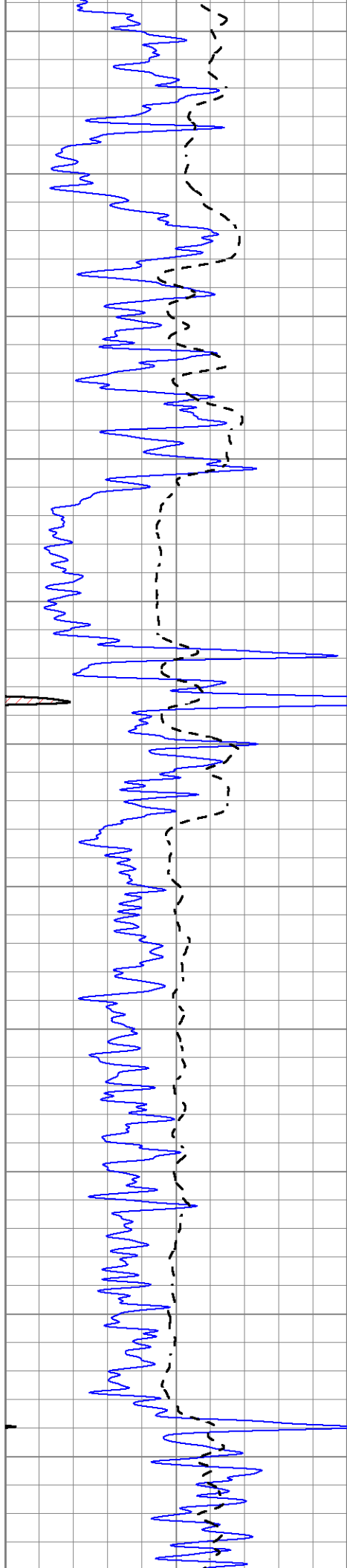
Database File 5429ddn.db  
 Dataset Pathname pass3.1  
 Presentation Format \_dil2  
 Dataset Creation Sat Apr 10 18:45:57 2021  
 Charted by Depth in Feet scaled 1:600

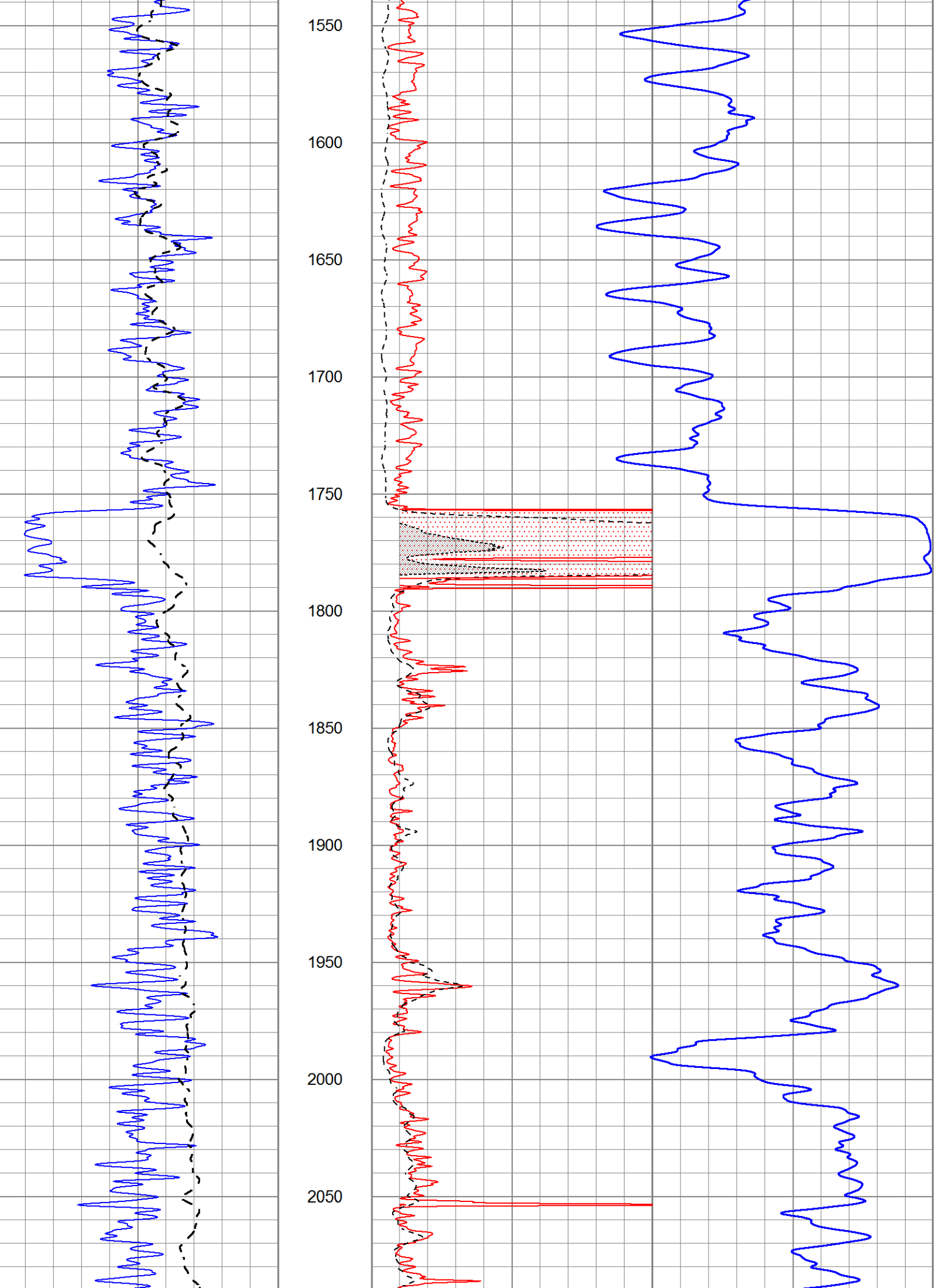
0 Gamma Ray (GAPI) 150  
 -100 SP (mV) 100

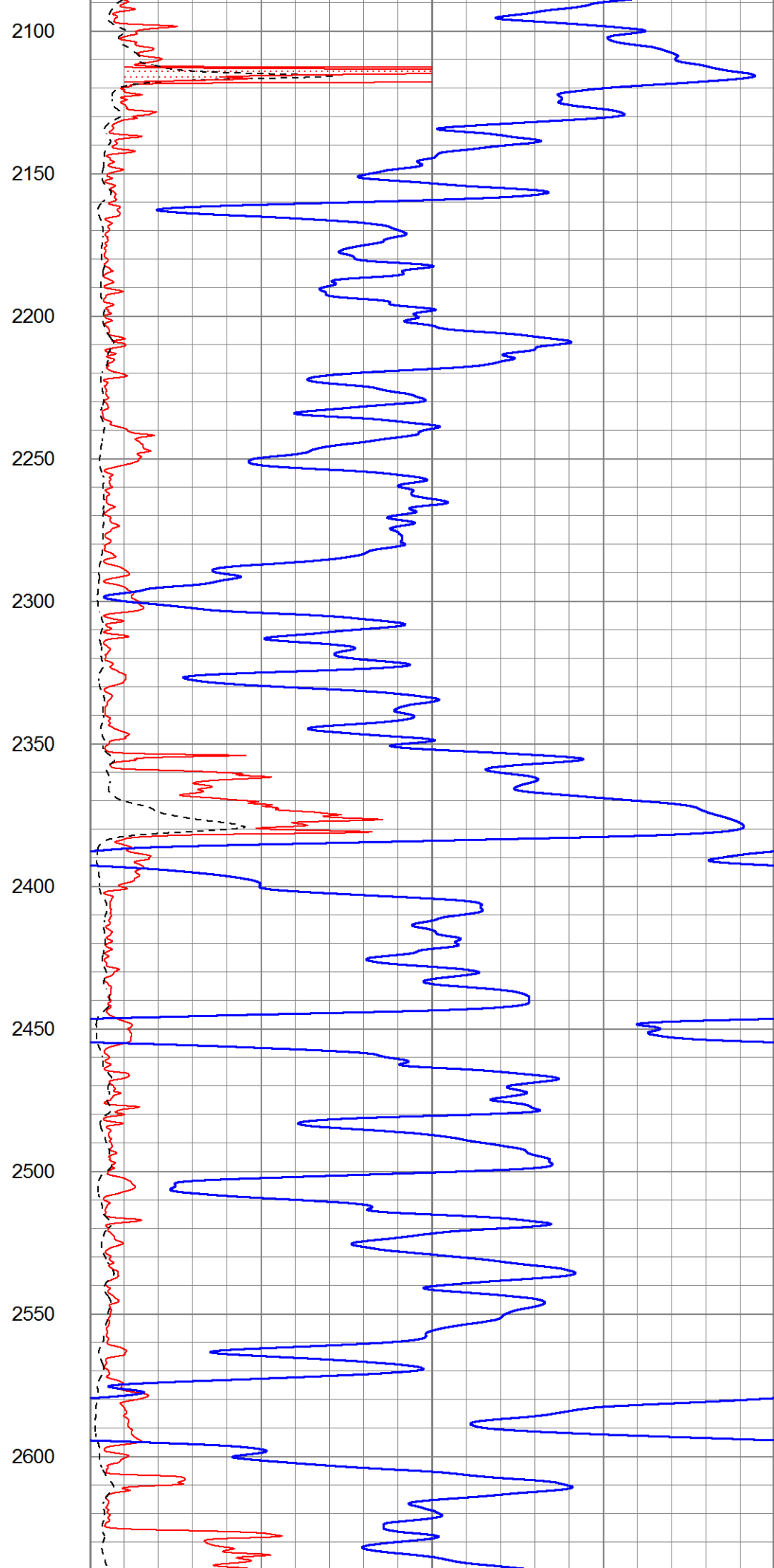
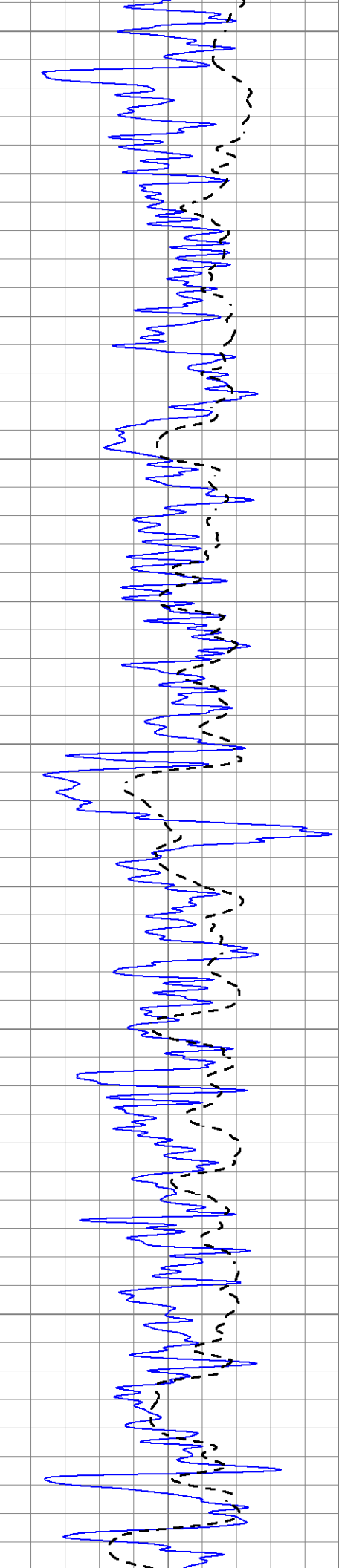
1000 CILD (mmho/m) 0  
 0 RLL3 (Ohm-m) 50  
 0 RILD (Ohm-m) 50  
 50 RILD X10 (Ohm-m) 500  
 50 RLL3 X10 (Ohm-m) 500

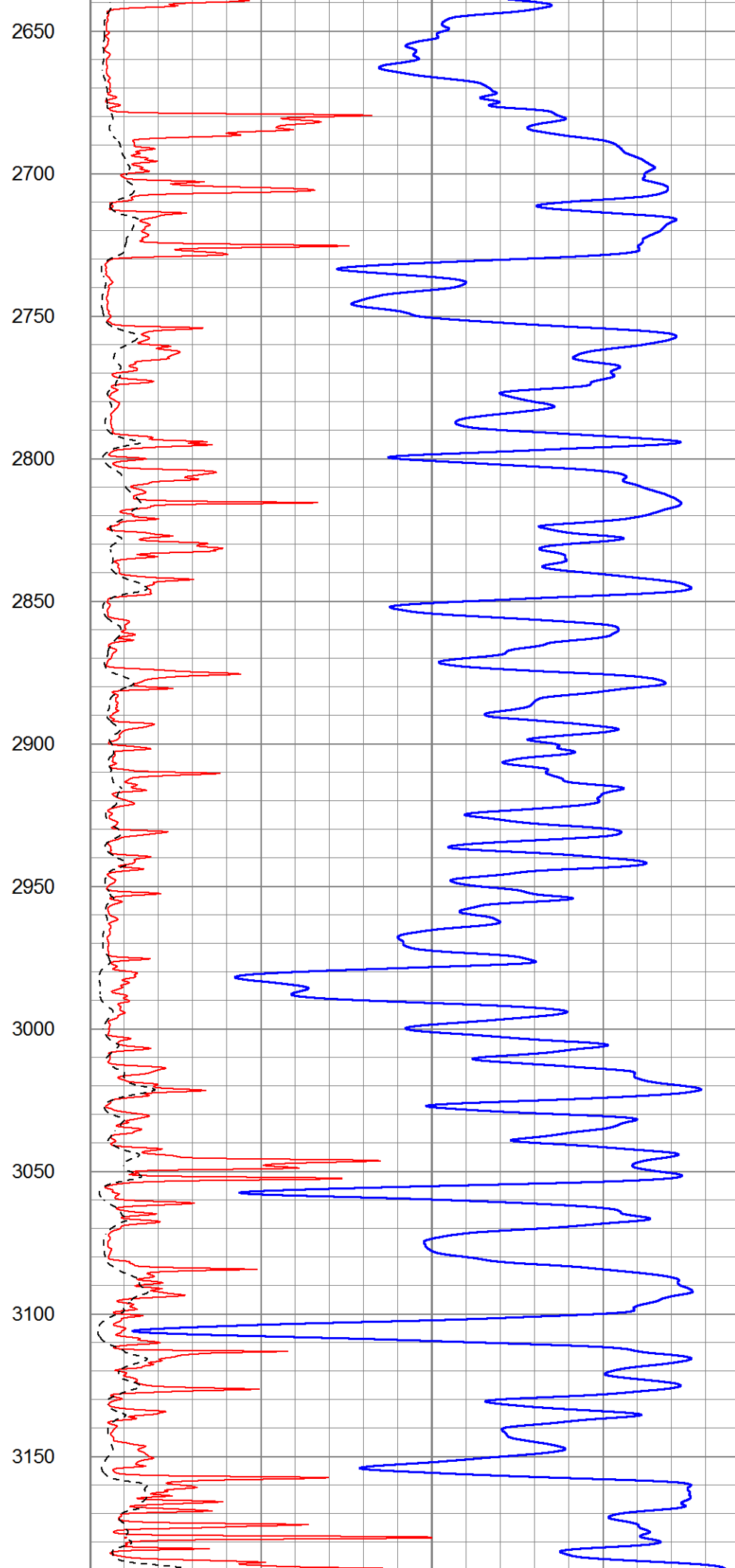
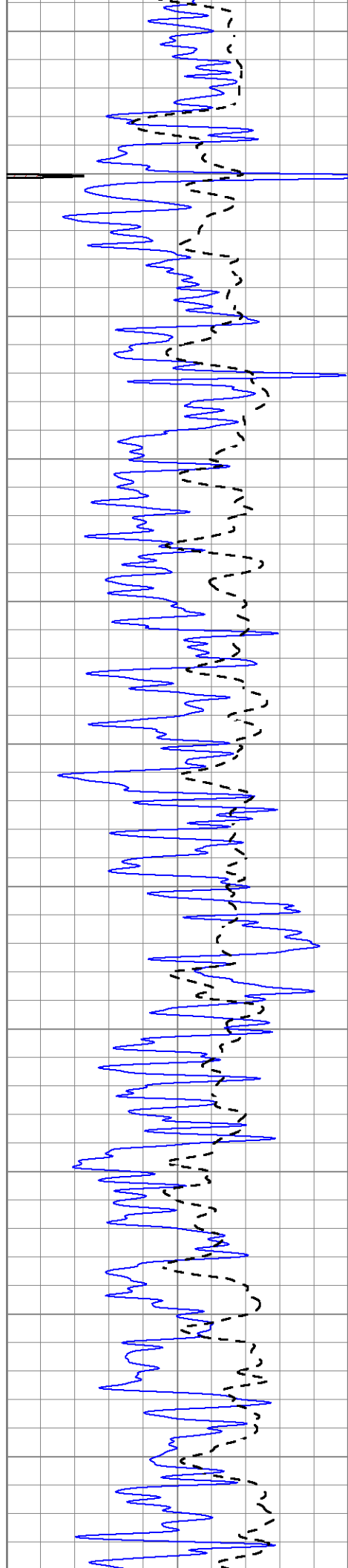


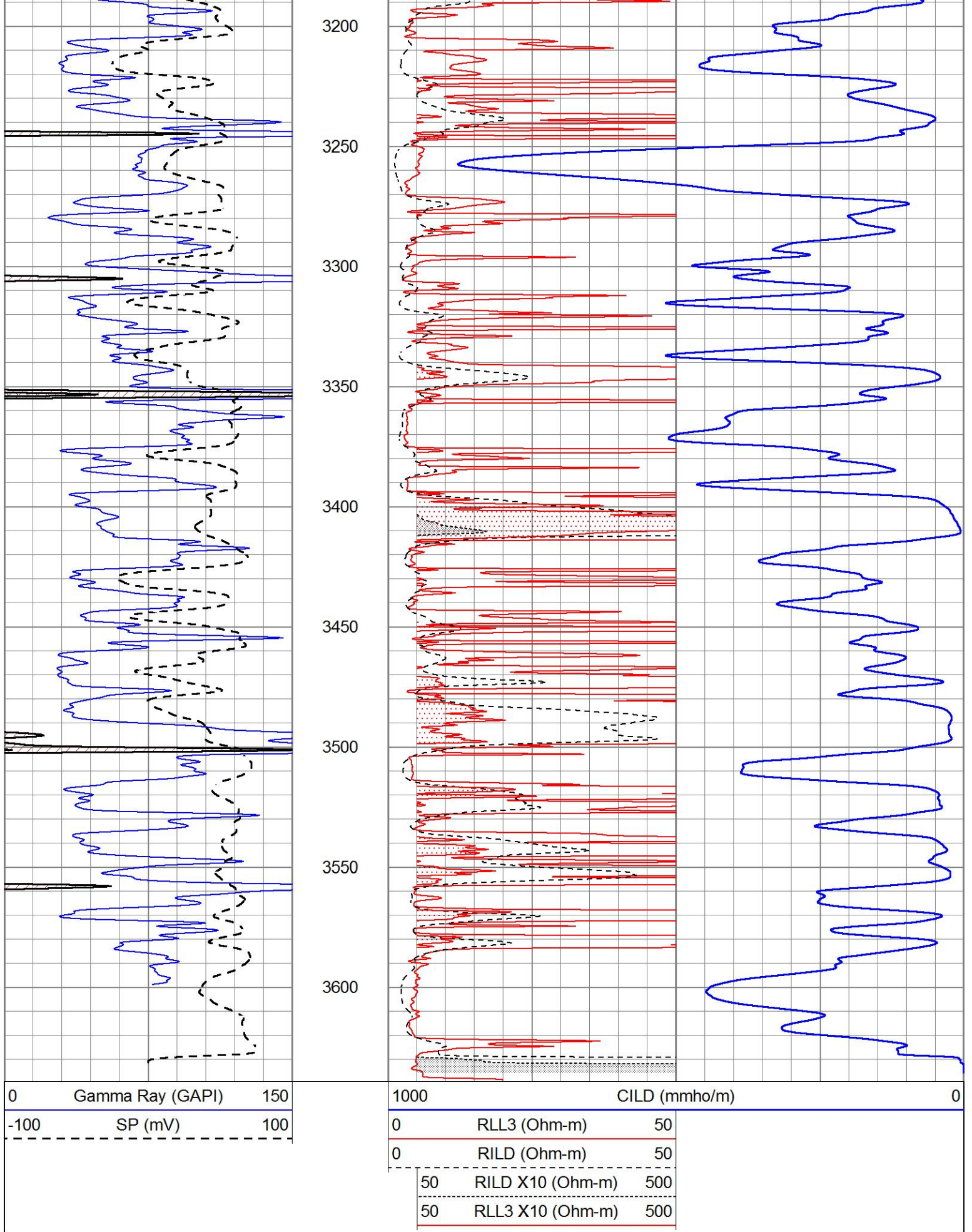












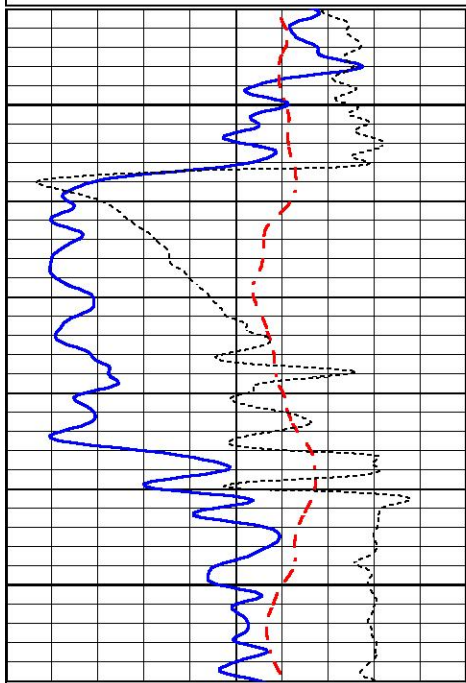
MAIN PASS

# MAIN PASS

Database File 5429ddn.db  
 Dataset Pathname pass3.1  
 Presentation Format \_dil  
 Dataset Creation Sat Apr 10 18:45:57 2021  
 Charted by Depth in Feet scaled 1:240

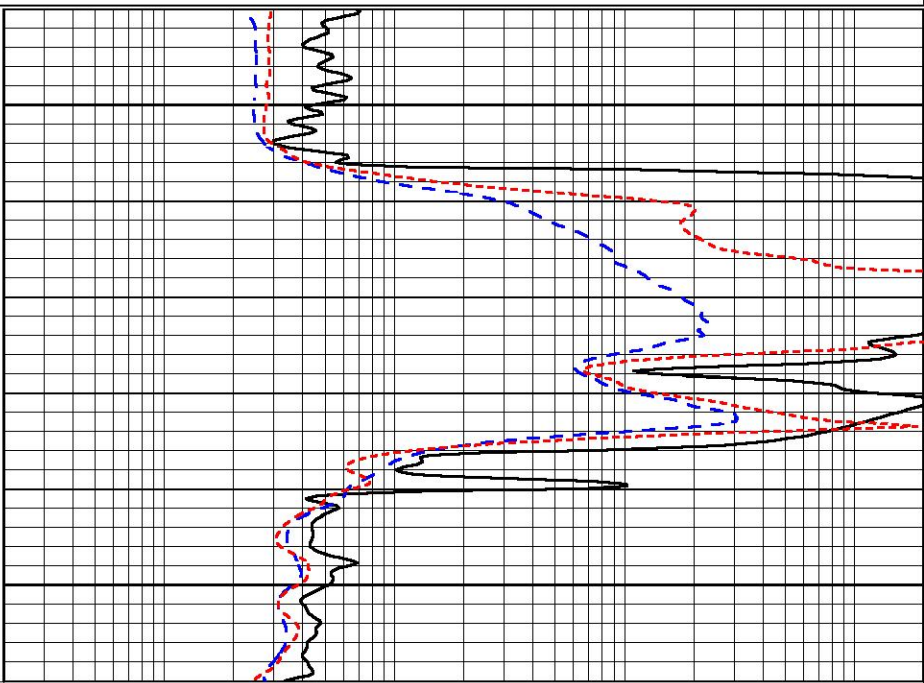
|      |                  |     |
|------|------------------|-----|
| 0    | GAMMA RAY (GAPI) | 150 |
| -100 | SP (mV)          | 100 |
| -250 | Rxo/Rt           | 50  |
| 0    | MINMK            | 20  |

|     |                          |      |
|-----|--------------------------|------|
| 0.2 | SHALLOW GUARD (Ohm-m)    | 2000 |
| 0.2 | DEEP INDUCTION (Ohm-m)   | 2000 |
| 0.2 | MEDIUM INDUCTION (Ohm-m) | 2000 |



1750

1800



|      |                  |     |
|------|------------------|-----|
| 0    | GAMMA RAY (GAPI) | 150 |
| -100 | SP (mV)          | 100 |
| -250 | Rxo/Rt           | 50  |
| 0    | MINMK            | 20  |

|     |                          |      |
|-----|--------------------------|------|
| 0.2 | SHALLOW GUARD (Ohm-m)    | 2000 |
| 0.2 | DEEP INDUCTION (Ohm-m)   | 2000 |
| 0.2 | MEDIUM INDUCTION (Ohm-m) | 2000 |

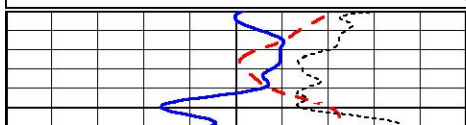


# MAIN PASS

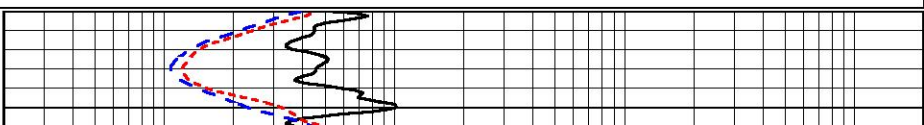
Database File 5429ddn.db  
 Dataset Pathname pass3.1  
 Presentation Format \_dil  
 Dataset Creation Sat Apr 10 18:45:57 2021  
 Charted by Depth in Feet scaled 1:240

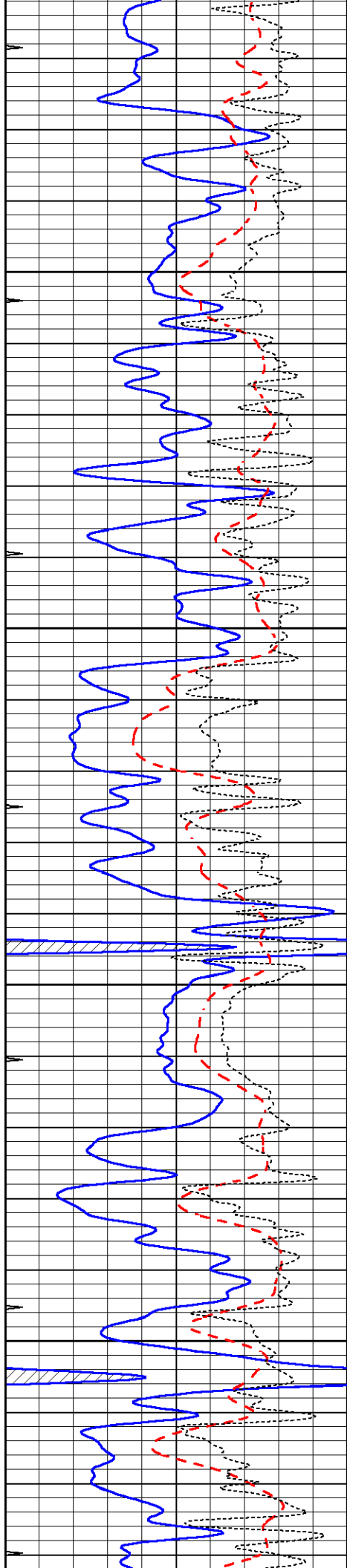
|      |                  |     |
|------|------------------|-----|
| 0    | GAMMA RAY (GAPI) | 150 |
| -100 | SP (mV)          | 100 |
| -250 | Rxo/Rt           | 50  |
| 0    | MINMK            | 20  |

|     |                          |      |
|-----|--------------------------|------|
| 0.2 | SHALLOW GUARD (Ohm-m)    | 2000 |
| 0.2 | DEEP INDUCTION (Ohm-m)   | 2000 |
| 0.2 | MEDIUM INDUCTION (Ohm-m) | 2000 |



3100



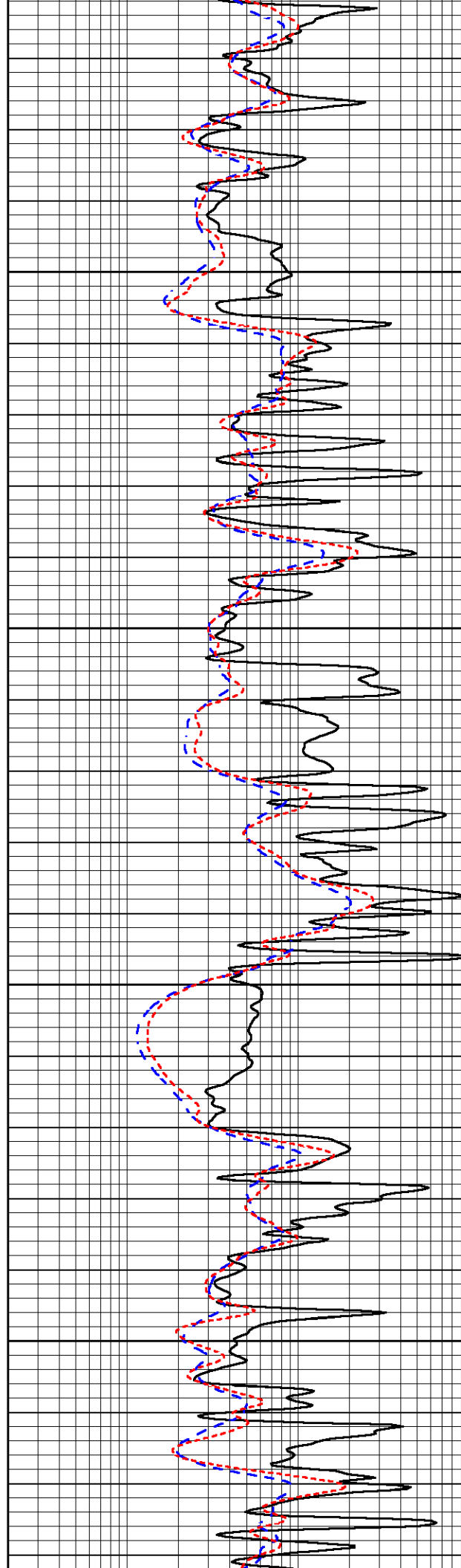


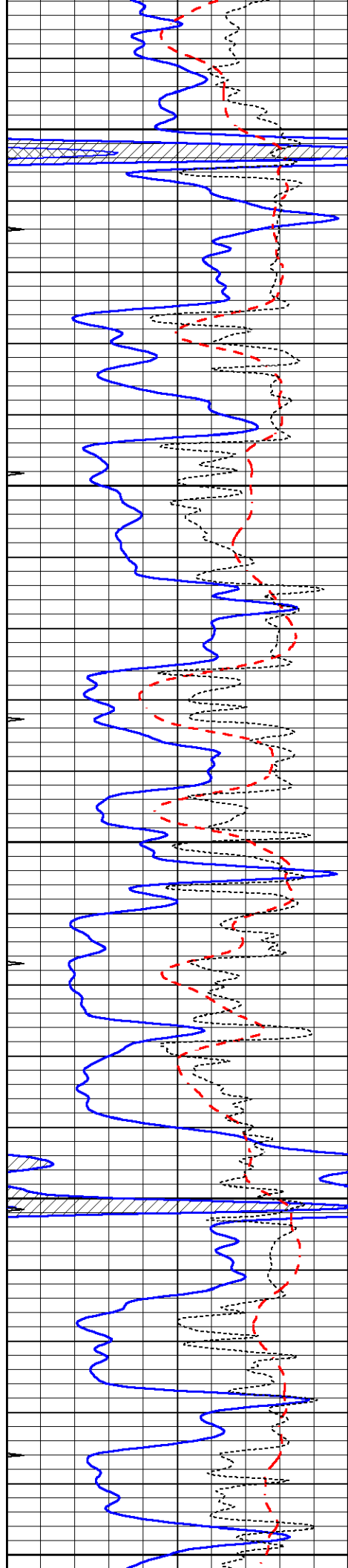
3150

3200

3250

3300





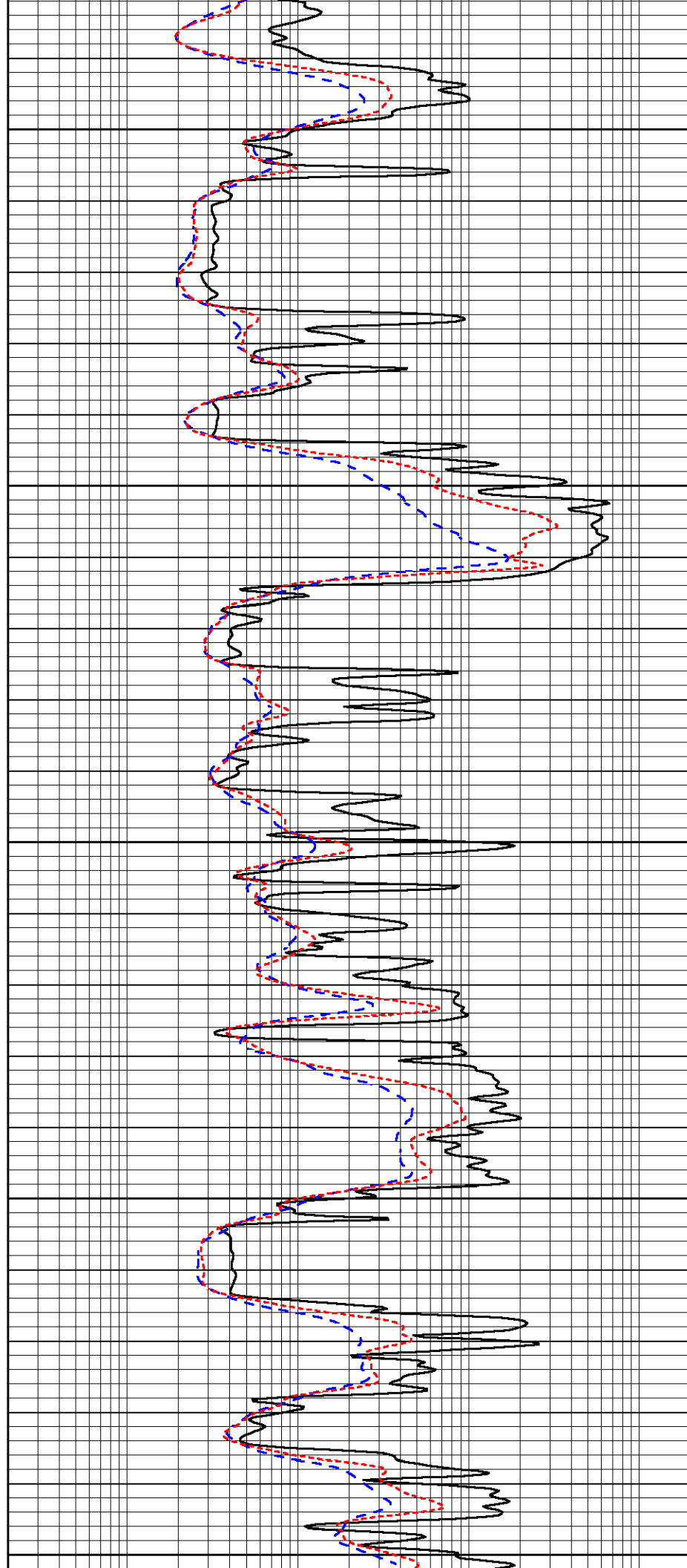
3350

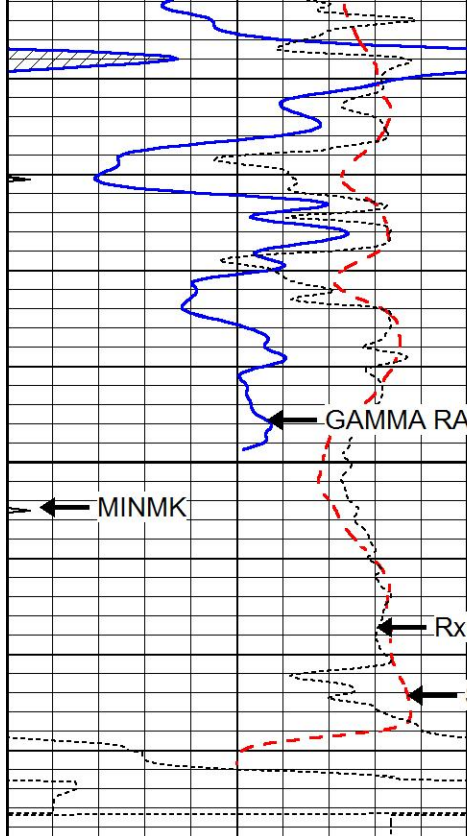
3400

3450

3500

3550





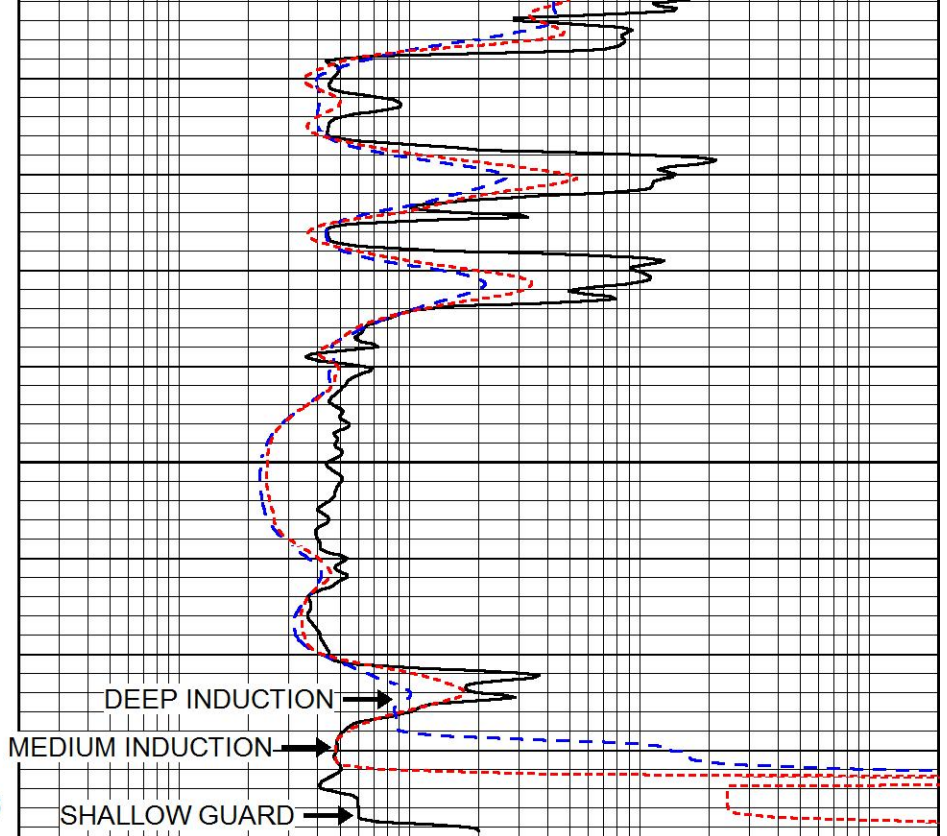
|      |                  |     |
|------|------------------|-----|
| 0    | GAMMA RAY (GAPI) | 150 |
| -100 | SP (mV)          | 100 |
| -250 | Rxo/Rt           | 50  |
| 0    | MINMK            | 20  |

3600

Rxo/Rt

SP

LTD 3636



|     |                          |      |
|-----|--------------------------|------|
| 0.2 | SHALLOW GUARD (Ohm-m)    | 2000 |
| 0.2 | DEEP INDUCTION (Ohm-m)   | 2000 |
| 0.2 | MEDIUM INDUCTION (Ohm-m) | 2000 |

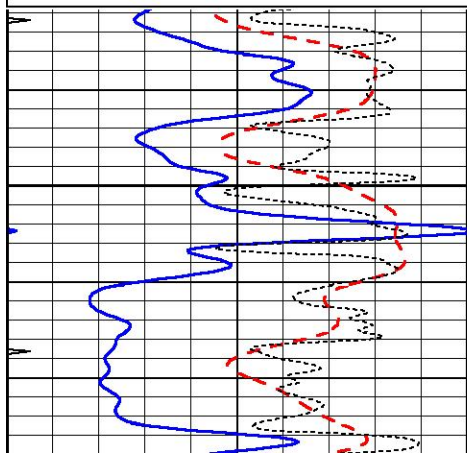


# REPEAT SECTION

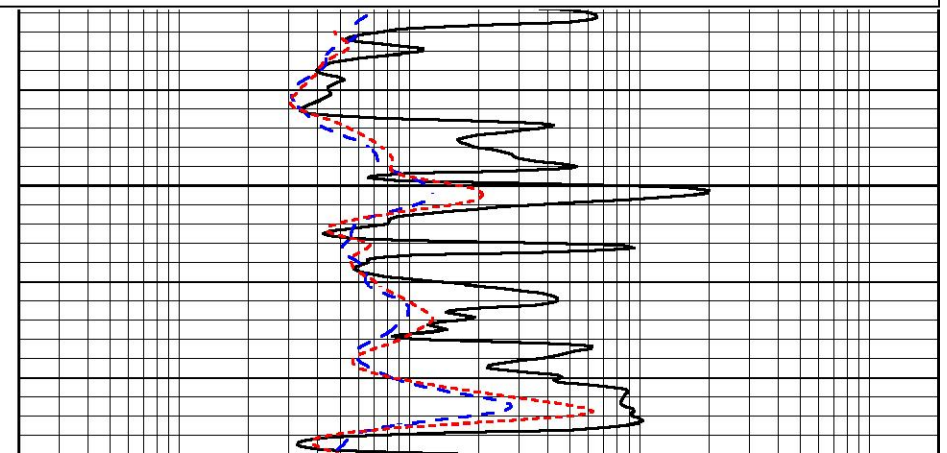
Database File 5429ddn.db  
 Dataset Pathname pass2.1  
 Presentation Format \_dil  
 Dataset Creation Sat Apr 10 18:07:32 2021  
 Charted by Depth in Feet scaled 1:240

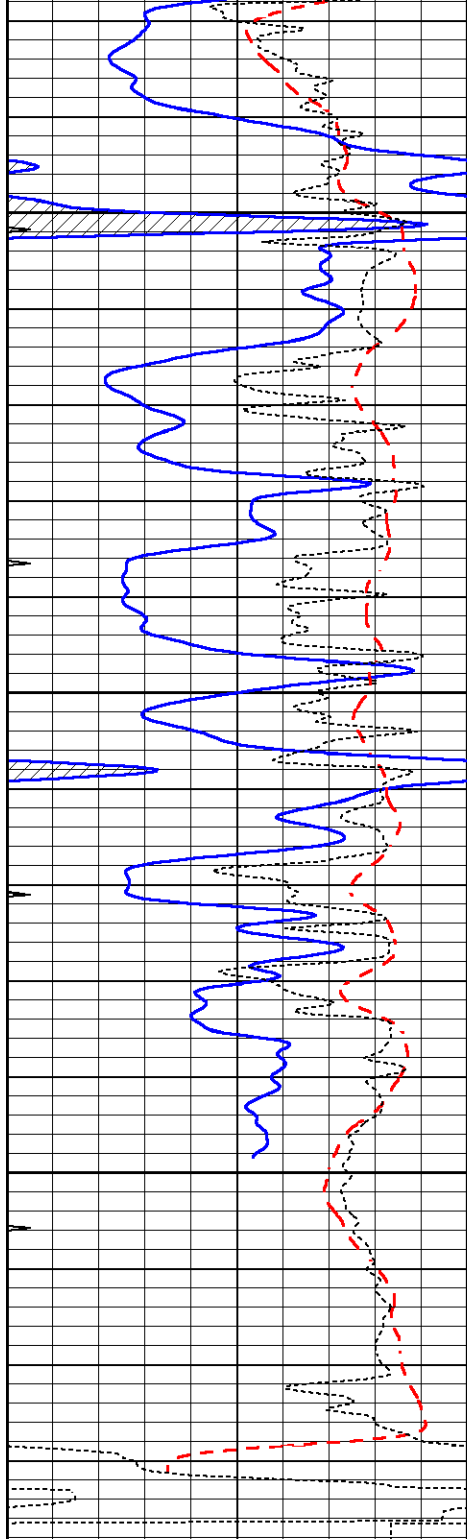
|      |                  |     |
|------|------------------|-----|
| 0    | GAMMA RAY (GAPI) | 150 |
| -100 | SP (mV)          | 100 |
| -250 | Rxo/Rt           | 50  |
| 0    | MINMK            | 20  |

|     |                          |      |
|-----|--------------------------|------|
| 0.2 | SHALLOW GUARD (Ohm-m)    | 2000 |
| 0.2 | DEEP INDUCTION (Ohm-m)   | 2000 |
| 0.2 | MEDIUM INDUCTION (Ohm-m) | 2000 |



3450



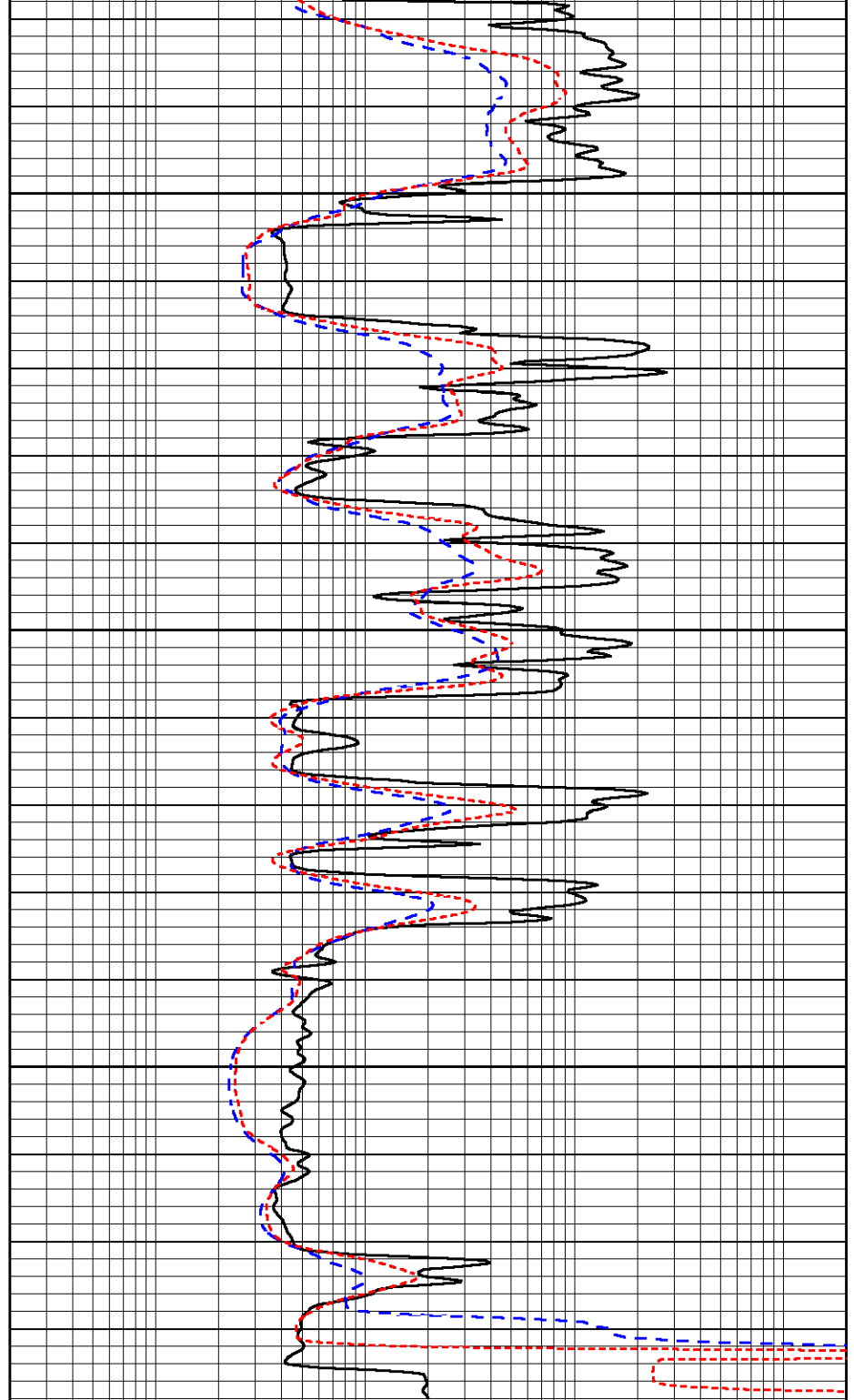


3500

3550

3600

|      |                  |     |
|------|------------------|-----|
| 0    | GAMMA RAY (GAPI) | 150 |
| -100 | SP (mV)          | 100 |
| -250 | Rxo/Rt           | 50  |
| 0    | MINMK            | 20  |



|     |                          |      |
|-----|--------------------------|------|
| 0.2 | SHALLOW GUARD (Ohm-m)    | 2000 |
| 0.2 | DEEP INDUCTION (Ohm-m)   | 2000 |
| 0.2 | MEDIUM INDUCTION (Ohm-m) | 2000 |

### Calibration Report

Database File 5429ddn.db  
 Dataset Pathname pass2.1  
 Dataset Creation Sat Apr 10 18:07:32 2021

### Dual Induction Calibration Report

Serial-Model: PROBE8-DILG  
 Surface Cal Performed: Mon Sep 10 14:28:35 2018  
 Downhole Cal Performed: Mon Sep 10 14:28:38 2018

| Surface Calibration |          |       |   |            |         |        |         |         |
|---------------------|----------|-------|---|------------|---------|--------|---------|---------|
| Loop:               | Readings |       |   | References |         |        | Results |         |
|                     | Air      | Loop  |   | Air        | Loop    |        | m       | b       |
| Deep                | 0.015    | 0.648 | V | 0.000      | 400.000 | mmho/m | 620.000 | 0.000   |
| Medium              | 0.029    | 0.796 | V | 0.000      | 464.000 | mmho/m | 590.000 | -12.000 |
| Internal:           | Zero     | Cal   |   | Zero       | Cal     |        | m       | b       |
| Deep                | 0.017    | 0.657 | V | 0.000      | 400.000 | mmho/m | 625.153 | -10.619 |
| Medium              | 0.016    | 0.757 | V | 0.000      | 464.000 | mmho/m | 625.992 | -9.739  |

| Downhole Calibration |          |        |        |            |          |        |         |       |
|----------------------|----------|--------|--------|------------|----------|--------|---------|-------|
|                      | Readings |        |        | References |          |        | Results |       |
|                      | Zero     | Cal    |        | Zero       | Cal      |        | m'      | b'    |
| Deep                 | 0.000    | 0.000  | mmho/m | 2.011      | 405.777  | mmho/m | 1.000   | 0.000 |
| Medium               | 0.000    | 0.000  | mmho/m | 7.590      | 503.393  | mmho/m | 1.000   | 0.000 |
| LL3                  |          | 7.500  | V      |            | 1500.000 | Ohm-m  |         |       |
|                      |          | 0.000  | V      |            | 20.000   | Ohm-m  |         |       |
|                      |          | -7.200 | V      |            | 3800.000 | mmho-m |         |       |

| After Survey Verification |          |       |        |         |       |        |         |       |
|---------------------------|----------|-------|--------|---------|-------|--------|---------|-------|
|                           | Readings |       |        | Targets |       |        | Results |       |
|                           | Zero     | Cal   |        | Zero    | Cal   |        | m'      | b'    |
| Deep                      | 0.000    | 0.000 | mmho/m | 0.000   | 0.000 | mmho/m | 0.000   | 0.000 |
| Medium                    | 0.000    | 0.000 | mmho/m | 0.000   | 0.000 | mmho/m | 0.000   | 0.000 |
| LL3                       |          | 1.000 | Ohm-m  |         | 1.000 | Ohm-m  |         |       |
|                           |          | 0.000 | Ohm-m  |         | 0.000 | Ohm-m  |         |       |
|                           |          | 1.000 | mmho-m |         | 1.000 | mmho-m |         |       |

Litho Density Calibration Report  
Serial: 001N      Model: PRB

| Master Calibration |            |             |          |                     | Performed Thu Mar 19 11:30:16 2020 |  |         |      |
|--------------------|------------|-------------|----------|---------------------|------------------------------------|--|---------|------|
|                    | Background | Magnesium   | Aluminum | Aluminum+Fe         |                                    |  |         |      |
| Window 1           | 1572.2     | 7510.8      | 2837.3   | 2643.1              |                                    |  |         | cps  |
| Window 2           | 1446.2     | 6523.9      | 2552.8   | 2409.9              |                                    |  |         | cps  |
| Window 3           | 1060.9     | 3611.4      | 1731.5   | 1684.8              |                                    |  |         | cps  |
| Window 4           | 145.5      | 363.4       | 363.2    | 368.1               |                                    |  |         | cps  |
| Long Space         | 0.0        | 5077.7      | 1106.6   | 963.7               |                                    |  |         | cps  |
| Short Space        | 3.1        | 1709.3      | 1103.4   | 916.9               |                                    |  |         | cps  |
| Rho                |            | 1.7100      | 2.5900   | 0.0000              |                                    |  |         | g/cc |
| Pe                 |            | 2.0000      | 2.7500   | 5.7900              |                                    |  |         |      |
| Rib Angle          | : 44.0     | Rib Slope   | : 0.965  | Density/Spine Ratio |                                    |  | : 0.555 |      |
| Spine Angle        | : 74.0     | Spine Slope | : 3.481  | Spine Intercept     |                                    |  | : -17.4 |      |

| Before Survey Verification |            |           |          |             | Performed Wed Dec 31 18:00:00 1969 |  |  |      |
|----------------------------|------------|-----------|----------|-------------|------------------------------------|--|--|------|
|                            | Background | Magnesium | Aluminum | Aluminum+Fe |                                    |  |  |      |
| Window 1                   | 0.0        | 0.0       | 0.0      | 0.0         |                                    |  |  | cps  |
| Window 2                   | 0.0        | 0.0       | 0.0      | 0.0         |                                    |  |  | cps  |
| Window 3                   | 0.0        | 0.0       | 0.0      | 0.0         |                                    |  |  | cps  |
| Window 4                   | 0.0        | 0.0       | 0.0      | 0.0         |                                    |  |  | cps  |
| Long Space                 | 0.0        | 0.0       | 0.0      | 0.0         |                                    |  |  | cps  |
| Short Space                | 0.0        | 0.0       | 0.0      | 0.0         |                                    |  |  | cps  |
| Measured Rho               |            | 0.0000    | 0.0000   | 0.0000      |                                    |  |  | g/cc |
| Measured Correction        |            | 0.0000    | 0.0000   | 0.0000      |                                    |  |  |      |

|                     |        |        |        |      |
|---------------------|--------|--------|--------|------|
| Measured Correction | 0.0000 | 0.0000 | 0.0000 | g/cc |
| Measured Pe         |        | 0.0000 | 0.0000 |      |

After Survey Verification Performed Wed Dec 31 18:00:00 1969

|                     |     |        |        |        |      |
|---------------------|-----|--------|--------|--------|------|
| Window 1            | 0.0 | 0.0    | 0.0    | 0.0    | cps  |
| Window 2            | 0.0 | 0.0    | 0.0    | 0.0    | cps  |
| Window 3            | 0.0 | 0.0    | 0.0    | 0.0    | cps  |
| Window 4            | 0.0 | 0.0    | 0.0    | 0.0    | cps  |
| Long Space          | 0.0 | 0.0    | 0.0    | 0.0    | cps  |
| Short Space         | 0.0 | 0.0    | 0.0    | 0.0    | cps  |
| Measured Rho        |     | 0.0000 | 0.0000 | 0.0000 | g/cc |
| Measured Correction |     | 0.0000 | 0.0000 | 0.0000 | g/cc |
| Measured Pe         |     |        | 0.0000 | 0.0000 |      |

Compensated Neutron Calibration Report

Serial Number: 6I  
Tool Model: G

CALIBRATION

| Detector    | Readings | Target   | Normalization |
|-------------|----------|----------|---------------|
| Short Space | 1.00 cps | 1.00 cps | 1.0000        |
| Long Space  | 1.00 cps | 1.00 cps | 1.0000        |

PRE-SURVEY VERIFICATION

|    | Detector    | Readings | Measured | Target |
|----|-------------|----------|----------|--------|
| 1) | Short Space | cps      |          |        |
|    | Long Space  | cps      | pu       | pu     |
| 2) | Short Space | cps      |          |        |
|    | Long Space  | cps      | pu       |        |
| 3) | Short Space | cps      |          |        |
|    | Long Space  | cps      | pu       |        |

POST-SURVEY VERIFICATION

|    | Detector    | Readings | Measured | Target |
|----|-------------|----------|----------|--------|
| 1) | Short Space | cps      |          |        |
|    | Long Space  | cps      | pu       | pu     |
| 2) | Short Space | cps      |          |        |
|    | Long Space  | cps      | pu       | pu     |
| 3) | Short Space | cps      |          |        |
|    | Long Space  | cps      | pu       | pu     |

Gamma Ray Calibration Report

Serial Number: GR6  
Tool Model: OPEN  
Performed: Thu Jul 30 20:04:35 2020

Calibrator Value: 150.0 GAPI

Background Reading: 0.0 cps  
Calibrator Reading: 276.0 cps

Sensitivity:

0.7500

GAPI/cps