



RADIAL BOND LOG WITH GAMMA RAY

MIDWEST WIRELINE

Comp. Citadel Oil, LLC
Well Shay 1-22
Field
Co. Lane
State KANSAS

Company Citadel Oil, LLC
Well Shay 1-22
Field
County Lane State KANSAS

Location: API # : 15-101-20799-00-01 Other Services
C-SE-NE-NW

Permanent Datum SEC 21 TWP 16S RGE 28W
Log Measured From GL KB 9 Elevation 2732
Drilling Measured From KB Above Perm. Datum
K.B. 2746
D.F.
G.L. 2737

Date of Service	1-18-23			
Run Number	ONE			
Depth Driller or PBTID	4395			
Depth Logger	4395			
Bottom Log Interval	4382			
Top Log Interval	Surface			
Open Hole Size	7.875			
Type Fluid	Water			
Fluid Level	Full			
Fluid Density	8.4			
Max. Recorded Temperature	117			
Max. Wellhead Pressure	00			
Wellhead Connection	Head			
Estimated Cement Top				
Unit Number	P106			
Wireline Size	.288			
Location	Hays			
Recorded By	JTROUT			
Witnessed By	Kyle Carver			
Tubing Record	Size	WFt	Top	Bottom
Surface Casing	8.675	23	00	380
Production Casing	5.5	14	00	TD
Liner Record				

<<< Fold Here >>>

All interpretations are opinions based on inferences from electrical or other measurements and Midwest Wireline LLC cannot and does not guarantee the accuracy or correctness of any interpretation, and Midwest Wireline LLC will not be liable or responsible for any loss, costs, damages, or expenses incurred or sustained by anyone resulting from any interpretation made by any of our officers, agents or employees.

Comments

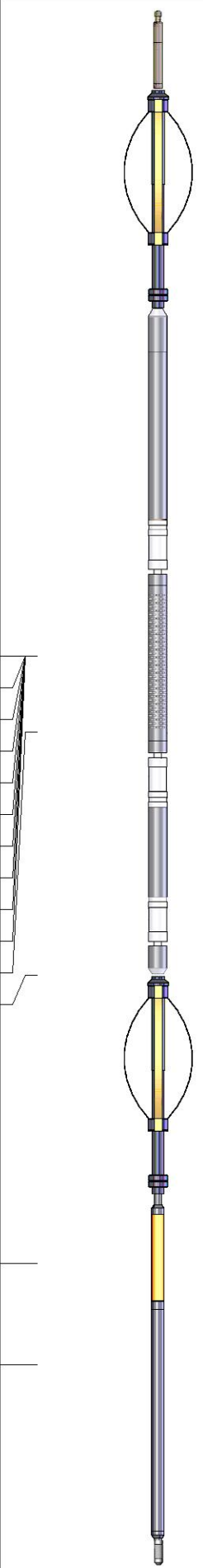
N/A DENOTES NOT AVAILABLE OR NON-APPLICABLE.

HWY 4 & 23 Junction 1 1/2 E to Loreda Rd, 1 3/4 N E into

THANK YOU FOR USING MIDWEST WIRELINE LLC!

Your Midwest Wireline Crew	Tool Data - Services	Serial Number
Engineer: Operator: Operator: Operator:		

Operator	Offset (ft)	Substrate	Description	Length (ft)	O.D. (in)	Weight (lb)
----------	-------------	-----------	-------------	-------------	-----------	-------------

Sensor	Offset (ft)	Schematic	Description	Length (ft)	O.D. (in)	Weight (lb)
			Cable Head-Titan_144 1 7/16" Titan Cable Head	1.03	1.44	2.00
			Centralizer-275 Probe 2 3/4" Probe Adjustable Spring Centralizer	2.88	2.75	15.00
WVFS8	11.94		PROBE-RBT-DIGITAL-RBL-D (PR-012) Probe 2 3/4" Radii Bond-Digital	8.75	2.75	100.00
WVFS7	11.94					
WVFS6	11.94					
WVFS5	11.94					
WVFS4	11.94					
WVFS3	11.94					
WVFS2	11.94					
WVFS1	11.94					
WVFCAL	11.94					
WVF3FT	11.94					
WVF5FT	10.94					
HEADVOLT	7.75					
			Centralizer-275 Probe 2 3/4" Probe Adjustable Spring Centralizer	2.88	2.75	15.00
CCL	3.96					
GR	2.63		GR_CCL-2 3/4" Probe (060802)	4.54	2.75	50.00
			Bullnose-PROBE Probe Go Pin Pressure Cap	0.33	1.38	1.00

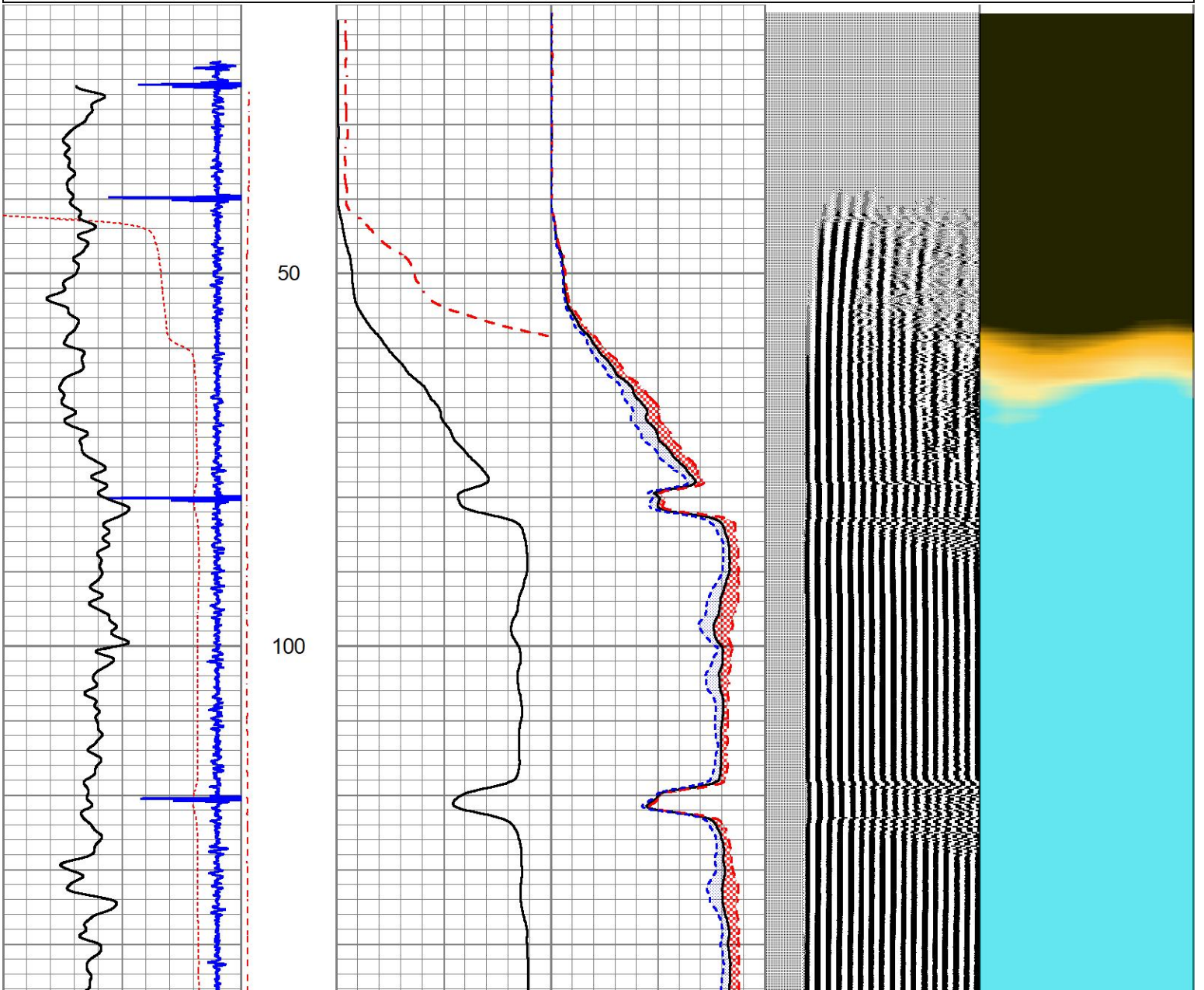
Dataset: citadel.db: field/well/run1/pass6
 Total length: 20.41 ft
 Total weight: 183.00 lb
 O.D.: 2.75 in

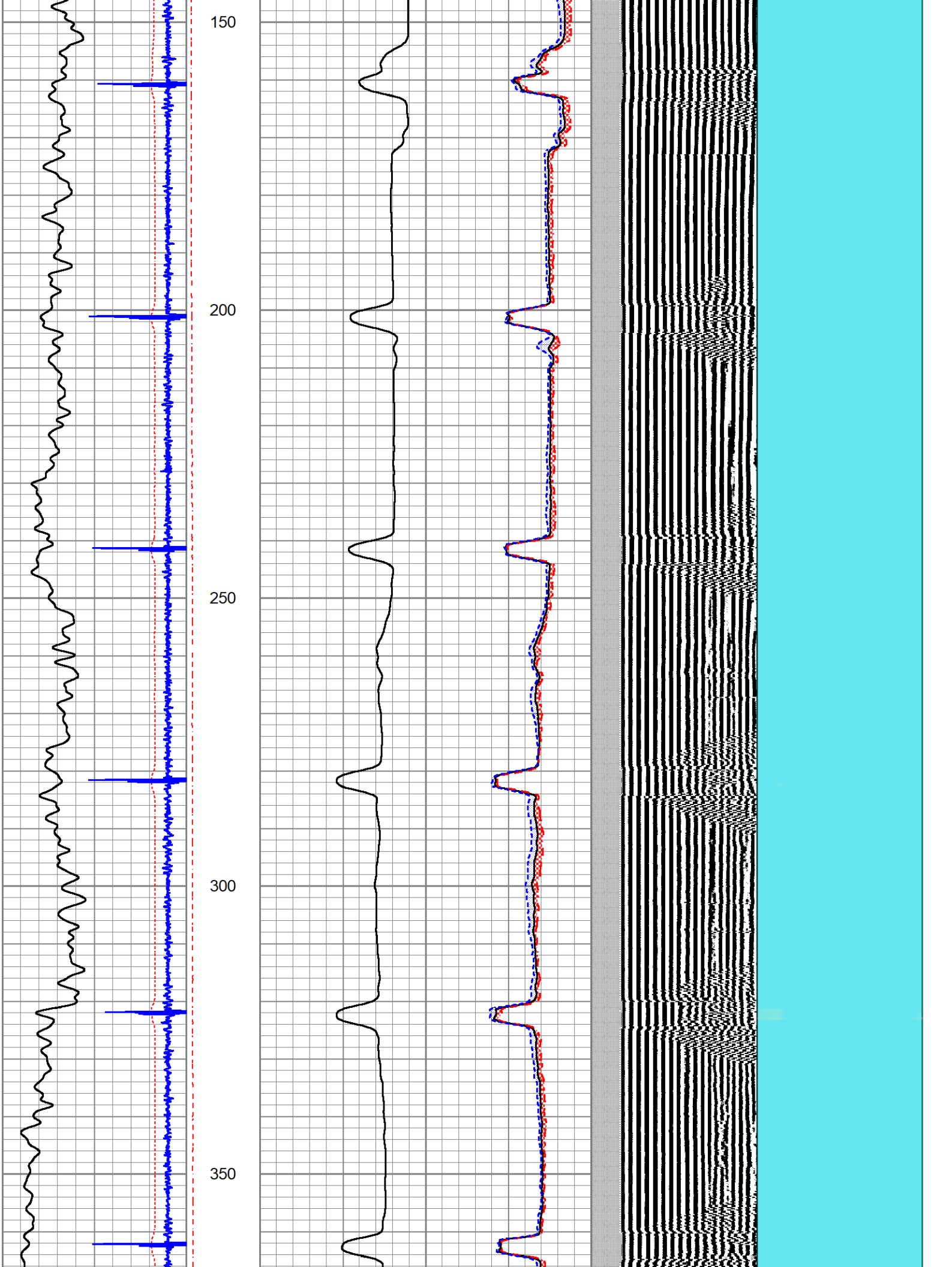


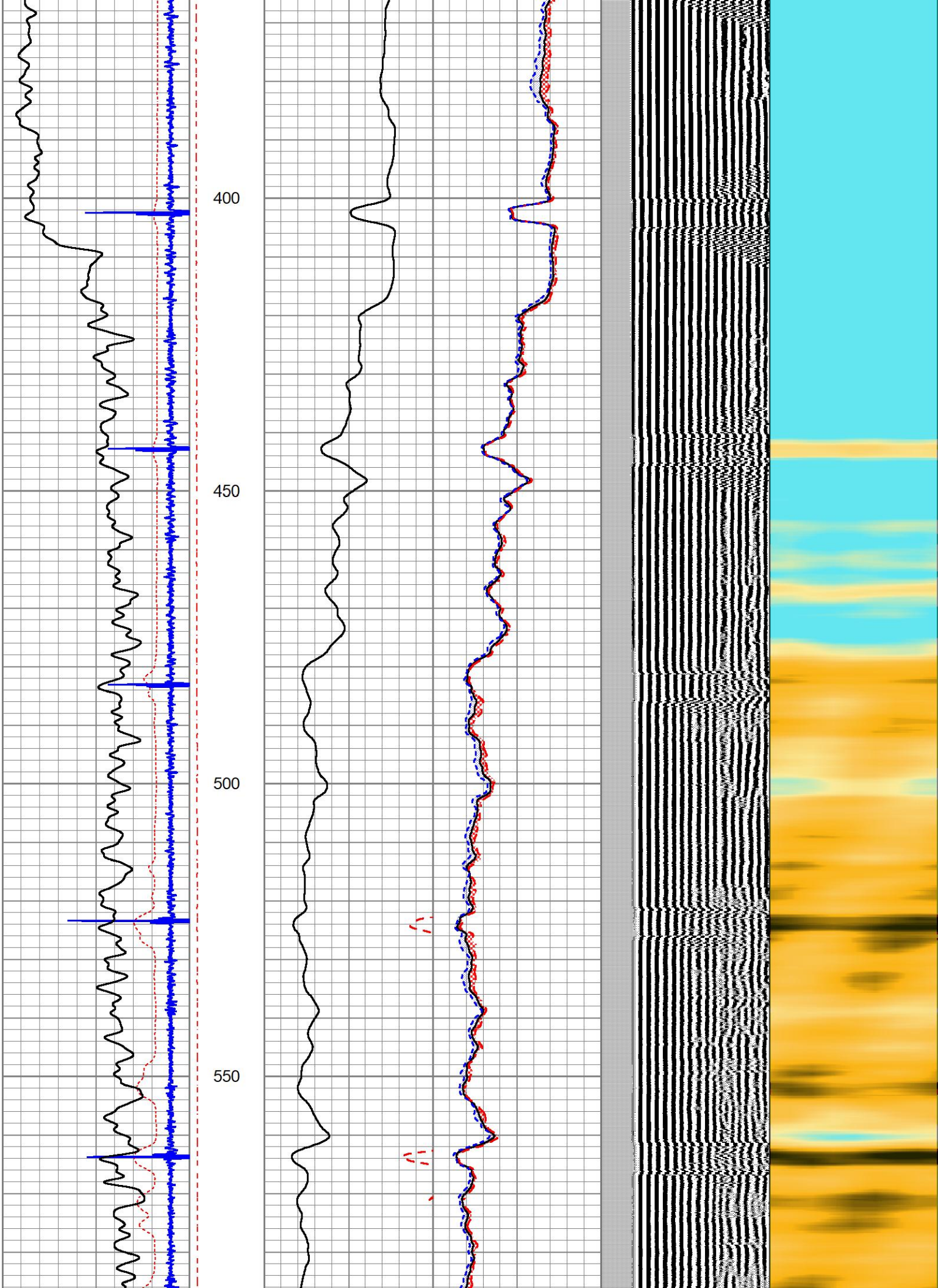
Top Section

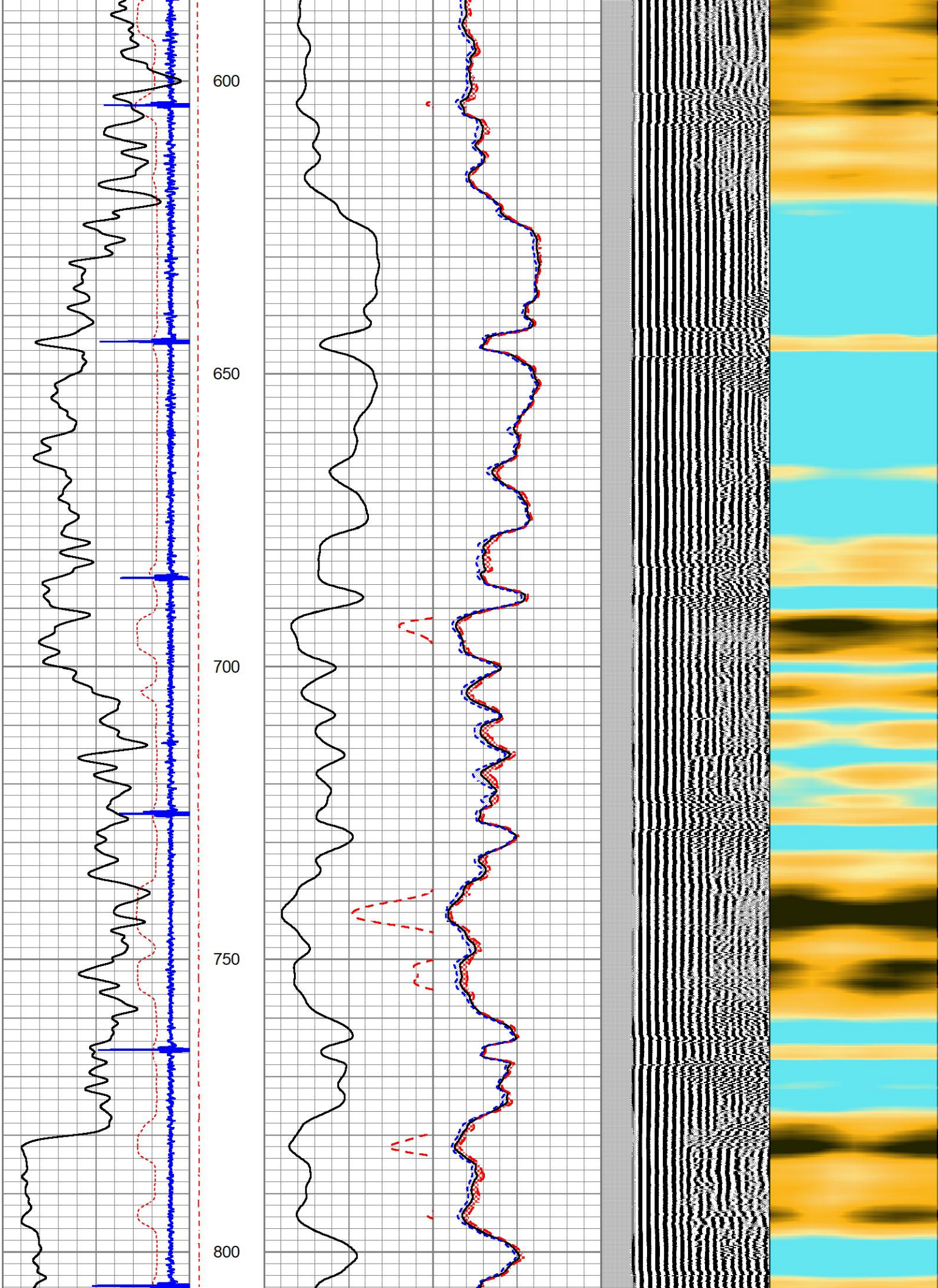
Database File: citadel.db
 Dataset Pathname: pass6
 Presentation Format: PINR_S~1
 Dataset Creation: Wed Jan 18 14:07:46 2023
 Charted by: Depth in Feet scaled 1:240

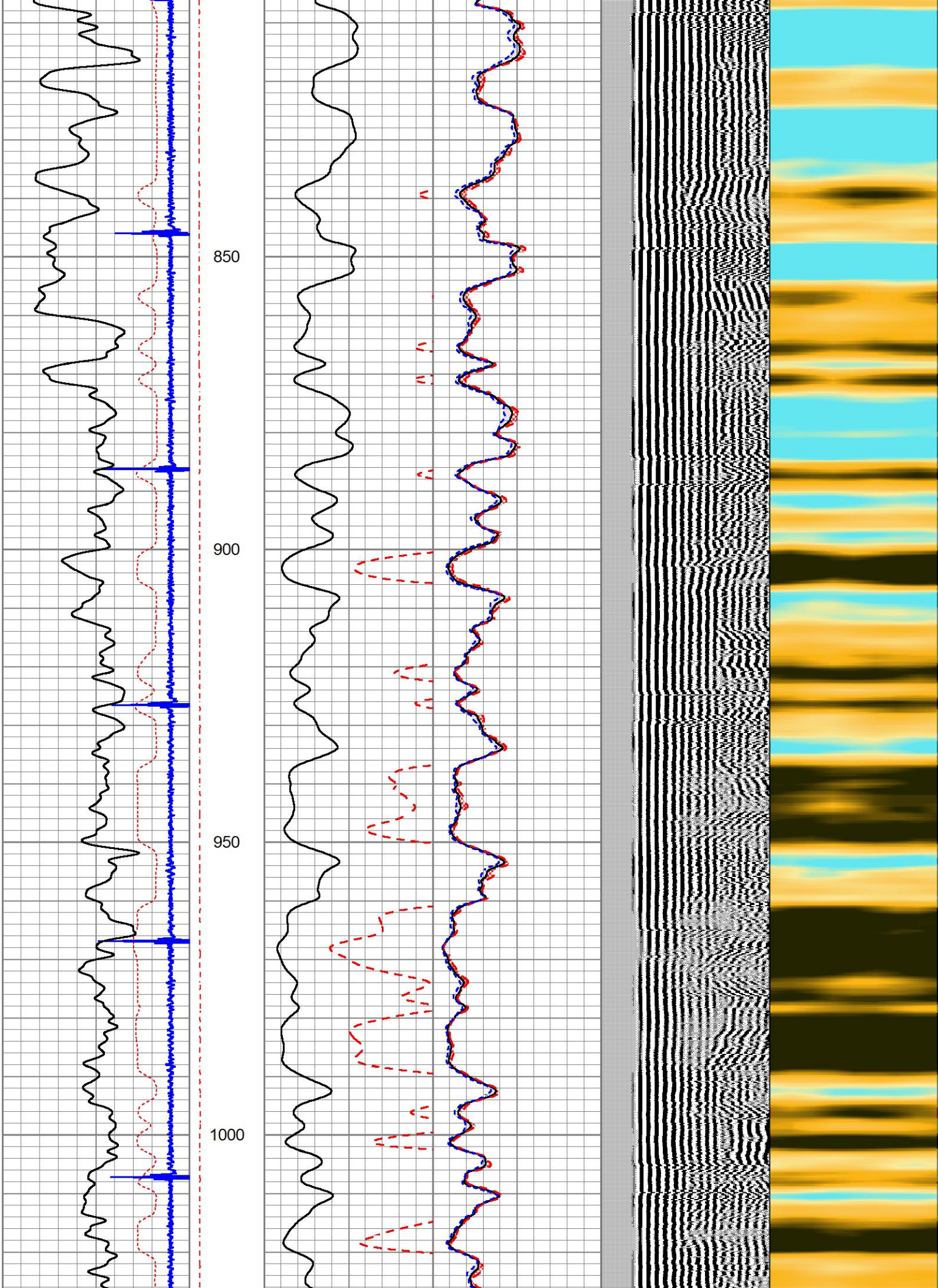
3' Travel Time	Line Tension	3' Amplitude (mV)	Sector Amplitude Average	200 VDL (usec) 1200	1 Sector Map 8
600 (usec) 200	0 (12000)	0 100	0 150		
-9 Collar Locator 1		3' Amplified Amplitude X 5	Sector Amplitude Maximum		
0 Gamma Ray 150		0 20	0 150		
			Sector Amplitude Minimum		
			0 150		

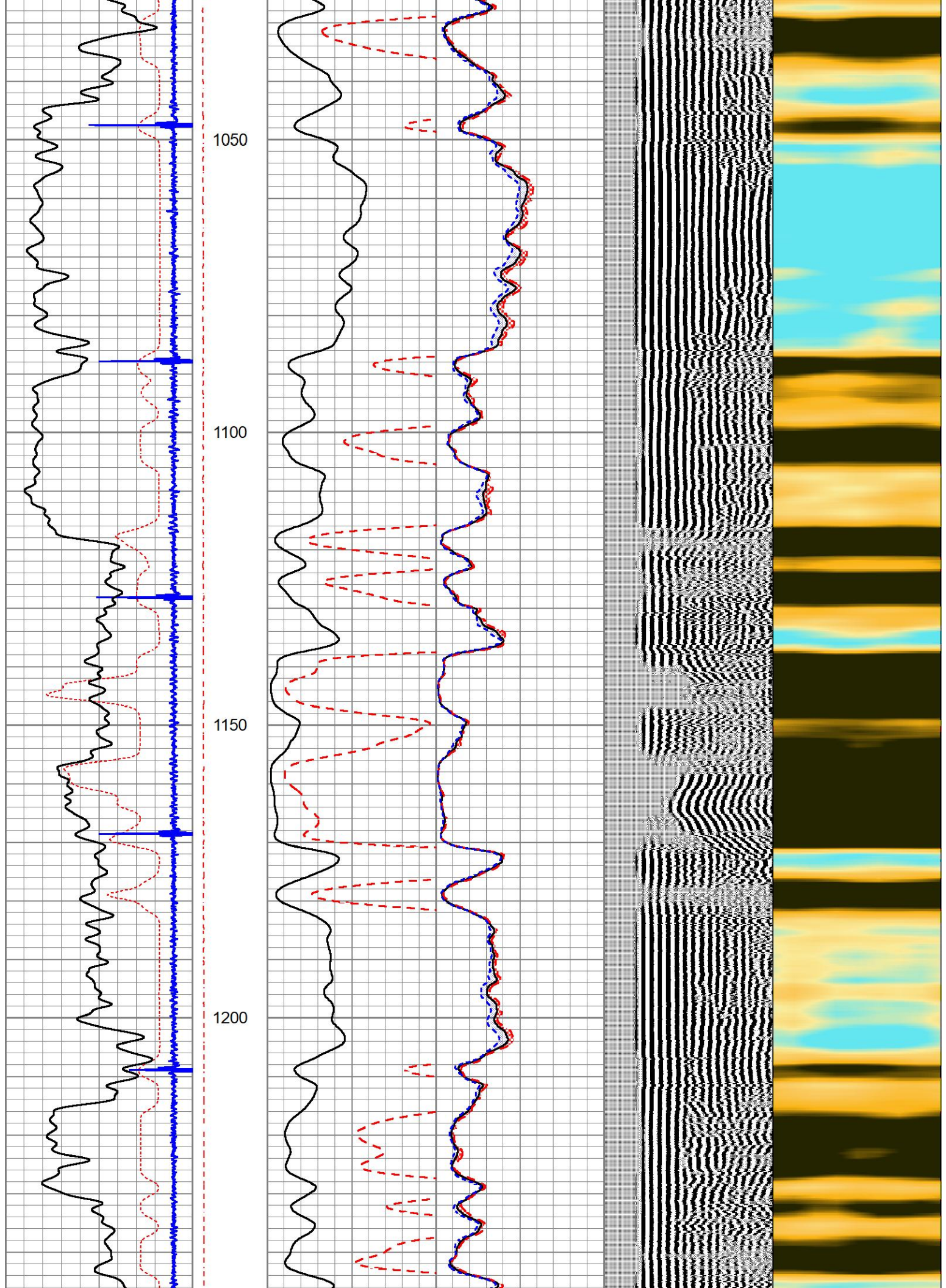


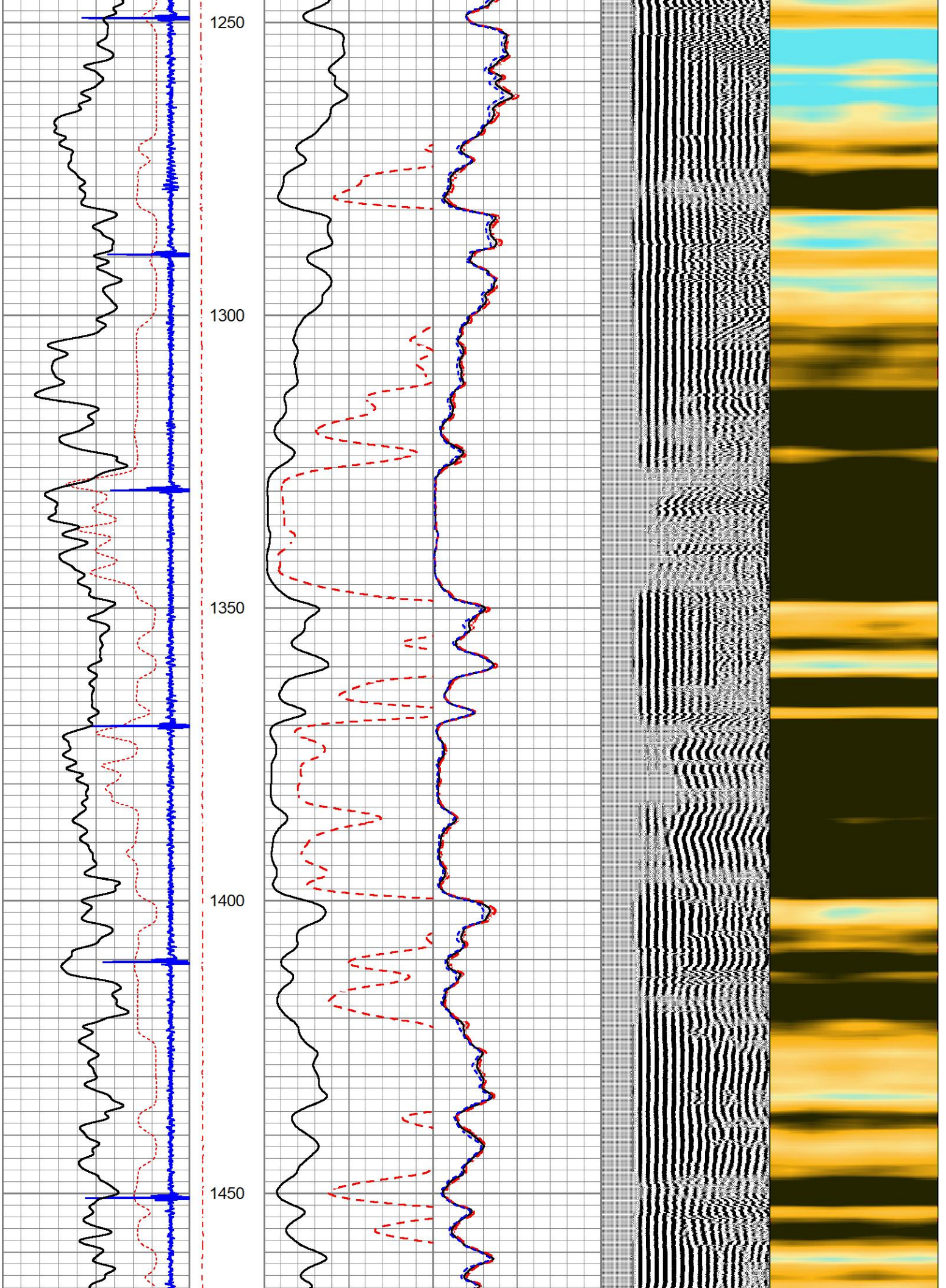


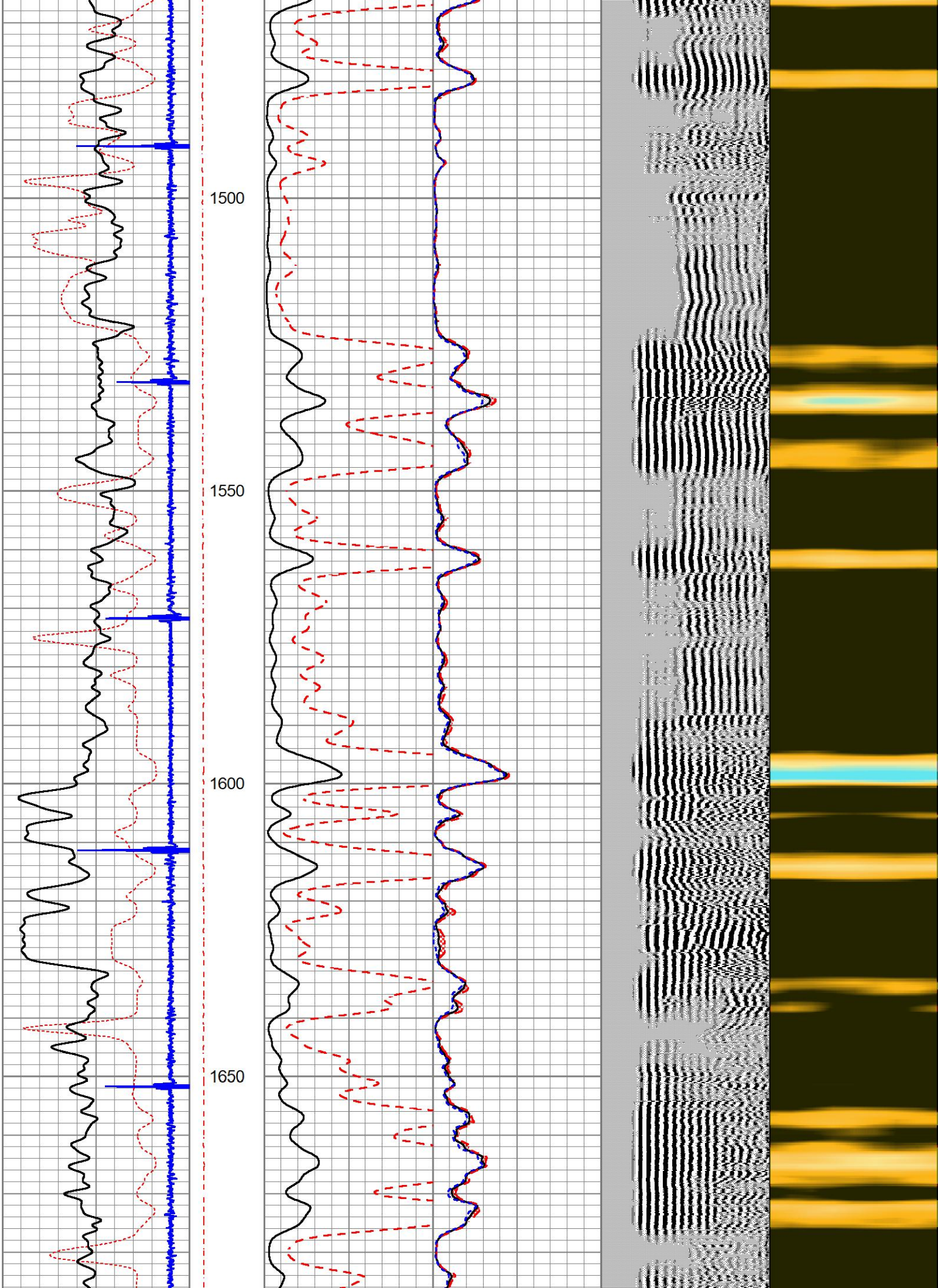


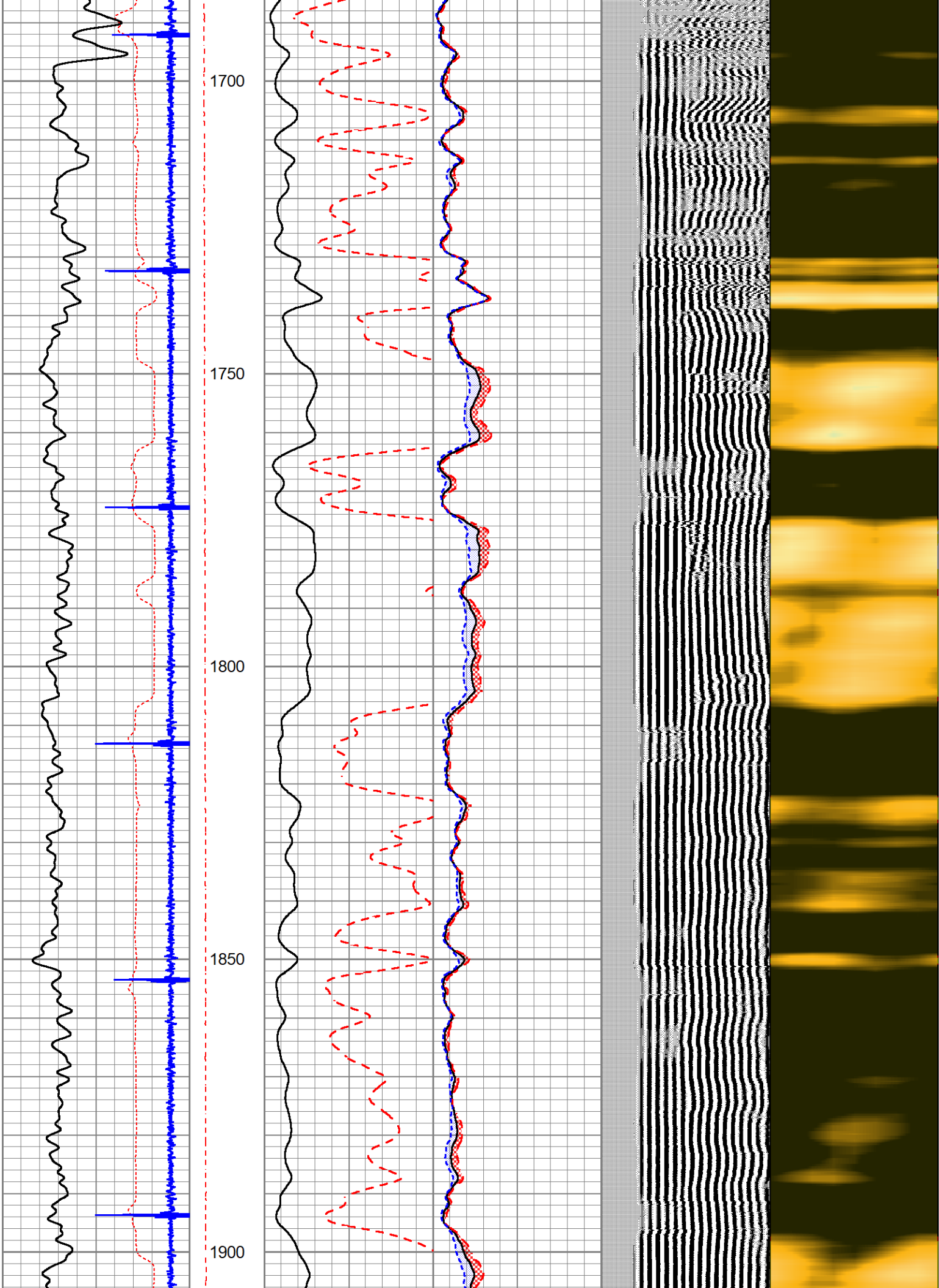


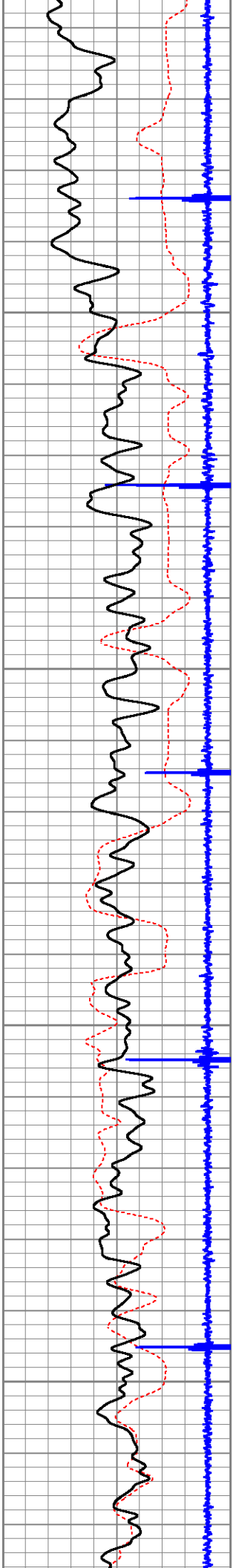










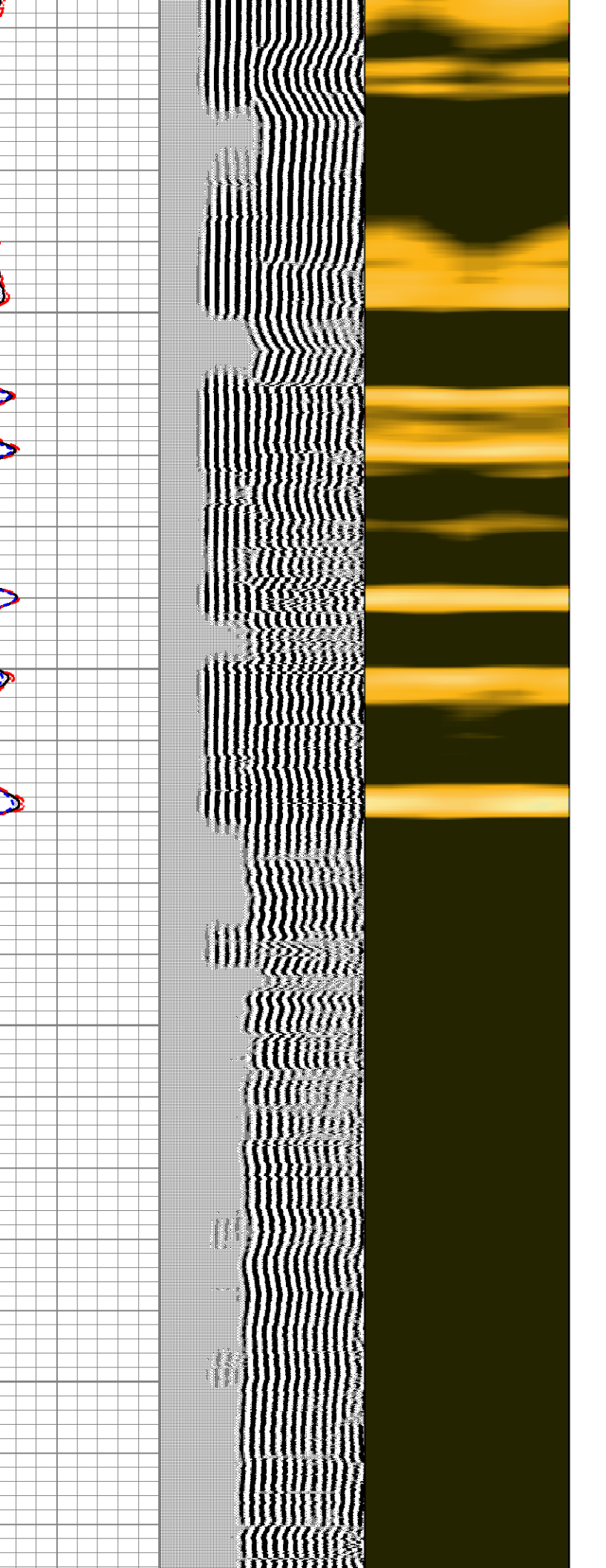
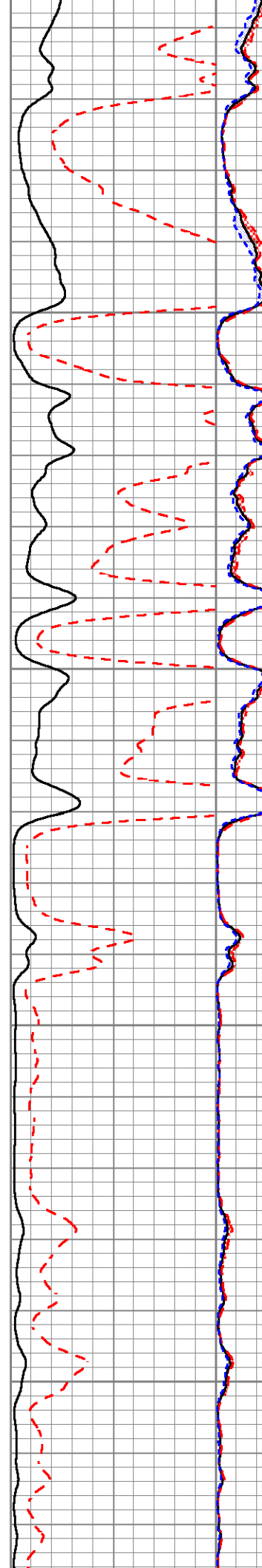


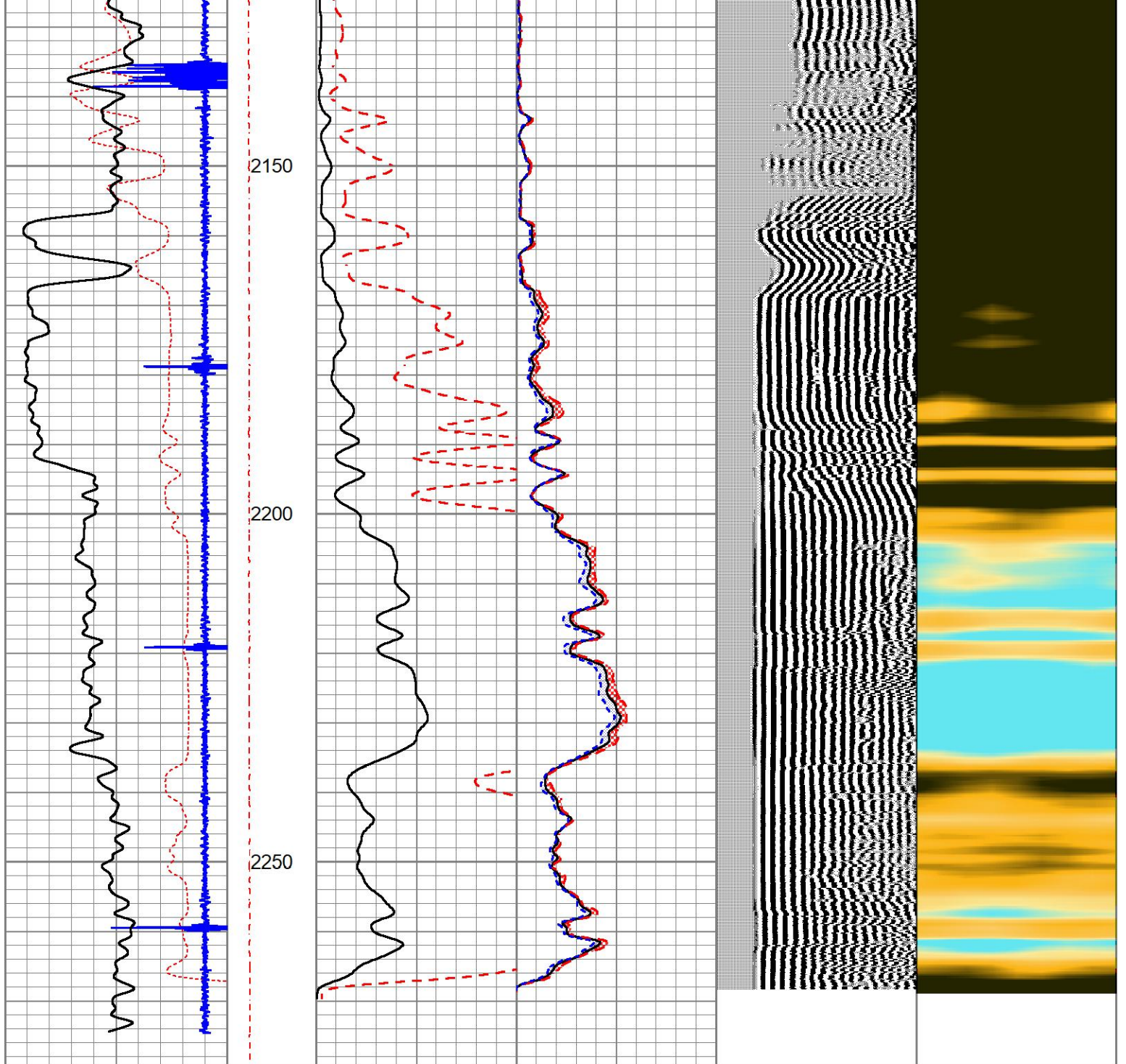
1950

2000

2050

2100





3' Travel Time		Line Tension	3' Amplitude (mV)		Sector Amplitude Average	200 VDL (usec) 1200	1 Sector Map 8
600 (usec)	200		0	100			
-9 Collar Locator 1		0 (12000)	3' Amplified Amplitude X 5 (mV)		Sector Amplitude Maximum	0 150	0 150
0 Gamma Ray 150			0	20	Sector Amplitude Minimum		
					0 150		

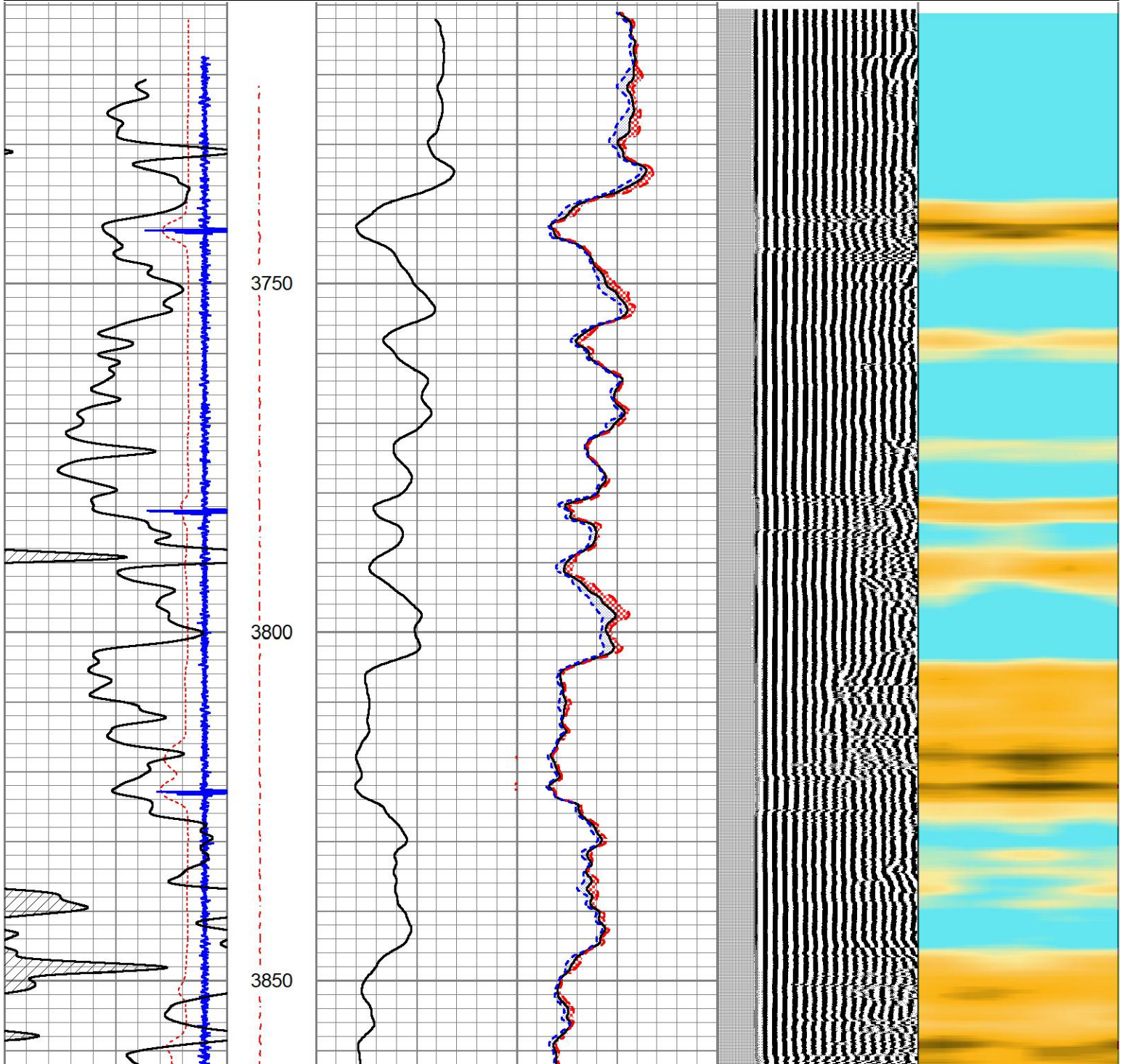


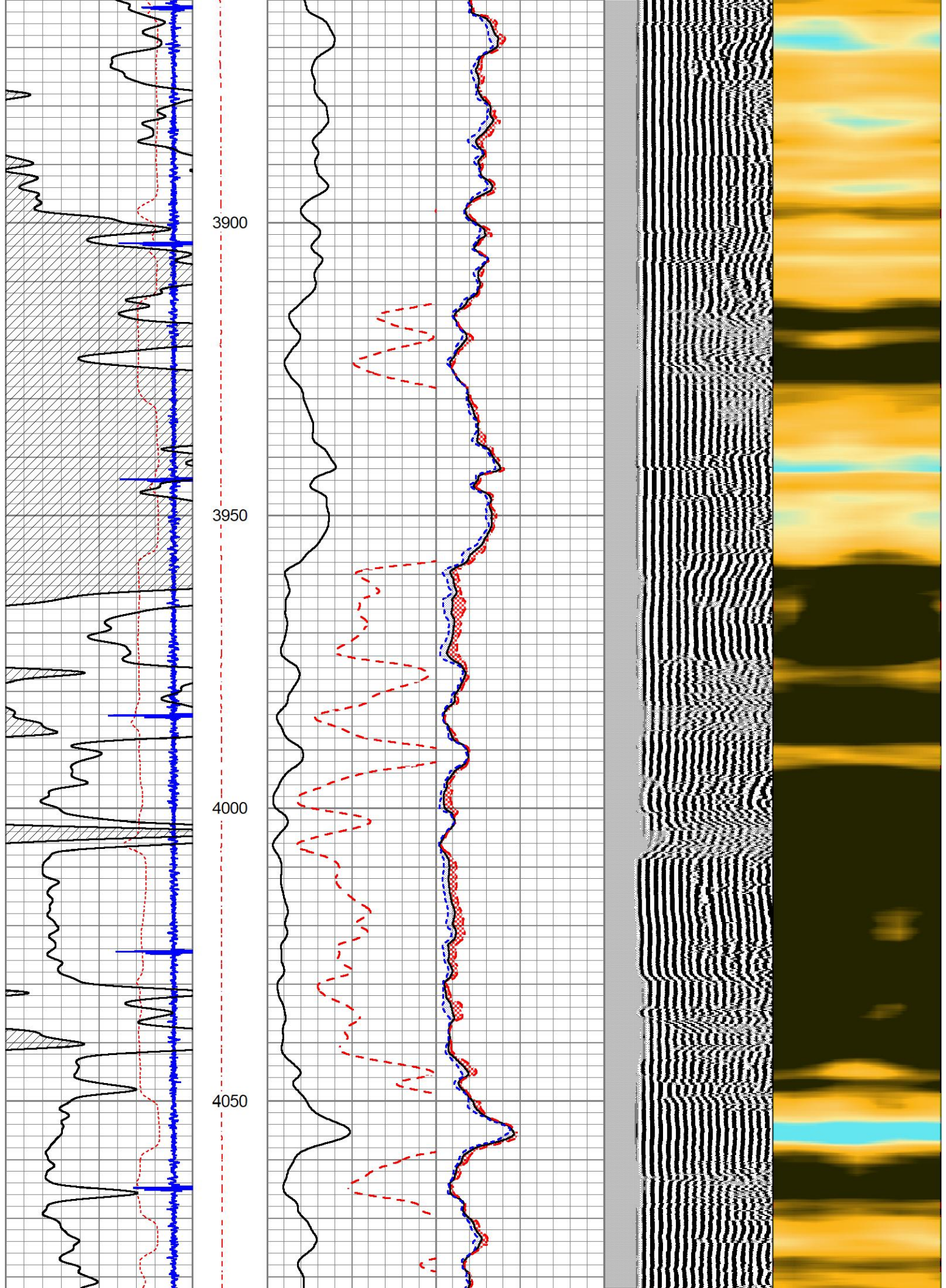
MAIN LOG

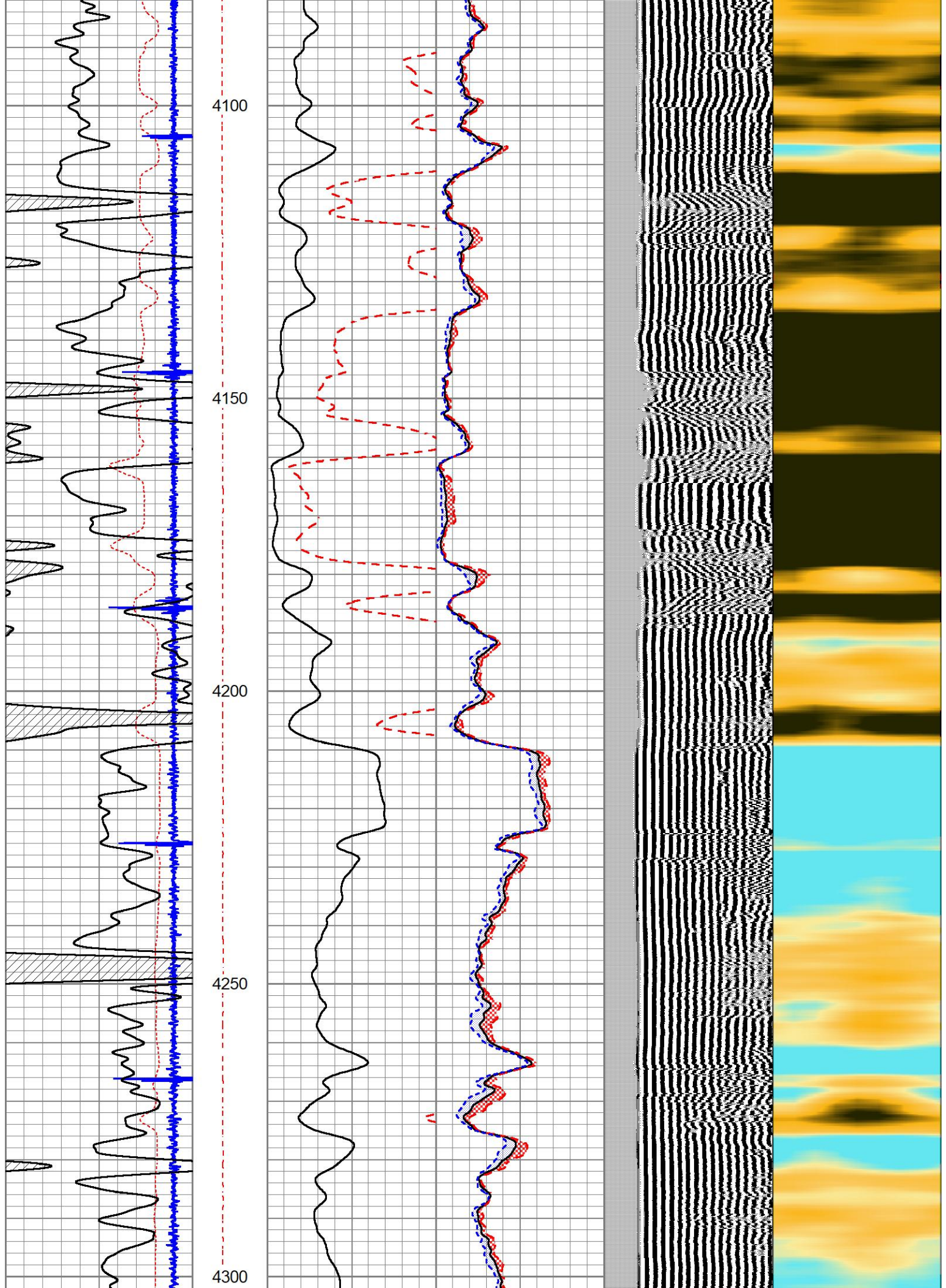
ZERO PSI APPLIED AT SURFACE

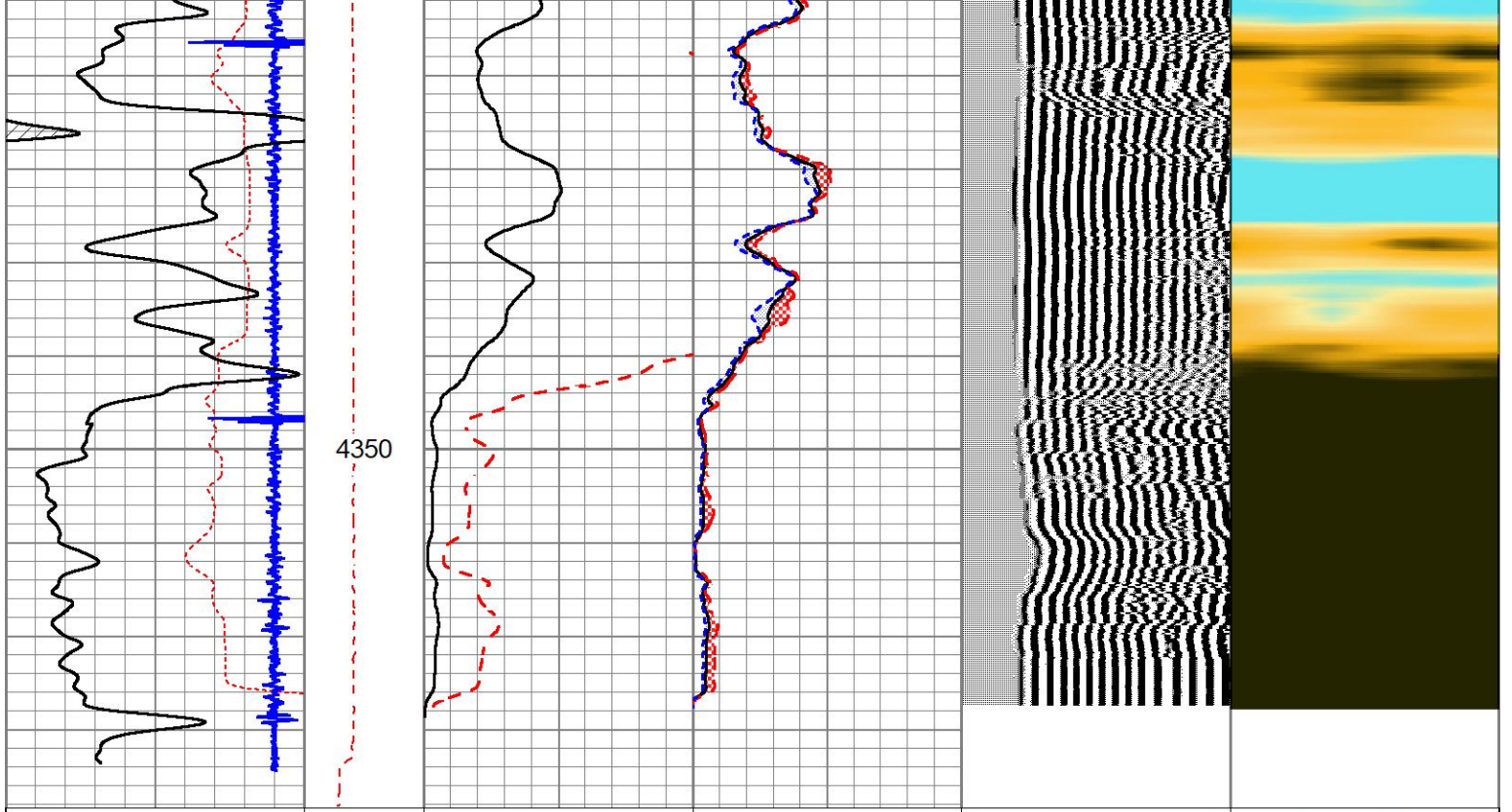
Database File citadel.db
 Dataset Pathname pass5
 Presentation Format PINR_S~1
 Dataset Creation Wed Jan 18 13:46:19 2023
 Charted by Depth in Feet scaled 1:240

3' Travel Time		Line Tension 0 (12000)	3' Amplitude (mV)		Sector Amplitude Average		200 VDL (usec) 1200	1 Sector Map 8
600 (usec)	200		0	100	0	150		
-9 Collar Locator 1			3' Amplified Amplitude X 5		Sector Amplitude Maximum			
0	Gamma Ray 150		0	20	0	150		
				Sector Amplitude Minimum				
				0	150			
				0	150			









3' Travel Time		Line Tension	3' Amplitude		Sector Amplitude Average	200 VDL (usec) 1200	1	Sector Map	8			
600	(usec)		200	0						100	0	150
-9	Collar Locator		1	3' Amplified Amplitude X 5						0	150	
0	Gamma Ray	150	0	20	0	150	Sector Amplitude Maximum					
					0	150	Sector Amplitude Minimum					
					0	150						

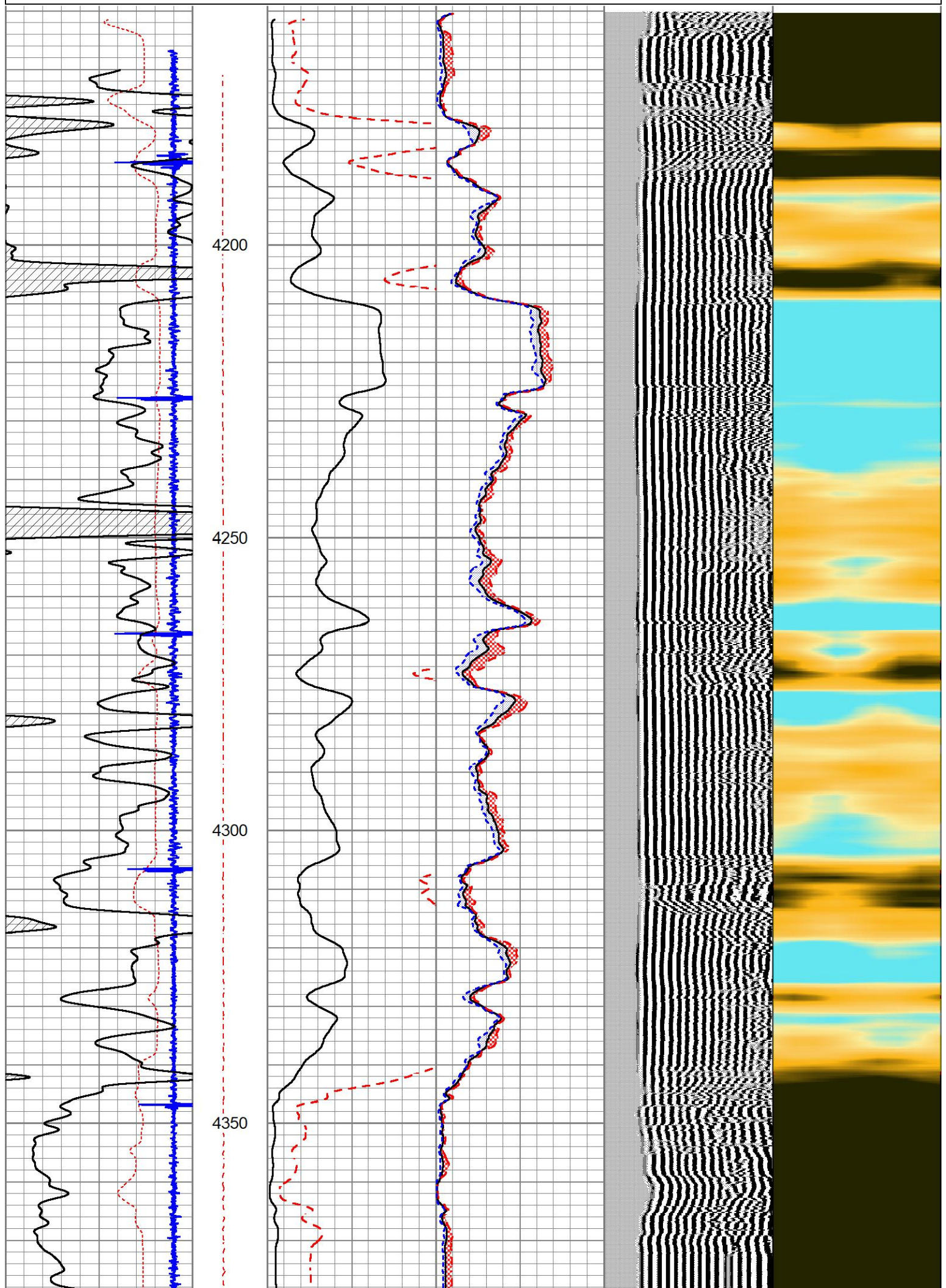


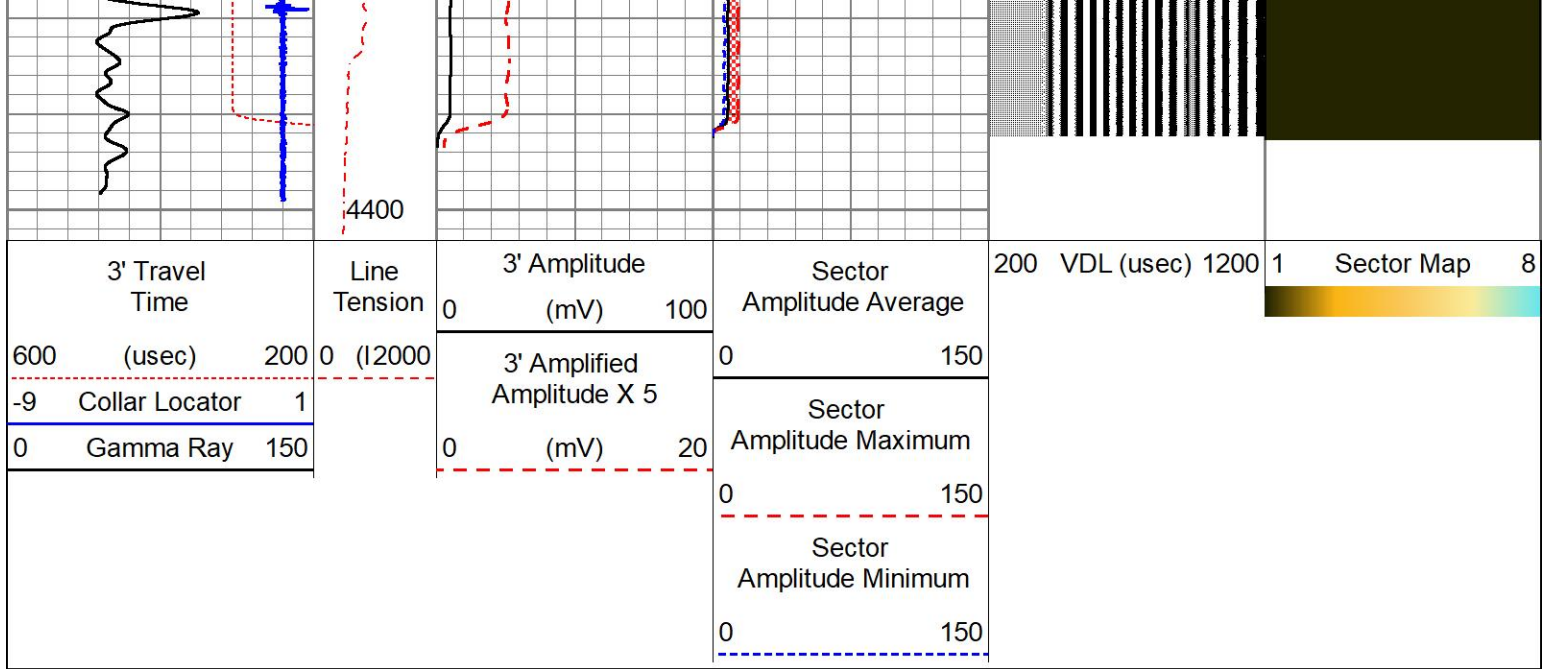
REPEAT SECTION

ZERO PSI APPLIED AT SURFACE

Database File: citadel.db
 Dataset Pathname: pass4
 Presentation Format: PINR_S~1
 Dataset Creation: Wed Jan 18 13:39:05 2023
 Charted by: Depth in Feet scaled 1:240

3' Travel Time		Line Tension	3' Amplitude		Sector Amplitude Average	200 VDL (usec) 1200	1	Sector Map	8			
600	(usec)		200	0						100	0	150
-9	Collar Locator		1	3' Amplified Amplitude X 5						0	150	
0	Gamma Ray	150	0	20	0	150	Sector Amplitude Maximum					
					0	150	Sector Amplitude Minimum					
					0	150						





Calibration Report

Database File citadel.db
 Dataset Pathname pass6
 Dataset Creation Wed Jan 18 14:07:46 2023

Gamma Ray Calibration Report

Serial Number: 060802
 Tool Model: 2 3/4" Probe
 Performed: Mon Oct 31 15:56:50 2022

Calibrator Value: 1.0

Background Reading: 0.0 cps
 Calibrator Reading: 1.0 cps

Sensitivity: 0.6500 /cps

Segmented Cement Bond Log Calibration Report

Serial Number: PR-012
 Tool Model: RBL-D

Calibration Casing Diameter: 5.500 in
 Calibration Depth: 2879.410 ft

Master Calibration, performed Mon Jan 16 10:18:17 2023:

	Raw (v)		Calibrated (mv)		Results	
	Zero	Cal	Zero	Cal	Gain	Offset
3'	0.003	2.004	0.700	71.921	35.592	0.586
CAL	0.004	2.499				
5'	0.003	1.896	0.700	71.921	37.616	0.587
SUM						
S1	0.003	2.039	0.000	100.000	49.114	-0.155
S2	0.003	2.003	0.000	100.000	50.008	-0.155
S3	0.003	1.940	0.000	100.000	51.628	-0.146
S4	0.003	1.898	0.000	100.000	52.780	-0.158
S5	0.003	1.934	0.000	100.000	51.781	-0.156
S6	0.003	1.999	0.000	100.000	50.105	-0.148
S7	0.003	2.000	0.000	100.000	50.068	-0.148
S8	0.003	2.012	0.000	100.000	49.769	-0.151

Air Zero Calibration, performed Fri Jan 13 11:08:18 2023:

	Raw (v)	Calibrated (v)	Results
	<u>Zero</u>	<u>Zero</u>	<u>Offset</u>
3'	0.000	0.000	0.000
5'	0.000	0.000	0.000
SUM			
S1	0.000	0.000	0.000
S2	0.000	0.000	0.000
S3	0.000	0.000	0.000
S4	0.000	0.000	0.000
S5	0.000	0.000	0.000
S6	0.000	0.000	0.000
S7	0.000	0.000	0.000
S8	0.000	0.000	0.000