



# RADIAL BOND LOG WITH GAMMA RAY

MIDWEST WIRELINE

Comp. Shakespeare Oil Company, Inc  
 Well Otley #4-10  
 Field Chalk Buttes  
 Co. Logan  
 State Kansas

Company Shakespeare Oil Company, Inc  
 Well Otley #4-10  
 Field Chalk Buttes  
 County Logan State Kansas

Location: API #: 15-109-21667-00-00  
 513' FSL & 1612' FEL  
 NE-SE-SW-SE  
 SEC 10 TWP 14S RGE 32W  
 Permanent Datum Ground Level Elevation 2768  
 Log Measured From KB 9' Above Perm. Datum  
 Drilling Measured From KB  
 Other Services  
 Elevation  
 K.B. 2977  
 D.F.  
 G.L. 2968

Date of Service	6/13/2023		
Run Number	One		
Depth Driller or PBTD	5030		
Depth Logger	4920		
Bottom Log Interval	4918		
Top Log Interval	3350		
Open Hole Size	7.875		
Type Fluid	Water		
Fluid Level	190		
Fluid Density	8.4		
Max. Recorded Temperature	125		
Max. Wellhead Pressure	00		
Wellhead Connection	Head		
Estimated Cement Top	3436		
Unit Number	106		
Wireline Size	.288		
Location	Hays		
Recorded By	Phil Rome		
Witnessed By	Brian Cable		
	Size	WFt	Bottom
Tubing Record			
Surface Casing	8.625	23	264
Production Casing	5.5	15.5	TD
Liner Record			

<<< Fold Here >>>

All interpretations are opinions based on inferences from electrical or other measurements and Midwest Wireline LLC cannot and does not guarantee the accuracy or correctness of any interpretation, and Midwest Wireline LLC will not be liable or responsible for any loss, costs, damages, or expenses incurred or sustained by anyone resulting from any interpretation made by any of our officers, agents or employees.

### Comments

N/A DENOTES NOT AVAILABLE OR NON-APPLICABLE.

Oakley, Ks  
 19 S on 83  
 West into

THANK YOU FOR USING MIDWEST WIRELINE LLC!

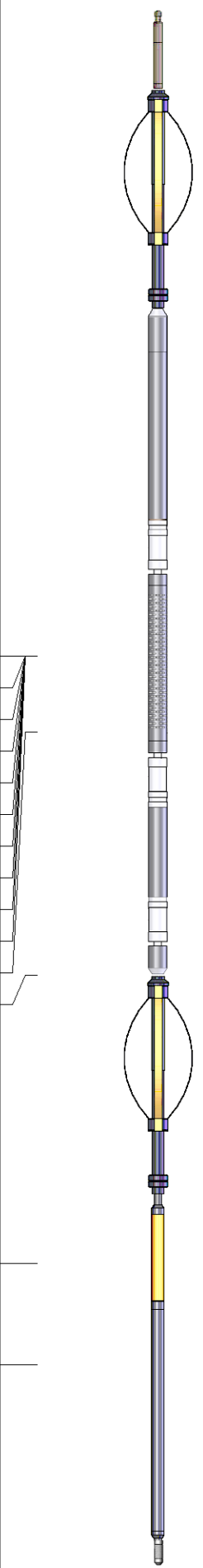
Your Midwest Wireline Crew

Tool Data - Services

Serial Number

Engineer: Phil Rome  
 Operator:  
 Operator:  
 Operator:

Operator	Offset (ft)	Substrate	Description	Length (ft)	O.D. (in)	Weight (lb)
----------	-------------	-----------	-------------	-------------	-----------	-------------

Sensor	Offset (ft)	Schematic	Description	Length (ft)	O.D. (in)	Weight (lb)	
			Cable Head-Titan_144 1 7/16" Titan Cable Head	1.03	1.44	2.00	
			Centralizer-275 Probe 2 3/4" Probe Adjustable Spring Centralizer	2.88	2.75	15.00	
			PROBE-RBT-DIGITAL-RBL-D (PR-012) Probe 2 3/4" Radii Bond-Digital	8.75	2.75	100.00	
WVFS8	11.94						
WVFS7	11.94						
WVFS6	11.94						
WVFS5	11.94						
WVFS4	11.94						
WVFS3	11.94						
WVFS2	11.94						
WVFS1	11.94						
WVFCAL	11.94						
WVF3FT	11.94						
WVF5FT	10.94						
HEADVOLT	7.75						
			Centralizer-275 Probe 2 3/4" Probe Adjustable Spring Centralizer	2.88	2.75	15.00	
CCL	3.96						
GR	2.63		GR_CCL-2 3/4" Probe (060802)	4.54	2.75	50.00	
			Bullnose-PROBE Probe Go Pin Pressure Cap	0.33	1.38	1.00	

Dataset: shakespear\_ottley #4-10.db: field/well/SCBL/pass4  
 Total length: 20.41 ft  
 Total weight: 183.00 lb  
 O.D.: 2.75 in

# Log Variables

DatabaseC:\ProgramData\Warrrior\Data\shakespeare\_ottley #4-10.db  
 Dataset field/well/SCBL/pass4/\_vars\_

## Top - Bottom

BOREID in 7.875	BOTTEMP degF 125	CASEOD in 5.5	CASETHCK in 0.275	CASEWGHT lb/ft 15.5	MAXAMPL mV 0	MINAMPL mV 1	MINATTN db/ft 0.08
PERFS 0	PPT usec 0	SRFTEMP degF 0	TDEPTH ft 0				

## Variable Description

BOREID : Borehole I.D.  
 BOTTEMP : Bottom Hole Temperature  
 CASEOD : Casing O.D.  
 CASETHCK : Casing Thickness

CASEWGHT : Casing Weight  
 MAXAMPL : Maximum Amplitude  
 MINAMPL : Minimum Amplitude  
 MINATTN : Minimum Attenuation

PERFS : Perforation Flag  
 PPT : Predicted Pipe Time  
 SRFTEMP : Surface Temperature  
 TDEPTH : Total Depth



MIDWEST WIRELINE

## FREE PIPE SECTION

ZERO PSI APPLIED AT SURFACE

Database File       shakespeare\_ottley #4-10.db  
 Dataset Pathname   SCBL/pass2  
 Presentation Format   PINR\_S~1  
 Dataset Creation    Tue Jun 13 11:14:33 2023  
 Charted by         Depth in Feet scaled 1:240

3' Travel Time	Line Tension	3' Amplitude (mV)	Sector Amplitude Average	200	VDL (usec)	1200	1	Sector Map	8
600 (usec)	0 (12000)	0	0	150					
-9 Collar Locator		3' Amplified Amplitude X 5	Sector Amplitude Maximum	0					
0 Gamma Ray		0 (mV)	0	150					
			Sector Amplitude Minimum	0					
			0	150					



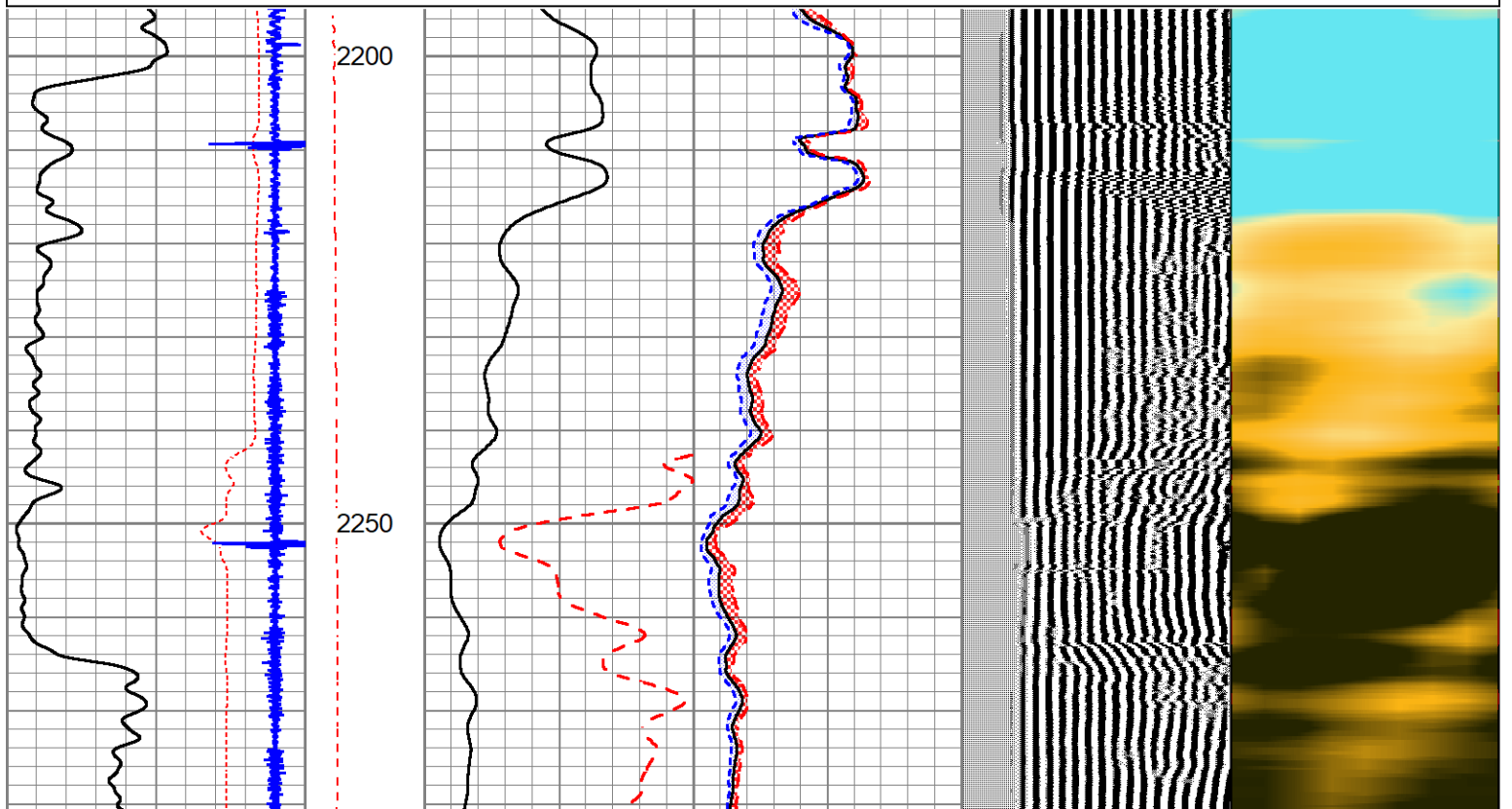
3' Travel Time		Line Tension	3' Amplitude (mV)		Sector Amplitude Average		200	VDL (usec) 1200	1	Sector Map	8
600	(usec) 200		0	100	0	150					
-9 Collar Locator 1		0 (12000)	3' Amplified Amplitude X 5		Sector Amplitude Maximum						
0	Gamma Ray 150		0	20	0	150					
		0 (12000)			Sector Amplitude Minimum						
			0		0	150					

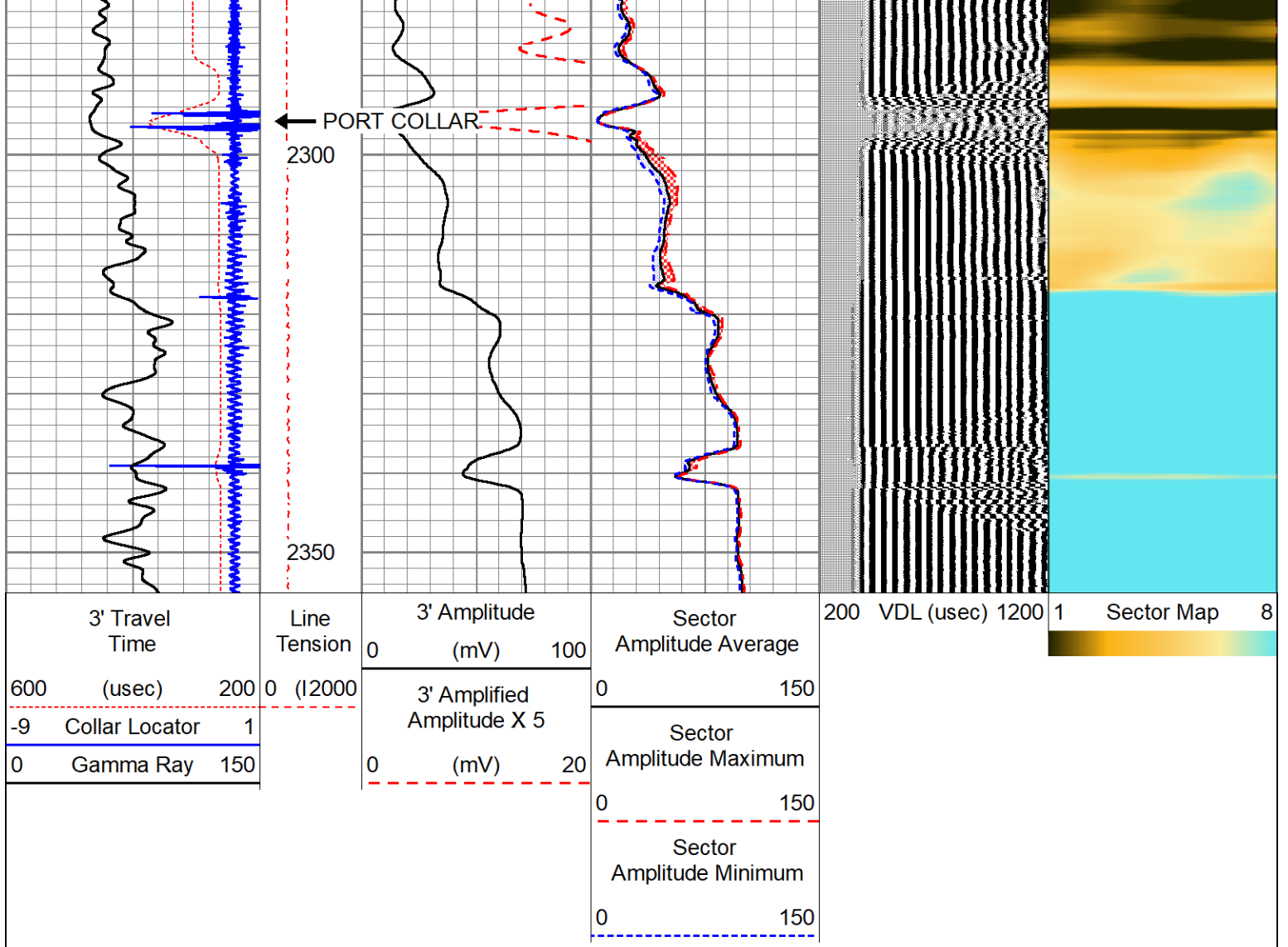


### Anhydrite Section

Database File shakespeare\_ottley #4-10.db  
 Dataset Pathname SCBL/pass5.0  
 Presentation Format PINR\_S~1  
 Dataset Creation Tue Jun 13 12:33:16 2023  
 Charted by Depth in Feet scaled 1:240

3' Travel Time		Line Tension	3' Amplitude (mV)		Sector Amplitude Average		200	VDL (usec) 1200	1	Sector Map	8
600	(usec) 200		0	100	0	150					
-9 Collar Locator 1		0 (12000)	3' Amplified Amplitude X 5		Sector Amplitude Maximum						
0	Gamma Ray 150		0	20	0	150					
		0 (12000)			Sector Amplitude Minimum						
			0		0	150					

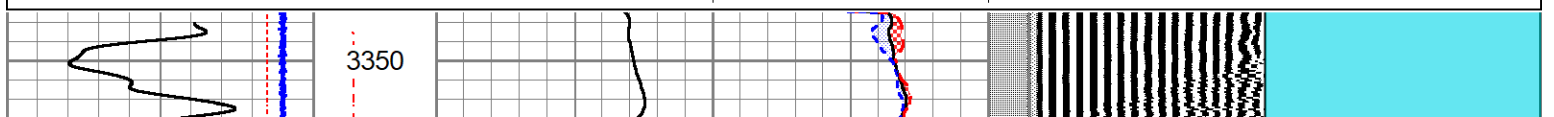
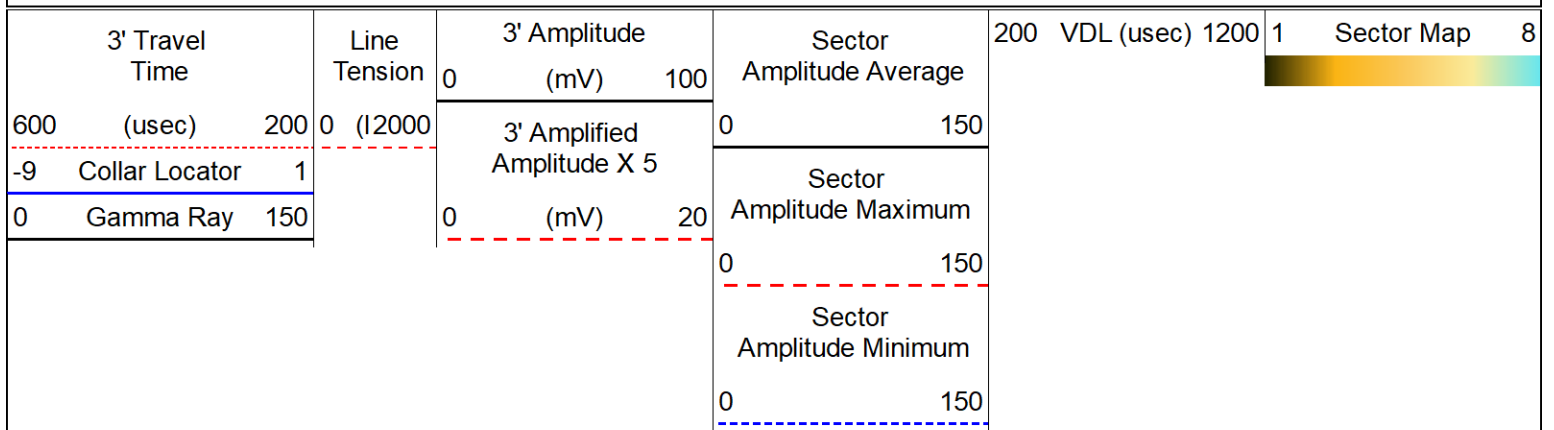


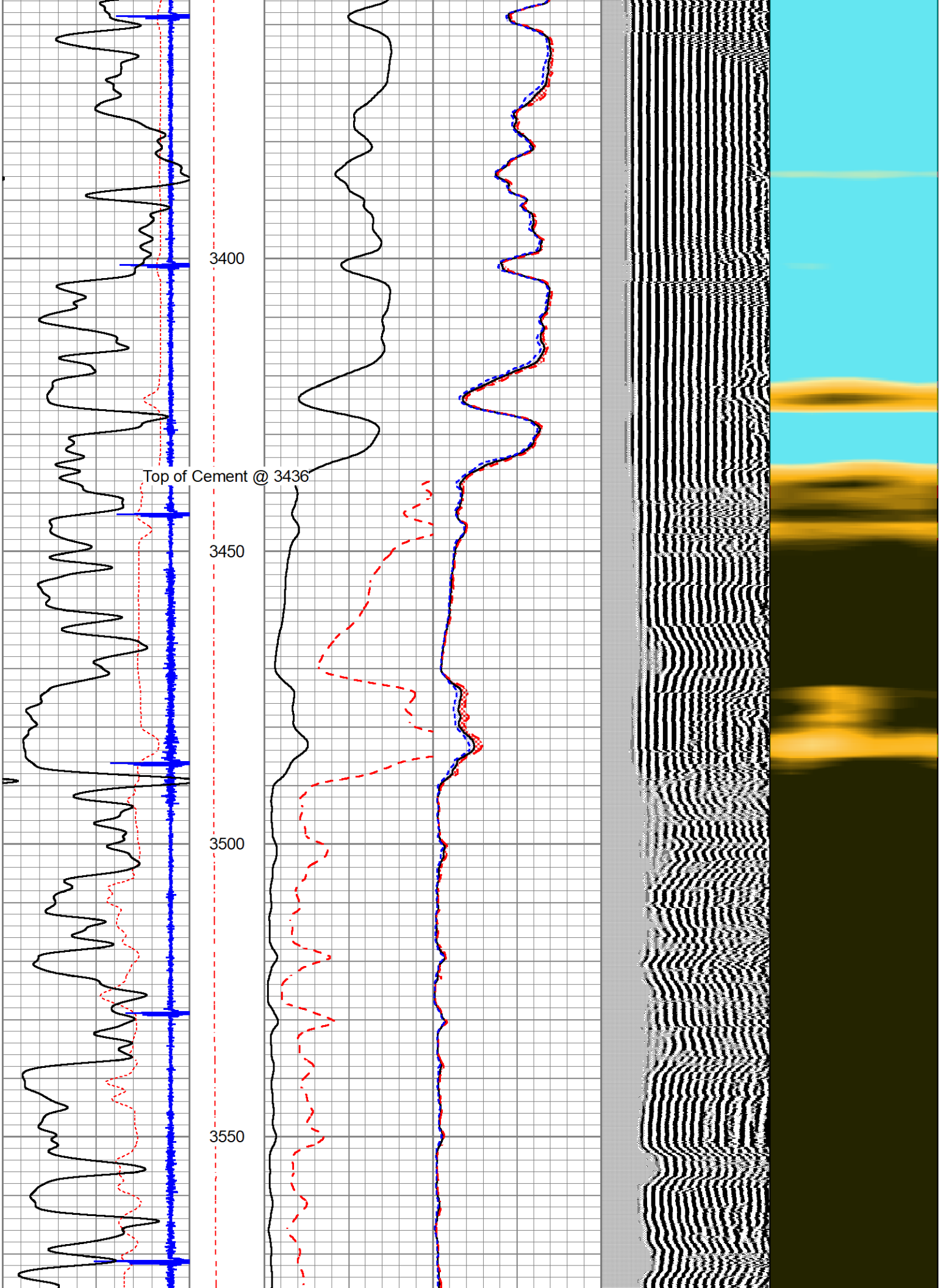


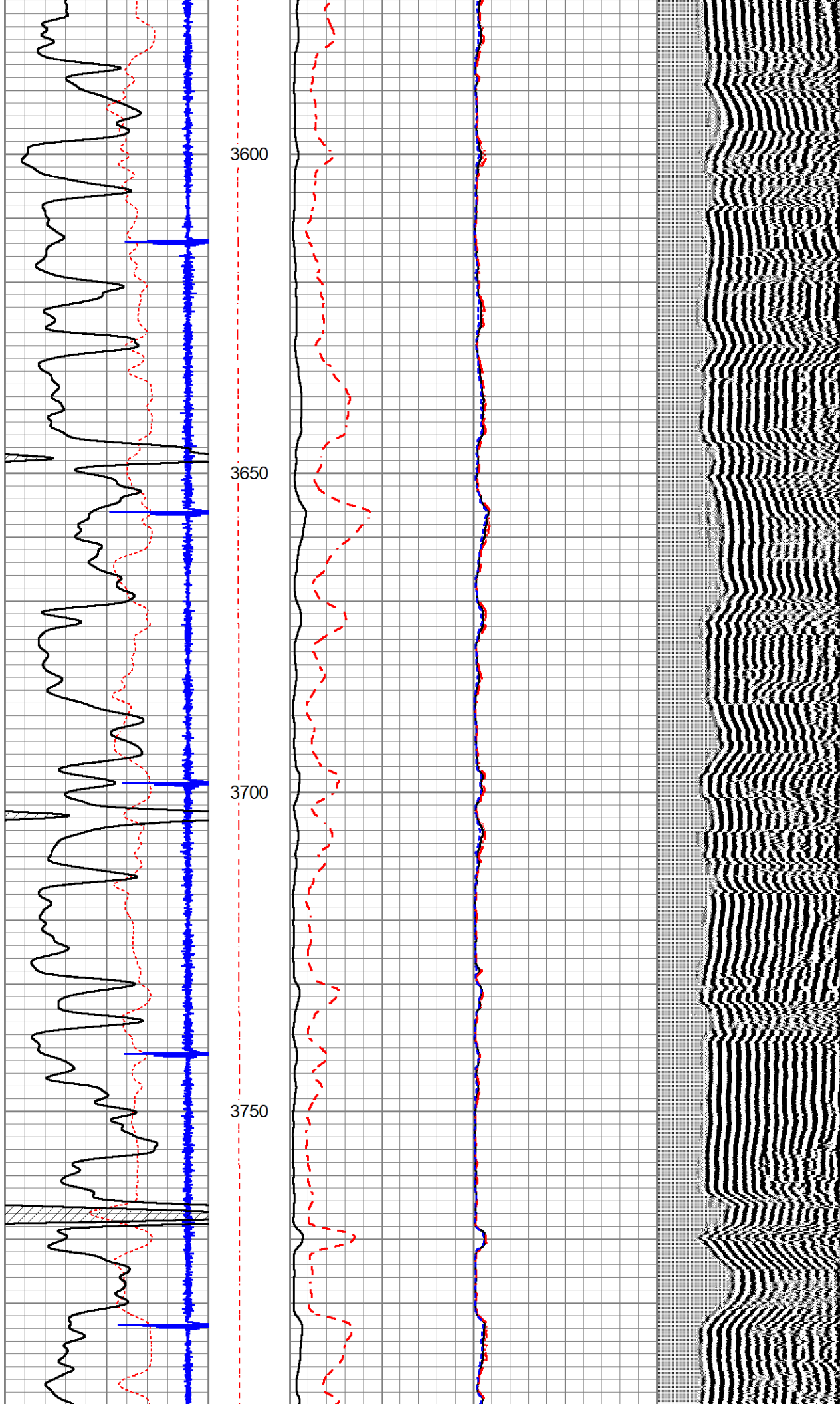
# MAIN LOG

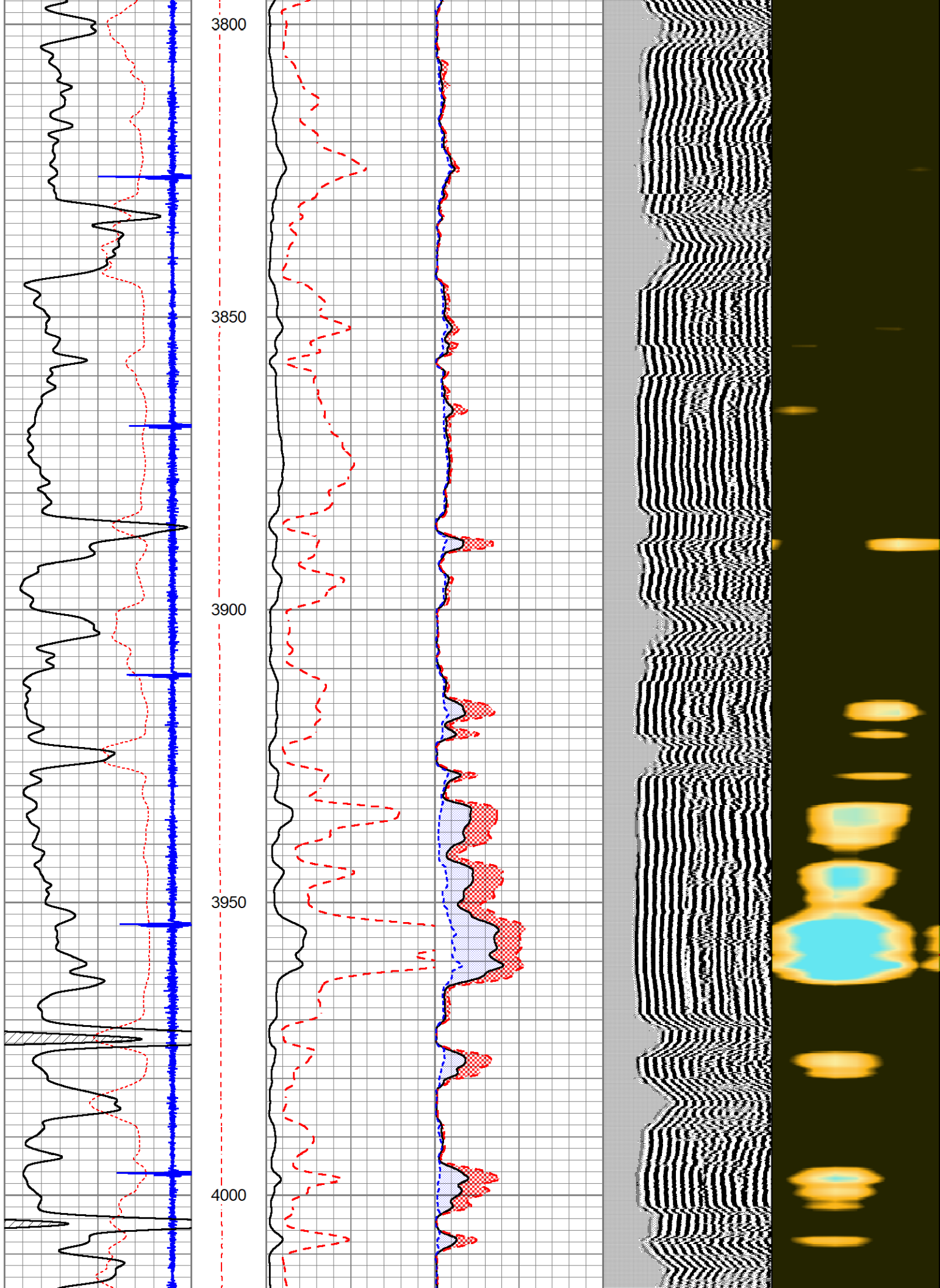
ZERO PSI APPLIED AT SURFACE

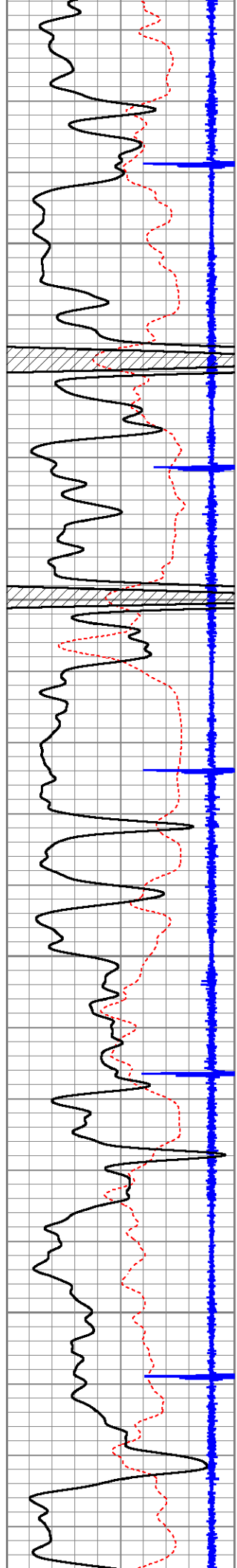
Database File: shakespeare\_ottley #4-10.db  
 Dataset Pathname: SCBL/pass4.0  
 Presentation Format: PINR\_S~1  
 Dataset Creation: Tue Jun 13 12:23:57 2023  
 Charted by: Depth in Feet scaled 1:240









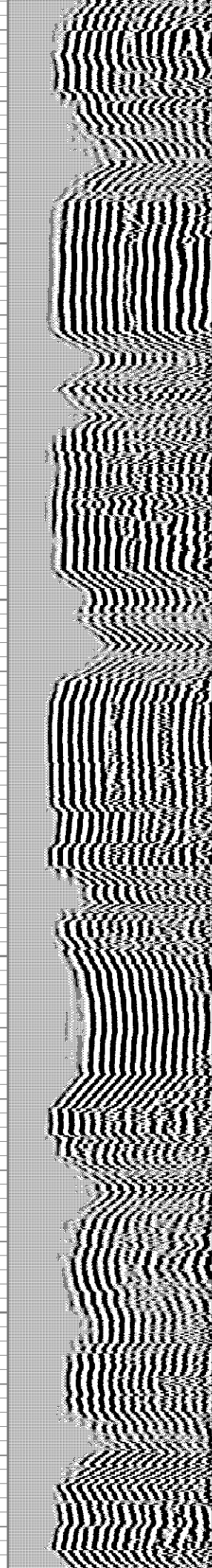
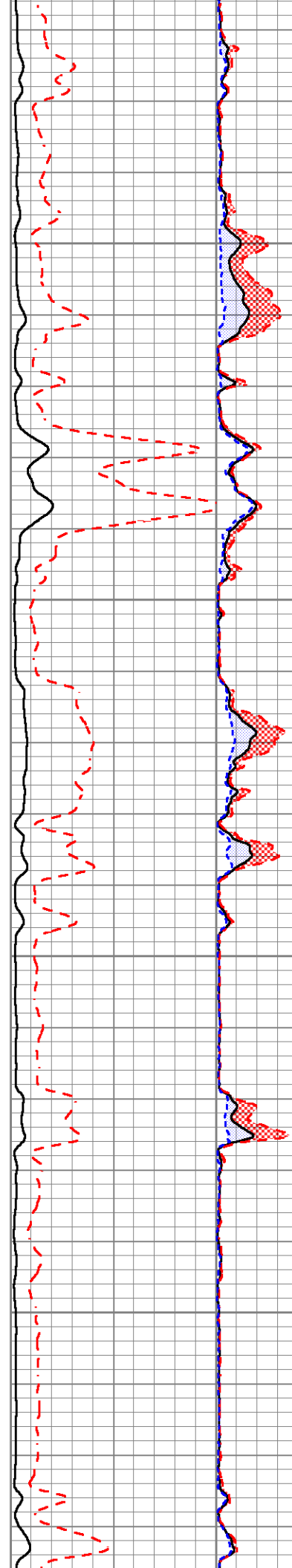


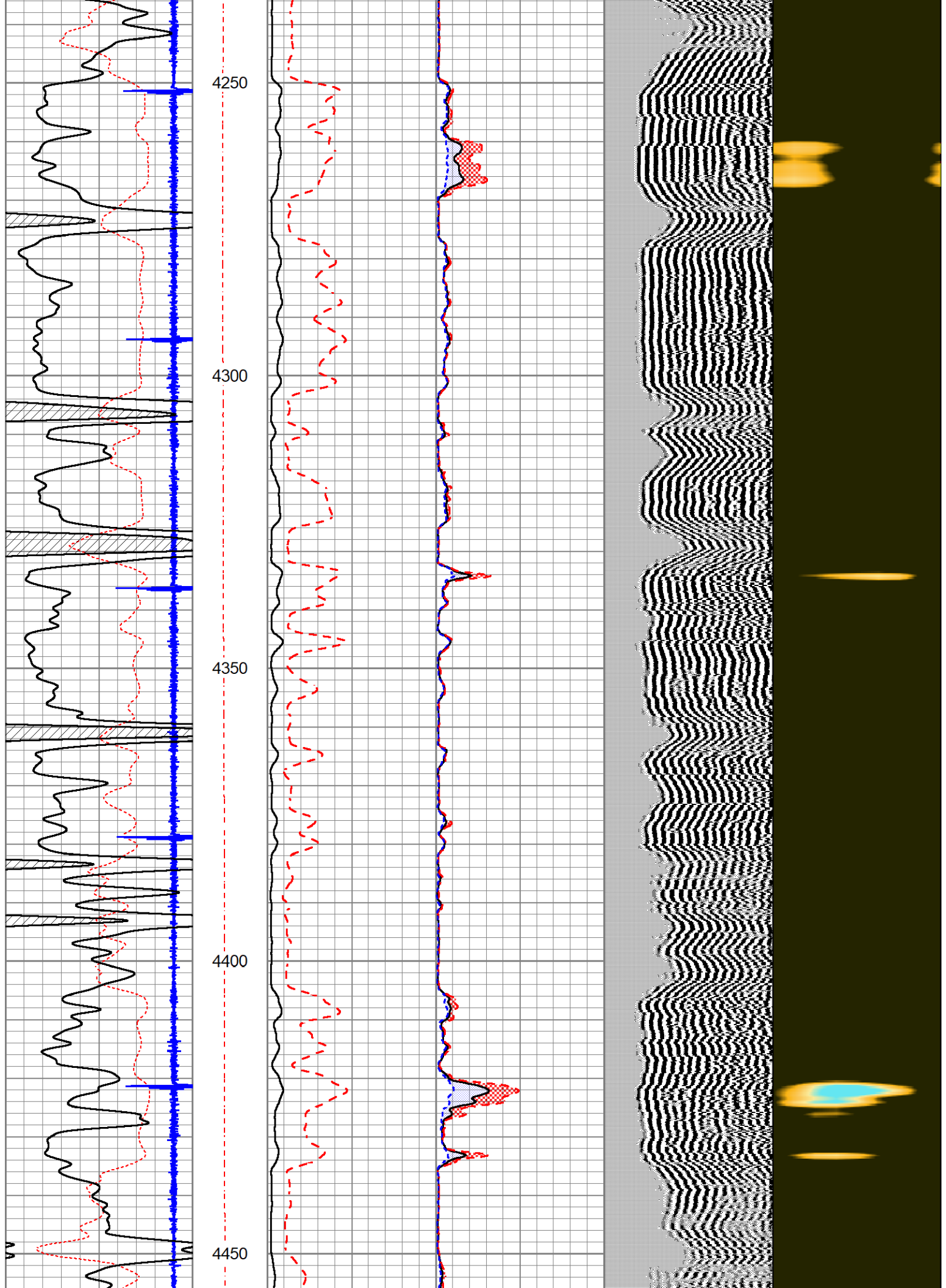
4050

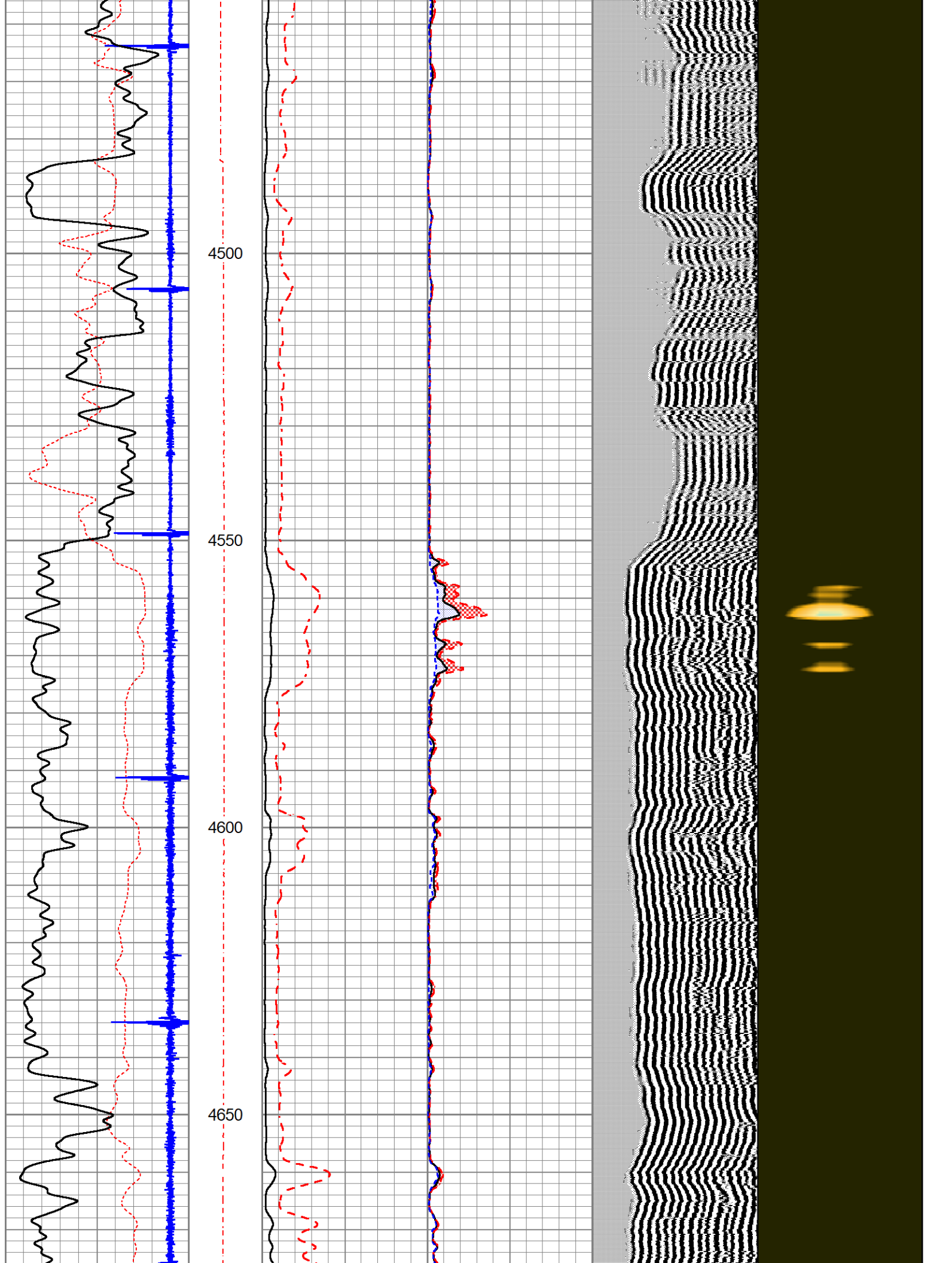
4100

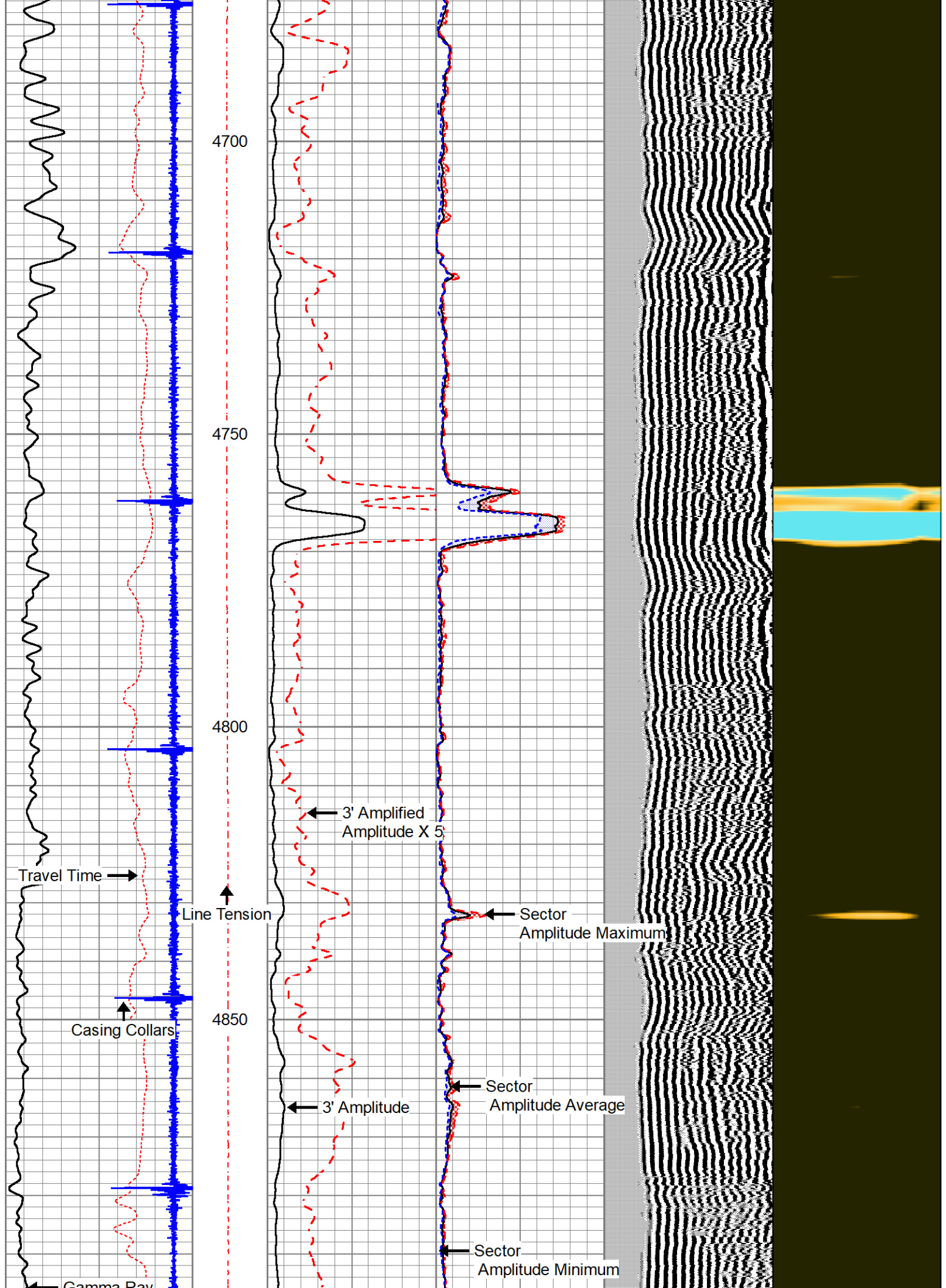
4150

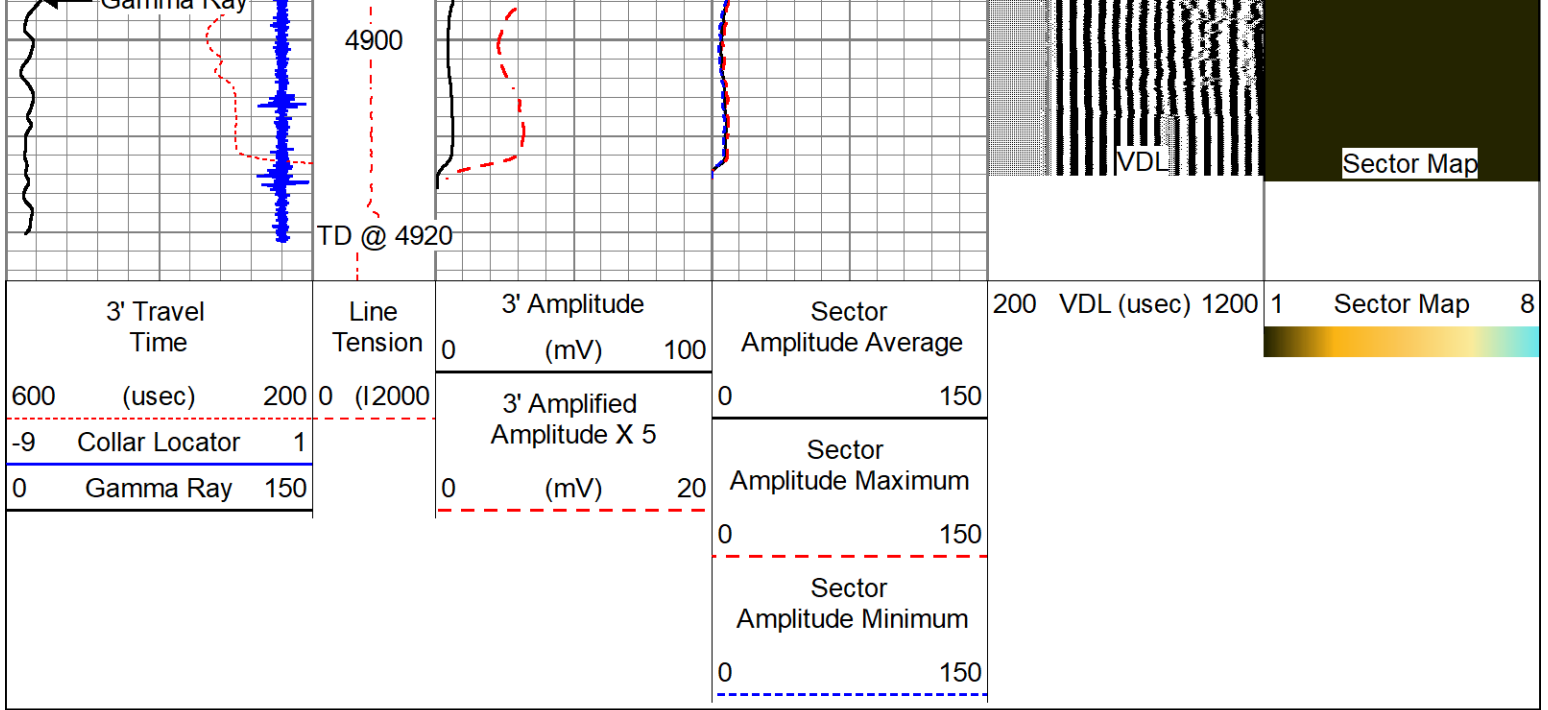
4200







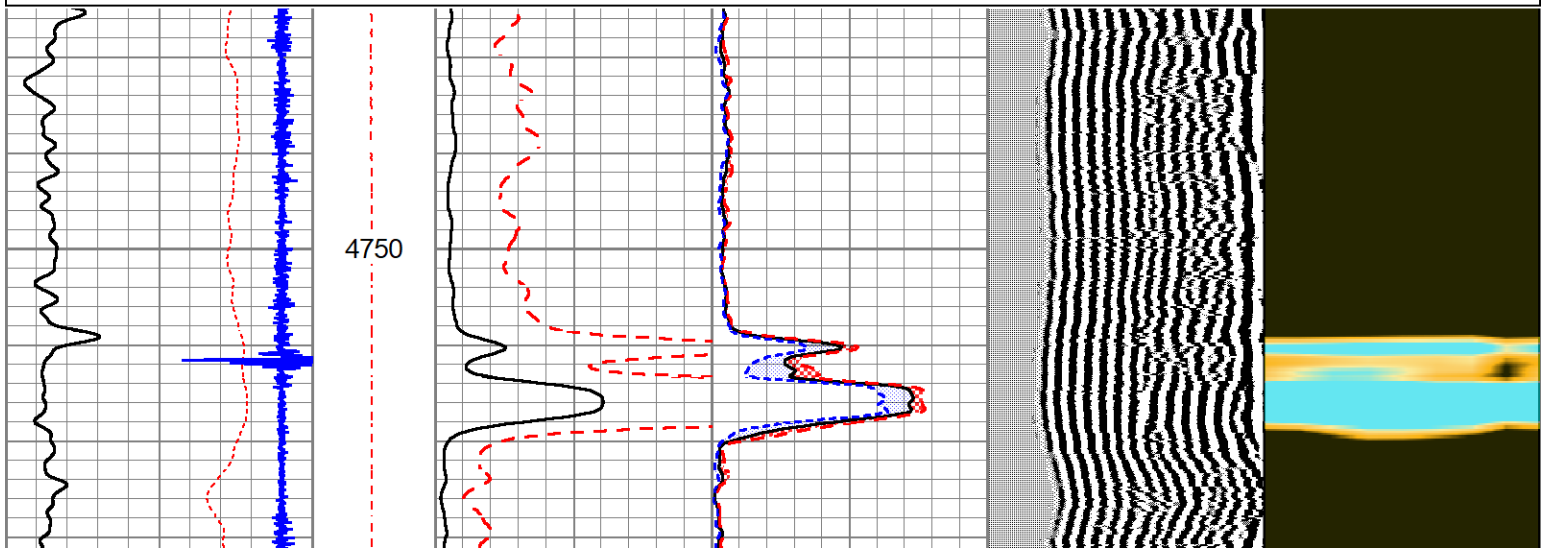
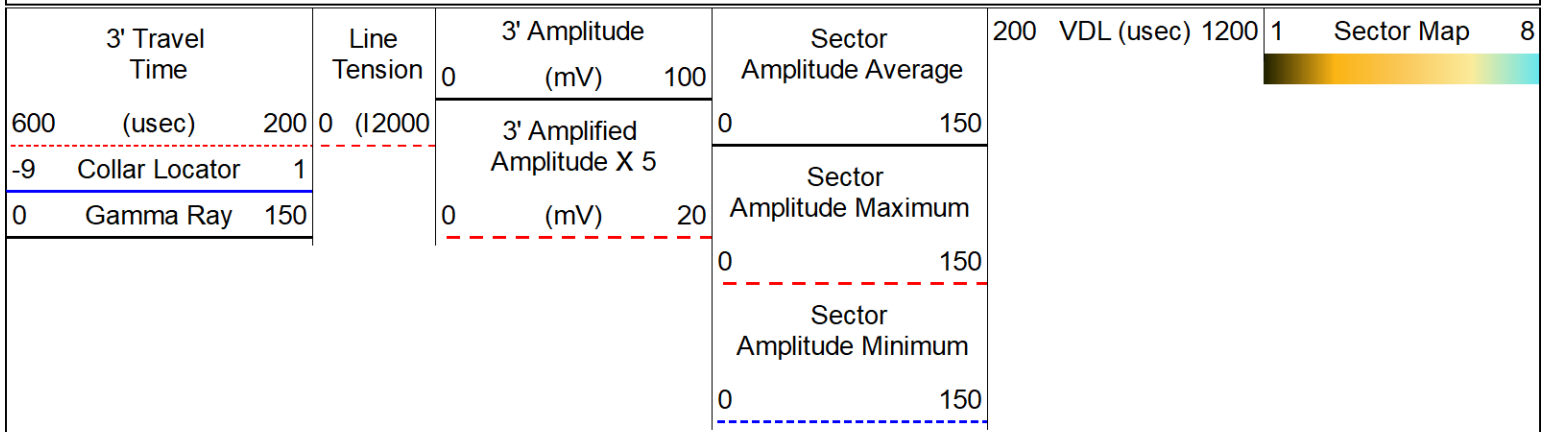


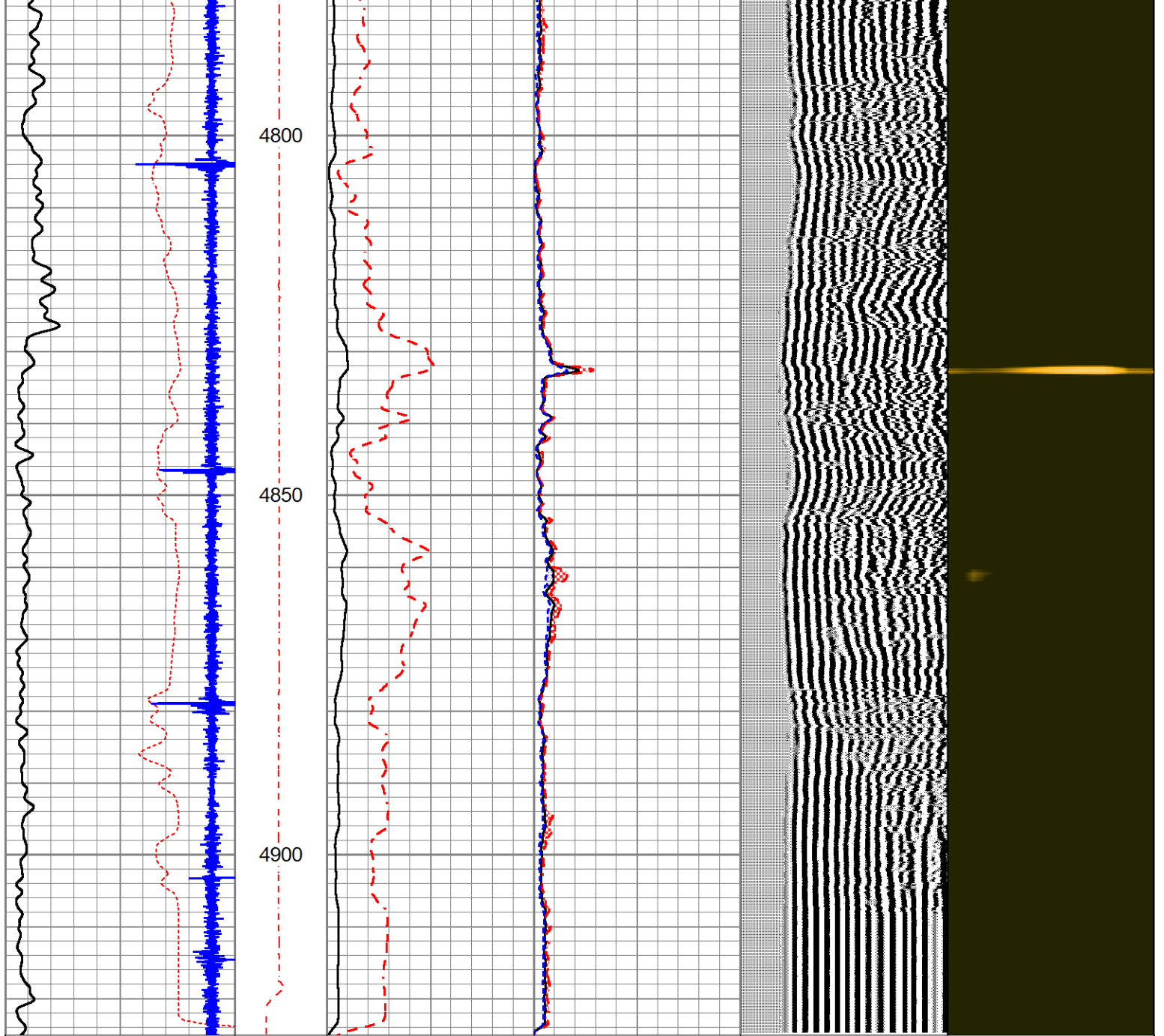


## REPEAT SECTION

ZERO PSI APPLIED AT SURFACE

Database File shakespeare\_ottley #4-10.db  
 Dataset Pathname SCBL/pass3  
 Presentation Format PINR\_S~1  
 Dataset Creation Tue Jun 13 11:27:23 2023  
 Charted by Depth in Feet scaled 1:240





3' Travel Time		Line Tension	3' Amplitude		Sector Amplitude Average		200 VDL (usec) 1200	1 Sector Map 8
600 (usec)	200		0 (mV)	100	0	150		
-9 Collar Locator 1		0 (12000)	3' Amplified Amplitude X 5		Sector Amplitude Maximum		0	150
0 Gamma Ray 150			0 (mV)	20	0	150		
					Sector Amplitude Minimum		0	150

Calibration Report

Database File shakespeare\_ottley #4-10.db  
 Dataset Pathname SCBL/pass4  
 Dataset Creation Tue Jun 13 11:36:58 2023

Gamma Ray Calibration Report

Serial Number: 060802

Serial Number: 000002  
 Tool Model: 2 3/4" Probe  
 Performed: Thu Mar 2 09:39:30 2023

Calibrator Value: 1.0  
 Background Reading: 0.0 cps  
 Calibrator Reading: 1.0 cps  
 Sensitivity: 0.8000 /cps

Segmented Cement Bond Log Calibration Report

Serial Number: PR-012  
 Tool Model: RBL-D  
 Calibration Casing Diameter: 5.500 in  
 Calibration Depth: 2400.558 ft

Master Calibration, performed Tue Jun 13 11:14:09 2023:

	Raw (v)		Calibrated (mv)		Results	
	Zero	Cal	Zero	Cal	Gain	Offset
3'	-0.004	2.217	0.700	71.921	32.075	0.816
CAL	-0.006	2.022				
5'	-0.004	2.152	0.700	71.921	33.040	0.827
SUM						
S1	-0.001	2.337	0.000	100.000	42.770	0.033
S2	0.000	2.231	0.000	100.000	44.830	-0.010
S3	-0.000	2.112	0.000	100.000	47.333	0.021
S4	-0.001	2.146	0.000	100.000	46.583	0.049
S5	-0.002	2.121	0.000	100.000	47.115	0.077
S6	-0.002	2.031	0.000	100.000	49.177	0.112
S7	-0.002	2.148	0.000	100.000	46.505	0.114
S8	-0.003	2.328	0.000	100.000	42.900	0.130

Air Zero Calibration, performed Thu Mar 2 09:31:27 2023:

	Raw (v)		Calibrated (v)		Results	
	Zero		Zero		Offset	
3'	0.000		0.000			0.000
5'	0.000		0.000			0.000
SUM						
S1	0.000		0.000			0.000
S2	0.000		0.000			0.000
S3	0.000		0.000			0.000
S4	0.000		0.000			0.000
S5	0.000		0.000			0.000
S6	0.000		0.000			0.000
S7	0.000		0.000			0.000
S8	0.000		0.000			0.000



Company Shakespeare Oil Company, Inc  
 Well Ottley #4-10  
 Field Chalk Buttes  
 County Logan  
 State Kansas