

SONIC
LOG



Company SHAKESPEARE OIL COMPANY, INC.
Well OTTLEY #4-10
Field CHALK BUTTES
County LOGAN
State KANSAS

Company SHAKESPEARE OIL COMPANY, INC.
Well OTTLEY #4-10
Field CHALK BUTTES
County LOGAN State KANSAS

Location: 513' FSL & 1612' FEL
NE - SE - SW - SE
API #: 15-109-21667-0000
SEC 10 TWP 14S RGE 32W
Permanent Datum GROUND LEVEL Elevation 2768
Log Measured From KELLY BUSHING 9' A.G.L.
Drilling Measured From KELLY BUSHING

Other Services
CDL/CNL/PE
DIL/MEL
Elevation
K.B. 2777
D.F. 2775
G.L. 2768

Date	6/1/23		
Run Number	TWO		
Depth Driller	5030		
Depth Logger	5030		
Bottom Logged Interval	5022		
Top Log Interval	200		
Casing Driller	8 5/8"@264'		
Casing Logger	264		
Bit Size	7 7/8"		
Type Fluid in Hole	CHEMICAL MUD	CHLORIDES 2.500 PPM	
Density / Viscosity	9.2/63		
pH / Fluid Loss	10.0/7.2		
Source of Sample	FLOWLINE		
Rm @ Meas. Temp	1.00@80F		
Rmf @ Meas. Temp	.750@80F		
Rmc @ Meas. Temp	1.20@80F		
Source of Rmf / Rmc	MEASUREMENT		
Rm @ BHT	.640@125F		
Time Circulation Stopped	4.5 HOURS		
Time Logger on Bottom	8:30 A.M.		
Maximum Recorded Temperature	125F		
Equipment Number	922339		
Location	HAYS, KANSAS		
Recorded By	JEFF LUEBBERS		
Witnessed By	KENT MATSON		

<<< Fold Here >>>

All interpretations are opinions based on inferences from electrical or other measurements and we cannot and do not guarantee the accuracy or correctness of any interpretation, and we shall not, except in the case of gross or willful negligence on our part, be liable or responsible for any loss, costs, damages, or expenses incurred or sustained by anyone resulting from any interpretation made by any of our officers, agents or employees. These interpretations are also subject to our general terms and conditions set out in our current Price Schedule.

15-109-21667-0000

Comments

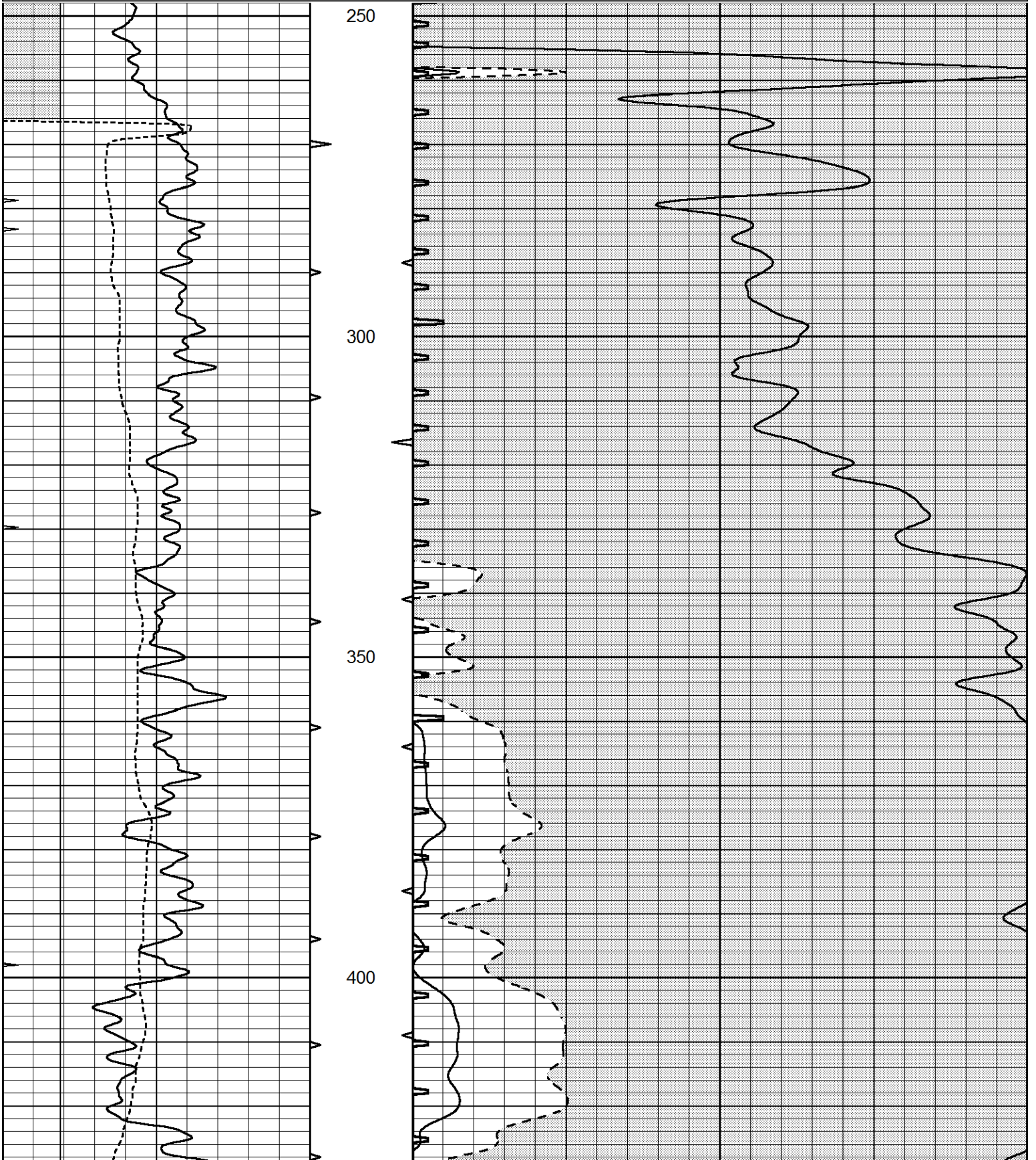
THANK YOU FOR USING ELI WIRELINE HAYS, KANSAS (785) 628-6395
DIRECTIONS
OAKLEY, KS., 19S. ON HWY 83, 1/2 W. INTO

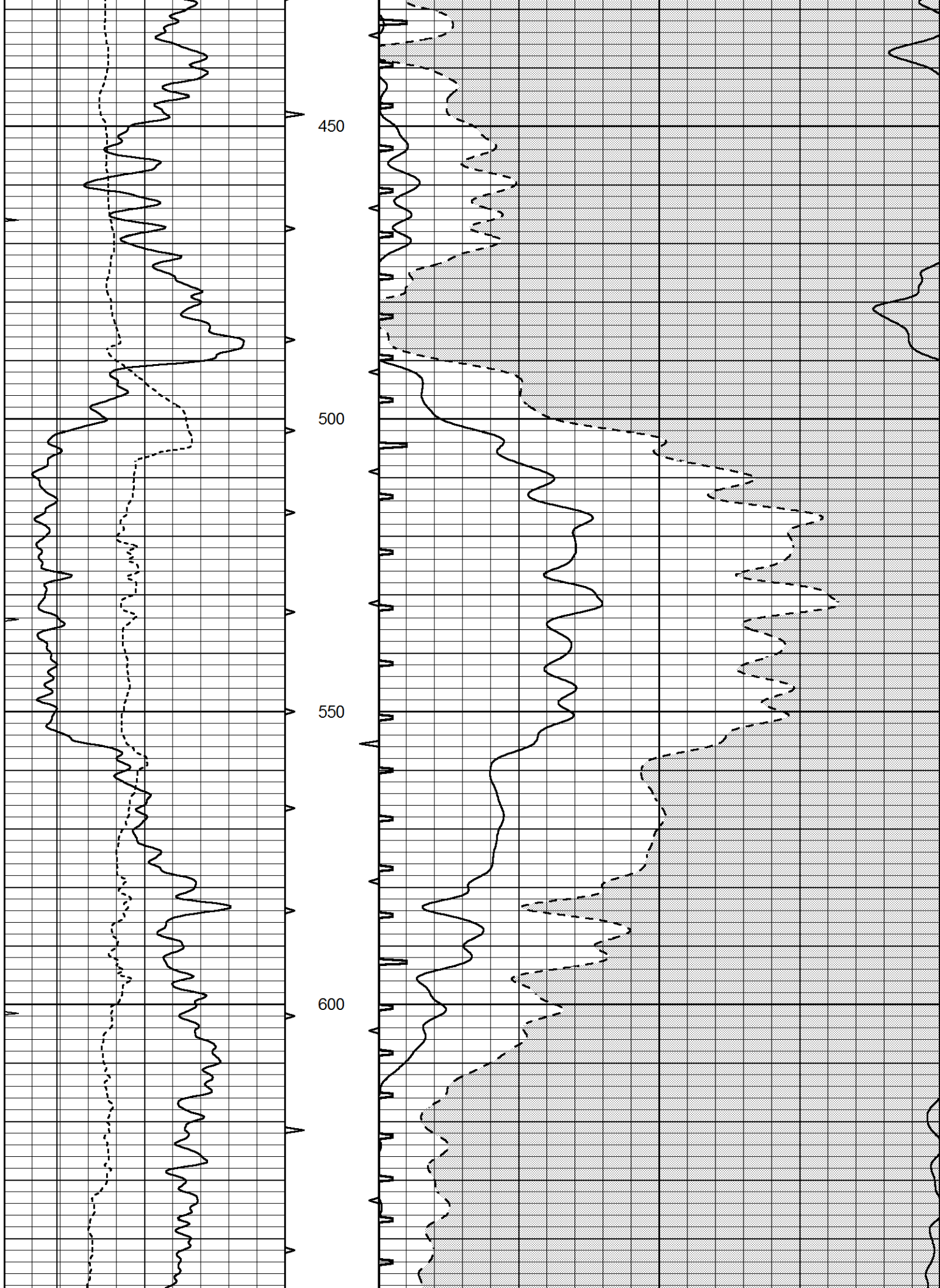


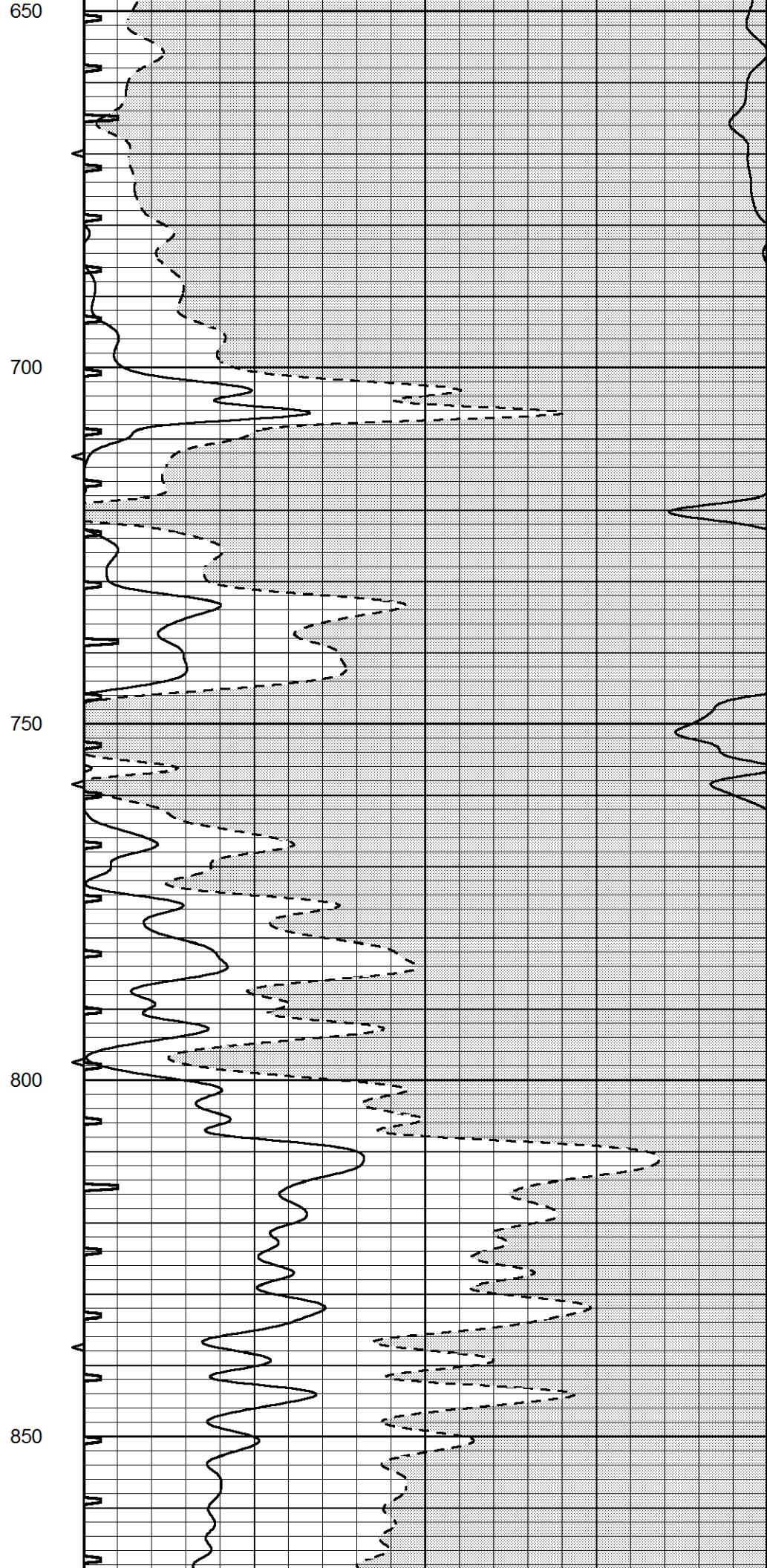
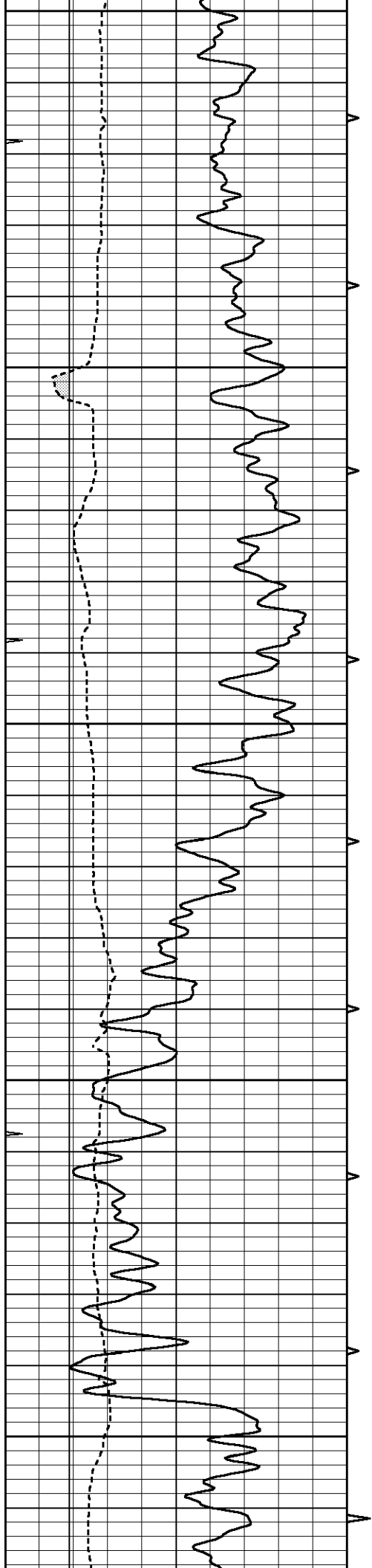
MAIN SECTION

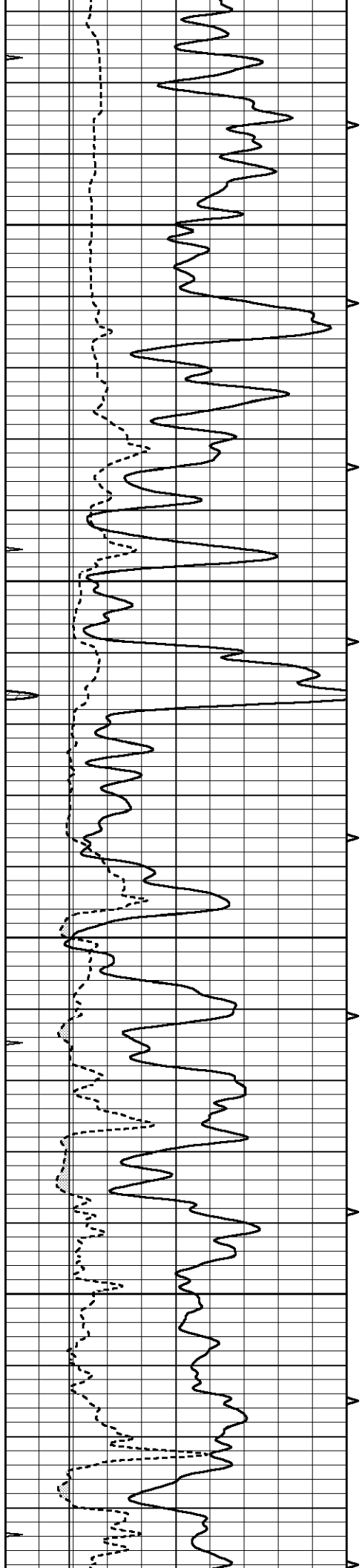
Database File 7891pe.db
 Dataset Pathname pass7.3
 Presentation Format slt
 Dataset Creation Thu Jun 01 10:56:27 2023
 Charted by Depth in Feet scaled 1:240

0	GAMMA RAY (GAPI)	150	ABHV	140	DELTA TIME (usec/ft)	40	
6	CALIPER (in)	16	10 (ft3)	0	30	SONIC POROSITY (pu)	-10
0	MINMK	20	TBHV	0	ITT (msec)	20	
			0 (ft3)	10			







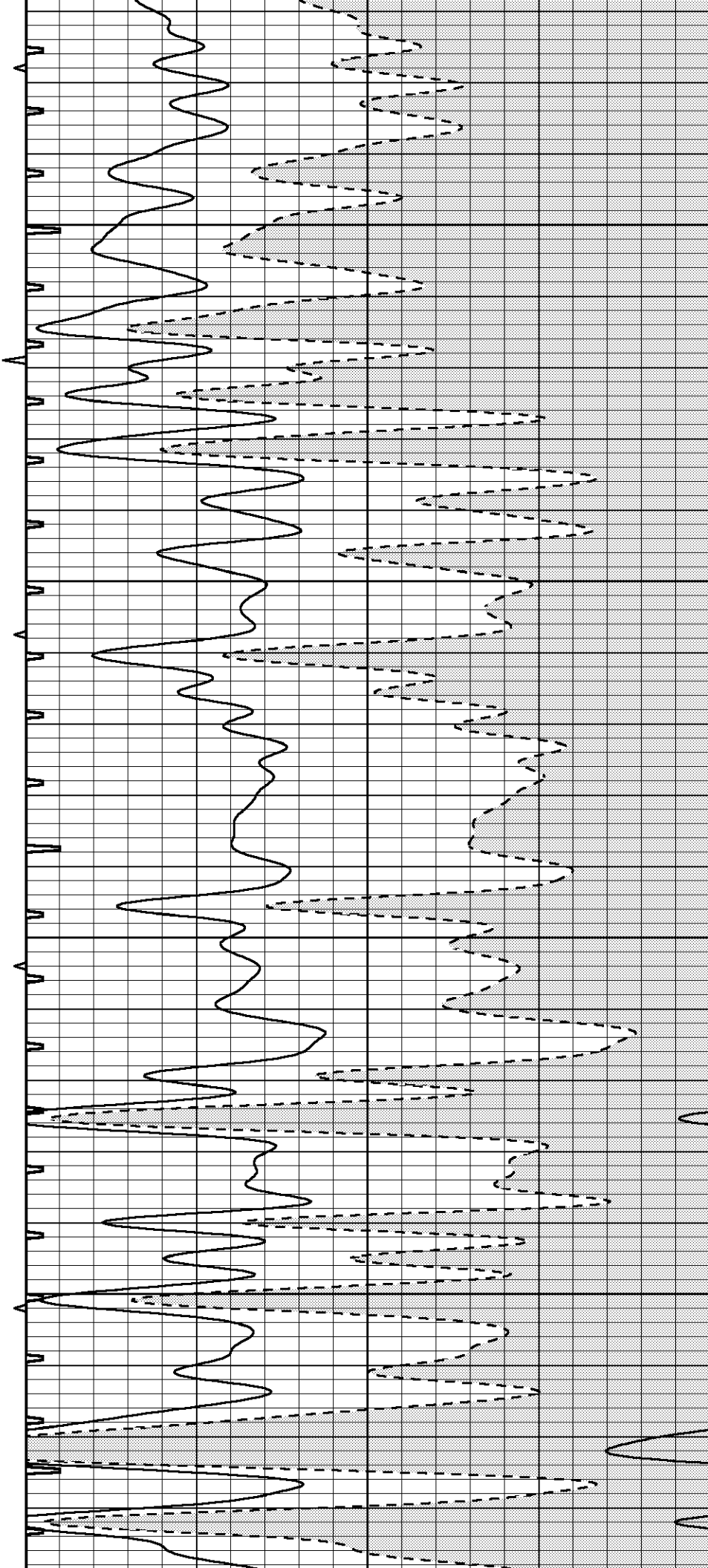


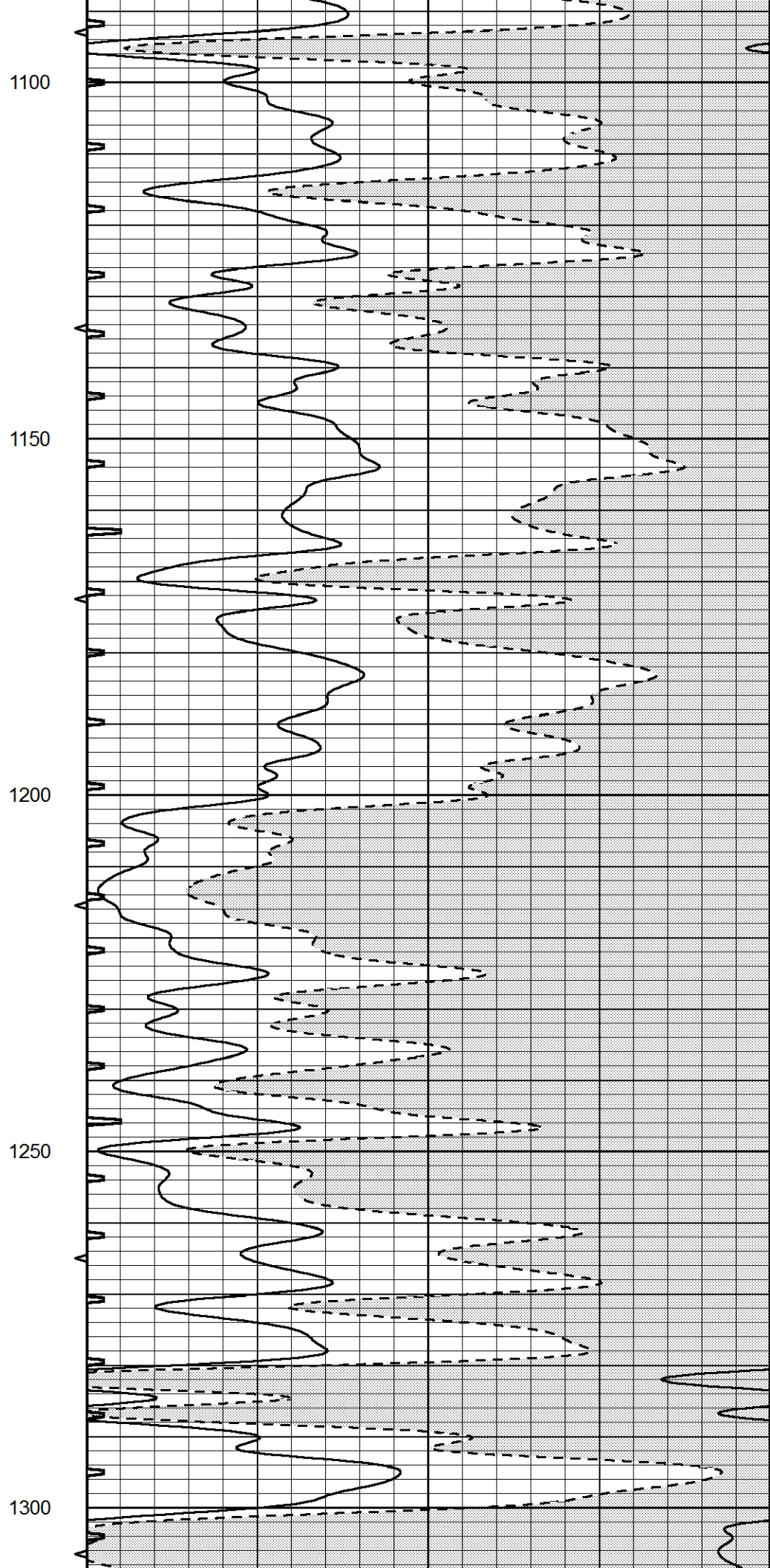
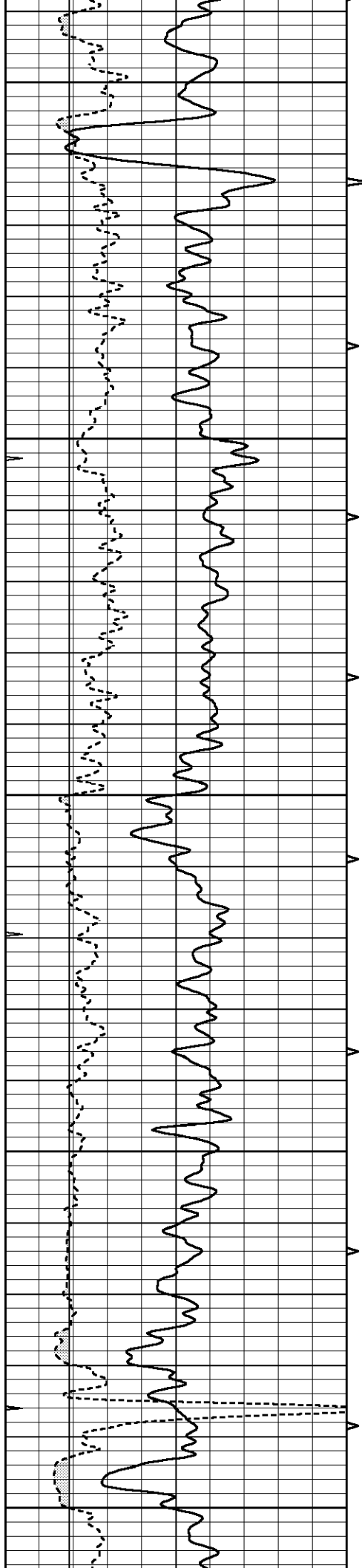
900

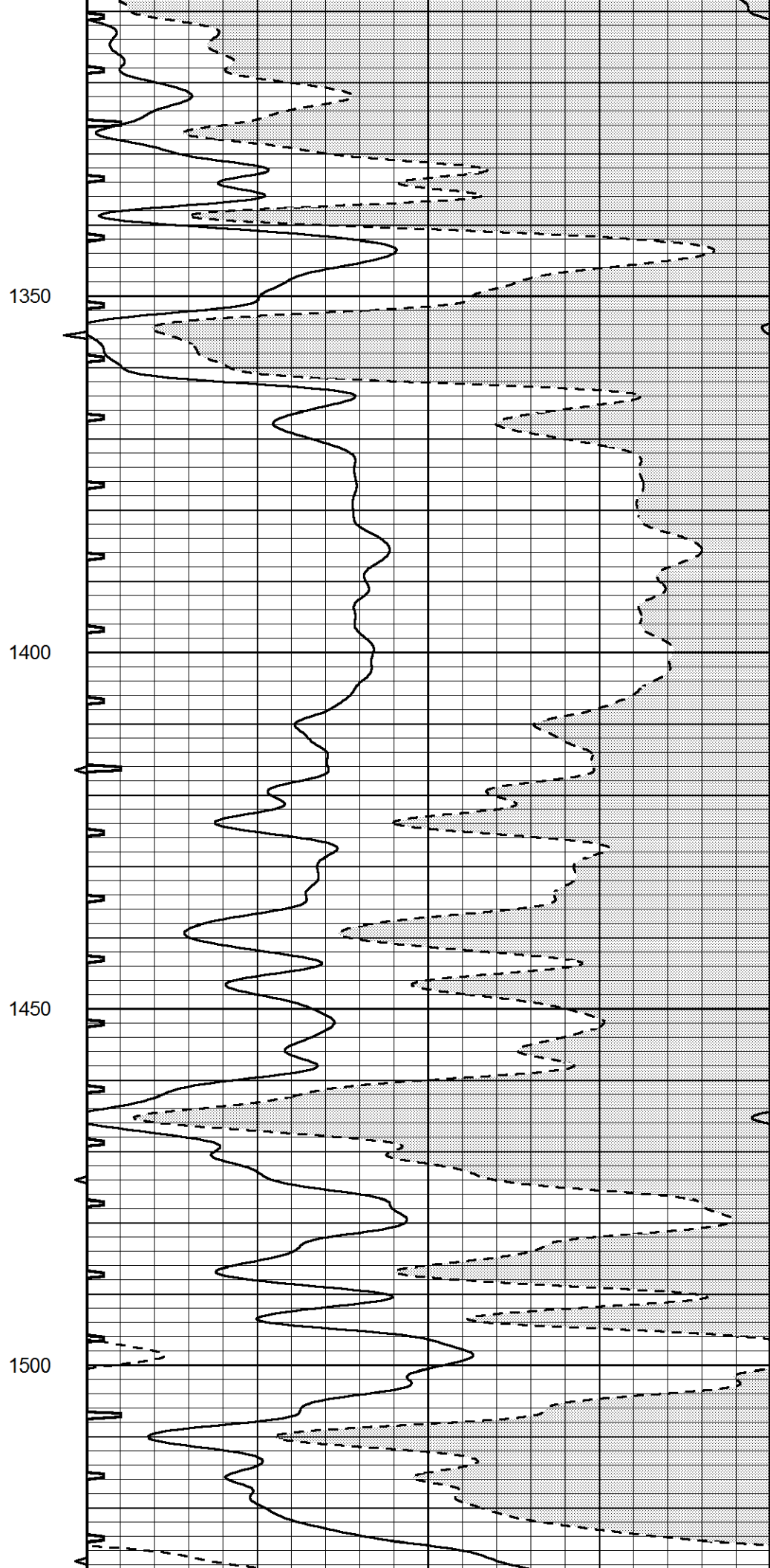
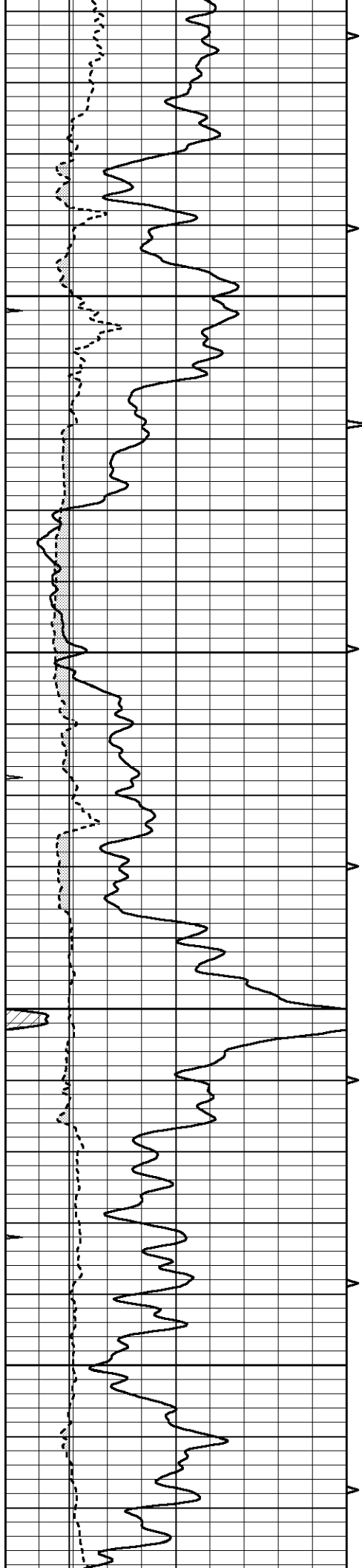
950

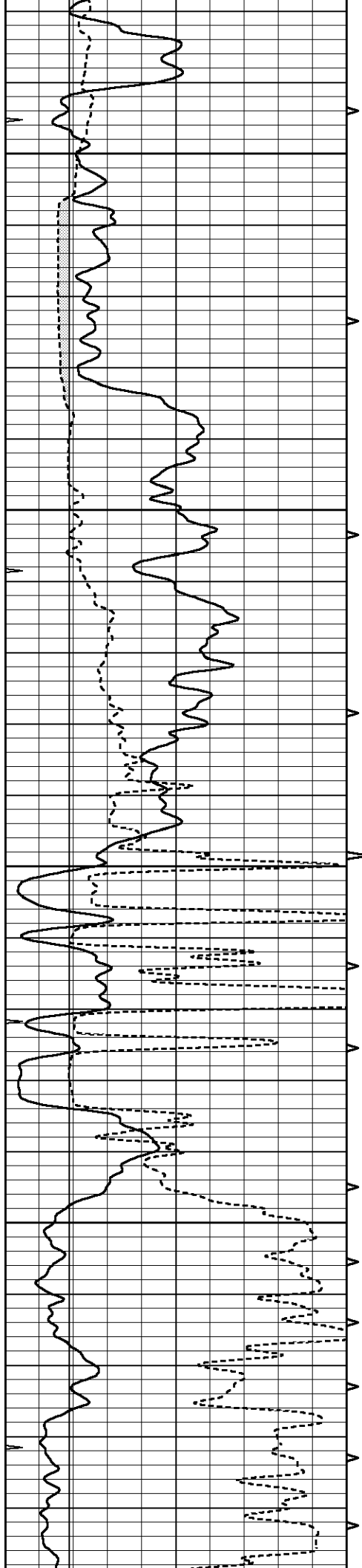
1000

1050







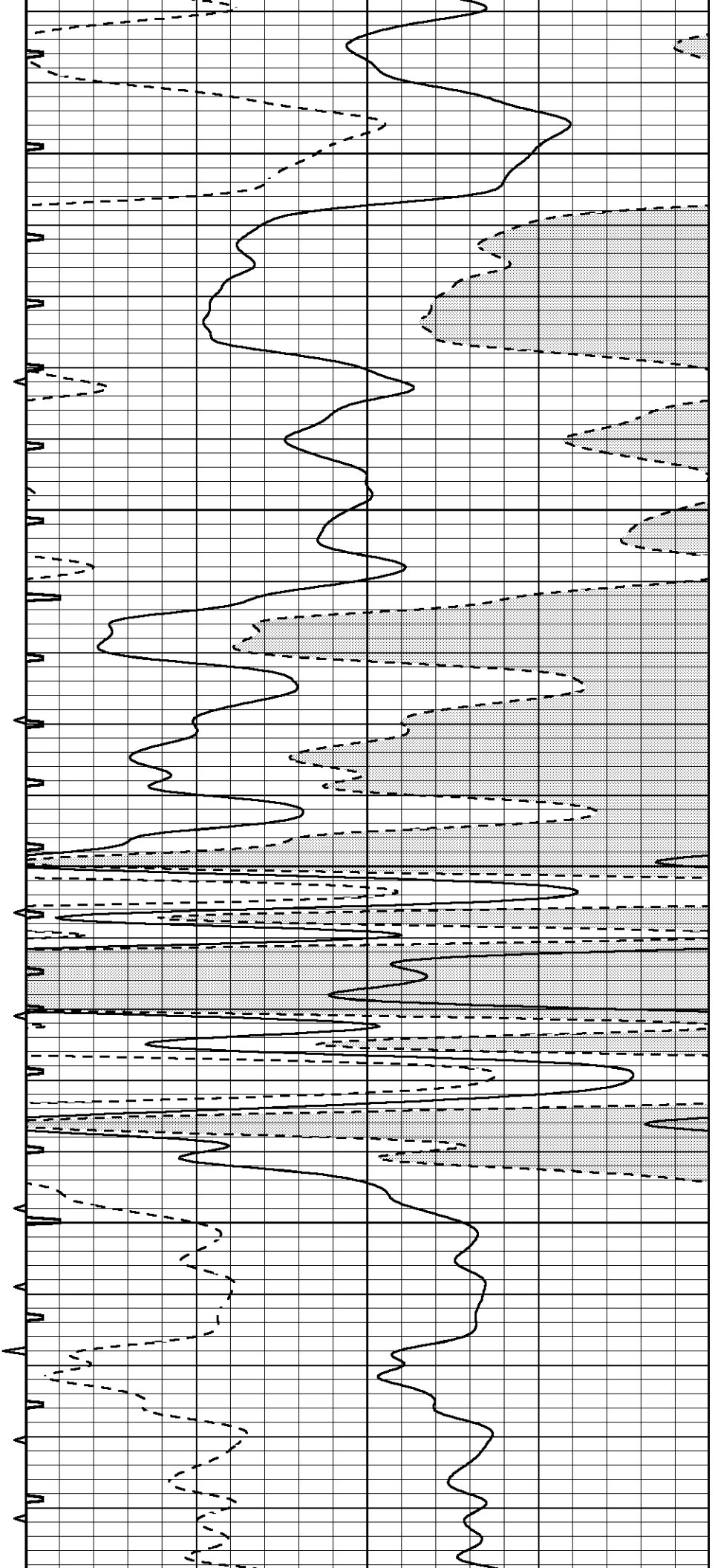


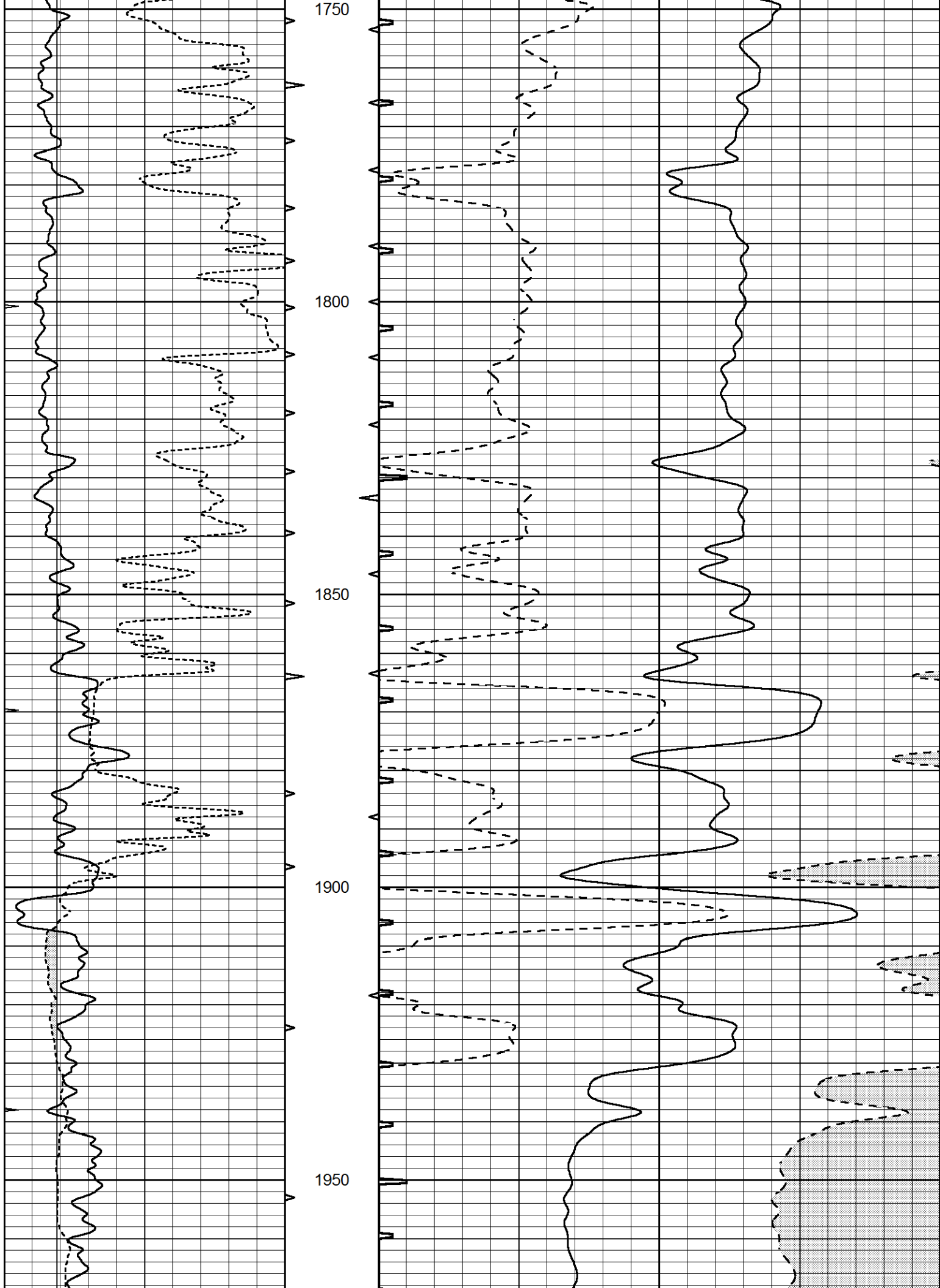
1550

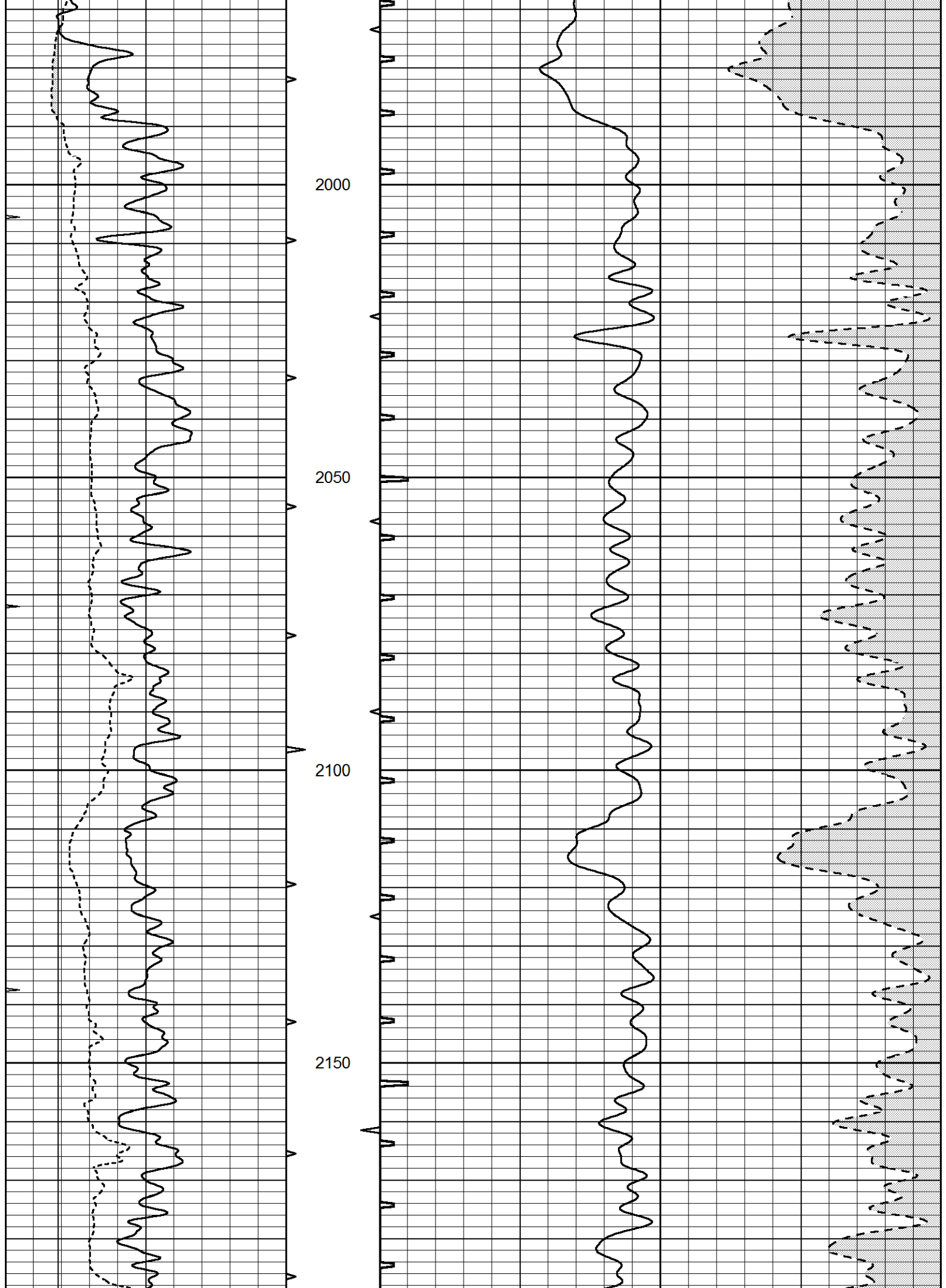
1600

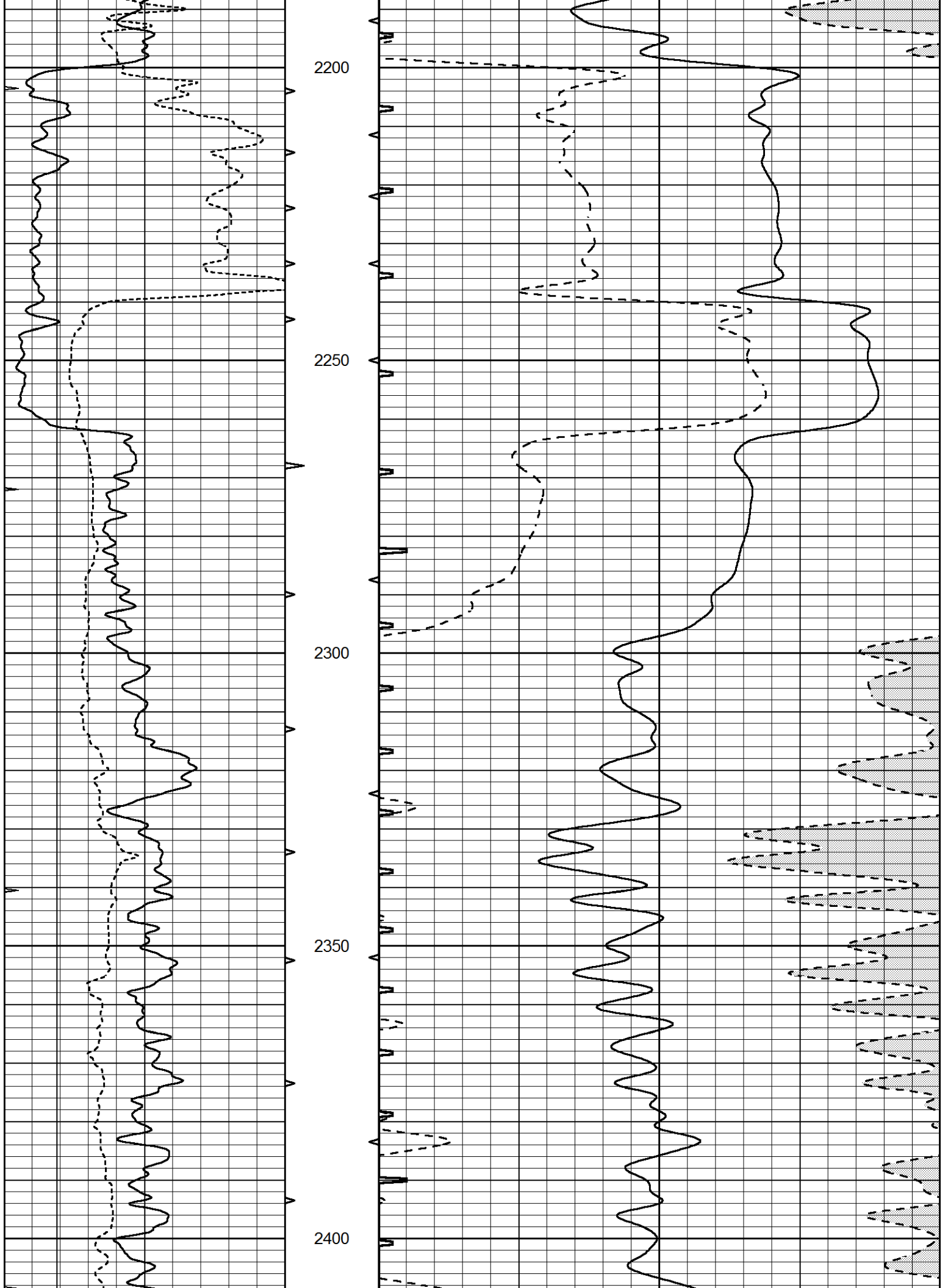
1650

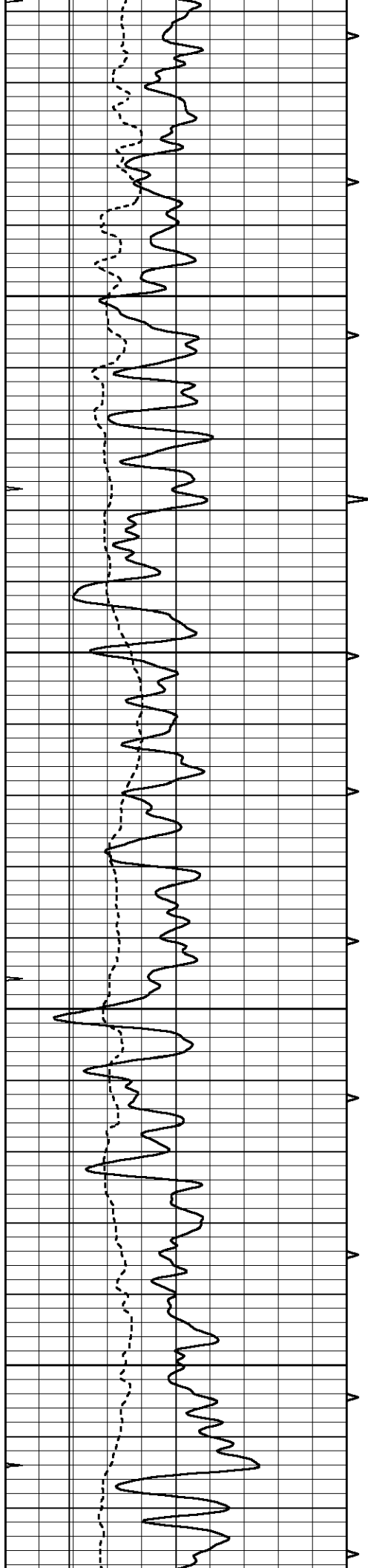
1700









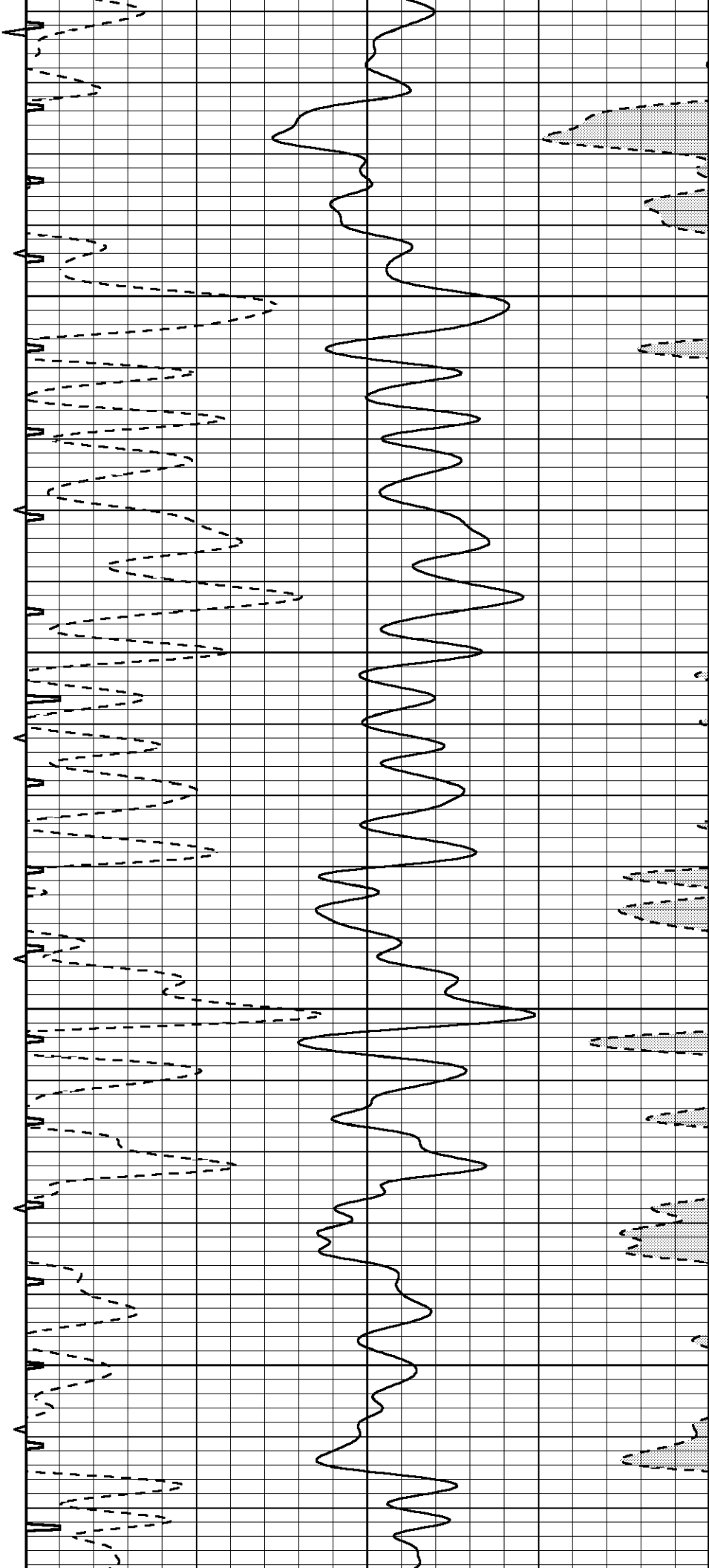


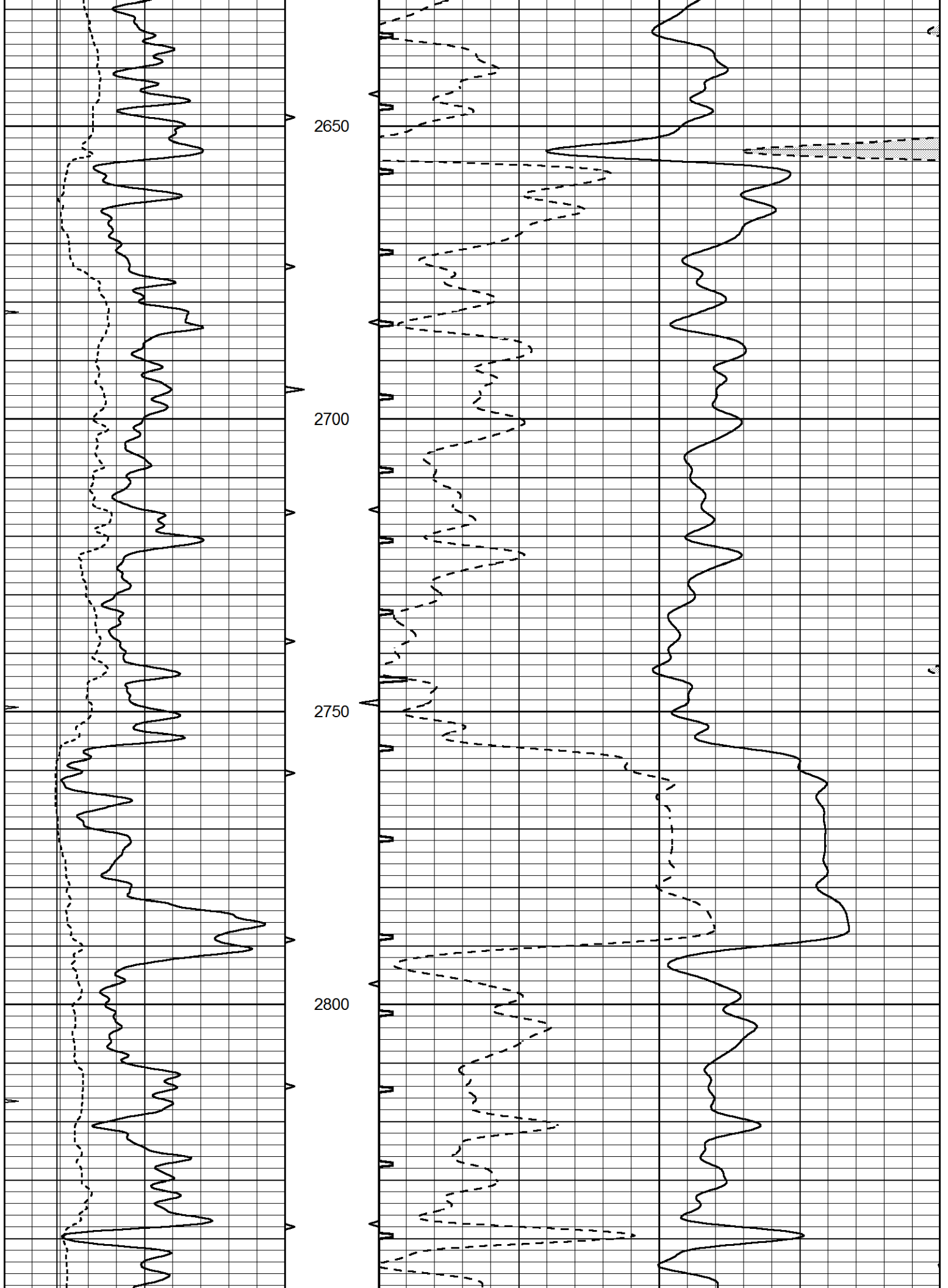
2450

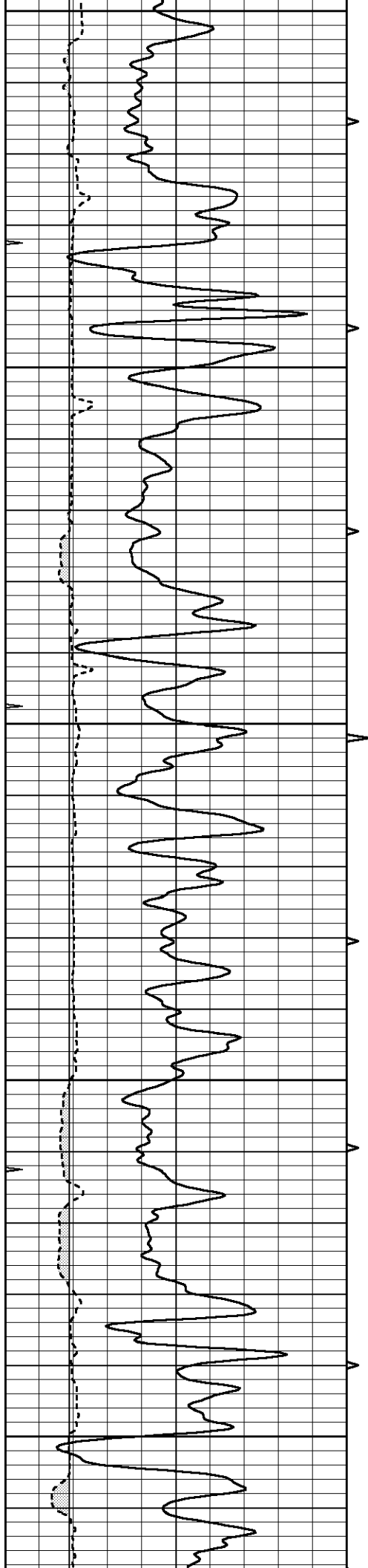
2500

2550

2600







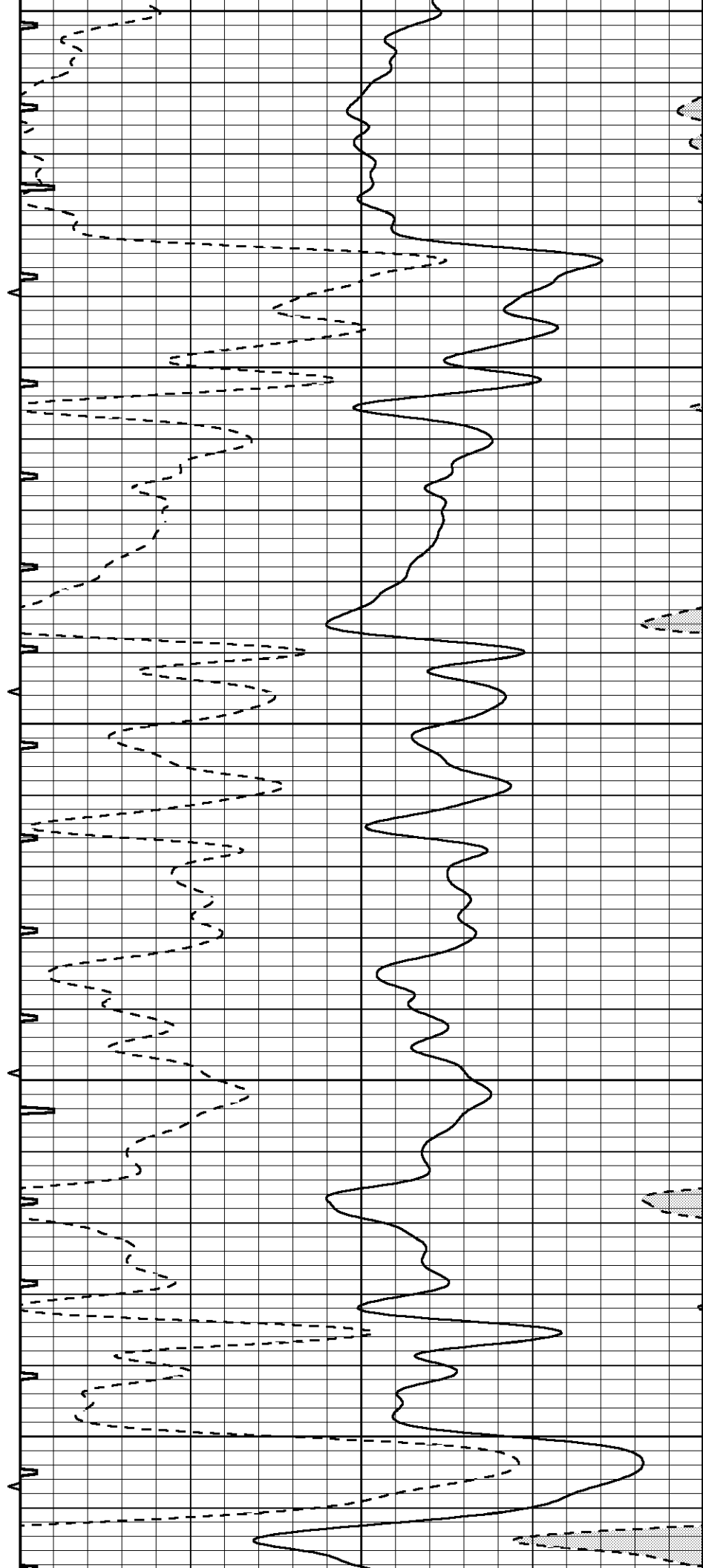
2850

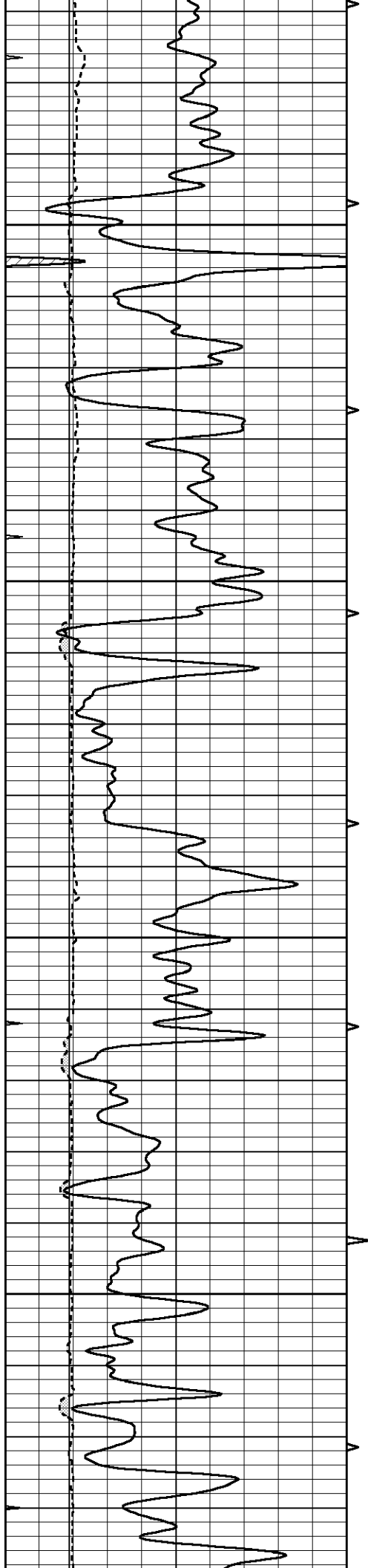
2900

2950

3000

3050



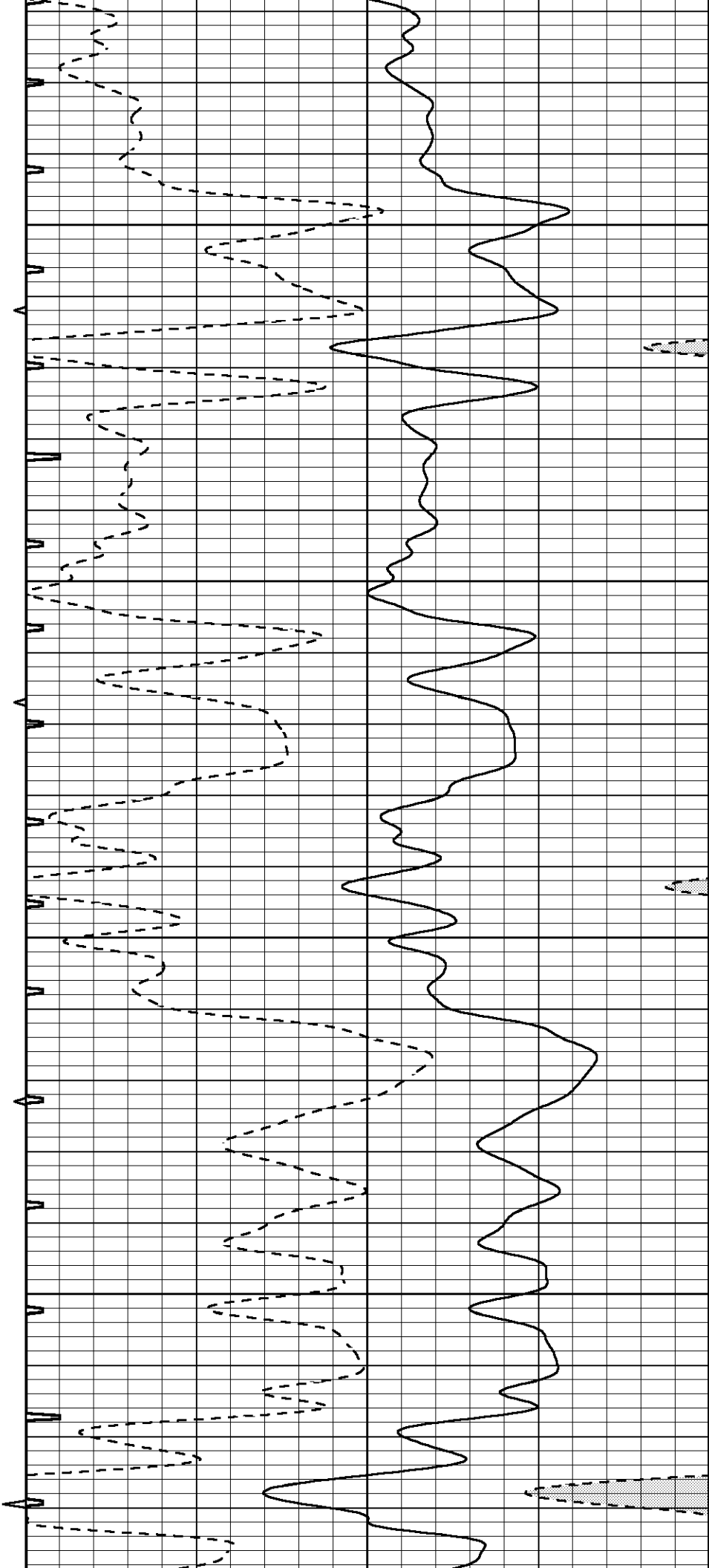


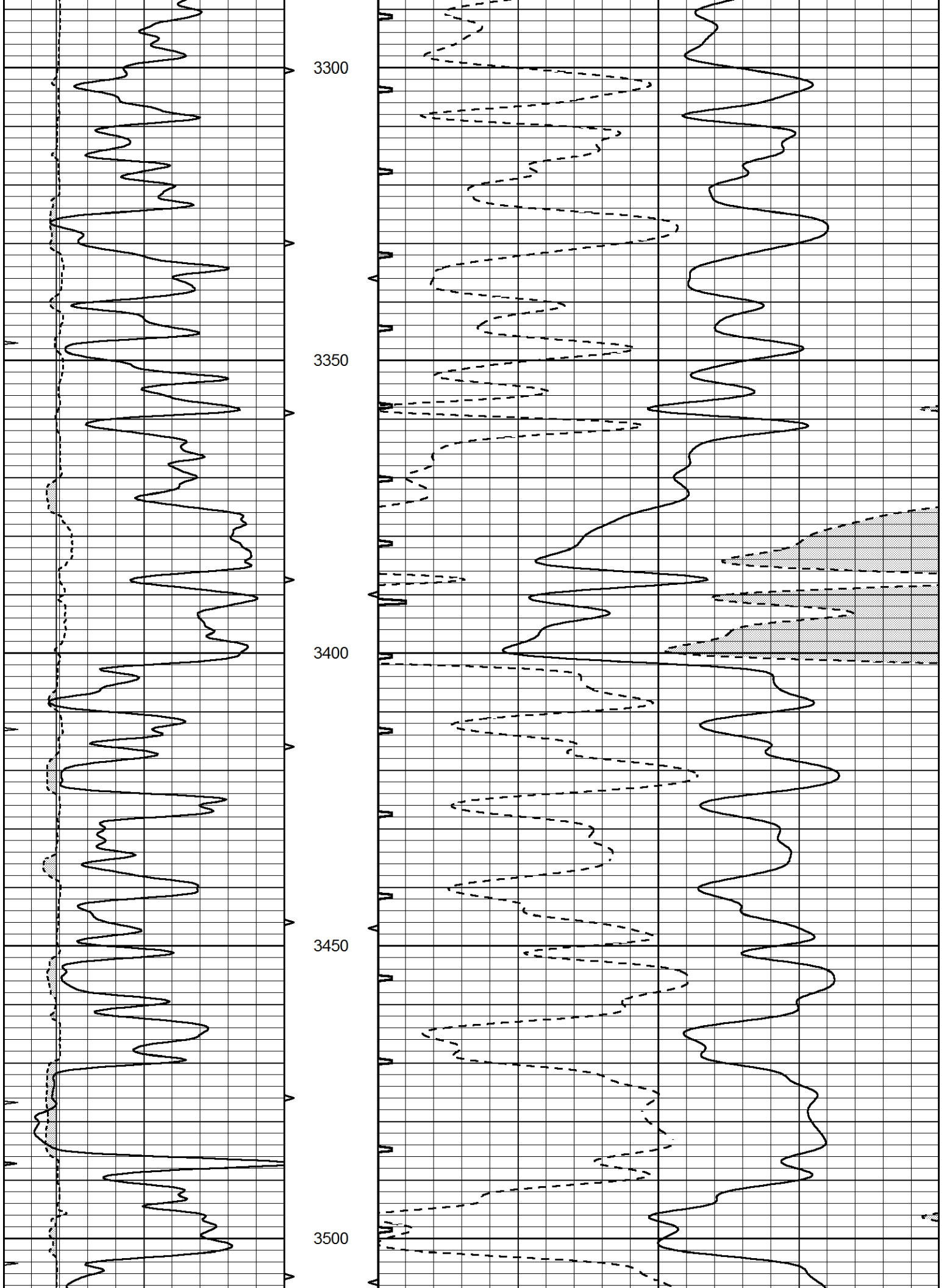
3100

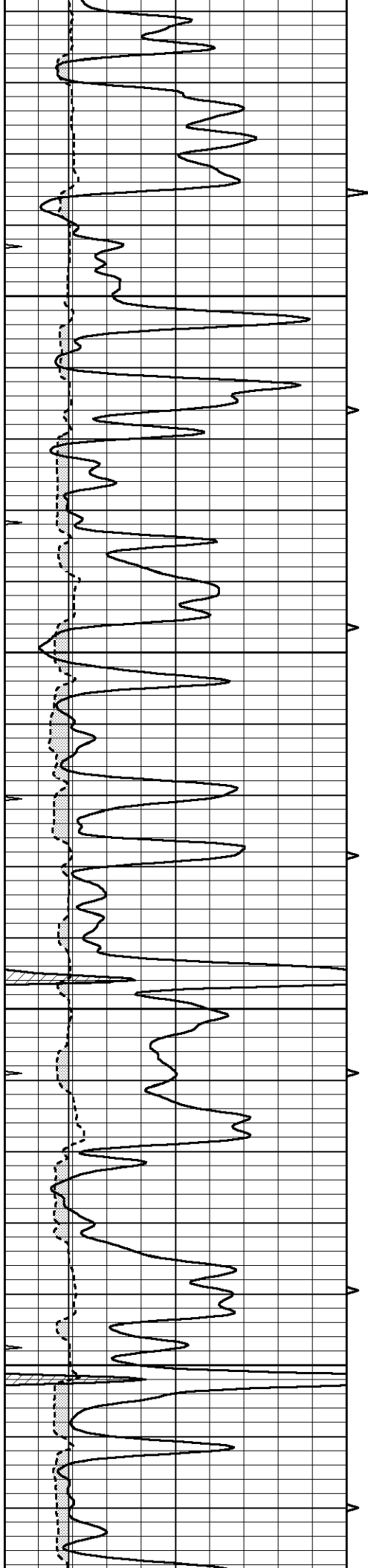
3150

3200

3250





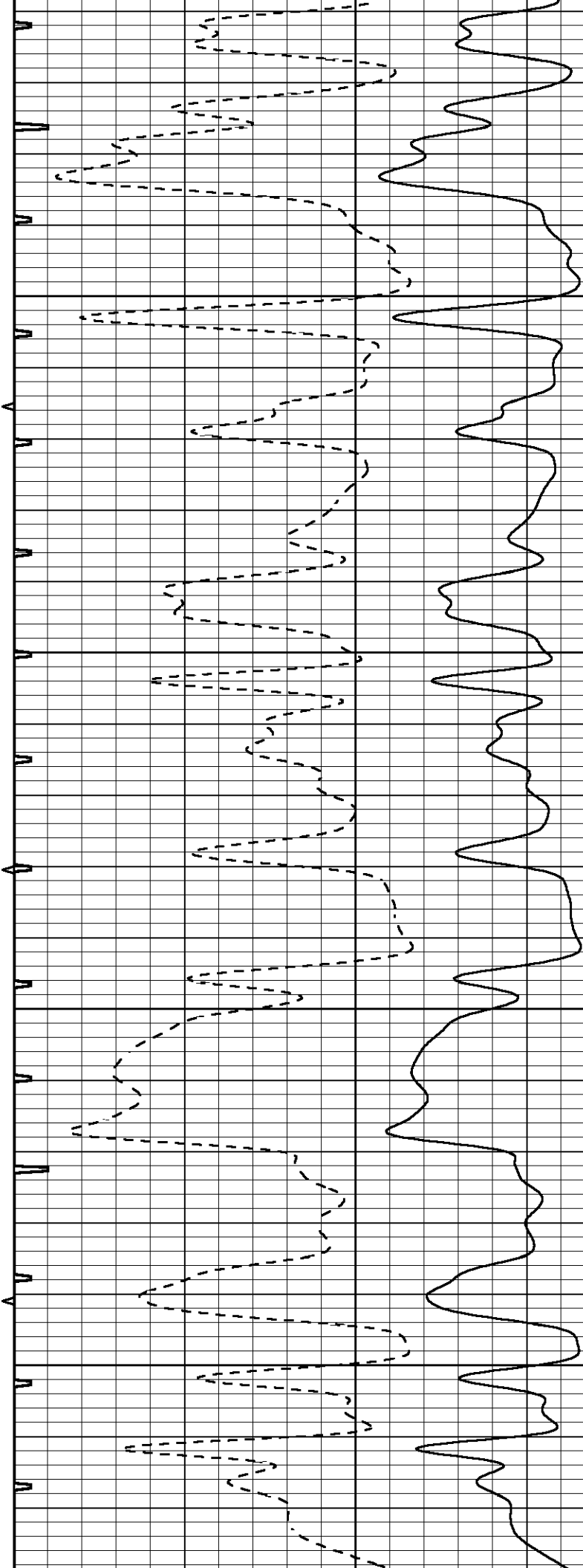


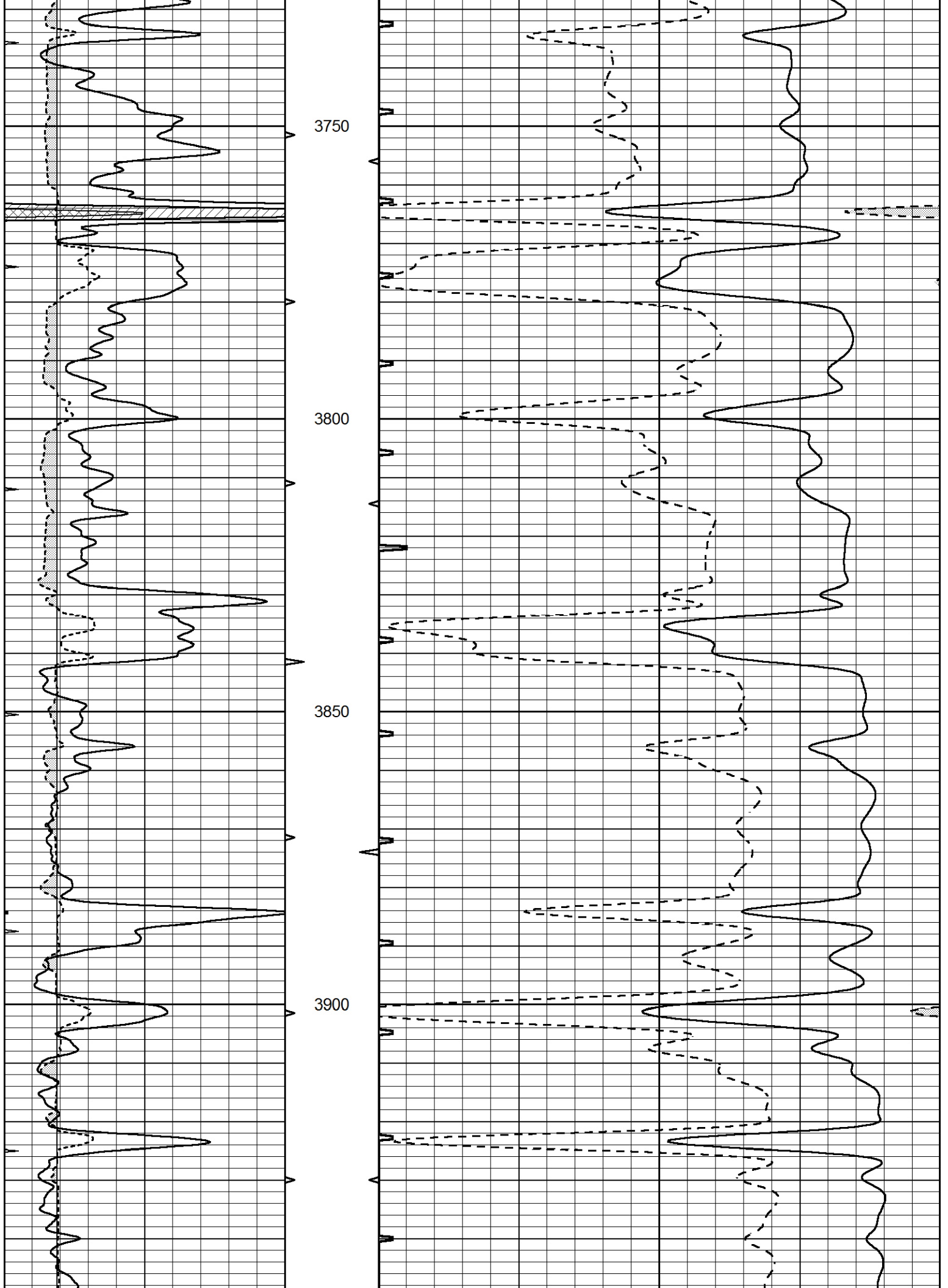
3550

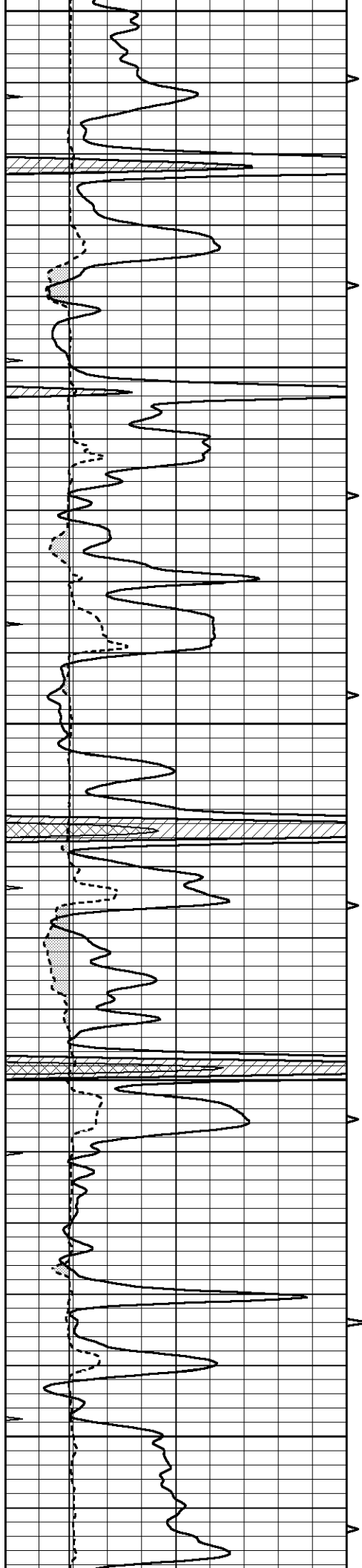
3600

3650

3700







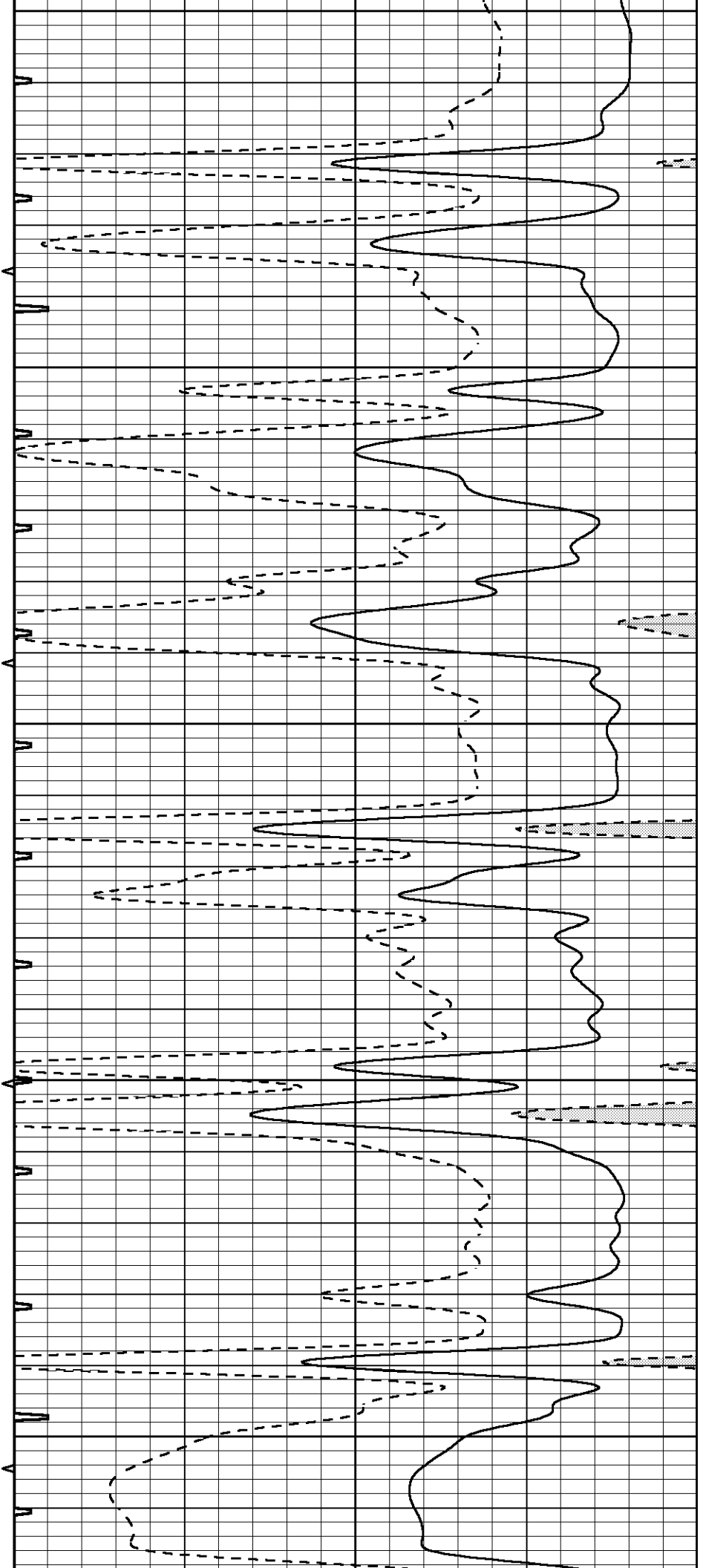
3950

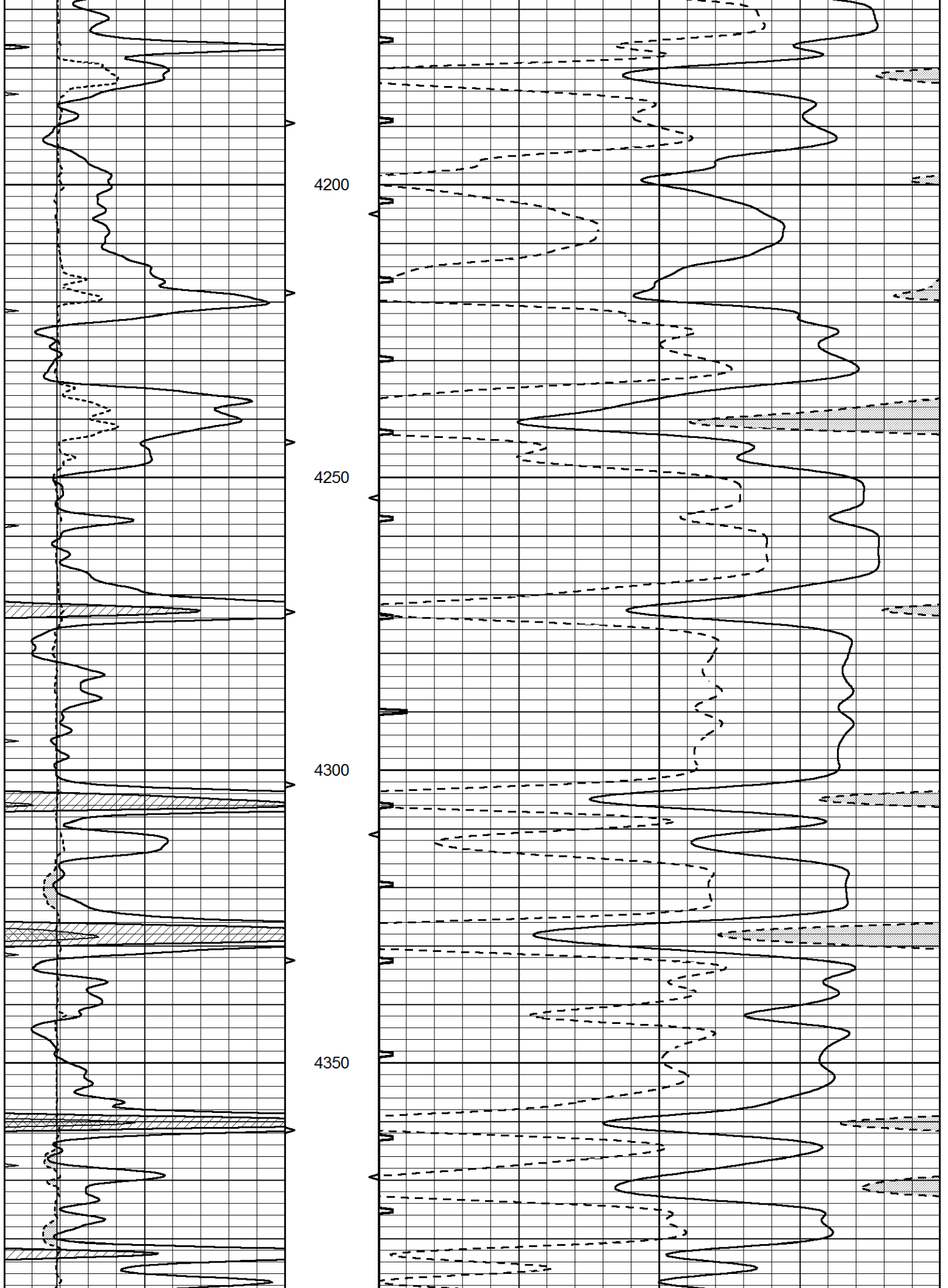
4000

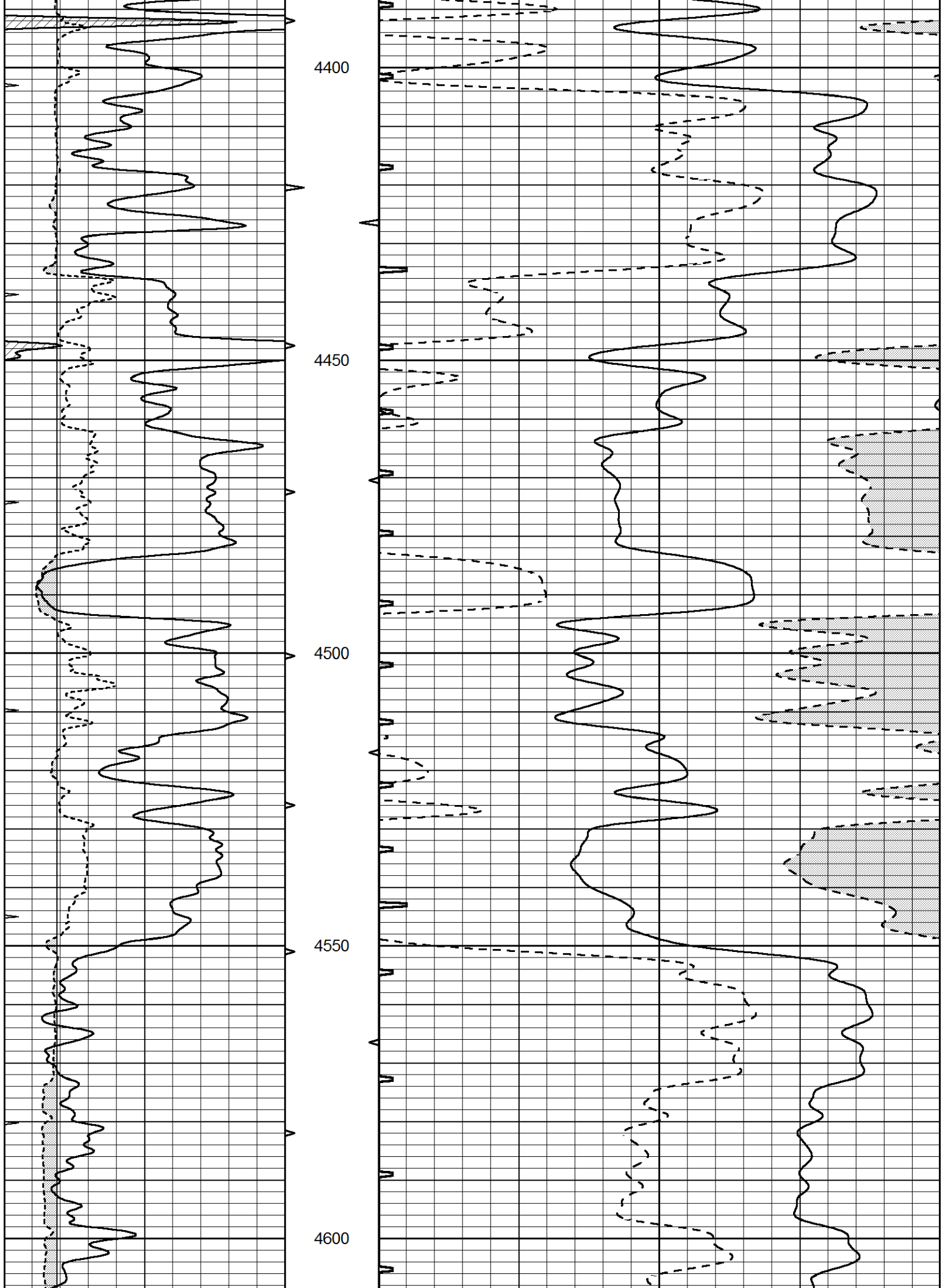
4050

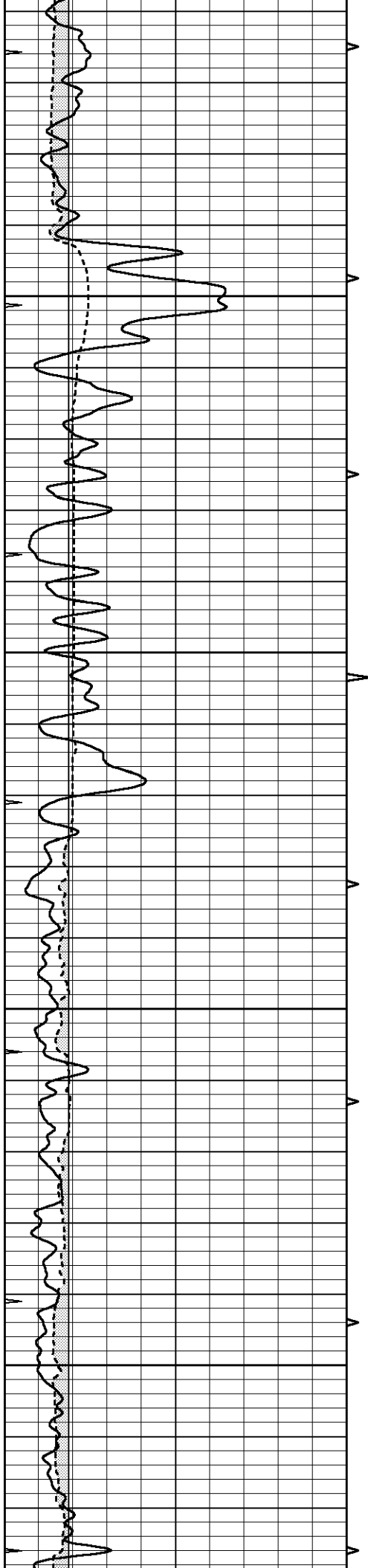
4100

4150







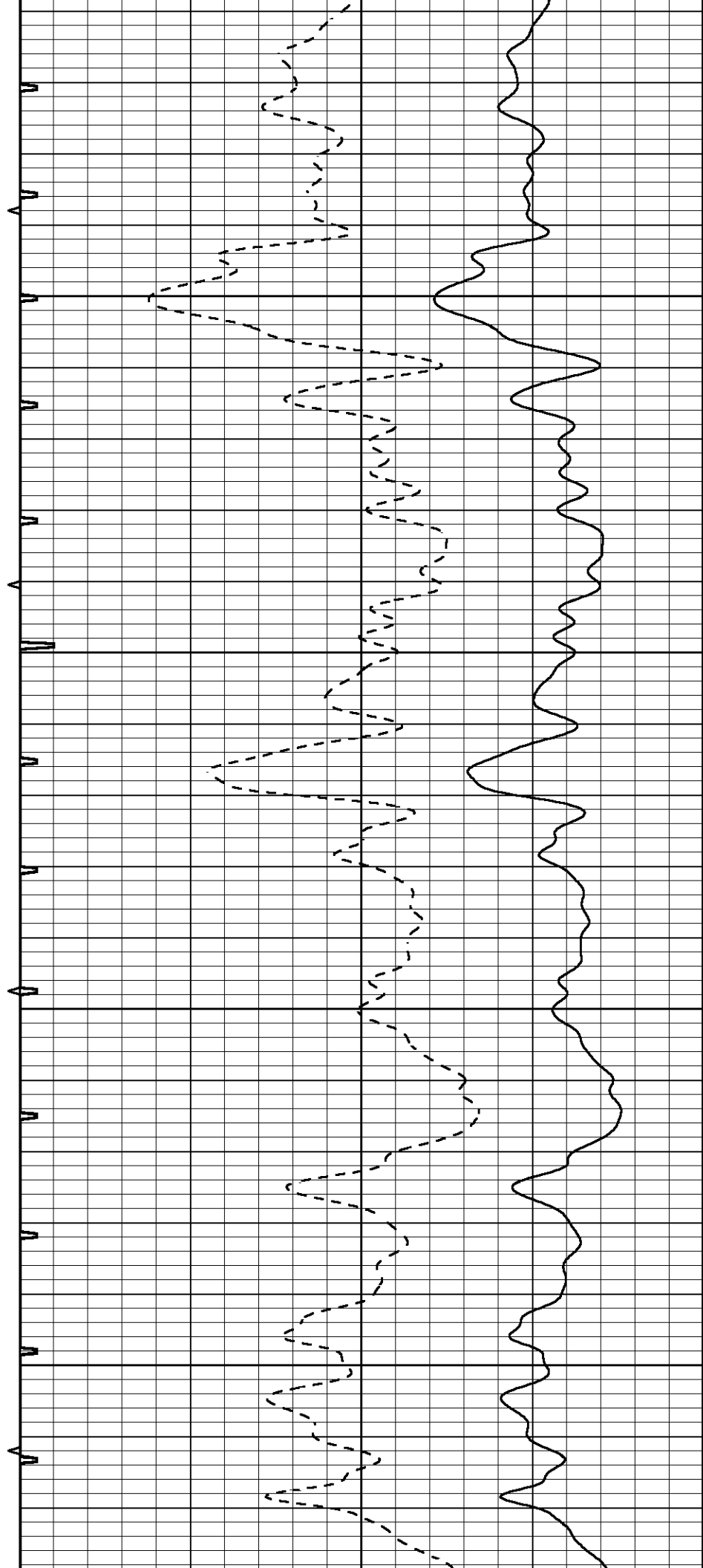


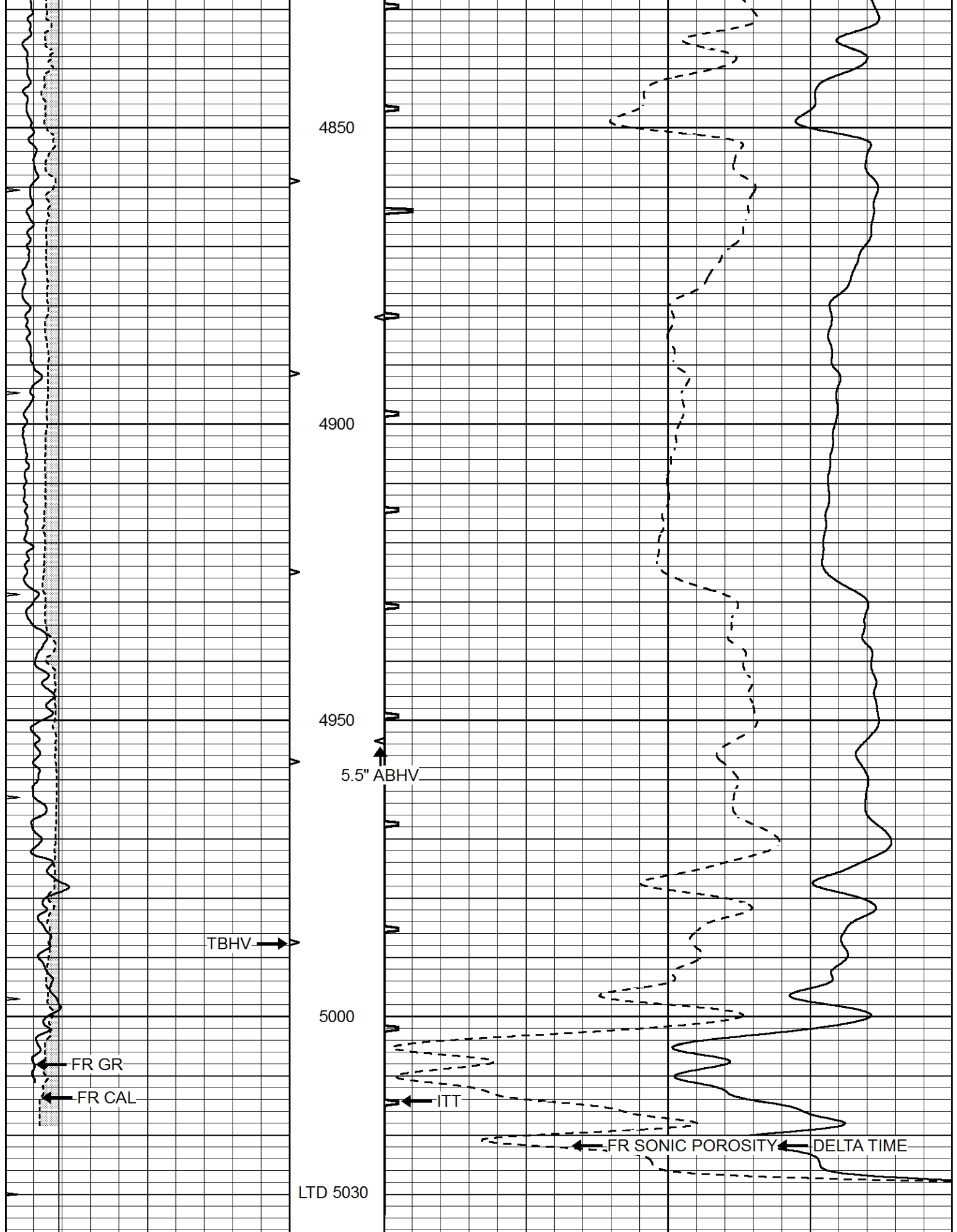
4650

4700

4750

4800





4850

4900

4950

5.5" ABHV

TBHV →

5000

FR GR

FR CAL

ITT

FR SONIC POROSITY

DELTA TIME

LTD 5030

0 GAMMA RAY (GAPI) 150 ABHV 140 DELTA TIME (usec/ft) 40

6 CALIPER (in) 16 10 (ft3) 0 30 SONIC POROSITY (pu) -10

0 MINIMK 20 TBHV 0 ITT (msec) 20

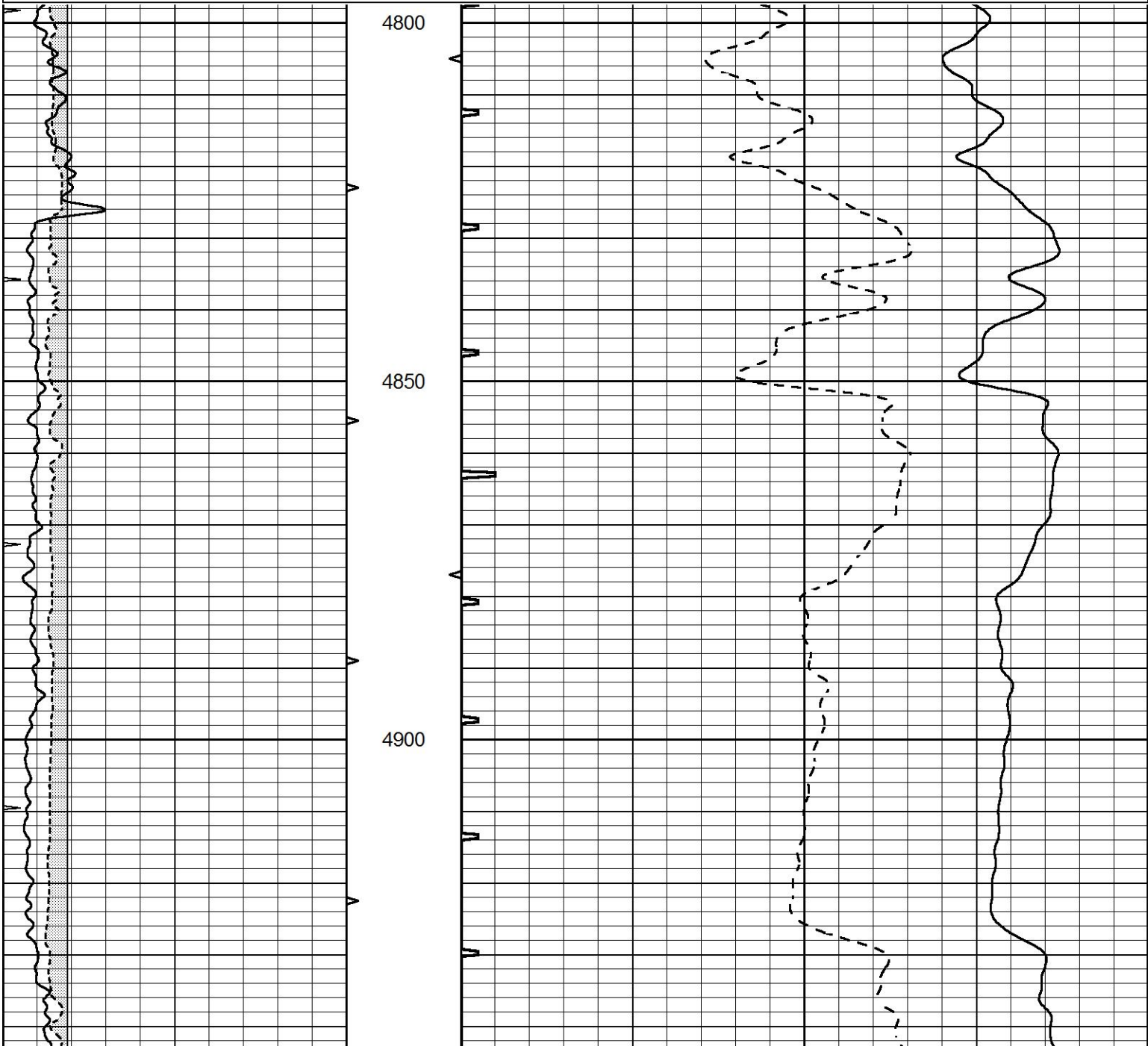
0	MINMK	20	TBHV	0	ITT (msec)	20
			0 (ft3)	10		

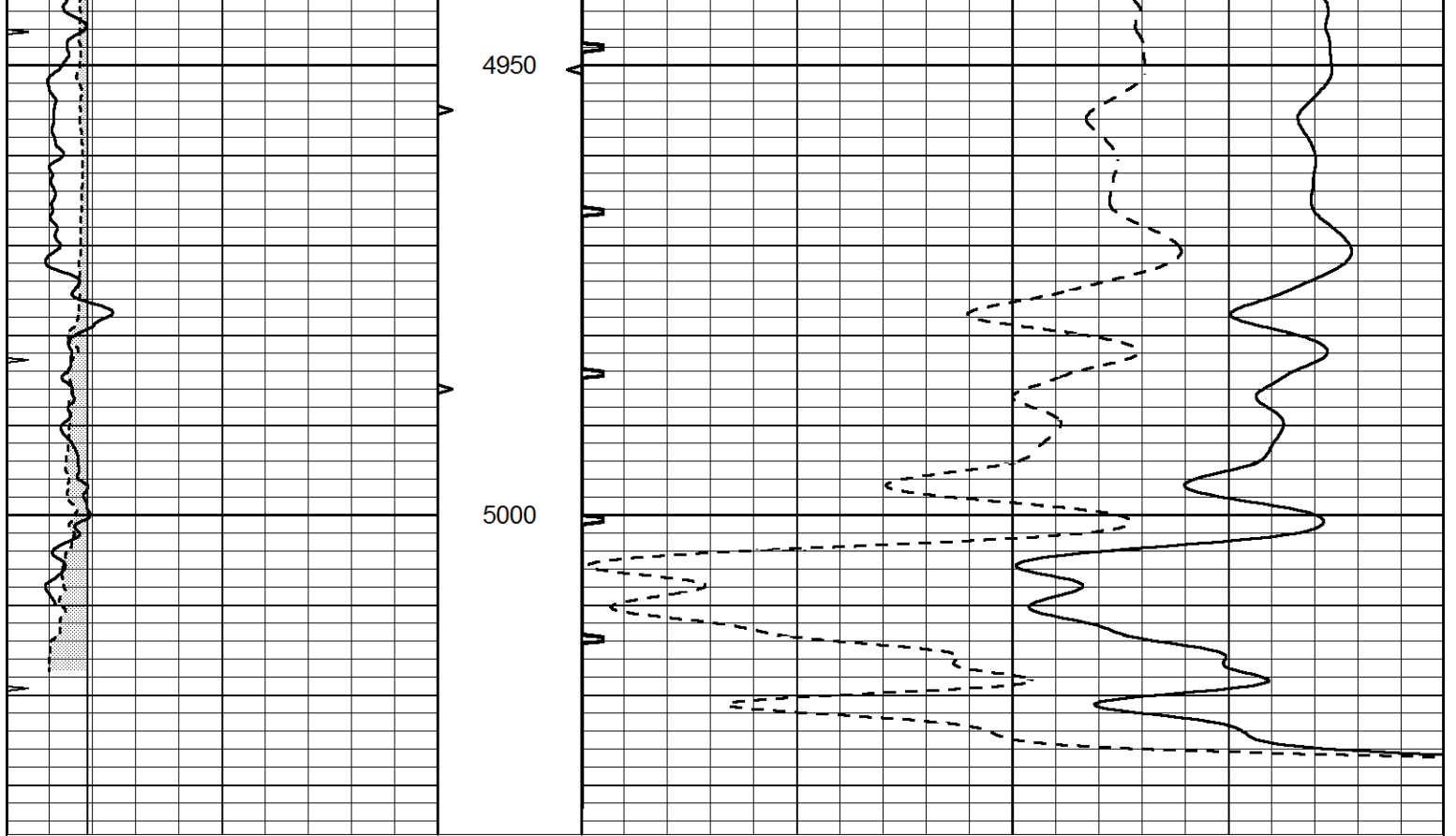


REPEAT SECTION

Database File 7891pe.db
 Dataset Pathname pass6.1
 Presentation Format slt
 Dataset Creation Thu Jun 01 10:12:26 2023
 Charted by Depth in Feet scaled 1:240

0	GAMMA RAY (GAPI)	150	ABHV	140	DELTA TIME (usec/ft)	40
6	CALIPER (in)	16	10 (ft3)	0	30	SONIC POROSITY (pu)
0	MINMK	20	TBHV	0	ITT (msec)	20
			0 (ft3)	10		





0	GAMMA RAY (GAPI)	150	ABHV	140	DELTA TIME (usec/ft)	40	
6	CALIPER (in)	16	10 (ft3)	0	30	SONIC POROSITY (pu)	-10
0	MINMK	20	TBHV	0	ITT (msec)	20	
			0 (ft3)	10			