



MICRO LOG

Company SHAKESPEARE OIL COMPANY, INC.  
 Well OTTLEY #4-10  
 Field CHALK BUTTES  
 County LOGAN  
 State KANSAS

Company SHAKESPEARE OIL COMPANY, INC.  
 Well OTTLEY #4-10  
 Field CHALK BUTTES  
 County LOGAN State KANSAS

Location: 513' FSL & 1612' FEL  
 NE - SE - SW - SE  
 API #: 15-109-21667-0000  
 Permanent Datum GROUND LEVEL Elevation 2768  
 Log Measured From KELLY BUSHING 9' A.G.L.  
 Drilling Measured From KELLY BUSHING  
 SEC 10 TWP 14S RGE 32W  
 Other Services CDL/CNL/PE DIL/SONIC  
 Elevation K.B. 2777 D.F. 2775 G.L. 2768

Date	6/1/23
Run Number	TWO
Depth Driller	5030
Depth Logger	5030
Bottom Logged Interval	5014
Top Log Interval	3500
Casing Driller	8 5/8" @ 264'
Casing Logger	264
Bit Size	7 7/8"
Type Fluid in Hole	CHEMICAL MUD
Density / Viscosity	9.2/63
pH / Fluid Loss	10.0/7.2
Source of Sample	FLOWLINE
Rm @ Meas. Temp	1.00 @ 80F
Rmf @ Meas. Temp	.750 @ 80F
Rmc @ Meas. Temp	1.20 @ 80F
Source of Rmf / Rmc	MEASUREMENT
Rm @ BHT	.640 @ 125F
Time Circulation Stopped	4.5 HOURS
Time Logger on Bottom	8:30 A.M.
Maximum Recorded Temperature	125F
Equipment Number	922339
Location	HAYS, KANSAS
Recorded By	JEFF LUEBBERS
Witnessed By	KENT MATSON

<<< Fold Here >>>

All interpretations are opinions based on inferences from electrical or other measurements and we cannot and do not guarantee the accuracy or correctness of any interpretation, and we shall not, except in the case of gross or willful negligence on our part, be liable or responsible for any loss, costs, damages, or expenses incurred or sustained by anyone resulting from any interpretation made by any of our officers, agents or employees. These interpretations are also subject to our general terms and conditions set out in our current Price Schedule.

15-109-21667-0000 Comments

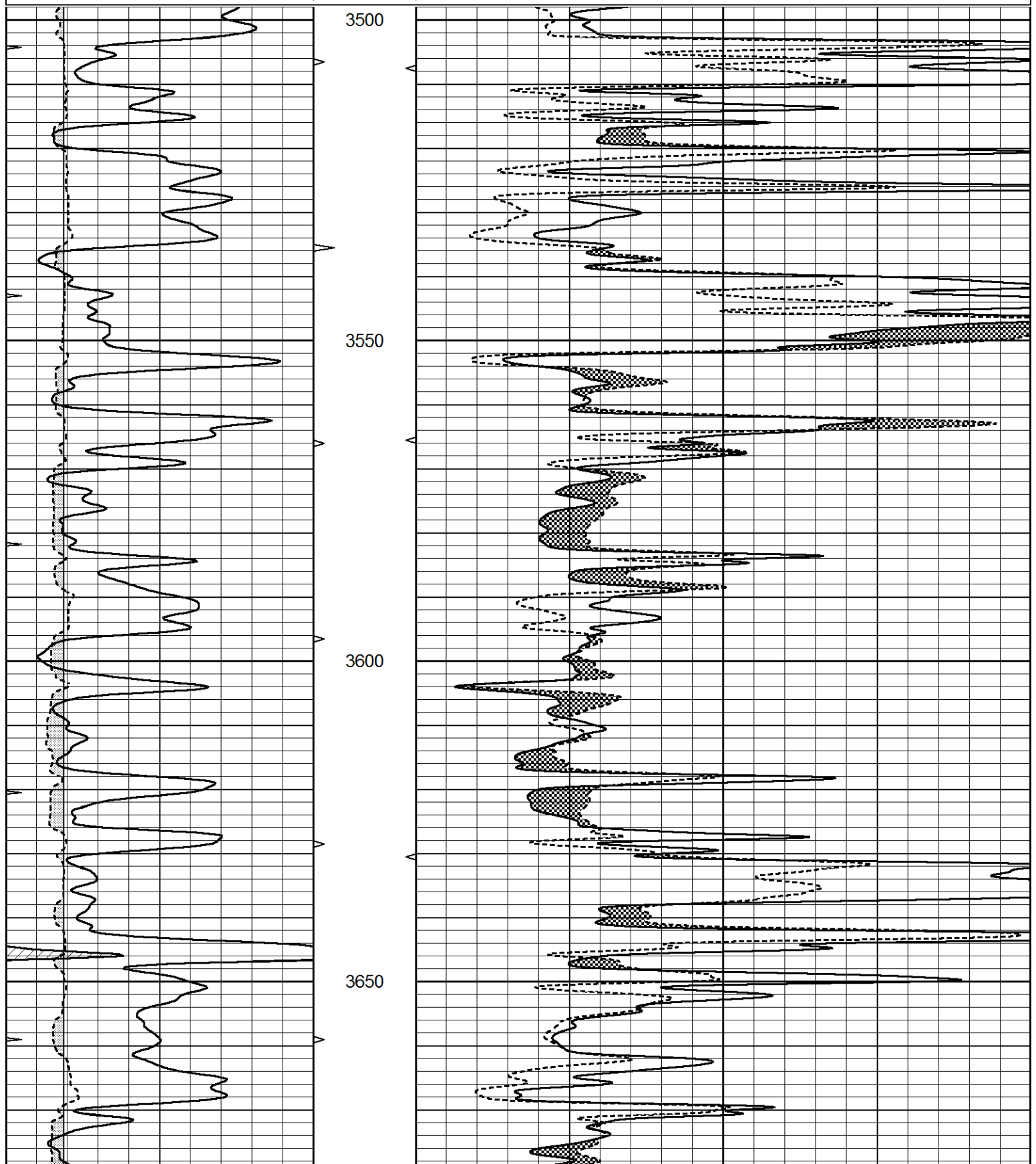
THANK YOU FOR USING ELI WIRELINE HAYS, KANSAS (785) 628-6395  
 DIRECTIONS  
 OAKLEY, KS., 19S. ON HWY 83, 1/2 W. INTO

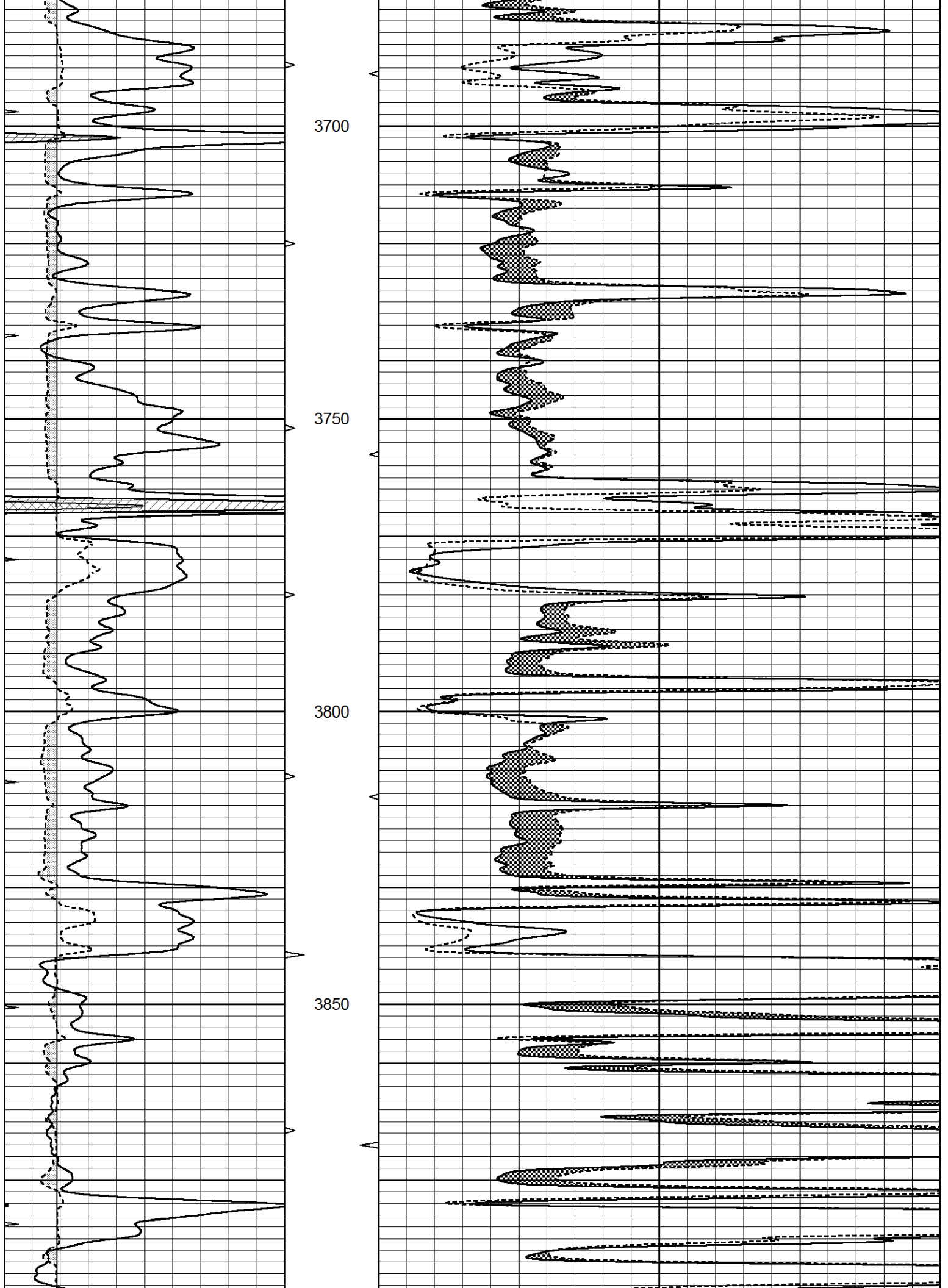


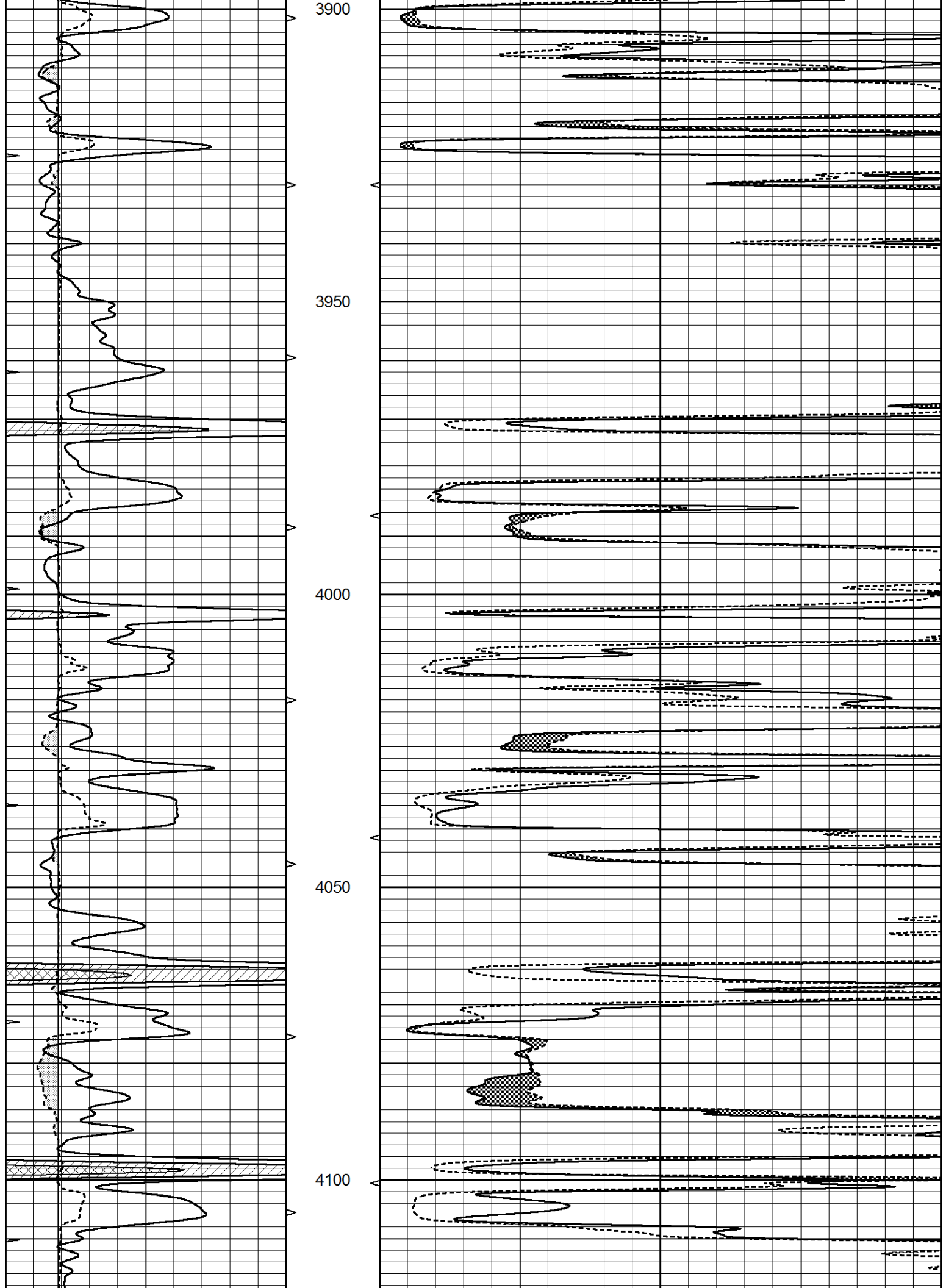
# MAIN SECTION

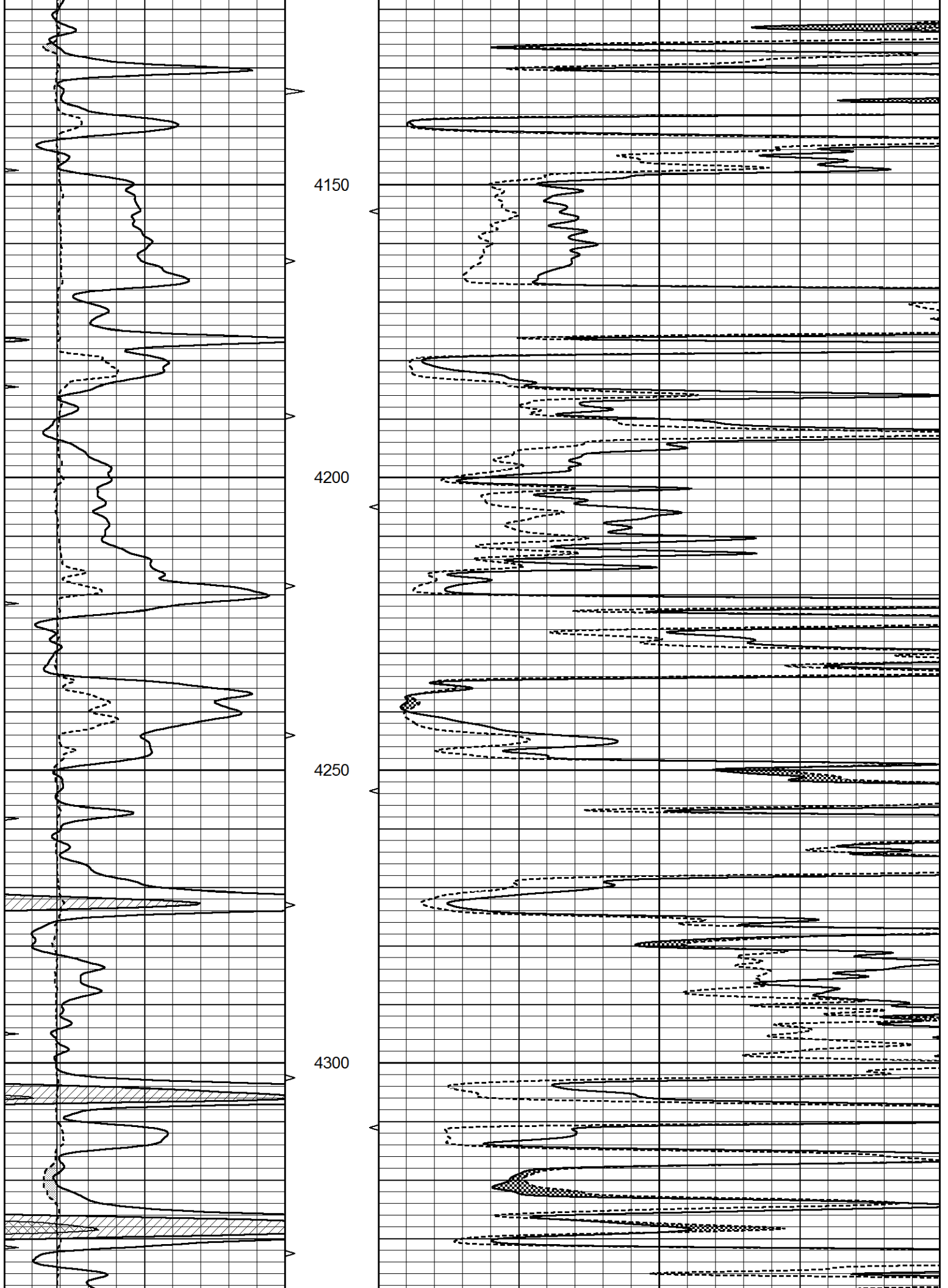
Database File 7891pe.db  
 Dataset Pathname pass7.2  
 Presentation Format \_micro  
 Dataset Creation Thu Jun 01 10:08:59 2023  
 Charted by Depth in Feet scaled 1:240

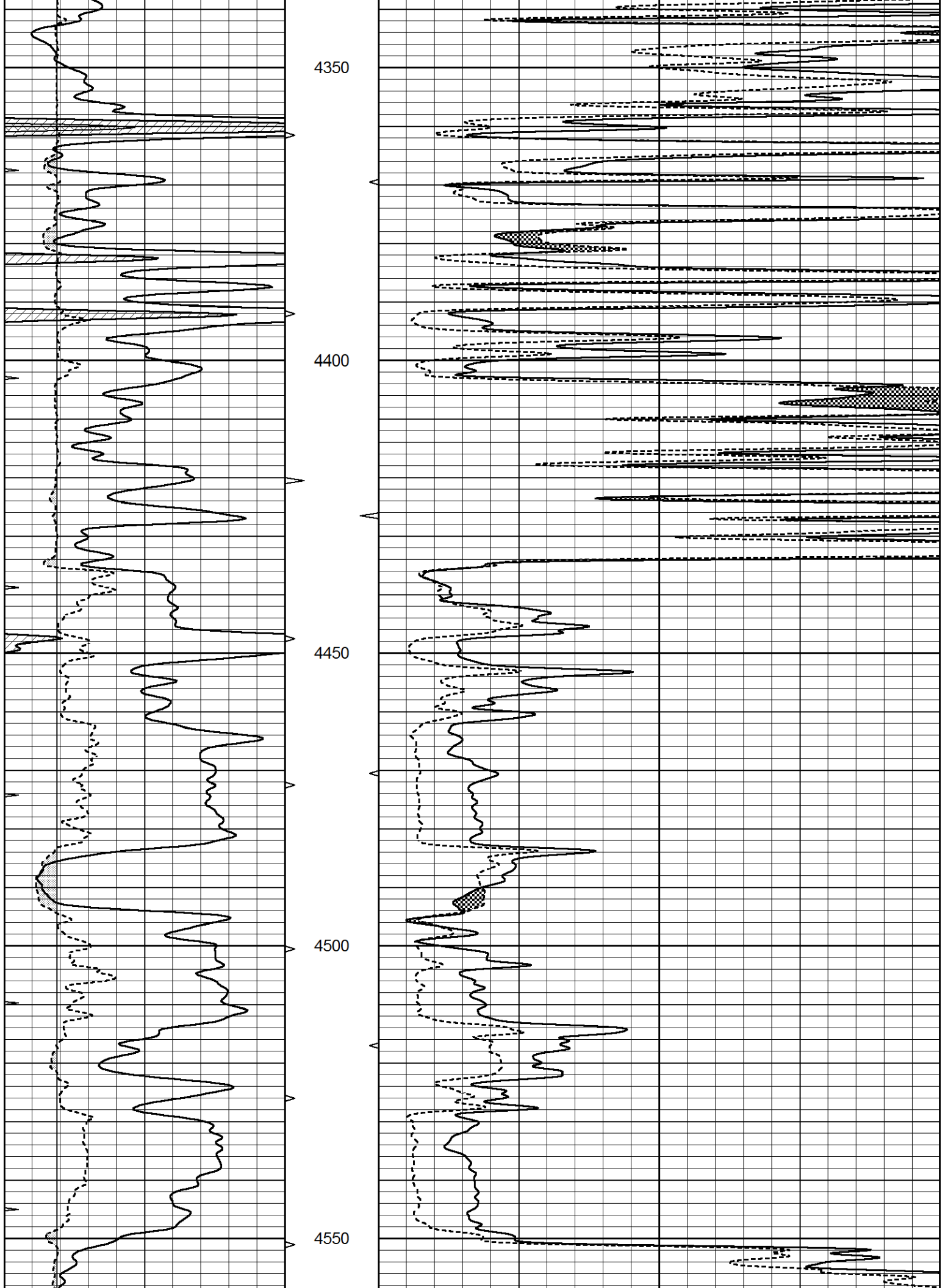
0	GAMMA RAY (GAPI)	150	ABHV	0	MEL1.5 (Ohm-m)	40
6	CALIPER (in)	16	10 (ft3)	0	MEL2.0 (Ohm-m)	40
0	MINMK	20	TBHV			
			0 (ft3)	10		

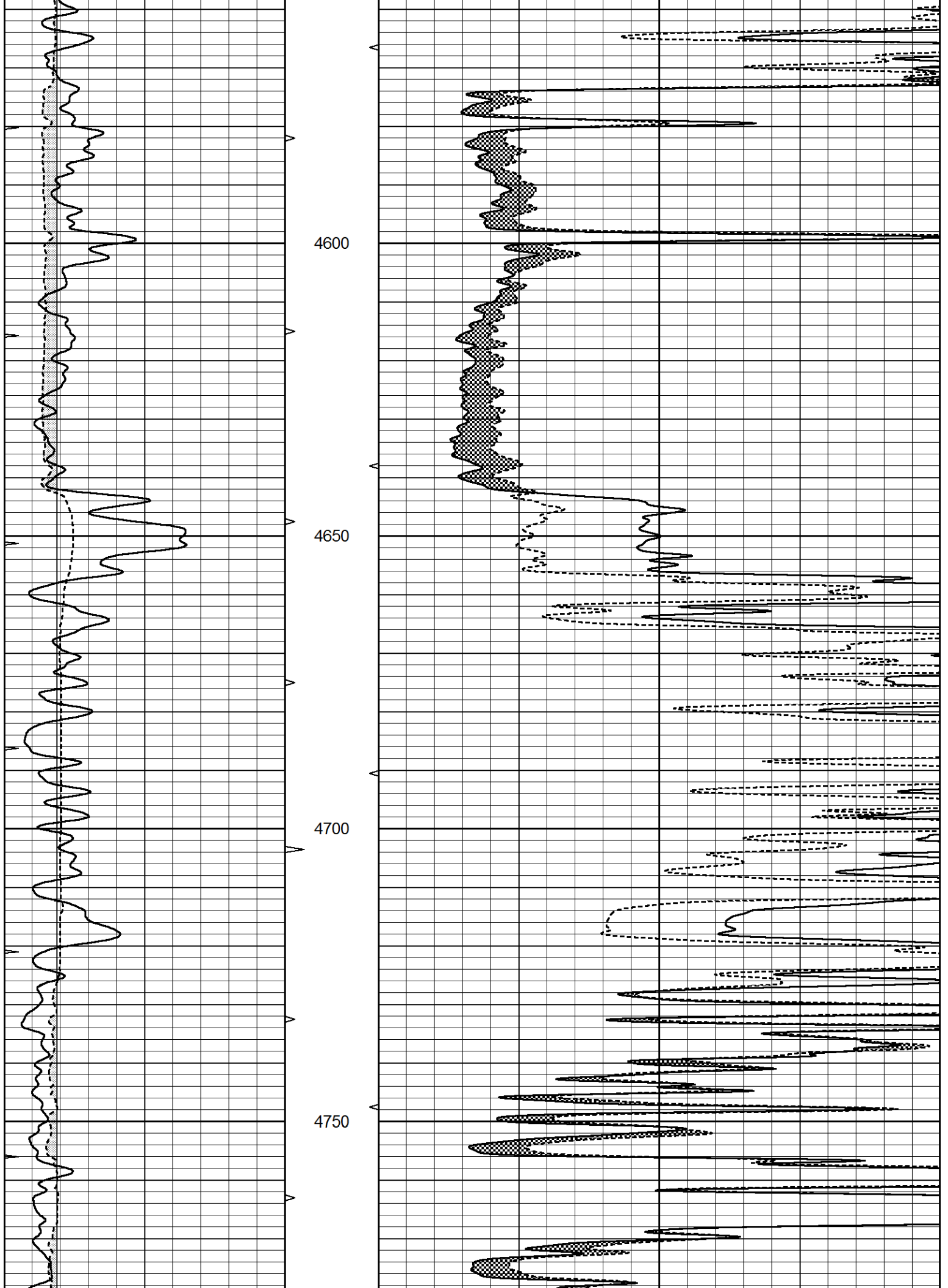


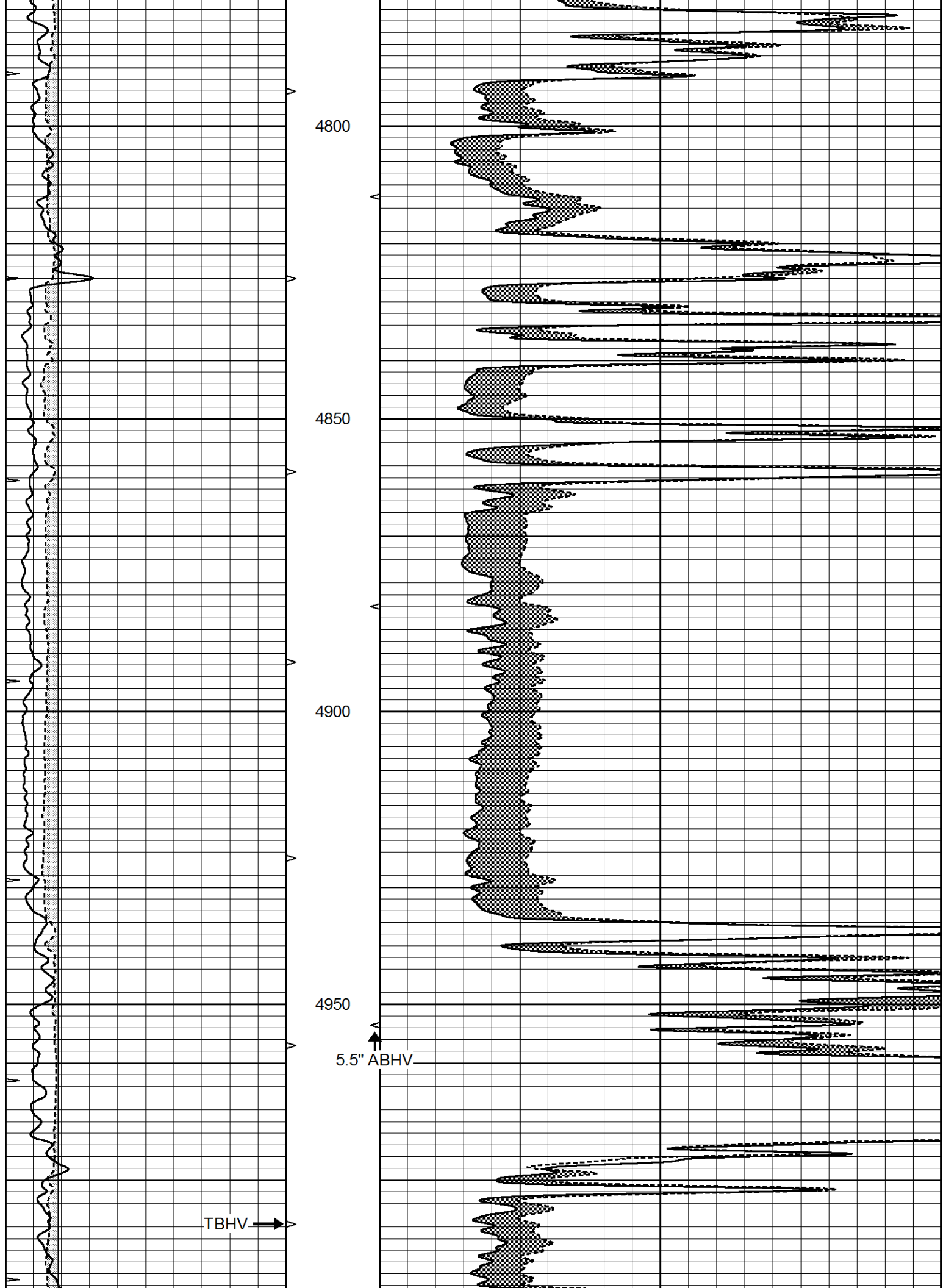


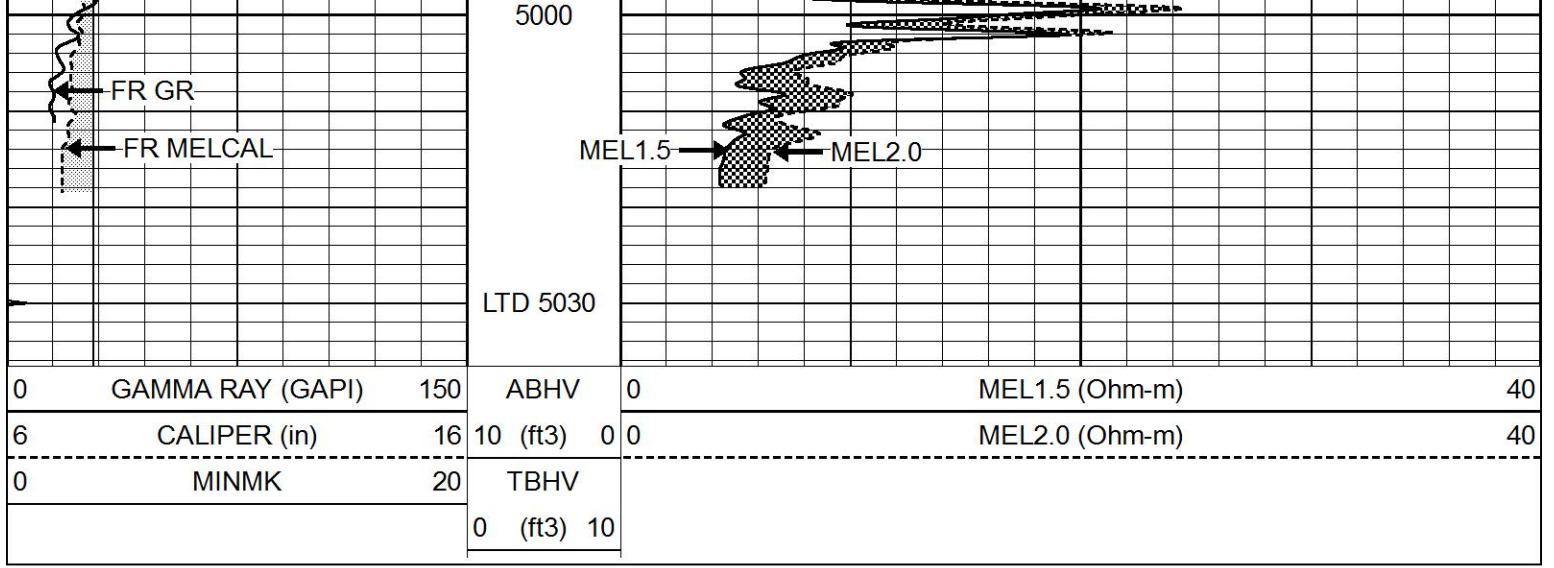








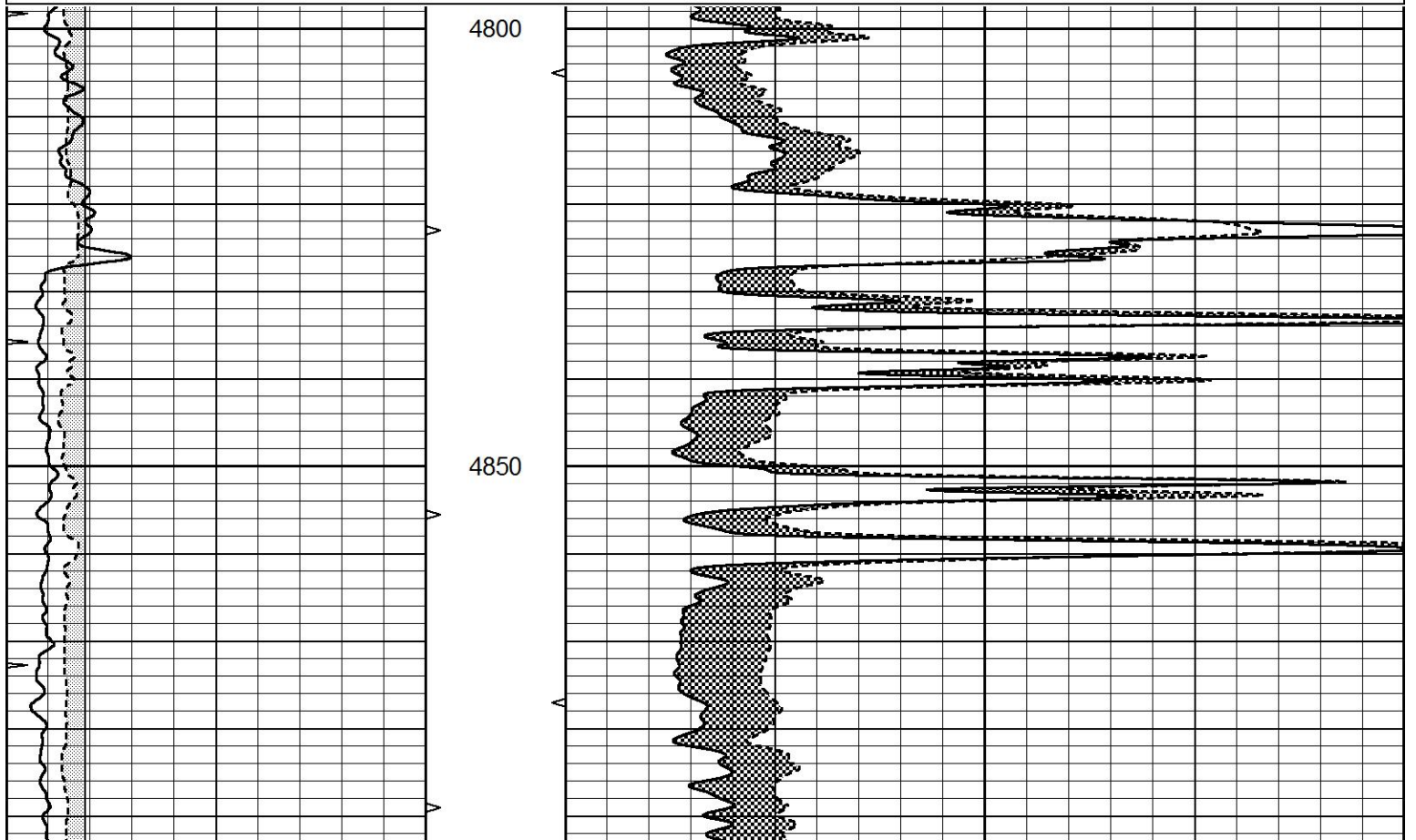


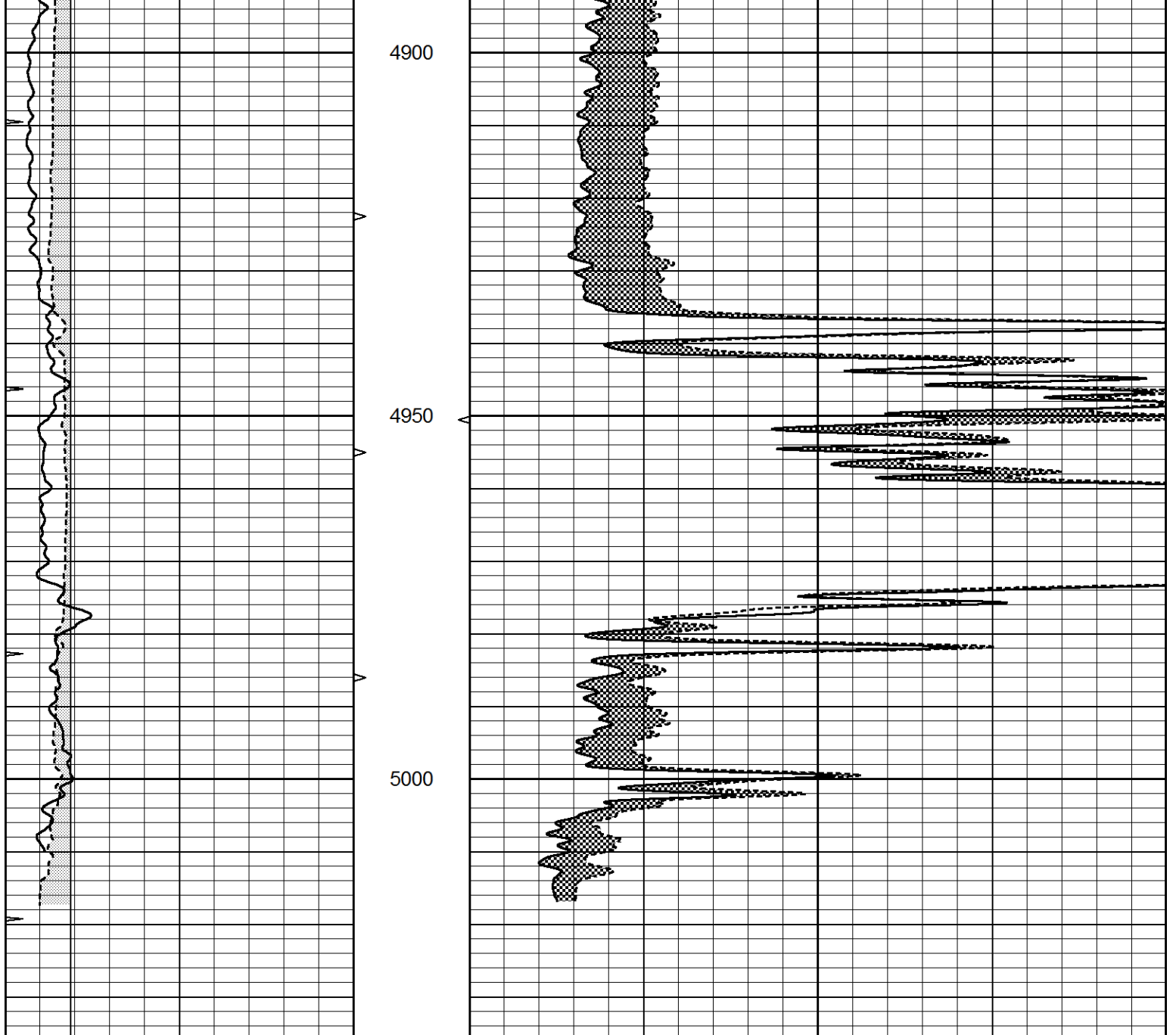


# REPEAT SECTION

Database File 7891pe.db  
 Dataset Pathname pass6.1  
 Presentation Format \_micro  
 Dataset Creation Thu Jun 01 10:12:26 2023  
 Charted by Depth in Feet scaled 1:240

0	GAMMA RAY (GAPI)	150	ABHV	0	MEL1.5 (Ohm-m)	40
6	CALIPER (in)	16	10 (ft3)	0	MEL2.0 (Ohm-m)	40
0	MINMK	20	TBHV			
			0 (ft3)	10		





0	GAMMA RAY (GAPI)	150	ABHV	0	MEL1.5 (Ohm-m)	40
6	CALIPER (in)	16	10 (ft3)	0	MEL2.0 (Ohm-m)	40
0	MINMK	20	TBHV			
			0 (ft3)	10		

### Calibration Report

Database File 7891pe.db  
 Dataset Pathname pass7.2  
 Dataset Creation Thu Jun 01 10:08:59 2023

### MICRO Calibration Report

Serial Number: 070912  
 Tool Model: ProbeN  
 Performed: Thu Jun 01 09:13:13 2023

Caliper Calibration: Gain=3.810 Offset=-0.381

References Low Cal High Cal  
 Readings 8.000 16.000  
 2.200 4.200

Readings	2.200	4.300
1.5" Calibration:	Gain=44.000	Offset=-3.000
References	Low Cal 0.000	High Cal 20.000
Readings	0.002	1.239

2" Calibration:	Gain=45.000	Offset=0.000
References	Low Cal 0.000	High Cal 20.000
Readings	0.003	1.075

Gamma Ray Calibration Report

Serial Number:	070558	
Tool Model:	OPEN_GR	
Performed:	Thu Jun 01 09:11:09 2023	
Calibrator Value:	1.0	GAPI
Background Reading:	0.0	cps
Calibrator Reading:	1.0	cps
Sensitivity:	0.3000	GAPI/cps