



Scale 1:240 (5"=100') Imperial
Measured Depth Log

Well Name: Krebs P #3
 API: 15-109-21661
 Location: NW NW SE, Section 29-T14S-R32W
 License Number: 9408
 Spud Date: 12/15/2022
 Surface Coordinates: 2310' FSL & 2310 FEL
 Region: Logan County, KS
 Drilling Completed: 1/4/2023

Bottom Hole Coordinates:
 Ground Elevation (ft): 2655' K.B. Elevation (ft): 2663'
 Logged Interval (ft): 3450' To: TD Total Depth (ft): 4387'
 Formation: LKC, Altamont, Morrow
 Type of Drilling Fluid: Chemical Mud

Printed by MudLog from WellSight Systems 1-800-447-1534 www.WellSight.com

OPERATOR

Company: Trans Pacific Oil Corporation
 Address: 100 S. Main St. Suite #200
 Wichita, KS 67202

GEOLOGIST

Name: Nick Hixon
 Company: Trans Pacific Oil Corporation
 Address: 100 S. Main St. Suite #200
 Wichita, KS 67202

ROCK TYPES

Siltstn	Brec	Dol	Mrlst	Sltst
Grysh	Cht	Gyp	Salt	Ss
Dolm	Clyst	Igne	Shale	Till
Anhy	Blksh	Lmst	Shcol	
Bent	Congl	Meta	Shgy	

ACCESSORIES

MINERAL	Gyp	FOSSIL	Ostra	Sltstrg
Anhy	Hvymin	Algae	Pelec	Ssstrg
Arggrn	Kaol	Amph	Pellet	TEXTURE
Arg	Marl	Belm	Pisolite	Boundst
Bent	Minxl	Bioclst	Plant	Chalky
Bit	Nodule	Brach	Strom	Cryxin
Brecfrag	Phos	Bryozoa	STRINGER	Earthy
Calc	Pyr	Cephal	Anhy	Finexln
Carb	Salt	Coral	Arg	Grainst
Chtdk	Sandy	Crin	Bent	Lithogr
Chtlt	Silt	Echin	Coal	Microxln
Dol	Sil	Fish	Gyp	Mudst
Feldspar	Sulphur	Foram	Ls	Packst
Ferrpel	Tuff	Fossil	Mrst	Wackest
Ferr		Gastro		
Glau		Oolite		

OTHER SYMBOLS

POROSITY	Vuggy	ROUNDING	Even	Dst
Earthy	SORTING	Rounded	Spotted	EVENT
Fenest	Well	Subrnd	Ques	Rft
Fracture	Moderate	Subang	Dead	Sidewall
Inter	Poor	Angular	INTERVAL	
Moldic		OIL SHOW	Dst1	
Organic		Gas	Core	
Pinpoint				

DST #1

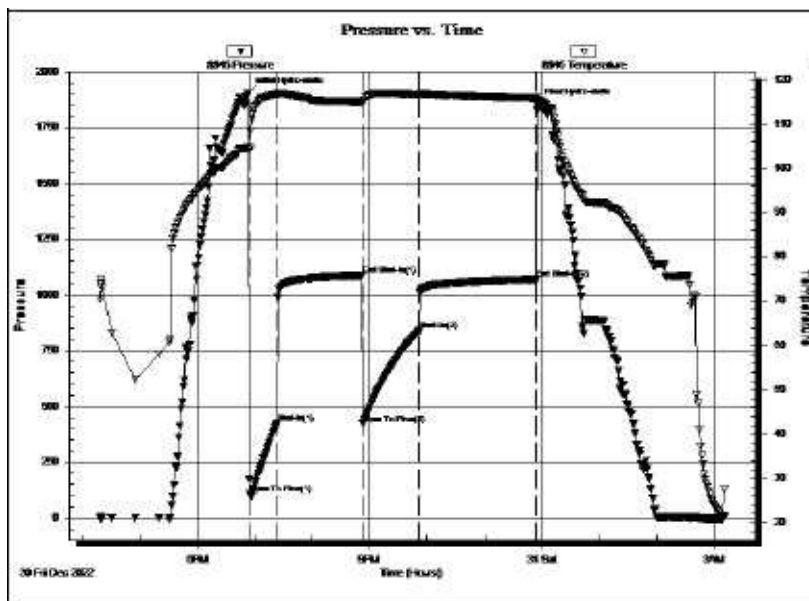
LKC H-J
3779' - 3895'
30-90-60-120

IF: GD BLOW, BOB 3 MIN, BUILT TO 93"
ISI: 1/4" RETURN, DIED IN 10 MIN
FF: BOB IN 3 MIN, BUILT TO 134"
FSI: NO RETURN

REC: 1700' MUD-CUT WATER W/ OIL
SPOTS IN TOOL

WATER SALINITY: 59,000 PPM

HSP: 1903-1854 PSI
IF: 108-424 PSI
FF: 422-840 PSI
SIP: 1087-1071 PSI



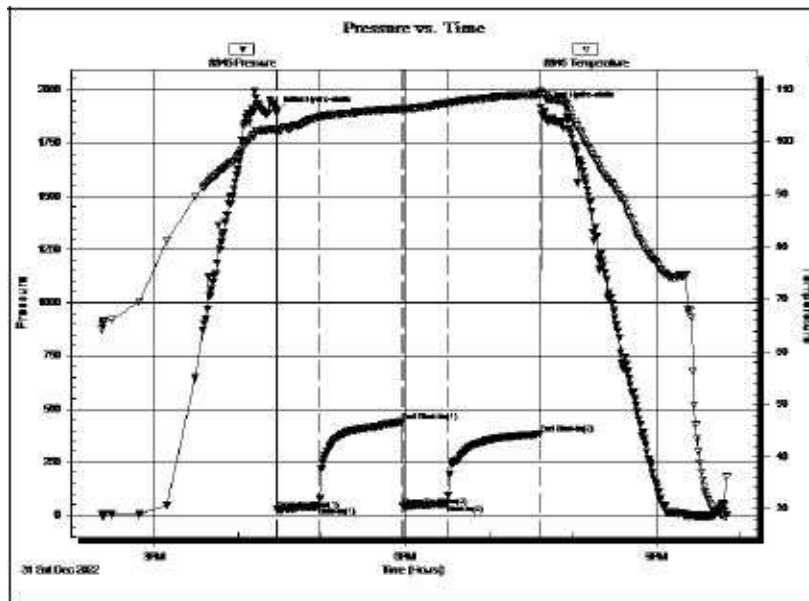
DST #2

LKC K-L
3888' - 3980'
30-60-30-60

IF: SURFACE BLOW, BUILT TO 3"
ISI: NO RETURN
FF: SURFACE BLOW, BUILT TO 1"
FSI: NO RETURN

REC: 70' WATER-CUT MUD W/ OIL
SPOTS IN TOOL

HSP: 1894-1917 PSI
IF: 29-41 PSI
FF: 44-55 PSI
SIP: 441-383 PSI



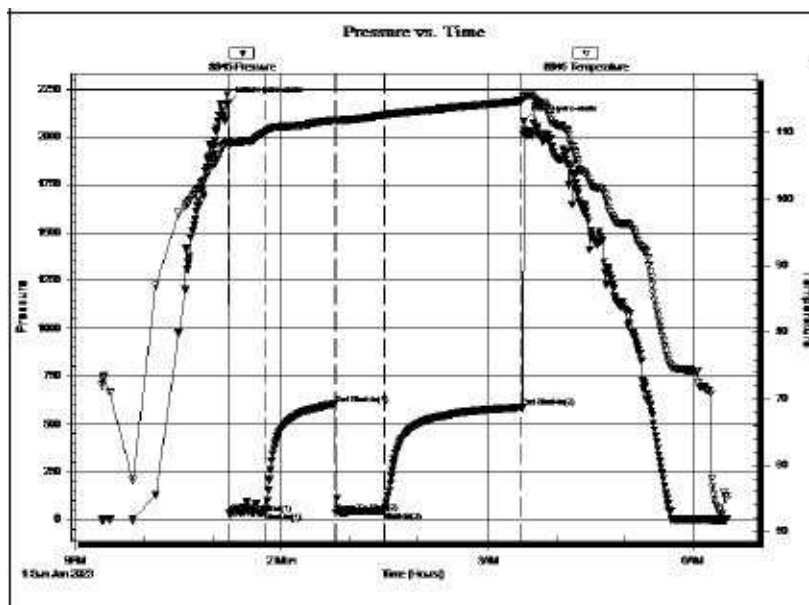
DST #3

FT SCOTT - JOHNSON
4166' - 4246'
30-60-40-120

IF: SURFACE BLOW, BUILT TO 1"
ISI: NO RETURN
FF: SURFACE BLOW, DIED @ 35 MIN
FSI: NO RETURN

REC: 25' MUD W/ OIL SPOTS IN TOOL

HSP: 2178-2078 PSI
IF: 34-39 PSI
FF: 37-43 PSI
SIP: 604-589 PSI



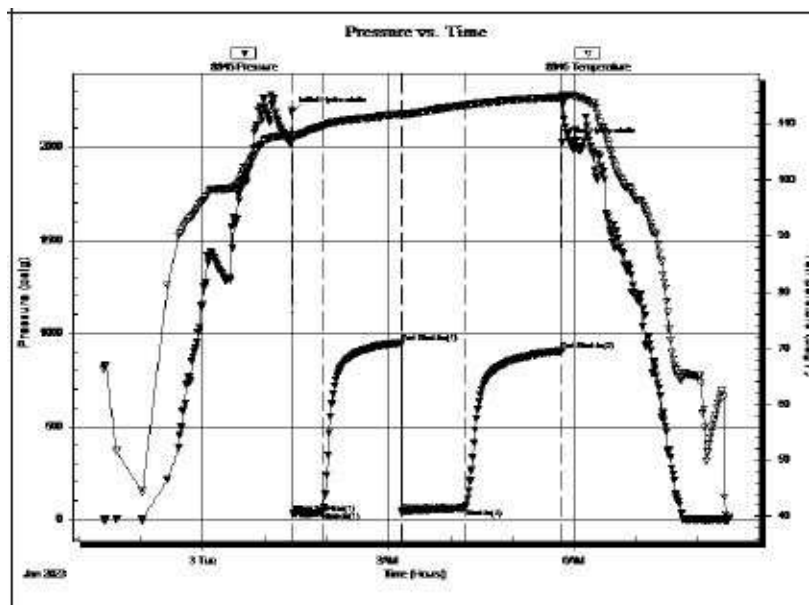
DST #4

MORROW
4238' - 4305'
30-75-60-90

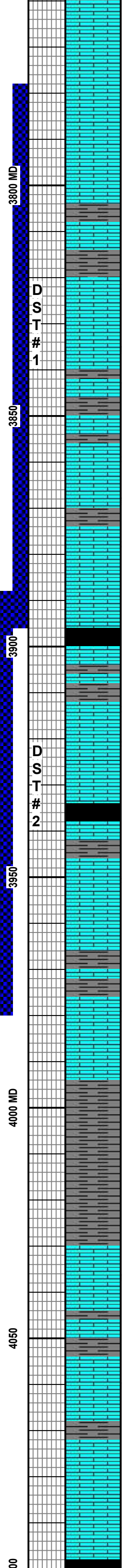
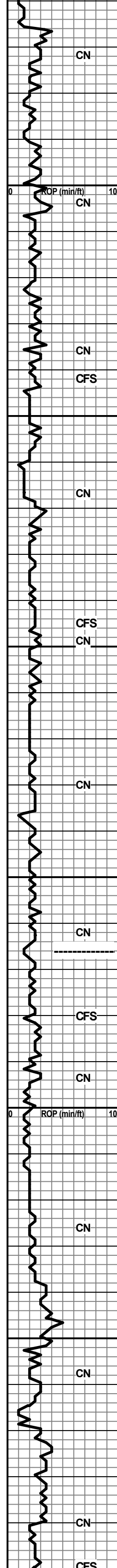
IF: SURFACE BLOW, BUILT TO 3"
ISI: NO RETURN
FF: SURFACE BLOW, BUILT TO 3"
FSI: NO RETURN

REC: 80' MUD W/ OIL SPOTS IN TOOL

HSP: 2185-2021 PSI
IF: 28-40 PSI
FF: 43-61 PSI
SIP: 948-904 PSI



Curve Track 1 ROP (min/ft)	MD	Porosity	Lithology	Geological Descriptions	Comments
	3480 3500 3550 3600 MD 3650 3700 3750	24% 18% 12% 6%		<p style="text-align: center;">GEO ON LOCATION @ 8 AM 12/29/2022</p> <p>LS: GRY - CRM, F XLN, DSE, PR - FR PPT & INT XLN POR, CHLKY IN PT, NSFO, NO ODOR. ABND RD SH, SFT.</p> <p>LS: GRY - CRM, F XLN, DSE, PR - FR PPT POR, SME FR INT XLN POR W/ RARE DRK BRN SPOTTY STN, VSSFO ON BRK W/ FEW GAS BUB, NO ODOR. SH: RD, SFT.</p> <p>ABND GRY GUMMY CLAY. LS: GRY - TAN, F XLN, DSE, PR PPT & INT XLN POR, NSFO, NO ODOR. SH: GRY - RD - BLK, CARB IN PT.</p> <p>LS: OFF WHT - GRY - TAN, F XLN, DSE, PR - FR PPT & INT XLN POR, 2-3 PCS W/ HVY BLK STN, NSFO, NO ODOR, SLI CHLKY IN PT. SH: RD - DRK MAROON, SME GRY PCS, SFT.</p> <p>LS: OFF WHT - GRY - TAN, F XLN, DSE, FEW FOSS, PR PPT POR, SME PCS W/ PR - FR INT XLN POR, FEW SMALL VUGS, NSFO, NO ODOR. CHLKY - SUB CHLKY IN PT. SH: ORG - RD - BLK, SLI GUMMY IN PT.</p> <p>LS: GRY - TAN, F XLN, PR - FR INT XLN POR, SME PR - FR PPT POR, FEW W/ PR - FR VUGGY POR, RARE DRK BRN - BLK STN IN PT, VSSFO & GAS BUB ON BRK, NO ODOR. SH: GRY - RD - BLK.</p> <p style="text-align: center;">HEEB. 3602' (-939') ELOG 3602' (-939')</p> <p>SH: BLK, CARB. LS THRUOUT: GRY, F XLN, DSE, PR PPT POR, RARE BRN STN IN PT, NSFO, NO ODOR.</p> <p>ABUNDANT GRY GUMMY CLAY. LS: GRY - LT BRN, F XLN, PR PPT POR, NSFO.</p> <p>ABUNDANT GRY GUMMY CLAY. LS: GRY - LT BRN, F XLN, DSE, PR PPT & INT XLN POR, FEW SMALL VUGS, 3-4 PCS W/ DRK BRN DEAD STN IN PT, NSFO, NO ODOR. SH: GRY - RD - BLK. FRESH CHRT IN PT.</p> <p>LS: OFF WHT - GRY - LT BRN, F XLN, PR POR, NSFO, SUB CHLKY IN PT. FRESH CHRT IN PT. SH: GRY - RD - BLK.</p> <p style="text-align: center;">LKC 3644' (-981') ELOG 3643' (-980')</p> <p>LS: OFF WHT - GRY, SME BRN PCS, OOL PCS THRUOUT, NO VIS POR, SME PCS W/ PR PPT POR, NSFO, NO ODOR. SH: GRY - BLK - RD.</p> <p>LS: OFF WHT - GRY, VF XLN, DSE, SUB CHLKY IN PT, NO VIS POR - PR PPT POR, V RARE DEAD BLK STN IN PT, NSFO, NO ODOR.</p> <p>LS: OFF WHT - GRY, F XLN, DSE, PR PPT POR, NSFO, NO ODOR.</p> <p>ABUNDANT GRY & RD GUMMY CLAY. LS: AA.</p> <p>LS: GRY - TAN - BRN, F XLN, PR PPT POR, FEW PCS W/ PR INT XLN POR, DRK BRN SPOTTY STN IN PT, NSFO, NO ODOR. ABND RD GUMMY CLAY. SH: RD - GRY - BLK.</p> <p>LS: GRY - TAN - BRN, F XLN, PR PPT & INT XLN POR, FEW SMALL VUGS IN PT, BRN SPOTTY STN IN PT, 3-4 PCS W/ VSSFO ON BRK, NO ODOR. SH: AA.</p> <p>LS: GRY - TAN - BRN, PR POR, V RARE SPOTTY STN, NSFO, NO ODOR.</p> <p>LS: OFF WHT - TAN - GRY, F XLN, V DSE, PR PPT POR, SME W/ NO VIS POR, NSFO, NO ODOR.</p> <p>LS: OFF WHT - TAN - GRY, F XLN, DSE, PR PPT POR, SME PCS W/ NO VIS POR, NSFO, NO ODOR. SH: GRY - RD - BLK, GUMMY IN PT.</p> <p>LS: GRY - TAN - SME BRN, F XLN, PR PPT POR, SME PR INT XLN POR W/ PR SFO ON BRK, FR ODOR. SH: GRY - RD, GUMMY.</p> <p>LS: GRY - TAN, F XLN, DSE, PR PPT POR, SME PR INT XLN POR, V RARE BRN STN IN PT, NSFO, NO ODOR. SH: AA.</p>	<p>ANHYDRITE ELOG 2080' (+583')</p> <p>BASE ANHYDRITE ELOG 2102' (+561')</p> <p>MUD PROP. @ 3488' WT: 8.6# VIS: 64 WL: 6.4 CC: 3,100 LCM: 2#</p> <p>WT: 9.1# VIS: 65 LCM: 2#</p> <p>WT: 9.3# VIS: 51</p>



LS: OFF WHT - TAN - GRY, F XLN, DSE, OOL IN PT, PR - FR INT XLN POR, NSFO, NO ODOR. SH: GRY - RD - BLK.

LS: OFF WHT - TAN - GRY, F XLN, DSE, PR PPT POR, SUB CHLKY IN PT, IMBD PYR IN PT, RARE SPOTTY BRN STN IN PT, NSFO, V FAINT ODOR. SH: RD - BLK.

LS & SH: AA.

LS: OFF WHT - TAN - GRY, DSE, PR POR, NSFO, NO ODOR. SH: GRY - BLK - RD, BLOCKY.

SH: BLK - RD - GRY, BLOCKY. LS IN PT: OFF WHT - TAN - GRY, F XLN, DSE, DEAD BLK SPOTTY STN IN PT, NSFO, NO ODOR.

LS: GRY - DRK GRY, F XLN, DSE, PR - FR PPT & INT XLN POR, SME FR VUGGY POR IN PT, DRK BRN STN THRUOUT, VSSFO ON BRK, FR ODOR.

LS: OFF WHT - TAN - GRY, F XLN, DSE, PR - FR PPT & INT XLN POR, SPOTTY BRN STN & PR - FR SFO ON BRK, GD ODOR.

LS: OFF WHT - TAN - GRY, PR PPT & INT XLN POR, SPOTTY STN IN PT, VSSFO ON BRK, FR ODOR.

LS: TAN - GRY, F XLN, PR - FR PPT & INT XLN POR, BRN SPOTTY STN THRUOUT, VSSFO ON BRK, GD ODOR.

LS: TAN - GRY, F XLN, DSE, PR PPT & INT XLN POR, SME PCS W/ FR INT XLN POR AND RARE SMALL VUGGY POR, SPOTTY BRN STN IN PT W/ SSFO ON BRK, GD ODOR.

LS: GRY - TAN, PR PPT POR & SME PR INT XLN POR, BRN STN IN PT, VSSFO ON BRK IN FEW PCS, FR ODOR.

LS: AA. SH IN PT: GRY - RD - MAROON.

LS: GRY - TAN, F XLN, DSE, PR - FR INT XLN & VUGGY POR, BRN STN THRUOUT W/ SFO ON BRK, FR ODOR, SME PCS W/ PR PPT POR & NSFO.

SH: BLK, CARB, RD & GRY IN PT. LS: TAN - GRY, PR PPT POR, BRN STN IN PT, NSFO, V FAINT ODOR.

SH: GRY - RD - BLK, CARB. LS: TAN - BRN - GRY, F XLN, DSE, PR PPT POR, LT BRN STN IN PT, NSFO, V FAINT ODOR.

LS: GRY - TAN, F XLN, DSE, PR PPT & INT XLN POR, SME FR INT XLN POR, SPOTTY BRN STN, VSSFO ON BRK, FAINT ODOR.

LS: GRY, F XLN, DSE, FEW OOL PCS, PR - FR INT XLN POR W/ FEW SMALL VUGS, GD BRN STN IN PT & FR SFO & GAS BUB ON BRK, V GD ODOR.

LS: GRY, F XLN, DSE, PR PPT & INT XLN POR, BRN STN & VSSFO ON BRK, FAINT ODOR. SH: BLK, CARB.

ABND BLK, CARB SH. LS: GRY - TAN, F XLN, DSE, PR PPT POR, SME PR INT XLN POR, DRK BRN STN IN PT, NSFO, FAINT ODOR.

LS: OFF WHT - GRY, SUB CHLKY IN PT, F XLN, DSE, PR - FR PPT & INT XLN POR, BRN STN IN PT, 6-7 PCS W/ GD SHOW FREE OIL & GAS BUB ON BRK, FR ODOR.

BKC ELOG 3966' (-1303')

LS: OFF WHT - GRY, F XLN, DSE, PR PPT POR, SME W/ NO VIS POR, DRK BRN DEAD STN IN PT, NSFO, V FAINT ODOR. SH: GRY - RD.

LS: OFF WHT - GRY, F XLN, DSE, SUB CHLKY IN PT, OOL IN PT, PR PPT POR, SME NO VIS POR, DRK BRN STN IN PT, NSFO, NO ODOR. SH: AA.

LS: TAN - GRY, F XLN, DSE, CHLKY - SUB CHLKY, PR PPT POR, SME PR INT XLN POR, 2-3 PCS W/ BRN STN, NSFO, NO ODOR. SH: GRY - RD.

ABUNDANT GRY, GUMMY CLAY. SH: GRY - RD.

GRY GUMMY CLAY.

GUMMY CLAY: GRY. LS IN PT: GRY, F XLN, NS.

ABND SH: GRY - BLK - RD, GUMMY CLAY IN PT. LS: GRY - TAN, F XLN, DSE, PR POR, RARE SPOTTY BRN STN IN FEW PCS, NSFO, NO ODOR.

LS: GRY - TAN, F XLN, DSE, PR PPT POR, SME PR INT XLN POR, 3-4 PCS W/ LT BRN SPOTTY STN, NSFO, NO ODOR. SH: GRY - RD, SFT, GUMMY IN PT.

LS: AA, V FAINT ODOR. SH: AA.

LS: GRY, F XLN, DSE, PR PPT & INT XLN POR, SME PCS W/ NO VIS POR, NSFO, NO ODOR. SH: GRY - RD, GUMMY CLAY THRUOUT.

LS: GRY, F XLN, DSE, PR PPT & INT XLN POR, CHLKY - SUB CHLKY IN PT, FEW PCS W/ RARE BRN STN, NSFO, NO ODOR. FRESH CHRT IN PT. SH: GRY - RD - BLK.

LS: GRY, F XLN, PR POR, NSFO, NO ODOR SH: GRY - RD, SFT.

LS: OFF WHT - GRY, F XLN, DSE, PR PPT POR, FEW PCS W/ PR INT XLN POR, DRK BRN STN IN PT, 2-3 PCS W/ PR SFO & FEW GAS BUB, NO ODOR.

LS: OFF WHT - GRY, PR - FR PPT & INT XLN POR, 2-3 PCS W/ BRN STN & VSSFO ON BRK, NO ODOR.

SH: BLK, CARB, GRY, RD

WT: 9.0#
VIS: 52
LCM: 1#

MUD PROP.
@ 3842'
WT: 9.3#
VIS: 50
WL: 8.0
CC: 4,000
LCM: 1#

DST #1
3779'-3895'
SEE HEADER
FOR RESULTS

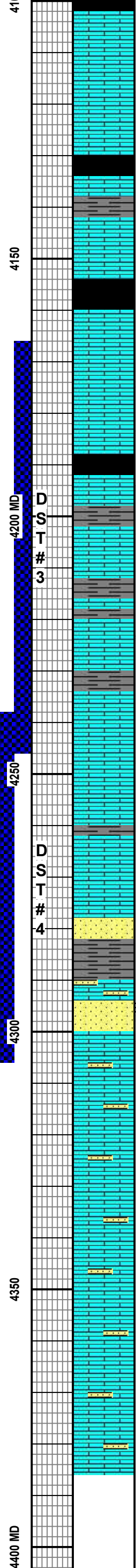
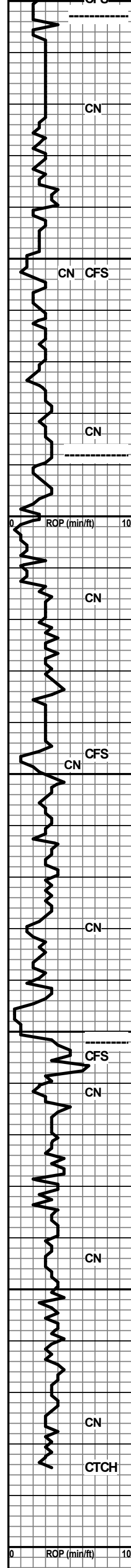
PIPE STRAP 2.6' SHORT

MUD PROP.
@ 3932'
WT: 9.4#
VIS: 52
WL: 8.0
CC: 5,000
LCM: 1#

DST #2
3888'-3980'
SEE HEADER
FOR RESULTS

**POOR SAMPLE
QUALITY**

WT: 9.5#
VIS: 55
LCM: 1#



PAWNEE ELOG 4103' (-1440')
 SH: BLK, CARB, GRY - RD.
 LS: GRY - OFF WHT, F XLN, DSE, PR PPT POR, FEW PCS W/ DRK BRN DEAD STN, NSFO, NO ODOR. FLUSH CHRT: GRY, FRESH, IMBD PYR.
 LS: GRY - OFF WHT, F XLN, DSE, PR PPT POR, SME PR INT XLN POR, SCAT LT BRN STN IN PT, 3-4 PCS W/ PR SFO & GAS BUB ON BRK, V FAINT ODOR.
 LS: GRY - OFF WHT, PR POR, DRK BRN - BLK DEAD STN IN PT, SME PCS W/ NO VIS POR, NSFO, NO ODOR. FRESH CHRT IN PT: GRY.
 FLUSH IN BLK, CARB SH. LS: GRY - OFF WHT, SUB CHLKY IN PT, PR PPT POR - NO VIS POR, 2-3 PCS W/ SMALL VUGS & DRK BRN DEAD STN, NSFO, NO ODOR.
 LS: GRY - OFF WHT, F XLN, DSE PR PPT & INT XLN POR, FEW PCS W/ DEAD BRN STN, NSFO, NO ODOR, FEW FOSS IN PT, PYR IN PT. SH: GRY - BLK, CARB.
 LS: GRY - BRN, F XLN, DSE, PR PPT POR, DRK BRN STN IN PT, NSFO, NO ODOR. FRESH CHRT IN PT.
 LS: GRY - BRN, OOL, NO VIS POR, SME W/ PR PPT POR, NSFO, NO ODOR. FRESH CHRT IN PT.
 LS: GRY - BRN, OOL THRUOUT, PR PPT & INT OOL POR, FR SFO & GAS BUB ON BRK, FAINT ODOR.
 LS: GRY - BRN - OFF WHT, PR PPT POR, SME NO VIS POR, DRK BRN STN IN PT, NSFO, NO ODOR.
CHER. SH ELOG 4188' (-1525')
 SH: BLK, CARB. LS: GRY - BRN, OOL IN PT, PR PPT POR & SME INT OOL POR, BRN STN IN PT, VSSFO ON BRK, NO ODOR.
 LS: GRY - BRN, F XLN, DSE, PR - FR PPT & INT XLN POR, FEW PCS W/ SMALL VUGS, LT BRN STN IN PT, PR SFO & GAS BUB ON BRK, FR ODOR. SH: GRY - BLK - ORG.
 ABND GRY, GUMMY CLAY. SH: GRY - BLK, CARB, ORG PCS IN PT. LS: GRY - BRN, F XLN, DSE, PR PPT & INT XLN POR, BRN SPOTTY STN IN PT, NSFO, NO ODOR, SLI CHLKY IN PT.
 LS: GRY - DRK GRY - BRN, F XLN, DSE, PR PPT POR, SME W/ NO VIS POR, DRK BRN SPOTTY STN IN PT, NSFO, NO ODOR.
 LS: BRN - DRK GRY, F XLN, DSE, PR PPT & INT XLN POR, FEW PCS W/ FR INT XLN POR AND FEW SMALL VUGS, GD DRK BRN SAT STN IN PT, SPOTTY STN THRUOUT, PR SFO & GAS BUB ON BRK, FR ODOR.
 LS: BRN - DRK GRY, F XLN, DSE, PR POR, DRK BRN STN IN PT, VSSFO ON BRK, FR ODOR.
 LS: BRN - DKR GRY - GRY, F XLN, DSE, PR PPT & INT XLN POR, SME FR INT XLN POR, BRN STN THRUOUT, VSSFO ON BRK IN FEW PCS, FAINT ODOR. SH: GRY - BLK - ORG.
 LS & SH: AA.
 FLUSH SND: WHT, VF - F GRN, SUB - WELL RNDED, WELL SORTED, SEMI FRI - FRI, RARE HEAVY BLK DEAD STN, MIC MAT IN PT, NSFO, NO ODOR. FRAMT LOOSE GRNS IN BOT OF TRAY.
 SND: WHT - GRY, VF - F GRN, SUB - WELL RND, SEMI FRI - FRI, 50% W/ PR - FR INT GRN POR & PR - FR SFO & GAS BUB ON BRK, 50% BARREN, SME DARK BLK DEAD STN IN PT.
MISS. 4302' (-1639')
ELOG 4302' (-1639')
 LS: GRY - DRK GRY, F XLN, DSE, PR PPT POR, SME PCS W/ DRK BRN SPOTTY STN, NSFO, NO ODOR.
 LS: GRY - OFF WHT, SNDY THRUOUT, NSFO, NO ODOR. SND: GRY, NS.
 LS: GRY - OFF WHT, F XLN, DSE, PR PPT POR, SNDY, NSFO, NO ODOR.
 LS: AA.
 LS: OFF WHT - GRY, F XLN, DSE, PR PPT POR, SME PR - FR INT XLN POR, SNDY THRUOUT, CHLKY THRUOUT, NSFO, NO ODOR. SH: GRY - BLK - ORG.
 LS: OFF WHT - GRY - TAN, F XLN, DSE, PR PPT & INT XLN POR, SNDY IN PT, SLI CHLKY IN PT, NSFO, NO ODOR.
 LS: OFF WHT - GRY, F XLN, DSE, FEW SNDY PCS, PR PPT POR, SME PCS W/ FR INT XLN POR, SLI CHLKY IN PT, NSFO, NO ODOR.
 LS: OFF WHT - GRY, F XLN, PR POR, NSFO, CHLKY IN PT, SME SNDY PCS, NSFO, NO ODOR.
RTD 4385' LTD 4387'

MUD PROP.
 @ 4121'
 WT: 9.6#
 VIS: 52
 WL: 9.6
 CC: 5,700
 LCM: 0.5#

DST #3
 4166'-4246'
 SEE HEADER FOR RESULTS

MUD PROP.
 @ 4246'
 WT: 9.4#
 VIS: 46
 WL: 8.8
 CC: 6,000
 LCM: 0.5#

DST #4
 4238'-4305'
 SEE HEADER FOR RESULTS

THIS SECTION CARRIED ABND LS:
 BRN - DRK GRY, F XLN, STN IN PT,
 NSFO. AS WELL AS SH: GRY - BLK - ORG - RD.

VERY POOR SAMPLE
 QUALITY**SAMPLES CARRYING ABND
 AMTS OF SH: GRY - BLK - ORG - RD

MUD PROP.
 @ 4305'
 WT: 9.6#
 VIS: 58
 WL: 9.6
 CC: 6,200
 LCM: 0.5#

SAMPLES
 CLEANED UP

MUD PROP.
 @ 4385'
 WT: 9.6#
 VIS: 57
 WL: 8.0
 CC: 4,700
 LCM: 1#

