



**COMPENSATED  
DENSITY/NEUTRON  
PE LOG**

Company TRANS PACIFIC OIL CORPORATION  
 Well KREBS P #3  
 Field UNNAMED  
 County LOGAN State KANSAS

Location: API #: 15-109-21661-0000  
 2310' FSL & 2310' FEL  
 NW - NW - SE  
 SEC 29 TWP 14S RGE 32W  
 Permanent Datum GROUND LEVEL Elevation 2655  
 Log Measured From KELLY BUSHING 8' A.G.L  
 Drilling Measured From KELLY BUSHING  
 Other Services DIL/MEL  
 Elevation K.B. 2663  
 D.F. 2661  
 G.L. 2655

Date	1/4/23		
Run Number	ONE		
Depth Driller	4385		
Depth Logger	4387		
Bottom Logged Interval	4363		
Top Log Interval	3300		
Casing Driller	8 5/8 @ 221'		
Casing Logger	221		
Bit Size	7 7/8		
Type Fluid in Hole	CHEMICAL MUD	CHLORIDES 4.700 PPM	
Density / Viscosity	9.6/57		
pH / Fluid Loss	10.0/8.0		
Source of Sample	FLOWLINE		
Rm @ Meas. Temp	1.10 @ 72F		
Rmt @ Meas. Temp	.825 @ 72F		
Rmc @ Meas. Temp	1.32 @ 72F		
Source of Rmf / Rmc	MEASUREMENT		
Rm @ BHT	.665 @ 119F		
Time Circulation Stopped	2 HOURS		
Time Logger on Bottom	12:00 P.M.		
Maximum Recorded Temperature	119F		
Equipment Number	3802		
Location	HAYS, KANSAS		
Recorded By	COLE ROBBEN		
Witnessed By	NICK HIXON		

<<< Fold Here >>>

All interpretations are opinions based on inferences from electrical or other measurements and we cannot and do not guarantee the accuracy or correctness of any interpretation, and we shall not, except in the case of gross or willful negligence on our part, be liable or responsible for any loss, costs, damages, or expenses incurred or sustained by anyone resulting from any interpretation made by any of our officers, agents or employees. These interpretations are also subject to our general terms and conditions set out in our current Price Schedule.

**Comments**

THANK YOU FOR USING ELI WIRELINE SERVICES, HAYS, KS. ( 785 ) 628-6395

**DIRECTIONS:**

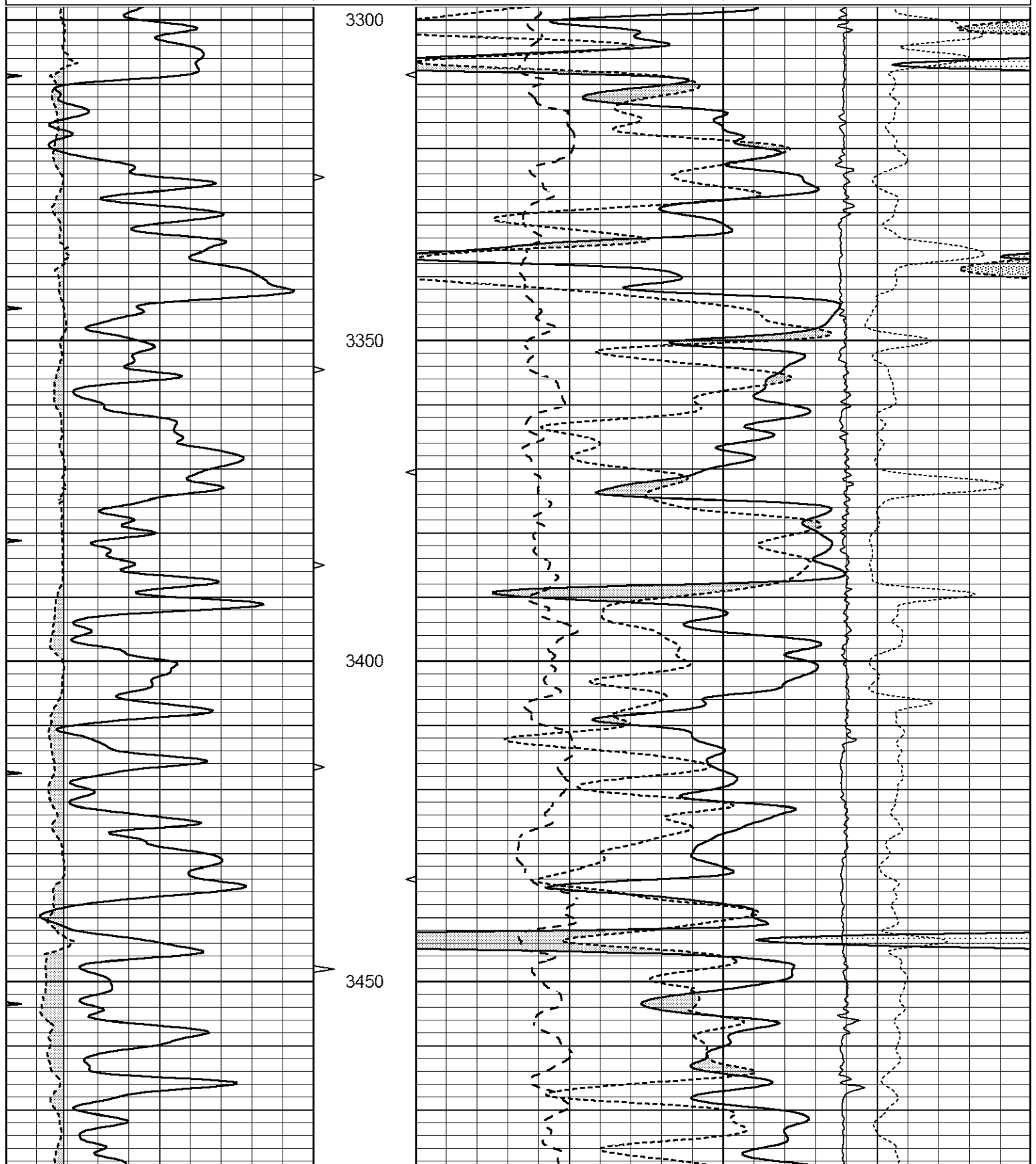
OAKLEY, KS SOUTH TO SALINE RIVER ROAD, WEST INTO THROUGH GATE AND ACROSS CATTLE GUARDS, THROUGH MIDDLE OF TANK BATTERIES, OVER ANOTHER CATTLE GUARD CONTINUE WEST

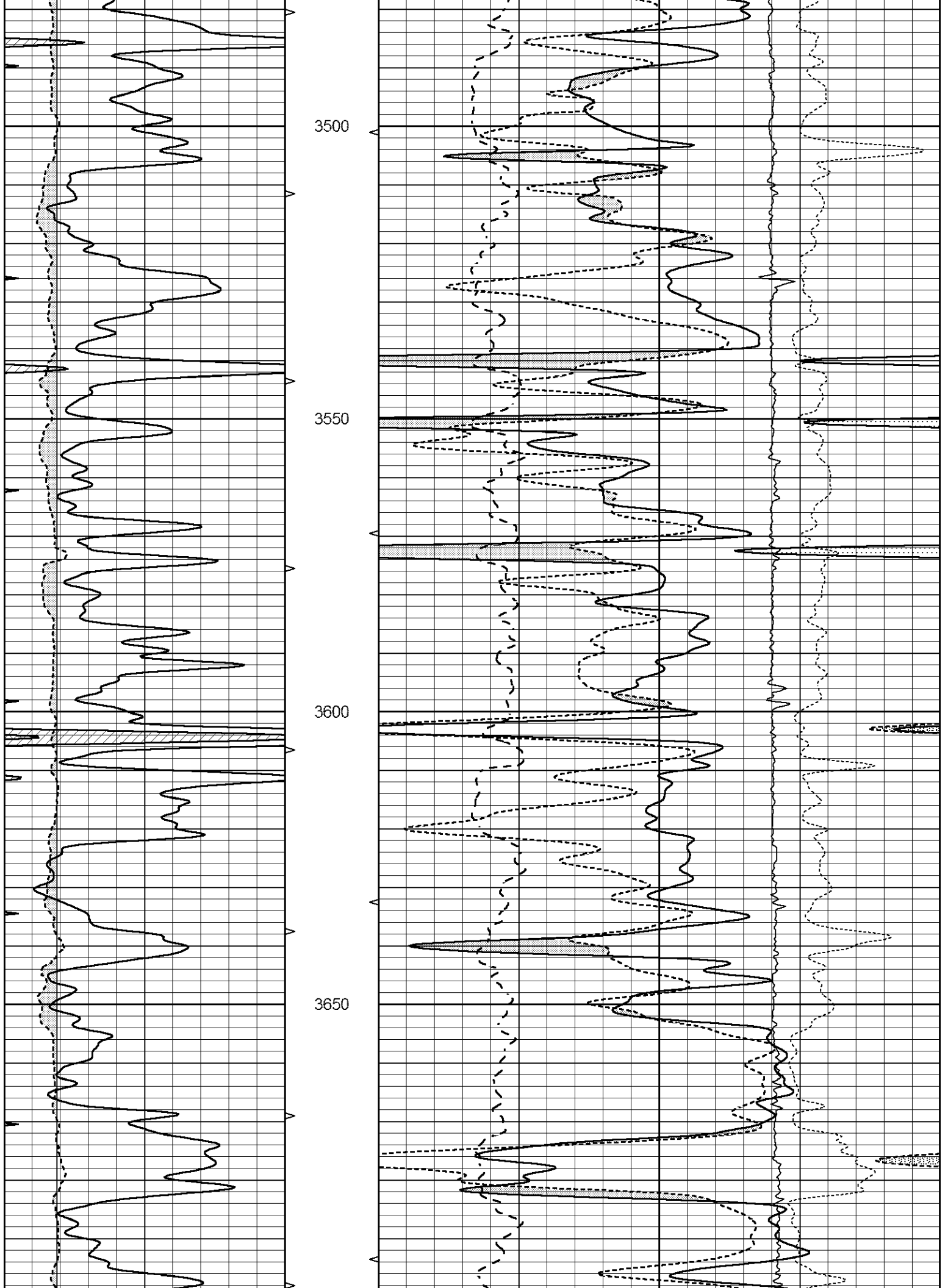


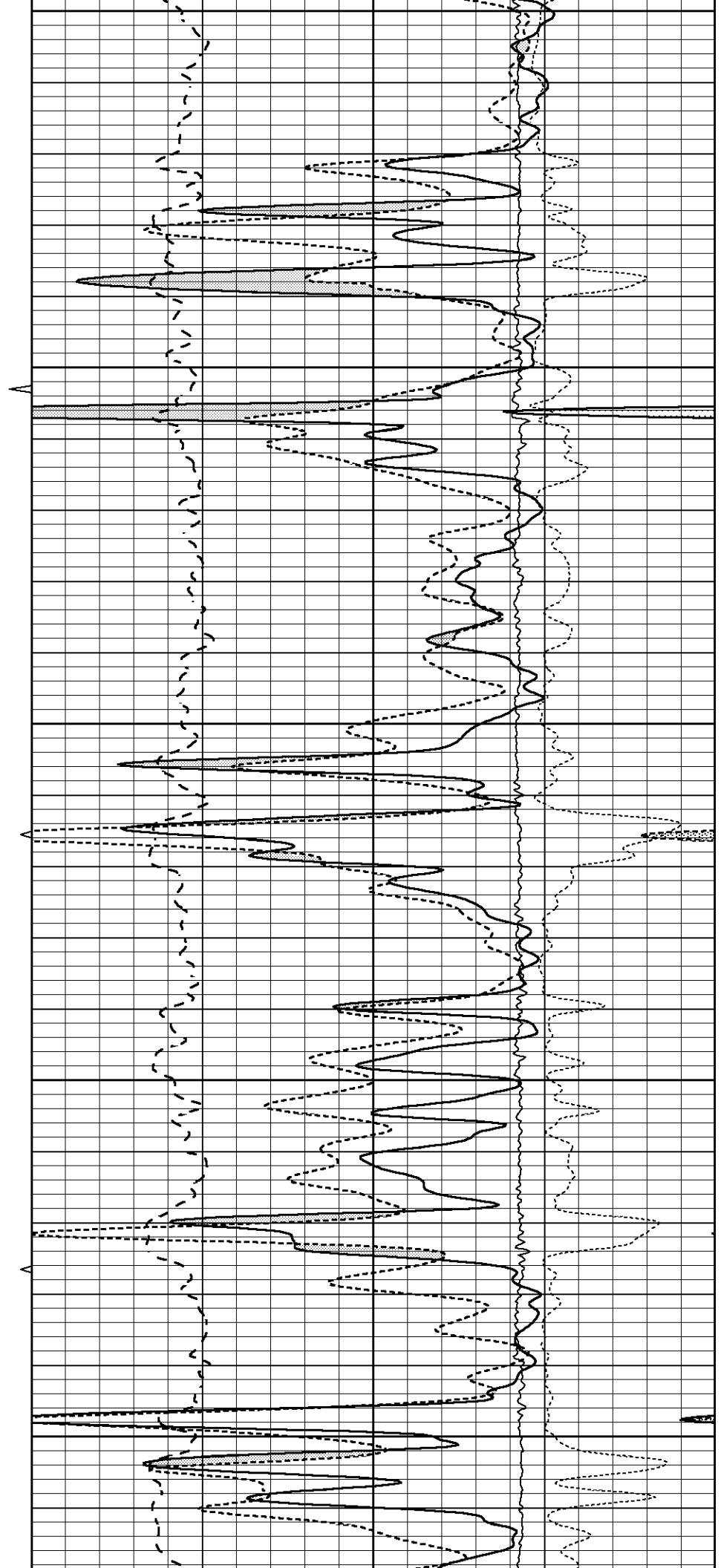
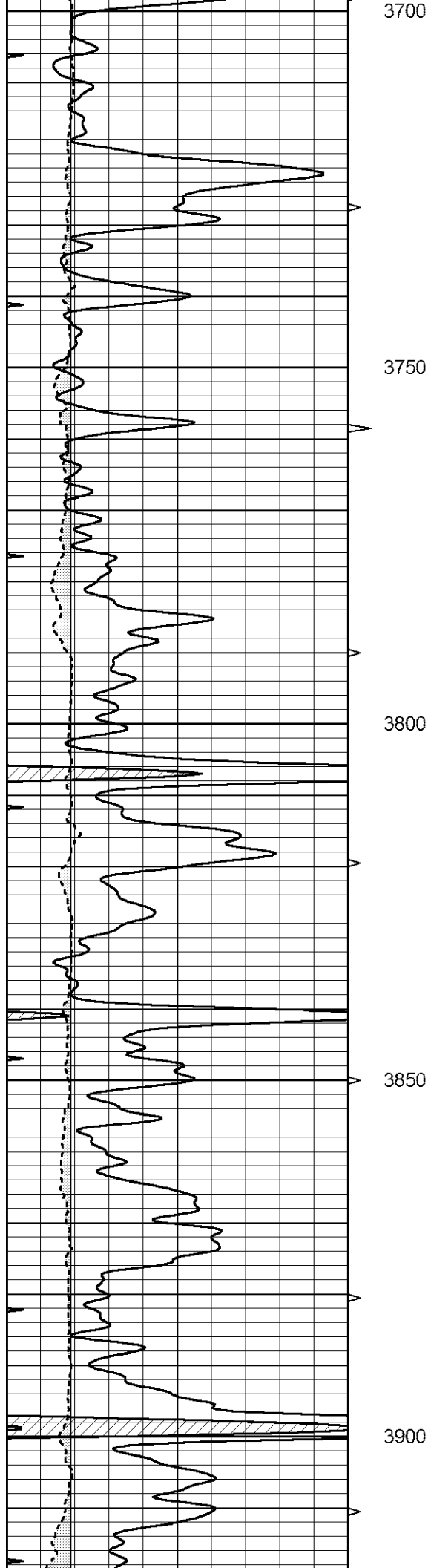
**MAIN SECTION**

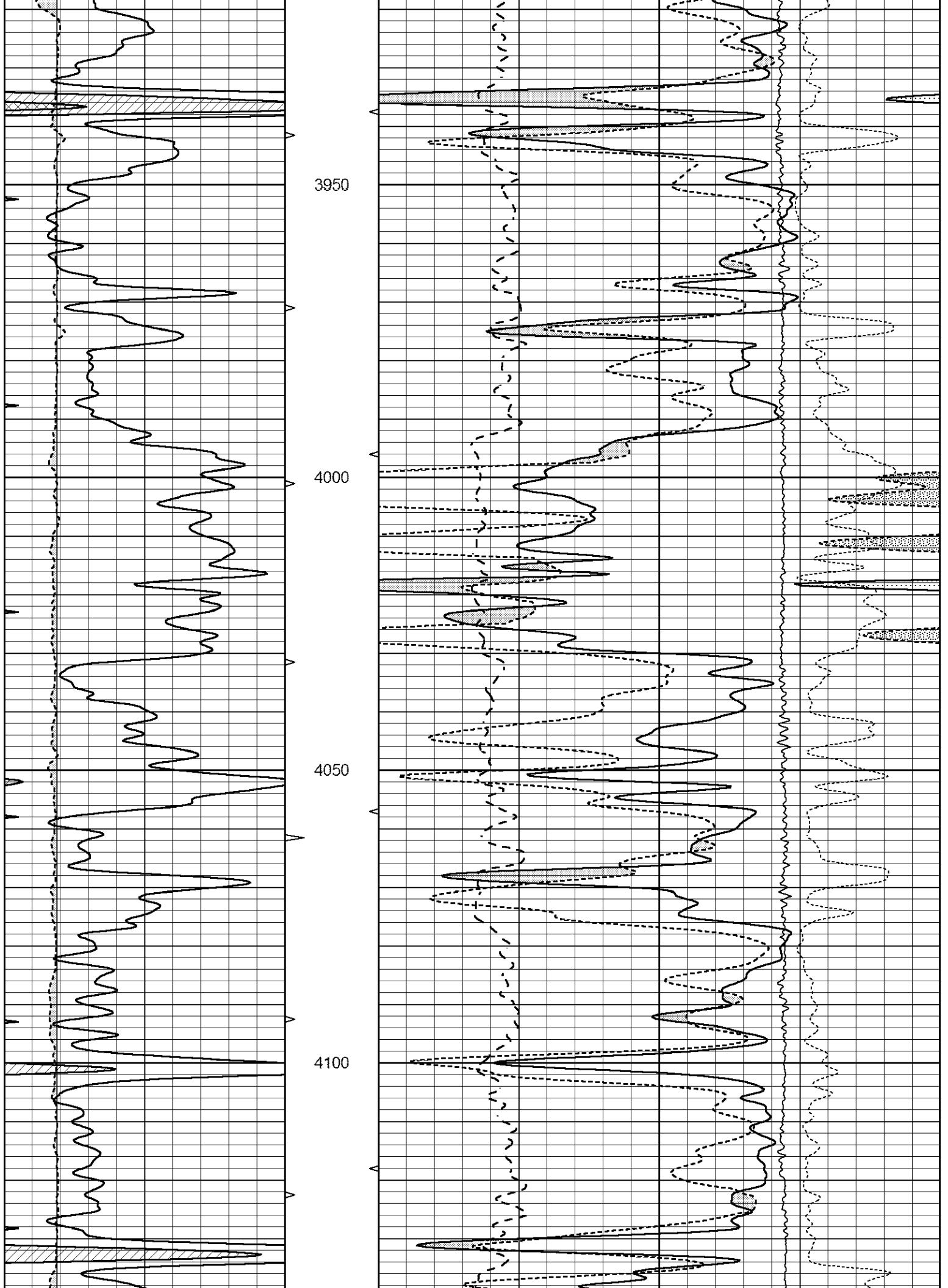
Database File 7399pe.db  
 Dataset Pathname pass3DD  
 Presentation Format \_ldt\_neu  
 Dataset Creation Wed Jan 04 14:06:54 2023  
 Charted by Depth in Feet scaled 1:240

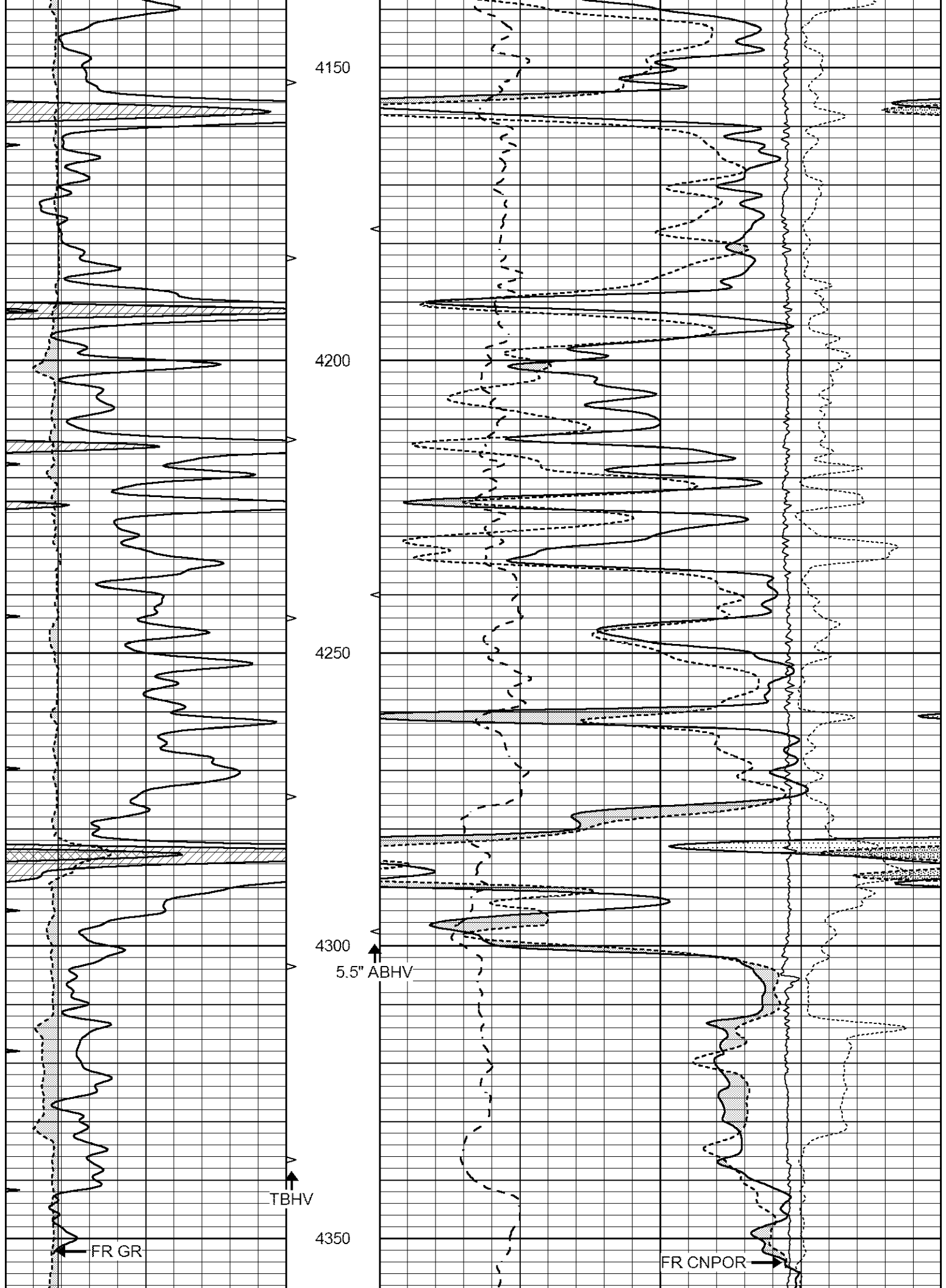
0	GAMMA RAY (GAPI)	150	ABHV	30	COMPENSATED DENSITY (pu)		-10
6	CALIPER (in)	16	10 (ft3)	0	COMPENSATED NEUTRON (pu)		-10
0	MINMK	20	TBHV	0	PE	10	-0.25 CORRECTION (g/cc) 0.25
			0 (ft3)	10		0	LTEN (lb) 5000

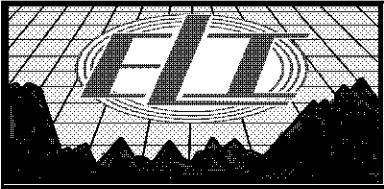
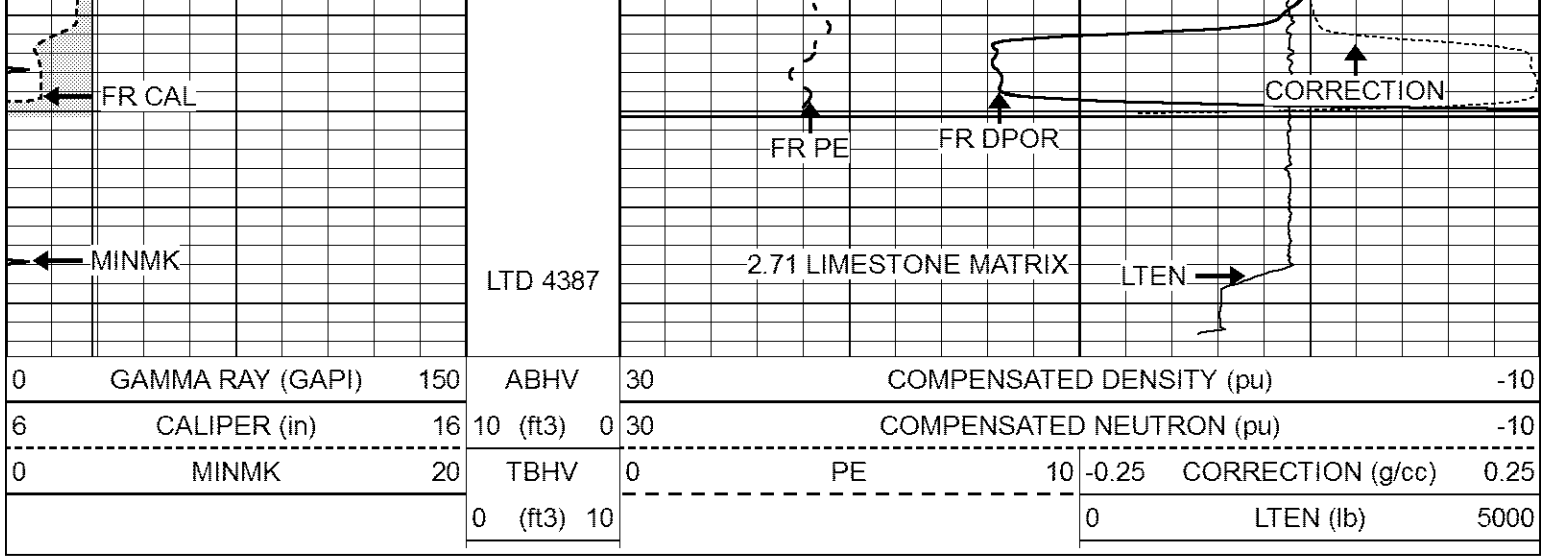








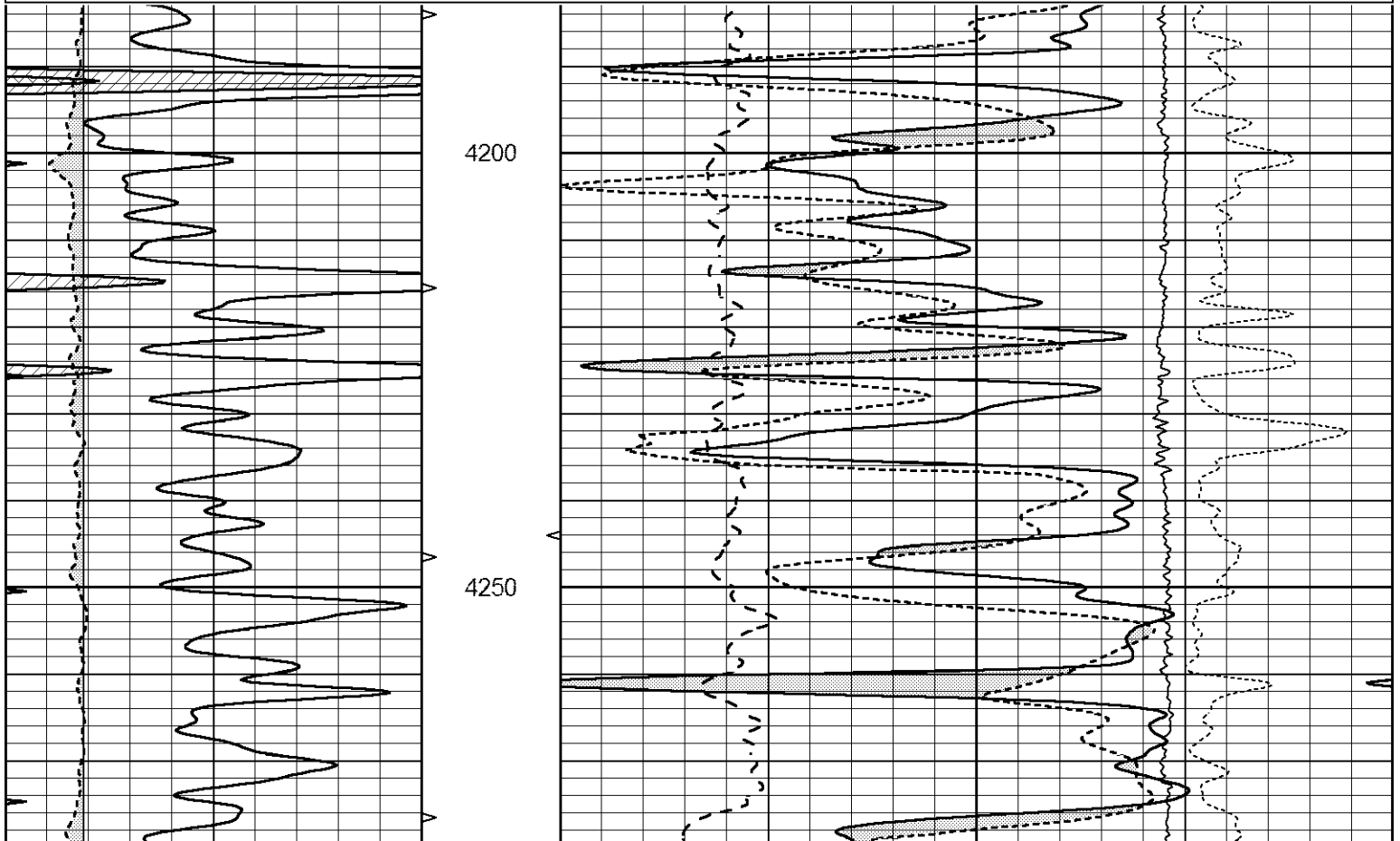


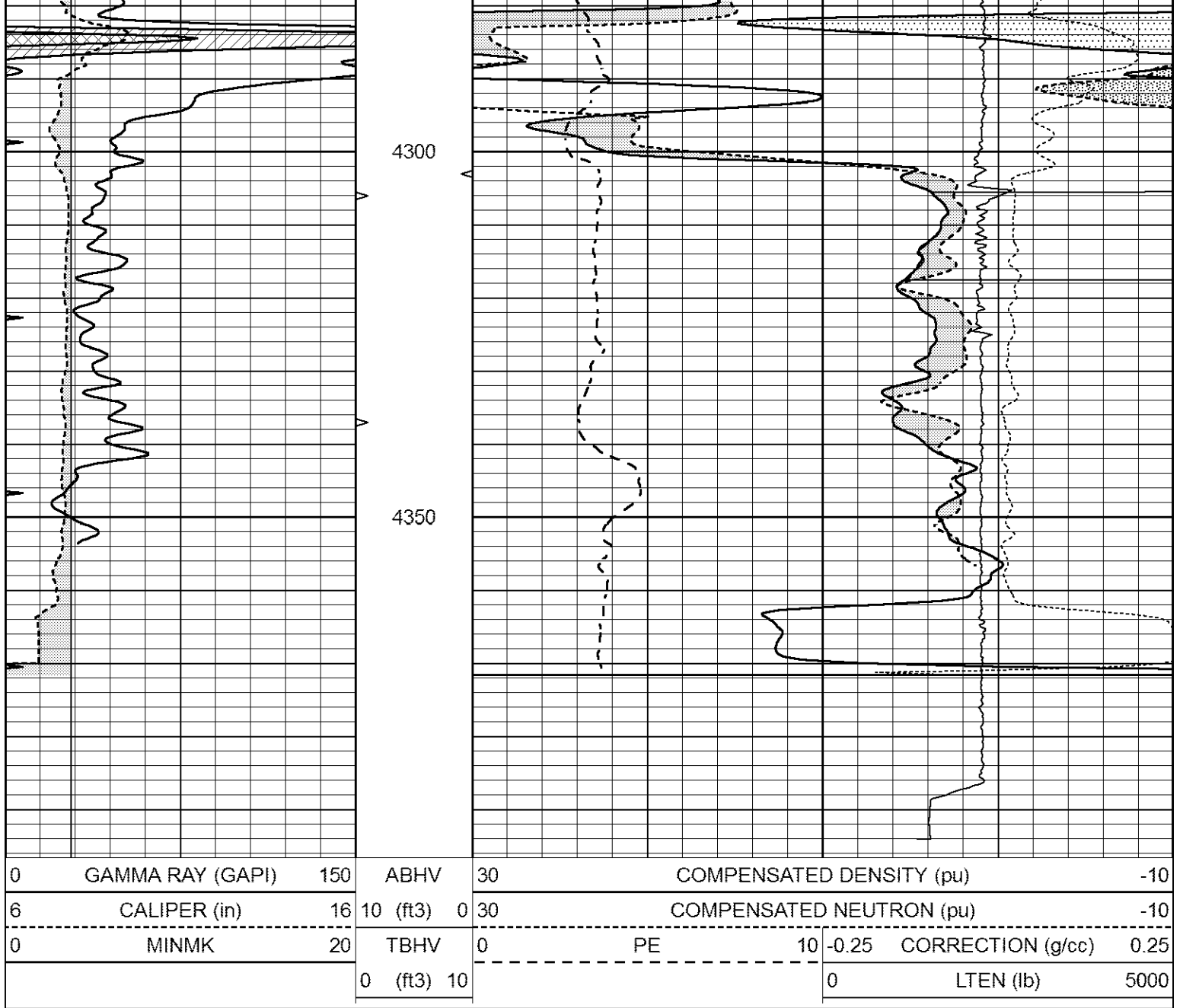


# REPEAT SECTION

Database File 7399pe.db  
 Dataset Pathname pass2RR  
 Presentation Format \_ldt\_neu  
 Dataset Creation Wed Jan 04 13:53:11 2023  
 Charted by Depth in Feet scaled 1:240

0	GAMMA RAY (GAPI)	150	ABHV	30	COMPENSATED DENSITY (pu)	-10
6	CALIPER (in)	16	10 (ft3)	0 30	COMPENSATED NEUTRON (pu)	-10
0	MINMK	20	TBHV	0	PE	10 -0.25 CORRECTION (g/cc) 0.25
			0 (ft3)	10		0 LTEN (lb) 5000





Calibration Report

Database File 7399pe.db  
 Dataset Pathname pass3DD  
 Dataset Creation Wed Jan 04 14:06:54 2023

Dual Induction Calibration Report

Serial-Model: FW1410-55-Probe  
 Surface Cal Performed: Thu Jun 30 01:48:00 2022  
 Downhole Cal Performed: Tue Feb 19 11:44:24 2019  
 After Survey Verification Performed: Tue Feb 19 11:44:27 2019

Surface Calibration

Loop:	Readings			References			Results	
	Air	Loop	V	Air	Loop	mmho/m	m	b
Deep	0.011	0.656	V	1.000	400.000	mmho/m	650.000	-3.000
Medium	-0.000	0.731	V	1.000	464.000	mmho/m	690.000	-10.500
Internal:	Zero	Cal		Zero	Cal		m	b
Deep	0.007	0.649	V	0.000	400.000	mmho/m	623.784	-4.595
Medium	0.001	0.710	V	0.000	464.000	mmho/m	687.821	-9.251

Downhole Calibration		Readings		References		Results		
	Zero	Cal		Zero	Cal		m'	b'
Deep	-0.824	395.917	mmho/m	-0.976	397.550	mmho/m	1.004	-0.149
Medium	3.565	471.327	mmho/m	3.468	471.590	mmho/m	1.001	-0.099
LL3		7.503	V		1500.000	Ohm-m		
		0.001	V		20.000	Ohm-m		
		-7.481	V		3745.000	mmho-m		

After Survey Verification		Readings		Targets		Results		
	Zero	Cal		Zero	Cal		m'	b'
Deep	0.000	0.000	mmho/m	-0.824	395.917	mmho/m	1.000	0.000
Medium	0.000	0.000	mmho/m	3.565	471.327	mmho/m	1.000	0.000
LL3		0.000	Ohm-m		1500.000	Ohm-m		
		0.000	Ohm-m		20.000	Ohm-m		
		0.000	mmho-m		3745.000	mmho-m		

Litho Density Calibration Report  
Serial: 005      Model: Litho\_Ver3

Master Calibration		Performed Fri May 13 13:54:56 2022			
	Background	Magnesium	Aluminum	Aluminum+Fe	
Window 1	1363.1	46477.8	11515.9	9589.9	cps
Window 2	1239.4	36488.4	9270.1	7998.9	cps
Window 3	1044.3	20488.1	5500.7	4913.3	cps
Window 4	315.7	358.7	321.5	319.5	cps
Long Space	0.0	35249.0	8030.7	6759.4	cps
Short Space	1.4	9675.7	6523.4	5391.9	cps
Rho		1.7100	2.5900	0.0000	g/cc
Pe		2.0000	2.7500	5.7900	
Rib Angle	: 45.1	Rib Slope	: 1.003	Density/Spine Ratio	: 0.575
Spine Angle	: 75.1	Spine Slope	: 3.752	Spine Intercept	: -24.0

Before Survey Verification		Performed Wed Dec 31 18:00:00 1969			
Window 1	0.0	0.0	0.0	0.0	cps
Window 2	0.0	0.0	0.0	0.0	cps
Window 3	0.0	0.0	0.0	0.0	cps
Window 4	0.0	0.0	0.0	0.0	cps
Long Space	0.0	0.0	0.0	0.0	cps
Short Space	0.0	0.0	0.0	0.0	cps
Measured Rho		0.0000	0.0000	0.0000	g/cc
Measured Correction		0.0000	0.0000	0.0000	g/cc
Measured Pe			0.0000	0.0000	

After Survey Verification		Performed Wed Dec 31 18:00:00 1969			
Window 1	0.0	0.0	0.0	0.0	cps
Window 2	0.0	0.0	0.0	0.0	cps
Window 3	0.0	0.0	0.0	0.0	cps
Window 4	0.0	0.0	0.0	0.0	cps
Long Space	0.0	0.0	0.0	0.0	cps
Short Space	0.0	0.0	0.0	0.0	cps

Measured Rho	0.0000	0.0000	0.0000	g/cc
Measured Correction	0.0000	0.0000	0.0000	g/cc
Measured Pe		0.0000	0.0000	

Compensated Neutron Calibration Report

Serial Number: 080621PMC  
Tool Model: NABORS

PRE-SURVEY VERIFICATION

Detector	Readings	Measured	Target
Short Space	cps		
Long Space	cps	pu	pu

POST-SURVEY VERIFICATION

Detector	Readings	Measured	Target
Short Space	cps		
Long Space	cps	pu	pu

Gamma Ray Calibration Report

Serial Number: 7  
Tool Model: Probe1  
Performed: Thu May 26 08:56:46 2022

Calibrator Value: 1.0 GAPI

Background Reading: 0.0 cps  
Calibrator Reading: 1.0 cps

Sensitivity: 0.5500 GAPI/cps