



DUAL INDUCTION LOG

Company TRANS PACIFIC OIL CORPORATION
 Well KREBS P #3
 Field UNNAMED
 County LOGAN State KANSAS

Location: API #: 15-109-21661-0000
 2310' FSL & 2310' FEL
 NW - NW - SE
 SEC 29 TWP 14S RGE 32W
 Permanent Datum GROUND LEVEL Elevation 2655
 Log Measured From KELLY BUSHING 8' A.G.L
 Drilling Measured From KELLY BUSHING
 Other Services
 CDL/CNL
 PE/MEI
 Elevation
 K.B. 2663
 D.F. 2661
 G.L. 2655

Date	1/4/23
Run Number	ONE
Depth Driller	4385
Depth Logger	4387
Bottom Logged Interval	4385
Top Log Interval	00
Casing Driller	8 5/8 @ 221'
Casing Logger	221
Bit Size	7 7/8
Type Fluid in Hole	CHEMICAL MUD
Density / Viscosity	9.6/57
PH / Fluid Loss	10.0/8.0
Source of Sample	FLOWLINE
Rm @ Meas. Temp	1.10 @ 72F
Rmt @ Meas. Temp	.825 @ 72F
Rmc @ Meas. Temp	1.32 @ 72F
Source of Rmf / Rmc	MEASUREMENT
Rm @ BHT	.665 @ 119F
Time Circulation Stopped	2 HOURS
Time Logger on Bottom	12:00 P.M.
Maximum Recorded Temperature	119F
Equipment Number	3802
Location	HAYS, KANSAS
Recorded By	COLE ROBBEN
Witnessed By	NICK HIXON

<<< Fold Here >>>

All interpretations are opinions based on inferences from electrical or other measurements and we cannot and do not guarantee the accuracy or correctness of any interpretation, and we shall not, except in the case of gross or willful negligence on our part, be liable or responsible for any loss, costs, damages, or expenses incurred or sustained by anyone resulting from any interpretation made by any of our officers, agents or employees. These interpretations are also subject to our general terms and conditions set out in our current Price Schedule.

Comments

THANK YOU FOR USING ELI WIRELINE SERVICES, HAYS, KS. (785) 628-6395

DIRECTIONS:

OAKLEY, KS SOUTH TO SALINE RIVER ROAD, WEST INTO THROUGH GATE AND ACROSS CATTLE GUARDS, THROUGH MIDDLE OF TANK BATTERIES, OVER ANOTHER CATTLE GUARD CONTINUE WEST

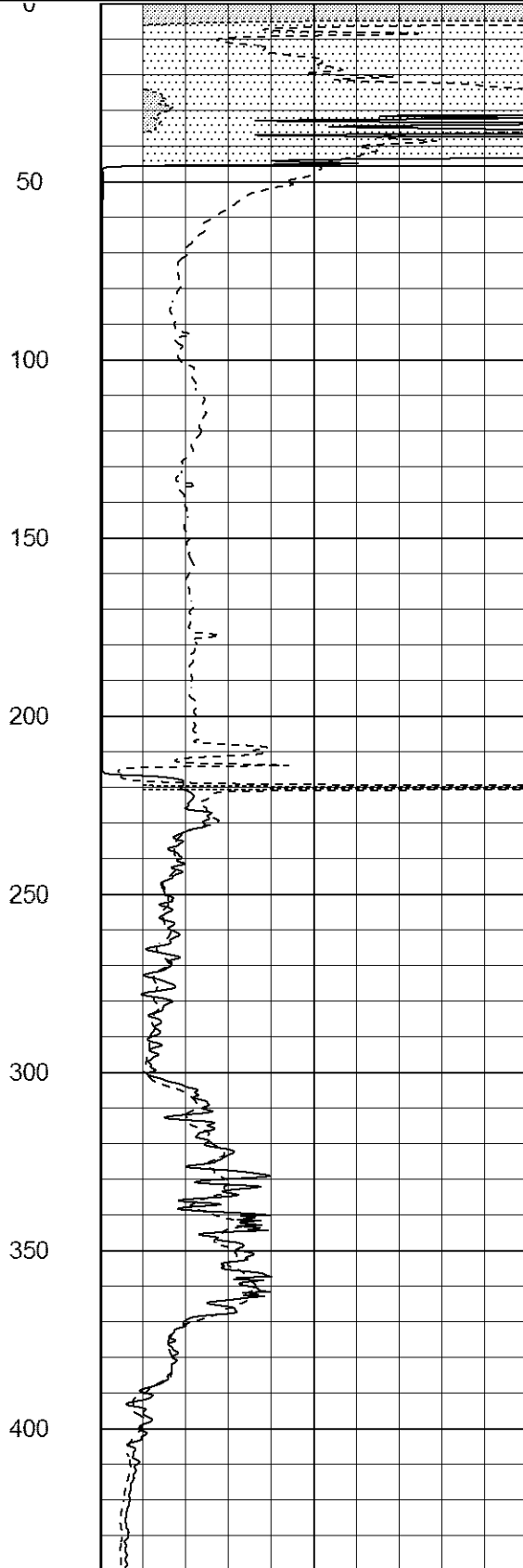
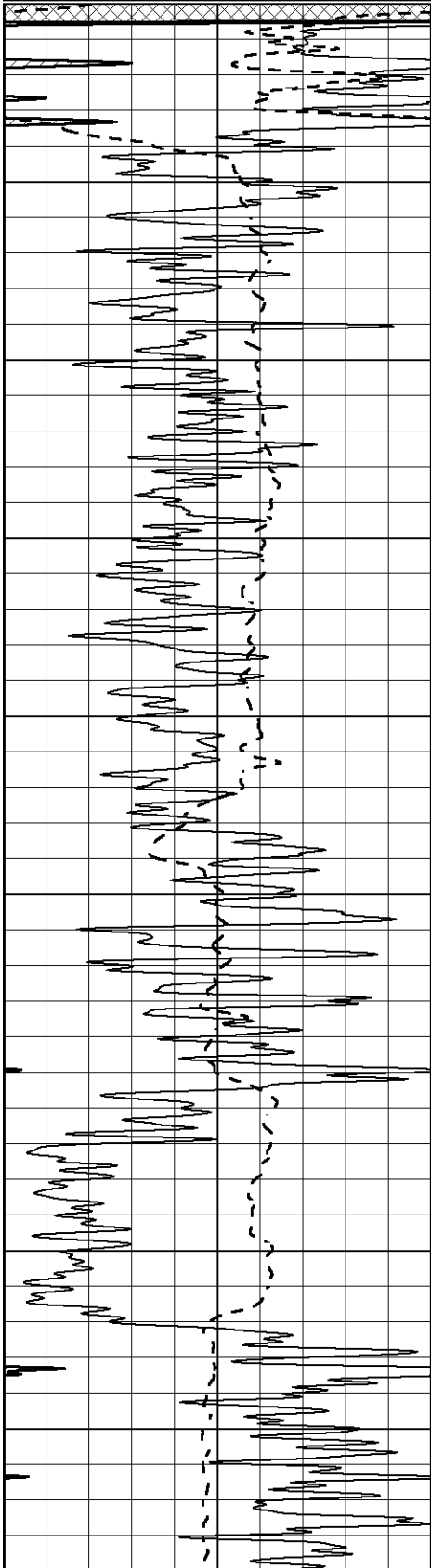


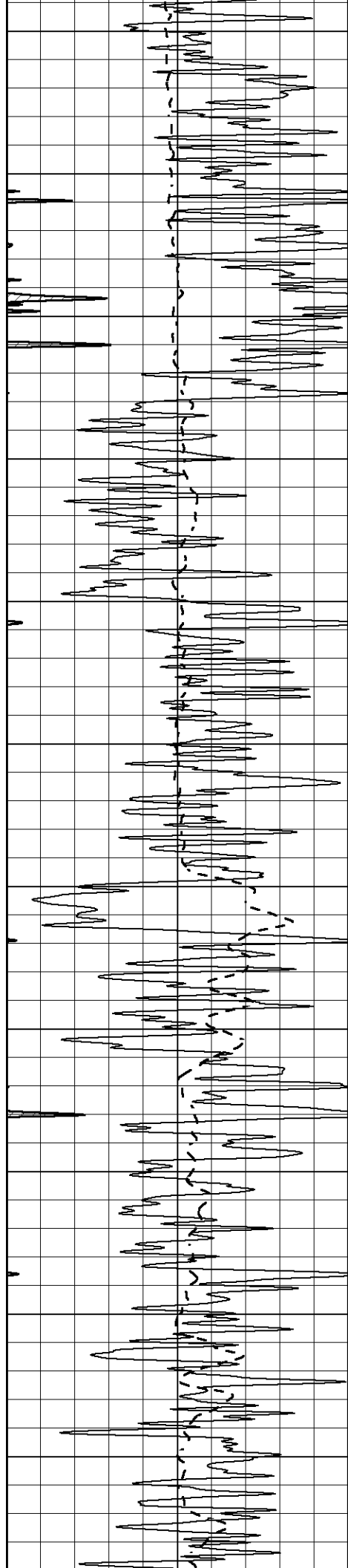
MAIN SECTION

Database File 7399pe.db
 Dataset Pathname pass3M
 Presentation Format _dil2
 Dataset Creation Wed Jan 04 13:33:35 2023
 Charted by Depth in Feet scaled 1:600

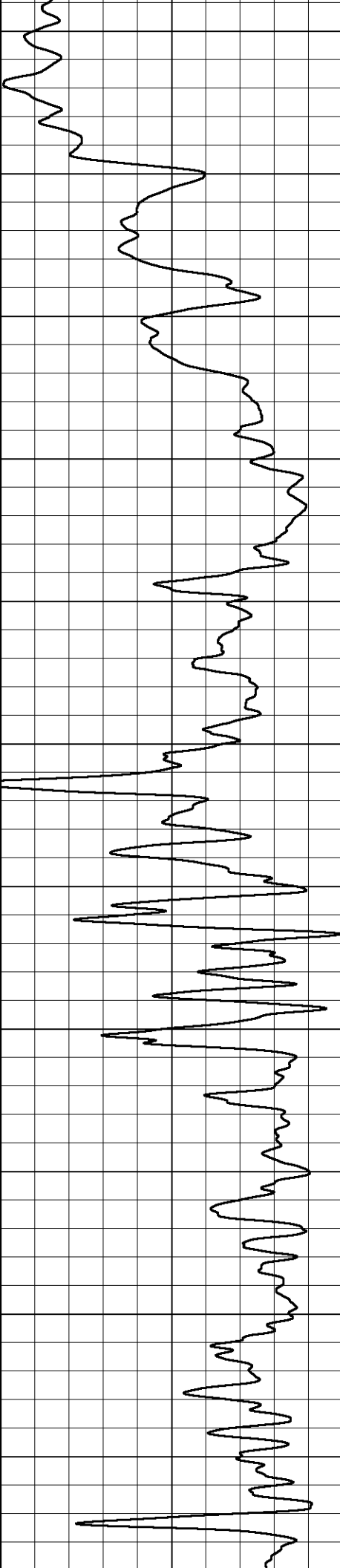
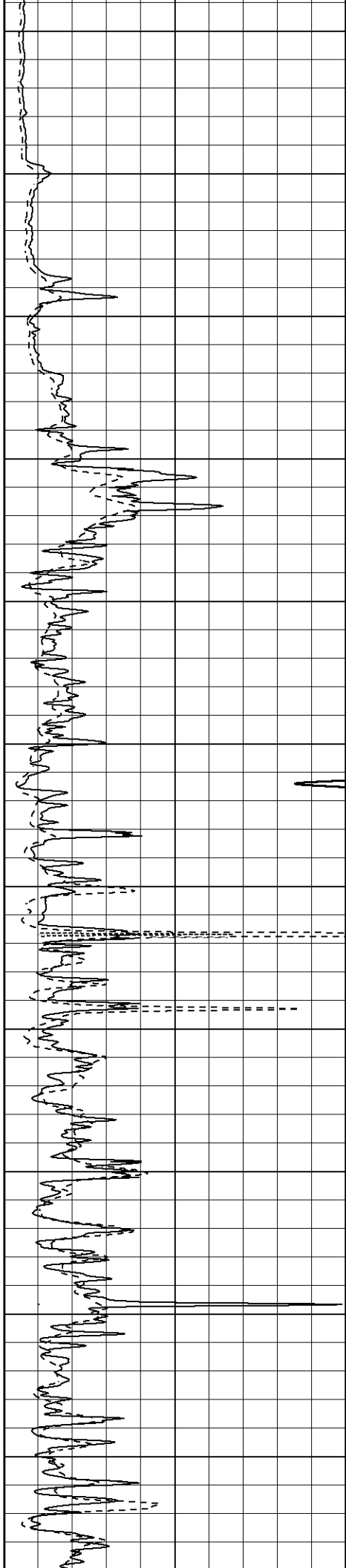
0 Gamma Ray (GAPI) 150
 -100 SP (mV) 100

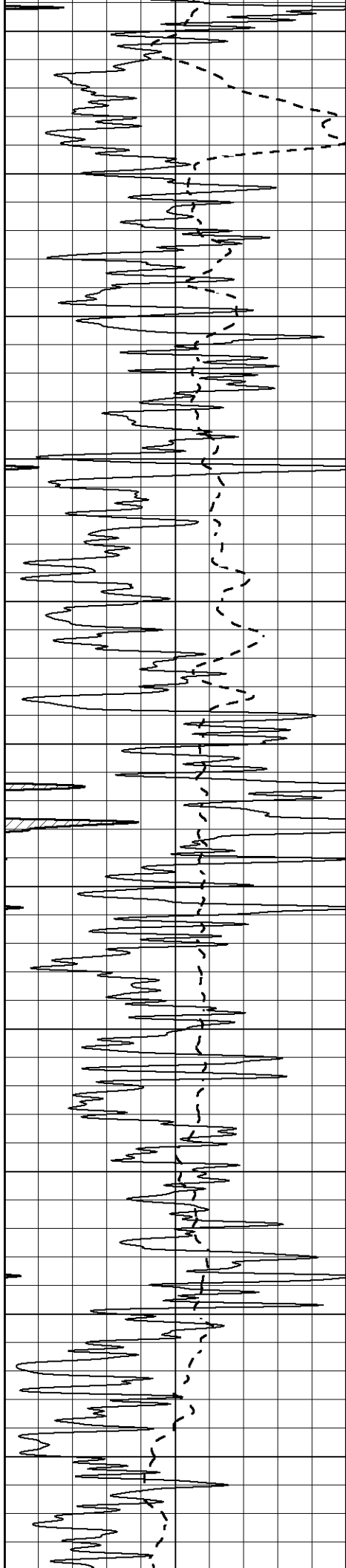
1000 CILD (mmho/m) 0
 0 RLL3 (Ohm-m) 50
 0 Deep Induction (Ohm-m) 50
 50 RILD X10 (Ohm-m) 500
 50 RLL3 X10 (Ohm-m) 500



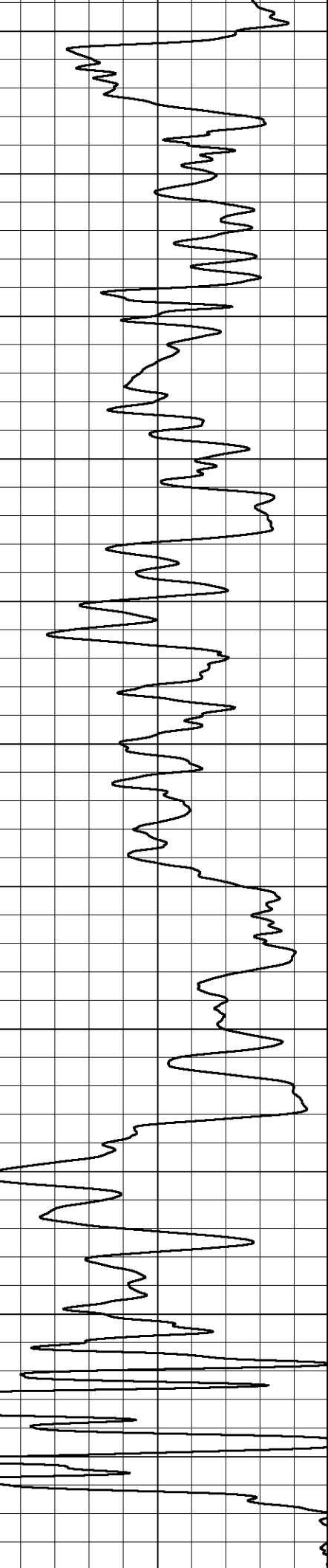
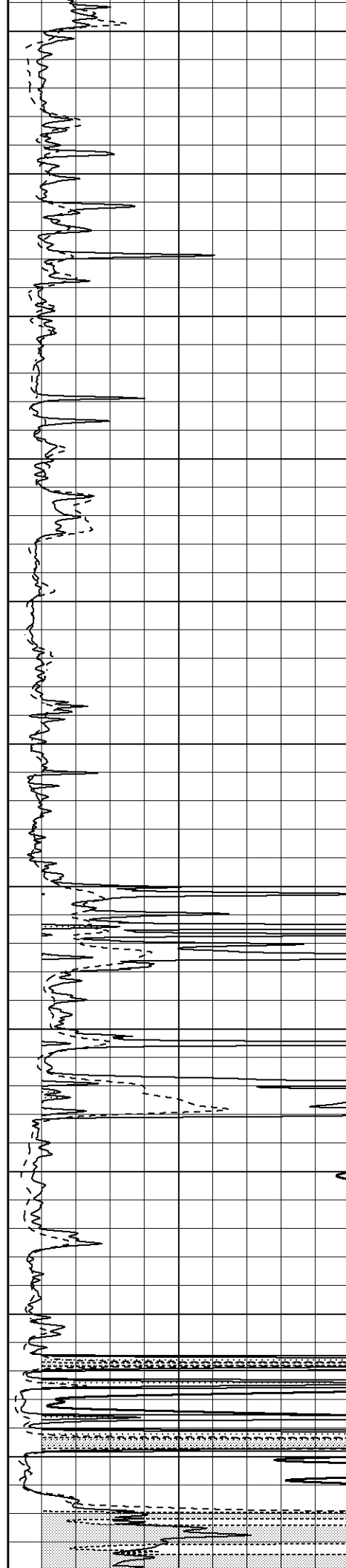


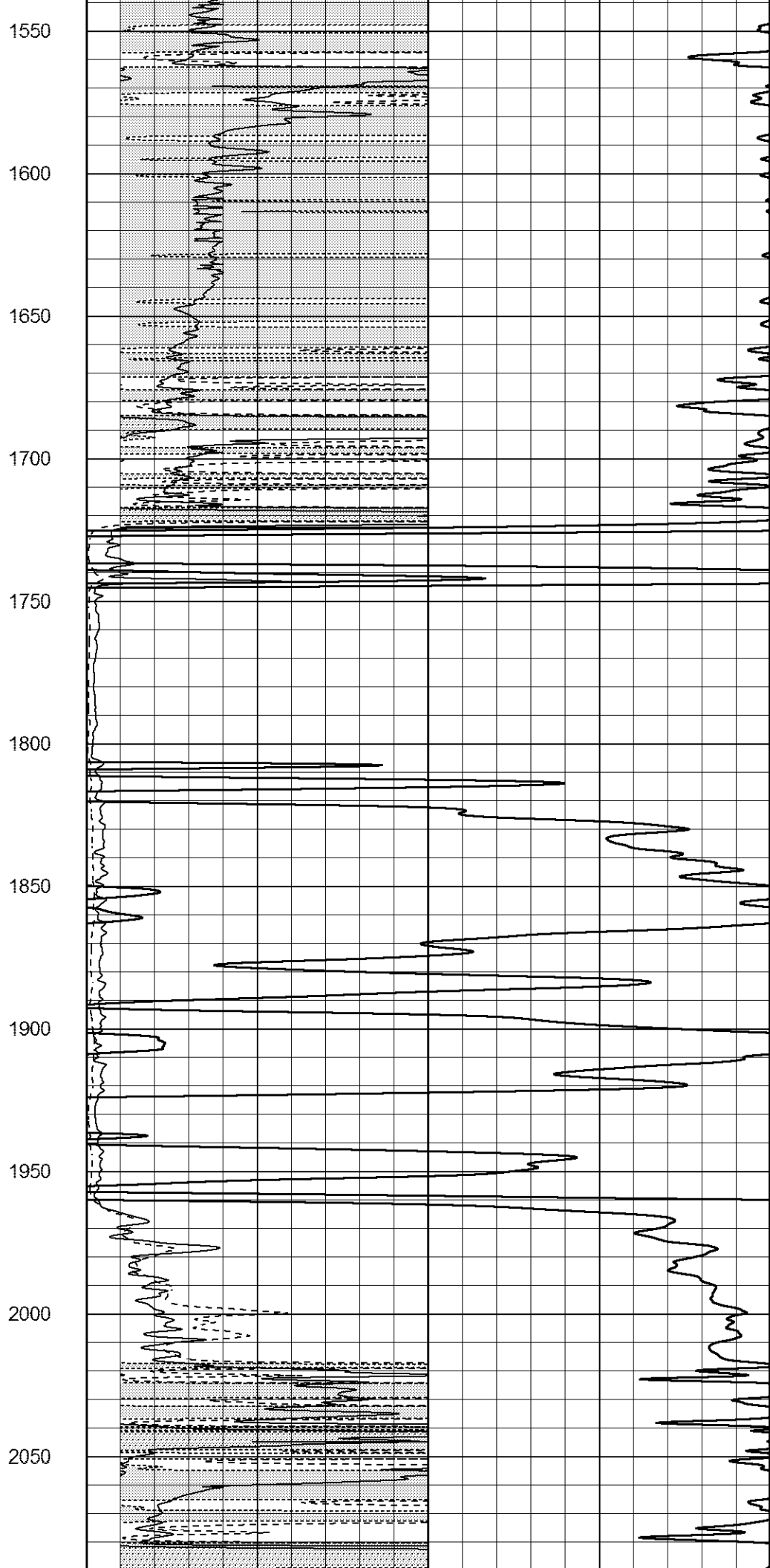
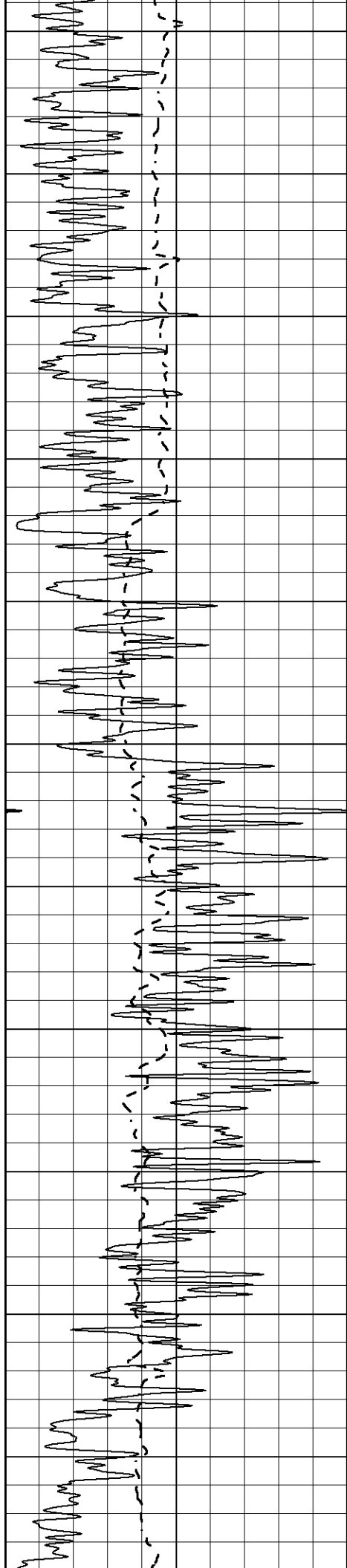
450
500
550
600
650
700
750
800
850
900
950

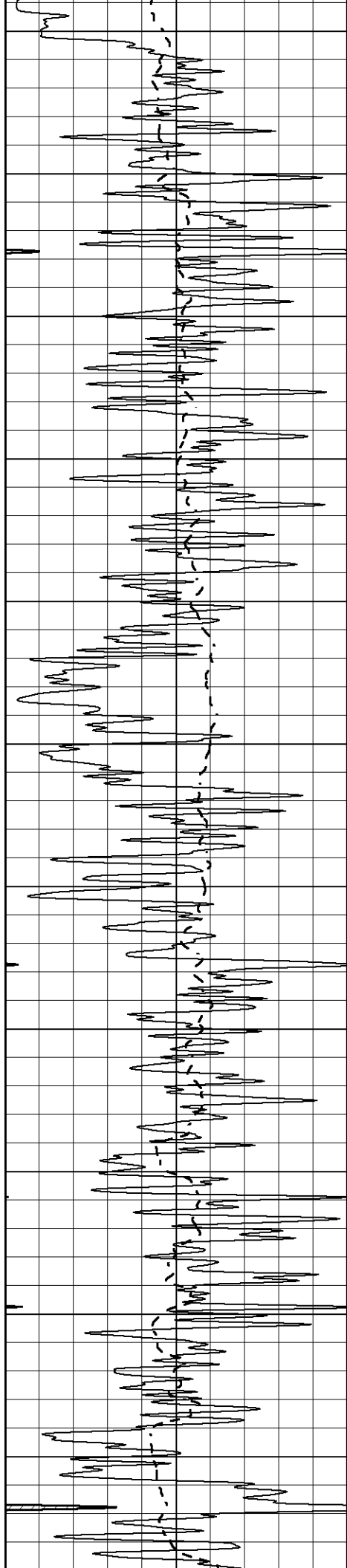




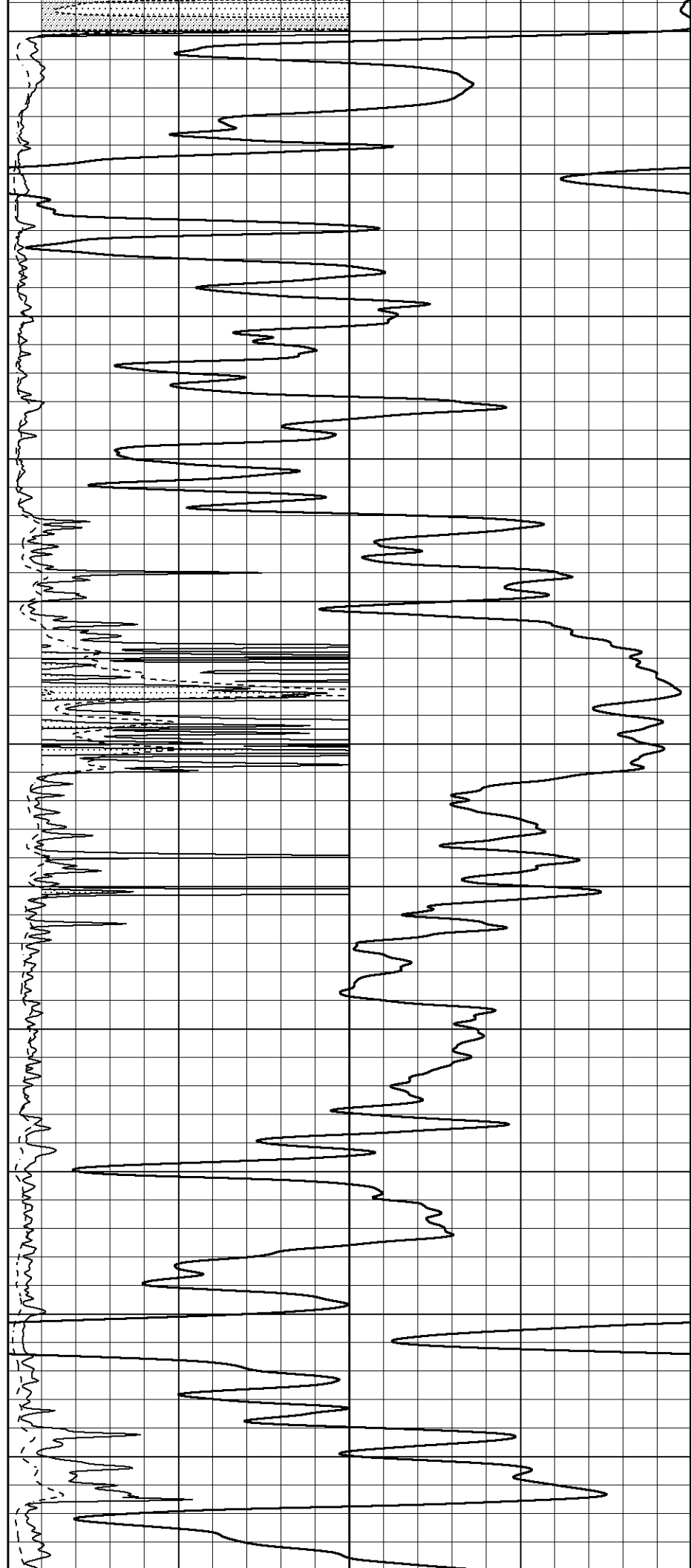
1000
1050
1100
1150
1200
1250
1300
1350
1400
1450
1500

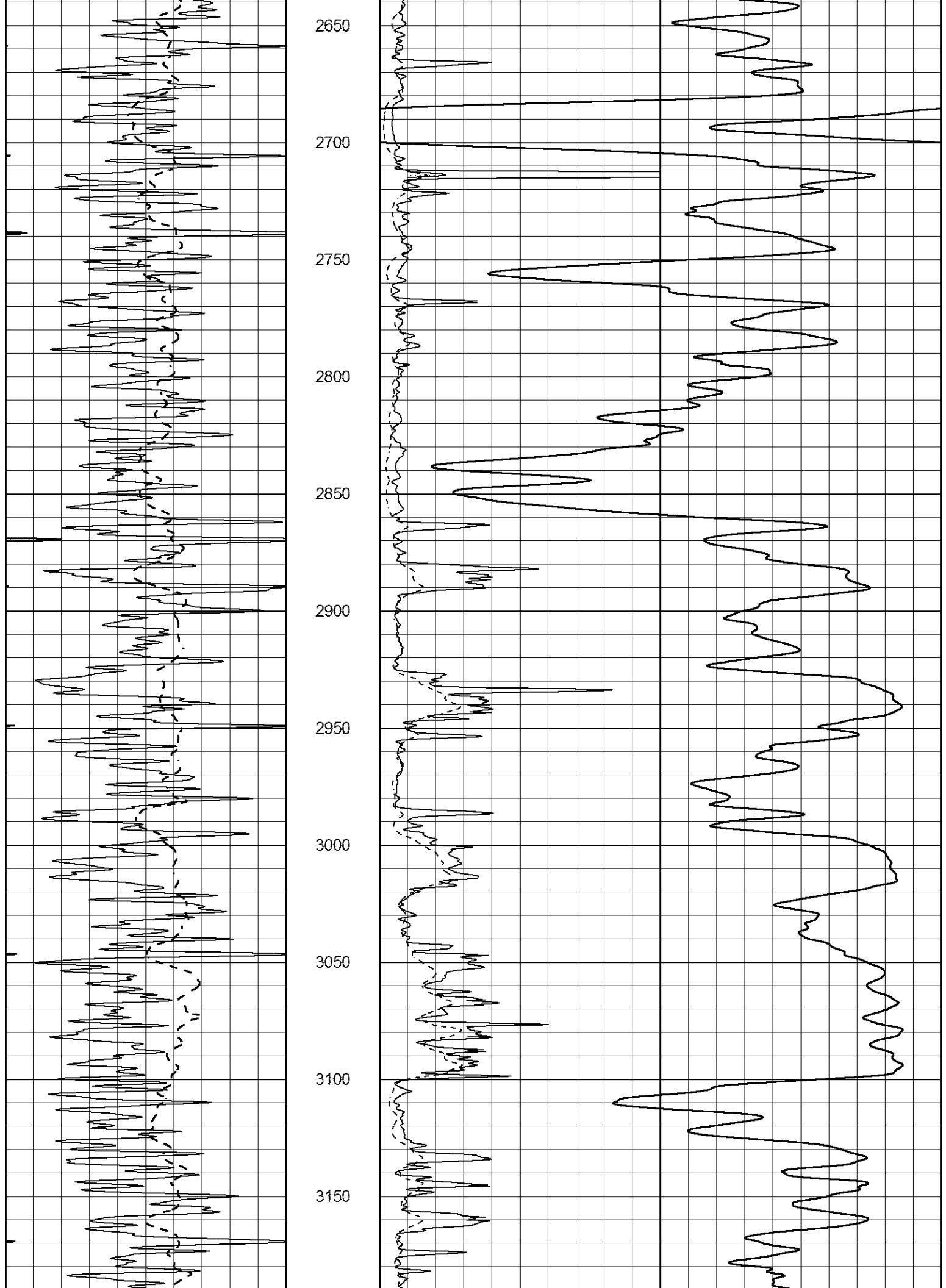


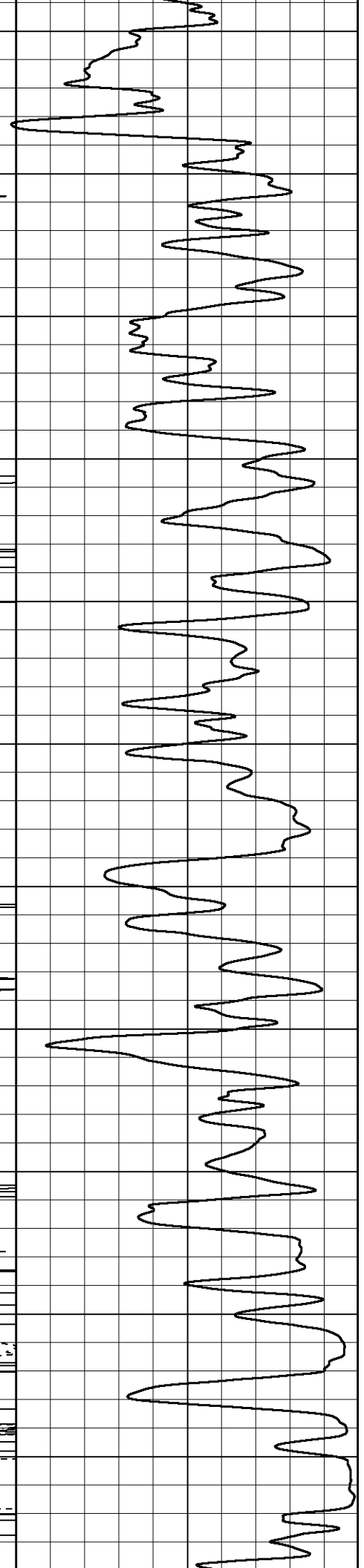
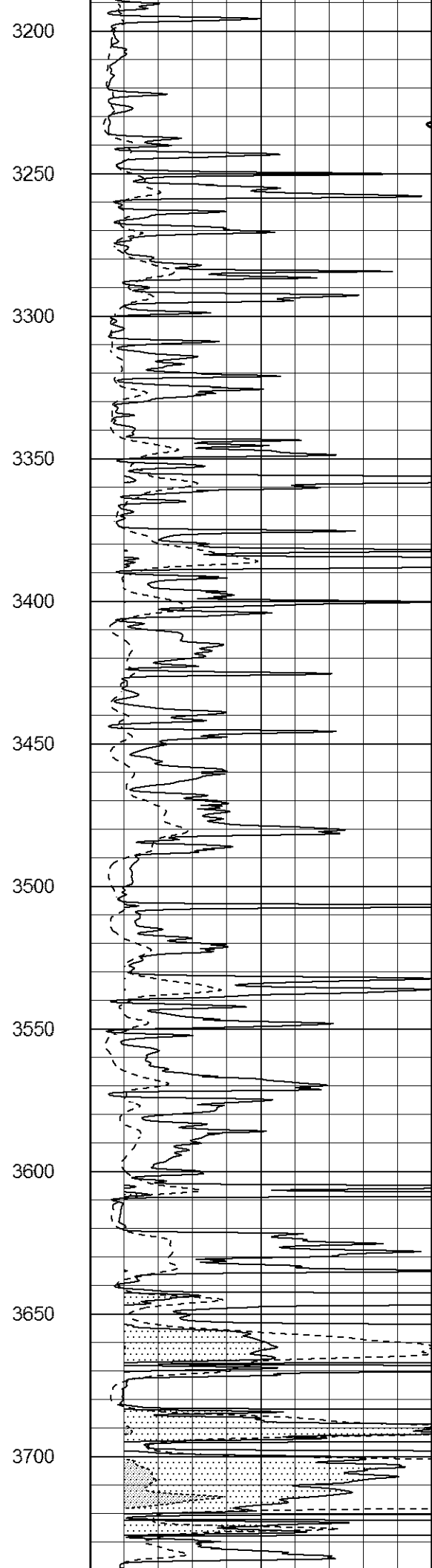
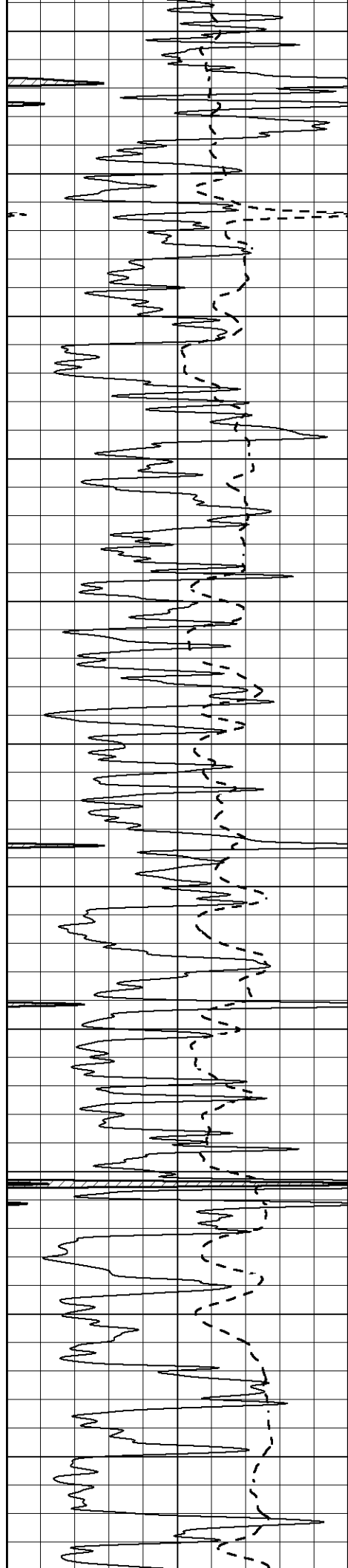


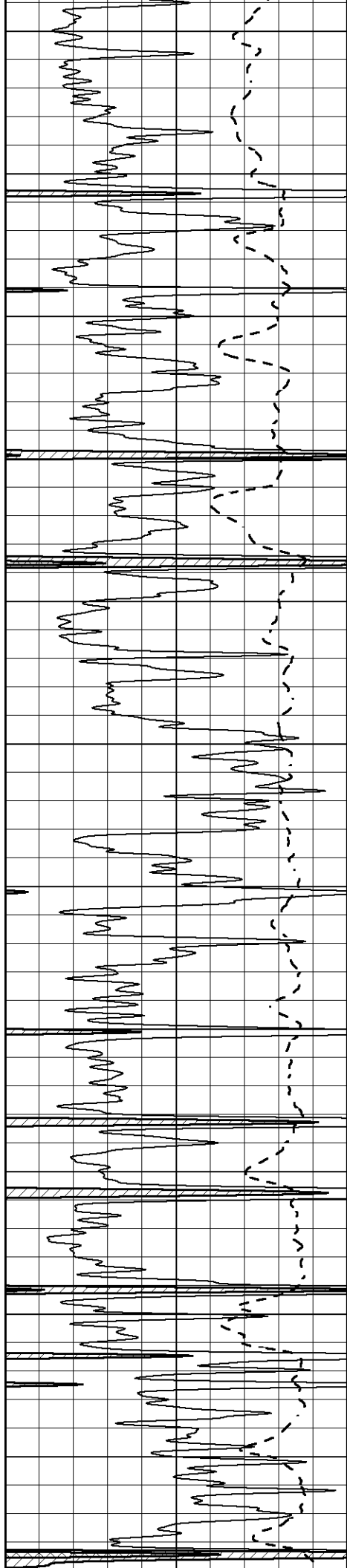


2100
2150
2200
2250
2300
2350
2400
2450
2500
2550
2600

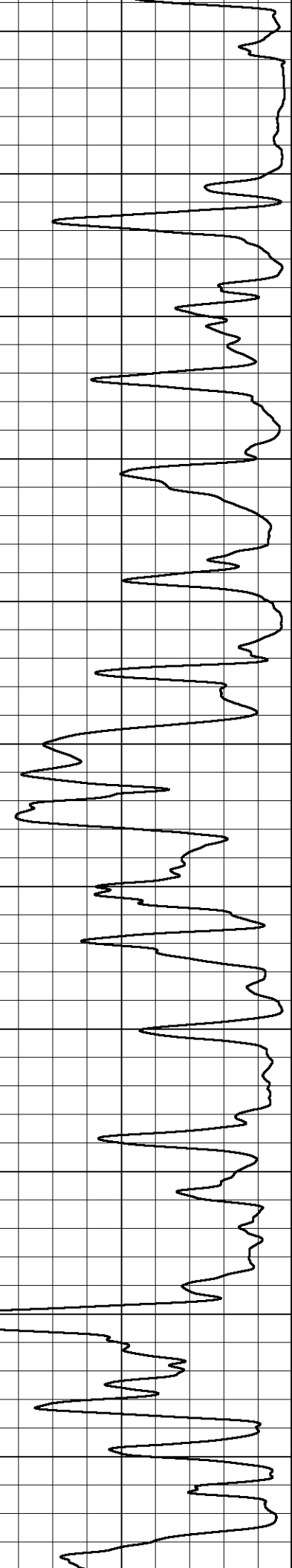
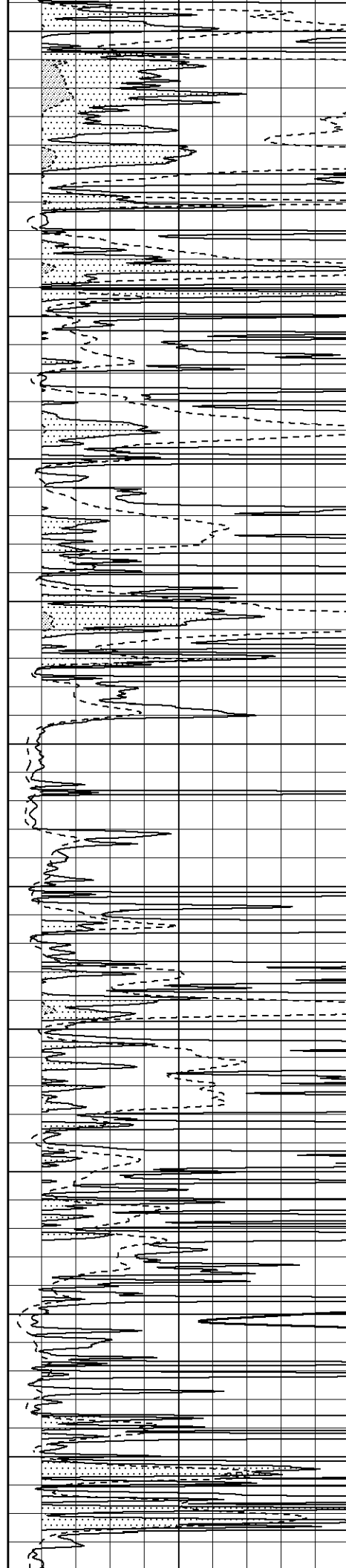


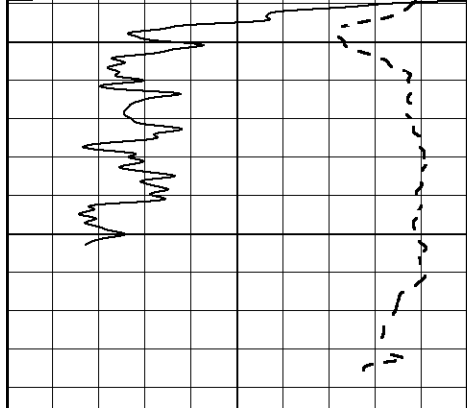






3750
3800
3850
3900
3950
4000
4050
4100
4150
4200
4250



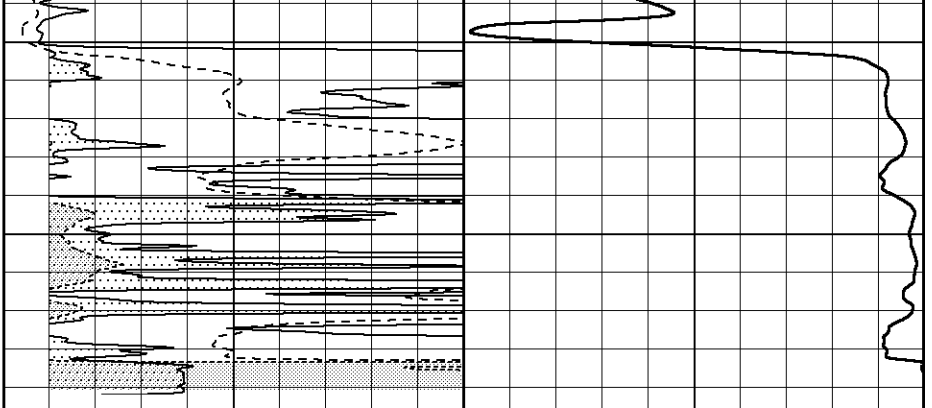


4300

4350

0 Gamma Ray (GAPI) 150

-100 SP (mV) 100



1000 CILD (mmho/m) 0

0 RLL3 (Ohm-m) 50

0 Deep Induction (Ohm-m) 50

50 RILD X10 (Ohm-m) 500

50 RLL3 X10 (Ohm-m) 500



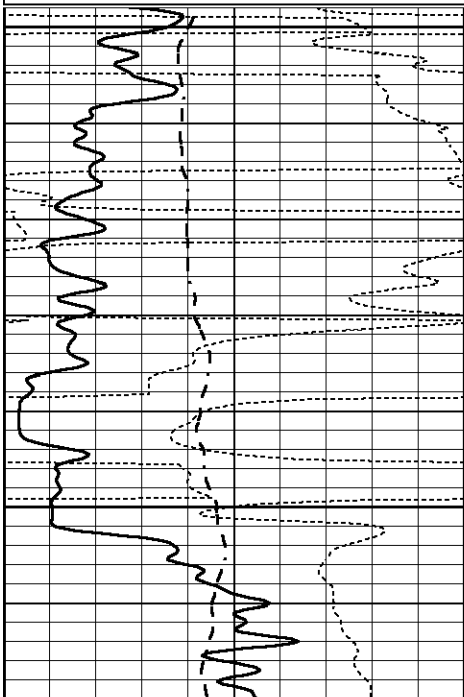
ANHYDRITE

Database File 7399pe.db
 Dataset Pathname pass3A
 Presentation Format _dil
 Dataset Creation Wed Jan 04 14:18:32 2023
 Charted by Depth in Feet scaled 1:240

0 GAMMA RAY (GAPI) 150

-100 SP (mV) 100

-250 Rxo/Rt 50



2050

2100

0 GAMMA RAY (GAPI) 150

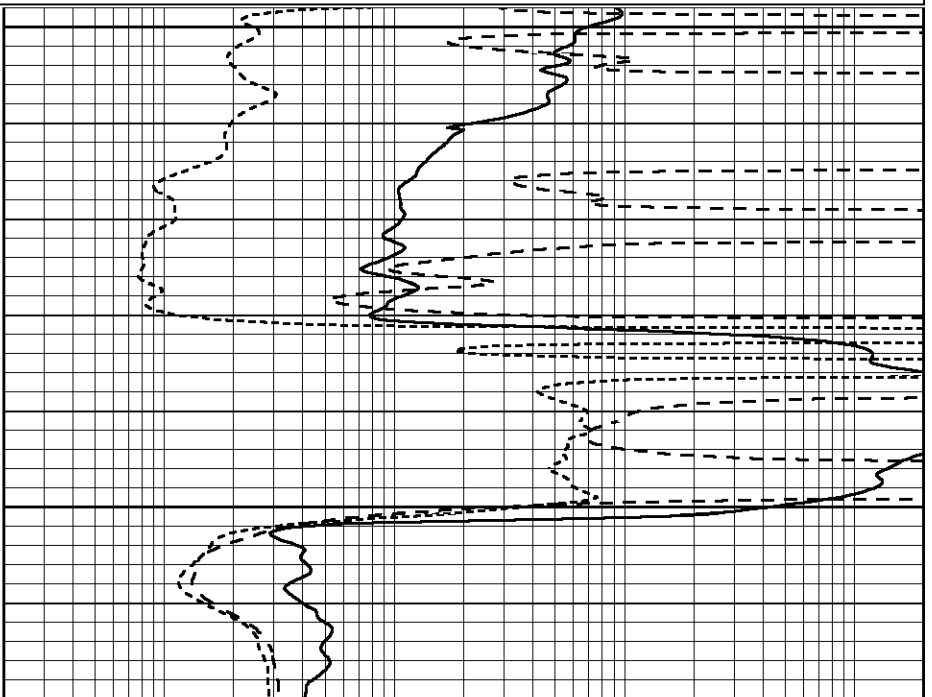
-100 SP (mV) 100

-250 Rxo/Rt 50

0.2 SHALLOW GUARD (Ohm-m) 2000

0.2 MEDIUM INDUCTION (Ohm-m) 2000

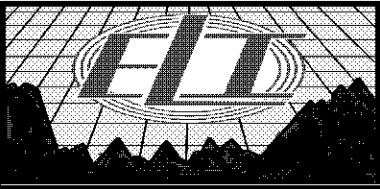
0.2 DEEP INDUCTION (Ohm-m) 2000



0.2 SHALLOW GUARD (Ohm-m) 2000

0.2 MEDIUM INDUCTION (Ohm-m) 2000

0.2 DEEP INDUCTION (Ohm-m) 2000

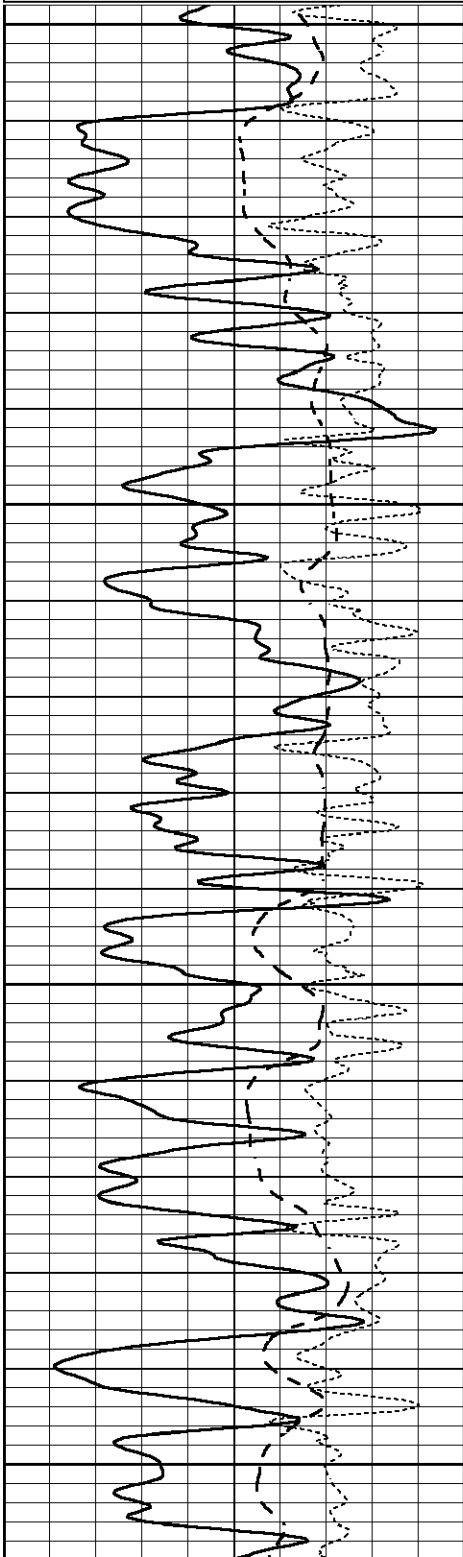


MAIN SECTION

Database File 7399pe.db
Dataset Pathname pass3DD
Presentation Format _dil
Dataset Creation Wed Jan 04 14:06:54 2023
Charted by Depth in Feet scaled 1:240

0	GAMMA RAY (GAPI)	150
-100	SP (mV)	100
-250	Rxo/Rt	50

0.2	SHALLOW GUARD (Ohm-m)	2000
0.2	MEDIUM INDUCTION (Ohm-m)	2000
0.2	DEEP INDUCTION (Ohm-m)	2000

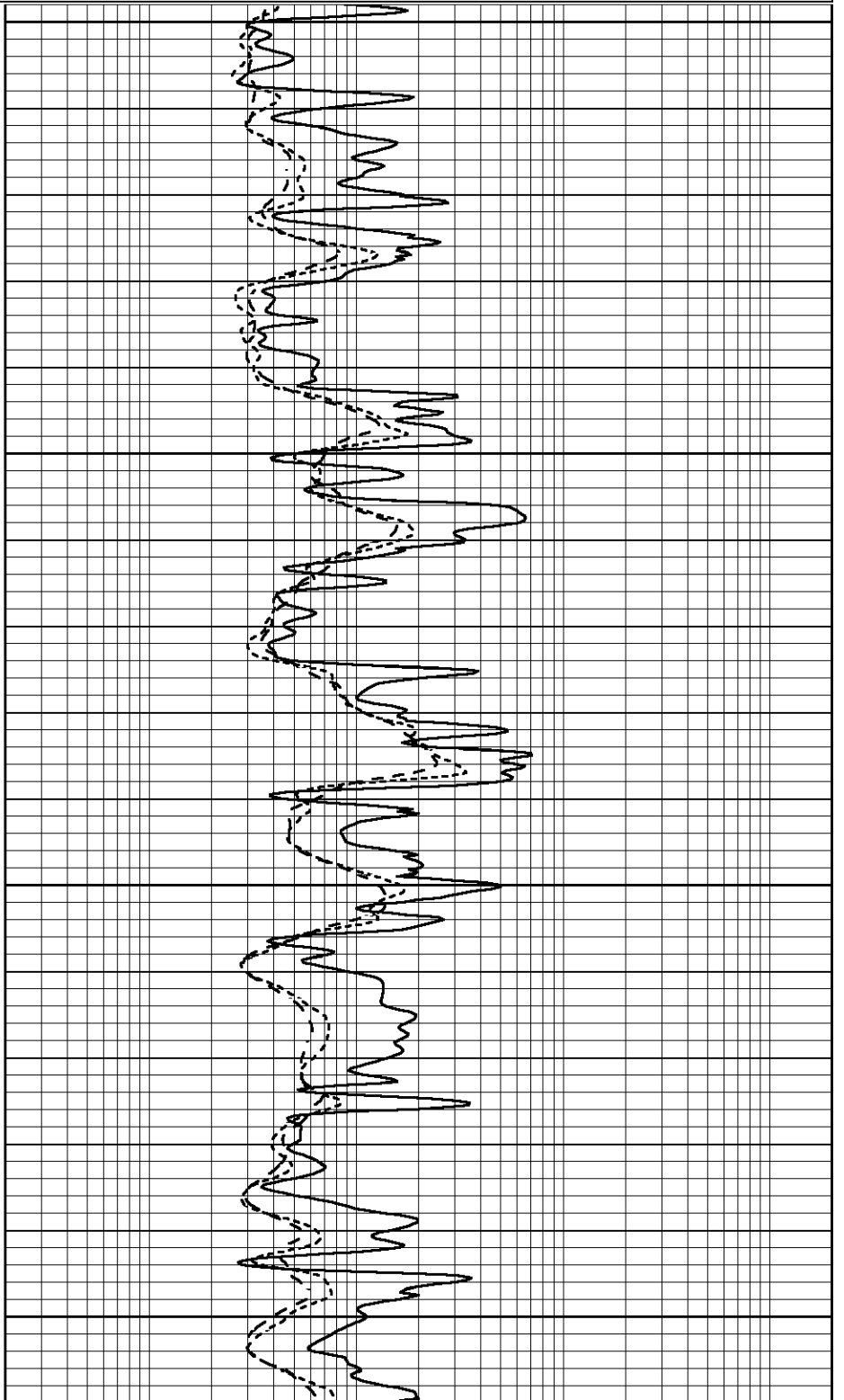


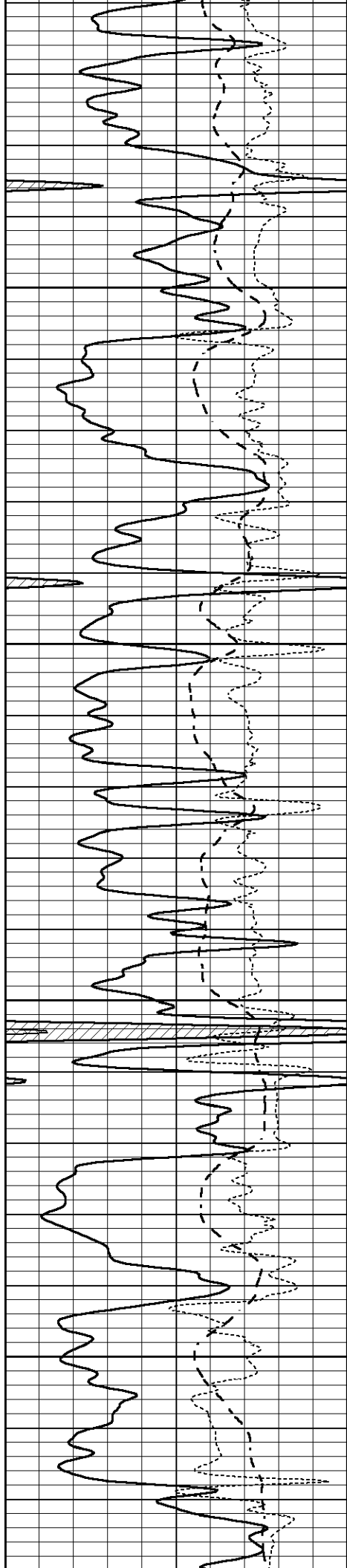
3300

3350

3400

3450



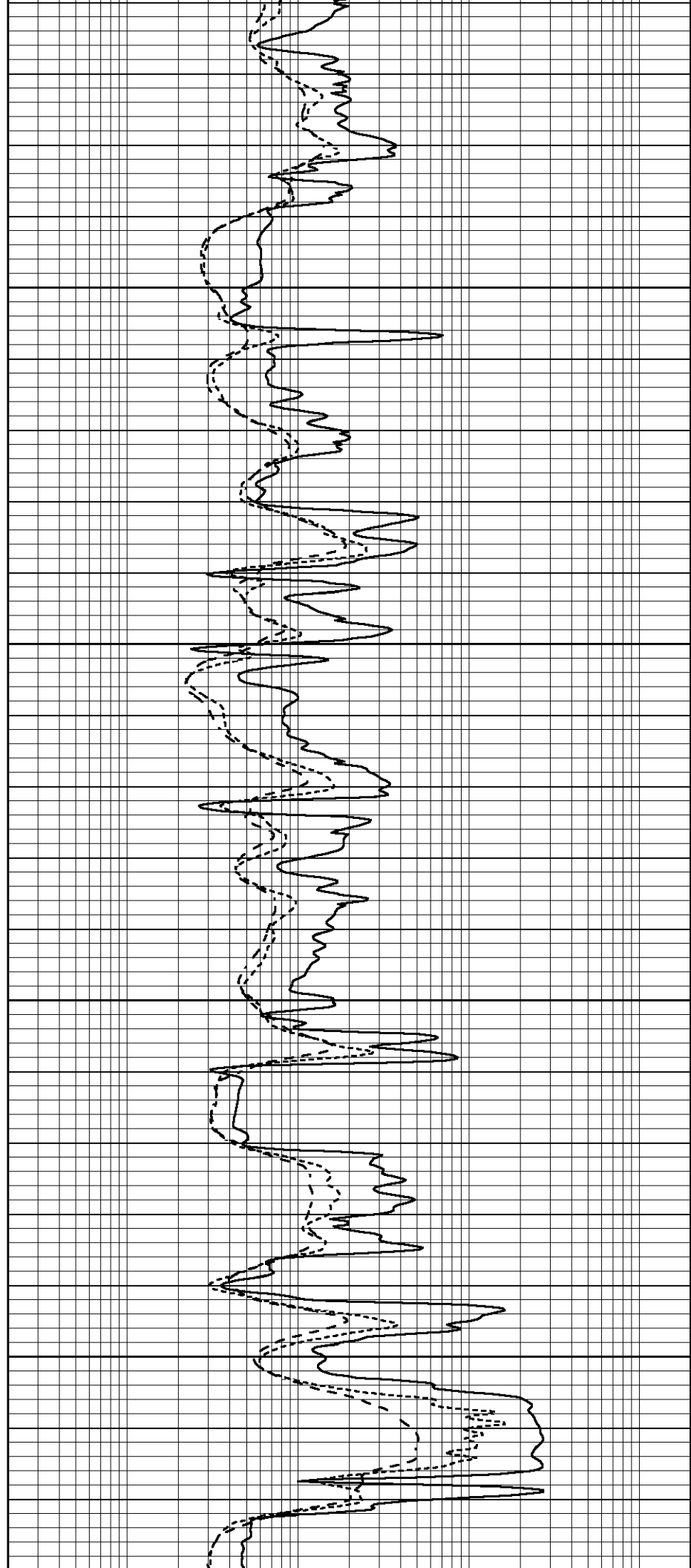


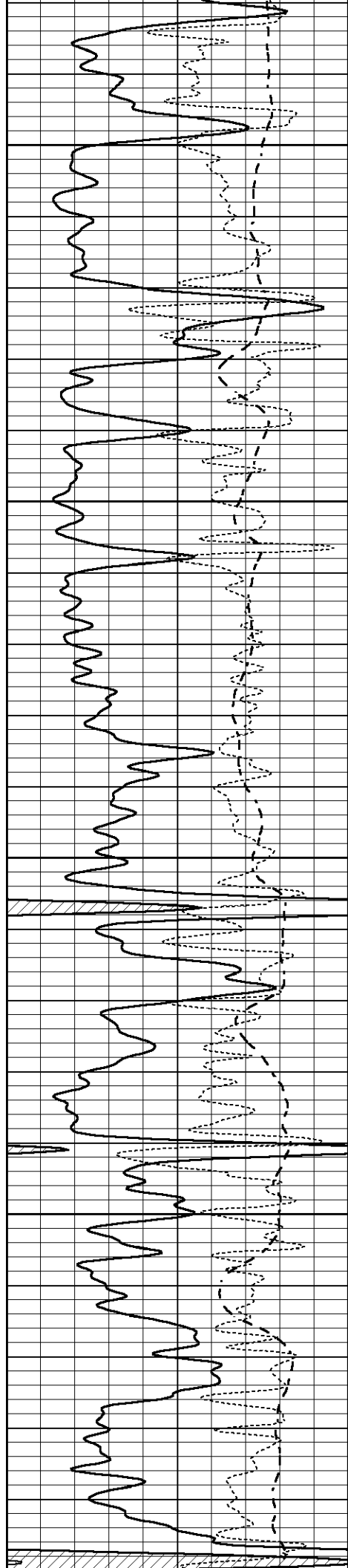
3500

3550

3600

3650





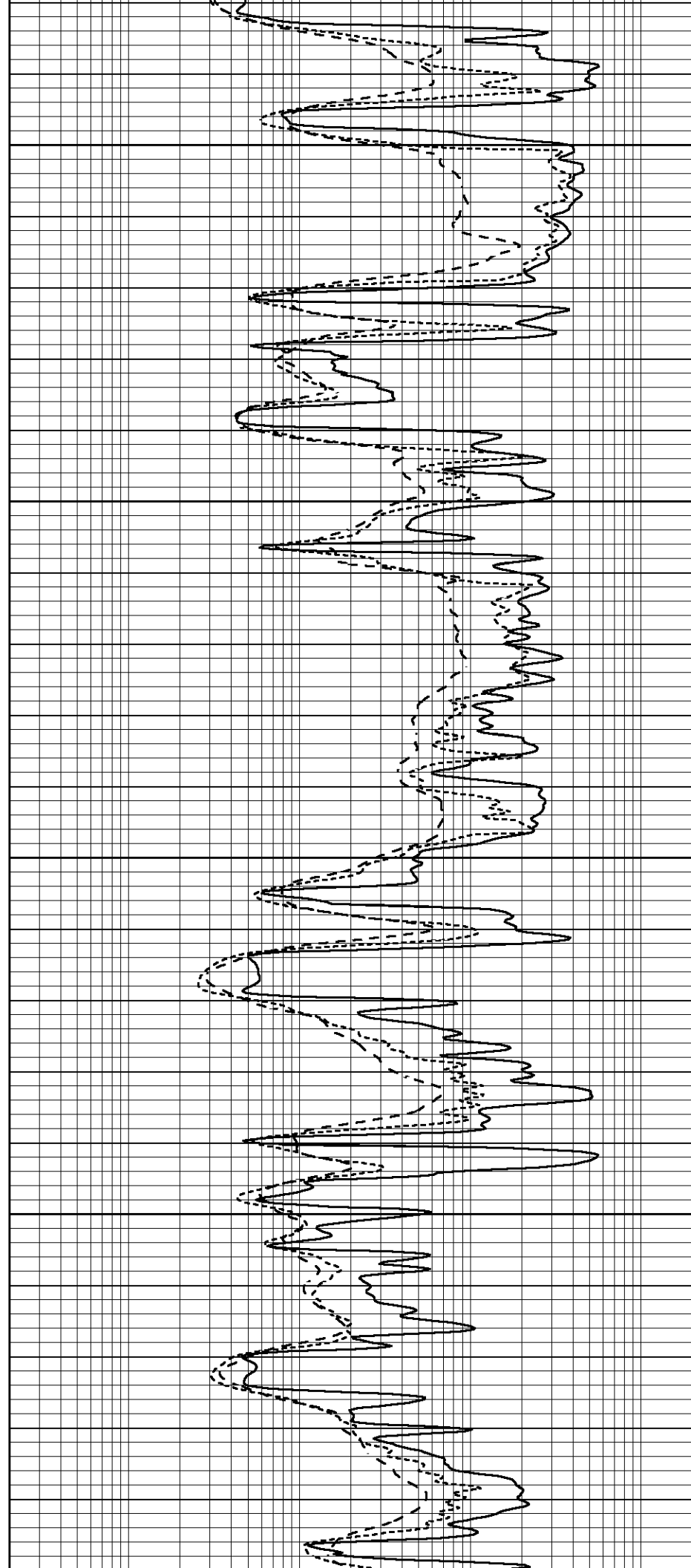
3700

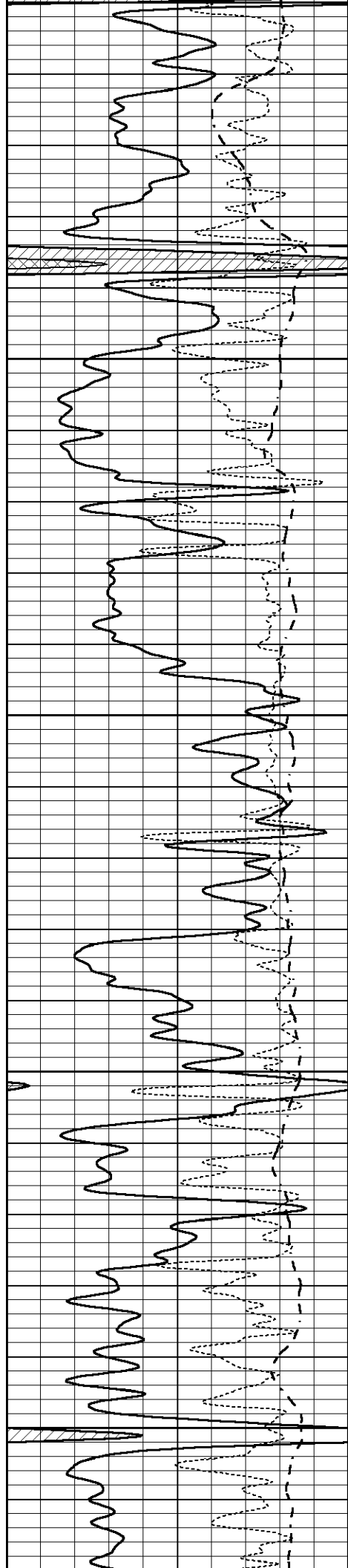
3750

3800

3850

3900





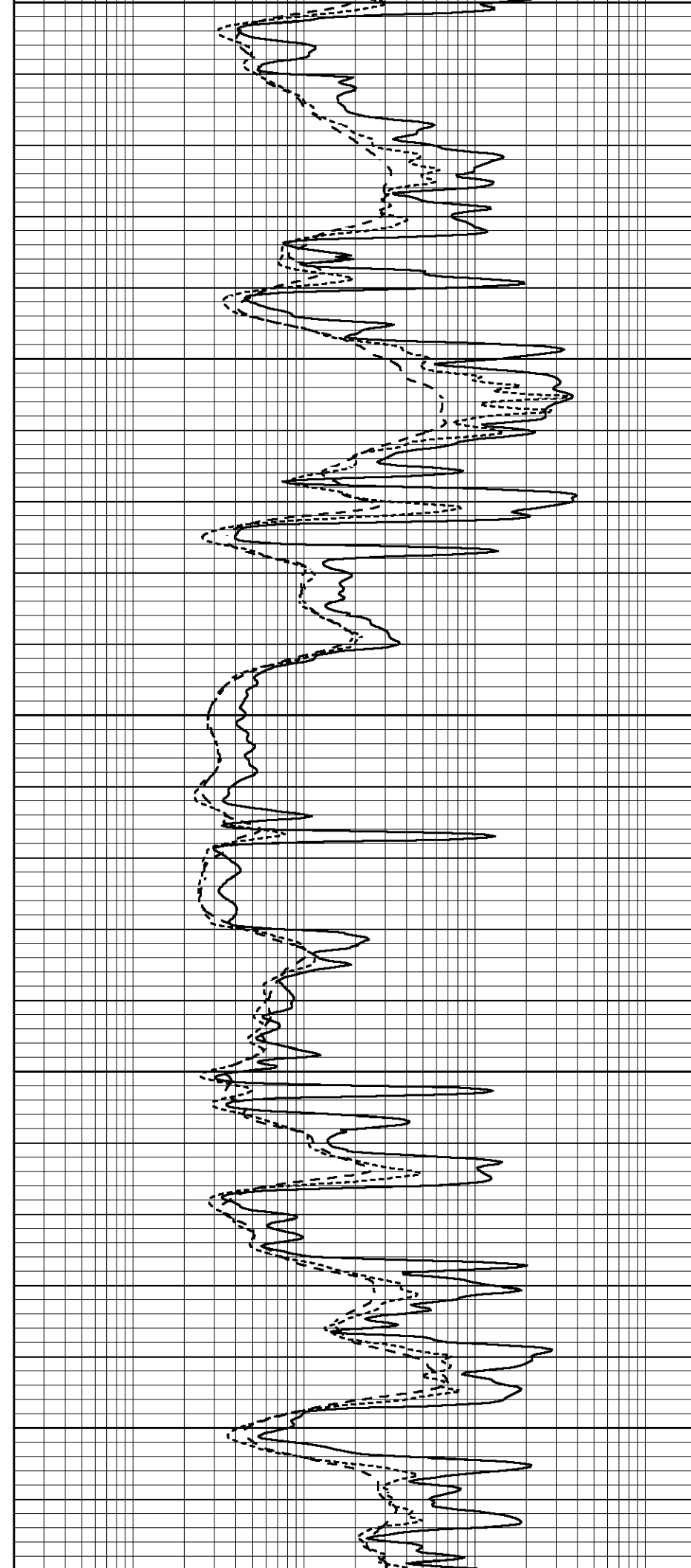
3900

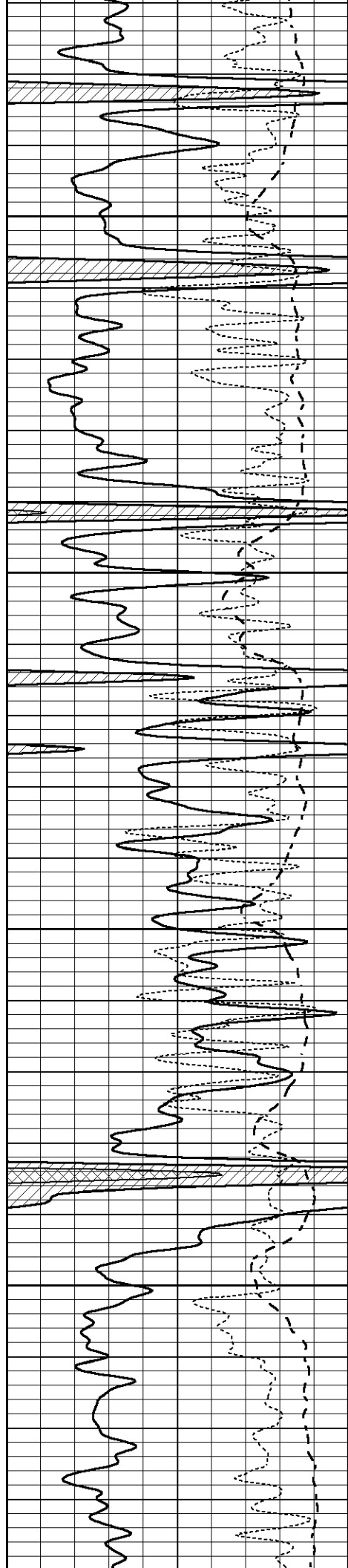
3950

4000

4050

4100



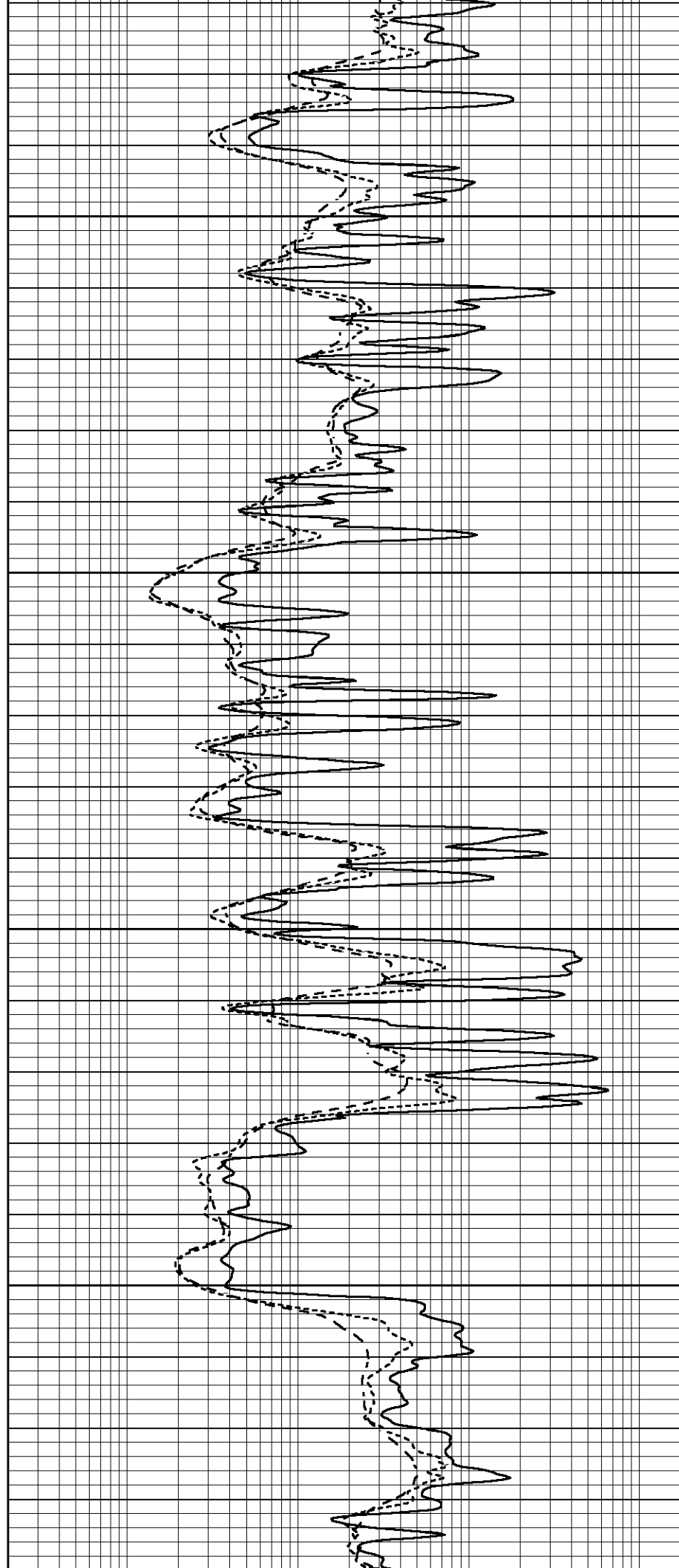


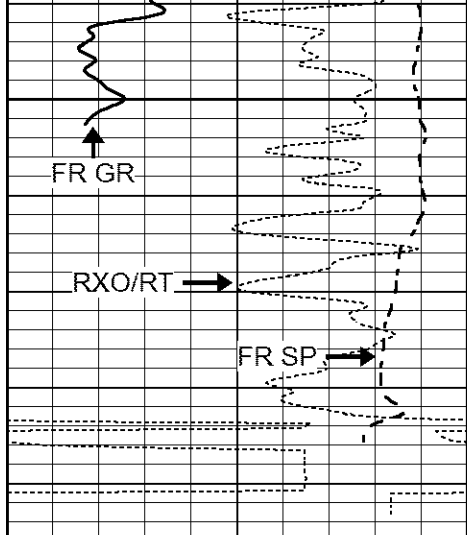
4150

4200

4250

4300





4350

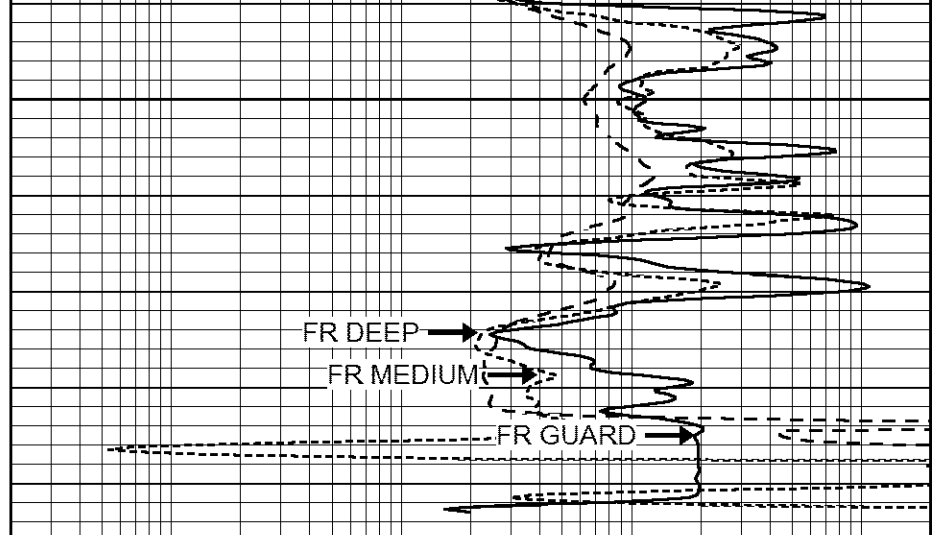
FR GR

RXO/RT

FR SP

LTD 4387

0	GAMMA RAY (GAPI)	150
-100	SP (mV)	100
-250	Rxo/Rt	50



FR DEEP

FR MEDIUM

FR GUARD

0.2	SHALLOW GUARD (Ohm-m)	2000
0.2	MEDIUM INDUCTION (Ohm-m)	2000
0.2	DEEP INDUCTION (Ohm-m)	2000

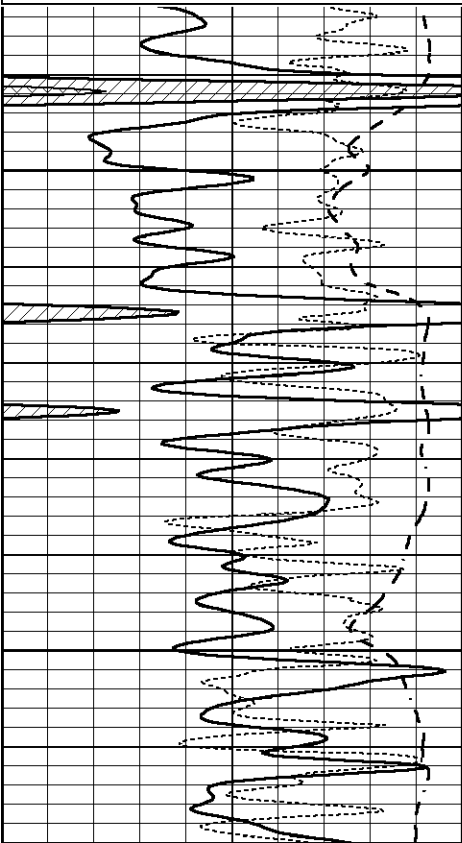


REPEAT SECTION

Database File 7399pe.db
 Dataset Pathname pass2RR
 Presentation Format _dil
 Dataset Creation Wed Jan 04 13:53:11 2023
 Charted by Depth in Feet scaled 1:240

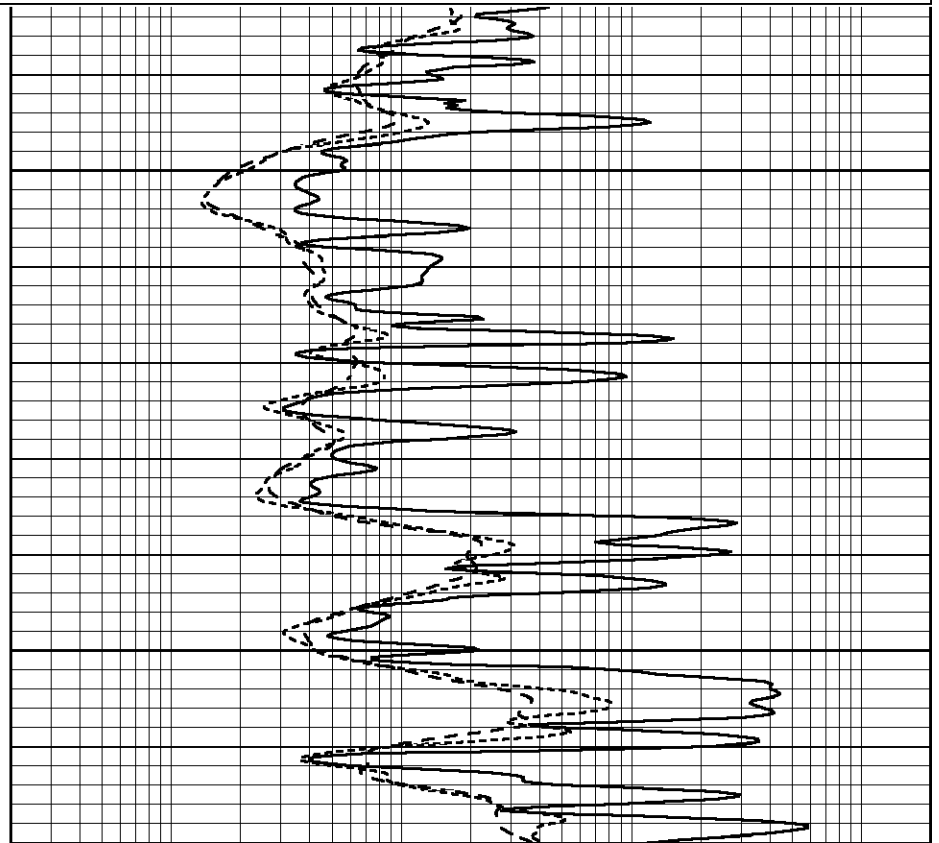
0	GAMMA RAY (GAPI)	150
-100	SP (mV)	100
-250	Rxo/Rt	50

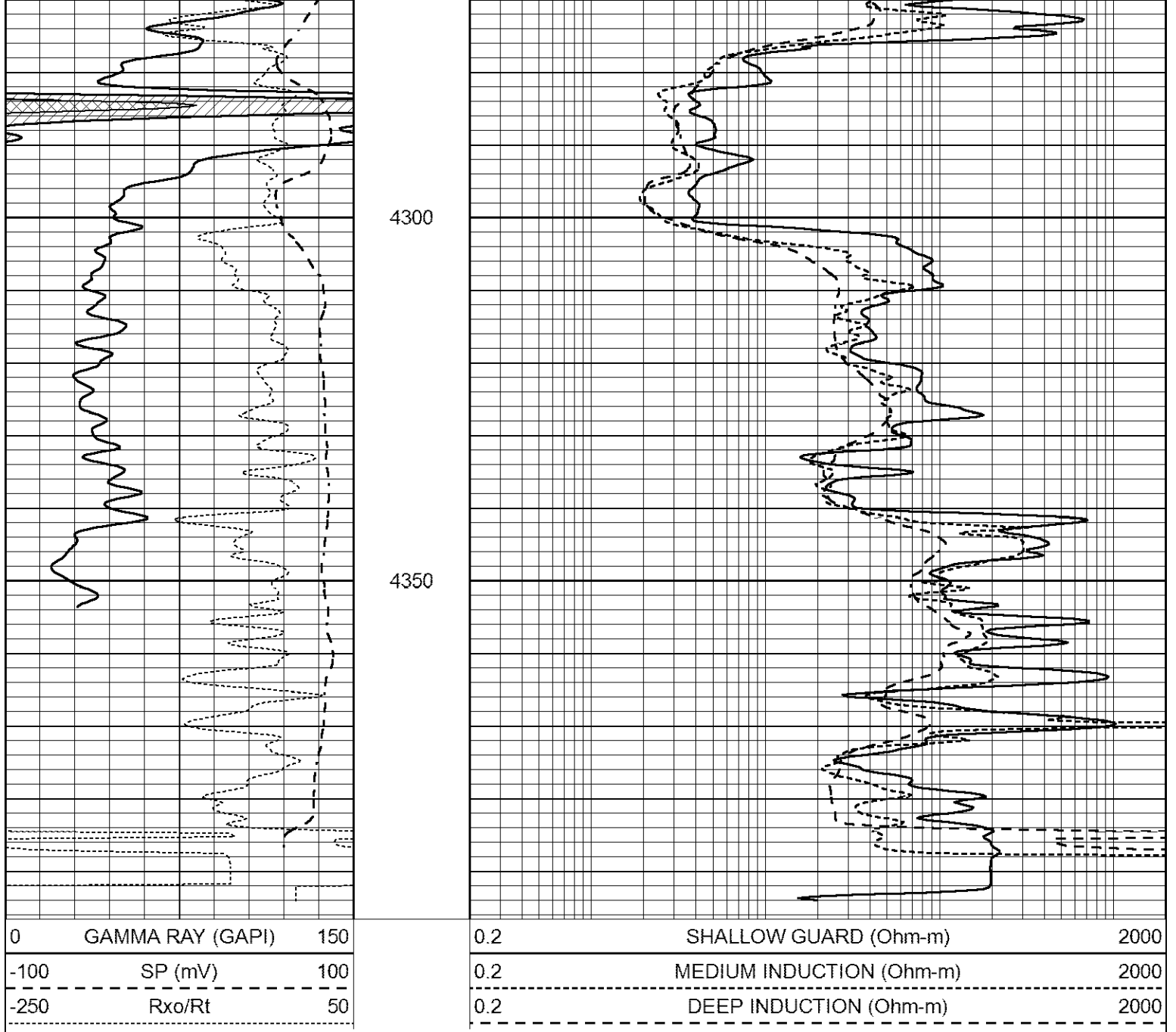
0.2	SHALLOW GUARD (Ohm-m)	2000
0.2	MEDIUM INDUCTION (Ohm-m)	2000
0.2	DEEP INDUCTION (Ohm-m)	2000



4200

4250





Calibration Report

Database File 7399pe.db
 Dataset Pathname pass3DD
 Dataset Creation Wed Jan 04 14:06:54 2023

Dual Induction Calibration Report

Serial-Model: FW1410-55-Probe
 Surface Cal Performed: Thu Jun 30 01:48:00 2022
 Downhole Cal Performed: Tue Feb 19 11:44:24 2019
 After Survey Verification Performed: Tue Feb 19 11:44:27 2019

Surface Calibration

	Readings			References			Results	
	Air	Loop	V	Air	Loop	mmho/m	m	b
Loop: Deep	0.011	0.656	V	1.000	400.000	mmho/m	650.000	-3.000
Medium	-0.000	0.731	V	1.000	464.000	mmho/m	690.000	-10.500
Internal:	Zero	Cal		Zero	Cal		m	b

Deep	0.007	0.649	V	0.000	400.000	mmho/m	623.784	-4.595
Medium	0.004	0.743	V	0.000	464.000	mmho/m	627.284	-2.251

Downhole Calibration								
	Readings			References			Results	
	Zero	Cal		Zero	Cal		m'	b'
Deep	-0.824	395.917	mmho/m	-0.976	397.550	mmho/m	1.004	-0.149
Medium	3.565	471.327	mmho/m	3.468	471.590	mmho/m	1.001	-0.099
LL3		7.503	V		1500.000	Ohm-m		
		0.001	V		20.000	Ohm-m		
		-7.481	V		3745.000	mmho-m		

After Survey Verification								
	Readings			Targets			Results	
	Zero	Cal		Zero	Cal		m'	b'
Deep	0.000	0.000	mmho/m	-0.824	395.917	mmho/m	1.000	0.000
Medium	0.000	0.000	mmho/m	3.565	471.327	mmho/m	1.000	0.000
LL3		0.000	Ohm-m		1500.000	Ohm-m		
		0.000	Ohm-m		20.000	Ohm-m		
		0.000	mmho-m		3745.000	mmho-m		

Litho Density Calibration Report
Serial: 005 Model: Litho_Ver3

Master Calibration					Performed Fri May 13 13:54:56 2011			
	Background	Magnesium	Aluminum	Aluminum+Fe				
Window 1	1363.1	46477.8	11515.9	9589.9				cps
Window 2	1239.4	36488.4	9270.1	7998.9				cps
Window 3	1044.3	20488.1	5500.7	4913.3				cps
Window 4	315.7	358.7	321.5	319.5				cps
Long Space	0.0	35249.0	8030.7	6759.4				cps
Short Space	1.4	9675.7	6523.4	5391.9				cps
Rho		1.7100	2.5900	0.0000				g/cc
Pe		2.0000	2.7500	5.7900				
Rib Angle	: 45.1	Rib Slope	: 1.003	Density/Spine Ratio				: 0.575
Spine Angle	: 75.1	Spine Slope	: 3.752	Spine Intercept				: -24.0

Before Survey Verification					Performed Wed Dec 31 18:00:00 1969			
	Background	Magnesium	Aluminum	Aluminum+Fe				
Window 1	0.0	0.0	0.0	0.0				cps
Window 2	0.0	0.0	0.0	0.0				cps
Window 3	0.0	0.0	0.0	0.0				cps
Window 4	0.0	0.0	0.0	0.0				cps
Long Space	0.0	0.0	0.0	0.0				cps
Short Space	0.0	0.0	0.0	0.0				cps
Measured Rho		0.0000	0.0000	0.0000				g/cc
Measured Correction		0.0000	0.0000	0.0000				g/cc
Measured Pe			0.0000	0.0000				

After Survey Verification					Performed Wed Dec 31 18:00:00 1969			
	Background	Magnesium	Aluminum	Aluminum+Fe				
Window 1	0.0	0.0	0.0	0.0				cps
Window 2	0.0	0.0	0.0	0.0				cps
Window 3	0.0	0.0	0.0	0.0				cps
Window 4	0.0	0.0	0.0	0.0				cps
Long Space	0.0	0.0	0.0	0.0				cps

Long Space	0.0	0.0	0.0	0.0	cps
Short Space	0.0	0.0	0.0	0.0	cps
Measured Rho		0.0000	0.0000	0.0000	g/cc
Measured Correction		0.0000	0.0000	0.0000	g/cc
Measured Pe			0.0000	0.0000	

Compensated Neutron Calibration Report

Serial Number: 080621PMC
Tool Model: NABORS

PRE-SURVEY VERIFICATION

Detector	Readings	Measured	Target
Short Space	cps		
Long Space	cps	pu	pu

POST-SURVEY VERIFICATION

Detector	Readings	Measured	Target
Short Space	cps		
Long Space	cps	pu	pu

Gamma Ray Calibration Report

Serial Number: 7
Tool Model: Probe1
Performed: Thu May 26 08:56:46 2022

Calibrator Value: 1.0 GAPI

Background Reading: 0.0 cps
Calibrator Reading: 1.0 cps

Sensitivity: 0.5500 GAPI/cps