



**COMPENSATED
DENSITY/NEUTRON
PE LOG**

Company NEC OPERATING - KANSAS, LLC.

Well INDIA #1

Field RATTLESNAKE

County STAFFORD State KANSAS

Location: API #: 15-185-24126-0000
1100' FSL & 1100' FEL
NW - NW - SE - SE

SEC 3 TWP 24S RGE 14W

Other Services
DILMEL

Permanent Datum GROUND LEVEL Elevation 1951

Elevation

Log Measured From KELLY BUSHING 8' A.G.L.

Drilling Measured From KELLY BUSHING

K.B. 1959
D.F. 1957
G.L. 1951

Date	1/4/23		
Run Number	ONE		
Depth Driller	4260		
Depth Logger	4252		
Bottom Logged Interval	4228		
Top Log Interval	3000		
Casing Driller	8 5/8"@223'		
Casing Logger	223		
Bit Size	7 7/8"		
Type Fluid in Hole	CHEMICAL MUD	CHLORIDES: 6.000	
Density / Viscosity	9.3/46		
pH / Fluid Loss	10.0/9.2		
Source of Sample	FLOWLINE		
Rm @ Meas. Temp	1.00@66F		
Rmf @ Meas. Temp	.750@66F		
Rmc @ Meas. Temp	1.20@66F		
Source of Rmf / Rmc	MEASURED		
Rm @ BHT	.559@118F		
Time Circulation Stopped	3 HOURS		
Time Logger on Bottom	6:30 P.M.		
Maximum Recorded Temperature	118F		
Equipment Number	8916		
Location	HAYS, KANSAS		
Recorded By	JEFF LUEBBERS		
Witnessed By	PAT DEENIHAN		

<<< Fold Here >>>

All interpretations are opinions based on inferences from electrical or other measurements and we cannot and do not guarantee the accuracy or correctness of any interpretation, and we shall not, except in the case of gross or willful negligence on our part, be liable or responsible for any loss, costs, damages, or expenses incurred or sustained by anyone resulting from any interpretation made by any of our officers, agents or employees. These interpretations are also subject to our general terms and conditions set out in our current Price Schedule.

Comments

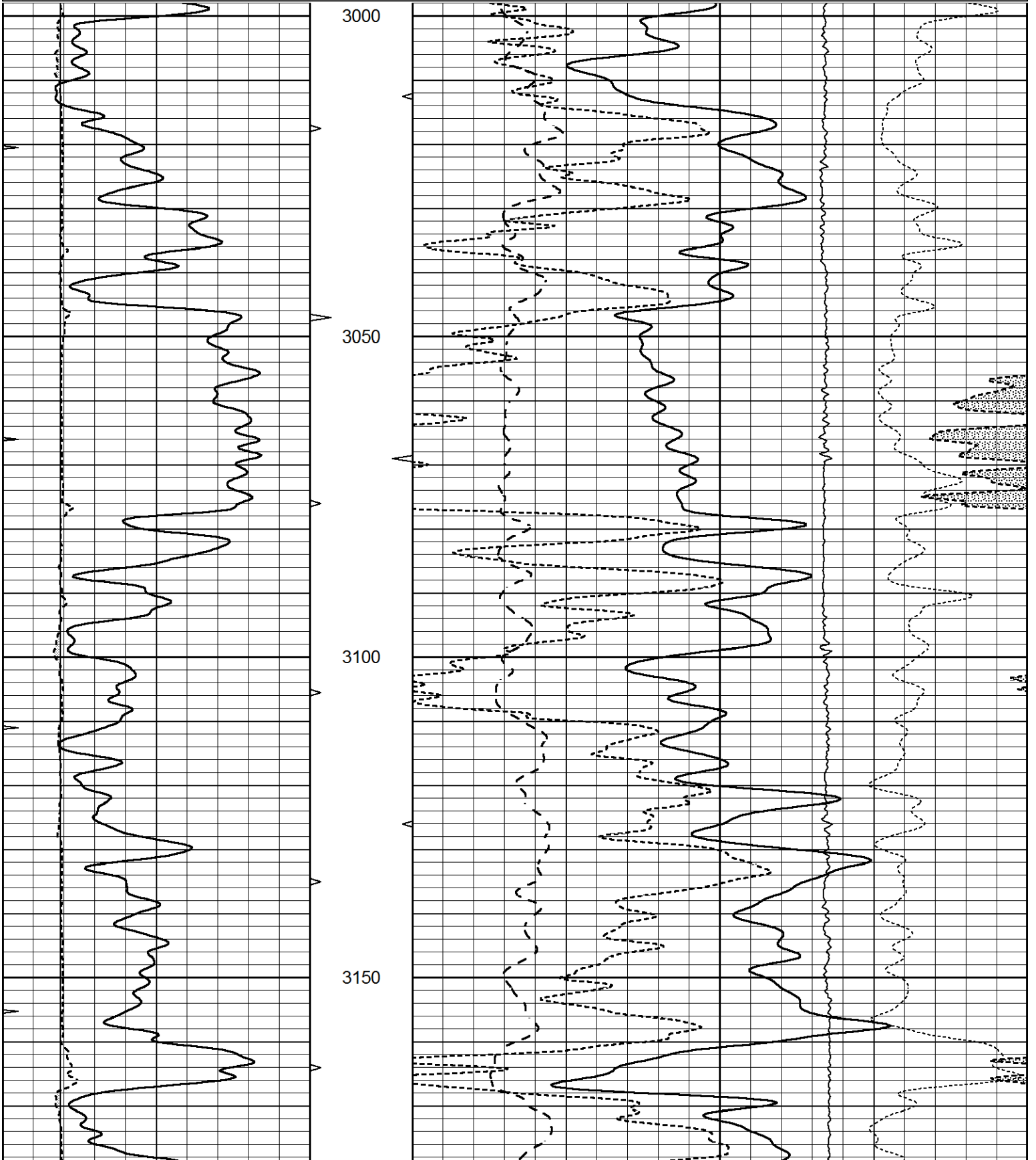
THANK YOU FOR USING ELI WIRELINE, HAYS, KS. (785) 628-6395
DIRECTIONS:
MACKSVILLE, KS., 5 E. ON HWY 50 TO "RD. 60", 2N., 1/2E., N. INTO

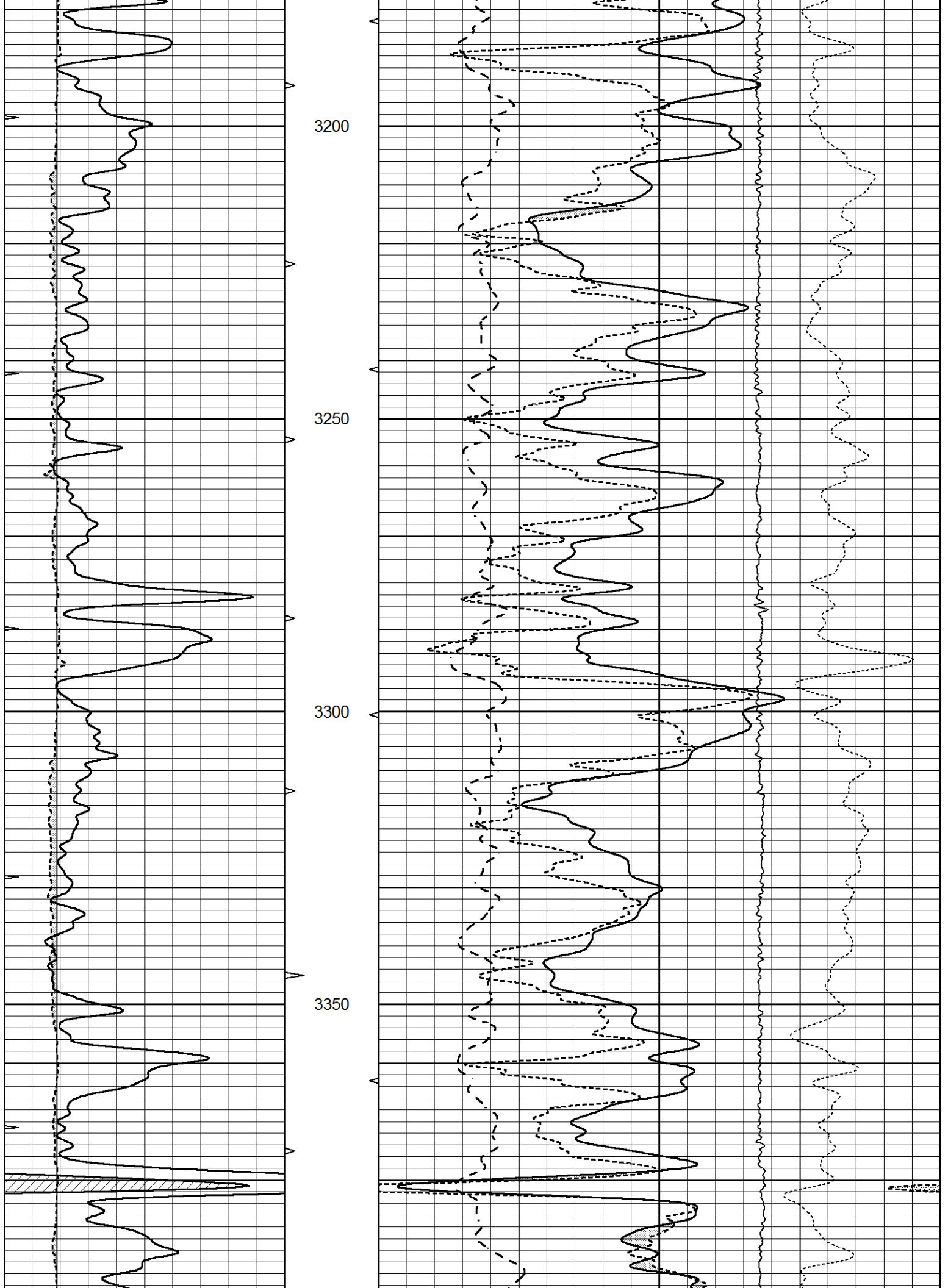


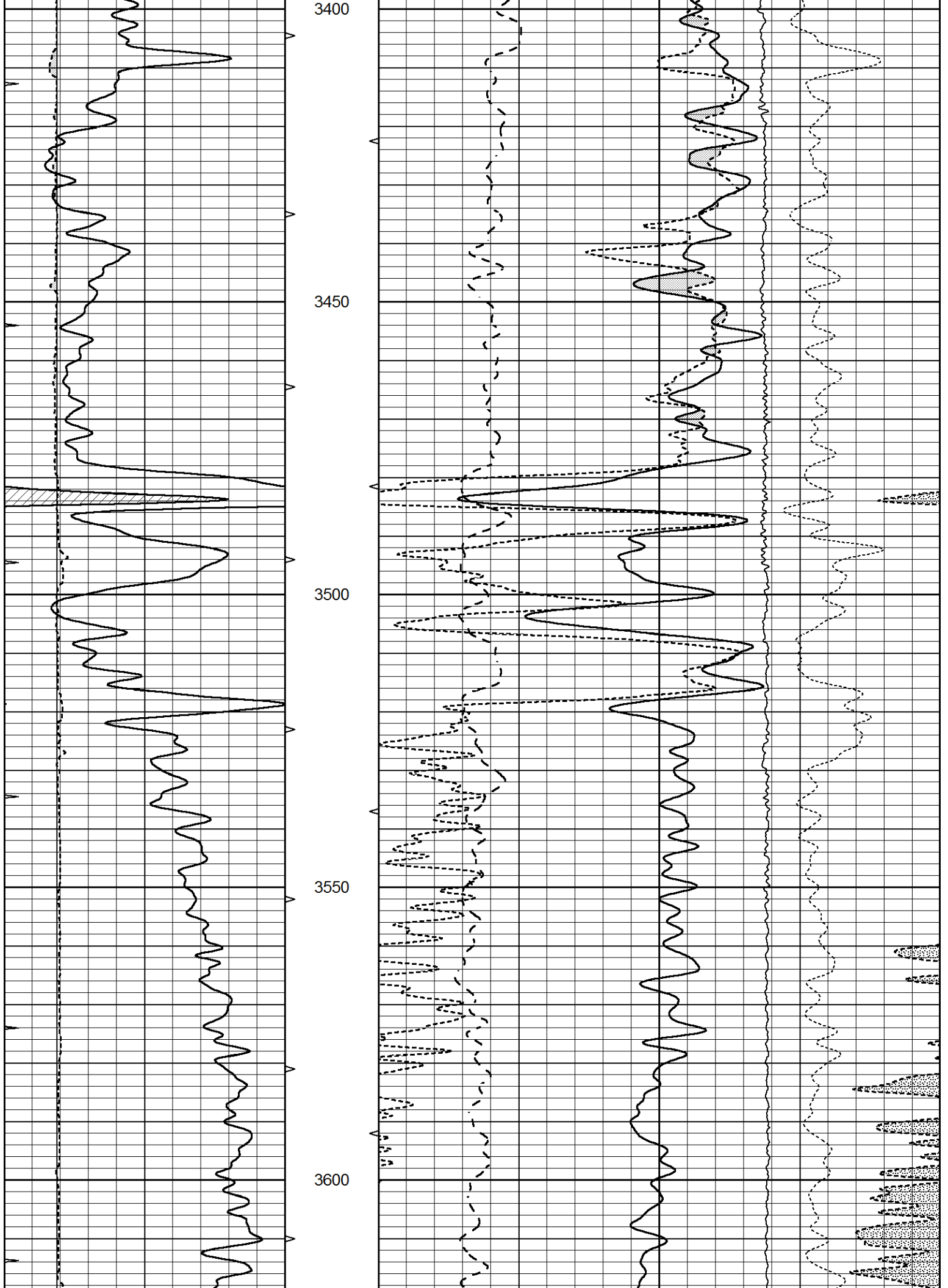
MAIN SECTION

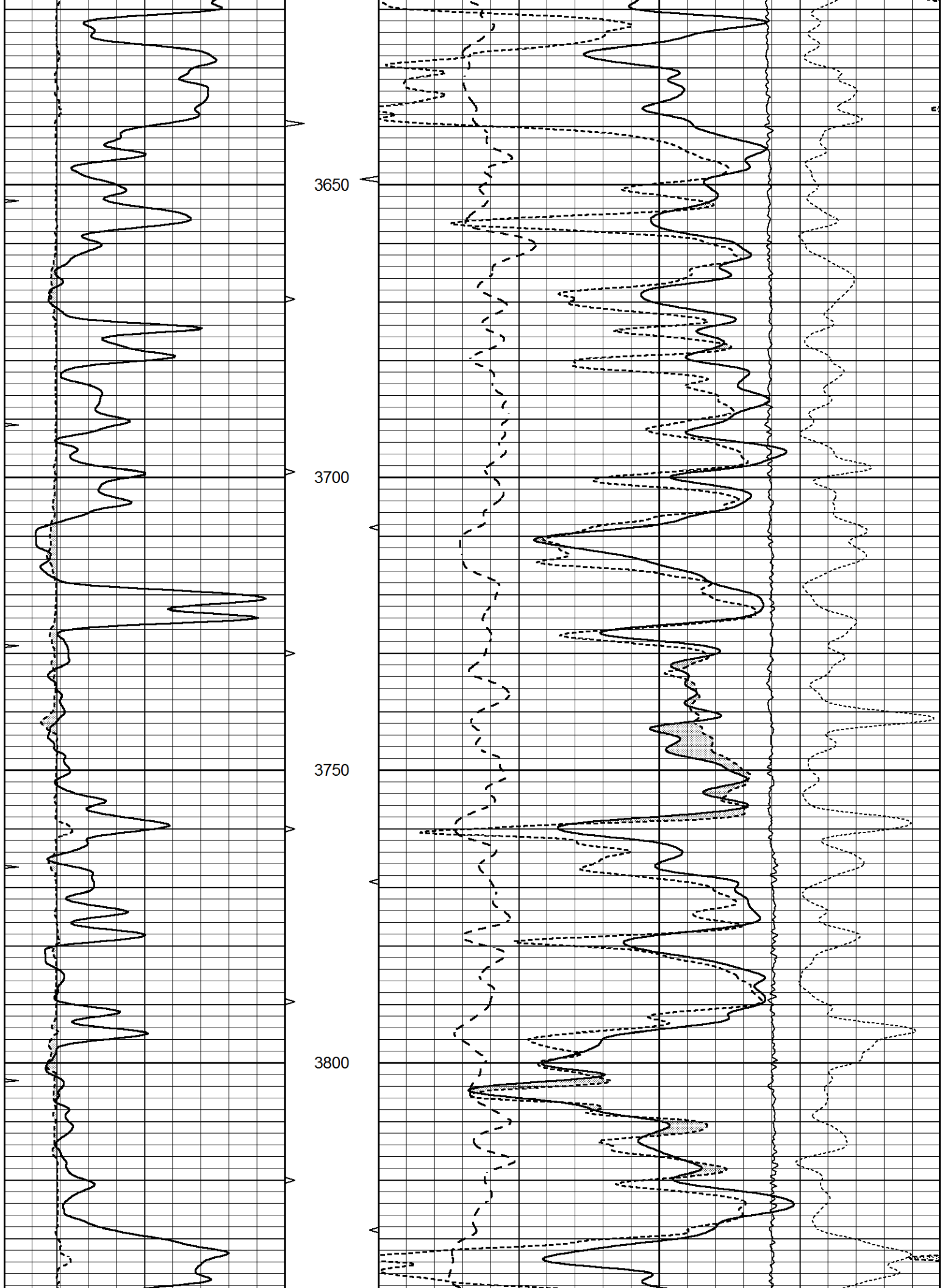
Database File 7430pe.db
 Dataset Pathname pass6.1M
 Presentation Format ldt_neu
 Dataset Creation Wed Jan 04 20:22:03 2023
 Charted by Depth in Feet scaled 1:240

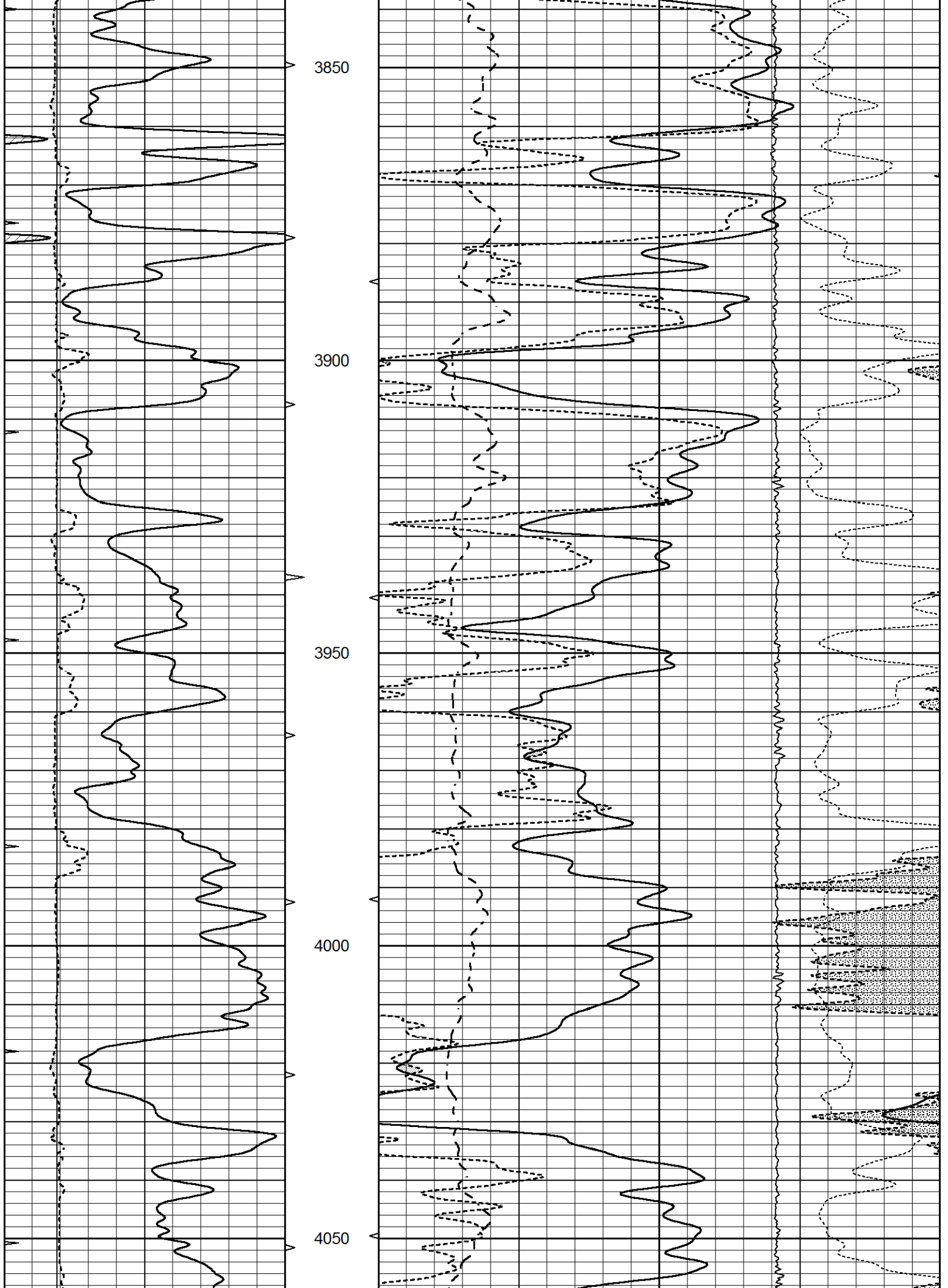
0	GAMMA RAY (GAPI)	150	ABHV	30	COMPENSATED DENSITY (pu)		-10
6	CALIPER (in)	16	10 (ft3)	0	COMPENSATED NEUTRON (pu)		-10
0	MINMK	20	TBHV	0	PE	10	0
			0 (ft3)	10			LTEN (lb)
							-0.25
							CORRECTION (g/cc)
							0.25

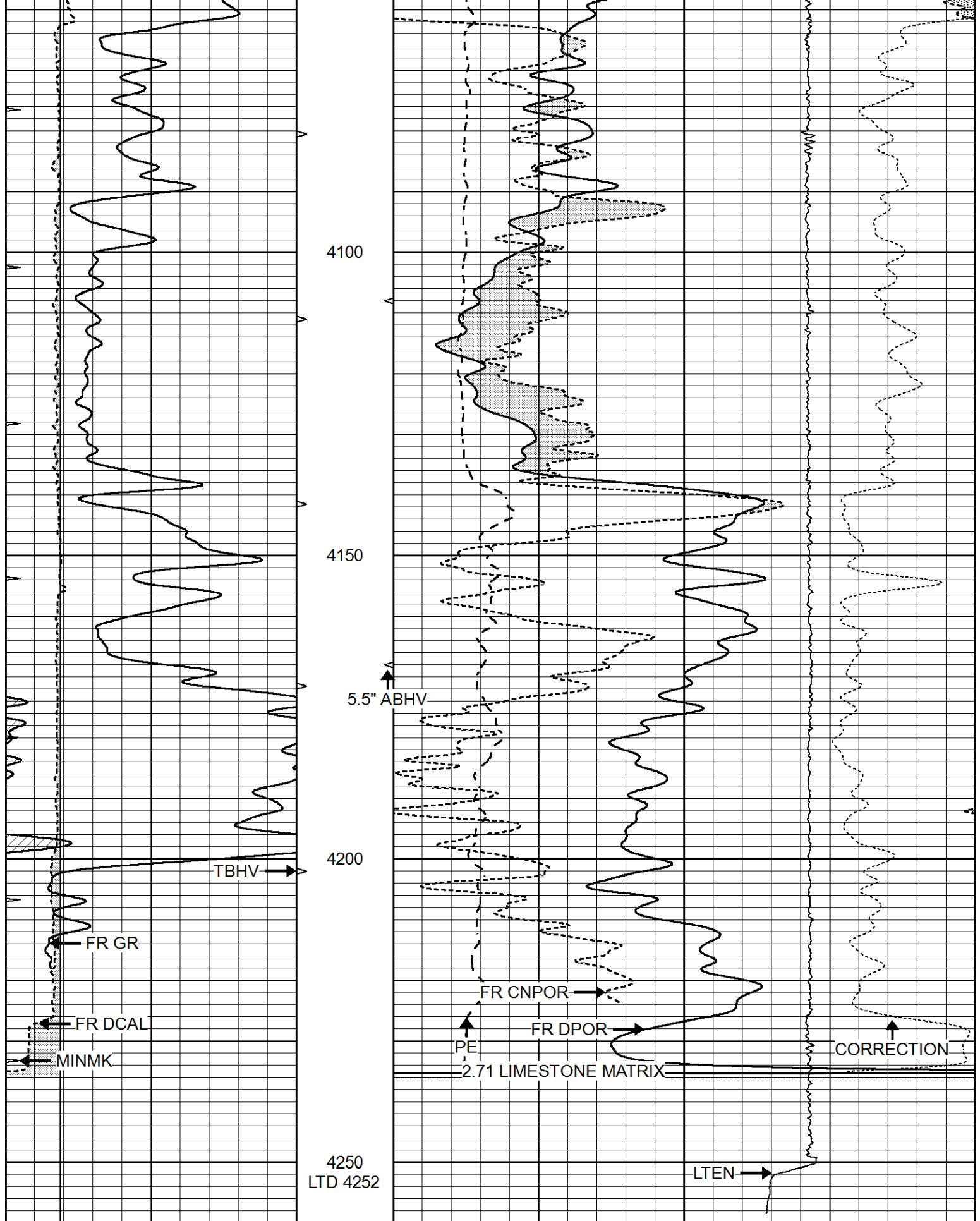












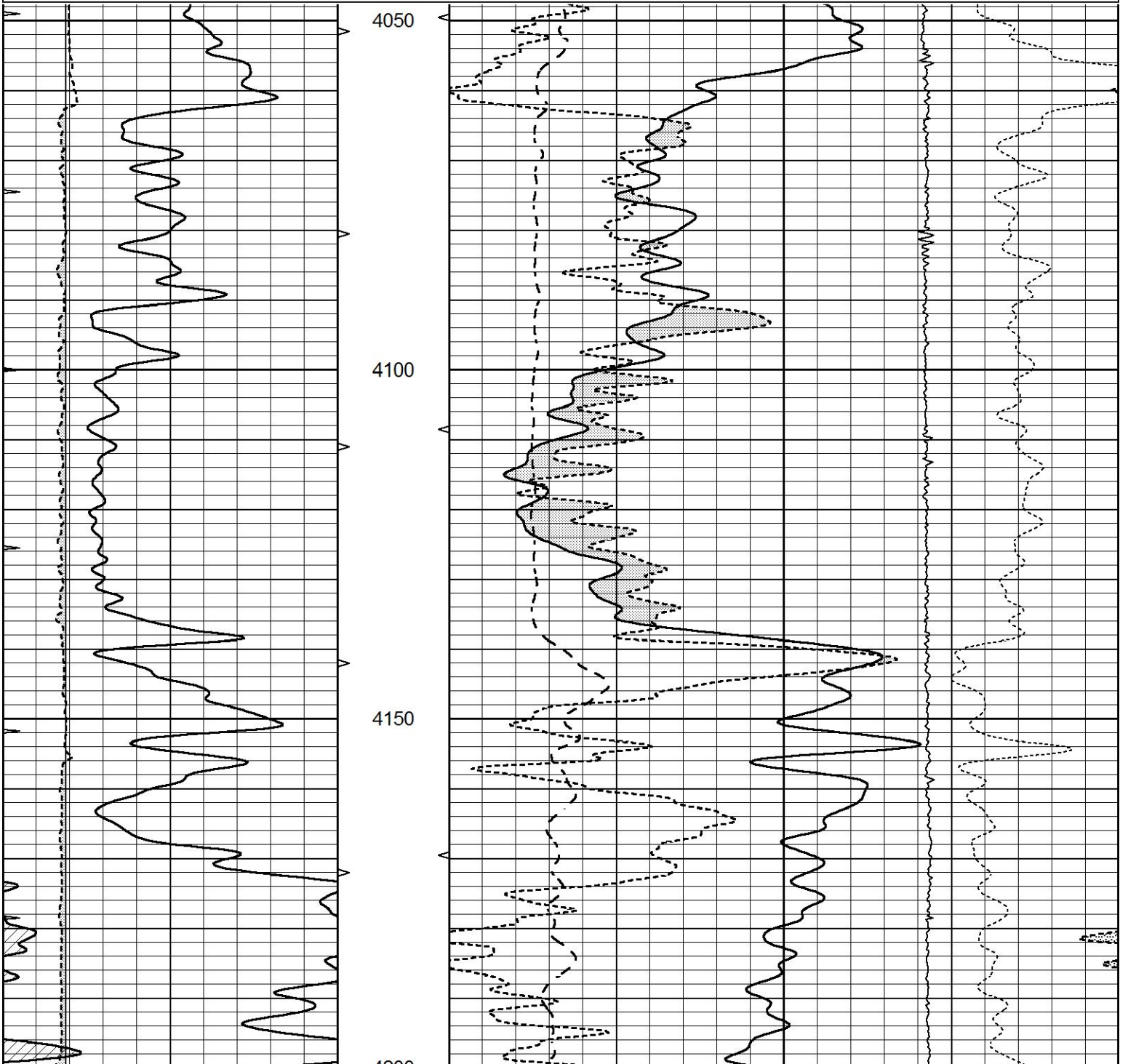
0	GAMMA RAY (GAPI)	150	ABHV	30	COMPENSATED DENSITY (pu)	-10
6	CALIPER (in)	16	10 (ft3)	0 30	COMPENSATED NEUTRON (pu)	-10
0	MINMK	20	TBHV	0	PE	10 0
			0 (ft3)	10	LTEN (lb)	5000
					-0.25	CORRECTION (g/cc)
					0.25	

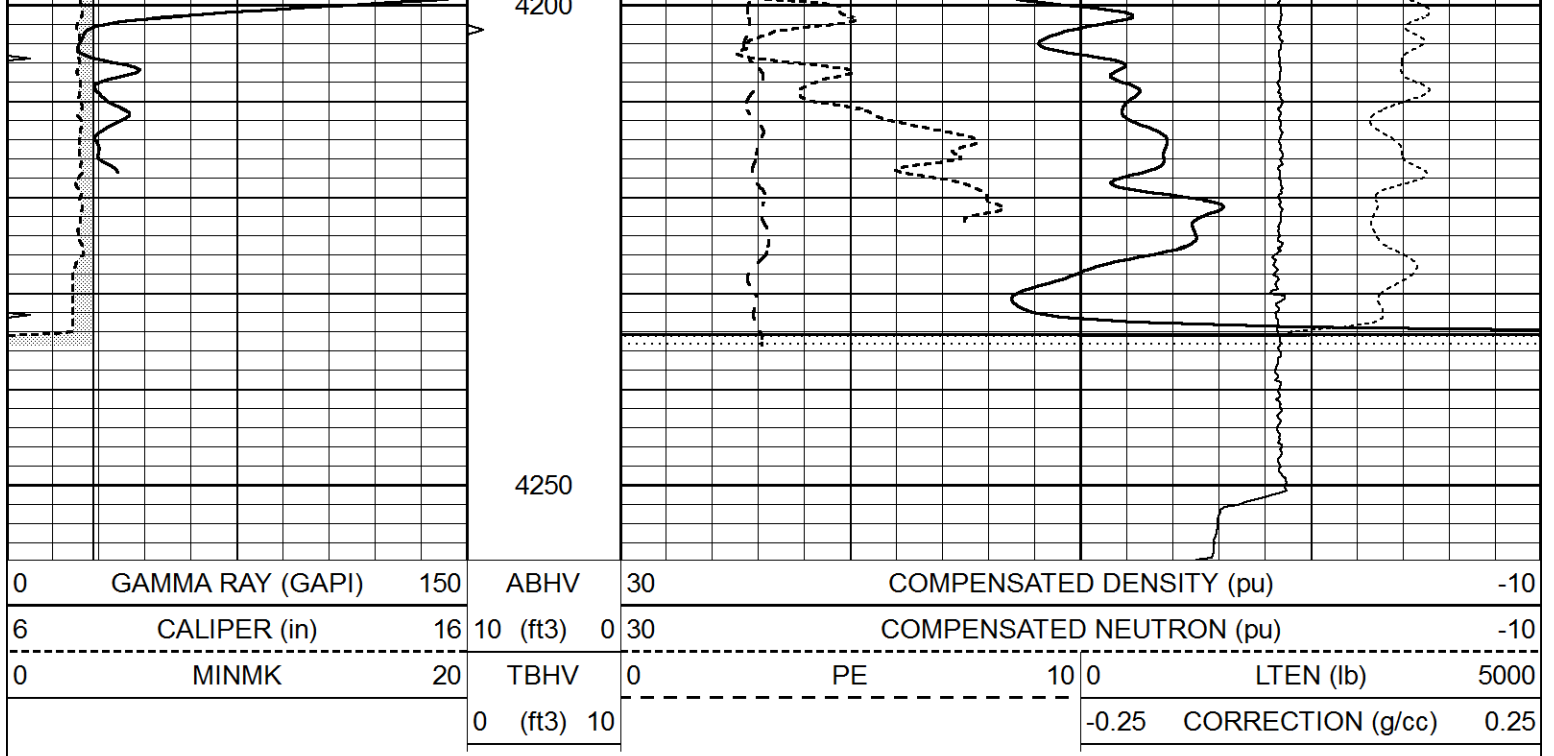


REPEAT SECTION

Database File 7430pe.db
 Dataset Pathname pass5.1R
 Presentation Format ldt_neu
 Dataset Creation Wed Jan 04 20:29:42 2023
 Charted by Depth in Feet scaled 1:240

0	GAMMA RAY (GAPI)	150	ABHV	30	COMPENSATED DENSITY (pu)	-10
6	CALIPER (in)	16	10 (ft3)	0 30	COMPENSATED NEUTRON (pu)	-10
0	MINMK	20	TBHV	0	PE	10 0
			0 (ft3)	10	LTEN (lb)	5000
					-0.25	CORRECTION (g/cc) 0.25





Calibration Report

Database File 7430pe.db
 Dataset Pathname pass6.1M
 Dataset Creation Wed Jan 04 20:22:03 2023

Dual Induction Calibration Report

Serial-Model: PROBE8-DILG
 Surface Cal Performed: Wed Jan 04 09:16:01 2023
 Downhole Cal Performed: Mon Sep 10 14:28:38 2018
 After Survey Verification Performed: Mon Sep 10 14:28:40 2018

Surface Calibration

Loop:	Readings				References			Results	
	Air	Loop			Air	Loop		m	b
Deep	0.015	0.648	V	0.000	400.000	mmho/m	620.000	4.000	
Medium	0.029	0.796	V	0.000	464.000	mmho/m	620.000	-10.000	
Internal:	Zero	Cal		Zero	Cal		m	b	
Deep	0.017	0.657	V	0.000	400.000	mmho/m	625.153	-10.619	
Medium	0.016	0.757	V	0.000	464.000	mmho/m	625.992	-9.739	

Downhole Calibration

	Readings				References			Results	
	Zero	Cal			Zero	Cal		m'	b'
Deep	0.000	0.000	mmho/m	2.011	405.777	mmho/m	1.000	0.000	
Medium	0.000	0.000	mmho/m	7.590	503.393	mmho/m	1.000	0.000	
LL3		7.500	V		1500.000	Ohm-m			
		0.000	V		20.000	Ohm-m			
		-7.200	V		3800.000	mmho-m			

After Survey Verification

	Readings				Targets			Results	
	Zero	Cal			Zero	Cal		m'	b'
Deep	0.000	0.000	mmho/m	0.000	0.000	mmho/m	0.000	0.000	

Medium	0.000	0.000	mmho/m	0.000	0.000	mmho/m	0.000	0.000
LL3		1.000	Ohm-m		1.000	Ohm-m		
		0.000	Ohm-m		0.000	Ohm-m		
		1.000	mmho-m		1.000	mmho-m		

Litho Density Calibration Report
Serial: 004 Model: PRB

Master Calibration		Performed Fri Nov 04 15:19:59 2022					
	Background	Magnesium		Aluminum		Aluminum+Fe	
Window 1	1153.2	7232.1		2536.8		2279.5	cps
Window 2	1055.6	6225.5		2222.3		2030.5	cps
Window 3	902.5	3849.3		1546.4		1462.0	cps
Window 4	254.4	258.2		253.1		253.9	cps
Long Space	0.0	5169.9		1166.7		974.9	cps
Short Space	4.7	1383.0		950.5		792.1	cps
Rho		1.7100		2.5900		0.0000	g/cc
Pe		2.0000		2.7500		5.7900	
Rib Angle	: 45.9	Rib Slope	: 1.031	Density/Spine Ratio		: 0.573	
Spine Angle	: 75.9	Spine Slope	: 3.970	Spine Intercept		: -20.2	

Before Survey Verification		Performed Wed Dec 31 18:00:00 1969					
Window 1	0.0	0.0		0.0		0.0	cps
Window 2	0.0	0.0		0.0		0.0	cps
Window 3	0.0	0.0		0.0		0.0	cps
Window 4	0.0	0.0		0.0		0.0	cps
Long Space	0.0	0.0		0.0		0.0	cps
Short Space	0.0	0.0		0.0		0.0	cps
Measured Rho		0.0000		0.0000		0.0000	g/cc
Measured Correction		0.0000		0.0000		0.0000	g/cc
Measured Pe				0.0000		0.0000	

After Survey Verification		Performed Wed Dec 31 18:00:00 1969					
Window 1	0.0	0.0		0.0		0.0	cps
Window 2	0.0	0.0		0.0		0.0	cps
Window 3	0.0	0.0		0.0		0.0	cps
Window 4	0.0	0.0		0.0		0.0	cps
Long Space	0.0	0.0		0.0		0.0	cps
Short Space	0.0	0.0		0.0		0.0	cps
Measured Rho		0.0000		0.0000		0.0000	g/cc
Measured Correction		0.0000		0.0000		0.0000	g/cc
Measured Pe				0.0000		0.0000	

Compensated Neutron Calibration Report

Serial Number:	6I
Tool Model:	G

CALIBRATION						
	Detector	Readings		Target		Normalization
	Short Space	1.00	cps	1.00	cps	1.0000
	Long Space	1.00	cps	1.00	cps	1.0000

BEFORE SURVEY VERIFICATION

PRE-SURVEY VERIFICATION

	Detector	Readings	Measured	Target
1)	Short Space Long Space	cps cps	pu	pu
2)	Short Space Long Space	cps cps	pu	
3)	Short Space Long Space	cps cps	pu	

POST-SURVEY VERIFICATION

	Detector	Readings	Measured	Target
1)	Short Space Long Space	cps cps	pu	pu
2)	Short Space Long Space	cps cps	pu	pu
3)	Short Space Long Space	cps cps	pu	pu

Gamma Ray Calibration Report

Serial Number:	GR6	
Tool Model:	OPEN	
Performed:	Tue Nov 08 13:43:57 2022	
Calibrator Value:	150.0	GAPI
Background Reading:	0.0	cps
Calibrator Reading:	276.0	cps
Sensitivity:	0.8500	GAPI/cps